

# SPEC SHEET + MEASUREMENTS

PORT AUTHORITY.

Port Authority® Women's Horizon Puffy Long Jacket. L365

## Product photo



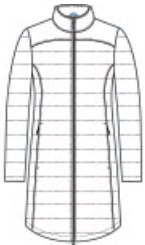
With horizontal baffles, a slight sheen and insulation that simulates down feathers, this is the newest puffy on the horizon. A water-resistant finish helps keep light rain out. •

- 100% polyester shell and lining
- 2-way molded center front zipper
- Elastic cuffs
- Port Pocket™ for decoration access
- Hidden, reverse coil zippered hand pockets
- Insulation method: 10.1-oz. polyfill
- Water protection method: water-resistant finish on shell, PU coating on lining

## CARE INSTRUCTIONS

Machine Wash Cold With Like Colors Or Separate. Do Not Use Fabric Softener. Only Non-Chlorine Bleach When Needed. Tumble Dry Low. Cool Iron If Necessary.

## Sketches



front



back

# SPEC SHEET + MEASUREMENTS

PORT AUTHORITY

Port Authority® Women's Horizon Puffy Long Jacket. L365

## PRODUCT MEASUREMENTS

	XS	S	M	L	XL	XXL	3XL	4XL
Size	2	4/6	8/10	12/14	16/18	20/22	24/26	28/30
Body Length at Back	36	37	38	38 1/2	39	39 1/2	40	40 1/2
Bust	19	20	21	22 1/2	24	25 1/2	27 1/2	29 1/2
Sleeve Length from Center Back	32 1/2	33	33 1/2	34 1/8	34 3/4	35 3/8	35 3/4	36 1/8

**Body Length at Back:** Measured from high point shoulder to finished hem at back.

**Bust:** Measured across the chest one inch below armhole when laid flat.

**Sleeve Length from Center Back:** Measure from Center Back neck to shoulder point to sleeve hem.

## SIZE CHARTS

	XS	S	M	L	XL	XXL	3XL	4XL
Size	2	4/6	8/10	12/14	16/18	20/22	24/26	28/30
Bust	32-34	35-36	37-38	39-41	42-44	45-47	48-51	52-55

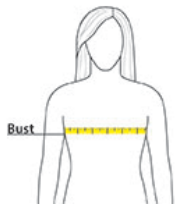
# SPEC SHEET + MEASUREMENTS

PORT AUTHORITY

Port Authority® Women's Horizon Puffy Long Jacket. L365

## HOW TO MEASURE

---



### BUST

Measure under the arm and around the fullest part of the bust with arms down, keeping tape horizontal.

## COLORS

---



Deep Black  
PMS BLACK  
C



Deep Smoke  
PMS 425C



Dress Blue  
Navy  
PMS 533C