



Pixel Buds 2A

Repair manual

Version 1.1, Sep 2025



Google recommends that you seek professional assistance for all device repairs.

Self service repair isn't recommended unless you are an adult with the technical expertise to safely repair electronic devices. If you choose to perform self repair, you agree to assume the risk associated with such repair.



Use caution if you engage in repair.

When you open or repair the device, Be careful of electric shock, device damage, fire and personal injury risks, and other hazards. Before you service the product, read the full set of [precautions](#) in this document.

Welcome!

We are here to help.

At Google, we innovate, design, and build to create helpful and sustainable products. Product longevity is really important to us and repairability is part of that. Repair enables our products to stay in-use and out of landfills.

If you have any questions or need support, please reach out.

support.google.com

This manual is organized into sections for easy and intuitive navigation.



Precautions

Safety is a top priority for Google. Users should work in a safe environment and have the necessary skills and training to complete the repairs safely.



Introduction

An overview of the product parts, tools and replacement parts needed.



Disassembly

Each section contains a list, in the order of device disassembly, of prerequisite steps, tools, fixtures, and parts to complete the repair.



Assembly

For each disassembly, we provide a guide to reassembly. This may include rework steps for certain components.



Troubleshoot

Perform a few diagnostic steps to verify a successful repair.

Revision history

Version	Date	Change description
V1.0	August 12th	First release
V1.1	September 5th	Official release



Pixel Buds 2A repair manual

Precautions

Important: Before you begin



Be careful if you engage in repair

When you open or repair the device, be careful of electric shock, device damage, fire and personal injury risks, and other hazards.

Always perform repairs in a clean work space with good ventilation and no combustible materials.

Make sure that there are no additional screws or small parts are left in the device after assembly.

Always verify that screws are securely fastened.

Before you service the product, read the full set of precautions in this document.



Use caution: Batteries should be carefully handled, and could be dangerous when damaged

- Fully discharge the device battery before you attempt repair.
- Never bend, dent, puncture, or use tools to pry the battery.
- Store batteries in the replacement part packaging as soon as possible after removal to prevent damage.
- If a battery begins to vent, cover it in sand or use gloves and tongs to place the battery in a fire safe container as soon as possible.
- Take care to prevent shorting of battery terminals or damaging the battery, as it could result in fire or overheating.
- Dispose of the battery according to local regulations.



Tools

The use of Google-authorized tools is **strongly recommended** to repair a device in a safe and effective manner.

Use caution:

- We *don't* recommend that you perform repairs without the specified tools:
- Improper use of tools may result in injury to yourself, the user of the device or other third parties, as well as damage to the product, tools, fixtures, replacement parts, or other spare parts.



Important: Before you disassemble the device

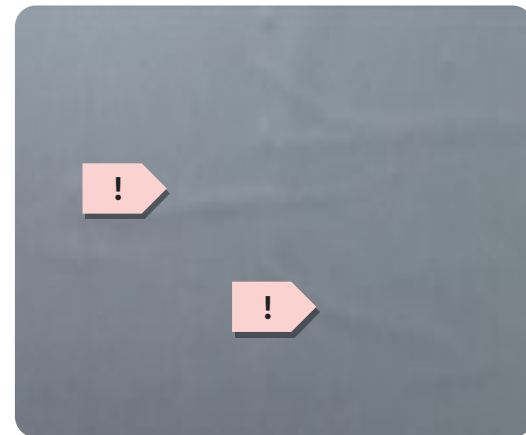
- Disconnect the device from all power sources before any disassembly.
- Make sure that the battery is fully discharged before any disassembly.
- If the battery shows signs of swelling or damage, or if the charging case feels hot or emits a strong odor, *don't* attempt disassembly. Please reach out to Google [customer support](#).
- Take care *not* to expose the charging case or its components to liquids after disassembly.

Caution ⚠️

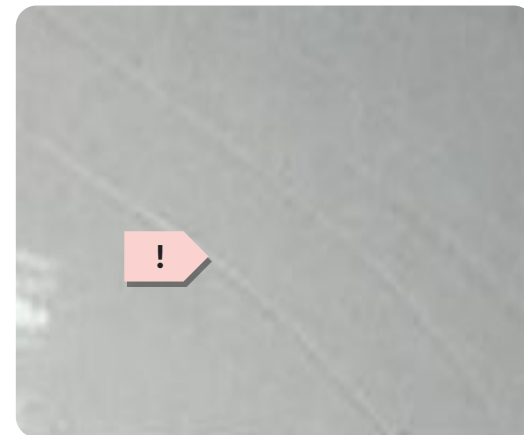
Examples of unacceptable battery conditions that are not suitable for repair*



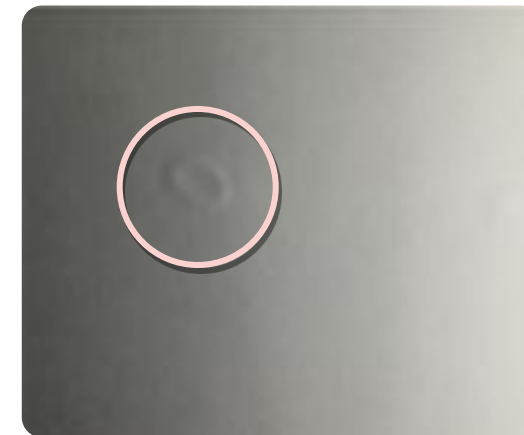
Pouch damage



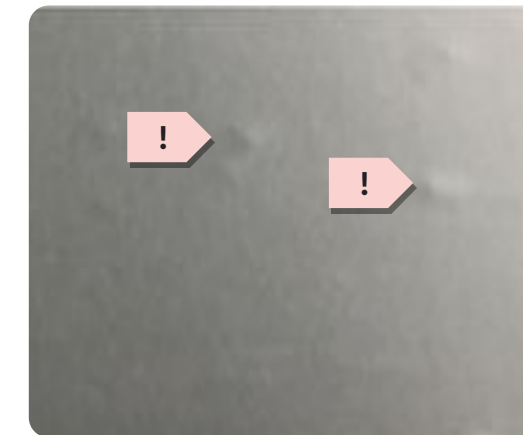
Line protrusion



Scratch



Contamination mark



Dot protrusion



The FPC falls off the battery holder



Dent



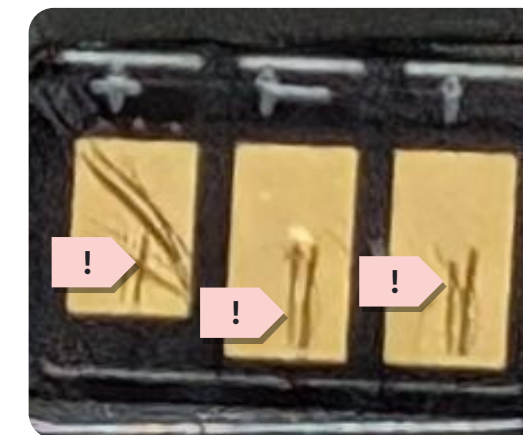
Bubbling



Imprinted line



The battery contact pad is dirty or oxidized



*These are examples of potentially dangerous battery conditions but *don't* reflect all possible dangerous conditions. Please follow the general safety guidance outlined in this document.



Pixel Buds 2A repair manual

Introduction

[Expanded view](#)

[Tools and replacement parts](#)

Pixel Buds 2A: Expanded view

Reuse indications



Reusable without rework



Not reusable after disassembly

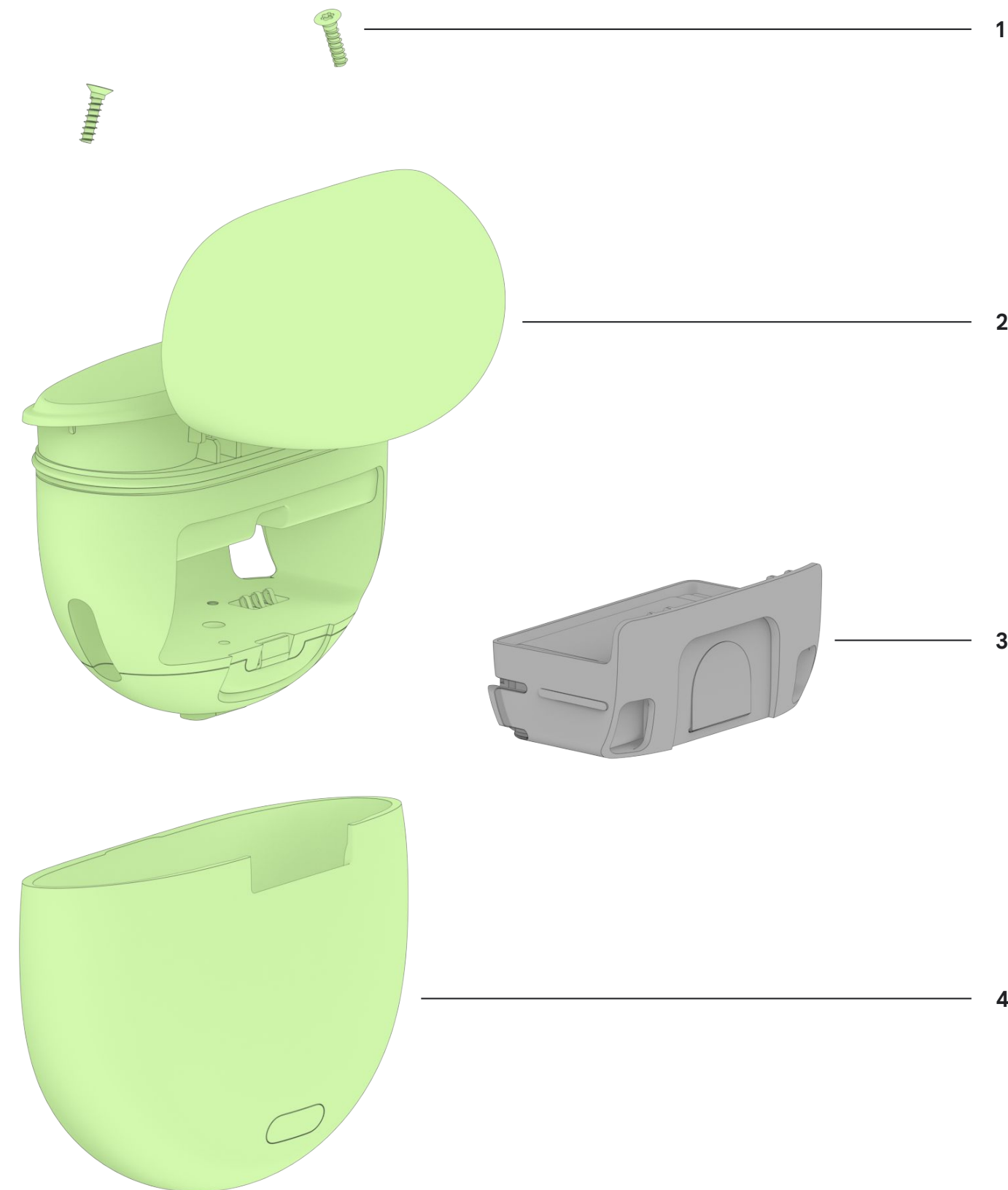
Pixel Buds 2A part ID

1 ● Screws

2 ● Internal module

3 ● Bottom cover module

4 ● Battery module



[Tools and replacement parts](#)

Standard tools

Standard tools are suggested to ensure high quality and safe repairs. These items don't need to be purchased from a Google-recommended supplier.

Torx screwdriver

Head-T5



Replacement parts

The use of Google-authorized replacement parts is strongly recommended. Performance within product specifications cannot be assured if Google-authorized replacement parts are not used.

Battery module

G949-01612-00, G949-01613-00,
G949-01614-00, G949-01615-00



Reuse indications

● Not reusable after disassembly



Use caution

Use of replacement parts other than Google-authorized replacement parts, such as aftermarket batteries, might impact device safety, reliability, and performance.



Pixel Buds 2A repair manual

Disassembly



Battery

Use caution

Use caution if you engage in repair.

When you open or repair the device, be careful of electric shock, device damage, fire and personal injury risks, and other hazards.

Before you service the product, read the full set of **precautions** in this document.

Battery handling

- Never bend, dent, puncture, or use tools to pry the battery.
- Store batteries in the replacement part packaging as soon as possible after removal to prevent damage.
- If a battery begins to vent, cover it in sand or use gloves and tongs to keep the battery in a fire safe container as soon as possible.
- Take care to prevent shorting of battery terminals or damaging the battery, as it could cause fire or overheating.
- Dispose of the battery according to local regulations.

Confirm before you proceed


- The battery is fully discharged and the device is disconnected from all power sources.
- Inspect the battery to see whether the battery shows signs of swelling, damage, or if the charging case feels hot or emits a strong odor. If so, *don't* attempt disassembly. Reach out to Google customer support instead.
- Take care not to expose the charging case or its components to liquids after disassembly.


 Parts


Battery

Here's the list of parts for the battery disassembly

Reuse indications

 Reusable without rework

 Not reusable after disassembly

Battery module 



Screw T5 



Remove the buds

- Open the case lid, as shown in **Fig 1** and **Fig 1.1**.
- Remove both buds, as shown in **Fig 2**.



Remove the case screws

- Identify the **two screws** at the bottom of the case nest, as shown in **Fig 1**.
- With a **Torx T5 screwdriver**, place your screwdriver vertically to the screw head and unscrew them, as shown in **Fig 2**.
- Make sure to keep the screws safe after removal as shown in **Fig 3**.



Use caution

Make sure to use a torx T5 screwdriver to avoid the damage to the screw heads. Be careful when you handle the screwdriver to avoid scratching adjacent plastic parts.

Improper use could result in personal injury or damage to the product.

Remove the bottom cover module

- Carefully lift up the **internal module** to separate it from the **bottom case module** as shown in **Fig 1**.
- Lift the **green tab**, and gently pull the **battery module**, as shown in **Fig 2**.
- Store the battery safely and dispose of the battery according to local regulations.



Use caution

Keep small screws and sharp objects away from the battery.

For your safety, we recommend you to install a new battery after removal. *Don't* reuse the old battery.

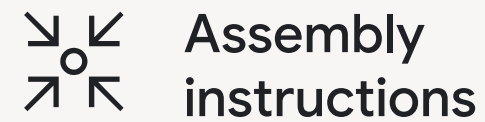


Finished! Need assembly instructions? →



Pixel Buds 2A repair manual

Assembly



Battery

Use caution

Use caution if you engage in repair.

When you open or repair the device, be careful of electric shock, device damage, fire and personal injury risks, and other hazards.

Before you service the product, read the full set of **precautions** in this document.

Battery handling

- Never bend, dent, puncture, or use tools to pry the battery.
- Store batteries in the replacement part packaging as soon as possible after removal to prevent damage.
- If a battery begins to vent, cover it in sand or use gloves and tongs to keep the battery in a fire safe container as soon as possible.
- Take care to prevent shorting of battery terminals or damage of the battery, as it could cause fire or overheating.
- Dispose of the battery according to local regulations.

Confirm before you proceed


- The battery is fully discharged and the device is disconnected from all power sources.
- Inspect the battery to see whether the battery shows signs of swelling, damage, or if the charging case feels hot or emits a strong odor. If so, *don't* attempt disassembly. Reach out to Google customer support instead.
- Take care not to expose the charging case or its components to liquids after disassembly.


 Parts


Battery

Here's the list of parts for the battery assembly

Reuse indications

 Reusable without rework

 Not reusable after disassembly

Battery module 



Screw T5 



Assemble the battery module

- Identify the replacement battery module, as shown in **Fig 1**.
- Insert the replacement battery module, as shown in **Fig 2**.
- Make sure that the replacement battery module is in the correct orientation, as shown in **Fig 3**.



Use caution

1. Before assembly, check whether there is a damage or bulge.
2. Don't use the battery if it's been dropped or punctured with a sharp object.

Fig 1



Fig 2



Fig 3



Assemble the bottom cover module and screws

- Gently push the **internal module** back into the **bottom cover module**, as shown in **Fig 1**.
- Use a **torx T5 screwdriver** to fasten the two screws back to the bottom of the case nest, as shown in **Fig 2**.



Note

Make sure to insert the internal module in the orientation shown in Fig 1.



Use caution

Use care when handling the screwdriver to avoid scratching adjacent plastic parts.

Improper use can result in personal injury or damage to the product.





Pixel Buds 2A repair manual

Troubleshoot

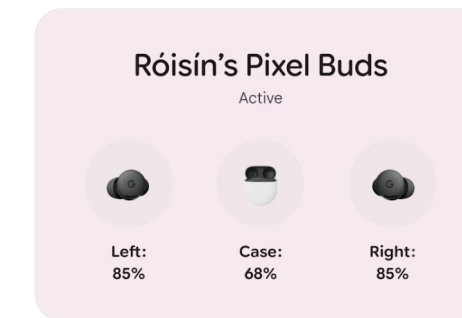
Functional check

- After you replace the battery module, connect the case to a power source with a USB-C cable to stabilize the voltage, as shown in **Fig 1**.
- Open the case lid, and put the buds back into the case. The case LED should flash to verify whether the battery is replaced successfully, as shown in **Fig 2**.



⚡ Power

Symptom	Potential root cause	Procedure
LED doesn't turn on	<p>Low charge on replacement battery</p>	<ul style="list-style-type: none"> Check the battery status with the Pixel Buds app. If necessary, charge the battery and repeat the <u>functional check</u>.
	<p>Damage and component issue</p>	<ul style="list-style-type: none"> Perform a visual inspection of the battery connector contact pads to confirm they are intact, clean, and <u>free from damage</u>. You can also confirm that the battery holds a charge by measuring the voltage directly from the positive (+ve) and negative (-ve) battery contacts. <p>*A voltage meter (multimeter) is required for battery voltage measurement.</p>



Disassembly

- Battery disassembly

