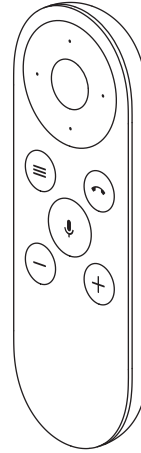


Let's Get Started

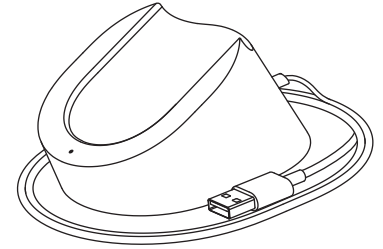


Google Meet

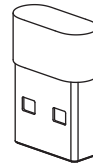
Lenovo



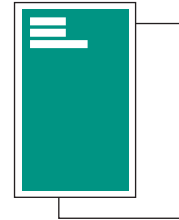
1x



1x

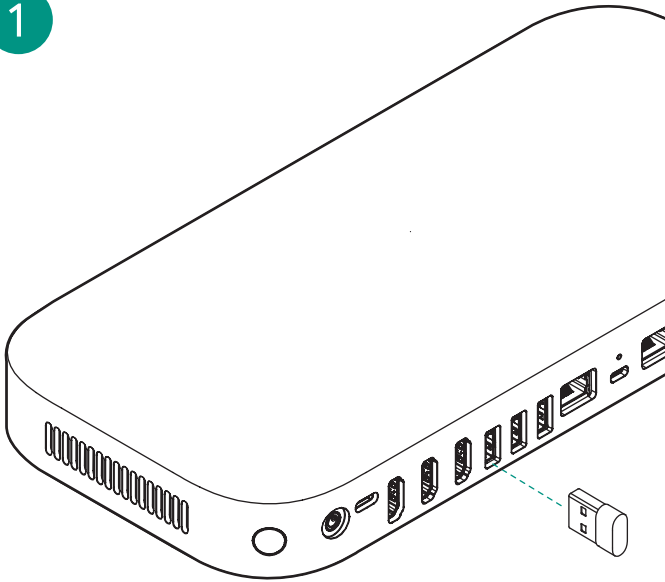


1x

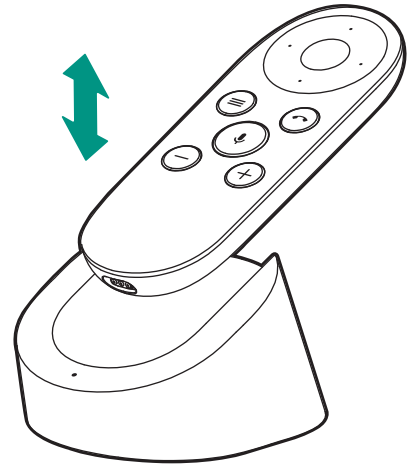


1x

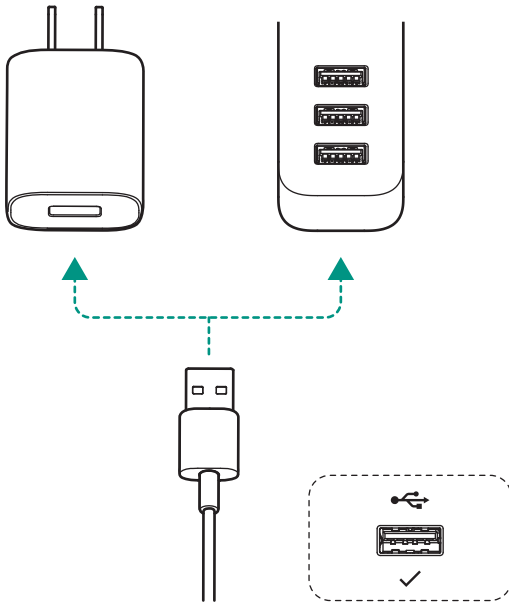
1



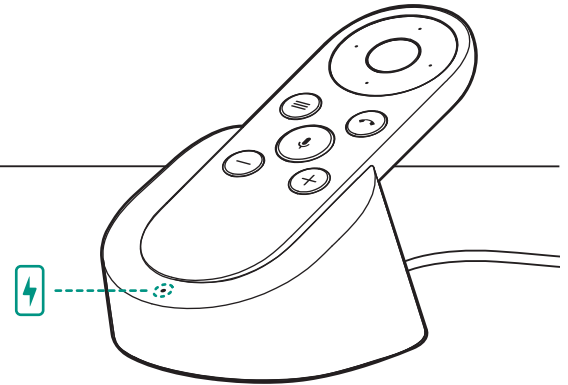
3

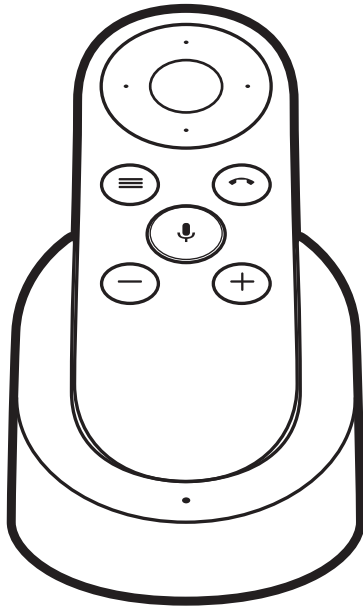


2



4





hardware.meet/start

the 1990s, the number of people in the UK who are employed in the public sector has increased from 10.5 to 13.5 million (1990–2000).

There are a number of reasons why the public sector has expanded. One reason is that the public sector has become a major employer of young people. The public sector has become a major employer of young people because it has a high proportion of young people in its workforce. This is due to a number of factors, including the fact that the public sector has a high proportion of young people in its workforce.

Another reason why the public sector has expanded is that it has become a major employer of women. The public sector has become a major employer of women because it has a high proportion of women in its workforce. This is due to a number of factors, including the fact that the public sector has a high proportion of women in its workforce.

A third reason why the public sector has expanded is that it has become a major employer of people with lower qualifications. The public sector has become a major employer of people with lower qualifications because it has a high proportion of people with lower qualifications in its workforce. This is due to a number of factors, including the fact that the public sector has a high proportion of people with lower qualifications in its workforce.

Finally, a fourth reason why the public sector has expanded is that it has become a major employer of people with lower earnings. The public sector has become a major employer of people with lower earnings because it has a high proportion of people with lower earnings in its workforce. This is due to a number of factors, including the fact that the public sector has a high proportion of people with lower earnings in its workforce.

In conclusion, the public sector has expanded significantly in the 1990s. This is due to a number of factors, including the fact that the public sector has a high proportion of young people, women, people with lower qualifications, and people with lower earnings in its workforce.

There are a number of reasons why the public sector has expanded. One reason is that the public sector has become a major employer of young people.

Another reason why the public sector has expanded is that it has become a major employer of women. The public sector has become a major employer of women because it has a high proportion of women in its workforce.

A third reason why the public sector has expanded is that it has become a major employer of people with lower qualifications. The public sector has become a major employer of people with lower qualifications because it has a high proportion of people with lower qualifications in its workforce.

Finally, a fourth reason why the public sector has expanded is that it has become a major employer of people with lower earnings. The public sector has become a major employer of people with lower earnings because it has a high proportion of people with lower earnings in its workforce.

In conclusion, the public sector has expanded significantly in the 1990s. This is due to a number of factors, including the fact that the public sector has a high proportion of young people, women, people with lower qualifications, and people with lower earnings in its workforce.

There are a number of reasons why the public sector has expanded. One reason is that the public sector has become a major employer of young people. The public sector has become a major employer of young people because it has a high proportion of young people in its workforce.

Another reason why the public sector has expanded is that it has become a major employer of women. The public sector has become a major employer of women because it has a high proportion of women in its workforce. This is due to a number of factors, including the fact that the public sector has a high proportion of women in its workforce.