



fitbit aria 2™



Product Manual

Table of Contents

- Getting started.....1
 - Intended use.....1
 - What's included.....1
 - Power on your scale.....1
- Set up Fitbit Aria 2.....3
 - Network Requirements.....3
 - Change your Wi-Fi network..... 4
- Use Fitbit Aria 25
 - Complete a weigh-in5
 - View your data5
 - Invite other users to use the scale.....5
 - Reassign a measurement..... 6
 - Choose Regular or Lean modes 6
 - Ensure accuracy..... 6
 - Factory reset.....7
- Fitbit Aria 2 General Information and Specifications..... 8
 - Sensors..... 8
 - Limitations 8
 - Batteries and power 8
 - Size and weight..... 9
 - Environmental conditions.....10
 - Care and maintenance.....10
- Regulatory and Safety Notices..... 11

USA: Federal Communications Commission (FCC) statement.....	11
Canada: Industry Canada (IC) statement.....	12
European Union (EU).....	12
Safety statement.....	14
Frequency Information.....	14
Australia and New Zealand.....	14
China.....	14
Indonesia.....	15
Israel.....	15
Japan.....	15
Oman.....	17
Philippines.....	17
Serbia.....	17
Singapore.....	18
South Africa.....	18
South Korea.....	18
United Arab Emirates.....	18
Vietnam.....	19
Environmental specifications.....	19
Battery Precautions.....	26
Disposal and Recycling Information.....	26
Help and Warranty.....	27
Help.....	27
Return policy and warranty.....	27

Getting started

Welcome to Fitbit Aria 2, the Wireless Smart Scale that uses advanced technology to measure weight, body fat percentage, and body mass index (BMI) to help you take control of your fitness.

Intended use

The Aria 2 Wireless Smart Scale is a body analyzer that measures body weight and uses bioelectrical impedance analysis (BIA) technology to estimate body fat percentage in generally healthy individuals 13 years of age or older. It is intended for home use only.

What's included

Your Fitbit Aria 2 Scale box includes:

- Fitbit Aria 2 Wireless Smart Scale
- 3 AA batteries, already installed
- Aria 2 Quick Start Guide

Power on your scale

Your Aria 2 scale is shipped with 3 AA batteries that have been previously installed. Pull the small plastic tab sticking out of the battery compartment to remove the tab and power on your scale.





WARNING

- Do not use if you have a pacemaker or any other implanted medical device or are pregnant.
- Always consult your physician to determine what is ideal for you.
- Not intended for use by children under 13 years of age.
- Aria 2 should not be used to diagnose or treat any medical condition.
- Handle the batteries in accordance with the instructions supplied by the manufacturer.

CAUTION

- Read and keep these instructions.
 - Heed all warnings.
 - Follow all instructions.
 - Exercise caution when using the scale.
 - Slippery when wet.
 - Do not use if cracks are present on the glass surface. Serious injury might occur.
 - Do not use if scale's feet are broken.
 - Do not use if anti-slip pad is missing on any of the scale's feet.
 - Do not use if any plastic parts are broken.
 - Do not drop.
 - Do not use if irritation or other reactions develop after contact with your Aria 2.
 - Do not expose your Aria 2 to extremely high or low temperatures.
 - Do not leave your Aria 2 in direct sunlight for an extended period of time.
 - Do not leave your Aria 2 scale near open flames.
 - Your scale will receive automatic firmware updates. Allow these occasional updates to complete prior to use.
-

Set up Fitbit Aria 2

Set up Fitbit Aria 2 with the Fitbit app for iPhones and iPads or Android phones. The Fitbit app is compatible with most popular phones. See [fitbit.com/devices](https://www.fitbit.com/devices) to check if your phone is compatible.

To get started:

1. Download the Fitbit app:
 - [Apple App Store](#) for iPhones
 - [Google Play Store](#) for Android phones
2. Install the app, and open it.
3. Open the Fitbit app and tap **Sign in with Google**.
4. Tap **Continue as a new user**.
5. Choose a Google Account. If you don't have a Google Account, tap **Create account**.
6. Follow the on-screen instructions to connect Aria 2 to your account and to the internet.

Network Requirements

Aria 2 connects directly to your home's Wi-Fi network and supports the following network configurations:

- Wireless 802.11b/g/n, 2.4 GHz standard
- WEP / WPA / WPA2 personal security
- Automatic (DHCP) IP setup (static IP configuration not supported)

Aria 2 requires an 802.11b/g/n-compatible network to connect and sync your scale data to your Fitbit account.

Connect your scale to your Wi-Fi network:

1. Follow the onscreen instructions to select your preferred Wi-Fi network from the list of available options. By connecting Aria 2 to your Wi-Fi network, your scale will automatically and privately transfer, or *sync*, your stats wirelessly to your Fitbit account after each use to help you track your progress.
2. Enter your Wi-Fi network password and Aria 2 will attempt to connect automatically.

NOTE: You can enter your Wi-Fi network information manually by choosing the **Other** option when selecting a network.

When you're done connecting to the Wi-Fi network, choose a personalized icon that will appear on your Aria 2's screen after each use and read through the guide about your new scale.

For step-by-step instructions, see help.fitbit.com.

Contact [Fitbit Customer Support](#) if you need help to set up, use, or maintain the Aria 2 Smart Scale or to report unexpected operations or events.

Change your Wi-Fi network

If you've changed the name, password, router, or provider of your Wi-Fi network, you'll need to reconnect your Aria 2 to the updated network using the setup method above.

For step-by-step instructions, see help.fitbit.com.

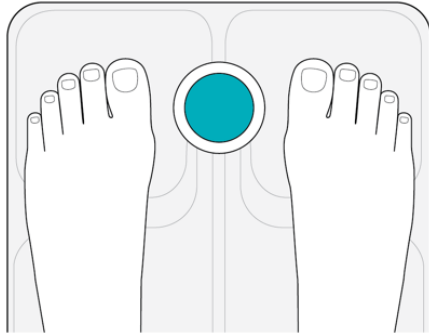
Use Fitbit Aria 2

Fitbit Aria 2 scale measures your weight, body fat percentage, and BMI. When connected your Fitbit account, measurements from your scale will automatically and privately sync to your dashboard.

Complete a weigh-in

Follow these steps to complete a weigh-in on your Aria 2:

1. Place the scale on a flat, hard surface.
2. Remove your socks and shoes and then step onto the scale while barefoot.



Aria 2 will display your weight and body fat measurement.

3. Step off the scale. Aria 2 will automatically send your stats to your dashboard.

If you see an error message on your scale, see help.fitbit.com.

View your data

After you've weighed yourself and your Aria 2 has synced, you can view your data in your dashboard. The dashboard is where you'll track progress, view your stats including lean mass on a graph, and manually enter or delete a weight.

For more information, see help.fitbit.com.

Invite other users to use the scale

Up to eight users can sync their Fitbit accounts with a single Aria 2 scale. If someone who does not have an account linked with the scale steps on the scale, only their

weight will display (body fat percentage and BMI won't appear). Registered users will see this weigh-in attributed to "Guest".

For step-by-step instructions, see help.fitbit.com.

Reassign a measurement

If two users on the same scale are close in weight or body composition, your Aria 2 will prompt you to select the correct user noted by their personalized icon. If an incorrect user is chosen, or if a weight is improperly attributed, you can reassign it to the correct user in the Fitbit app or on the fitbit.com website.

For step-by-step instructions, see help.fitbit.com.

If your scale consistently recognizes you as a guest, see help.fitbit.com.

Choose Regular or Lean modes

"Lean" mode is intended for professional or very high-level athletes like marathon runners or body builders. Individuals with exceptionally low body fat relative to their muscle mass may want to consider lean mode to improve the scale's accuracy; however, many very fit and active people still get more accurate readings in "Regular" mode, which is appropriate for most users.

For step-by-step instructions, help.fitbit.com.

Ensure accuracy

Use these tips to get the most accurate and consistent readings from your scale:

- Use your Aria 2 while barefoot. The scale cannot measure body fat percentage if you're wearing shoes or socks.
- Make sure your feet are dry before weighing yourself.
- Place your Aria 2 on a hard, flat surface during use. Using the scale on a soft surface - like carpet or linoleum - may affect the accuracy of the Aria 2's readings.
- Balance your weight evenly between both feet while standing on the scale.
- Weigh yourself at the same time each day to see consistent trends. Your weight and body fat percentage will naturally vary over the course of the day.

- If your Aria 2 is picked up and moved between measurements, or stored sideways against a wall when not in use, the scale will go through a calibration process the next time it is used for weighing. Up to two consecutive weigh-ins will then be required before your scale is recalibrated and again displays consistently accurate measurements.

NOTE: Body fat percentage, BMI, and lean mass measurements require that your Aria 2 scale has been set up with your Fitbit account. You do not need to complete this setup to weigh yourself.

Factory reset

Factory reset clears all user data from the scale including stored weights and Wi-Fi networks. To factory reset your scale, complete these steps:

1. Turn your scale over and pull up on the tab to remove the cover from the battery compartment.
2. Remove the batteries.
3. Press down on the small button directly above the battery slots.
4. While continuing to press down on the button, reinsert the batteries. Be sure to press down on the button for at least ten seconds.
5. Return the cover to the battery compartment and press down until it's secure.
6. Turn your scale over to begin the setup process.

Fitbit Aria 2 General Information and Specifications

Sensors

Four load cells measure weight. Body fat information is measured through electrical impedance and calculated based on weight and user account data.

The scale measures body fat using bioimpedance analysis. Indium tin oxide (ITO) electrodes form a pattern on the top of scale and send a small, safe signal through the body to measure impedance.

Limitations

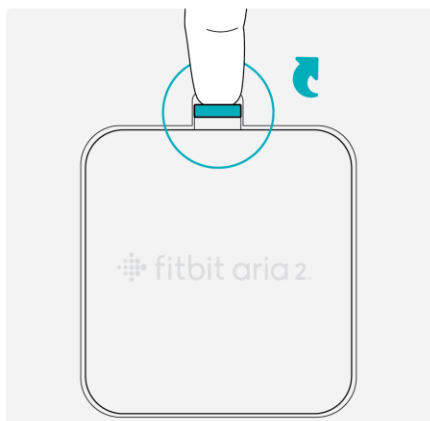
- The scale's weight range is 10-400 lbs. (4.5-181.4 kg).
- The owner is the intended operator of Aria 2.
- Aria 2 is not user serviceable. If you need assistance with your scale, [contact support](#).

Batteries and power

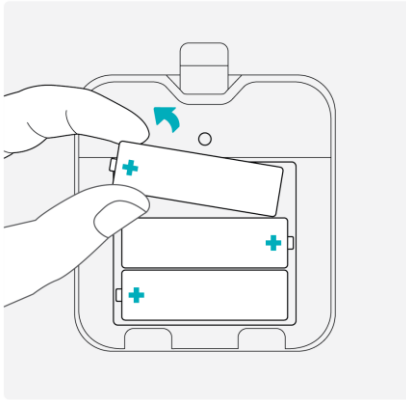
- 3 alkaline 1.5V size AA batteries included (Operating: 4.5V nominal)
- No power cord necessary

To change the batteries in your Aria 2, complete these steps:

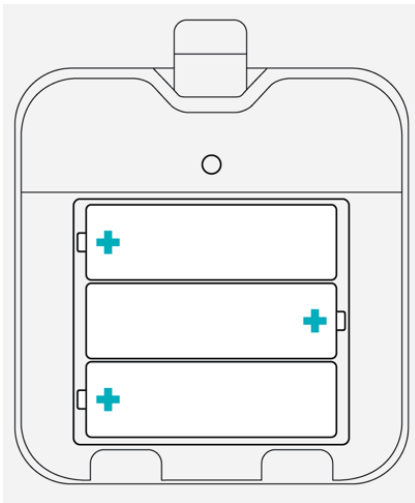
1. Turn your scale over and pull up on the tab to remove the cover from the battery compartment.



2. Remove the batteries.



3. Insert 3 alkaline 1.5V size AA batteries as shown in the compartment.



4. Return the cover to the battery compartment and press down until it's secure.
5. Turn your scale over and wait a few moments for Aria 2 to calibrate before starting your weigh-in.

Alkaline 1.5V batteries used with Aria have a typical battery life of about 1 year. Your results may vary, depending on your battery model. Replace batteries as needed.

Size and weight

	Length	Width	Depth	Weight
Aria 2 Scale	12.3in 31.2cm	12.3in 31.2cm	1.3in 31.9mm	4.7lbs. 2.13kg

Environmental conditions

Operating Temperature	41° to 104° F (5° to 40° C)
Relative Humidity	Up to 93% RH Aria 2 is designed to operate in a humid bathroom environment.
Storage and Transportation	-25°C to 70°C Up to 93% RH
Environmental Pressure Range	700kPa to 1060kPa
Ingress Protection	IP53: Symbol indicates that the scale is dust and water resistant.

NOTE: You will see the most consistent and reliable readings when placing your Aria 2 scale on a hard, flat surface.

Care and maintenance

Clean Aria 2 as needed to remove dust and soil. To clean your scale, follow these tips:

- Wipe down the surface with a damp cloth using a mild detergent before your first use.
- Do not submerge Aria 2 or use high-pressure water jets (e.g. shower head) to clean the surface.
- Do not use antiseptic wipes, chlorine, or highly concentrated glass cleaner on the surface of the scale.
- Do not use abrasive cleaners to clean your scale.

Regulatory and Safety Notices

Model Name: FB202



The scale measures body fat using bioimpedance analysis. ITO electrodes form a pattern on the top of scale, and send a small, safe signal through the body to measure impedance.

Type BF Applied Part

This symbol indicates that the surface scale is a Type BF applied part intended to deliver an electrophysiological signal to and from the user. The scale measures body mass using bioimpedance analysis. ITO electrodes form a pattern on the top of scale, and send a small, safe signal through the body to measure impedance.

Aria 2 is not considered a medical device in all countries below except for the U.S.

USA: Federal Communications Commission (FCC) statement

This device complies with Part 15 of the FCC Rules.

Operation is subject to the following two conditions:

This device may not cause harmful interference and

This device must accept any interference received, including interference that may cause undesired operation

FCC Warning

Changes or modifications not approved by Fitbit, Inc. could void the user's authority to operate the equipment.

Note: This equipment has been tested and found to comply with the limits for a Class B digital device, pursuant to part 15 of the FCC Rules. These limits are designed to provide reasonable protection against harmful interference in a residential installation. This equipment generates, uses and can radiate radio frequency energy and, if not installed and used in accordance with the instructions, may cause harmful interference to radio communications. However, there is no guarantee that interference will not occur in a particular installation. If this equipment does cause harmful interference to radio or television reception, which can be determined by turning the equipment off and on, the user is encouraged to try to correct the interference by one or more of the following measures:

Reorient or relocate the receiving antenna

Increase the separation between the equipment and receiver

Connect the equipment into an outlet on a circuit different from that to which the receiver is connected.

Consult the dealer or an experienced radio/TV technician for help.

This device meets the FCC requirements for RF exposure in public or uncontrolled environments.

FCC ID: XRAFB202

Canada: Industry Canada (IC) statement

This device meets the IC requirements for RF exposure in public or uncontrolled environments.

Cet appareil est conforme aux conditions de la IC en matière de RF dans des environnements publics ou incontrôlée

IC Notice to Users in accordance with the current RSS GEN:

This device complies with Industry Canada license exempt RSS standard(s).

Operation is subject to the following two conditions:

1. this device may not cause interference, and
2. this device must accept any interference, including interference that may cause undesired operation of the device

Cet appareil est conforme avec Industrie Canada RSS standard exempts de licence (s). Son utilisation est soumise à Les deux conditions suivantes:

1. Cet appareil ne peut pas provoquer d'interférences et
2. Cet appareil doit accepter Toute interférence, y compris les interférences qui peuvent causer un mauvais fonctionnement du dispositif

IC: 8542A-FB202

European Union (EU)

Simplified EU Declaration of Conformity

Hereby, Fitbit, Inc. declares that the radio equipment type Model FB202 is in compliance with Directive 2014/53/EU. The full text of the EU declaration of conformity is available at the following internet address:

<http://www.fitbit.com/safety>.

Déclaration UE de conformité simplifiée

Fitbit, Inc. déclare par la présente que les modèles d'appareils radio FB202 sont conformes à la Directive 2014/53/UE. Les déclarations UE de conformité sont disponibles dans leur intégralité sur le site suivant: www.fitbit.com/safety.

Dichiarazione di conformità UE semplificata

Fitbit, Inc. dichiara che il tipo di apparecchiatura radio Modello FB202 è conforme alla Direttiva 2014/53/UE. Il testo completo della dichiarazione di conformità UE è disponibile al seguente indirizzo Internet: www.fitbit.com/safety.

Vereinfachte EU-Konformitätserklärung

Fitbit, Inc. erklärt hiermit, dass die Funkgerätypen Modell FB202 die Richtlinie 2014/53/EU erfüllen. Der vollständige Wortlaut der EU-Konformitätserklärungen kann unter folgender Internetadresse abgerufen werden: www.fitbit.com/safety.

Declaración UE de Conformidad simplificada

Por la presente, Fitbit, Inc. declara que el tipo de dispositivo de radio Modelo FB202 cumple con la Directiva 2014/53/UE. El texto completo de la declaración de conformidad de la UE está disponible en la siguiente dirección de Internet: www.fitbit.com/safety.



Safety statement

This equipment has been tested to comply with safety certification in accordance with the specifications of EN Standard: EN60950-1:2006 + A11:2009 + A1:2010 + A12:2011 + A2:2013.

The complete Declaration of Conformity can be found at <https://www.fitbit.com/legal/safety-instructions>

Frequency Information

Frequency range (MHz): 2400-2483.5

Highest EIRP power in the range (dBm): 19.96

Australia and New Zealand



China

部件名称	有毒和危险品					
	铅 (Pb)	水银 (Hg)	镉 (Cd)	六价铬 (Cr(VI))	多溴化苯 (PBB)	多溴化二苯醚 (PBDE)
Aria 2 FB202						
塑料外壳	○	○	○	○	○	○
电子	X	○	○	○	○	○
电池	○	○	○	○	○	○

本表格依据 SJ/T 11364 的规定编制

○: 表示该项目中涉及的所有物料, 其包含的有害物质的含量低于 GB/T 26572. 标准的限制要求.

X: 表示该项目中涉及的所有物料中至少有一种, 其包含的有害物质的含量高于 GB/T 26572. 标准的限制要求.



Indonesia

54754/SDPPI/2018
3788

Israel

אישור התאמה 51-61295

אי לבצע כל שינוי טכני בחלק המודולארי של המוצר.

Japan



R

201-170701

必要に応じて、電池を交換してください。

輸入事業者：株式会社美貴本 大阪府大阪市西区京町堀3-9-8

Fitbit Aria2 FB202BKJ/FB202WTJ - 体重計

計量範囲：4.5kg(測定下限値)-181.0kg(最大計量)

目量(最小表示)：±200g

この体重計は JIS(家庭用はかり)に定められた技術基準で製造し出荷しております。
はかられた体重に対してのメーカー保証精度は下表の通りです。

計量範囲	計量精度
4.5kg を超え 90.5kg まで	±400g
90.5kg を超え 181.0kg まで	±600g

(お問い合わせ先)

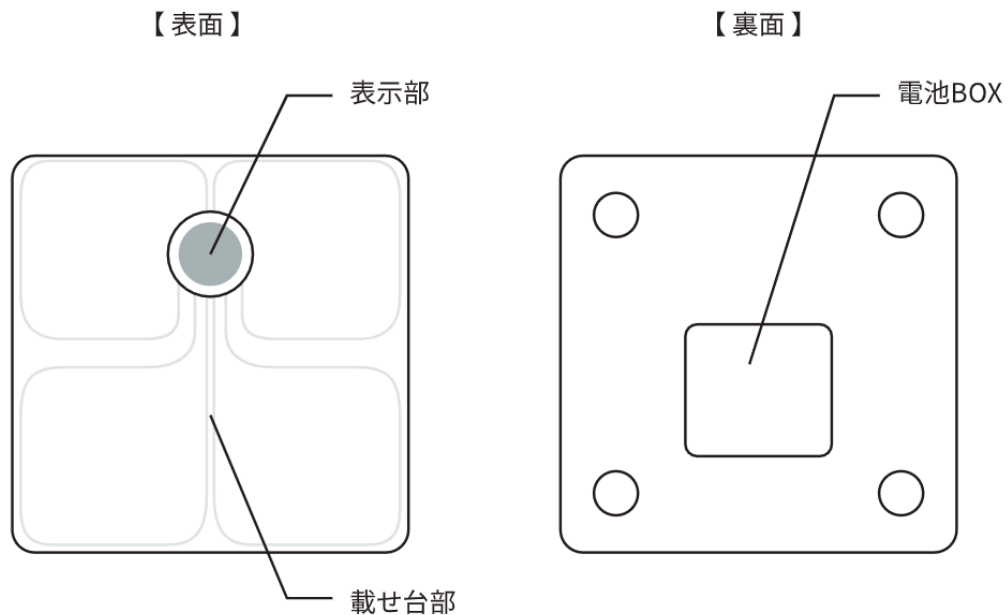
Fitbit カスタマーサポートセンター：TEL 0120-998-549

受付時間：平日 9:00 ~ 18:00 (土、日、祝祭日、年末年始、弊社指定休業日を除く)

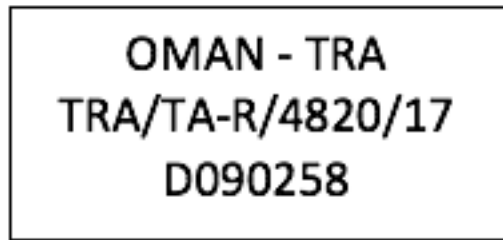
お問い合わせ URL：help.fitbit.com

※体重以外の測定項目は、体の電気抵抗値等が算出した推定値です。

主要部の名称および機能



Oman



Philippines

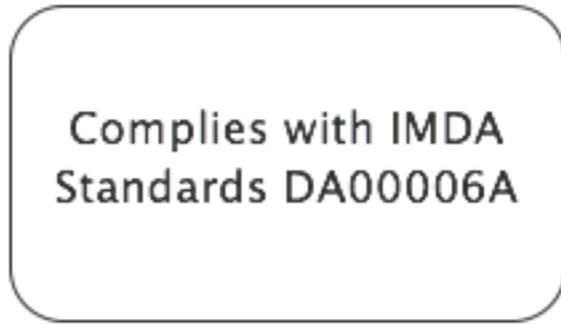


Serbia



И 005 17

Singapore



South Africa



TA-2017/1618
APPROVED

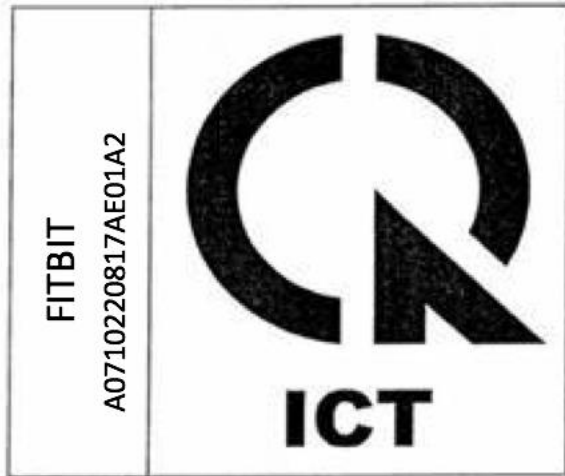
South Korea

클래스 B 장치 (가정 사용을 위한 방송 통신 기기) : EMC 등록 주로 가정용 (B 급)으로하고, 모든 지역에서 사용할 수 있습니다. **얼음이 장치. " 해당 무선설비는 전파혼신 가능성이 있으므로 인명안전과 관련된 서비스는 할 수 없습니다. "**

United Arab Emirates

TRA Registered No.: ER56880/17
Dealer No.: 35294/14

Vietnam



Environmental specifications

Guidance and manufacturer's declaration – electromagnetic emissions		
The Aria 2 Wireless Smart Scale is intended for use in the electromagnetic environment specified below. The customer or the user of the Aria 2 Wireless Smart Scale should assure that it is used in such an environment.		
Emissions test	Compliance	Electromagnetic environment - guidance
RF emissions CISPR 11	Group 1	The Aria 2 Wireless Smart Scale uses RF energy only for its internal function. Therefore, its RF emissions are very low and are not likely to cause any interference in nearby electronic equipment.

RF emissions CISPR 11	Class B	The Aria 2 Wireless Smart Scale is suitable for use in all establishments other than domestic and those directly connected to the public low-voltage power supply network that supplies buildings used for domestic purposes.
Harmonic emissions IEC 61000-3-2	Not Applicable	
Voltage fluctuations/flicker emissions IEC 61000-3-3	Not Applicable	

Guidance and manufacturer's declaration – electromagnetic immunity			
The Aria 2 Wireless Smart Scale is intended for use in the electromagnetic environment specified below. The customer or the user of the Aria 2 Wireless Smart Scale should assure that it is used in such an environment.			
Immunity test	IEC 60601 test level	Compliance level	Electromagnetic environment - guidance
Electrostatic Discharge (ESD) IEC 61000-4-2	± 8 kV contact ± 15 kV air	± 8 kV contact ± 15 kV air	Floors should be wood, concrete or ceramic tile. If floors are covered with synthetic material, the relative humidity should be at least 30 %.
Electrical fast transient/burst IEC 61000-4-4	± 2 kV for power supply lines ± 1 kV for input/output lines	Not applicable	Not applicable

<p>Surge</p> <p>IEC 61000-4-5</p>	<p>± 1 kV line(s) to line(s)</p> <p>± 2 kV line(s) to earth</p>	<p>Not applicable</p>	<p>Not applicable</p>
<p>Voltage dips and interruptions</p> <p>IEC 61000-4-11</p>	<p>0 % UT; 0.5 cycle</p> <p>At 0°, 45°, 90°, 135°, 180°, 225°, 270° and 315°</p>	<p>Not applicable</p>	<p>Not applicable</p>
	<p>0 % UT; 1 cycle and</p> <p>70 % UT; 25/30 cycles</p> <p>Single phase: at 0°</p>		
	<p>0 % UT; 250/300 cycle</p>		
<p>Power frequency (50/60 Hz) magnetic field</p> <p>IEC 61000-4-8</p>	<p>30 A/m</p>	<p>30 A/m</p>	<p>Power frequency magnetic fields should be at levels characteristic of a typical location in a typical commercial or hospital environment.</p>

Note: U_t is the a.c. mains voltage prior to application of the test levels.


The Aria 2 Wireless Smart Scale has no essential performance per IEC 60601-1-2

In accordance with IEC 60601-1 Aria 2 Wireless Smart Scale users are intended operators and may perform described functions and described maintenance while the device is not in use.

WARNING: Use of this equipment adjacent to or stacked with other equipment should be avoided because it could result in improper operation. If such use is necessary, this equipment and the other equipment should be observed to verify that they are operating normally.

Follow ESD precautions to prevent damage and to protect against potential hazards such as electric shock.

Guidance and manufacturer's declaration – electromagnetic immunity			
The Aria 2 Wireless Smart Scale is intended for use in the electromagnetic environment specified below. The customer or the user of the Aria 2 Wireless Smart Scale should assure that it is used in such an environment.			
Immunity test	IEC 60601 test level	Compliance level	Electromagnetic environment - guidance
Conducted RF	3 Vrms	Not applicable	<p>Portable and mobile RF communication equipment should be no closer to any part of the Aria 2 Wireless Smart Scale, including cables, than the recommended separation distance calculated from the equation applicable to the frequency of the transmitter.</p> <p>Recommended separation distance</p>

IEC 61000-4-6	150 kHz to 80 MHz		Not applicable
Radiated RF	10 V/m	10 V/m	<p data-bbox="1010 472 1432 556">$d = 1.17 \cdot \sqrt{P}$ 80 MHz to 800 MHz</p> <p data-bbox="1010 640 1432 724">$d = 2.33 \cdot \sqrt{P}$ 800 MHz to 2.5 GHz</p> <p data-bbox="1010 829 1432 1123">Where P is the maximum output power rating of the transmitter in watts (W) according to the transmitter manufacturer and d is the recommended separation distance in metres (m).</p> <p data-bbox="1010 1228 1432 1501">Field strengths from fixed RF transmitters, as determined by an electromagnetic site survey^a, should be less than the compliance level in each frequency range^b.</p> <p data-bbox="1010 1596 1432 1743">Interference may occur in the vicinity of equipment marked with the following symbol:</p> 
IEC61000-4-3	80 MHz to 2.7 GHz 80% AM at 1kHz		

<p>Note 1 At 80 MHz and 800 MHz, the higher frequency range applies.</p> <p>Note 2 These guidelines may not apply in all situations. Electromagnetic propagation is affected by absorption and reflection from structures, objects and people.</p>			
<p>^a Field strengths from fixed transmitters, such as base stations for radio (cellular/cordless) telephones and land mobile radios, amateur radio, AM and FM radio broadcast and TV broadcast cannot be predicted theoretically with accuracy. To assess the electromagnetic environment due to fixed RF transmitters, an electromagnetic site survey should be considered. If the measured field strength in the location in which the Aria 2 Wireless Smart Scale is used exceeds the applicable RF compliance level above, the Aria 2 Wireless Smart Scale should be observed to verify normal operation. If abnormal performance is observed, additional measures maybe necessary, such as re-orienting or relocating the Aria 2 Wireless Smart Scale.</p> <p>^b Over the frequency range 150 kHz to 80 MHz, field strengths should be less than 3 V/m.</p>			

<p>Recommended separation distances between portable and mobile RF communication equipment and the Aria 2 Wireless Smart Scale</p>	
<p>The Aria 2 Wireless Smart Scale is intended for use in an electromagnetic environment in which radiated RF disturbances are controlled. The customer or the user of the Aria 2 Wireless Smart Scale can help prevent electromagnetic interference by maintaining a minimum distance between portable and mobile RF communications equipment (transmitters) and the Aria 2 Wireless Smart Scale as recommended below, according to the maximum output power of the communications equipment.</p>	
	<p>Separation distance according to frequency of transmitter</p> <p>m</p>

Rated maximum output power of transmitter W	150 kHz to 80 MHz $d = 1.17 * \sqrt{P}$	80 MHz to 800 MHz $d = 1.17 * \sqrt{P}$	800 MHz to 2.5 GHz $d = 2.33 * \sqrt{P}$
0.01	Not applicable	0.12	0.23
0.1	Not applicable	0.37	0.74
1	Not applicable	1.17	2.33
10	Not applicable	3.7	7.37
100	Not applicable	11.7	23.3

For transmitters rated a maximum output power not listed above, the recommended separation distance d in metres (m) can be estimated using the equation applicable to the frequency of the transmitter, where P is the maximum output power rating of the transmitter in watts (W) according to the transmitter manufacturer.

Note 2 At 80 MHz and 800 MHz, the separation distance for the higher frequency range applies.

Note 2 These guidelines may not apply in all situations. Electromagnetic propagation is affected by absorption and reflection for structures, objects and people.

The Aria 2 Wireless Smart Scale complies with the Wireless IEEE 802.11b (CCK/BPSK modulation) operating in the 2400-2483.5MHz band. The effective Radiated Output Power is 25 dBm.

Portable and mobile RF communications equipment can affect the operation of the Aria 2 Wireless Smart Scale, even if that equipment complies with CISPR emissions requirements.

Battery Precautions

Handle the battery in accordance with the instructions supplied by the manufacturer.

Disposal and Recycling Information



The symbol on the product or its packaging signifies that this product has to be disposed separately from ordinary household wastes at its end of life. Please kindly be aware that this is your responsibility to dispose electronic equipment at recycling centers so as to help conserve natural resources. Each country in the European Union should have its collection centers for electrical and electronic equipment recycling. For information about your recycling drop off area, please contact your local related electrical and electronic equipment waste management authority or the retailer where you bought the product.

Le symbole sur le produit ou sur son emballage signifie que ce produit à la fin de sa vie doit être recyclé séparément des déchets ménagers ordinaires. Notez que ceci est votre responsabilité d'éliminer les équipements électroniques à des centres de recyclage afin d'aider à préserver les ressources naturelles. Chaque pays de l'Union européenne a ses centres de collecte et de recyclage pour le recyclage des équipements électriques et électroniques. Pour plus d'informations ou trouver un centre de recyclage, contactez votre commune ou le magasin où vous avez acheté le produit.

- Do not dispose of the Aria 2 scale with household waste.
- Batteries are not to be disposed of in municipal waste stream and require separate collection.
- Disposal of the packaging and your Aria scale should be done in accordance with local regulations.



Help and Warranty

Help

Troubleshooting and assistance for your Aria 2 may be found at help.fitbit.com.

Return policy and warranty

Warranty information and the Fitbit.com Store Return Policy may be found at fitbit.com/returns.

©2022 Fitbit LLC. All rights reserved. Fitbit and the Fitbit logo are trademarks or registered trademarks of Fitbit in the US and other countries. A more complete list of Fitbit trademarks can be found at [Fitbit Trademark List](#). Third-party trademarks mentioned are the property of their respective owners.

