

markoTM
heating

OIL Heater

INSTRUCTION MANUAL



Models covered by this instruction sheet:

- MHT-0715 (SH-29-7) - 1500W Oil filled radiator, 7 fin
- MHT-0920 (SH-29-9) - 2000W Oil filled radiator, 9 fin
- MHT-01125 (SH-29-11) - 2500W Oil filled radiator, 11 fin

220-240V, 50Hz

DO NOT TURN HEATER UPSIDE-DOWN DURING OPERATION.

This product is only suitable for well insulated spaces or occasional use.



INTRODUCTION

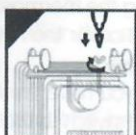
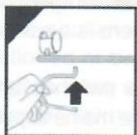
Thank you for purchasing our Oil-Filled Radiator. Each unit has been manufactured to ensure safety and reliability. Before first use, please read the instructions carefully and keep them for further reference.

ASSEMBLY OF THE HEATER

Remove the heater and all the accessories from the carton. The wheels must be fitted to the heater in accordance with the details below.

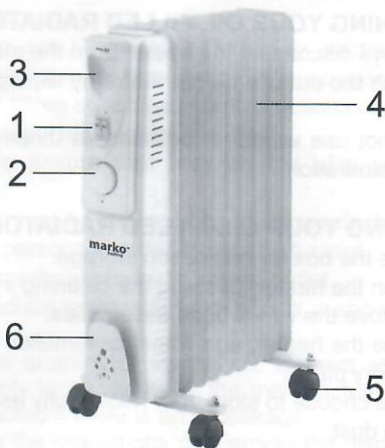
NOTE: - It is important that the wheel assemblies are fitted to the correct (i.e. bottom) end of the heater.

1. Turn the heater upside down.
2. Position the wheel base assemblies between the end fins.
3. Attach them to the heater using the U-bolts and wing nuts supplied.
4. Tighten the wing nuts.
5. Attach the castors to the plates with the nuts provided.
6. Turn the heater the right way up.



PARTS DESCRIPTION

1. Power switch
2. Thermostat knob
3. Handle
4. Oil filled fins
5. Castors
6. Cord storage



OPERATING YOUR OIL-FILLED RADIATOR

Place the heater on the floor at least 90 cm away from the wall and any other objects such as furniture, curtains or plants.

(Make sure the power supply used corresponds to the one on the rating label)

With the thermostat control switch and the power setting switches in the '0' position, plug the heater into the main power supply.

1. Room temperature can be adjusted using the thermostat. Simply. Turn the thermostat knob clockwise, to increase the heat, and anti-clockwise to decrease the temperature, until you reach the desired temperature.
2. Switch the heater to one of the following power settings.

Model:

MHT-O715 (SH-29-7) = 1500W = 3 positions (600, 900, 1500W)

MHT-O920 (SH-29-9) = 2000W = 3 positions (800, 1200, 2000W)

MHT-O1125 (SH-29-11) = 2500 W = 3 positions (1000, 1500, 2500W)

3. The power switch lights up when activated.
4. Turning the thermostat control clockwise will increase the "set" temperature.
5. Turning the thermostat anti-clockwise will decrease the "set" temperature.
6. Do not cover the heater at any time during operation. There is a risk of fire if the heater is covered.
7. Once you have finished using your heater, turn the power switches, and the thermostat control switch to the "LOW" positions, and unplug from the mains supply.

NOTE: - When the heaters are turned on for the first time or after having not been used for a long period, the heaters may emit some smell and fumes. This will disappear when the heater has been on a short while.

CLEANING YOUR OIL-FILLED RADIATOR

1. Always disconnect the heater from the mains supply before cleaning.
2. Clean the outside of the heater by wiping with a damp cloth and buff with a dry cloth.
3. Do not use waxes or polishes as these may react with the heater and cause discolouration.

STORING YOUR OIL-FILLED RADIATOR

1. Save the box for off season storage.
2. Clean the heater following the cleaning instructions above.
3. Remove the wheel base assemblies.
4. Place the heater, and wheel assemblies in the original box, and store in a cool and dry place.
5. If you choose to store your heater fully assembled be sure to cover it to protect it from dust.

IMPORTANT! SAFETY GUIDELINES

1. Read the instructions carefully before use and save them for future reference.
2. Always disconnect the heater from the main supply when not in use and when cleaning.
3. Do not leave the heater "ON" unattended.
4. The heater should always be kept upright.
5. Check that your supply voltage is the same as that shown on the rating label and the socket is earthed.
6. It is normal for the heater to make a noise when it is being used for the first time.
7. In order to avoid overheating, do not cover the heater.
8. Keep the heater a distance of at least 90 cm from any combustible material, such as furniture, curtains, bedding cloths or papers.
9. Keep the heater clean. Do not allow objects to enter the ventilation, as this may cause electric shock, fire or damage the heater.
10. Close supervision is required when any appliance is used near or by children.
11. Never allow the cord to touch wet or hot surfaces, become twisted or be within the reach of children.
12. Do not place on or near a hot gas or electric burner.
13. Never use the appliance with a damaged cord or plug or after the appliance has malfunctioned or been damaged in any way.
14. Never attempt to open any part or dismantle the controls.
Responsibility for failure cannot be accepted if these instructions have been ignored.
15. Do not use the appliance for anything other than its intended use.
16. This appliance is intended for household use only, do not use outdoors.
17. Any repairs that need to be done to the heater must be referred to an authorized service agent only.
18. The appliance is not intended for use by persons (including children) with reduced physical, sensory or mental capabilities, or lack of experience and knowledge, unless they have been given supervision or instruction concerning use of the appliance by a person responsible for their safety.
Children should be supervised to ensure that they do not play with the appliance.
19. If the supply cord is damaged, it must be replaced by the manufacturer, its service agent or similarly qualified persons in order to avoid a hazard.
20. The heater must not be located immediately below a socket outlet.
21. Do not use this heater in the immediate surroundings of a bath, a shower or a swimming pool.
22. The heater is filled with a precise quantity of special oil. Repairs requiring opening of the oil container are only to be made by the manufacturer or his service agent who should be contacted if there is an oil leakage.
When scrapping the heater, follow the regulations concerning the disposal of oil.

Model identifier(s): MHT-0715 MHT-0920 MHT-01125					
Item	Symbol	Value	Unit	Item	Unit
Heat output				Type of heat input, for electric storage local space heaters only (select one)	
Nominal heat output	P_{nom}	1.5/2.0/2.5	kW	manual heat charge control, with integrated thermostat	[no]
Minimum heat output (indicative)	P_{min}	0.8/0.8/0.8	kW	manual heat charge control with room and/or outdoor temperature feedback	[no]
Maximum continuous heat output	$P_{max,c}$	1.5/20/2.5	kW	electronic heat charge control with room and/or outdoor temperature feedback	[no]
Auxiliary electricity consumption				fan assisted heat output	[no]
At nominal heat output	eI_{max}	N/A	kW	Type of heat output/room temperature control (select one)	
At minimum heat output	eI_{min}	N/A	kW	single stage heat output and no room temperature control	[no]
In standby mode	eI_{SB}	0.000002	kW	Two or more manual stages, no room temperature control	[no]
				with mechanic thermostat room temperature control	[no]
				with electronic room temperature control	[no]
				electronic room temperature control plus day timer	[YES]
				electronic room temperature control plus week timer	[no]
				Other control options (multiple selections possible)	
				room temperature control, with presence detection	[no]
				room temperature control, with open window detection	[no]
				with distance control option	[no]
				with adaptive start control	[no]
				with working time limitation	[YES]
				with black bulb sensor	[no]
Contact details					