

SENSOR-DRIVEN END-TO-END VISIBILITY

Tive helps companies achieve real-time in-transit visibility of their goods around the globe. We work with clients including Fortune 1000 shippers and logistics providers to track and monitor the condition of their goods-in-transit. Over time, proprietary data generated by our sensors allows our clients to be proactive with their shipments, improve their customers' experience, and unlock a new level of supply chain insights.



EASY DEPLOYMENT

Get started fast, no complex software or physical infrastructure required



INTEGRATE INTO YOUR ECOSYSTEM

Set custom alerts, configure geofences, and use pull data directly into your TMS or ERP



GLOBAL COVERAGE

Monitor goods across transit modes, all around the world, for over a year



Predict and avoid late deliveries



Reduce damage to goods



Improve customer satisfaction



Lower inventory levels and order lead times

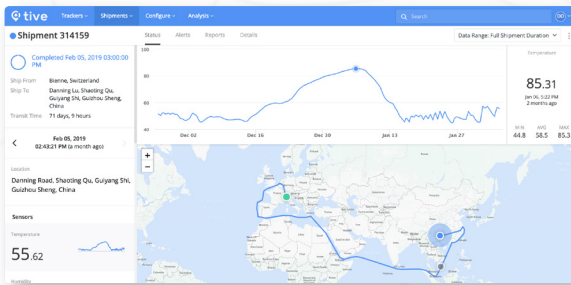
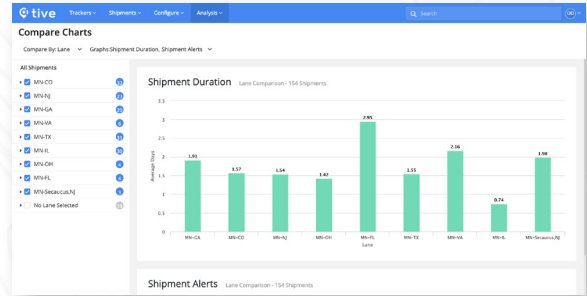
Turn Insight Into Action

MAP YOUR VALUE STREAM

Map the dynamics and flow of your goods throughout your value chain, down to the package and SKU level.

ACT, DON'T REACT

Don't wait for your customers to tell you about a late or damaged shipment. Real-time data gives you the insights you need to proactively contact customers as soon in-transit issues occur.



COLLABORATE WITH SUPPLY CHAIN PARTNERS

Comprehensive shipment data enables you to understand and compare carriers' performance over time, analyzing trends across lanes to inform better decisions.



Sensor data made possible by the Tive tracker portfolio

Our proprietary low-power multi-sensor tracker uses cellular connectivity to provide real-time monitoring of shipments so you are always aware of location, climate, and shipment integrity.



Location



Temperature



Humidity



Shock



Motion



Light