



Annual Report

Transitions - Mental Health Association

Inspiring hope, growth, recovery and wellness in our communities

Fiscal Year 2014 – 2015

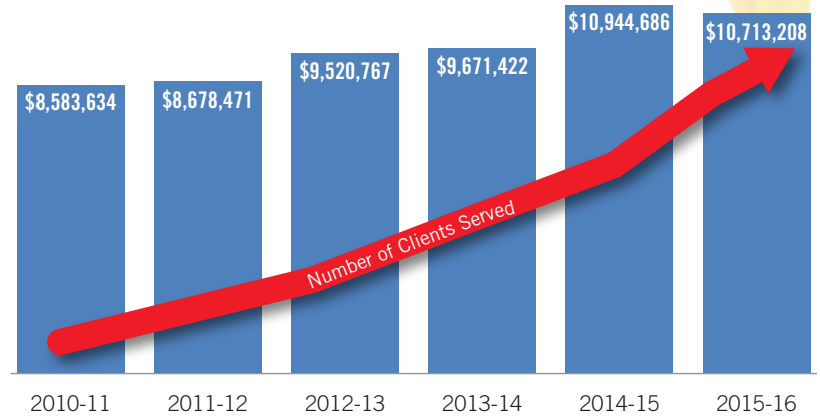
Training and Jobs

TMHA vocational programs provide real-world job training and meaningful employment.

Growing Grounds Program Placement	Mental Health Client Totals
Farm & Wholesale Nursery, San Luis Obispo	66 Employed
Growing Grounds Farm, Santa Maria	57 Employed
Growing Grounds Downtown Store, San Luis Obispo	20 Job-Skills Training Participants, 6 Job Placements
Growing Grounds Gallery & Gifts, Santa Maria	5 Employed
Supported Employment Program	63 Total Hired in Jobs

In TMHA's 2015 Consumer Satisfaction Survey, 23% of all respondents reported that they were currently employed, an impressive 7% above the national employment rate for people with chronic mental illness.

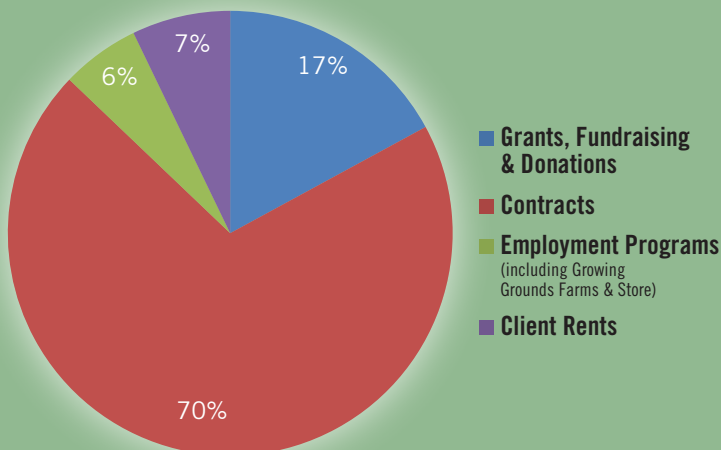
Total Operating Budget



Transitions-Mental Health Association is committed to programs that truly support mental health recovery and wellness. In a time of greater focus on the needs of those with mental health conditions, private contributions and fundraising revenue are vital to maintain and grow our quality programs to meet the need in our communities. **Every single donation makes a difference in the lives of our program participants.**

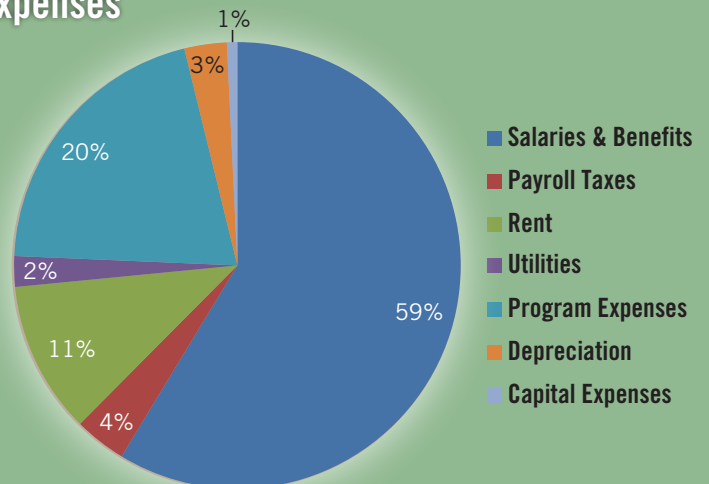
To make your contribution, please visit www.t-mha.org.

Revenue



Total Revenue \$11,257,122

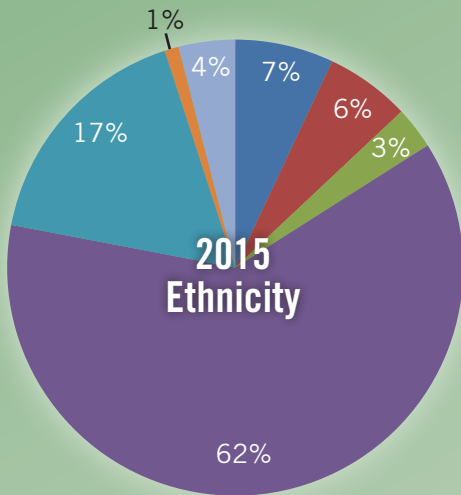
Expenses



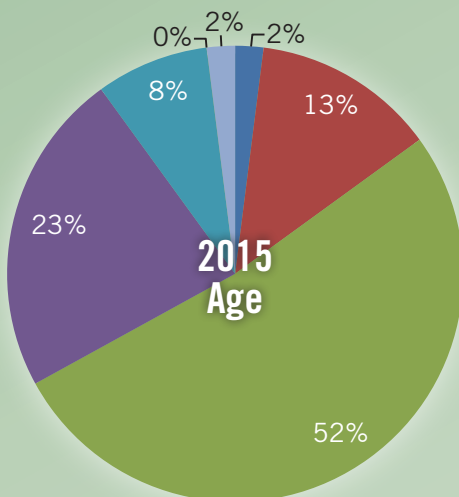
Total Expenses \$11,257,122

Yearly revenue in excess of costs is placed in a prudent reserve fund and managed by the Board of Directors, stabilizing mental health service provision during financially leaner years or seed funding for future projects.

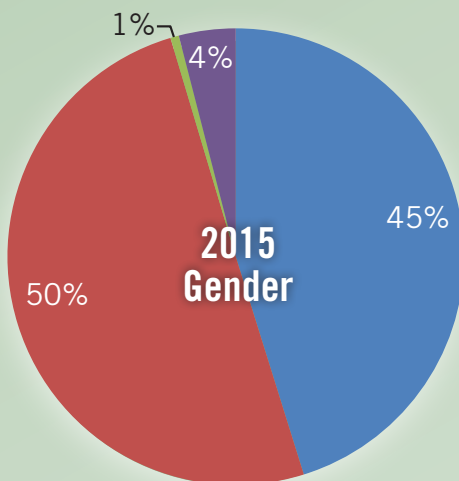
2015 TMHA Client Demographics



- African American
- American Indian/Alaskan Native
- Asian
- Caucasian
- Hispanic
- Native Hawaiian/Pacific Islander
- Other



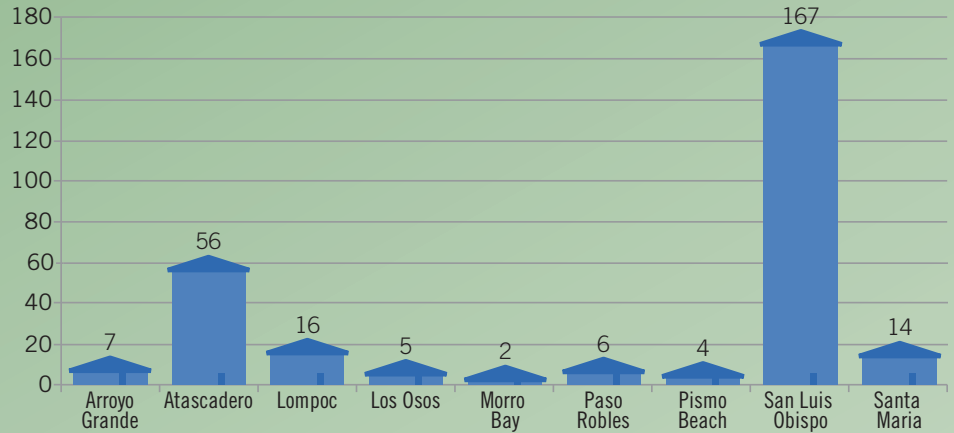
- 71+
- 60-70
- 41-59
- 26-40
- 18-25
- 11-17
- No Reply



- Female
- Male
- Transgender
- No Reply

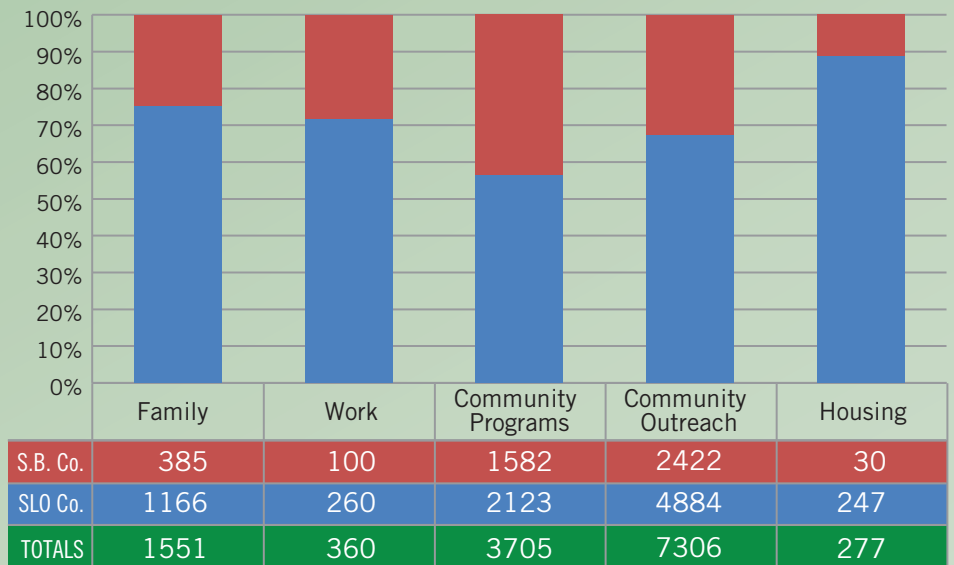
TMHA Housing

■ 277 people housed in 2014-2015



13,199 Clients Served

Please note that numbers are adjusted for program overlap



The **Community Programs** column represents our Wellness Centers/Recovery Learning Communities, and intensive services such as Lompoc ACT, Santa Maria Supportive Services, the Homeless Outreach Team and the Behavioral Health Treatment Court Team. The **Community Outreach** column represents TMHA mental health education and stigma elimination contacts in the community.

Suicide Statistics/Rate

County	2013 Suicides	Suicides per 100,000*
San Luis Obispo	46	16.8
Santa Barbara	44	10.1
Statewide Totals		
California	3,990	10.3

*2015 Population Projections, California Department of Finance

SLO   

HOTLINE

(800) 783-0607

== MAKE THE CALL. ANY TIME. ==

SLO HOTLINE received **8,509 calls** for suicide prevention, mental health support and referrals: 2,797 of the total calls involved suicidal content and 184 callers identified as being homeless.