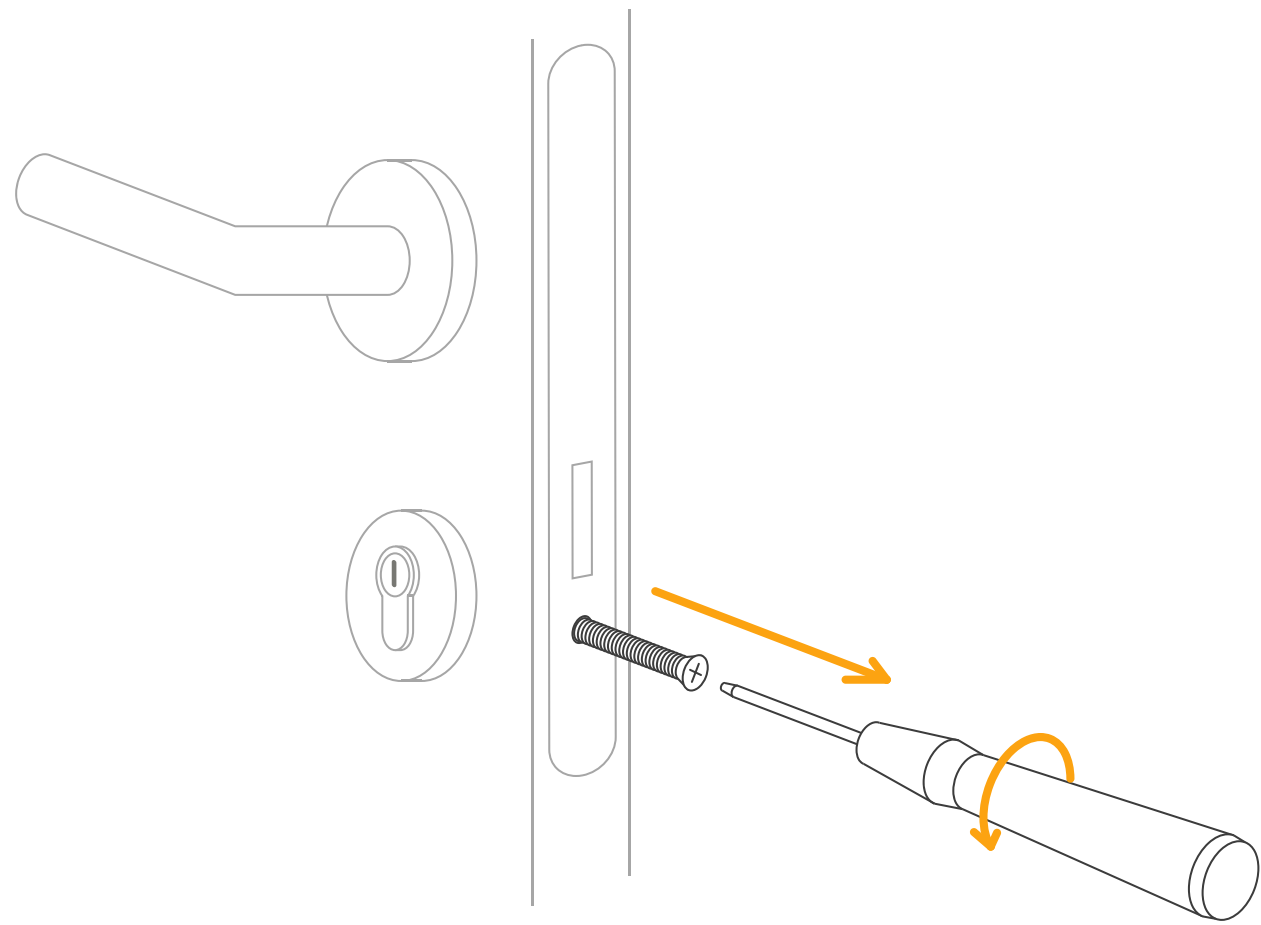


# tapkey SMART LOCK

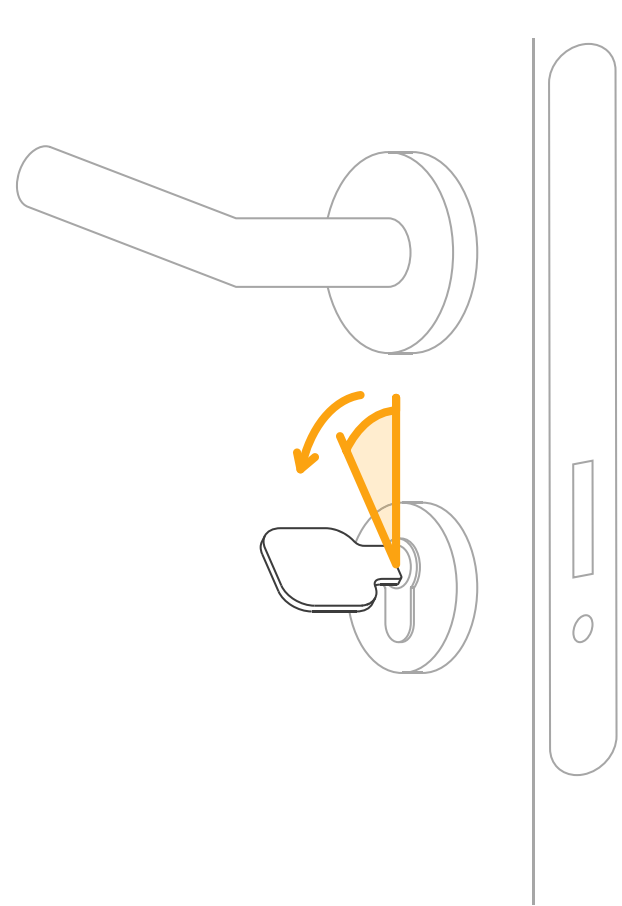
## CONFIGURATION GUIDE

- 1 Remove cylinder
- 2 Measure cylinder
- 3 Determine core pulling protection

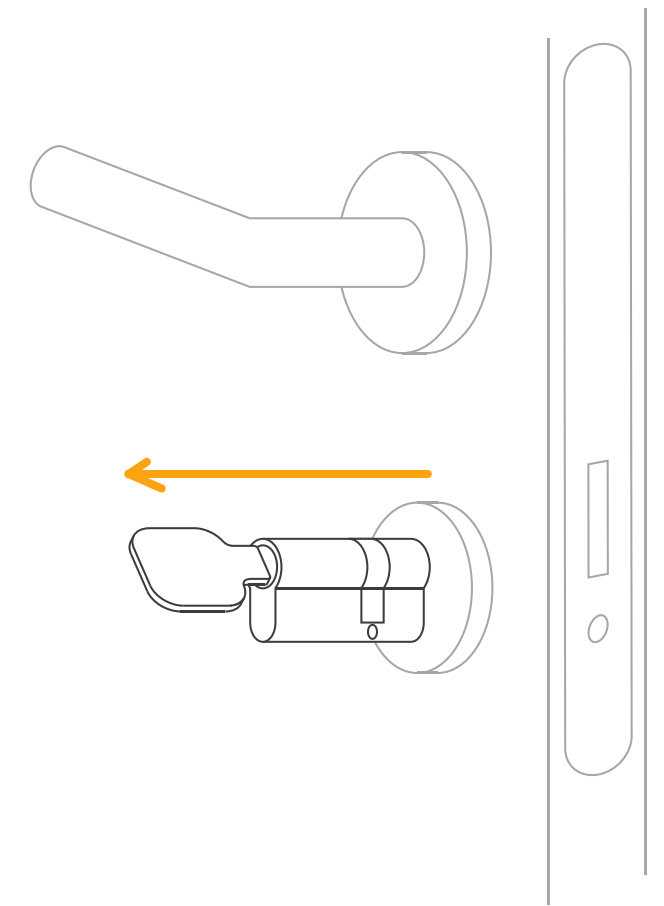
# 1 REMOVE CYLINDER



1. Remove screw

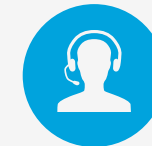
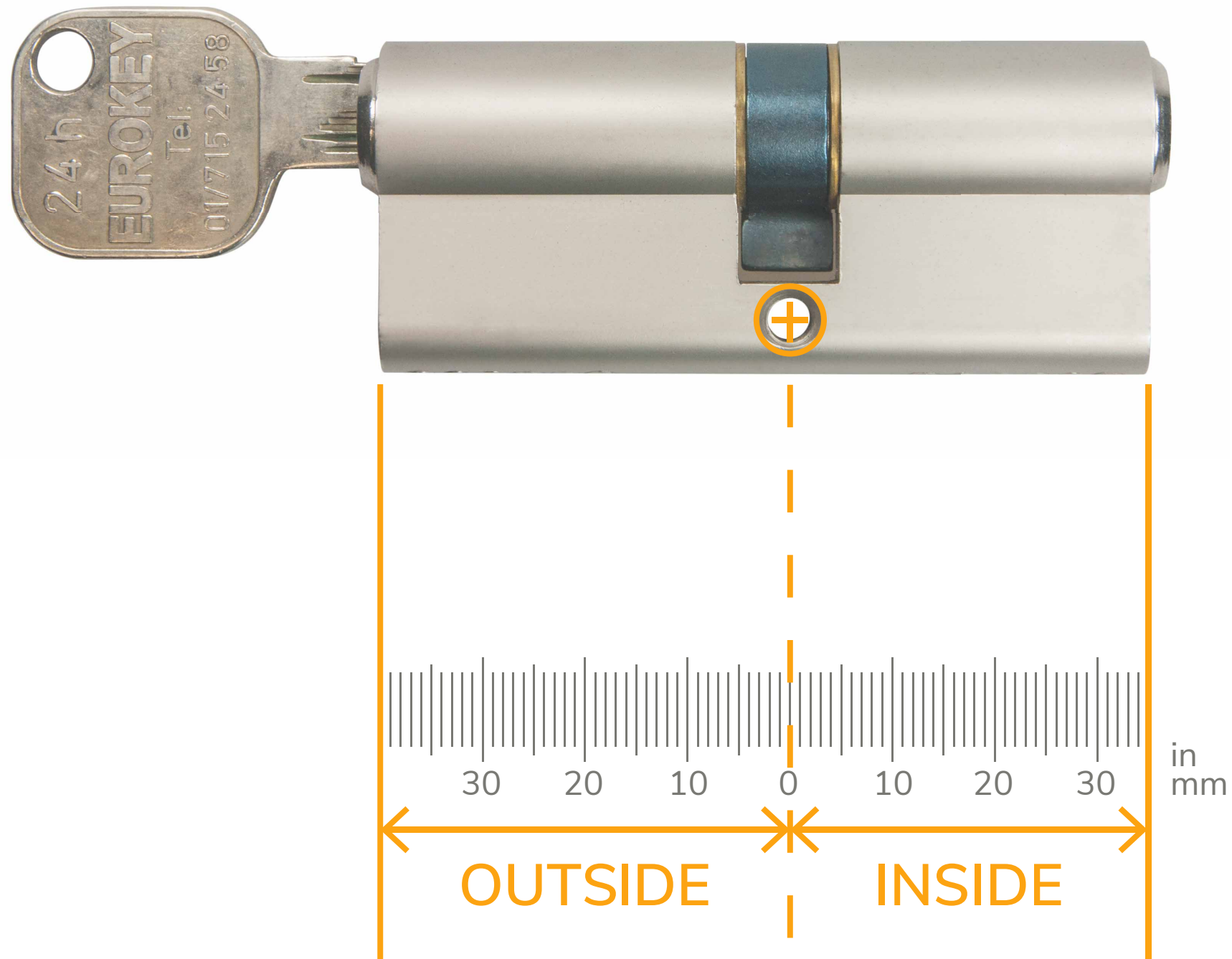


2. Slightly rotate key



3. Pull out cylinder

## 2 MEASURE CYLINDER



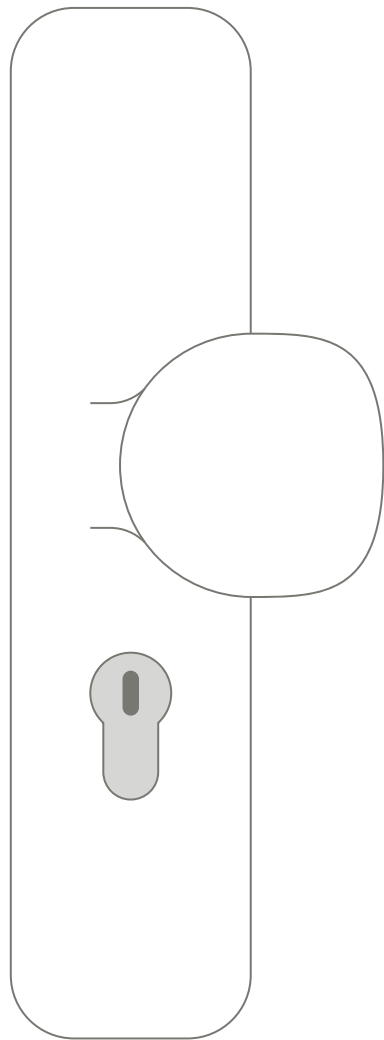
**You need assistance?**

Just send a photo of your cylinder and door to

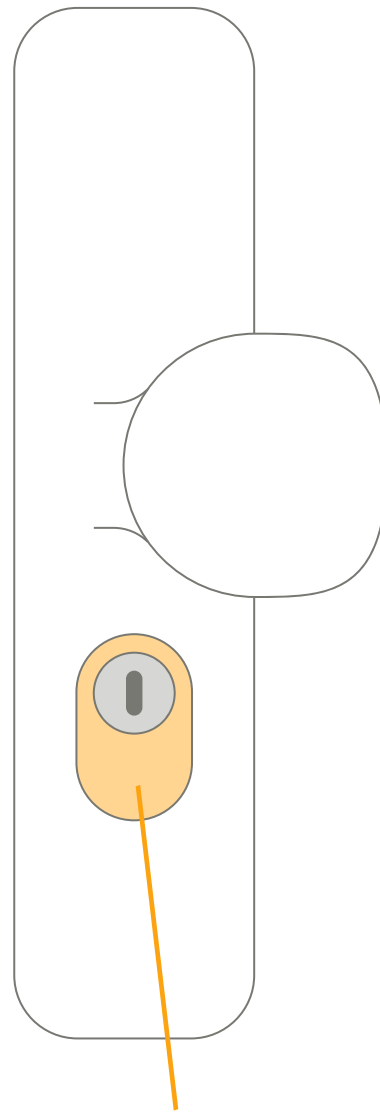
[support@tapkey.com](mailto:support@tapkey.com)

### 3 DETERMINE CORE PULLING PROTECTION

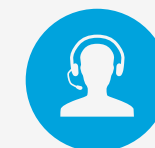
In special cases your smart lock needs core pulling protection:



without core pulling protection



core pulling protection



**You need assistance?**

You are not sure if you need core pulling protection?

Then contact us under

[support@tapkey.com](mailto:support@tapkey.com)