

Beispiel 1

Beispiel 2

● = Sticks ▲ = Rechte Hand auf Fell ▼ = Rechte Hand kurz auf Fell

Beispiel 3

Clave Bossa Nova

Beispiel 4

Clave Bossa Nova mit Hihat

Beispiel 5

Bass Drum als Surdo

● = Linke Hand Sticks ▲ = Rechte Hand auf Fell ▼ = Rechte Hand kurz auf Fell

Beispiel 6

Kompletter Bossa Nova

Beispiel 7

Bossa Nova Snare / Cross-Stick Variationen

Basic-Pattern:

Variationen:

Beispiel 8

Agogo Bell Pattern

Beispiel 9

Agogo Bell Pattern für Drumset

Beispiel 10

Hi-Hat Variation

Musical notation for Beispiel 10: Hi-Hat Variation. The notation is on a single staff in 4/4 time. It features a repeating pattern of eighth notes on the hi-hat, marked with 'x' and accented with a downward-pointing triangle. The pattern is: x x x x | x x x x | x x x x | x x x x.

Beispiel 11

Bossa Nova mit Hi-Hat Variation

Musical notation for Beispiel 11: Bossa Nova mit Hi-Hat Variation. The notation is on two staves in 4/4 time. The top staff features a hi-hat variation pattern with eighth notes marked with 'x' and accented with a downward-pointing triangle. The bottom staff features a bass line pattern with quarter notes and eighth notes.

Beispiel 12

Bossa Nova mit Hi-Hat Variation

Musical notation for Beispiel 12: Bossa Nova mit Hi-Hat Variation. The notation is on two staves in 4/4 time. The top staff features a hi-hat variation pattern with eighth notes marked with 'x' and accented with a downward-pointing triangle. The bottom staff features a bass line pattern with quarter notes and eighth notes.

Beispiel 13

Hi-Hat Variation 2

Musical notation for Beispiel 13: Hi-Hat Variation 2. The notation is on a single staff in 4/4 time. It features a repeating pattern of eighth notes on the hi-hat, marked with 'x' and accented with a downward-pointing triangle. The pattern is: x x x x | x x x x | x x x x | x x x x.

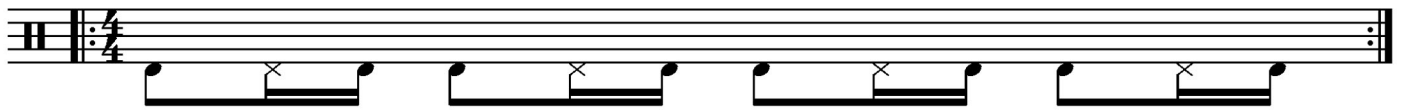
Beispiel 14

Hi-Hat Variation 2 mit Cowbell Pattern

Musical notation for Beispiel 14: Hi-Hat Variation 2 mit Cowbell Pattern. The notation is on two staves in 4/4 time. The top staff features a hi-hat variation pattern with eighth notes marked with 'x' and accented with a downward-pointing triangle, interspersed with cowbell patterns marked with 'o'. The bottom staff features a bass line pattern with quarter notes and eighth notes.

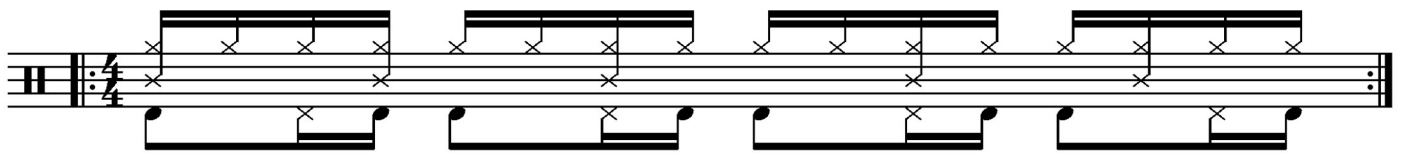
Beispiel 15

Hi-Hat und Bass Drum Pattern



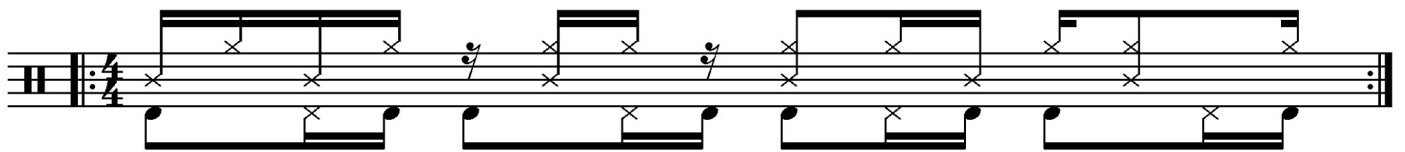
Beispiel 16

Komplett Bossa Nova mit Becken Pattern



Beispiel 17

Meine Lieblings Variation mit Cymbal oder Cowbell für Bossa Nova!



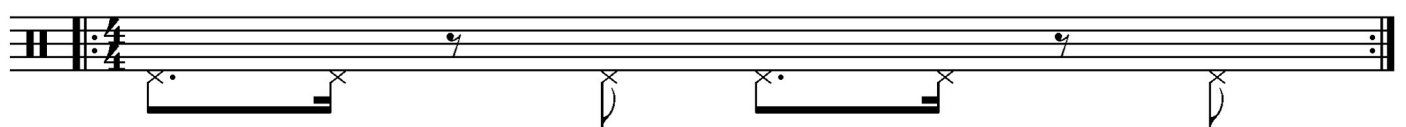
Beispiel 18

Variation Rechte Hand



Beispiel 19

Hi-Hat Variation



# Beispiel 20

## Hi-Hat Variation mit Bass Drum

- + Variations-Impro Rechte Hand
- + Linke Hand

