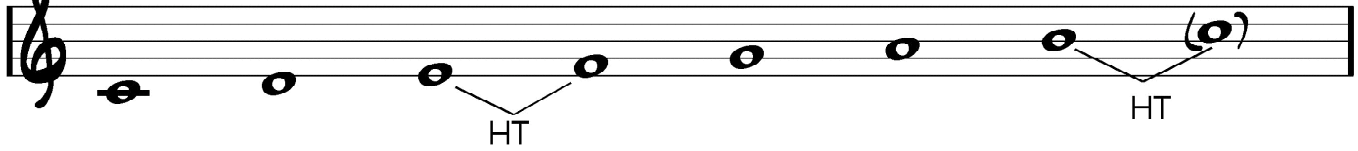
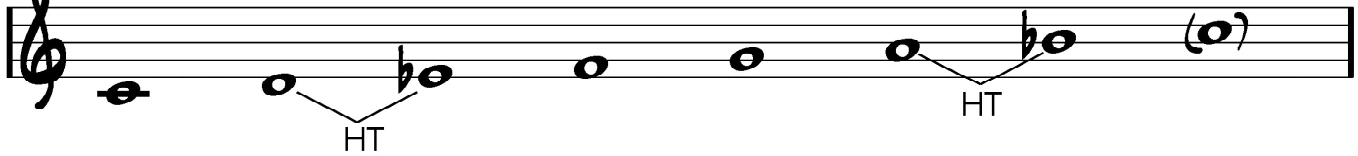


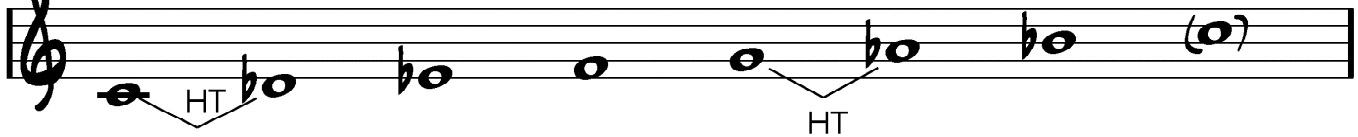
1. Modus:C ionisch / 0-Vorzeichen-Bereich (C-Dur)



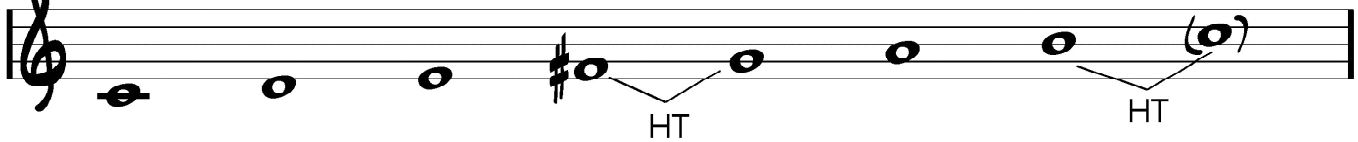
2. Modus:C dorisch / 2b - Bereich (B-Dur)



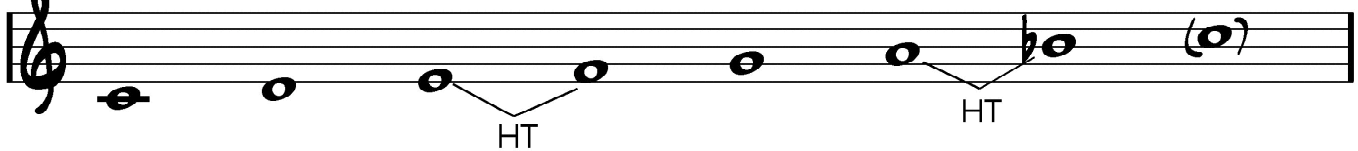
3. Modus:C phrygisch / 4b - Bereich (Ab-Dur)



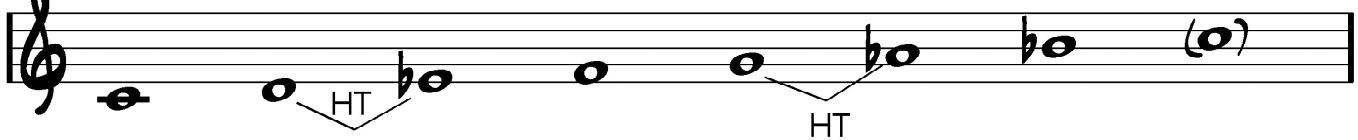
4. Modus:C lydisch / 1# - Bereich (G-Dur)



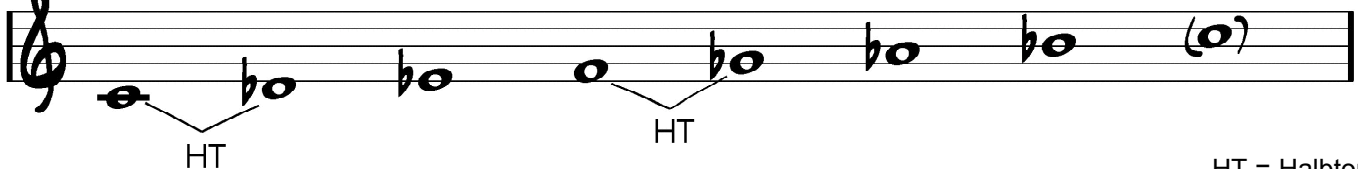
5. Modus:C mixolydisch / 1b - Bereich (F-Dur)



6. Modus:C aeolisch / 3b - Bereich (Eb-Dur)



7. Modus:C lokrisch / 5b - Bereich (Db-Dur)



HT = Halbton