

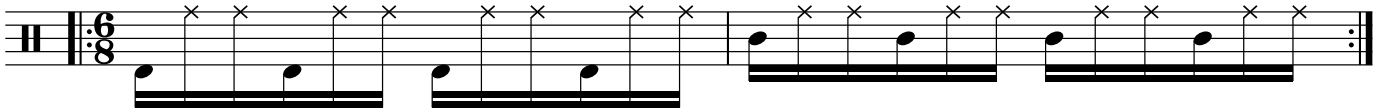
Percussion Workshop - Besen

A musical staff with five lines. On the left, there is a double bar line. Below the staff, there are three labels: "Bass (Kick)", "Tak (Snare)", and "Tap (Hihat)". Above the staff, there are three notes: a quarter note on the second line, a quarter note on the third line, and a quarter note on the fourth line with an 'x' above it.

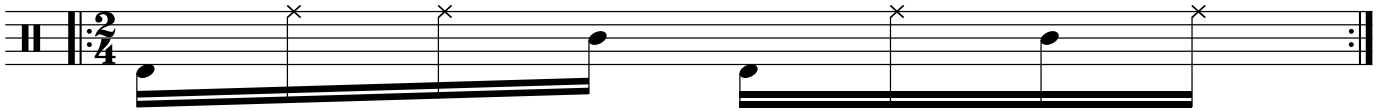
Übung 1



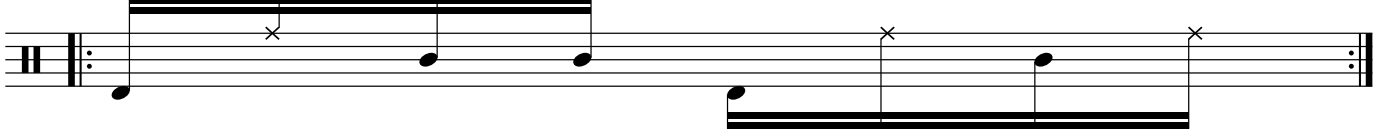
Übung 2



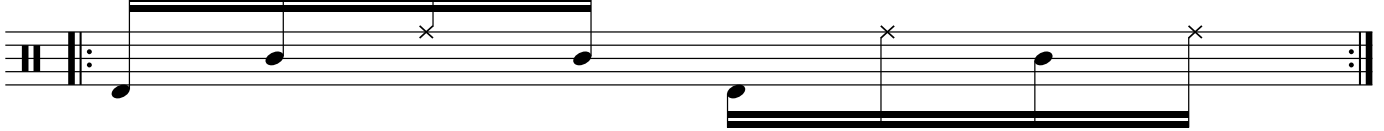
Ayoub 1



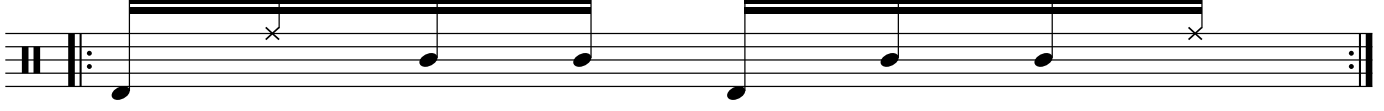
Ayoub 2



Ayoub 3



Ayoub 4



Hiphop 1 - Swing Feel

Musical notation for Hiphop 1 - Swing Feel. The piece is in 4/4 time and consists of a single staff. It begins with a double bar line and a repeat sign. The melody is composed of quarter and eighth notes, with 'x' marks above the notes indicating specific rhythmic accents. The piece concludes with a double bar line and repeat dots.

Hiphop 2 - Swing Feel

Musical notation for Hiphop 2 - Swing Feel. The piece is in 4/4 time and consists of a single staff. It begins with a double bar line and a repeat sign. The melody features a mix of quarter, eighth, and sixteenth notes, with 'x' marks above the notes indicating rhythmic accents. The piece concludes with a double bar line and repeat dots.

Djembe Groove 1

Musical notation for Djembe Groove 1. The piece is in 4/4 time and consists of a single staff. It begins with a double bar line and a repeat sign. The melody is primarily composed of quarter notes with 'x' marks above them, indicating rhythmic accents. The piece concludes with a double bar line and repeat dots.

Djembe Groove 2 (Belledi Variation)

Musical notation for Djembe Groove 2 (Belledi Variation). The piece is in 4/4 time and consists of a single staff. It begins with a double bar line and a repeat sign. The melody includes quarter, eighth, and sixteenth notes, with 'x' marks above the notes indicating rhythmic accents. A fermata is placed over a note in the fourth measure. The piece concludes with a double bar line and repeat dots.

Djembe Groove 3 (Chiftetelli Variation)

Musical notation for Djembe Groove 3 (Chiftetelli Variation). The piece is in 4/4 time and consists of a single staff. It begins with a double bar line and a repeat sign. The melody features quarter and eighth notes, with 'x' marks above the notes indicating rhythmic accents. Fermatas are placed over notes in the second and fourth measures. The piece concludes with a double bar line and repeat dots.