

# Drum Play-Alike – „Nevermind“ (Nirvana)

von Jonas Böker für bonedo.de

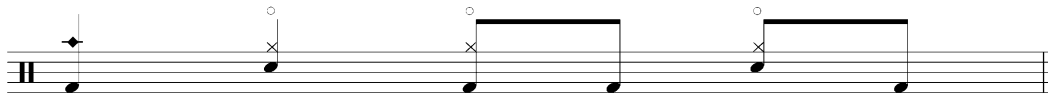
## Smells Like Teen Spirit – Intro Fill-In (118 BPM)



## Smells Like Teen Spirit – Hauptriff / Chorus (118 BPM)



## Smells Like Teen Spirit – Hauptriff / Chorus (nur Achtel Ebene) (118 BPM)



## Smells Like Teen Spirit – Strophe (116 BPM)



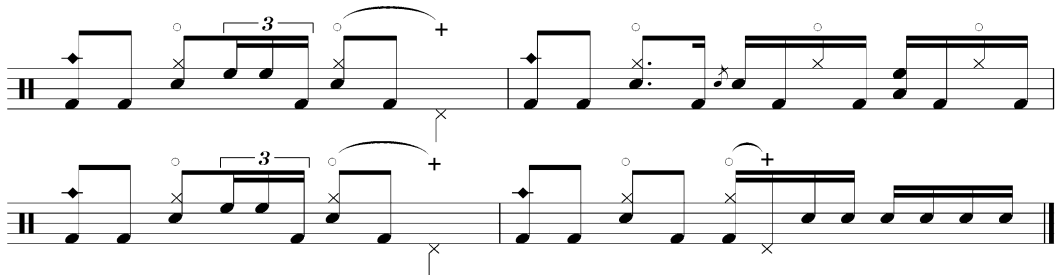
## Smells Like Teen Spirit – Fill-In zum Chorus (118 BPM)



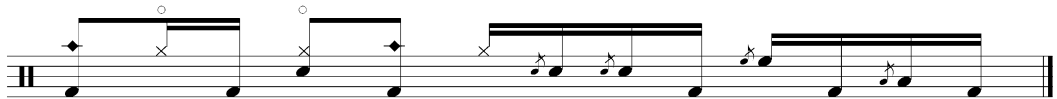
Smells Like Teen Spirit – Chorus Steigerung (118 BPM)



Smells Like Teen Spirit – Break (118 BPM)



In Bloom – Hauptriff (73 BPM)



In Bloom – Strophe Einleitung (73 BPM)



In Bloom – Strophe (73 BPM)



In Bloom – Chorus (73 BPM)

Musical notation for the chorus of 'In Bloom' at 73 BPM. It consists of two staves. The first staff features a complex rhythmic pattern with many sixteenth notes and rests, ending with a measure containing a '4' above it. The second staff continues the pattern with triplets and other rhythmic figures.

Come As You Are – Strophe (120 BPM)

Musical notation for the verse of 'Come As You Are' at 120 BPM. It is a single staff with a simple rhythmic pattern of eighth notes and rests.

Come As You Are – erster Pre-Chorus (120 BPM)

Musical notation for the first pre-chorus of 'Come As You Are' at 120 BPM. It consists of two staves. The first staff has a rhythmic pattern with accents and ends with a measure containing a '2' above it. The second staff continues the pattern with similar rhythmic figures.

Come As You Are – zweiter Pre-Chorus (Ausschnitt) (120 BPM)

Musical notation for the second pre-chorus of 'Come As You Are' at 120 BPM. It is a single staff with a rhythmic pattern similar to the first pre-chorus, featuring accents and eighth notes.

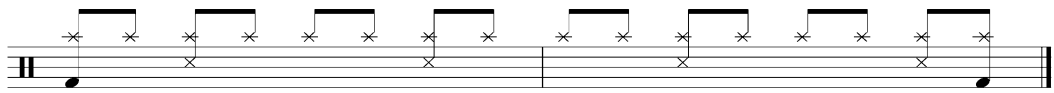
Come As You Are – Chorus (120 BPM)

Musical notation for the chorus of 'Come As You Are' at 120 BPM. It is a single staff with a rhythmic pattern of eighth notes and rests, similar to the verse.

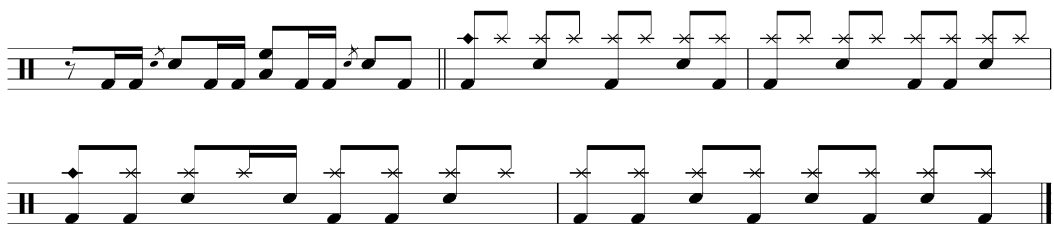
### Come As You Are – Bridge (120 BPM)



### Lithium – Strophe (123 BPM)



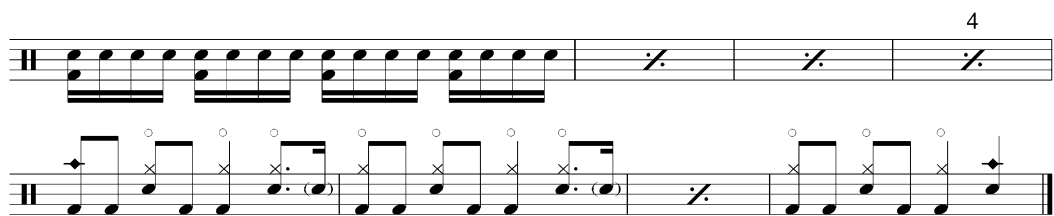
### Lithium – Pre-Chorus (123 BPM)



### Lithium – Chorus (123 BPM)



### Breed – Intro (159 BPM)



Breed – Chorus (158 BPM)

Musical notation for the chorus of 'Breed' at 158 BPM. It consists of two staves. The top staff features a complex rhythmic pattern with many sixteenth notes and rests, including some notes with 'x' marks. The bottom staff starts with a double bar line and a '2' above it, followed by a series of eighth notes and chords.

Stay Away – Intro (165 BPM)

Musical notation for the intro of 'Stay Away' at 165 BPM. It consists of two staves. The top staff has a series of chords with accents (>) and some rests. The bottom staff has a series of eighth notes with 'x' marks and some notes with circles (o) above them, ending with a double bar line and a '2' above it.

Stay Away – Strophe (165 BPM)

Musical notation for the strophe of 'Stay Away' at 165 BPM. It consists of a single staff with a series of chords and eighth notes.