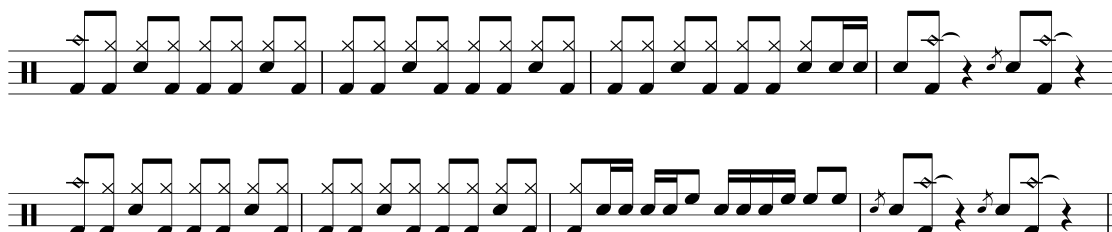


# Drum Play-alike Workshop: Stewart Copeland

- von Jonas Böker für bonedo.de -

## 1. Straight (Punk) Rock Grooves

„So Lonely“ Refrain Groove – 160 bpm



„Roxanne“ Refrain Groove – 138 bpm

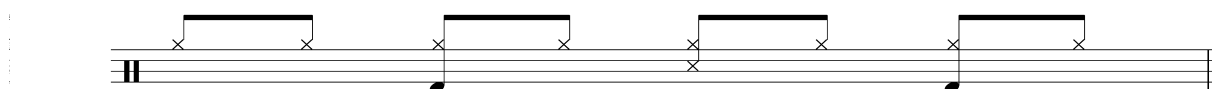


„Message In A Bottle“ Pre-Chorus Hi-Hat Groove – 150 bpm

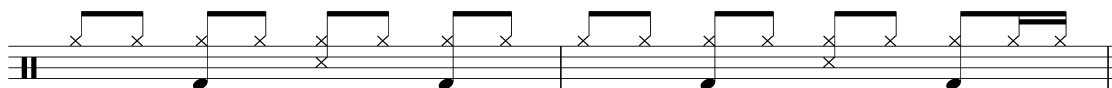


## 2. Reggae Grooves

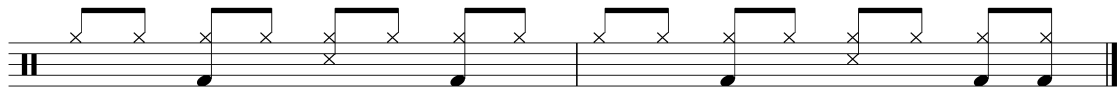
„Walking On The Moon“ Vers Groove – 144 bpm



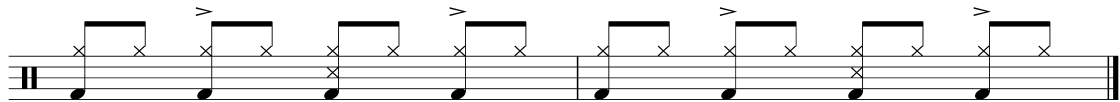
„Walking On The Moon“ Vers Groove – Variation 1



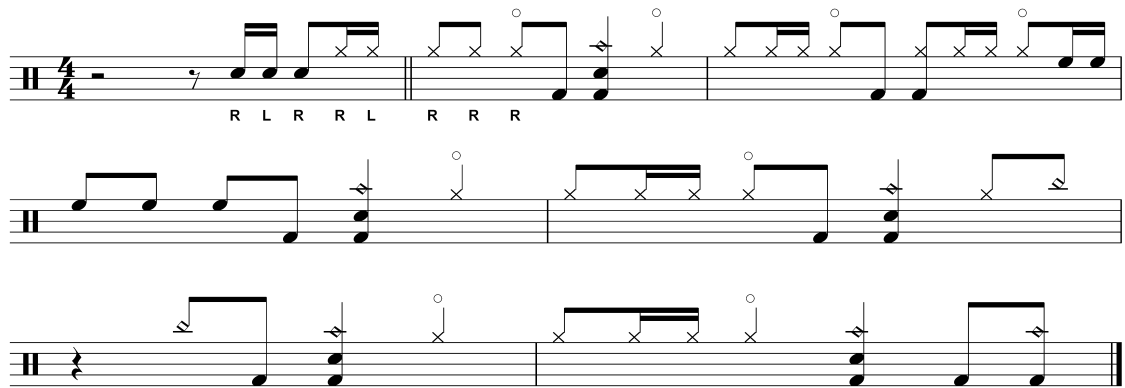
„Walking On The Moon“ Vers Groove – Variation 2



„Walking On The Moon“ Refrain Groove – 144 bpm



„Driven To Tears“ Refrain Groove – 157 bpm



**3. Copeland Signature Grooves**

„Roxanne“ Vers Groove – 134 bpm



„Roxanne“ Pre-Chorus Groove - 134 bpm

Musical notation for the Pre-Chorus Groove of 'Roxanne' at 134 bpm. It consists of four staves. The first staff is in 4/4 time and begins with a rest followed by a quarter note with an accent (>) and a cross (x). The subsequent staves show a rhythmic pattern of eighth notes with accents and crosses, and quarter notes with accents. The fourth staff includes a half note with a cross and a plus sign (+), and a quarter note with a cross and a plus sign.

„Message In A Bottle“ Vers Groove – 150 bpm

Musical notation for the Vers Groove of 'Message In A Bottle' at 150 bpm. It consists of a single staff with a rhythmic pattern of eighth notes with crosses and quarter notes with accents.

„Can't Stand Losing You“ Vers Groove – 138 bpm

Musical notation for the Vers Groove of 'Can't Stand Losing You' at 138 bpm. It consists of two staves. The first staff is in 4/4 time and begins with a rest followed by a quarter note with an accent (>) and a cross (x). The subsequent staves show a rhythmic pattern of eighth notes with crosses and quarter notes with accents.

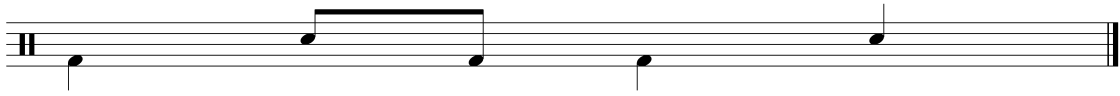
„Regatta de Blanc“ Ride Groove – 144 bpm

Musical notation for the Ride Groove of 'Regatta de Blanc' at 144 bpm. It consists of a single staff with a rhythmic pattern of eighth notes with crosses and quarter notes with accents.



## 6. Der Song ist Chef

„Every Breath You Take“ - Groove 1 – 119 bpm



„Every Breath You Take“ - Groove 2 – 119 bpm

