

# Workshop: Shuffle Grooves

von Jonas Böker für bonedo.de

## Shuffle-Pattern

Musical notation for a shuffle pattern on a single staff. It consists of four groups of three eighth notes, each marked with a '3' above a bracket. The notes are positioned on the first, second, and third lines of the staff. A '7' is written below the first note of each group, indicating a fretting position. The pattern is repeated four times across the staff.

## Good Rockin' Tonight (Roy Brown)

Musical notation for a shuffle pattern on a single staff. It consists of four groups of three eighth notes, each marked with a '3' above a bracket. The notes are positioned on the first, second, and third lines of the staff. A '7' is written below the first note of each group, indicating a fretting position. The pattern is repeated four times across the staff.

## Home At Last (Steely Dan)

Musical notation for a shuffle pattern on a single staff. It consists of four groups of three eighth notes, each marked with a '3' above a bracket. The notes are positioned on the first, second, and third lines of the staff. A '7' is written below the first note of each group, indicating a fretting position. The pattern is repeated four times across the staff.

## Green Onions (Booker T. & the M. G.'s)

Musical notation for a shuffle pattern on a single staff. It consists of four groups of three eighth notes, each marked with a '3' above a bracket. The notes are positioned on the first, second, and third lines of the staff. A '7' is written below the first note of each group, indicating a fretting position. The pattern is repeated four times across the staff.

Black Night (Deep Purple)

Musical notation for the guitar part of "Black Night" by Deep Purple. It consists of two staves. The first staff contains eight measures of music, each featuring a triplet of eighth notes on the 7th fret. The second staff contains eight measures of music, each featuring a triplet of eighth notes on the 7th fret. The notation includes a double bar line at the end of each staff.

Higher Ground (Stevie Wonder)

Musical notation for the guitar part of "Higher Ground" by Stevie Wonder. It consists of a single staff with four measures of music. Each measure features a triplet of eighth notes on the 7th fret. The notation includes a double bar line at the end of the staff.

Freeway Jam (Jeff Beck)

Musical notation for the guitar part of "Freeway Jam" by Jeff Beck. It consists of a single staff with four measures of music. Each measure features a triplet of eighth notes on the 7th fret. The notation includes a double bar line at the end of the staff.

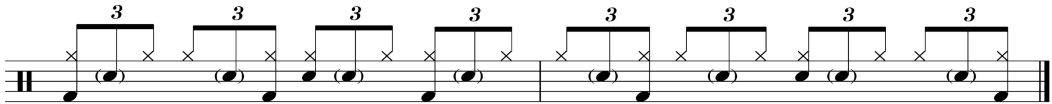
Don't Stop (Fleetwood Mac)

Musical notation for the guitar part of "Don't Stop" by Fleetwood Mac. It consists of a single staff with four measures of music. Each measure features a triplet of eighth notes on the 7th fret. The notation includes a double bar line at the end of the staff.

Fool in the Rain (Led Zeppelin)

Musical notation for the guitar part of "Fool in the Rain" by Led Zeppelin. It consists of a single staff with four measures of music. The first measure features a triplet of eighth notes on the 7th fret with a grace note on the 7th fret. The second measure features a triplet of eighth notes on the 7th fret. The third and fourth measures each feature a triplet of eighth notes on the 7th fret. The notation includes a double bar line at the end of the staff.

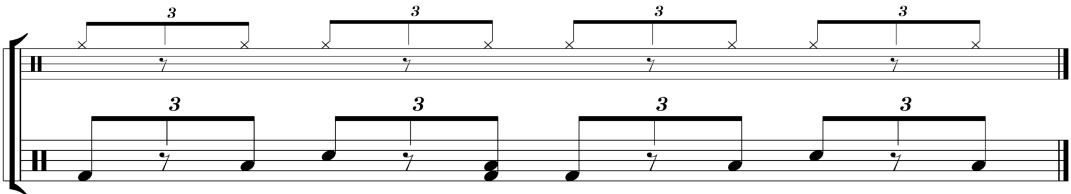
Rosanna (Toto)



Pride And Joy (Stevie Ray Vaughan)



I Kissed A Girl (Katy Perry)



Chicken Grease (D'Angelo)

