



**Officials:** Michael Reed, Michael Irving, Nate Harris

**Colorado St. - 61**

**Record: 24-10**

NO.	Name	F	Min	FG			3P			FT			Rebounds			Fouls		TP	AS	TO	ST	Blocks		+/-
				M-A	M-A	M-A	OR	DR	TOT	PF	FD	BS	BA											
1	Joel Scott	F	30:55	9-16	1-3	1-1	4	4	8	0	5	20	1	1	1	2	2	-7						
12	Patrick Cartier	F	24:56	2-5	0-1	3-3	1	3	4	0	3	7	2	2	0	0	2	-10						
3	Josiah Strong	G	17:40	0-6	0-3	0-0	1	1	2	1	0	0	0	0	1	0	1	-19						
4	Isaiah Stevens	G	36:09	5-13	1-5	2-2	0	3	3	3	1	13	2	5	0	0	0	-16						
10	Nique Clifford	G	25:52	2-10	1-4	1-2	3	6	9	4	2	6	7	3	1	0	1	-1						
15	Jalen Lake		28:21	1-6	0-5	0-0	0	0	0	3	0	2	1	0	2	0	0	-2						
20	Joe Palmer		17:48	3-7	2-4	0-0	2	3	5	3	1	8	1	0	0	0	1	-6						
2	Taviontae Jackson		08:49	1-4	0-1	0-0	1	2	3	2	0	2	0	1	0	0	1	-4						
21	Rashaan Mbemba		06:21	0-1	0-0	0-0	0	0	0	1	0	0	0	1	1	1	1	-3						
0	Kyan Evans		03:09	1-2	1-2	0-0	0	0	0	0	0	3	0	0	0	0	0	3						
Team							7	3	10			0		1										
<b>Totals</b>				24-70	6-28	7-8	19	25	44	17	12	61	14	14	6	3	9	-13						

Shooting By Period		
1 <sup>st</sup> FG%	9-33	27.3%
3PT%	3-14	21.4%
FT%	4-4	100%
2 <sup>nd</sup> FG%	15-37	40.5%
3PT%	3-14	21.4%
FT%	3-4	75%
GM FG%	24-70	34.3%
3PT%	6-28	21.4%
FT%	7-8	87.5%

Dead Ball Rebounds: 1, 0

**Technical Fouls::NONE**

**New Mexico - 74**

**Record: 25-9**

NO.	Name	F	Min	FG			3P			FT			Rebounds			Fouls		TP	AS	TO	ST	Blocks		+/-
				M-A	M-A	M-A	OR	DR	TOT	PF	FD	BS	BA											
15	JT Toppin	F	28:58	8-12	0-0	0-0	4	5	9	0	1	16	0	0	0	3	1	16						
23	Nelly Joseph	F	29:10	4-8	0-0	1-2	5	7	12	2	3	9	0	3	0	2	0	15						
2	Donovan Dent	G	26:09	3-7	0-0	1-2	0	1	1	2	2	7	6	4	2	1	1	11						
5	Jamal Mashburn, Jr.	G	30:29	3-11	0-2	1-2	1	2	3	2	3	7	0	0	0	0	0	6						
10	Jaelen House	G	33:56	5-12	1-3	8-8	0	5	5	3	6	19	8	0	2	0	1	19						
0	Jemarl Baker Jr.		22:41	2-6	2-5	0-0	0	4	4	2	0	6	0	0	0	0	0	7						
22	Mustapha Amzil		21:52	3-4	2-2	2-2	1	1	2	1	2	10	1	0	2	3	0	-5						
3	Tru Washington		06:45	0-2	0-1	0-0	0	0	0	1	0	0	1	0	0	0	0	-4						
Team							1	2	3			0		2										
<b>Totals</b>				28-62	5-13	13-16	12	27	39	13	17	74	16	9	6	9	3	13						

Shooting By Period		
1 <sup>st</sup> FG%	14-29	48.3%
3PT%	2-6	33.3%
FT%	3-4	75%
2 <sup>nd</sup> FG%	14-33	42.4%
3PT%	3-7	42.9%
FT%	10-12	83.3%
GM FG%	28-62	45.2%
3PT%	5-13	38.5%
FT%	13-16	81.3%

Dead Ball Rebounds: 0, 0

**Technical Fouls:Dent 1<sup>st</sup>10:17**

	CSU	UNM
<b>Biggest lead</b>	0 (1 <sup>st</sup> 20:00)	16 (2 <sup>nd</sup> 9:06)
<b>Best Scoring Run</b>	6(1 <sup>st</sup> 13:41)	11(1 <sup>st</sup> 16:15)
<b>Lead Changes</b>	0	
<b>Times Tied</b>	2	
<b>Time with Lead</b>	00:00	38:23

	CSU	UNM
<b>Points from</b>		
<b>Turnovers</b>	6	22
<b>Paint</b>	30	42
<b>Second Chance</b>	15	7
<b>Fast Breaks</b>	5	11
<b>Bench</b>	15	16

	Period by Period Scoring		
	1st	2nd	TOT
<b>CSU</b>	25	36	61
<b>UNM</b>	33	41	74



**Period 1**

**Quarter Starters:**

<b>UNM</b>	2 Dent D	5 Mashburn, Jr. J	10 House J	15 Toppin J	23 Joseph N
<b>CSU</b>	1 Scott J	3 Strong J	4 Stevens I	10 Clifford N	12 Cartier P

Game Time	UNM	Score	Diff	CSU
20:00	15 TOPPIN J jumpball won			12 CARTIER P jumpball lost
19:44	23 JOSEPH N 2pt FG in the paint, layup made (2)	<b>2-0</b>	<b>2</b>	
19:44	10 HOUSE J assist (1)			
19:23				4 STEVENS I turnover bad pass (1)
19:00	23 JOSEPH N turnover bad pass (1)			10 CLIFFORD N steal (1)
18:30				10 CLIFFORD N 2pt FG from turnover outside the paint, jump shot blocked
18:30	2 DENT D block (1)			
18:30				offensive dead ball rebound (1)
18:30				turnover shot clock (2)
18:20	10 HOUSE J 3pt FG from turnover, jump shot made (3)	<b>5-0</b>	<b>5</b>	
18:09				4 STEVENS I 2pt FG outside the paint, jump shot missed
18:05	15 TOPPIN J defensive rebound (1)			
17:55	10 HOUSE J 2pt FG in the paint, jump shot made (5)	<b>7-0</b>	<b>7</b>	
17:44	2 DENT D steal (1)			10 CLIFFORD N turnover bad pass (1)
17:40	2 DENT D 2pt FG fast break from turnover in the paint, layup made (2)	<b>9-0</b>	<b>9</b>	
17:38				Timeout 30 Sec
17:21				12 CARTIER P 3pt FG , jump shot missed
17:17	10 HOUSE J defensive rebound (1)			
17:10	10 HOUSE J 2pt FG in the paint, jump shot missed			
17:08				1 SCOTT J defensive rebound (1)
17:06	10 HOUSE J foul personal (1 - 1)			1 SCOTT J foul drawn (1)
16:40				3 STRONG J 3pt FG , jump shot missed
16:37				12 CARTIER P offensive rebound (1)
16:30	23 JOSEPH N foul drawn (1)			4 STEVENS I foul offensive (1 - 1)
16:30				4 STEVENS I turnover offensive (2)
16:15	5 MASHBURN, JR. J 2pt FG from turnover outside the paint, jump shot made (2)	<b>11-0</b>	<b>11</b>	
16:04				10 CLIFFORD N 2pt FG in the paint, turnaround jump shot missed
16:01	5 MASHBURN, JR. J defensive rebound (1)			
15:52	5 MASHBURN, JR. J 2pt FG outside the paint, jump shot missed			
15:50				10 CLIFFORD N defensive rebound (1)
15:36				3 STRONG J 2pt FG in the paint, layup blocked
15:36	23 JOSEPH N block (1)			
15:35				offensive rebound (4)
15:35	Timeout media			
15:35				3 STRONG J substitution out
15:35				12 CARTIER P substitution out
15:35				15 LAKE J substitution in
15:35				20 PALMER J substitution in
15:32				10 CLIFFORD N 3pt FG second chance, jump shot missed
15:30				20 PALMER J offensive rebound (1)



**Colorado St. at New Mexico**

03/15/24 Thomas & Mack Center, Las Vegas  
2023-24 Men's Basketball

**Game Time:** 9:00 PM  
**Game Duration:** 1:59  
**Attendance:** 13,213

**Officials:** Michael Reed, Michael Irving, Nate Harris

Game Time	UNM	Score	Diff	CSU
15:25				4 STEVENS I 2pt FG second chance outside the paint, jump shot missed
15:23				20 PALMER J offensive rebound (2)
15:21		<b>11-3</b>	<b>8</b>	20 PALMER J 3pt FG second chance, jump shot made (3)
14:56	15 TOPPIN J 2pt FG in the paint, layup blocked			
14:56				1 SCOTT J block (1)
14:51	23 JOSEPH N offensive rebound (1)			
14:51	23 JOSEPH N 2pt FG second chance in the paint, layup made (4)	<b>13-3</b>	<b>10</b>	
14:33		<b>13-5</b>	<b>8</b>	1 SCOTT J 2pt FG in the paint, layup made (2)
14:33				10 CLIFFORD N assist (1)
14:33	23 JOSEPH N foul shooting (1 - 2)			1 SCOTT J foul drawn (2)
14:33	2 DENT D substitution out			
14:33	0 BAKER JR. J substitution in			
14:33		<b>13-6</b>	<b>7</b>	1 SCOTT J free throw 1 - 1 made (3)
14:02	0 BAKER JR. J 2pt FG outside the paint, jump shot missed			
14:00				20 PALMER J defensive rebound (3)
13:41		<b>13-9</b>	<b>4</b>	1 SCOTT J 3pt FG , jump shot made (6)
13:41				20 PALMER J assist (1)
13:12	10 HOUSE J 2pt FG in the paint, layup made (7)	<b>15-9</b>	<b>6</b>	
12:58				20 PALMER J 2pt FG in the paint, layup blocked
12:58	15 TOPPIN J block (1)			
12:56				offensive rebound (8)
12:56	15 TOPPIN J substitution out			
12:56	22 AMZIL M substitution in			
12:56				1 SCOTT J substitution out
12:56				10 CLIFFORD N substitution out
12:56				2 JACKSON T substitution in
12:56				21 MBEMBA R substitution in
12:54				20 PALMER J 2pt FG second chance in the paint, layup missed
12:52	22 AMZIL M defensive rebound (1)			
12:47	0 BAKER JR. J 3pt FG , jump shot missed			
12:44				4 STEVENS I defensive rebound (1)
12:43		<b>15-11</b>	<b>4</b>	2 JACKSON T 2pt FG fast break in the paint, layup made (2)
12:43				4 STEVENS I assist (1)
12:13	5 MASHBURN, JR. J 3pt FG , jump shot missed			
12:11				4 STEVENS I defensive rebound (2)
12:01				20 PALMER J 3pt FG , jump shot missed
11:58	23 JOSEPH N defensive rebound (2)			
11:40	23 JOSEPH N 2pt FG in the paint, layup made (6)	<b>17-11</b>	<b>6</b>	
11:40	10 HOUSE J assist (2)			
11:19				15 LAKE J 3pt FG , jump shot missed
11:16	10 HOUSE J defensive rebound (2)			
11:10	23 JOSEPH N 2pt FG in the paint, dunk, missed			
11:07				2 JACKSON T defensive rebound (1)
11:01				4 STEVENS I 2pt FG in the paint, layup missed
10:59	defensive rebound (8)			
10:59				Timeout media
10:59	5 MASHBURN, JR. J substitution out			
10:59	10 HOUSE J substitution out			



**Colorado St. at New Mexico**

03/15/24 Thomas & Mack Center, Las Vegas  
2023-24 Men's Basketball

**Game Time:** 9:00 PM  
**Game Duration:** 1:59  
**Attendance:** 13,213

**Officials:** Michael Reed, Michael Irving, Nate Harris

Game Time	UNM	Score	Diff	CSU
10:59	23 JOSEPH N substitution out			
10:59	2 DENT D substitution in			
10:59	3 WASHINGTON T substitution in			
10:59	15 TOPPIN J substitution in			
10:34	2 DENT D turnover bad pass (1)			21 MBEMBA R steal (1)
10:21				21 MBEMBA R substitution out
10:21				12 CARTIER P substitution in
10:17	2 DENT D foul personal (1 - 3)			12 CARTIER P foul drawn (1)
10:17	2 DENT D foul class A technical (2 - 4)			
10:17		<b>17-12</b>	<b>5</b>	4 STEVENS I free throw 1 - 2 made (1)
10:17		<b>17-13</b>	<b>4</b>	4 STEVENS I free throw 2 - 2 made (2)
10:17	2 DENT D substitution out			
10:17	10 HOUSE J substitution in			
10:09	jump ball situation			
09:56				4 STEVENS I 3pt FG , jump shot missed
09:54	10 HOUSE J defensive rebound (3)			
09:43	jump ball situation			
09:43				2 JACKSON T substitution out
09:43				10 CLIFFORD N substitution in
09:41	22 AMZIL M foul drawn (1)			20 PALMER J foul shooting (1 - 2)
09:41	22 AMZIL M free throw 1 - 2 made (1)	<b>18-13</b>	<b>5</b>	
09:41	22 AMZIL M free throw 2 - 2 made (2)	<b>19-13</b>	<b>6</b>	
09:25		<b>19-15</b>	<b>4</b>	12 CARTIER P 2pt FG in the paint, layup made (2)
09:25	3 WASHINGTON T foul shooting (1 - 5)			12 CARTIER P foul drawn (2)
09:25	0 BAKER JR. J substitution out			
09:25	5 MASHBURN, JR. J substitution in			
09:25				20 PALMER J substitution out
09:25				1 SCOTT J substitution in
09:25		<b>19-16</b>	<b>3</b>	12 CARTIER P free throw 1 - 1 made (3)
09:25				4 STEVENS I substitution out
09:25				0 EVANS K substitution in
09:14	15 TOPPIN J 2pt FG in the paint, layup made (2)	<b>21-16</b>	<b>5</b>	
09:14	3 WASHINGTON T assist (1)			
08:49		<b>21-19</b>	<b>2</b>	0 EVANS K 3pt FG , jump shot made (3)
08:49				10 CLIFFORD N assist (2)
08:32	22 AMZIL M 2pt FG in the paint, layup made (4)	<b>23-19</b>	<b>4</b>	
08:32	10 HOUSE J assist (3)			
08:15		<b>23-21</b>	<b>2</b>	1 SCOTT J 2pt FG in the paint, jump shot made (8)
07:53	3 WASHINGTON T 2pt FG outside the paint, jump shot missed			
07:49				12 CARTIER P defensive rebound (2)
07:24				1 SCOTT J 2pt FG in the paint, layup missed
07:22				1 SCOTT J offensive rebound (2)
07:22		<b>23-23</b>	<b>0</b>	1 SCOTT J 2pt FG second chance in the paint, layup made (10)
07:08	10 HOUSE J foul drawn (1)			10 CLIFFORD N foul personal (1 - 3)
07:08	Timeout media			
07:08	22 AMZIL M substitution out			
07:08	23 JOSEPH N substitution in			
07:08				0 EVANS K substitution out
07:08				15 LAKE J substitution out



**Colorado St. at New Mexico**

03/15/24 Thomas & Mack Center, Las Vegas  
2023-24 Men's Basketball

Game Time: 9:00 PM

Game Duration: 1:59

Attendance: 13,213

Officials: Michael Reed, Michael Irving, Nate Harris

Game Time	UNM	Score	Diff	CSU
07:08				3 STRONG J substitution in
07:08				4 STEVENS I substitution in
07:05	5 MASHBURN, JR. J 2pt FG outside the paint, floating jump shot made (4)	<b>25-23</b>	<b>2</b>	
07:05	10 HOUSE J assist (4)			
06:54	5 MASHBURN, JR. J foul personal (1 - 6)			1 SCOTT J foul drawn (3)
06:48		<b>25-25</b>	<b>0</b>	1 SCOTT J 2pt FG in the paint, layup made (12)
06:48				12 CARTIER P assist (1)
06:18	10 HOUSE J 2pt FG in the paint, jump shot missed			
06:15				1 SCOTT J defensive rebound (3)
06:10				10 CLIFFORD N 2pt FG in the paint, layup missed
06:08	23 JOSEPH N defensive rebound (3)			
05:57	5 MASHBURN, JR. J foul drawn (1)			10 CLIFFORD N foul personal (2 - 4)
05:57				10 CLIFFORD N substitution out
05:57				15 LAKE J substitution in
05:44	5 MASHBURN, JR. J 2pt FG in the paint, jump shot made (6)	<b>27-25</b>	<b>2</b>	
05:19				3 STRONG J 3pt FG , jump shot missed
05:17	defensive rebound (11)			
05:00	10 HOUSE J 2pt FG outside the paint, jump shot missed			
04:58	23 JOSEPH N offensive rebound (4)			
04:53	3 WASHINGTON T 3pt FG second chance, jump shot missed			
04:51				12 CARTIER P defensive rebound (3)
04:34				15 LAKE J 3pt FG , jump shot missed
04:31	23 JOSEPH N defensive rebound (5)			
04:17	23 JOSEPH N 2pt FG outside the paint, jump shot missed			
04:15	15 TOPPIN J offensive rebound (2)			
04:14	15 TOPPIN J foul drawn (1)			15 LAKE J foul personal (1 - 5)
04:14	3 WASHINGTON T substitution out			
04:14	15 TOPPIN J substitution out			
04:14	0 BAKER JR. J substitution in			
04:14	22 AMZIL M substitution in			
04:14				1 SCOTT J substitution out
04:14				12 CARTIER P substitution out
04:14				20 PALMER J substitution in
04:14				21 MBEMBA R substitution in
04:05	23 JOSEPH N turnover bad pass (2)			15 LAKE J steal (1)
03:43				3 STRONG J 3pt FG from turnover, jump shot missed
03:41	23 JOSEPH N defensive rebound (6)			
03:27	0 BAKER JR. J 3pt FG , jump shot made (3)	<b>30-25</b>	<b>5</b>	
03:27	10 HOUSE J assist (5)			
03:09				4 STEVENS I 2pt FG in the paint, jump shot missed
03:03	10 HOUSE J defensive rebound (4)			
03:01	0 BAKER JR. J 3pt FG , jump shot missed			
02:59				20 PALMER J defensive rebound (4)
02:41	10 HOUSE J steal (1)			21 MBEMBA R turnover lost ball (1)
02:38	10 HOUSE J 2pt FG fast break from turnover in the paint, layup made (9)	<b>32-25</b>	<b>7</b>	
02:19				Timeout media
02:19				20 PALMER J substitution out
02:19				21 MBEMBA R substitution out



Official Basketball Play by Play - First Half

**Colorado St. at New Mexico**

03/15/24 Thomas & Mack Center, Las Vegas  
2023-24 Men's Basketball

**Game Time:** 9:00 PM

**Game Duration:** 1:59

**Attendance:** 13,213

**Officials:** Michael Reed, Michael Irving, Nate Harris

Game Time	UNM	Score	Diff	CSU
02:19				1 SCOTT J substitution in
02:19				12 CARTIER P substitution in
02:03				1 SCOTT J 2pt FG in the paint, layup missed
01:59	0 BAKER JR. J defensive rebound (1)			
01:46	10 HOUSE J 2pt FG in the paint, layup blocked			
01:46				1 SCOTT J block (2)
01:42				12 CARTIER P defensive rebound (4)
01:41				3 STRONG J 2pt FG in the paint, layup missed
01:38	10 HOUSE J defensive rebound (5)			
01:32	Timeout 30 Sec			
01:23	23 JOSEPH N turnover dribbling violation (3)			
00:54				4 STEVENS I 3pt FG from turnover, jump shot missed
00:52	5 MASHBURN, JR. J defensive rebound (2)			
00:47	5 MASHBURN, JR. J foul drawn (2)			4 STEVENS I foul shooting (2 - 6)
00:47	5 MASHBURN, JR. J free throw fast break 1 - 2 made (7)	<b>33-25</b>	<b>8</b>	
00:47	5 MASHBURN, JR. J free throw fast break 2 - 2 missed			
00:47				1 SCOTT J defensive rebound (4)
00:38				4 STEVENS I turnover travel (3)
00:38	23 JOSEPH N substitution out			
00:38	15 TOPPIN J substitution in			
00:38				4 STEVENS I substitution out
00:38				2 JACKSON T substitution in
00:11	15 TOPPIN J 2pt FG from turnover in the paint, jump shot missed			
00:08				defensive rebound (19)
00:08				2 JACKSON T substitution out
00:08				10 CLIFFORD N substitution in
00:02				1 SCOTT J 3pt FG , jump shot blocked
00:02	22 AMZIL M block (1)			
00:02				1 SCOTT J offensive rebound (5)
<b>END OF PERIOD</b>				
<b>UNM 33-25 CSU</b>				



Officials: Michael Reed, Michael Irving, Nate Harris

Colorado St. - 25

NO.	Name	F	Min	FG			Rebounds			Fouls		TP	AS	TO	ST	Blocks		+/-
				M-A	M-A	M-A	OR	DR	TOT	PF	FD					BS	BA	
1	Joel Scott	F	14:34	5-8	1-2	1-1	2	3	5	0	3	12	0	0	0	2	1	-5
12	Patrick Cartier	F	12:51	1-2	0-1	1-1	1	3	4	0	2	3	1	0	0	0	0	-8
3	Josiah Strong	G	11:33	0-5	0-3	0-0	0	0	0	0	0	0	0	0	0	0	1	-19
4	Isaiah Stevens	G	17:05	0-6	0-2	2-2	0	2	2	2	0	2	1	3	0	0	0	-11
10	Nique Clifford	G	10:59	0-4	0-1	0-0	0	1	1	2	0	0	2	1	1	0	1	-2
15	Jalen Lake		14:24	0-2	0-2	0-0	0	0	0	1	0	0	0	0	1	0	0	3
20	Joe Palmer		08:05	1-4	1-2	0-0	2	2	4	1	0	3	1	0	0	0	1	2
2	Taviontae Jackson		03:42	1-1	0-0	0-0	0	1	1	0	0	2	0	0	0	0	0	2
21	Rashaan Mbemba		04:30	0-0	0-0	0-0	0	0	0	0	0	0	0	1	1	0	0	-5
0	Kyan Evans		02:17	1-1	1-1	0-0	0	0	0	0	0	3	0	0	0	0	0	3
Team							2	1	3			0			1			
<b>Totals</b>				9-33	3-14	4-4	7	13	20	6	5	25	5	6	3	2	4	-8

Shooting By Period		
1 <sup>st</sup> FG%	9-33	27.3%
3PT%	3-14	21.4%
FT%	4-4	100%
GM FG%	9-33	27.3%
3PT%	3-14	21.4%
FT%	4-4	100.0%

Dead Ball Rebounds: 1, 0

Technical Fouls::NONE

New Mexico - 33

NO.	Name	F	Min	FG			Rebounds			Fouls		TP	AS	TO	ST	Blocks		+/-
				M-A	M-A	M-A	OR	DR	TOT	PF	FD					BS	BA	
15	JT Toppin	F	14:27	1-3	0-0	0-0	1	1	2	0	1	2	0	0	0	1	1	2
23	Nelly Joseph	F	15:31	3-5	0-0	0-0	2	4	6	1	1	6	0	3	0	1	0	14
2	Donovan Dent	G	06:09	1-1	0-0	0-0	0	0	0	2	0	2	0	1	1	1	0	6
5	Jamal Mashburn, Jr.	G	18:26	3-5	0-1	1-2	0	2	2	1	2	7	0	0	0	0	0	10
10	Jaelen House	G	19:18	4-8	1-1	0-0	0	5	5	1	1	9	5	0	1	0	1	10
0	Jemarl Baker Jr.		09:22	1-4	1-3	0-0	0	1	1	0	0	3	0	0	0	0	0	2
22	Mustapha Amzil		10:02	1-1	0-0	2-2	0	1	1	0	1	4	0	0	0	1	0	0
3	Tru Washington		06:45	0-2	0-1	0-0	0	0	0	1	0	0	1	0	0	0	0	-4
Team							0	2	2			0			0			
<b>Totals</b>				14-29	2-6	3-4	3	16	19	6	6	33	6	4	2	4	2	8

Shooting By Period		
1 <sup>st</sup> FG%	14-29	48.3%
3PT%	2-6	33.3%
FT%	3-4	75%
GM FG%	14-29	48.3%
3PT%	2-6	33.3%
FT%	3-4	75.0%

Dead Ball Rebounds: 0, 0

Technical Fouls:Dent 1<sup>st</sup>10:17

	CSU	UNM
Biggest lead	0 (1 <sup>st</sup> 20:00)	11 (1 <sup>st</sup> 16:15)
Best Scoring Run	6(1 <sup>st</sup> 13:41)	11(1 <sup>st</sup> 16:15)
Lead Changes	0	
Times Tied	2	
Time with Lead	00:00	18:23

Points from	CSU	UNM
Turnovers	2	9
Paint	12	20
Second Chance	5	2
Fast Breaks	2	5
Bench	8	7

	Period by Period Scoring		
	1st	2nd	TOT
CSU	25	36	61
UNM	33	41	74



**Colorado St. at New Mexico**

03/15/24 Thomas & Mack Center, Las Vegas  
2023-24 Men's Basketball

**Game Time:** 9:00 PM  
**Game Duration:** 1:59  
**Attendance:** 13,213

**Officials:** Michael Reed, Michael Irving, Nate Harris

**Period 2**

**Quarter Starters:**

<b>UNM</b>	2 Dent D	5 Mashburn, Jr. J	10 House J	15 Toppin J	23 Joseph N
<b>CSU</b>	1 Scott J	3 Strong J	4 Stevens I	10 Clifford N	12 Cartier P

Game Time	UNM	Score	Diff	CSU
20:00	0 BAKER JR. J substitution out			
20:00	22 AMZIL M substitution out			
20:00	2 DENT D substitution in			
20:00	23 JOSEPH N substitution in			
20:00				15 LAKE J substitution out
20:00				4 STEVENS I substitution in
19:44		<b>33-27</b>	<b>6</b>	1 SCOTT J 2pt FG in the paint, layup made (14)
19:44				12 CARTIER P assist (2)
19:29	15 TOPPIN J 2pt FG in the paint, jump shot missed			
19:27				defensive rebound (21)
19:11				1 SCOTT J 2pt FG in the paint, layup blocked
19:11	15 TOPPIN J block (2)			
19:08				offensive rebound (22)
19:06	2 DENT D steal (2)			10 CLIFFORD N turnover bad pass (2)
19:01	2 DENT D 2pt FG fast break from turnover in the paint, layup made (4)	<b>35-27</b>	<b>8</b>	
18:45		<b>35-29</b>	<b>6</b>	1 SCOTT J 2pt FG in the paint, layup made (16)
18:31	5 MASHBURN, JR. J 2pt FG outside the paint, jump shot missed			
18:27	15 TOPPIN J offensive rebound (3)			
18:25	10 HOUSE J 3pt FG second chance, jump shot missed			
18:22	15 TOPPIN J offensive rebound (4)			
18:14	5 MASHBURN, JR. J 2pt FG second chance outside the paint, jump shot missed			
18:12	23 JOSEPH N offensive rebound (7)			
18:12	23 JOSEPH N foul drawn (2)			10 CLIFFORD N foul personal (3 - 1)
18:12				10 CLIFFORD N substitution out
18:12				2 JACKSON T substitution in
18:05	5 MASHBURN, JR. J 2pt FG second chance outside the paint, jump shot missed			
18:03				3 STRONG J defensive rebound (1)
17:57				12 CARTIER P 2pt FG in the paint, dunk, blocked
17:57	23 JOSEPH N block (2)			
17:54				offensive rebound (24)
17:41				12 CARTIER P turnover lost ball (1)
17:31	2 DENT D turnover bad pass (2)			1 SCOTT J steal (1)
17:27	10 HOUSE J foul drawn (2)			2 JACKSON T foul offensive (1 - 2)
17:27				2 JACKSON T turnover offensive (1)
17:12	15 TOPPIN J 2pt FG from turnover in the paint, layup made (4)	<b>37-29</b>	<b>8</b>	
17:12	10 HOUSE J assist (6)			
16:53				1 SCOTT J 2pt FG in the paint, layup missed
16:51				1 SCOTT J offensive rebound (6)
16:50				1 SCOTT J 2pt FG second chance in the paint, layup missed
16:48				2 JACKSON T offensive rebound (2)





**Colorado St. at New Mexico**

03/15/24 Thomas & Mack Center, Las Vegas  
2023-24 Men's Basketball

**Game Time:** 9:00 PM  
**Game Duration:** 1:59  
**Attendance:** 13,213

**Officials:** Michael Reed, Michael Irving, Nate Harris

Game Time	UNM	Score	Diff	CSU
16:47				2 JACKSON T 2pt FG second chance in the paint, jump shot blocked
16:47	15 TOPPIN J block (3)			
16:44				3 STRONG J offensive rebound (2)
16:42				3 STRONG J 2pt FG second chance outside the paint, jump shot missed
16:40	2 DENT D defensive rebound (1)			
16:31	23 JOSEPH N 2pt FG in the paint, layup made (8)	<b>39-29</b>	<b>10</b>	
16:31	2 DENT D assist (1)			
16:17	5 MASHBURN, JR. J foul shooting (2 - 1)			12 CARTIER P foul drawn (3)
16:16		<b>39-30</b>	<b>9</b>	12 CARTIER P free throw 1 - 2 made (4)
16:16	15 TOPPIN J substitution out			
16:16	22 AMZIL M substitution in			
16:16				3 STRONG J substitution out
16:16				15 LAKE J substitution in
16:16		<b>39-31</b>	<b>8</b>	12 CARTIER P free throw 2 - 2 made (5)
16:16				12 CARTIER P substitution out
16:16				20 PALMER J substitution in
16:06	2 DENT D 2pt FG outside the paint, jump shot missed			
16:03				2 JACKSON T defensive rebound (3)
15:51				20 PALMER J 3pt FG , jump shot missed
15:49	23 JOSEPH N defensive rebound (8)			
15:34	22 AMZIL M 2pt FG in the paint, jump shot missed			
15:31	offensive rebound (25)			
15:31	Timeout media			
15:31	23 JOSEPH N substitution out			
15:31	15 TOPPIN J substitution in			
15:29	10 HOUSE J foul drawn (3)			15 LAKE J foul shooting (2 - 3)
15:29	10 HOUSE J free throw 1 - 2 made (10)	<b>40-31</b>	<b>9</b>	
15:29	10 HOUSE J free throw 2 - 2 made (11)	<b>41-31</b>	<b>10</b>	
15:08				2 JACKSON T 3pt FG , jump shot missed
15:06	15 TOPPIN J defensive rebound (5)			
14:59	Timeout 30 Sec			
14:59	5 MASHBURN, JR. J substitution out			
14:59	0 BAKER JR. J substitution in			
14:56	2 DENT D foul drawn (1)			2 JACKSON T foul personal (2 - 4)
14:51	22 AMZIL M 3pt FG , jump shot made (7)	<b>44-31</b>	<b>13</b>	
14:51	2 DENT D assist (2)			
14:34		<b>44-34</b>	<b>10</b>	20 PALMER J 3pt FG , jump shot made (6)
14:34				1 SCOTT J assist (1)
14:14	turnover (6)			
14:04				2 JACKSON T 2pt FG from turnover in the paint, layup missed
14:02	0 BAKER JR. J defensive rebound (2)			
13:50	15 TOPPIN J 2pt FG in the paint, layup made (6)	<b>46-34</b>	<b>12</b>	
13:50	2 DENT D assist (3)			
13:41		<b>46-36</b>	<b>10</b>	4 STEVENS I 2pt FG outside the paint, jump shot made (4)
13:22	15 TOPPIN J 2pt FG in the paint, layup made (8)	<b>48-36</b>	<b>12</b>	
13:22	2 DENT D assist (4)			
13:09	10 HOUSE J foul personal (2 - 2)			4 STEVENS I foul drawn (1)
13:09				1 SCOTT J substitution out



**Colorado St. at New Mexico**

03/15/24 Thomas & Mack Center, Las Vegas  
2023-24 Men's Basketball

**Game Time:** 9:00 PM  
**Game Duration:** 1:59  
**Attendance:** 13,213

**Officials:** Michael Reed, Michael Irving, Nate Harris

Game Time	UNM	Score	Diff	CSU
13:09				2 JACKSON T substitution out
13:09				10 CLIFFORD N substitution in
13:09				12 CARTIER P substitution in
13:09	0 BAKER JR. J foul personal (1 - 3)			10 CLIFFORD N foul drawn (1)
13:02	22 AMZIL M steal (1)			4 STEVENS I turnover lost ball (4)
12:55	0 BAKER JR. J 3pt FG from turnover, jump shot made (6)	<b>51-36</b>	<b>15</b>	
12:55	10 HOUSE J assist (7)			
12:28	22 AMZIL M foul personal (1 - 4)			20 PALMER J foul drawn (1)
12:24		<b>51-38</b>	<b>13</b>	10 CLIFFORD N 2pt FG in the paint, layup made (2)
12:06	0 BAKER JR. J 3pt FG , jump shot missed			
12:04	22 AMZIL M offensive rebound (2)			
12:02	10 HOUSE J 3pt FG second chance, jump shot missed			
11:59				defensive rebound (29)
11:59	Timeout media			
11:59	10 HOUSE J substitution out			
11:59	5 MASHBURN, JR. J substitution in			
11:49				10 CLIFFORD N 3pt FG , jump shot missed
11:47				10 CLIFFORD N offensive rebound (2)
11:42				10 CLIFFORD N turnover bad pass (3)
11:29	15 TOPPIN J 2pt FG from turnover in the paint, layup made (10)	<b>53-38</b>	<b>15</b>	
11:29	22 AMZIL M assist (1)			
11:01				12 CARTIER P 2pt FG in the paint, jump shot blocked
11:01	22 AMZIL M block (2)			
11:01				offensive rebound (31)
10:59		<b>53-40</b>	<b>13</b>	4 STEVENS I 2pt FG second chance outside the paint, jump shot made (6)
10:59				10 CLIFFORD N assist (3)
10:32	15 TOPPIN J 2pt FG in the paint, layup made (12)	<b>55-40</b>	<b>15</b>	
10:32	2 DENT D assist (5)			
10:17				15 LAKE J 3pt FG , jump shot missed
10:15	15 TOPPIN J defensive rebound (6)			
10:02	5 MASHBURN, JR. J 3pt FG , jump shot missed			
10:00				20 PALMER J defensive rebound (5)
09:38				10 CLIFFORD N 2pt FG in the paint, jump shot missed
09:36	15 TOPPIN J defensive rebound (7)			
09:30	22 AMZIL M foul drawn (2)			20 PALMER J foul personal (2 - 5)
09:30	15 TOPPIN J substitution out			
09:30	23 JOSEPH N substitution in			
09:30				12 CARTIER P substitution out
09:30				15 LAKE J substitution out
09:30				1 SCOTT J substitution in
09:30				3 STRONG J substitution in
09:24	2 DENT D turnover lost ball (3)			3 STRONG J steal (1)
09:19		<b>55-42</b>	<b>13</b>	20 PALMER J 2pt FG fast break from turnover in the paint, dunk, made (8)
09:19				10 CLIFFORD N assist (4)
09:06	22 AMZIL M 3pt FG , jump shot made (10)	<b>58-42</b>	<b>16</b>	
09:06	2 DENT D assist (6)			
08:55		<b>58-44</b>	<b>14</b>	1 SCOTT J 2pt FG in the paint, layup made (18)
08:34	2 DENT D 2pt FG in the paint, layup missed			



**Colorado St. at New Mexico**

03/15/24 Thomas & Mack Center, Las Vegas  
2023-24 Men's Basketball

**Game Time:** 9:00 PM  
**Game Duration:** 1:59  
**Attendance:** 13,213

**Officials:** Michael Reed, Michael Irving, Nate Harris

Game Time	UNM	Score	Diff	CSU
08:30				4 STEVENS I defensive rebound (3)
08:24	22 AMZIL M steal (2)			4 STEVENS I turnover bad pass (5)
08:06	2 DENT D 2pt FG from turnover in the paint, jump shot missed			
08:03	5 MASHBURN, JR. J offensive rebound (3)			
08:03	5 MASHBURN, JR. J foul drawn (3)			3 STRONG J foul personal (1 - 6)
08:03	0 BAKER JR. J substitution out			
08:03	10 HOUSE J substitution in			
08:03				20 PALMER J substitution out
08:03				21 MBEMBA R substitution in
08:03				4 STEVENS I substitution out
08:03				0 EVANS K substitution in
07:58	5 MASHBURN, JR. J 2pt FG from turnover second chance in the paint, jump shot missed			
07:55				1 SCOTT J defensive rebound (7)
07:33				0 EVANS K 3pt FG , jump shot missed
07:30	23 JOSEPH N defensive rebound (9)			
07:11	jump ball situation			
07:11	Timeout media			
07:11				0 EVANS K substitution out
07:11				3 STRONG J substitution out
07:11				4 STEVENS I substitution in
07:11				15 LAKE J substitution in
07:00	5 MASHBURN, JR. J 2pt FG outside the paint, jump shot missed			
06:58				10 CLIFFORD N defensive rebound (3)
06:51		<b>58-47</b>	<b>11</b>	10 CLIFFORD N 3pt FG , jump shot made (5)
06:51				4 STEVENS I assist (2)
06:30	2 DENT D 2pt FG in the paint, layup blocked			
06:30				21 MBEMBA R block (1)
06:27	23 JOSEPH N offensive rebound (10)			
06:27	23 JOSEPH N foul drawn (3)			21 MBEMBA R foul shooting (1 - 7)
06:27	23 JOSEPH N free throw 1 - 2 made (9)	<b>59-47</b>	<b>12</b>	
06:27	5 MASHBURN, JR. J substitution out			
06:27	0 BAKER JR. J substitution in			
06:27	23 JOSEPH N free throw 2 - 2 missed			
06:27				10 CLIFFORD N defensive rebound (4)
06:20	23 JOSEPH N foul personal (2 - 5)			1 SCOTT J foul drawn (4)
06:16				21 MBEMBA R 2pt FG in the paint, layup blocked
06:16	22 AMZIL M block (3)			
06:12				offensive rebound (37)
06:12	10 HOUSE J substitution out			
06:12	5 MASHBURN, JR. J substitution in			
06:12				21 MBEMBA R substitution out
06:12				12 CARTIER P substitution in
06:00		<b>59-49</b>	<b>10</b>	4 STEVENS I 2pt FG second chance in the paint, jump shot made (8)
05:45	2 DENT D 2pt FG in the paint, layup made (6)	<b>61-49</b>	<b>12</b>	
05:20		<b>61-52</b>	<b>9</b>	4 STEVENS I 3pt FG , jump shot made (11)
05:20				15 LAKE J assist (1)
04:59	2 DENT D turnover lost ball (4)			15 LAKE J steal (2)
04:51				10 CLIFFORD N 2pt FG from turnover in the paint, dunk, missed



**Colorado St. at New Mexico**

03/15/24 Thomas & Mack Center, Las Vegas  
2023-24 Men's Basketball

**Game Time:** 9:00 PM  
**Game Duration:** 1:59  
**Attendance:** 13,213

**Officials:** Michael Reed, Michael Irving, Nate Harris

Game Time	UNM	Score	Diff	CSU
04:49				1 SCOTT J offensive rebound (8)
04:48		<b>61-54</b>	<b>7</b>	1 SCOTT J 2pt FG from turnover second chance in the paint, layup made (20)
04:46	Timeout 30 Sec			
04:46	5 MASHBURN, JR. J substitution out			
04:46	22 AMZIL M substitution out			
04:46	10 HOUSE J substitution in			
04:46	15 TOPPIN J substitution in			
04:34	23 JOSEPH N 2pt FG in the paint, layup missed			
04:30	15 TOPPIN J offensive rebound (8)			
04:30	15 TOPPIN J 2pt FG second chance in the paint, layup made (14)	<b>63-54</b>	<b>9</b>	
04:11				1 SCOTT J turnover 3 seconds (1)
03:47	15 TOPPIN J 2pt FG from turnover in the paint, hook shot made (16)	<b>65-54</b>	<b>11</b>	
03:47	10 HOUSE J assist (8)			
03:25	10 HOUSE J foul personal (3 - 6)			1 SCOTT J foul drawn (5)
03:25	Timeout media			
03:11		<b>65-56</b>	<b>9</b>	12 CARTIER P 2pt FG in the paint, layup made (7)
03:11				10 CLIFFORD N assist (5)
02:50	15 TOPPIN J 2pt FG in the paint, layup missed			
02:43	23 JOSEPH N offensive rebound (11)			
02:43	23 JOSEPH N 2pt FG second chance in the paint, layup missed			
02:42				10 CLIFFORD N defensive rebound (5)
02:36	10 HOUSE J steal (2)			12 CARTIER P turnover bad pass (2)
02:33	10 HOUSE J 2pt FG fast break from turnover in the paint, layup made (13)	<b>67-56</b>	<b>11</b>	
02:17				15 LAKE J 3pt FG , jump shot missed
02:14	0 BAKER JR. J defensive rebound (3)			
01:52	10 HOUSE J 2pt FG in the paint, jump shot missed			
01:50				10 CLIFFORD N defensive rebound (6)
01:42				4 STEVENS I 3pt FG , jump shot missed
01:40	15 TOPPIN J defensive rebound (9)			
01:30	2 DENT D foul drawn (2)			10 CLIFFORD N foul personal (4 - 8)
01:30				12 CARTIER P substitution out
01:30				20 PALMER J substitution in
01:30	2 DENT D 1&1 free throw 1 made (7)	<b>68-56</b>	<b>12</b>	
01:30	2 DENT D 1&1 free throw 2 missed			
01:30				10 CLIFFORD N defensive rebound (7)
01:24	0 BAKER JR. J foul personal (2 - 7)			10 CLIFFORD N foul drawn (2)
01:24	23 JOSEPH N substitution out			
01:24	22 AMZIL M substitution in			
01:24		<b>68-57</b>	<b>11</b>	10 CLIFFORD N 1&1 free throw 1 made (6)
01:24				10 CLIFFORD N 1&1 free throw 2 missed
01:24				10 CLIFFORD N offensive rebound (8)
01:22				15 LAKE J 3pt FG second chance, jump shot missed
01:18				10 CLIFFORD N offensive rebound (9)
01:16		<b>68-59</b>	<b>9</b>	15 LAKE J 2pt FG second chance in the paint, jump shot made (2)
01:16				10 CLIFFORD N assist (6)
01:08				Timeout 60 Sec



**Colorado St. at New Mexico**

03/15/24 Thomas & Mack Center, Las Vegas  
2023-24 Men's Basketball

**Game Time:** 9:00 PM  
**Game Duration:** 1:59  
**Attendance:** 13,213

**Officials:** Michael Reed, Michael Irving, Nate Harris

Game Time	UNM	Score	Diff	CSU
01:08	0 BAKER JR. J substitution out			
01:08	5 MASHBURN, JR. J substitution in			
01:08				4 STEVENS I substitution out
01:08				10 CLIFFORD N substitution out
01:08				2 JACKSON T substitution in
01:08				3 STRONG J substitution in
01:04	10 HOUSE J foul drawn (4)			20 PALMER J foul personal (3 - 9)
01:04	5 MASHBURN, JR. J substitution out			
01:04	22 AMZIL M substitution out			
01:04	0 BAKER JR. J substitution in			
01:04	23 JOSEPH N substitution in			
01:04				2 JACKSON T substitution out
01:04				3 STRONG J substitution out
01:04				4 STEVENS I substitution in
01:04				10 CLIFFORD N substitution in
01:04	10 HOUSE J 1&1 free throw 1 made (14)	<b>69-59</b>	<b>10</b>	
01:04	10 HOUSE J 1&1 free throw 2 made (15)	<b>70-59</b>	<b>11</b>	
00:57				1 SCOTT J 3pt FG , jump shot missed
00:54				offensive rebound (44)
00:53		<b>70-61</b>	<b>9</b>	4 STEVENS I 2pt FG second chance outside the paint, jump shot made (13)
00:53				10 CLIFFORD N assist (7)
00:52	10 HOUSE J foul drawn (5)			4 STEVENS I foul personal (3 - 10)
00:52	10 HOUSE J free throw fast break 1 - 2 made (16)	<b>71-61</b>	<b>10</b>	
00:52	10 HOUSE J free throw fast break 2 - 2 made (17)	<b>72-61</b>	<b>11</b>	
00:46				4 STEVENS I 3pt FG , jump shot missed
00:44	23 JOSEPH N defensive rebound (12)			
00:38	10 HOUSE J foul drawn (6)			15 LAKE J foul personal (3 - 11)
00:38	10 HOUSE J free throw 1 - 2 made (18)	<b>73-61</b>	<b>12</b>	
00:38	10 HOUSE J free throw 2 - 2 made (19)	<b>74-61</b>	<b>13</b>	
00:35				10 CLIFFORD N 3pt FG , jump shot missed
00:31	0 BAKER JR. J defensive rebound (4)			
00:01	turnover shot clock (9)			
<b>END OF GAME</b>				
<b>UNM 74-61 CSU</b>				



**Colorado St. at New Mexico**

03/15/24 Thomas & Mack Center, Las Vegas  
2023-24 Men's Basketball

Game Time: 9:00 PM  
Game Duration: 1:59  
Attendance: 13,213

Officials: Michael Reed, Michael Irving, Nate Harris

**Colorado St. - 36**

NO.	Name	F	Min	FG	3P	FT	Rebounds			Fouls		TP	AS	TO	ST	Blocks		+/-
				M-A	M-A	M-A	OR	DR	TOT	PF	FD					BS	BA	
1	Joel Scott	F	16:21	4-8	0-1	0-0	2	1	3	0	2	8	1	1	1	0	1	-2
12	Patrick Cartier	F	12:05	1-3	0-0	2-2	0	0	0	0	1	4	1	2	0	0	2	-2
3	Josiah Strong	G	06:07	0-1	0-0	0-0	1	1	2	1	0	0	0	0	1	0	0	
4	Isaiah Stevens	G	19:04	5-7	1-3	0-0	0	1	1	1	1	11	1	2	0	0	-5	
10	Nique Clifford	G	14:53	2-6	1-3	1-2	3	5	8	2	2	6	5	2	0	0	1	
2	Taviontae Jackson		05:07	0-3	0-1	0-0	1	1	2	2	0	0	0	1	0	0	-6	
15	Jalen Lake		13:57	1-4	0-3	0-0	0	0	0	2	0	2	1	0	1	0	-5	
20	Joe Palmer		09:43	2-3	1-2	0-0	0	1	1	2	1	5	0	0	0	0	-8	
0	Kyan Evans		00:52	0-1	0-1	0-0	0	0	0	0	0	0	0	0	0	0	0	
21	Rashaan Mbemba		01:51	0-1	0-0	0-0	0	0	0	1	0	0	0	0	0	1	2	
Team							5	2	7			0		0				
<b>Totals</b>				15-37	3-14	3-4	12	12	24	11	7	36	9	8	3	1	5	-5

Shooting By Period		
2 <sup>nd</sup> FG%	15-37	40.5%
3PT%	3-14	21.4%
FT%	3-4	75%
GM FG%	15-37	40.5%
3PT%	3-14	21.4%
FT%	3-4	75.0%

Dead Ball Rebounds: 0, 0

Technical Fouls::NONE

**New Mexico - 41**

NO.	Name	F	Min	FG	3P	FT	Rebounds			Fouls		TP	AS	TO	ST	Blocks		+/-
				M-A	M-A	M-A	OR	DR	TOT	PF	FD					BS	BA	
15	JT Toppin	F	14:31	7-9	0-0	0-0	3	4	7	0	0	14	0	0	0	2	0	14
23	Nelly Joseph	F	13:39	1-3	0-0	1-2	3	3	6	1	2	3	0	0	0	1	0	1
2	Donovan Dent	G	20:00	2-6	0-0	1-2	0	1	1	0	2	5	6	3	1	0	1	5
5	Jamal Mashburn, Jr.	G	12:03	0-6	0-1	0-0	1	0	1	1	1	0	0	0	0	0	0	-4
10	Jaelen House	G	14:38	1-4	0-2	8-8	0	0	0	2	5	10	3	0	1	0	0	9
22	Mustapha Amzil		11:50	2-3	2-2	0-0	1	0	1	1	1	6	1	0	2	2	0	-5
0	Jemarl Baker Jr.		13:19	1-2	1-2	0-0	0	3	3	2	0	3	0	0	0	0	0	5
Team							1	0	1			0		2				
<b>Totals</b>				14-33	3-7	10-12	9	11	20	7	11	41	10	5	4	5	1	5

Shooting By Period		
2 <sup>nd</sup> FG%	14-33	42.4%
3PT%	3-7	42.9%
FT%	10-12	83.3%
GM FG%	14-33	42.4%
3PT%	3-7	42.9%
FT%	10-12	83.3%

Dead Ball Rebounds: 0, 0

Technical Fouls::NONE

	CSU	UNM
Biggest lead	0 (1 <sup>st</sup> 20:00)	16 (2 <sup>nd</sup> 9:06)
Best Scoring Run	5(2 <sup>nd</sup> 6:51)	5(2 <sup>nd</sup> 14:51)
Lead Changes	0	
Times Tied	0	
Time with Lead	00:00	19:44

Points from	CSU	UNM
Turnovers	4	13
Paint	18	22
Second Chance	10	5
Fast Breaks	3	6
Bench	7	9

	Period by Period Scoring		
	1st	2nd	TOT
CSU	25	36	61
UNM	33	41	74



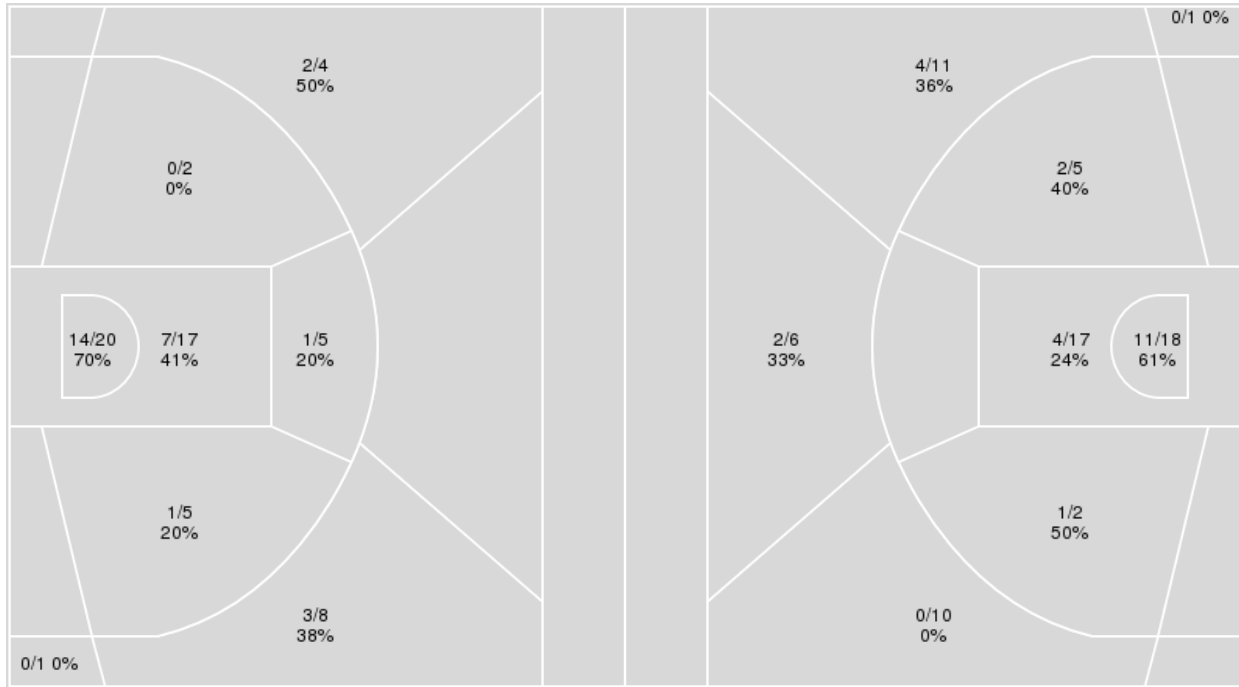
**Officials:** Michael Reed, Michael Irving, Nate Harris

{ Players => All; } FG Types => All; Results => All;

{ Players => All; } FG Types => All; Results => All;

**New Mexico**

**Colorado St.**



<b>New Mexico</b>	<b>M/A</b>	<b>%</b>
Field Goals	28/62	45
2 Points	23/49	47
3 Points	5/13	38
Free Throws	13/16	81

<b>Colorado St.</b>	<b>M/A</b>	<b>%</b>
Field Goals	24/70	34
2 Points	18/42	43
3 Points	6/28	21
Free Throws	7/8	88



**Colorado St. at New Mexico**

03/15/24 Thomas & Mack Center, Las Vegas  
2023-24 Men's Basketball

Game Time: 9:00 PM  
Game Duration: 1:59  
Attendance: 13,213

Officials: Michael Reed, Michael Irving, Nate Harris

**Colorado St.**

No	Name	Mins		Score		Points Diff		Points per Min		Assists		Rebounds		Steals		Turnovers	
		On	Off	On	Off	On	Off	On	Off	On	Off	On	Off	On	Off	On	Off
0	Kyan Evans	03:09	36:51	7 - 4	54 - 70	3	-16	2.22	1.47	1	13	3	41	0	6	0	14
1	Joel Scott	30:55	09:05	51 - 58	10 - 16	-7	-6	1.65	1.10	12	2	36	8	4	2	11	3
2	Taviontae Jackson	08:49	31:11	11 - 15	50 - 59	-4	-9	1.25	1.60	2	12	10	34	2	4	2	12
3	Josiah Strong	17:40	22:20	11 - 30	50 - 44	-19	6	0.62	2.24	3	11	20	24	4	2	10	4
4	Isaiah Stevens	36:09	03:51	54 - 70	7 - 4	-16	3	1.49	1.82	13	1	39	5	6	0	14	0
10	Nique Clifford	25:52	14:08	50 - 51	11 - 23	-1	-12	1.93	0.78	12	2	30	14	3	3	10	4
12	Patrick Cartier	24:56	15:04	33 - 43	28 - 31	-10	-3	1.32	1.86	6	8	26	18	3	3	12	2
15	Jalen Lake	28:21	11:39	50 - 52	11 - 22	-2	-11	1.76	0.94	11	3	30	14	3	3	6	8
20	Joe Palmer	17:48	22:12	33 - 39	28 - 35	-6	-7	1.85	1.26	8	6	18	26	3	3	4	10
21	Rashaan Mbemba	06:21	33:39	5 - 8	56 - 66	-3	-10	0.79	1.66	2	12	8	36	2	4	1	13

**New Mexico**

No	Name	Mins		Score		Points Diff		Points per Min		Assists		Rebounds		Steals		Turnovers	
		On	Off	On	Off	On	Off	On	Off	On	Off	On	Off	On	Off	On	Off
0	Jemarl Baker Jr.	22:41	17:19	44 - 37	30 - 24	7	6	1.94	1.73	10	6	21	18	4	2	7	2
2	Donovan Dent	26:09	13:51	54 - 43	20 - 18	11	2	2.07	1.44	11	5	24	15	5	1	7	2
3	Tru Washington	06:45	33:15	10 - 14	64 - 47	-4	17	1.48	1.92	3	13	6	33	0	6	1	8
5	Jamal Mashburn, Jr.	30:29	09:31	49 - 43	25 - 18	6	7	1.61	2.63	11	5	30	9	4	2	6	3
10	Jaelen House	33:56	06:04	65 - 46	9 - 15	19	-6	1.92	1.48	13	3	36	3	5	1	6	3
15	JT Toppin	28:58	11:02	60 - 44	14 - 17	16	-3	2.07	1.27	13	3	25	14	4	2	5	4
22	Mustapha Amzil	21:52	18:08	36 - 41	38 - 20	-5	18	1.65	2.10	11	5	20	19	3	3	6	3
23	Nelly Joseph	29:10	10:50	52 - 37	22 - 24	15	-2	1.78	2.03	8	8	33	6	5	1	7	2

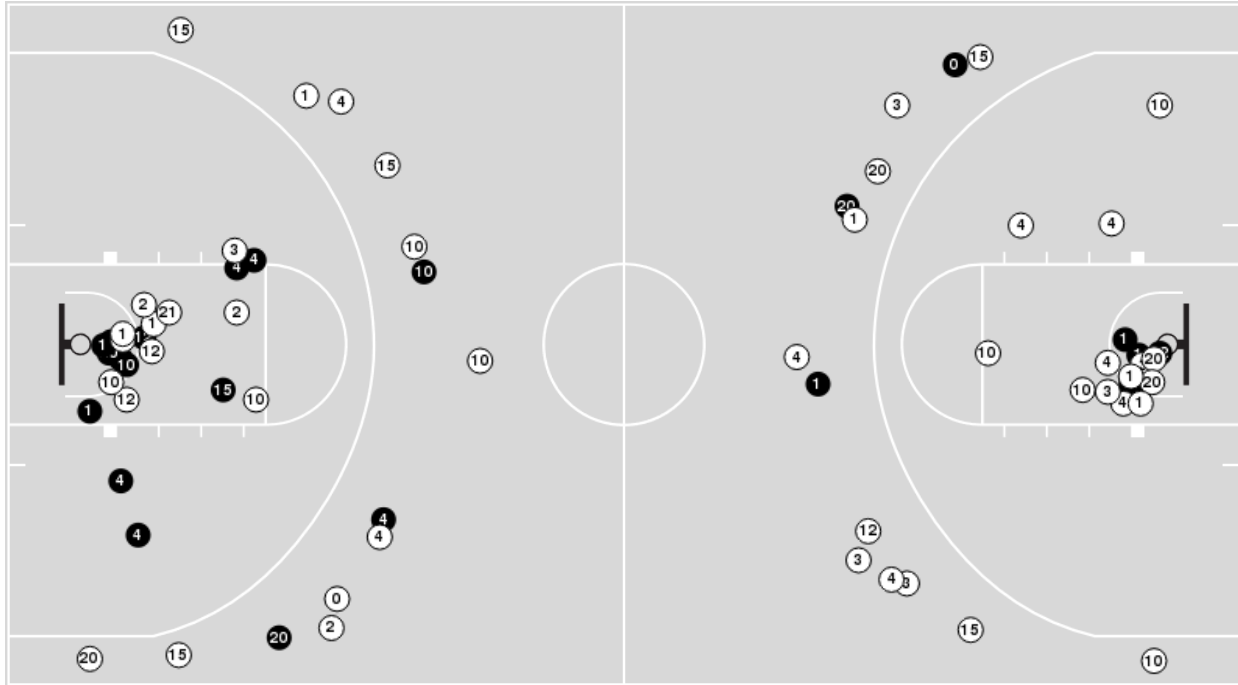




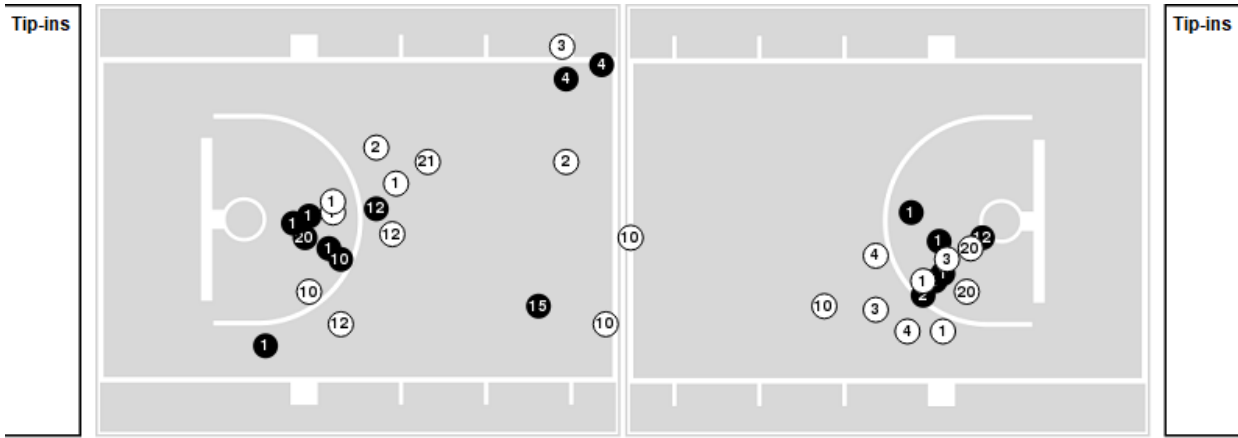
**Officials:** Michael Reed, Michael Irving, Nate Harris

Players => AllFG Types=>AllResults=>All  
**Colorado St.**

**All Field Goals**



**Blow Up Chart**



● Made    ○ Missed    N - Player Number

Colorado St.	M/A	%
Field Goals	24/70	34
2 Points	18/42	43
3 Points	6/28	21
Free Throws	7/8	88

Colorado St.	M/A	%
Points in the Paint	30 (15 / 35)	43
Fast Break Points	5 (3/4)	75
Second Chance Points	15 (7/14)	50
Effective FG%	39	

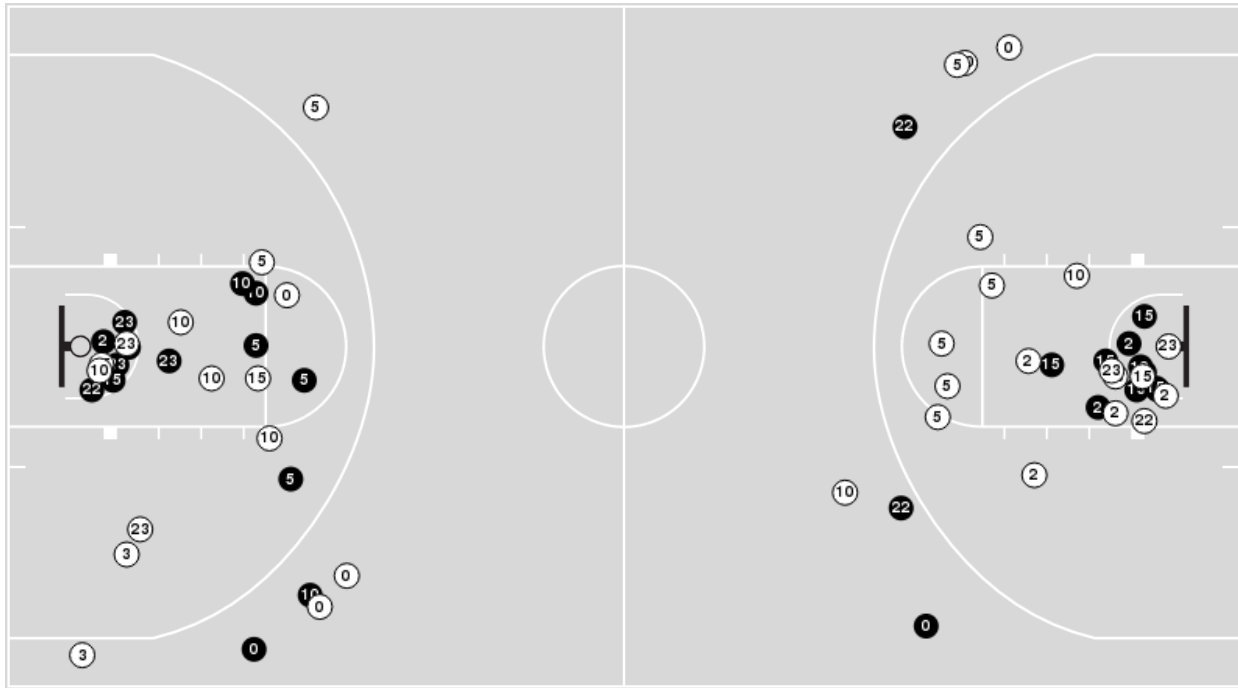


**Officials:** Michael Reed, Michael Irving, Nate Harris

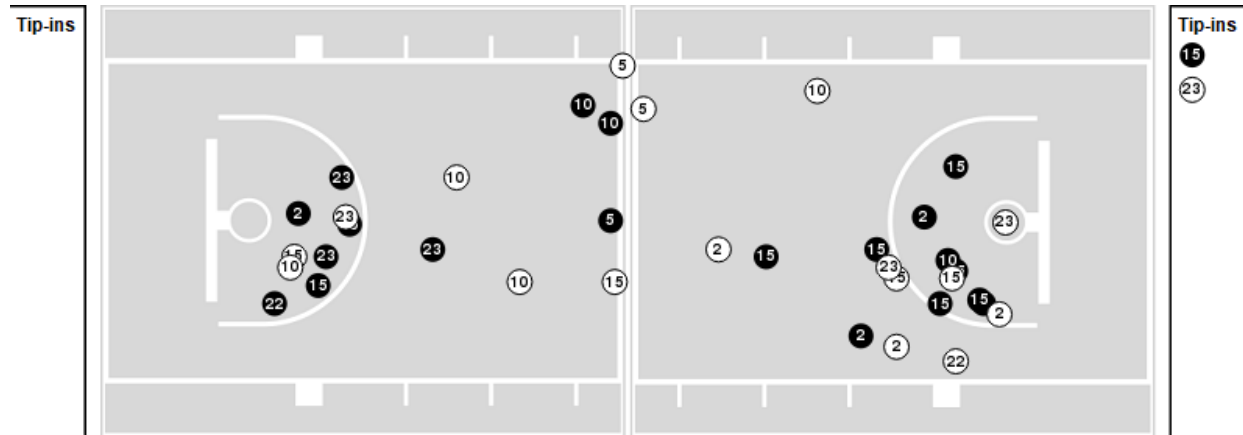
Players => AllFG Types=>AllResults=>All

**New Mexico**

**All Field Goals**



**Blow Up Chart**



● Made    ○ Missed    N - Player Number

New Mexico	M/A	%
Field Goals	28/62	45
2 Points	23/49	47
3 Points	5/13	38
Free Throws	13/16	81

New Mexico	M/A	%
Points in the Paint	42 (21 / 37)	57
Fast Break Points	11 (7/8)	88
Second Chance Points	7 (5/13)	38
Effective FG%	49	



**Colorado St. at New Mexico**

03/15/24 Thomas & Mack Center, Las Vegas  
2023-24 Men's Basketball

**Game Time:** 9:00 PM  
**Game Duration:** 1:59  
**Attendance:** 13,213

**Officials:** Michael Reed, Michael Irving, Nate Harris

**Colorado St.**

Lineup	Quarter On	Time On	Quarter Off	Time Off	Time on Court	Score	Score Diff	Reb	Stl	Tov	Ass	PPP
1- Scott J/3- Strong J/4- Stevens I/10- Clifford N/12- Cartier P/	1	20:00	1	15:35	04:25	0-11	-11	4	1	4	0	0.0000
1- Scott J/4- Stevens I/10- Clifford N/15- Lake J/20- Palmer J/	1	15:35	1	12:56	02:39	9-4	5	4	0	0	2	2.6163
2- Jackson T/4- Stevens I/15- Lake J/20- Palmer J/21- Mbemba R/	1	12:56	1	10:21	02:35	2-2	0	3	1	0	1	0.4000
2- Jackson T/4- Stevens I/12- Cartier P/15- Lake J/20- Palmer J/	1	10:21	1	09:43	00:38	2-0	2	0	0	0	0	1.0638
4- Stevens I/10- Clifford N/12- Cartier P/15- Lake J/20- Palmer J/	1	09:43	1	09:25	00:18	2-2	0	0	0	0	0	2.0000
1- Scott J/4- Stevens I/10- Clifford N/12- Cartier P/15- Lake J/	1	09:25	1	09:25	00:00	1-0	1	0	0	0	0	2.2727
0- Evans K/1- Scott J/10- Clifford N/12- Cartier P/15- Lake J/	1	09:25	1	07:08	02:17	7-4	3	2	0	0	1	2.3333
1- Scott J/3- Strong J/4- Stevens I/10- Clifford N/12- Cartier P/	1	07:08	1	05:57	01:11	2-2	0	1	0	0	1	1.0000
1- Scott J/3- Strong J/4- Stevens I/12- Cartier P/15- Lake J/	1	05:57	1	04:14	01:43	0-2	-2	1	0	0	0	0.0000
3- Strong J/4- Stevens I/15- Lake J/20- Palmer J/21- Mbemba R/	1	04:14	1	02:19	01:55	0-5	-5	1	1	1	0	0.0000
1- Scott J/3- Strong J/4- Stevens I/12- Cartier P/15- Lake J/	1	02:19	1	00:38	01:41	0-1	-1	2	0	1	0	0.0000
1- Scott J/2- Jackson T/3- Strong J/12- Cartier P/15- Lake J/	1	00:38	1	00:08	00:29	0-0	0	1	0	0	0	0.0000
1- Scott J/3- Strong J/10- Clifford N/12- Cartier P/15- Lake J/	1	00:08	2	20:00	00:08	0-0	0	1	0	0	0	0.0000
1- Scott J/3- Strong J/4- Stevens I/10- Clifford N/12- Cartier P/	2	20:00	2	18:12	01:48	4-2	2	2	0	1	1	1.3333
1- Scott J/2- Jackson T/3- Strong J/4- Stevens I/12- Cartier P/	2	18:12	2	16:16	01:56	1-4	-3	5	1	2	0	0.2907
1- Scott J/2- Jackson T/4- Stevens I/12- Cartier P/15- Lake J/	2	16:16	2	16:16	00:00	1-0	1	0	0	0	0	2.2727
1- Scott J/2- Jackson T/4- Stevens I/15- Lake J/20- Palmer J/	2	16:16	2	13:09	03:07	5-9	-4	1	0	0	1	1.0000
4- Stevens I/10- Clifford N/12- Cartier P/15- Lake J/20- Palmer J/	2	13:09	2	09:30	03:39	4-7	-3	4	0	2	1	0.6667
1- Scott J/3- Strong J/4- Stevens I/10- Clifford N/20- Palmer J/	2	09:30	2	08:03	01:27	4-3	1	1	1	1	1	1.3333
1- Scott J/3- Strong J/4- Stevens I/10- Clifford N/21- Mbemba R/	2	08:03	2	08:03	00:00	0-0	0	0	0	0	0	0.0000
0- Evans K/1- Scott J/3- Strong J/10- Clifford N/21- Mbemba R/	2	08:03	2	07:11	00:52	0-0	0	1	0	0	0	0.0000
1- Scott J/4- Stevens I/10- Clifford N/15- Lake J/21- Mbemba R/	2	07:11	2	06:12	00:59	3-1	2	3	0	0	1	3.0000
1- Scott J/4- Stevens I/10- Clifford N/12- Cartier P/15- Lake J/	2	06:12	2	01:30	04:42	9-8	1	3	1	2	2	1.1250
1- Scott J/4- Stevens I/10- Clifford N/15- Lake J/20- Palmer J/	2	01:30	2	01:08	00:22	3-1	2	3	0	0	1	3.4091
1- Scott J/2- Jackson T/3- Strong J/15- Lake J/20- Palmer J/	2	01:08	2	01:04	00:04	0-0	0	0	0	0	0	0.0000
1- Scott J/4- Stevens I/10- Clifford N/15- Lake J/20- Palmer J/	2	01:04	2	00:00	01:04	2-6	-4	1	0	0	1	0.6667



**Colorado St. at New Mexico**

03/15/24 Thomas & Mack Center, Las Vegas  
2023-24 Men's Basketball

**Game Time:** 9:00 PM  
**Game Duration:** 1:59  
**Attendance:** 13,213

**Officials:** Michael Reed, Michael Irving, Nate Harris

**New Mexico**

Lineup	Quarter On	Time On	Quarter Off	Time Off	Time on Court	Score	Score Diff	Reb	Stl	Tov	Ass	PPP
2- Dent D/ 5- Mashburn, Jr. J/ 10- House J/ 15- Toppin J/ 23- Joseph N/	1	20:00	1	14:33	05:27	13-5	8	4	1	1	1	1.4444
0- Baker Jr. J/ 5- Mashburn, Jr. J/ 10- House J/ 15- Toppin J/ 23- Joseph N/	1	14:33	1	12:56	01:37	2-4	-2	0	0	0	0	1.0000
0- Baker Jr. J/ 5- Mashburn, Jr. J/ 10- House J/ 22- Amzil M/ 23- Joseph N/	1	12:56	1	10:59	01:57	2-2	0	4	0	0	1	0.5000
0- Baker Jr. J/ 2- Dent D/ 3- Washington T/ 15- Toppin J/ 22- Amzil M/	1	10:59	1	10:17	00:42	0-2	-2	0	0	1	0	0.0000
0- Baker Jr. J/ 3- Washington T/ 10- House J/ 15- Toppin J/ 22- Amzil M/	1	10:17	1	09:25	00:52	2-2	0	1	0	0	0	2.2727
3- Washington T/ 5- Mashburn, Jr. J/ 10- House J/ 15- Toppin J/ 22- Amzil M/	1	09:25	1	07:08	02:17	4-8	-4	0	0	0	2	1.3333
3- Washington T/ 5- Mashburn, Jr. J/ 10- House J/ 15- Toppin J/ 23- Joseph N/	1	07:08	1	04:14	02:54	4-2	2	5	0	0	1	1.0000
0- Baker Jr. J/ 5- Mashburn, Jr. J/ 10- House J/ 22- Amzil M/ 23- Joseph N/	1	04:14	1	00:38	03:36	6-0	6	5	1	2	1	0.8721
0- Baker Jr. J/ 5- Mashburn, Jr. J/ 10- House J/ 15- Toppin J/ 22- Amzil M/	1	00:38	2	20:00	00:38	0-0	0	0	0	0	0	0.0000
2- Dent D/ 5- Mashburn, Jr. J/ 10- House J/ 15- Toppin J/ 23- Joseph N/	2	20:00	2	16:16	03:44	6-5	1	4	1	1	2	1.0000
2- Dent D/ 5- Mashburn, Jr. J/ 10- House J/ 22- Amzil M/ 23- Joseph N/	2	16:16	2	15:31	00:45	0-1	-1	2	0	0	0	0.0000
2- Dent D/ 5- Mashburn, Jr. J/ 10- House J/ 15- Toppin J/ 22- Amzil M/	2	15:31	2	14:59	00:32	2-0	2	1	0	0	0	2.2727
0- Baker Jr. J/ 2- Dent D/ 10- House J/ 15- Toppin J/ 22- Amzil M/	2	14:59	2	11:59	03:00	10-7	3	2	1	1	4	1.6667
0- Baker Jr. J/ 2- Dent D/ 5- Mashburn, Jr. J/ 15- Toppin J/ 22- Amzil M/	2	11:59	2	09:30	02:29	4-2	2	2	0	0	2	1.3333
0- Baker Jr. J/ 2- Dent D/ 5- Mashburn, Jr. J/ 22- Amzil M/ 23- Joseph N/	2	09:30	2	08:03	01:27	3-4	-1	1	1	1	1	1.0000
2- Dent D/ 5- Mashburn, Jr. J/ 10- House J/ 22- Amzil M/ 23- Joseph N/	2	08:03	2	06:27	01:36	1-3	-2	2	0	0	0	0.4098
0- Baker Jr. J/ 2- Dent D/ 10- House J/ 22- Amzil M/ 23- Joseph N/	2	06:27	2	06:12	00:15	0-0	0	0	0	0	0	0.0000
0- Baker Jr. J/ 2- Dent D/ 5- Mashburn, Jr. J/ 22- Amzil M/ 23- Joseph N/	2	06:12	2	04:46	01:26	2-7	-5	0	0	1	0	1.0000
0- Baker Jr. J/ 2- Dent D/ 10- House J/ 15- Toppin J/ 23- Joseph N/	2	04:46	2	01:24	03:22	7-2	5	4	1	0	1	1.1905
0- Baker Jr. J/ 2- Dent D/ 10- House J/ 15- Toppin J/ 22- Amzil M/	2	01:24	2	01:08	00:16	0-3	-3	0	0	0	0	0.0000
2- Dent D/ 5- Mashburn, Jr. J/ 10- House J/ 15- Toppin J/ 22- Amzil M/	2	01:08	2	01:04	00:04	0-0	0	0	0	0	0	0.0000
0- Baker Jr. J/ 2- Dent D/ 10- House J/ 15- Toppin J/ 23- Joseph N/	2	01:04	2	00:00	01:04	6-2	4	2	0	1	0	1.6484



**Officials:** Michael Reed, Michael Irving, Nate Harris

**Colorado St.**

Lineup	Time	Score	Score Diff	Pts/Min	Reb	Stl	Tov	Ass	PPP
1- Scott J/ 3- Strong J/ 4- Stevens I/ 10- Clifford N/ 12- Cartier P/	07:24	6-15	-9	0.8108	7	1	5	2	0.4615
1- Scott J/ 4- Stevens I/ 10- Clifford N/ 12- Cartier P/ 15- Lake J/	04:42	10-8	2	2.1277	3	1	2	2	1.1848
1- Scott J/ 4- Stevens I/ 10- Clifford N/ 15- Lake J/ 20- Palmer J/	04:05	14-11	3	3.4286	8	0	0	4	1.9126
4- Stevens I/ 10- Clifford N/ 12- Cartier P/ 15- Lake J/ 20- Palmer J/	03:57	6-9	-3	1.5190	4	0	2	1	0.8571
1- Scott J/ 3- Strong J/ 4- Stevens I/ 12- Cartier P/ 15- Lake J/	03:24	0-3	-3	0.0000	3	0	1	0	0.0000
1- Scott J/ 2- Jackson T/ 4- Stevens I/ 15- Lake J/ 20- Palmer J/	03:07	5-9	-4	1.6043	1	0	0	1	1.0000
2- Jackson T/ 4- Stevens I/ 15- Lake J/ 20- Palmer J/ 21- Mbemba R/	02:35	2-2	0	0.7742	3	1	0	1	0.4000
0- Evans K/ 1- Scott J/ 10- Clifford N/ 12- Cartier P/ 15- Lake J/	02:17	7-4	3	3.0657	2	0	0	1	2.3333
1- Scott J/ 2- Jackson T/ 3- Strong J/ 4- Stevens I/ 12- Cartier P/	01:56	1-4	-3	0.5172	5	1	2	0	0.2907
3- Strong J/ 4- Stevens I/ 15- Lake J/ 20- Palmer J/ 21- Mbemba R/	01:55	0-5	-5	0.0000	1	1	1	0	0.0000
1- Scott J/ 3- Strong J/ 4- Stevens I/ 10- Clifford N/ 20- Palmer J/	01:27	4-3	1	2.7586	1	1	1	1	1.3333
1- Scott J/ 4- Stevens I/ 10- Clifford N/ 15- Lake J/ 21- Mbemba R/	00:59	3-1	2	3.0508	3	0	0	1	3.0000
0- Evans K/ 1- Scott J/ 3- Strong J/ 10- Clifford N/ 21- Mbemba R/	00:52	0-0	0	0.0000	1	0	0	0	0.0000
2- Jackson T/ 4- Stevens I/ 12- Cartier P/ 15- Lake J/ 20- Palmer J/	00:38	2-0	2	3.1579	0	0	0	0	1.0638
1- Scott J/ 2- Jackson T/ 3- Strong J/ 12- Cartier P/ 15- Lake J/	00:29	0-0	0	0.0000	1	0	0	0	0.0000
1- Scott J/ 3- Strong J/ 10- Clifford N/ 12- Cartier P/ 15- Lake J/	00:08	0-0	0	0.0000	1	0	0	0	0.0000
1- Scott J/ 2- Jackson T/ 3- Strong J/ 15- Lake J/ 20- Palmer J/	00:04	0-0	0	0.0000	0	0	0	0	0.0000
1- Scott J/ 2- Jackson T/ 4- Stevens I/ 12- Cartier P/ 15- Lake J/	00:00	1-0	1	∞	0	0	0	0	2.2727
1- Scott J/ 3- Strong J/ 4- Stevens I/ 10- Clifford N/ 21- Mbemba R/	00:00	0-0	0	NaN	0	0	0	0	0.0000



**Officials:** Michael Reed, Michael Irving, Nate Harris

**New Mexico**

Lineup	Time	Score	Score Diff	Pts/Min	Reb	Stl	Tov	Ass	PPP
2- Dent D/ 5- Mashburn, Jr. J/ 10- House J/ 15- Toppin J/ 23- Joseph N/	09:11	19-10	9	2.0690	8	2	2	3	1.2667
0- Baker Jr. J/ 5- Mashburn, Jr. J/ 10- House J/ 22- Amzil M/ 23- Joseph N/	05:33	8-2	6	1.4414	9	1	2	2	0.7353
0- Baker Jr. J/ 2- Dent D/ 10- House J/ 15- Toppin J/ 23- Joseph N/	04:26	13-4	9	2.9323	6	1	1	1	1.3655
0- Baker Jr. J/ 2- Dent D/ 10- House J/ 15- Toppin J/ 22- Amzil M/	03:16	10-10	0	3.0612	2	1	1	4	1.6667
3- Washington T/ 5- Mashburn, Jr. J/ 10- House J/ 15- Toppin J/ 23- Joseph N/	02:54	4-2	2	1.3793	5	0	0	1	1.0000
0- Baker Jr. J/ 2- Dent D/ 5- Mashburn, Jr. J/ 22- Amzil M/ 23- Joseph N/	02:53	5-11	-6	1.7341	1	1	2	1	1.0000
0- Baker Jr. J/ 2- Dent D/ 5- Mashburn, Jr. J/ 15- Toppin J/ 22- Amzil M/	02:29	4-2	2	1.6107	2	0	0	2	1.3333
2- Dent D/ 5- Mashburn, Jr. J/ 10- House J/ 22- Amzil M/ 23- Joseph N/	02:21	1-4	-3	0.4255	4	0	0	0	0.2907
3- Washington T/ 5- Mashburn, Jr. J/ 10- House J/ 15- Toppin J/ 22- Amzil M/	02:17	4-8	-4	1.7518	0	0	0	2	1.3333
0- Baker Jr. J/ 5- Mashburn, Jr. J/ 10- House J/ 15- Toppin J/ 23- Joseph N/	01:37	2-4	-2	1.2371	0	0	0	0	1.0000
0- Baker Jr. J/ 3- Washington T/ 10- House J/ 15- Toppin J/ 22- Amzil M/	00:52	2-2	0	2.3077	1	0	0	0	2.2727
0- Baker Jr. J/ 2- Dent D/ 3- Washington T/ 15- Toppin J/ 22- Amzil M/	00:42	0-2	-2	0.0000	0	0	1	0	0.0000
0- Baker Jr. J/ 5- Mashburn, Jr. J/ 10- House J/ 15- Toppin J/ 22- Amzil M/	00:38	0-0	0	0.0000	0	0	0	0	0.0000
2- Dent D/ 5- Mashburn, Jr. J/ 10- House J/ 15- Toppin J/ 22- Amzil M/	00:36	2-0	2	3.3333	1	0	0	0	2.2727
0- Baker Jr. J/ 2- Dent D/ 10- House J/ 22- Amzil M/ 23- Joseph N/	00:15	0-0	0	0.0000	0	0	0	0	0.0000