



BOISE STATE™

WOMEN'S BASKETBALL



@BroncoSportsWBB



@boisestatewbb



Boise State Women's Basketball

GAME INFORMATION

Date March 10 (Sun.)
Time 8 p.m. MT
Location Las Vegas, Nev.
Facility Thomas & Mack Center
Watch MW Network
Listen KBOI 670 AM
History Boise State (34-12)

THE MATCHUP



THE STATS

5-24 **RECORD** 19-12
 2-16 **MW RECORD** 10-8
 2-13 **HOME** 13-3
 3-11 **ROAD** 5-7
 0-0 **NEUTRAL** 1-2
 56.4 **SCORING OFFENSE** 63.3
 73.6 **SCORING DEFENSE** 57.9
 -17.2 **SCORING MARGIN** +5.3
 36.9% **FG% OFFENSE** 39.6%
 43.2% **FG% DEFENSE** 36.5%
 28.6% **3FG % OFFENSE** 34.4%
 33.4% **3FG % DEFENSE** 28.8%
 4.8 **3FG/GAME** 6.7
 70.9% **FT %** 67.3%
 34.3 **REBOUNDS** 39.9
 -4.7 **REBOUND MARGIN** +4.6
 8.9 **ASSISTS** 14.1
 18.2 **TURNOVERS** 15.1
 6.6 **STEALS** 6.8
 3.5 **BLOCKS** 6.2

TEAM LEADERS

Points Per Game **Points Per Game**
 Cheyenne Stubbs 15.9 Natalie Pasco 13.4
Rebounds Per Game **Rebounds Per Game**
 Cheyenne Stubbs 4.0 Abby Muse 8.6
Assists Per Game **Assists Per Game**
 Cheyenne Stubbs 1.9 Mary Kay Naro 4.4
Steals Per Game **Steals Per Game**
 Cheyenne Stubbs 1.7 Abby Muse 1.2
Blocks Per Game **Blocks Per Game**
 Gracie Johnson 1.7 Abby Muse 2.8

BRONCO QUICK FACTS & PROGRAM HISTORY



Boise State Broncos (19-12, 10-8 MW)
Head Coach Gordy Presnell
Year at Boise State 19th
Record at Boise State 353-239
Career Record 749-366
Location Boise, Idaho
Enrollment 26,162
Founded 1932
Conference Mountain West
First Year of WBB 1970-71
NCAA Appearances 7
Arena ExtraMile Arena
Capacity 12,400

GAME NOTES

- The win over Fresno State on Feb. 24 was the 10th MW win of the season for the Broncos. That is the ninth time in 10 seasons the Broncos have won 10+ MW games, the most of any team in the league.
- Boise State tied for fourth in the Mountain West standings.
- This matchup marks the second-straight season the Broncos and Aggies meet up in the 6 vs. 11 matchup. The Broncos won last year's contest 66-58 behind a game-high 20 points from Mya Hansen.
- With a 17-6 record in the MW Tournament, Boise State holds the best winning percentage at the MW Tournament.
- Boise State has won five MW Tournament Championships, tied with New Mexico for the most in the MW.
- Gordy Presnell is chasing his 750th win as a collegiate head coach. He would become the 30th women's basketball head coach to reach the milestone, and the 15th who is still active. Presnell holds a 749-366 career record.
- Gordy Presnell is tied for second in conference history with 18 wins at the MW tournament. He is tied with Elaine Elliot (Utah, 1999-2010) and trails Don Flanagan (New Mexico, 1999-2011), who has 21 wins.
- The Broncos are ranked second nationally with 6.2 blocks per game, trailing only South Carolina's 8.1.

2023-24 SCHEDULE

Date	Opponent	Result
Nov. 6	COLLEGE OF IDAHO	W 77-35
Nov. 13	WEBER STATE	W 76-47
Nov. 15	UC RIVERSIDE	W 63-55
Nov. 20	PEPPERDINE	W 63-47
Nov. 24	vs. Santa Clara#	L 62-52
Nov. 25	vs. Rutgers#	W 68-65
Nov. 29	UC DAVIS	W 70-53
Dec. 3	Eastern Washington	L 64-43
Dec. 6	CAL STATE BAKERSFIELD	W 87-66
Dec. 9	BYU	L 65-50
Dec. 12	ROCKY MOUNTAIN COLLEGE	W 67-46
Dec. 20	vs. UC San Diego%	L 62-56
Dec. 21	vs. San Diego%	W 62-54
Dec. 30	Wyoming*	L 61-47
Jan. 3	NEVADA*	L 58-57
Jan. 6	New Mexico*	W 64-56
Jan. 13	SAN DIEGO STATE*	W 68-59
Jan. 17	San Jose State*	W 68-64
Jan. 20	UTAH STATE*	W 76-41
Jan. 24	UNLV*	L 84-63
Jan. 27	San Diego State*	L 79-54
Jan. 31	Fresno State*	W 60-50
Feb. 7	SAN JOSE STATE*	W 73-42
Feb. 10	WYOMING*	W 56-42
Feb. 14	Utah State*	W 73-57
Feb. 17	Nevada*	L 68-65 (OT)
Feb. 21	NEW MEXICO*	W 58-55
Feb. 24	FRESNO STATE*	W 70-65
Feb. 28	UNLV*	L 63-57
March 2	AIR FORCE*	L 67-66
March 5	Colorado State*	L 64-50
March 10	Utah State	8 p.m.
March 11	MW Championship (QF)	TBD
March 12	MW Championship (SF)	TBD
March 13	MW Championship Game	TBD

Home Matches in **BOLD/CAPS**
 # South Point Classic
 % San Diego Classic
 * MW Game
 All Times Mountain

PROGRAM HISTORY

Years of Women's Basketball.....	53
First Year of Women's Basketball.....	1970-71
All-Time Program Record.....	830-651 (.561)
All-Time Head Coaches.....	6
Winning Seasons.....	30
.500 Seasons.....	3
Losing Seasons.....	20
20+ Win Seasons.....	10

Conference Games Only

All-Time Conf. Record.....	384-345 (.527)
All-Time Tour. Record.....	31-25 (.554)
Winning Seasons.....	23
.500 Seasons.....	6
Losing Seasons.....	17
Regular Season Titles.....	6
1992.....	Big Sky
1994.....	Big Sky
2007.....	WAC
2008.....	WAC
2018.....	MW
2019.....	MW
Regular Season Division Titles.....	2
1978.....	NWBL, Mountain Division
1998.....	Big West, Eastern Division
Tournament Titles.....	6
2007.....	WAC
2015.....	MW
2017.....	MW
2018.....	MW
2019.....	MW
2020.....	MW

Conference Membership

NW Women's Basketball League.....	1977-82
Mountain West Athletic Conference.....	1982-88
Big Sky Conference.....	1988-95
Big West Conference.....	1996-01
Western Athletic Conference.....	2001-10
Mountain West Conference.....	2011-present

National Postseason Appearances

NCAA Tournament App. (Record).....	6 (0-6)
1994.....	at Washington, L, 89-61
2007.....	vs. G.W., L, 76-67
2015.....	at Tennessee, L, 72-61
2017.....	at UCLA, L, 83-56
2018.....	at Louisville, L, 74-42
2019.....	at Oregon State, L, 75-80 (OT)
2020.....	<i>Canceled (Covid-19)</i>
WNIT Tournament App. (Record).....	2 (1-2)
1998.....	at LSU, L 58-38
2008.....	Idaho State, W 77-54 (1st Rd.)
at TCU, L 85-56 (2nd Rd.)
WBI Tournament App. (Record).....	1 (1-1)
2014.....	at GCU, W 52-51 (1st Rd.)
at SFA, L 80-59 (2nd Rd.)
AIAW Tournament App. (Record).....	1 (0-2)
1975.....	vs. Wayland Baptist, L 93-37
vs. Kansas State, L 65-37

GAME NOTES (CONTINUED)

- Abby Muse enters the contest ranked fourth nationally in total blocks (87) and ninth in blocks per game (2.8).
- Boise State leads the league in scoring defense (57.9 points per game), field goal percentage defense (36.5%) and 3-point field goal percentage defense (28.8%).
- Boise State went 2-0 against the Aggies in the regular season, winning 76-41 in Boise and 73-57 in Logan.
- Boise State leads the all-time series against the Aggies 34-12, including winning eight of the last nine contests.
- Abby Muse is the program's all-time time leader with 258 career blocks, over 100 more than second place Stephanie Block (142).
- Abby Muse is currently in second place in program history with 87 blocks on the year. The senior is chasing her own program-record of 93 blocks that she set last season.
- Abby Muse enters the MW Tournament tied for fourth in program history with 265 rebounds in a single season. Mallory McGwire, who pulled down 266 rebounds in the 2019-20 year, sits ahead of Muse in third place.
- Mary Kay Naro moved into second place all-time in program history with 459 career assists. The senior passed graduate assistant Jayde Christopher (2018-20), who dished out 457 career assists.
- Mary Kay Naro is one of two Broncos to dish out 100+ assists in four-straight seasons. The other is career assist leader Yaiza Rodriguez (2013-17), who recorded 616 career dimes.
- Abby Muse is currently in second place in program history with 895 career rebounds. Karla Meier is the program leader with 1025.
- Abby Muse is fourth place all-time in MW history with 258 career blocks. The senior trails Paris Johnson (San Diego State, 2007-11), who blocked 267 shots.
- Abby Muse is second in MW history with 149 career blocks in league contests. She trails Bego Faz Davalos (Fresno State, 2014-17), who blocked 199 shots in MW games.
- The Broncos have blocked 193 shots on the year, the second-most in a single season in program history. Boise State set the single-season block record last season with 194 blocks.
- Mary Kay Naro is ranked third in the league in assists per game (4.4) and assist-to-turnover ratio (2.2).
- Natalie Pasco leads the league in total 3-pointers (75), and is second in 3-pointers per game (2.4) and 3-point % (39.7%).
- Gordy Presnell enters the contest with 241 total wins since joining the MW, the fourth-most in conference history and the most of any active MW coach. He trails Don Flanagan (New Mexico), who has 258 total victories.
- Gordy Presnell is in second place in conference history with 134 MW victories. Presnell trails Joe Legerski (Wyoming, 2003-19), who holds the conference record with 159 league victories.
- Gordy Presnell has taken the Broncos to five NCAA National Tournaments (2007, 2015, 2017, 2018, 2019, 2020). The team qualified for a sixth tournament in 2020 but the tournament was canceled due to Covid-19.
- Gordy Presnell is chasing his 20th win of the season, which would mark the eighth season at Boise State where he picked up 20 wins in a year.
- Gordy Presnell picked up his 350th victory as the Broncos' head coach with the victory over Wyoming on Feb. 10. Presnell holds a 353-239 record as Boise State's head coach.
- Gordy Presnell celebrated his 200th home win as the head coach of the Broncos, Nov. 29, with the win over UC Davis on Nov. 29. Presnell currently boasts a 208-82 home record.
- The Broncos have won 13 games at home this season, marking the 14th season under head coach Gordy Presnell that the Broncos have won 10+ games at home.
- Natalie Pasco is currently tied for seventh in program history with 75 made 3-pointers on the year.
- Mary Kay Naro is eighth in the program's single-season record book with 128 assists.
- Mary Kay Naro enters Sunday's matchup tied for 10th in program history with 82 career blocks.
- Elodie Lalotte enters Sunday's contest with 636 rebounds, good for 11th place in program history. Tami Stuart (1981-85) sits in 10th place with 645 boards.
- The Broncos have won six games by 20+ points on the season.

GAME NOTES (CONTINUED)

- Boise State has made 207 3-pointers on the year, the eighth-most in program history.
- Three Broncos sit in the Boise State record books for career 3-pointers. Natalie Pasco (121) is 14th in program history, Dani Bayes (94) is 19th while Mary Kay Naro (78) is 25th.
- The Broncos have lost only one player to the transfer portal over the past two seasons.
- Boise State retained 89.7% of its scoring from last season, the most in the MW. The team returns 14 letterwinners, including all five starters.
- The Broncos have outscored their opponents 503-362 in the opening quarter of the season, including a mark of 272-212 in MW play.
- Boise State has led for 35+ minutes in 14 of the team's 19 wins this season.
- The Broncos are 16-6 on the season when they outrebound their opponent and 7-1 on the year when they outrebound their opponent by 10 or more.
- Boise State is 13-3 on the season when three or more players reach double figures.
- Boise State has had two players hit five or more 3-pointers in a game on the year. Natalie Pasco has done so five times, while Dani Bayes drained five against New Mexico on Jan. 6.
- Four Broncos have eclipsed the 20-point threshold this season. Natalie Pasco has done it five times, while Dani Bayes, Mya Hansen and Tatum Thompson have each done so once.
- Natalie Pasco has led the Broncos in scoring in 19 of the team's 31 games this season.
- The Broncos have had eight different single-game leading scorers.
- Boise State has held seven opponents to 50 points or less this season. Four of those games have come against MW opponents.
- The Broncos are 5-0 on the season when both Mya Hansen and Mary Kay Naro each dish out four or more assists.
- Boise State is 8-5 in single digit games.
- Boise State is ranked 22nd nationally in field goal percentage defense, holding teams to 36.5% shooting.
- Natalie Pasco is ranked 30th nationally in total 3-pointers (75).
- Abby Muse is ranked first in the MW with 265 total rebounds and second with 8.5 rebounds per game.
- Natalie Pasco is ranked ninth in the MW in scoring (13.4 points per game).
- The Broncos are third in the MW in scoring margin (+5.3).
- Boise State is third among MW teams in 3-point percentage, shooting 34.4% from beyond the arc.
- The Broncos are ranked second in the league with a +4.7 rebounding margin and third in rebounds per game (39.9).
- Boise State is third in the league with 14.1 assists per game.
- The Broncos get 21.8 points from their bench, the third-highest mark in the league.
- Trista Hull is sixth among MW players with 1.3 blocks per game.
- Assistant coach Heather Sower begins her 22nd season as an assistant coach for the Broncos. Cariann Ramirez enters her 14th season with the program and seventh as an assistant coach. Both coaches previously played for the Broncos.
- Boise State's roster consists of four seniors, one redshirt-senior, five juniors, four sophomores and one redshirt-sophomore.
- Of the 12 players from the U.S., Boise State has players from six different states - Washington (4), Oregon (3), California (2), Idaho (1), Montana (1) and Texas (1).
- The Broncos have three international players - Australia (1), France (1) and New Zealand (1).
- The Broncos' lone newcomer is Alyssa Christensen, who joins the program after transferring from the College of Southern Idaho. The New Plymouth, Idaho, native was named to the Region 18 First Team during the 2022-23 season after leading the Golden Eagles to a 31-3 record and a trip to the NJCAA DI Women's Basketball Championship Semifinal.
- Tatum Thompson was named the Mountain West Player of the Week on Feb. 5. The sophomore is the first Bronco to win the award since Elodie Lalotte on Nov. 21, 2022.

2022-23 HONORS

- MW Defensive Player of the Year**Abby Muse
- All-MW Honorable Mention**Elodie Lalotte
..... Abby Muse
- All-MW Freshman Team**Dani Bayes
..... Natalie Pasco
- MW All-Defensive Team**
Year at Boise StateAbby Muse
- MW Player of the Week** Elodie Lalotte (Nov. 21)
- MW Freshman of the Week**Natalie Pasco (Nov. 21)
..... Mya Hansen (Dec. 5)
..... Natalie Pasco (Dec. 26)
..... Dani Bayes (Jan. 2)
..... Natalie Pasco (Feb. 6)
..... Dani Bayes (Jan. 23)
..... Natalie Pasco (Feb. 20)
- CSC Academic All-District Team** Abby Muse
..... Mary Kay Naro

2023-24 BRONCO STAFF

- Head Coach**Gordy Presnell
Year at Boise State 19th
Record at Boise State..... 353-239 (.596)
Career Record 749-366 (.672)
Alma MaterNorthwest Nazarene
- Assistant Coach** Heather Sower
Year at Boise State 22nd
Alma Mater Boise State
- Assistant Coach** Cariann Ramirez
Year at Boise State Eighth (coach)
..... 14th (overall)
Alma Mater Boise State
- Assistant Coach** Mike Petrino
Year at Boise State Third
Alma Mater Montana State Billings
- Graduate Assistant** Rachel Bowers
Year at Boise State Second
- Graduate Assistant** Jayde Christopher
Year at Boise State Second
- Director of Ops**Bree Blanding
Year at Boise State First
Alma Mater Coastal Carolina
- Sports Performance**Lauren Sale
- Athletic Trainer** Matt Schofield

GENERAL INFO

- Name.....Boise State University
- Location.....Boise, Idaho
- Founded.....1932
- Enrollment.....26,727
- Nickname.....Broncos
- Colors.....Blue and Orange
- Affiliation.....NCAA Division I
- Conference.....Mountain West
- President.....Dr. Marlene Tromp
- Director of Athletics.....Jeremiah Dickey
- Arena Name.....ExtraMile Arena
- Elevation (campus level).....2,704 Feet
- Opened.....Fall 1982
- Capacity.....12,400

YEAR BY YEAR

1987-88	Seattle Pacific	16-11	13-10 (5th)
1988-89	Seattle Pacific	24-6	17-5 (4th)
1989-90	Seattle Pacific	21-9	17-7 (4th)
1990-91	Seattle Pacific	18-11	7-9 (6th)
1991-92	Seattle Pacific	17-13	5-5 (4th)
1992-93	Seattle Pacific	17-10	7-3 (2nd)
1993-94	Seattle Pacific	17-10	6-4 (3rd)
1994-95	Seattle Pacific	21-8	7-3 (2nd)
1995-96	Seattle Pacific	17-10	3-7 (4th)
1996-97	Seattle Pacific	26-3	7-1 (1st)
1997-98	Seattle Pacific	27-3	7-1 (1st)
1998-99	Seattle Pacific	19-10	11-7 (4th)
1999-00	Seattle Pacific	21-7	13-5 (3rd)
2000-01	Seattle Pacific	24-5	18-4 (1st)
2001-02	Seattle Pacific	22-6	14-4 (2nd)
2002-03	Seattle Pacific	29-1	18-0 (1st)
2003-04	Seattle Pacific	30-1	18-0 (1st)
2004-05	Seattle Pacific	30-3	17-1 (1st)
2005-06	Boise State	15-15	6-10 (6th)
2006-07	Boise State	24-9	12-4 (T-1st)
2007-08	Boise State	24-8	14-2 (1st)
2008-09	Boise State	16-15	9-7 (T-5th)
2009-10	Boise State	19-12	8-8 (T-4th)
2010-11	Boise State	12-19	3-13 (8th)
2011-12	Boise State	15-16	5-9 (6th)
2012-13	Boise State	11-19	4-12 (7th)
2013-14	Boise State	18-14	12-6 (T-3rd)
2014-15	Boise State	22-11	11-7 (4th)
2015-16	Boise State	19-11	12-6 (3rd)
2016-17	Boise State	25-8	12-6 (3rd)
2017-18	Boise State	23-10	14-4 (T-1st)
2018-19	Boise State	28-5	16-2 (1st)
2019-20	Boise State	24-9	13-5 (2nd)
2020-21	Boise State	13-8	10-8 (6th)
2021-22	Boise State	8-21	4-13 (10th)
2022-23	Boise State	17-16	11-7 (6th)
Totals	Record	Pct.	
at Seattle Pacific	396-127	.757	
at Boise State	353-239	.596	
Overall (29 Winning Seasons)	749-365	.672	
Postseason	29-19	.604	

HIGHLIGHTS

NCAA Div. II Winningest Coaches All-Time

By Percentage	T-10th	75.7%
By Victories	21st	396

(as of his departure in summer of 2005)

COACH OF THE YEAR HONORS

TOTAL	17
WBCA National Division II	2
WBCA West Region Division I	1
WBCA West Region Division II	4
Western Athletic Conference (WAC)	1
Mountain West (MW)	1
Other Conference COY	8

CONFERENCE CHAMPIONSHIPS

TOTAL	16
Mountain West	7
Western Athletic (WAC)	2
Pacific West	2
Great Northwest Athletic (GNAC)	5

NATIONAL POSTSEASON APPEARANCES

TOTAL	21
NCAA Division I Tournament	6
First Round	5
WNIT	1
Second Round	1
WBI	1
Second Round	1
NCAA Division II Tournament	10
Reached 2nd Round	7
Reached Sweet 16	6
Reached Elite Eight	3
Reached Final (runner-up)	1
NAIA Tournament	3
Reached Region 2nd Round	2

Gordy PRESNELL

Boise State Head Coach

19th Season at Boise State; 37th Overall

Alma Mater: Northwest Nazarene, 1983;
Seattle Pacific, 1989

Hometown: Lapwai, Idaho



BOISE STATE TENURE (2005-present)

Nineteen years ago Gordy Presnell returned to his home state to become the sixth head coach in Boise State University's women's basketball program history. He brought with him a mild and laid-back demeanor, 18 years of head-coaching experience and a long record of success. Presnell currently ranks first in Bronco history for victories by a coach. The 2023-24 season will mark his 37th as a collegiate head coach with a career record of 730-354 (.673).

With 730 career victories through the 2022-23 campaign, Presnell currently sits at 34th on the all-time victories list of NCAA (all levels) wins and 10th among active coaches. He coached the 1,000th game of his illustrious career in the 2020-21 season opener and recorded his 700th career win on Feb. 5, 2021 as Boise State defeated Nevada 73-63 at ExtraMile Arena.

Presnell's Bronco teams have qualified for the NCAA Tournament on six occasions (2007, 2015, 2017-20) and nine times have qualified for the postseason. Under his watch, Boise State has also won four regular-season titles (2007-08 WAC; 2018-19 Mountain West) and six conference tournament titles (2007 WAC; 2015, 2017-20 Mountain West).

Boise State's 80-76 overtime win over Fresno State in the 2020 Mountain West Basketball Championship Game made the Broncos the first program in conference history to win four-straight tournaments (2017-20), and, with five tournament titles (2015, 2017-20), tied the Broncos with New Mexico for the most all-time.

Presnell, the 2018-19 Mountain West Coach of the Year, has taken the Broncos to 198 victories over the past ten seasons, including 132 (regular season and conference tournament) against Mountain West competition. Boise State has won 10 or more conference games in nine of the past 10 seasons, the most of any team in the MW in that span.

After setting the program record for wins in a season with 25 in 2016-17, Presnell guided the Broncos to 23 wins in 2017-18 before establishing the new benchmark with 28 victories in 2018-19. The Broncos followed that with the program's fourth-straight 20-win season in 2019-20, going 24-9.

The program's recent run began in 2013-14, as the Broncos won 19 games and went to the Women's Basketball Invitational (WBI), the team's first postseason appearance since 2008. Since 2013-14, the Broncos have won at least 19 games six times, including five 20-win campaigns.

The first of those recent 20-win seasons came in 2014-15, when Presnell led the Broncos to a 22-11 mark, the Mountain West Tournament title, and the program's first NCAA Tournament appearance since 2007. In the first round, the Broncos, a 15-seed, fought valiantly at No. 2 Tennessee, trailing the Lady Volunteers by just five with under three minutes to play before falling 72-61.

Over this span, Presnell's players have earned 22 All-Mountain West selections, including 11 first-team honors. They have stepped up even more when the lights shine brightest, as Brooke Pahukoa (2015, 2017), Riley Lupfer (2018), Braydey Hodgins (2019), and A'Shanti Coleman (2020) have combined to capture five Mountain West Tournament MVPs.

Since Boise State joined the Mountain West in 2011-12, the Broncos, under Presnell, lead all conference schools with five NCAA Tournament bids. Presnell's teams have gone 124-85 (.593) in MW games and an impressive 197-79 (.722) at home in Boise, including a perfect 15-0 mark in 2007-08.

The Broncos have recorded 13 winning seasons over Presnell's

18-year tenure. After going 15-15 in his first season (2005-06), the Broncos recorded four-consecutive winning seasons, including a then-school-record 24 wins in both the 2006-07 (24-9) and 2007-08 (24-8) campaigns.

In 2006-07, Presnell led the Broncos to the program's first postseason appearance under his watch, and first since 1998. Boise State went 24-9 overall, winning the WAC regular-season and tournament titles to advance to the NCAA Tournament for just the second time in program history, and to the postseason for the first time since making the 1998 WNIT. For his coaching performance he was named the WAC and WBCA Division I Regional Coach of the Year.

Prior to taking over at Boise State, Presnell coached for 18 successful years at Seattle Pacific University in Washington. At SPU, he inherited a program that had not recorded a winning season in the previous nine years. He built the Falcons into a NCAA Division II national power, accumulating an overall record of 396 victories with 127 defeats (.757). Along the way his teams amassed an average of 22 wins per season while claiming seven conference championships, including four in his last five seasons. In addition, his teams were an impressive 221-29 (.884) at home in Broughman Pavilion, including five unbeaten home seasons.

On the national scene under Presnell, the Falcons advanced to nine-straight (1997-2005) and 10 of 11 NCAA Division II tournaments while he was in Seattle. Overall, Seattle Pacific made postseason appearances in 13 of his 18 years, 10 NCAA and three NAIA. Presnell's teams reached three NCAA Division II Elite Eights and advanced to the 2005 national title game.

At the time of his departure from Seattle Pacific in the summer of 2005, Presnell was ranked tied for 10th-place nationally among NCAA Division II coaches for win percentage (.757) and 21st for total victories.

In 36 years as a collegiate head coach Presnell has experienced 31 winning seasons and one at .500. His teams have won a combined 11 regular-season titles, seven at SPU and four at Boise State. In addition, he has guided 21 of his 36 squads to postseason national-tournament bids.

During his career he has been named conference coach of the year eight times, WBCA National Coach of the Year five times (four at NCAA Division II level and one at Division I), and the WBCA NCAA Division II National Coach of the Year twice. His coach of the year honors now total 16 in 36 years. In 2007, during the NCAA's 25th anniversary celebration for women's sports, coach Presnell was listed as one of the top coaches all-time in their publication "Women's Basketball Finest."

Presnell, a Lapwai, Idaho, native graduated from Northwest Nazarene in Nampa, Idaho, in 1983 with a B.A. in physical education. He continued his studies in physical education at Seattle Pacific, where he earned a master's degree in 1989. He and his wife, former SPU gymnast Susan Nolte, live in Meridian, Idaho. They have two children, a daughter, Jacquelyn, and a son, Ryder.

In 2008 he was honored by his alma mater as the "Outstanding Educator of the Year." While at Seattle Pacific he was asked to throw out the opening pitch at two Seattle Mariners games.

LAST TIME BOISE STATE...

Team

Scored 100+ points121, Multnomah, Nov. 7, 2022 (121-64 win)
 Scored 100+ points on the road112, at San Jose State, Jan. 24, 2018 (112-80 win)
 Scored 90+ points97, Evergreen State, Dec. 12, 2022 (97-31 win)
 Scored fewer than 50 points47, at Wyoming, Dec. 30, 2023 (61-47 loss)
 Scored fewer than 40 points38, Long Beach State, Nov. 13, 2021 (61-38 loss)
 Allowed 100+ points100, at New Mexico, Jan. 3, 2018 (100-83 loss)
 Allowed 90+ points92, at Fresno State, Jan. 21, 2021 (92-57 loss)
 Allowed fewer than 50 points43, Wyoming, Feb. 10, 2024 (56-42 win)
 Allowed fewer than 40 points35, College of Idaho, Nov. 6, 2023 (77-35 win)

Won by 20+ points+31, San Jose State, Feb. 7, 2024 (73-42 win)
 Won by 30+ points+31, San Jose State, Feb. 7, 2024 (73-42 win)
 Won by 40+ points+42, College of Idaho, Nov. 6, 2023 (77-35 win)
 Won by 50+ points+66, Evergreen State, Dec. 12, 2022 (97-31 win)
 Lost by 20+ points-25, at San Diego State, Jan. 27, 2024 (79-54 loss)
 Lost by 30+ points-44, at BYU, Nov. 20, 2021 (84-40 loss)

Won in overtimevs. Fresno State, March 4, 2020 (80-76 OT win)
 Won in double overtimeat Idaho State, Nov. 18, 2005 (91-89 DOT win)
 Lost in overtimeat Nevada, Feb. 17, 2024, 68-65 OT loss)
 Lost in double overtimeNevada, Dec. 5, 1986 (76-72 DOT loss)
 Was ranked in the Top 25No. 18, March 8, 1994

Defeated a top-25 team at homeNever
 Defeated a top-25 team on the roadNever
 Defeated a top-25 team at a neutral siteNever
 Lost to a top-25 teamat No. 24 UNLV, Feb. 28, 2024 (63-57 loss)
 Was ranked in the top-25No. 18, March 8, 1994

Had 40+ bench points45, Utah State, Jan. 20, 2024 (76-41 win)
 Had 50+ bench points52, Evergreen State, Dec. 12, 2022 (97-31 win)

Made 35+ field goals36, Evergreen State, Dec. 12, 2022 (97-31 win)
 Made 40+ field goals46, Multnomah, Nov. 7, 2022 (121-64 win)
 Shot 50% or better50.0% (22-44), at San Jose State, Jan. 17, 2024 (68-64 win)
 Shot 55% or better56.0% (28-50), Portland State, Nov. 20, 2022 (71-61 win)
 Shot 60% or better61.4% (35-57), at Louisville, Nov. 24, 2019 (98-82 loss)
 Shot 65% or better65.9% (27-41), vs. UTEP, March 11, 2003 (75-58 win)
 Shot less than 30%29.8% (17-57), at Colorado State, March 6, 2023 (59-52 loss)
 Opponent shot 50% or better50.0% (30-60), at San Diego State, Jan. 27, 2024 (79-54 loss)
 Opponent shot 55% or better56.3% (27-48), at Utah State, Feb. 23, 2019 (81-68 loss)
 Opponent shot less than 35%29.5% (18-61), at Utah State, Feb. 14, 2024 (73-57 win)
 Opponent shot less than 30%29.5% (18-61), at Utah State, Feb. 14, 2024 (73-57 win)
 Opponent shot less than 25%19.4% (12-62), College of Idaho, Nov. 6, 2023 (77-35 loss)

Made 10+ 3-point FG13, at Utah State, Feb. 14, 2024 (73-57 win)
 Made 15+ 3-point FG16, Multnomah, Nov. 7, 2022 (121-64 win)
 Shot 50% on 3pt (min. 10 att.)50.0% (12-24), Cal State Bakersfield, Dec. 6, 2023 (87-66 win)
 Shot 60% on 3pt (min. 10 att.)66.7% (8-12), San Diego State, Jan. 30, 2023 (62-57 win)
 Shot 65% on 3pt (min. 10 att.)66.7% (8-12), San Diego State, Jan. 30, 2023 (62-57 win)
 Made zero 3-point FG0-7, vs. North Dakota State, Nov. 25, 2022 (68-53 loss)
 Allowed 10+ 3-point FG10, at San Jose State, Jan. 17, 2024 (68-64 win)

Made 30+ free throws31, Southern Utah, Nov. 8, 2013 (90-86 loss)
 Made 35+ free throws42, Northwest Nazarene, Jan. 5, 1988, (117-41 win)
 Made 40+ free throws42, Northwest Nazarene, Jan. 5, 1988, (117-41 win)
 Shot 90% or better at the free throw line96.0% (24-25), at UC Davis, Nov. 17, 2022 (69-62 loss)
 Shot 100% at the free throw line (min. 20)Never

Had 50+ rebounds58, College of Idaho, Nov. 6, 2023 (77-35 win)
 Had a rebounding margin of +10 or better+11, Air Force, March 2, 2024 (67-66 loss)
 Had a rebounding margin of +20 or better+23, College of Idaho, Nov. 6, 2023 (77-35 win)
 Had a rebounding margin of +25 or better+38, Utah State, Feb. 18, 2023 (89-41 win)
 Had a rebounding margin of +30 or better+38, Utah State, Feb. 18, 2023 (89-41 win)
 Had a rebounding margin of +15 or worse-15, at San Diego State, Jan. 15, 2022 (80-63 win)
 Had a rebounding margin of -20 or worse21, at No. 5/4 Louisville, March 16, 2018 (74-42 loss)

Had 15+ steals16, San Jose State, Feb. 7, 2024 (73-42 win)
 Had 20+ steals22, Southern Oregon, Nov. 11, 2011 (93-55 win)
 Had 10+ blocked shots11, New Mexico, Feb. 21, 2024 (58-55 win)

Had 5 or fewer turnovers5, at Utah State, Feb. 14, 2024 (73-57 win)
 Had 8 or fewer turnovers5, at Utah State, Feb. 14, 2024 (73-57 win)
 Had 20+ turnovers21, at Fresno State, Jan. 31, 2024 (60-50 win)
 Had 25+ turnovers26, Air Force, Jan. 26, 2023 (60-55 win)
 Forced 20+ turnovers27, San Jose State, Feb. 7, 2024 (73-42 win)
 Forced 25+ turnovers27, San Jose State, Feb. 7, 2024 (73-42 win)
 Forced 30+ turnovers30, vs. Saint Francis, Dec. 15, 2018 (78-64 win)
 Had a turnover margin of +10 or better+11 (27-16), San Jose State, Feb. 7, 2024 (73-42 win)
 Had a turnover margin of +15 or better+16 (21-5), at Air Force, Feb. 16, 2023 (59-54 win)
 Had a turnover margin of -10 or worse-12 (13-25), at San Diego State, Jan. 27, 2024 (79-54 loss)
 Had a turnover margin of -15 or worse-18 (9-27), Oregon Tech, Nov. 15, 2021 (83-48 win)

Team Streaks

Won 5 consecutive games13 games, Feb. 12, 2020 to Jan. 2, 2021
 Won 10 consecutive games13 games, Feb. 12, 2020 to Jan. 2, 2021
 Won 15 consecutive games15 games, Jan. 12, 2008 to March 12, 2008
 Lost 10 consecutive games10 games, March 8, 1996 to Dec. 22, 1996
 Won 10 consecutive home games13 games, Dec. 7, 2018 to Nov. 8, 2019
 Lost 5 consecutive home games5 games, Jan. 30, 2012 to March 6, 2012
 Won 5 consecutive road games7 games, Feb. 11, 2017 to Dec. 28, 2017
 Lost 10 consecutive road games11 games, Dec. 12, 2021 to Nov. 17, 2022

Team Half

Scored 30+ points in a quarter35 (2nd Q), Evergreen State, Dec. 12, 2022 (97-31 win)
 Scored 50+ points in a half56 (1st H), Evergreen State, Dec. 12, 2022 (97-31 win)
 Scored 60+ points in a half68 (1st H), Multnomah, Nov. 7, 2022 (121-64 win)
 Scored less than 20 points in a half18 (1st H)
 Scored fewer than 10 points in a quarterAir Force, March 2, 2024 (67-66 loss)
 Scored fewer than 10 points in a half6 (2nd Q)
 Shot 70% in a quarterAir Force, March 2, 2024 (67-66 loss)
 Shot 70% in a half81.8% (9-11, 3rd Q)
 Shot 60% in a halfat No. 24 UNLV, Feb. 28, 2024 (63-57 loss)
 Shot 60% in a quarter65.6% (21-32, 1st H)
 Allowed fewer than 10 points in a quarterEvergreen State, Dec. 12, 2022 (97-31 win)
 Allowed fewer than 10 points in a half8 (4th Q)
 Allowed 30+ points in a quarterAir Force, March 2, 2024 (67-66 loss)
 Allowed 50+ points in a half30 (3rd Q), at UNLV, Jan. 16, 2024 (73-61 loss)
 Allowed 20 or fewer points in a half50 UNLV, Jan. 24, 2024 (84-63 loss)
 Allowed 20 or fewer points in a quarter17 (2nd H)
 Allowed 15 or fewer points in a halfWyoming, Feb. 10, 2024 (56-42 win)
 Led by 20+ points at halftime13 (2nd H), San Jose State, Feb. 7, 2024 (73-42 win)
 Led by 25+ points at halftime+26 (41-15), Utah State, Jan. 20, 2024 (76-41 win)
 Led by 30+ points at halftime+26 (41-15), Utah State, Jan. 20, 2024 (76-41 win)
 Trailing by 20+ points at halftime+30 (47-17), Utah State, Feb. 18, 2023 (89-41 win)
 Tied at halftime23 (44-23), Colorado, Dec. 4, 2022 (71-48 loss)
 Tied at halftime29-29, San Jose State, Feb. 7, 2024 (73-42 win)
 Had 10+ blocked shots in a half11, UC Riverside, Nov. 15, 2023 (63-55 win)

Individuals

Freshman scored 20+ points20, Mya Hansen, vs. Utah State, March 5, 2023 (66-58 win)
 Freshman scored 25+ points31, Mya Hansen, BYU, Dec. 1, 2022 (76-67 loss)
 Scored 20+ points26, Mya Hansen, Air Force, March 2, 2024 (66-67 loss)
 Scored 25+ points26, Mya Hansen, Air Force, March 2, 2024 (66-67 loss)
 Scored 30+ points31, Mya Hansen, BYU, Dec. 1, 2022 (76-67 loss)
 Scored 35+ points40, Jade Loville, at UNLV, Feb. 10, 2021 (85-59 win)
 Scored 40+ points40, Jade Loville, at UNLV, Feb. 10, 2021 (85-59 win)
 Scored 20+ points off the bench21
 Tatum Thompson, at Fresno State, Jan. 31, 2024 (60-50 win)

Made 10+ field goals10, Natalie Pasco, Utah State, Feb. 18, 2023 (89-41 win)
 Made 5+ 3-point FG5, Natalie Pasco, at Utah State, Feb. 14, 2024 (73-57 win)

Made 10+ free throws10, Mya Hansen, Air Force, March 2, 2024 (66-67 loss)
 Attempted 15+ free throws15, Braydey Hodgins, vs. Nevada, March 11, 2019 (72-67 win)

Freshman had 10+ rebounds10, Trista Hull, Fresno State, Feb. 2, 2022 (62-56 loss)
 Had 10+ rebounds10, Abby Muse, at Nevada Feb. 17, 2024 (68-65 OT loss)
 Had 15+ rebounds16, Abby Muse, San Diego State, Jan. 13, 2024 (68-59 win)
 Had 20+ rebounds20, Mallory McGwire, at UNLV, Feb. 11, 2021 (74-62 loss)

Freshman had 10+ assists16, Mary Kay Naro, at Utah State, Feb. 18, 2021 (87-69 win)
 Had 10+ assists11, Mary Kay Naro, Warner Pacific, Dec. 20, 2021 (90-39 win)

Freshman had 5+ steals5, Marta Hermida, Washington State, Dec. 3, 2015 (57-52 loss)
 Had 5+ steals5, Dominique Leonidas, Wyoming, Jan. 19, 2022 (70-59 win)
 Had 8+ steals8, Shalen Shaw, Wyoming, Jan. 23, 2016 (58-49 win)

Freshman had 5+ blocked shots7, Abby Muse, at Air Force, Jan. 8, 2021 (71-49 win)
 Had 5+ blocked shots5, Abby Muse, at Fresno State, Jan. 31, 2024 (60-50 win)

Had a double-doubleAbby Muse (15 points, 13 rebounds)
Nevada, Jan. 3, 2024 (58-57 loss)

Freshman had a double-doubleTrista Hull (11 points, 10 rebounds)
Fresno State, Feb. 2, 2022 (62-56 loss)

Had a triple-doubleMarta Hermida (22 points, 11 assists)
Corban, Nov. 26, 2017 (94-50 win)

Had 20 points and 10 reboundsElodie Lalotte (20 points, 12 rebounds)
at New Mexico, Jan. 21, 2023 (76-68 loss)

Had 5+ players score 10+ points5 players
Hansen 15, Hueckman 11, Lalotte 10, Muse 10, Pasco 10
Evergreen State, Dec. 12, 2022 (97-31 win)

Had 2+ players with 10+ rebounds2 players
Abby Muse 11, Elodie Lalotte 10

.....vs. Colorado State, March 6, 2023 (59-52 loss)

Had 2+ players with a double-double2 players
Abby Muse (10 points, 12 rebounds), Elodie Lalotte (16 points, 10 rebounds)

.....at San Jose State, Feb. 23, 2023 (78-70 win)

SPORTS INFORMATION

Alex Semadeni (Primary)

970-237-1634
 alexsemadeni@boisestate.edu

Camryn Edens (Secondary)

702-686-9194
 camrynedens@boisestate.edu

*All postgame interview requests with head coach Gordy Presnell and Bronco student-athletes should be made before the 5 minute mark of the 4th quarter.

2023-24 STATS

Record	Overall	Home	Away	Neutral	Team	1st	2nd	3rd	4th	OT	TOT
ALL GAMES	19-12	13-3	5-8	1-1	Boise St.	503	434	507	509	6	1959
CONFERENCE	10-8	6-3	4-5	0-0	Opponents	362	449	476	500	9	1796
NON-CONFERENCE	9-4	7-0	1-3	1-1							

Team Box Score

No.	Player	Total			3-Point			F-Throw		Rebounds				Other				PTS	AVG			
		GP-GS	MIN	AVG	FG-FGA	FG%	3FG-3FGA	3FG%	FT-FTA	FT%	OFF	DEF	TOT	AVG	PF	DQ	A			TO	BLK	STL
32	PASCO, Natalie	31-30	930:10	30.0	148-369	.401	75-189	.397	43-53	.811	14	54	68	2.2	43	1	32	54	3	22	414	13.4
1	HANSEN, Mya	30-30	800:21	26.7	86-233	.369	37-94	.394	71-84	.845	12	79	91	3.0	56	1	90	85	5	28	280	9.3
33	MUSE, Abby	31-31	779:52	25.2	90-186	.484	0-0	.000	50-92	.543	74	191	265	8.5	72	1	34	66	87	36	230	7.4
23	LALOTTE, Elodie	30-22	521:46	17.4	90-189	.476	0-2	.000	31-65	.477	51	81	132	4.4	70	0	20	34	11	26	211	7.0
4	BAYES, Dani	31-3	581:37	18.8	75-206	.364	44-131	.336	16-22	.727	17	41	58	1.9	30	0	32	31	3	20	210	6.8
0	THOMPSON, Tatum	31-1	427:04	13.8	72-173	.416	12-44	.273	45-63	.714	21	84	105	3.4	41	1	25	41	10	28	201	6.5
12	NARO, Mary Kay	29-29	891:32	30.7	44-140	.314	15-64	.234	20-28	.714	25	83	108	3.7	42	0	128	59	21	30	123	4.2
22	HULL, Trista	28-4	476:23	17.0	40-104	.385	1-5	.200	34-52	.654	50	94	144	5.1	52	0	32	31	36	7	115	4.1
15	CHRISTENSEN, Alyssa	26-3	258:28	9.9	24-60	.400	10-23	.435	7-8	.875	16	48	64	2.5	20	0	10	17	9	1	65	2.5
2	LOVROVICH, Linsey	24-0	218:44	9.1	19-49	.388	5-12	.417	14-24	.583	11	19	30	1.3	9	0	14	12	6	6	57	2.4
11	BURGESS, Kaitlin	21-1	119:59	5.7	12-34	.353	7-23	.304	4-6	.667	2	4	6	0.3	11	0	7	10	0	1	35	1.7
24	CLARK, Jayda	19-0	128:11	6.7	2-13	.154	0-6	.000	5-10	.500	4	8	12	0.6	5	0	12	7	1	2	9	0.5
21	MCQUIETOR, Sydney	13-1	30:21	2.3	1-7	.143	0-0	.000	4-4	1.000	4	3	7	0.5	5	0	1	2	0	2	6	0.5
30	NARO, Mackenzie	10-0	21:11	2.1	1-3	.333	1-3	.333	0-0	.000	0	0	0	0.0	0	0	0	0	1	1	3	0.3
5	HUECKMAN, Allie	11-0	39:23	3.6	0-12	.000	0-6	.000	0-0	.000	0	9	9	0.8	6	0	1	1	0	0	0	0.0
Team											64	75	139						19			
Total		31	6225		704-1778	.396	207-602	.344	344-511	.673	365	873	1238	39.9	462	4	438	469	193	210	1959	63.2
Opponents		31	6225		672-1842	.365	176-612	.288	276-389	.710	318	775	1093	35.3	534	5	345	441	116	229	1796	57.9

Team Statistics

	BOISE	OPP
Scoring	1959	1796
Points per game	63.2	57.9
Scoring margin	+5.3	-
Field goals-att	704-1778	672-1842
Field goal pct	.396	.365
3 point fg-att	207-602	176-612
3-point FG pct	.344	.288
3-pt FG made per game	6.7	5.7
Free throws-att	344-511	276-389
Free throw pct	.673	.710
F-Throws made per game	11.1	8.9
Rebounds	1238	1093
Rebounds per game	39.9	35.3
Rebounding margin	+4.7	-
Assists	438	345
Assists per game	14.1	11.1
Turnovers	469	441
Turnovers per game	15.1	14.2
Turnover margin	-0.9	-
Assist/turnover ratio	0.9	0.8
Steals	210	229
Steals per game	6.8	7.4
Blocks	193	116
Blocks per game	6.2	3.7
Winning streak	0	-
Home win streak	0	-
Attendance	20708	20877
Home games-Avg/Game	16-1294	13-1606
Neutral site-Avg/Game	-	2-1000

Team Results

Date	Opponent	Score	Att.
11/06/2023	Col. of Idaho	W 77-35	827
11/13/2023	Weber St.	W 76-47	765
11/15/2023	UC Riverside	W 63-55	689
11/20/2023	Pepperdine	W 63-47	1558
11/24/2023	vs Santa Clara	L 52-62	1000
11/25/2023	vs Rutgers	W 68-65	1000
11/29/2023	UC Davis	W 70-53	828
12/03/2023	at Eastern Wash.	L 43-64	729
12/06/2023	CSU Bakersfield	W 87-66	838
12/09/2023	at BYU	L 50-65	2722
12/12/2023	Rocky Mountain	W 67-46	2732
12/20/2023	at UC San Diego	L 56-62	121
12/21/2023	at San Diego	W 62-54	203
12/30/2023	at Wyoming	L 47-61	2939
01/03/2024	Nevada	L 57-58	1506
01/06/2024	at New Mexico	W 64-56	5715
01/13/2024	San Diego St.	W 68-59	1511
01/17/2024	at San Jose St.	W 68-64	566
01/20/2024	Utah St.	W 76-41	1578
01/24/2024	UNLV	L 63-84	1058
01/27/2024	at San Diego St.	L 54-79	2003
01/31/2024	at Fresno St.	W 60-50	932
02/07/2024	San Jose St.	W 73-42	954
02/10/2024	Wyoming	W 56-42	1492
02/14/2024	at Utah St.	W 73-57	287
02/17/2024	at Nevada	Lot 65-68	1442
02/21/2024	New Mexico	W 58-55	1454
02/24/2024	Fresno St.	W 70-65	1187
02/28/2024	at UNLV	L 57-63	1044
03/02/2024	Air Force	L 66-67	1731
03/05/2024	at Colorado St.	L 50-64	2174

MOUNTAIN WEST STATS

Record	Overall	Home	Away	Neutral	Team	1st	2nd	3rd	4th	OT	TOT
ALL GAMES	10-8	6-3	4-5	0-0	Boise St.	272	248	288	311	6	1125
CONFERENCE	10-8	6-3	4-5	0-0	Opponents	212	266	298	290	9	1075
NON-CONFERENCE	0-0	0-0	0-0	0-0							

Team Box Score

No.	Player	Total			3-Point		F-Throw		Rebounds				Other				PTS	AVG				
		GP-GS	MIN	AVG	FG-FGA	FG%	3FG-3FGA	3FG%	FT-FTA	FT%	OFF	DEF	TOT	AVG	PF	DQ			A	TO	BLK	STL
32	PASCO, Natalie	18-17	580:10	32.2	83-225	.369	41-116	.353	30-36	.833	10	37	47	2.6	28	1	17	30	1	18	237	13.2
1	HANSEN, Mya	17-17	461:38	27.2	51-137	.372	19-55	.345	42-50	.840	9	38	47	2.8	32	0	52	45	1	15	163	9.6
0	THOMPSON, Tatum	18-1	271:43	15.1	49-125	.392	6-28	.214	37-54	.685	15	60	75	4.2	23	1	15	23	6	17	141	7.8
4	BAYES, Dani	18-3	358:41	19.9	47-124	.379	26-73	.356	10-14	.714	9	24	33	1.8	19	0	14	19	2	10	130	7.2
23	LALOTTE, Elodie	18-16	328:45	18.3	55-116	.474	0-1	.000	17-36	.472	31	53	84	4.7	38	0	12	20	4	15	127	7.1
33	MUSE, Abby	18-18	440:58	24.5	48-104	.462	0-0	.000	29-44	.659	37	95	132	7.3	40	1	12	34	36	21	125	6.9
12	NARO, Mary Kay	16-16	514:09	32.1	18-68	.265	7-37	.189	12-18	.667	12	43	55	3.4	22	0	68	33	11	17	55	3.4
22	HULL, Trista	18-0	298:49	16.6	19-52	.365	0-3	.000	21-34	.618	29	62	91	5.1	28	0	25	16	28	5	59	3.3
2	LOVROVICH, Linsey	13-0	105:06	8.1	12-22	.545	3-5	.600	4-9	.444	4	6	10	0.8	6	0	4	9	2	5	31	2.4
11	BURGESS, Kaitlin	12-1	79:49	6.7	8-21	.381	5-16	.313	3-4	.750	2	3	5	0.4	7	0	4	5	0	0	24	2.0
15	CHRISTENSEN, Alyssa	14-0	99:29	7.1	10-24	.417	5-10	.500	0-0	.000	6	20	26	1.9	11	0	7	10	4	1	25	1.8
21	MCQUIETOR, Sydney	4-1	11:42	2.9	1-5	.200	0-0	.000	2-2	1.000	3	1	4	1.0	0	0	0	1	0	2	4	1.0
24	CLARK, Jayda	9-0	50:55	5.7	0-3	.000	0-2	.000	4-8	.500	1	3	4	0.4	3	0	5	3	0	2	4	0.4
30	NARO, Mackenzie	4-0	08:06	2.0	0-1	.000	0-1	.000	0-0	.000	0	0	0	0.0	0	0	0	0	0	0	0	0.0
5	HUECKMAN, Allie	4-0	14:59	3.7	0-5	.000	0-2	.000	0-0	.000	0	3	3	0.8	2	0	0	1	0	0	0	0.0
Team											36	39	75				11					
Total		18	3625		401-1032	.389	112-349	.321	211-309	.683	204	487	691	38.4	259	3	235	260	95	128	1125	62.5
Opponents		18	3625		404-1078	.375	107-373	.287	160-212	.755	183	463	646	35.9	311	3	203	250	67	134	1075	59.7

Team Statistics

	BOISE	OPP
Scoring	1125	1075
Points per game	62.5	59.7
Scoring margin	+2.8	-
Field goals-att	401-1032	404-1078
Field goal pct	.389	.375
3 point fg-att	112-349	107-373
3-point FG pct	.321	.287
3-pt FG made per game	6.2	5.9
Free throws-att	211-309	160-212
Free throw pct	.683	.755
F-Throws made per game	11.7	8.9
Rebounds	691	646
Rebounds per game	38.4	35.9
Rebounding margin	+2.5	-
Assists	235	203
Assists per game	13.1	11.3
Turnovers	260	250
Turnovers per game	14.4	13.9
Turnover margin	-0.6	-
Assist/turnover ratio	0.9	0.8
Steals	128	134
Steals per game	7.1	7.4
Blocks	95	67
Blocks per game	5.3	3.7
Winning streak	0	-
Home win streak	0	-
Attendance	12471	17102
Home games-Avg/Game	9-1386	9-1900
Neutral site-Avg/Game	-	0-0

Team Results

Date	Opponent	Score	Att.
12/30/2023	at Wyoming	L 47-61	2939
01/03/2024	Nevada	L 57-58	1506
01/06/2024	at New Mexico	W 64-56	5715
01/13/2024	San Diego St.	W 68-59	1511
01/17/2024	at San Jose St.	W 68-64	566
01/20/2024	Utah St.	W 76-41	1578
01/24/2024	UNLV	L 63-84	1058
01/27/2024	at San Diego St.	L 54-79	2003
01/31/2024	at Fresno St.	W 60-50	932
02/07/2024	San Jose St.	W 73-42	954
02/10/2024	Wyoming	W 56-42	1492
02/14/2024	at Utah St.	W 73-57	287
02/17/2024	at Nevada	Lot 65-68	1442
02/21/2024	New Mexico	W 58-55	1454
02/24/2024	Fresno St.	W 70-65	1187
02/28/2024	at UNLV	L 57-63	1044
03/02/2024	Air Force	L 66-67	1731
03/05/2024	at Colorado St.	L 50-64	2174

2023-24 BOISE STATE PHOTO ROSTER



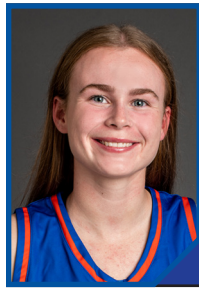
0 - Tatum Thompson
G/F • SO
Woodinville, Wash.
Woodinville HS



1 - Mya Hansen
G • SO
Billings, Mont.
Billings Central Catholic HS



2 - Linsey Lovrovich
G • JR
Gig Harbor, Wash.
Peninsula HS



4 - Dani Bayes
G • SO
Brisbane, Australia
Sheldone College



5 - Allie Hueckman
G • R-SO
Burns, Ore.
Burns HS



11 - Kaitlin Burgess
G • R-SR
Auckland, New Zealand
Coll. of Southern Idaho



12 - Mary Kay Naro
G • SR
Beaverton, Ore.
Beaverton HS



14 - Alyssa Christensen
F • JR
New Plymouth, Idaho
College of Southern Idaho



21 - Sydney McQuieter
F • SR
Keller, Texas
Boston College



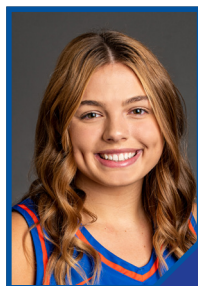
22 - Trista Hull
F • JR
Yakima, Wash.
La Salle HS



23 - Elodie Lalotte
F • SR
Paris, France
Orangewood Academy



24 - Jayda Clark
G • JR
Richland, Wash.
Richland HS



30 - Mackenzie Naro
G • JR
Beaverton, Ore.
Beaverton HS



32 - Natalie Pasco
G • SO
Danville, Calif.
San Ramon Valley HS



33 - Abby Muse
F • SR
Brentwood, Calif.
Heritage HS

COACHING STAFF



Gordy Presnell
Head Coach
19th season
37th overall



Heather Sower
Assistant Coach
22nd season
29th overall



Cariann Ramirez
Assistant Coach
Eighth season
Eighth overall



Mike Petrino
Assistant Coach
Third season
28th overall



Bree Blanding
Director of Operations
First season
First overall

PRONUNCIATION GUIDE

Mya Hansen MY-uh
Allie Huckeman..... HECK-man
Elodie LalotteEl-uh-DEE Luh-lot
Linsey Lovrovich.....LAHV-roh-vich
Mackenzie Naro..... Narrow

Mary Kay Naro Narrow
Gordy Presnell..... PRESS-nell
Lauren SaleSaul-aye
Heather SowerSo-er