



Officials: Verne Harris, Michael Irving, Greg Nixon

New Mexico - 68

Record: 26-9

NO.	Name	Min	FG		3P		FT		Rebounds			Fouls		TP	AS	TO	ST	Blocks		+/-
			M-A	M-A	M-A	M-A	OR	DR	TOT	PF	FD	BS	BA							
15	JT Toppin	F 34:34	6-8	0-0	1-2	6	5	11	3	2	13	1	0	1	0	0	1	0	0	5
23	Nelly Joseph	F 23:57	2-7	0-0	1-4	2	5	7	4	4	5	2	0	0	0	2	2	2	15	
2	Donovan Dent	G 12:54	0-2	0-0	0-0	0	0	0	1	0	0	4	1	0	0	2	0	2	-6	
5	Jamal Mashburn, Jr.	G 34:45	6-16	3-8	6-7	1	3	4	1	4	21	0	0	2	0	1	7			
10	Jaelen House	G 36:30	10-22	3-7	5-5	0	5	5	2	4	28	1	1	3	0	2	12			
0	Jemarl Baker Jr.	21:12	0-3	0-2	0-0	0	4	4	1	1	0	0	1	0	2	0	7			
22	Mustapha Amzil	15:09	0-2	0-1	1-2	0	2	2	2	2	1	0	0	1	1	0	-8			
3	Tru Washington	14:39	0-4	0-2	0-0	0	2	2	0	0	0	3	0	0	0	1	1			
12	Isaac Mushila	03:52	0-0	0-0	0-0	0	0	0	2	0	0	0	0	0	0	0	2			
21	Sebastian Forsling	02:28	0-0	0-0	0-0	0	0	0	1	0	0	0	0	0	0	0	0			
Team									6	1	7			0	1					
Totals			24-64	6-20	14-20	15	27	42	17	17	68	11	4	7	5	8	7			

Shooting By Period		
1 st FG%	15-34	44.1%
3PT%	5-9	55.6%
FT%	1-3	33.3%
2 nd FG%	9-30	30.0%
3PT%	1-11	9.1%
FT%	13-17	76.5%
GM FG%	24-64	37.5%
3PT%	6-20	30.0%
FT%	14-20	70.0%

Dead Ball Rebounds: 3, 0

Technical Fouls:House 2nd14:41

San Diego St. - 61

Record: 24-10

NO.	Name	Min	FG		3P		FT		Rebounds			Fouls		TP	AS	TO	ST	Blocks		+/-
			M-A	M-A	M-A	M-A	OR	DR	TOT	PF	FD	BS	BA							
3	Micah Parrish	F 28:13	3-6	1-3	0-0	0	3	3	1	0	7	0	0	1	1	0	-12			
4	Jay Pal	F 23:19	3-6	0-1	2-3	3	0	3	2	2	8	1	1	0	3	0	-8			
13	Jaedon LeDee	F 36:50	7-12	0-1	11-11	3	3	6	3	10	25	2	4	1	0	1	-2			
5	Lamont Butler	G 30:41	2-13	2-6	1-2	0	0	0	0	1	7	3	1	0	0	3	-15			
12	Darrion Trammell	G 31:33	1-5	1-3	0-0	0	7	7	4	1	3	4	1	1	0	1	-6			
14	Reese Waters	16:45	2-7	0-3	3-3	0	5	5	3	1	7	0	2	0	1	0	8			
21	Miles Byrd	12:49	0-2	0-1	0-0	1	5	6	2	1	0	1	1	0	3	0	4			
25	Elijah Saunders	16:41	2-5	0-2	0-0	1	2	3	1	0	4	2	0	0	0	1				
40	Miles Heide	03:10	0-0	0-0	0-0	0	1	1	1	0	0	0	0	0	0	0	-5			
Team									2	2	4			0	0					
Totals			20-56	4-20	17-19	10	28	38	17	16	61	13	10	3	8	5	-7			

Shooting By Period		
1 st FG%	12-27	44.4%
3PT%	2-10	20.0%
FT%	4-6	66.7%
2 nd FG%	8-29	27.6%
3PT%	2-10	20.0%
FT%	13-13	100%
GM FG%	20-56	35.7%
3PT%	4-20	20.0%
FT%	17-19	89.5%

Dead Ball Rebounds: 1, 0

Technical Fouls::NONE

	UNM	SDSU
Biggest lead	14 (1 st 4:34)	4 (2 nd 7:08)
Best Scoring Run	10 (2 nd 0:36)	9 (2 nd 14:29)
Lead Changes	8	
Times Tied	7	
Time with Lead	30:24	06:38

	UNM	SDSU
Points from		
Turnovers	14	0
Paint	28	20
Second Chance	18	6
Fast Breaks	8	4
Bench	1	11

	Period by Period Scoring		
	1st	2nd	TOT
UNM	36	32	68
SDSU	30	31	61



Period 1

Quarter Starters:

SDSU	3 Parrish M	4 Pal J	5 Butler L	12 Trammell D	13 LeDee J
UNM	2 Dent D	5 Mashburn, Jr. J	10 House J	15 Toppin J	23 Joseph N

Game Time	SDSU	Score	Diff	UNM
20:00	13 LEDEE J jumpball lost			15 TOPPIN J jumpball won
19:43				23 JOSEPH N 2pt FG in the paint, layup blocked
19:43	4 PAL J block (1)			
19:39				23 JOSEPH N offensive rebound (1)
19:39				23 JOSEPH N 2pt FG second chance in the paint, layup missed
19:39				offensive rebound (2)
19:28		0-2	-2	5 MASHBURN, JR. J 2pt FG second chance outside the paint, jump shot made (2)
19:28				15 TOPPIN J assist (1)
18:57	5 BUTLER L 2pt FG outside the paint, jump shot missed			
18:52				5 MASHBURN, JR. J defensive rebound (1)
18:39	13 LEDEE J steal (1)			2 DENT D turnover bad pass (1)
18:34	13 LEDEE J turnover lost ball (1)			10 HOUSE J steal (1)
18:31		0-4	-4	10 HOUSE J 2pt FG fast break from turnover in the paint, layup made (2)
18:11	3 PARRISH M 2pt FG outside the paint, jump shot made (2)	2-4	-2	
18:11	5 BUTLER L assist (1)			
17:56		2-6	-4	23 JOSEPH N 2pt FG in the paint, layup made (2)
17:56				2 DENT D assist (1)
17:38	12 TRAMMELL D 3pt FG , jump shot made (3)	5-6	-1	
17:38	13 LEDEE J assist (1)			
17:19				23 JOSEPH N 2pt FG in the paint, layup missed
17:15				offensive rebound (4)
17:15				2 DENT D substitution out
17:15				0 BAKER JR. J substitution in
17:15	12 TRAMMELL D steal (1)			0 BAKER JR. J turnover bad pass (1)
17:00	5 BUTLER L 2pt FG from turnover in the paint, jump shot blocked			
17:00				0 BAKER JR. J block (1)
16:56				0 BAKER JR. J defensive rebound (1)
16:47		5-8	-3	23 JOSEPH N 2pt FG in the paint, hook shot made (4)
16:27	12 TRAMMELL D 2pt FG outside the paint, jump shot missed			
16:24	4 PAL J offensive rebound (1)			
16:24	4 PAL J 2pt FG second chance in the paint, dunk, made (2)	7-8	-1	
16:02		7-10	-3	15 TOPPIN J 2pt FG outside the paint, hook shot made (2)
15:41	12 TRAMMELL D 3pt FG , jump shot missed			
15:39				0 BAKER JR. J defensive rebound (2)
15:39	3 PARRISH M foul personal (1 - 1)			0 BAKER JR. J foul drawn (1)
15:39	Timeout media			
15:39	5 BUTLER L substitution out			
15:39	14 WATERS R substitution in			
15:19				10 HOUSE J 3pt FG , jump shot missed
15:17				offensive rebound (7)



Officials: Verne Harris, Michael Irving, Greg Nixon

Game Time	SDSU	Score	Diff	UNM
15:07				23 JOSEPH N 2pt FG second chance outside the paint, jump shot missed
15:03				15 TOPPIN J offensive rebound (1)
15:03				15 TOPPIN J 2pt FG second chance in the paint, layup missed
15:02	12 TRAMMELL D defensive rebound (1)			
14:46	4 PAL J foul drawn (1)			5 MASHBURN, JR. J foul shooting (1 - 1)
14:46	4 PAL J free throw 1 - 2 made (3)	8-10	-2	
14:46	4 PAL J free throw 2 - 2 missed			
14:45				15 TOPPIN J defensive rebound (2)
14:22				10 HOUSE J 2pt FG outside the paint, jump shot missed
14:18	12 TRAMMELL D defensive rebound (2)			
14:12	4 PAL J turnover bad pass (1)			5 MASHBURN, JR. J steal (1)
13:46		8-13	-5	5 MASHBURN, JR. J 3pt FG from turnover, jump shot made (5)
13:46				10 HOUSE J assist (1)
13:30	jump ball situation			
13:30	3 PARRISH M substitution out			
13:30	4 PAL J substitution out			
13:30	12 TRAMMELL D substitution out			
13:30	5 BUTLER L substitution in			
13:30	21 BYRD M substitution in			
13:30	25 SAUNDERS E substitution in			
13:30				15 TOPPIN J substitution out
13:30				22 AMZIL M substitution in
13:20	14 WATERS R turnover travel (1)			
13:07		8-15	-7	5 MASHBURN, JR. J 2pt FG from turnover in the paint, layup made (7)
13:07	13 LEDEE J foul shooting (1 - 2)			5 MASHBURN, JR. J foul drawn (1)
13:07		8-16	-8	5 MASHBURN, JR. J free throw 1 - 1 made (8)
12:54	25 SAUNDERS E 3pt FG , jump shot missed			
12:50	21 BYRD M offensive rebound (1)			
12:43	5 BUTLER L 2pt FG second chance in the paint, layup blocked			
12:43				22 AMZIL M block (1)
12:39				10 HOUSE J defensive rebound (1)
12:37				10 HOUSE J 2pt FG in the paint, layup blocked
12:37	21 BYRD M block (1)			
12:34	14 WATERS R defensive rebound (1)			
12:30	14 WATERS R 3pt FG , jump shot missed			
12:27				10 HOUSE J defensive rebound (2)
12:22	21 BYRD M foul shooting (1 - 3)			23 JOSEPH N foul drawn (1)
12:22				23 JOSEPH N free throw fast break 1 - 2 missed
12:22				offensive dead ball rebound (1)
12:22				23 JOSEPH N free throw fast break 2 - 2 missed
12:21	14 WATERS R defensive rebound (2)			
12:00	21 BYRD M turnover bad pass (1)			10 HOUSE J steal (2)
11:54				10 HOUSE J 3pt FG from turnover, jump shot missed
11:51	13 LEDEE J defensive rebound (1)			
11:49	13 LEDEE J foul drawn (1)			23 JOSEPH N foul personal (1 - 2)
11:49				Timeout media
11:49				0 BAKER JR. J substitution out
11:49				10 HOUSE J substitution out



Officials: Verne Harris, Michael Irving, Greg Nixon

Game Time	SDSU	Score	Diff	UNM
11:49				23 JOSEPH N substitution out
11:49				2 DENT D substitution in
11:49				3 WASHINGTON T substitution in
11:49				15 TOPPIN J substitution in
11:38	5 BUTLER L 3pt FG , jump shot made (3)	11-16	-5	
11:38	13 LEDEE J assist (2)			
11:05		11-18	-7	5 MASHBURN, JR. J 2pt FG outside the paint, jump shot made (10)
11:05				2 DENT D assist (2)
10:52	25 SAUNDERS E 2pt FG outside the paint, turnaround jump shot made (2)	13-18	-5	
10:32				5 MASHBURN, JR. J 2pt FG in the paint, jump shot missed
10:28	14 WATERS R defensive rebound (3)			
10:19	5 BUTLER L foul drawn (1)			22 AMZIL M foul shooting (1 - 3)
10:19	5 BUTLER L free throw 1 - 2 missed			
10:19	offensive dead ball rebound (1)			
10:19	5 BUTLER L free throw 2 - 2 made (4)	14-18	-4	
09:55				22 AMZIL M 2pt FG in the paint, layup missed
09:53	14 WATERS R defensive rebound (4)			
09:46	13 LEDEE J foul drawn (2)			15 TOPPIN J foul personal (1 - 4)
09:46	13 LEDEE J substitution out			
09:46	40 HEIDE M substitution in			
09:44	14 WATERS R 2pt FG outside the paint, jump shot missed			
09:42				22 AMZIL M defensive rebound (1)
09:42	40 HEIDE M foul personal (1 - 4)			22 AMZIL M foul drawn (1)
09:42				5 MASHBURN, JR. J substitution out
09:42				10 HOUSE J substitution in
09:42	14 WATERS R substitution out			
09:42	3 PARRISH M substitution in			
09:30				15 TOPPIN J 2pt FG in the paint, jump shot missed
09:26	21 BYRD M defensive rebound (2)			
09:17	25 SAUNDERS E 2pt FG in the paint, jump shot made (4)	16-18	-2	
09:17	5 BUTLER L assist (2)			
08:56		16-21	-5	10 HOUSE J 3pt FG , jump shot made (5)
08:56				2 DENT D assist (3)
08:37	5 BUTLER L 3pt FG , jump shot missed			
08:32				15 TOPPIN J defensive rebound (3)
08:18		16-24	-8	10 HOUSE J 3pt FG , jump shot made (8)
08:18				3 WASHINGTON T assist (1)
07:58	3 PARRISH M 2pt FG outside the paint, jump shot made (4)	18-24	-6	
07:58	25 SAUNDERS E assist (1)			
07:39				3 WASHINGTON T 3pt FG , jump shot missed
07:36	3 PARRISH M defensive rebound (1)			
07:28	25 SAUNDERS E 2pt FG in the paint, layup missed			
07:25				10 HOUSE J defensive rebound (3)
07:22				2 DENT D 2pt FG in the paint, layup blocked
07:22	21 BYRD M block (2)			
07:18	40 HEIDE M defensive rebound (1)			
07:08	3 PARRISH M 3pt FG , jump shot missed			
07:05				3 WASHINGTON T defensive rebound (1)



Officials: Verne Harris, Michael Irving, Greg Nixon

Game Time	SDSU	Score	Diff	UNM
06:44		18-27	-9	10 HOUSE J 3pt FG , jump shot made (11)
06:44				2 DENT D assist (4)
06:36	Timeout 30 Sec			
06:36	21 BYRD M substitution out			
06:36	25 SAUNDERS E substitution out			
06:36	40 HEIDE M substitution out			
06:36	4 PAL J substitution in			
06:36	12 TRAMMELL D substitution in			
06:36	13 LEDEE J substitution in			
06:36				2 DENT D substitution out
06:36				3 WASHINGTON T substitution out
06:36				22 AMZIL M substitution out
06:36				0 BAKER JR. J substitution in
06:36				5 MASHBURN, JR. J substitution in
06:36				23 JOSEPH N substitution in
06:22	13 LEDEE J 2pt FG outside the paint, jump shot missed			
06:19				15 TOPPIN J defensive rebound (4)
06:08				5 MASHBURN, JR. J 2pt FG outside the paint, jump shot blocked
06:08	4 PAL J block (2)			
06:05	12 TRAMMELL D defensive rebound (3)			
05:59	3 PARRISH M 3pt FG , jump shot missed			
05:56				23 JOSEPH N defensive rebound (2)
05:38	4 PAL J foul personal (1 - 5)			23 JOSEPH N foul drawn (2)
05:38				15 TOPPIN J substitution out
05:38				12 MUSHILA I substitution in
05:20		18-30	-12	5 MASHBURN, JR. J 3pt FG , jump shot made (13)
05:20				23 JOSEPH N assist (1)
04:48	13 LEDEE J 3pt FG , jump shot missed			
04:45				0 BAKER JR. J defensive rebound (3)
04:34		18-32	-14	10 HOUSE J 2pt FG outside the paint, jump shot made (13)
04:09	13 LEDEE J 2pt FG in the paint, layup made (2)	20-32	-12	
03:48	jump ball situation			
03:48				Timeout media
03:35				5 MASHBURN, JR. J 3pt FG , jump shot missed
03:33	12 TRAMMELL D defensive rebound (4)			
03:33	12 TRAMMELL D foul drawn (1)			10 HOUSE J foul personal (1 - 5)
03:33				12 MUSHILA I substitution out
03:33				15 TOPPIN J substitution in
03:15	5 BUTLER L 3pt FG , jump shot missed			
03:13				5 MASHBURN, JR. J defensive rebound (2)
02:49				23 JOSEPH N 2pt FG in the paint, jump shot blocked
02:49	4 PAL J block (3)			
02:46				15 TOPPIN J offensive rebound (5)
02:45		20-34	-14	15 TOPPIN J 2pt FG second chance in the paint, layup made (4)
02:30	13 LEDEE J 2pt FG in the paint, layup made (4)	22-34	-12	
02:30	4 PAL J assist (1)			
02:30	13 LEDEE J foul drawn (3)			23 JOSEPH N foul shooting (2 - 6)
02:30	5 BUTLER L substitution out			



Officials: Verne Harris, Michael Irving, Greg Nixon

Game Time	SDSU	Score	Diff	UNM
02:30	14 WATERS R substitution in			
02:30				23 JOSEPH N substitution out
02:30				22 AMZIL M substitution in
02:30	13 LEDEE J free throw 1 - 1 made (5)	23-34	-11	
02:16	12 TRAMMELL D foul personal (1 - 6)			15 TOPPIN J foul drawn (1)
02:02				10 HOUSE J 2pt FG outside the paint, jump shot missed
01:59	12 TRAMMELL D defensive rebound (5)			
01:52	4 PAL J 2pt FG in the paint, layup made (5)	25-34	-9	
01:52	12 TRAMMELL D assist (1)			
01:52	4 PAL J foul drawn (2)			0 BAKER JR. J foul shooting (1 - 7)
01:52	4 PAL J free throw 1 - 1 made (6)	26-34	-8	
01:29	3 PARRISH M steal (1)			10 HOUSE J turnover bad pass (1)
01:24	13 LEDEE J turnover out of bounds (2)			
01:24				Timeout 30 Sec
01:24				0 BAKER JR. J substitution out
01:24				2 DENT D substitution in
01:10		26-36	-10	10 HOUSE J 2pt FG from turnover in the paint, layup made (15)
00:43	13 LEDEE J 2pt FG outside the paint, jump shot made (7)	28-36	-8	
00:43	12 TRAMMELL D assist (2)			
00:14				10 HOUSE J 2pt FG in the paint, layup missed
00:11	13 LEDEE J defensive rebound (2)			
00:01	4 PAL J 2pt FG in the paint, dunk, made (8)	30-36	-6	
00:01	12 TRAMMELL D assist (3)			
END OF PERIOD				
SDSU 30-36 UNM				



Officials: Verne Harris, Michael Irving, Greg Nixon

New Mexico - 36

NO.	Name	F	Min	FG			Rebounds			Fouls		TP	AS	TO	ST	Blocks		+/-
				M-A	M-A	M-A	OR	DR	TOT	PF	FD					BS	BA	
15	JT Toppin	F	16:14	2-4	0-0	0-0	2	3	5	1	1	4	1	0	0	0	0	0
23	Nelly Joseph	F	12:17	2-7	0-0	0-2	1	1	2	2	2	4	1	0	0	0	2	11
2	Donovan Dent	G	09:22	0-1	0-0	0-0	0	0	0	0	0	0	4	1	0	0	1	0
5	Jamal Mashburn, Jr.	G	16:54	5-8	2-3	1-1	0	2	2	1	1	13	0	0	1	0	1	1
10	Jaelen House	G	17:53	6-12	3-5	0-0	0	3	3	1	0	15	1	1	2	0	1	10
0	Jemarl Baker Jr.		10:38	0-0	0-0	0-0	0	3	3	1	1	0	0	1	0	1	0	6
22	Mustapha Amzil		09:24	0-1	0-0	0-0	0	1	1	1	1	0	0	0	0	1	0	-2
3	Tru Washington		05:13	0-1	0-1	0-0	0	1	1	0	0	0	1	0	0	0	0	1
12	Isaac Mushila		02:05	0-0	0-0	0-0	0	0	0	0	0	0	0	0	0	0	0	3
Team							3	0	3			0		0				
Totals				15-34	5-9	1-3	6	14	20	7	6	36	8	3	3	2	5	6

Shooting By Period			
1st	FG%	15-34	44.1%
	3PT%	5-9	55.6%
	FT%	1-3	33.3%
GM	FG%	15-34	44.1%
	3PT%	5-9	55.6%
	FT%	1-3	33.3%

Dead Ball Rebounds: 1, 0

Technical Fouls::NONE

San Diego St. - 30

NO.	Name	F	Min	FG			Rebounds			Fouls		TP	AS	TO	ST	Blocks		+/-
				M-A	M-A	M-A	OR	DR	TOT	PF	FD					BS	BA	
3	Micah Parrish	F	16:12	2-4	0-2	0-0	0	1	1	1	0	4	0	0	1	0	0	-7
4	Jay Pal	F	13:06	3-3	0-0	2-3	1	0	1	1	2	8	1	1	0	3	0	-2
13	Jaedon LeDee	F	16:50	3-5	0-1	1-1	0	2	2	1	3	7	2	2	1	0	0	-1
5	Lamont Butler	G	15:21	1-6	1-3	1-2	0	0	0	0	1	4	2	0	0	0	2	-10
12	Darrion Trammell	G	13:06	1-3	1-2	0-0	0	5	5	1	1	3	3	0	1	0	0	-2
14	Reese Waters		08:27	0-2	0-1	0-0	0	4	4	0	0	0	0	1	0	0	0	5
21	Miles Byrd		06:54	0-0	0-0	0-0	1	1	2	1	0	0	0	1	0	2	0	-4
25	Elijah Saunders		06:54	2-4	0-1	0-0	0	0	0	0	0	4	1	0	0	0	0	-4
40	Miles Heide		03:10	0-0	0-0	0-0	0	1	1	1	0	0	0	0	0	0	0	-5
Team							0	0	0			0		0				
Totals				12-27	2-10	4-6	2	14	16	6	7	30	9	5	3	5	2	-6

Shooting By Period			
1st	FG%	12-27	44.4%
	3PT%	2-10	20.0%
	FT%	4-6	66.7%
GM	FG%	12-27	44.4%
	3PT%	2-10	20.0%
	FT%	4-6	66.7%

Dead Ball Rebounds: 1, 0

Technical Fouls::NONE

	UNM	SDSU
Biggest lead	14 (1 st 4:34)	0 (1 st 20:00)
Best Scoring Run	8(1 st 4:34)	6(1 st 1:52)
Lead Changes	0	
Times Tied	0	
Time with Lead	19:28	00:00

Points from	UNM	SDSU
Turnovers	10	0
Paint	12	12
Second Chance	4	2
Fast Breaks	2	0
Bench	0	4

	Period by Period Scoring		
	1st	2nd	TOT
UNM	36	32	68
SDSU	30	31	61



Period 2

Quarter Starters:

SDSU	3 Parrish M	4 Pal J	5 Butler L	12 Trammell D	13 LeDee J
UNM	0 Baker Jr. J	5 Mashburn, Jr. J	10 House J	15 Toppin J	23 Joseph N

Game Time	SDSU	Score	Diff	UNM
20:00	14 WATERS R substitution out			
20:00	5 BUTLER L substitution in			
20:00				2 DENT D substitution out
20:00				22 AMZIL M substitution out
20:00				0 BAKER JR. J substitution in
20:00				23 JOSEPH N substitution in
19:33	5 BUTLER L 2pt FG in the paint, layup missed			
19:30				23 JOSEPH N defensive rebound (3)
18:59		30-39	-9	5 MASHBURN, JR. J 3pt FG , jump shot made (16)
18:59				23 JOSEPH N assist (2)
18:51	5 BUTLER L turnover bad pass (1)			
18:27				0 BAKER JR. J 3pt FG from turnover, jump shot missed
18:25				offensive rebound (22)
18:20				10 HOUSE J 2pt FG from turnover second chance outside the paint, jump shot missed
18:18	3 PARRISH M defensive rebound (2)			
18:11	5 BUTLER L 2pt FG outside the paint, jump shot missed			
18:09				10 HOUSE J defensive rebound (4)
18:04		30-41	-11	10 HOUSE J 2pt FG fast break in the paint, layup made (17)
17:39	5 BUTLER L 3pt FG , jump shot made (7)	33-41	-8	
17:39	12 TRAMMELL D assist (4)			
17:06	jump ball situation			
17:04				5 MASHBURN, JR. J 3pt FG , jump shot missed
17:04				offensive rebound (24)
17:04				turnover shot clock (4)
16:45	3 PARRISH M 2pt FG from turnover outside the paint, jump shot missed			
16:43				0 BAKER JR. J defensive rebound (4)
16:22				5 MASHBURN, JR. J 3pt FG , jump shot missed
16:19	12 TRAMMELL D defensive rebound (6)			
16:14	12 TRAMMELL D 2pt FG in the paint, layup blocked			
16:14				23 JOSEPH N block (1)
16:10				23 JOSEPH N defensive rebound (4)
15:51	Timeout media			
15:51	3 PARRISH M substitution out			
15:51	4 PAL J substitution out			
15:51	12 TRAMMELL D substitution out			
15:51	14 WATERS R substitution in			
15:51	21 BYRD M substitution in			
15:51	25 SAUNDERS E substitution in			
15:48				5 MASHBURN, JR. J 3pt FG , jump shot missed
15:45	21 BYRD M defensive rebound (3)			
15:40	5 BUTLER L 2pt FG in the paint, layup missed			
15:38				23 JOSEPH N defensive rebound (5)



New Mexico at San Diego St.

03/16/24 Thomas & Mack Center, Las Vegas
2023-24 Men's Basketball

Game Time: 3:00 PM
Game Duration: 2:09
Attendance: 11,112

Officials: Verne Harris, Michael Irving, Greg Nixon

Game Time	SDSU	Score	Diff	UNM
15:16				5 MASHBURN, JR. J 2pt FG in the paint, layup missed
15:13	25 SAUNDERS E defensive rebound (1)			
14:59	13 LEDEE J 2pt FG in the paint, hook shot made (9)	35-41	-6	
14:59	21 BYRD M assist (1)			
14:43				10 HOUSE J 2pt FG in the paint, layup blocked
14:43	14 WATERS R block (1)			
14:41	25 SAUNDERS E defensive rebound (2)			
14:41				10 HOUSE J foul class A technical (2 - 1)
14:41	14 WATERS R free throw fast break 1 - 2 made (1)	36-41	-5	
14:41				10 HOUSE J substitution out
14:41				15 TOPPIN J substitution out
14:41				2 DENT D substitution in
14:41				22 AMZIL M substitution in
14:41	14 WATERS R free throw fast break 2 - 2 made (2)	37-41	-4	
14:41	5 BUTLER L substitution out			
14:41	12 TRAMMELL D substitution in			
14:29	13 LEDEE J 2pt FG outside the paint, jump shot made (11)	39-41	-2	
14:29	25 SAUNDERS E assist (2)			
14:14				2 DENT D 2pt FG in the paint, layup blocked
14:14	21 BYRD M block (3)			
14:11	21 BYRD M defensive rebound (4)			
14:02	13 LEDEE J foul drawn (4)			23 JOSEPH N foul personal (3 - 2)
14:02				23 JOSEPH N substitution out
14:02				15 TOPPIN J substitution in
13:59	13 LEDEE J turnover lost ball (3)			5 MASHBURN, JR. J steal (2)
13:33	21 BYRD M foul shooting (2 - 1)			5 MASHBURN, JR. J foul drawn (2)
13:33				5 MASHBURN, JR. J free throw 1 - 2 missed
13:33				offensive dead ball rebound (2)
13:33		39-42	-3	5 MASHBURN, JR. J free throw 2 - 2 made (17)
13:22	14 WATERS R turnover bad pass (2)			22 AMZIL M steal (1)
13:18	14 WATERS R foul shooting (1 - 2)			22 AMZIL M foul drawn (2)
13:18		39-43	-4	22 AMZIL M free throw fast break 1 - 2 made (1)
13:18				0 BAKER JR. J substitution out
13:18				5 MASHBURN, JR. J substitution out
13:18				3 WASHINGTON T substitution in
13:18				10 HOUSE J substitution in
13:18				22 AMZIL M free throw fast break 2 - 2 missed
13:16	14 WATERS R defensive rebound (5)			
12:56	14 WATERS R 2pt FG outside the paint, turnaround jump shot made (4)	41-43	-2	
12:56	14 WATERS R foul drawn (1)			2 DENT D foul shooting (1 - 3)
12:56	14 WATERS R free throw 1 - 1 made (5)	42-43	-1	
12:30				3 WASHINGTON T 3pt FG , jump shot missed
12:27	12 TRAMMELL D defensive rebound (7)			
12:18	13 LEDEE J foul drawn (5)			15 TOPPIN J foul personal (2 - 4)
12:12	14 WATERS R 2pt FG in the paint, jump shot made (7)	44-43	1	
11:53				10 HOUSE J 2pt FG in the paint, layup missed
11:50	21 BYRD M defensive rebound (5)			
11:44	25 SAUNDERS E 3pt FG , pull up jump shot missed			



New Mexico at San Diego St.

03/16/24 Thomas & Mack Center, Las Vegas
2023-24 Men's Basketball

Game Time: 3:00 PM
Game Duration: 2:09
Attendance: 11,112

Officials: Verne Harris, Michael Irving, Greg Nixon

Game Time	SDSU	Score	Diff	UNM
11:41				10 HOUSE J defensive rebound (5)
11:40	25 SAUNDERS E foul personal (1 - 3)			10 HOUSE J foul drawn (1)
11:40	Timeout media			
11:40				3 WASHINGTON T substitution out
11:40				15 TOPPIN J substitution out
11:40				0 BAKER JR. J substitution in
11:40				23 JOSEPH N substitution in
11:32				22 AMZIL M 3pt FG , jump shot missed
11:28	21 BYRD M defensive rebound (6)			
11:09	21 BYRD M foul drawn (1)			22 AMZIL M foul personal (2 - 5)
11:09				2 DENT D substitution out
11:09				5 MASHBURN, JR. J substitution in
11:07	21 BYRD M 3pt FG , jump shot missed			
11:04	13 LEDEE J offensive rebound (3)			
11:01	13 LEDEE J 2pt FG second chance in the paint, layup made (13)	46-43	3	
10:39	14 WATERS R foul shooting (2 - 4)			5 MASHBURN, JR. J foul drawn (3)
10:39		46-44	2	5 MASHBURN, JR. J free throw 1 - 2 made (18)
10:39				22 AMZIL M substitution out
10:39				15 TOPPIN J substitution in
10:39		46-45	1	5 MASHBURN, JR. J free throw 2 - 2 made (19)
10:27	21 BYRD M 2pt FG outside the paint, jump shot missed			
10:22				23 JOSEPH N defensive rebound (6)
10:20	13 LEDEE J foul personal (2 - 5)			23 JOSEPH N foul drawn (3)
10:20	21 BYRD M substitution out			
10:20	3 PARRISH M substitution in			
10:04				0 BAKER JR. J 3pt FG , jump shot missed
10:02				5 MASHBURN, JR. J offensive rebound (3)
10:01	14 WATERS R foul shooting (3 - 6)			5 MASHBURN, JR. J foul drawn (4)
10:01		46-46	0	5 MASHBURN, JR. J free throw 1 - 2 made (20)
10:01	14 WATERS R substitution out			
10:01	25 SAUNDERS E substitution out			
10:01	4 PAL J substitution in			
10:01	5 BUTLER L substitution in			
10:01		46-47	-1	5 MASHBURN, JR. J free throw 2 - 2 made (21)
09:50	13 LEDEE J foul drawn (6)			23 JOSEPH N foul shooting (4 - 6)
09:50	13 LEDEE J free throw 1 - 2 made (14)	47-47	0	
09:50				23 JOSEPH N substitution out
09:50				12 MUSHILA I substitution in
09:50	13 LEDEE J free throw 2 - 2 made (15)	48-47	1	
09:25		48-49	-1	10 HOUSE J 2pt FG in the paint, jump shot made (19)
09:06	13 LEDEE J foul drawn (7)			15 TOPPIN J foul personal (3 - 7)
09:06	13 LEDEE J 1&1 free throw 1 made (16)	49-49	0	
09:06	13 LEDEE J 1&1 free throw 2 made (17)	50-49	1	
08:55	12 TRAMMELL D foul personal (2 - 7)			10 HOUSE J foul drawn (2)
08:55		50-50	0	10 HOUSE J 1&1 free throw 1 made (20)
08:55		50-51	-1	10 HOUSE J 1&1 free throw 2 made (21)
08:55				0 BAKER JR. J substitution out
08:55				3 WASHINGTON T substitution in



New Mexico at San Diego St.

03/16/24 Thomas & Mack Center, Las Vegas
2023-24 Men's Basketball

Game Time: 3:00 PM
Game Duration: 2:09
Attendance: 11,112

Officials: Verne Harris, Michael Irving, Greg Nixon

Game Time	SDSU	Score	Diff	UNM
08:47	13 LEDEE J foul drawn (8)			12 MUSHILA I foul personal (1 - 8)
08:47	13 LEDEE J 1&1 free throw 1 made (18)	51-51	0	
08:47	13 LEDEE J 1&1 free throw 2 made (19)	52-51	1	
08:26				5 MASHBURN, JR. J 3pt FG , jump shot missed
08:22	3 PARRISH M defensive rebound (3)			
08:03	13 LEDEE J foul drawn (9)			12 MUSHILA I foul personal (2 - 9)
08:03				12 MUSHILA I substitution out
08:03				21 FORSLING S substitution in
08:03	13 LEDEE J 1&1 free throw 1 made (20)	53-51	2	
08:03	13 LEDEE J 1&1 free throw 2 made (21)	54-51	3	
07:37				5 MASHBURN, JR. J 2pt FG in the paint, jump shot missed
07:35				offensive rebound (31)
07:35	Timeout media			
07:33		54-53	1	10 HOUSE J 2pt FG second chance in the paint, layup made (23)
07:33				3 WASHINGTON T assist (2)
07:08	3 PARRISH M 3pt FG , jump shot made (7)	57-53	4	
07:08	5 BUTLER L assist (3)			
06:43				3 WASHINGTON T 2pt FG outside the paint, jump shot missed
06:42				15 TOPPIN J offensive rebound (6)
06:41		57-55	2	15 TOPPIN J 2pt FG second chance in the paint, layup made (6)
06:16	13 LEDEE J 2pt FG in the paint, hook shot missed			
06:13	4 PAL J offensive rebound (2)			
06:13	4 PAL J 2pt FG second chance in the paint, layup missed			
06:12	4 PAL J offensive rebound (3)			
06:12	4 PAL J 2pt FG second chance in the paint, layup missed			
06:11				15 TOPPIN J defensive rebound (7)
06:06				10 HOUSE J 2pt FG outside the paint, jump shot missed
06:03				15 TOPPIN J offensive rebound (8)
06:03		57-57	0	15 TOPPIN J 2pt FG second chance in the paint, layup made (8)
05:35	13 LEDEE J foul drawn (10)			21 FORSLING S foul shooting (1 - 10)
05:35	13 LEDEE J free throw 1 - 2 made (22)	58-57	1	
05:35	4 PAL J substitution out			
05:35	25 SAUNDERS E substitution in			
05:35				21 FORSLING S substitution out
05:35				22 AMZIL M substitution in
05:35	13 LEDEE J free throw 2 - 2 made (23)	59-57	2	
05:35	Timeout 30 Sec			
05:35				3 WASHINGTON T substitution out
05:35				0 BAKER JR. J substitution in
05:12				0 BAKER JR. J 2pt FG in the paint, layup missed
05:11	defensive rebound (31)			
04:41	5 BUTLER L 3pt FG , jump shot missed			
04:39	25 SAUNDERS E offensive rebound (3)			
04:35	5 BUTLER L 2pt FG second chance in the paint, layup blocked			
04:35				0 BAKER JR. J block (2)
04:31				22 AMZIL M defensive rebound (2)
04:28	12 TRAMMELL D foul shooting (3 - 8)			10 HOUSE J foul drawn (3)
04:28		59-58	1	10 HOUSE J free throw fast break 1 - 2 made (24)



New Mexico at San Diego St.

03/16/24 Thomas & Mack Center, Las Vegas
2023-24 Men's Basketball

Game Time: 3:00 PM
Game Duration: 2:09
Attendance: 11,112

Officials: Verne Harris, Michael Irving, Greg Nixon

Game Time	SDSU	Score	Diff	UNM
04:28				0 BAKER JR. J substitution out
04:28				3 WASHINGTON T substitution in
04:28		59-59	0	10 HOUSE J free throw fast break 2 - 2 made (25)
04:14	13 LEDEE J 2pt FG outside the paint, jump shot missed			
04:12				3 WASHINGTON T defensive rebound (2)
03:55				5 MASHBURN, JR. J 2pt FG outside the paint, jump shot missed
03:52	defensive rebound (33)			
03:52	Timeout media			
03:52				22 AMZIL M substitution out
03:52				23 JOSEPH N substitution in
03:35	13 LEDEE J turnover lost ball (4)			10 HOUSE J steal (3)
03:31				10 HOUSE J 3pt FG from turnover, jump shot missed
03:27	13 LEDEE J defensive rebound (4)			
03:03	12 TRAMMELL D turnover lost ball (1)			15 TOPPIN J steal (1)
02:34				3 WASHINGTON T 2pt FG from turnover in the paint, layup blocked
02:34	3 PARRISH M block (1)			
02:31				15 TOPPIN J offensive rebound (9)
02:30		59-61	-2	15 TOPPIN J 2pt FG from turnover second chance in the paint, layup made (10)
02:28	3 PARRISH M substitution out			
02:28	14 WATERS R substitution in			
02:11	14 WATERS R 2pt FG outside the paint, jump shot missed			
02:09				15 TOPPIN J defensive rebound (10)
01:40				10 HOUSE J 3pt FG , jump shot missed
01:38				23 JOSEPH N offensive rebound (7)
01:38	13 LEDEE J foul personal (3 - 9)			23 JOSEPH N foul drawn (4)
01:38	25 SAUNDERS E substitution out			
01:38	4 PAL J substitution in			
01:38		59-62	-3	23 JOSEPH N 1&1 free throw 1 made (5)
01:38				23 JOSEPH N 1&1 free throw 2 missed
01:36				15 TOPPIN J offensive rebound (11)
01:20		59-64	-5	10 HOUSE J 2pt FG second chance in the paint, jump shot made (27)
01:20	12 TRAMMELL D foul shooting (4 - 10)			10 HOUSE J foul drawn (4)
01:20		59-65	-6	10 HOUSE J free throw 1 - 1 made (28)
01:07	12 TRAMMELL D 3pt FG , jump shot missed			
01:05				defensive rebound (41)
00:36		59-67	-8	15 TOPPIN J 2pt FG in the paint, layup made (12)
00:36				3 WASHINGTON T assist (3)
00:29	13 LEDEE J 2pt FG in the paint, layup blocked			
00:29				23 JOSEPH N block (2)
00:29	offensive rebound (35)			
00:26	14 WATERS R 3pt FG second chance, jump shot missed			
00:24	13 LEDEE J offensive rebound (5)			
00:23	13 LEDEE J 2pt FG second chance in the paint, dunk, made (25)	61-67	-6	
00:23	Timeout 30 Sec			
00:23	12 TRAMMELL D substitution out			
00:23	21 BYRD M substitution in			



Official Basketball Play by Play - Second Half

New Mexico at San Diego St.

03/16/24 Thomas & Mack Center, Las Vegas
2023-24 Men's Basketball

Game Time: 3:00 PM

Game Duration: 2:09

Attendance: 11,112

Officials: Verne Harris, Michael Irving, Greg Nixon

Game Time	SDSU	Score	Diff	UNM
00:20	4 PAL J foul personal (2 - 11)			15 TOPPIN J foul drawn (2)
00:20				15 TOPPIN J free throw fast break 1 - 2 missed
00:20				offensive dead ball rebound (3)
00:20		61-68	-7	15 TOPPIN J free throw fast break 2 - 2 made (13)
00:12	4 PAL J 3pt FG , jump shot missed			
00:11	offensive rebound (37)			
00:04	14 WATERS R 3pt FG second chance, jump shot missed			
00:02	13 LEDEE J offensive rebound (6)			
00:00	5 BUTLER L 3pt FG second chance, jump shot missed			
00:00				5 MASHBURN, JR. J defensive rebound (4)
END OF GAME				
SDSU 61-68 UNM				



Officials: Verne Harris, Michael Irving, Greg Nixon

New Mexico - 32

NO.	Name	Min	FG		3P		FT		Rebounds			Fouls		TP	AS	TO	ST	Blocks		+/-
			M-A	M-A	M-A	OR	DR	TOT	PF	FD	BS	BA								
15	JT Toppin	F 18:20	4-4	0-0	1-2	4	2	6	2	1	9	0	0	1	0	0	1	0	0	5
23	Nelly Joseph	F 11:40	0-0	0-0	1-2	1	4	5	2	2	1	1	0	0	0	0	2	0	4	
2	Donovan Dent	G 03:32	0-1	0-0	0-0	0	0	0	1	0	0	0	0	0	0	0	0	1	-6	
5	Jamal Mashburn, Jr.	G 17:51	1-8	1-5	5-6	1	1	2	0	3	8	0	0	1	0	0	0	0	6	
10	Jaelen House	G 18:37	4-10	0-2	5-5	0	2	2	1	4	13	0	0	1	0	1	0	1	2	
0	Jemarl Baker Jr.	10:34	0-3	0-2	0-0	0	1	1	0	0	0	0	0	0	0	0	1	0	1	
22	Mustapha Amzil	05:45	0-1	0-1	1-2	0	1	1	1	1	1	1	0	0	1	0	0	-6		
3	Tru Washington	09:26	0-3	0-1	0-0	0	1	1	0	0	0	2	0	0	0	0	1	0		
12	Isaac Mushila	01:47	0-0	0-0	0-0	0	0	0	2	0	0	0	0	0	0	0	0	-1		
21	Sebastian Forsling	02:28	0-0	0-0	0-0	0	0	0	1	0	0	0	0	0	0	0	0	0		
Team									3	1	4		0		1					
Totals			9-30	1-11	13-17	9	13	22	10	11	32	3	1	4	3	3	1			

Shooting By Period		
2 nd FG%	9-30	30.0%
3PT%	1-11	9.1%
FT%	13-17	76.5%
GM FG%	9-30	30.0%
3PT%	1-11	9.1%
FT%	13-17	76.5%

Dead Ball Rebounds: 2, 0

Technical Fouls: House 2nd 14:41

San Diego St. - 31

NO.	Name	Min	FG		3P		FT		Rebounds			Fouls		TP	AS	TO	ST	Blocks		+/-
			M-A	M-A	M-A	OR	DR	TOT	PF	FD	BS	BA								
3	Micah Parrish	F 12:01	1-2	1-1	0-0	0	2	2	0	0	3	0	0	0	0	0	0	1	0	-5
4	Jay Pal	F 10:13	0-3	0-1	0-0	2	0	2	1	0	0	0	0	0	0	0	0	0	-6	
13	Jaedon LeDee	F 20:00	4-7	0-0	10-10	3	1	4	2	7	18	0	2	0	0	1	0	-1		
5	Lamont Butler	G 15:20	1-7	1-3	0-0	0	0	0	0	0	3	1	1	0	0	0	1	-5		
12	Darrion Trammell	G 18:27	0-2	0-1	0-0	0	2	2	3	0	0	1	1	0	0	0	1	-4		
14	Reese Waters	08:18	2-5	0-2	3-3	0	1	1	3	1	7	0	1	0	1	0	1	3		
21	Miles Byrd	05:55	0-2	0-1	0-0	0	4	4	1	1	0	1	0	0	1	0	1	8		
25	Elijah Saunders	09:47	0-1	0-1	0-0	1	2	3	1	0	0	1	0	0	0	0	0	5		
Team									2	2	4		0		0					
Totals			8-29	2-10	13-13	8	14	22	11	9	31	4	5	0	3	3	-1			

Shooting By Period		
2 nd FG%	8-29	27.6%
3PT%	2-10	20.0%
FT%	13-13	100%
GM FG%	8-29	27.6%
3PT%	2-10	20.0%
FT%	13-13	100.0%

Dead Ball Rebounds: 0, 0

Technical Fouls: NONE

	UNM	SDSU
Biggest lead	11 (2 nd 18:04)	4 (2 nd 7:08)
Best Scoring Run	10 (2 nd 0:36)	9 (2 nd 14:29)
Lead Changes	8	
Times Tied	7	
Time with Lead	10:29	06:38

Points from	UNM	SDSU
Turnovers	4	0
Paint	16	8
Second Chance	14	4
Fast Breaks	6	4
Bench	1	7

	Period by Period Scoring		
	1st	2nd	TOT
UNM	36	32	68
SDSU	30	31	61

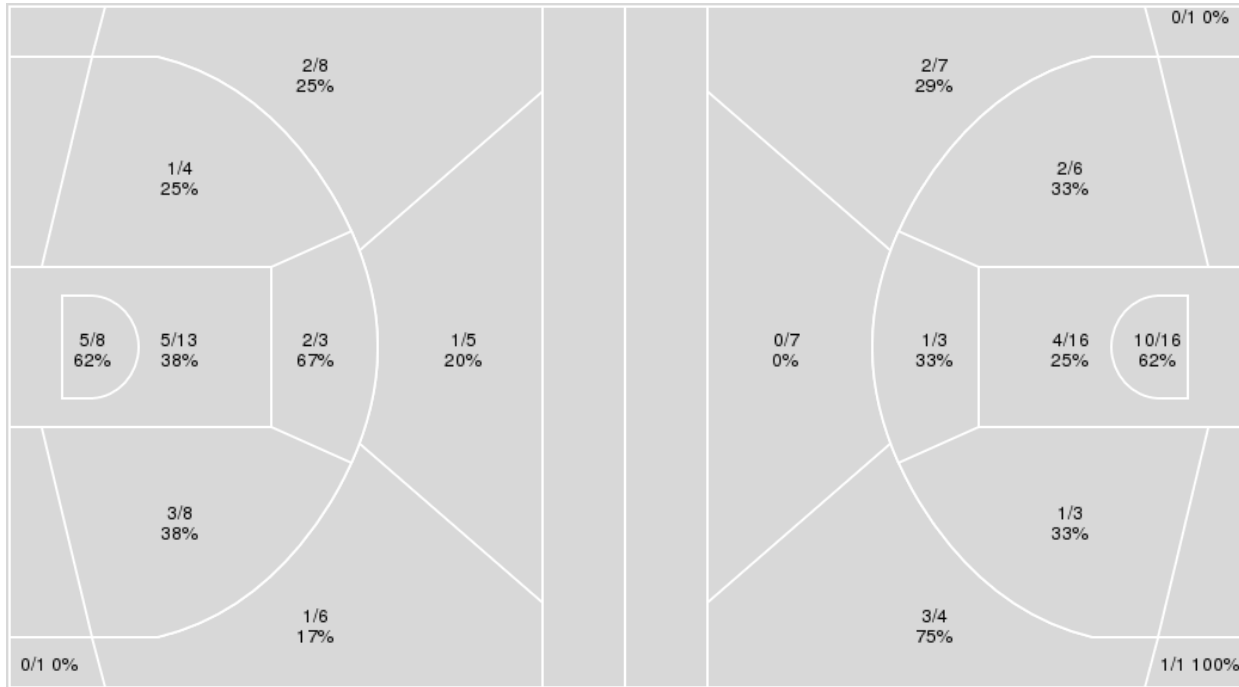


Officials: Verne Harris, Michael Irving, Greg Nixon

{ Players => 0, 2, 3, 4, 5, 8, 10, 11, 12, 13, 14, 21, 24, 25, 32, 40, 42; } { Players => All; } FG Types => All; Results => All;
 FG Types => All; Results => All;

San Diego St.

New Mexico



San Diego St.	M/A	%
Field Goals	20/56	36
2 Points	16/36	44
3 Points	4/20	20
Free Throws	17/19	89

New Mexico	M/A	%
Field Goals	24/64	38
2 Points	18/44	41
3 Points	6/20	30
Free Throws	14/20	70



New Mexico at San Diego St.

03/16/24 Thomas & Mack Center, Las Vegas
2023-24 Men's Basketball

Game Time: 3:00 PM
Game Duration: 2:09
Attendance: 11,112

Officials: Verne Harris, Michael Irving, Greg Nixon

New Mexico

No	Name	Mins		Score		Points Diff		Points per Min		Assists		Rebounds		Steals		Turnovers	
		On	Off	On	Off	On	Off	On	Off	On	Off	On	Off	On	Off	On	Off
0	Jemarl Baker Jr.	21:12	18:48	33 - 26	35 - 35	7	0	1.56	1.86	3	8	22	20	4	3	3	1
2	Donovan Dent	12:54	27:06	21 - 27	47 - 34	-6	13	1.63	1.73	6	5	9	33	3	4	1	3
3	Tru Washington	14:39	25:21	27 - 26	41 - 35	1	6	1.84	1.62	6	5	16	26	2	5	0	4
5	Jamal Mashburn, Jr.	34:45	05:15	59 - 52	9 - 9	7	0	1.70	1.71	8	3	38	4	7	0	4	0
10	Jaelen House	36:30	03:30	64 - 52	4 - 9	12	-5	1.75	1.14	10	1	41	1	5	2	4	0
12	Isaac Mushila	03:52	36:08	9 - 7	59 - 54	2	5	2.33	1.63	1	10	1	41	0	7	0	4
15	JT Toppin	34:34	05:26	59 - 54	9 - 7	5	2	1.71	1.66	10	1	39	3	6	1	4	0
21	Sebastian Forsling	02:28	37:32	6 - 6	62 - 55	0	7	2.43	1.65	1	10	4	38	0	7	0	4
22	Mustapha Amzil	15:09	24:51	21 - 29	47 - 32	-8	15	1.39	1.89	4	7	9	33	3	4	1	3
23	Nelly Joseph	23:57	16:03	41 - 26	27 - 35	15	-8	1.71	1.68	6	5	31	11	5	2	3	1

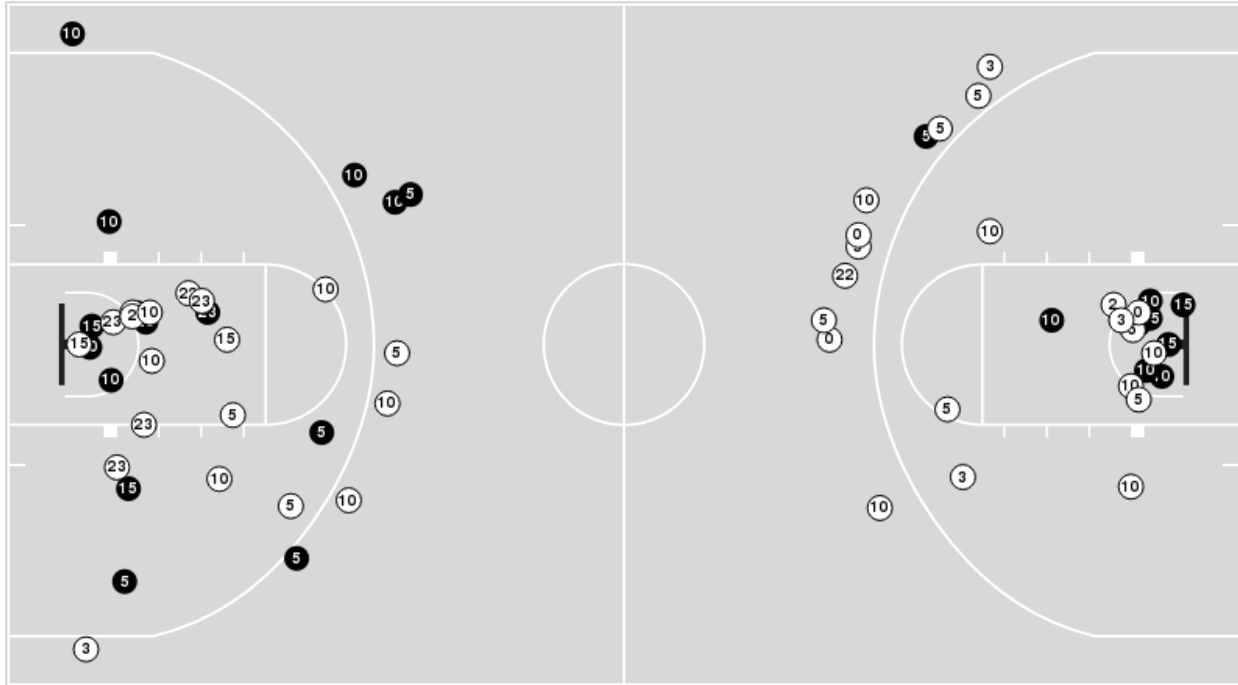
San Diego St.

No	Name	Mins		Score		Points Diff		Points per Min		Assists		Rebounds		Steals		Turnovers	
		On	Off	On	Off	On	Off	On	Off	On	Off	On	Off	On	Off	On	Off
3	Micah Parrish	28:13	11:47	40 - 52	21 - 16	-12	5	1.42	1.78	10	3	19	19	3	0	6	4
4	Jay Pal	23:19	16:41	37 - 45	24 - 23	-8	1	1.59	1.44	8	5	16	22	3	0	4	6
5	Lamont Butler	30:41	09:19	43 - 58	18 - 10	-15	8	1.40	1.93	9	4	28	10	2	1	6	4
12	Darrion Trammell	31:33	08:28	47 - 53	14 - 15	-6	-1	1.49	1.66	9	4	24	14	3	0	8	2
13	Jaedon LeDee	36:50	03:10	57 - 59	4 - 9	-2	-5	1.55	1.26	11	2	35	3	3	0	10	0
14	Reese Waters	16:45	23:15	30 - 22	31 - 46	8	-15	1.79	1.33	6	7	23	15	1	2	6	4
21	Miles Byrd	12:49	27:12	23 - 19	38 - 49	4	-11	1.80	1.40	5	8	20	18	0	3	4	6
25	Elijah Saunders	16:41	23:19	24 - 23	37 - 45	1	-8	1.44	1.59	5	8	22	16	0	3	6	4
40	Miles Heide	03:10	36:50	4 - 9	57 - 59	-5	-2	1.26	1.55	2	11	3	35	0	3	0	10

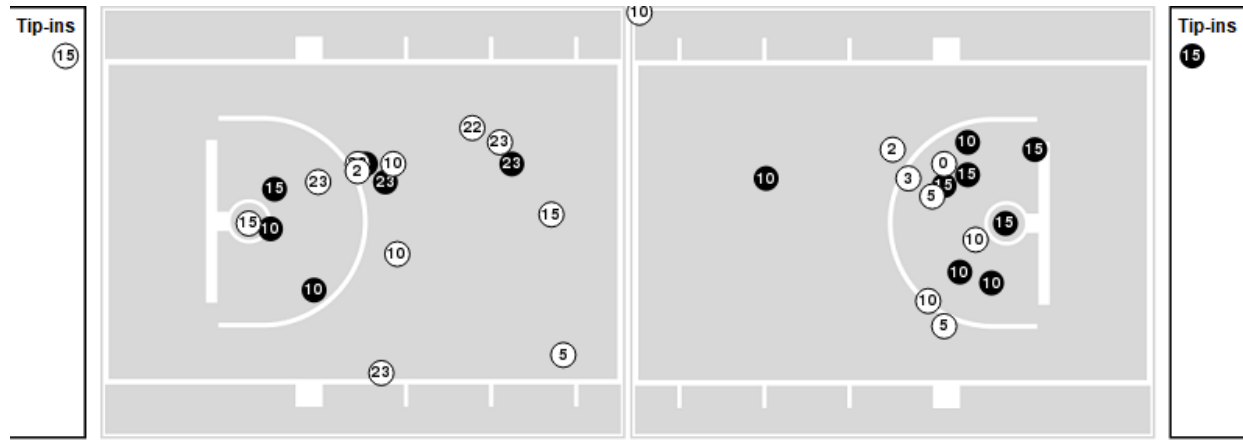


Players => AllFG Types=>AllResults=>All
New Mexico

All Field Goals



Blow Up Chart



● Made ○ Missed N - Player Number

New Mexico	M/A	%
Field Goals	24/64	38
2 Points	18/44	41
3 Points	6/20	30
Free Throws	14/20	70

New Mexico	M/A	%
Points in the Paint	28 (14 / 32)	44
Fast Break Points	8 (6/10)	60
Second Chance Points	18 (11/16)	69
Effective FG%	42	

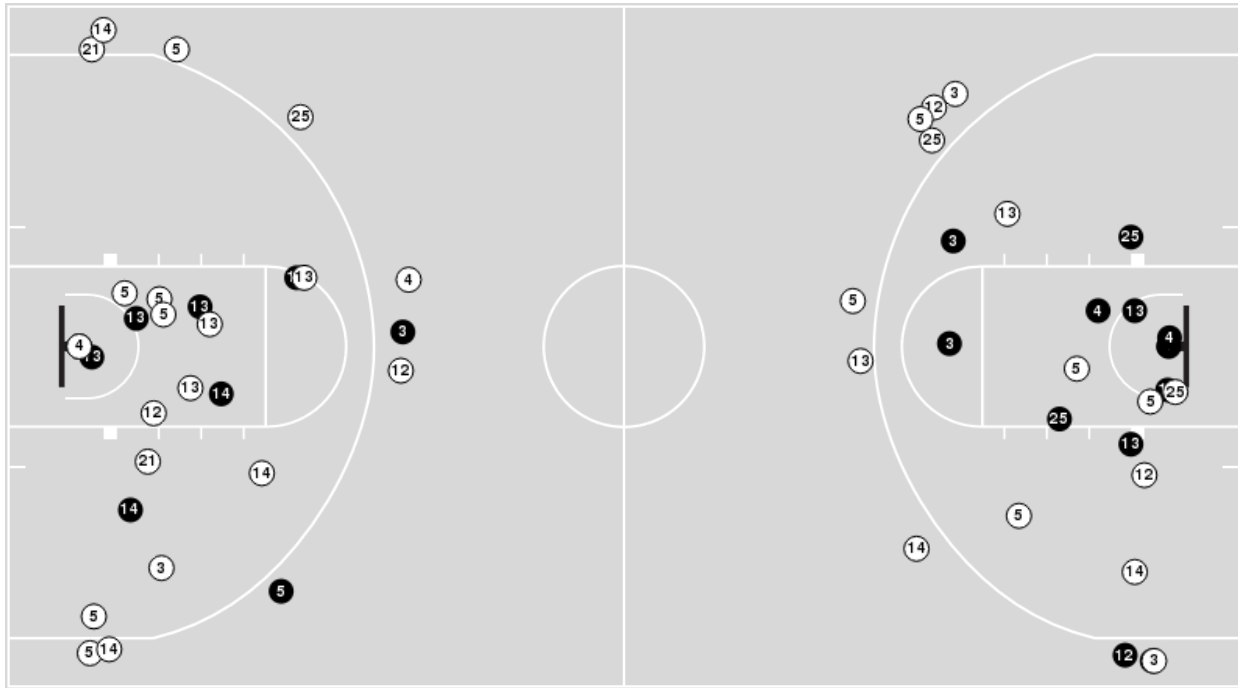


Officials: Verne Harris, Michael Irving, Greg Nixon

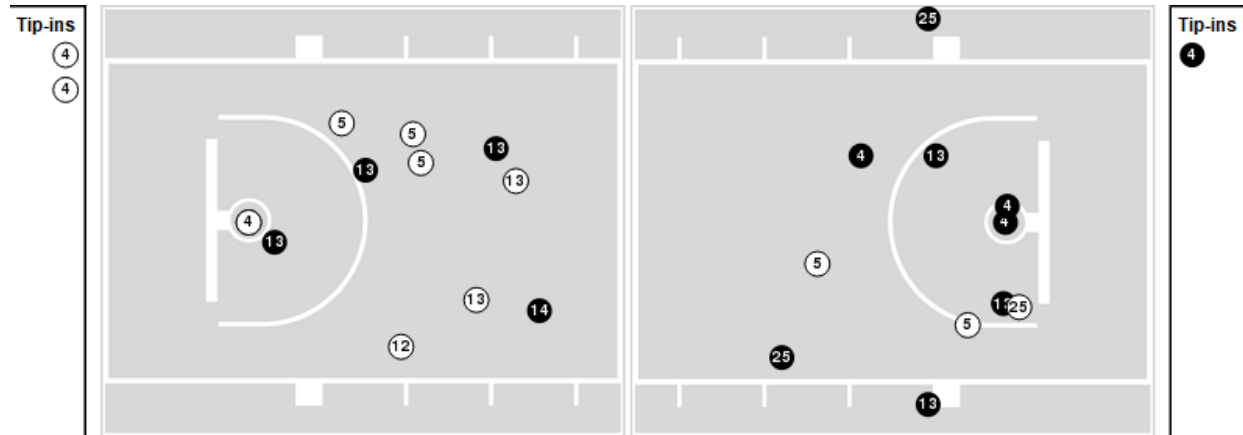
Players => 0, 2, 3, 4, 5, 8, 10, 11, 12, 13, 14, 21, 24, 25, 32, 40, 42FG Types=>AllResults=>All

San Diego St.

All Field Goals



Blow Up Chart



● Made ○ Missed N - Player Number

San Diego St.	M/A	%
Field Goals	20/56	36
2 Points	16/36	44
3 Points	4/20	20
Free Throws	17/19	89

San Diego St.	M/A	%
Points in the Paint	20 (10 / 21)	48
Fast Break Points	4 (4/4)	100
Second Chance Points	6 (3/10)	30
Effective FG%	39	



Officials: Verne Harris, Michael Irving, Greg Nixon

New Mexico

Lineup	Quarter On	Time On	Quarter Off	Time Off	Time on Court	Score	Score Diff	Reb	Stl	Tov	Ass	PPP
2- Dent D/ 5- Mashburn, Jr. J/ 10- House J/ 15- Toppin J/ 23- Joseph N/	1	20:00	1	17:15	02:45	6-5	1	4	1	1	2	1.5000
0- Baker Jr. J/ 5- Mashburn, Jr. J/ 10- House J/ 15- Toppin J/ 23- Joseph N/	1	17:15	1	13:30	03:45	7-3	4	5	1	1	1	1.1667
0- Baker Jr. J/ 5- Mashburn, Jr. J/ 10- House J/ 22- Amzil M/ 23- Joseph N/	1	13:30	1	11:49	01:41	3-0	3	2	1	0	0	0.6944
2- Dent D/ 3- Washington T/ 5- Mashburn, Jr. J/ 15- Toppin J/ 22- Amzil M/	1	11:49	1	09:42	02:07	2-6	-4	1	0	0	1	0.6667
2- Dent D/ 3- Washington T/ 10- House J/ 15- Toppin J/ 22- Amzil M/	1	09:42	1	06:36	03:06	9-4	5	3	0	0	3	1.5000
0- Baker Jr. J/ 5- Mashburn, Jr. J/ 10- House J/ 15- Toppin J/ 23- Joseph N/	1	06:36	1	05:38	00:58	0-0	0	2	0	0	0	0.0000
0- Baker Jr. J/ 5- Mashburn, Jr. J/ 10- House J/ 12- Mushila I/ 23- Joseph N/	1	05:38	1	03:33	02:05	5-2	3	1	0	0	1	1.6667
0- Baker Jr. J/ 5- Mashburn, Jr. J/ 10- House J/ 15- Toppin J/ 23- Joseph N/	1	03:33	1	02:30	01:03	2-2	0	2	0	0	0	2.0000
0- Baker Jr. J/ 5- Mashburn, Jr. J/ 10- House J/ 15- Toppin J/ 22- Amzil M/	1	02:30	1	01:24	01:06	0-4	-4	0	0	1	0	0.0000
2- Dent D/ 5- Mashburn, Jr. J/ 10- House J/ 15- Toppin J/ 22- Amzil M/	1	01:24	2	20:00	01:24	2-4	-2	0	0	0	0	1.0000
0- Baker Jr. J/ 5- Mashburn, Jr. J/ 10- House J/ 15- Toppin J/ 23- Joseph N/	2	20:00	2	14:41	05:19	5-6	-1	7	0	1	1	0.6250
0- Baker Jr. J/ 2- Dent D/ 5- Mashburn, Jr. J/ 22- Amzil M/ 23- Joseph N/	2	14:41	2	14:02	00:39	0-3	-3	0	0	0	0	0.0000
0- Baker Jr. J/ 2- Dent D/ 5- Mashburn, Jr. J/ 15- Toppin J/ 22- Amzil M/	2	14:02	2	13:18	00:44	2-0	2	0	2	0	0	1.5152
2- Dent D/ 3- Washington T/ 10- House J/ 15- Toppin J/ 22- Amzil M/	2	13:18	2	11:40	01:38	0-5	-5	1	0	0	0	0.0000
0- Baker Jr. J/ 2- Dent D/ 10- House J/ 22- Amzil M/ 23- Joseph N/	2	11:40	2	11:09	00:31	0-0	0	0	0	0	0	0.0000
0- Baker Jr. J/ 5- Mashburn, Jr. J/ 10- House J/ 22- Amzil M/ 23- Joseph N/	2	11:09	2	10:39	00:30	1-2	-1	0	0	0	0	2.2727
0- Baker Jr. J/ 5- Mashburn, Jr. J/ 10- House J/ 15- Toppin J/ 23- Joseph N/	2	10:39	2	09:50	00:49	3-1	2	2	0	0	0	2.2727
0- Baker Jr. J/ 5- Mashburn, Jr. J/ 10- House J/ 12- Mushila I/ 15- Toppin J/	2	09:50	2	08:55	00:55	4-3	1	0	0	0	0	2.1277
3- Washington T/ 5- Mashburn, Jr. J/ 10- House J/ 12- Mushila I/ 15- Toppin J/	2	08:55	2	08:03	00:52	0-2	-2	0	0	0	0	0.0000
3- Washington T/ 5- Mashburn, Jr. J/ 10- House J/ 15- Toppin J/ 21- Forsling S/	2	08:03	2	05:35	02:28	6-6	0	4	0	0	1	2.0000
3- Washington T/ 5- Mashburn, Jr. J/ 10- House J/ 15- Toppin J/ 22- Amzil M/	2	05:35	2	05:35	00:00	0-1	-1	0	0	0	0	0.0000
0- Baker Jr. J/ 5- Mashburn, Jr. J/ 10- House J/ 15- Toppin J/ 22- Amzil M/	2	05:35	2	04:28	01:07	1-0	1	1	0	0	0	0.6944
3- Washington T/ 5- Mashburn, Jr. J/ 10- House J/ 15- Toppin J/ 22- Amzil M/	2	04:28	2	03:52	00:36	1-0	1	1	0	0	0	0.6944
3- Washington T/ 5- Mashburn, Jr. J/ 10- House J/ 15- Toppin J/ 23- Joseph N/	2	03:52	2	00:00	03:52	9-2	7	6	2	0	1	1.7308



New Mexico at San Diego St.

03/16/24 Thomas & Mack Center, Las Vegas
2023-24 Men's Basketball

Game Time: 3:00 PM
Game Duration: 2:09
Attendance: 11,112

Officials: Verne Harris, Michael Irving, Greg Nixon

San Diego St.

Lineup	Quarter On	Time On	Quarter Off	Time Off	Time on Court	Score	Score Diff	Reb	Stl	Tov	Ass	PPP
3- Parrish M/ 4- Pal J/ 5- Butler L/ 12- Trammell D/ 13- LeDee J/	1	20:00	1	15:39	04:21	7-10	-3	1	2	1	2	1.0000
3- Parrish M/ 4- Pal J/ 12- Trammell D/ 13- LeDee J/ 14- Waters R/	1	15:39	1	13:30	02:09	1-3	-2	2	0	1	0	0.5319
5- Butler L/ 13- LeDee J/ 14- Waters R/ 21- Byrd M/ 25- Saunders E/	1	13:30	1	09:46	03:44	6-5	1	6	0	2	1	0.8721
5- Butler L/ 14- Waters R/ 21- Byrd M/ 25- Saunders E/ 40- Heide M/	1	09:46	1	09:42	00:04	0-0	0	0	0	0	0	0.0000
3- Parrish M/ 5- Butler L/ 21- Byrd M/ 25- Saunders E/ 40- Heide M/	1	09:42	1	06:36	03:06	4-9	-5	3	0	0	2	0.8000
3- Parrish M/ 4- Pal J/ 5- Butler L/ 12- Trammell D/ 13- LeDee J/	1	06:36	1	02:30	04:06	4-7	-3	2	0	0	1	0.6667
3- Parrish M/ 4- Pal J/ 12- Trammell D/ 13- LeDee J/ 14- Waters R/	1	02:30	2	20:00	02:30	8-2	6	2	1	1	3	1.6393
3- Parrish M/ 4- Pal J/ 5- Butler L/ 12- Trammell D/ 13- LeDee J/	2	20:00	2	15:51	04:09	3-5	-2	2	0	1	1	0.5000
5- Butler L/ 13- LeDee J/ 14- Waters R/ 21- Byrd M/ 25- Saunders E/	2	15:51	2	14:41	01:10	4-0	4	3	0	0	1	1.3889
12- Trammell D/ 13- LeDee J/ 14- Waters R/ 21- Byrd M/ 25- Saunders E/	2	14:41	2	10:20	04:21	9-4	5	6	0	2	1	1.0664
3- Parrish M/ 12- Trammell D/ 13- LeDee J/ 14- Waters R/ 25- Saunders E/	2	10:20	2	10:01	00:19	0-1	-1	0	0	0	0	0.0000
3- Parrish M/ 4- Pal J/ 5- Butler L/ 12- Trammell D/ 13- LeDee J/	2	10:01	2	05:35	04:26	12-11	1	3	0	0	1	2.0134
3- Parrish M/ 5- Butler L/ 12- Trammell D/ 13- LeDee J/ 25- Saunders E/	2	05:35	2	02:28	03:07	1-4	-3	4	0	2	0	0.2252
5- Butler L/ 12- Trammell D/ 13- LeDee J/ 14- Waters R/ 25- Saunders E/	2	02:28	2	01:38	00:50	0-0	0	0	0	0	0	0.0000
4- Pal J/ 5- Butler L/ 12- Trammell D/ 13- LeDee J/ 14- Waters R/	2	01:38	2	00:23	01:14	2-6	-4	2	0	0	0	1.0000
4- Pal J/ 5- Butler L/ 13- LeDee J/ 14- Waters R/ 21- Byrd M/	2	00:23	2	00:00	00:23	0-1	-1	2	0	0	0	0.0000



Officials: Verne Harris, Michael Irving, Greg Nixon

New Mexico

Lineup	Time	Score	Score Diff	Pts/Min	Reb	Stl	Tov	Ass	PPP
0- Baker Jr. J/ 5- Mashburn, Jr. J/ 10- House J/ 15- Toppin J/ 23- Joseph N/	11:54	17-12	5	1.4286	18	1	2	2	0.9815
2- Dent D/ 3- Washington T/ 10- House J/ 15- Toppin J/ 22- Amzil M/	04:44	9-9	0	1.9014	4	0	0	3	1.0664
3- Washington T/ 5- Mashburn, Jr. J/ 10- House J/ 15- Toppin J/ 23- Joseph N/	03:52	9-2	7	2.3276	6	2	0	1	1.7308
2- Dent D/ 5- Mashburn, Jr. J/ 10- House J/ 15- Toppin J/ 23- Joseph N/	02:45	6-5	1	2.1818	4	1	1	2	1.5000
3- Washington T/ 5- Mashburn, Jr. J/ 10- House J/ 15- Toppin J/ 21- Forsling S/	02:28	6-6	0	2.4324	4	0	0	1	2.0000
0- Baker Jr. J/ 5- Mashburn, Jr. J/ 10- House J/ 15- Toppin J/ 22- Amzil M/	02:13	1-4	-3	0.4511	1	0	1	0	0.2907
0- Baker Jr. J/ 5- Mashburn, Jr. J/ 10- House J/ 22- Amzil M/ 23- Joseph N/	02:11	4-2	2	1.8321	2	1	0	0	0.8403
2- Dent D/ 3- Washington T/ 5- Mashburn, Jr. J/ 15- Toppin J/ 22- Amzil M/	02:07	2-6	-4	0.9449	1	0	0	1	0.6667
0- Baker Jr. J/ 5- Mashburn, Jr. J/ 10- House J/ 12- Mushila I/ 23- Joseph N/	02:05	5-2	3	2.4000	1	0	0	1	1.6667
2- Dent D/ 5- Mashburn, Jr. J/ 10- House J/ 15- Toppin J/ 22- Amzil M/	01:24	2-4	-2	1.4286	0	0	0	0	1.0000
0- Baker Jr. J/ 5- Mashburn, Jr. J/ 10- House J/ 12- Mushila I/ 15- Toppin J/	00:55	4-3	1	4.3636	0	0	0	0	2.1277
3- Washington T/ 5- Mashburn, Jr. J/ 10- House J/ 12- Mushila I/ 15- Toppin J/	00:52	0-2	-2	0.0000	0	0	0	0	0.0000
0- Baker Jr. J/ 2- Dent D/ 5- Mashburn, Jr. J/ 15- Toppin J/ 22- Amzil M/	00:44	2-0	2	2.7273	0	2	0	0	1.5152
0- Baker Jr. J/ 2- Dent D/ 5- Mashburn, Jr. J/ 22- Amzil M/ 23- Joseph N/	00:39	0-3	-3	0.0000	0	0	0	0	0.0000
3- Washington T/ 5- Mashburn, Jr. J/ 10- House J/ 15- Toppin J/ 22- Amzil M/	00:36	1-1	0	1.6667	1	0	0	0	0.6944
0- Baker Jr. J/ 2- Dent D/ 10- House J/ 22- Amzil M/ 23- Joseph N/	00:31	0-0	0	0.0000	0	0	0	0	0.0000



Officials: Verne Harris, Michael Irving, Greg Nixon

San Diego St.

Lineup	Time	Score	Score Diff	Pts/Min	Reb	Stl	Tov	Ass	PPP
3- Parrish M/ 4- Pal J/ 5- Butler L/ 12- Trammell D/ 13- LeDee J/	17:02	26-33	-7	1.5264	8	2	2	5	1.0417
5- Butler L/ 13- LeDee J/ 14- Waters R/ 21- Byrd M/ 25- Saunders E/	04:54	10-5	5	2.0408	9	0	2	2	1.0246
3- Parrish M/ 4- Pal J/ 12- Trammell D/ 13- LeDee J/ 14- Waters R/	04:39	9-5	4	1.9355	4	1	2	3	1.3314
12- Trammell D/ 13- LeDee J/ 14- Waters R/ 21- Byrd M/ 25- Saunders E/	04:21	9-4	5	2.0690	6	0	2	1	1.0664
3- Parrish M/ 5- Butler L/ 12- Trammell D/ 13- LeDee J/ 25- Saunders E/	03:07	1-4	-3	0.3209	4	0	2	0	0.2252
3- Parrish M/ 5- Butler L/ 21- Byrd M/ 25- Saunders E/ 40- Heide M/	03:06	4-9	-5	1.2903	3	0	0	2	0.8000
4- Pal J/ 5- Butler L/ 12- Trammell D/ 13- LeDee J/ 14- Waters R/	01:14	2-6	-4	1.6107	2	0	0	0	1.0000
5- Butler L/ 12- Trammell D/ 13- LeDee J/ 14- Waters R/ 25- Saunders E/	00:50	0-0	0	0.0000	0	0	0	0	0.0000
4- Pal J/ 5- Butler L/ 13- LeDee J/ 14- Waters R/ 21- Byrd M/	00:23	0-1	-1	0.0000	2	0	0	0	0.0000
3- Parrish M/ 12- Trammell D/ 13- LeDee J/ 14- Waters R/ 25- Saunders E/	00:19	0-1	-1	0.0000	0	0	0	0	0.0000
5- Butler L/ 14- Waters R/ 21- Byrd M/ 25- Saunders E/ 40- Heide M/	00:04	0-0	0	0.0000	0	0	0	0	0.0000