



# BOISE STATE™

## WOMEN'S BASKETBALL



@BroncoSportsWBB



@boisestatewbb



Boise State Women's Basketball

### GAME INFORMATION

|          |                      |
|----------|----------------------|
| Date     | March, 2025          |
| Time     | 3 p.m. MT            |
| Location | Las Vegas, Nev.      |
| Facility | Thomas & Mack Center |
| Watch    | MW Network           |
| Listen   | KBOI 670 AM          |
| History  | Boise State 47-22    |

### THE MATCHUP

Nevada  
Wolf PackBoise State  
Broncos

### 2024-25 STATS

|       |                 |       |
|-------|-----------------|-------|
| 11-20 | RECORD          | 17-14 |
| 6-12  | CONF. RECORD    | 7-11  |
| 8-8   | HOME            | 13-3  |
| 3-9   | ROAD            | 2-8   |
| 0-3   | NEUTRAL         | 2-3   |
| 62.8  | SCORING OFFENSE | 70.0  |
| 66.1  | SCORING DEFENSE | 66.0  |
| -3.3  | SCORING MARGIN  | +4.0  |
| 39.4% | FG% OFFENSE     | 42.6% |
| 42.7% | FG% DEFENSE     | 40.6% |
| 28.9% | 3FG % OFFENSE   | 34.0% |
| 30.3% | 3FG % DEFENSE   | 31.1% |
| 51.   | 3FG/GAME        | 7.2   |
| 74.7% | FT %            | 74.7% |
| 36.2  | REBOUNDS        | 36.5  |
| +2.0  | REBOUND MARGIN  | +1.6  |
| 11.8  | ASSISTS         | 15.0  |
| 15.1  | TURNOVERS       | 14.5  |
| 6.6   | STEALS          | 7.0   |
| 2.1   | BLOCKS          | 5.3   |

### TEAM LEADERS

|                          |                          |
|--------------------------|--------------------------|
| <b>Points Per Game</b>   | <b>Points Per Game</b>   |
| Lexie Givens.....12.6    | Tatum Thompson.....13.2  |
| <b>Rebounds Per Game</b> | <b>Rebounds Per Game</b> |
| Lexie Givens.....6.9     | Tatum Thompson.....3.0   |
| <b>Assists Per Game</b>  | <b>Assists Per Game</b>  |
| Dymonique Maxie.....2.4  | Mary Kay Naro.....4.2    |
| <b>Steals Per Game</b>   | <b>Steals Per Game</b>   |
| Dymonique Maxie.....2.0  | Two with.....1.2         |
| <b>Blocks Per Game</b>   | <b>Blocks Per Game</b>   |
| Audrey Roden.....0.5     | Abby Muse.....2.1        |

### BRONCO QUICK FACTS & PROGRAM HISTORY



#### Boise State Broncos (17-14, 7-11 MW)

|                              |                |                          |                 |
|------------------------------|----------------|--------------------------|-----------------|
| <b>Head Coach</b>            | Gordy Presnell | <b>Founded</b>           | 1932            |
| <b>Year at Boise State</b>   | 20th           | <b>Conference</b>        | Mountain West   |
| <b>Record at Boise State</b> | 372-255        | <b>First Year of WBB</b> | 1970-71         |
| <b>Career Record</b>         | 768-382        | <b>NCAA Appearances</b>  | 7               |
| <b>Location</b>              | Boise, Idaho   | <b>Arena</b>             | ExtraMile Arena |
| <b>Enrollment</b>            | 27,250         | <b>Capacity</b>          | 12,380          |

### TOP STORYLINES

- Gordy Presnell holds a 20-8 all-time record at the MW Conference Tournament. Don Flanagan holds the conference record with 21 conference tournament victories.
- The 2024-25 campaign marks the final season for the trio of fifth-years Elodie Lalotte, Abby Muse and Mary Kay Naro. The trio has played 36.0% of the team's total minutes since joining the roster in 2020-21.
- Mary Kay Naro paces the trio with 148 starts in all 148 games she has played and has only missed three games in her career. Abby Muse has started 142 times in 151 career games, while Elodie Lalotte has made 92 starting appearances in 147 games.
- Boise State is 3-0 all-time against Nevada on a neutral floor. The Broncos hold a 47-22 all-time advantage against Nevada.
- The two teams last met in the MW Tournament on March 11, 2019, with the Broncos winning 72-67.
- Boise State is looking for its 850th all-time win in program history, entering the tournament with a 849-666 (56.0%) mark.
- The Broncos are eighth in the nation averaging 28.7 bench points per game. The Broncos have scored 20+ bench points in all but five games, have scored 30+ points from their reserves in 14 games, and have totaled 40+ bench points in five contests.
- The Broncos have had 9+ players in score in five consecutive games.

### 2024-25 SCHEDULE

| Date     | Opponent                  | Result        |
|----------|---------------------------|---------------|
| Nov. 4   | EASTERN OREGON            | W, 87-57      |
| Nov. 10  | COLORADO                  | W, 50-47      |
| Nov. 14  | UC RIVERSIDE              | W, 72-57      |
| Nov. 18  | COLLEGE OF IDAHO          | W, 84-32      |
| Nov. 21  | at San Francisco          | W, 59-57      |
| Nov. 24  | WEBER STATE               | W, 96-46      |
| Nov. 29  | vs. Illinois State#       | W, 79-76      |
| Nov. 30  | vs. No. 12 West Virginia# | L, 82-47      |
| Dec. 1   | vs. Butler#               | L, 70-64      |
| Dec. 6   | UTAH TECH                 | W, 90-56      |
| Dec. 8   | SAN DIEGO                 | W, 76-59      |
| Dec. 18  | vs. Furman%               | W, 74-65      |
| Dec. 19  | vs. North Dakota State%   | L, 70-66      |
| Dec. 29  | at San Diego State*       | L, 74-59      |
| Jan. 1   | AIR FORCE*                | W, 66-55      |
| Jan. 4   | UNLV*                     | L, 61-57      |
| Jan. 8   | at Utah State*            | W, 82-77      |
| Jan. 11  | at Fresno State*          | L, 68-62      |
| Jan. 15  | SAN JOSE STATE*           | W, 93-64      |
| Jan. 18  | NEVADA*                   | W, 61-53      |
| Jan. 21  | at Colorado State*        | L, 79-70      |
| Jan. 28  | NEW MEXICO*               | W, 89-80      |
| Feb. 1   | at Wyoming*               | L, 79-45      |
| Feb. 5   | at Nevada*                | L, 69-61      |
| Feb. 8   | COLORADO STATE*           | L, 67-61      |
| Feb. 13  | at New Mexico*            | L, 88-83 (OT) |
| Feb. 15  | FRESNO STATE*             | L, 67-63      |
| Feb. 18  | WYOMING*                  | W, 78-73      |
| Feb. 26  | at UNLV*                  | L, 83-53      |
| March 1  | at Air Force*             | L, 75-68      |
| March 4  | UTAH STATE*               | W, 72-59      |
| March 9  | Nevada (1st Rd.)          | 3 p.m.        |
| March 10 | MW Championship (QF)      | TBD           |
| March 11 | MW Championship (SF)      | TBD           |
| March 12 | MW Championship Game      | TBD           |

Home Matches in **BOLD/CAPS**

# Gulf Coast Showcase

% Husky Classic

\* Mountain West Game

All Times Mountain

Women's Basketball Media Relations Contact:

Alex Semadeni, Associate Director of Athletic Media Relations

Phone: (970) 237-1634 | Email: alexsemadeni@boisestate.edu

SERIES HISTORY

Series vs. Nevada

|                      |                   |
|----------------------|-------------------|
| Overall.....         | 47-22             |
| Home .....           | 26-8              |
| Road .....           | 18-14             |
| Neutral .....        | 3-0               |
| Current Streak ..... | L1                |
| Last Meeting .....   | L, 69-61          |
|                      | .....Feb. 5, 2025 |

Broncos Suffer Road Loss to Nevada

**RENO, Nev.** – Boise State women’s basketball dropped its second-straight road contest, falling to Nevada 69-61 on Wednesday night at the Lawlor Events Center.

The Wolf Pack (10-14, 5-6 Mountain West), who trailed by eight at halftime, outscored the Broncos (15-9, 5-6 MW) 44-28 in the second half. Nevada shot 48.3% from the field in the final half, compared to an 31.0% shooting performance from the Blue and Orange.

Four Broncos scored in double figures in the loss. Dani Bayes, Natalie Pasco and Tatum Thompson netted 13 points each, while Elodie Lalotte chipped in 12 points.

Five different Broncos scored in the opening frame as the squad held a 15-13 lead. Thompson and Bayes came out in the second quarter on fire, combining to score nine of the Broncos’ first 12 points of the frame to take a 27-23 lead midway through the period. Boise State locked in defensively, holding the Wolf Pack scoreless for the final five minutes of the half to hold a 33-25 halftime advantage.

SPORTS INFO

**Alex Semadeni (Primary)**  
970-237-1634  
alexsemadeni@boisestate.edu

**Nick Gruber (Secondary)**  
208-401-5295  
nicholasgruber@boisestate.edu

The Boise State locker room is closed to the media. Interview requests should be directed to Alex Semadeni or Nick Gruber by the five-minute mark of the fourth quarter.

Head coach Gordy Presnell and select student-athletes will be made available following a 5-minute cooling off period. Postgame press conferences will not be held if no media is present.

Media wishing to interview coaches and/ or student-athletes on non-gamedays must contact Alex Semadeni or Nick Gruber at least 24 hours in advance.

GAME NOTES

- Natalie Pasco and Tatum Thompson both scored 20+ points against Utah State in the regular season finale.The Broncos have had five games this season with two 20+ scorers in the same game, the most in a single-season in program history.
- Tatum Thompson scored 21 points off the bench against Utah State on Tuesday, marking the third time this season a Bronco has scored 20+ points off the bench this season. Natalie Pasco did so against Furman (Dec. 18) and Fresno State (Jan. 11).
- Boise State has had back-to-back games where a player scores 10+ points in the 4th quarter. Tatum Thompson scored 10 points in the 4th quarter against Air Force while Natalie Pasco scored 11 against Utah State.
- The Broncos have outrebounded their opponents by 10+ in back-to-back games. Boise State outrebounded Air Force 36-26 on March 1 and Utah State 45-30 on March 4.
- The Broncos’ junior class of Dani Bayes, Mya Hansen, Natalie Pasco and Tatum Thompson account for 67.4% of the team’s scoring in conference play.
- Boise State is 1-1 against Power 4 teams this season. The Broncos defeated Colorado, 50-47, on Nov. 10 and fell to No. 12 West Virginia, 82-47, on Nov. 30.
- The Broncos have defeated Power 5/4 opponents in back-to-back seasons. Boise State defeated Rutgers, 68-65, on Nov. 25, 2023.
- The Broncos are one of two Mountain West schools with three active 1,000 point scorers (Wyoming). Abby Muse, Elodie Lalotte and Natalie Pasco all achieved the feat this season.
- Boise State shot 77.5% (214-of-276) from the free throw line in MW play, the highest mark the team has shot in conference games in program history. The previous record was 74.7% (230-of-308), set in the 1988-89 season.
- Boise State is the only team in the MW that has two active players (Abby Muse, Mary Kay Naro) in the top five in program history in career blocks.
- Tatum Thompson has scored 20+ points 6 times in her career. 5 of those games have occurred this season.
- Tatum Thompson is one of 11 players in program history to have converted 100+ free throws in a single season, entering the tournament with 104.
- Tatum Thompson has recorded all seven of her career double-doubles this season.
- Tatum Thompson is shooting 51.9% from the floor in league play, the fourth-highest in the MW.
- Tatum Thompson’s 8.2 rebounds per game in MW play is the fourth-highest among MW players.
- Tatum Thompson sits in ninth place among MW players with 15.2 ppg in MW play.
- Tatum Thompson has recorded three games on the season with 20+ points and 10+ rebounds.
- Tatum Thompson was named the MW Player of the Week on Jan. 20. The award marks the second time Thompson has earned the accolade in her career, after taking home the honor on Feb. 5 last season.
- Tatum Thompson recorded four consecutive double-doubles from Jan. 11-21, marking the first time a Bronco has done so since Shalen Shaw in the 2015-16 season. The junior was a rebound short of becoming the first player under Gordy Presnell to record five-straight double-doubles.
- Tatum Thompson has shot 104-of-126 (82.5%) from the free throw line on the season. The junior shot 71.1% as a sophomore and 51.5% as a freshman, and has a career free throw percentage of 74.5%.
- Natalie Pasco is shooting 43.0% from three, good for 23rd nationally.
- Natalie Pasco leads the MW in 3-point percentage (43.0%).
- Natalie Pasco moved into third place in program history against Utah State, finishing the game with 194 career long balls. The junior passed Brooke Pahukoa (2013-17), who made 193.
- Natalie Pasco is ranked 13th with 13.5 ppg in league play.
- Natalie Pasco has scored 20+ points 14 times in her career. Five of those games have occurred this season.
- Natalie Pasco is six 3-pointers away from becoming the third Bronco in program history to eclipse 200 career 3-pointers.
- Natalie Pasco has made 5+ 3-pointers eight times in her career, tied with Brooke Pahukoa (2015-17) for the third-most in program history. Nadia Begay (2005-07) is second with nine.

## GAME NOTES

- Natalie Pasco has made 4+ 3-pointers in eight games on the season.
- Natalie Pasco has had 21 games with 4+ 3-pointers in her career, the second-most in program history.
- Natalie Pasco scored 20+ points in 3 consecutive games (Jan. 8 vs. Utah State, Jan. 11 vs. Fresno State, Jan. 15 vs. San Jose State). She is the first Bronco to score 20+ in three contests since A'Shanti Coleman did so in five-straight games in the 2019-20 season.
- Natalie Pasco will appear in her 100th career game against Nevada.
- Mya Hansen is currently the program's all-time career free throw percentage leader at 85.5%.
- Mya Hansen has made 35 of her 38 free throw attempts in MW play for a league-best 92.1%.
- Mya Hansen has scored 20+ points six times in her career.
- Mya Hansen has made 3+ 3-pointers five times this season and 14 times in her career.
- Abby Muse is the only player in MW history that has over 1,000 rebounds and 300 blocks in her career. She is one of two active Division I players with those career numbers along with Kansas State's Ayoka Lee (1,233 rebounds, 351 blocks).
- Abby Muse is ranked 17th nationally with 65 total blocks and 26th nationally with 2.1 blocks per game. As a team, Boise State is ranked 11th nationally with 5.3 blocks per game.
- Abby Muse is one of three players in MW history with over 300 career blocked shots. She joins Fresno State's Bego Faz Davalos (346 blocks; 2014-17) and New Mexico's Jordan Adams (344 blocks; 1999-03).
- Abby Muse enters the contest in third place in MW history with 1,107 career boards.
- Abby Muse is the program leader in both rebounds (1,107) and blocked shots (327).
- Abby Muse has 60 blocks on the year, which is good for 5th place on the program's single-season leaderboard.
- Abby Muse broke the program's all-time career rebounding record on Jan. 4 against UNLV. She broke a 43-year-old record set by Karla Meier (1977-82), who pulled down 1,025 rebounds in her career.
- Abby Muse enters the game with 322 career blocks, nearly 200 more than Stephanie Block (1996-2000), who is second in program history with 142 blocks.
- Abby Muse is 1 of 5 players in MW history to eclipse 1,000 career rebounds.
- Abby Muse is one of two players in program history with over 1,000 points and 1,000 rebounds (Karla Meier; 1977-82).
- Abby Muse has blocked 6+ shots 10 times in her career. She last did so on Jan. 15 against San Jose State.
- Abby Muse blocked 5 shots against Utah State on March 4, marking her 5th game this season and 18th game in her career with 5+ blocks.
- Abby Muse has three games of 5+ blocks in league play this season. The rest of the league combined has three.
- Abby Muse has more multiblock games (87) than not (64) in her career. The fifth year has had 15 multiblock games this season.
- Abby Muse is one of three players in MW history to record 7+ blocks in back-to-back games after doing so against Colorado (Nov. 10) and UC Riverside (Nov. 14). Muse, who is up to four career games with 7+ blocks, joined Bego Faz Davalos (twice) and Paris Johnson (March 2009).
- Abby Muse is the only player that has started all 31 games on the season.
- Abby Muse has a sister, Amanda, who is sophomore for UCLA women's basketball.
- Mary Kay Naro is ranked 18th nationally with a 2.6 assist-to-turnover ratio.
- Mary Kay Naro is second in program history with 598 career assists. The fifth year is chasing the program record set by Yaiza Rodriguez (2013-17), who dished out 616 assists.
- Mary Kay Naro has dished out 5+ assists in six of her last seven games.
- Mary Kay Naro has dished out 100+ assists in all five seasons she has played.
- Mary Kay Naro and Yaiza Rodriguez are the only two players in program history to dish out 100+ assists in four consecutive seasons.
- Mary Kay Naro has recorded 5+ assists in 15 games on the season and 57 games in her career.

## 2024-25 BRONCO STAFF

**Head Coach**.....Gordy Presnell  
 Year at Boise State .....20th  
 Record at Boise State.....372-255 (.593)  
 Career Record .....768-382 (.668)  
 Alma Mater .....Northwest Nazarene

**Assistant Coach**.....Heather Sower  
 Year at Boise State .....23rd  
 Alma Mater .....Boise State

**Assistant Coach**.....Cariann Ramirez  
 Year at Boise State .....Ninth (coach)  
 .....15th (overall)  
 Alma Mater .....Boise State

**Assistant Coach**.....Mike Petrino  
 Year at Boise State .....Fourth  
 Alma Mater .....Montana State Billings

**Assistant Coach**.....Jackie Robinson  
 Year at Boise State .....First  
 Alma Mater .....Evergreen State

**Director of Ops**.....Bree Blanding  
 Year at Boise State .....Second  
 Alma Mater .....Coastal Carolina

**Graduate Assistant**.....Maggie Cornelius  
 Year at Boise State .....First

**Sports Performance**.....Justin Huynh  
 Year at Boise State .....First

**Athletic Trainer**.....Matt Schofield  
 Year at Boise State .....Second

## MW STANDINGS

| TEAM                        | MW          | OVR            |
|-----------------------------|-------------|----------------|
| 1. UNLV .....               | 16-2        | (24-6)         |
| 2. Wyoming.....             | 14-4        | (20-10)        |
| 3. Colorado State.....      | 13-5        | (22-9)         |
| 4. San Diego State.....     | 11-7        | (22-9)         |
| 4. New Mexico.....          | 11-7        | (18-13)        |
| 6. Fresno State.....        | 8-10        | (17-14)        |
| 7. Air Force .....          | 7-11        | (17-13)        |
| <b>7. Boise State .....</b> | <b>7-11</b> | <b>(17-14)</b> |
| 9. Nevada .....             | 6-12        | (11-20)        |
| 10. Utah State .....        | 3-15        | (10-21)        |
| 10. San Jose State .....    | 3-15        | (4-26)         |

## GENERAL INFO

Name.....Boise State University  
 Location.....Boise, Idaho  
 Founded.....1932  
 Enrollment.....27,270  
 Nickname.....Broncos  
 Colors.....Blue and Orange  
 Affiliation.....NCAA Division I  
 Conference.....Mountain West  
 President.....Dr. Marlene Tromp  
 Director of Athletics.....Jeremiah Dickey  
 Arena Name.....ExtraMile Arena  
 Elevation (campus level).....2,704 Feet  
 Opened.....Fall 1982  
 Capacity.....12,380

Women's Basketball Media Relations Contact:

Alex Semadeni, Associate Director of Athletic Media Relations

Phone: (970) 237-1634 | Email: alexsemadeni@boisestate.edu

LAST TIME OUT

Pasco, Thompson Lift  
Broncos Past Aggies

**BOISE, Idaho** – Natalie Pasco and Tatum Thompson combined for 34 points in the second half to lead Boise State women's basketball past Utah State, 72-59, in the regular season finale on Tuesday.

With the Broncos (17-14, 7-11 Mountain West) leading the Aggies (4-26, 3-15 MW) by three entering the final frame, Pasco drained three 3-pointers and Thompson added nine points to lead the Blue and Orange to a 26-16 advantage over the final ten minutes of action.

The duo combined to score 46 in the regular season finale for the Broncos. Pasco totaled 25 points, draining four 3-pointers and shooting 9-of-18 from the floor, while Thompson added 21 points, eight rebounds and four assists. The game marked the fifth time a Bronco duo has each scored 20+ points on the season, the most in program history.

Top Broncos

- **Natalie Pasco** scored 19 of her 25 points in the second half. The junior shot 9-of-18 from the floor and made four 3-pointers on the night.
- **Tatum Thompson** shot 8-of-14 from the field to finish with 21 points. The junior added eight rebounds and four assists in the contest.

Notables

- **Natalie Pasco** and **Tatum Thompson** combined to score 34 second half points. Pasco totaled 19 in the second half while Thompson had 15.
- Boise State won its eighth consecutive contest against Utah State. The Broncos have won four-straight against the Aggies at ExtraMile Arena.
- Boise State finishes the season with a 13-3 record at home.
- Pasco moved into third place in program history with 194 career 3-pointers.

MW PRESEASON POLL

| TEAM (1ST PLACE VOTES)                              | POINTS     |
|---|------------|
| 1. UNLV (21)  | 298        |
| 2. Wyoming (3)                                      | 251        |
| 3. Colorado State (4)                               | 248        |
| <b>4. Boise State</b>                               | <b>221</b> |
| 5. San Diego State (2)                              | 218        |
| 6. New Mexico                                       | 172        |
| 7. Nevada   | 125        |
| 8. Air Force  | 116        |
| 9. Fresno State                                     | 109        |
| 10. San Jose State                                  | 60         |
| 11. Utah State                                      | 41         |
| * selected by head coaches and select media members |            |

GAME NOTES

- Mary Kay Naro moved into fifth place in program history with 101 career blocks. Of the five, Naro is the only player under 6'0.
- Mary Kay Naro is third among MW players in assist-to-turnover ratio (2.6) and fourth in total assists (125) and assists per game (4.2).
- Mary Kay Naro is 1 of 3 players in the MW that has dished out 11 assists in a game this season (Kiara Jackson, UNLV; Jo Huntimer, Air Force).
- Mary Kay Naro is the only player in program history with over 750 points, 500 rebounds and 500 assists over the course of her career.
- Mary Kay Naro moved into the top 10 in program history with 125 assists on the season.
- Mary Kay Naro enters the MW Tournament with 148 games played.
- Dani Bayes has hit 3+ 3-pointers in a game nine times this season and 18 times in her career.
- Dani Bayes has reached double figures 14 times on the year and 35 times in her career.
- Dani Bayes is five 3-pointers away from 150 in her career.
- Dani Bayes enters the MW Tournament with 98 career games played.
- Elodie Lalotte enters the MW Tournament with 147 career games played.
- 2 of freshman Teryn Gardner's 5 double-digit scoring performances have come against Power 4 opponents.
- Natalie Pasco's 25 points against Utah State marked the fifth time this season a Bronco has scored 25+ points. Pasco has done so three times while Tatum Thompson has done so twice.
- A Bronco has scored over 20 points 10 times on the season. Tatum Thompson and Natalie Pasco have done so four times while Mya Hansen and Dani Bayes have each done so once.
- Natalie Pasco and Tatum Thompson each lead the team with 22 games in double figures on the season.
- Natalie Pasco has scored in double figures a team-high 61 times in her career. Abby Muse and Elodie Lalotte have done so 49 times.
- Eight different Broncos have recorded at least one game with over 15 points: Tatum Thompson (11 times), Natalie Pasco (nine times), Mya Hansen (five times), Dani Bayes (three times), Elodie Lalotte (twice), Abby Muse (twice), Libby Hutton and Josee Steadman.
- Boise State has had eight different single-game leading scorers: Tatum Thompson (12), Natalie Pasco (10), Mya Hansen (4), Elodie Lalotte (3), Dani Bayes (2), Libby Hutton (2), Abby Muse (2) Teryn Gardner (1).
- Gordy Presnell is one of five active Division I head coaches with over 750 wins, holding a 768-382 head coaching record.
- Gordy Presnell's 768 wins are 22nd all-time among Division I head coaches all-time. He is tied for 29th all-time among NCAA coaches.
- Gordy Presnell has made up 43.7% of total victories in Boise State women's basketball history.
- Gordy Presnell has 262 wins as a MW head coach, the second-most in league history.
- Gordy Presnell picked up his 220 home victory as the head coach of Boise State against Wyoming on Feb. 18. He currently has 221.
- Gordy Presnell has won 20+ games in a season eight times as the head coach of Boise State.
- Gordy Presnell has taken the Broncos to five NCAA National Tournaments (2007, 2015, 2017, 2018, 2019, 2020). The team qualified for a sixth tournament in 2020 but the tournament was canceled due to Covid-19.
- Gordy Presnell was named the 2018-19 MW Coach of the Year.
- Gordy Presnell is the longest-tenured coach in the MW as he enters his 20th season. Presnell is also the longest-tenured among Boise State head coaches.
- Gordy Presnell is the winningest coach at two schools (Seattle Pacific, Boise State).
- Eight of Boise State's 11 20+ win seasons have come under head coach Gordy Presnell.
- Boise State is 13-3 at home this season, marking the 15th time under head coach Gordy Presnell that the Broncos have won 10+ home games in a season.
- The Broncos have won 10+ home games in each of the past three seasons.



## GAME NOTES

- Boise State is one of three Division I schools that have had the same men's and women's basketball head coaches in each of the last 15 seasons (Creighton, Northern Iowa)
- Assistant coach Heather Sower begins her 23rd season as an assistant coach for the Broncos. Cariann Ramirez enters her 15th season with the program and 9th as an assistant coach. Both are alumna of the program.
- Head coach Gordy Presnell is in charge of the offense, while assistant coach Cariann Ramirez is responsible for the defense. Assistant coach Heather Sower is responsible for the post play while assistant coach Mike Petrino is primarily responsible for the guards. Jackie Robinson works on the "tweeners".
- Assistant coach Heather Sower recorded her 400th win as an assistant coach with the program against Wyoming on Feb. 18. Sower, who played for the Broncos from 1990-94, has a 401-314 as an assistant coach with the program.
- Jackie Robinson joined as the fourth assistant coach after spending the previous five seasons as the head coach at Evergreen State.
- The Broncos dish out 15.0 assists per game, the second-most in the MW.
- Boise State is ranked third among MW teams in scoring offense (70.0 ppg).
- The Broncos have recorded 40+ points in the paint in three MW games on the season. Boise State notched 42 points in the paint against San Jose State (Jan. 15) and Fresno State (Feb. 15) and 40 points against Wyoming on Feb. 18.
- Boise State's 28 assists against New Mexico on Feb. 13 are the most a MW team has recorded in a conference game this season.
- The Broncos have outrebounded their opponents by 15+ six times on the season.
- Boise State has dished out 20+ assists in a game eight times on the year, the most in a season since 2019-20 (13 times).
- The Broncos have made 10+ 3-pointers five times on the season.
- Boise State currently has five players averaging over 80% from the charity stripe on the season (min. 10 attempts): Teryn Gardner - 100% (14-of-14), Mya Hansen - 89.1% (41-of-46), Natalie Pasco - 87.2% (41-of-47), Mary Kay Naro - 85.3% (29-of-34), and Tatum Thompson - 82.5% (104-of-126).
- Boise State has scored 90+ points against three Division I opponents this season, marking the first time it has done so since the 2014-15 season. The Broncos scored 89 points against New Mexico on Feb. 13.
- The Broncos are averaging 29.7 points per game from the paint. Boise State has scored over 30 points in the paint in 16 games on the season and has five games with 40+ points in the paint.
- The Broncos have scored a season-high 44 points in the paint three different times.
- Boise State has blocked 7+ shots in four MW games this season. All other MW teams have combined to do so twice.
- The Broncos have won all 11 games in which they held their opponent under 60 points.
- Boise State has forced 20+ turnovers in seven games on the season. Last year the Broncos had four such games.
- Boise State matched a season-high with 17 second chance points against Wyoming. The Broncos have done so four times this season (at Utah State, San Jose State, New Mexico).
- Boise State has blocked 10+ shots in four games this season. The Broncos blocked 10 shots against Colorado (Nov. 10), North Dakota State (Dec. 19) and Air Force (Jan. 1). Last season, Boise State blocked 10+ shots in five contests.
- The Broncos committed 25 turnovers against Air Force and came out victorious, marking the second time this season Boise State has committed 25+ turnovers and won. Boise State committed 25 turnovers in a 50-47 win over Colorado on Nov. 10.
- Boise State reached 10 wins in non-conference play for the first time since the 2016-17 season.
- Boise State has picked up five wins when trailing at halftime this season (Colorado, vs. San Francisco, Nevada, New Mexico, Wyoming).
- The Broncos have held their opponent under 50 points three times on the season (Colorado - 47; College of Idaho - 32; Weber State - 46).
- Boise State has won two games by 50+ points on the season (Weber State - 50; College of Idaho - 52).
- Boise State is 9-10 in single-digit games.
- Seven positions in the top ten of the program's all-time leaderboard are comprised of current players. Abby Muse is the program block leader (327) and rebound leader (1,107). Mary Kay Naro is second in assists (598) and is fifth in blocks (102). Natalie Pasco sits in third place in career 3-pointers (194) while Elodie Lalotte is sixth in total rebounds (786) and ninth in career field goals (494).
- Four Broncos are in the program record books for career 3-pointers. Natalie Pasco is currently third (194), Dani Bayes is tied for 11th (145), Mya Hansen is 17th (110) while Mary Kay Naro is 23rd (87).
- The Broncos have three players on their current roster in the program record book for career points. Abby Muse is 15th with 1,165 points, Natalie Pasco is 18th with 1,322 points and Elodie Lalotte is 1,122 points.
- Last season, Boise State tied for fourth in the MW standings in 2023-24. Earning a six-seed, the Broncos advanced to the semifinal round of the MW Tournament for the first time since 2021.
- The Broncos competed in the WNIT for the third time in program history last season. Boise State previously appeared in the WNIT in 1998 and 2008.
- Boise State women's basketball had a 3.8 GPA in the fall semester, the best semester in program history.
- Over the summer, Boise State women's basketball team finished in the Women's Basketball Coaches Association Academic Top 25 Honor Roll for the third consecutive year. The 2023-24 Bronco roster finished No. 22 in the nation, following a No. 10 finish in 2022-23 and a No. 7 finish in 2021-22.
- Boise State has a pair of sisters on the team in Mary Naro and Mackenzie Naro. Their grandpa is NBA Hall of Fame coach Rick Adelman and their uncle, David Adelman, is an NBA assistant coach for the Denver Nuggets. The sisters also both played for their mother, Kathy, at Beaverton High School.
- The Broncos have three Australian players on the team - junior Dani Bayes, freshman Libby Hutton and freshman Milly Sharp.
- Boise State record by jersey color: Black (1-4), Blue (2-3), Gray (2-1), Orange (4-0), White (8-6)

Women's Basketball Media Relations Contact:

Alex Semadeni, Associate Director of Athletic Media Relations

Phone: (970) 237-1634 | Email: alexsemadeni@boisestate.edu

SEASON AND CAREER-HIGHS

#0 Tatum THOMPSON

6-1 | JR | G/F  
Woodinville, Wash. (Woodinville HS)

Season & Career Highs

|         |    |                                  |
|---------|----|----------------------------------|
| Points  | SH | 25; twice                        |
|         | CH | 25; twice                        |
| Rebs    | SH | 16; at Fresno State (1-11-25)    |
|         | CH | 16; at Fresno State (1-11-25)    |
| Assists | SH | 5; New Mexico (1-28-25)          |
|         | CH | 6; vs. San Diego State (3-12-24) |
| Steals  | SH | 4; twice                         |
|         | CH | 4; twice                         |
| Blocks  | SH | 3; three times                   |
|         | CH | 3; four times                    |
| FGs     | SH | 11; at Fresno State (1-11-25)    |
|         | CH | 11; at Fresno State (1-11-25)    |
| 3FGs    | SH | 3; Weber State (11-24-24)        |
|         | CH | 3; twice                         |
| FTs     | SH | 11; San Jose State (1-15-25)     |
|         | CH | 11; San Jose State (1-15-25)     |
| Mins    | SH | 35; Colorado State (2-8-25)      |
|         | CH | 35; Colorado State (2-8-25)      |

Quick Notes

- Named Mountain West Player of the Week on Jan. 20
- Shot 51.9% from the floor in MW games, the fourth-highest in the conference
- Averaged 8.2 rebounds per game in league play, the fourth-most.
- Notched seven double-doubles in her career, all this season
- Named Miss Basketball by the Washington State Girls Basketball Coaches Association in high school

#1 Mya HANSEN

5-9 | JR | G  
Billings, Mont. (Billings Central Catholic HS)

Season & Career Highs

|         |    |                                |
|---------|----|--------------------------------|
| Points  | SH | 21; at Utah State (1-8-25)     |
|         | CH | 31; BYU (12-1-22)              |
| Rebs    | SH | 5; at Fresno State (1-11-25)   |
|         | CH | 7; three times                 |
| Assists | SH | 9; at Colorado State (1-21-25) |
|         | CH | 9; at Colorado State (1-21-25) |
| Steals  | SH | 2; at New Mexico (2-13-25)     |
|         | CH | 4; four times                  |
| Blocks  | SH |                                |
|         | CH |                                |
| FGs     | SH | 7; three times                 |
|         | CH | 8; BYU (12-1-22)               |
| 3FGs    | SH | 4; at Utah State (1-8-25)      |
|         | CH | 4; twice                       |
| FTs     | SH | 6; College of Idaho (11-18-24) |
|         | CH | 11; BYU (12-1-22)              |
| Mins    | SH | 33; twice                      |
|         | CH | 38; vs. Montana (3-20-24)      |

Quick Notes

- Currently owns best FT% in program history (85.5%)
- Shot 35-of-38 from the free throw line in league games (92.1%)
- Has scored 20+ points six times in her career
- Has made 3+ 3-pointers five times this season and 14 times in her career
- Named Gatorade Montana Player of the Year as a senior

#2 Linsey LOVROVICH

5-9 | SR | G  
Gig Harbor, Wash. (Peninsula HS)

Season & Career Highs

|         |    |                                      |
|---------|----|--------------------------------------|
| Points  | SH | 5; College of Idaho (11-18-24)       |
|         | CH | 12; Multnomah (11-7-22)              |
| Rebs    | SH | 2; twice                             |
|         | CH | 7; College of Idaho (11-6-23)        |
| Assists | SH | 2; Eastern Oregon (11-4-24)          |
|         | CH | 4; San Diego State (1-15-22)         |
| Steals  | SH | 2; Utah Tech (12-6-24)               |
|         | CH | 2; three times                       |
| Blocks  | SH |                                      |
|         | CH | 3; Rocky Mountain College (12-12-23) |
| FGs     | SH | 2; College of Idaho (11-18-24)       |
|         | CH | 5; Multnomah (11-7-22)               |
| 3FGs    | SH |                                      |
|         | CH | 2; twice                             |

|      |    |                               |
|------|----|-------------------------------|
| FTs  | SH | 2; Eastern Oregon (11-4-24)   |
|      | CH | 4; three times                |
| Mins | SH | 8; Utah State (3-4-25)        |
|      | CH | 22; San Diego State (1-15-22) |

Quick Notes

- 3x MW Scholar-Athlete (2021-22, 2022-23, 2023-24)
- 3x Academic All-MW (Spring 2022, 2023, 2024)
- Played in 28 games off the bench last season
- Averaged 9.1 minutes per game last year
- Also starred in volleyball in high school

#3 Josee STEADMAN

5-11 | R-JR | F  
Blackfoot, Idaho (Snake River HS)

Season & Career Highs

|         |    |                                  |
|---------|----|----------------------------------|
| Points  | SH | 17; at New Mexico (2-13-25)      |
|         | CH | 28; at Westminster (2-27-24)     |
| Rebs    | SH | 3; at New Mexico (2-13-25)       |
|         | CH | 8; UCCS (12-8-23)                |
| Assists | SH | 3; at New Mexico (2-13-25)       |
|         | CH | 4; Colorado Christian (11-20-23) |
| Steals  | SH |                                  |
|         | CH | 2; at Chadron State (1-12-24)    |
| Blocks  | SH | 2; at New Mexico (2-13-25)       |
|         | CH | 2; twice                         |
| FGs     | SH | 7; at New Mexico (2-13-25)       |
|         | CH | 10; at Westminster (2-27-24)     |
| 3FGs    | SH |                                  |
|         | CH | 8; at Westminster (2-27-24)      |
| FTs     | SH | 2; at New Mexico (2-13-25)       |
|         | CH | 3; Central Washington (11-3-24)  |
| Mins    | SH | 20; at New Mexico (2-13-25)      |
|         | CH | 32; twice                        |

Quick Notes

- Walk-on transfer from Colorado Mesa
- Scored 17 points in 20 minutes in an overtime loss to New Mexico on Feb. 13
- Hit eight 3-pointers against Westminster on Feb. 27, 2024
- Played for her father, Jeff, at Snake River HS
- Scored 1,726 points during high school career

#4 Dani BAYES

5-11 | JR | G  
Brisbane, Australia

Season & Career Highs

|         |    |                                   |
|---------|----|-----------------------------------|
| Points  | SH | 21; Wyoming (2-18-25)             |
|         | CH | 21; twice                         |
| Rebs    | SH | 5; four times                     |
|         | CH | 7; New Mexico (1-21-23)           |
| Assists | SH | 6; San Diego (12-8-24)            |
|         | CH | 6; twice                          |
| Steals  | SH | 3; three times                    |
|         | CH | 4; Weber State (11-13-23)         |
| Blocks  | SH |                                   |
|         | CH |                                   |
| FGs     | SH | 8; twice                          |
|         | CH | 8; three times                    |
| 3FGs    | SH | 4; New Mexico (1-28-25)           |
|         | CH | 5; at New Mexico (1-6-24)         |
| FTs     | SH | 3; Wyoming (2-18-25)              |
|         | CH | 4; vs. Montana (3-20-24)          |
| Mins    | SH | 29; twice                         |
|         | CH | 36; Eastern Washington (11-11-22) |

Quick Notes

- Scored in double figures 14 times on the year and 35 times in her career
- Tied for 11th in program history with 145 career 3-pointers
- Recorded her ninth game with 3+ 3-pointers against New Mexico (18 times in her career)
- MW All-Freshman Team (2022-23)
- Played for the Logan Thunder in Australia's NBL1 North

#5 Allie HUECKMAN

5-10 | R-JR | G  
Burns, Ore. (Burns HS)

Season & Career Highs

|        |    |                                |
|--------|----|--------------------------------|
| Points | SH | 9; Weber State (11-24-24)      |
|        | CH | 11; Evergreen State (12-12-22) |
| Rebs   | SH | 4; College of Idaho (11-18-24) |
|        | CH | 5; Evergreen State (12-12-22)  |

|         |    |                             |
|---------|----|-----------------------------|
| Assists | SH |                             |
|         | CH | 3; New Mexico (1-21-23)     |
| Steals  | SH |                             |
|         | CH | 2; Saint Mary's (12-10-22)  |
| Blocks  | SH |                             |
|         | CH |                             |
| FGs     | SH | 3; Weber State (11-24-24)   |
|         | CH | 4; twice                    |
| 3FGs    | SH | 3; Weber State (11-24-24)   |
|         | CH | 3; Weber State (11-24-24)   |
| FTs     | SH |                             |
|         | CH | 3; Utah State (2-18-23)     |
| Mins    | SH | 8; San Diego (12-8-24)      |
|         | CH | 19; Saint Mary's (12-10-22) |

Quick Notes

- Leads the team in 3-point percentage (46.7%)
- Has made seven 3-pointers this year.
- Three-sport athlete at Burns HS (volleyball and high jump)
- Named Burns HS Most Outstanding Female Athlete of the Year
- Named Eastern Oregon League Player of the Year

#6 Milly SHARP

5-9 | FR | G  
Ballarat, Australia

Season & Career Highs

|         |    |                                |
|---------|----|--------------------------------|
| Points  | SH | 4; College of Idaho (11-18-24) |
|         | CH | 4; College of Idaho (11-18-24) |
| Rebs    | SH | 3; twice                       |
|         | CH | 3; twice                       |
| Assists | SH | 3; College of Idaho (11-18-24) |
|         | CH | 3; College of Idaho (11-18-24) |
| Steals  | SH |                                |
|         | CH |                                |
| Blocks  | SH |                                |
|         | CH |                                |
| FGs     | SH | 2; College of Idaho (11-18-24) |
|         | CH | 2; College of Idaho (11-18-24) |
| 3FGs    | SH |                                |
|         | CH |                                |
| FTs     | SH | 2; twice                       |
|         | CH | 2; twice                       |
| Mins    | SH | 11; twice                      |
|         | CH | 11; twice                      |

Quick Notes

- Appeared in 25 of 31 games on the season
- Played for the Ballarat Miners in Australia's NBL1
- Represented the state of Victoria in six Australian National Championships, winning all but one
- Played netball in Australia

#9 Libby HUTTON

6-0 | FR | F  
Perth, Australia

Season & Career Highs

|         |    |                                      |
|---------|----|--------------------------------------|
| Points  | SH | 15; College of Idaho (11-18-24)      |
|         | CH | 15; College of Idaho (11-18-24)      |
| Rebs    | SH | 7; Colorado (11-10-24)               |
|         | CH | 7; Colorado (11-10-24)               |
| Assists | SH | 2; twice                             |
|         | CH | 2; twice                             |
| Steals  | SH | 4; vs. Illinois State (11-29-24)     |
|         | CH | 4; vs. Illinois State (11-29-24)     |
| Blocks  | SH | 2; vs. North Dakota State (12-19-24) |
|         | CH | 2; vs. North Dakota State (12-19-24) |
| FGs     | SH | 7; College of Idaho (11-18-24)       |
|         | CH | 7; College of Idaho (11-18-24)       |
| 3FGs    | SH |                                      |
|         | CH |                                      |
| FTs     | SH | 3; twice                             |
|         | CH | 3; twice                             |
| Mins    | SH | 18; vs. Illinois State (11-29-24)    |
|         | CH | 18; vs. Illinois State (11-29-24)    |

Quick Notes

- Scored in double figures twice off the bench
- Played for Perry Lakes in Australia's NBL1.
- Played on Western Australia's team at the U20 Australian Nationals

SEASON AND CAREER-HIGHS

#12 Mary Kay NARO

5-11 | 5TH | G  
Beaverton, Ore. (Beaverton HS)

Season & Career Highs

|         |    |                                  |
|---------|----|----------------------------------|
| Points  | SH | 11; vs. San Francisco (11-21-24) |
|         | CH | 19; at Utah State (1-7-23)       |
| Rebs    | SH | 7; twice                         |
|         | CH | 9; at UC Davis (11-17-22)        |
| Assists | SH | 11; vs. Furman (12-18-24)        |
|         | CH | 16; Utah State (2-18-21)         |
| Steals  | SH | 4; vs. Furman (12-18-24)         |
|         | CH | 4; Oregon Tech (11-15-21)        |
| Blocks  | SH | 3; UC Riverside (11-14-24)       |
|         | CH | 4; New Mexico (2-21-24)          |
| FGs     | SH | 4; twice                         |
|         | CH | 6; Colorado State (12-28-21)     |
| 3FGs    | SH | 3; vs. San Francisco (11-21-24)  |
|         | CH | 5; Oregon Tech (11-15-21)        |
| FTs     | SH | 4; Utah Tech (12-6-24)           |
|         | CH | 7; three times                   |
| Mins    | SH | 37; vs. Furman (12-18-24)        |
|         | CH | 41; at Nevada (2-17-24)          |

Quick Notes

- Second in program history with 598 assists
- Dished out 100+ assists in all five seasons
- One of two players in program history that has dished out 100+ assists in four consecutive years.
- Played for her mom, Kathy, in high school
- Niece of Nuggets Associate Head Coach David Adelman and granddaughter of NBA Hall of Famer Rick Adelman

#15 Alyssa CHRISTENSEN

6-3 | SR | F  
New Plymouth, Idaho (New Plymouth HS)

Season & Career Highs

|         |    |                                  |
|---------|----|----------------------------------|
| Points  | SH | 8; vs. Illinois State (11-29-24) |
|         | CH | 10; College of Idaho (11-6-23)   |
| Rebs    | SH | 4; San Jose State (1-15-25)      |
|         | CH | 8; twice                         |
| Assists | SH | 2; Weber State (11-24-24)        |
|         | CH | 5; Utah State (1-20-24)          |
| Steals  | SH |                                  |
|         | CH | 4; at Wyoming (2-1-25)           |
| Blocks  | SH | 2; San Diego (12-8-24)           |
|         | CH | 2; twice                         |
| FGs     | SH | 3; twice                         |
|         | CH | 4; College of Idaho (11-6-23)    |
| 3FGs    | SH | 2; twice                         |
|         | CH | 2; three times                   |
| FTs     | SH |                                  |
|         | CH | 2; four times                    |
| Mins    | SH | 18; at Wyoming (2-1-25)          |
|         | CH | 22; Pepperdine (11-20-23)        |

Quick Notes

- Transferred from College of Southern Idaho two years ago
- Played in 28 games for the Broncos last season
- Named Region 18 First Team (2022-23)
- Led New Plymouth to a third-place finish at the Idaho 2A State Championship

#22 Teryn GARDNER

5-9 | FR | G  
Spokane, Wash. (Mead HS)

Season & Career Highs

|         |    |                                  |
|---------|----|----------------------------------|
| Points  | SH | 10; five times                   |
|         | CH | 10; five times                   |
| Rebs    | SH | 9; Utah Tech (12-6-24)           |
|         | CH | 9; Utah Tech (12-6-24)           |
| Assists | SH | 2; three times                   |
|         | CH | 2; three times                   |
| Steals  | SH | 5; Colorado (11-10-24)           |
|         | CH | 5; Colorado (11-10-24)           |
| Blocks  | SH |                                  |
|         | CH |                                  |
| FGs     | SH | 4; twice                         |
|         | CH | 4; twice                         |
| 3FGs    | SH | 3; North Dakota State (12-19-24) |
|         | CH | 3; North Dakota State (12-19-24) |
| FTs     | SH | 4; West Virginia (11-30-24)      |
|         | CH | 4; West Virginia (11-30-24)      |

|      |    |                 |
|------|----|-----------------|
| Mins | SH | 20; three times |
|      | CH | 20; three times |

Quick Notes

- Has scored a season-high 10 points in five games on the year
- Hit three 3-pointers over the last two games
- Went to same high school as assistant coach Heather Sower (Mead HS in Spokane, Wash.)
- Named the Greater Spokane League MVP her junior and senior seasons
- Finished her high school career with 1,568 points

#23 Elodie LALOTTE

6-1 | 5TH | F  
Paris, France (Orangewood Academy)

Season & Career Highs

|         |    |                               |
|---------|----|-------------------------------|
| Points  | SH | 19; Weber State (11-24-24)    |
|         | CH | 25; Portland State (11-20-22) |
| Rebs    | SH | 8; four times                 |
|         | CH | 14; Utah State (2-12-22)      |
| Assists | SH | 4; San Diego (12-8-24)        |
|         | CH | 4; twice                      |
| Steals  | SH | 3; Wyoming (2-18-25)          |
|         | CH | 4; Wyoming (2-10-24)          |
| Blocks  | SH |                               |
|         | CH | 3; San Jose State (12-31-20)  |
| FGs     | SH | 9; Eastern Oregon (11-4-24)   |
|         | CH | 11; Portland State (12-20-22) |
| 3FGs    | SH |                               |
|         | CH |                               |
| FTs     | SH | 3; Weber State (11-24-24)     |
|         | CH | 6; at UC Davis (11-17-22)     |
| Mins    | SH | 25; at New Mexico (2-13-25)   |
|         | CH | 35; vs. Milwaukee (11-27-22)  |

Quick Notes

- 6th in program history with 778 career rebounds
- 10th in program history with 492 career field goals
- MW Honorable-Mention (2022-23)
- MW Player of the Week (Nov. 28, 2022)
- Moved to the United States from France ahead of her 2017-18 high school season.

#24 Jayda CLARK

5-4 | SR | G  
Richland, Wash. (Richland HS)

Season & Career Highs

|         |    |                              |
|---------|----|------------------------------|
| Points  | SH | 4; Eastern Oregon (11-4-24)  |
|         | CH | 11; Colorado State (1-22-22) |
| Rebs    | SH | 4; Eastern Oregon (11-4-24)  |
|         | CH | 5; New Mexico (2-19-22)      |
| Assists | SH | 4; twice                     |
|         | CH | 5; Multnomah (11-7-22)       |
| Steals  | SH |                              |
|         | CH | 3; San Diego State (3-6-22)  |
| Blocks  | SH |                              |
|         | CH |                              |
| FGs     | SH | 2; Eastern Oregon (11-4-24)  |
|         | CH | 4; Colorado State (1-22-22)  |
| 3FGs    | SH |                              |
|         | CH | 3; Colorado State (1-22-22)  |
| FTs     | SH |                              |
|         | CH | 2; three times               |
| Mins    | SH | 19; Colorado State (2-8-25)  |
|         | CH | 31; Wyoming (1-19-22)        |

Quick Notes

- Played in 20 games off the bench last season.
- Played at Richland HS for coach Hayley Middleton, the sister of former Bronco standout Braydey Hodgins
- 3x MW Scholar-Athlete (2021-22, 2022-23, 2023-24)
- 2x Academic All-MW (Spring 2022, 2023, 2024)

#30 Mackenzie NARO

5-8 | SR | G  
Beaverton, Ore. (Beaverton HS)

Season & Career Highs

|         |    |                               |
|---------|----|-------------------------------|
| Points  | SH |                               |
|         | CH | 3; four times                 |
| Rebs    | SH |                               |
|         | CH | 3; Evergreen State (12-12-23) |
| Assists | SH |                               |
|         | CH |                               |
| Steals  | SH |                               |
|         | CH |                               |

|        |    |                         |
|--------|----|-------------------------|
| Blocks | SH |                         |
|        | CH |                         |
| FGs    | SH |                         |
|        | CH |                         |
| 3FGs   | SH |                         |
|        | CH |                         |
| FTs    | SH |                         |
|        | CH |                         |
| Mins   | SH | 3; twice                |
|        | CH | 10; Air Force (2-15-22) |

Quick Notes

- Younger sister of Mary Kay Naro
- Played for her mom, Kathy, in high school
- Niece of Nuggets Associate Head Coach David Adelman and granddaughter of NBA Hall of Famer Rick Adelman

#32 Natalie PASCO

5-10 | JR | G  
Danville, Calif. (San Ramon Valley HS)

Season & Career Highs

|         |    |                                  |
|---------|----|----------------------------------|
| Points  | SH | 26; San Jose State (1-15-25)     |
|         | CH | 29; Utah State (2-18-23)         |
| Rebs    | SH | 6; at Colorado State (1-21-25)   |
|         | CH | 9; New Mexico (2-21-24)          |
| Assists | SH | 2; Weber State (11-24-24)        |
|         | CH | 5; vs. Utah State (3-5-23)       |
| Steals  | SH | 3; Butler (12-1-24)              |
|         | CH | 4; Utah State (1-20-24)          |
| Blocks  | SH | 2; Air Force (1-1-25)            |
|         | CH | 2; twice                         |
| FGs     | SH | 10; San Jose State (1-15-25)     |
|         | CH | 10; twice                        |
| 3FGs    | SH | 5; at Utah State (1-8-25)        |
|         | CH | 7; Eastern Washington (11-11-22) |
| FTs     | SH | 5; San Jose State (1-15-25)      |
|         | CH | 6; San Jose State (2-7-24)       |
| Mins    | SH | 35; Illinois State (11-29-24)    |
|         | CH | 38; Nevada (1-3-24)              |

Quick Notes

- 3rd all-time in program history with 194 career 3-pointers
- Has scored 20+ points 14 times in her career
- Has made 4+ 3-pointers 21 times in her career, including nine times this season
- Made 84 3-pointers last season, the third-most in a single season in program history
- MW All-Conference Team (2023-24) & Preseason All-Conference (2024-25)

#33 Abby MUSE

6-3 | 5TH | F  
Brentwood, Calif. (Heritage HS)

Season & Career Highs

|         |    |                                   |
|---------|----|-----------------------------------|
| Points  | SH | 19; North Dakota State (12-19-24) |
|         | CH | 22; Colorado State (12-28-21)     |
| Rebs    | SH | 12; twice                         |
|         | CH | 18; San Jose State (12-31-20)     |
| Assists | SH | 5; Weber State (11-24-24)         |
|         | CH | 10; vs. Utah State (3-10-24)      |
| Steals  | SH | 3; twice                          |
|         | CH | 4; Warner Pacific (12-20-21)      |
| Blocks  | SH | 7; twice                          |
|         | CH | 8; New Mexico (1-21-23)           |
| FGs     | SH | 9; North Dakota State (12-19-24)  |
|         | CH | 10; Colorado State (12-28-21)     |
| 3FGs    | SH |                                   |
|         | CH |                                   |
| FTs     | SH | 5; Nevada (1-18-25)               |
|         | CH | 10; Utah State (1-9-22)           |
| Mins    | SH | 33; North Dakota State (12-19-24) |
|         | CH | 39; Fresno State (2-4-23)         |

Quick Notes

- Set the program's all-time rebound record against UNLV on Jan. 4
- Program's all-time leading shot blocker
- One of three MW players that has blocked over 300 career shots
- Pulled down a program-record 293 rebounds last year
- Recorded the program's third triple-double in the opening round of the MW Tournament last season

CURRENT RECORD HOLDERS

CAREER BLOCKS

| Rk | Blks | Player          | Years      |
|----|------|-----------------|------------|
| 1. | 327  | Abby Muse       | 2020-pres. |
| 2. | 142  | Stephanie Block | 1996-00    |
| 3. | 115  | Verna Guild     | 1992-96    |
| 4. | 114  | Lauren Lenhardt | 2009-13    |
| 5. | 102  | Mary Kay Naro   | 2020-pres. |

CAREER REBOUNDS

| Rk | Rebs  | Player        | Years      |
|----|-------|---------------|------------|
| 1. | 1,107 | Abby Muse     | 2020-pres. |
| 2. | 1,025 | Karla Meier   | 1977-82    |
| 3. | 888   | Shalen Shaw   | 2014-18    |
| 4. | 887   | JoAnn Burrell | 1974-78    |
| 5. | 804   | Marla Curtis  | 1981-85    |

CAREER ASSISTS

| Rk | Asts | Player            | Years      |
|----|------|-------------------|------------|
| 1. | 616  | Yaiza Rodriguez   | 2013-17    |
| 2. | 598  | Mary Kay Naro     | 2020-pres. |
| 3. | 457  | Jayde Christopher | 2018-20    |
| 4. | 451  | Tricia Bader      | 1991-96    |
| 5. | 390  | Marta Hermida     | 2015-19    |

CAREER 3-POINTERS

| Rk | 3pts | Player         | Years      |
|----|------|----------------|------------|
| 1. | 350  | Riley Lupfer   | 2016-20    |
| 2. | 260  | Abby Vaughan   | 1999-03    |
| 3. | 194  | Natalie Pasco  | 2022-pres. |
| 4. | 193  | Brooke Pahukoa | 2013-17    |
| 5. | 169  | Two with       |            |

CAREER BLOCKS

| Rk | Blks | Player          | Years      |
|----|------|-----------------|------------|
| 1. | 327  | Abby Muse       | 2020-pres. |
| 2. | 142  | Stephanie Block | 1996-00    |
| 3. | 115  | Verna Guild     | 1992-96    |
| 4. | 114  | Lauren Lenhardt | 2009-13    |
| 5. | 102  | Mary Kay Naro   | 2020-pres. |

CAREER REBOUNDS

| Rk | Rebs  | Player         | Years      |
|----|-------|----------------|------------|
| 2. | 1,025 | Karla Meier    | 1977-82    |
| 3. | 888   | Shalen Shaw    | 2014-18    |
| 4. | 887   | JoAnn Burrell  | 1974-78    |
| 5. | 804   | Marla Curtis   | 1981-85    |
| 6. | 786   | Elodie Lalotte | 2020-pres. |

CAREER FIELD GOALS

| Rk | FGs | Player          | Years      |
|----|-----|-----------------|------------|
| 5. | 558 | Tasha Harris    | 2004-10    |
| 6. | 540 | Connie Sandland | 1980-84    |
| 7. | 529 | Riley Lupfer    | 2016-20    |
| 8. | 522 | Lauren Lenhardt | 2009-13    |
| 9. | 494 | Elodie Lalotte  | 2020-pres. |

CAREER 3-POINTERS

| Rk  | 3pts | Player           | Years      |
|-----|------|------------------|------------|
| 8.  | 163  | Kellie Lewis     | 1994-98    |
| 9.  | 153  | Jessica Thompson | 2005-10    |
| 10. | 152  | Tasha Harris     | 2004-10    |
| 11. | 145  | Braydey Hodgins  | 2016-20    |
| 11. | 145  | Dani Bayes       | 2022-pres. |

CAREER FREE THROWS

| Rk  | FTs | Player          | Years      |
|-----|-----|-----------------|------------|
| 8.  | 280 | Lauren Lenhardt | 2009-13    |
| 9.  | 277 | Connie Sandland | 1980-84    |
| 10. | 273 | Kim Brydges     | 1994-98    |
| 11. | 257 | Lauren Lenhardt | 2009-13    |
| 12. | 253 | Abby Muse       | 2020-pres. |

CAREER FIELD GOALS

| Rk  | FGs | Player           | Years      |
|-----|-----|------------------|------------|
| 10. | 493 | Miquelle Askew   | 2012-16    |
| 11. | 473 | Michelle Schultz | 1991-96    |
| 12. | 472 | Shalen Shaw      | 2014-18    |
| 13. | 467 | Marta Hermida    | 2015-19    |
| 14. | 456 | Abby Muse        | 2020-pres. |

CAREER POINTS

| Rk  | Pts   | Player         | Years      |
|-----|-------|----------------|------------|
| 11. | 1,261 | Miquelle Askew | 2012-16    |
| 12. | 1,258 | Marta Hermida  | 2015-19    |
| 13. | 1,191 | Shalen Shaw    | 2014-18    |
| 14. | 1,171 | Tricia Bader   | 1991-96    |
| 15. | 1,165 | Abby Muse      | 2020-pres. |

CAREER 3-POINTERS

| Rk  | 3pts | Player      | Years      |
|-----|------|-------------|------------|
| 13. | 142  | Jackie Lee  | 2004-08    |
| 14. | 138  | Kati Isham  | 2010-12    |
| 15. | 132  | Angie Evans | 1990-94    |
| 16. | 119  | April Cline | 1989-93    |
| 17. | 110  | Mya Hansen  | 2022-pres. |

CAREER POINTS

| Rk  | Pts   | Player          | Years      |
|-----|-------|-----------------|------------|
| 14. | 1,171 | Tricia Bader    | 1991-96    |
| 15. | 1,165 | Abby Muse       | 2020-pres. |
| 16. | 1,163 | Crista Peterson | 1998-02    |
| 17. | 1,150 | Braydey Hodgins | 2016-20    |
| 18. | 1,133 | Natalie Pasco   | 2022-pres. |

CAREER FIELD GOALS

| Rk  | FGs | Player        | Years      |
|-----|-----|---------------|------------|
| 15. | 455 | Elaine Elliot | 1973-77    |
| 16. | 436 | Tricia Bader  | 1991-96    |
| 17. | 423 | Elaine Elliot | 1973-77    |
| 18. | 411 | Tricia Bader  | 1991-96    |
| 18. | 411 | Natalie Pasco | 2022-pres. |

CAREER POINTS

| Rk  | Pts   | Player          | Years      |
|-----|-------|-----------------|------------|
| 15. | 1,165 | Abby Muse       | 2020-pres. |
| 16. | 1,163 | Crista Peterson | 1998-02    |
| 17. | 1,150 | Braydey Hodgins | 2016-20    |
| 18. | 1,133 | Natalie Pasco   | 2022-pres. |
| 19. | 1,122 | Elodie Lalotte  | 2020-pres. |

CAREER STEALS

| Rk  | Stls | Player         | Years      |
|-----|------|----------------|------------|
| 15. | 150  | Wendy Sullivan | 1986-90    |
| 16. | 147  | Marla Curtis   | 1981-85    |
| 17. | 144  | Two with       | 2013-17    |
| 19. | 140  | Brooke Pahukoa | 2013-17    |
| 20. | 138  | Abby Muse      | 2020-pres. |

CAREER BLOCKS

| Rk  | Blks | Player          | Years      |
|-----|------|-----------------|------------|
| 18. | 69   | Joyce Harrell   | 2015-19    |
| 19. | 68   | Michelle Smith  | 1994-96    |
| 20. | 66   | Crista Peterson | 1998-02    |
| 21. | 62   | Connie Sandland | 1980-84    |
| 22. | 61   | Elodie Lalotte  | 2020-pres. |

CAREER STEALS

| Rk  | Stls | Player         | Years      |
|-----|------|----------------|------------|
| 19. | 140  | Brooke Pahukoa | 2013-17    |
| 20. | 138  | Abby Muse      | 2020-pres. |
| 21. | 134  | Niki Gamez     | 1986-90    |
| 22. | 131  | Two with       |            |
| 22. | 131  | Mary Kay Naro  | 2020-pres. |

CAREER REBOUNDS

| Rk  | Rebs | Player          | Years      |
|-----|------|-----------------|------------|
| 19. | 579  | Miquelle Askew  | 2012-16    |
| 20. | 552  | Andrea Swindall | 1998-02    |
| 21. | 548  | Kinzi Poteet    | 2009-15    |
| 22. | 541  | Becky Sievers   | 1987-91    |
| 23. | 539  | Mary Kay Naro   | 2020-pres. |

CAREER 3-POINTERS

| Rk  | 3pts | Player         | Years      |
|-----|------|----------------|------------|
| 19. | 107  | Anna Ostlie    | 2020-23    |
| 20. | 96   | Mandy Welch    | 2000-04    |
| 21. | 93   | Yvette Barrios | 1997-00    |
| 22. | 88   | Jodi Nakashima | 2001-05    |
| 23. | 87   | Mary Kay Naro  | 2020-pres. |

CAREER ASSISTS

| Rk  | Asts | Player       | Years      |
|-----|------|--------------|------------|
| 20. | 245  | Marj Conners | 1985-88    |
| 21. | 243  | Abby Vaughan | 1999-03    |
| 22. | 241  | Three with   |            |
| 23. | 228  | Two with     |            |
| 23. | 228  | Mya Hansen   | 2022-pres. |

SEASON BLOCKS

| Rk | Blks | Player          | Years   |
|----|------|-----------------|---------|
| 1. | 93   | Abby Muse       | 2022-23 |
| 2. | 91   | Abby Muse       | 2023-24 |
| 3. | 77   | Camille Redmon  | 2014-15 |
| 4. | 69   | Stephanie Block | 1999-00 |
| 5. | 65   | Abby Muse       | 2024-25 |

SEASON FREE THROWS

| Rk | FTs | Player           | Years   |
|----|-----|------------------|---------|
| 3. | 136 | Tasha Harris     | 2009-10 |
| 4. | 123 | Tawnia Gray      | 2000-01 |
| 5. | 121 | Michelle Schultz | 1995-96 |
| 6. | 113 | Stephanie Block  | 1999-00 |
| 7. | 104 | Tatum Thompson   | 2024-25 |

SEASON ASSISTS

| Rk  | Asts | Player        | Years   |
|-----|------|---------------|---------|
| 7.  | 142  | Mary Kay Naro | 2023-24 |
| 8.  | 139  | Tricia Bader  | 1993-94 |
| 9.  | 127  | Tricia Bader  | 1992-93 |
| 10. | 125  | Marj Conners  | 1985-86 |
| 10. | 125  | Mary Kay Naro | 2024-25 |

SEASON 3-POINTERS

| Rk  | 3pts | Player        | Years   |
|-----|------|---------------|---------|
| 12. | 69   | Abby Vaughan  | 2000-01 |
| 13. | 68   | Kati Isham    | 2011-12 |
| 14. | 67   | Riley Lupfer  | 2018-19 |
| 15. | 66   | April Cline   | 1991-92 |
| 16. | 64   | Natalie Pasco | 2024-25 |

SEASON FREE THROWS (CONF.)

| Rk | FTs | Player           | Years   |
|----|-----|------------------|---------|
| 1. | 89  | Michelle Schultz | 1994-95 |
| 2. | 79  | Tawnia Gray      | 2000-01 |
| 3. | 75  | Tasha Harris     | 2007-08 |
| 4. | 71  | Tasha Harris     | 2009-10 |
| 5. | 66  | Tatum Thompson   | 2024-25 |

SEASON BLOCKS (CONF.)

| Rk | Blks | Player         | Years   |
|----|------|----------------|---------|
| 1. | 58   | Abby Muse      | 2020-21 |
| 2. | 42   | Camille Redmon | 2014-15 |
| 3. | 36   | Two with       |         |
| 5. | 34   | Abby Muse      | 2020-21 |
| 6. | 32   | Abby Muse      | 2024-25 |



## CURRENT RECORD HOLDERS

## SEASON REBOUNDS (CONF.)

| Rk | Rebs | Player          | Years   |
|----|------|-----------------|---------|
| 3. | 154  | Abby Muse       | 2022-23 |
| 4. | 151  | Abby Muse       | 2022-23 |
| 5. | 145  | Mallory McGwire | 2020-21 |
| 6. | 142  | Abby Muse       | 2021-22 |
| 7. | 139  | Tatum Thompson  | 2024-25 |

## SEASON POINTS (CONF.)

| Rk | Pts | Player           | Years   |
|----|-----|------------------|---------|
| 4. | 286 | Lidiya Varbanova | 1990-91 |
| 5. | 277 | Lidiya Varbanova | 1991-92 |
| 6. | 273 | Michelle Schultz | 1995-96 |
| 7. | 270 | Lauren Lenhardt  | 2012-13 |
| 8. | 259 | Tatum Thompson   | 2024-25 |

## SEASON ASSISTS (CONF.)

| Rk | Asts | Player          | Years   |
|----|------|-----------------|---------|
| 4. | 93   | Mary Kay Naro   | 2020-21 |
| 5. | 91   | Yaiza Rodriguez | 2016-17 |
| 6. | 83   | Marta Hermida   | 2017-18 |
| 7. | 78   | Jocelyn Pfeifer | 1988-89 |
| 8. | 77   | Mary Kay Naro   | 2024-25 |

## SEASON POINTS (CONF.)

| Rk  | Pts | Player          | Years   |
|-----|-----|-----------------|---------|
| 8.  | 270 | Lauren Lenhardt | 2012-13 |
| 9.  | 251 | Tasha Harris    | 2007-08 |
| 10. | 249 | Brooke Pahukoa  | 2015-16 |
| 11. | 244 | Stephanie Block | 1999-00 |
| 12. | 243 | Natalie Pasco   | 2024-25 |

## SEASON 3-POINTERS (CONF.)

| Rk  | 3Pts | Player          | Years   |
|-----|------|-----------------|---------|
| 7.  | 41   | Two with        |         |
| 9.  | 40   | Cassidy Blaine  | 2004-05 |
| 10. | 39   | Braydey Hodgins | 2018-19 |
| 11. | 38   | April Cline     | 1991-92 |
| 12. | 34   | Natalie Pasco   | 2024-25 |

## SEASON FIELD GOALS (CONF.)

| Rk  | FGs | Player           | Years   |
|-----|-----|------------------|---------|
| 5.  | 103 | Two with         |         |
| 7.  | 102 | A'Shanti Coleman | 2019-20 |
| 8.  | 97  | Three with       |         |
| 11. | 96  | Stephanie Block  | 1999-00 |
| 12. | 94  | Tatum Thompson   | 2024-25 |

## SEASON 3-POINTERS (CONF.)

| Rk  | 3Pts | Player          | Years   |
|-----|------|-----------------|---------|
| 10. | 39   | Braydey Hodgins | 2018-19 |
| 11. | 38   | April Cline     | 1991-92 |
| 12. | 33   | Marta Hermida   | 2015-16 |
| 13. | 31   | Kati Isham      | 2010-11 |
| 13. | 31   | Dani Bayes      | 2024-25 |

## SEASON FIELD GOALS (CONF.)

| Rk  | FGs | Player          | Years   |
|-----|-----|-----------------|---------|
| 11. | 96  | Stephanie Block | 1999-00 |
| 12. | 94  | Tatum Thompson  | 2024-25 |
| 13. | 93  | Two with        |         |
| 15. | 91  | Mallory McGwire | 1999-00 |
| 16. | 90  | Natalie Pasco   | 2024-25 |

## SEASON BLOCKS (CONF.)

| Rk  | Blks | Player         | Years   |
|-----|------|----------------|---------|
| 18. | 20   | Two with       |         |
| 20. | 18   | Two with       |         |
| 22. | 17   | Two with       |         |
| 24. | 16   | Verna Guild    | 1993-94 |
| 24. | 16   | Tatum Thompson | 2024-25 |

## TEAM SEASON BLOCKS

| Rk | Blks | Years   |
|----|------|---------|
| 1. | 216  | 2023-24 |
| 2. | 194  | 2014-15 |
| 3. | 165  | 2024-25 |
| 4. | 149  | 1999-00 |
| 5. | 146  | 2014-15 |

## TEAM SEASON 3-POINTERS

| Rk | 3Pts | Years   |
|----|------|---------|
| 4. | 239  | 2019-20 |
| 5. | 237  | 2016-17 |
| 6. | 231  | 2023-24 |
| 7. | 225  | 2013-14 |
| 8. | 222  | 2024-25 |

## TEAM SEASON BLOCKS (CONF.)

| Rk | Blks | Years   |
|----|------|---------|
| 1. | 116  | 2022-23 |
| 2. | 115  | 2020-21 |
| 3. | 95   | 2023-24 |
| 4. | 87   | 2024-25 |
| 5. | 80   | 1994-95 |

## TEAM SEASON 3-POINTERS (CONF.)

| Rk | 3Pts | Years    |
|----|------|----------|
| 1. | 154  | 2014-15  |
| 2. | 146  | Two with |
| 4. | 129  | 2015-16  |
| 4. | 117  | 2024-25  |
| 5. | 112  | 2023-24  |

## TEAM SEASON POINTS (CONF.)

| Rk | Pts   | Years   |
|----|-------|---------|
| 1. | 1,291 | 2020-21 |
| 2. | 1,276 | 2015-16 |
| 3. | 1,267 | 2020-21 |
| 4. | 1,239 | 2017-18 |
| 5. | 1,223 | 2024-25 |

## TEAM FIELD GOALS (CONF.)

| Rk | FGs | Years   |
|----|-----|---------|
| 2. | 489 | 2020-21 |
| 3. | 470 | 2013-15 |
| 4. | 462 | 2016-17 |
| 5. | 453 | 2017-18 |
| 6. | 446 | 2024-25 |

## TEAM ASSISTS (CONF.)

| Rk  | FGs | Years   |
|-----|-----|---------|
| 6.  | 267 | 2014-15 |
| 7.  | 264 | 2016-17 |
| 8.  | 263 | 1987-88 |
| 9.  | 260 | 2020-21 |
| 10. | 259 | 2024-25 |

## MW CAREER BLOCKS (TOTAL)

| Rk | Blks | Player                          | Years      |
|----|------|---------------------------------|------------|
| 1. | 346  | Bego Faz Davalos (Fresno State) | 2014-17    |
| 2. | 344  | Jordan Adams (New Mexico)       | 1999-03    |
| 3. | 327  | Abby Muse (Boise State)         | 2020-pres. |
| 4. | 267  | Paris Johnson (San Diego State) | 2007-11    |
| 5. | 212  | Hillary Carlson (Wyoming)       | 2007-11    |

## MW CAREER REBOUNDS (TOTAL)

| Rk | Blks  | Player                   | Years      |
|----|-------|--------------------------|------------|
| 1. | 1,145 | Allyson Fertig (Wyoming) | 2021-pres. |
| 2. | 1,133 | Jamie Smith (UNLV)       | 2008-12    |
| 3. | 1,107 | Abby Muse (Boise State)  | 2020-pres. |
| 4. | 1,081 | Desi-Rae Young (UNLV)    | 2020-24    |
| 5. | 1,015 | Kim Smith (Utah)         | 2002-06    |

## MW CAREER BLOCKS (MW PLAY)

| Rk | Blks | Player                          | Years      |
|----|------|---------------------------------|------------|
| 1. | 199  | Bego Faz Davalos (Fresno State) | 2014-17    |
| 2. | 181  | Abby Muse (Boise State)         | 2020-pres. |
| 3. | 143  | Paris Johnson (San Diego State) | 2007-11    |
| 4. | 140  | Jordan Adams (New Mexico)       | 1999-03    |
| 5. | 111  | Hillary Carlson (Wyoming)       | 2007-11    |

## MW CAREER REBOUNDS (MW PLAY)

| Rk | Rebs | Player                    | Years      |
|----|------|---------------------------|------------|
| 1. | 646  | Jamie Smith (UNLV)        | 2008-12    |
| 2. | 626  | Abby Muse (Boise State)   | 2020-pres. |
| 3. | 611  | Allyson Fertig (Wyoming)  | 2021-pres. |
| 4. | 566  | Jamie Smith (UNLV)        | 2008-12    |
| 5. | 525  | Shalen Shaw (Boise State) | 2014-18    |

## TOTAL WINS AS MW COACH

| Rk | Wins | Player                         | Years      |
|----|------|--------------------------------|------------|
| 1. | 314  | Joe Legerski (Wyoming)         | 2003-19    |
| 2. | 262  | Gordy Presnell (Boise State)   | 2011-pres. |
| 2. | 259  | Elaine Elliot (Utah)           | 1999-10    |
| 4. | 258  | Don Flanagan (New Mexico)      | 1999-11    |
| 5. | 253  | Ryun Williams (Colorado State) | 2012-pres. |

## TOTAL WINS (LEAGUE PLAY)

| Rk | Wins | Player                         | Years      |
|----|------|--------------------------------|------------|
| 1. | 159  | Joe Legerski (Wyoming)         | 2003-19    |
| 2. | 143  | Ryun Williams (Colorado State) | 2012-pres. |
| 3. | 141  | Gordy Presnell (Boise State)   | 2011-pres. |
| 4. | 130  | Elaine Elliot (Utah)           | 1999-10    |
| 5. | 114  | Don Flanagan (New Mexico)      | 1999-11    |

## MW TOURNAMENT WINS

| Rk | Wins | Player                         | Years      |
|----|------|--------------------------------|------------|
| 1. | 21   | Don Flanagan (New Mexico)      | 1999-11    |
| 2. | 20   | Gordy Presnell (Boise State)   | 2011-pres. |
| 3. | 18   | Elaine Elliot (Utah)           | 1999-10    |
| 4. | 12   | Jaime White (Fresno State)     | 2014-pres. |
| 4. | 12   | Ryun Williams (Colorado State) | 2012-pres. |

YEAR BY YEAR

|                    |                 |       |              |
|--------------------|-----------------|-------|--------------|
| 1987-88            | Seattle Pacific | 16-11 | 13-10 (5)    |
| 1988-89            | Seattle Pacific | 24-6  | 17-5 (4)     |
| 1989-90            | Seattle Pacific | 21-9  | 17-7 (4)     |
| 1990-91            | Seattle Pacific | 18-11 | 7-9 (6)      |
| 1991-92            | Seattle Pacific | 17-13 | 5-5 (4)      |
| 1992-93            | Seattle Pacific | 17-10 | 7-3 (2)      |
| 1993-94            | Seattle Pacific | 17-10 | 6-4 (3)      |
| 1994-95            | Seattle Pacific | 21-8  | 7-3 (2)      |
| 1995-96            | Seattle Pacific | 17-10 | 3-7 (4)      |
| 1996-97            | Seattle Pacific | 26-3  | 7-1 (1)      |
| 1997-98            | Seattle Pacific | 27-3  | 7-1 (1)      |
| 1998-99            | Seattle Pacific | 19-10 | 11-7 (4D)    |
| 1999-00            | Seattle Pacific | 21-7  | 13-5 (3)     |
| 2000-01            | Seattle Pacific | 24-5  | 18-4 (1)     |
| 2001-02            | Seattle Pacific | 22-6  | 14-4 (2)     |
| 2002-03            | Seattle Pacific | 29-1  | 18-0 (1)     |
| 2003-04            | Seattle Pacific | 30-1  | 18-0 (1)     |
| 2004-05            | Seattle Pacific | 30-3  | 17-1 (1)     |
| 2005-06            | Boise State     | 15-15 | 6-10 (6)     |
| 2006-07            | Boise State     | 24-9  | 12-4 (t-1)   |
| 2007-08            | Boise State     | 24-8  | 14-2 (1)     |
| 2008-09            | Boise State     | 16-15 | 9-7 (t-5)    |
| 2009-10            | Boise State     | 19-12 | 8-8 (t-4)    |
| 2010-11            | Boise State     | 12-19 | 3-13 (8)     |
| 2011-12            | Boise State     | 15-16 | 5-9 (6)      |
| 2012-13            | Boise State     | 11-19 | 4-12 (7)     |
| 2013-14            | Boise State     | 18-14 | 12-6 (T-3rd) |
| 2014-15            | Boise State     | 22-11 | 11-7 (4th)   |
| 2015-16            | Boise State     | 19-11 | 12-6 (3rd)   |
| 2016-17            | Boise State     | 25-8  | 12-6 (3rd)   |
| 2017-18            | Boise State     | 23-10 | 14-4 (T-1st) |
| 2018-19            | Boise State     | 28-5  | 16-2 (1st)   |
| 2019-20            | Boise State     | 24-9  | 13-5 (2nd)   |
| 2020-21            | Boise State     | 13-8  | 10-8         |
| 2021-22            | Boise State     | 8-21  | 4-13         |
| 2022-23            | Boise State     | 17-16 | 11-7         |
| 2023-24            | Boise State     | 21-14 | 10-8         |
| Totals             | Record          | Pct.  |              |
| at Seattle Pacific | 396-127         | .757  |              |
| at Boise State     | 372-255         | .593  |              |
| Overall            | 768-382         | .668  |              |
| Postseason         | 29-20           | .592  |              |

HIGHLIGHTS

|  |        |        |
|--|--------|--------|
| NCAA Div. II Winningest Coaches All-Time |        |        |
| By Percentage                            | T-10th | .75.7% |
| By Victories                             | 21st   | 396    |
| (as of his departure in summer of 2005)  |        |        |

|                                   |    |
|-----------------------------------|----|
| COACH OF THE YEAR HONORS          |    |
| TOTAL                             | 17 |
| WBCA National Division II         | 2  |
| WBCA West Region Division I       | 1  |
| WBCA West Region Division II      | 4  |
| Western Athletic Conference (WAC) | 1  |
| Mountain West (MW)                | 1  |
| Other Conference COY              | 8  |

|                                 |    |
|---------------------------------|----|
| CONFERENCE CHAMPIONSHIPS        |    |
| TOTAL                           | 16 |
| Mountain West                   | 7  |
| Western Athletic (WAC)          | 2  |
| Pacific West                    | 2  |
| Great Northwest Athletic (GNAC) | 5  |

|                                 |    |
|---------------------------------|----|
| NATIONAL POSTSEASON APPEARANCES |    |
| TOTAL                           | 21 |
| NCAA Division I Tournament      | 6  |
| First Round                     | 5  |
| WNIT                            | 2  |
| Second Round                    | 1  |
| WBI                             | 1  |
| Second Round                    | 1  |
| NCAA Division II Tournament     | 10 |
| Reached 2nd Round               | 7  |
| Reached Sweet 16                | 6  |
| Reached Elite Eight             | 3  |
| Reached Final (runner-up)       | 1  |
| NAIA Tournament                 | 3  |
| Reached Region 2nd Round        | 2  |

Gordy PRESNELL  
Boise State Head Coach

20th Season at Boise State; 38th Overall  
Alma Mater: Northwest Nazarene, 1983;  
Seattle Pacific, 1989  
Hometown: Lapwai, Idaho



**BOISE STATE TENURE (2005-present)**  
Twenty years ago Gordy Presnell returned to his home state to become the sixth head coach in Boise State University's women's basketball program history. He brought with him a mild and laid-back demeanor, 18 years of head-coaching experience and a long record of success. Presnell currently ranks first in Bronco history for victories by a coach with a record of 355-241 (.596) overall. The 2024-25 season will mark his 38th as a collegiate head coach with a career record of 751-368 (.671).

With 751 career victories through the 2023-24 campaign, Presnell currently sits at 30th on the all-time victories list of NCAA (all levels) wins and 12th among active coaches. He coached the 1,000th game of his illustrious career in the 2020-21 season opener and recorded his 750th career win on March 10 in the opening round of the MW Tournament with an 84-49 win over Utah State.

Presnell's Bronco teams have qualified for the NCAA Tournament on six occasions (2007, 2015, 2017-20) and 10 times have qualified for the postseason. Under his watch, Boise State has also won four regular-season titles (2007-08 WAC; 2018-19 Mountain West) and six conference tournament titles (2007 WAC; 2015, 2017-20 Mountain West).

Boise State's 80-76 overtime win over Fresno State in the 2020 Mountain West Basketball Championship Game made the Broncos the first program in conference history to win four-straight tournaments (2017-20), and, with five tournament titles (2015, 2017-20), tied the Broncos with New Mexico for the most all-time.

Presnell, the 2018-19 Mountain West Coach of the Year, has taken the Broncos to 198 victories over the past ten seasons, including 132 (regular season and conference tournament) against Mountain West competition. Boise State has won 10 or more conference games in nine of the past 10 seasons, the most of any team in the MW in that span. After setting the program record for wins in a season with 25 in 2016-17, Presnell guided the Broncos to 23 wins in 2017-18 before establishing the new benchmark with 28 victories in 2018-19. The Broncos followed that with the program's fourth-straight 20-win season in 2019-20, going 24-9.

The first of the recent 20-win seasons came in 2014-15, when Presnell led the Broncos to a 22-11 mark, the Mountain West Tournament title, and the program's first NCAA Tournament appearance since 2007. In the first round, the Broncos, a 15-seed, fought valiantly at No. 2 Tennessee, trailing the Lady Volunteers by just five with under three minutes to play before falling 72-61.

Over this span, Presnell's players have earned 22 All-Mountain West selections, including 11 first-team honors. They have stepped up even more when the lights shine brightest, as Brooke Pahukoa (2015, 2017), Riley Lupfer (2018), Braydey Hodgins (2019), and A'Shanti Coleman (2020) have combined to capture five Mountain West Tournament MVPs.

Since Boise State joined the Mountain West in 2011-12, the Broncos, under Presnell, lead all conference schools with five NCAA Tournament bids. Presnell's teams have gone 124-85 (.593) in MW games and an impressive 197-79 (.722) at home in Boise, including a perfect 15-0 mark in 2007-08.

The Broncos have recorded 14 winning seasons over Presnell's 19-year tenure. After going 15-15 in his first season (2005-06), the Broncos recorded four-consecutive winning seasons, including a then-school-record 24 wins in both the 2006-07 (24-9) and 2007-08 (24-8) campaigns.

In 2006-07, Presnell led the Broncos to the program's first

postseason appearance under his watch, and first since 1998. Boise State went 24-9 overall, winning the WAC regular-season and tournament titles to advance to the NCAA Tournament for just the second time in program history, and to the postseason for the first time since making the 1998 WNIT. For his coaching performance he was named the WAC and WBCA Division I Regional Coach of the Year.

Prior to taking over at Boise State, Presnell coached for 18 successful years at Seattle Pacific University in Washington. At SPU, he inherited a program that had not recorded a winning season in the previous nine years. He built the Falcons into a NCAA Division II national power, accumulating an overall record of 396 victories with 127 defeats (.757). Along the way his teams amassed an average of 22 wins per season while claiming seven conference championships, including four in his last five seasons. In addition, his teams were an impressive 221-29 (.884) at home in Broughman Pavilion, including five unbeaten home seasons.

On the national scene under Presnell, the Falcons advanced to nine-straight (1997-2005) and 10 of 11 NCAA Division II tournaments while he was in Seattle. Overall, Seattle Pacific made postseason appearances in 13 of his 18 years, 10 NCAA and three NAIA. Presnell's teams reached three NCAA Division II Elite Eights and advanced to the 2005 title game.

At the time of his departure from Seattle Pacific in the summer of 2005, Presnell was ranked tied for 10th-place nationally among NCAA Division II coaches for win percentage (.757) and 21st for total victories.

In 36 years as a collegiate head coach Presnell has experienced 31 winning seasons and one at .500. His teams have won a combined 11 regular-season titles, seven at SPU and four at Boise State. In addition, he has guided 21 of his 36 squads to postseason national-tournament bids.

During his career he has been named conference coach of the year eight times, WBCA Regional Coach of the Year five times (four at NCAA Division II level and one at Division I), and the WBCA NCAA Division II National Coach of the Year twice. His coach of the year honors now total 16 in 36 years. In 2007, during the NCAA's 25th anniversary celebration for women's sports, coach Presnell was listed as one of the top coaches all-time in their publication "Women's Basketball Finest."

His student-athletes have accumulated numerous honors along the way: one All-American; seven individuals have earned 10 honorable mention All-American awards; five league players of the year; 11 freshman/newcomers of the year; one freshman of the year; 35 players have combined for 55 all-conference honors; 12 conference all-freshmen team members; five conference all-defensive team members; 41 individuals have combined for 105 academic all-conference honors; 14 combined for 16 national academic honors including two academic All-Americans.

Presnell, a Lapwai, Idaho, native graduated from Northwest Nazarene in Nampa, Idaho, in 1983 with a B.A. in physical education. He was awarded an honorary doctorate degree from NNU in 2024. He continued his studies in physical education at Seattle Pacific, where he earned a master's degree in 1989. He and his wife, former SPU gymnast Susan Nolte, live in Meridian, Idaho. They have two children, a daughter, Jacquelyn, and a son, Ryder.

In 2008 he was honored by his alma mater as the "Outstanding Educator of the Year." While at Seattle Pacific he was asked to throw out the opening pitch at two Seattle Mariners games.

## LAST TIME BOISE STATE...

## Team

|                                     |  |
|-------------------------------------|--|
| Scored 100+ points.....             | 121, Multnomah, Nov. 7, 2022 (121-64 win)          |
| Scored 100+ points on the road..... | 112, at San Jose State, Jan. 24, 2018 (112-80 win) |
| Scored 90+ points.....              | 94, San Jose State, Jan. 15, 2025, (93-64 win)     |
| Scored fewer than 50 points.....    | 45, at Wyoming, Feb. 1, 2025, (79-45 loss)         |
| Scored fewer than 40 points.....    | 38, Long Beach State, Nov. 13, 2021 (61-38 loss)   |
| Allowed 100+ points.....            | 100, at New Mexico, Jan. 3, 2018 (100-83 loss)     |
| Allowed 90+ points.....             | 92, at Montana, March 20, 2024 (92-66 loss)        |
| Allowed fewer than 50 points.....   | 50, Weber State, Nov. 24, 2024 (96-46 win)         |
| Allowed fewer than 40 points.....   | 35, College of Idaho, Nov. 6, 2023 (77-35 win)     |

|                         |  |
|-------------------------|--|
| Won by 20+ points.....  | 29, San Jose State, Jan. 15, 2025, (93-64 win) |
| Won by 30+ points.....  | 34, Utah Tech, Dec. 6, 2024 (90-56 win)        |
| Won by 40+ points.....  | +52, Weber State, Nov. 24, 2024 (96-46 win)    |
| Won by 50+ points.....  | +52, Weber State, Nov. 24, 2024 (96-46 win)    |
| Lost by 20+ points..... | -34, at Wyoming, Feb. 1, 2025, (79-45 loss)    |
| Lost by 30+ points..... | -30, at UNLV, Feb. 26, 2025 (83-53 loss)       |

|                              |  |
|------------------------------|--|
| Played in overtime.....      | at New Mexico, Feb. 13, 2025 (88-83 OT loss)   |
| Won in overtime.....         | vs. Fresno State, March 4, 2020 (80-76 OT win) |
| Won in double overtime.....  | at Idaho State, Nov. 18, 2005 (91-89 DOT win)  |
| Lost in overtime.....        | at New Mexico, Feb. 13, 2025 (88-83 OT loss)   |
| Lost in double overtime..... | Nevada, Dec. 5, 1986 (76-72 DOT loss)          |

|   |  |
|---|--|
| Defeated a top-25 team at home.....           | Never                                      |
| Defeated a top-25 team on the road.....       | Never                                      |
| Defeated a top-25 team at a neutral site..... | Never                                      |
| Lost to a top-25 team.....                    | at No. 24 UNLV, Feb. 28, 2024 (63-57 loss) |
| Was ranked in the top-25.....                 | No. 18, March 8, 1994                      |

|                           |   |
|---------------------------|---|
| Had 40+ bench points..... | 40, vs. Furman, Dec. 18, 2024 (74-65 win)       |
| Had 50+ bench points..... | 62, College of Idaho, Nov. 18, 2024 (86-34 win) |

|                                  |  |
|----------------------------------|--|
| Made 35+ field goals.....        | 35, vs. Eastern Oregon, Nov. 6, 2024 (87-57 win)             |
| Made 40+ field goals.....        | 46, Multnomah, Nov. 7, 2022 (121-64 win)                     |
| Shot 50% or better.....          | 55.6% (35-63), at Wyoming, Feb. 1, 2025, (79-45 loss)        |
| Shot 55% or better.....          | 55.6% (35-63), at Wyoming, Feb. 1, 2025, (79-45 loss)        |
| Shot 60% or better.....          | 61.4% (35-57), at Louisville, Nov. 24, 2019 (98-82 loss)     |
| Shot 65% or better.....          | 65.9% (27-41), vs. UTEP, March 11, 2003 (75-58 win)          |
| Shot less than 30%.....          | 29.8% (17-57), at Colorado State, March 6, 2023 (59-52 loss) |
| Opponent shot 50% or better..... | 50.0% (25-50), at Colorado State, Jan. 21, 2025 (79-70 loss) |
| Opponent shot 55% or better..... | 56.3% (27-48), at Utah State, Feb. 23, 2019 (81-68 loss)     |
| Opponent shot less than 30%..... | 22.4% (13-58), College of Idaho, Nov. 18, 2024 (86-34 win)   |
| Opponent shot less than 25%..... | 22.4% (13-58), College of Idaho, Nov. 18, 2024 (86-34 win)   |

|                                     |  |
|-------------------------------------|--|
| Made 10+ 3-point FG.....            | 11, New Mexico, Jan. 28, 2025 (89-80 win)                      |
| Made 15+ 3-point FG.....            | 15, Weber State, Nov. 24, 2024 (96-46 win)                     |
| Shot 50% on 3pt (min. 10 att.)..... | 50.0% (12-24), Cal State Bakersfield, Dec. 6, 2023 (87-66 win) |
| Shot 60% on 3pt (min. 10 att.)..... | 66.7% (8-12), San Jose State, Jan. 30, 2023 (62-57 win)        |
| Shot 65% on 3pt (min. 10 att.)..... | 66.7% (8-12), San Jose State, Jan. 30, 2023 (62-57 win)        |
| Made zero 3-point FG.....           | 0-7, vs. North Dakota State, Nov. 25, 2022 (68-53 loss)        |
| Allowed 10+ 3-point FG.....         | 11, New Mexico, Jan. 28, 2025 (89-80 win)                      |

|   |  |
|---|--|
| Made 30+ free throws.....                       | 31, Southern Utah, Nov. 8, 2013 (90-86 loss)             |
| Made 35+ free throws.....                       | 42, Northwest Nazarene, Jan. 5, 1988, (117-41 win)       |
| Made 40+ free throws.....                       | 42, Northwest Nazarene, Jan. 5, 1988, (117-41 win)       |
| Shot 90% or better at the free throw line.....  | 92.3% (20-22), 11, New Mexico, Jan. 28, 2025 (89-80 win) |
| Shot 100% at the free throw line (min. 20)..... | Never  |

|   |  |
|---|--|
| Had 50+ rebounds.....                         | 67, vs. Utah State, March 10, 2024 (85-49 win)         |
| Had a rebounding margin of +10 or better..... | +15, Utah State, March 4, 2025 (72-59 win)             |
| Had a rebounding margin of +20 or better..... | +23, Weber State, Nov. 24, 2024 (96-46 win)            |
| Had a rebounding margin of +25 or better..... | +34, vs. Utah State, March 10, 2024 (85-49 win)        |
| Had a rebounding margin of +30 or better..... | +34, vs. Utah State, March 10, 2024 (85-49 win)        |
| Had a rebounding margin of -15 or worse.....  | -16, at New Mexico, Feb. 13, 2025 (88-83 OT loss)      |
| Had a rebounding margin of -20 or worse.....  | 21, at No. 5/4 Louisville, March 16, 2018 (74-42 loss) |

|                            |  |
|----------------------------|--|
| Had 15+ steals.....        | 16, San Jose State, Feb. 7, 2024 (73-42 win)   |
| Had 20+ steals.....        | 22, Southern Oregon, Nov. 11, 2011 (93-55 win) |
| Had 10+ blocked shots..... | 10, Air Force, Jan. 1, 2025 (66-55 win)        |

|   |  |
|---|--|
| Had 5 or fewer turnovers.....               | 5, at Utah State, Feb. 14, 2024 (73-57 win)            |
| Had 8 or fewer turnovers.....               | 7, at New Mexico, Feb. 13, 2025 (88-83 OT loss)        |
| Had 20+ turnovers.....                      | 20, Air Force, March 1, 2025 (75-68 loss)              |
| Had 25+ turnovers.....                      | 25, Air Force, Jan. 1, 2025 (66-55 win)                |
| Forced 20+ turnovers.....                   | 22, vs. North Dakota State, Dec. 19, 2024 (70-66 loss) |
| Forced 25+ turnovers.....                   | 24, Colorado, Nov. 10, 2024 (50-47 win)                |
| Forced 30+ turnovers.....                   | 30, vs. Saint Francis, Dec. 15, 2018 (78-64 win)       |
| Had a turnover margin of +10 or better..... | +11 (21-10), Wyoming, Feb. 18, 2025 (96-46 win)        |
| Had a turnover margin of +15 or better..... | +16 (28-12), Utah Tech, Dec. 6, 2024 (90-56 win)       |
| Had a turnover margin of -10 or worse.....  | -12 (20-8), Air Force, March 1, 2025 (75-68 loss)      |
| Had a turnover margin of -15 or worse.....  | -16 (25-9), Air Force, Jan. 1, 2025 (66-55 win)        |

## Team Streaks

|                                     |   |
|-------------------------------------|---|
| Won 5 consecutive games.....        | 6 games, Nov. 4, 2024 to Nov. 29, 2024    |
| Won 10 consecutive games.....       | 13 games, Feb. 12, 2020 to Jan. 2, 2021   |
| Won 15 consecutive games.....       | 15 games, Jan. 12, 2008 to March 12, 2008 |
| Lost 10 consecutive games.....      | 10 games, March 8, 1996 to Dec. 22, 1996  |
| Won 10 consecutive home games.....  | 13 games, Dec. 7, 2018 to Nov. 8, 2019    |
| Lost 5 consecutive home games.....  | 5 games, Jan. 30, 2012 to March 6, 2012   |
| Won 5 consecutive road games.....   | 7 games, Feb. 11, 2017 to Dec. 28, 2017   |
| Lost 10 consecutive road games..... | 11 games, Dec. 12, 2021 to Nov. 17, 2022  |

## Team Half

|   |  |
|---|--|
| Scored 30+ points in a quarter.....       | 30 (2nd Q), Utah Tech, Dec. 6, 2024 (90-56 win)        |
| Scored 50+ points in a half.....          | 51 (2nd H), San Jose State, Jan. 15, 2025, (93-64 win) |
| Scored 60+ points in a half.....          | 68 (1st H), Multnomah, Nov. 7, 2022 (121-64 win)       |
| Scored less than 20 points in a half..... | 18 (1st H)   |

## Scored fewer than 10 points in a quarter..... 8 (1st Q)

## Utah State, March 4, 2025 (72-59 win)

|                            |                     |
|----------------------------|---------------------|
| Shot 70% in a quarter..... | 70.0% (7-10, 3rd Q) |
|----------------------------|---------------------|

|  |
|--|
| .....at Colorado State, Jan. 21, 2025 (79-70 loss) |
|--|

|                         |                      |
|-------------------------|----------------------|
| Shot 60% in a half..... | 61.9% (13-21, 1st H) |
|-------------------------|----------------------|

|  |
|--|
| .....Air Force, Jan. 1, 2025 (66-55 win) |
|--|

|  |           |
|--|-----------|
| Allowed fewer than 10 points in a quarter..... | 6 (4th Q) |
|--|-----------|

|   |
|---|
| .....Wyoming, Feb. 18, 2025 (78-73 win) |
|---|

|                                      |   |
|--------------------------------------|---|
| Allowed 30+ points in a quarter..... | 30 (1st Q), 11, New Mexico, Jan. 28, 2025 (89-80 win) |
|--------------------------------------|---|

|                                   |  |
|-----------------------------------|--|
| Allowed 50+ points in a half..... | 54 (1st H), UNLV, Jan. 24, 2024 (84-63 loss) |
|-----------------------------------|--|

|   |            |
|---|------------|
| Allowed 20 or fewer points in a half..... | 20 (1st H) |
|---|------------|

|  |
|--|
| .....College of Idaho, Nov. 18, 2024 (86-34 win) |
|--|

|   |            |
|---|------------|
| Allowed 15 or fewer points in a half..... | 12 (1st H) |
|---|------------|

|  |
|--|
| .....College of Idaho, Nov. 18, 2024 (86-34 win) |
|--|

|                                    |   |
|------------------------------------|---|
| Led by 20+ points at halftime..... | +22 (42-20), Weber State, Nov. 24, 2024 (96-46 win) |
|------------------------------------|---|

|                                    |  |
|------------------------------------|--|
| Led by 25+ points at halftime..... | +31 (43-12), College of Idaho, Nov. 18, 2024 (86-34 win) |
|------------------------------------|--|

|                                    |  |
|------------------------------------|--|
| Led by 30+ points at halftime..... | +31 (43-12), College of Idaho, Nov. 18, 2024 (86-34 win) |
|------------------------------------|--|

|  |  |
|--|--|
| Trailed by 20+ points at halftime..... | -22 (45-23), vs. West Virginia, Nov. 30, 2024 (82-47 loss) |
|--|--|

|                       |   |
|-----------------------|---|
| Tied at halftime..... | 31-31, at New Mexico, Feb. 13, 2025 (88-83 OT loss) |
|-----------------------|---|

|                                      |   |
|--------------------------------------|---|
| Had 10+ blocked shots in a half..... | 11, UC Riverside, Nov. 15, 2023 (63-55 win) |
|--------------------------------------|---|

## Individuals

|                                 |   |
|---------------------------------|---|
| Freshman scored 20+ points..... | 20, Mya Hansen, vs. Utah State, March 5, 2023 (66-58 win) |
|---------------------------------|---|

|                                 |  |
|---------------------------------|--|
| Freshman scored 25+ points..... | 31, Mya Hansen, BYU, Dec. 1, 2022 (76-67 loss) |
|---------------------------------|--|

|                        |  |
|------------------------|--|
| Scored 20+ points..... | 25/21, Tatum Thompson/Dani Bayes, Wyoming, Feb. 18, 2025 (78-73 win) |
|------------------------|--|

|                        |  |
|------------------------|--|
| Scored 25+ points..... | 25, Tatum Thompson, Wyoming, Feb. 18, 2025 (78-73 win) |
|------------------------|--|

|                        |  |
|------------------------|--|
| Scored 30+ points..... | 31, Mya Hansen, BYU, Dec. 1, 2022 (76-67 loss) |
|------------------------|--|

|                        |  |
|------------------------|--|
| Scored 35+ points..... | 40, Jade Loville, at UNLV, Feb. 10, 2021 (85-59 win) |
|------------------------|--|

|                        |  |
|------------------------|--|
| Scored 40+ points..... | 40, Jade Loville, at UNLV, Feb. 10, 2021 (85-59 win) |
|------------------------|--|

## Scored 20+ points off the bench.....21, Tatum Thompson, Utah State, March 4, 2025 (72-59 win)

## Scored 10+ points in a quarter.....11, Natalie Pasco, Utah State, March 4, 2025 (72-59 win)

|                           |  |
|---------------------------|--|
| Made 10+ field goals..... | 10, Natalie Pasco, Utah State, Feb. 18, 2023 (89-41 win) |
|---------------------------|--|

|                         |  |
|-------------------------|--|
| Made 5+ 3-point FG..... | 5, Natalie Pasco, at Utah State, Feb. 14, 2024 (73-57 win) |
|-------------------------|--|

|                           |   |
|---------------------------|---|
| Made 10+ free throws..... | 11, Natalie Pasco, San Jose State, Jan. 15, 2025, (93-64 win) |
|---------------------------|---|

|                                |   |
|--------------------------------|---|
| Attempted 15+ free throws..... | 15, Braydey Hodgins, vs. Nevada, March 11, 2019 (72-67 win) |
|--------------------------------|---|

|                                |  |
|--------------------------------|--|
| Freshman had 10+ rebounds..... | 10, Trista Hull, Fresno State, Feb. 2, 2022 (62-56 loss) |
|--------------------------------|--|

|                       |   |
|-----------------------|---|
| Had 10+ rebounds..... | 11, Tatum Thompson, Air Force, March 1, 2025 (75-68 loss) |
|-----------------------|---|

|                       |   |
|-----------------------|---|
| Had 15+ rebounds..... | 16, Abby Muse, San Diego State, Jan. 13, 2024 (68-59 win) |
|-----------------------|---|

|                       |  |
|-----------------------|--|
| Had 20+ rebounds..... | 20, Mallory McGwire, at UNLV, Feb. 11, 2021 (74-62 loss) |
|-----------------------|--|

|                               |   |
|-------------------------------|---|
| Freshman had 10+ assists..... | 16, Mary Kay Naro, at Utah State, Feb. 18, 2021 (87-69 win) |
|-------------------------------|---|

|                      |  |
|----------------------|--|
| Had 10+ assists..... | 11, Mary Kay Naro, vs. Furman, Dec. 18, 2024 (74-65 win) |
|----------------------|--|

|                             |   |
|-----------------------------|---|
| Freshman had 5+ steals..... | 5, Teryn Gardner, Colorado, Nov. 10, 2024 (50-47 win) |
|-----------------------------|---|

|                    |   |
|--------------------|---|
| Had 5+ steals..... | 5, Teryn Gardner, Colorado, Nov. 10, 2024 (50-47 win) |
|--------------------|---|

|                    |  |
|--------------------|--|
| Had 8+ steals..... | 8, Shalen Shaw, Wyoming, Jan. 23, 2016 (58-49 win) |
|--------------------|--|

|                                    |  |
|------------------------------------|--|
| Freshman had 5+ blocked shots..... | 7, Abby Muse, at Air Force, Jan. 8, 2021 (71-49 win) |
|------------------------------------|--|

|                           |   |
|---------------------------|---|
| Had 5+ blocked shots..... | 5, Abby Muse, Nevada, Jan. 18, 2025 (61-53 win) |
|---------------------------|---|

|                          |   |
|--------------------------|---|
| Had a double-double..... | Tatum Thompson (16 points, 11 rebounds) |
|--------------------------|---|

|  |
|--|
| .....Air Force, March 1, 2025 (75-68 loss) |
|--|

|                                   |                                      |
|-----------------------------------|--------------------------------------|
| Freshman had a double-double..... | Trista Hull (11 points, 10 rebounds) |
|-----------------------------------|--------------------------------------|

|  |
|--|
| .....Fresno State, Feb. 2, 2022 (62-56 loss) |
|--|

|                          |  |
|--------------------------|--|
| Had a triple-double..... | Abby Muse (12 points, 11 rebounds, 10 assists) |
|--------------------------|--|

|   |
|---|
| .....vs. Utah State, March 10, 2024 (85-49 win) |
|---|

|                                    |   |
|------------------------------------|---|
| Had 20 points and 10 rebounds..... | Tatum Thompson (21 points, 14 rebounds) |
|------------------------------------|---|

|  |
|--|
| .....Colorado State, Feb. 8, 2025 (67-61 loss) |
|--|

|                                      |           |
|--------------------------------------|-----------|
| Had 5+ players score 10+ points..... | 5 players |
|--------------------------------------|-----------|

|   |
|---|
| .....Bayes 18, Thompson 18, Hansen 17, Pasco 16, Lalotte 10 |
|---|

|   |
|---|
| .....Evergreen State, Dec. 12, 2022 (97-31 win) |
|---|

## Had 2+ players with 20+ points.....Natalie Pasco, 25; Tatum Thompson, 21

## Utah State, March 4, 2025 (72-59 win)

|                                       |           |
|---------------------------------------|-----------|
| Had 2+ players with 10+ rebounds..... | 2 players |
|---------------------------------------|-----------|

|                                   |
|-----------------------------------|
| .....Abby Muse 11, Trista Hull 10 |
|-----------------------------------|

|   |
|---|
| .....vs. Utah State, March 10, 2024 (85-49 win) |
|---|

|  |           |
|--|-----------|
| Had 2+ players with a double-double..... | 2 players |
|--|-----------|

|   |
|---|
| .....Abby Muse (12 points, 11 rebounds, 10 assists), Trista Hull (10 points, 10 rebounds) |
|---|

|   |
|---|
| .....vs. Utah State, March 10, 2024 (85-49 win) |
|---|

2024-25 STATS



2023-24 Boise St. Women's Basketball  
Combined Team Statistics  
All games

Game Records

| Record         | Overall | Home | Away | Neutral |
|----------------|---------|------|------|---------|
| ALL GAMES      | 21-14   | 13-3 | 5-9  | 3-2     |
| CONFERENCE     | 10-8    | 6-3  | 4-5  | 0-0     |
| NON-CONFERENCE | 11-6    | 7-0  | 1-4  | 3-2     |

Score by Periods

| Team      | 1st | 2nd | 3rd | 4th | OT | TOT  |
|-----------|-----|-----|-----|-----|----|------|
| Boise St. | 570 | 502 | 584 | 579 | 6  | 2241 |
| Opponents | 429 | 512 | 550 | 563 | 9  | 2063 |

Team Box Score

| No.       | Player              |       |         |      | Total    |      | 3-Point  |      | F-Throw |       | Rebounds |      |      |      |     |    |     |     |     |     |      |      |  |  |
|-----------|---------------------|-------|---------|------|----------|------|----------|------|---------|-------|----------|------|------|------|-----|----|-----|-----|-----|-----|------|------|--|--|
|           |                     | GP-GS | MIN     | AVG  | FG-FGA   | FG%  | 3FG-3FGA | 3FG% | FT-FTA  | FT%   | OFF      | DEF  | TOT  | AVG  | PF  | DQ | A   | TO  | BLK | STL | PTS  | AVG  |  |  |
| 32        | PASCO, Natalie      | 35-34 | 1043:43 | 29.8 | 166-420  | .395 | 84-213   | .394 | 47-57   | .825  | 15       | 61   | 76   | 2.2  | 47  | 1  | 35  | 62  | 4   | 22  | 463  | 13.2 |  |  |
| 1         | HANSEN, Mya         | 34-34 | 926:42  | 27.3 | 109-280  | .389 | 45-107   | .421 | 84-102  | .824  | 13       | 91   | 104  | 3.1  | 63  | 1  | 103 | 95  | 7   | 32  | 347  | 10.2 |  |  |
| 33        | MUSE, Abby          | 35-35 | 868:04  | 24.8 | 106-213  | .498 | 0-0      | .000 | 50-96   | .521  | 77       | 216  | 293  | 8.4  | 85  | 1  | 47  | 72  | 91  | 39  | 262  | 7.5  |  |  |
| 23        | LALOTTE, Elodie     | 34-26 | 593:55  | 17.5 | 104-218  | .477 | 0-2      | .000 | 33-72   | .458  | 57       | 93   | 150  | 4.4  | 80  | 1  | 28  | 38  | 12  | 29  | 241  | 7.1  |  |  |
| 4         | BAYES, Dani         | 35-3  | 655:24  | 18.7 | 86-235   | .366 | 47-144   | .326 | 21-27   | .778  | 22       | 48   | 70   | 2.0  | 34  | 0  | 37  | 34  | 4   | 22  | 240  | 6.9  |  |  |
| 0         | THOMPSON, Tatum     | 35-1  | 489:11  | 14.0 | 80-196   | .408 | 13-46    | .283 | 54-76   | .711  | 27       | 94   | 121  | 3.5  | 49  | 1  | 32  | 46  | 12  | 33  | 227  | 6.5  |  |  |
| 22        | HULL, Trista        | 32-4  | 550:23  | 17.2 | 45-122   | .369 | 1-7      | .143 | 42-62   | .677  | 60       | 119  | 179  | 5.6  | 65  | 0  | 37  | 36  | 42  | 8   | 133  | 4.2  |  |  |
| 12        | NARO, Mary Kay      | 33-33 | 1007:44 | 30.5 | 50-157   | .318 | 17-76    | .224 | 20-28   | .714  | 28       | 95   | 123  | 3.7  | 47  | 0  | 142 | 67  | 23  | 31  | 137  | 4.2  |  |  |
| 15        | CHRISTENSEN, Alyssa | 29-3  | 276:28  | 9.5  | 25-63    | .397 | 10-23    | .435 | 7-8     | .875  | 17       | 54   | 71   | 2.4  | 20  | 0  | 12  | 18  | 10  | 1   | 67   | 2.3  |  |  |
| 2         | LOVROVICH, Linsey   | 28-0  | 256:09  | 9.1  | 22-57    | .386 | 5-13     | .385 | 14-24   | .583  | 14       | 22   | 36   | 1.3  | 11  | 0  | 15  | 17  | 9   | 8   | 63   | 2.3  |  |  |
| 11        | BURGESS, Kaitlin    | 23-1  | 124:23  | 5.4  | 13-36    | .361 | 8-25     | .320 | 4-6     | .667  | 2        | 5    | 7    | 0.3  | 11  | 0  | 7   | 10  | 0   | 1   | 38   | 1.7  |  |  |
| 24        | CLARK, Jayda        | 20-0  | 133:48  | 6.7  | 3-14     | .214 | 0-6      | .000 | 5-10    | .500  | 5        | 8    | 13   | 0.7  | 5   | 0  | 12  | 8   | 1   | 3   | 11   | 0.6  |  |  |
| 21        | MCQUIETOR, Sydney   | 15-1  | 34:29   | 2.3  | 1-9      | .111 | 0-0      | .000 | 4-4     | 1.000 | 4        | 4    | 8    | 0.5  | 5   | 0  | 2   | 2   | 0   | 2   | 6    | 0.4  |  |  |
| 30        | NARO, Mackenzie     | 11-0  | 22:35   | 2.1  | 1-3      | .333 | 1-3      | .333 | 0-0     | .000  | 0        | 0    | 0    | 0.0  | 0   | 0  | 0   | 0   | 1   | 1   | 3    | 0.3  |  |  |
| 5         | HUECKMAN, Allie     | 12-0  | 42:03   | 3.5  | 1-13     | .077 | 0-6      | .000 | 1-1     | 1.000 | 0        | 9    | 9    | 0.8  | 6   | 0  | 2   | 1   | 0   | 0   | 3    | 0.3  |  |  |
| Team      |                     |       |         |      |          |      |          |      |         |       | 73       | 83   | 156  |      |     |    |     | 22  |     |     |      |      |  |  |
| Total     |                     | 35    | 7025    |      | 812-2036 | .399 | 231-671  | .344 | 386-573 | .674  | 414      | 1002 | 1416 | 40.5 | 528 | 5  | 511 | 528 | 216 | 232 | 2241 | 64.0 |  |  |
| Opponents |                     | 35    | 7025    |      | 768-2081 | .369 | 204-695  | .294 | 323-453 | .713  | 341      | 884  | 1225 | 35.0 | 596 | 5  | 404 | 487 | 137 | 259 | 2063 | 58.9 |  |  |

Team Statistics

|                        | BOISE    | OPP      |
|------------------------|----------|----------|
| Scoring                | 2241     | 2063     |
| Points per game        | 64.0     | 58.9     |
| Scoring margin         | +5.1     | -        |
| Field goals-att        | 812-2036 | 768-2081 |
| Field goal pct         | .399     | .369     |
| 3 point fg-att         | 231-671  | 204-695  |
| 3-point FG pct         | .344     | .294     |
| 3-pt FG made per game  | 6.6      | 5.8      |
| Free throws-att        | 386-573  | 323-453  |
| Free throw pct         | .674     | .713     |
| F-Throws made per game | 11.0     | 9.2      |
| Rebounds               | 1416     | 1225     |
| Rebounds per game      | 40.5     | 35.0     |
| Rebounding margin      | +5.5     | -        |
| Assists                | 511      | 404      |
| Assists per game       | 14.6     | 11.5     |
| Turnovers              | 528      | 487      |
| Turnovers per game     | 15.1     | 13.9     |
| Turnover margin        | -1.2     | -        |
| Assist/turnover ratio  | 1.0      | 0.8      |
| Steals                 | 232      | 259      |
| Steals per game        | 6.6      | 7.4      |
| Blocks                 | 216      | 137      |
| Blocks per game        | 6.2      | 3.9      |
| Winning streak         | 0        | -        |
| Home win streak        | 0        | -        |
| Attendance             | 20708    | 22348    |
| Home games-Avg/Game    | 16-1294  | 14-1596  |
| Neutral site-Avg/Game  | -        | 5-1556   |

Team Results

| Date       | Opponent         | Score     | Att. |
|------------|------------------|-----------|------|
| 11/06/2023 | Col. of Idaho    | W 77-35   | 827  |
| 11/13/2023 | Weber St.        | W 76-47   | 765  |
| 11/15/2023 | UC Riverside     | W 63-55   | 689  |
| 11/20/2023 | Pepperdine       | W 63-47   | 1558 |
| 11/24/2023 | vs Santa Clara   | L 52-62   | 1000 |
| 11/25/2023 | vs Rutgers       | W 68-65   | 1000 |
| 11/29/2023 | UC Davis         | W 70-53   | 828  |
| 12/03/2023 | at Eastern Wash. | L 43-64   | 729  |
| 12/06/2023 | CSU Bakersfield  | W 87-66   | 838  |
| 12/09/2023 | at BYU           | L 50-65   | 2722 |
| 12/12/2023 | Rocky Mountain   | W 67-46   | 2732 |
| 12/20/2023 | at UC San Diego  | L 56-62   | 121  |
| 12/21/2023 | at San Diego     | W 62-54   | 203  |
| 12/30/2023 | at Wyoming       | L 47-61   | 2939 |
| 01/03/2024 | Nevada           | L 57-58   | 1506 |
| 01/06/2024 | at New Mexico    | W 64-56   | 5715 |
| 01/13/2024 | San Diego St.    | W 68-59   | 1511 |
| 01/17/2024 | at San Jose St.  | W 68-64   | 566  |
| 01/20/2024 | Utah St.         | W 76-41   | 1578 |
| 01/24/2024 | UNLV             | L 63-84   | 1058 |
| 01/27/2024 | at San Diego St. | L 54-79   | 2003 |
| 01/31/2024 | at Fresno St.    | W 60-50   | 932  |
| 02/07/2024 | San Jose St.     | W 73-42   | 954  |
| 02/10/2024 | Wyoming          | W 56-42   | 1492 |
| 02/14/2024 | at Utah St.      | W 73-57   | 287  |
| 02/17/2024 | at Nevada        | Lot 65-68 | 1442 |
| 02/21/2024 | New Mexico       | W 58-55   | 1454 |
| 02/24/2024 | Fresno St.       | W 70-65   | 1187 |
| 02/28/2024 | at UNLV          | L 57-63   | 1044 |
| 03/02/2024 | Air Force        | L 66-67   | 1731 |
| 03/05/2024 | at Colorado St.  | L 50-64   | 2174 |
| 03/10/2024 | vs Utah St.      | W 85-49   | 1212 |
| 03/11/2024 | vs Wyoming       | W 62-54   | 2683 |
| 03/12/2024 | vs San Diego St. | L 69-72   | 1887 |
| 03/20/2024 | at Montana       | L 66-92   | 1471 |



## 2024-25 CONFERENCE STATS



## 2024-25 Boise St. Women's Basketball Combined Team Statistics In Conference games

Page 1/1  
as of Mar 05, 2025

**Game Records**

| Record         | Overall | Home | Away | Neutral |
|----------------|---------|------|------|---------|
| ALL GAMES      | 7-11    | 6-3  | 1-8  | 0-0     |
| CONFERENCE     | 7-11    | 6-3  | 1-8  | 0-0     |
| NON-CONFERENCE | 0-0     | 0-0  | 0-0  | 0-0     |

**Score by Periods**

| Team      | 1st | 2nd | 3rd | 4th | OT | TOT  |
|-----------|-----|-----|-----|-----|----|------|
| Boise St. | 280 | 291 | 316 | 328 | 8  | 1223 |
| Opponents | 302 | 318 | 304 | 334 | 13 | 1271 |

**Team Box Score**

| No.       | Player              |       |        |      | Total    |      | 3-Point  |      | F-Throw |       | Rebounds |     |     |      |     |    |     |     |     |     |      |      |  |
|-----------|---------------------|-------|--------|------|----------|------|----------|------|---------|-------|----------|-----|-----|------|-----|----|-----|-----|-----|-----|------|------|--|
|           |                     | GP-GS | MIN    | AVG  | FG-FGA   | FG%  | 3FG-3FGA | 3FG% | FT-FTA  | FT%   | OFF      | DEF | TOT | AVG  | PF  | DQ | A   | TO  | BLK | STL | PTS  | AVG  |  |
| 0         | THOMPSON, Tatum     | 17-15 | 476:42 | 28.0 | 94-181   | .519 | 5-20     | .250 | 66-82   | .805  | 34       | 105 | 139 | 8.2  | 40  | 1  | 30  | 37  | 16  | 19  | 259  | 15.2 |  |
| 32        | PASCO, Natalie      | 18-13 | 475:05 | 26.4 | 90-211   | .427 | 34-83    | .410 | 29-34   | .853  | 13       | 21  | 34  | 1.9  | 20  | 1  | 16  | 20  | 4   | 6   | 243  | 13.5 |  |
| 1         | HANSEN, Mya         | 16-11 | 390:09 | 24.4 | 50-131   | .382 | 22-68    | .324 | 35-38   | .921  | 6        | 18  | 24  | 1.5  | 25  | 0  | 33  | 28  | 2   | 7   | 157  | 9.8  |  |
| 4         | BAYES, Dani         | 18-12 | 419:42 | 23.3 | 60-158   | .380 | 31-82    | .378 | 14-17   | .824  | 8        | 43  | 51  | 2.8  | 39  | 0  | 30  | 27  | 10  | 14  | 165  | 9.2  |  |
| 23        | LALOTTE, Elodie     | 18-3  | 293:34 | 16.3 | 48-113   | .425 | 0-0      | .000 | 16-38   | .421  | 27       | 49  | 76  | 4.2  | 31  | 0  | 16  | 16  | 6   | 11  | 112  | 6.2  |  |
| 33        | MUSE, Abby          | 18-18 | 379:23 | 21.1 | 36-74    | .486 | 0-0      | .000 | 22-27   | .815  | 32       | 66  | 98  | 5.4  | 44  | 0  | 23  | 27  | 32  | 13  | 94   | 5.2  |  |
| 3         | STEADMAN, Josee     | 7-0   | 40:53  | 5.8  | 10-22    | .455 | 3-9      | .333 | 2-2     | 1.000 | 2        | 3   | 5   | 0.7  | 2   | 0  | 4   | 3   | 2   | 0   | 25   | 3.6  |  |
| 12        | NARO, Mary Kay      | 17-17 | 483:40 | 28.5 | 11-49    | .224 | 3-22     | .136 | 14-16   | .875  | 14       | 35  | 49  | 2.9  | 27  | 0  | 77  | 28  | 7   | 18  | 39   | 2.3  |  |
| 9         | HUTTON, Libby       | 15-0  | 113:20 | 7.6  | 12-27    | .444 | 1-4      | .250 | 5-7     | .714  | 7        | 15  | 22  | 1.5  | 12  | 0  | 5   | 14  | 2   | 0   | 30   | 2.0  |  |
| 22        | GARDNER, Teryn      | 17-0  | 164:19 | 9.7  | 11-35    | .314 | 8-24     | .333 | 4-4     | 1.000 | 8        | 22  | 30  | 1.8  | 15  | 0  | 6   | 7   | 0   | 3   | 34   | 2.0  |  |
| 2         | LOVROVICH, Linsey   | 7-0   | 34:55  | 5.0  | 4-9      | .444 | 2-4      | .500 | 1-5     | .200  | 2        | 1   | 3   | 0.4  | 1   | 0  | 1   | 4   | 0   | 0   | 11   | 1.6  |  |
| 15        | CHRISTENSEN, Alyssa | 16-0  | 135:11 | 8.4  | 9-26     | .346 | 5-16     | .313 | 0-0     | .000  | 6        | 27  | 33  | 2.1  | 8   | 0  | 3   | 6   | 3   | 6   | 23   | 1.4  |  |
| 24        | CLARK, Jayda        | 13-1  | 112:35 | 8.7  | 6-15     | .400 | 2-5      | .400 | 4-4     | 1.000 | 3        | 8   | 11  | 0.8  | 7   | 0  | 12  | 10  | 1   | 0   | 18   | 1.4  |  |
| 5         | HUECKMAN, Allie     | 8-0   | 40:06  | 5.0  | 2-12     | .167 | 1-8      | .125 | 0-0     | .000  | 0        | 4   | 4   | 0.5  | 5   | 0  | 1   | 1   | 0   | 1   | 5    | 0.6  |  |
| 6         | SHARP, Milly        | 13-0  | 60:45  | 4.7  | 3-16     | .188 | 0-4      | .000 | 2-2     | 1.000 | 1        | 6   | 7   | 0.5  | 6   | 0  | 1   | 4   | 2   | 6   | 8    | 0.6  |  |
| 30        | NARO, Mackenzie     | 2-0   | 04:40  | 2.3  | 0-1      | .000 | 0-1      | .000 | 0-0     | .000  | 0        | 0   | 0   | 0.0  | 0   | 0  | 1   | 0   | 0   | 0   | 0    | 0.0  |  |
| Team      |                     |       |        |      |          |      |          |      |         |       | 39       | 28  | 67  |      |     |    |     | 15  |     |     |      |      |  |
| Total     |                     | 18    | 3625   |      | 446-1080 | .413 | 117-350  | .334 | 214-276 | .775  | 202      | 451 | 653 | 36.3 | 282 | 2  | 259 | 247 | 87  | 104 | 1223 | 67.9 |  |
| Opponents |                     | 18    | 3625   |      | 463-1101 | .421 | 120-359  | .334 | 225-290 | .776  | 193      | 440 | 633 | 35.2 | 280 | 8  | 250 | 210 | 57  | 133 | 1271 | 70.6 |  |

**Team Statistics**

|                        | BOISE           | OPP             |
|------------------------|-----------------|-----------------|
| <b>Scoring</b>         | <b>1223</b>     | <b>1271</b>     |
| Points per game        | 67.9            | 70.6            |
| Scoring margin         | -2.7            | -               |
| <b>Field goals-att</b> | <b>446-1080</b> | <b>463-1101</b> |
| Field goal pct         | .413            | .421            |
| <b>3 point fg-att</b>  | <b>117-350</b>  | <b>120-359</b>  |
| 3-point FG pct         | .334            | .334            |
| 3-pt FG made per game  | 6.5             | 6.7             |
| <b>Free throws-att</b> | <b>214-276</b>  | <b>225-290</b>  |
| Free throw pct         | .775            | .776            |
| F-Throws made per game | 11.9            | 12.5            |
| <b>Rebounds</b>        | <b>653</b>      | <b>633</b>      |
| Rebounds per game      | 36.3            | 35.2            |
| Rebounding margin      | +1.1            | -               |
| <b>Assists</b>         | <b>259</b>      | <b>250</b>      |
| Assists per game       | 14.4            | 13.9            |
| <b>Turnovers</b>       | <b>247</b>      | <b>210</b>      |
| Turnovers per game     | 13.7            | 11.7            |
| Turnover margin        | -2.1            | -               |
| Assist/turnover ratio  | 1.0             | 1.2             |
| <b>Steals</b>          | <b>104</b>      | <b>133</b>      |
| Steals per game        | 5.8             | 7.4             |
| <b>Blocks</b>          | <b>87</b>       | <b>57</b>       |
| Blocks per game        | 4.8             | 3.2             |
| <b>Winning streak</b>  | <b>1</b>        | <b>-</b>        |
| Home win streak        | 2               | -               |
| <b>Attendance</b>      | <b>15506</b>    | <b>16406</b>    |
| Home games-Avg/Game    | 9-1723          | 9-1823          |
| Neutral site-Avg/Game  | -               | 0-0             |

**Team Results**

| Date       | Opponent         |     | Score | Att. |
|------------|------------------|-----|-------|------|
| 12/29/2024 | at San Diego St. | L   | 59-74 | 2565 |
| 01/01/2025 | Air Force        | W   | 66-55 | 1649 |
| 01/04/2025 | UNLV             | L   | 57-61 | 1946 |
| 01/08/2025 | at Utah St.      | W   | 82-77 | 609  |
| 01/11/2025 | at Fresno St.    | L   | 62-68 | 1308 |
| 01/15/2025 | San Jose St.     | W   | 93-64 | 1251 |
| 01/18/2025 | Nevada           | W   | 61-53 | 1937 |
| 01/21/2025 | at Colorado St.  | L   | 70-79 | 1156 |
| 01/28/2025 | New Mexico       | W   | 89-80 | 1467 |
| 02/01/2025 | at Wyoming       | L   | 45-79 | 2716 |
| 02/05/2025 | at Nevada        | L   | 61-69 | 1362 |
| 02/08/2025 | Colorado St.     | L   | 61-67 | 1730 |
| 02/13/2025 | at New Mexico    | Lot | 83-88 | 4705 |
| 02/15/2025 | Fresno St.       | L   | 63-67 | 1752 |
| 02/18/2025 | Wyoming          | W   | 78-73 | 1594 |
| 02/26/2025 | at UNLV          | L   | 53-83 | 1234 |
| 03/01/2025 | at Air Force     | L   | 68-75 | 751  |
| 03/04/2025 | Utah St.         | W   | 72-59 | 2180 |

## 2024-25 BOISE STATE PHOTO ROSTER



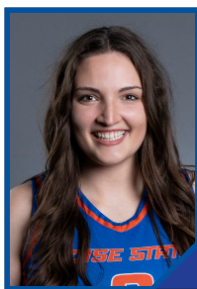
**0 - Tatum Thompson**  
F • JR  
Woodinville, Wash.  
Woodinville HS



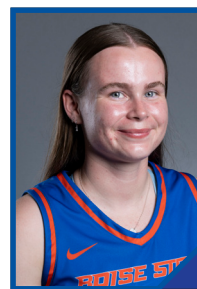
**1 - Mya Hansen**  
G • JR  
Billings, Mont.  
Billings Central Catholic HS



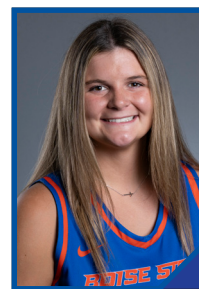
**2 - Linsey Lovrovich**  
G • SR  
Gig Harbor, Wash.  
Peninsula HS



**3 - Josee Steadman**  
F • RS-JR  
Blackfoot, Idaho  
Colorado Mesa



**4 - Dani Bayes**  
G • JR  
Brisbane, Australia  
Sheldon College



**5 - Allie Hueckman**  
F • RS-JR  
Burns, Ore.  
Burns HS



**6 - Milly Sharp**  
G • FR  
Ballarat, Australia



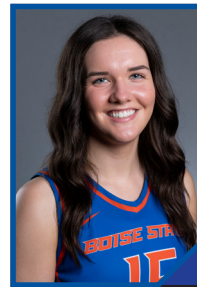
**9 - Libby Hutton**  
F • FR  
Perth, Australia



**10 - Madeline Cooke**  
C • 5TH  
Meridian, Idaho  
Cole Valley Christian HS



**12 - Mary Kay Naro**  
G • 5TH  
Beaverton, Ore.  
Beaverton HS



**15 - Alyssa Christensen**  
F • SR  
New Plymouth, Idaho  
New Plymouth HS



**22 - Teryn Gardner**  
G • FR  
Spokane, Wash.  
Mead HS



**23 - Elodie Lalotte**  
F • 5TH  
Paris, France  
Orangewood Academy



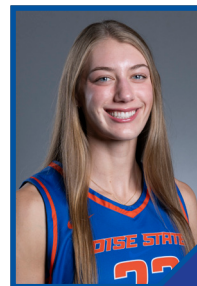
**24 - Jayda Clark**  
G • SR  
Richland, Wash.  
Richland HS



**30 - Mackenzie Naro**  
G • SR  
Beaverton, Ore.  
Beaverton HS



**32 - Natalie Pasco**  
G • JR  
Danville, Calif.  
San Ramon Valley HS



**33 - Abby Muse**  
F • 5TH  
Brentwood, Calif.  
Heritage HS

## COACHING STAFF



**Gordy Presnell**  
Head Coach  
20th season  
38th overall



**Heather Sower**  
Assistant Coach  
23rd season  
30th overall



**Cariann Ramirez**  
Assistant Coach  
Ninth season  
Ninth overall



**Mike Petrino**  
Assistant Coach  
Fourth season  
29th overall



**Jackie Robinson**  
Assistant Coach  
First season  
Sixth overall



**Bree Blanding**  
Director of Operations  
Second season  
Second overall

## PRONUNCIATION GUIDE

Mya Hansen ..... MY-uh  
Allie Hueckman..... HECK-man  
Elodie Lalotte .....El-uh-DEE Luh-lot  
Linsey Lovrovich.....LAHV-roh-vich  
Mackenzie Naro..... Narrow

Mary Kay Naro ..... Narrow  
Gordy Presnell..... PRESS-nell  
Lauren Sale .....Saul-aye  
Heather Sower .....So-er