



COLORADO STATE

WOMEN'S BASKETBALL



2024-25 SCHEDULE

OVERALL: (22-9) // MW: (13-5)
HOME: (12-5) // AWAY: (8-2) // NEUTRAL: (2-2)

OCTOBER

O 29 Regis (EXH) W, 68-57

NOVEMBER (6-3)

N 4 San Francisco W, 52-47

N 8 Oregon State W, 65-59

N 13 at BYU L, 69-55

N16 Columbia College (Mo.) W, 85-28

N 19 Southern W, 78-47

N 23 Northern Arizona L, 84-80

N 25 Black Hills State W, 59-39

N 29 vs. Kent State[^] (San Juan, Puerto Rico) W, 60-54

N 30 vs. Brown[^] (San Juan, Puerto Rico) L, 69-63

DECEMBER (4-1)

D 8 Gonzaga W, 74-72 ^(OT)

D 16 UTEP W, 70-52

D 20 vs. Georgia[%] (San Diego, Calif.) W, 72-56

D 21 vs. Stephen F. Austin[%] (San Diego, Calif.) L, 80-69

D 29 at Utah State* W, 83-74

JANUARY (5-2)

J 1 San Diego State* W, 67-56

J 4 San Jose State* W, 87-51

J 8 at UNLV* L, 70-61

J 15 at San Diego State* W, 62-58

J 18 New Mexico* L, 78-74

J 21 Boise State* W, 79-70

J 25 at Wyoming* W, 61-56

FEBRUARY (6-2)

F 1 Air Force* L, 75-71

F 4 at New Mexico* W, 69-63

F 8 at Boise State* W, 67-61

F 12 Utah State* W, 72-54

F 15 at Air Force* W, 65-58

F 19 Fresno State* W, 68-48

F 22 UNLV* L, 69-65

F 26 at Nevada* W, 61-45

MARCH (1-1)

M 1 Wyoming* L, 68-55

M 4 at San Jose State* W, 90-70

M 10 MW QF vs. #6 Fresno State 8:30 PM

M 11 Mountain West Semifinal 8:30 PM

M 12 Mountain West Championship 8:30 PM

Home games in **Bold** / All times Mountain
[^]Puerto Rico College Sports Tours Thanksgiving Clasico
[%] San Diego State Classic
* MW Game

MW
QF

NO. 6 FRESNO ST. (18-14, 8-10 MW)

MONDAY, MARCH 10, 2025

Thomas & Mack Center // Las Vegas, Nev.

8:30 PM MT

Radio: Power 102.9 • Varsity Network • Sirius XM // TV: MW Network



TALKIN' RAMS

(Updated 3/6/25)

- **Protect The Rock:** The Rams do a lot of good things, but one of their secrets to success is actually something they DON'T do: Turn the ball over. The Rams have led the nation in fewest turnovers per game each of the last three seasons, coughing it up only 9.1 times per game in 2023-24. Despite the new-look roster, that trait has passed down to this year's squad as the Rams are giving up an average of just 8.8 turnovers, which is top of the country once again and the only mark below 10.8. Over the past decade of women's college basketball, only two programs have averaged less than nine turnovers a game across a season: Villanova (2014-15, 2015-16), and Colorado State (2022-23).
- **Among The Best:** Emma Ronsiek has been one of the most well-rounded players in the country this season with her ability to impact the game in multiple ways. Ronsiek is one of only 11 players nationally to average 18.0 points, 6.0 rebounds and 2.5 assists against Division 1 opponents this season, joining the likes of women's basketball stars JuJu Watkins (Southern California) and Lauren Betts (UCLA).
- **Sisters Are Serving:** Sisters Emma and Hannah Ronsiek have lived up to the hype of their reunion as they combine to average 26.9 points and 11.9 rebounds per game. Together the sisters lead the Rams in nearly every major statistical category, including points (Emma, 17.7), rebounds (Hannah, 6.0), assists (Emma, 2.7), steals (Hannah, 1.4) and blocks (Hannah, 0.9).
- **60's The Limit:** Colorado State has been one of the top defensive teams in the Mountain West, holding opponents to just 37.2% shooting from the field (1st in MW, 32nd nationally) and limiting teams to just 60.6 points per game (2nd in the MW). 60 has been the target number for the Rams defensively as 16 of their 22 wins this season have come when holding their opponents below that mark. CSU is a perfect 16-0 when holding opponents below that 60-point limit.
- **Quite The Career:** Emma Ronsiek has enjoyed an incredible college basketball career and has been one of the most prolific players in the nation across the past five seasons. Ronsiek is one of just three active players to record 2,000 points, 750 rebounds and 350 assists in their NCAA DI careers, and is the only one playing in the Mountain West this season.
- **Don't Put Them On The Line:** The Rams have not wasted their chances at the free-throw line this season, shooting 78.3% from the line as a unit which is first in the Mountain West and 16th nationally. CSU's pair of Division I transfers have each been among the best free-throw shooters in the country over the past couple of seasons. Emma Ronsiek was the 12th-best shooter from the charity stripe last year, making 122-of-137 attempts (89.1). Hannah Simental was sixth in the nation with a 91.2% clip (104-114) in 2022-23, but did not take enough attempts to qualify for national rankings last season. Against Boise State, Ronsiek tied the program's best shooting performance from the charity stripe with a 12-for-12 performance.

2024-25 TEAM COMPARISON

RAMS	69.0	60.6	.428	.353	.783	33.5	8.8	14.2	2.9	6.9
	SCORING OFF.	SCORING DEF.	FG%	3FG%	FT%	REBOUNDS	TURNOVERS	ASSISTS	BLOCKS	STEALS
BULLDOGS	64.1	65.3	.388	.341	.748	34.2	13.6	12.2	2.6	6.3



QUICK FACTS

General Information

Location	Fort Collins, Colo.
Founded	1870, Colorado Agricultural College
Enrollment	33,648
Nickname	Rams
Colors	Green and Gold
Home Arena (Capacity)	Moby Arena (8,083)
Conference	Mountain West
President	Amy Parsons
Athletic Director	John Weber
Senior Women's Admin	Shalini Shanker
Athletics Website	www.CSURams.com

Program History

First Year of Women's Basketball	1974-75
Overall All-Time Record	789-681 (.535)
MW Record	227-197 (.528)
Home Record	477-243 (.664)
Road Record	226-371 (.372)
Neutral Record	88-72 (.555)
NCAA Appearances/Last	Six/2016
NCAA Best Finish	Quarterfinals
WNIT Appearances/Last	Eight/2023
MW Tournament Titles:	2001, '16
MW Regular Season Titles:	2002, '14, '15, '16, '17

2023-24 Season Information

2023-24 Overall Record	20-11
Conference Record/Finish	10-8/5th
Home	13-2
Away	5-9
Neutral	2-0
MW Tournament	1-1
Letterwinners Returning/Lost	4/7
Starters Returning/Lost	2/2
Newcomers	8

Basketball Staff

Head Coach	Ryun Williams (13th Season)
Alma Mater	South Dakota, '92
CSU Record/Years	254-146 (.630) / 12
MW Record	144-86 (.623)
Career Record/Years	566-339 (.624) / 29

Assistant Coaches

Rico Burkett (Seventh Season)
Buck Scheel (First Season)
Kasondra McKay (Second Season)
Annie Brady (First Season)

Director of Operations

Marcie Johnston (25th Season)

Athletic Trainer

Annie Lopez-Bauman (17th Season)

Basketball Communications

Basketball Contact	Matt Brumley
Phone	(970) 914-2126
Email	matt.brumley@colostate.edu

Media Information

All media requests for interviews with any member of the basketball program will be arranged through the Colorado State Strategic Communications and Brand Enhancement Office and should be directed at Matt Brumley at least 24 hours in advance. Colorado State is tentatively scheduled to practice from 8:00 - 10:15 a.m. during the season.

* Please note, practice times are subject to change on short or no notice.

COLORADO STATE ROSTERS

NUMERICAL

NO.	NAME	POS.	HT.	CL.	HOMETOWN/PREVIOUS SCHOOL
0	Kaylee Headrick	F	5-10	Jr.	Bluffdale, Utah / Riverton HS / College of Southern Idaho
1	Kloe Froebe	G	5-8	Fr.	Lincoln, Illinois / Lincoln Community HS
2	Brooke Carlson	G	5-8	Fr.	Batavia, Ill. / Batavia HS
3	Avree Antony	G	5-10	R-Fr.	Sun Prairie, Wis. / Sun Prairie HS
5	Jadyn Fife	F	6-0	R-So.	North Richland Hills, Texas / Liberty Christian School
10	Joseana Vaz	F	6-0	R-Sr.	Praia, Cape Verde / Casper College
12	Ann Zachariah	F	6-2	R-So.	Kerala, India / Kansas State Life Prep Academy / Howard College
14	Marta Leimane	G	6-0	Jr.	Ventspils, Latvia / Riga 47th Secondary
20	Sanna Ström	G	6-0	Sr.	Lulea, Sweden / Rig Lulea / Kansas
21	Emma Ronsiek	F	6-2	Gr.	Sioux Falls, S.D. / O'Gorman HS / Creighton
23	Caitlin Kramer	G	6-3	Fr.	Colorado Springs, Colo. / Air Academy
24	Olivia Pawlicki	F	6-1	Fr.	Shakopee, Minn. / Shakopee HS
30	Hannah Ronsiek	G	5-11	Jr.	Sioux Falls, S.D. / O'Gorman HS
31	McKenna Murphy	G	5-11	Fr.	Omaha, Neb. / Elkhorn North HS
32	Hannah Simental	G	5-8	Gr.	Pueblo, Colo. / Pueblo HS / Northern Colorado

ALPHABETICAL

NO.	NAME	POS.	HT.	CL.	HOMETOWN/PREVIOUS SCHOOL
3	Avree Antony	G	5-10	R-Fr.	Sun Prairie, Wis. / Sun Prairie HS
2	Brooke Carlson	G	5-8	Fr.	Batavia, Ill. / Batavia HS
5	Jadyn Fife	F	6-0	R-So.	North Richland Hills, Texas / Liberty Christian School
1	Kloe Froebe	G	5-8	Fr.	Lincoln, Illinois / Lincoln Community HS
0	Kaylee Headrick	F	5-10	Jr.	Bluffdale, Utah / Riverton HS / College of Southern Idaho
23	Caitlin Kramer	G	6-3	Fr.	Colorado Springs, Colo. / Air Academy
14	Marta Leimane	G	6-0	Jr.	Ventspils, Latvia / Riga 47th Secondary
31	McKenna Murphy	G	5-11	Fr.	Omaha, Neb. / Elkhorn North HS
24	Olivia Pawlicki	F	6-1	Fr.	Shakopee, Minn. / Shakopee HS
21	Emma Ronsiek	F	6-2	Gr.	Sioux Falls, S.D. / O'Gorman HS / Creighton
30	Hannah Ronsiek	G	5-11	Jr.	Sioux Falls, S.D. / O'Gorman HS
32	Hannah Simental	G	5-8	Gr.	Pueblo, Colo. / Pueblo HS / Northern Colorado
20	Sanna Ström	G	6-0	Sr.	Lulea, Sweden / Rig Lulea / Kansas
10	Joseana Vaz	F	6-0	R-Sr.	Praia, Cape Verde / Casper College
12	Ann Zachariah	F	6-2	R-So.	Kerala, India / Kansas State Life Prep Academy / Howard College

COACHING STAFF

Head Coach

Ryun Williams, 13th Season (South Dakota '92)

Assistant Coaches

Rico Burkett, Seventh Season (North Dakota '93)

Buck Scheel, First Season (Waldorf '07)

Kasondra McKay, Second Season (North Texas '12)

Annie Brady, First Season (Colorado State '20)

AVREE Antony

Avery

JOSEANA VAZ

joe-zee-ON-AH (Joe) VAH-z

JADYN FIFE

JAY-den F-HIGH-f

RICO Burkett

REE-Co

Kloe **FROEBE**

FRO-bee

KASONDRA McKay

kay-SAWN-drah

Marta **LEIMANE**

LAY-munn-uh

Audio pronunciations are also on the roster on CSURams.com

Olivia **PAWLICKI**

puh-LICKY

Hannah/Emma **RONSIEK**

RON-sick

Hannah **SIMENTAL**

SEH-min-tall

SANNA Ström

SAW-nah

LAST STARTING LINEUP



BROOKE CARLSON

G • FR • 5-8

Batavia, Ill.

MIN:	20.2
PPG:	7.6
FG%:	.387
RPG:	1.5
APG:	2.5



MARTA LEIMANE

G • JR • 6-0

Ventspils, Latvia

MIN:	24.2
PPG:	6.5
FG%:	.410
RPG:	3.0
APG:	2.3



EMMA RONSIEK

F • GR • 6-2

Sioux Falls, S.D.

MIN:	37.0
PPG:	17.7
FG%:	.421
RPG:	5.9
APG:	2.7

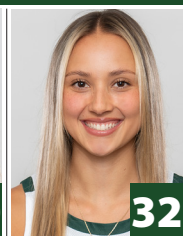


HANNAH RONSIEK

G • JR • 5-11

Sioux Falls, S.D.

MIN:	33.1
PPG:	9.2
FG%:	.445
RPG:	6.0
APG:	1.6



HANNAH SIMENTAL

G • GR • 5-8

Pueblo, Colo.

MIN:	28.7
PPG:	10.1
FG%:	.430
RPG:	2.0
APG:	1.4



HEAD COACH RYUN WILLIAMS (13TH SEASON AT COLORADO STATE / 30TH OVERALL)



At Colorado State

» Head Coach (2012-present)

Other Coaching Experience

» Head Coach, South Dakota (2008-12)
 » Head Coach, Wayne State (1998-2008)
 » Head Coach, Sheridan College (1995-98)

Education

» Sheridan College
 Associates Degree (1990)
 » University of South Dakota
 Bachelor's Degree (1992)
 Master's Degree (1997)

Accolades

» Five Mountain West Championships (2013-14, 2014-15, 2015-16*, 2016-17)
 » Two-time Mountain West Coach of the Year (2014, 2016)
 » Seven postseason appearances, including the 2015-16 NCAA Tournament
 » 2014 Russell Athletic/WBCA NCAA Division I Regional Coach of the Year award
 » Colorado State's winningest coach

Team Highlights

» Program record consecutive home wins: 22 at Moby Arena (2015-17)
 » Program record win streak: 28 in 2015-16
 » Program record road win streak: 12 in 2015-16
 » 2016 NCAA Tournament appearance and national ranking of No. 22
 » MW single season win record: 31-2 (.939) in 2015-16, also second-highest in CSU history
 » Undefeated home season: 15-0 in 2015-16; CSU's second-time ever (1998-99)

Year-by-Year Record

Year	School	Record	Pct.	Conf.	Pct.	Place	Postseason
1995-96	Sheridan College	7-21		N/A		N/A	--
1996-97	Sheridan College	19-12		N/A		N/A	--
1997-98	Sheridan College	28-5		N/A		N/A	--
THREE SEASONS		54-38	(.587)	N/A			
1998-99	Wayne State	15-12		N/A		N/A	--
1999-00	Wayne State	19-9		14-4		4th	--
2000-01	Wayne State	18-9		12-6		4th	--
2001-02	Wayne State	12-15		9-9		7th	--
2002-03	Wayne State	17-11		11-7		5th	--
2003-04	Wayne State	13-15		6-10		7th	--
2004-05	Wayne State	20-11		7-7		6th	--
2005-06	Wayne State	27-4		13-1		1st	NCAA DII First Round
2006-07	Wayne State	19-10		11-7		4th	--
2007-08	Wayne State	22-10		12-6		2nd	NCAA DII Regional Semifinal
10 SEASONS		182-106	(.632)	95-57			TWO APPEARANCES
2008-09	South Dakota	18-11		N/A		N/A	--
2009-10	South Dakota	15-16		6-6		4th	--
2010-11	South Dakota	20-12		10-2		2nd	WBI Second Round
2011-12	South Dakota	23-8		12-6		3rd	WNIT Second Round
FOUR SEASONS		76-47	(.618)	28-14			TWO APPEARANCES
2012-13	Colorado State	11-19		7-9		6th, MW	--
2013-14	Colorado State	25-8		15-3		1st, MW	WNIT First Round
2014-15	Colorado State	23-8		15-3		1st, MW	WNIT First Round
2015-16	Colorado State	31-2		18-0		1st, MW	NCAA First Round
2016-17	Colorado State	25-9		15-3		1st, MW	WNIT Second Round
2017-18	Colorado State	21-12		11-7		T4th, MW	WNIT Second Round
2018-19	Colorado State	8-22		2-16		11th, MW	--
2019-20	Colorado State	12-18		6-12		10th, MW	--
2020-21	Colorado State	15-6		11-5		3rd, MW	--
2021-22	Colorado State	21-12		9-9		6th, MW	WNIT First Round
2022-23	Colorado State	20-12		12-6		3rd, MW	WNIT
2023-24	Colorado State	20-11		10-8		5th, MW	--
2024-25	Colorado State	22-9		13-5		--	--
13 SEASONS		254-148	(.632)	144-86	(.626)		SEVEN APPEARANCES
NCAA DI TOTAL		17 SEASONS	330-195	(.629)	172-100	(.632)	NINE APPEARANCES
TOTALS		30 SEASONS	566-339	(.625)	267-157	(.629)	11 APPEARANCES

**NUMBERS TO KNOW**

(Updated 3/6/25)

8.8

No team is better than Colorado State at protecting the ball as the Rams have led the country in turnovers each of the past three seasons. This year the Rams are the only team in the country averaging less than 10 giveaways (8.8).

13

Colorado State has used 13 unique starting lineups throughout the course of the season, with nine different Rams making starts.

60

60 is the limit with Colorado State defensively, as 16 of the Rams' 22 wins have come when holding the opposition below 60 points.

1.61

Colorado State's assist/turnover ratio of 1.61 is the fourth best in the nation and best in the Mountain West.

78.3

Teams should think twice before sending Colorado State to the free-throw line as the Rams are converting 78.3% from the charity strip, the 16th-best mark in the nation.

RAMS NOTES...

(Updated 3/6/25)

Tip Off

The quest for the MW Tournament Championship is on as No. 3 seed Colorado State plays in the quarterfinal round on March 10 at 8:30 p.m. MT.

The Week That Was

Colorado State closed out the regular season with a dominant 90-70 win over San Jose State. It was far from smooth sailing, however, as the Rams trailed entering halftime, but thanks to six double-digit scorers CSU ended the season on a high note.

Ryun "W"illiams

The winningest coach in program history, Ryun Williams earned the 250th victory of his 13-season career at Colorado State earlier this season. Williams has also collected the most Mountain West wins among active coaches in the league, passing Boise State's Gordy Presnell over the course of this season. Williams' 144 wins in MW play are second only behind Joe Legerski's 159 (Wyoming, 2003-19).

Closing Time

Colorado State rarely gives up its leads as the Rams are 18-2 when leading after the first quarter this season. CSU has closed out wins at a good rate, posting a 17-2 record when leading at halftime and a 20-1 record when on top entering the fourth quarter.

Colorado Cold

Colorado State has been one of the top defenses in the nation this season, stifling opponents to just 37.2% shooting from the floor which leads the Mountain West and is top-35 nationally.

Road Rams

Colorado State has been solid when playing away from home this season, posting an 8-2 record with its only true-road losses being to BYU (NET 87) and UNLV (NET 47). It is the program's best winning percentage on the road since 2015-16 season (.923, 12-1).

Triple Threat

Colorado State has been deadly from deep this season, converting 35.3% of their 3-point attempts which leads the MW and top-35 nationally. The 3-pointer has been a large part of the Rams' gameplan as they make an average of 7.9 shots from deep per game (3rd in MW). The Ronsiek Sisters and Hannah Simental have been lighting it up from distance as they each shoot better than 35% and have combined to make 175 of CSU's 246 3-pointers this season (71.1%).

Bucket-Getter

Emma Ronsiek came to Colorado State with a career scoring average of 14.1 points per game and is currently having the best season of her career in the Green and Gold by scoring an average of 17.7 per game. Ronsiek has reached double-digits in all but two games this season and has 13 games with 20-or-more points. Ronsiek has scored 550 total points this season, which is 32nd nationally and 10th in CSU history.

SIM3NTAL

Hannah Simental hit her 300th-career 3-pointers at Nevada on Feb. 26, making her one of 15 active DI players in that party. The Northern Colorado transfer has always been a prolific scorer with a career 3-point percentage of 40.0 and more than 1,750 career points.

Keep It Clean

Colorado State has been one of the cleanest teams in the nation this season, fouling just 13.5 times per game which is the 17th-fewest. CSU is surrendering just 10.0 points per game from free-throws, which is the second fewest in the MW.

Ratio'd

Colorado State takes care of the ball, while also creating assists. The Rams were No. 3 in the nation in assist/turnover ratio in 2023-24 with a 1.60 mark. That trend has continued into the 2024-25 season as CSU is fourth nationally and lead the MW (1.61).

1-2 Punch

CSU has an exciting pair of freshmen guards from Illinois in No. 1 Kloe Froebe (Lincoln) and No. 2 Brooke Carlson (Batavia). After being named the Mountain West Preseason Freshman of the Year, Froebe earned the league's Freshman of the Week award in just her second week of action, and three more times since. Not to be outdone, Carlson has captured it twice herself. Froebe (8.6 ppg) and Carlson (7.6 ppg) are the Rams' fourth and fifth leading scorers, respectively, and have played in every game this season while combining for 32 starts. The pair knew of each throughout high school, but have become roommates and best friends at CSU.

Secretary of Defense

Hannah Ronsiek has been one of the top defensive players in the Mountain West this season. In MW play, Ronsiek is the only player in the league to rank in the top 10 in defensive rebounding (3rd, 6.28), blocks (6th, 1.06) and steals (10th, 1.44). Her defensive ability is a big reason why she ranks fourth in the MW in minutes (34.64).



RAM NOTES...

(Updated 3/6/25)

Director of Boards

Despite standing just 5-foot-11, Hannah Ronsiek has established herself as one of the best rebounders in CSU history. Ronsiek currently ranks seventh with 430 career defensive rebounds, and has two of the Rams' top-10 defensive rebounding seasons: 180/5th (24-25), 169/10th (23-24).

We'll Start On D

Colorado State has won the opening tip only five times this season (5-26 overall). After controlling it against Black Hills State (Nov. 25), CSU went 15-straight games without doing so before breaking the spell against New Mexico on Feb. 4. Via a poll of national DI basketball SID's, it is the fewest reported jump balls won in the country.

Moby Madness

Moby Madness is the best home court advantage in the Mountain West, and the numbers back it up. Across the past five seasons (since 2020-21) Colorado State men's and women's basketball combine for the best home winning percentage in the league (.817). CSU is the only school in the conference to win 80% of its home games during that stretch.

Rams Respond

Colorado State has responded well after losses, not dropping back-to-back games.

Director of Boards

Despite standing just 5-foot-11, Hannah Ronsiek has established herself as one of the best rebounders in CSU history. Ronsiek currently ranks seventh with 430 career defensive rebounds, and has two of the Rams' top-10 defensive rebounding seasons: 180/5th (24-25), 169/10th (23-24).

Snappin' Streaks

With an 8-2 road record this season, CSU snapped some lengthy losing streaks at a number of tricky MW venues this season:

Opponent	Streak	Last Win
New Mexico	8	2017
San Diego St.	5	2018
Air Force	4	2021
Wyoming	3	2020

"Ronnie 2K"

Emma Ronsiek reached a significant career milestone in the Jan. 25 game at Wyoming, surpassing 2,000 points scored in her career. The fifth-year forward reached the mark in poetic fashion, using her signature high-post turnaround move early in the third quarter. The Creighton transfer came to CSU with 1,622 career points.

Net Positive

Colorado State enters the week with a NET ranking of 86, which makes it one of three Mountain West schools inside the top 100: UNLV (47), Wyoming (77). In the RPI, Colorado State is ranked 82nd which is also third behind UNLV (40) and Wyoming (57).

Dominating The Awards

Colorado State dominated the weekly Mountain West awards, winning player of the week more than any other team:

MW Player of the Week (5)

- » Emma Ronsiek (Nov. 11, Dec. 23, Jan. 6, Feb. 10)
- » Brooke Carlson (Dec. 9)

MW Freshman of the Week (6)

- » Kloe Froebe (Nov. 18, Jan. 20, Feb. 17, March 7)
- » Brooke Carlson (Dec. 9, Jan. 6)

We'll Take 'Em All

CSU came close to sweeping the major Mountain West preseason awards. Emma Ronsiek was named the Co-Preseason Player of the Year and Preseason Newcomer of the Year, while Froebe was tabbed the Preseason Freshman of the Year.

She's On The List

Emma Ronsiek has racked up a plethora of recognitions this season:

- » Mountain West Co-Preseason Player of the Year
- » Mountain West Preseason Newcomer of the Year
- » Becky Hammon Mid-Major Player of the Year Preseason Watch List
- » Becky Hammon Mid-Major Player of the Year Mid-Season Watch List
- » Katrina McClain Power Forward of the Year Watch List
- » World Exposure Top-50 Mid-Major Women's Basketball Players to Watch.

Powerful Win

When Colorado State defeated Georgia in the San Diego Classic, it marked the first SEC win for the program since Becky Hammon led the Rams to a win over No. 20 Florida in 1998. The Mountain West did its share of flexing against the Power 4 conferences as the Rams were one of five teams from the league to collect P4 wins:

- » Boise State def. Colorado (Big 12)
- » Colorado State def. Georgia (SEC)
- » San Diego State def. Wisconsin (Big 10)
- » UNLV def. UCF (Big 12)
- » Wyoming def. Virginia (ACC)

MW teams combined to have at least one win against the ACC, Big East, Big 12, Big Ten and SEC for the first time since 2009-10.

STATISTICAL RANKINGS

(Updated 3/6/25)

Team Category	Mark	Natl.	MW
Turnovers Per Game	8.8	1	1
Assist/Turnover Ratio	1.61	4	1
Fouls Per Game	13.5	16	1
FT%	78.3	11	1
FG% Defense	37.2	32	1
3FG%	35.3	35	1
3FG Per Game	7.9	45	3
Turnover Margin	4.06	51	2
Def. Reb. Per Game	27.2	54	2
Scoring Defense	60.6	96	3
FT Made Per Game	12.35	111	2

Individual Category	Mark	Natl.	MW
Emma Ronsiek			
Minutes Per Game	37.05	7	1
Total Points	550	32	2
FG Attempts	449	38	1
Points Per Game	17.7	62	3
3FGs	69	51	2
FGs	189	61	2
FTs	103	97	3
3FG Per Game	2.23	91	2

MW TOURNAMENT HISTORY

CSU vs. Mountain West Tournament: 22-23 (.489)

Current Members: 20-20

At Thomas & Mack: 21-20

Trend: Rams earn first-round bye for third-straight season.

Date	Opponent	W/L	Score
First Round (8-8)			
3/8/2000	#6 Wyoming	W	79-57
3/7/2001	#7 Wyoming	W	70-59
3/6/2002	#8 Air Force	W	79-68
3/12/2003	#6 Wyoming	W	59-56
3/10/2004	#5 Wyoming	L	61-67
3/9/2005	#3 BYU	L	65-70
3/7/2006	#9 SDSU	W	69-58
3/6/2007	#9 Air Force	L	47-46
3/11/2008	#8 UNLV	W	68-49
3/10/2009	#5 Wyoming	W	65-56
3/9/2010	#5 New Mexico	L	54-67
3/8/2011	#9 Air Force	L	63-66
3/7/2012	#6 Boise State	L	68-83
3/10/2019	#6 Utah State	W	62-59
3/1/2020	#7 Air Force	L	48-60
3/6/2022	#11 San Jose State	W	82-43

Second Round (1-2)			
3/8/2006	#1 BYU	L	65-45
3/12/2008	#1 Utah	W	60-52
3/11/2009	#4 New Mexico	L	48-62

Quarterfinals (7-3)			
3/14/2013	#3 Wyoming	L	58-60
3/11/2014	#8 Utah State	W	72-67
3/10/2015	#8 San Jose State	L	55-64
3/8/2016	#8 San Diego State	W	53-41
3/7/2017	#8 San Jose State	W	65-60
3/6/2018	#4 Fresno State	W	71-55
3/8/2021	#6 Boise State	L	65-78
3/7/2022	#3 Wyoming	W	51-38
3/6/2023	#6 Boise State	W	59-52
3/11/2024	#4 Nevada	W	65-54

Semifinals (4-8)			
3/10/2000	#2 BYU	L	69-77
3/9/2001	#3 New Mexico	W	70-65
3/8/2002	#4 UNLV	L	58-72
3/14/2003	#2 New Mexico	L	51-65
3/14/2008	#4 New Mexico	L	41-65
3/14/2014	#5 Wyoming	W	95-92(3ot)
3/9/2016	#5 New Mexico	W	60-42
3/8/2017	#4 Boise State	L	61-65
3/7/2018	#1 Boise State	L	51-76
3/8/2022	#2 New Mexico	W	82-71
3/7/2023	#2 Wyoming	L	56-65
3/12/2024	#1 UNLV	L	52-62

Championship (2-2)			
3/10/2001	#4 BYU	W	59-56
3/15/2014	#2 Fresno State	L	68-77
3/11/2016	#2 Fresno State	W	55-54
3/9/2022	#1 UNLV	L	65-75

Full championship history beginning on pg. 67 of Media Guide



RECORD WHEN...

Overall	22-9
In MW Games	13-5
At Home	12-5
Away	8-2
Neutral	2-2
Leading After 1Q	19-2
Trailing After 1Q	3-7
Tied After 1Q	0-0
Leading at Half	17-2
Trailing at Half	5-7
Tied at Half	0-0
Leading After 3Q	20-1
Trailing After 3Q	2-8
Tied After 3Q	0-0
In Overtime	1-0
Game Decided by 20+ Points	6-0
Game Decided by 10-19 Points	5-3
Game Decided by 6-9 Points	7-2
Game Decided by 1-5 Points	4-4
Scoring 80+ Points	4-1
Scoring 70-79 Points	6-2
Scoring 60-69 Points	10-4
Scoring 50-59 Points	2-2
Scoring <50 Points	0-0
Allowing 80+ Points	0-2
Allowing 70-79 Points	4-3
Allowing 60-69 Points	2-4
Allowing 50-59 Points	10-0
Allowing <50 Points	6-0
Shooting 50% or Better	3-1
Shooting 40-49.9%	10-4
Shooting 30-39.9%	6-3
Shooting 20-29.9%	1-0
Shooting Less Than 20%	0-0
Opponent Shoots 50% or Better	0-1
Opponent Shoots 40-49.9%	8-6
Opponent Shoots 30-39.9%	8-2
Opponent Shoots 20-29.9%	5-0
Opponent Shoots Less Than 20%	1-0
Outrebounding Opponent	10-1
Opponent Outrebounds	12-8
Tied in Rebounds	0-0
More Turnovers than Opponent	1-3
Fewer Turnovers than Opponent	20-6
Tied Turnovers	1-0
CSU has 10+ Steals	4-0
CSU Shoots 70% FT	16-7
Bench Outscores Opponent Bench	11-6
Opponents Bench Outscores	9-2
Tied Bench Points	2-1
One Player in Double Figures	0-0
Two Players in Double Figures	8-3
Three Players in Double Figures	6-4
Four Players in Double Figures	6-2
Five+ Players in Double Figures	2-0
No Players in Double Figures	0-0
On Monday	3-0
On Tuesday	4-0
On Wednesday	5-2
On Thursday	0-0
On Friday	3-0
On Saturday	5-7
On Sunday	2-0

THE LAST TIME...

TEAM

Beat a Top-25 Team:

3/12/08 vs. No. 12 Utah (60-52)

Beat a Top-25 Team Away From Home:

3/12/08 vs. No. 12 Utah (60-52) - Las Vegas, Nev.

Beat Back-to-Back Top-25 Teams

11/21/01 No. 15 Notre Dame (72-66)

11/28/01 No. 11 Colorado (81-69)

Beat a Top-15 Team:

3/12/08 vs. No. 12 Utah (60-52)

Beat Back-to-Back Top-15 Teams:

11/21/01 No. 15 Notre Dame (72-66)

11/28/01 No. 11 Colorado (81-69)

Beat a Top-10 Team:

11/20/98 No. 10 Rutgers (71-60)

Scored 100+ Points:

11/25/20 Regis (111)

Allowed 100+ Points:

11/14/16 at No. 17/15 Washington (101)

Scored Fewer Than 50 Points:

1/31/24 at Air Force (49)

Allowed Fewer Than 50 Points:

2/26/25 Nevada (46)

Allowed Fewer Than 40 Points:

11/25/24 Black Hills State (39)

Had 25+ Assists:

1/4/25 San Jose State (25)

Had 30+ Assists:

2/1/14 San Diego State (31)

Had 10+ Steals:

1/25/25 at Wyoming (12)

Had 10+ Blocks:

11/15/21 Oral Roberts (11)

Made 10+ 3-Pointers:

1/4/25 San Jose State (12)

Made 15+ 3-Pointers:

11/21/21 vs. Lipscomb (16)

Had 30+ Free-Throw Attempts:

1/18/25 New Mexico (32)

Had 25+ Free-Throw Makes:

1/18/25 New Mexico (27)

Had Less Than 10 Fouls:

2/4/25 at New Mexico (8)

Had Less Than 5 Turnovers:

1/25/25 at Wyoming (3)

Shot 60+ Percent:

12/29/18 Chadron State (62.3%, 33-53)

Opponent Shot 60+ Percent:

N/A

Shot Less Than 30 Percent:

11/4/24 San Francisco (29.3%)

Opponent Shot Less Than 30 Percent:

2/19/25 Fresno State (29.8%)

Five Rams in Double-Figures:

1/21/25 v. Boise State

(Simental 18, H. Ronsiek 15, E. Ronsiek 12)

Fife 12, Carson 12)

Six Rams in Double-Figures:

3/4/25 at San Jose State

(Froebe 18, Simental 17, Carlson 15, Leimane 14, H. Ronsiek 12, E. Ronsiek 10)

Two Players with 20+ Points:

1/18/25 New Mexico

(E. Ronsiek 29, Simental 24)

Two Players with a Double-Double:

12/10/20 vs. San Diego State

(Lore Davis 23p, 12r; Tori Williams 10p, 10r)

Three Players with a Double-Double:

1/15/14 vs. Utah State

(Sam Martin 17p, 10r; Elin Gustavsson 16p, 11r; Gritt Ryder 10p, 14a)

PLAYER

Player Scored 40+ Points:

11/13/07, Sara Hunter vs. San Francisco, 3OT (41)

Player Scored 30+ Points:

2/24/24, McKenna Hofschild at Utah State (31)

Player Made 5+ 3-Pointers:

1/18/25, Hannah Simental vs. New Mexico (5)

Player Made 7+ 3-Pointers:

11/15/22, Meghan Boyd vs. Western Colo. (7)

Player Made 15+ Free Throws:

12/31/22, McKenna Hofschild at UNLV (16)

Player Had 10+ Assists:

2/17/24, McKenna Hofschild vs. Wyoming (13)

Player Had 15+ Assists:

1/19/22, McKenna Hofschild at Utah State (17)⁵

Three Players with 10+ Rebounds:

11/13/07 v. San Francisco

(Queen, 11; Cornell, 11; Reimink, 10)

Player Had 15+ Rebounds:

1/15/25, Kloe Froebe at San Diego State (18)

Player Had 20+ Rebounds:

1/11/20, Andrea Brady vs. San Jose State (23)⁵

Player Had 5+ Blocked Shots:

11/29/22, Sydney Mech at Northern Colo. (5)

Player Had 10+ Blocked Shots:

12/12/92, Teresa James vs. Baylor (10)⁵

Player Had 5+ Steals:

2/4/25, Hannah Simental at New Mexico (5)

Player Had 10+ Steals:

2/10/90, Cynthia Salery at BYU (10)⁵

Player Had a Double-Double with Assists:

2/7/24, McKenna Hofschild vs. Fresno State (16p,

11a)

Player Had a Triple-Double:

1/18/47, Ellen Nystrom vs. San Jose State (11p,

14r, 10a)

⁵ program record

22

Colorado State's 22 victories this season are the most since the 2016-17 season (25). Under Ryun Williams, CSU has nine 20-win seasons and are in the midst of four-straight.

.800

The Rams have been Stalwart away from home, winning 80% of its true road games (8-2). It's the best road winning percentage for CSU since going 12-1 (.923) in 2015-16.

144

Ryun Williams leads all active Mountain West coaches with 144 wins in league play. The all-time record of 159 belongs to Joe Legerski, who coached Wyoming from 2003-19.



GAME-BY-GAME STARTERS

Opponent (W/L)	1	2	3	4	5
San Francisco (W)	Simental	Froebe	H. Ronsiek	Leimane	E. Ronsiek
Oregon State (W)	Simental	Leimane	H. Ronsiek	Ström	E. Ronsiek
at BYU (L)	Simental	Froebe	H. Ronsiek	Leimane	E. Ronsiek
Columbia College (W)	Froebe	Leimane	H. Ronsiek	Ström	E. Ronsiek
Southern (W)	Froebe	Leimane	H. Ronsiek	Ström	E. Ronsiek
Northern Arizona (L)	Froebe	Leimane	H. Ronsiek	Ström	E. Ronsiek
Black Hills State (W)	Froebe	Leimane	H. Ronsiek	Ström	E. Ronsiek
vs. Kent State (W)	Froebe	Leimane	H. Ronsiek	Ström	E. Ronsiek
vs. Brown (L)	Simental	Froebe	H. Ronsiek	Ström	E. Ronsiek
Gonzaga (W)	Froebe	Leimane	H. Ronsiek	Ström	E. Ronsiek
UTEP (W)	Froebe	Leimane	H. Ronsiek	Ström	E. Ronsiek
vs. Georgia (W)	Froebe	Leimane	H. Ronsiek	Ström	E. Ronsiek
vs. Stephen F. Austin (L)	Froebe	Leimane	H. Ronsiek	Ström	E. Ronsiek
at Utah State (W)	Froebe	Carlson	H. Ronsiek	Vaz	E. Ronsiek
San Diego State (W)	Carlson	Leimane	H. Ronsiek	Vaz	E. Ronsiek
San Jose State (W)	Carlson	Leimane	H. Ronsiek	Vaz	E. Ronsiek
at UNLV (L)	Carlson	Leimane	H. Ronsiek	Vaz	E. Ronsiek
at San Diego State (W)	Carlson	Froebe	Leimane	H. Ronsiek	E. Ronsiek
New Mexico (L)	Froebe	Headrick	Leimane	H. Ronsiek	E. Ronsiek
Boise State (W)	Carlson	Simental	Froebe	H. Ronsiek	E. Ronsiek
at Wyoming (W)	Carlson	Simental	Froebe	H. Ronsiek	E. Ronsiek
Air Force (L)	Carlson	Simental	Froebe	H. Ronsiek	E. Ronsiek
at New Mexico (W)	Simental	Leimane	H. Ronsiek	Headrick	E. Ronsiek
at Boise State (W)	Simental	Leimane	H. Ronsiek	Headrick	E. Ronsiek
Utah State (W)	Carlson	Simental	H. Ronsiek	Headrick	E. Ronsiek
at Air Force (W)	Carlson	Simental	Leimane	H. Ronsiek	E. Ronsiek
Fresno State (W)	Carlson	Simental	Leimane	H. Ronsiek	E. Ronsiek
UNLV (L)	Carlson	Simental	Leimane	H. Ronsiek	E. Ronsiek
at Nevada (W)	Carlson	Simental	Leimane	H. Ronsiek	E. Ronsiek
Wyoming (L)	Simental	Leimane	H. Ronsiek	Vaz	E. Ronsiek
at San Jose State (W)	Carlson	Simental	Leimane	H. Ronsiek	E. Ronsiek

GAME-BY-GAME LEADERS

Opponent	PTS	REB	AST	STL	BLK
San Francisco	E. Ronsiek	H. Ronsiek	Leimane	2 Players	Leimane
Oregon State	E. Ronsiek	Leimane	E. Ronsiek	H. Ronsiek	H. Ronsiek
BYU	Froebe	E. Ronsiek	E. Ronsiek	5 Players	Vaz
Columbia College	2 Players	2 Players	2 Players	2 Players	Headrick
Southern	E. Ronsiek	E. Ronsiek	Leimane	2 Players	4 Players
Northern Arizona	E. Ronsiek	Ström	Ström	3 Players	2 Players
Black Hills State	Simental	Ström	E. Ronsiek	H. Ronsiek	E. Ronsiek
Kent State	E. Ronsiek	2 Players	Froebe	2 Players	H. Ronsiek
Brown	2 Players	E. Ronsiek	4 Players	Leimane	None
Gonzaga	E. Ronsiek	H. Ronsiek	Carlson	2 Players	E. Ronsiek
UTEP	Froebe	Froebe	E. Ronsiek	2 Players	Simental
Georgia	E. Ronsiek	E. Ronsiek	Carlson	E. Ronsiek	3 Players
Stephen F. Austin	E. Ronsiek	H. Ronsiek	2 Players	H. Ronsiek	H. Ronsiek
Utah State	E. Ronsiek	E. Ronsiek	E. Ronsiek	H. Ronsiek	2 Players
San Diego State	E. Ronsiek	H. Ronsiek	Carlson	H. Ronsiek	Leimane
San Jose State	E. Ronsiek	Vaz	Carlson	2 Players	H. Ronsiek
UNLV	E. Ronsiek	H. Ronsiek	2 Players	Carlson	2 Players
San Diego State	Froebe	Froebe	2 Players	Carlson	2 Players
New Mexico	E. Ronsiek	E. Ronsiek	3 Players	2 Players	3 Players
Boise State	Simental	H. Ronsiek	E. Ronsiek	2 Players	Fife
Wyoming	E. Ronsiek	2 Players	Carlson	H. Ronsiek	3 Players
Air Force	E. Ronsiek	H. Ronsiek	Carlson	2 Players	H. Ronsiek
New Mexico	H. Ronsiek	E. Ronsiek	2 Players	Simental	Leimane
Boise State	E. Ronsiek	H. Ronsiek	4 Players	Simental	H. Ronsiek
Utah State	Froebe	Froebe	Leimane	2 Players	Leimane
Air Force	E. Ronsiek	H. Ronsiek	Carlson	2 Players	2 Players
Fresno State	E. Ronsiek	E. Ronsiek	E. Ronsiek	2 Players	3 Players
UNLV	Simental	Froebe	Leimane	2 Players	Vaz
Nevada	Froebe	2 Players	Leimane	3 Players	2 Players
Wyoming	E. Ronsiek	H. Ronsiek	2 Players	3 Players	H. Ronsiek
San Jose State	Froebe	Froebe	Froebe	Simental	2 Players

MISCELLANEOUS STATS

Double-Doubles	Season	Career
Emma Ronsiek	3	9
Kloe Froebe	3	3
Hannah Ronsiek	1	2
Marta Leimane	0	1
Joseana Vaz	0	1

30+ Point Games	Season	Career
Emma Ronsiek	0	2

20+ Point Games	Season	Career
Emma Ronsiek	13	41
Hannah Simental	1	14
Marta Leimane	0	4

10+ Rebound Games	Season	Career
Emma Ronsiek	3	11
Kloe Froebe	3	3
Hannah Ronsiek	1	2
Joseana Vaz	1	2
Marta Leimane	0	1

5+ Steal Games	Season	Career
Hannah Simental	1	2

5+ Block Games	Season	Career
Emma Ronsiek	0	1

GAMES LED RAMS IN...

Scoring	Season	Career
Emma Ronsiek	21	21
Kloe Froebe	7	7
Hannah Simental	3	3
Marta Leimane	1	4
Hannah Ronsiek	1	3

Rebounding	Season	Career
Hannah Ronsiek	11	24
Emma Ronsiek	11	11
Kloe Froebe	7	7
Sanna Ström	2	7
Marta Leimane	1	4
Joseana Vaz	1	3
Kaylee Headrick	1	1
Jadyn Fife	1	1

Assists	Season	Career
Brooke Carlson	11	11
Emma Ronsiek	10	10
Marta Leimane	9	9
Hannah Simental	4	4
Kloe Froebe	4	4
Hannah Ronsiek	3	5
Sanna Ström	2	2
Kaylee Headrick	1	1

Steals	Season	Career
Hannah Ronsiek	14	14
Brooke Carlson	14	14
Hannah Simental	12	12
Marta Leimane	5	5
Emma Ronsiek	5	5
Sanna Ström	2	2
Kloe Froebe	2	2
Vaz	1	1

Blocks	Season	Career
Hannah Ronsiek	14	14
Marta Leimane	10	10
Emma Ronsiek	6	6
Brooke Carlson	5	5
Jadyn Fife	3	3
Joseana Vaz	3	3
Sanna Ström	2	2
Kaylee Headrick	2	2
Hannah Simental	1	1

(Includes games where lead was shared)



PROGRAM RECORD WATCH

Career Ind. Defensive Rebounds

1. Ellen Nystrom (2012-17)	775
2. Sam Martin (2010-14)	510
3. Elin Gustavsson (2012-17)	479
4. Lindsay Thomas (2002-06)	467
5. Meghan Heimstra (2008-13)	461
6. Kim Mestdagh (2008-12)	449
7. Hannah Ronsiek (2022-Pres.)	430
8. Melissa Dennett (2002-06)	423
9. Cali Clark (2020-24)	377
10. Juanise Cornell (2006-09)	369

Season Ind. Scoring

1. Becky Hammon (1998-99)	824
2. Becky Hammon (1997-98)	704
3. McKenna Hofschild (2023-24)	684
4. McKenna Hofschild (2022-23)	640
5. Becky Hammon (1996-97)	618
6. Becky Hammon (1995-96)	594
7. Kathy Lightfoot (1981-82)	586
8. Teresa James (1993-94)	581
9. McKenna Hofschild (2021-22)	557
10. Emma Ronsiek (2024-25)	550

Season Ind. Field Goals Made

1. Becky Hammon (1998-99)	261
2. Kathy Lightfoot (1981-82)	254
3. McKenna Hofschild (2023-24)	244
4. Becky Hammon (1997-98)	238
5. McKenna Hofschild (2022-23)	221
6. Becky Hammon (1996-97)	219
7. Teresa James (1993-94)	219
8. Dametra Johnson (1989-90)	216
9. Jodi Roberts (1988-99)	211
10. Becky Hammon (1995-96)	200
NR Emma Ronsiek (2024-25)	189

Season Ind. Free Throws Made

1. Becky Hammon (1998-99)	188
2. McKenna Hofschild (2022-23)	156
3. Becky Hammon (1997-98)	148
4. Teresa James (1993-94)	137
5. McKenna Hofschild (2023-24)	137
6. McKenna Hofschild (2021-22)	132
7. Karen Hosek (1983-84)	125
8. Ellen Nystrom (2016-17)	124
9. Angie Gorton (2001-02)	120
10. Upe Atosu (2021-22)	114
NR Emma Ronsiek (2024-25)	103

Season Ind. Rebounds

1. Karly Murphy (2021-22)	282
2. Teresa James (1993-94)	278
3. Janie Schieffelin (1979-80)	273
4. Jane Lange (1982-83)	272
5. Ellen Nystrom (2016-17)	266
6. Janie Schieffelin (1978-79)	264
7. Katie Cronin (1998-99)	259
8. Jennifer Halbach (1986-87)	252
9. Melissa Dennett (2005-06)	251
10. Teresa James (1995-96)	249
NR Hannah Ronsiek (2024-25)	186
NR Emma Ronsiek (2024-25)	184

Season Ind. Defensive Rebounds

1. Ellen Nystrom (2016-17)	237
2. Karly Murphy (2021-22)	212
3. Kendyll Kinzer (2021-22)	205
4. Ellen Nystrom (2014-15)	187
5. Hannah Ronsiek (2024-25)	180
6. Ellen Nystrom (2015-16)	178
7. Elin Gustavsson (2016-17)	174
8. Hannah Tvrdy (2017-18)	173
9. Ellen Nystrom (2013-14)	173
10. Hannah Ronsiek (2023-24)	169
NR Emma Ronsiek (2024-25)	156

Season Team 3-Pointers Made

1. 1998-99	289
2. 2022-23	259
3. 2023-24	258
4. 2016-17	255
5. 2021-22	251
6. 2024-25	246
7. 2013-14	245
8. 1999-00	239
9. 2000-01	233
10. 1997-98	223
11. 2019-20	223

Season Team Scoring Defense

1. 1974-75	49.06 (834/17)
2. 2015-16	51.18 (1,689/33)
3. 2016-17	53.65 (1,824/34)
4. 2014-15	56.94 (1,765/31)
4. 2017-18	57.61 (1,901/33)
5. 1975-76	59.35 (1,009/17)
6. 2012-13	59.46 (1,784/30)
7. 2019-20	59.70 (1,791/30)
8. 2011-12	60.10 (1,803/30)
9. 2001-02	60.32 (1,870/31)
10. 2003-04	60.48 (1,754/29)
NR. 2025-24	60.65 (1,880/31)

Season Team FG% Defense

1. 1974-75	.303 (344-1,136)
2. 1975-76	.324 (409-1,263)
3. 2015-16	.330 (597-1,807)
4. 2016-17	.339 (660-947)
5. 2017-18	.351 (673-1,919)
6. 2012-13	.363 (659-1,817)
7. 2018-19	.367 (658-1,791)
8. 1996-97	.370 (673-1,820)
9. 2023-24	.371 (702-1,894)
10. 2024-25	.372 (678-1,824)
11. 2013-14	.375 (746-1,990)

Season Team FT%

1. 2022-23	.791 (353-446)
2. 2023-24	.785 (281-358)
3. 2024-25	.783 (383-489)
4. 2021-22	.773 (358-463)
5. 2005-06	.765 (371-488)
6. 2020-21	.763 (212-278)
7. 1988-89	.760 (399-535)
8. 2018-19	.760 (273-359)
9. 2013-14	.755 (452-599)
10. 2000-01	.749 (509-680)
11. 2012-13	.748 (342-457)

Season Team 3FG% Defense

1. 2015-16	.257 (141-549)
2. 1996-97	.261 (108-414)
3. 2017-18	.273 (194-711)
4. 2016-17	.277 (220-794)
5. 1997-98	.284 (154-543)
6. 2004-05	.300 (160-533)
7. 1998-99	.300 (150-500)
8. 2013-14	.302 (196-649)
9. 1995-96	.302 (141-467)
10. 2023-24	.303 (210-692)
NR. 2024-25	.304 (221-728)



2024-25 COLORADO STATE SEASON STATS

Game Records

Record	Overall	Home	Away	Neutral
ALL GAMES	22-9	12-5	8-2	2-2
CONFERENCE	13-5	5-4	8-1	0-0
NON-CONFERENCE	9-4	7-1	0-1	2-2

Score by Periods

Team	1st	2nd	3rd	4th	OT	TOT
Colorado St.	534	484	554	559	8	2139
Opponents	465	432	462	515	6	1880

Team Box Score

No.	Player	Total					3-Point		F-Throw		Rebounds													
		GP-GS	MIN	AVG	FG-FGA	FG%	3FG-3FGA	3FG%	FT-FTA	FT%	OFF	DEF	TOT	AVG	PF	DQ	A	TO	BLK	STL	PTS	AVG		
21	RONSIEK, Emma	31-31	1148:28	37.0	189-449	.421	69-193	.358	103-127	.811	28	156	184	5.9	39	0	83	44	10	26	550	17.7		
32	SIMENTAL, Hannah	31-16	886:03	28.6	102-237	.430	56-141	.397	52-59	.881	1	61	62	2.0	44	1	44	34	2	42	312	10.1		
30	RONSIEK, Hannah	31-31	1019:50	32.9	101-227	.445	50-121	.413	34-40	.850	6	180	186	6.0	85	5	50	29	27	44	286	9.2		
1	FROEBE, Kloe	31-18	604:49	19.5	101-200	.505	5-31	.161	60-79	.759	57	76	133	4.3	36	0	43	23	1	16	267	8.6		
2	CARLSON, Brooke	31-14	625:54	20.2	74-191	.387	16-57	.281	72-96	.750	9	38	47	1.5	53	0	79	40	8	40	236	7.6		
20	STROM, Sanna	13-11	344:27	26.5	30-71	.423	16-48	.333	10-14	.714	3	54	57	4.4	33	0	27	5	4	6	86	6.6		
14	LEIMANE, Marta	31-25	753:46	24.3	82-200	.410	11-41	.268	26-35	.743	5	87	92	3.0	65	1	71	46	23	18	201	6.5		
5	FIFE, Jady	31-0	348:01	11.2	37-94	.394	14-42	.333	8-8	1.000	4	54	58	1.9	22	0	12	13	5	9	96	3.1		
0	HEADRICK, Kaylee	27-4	219:23	8.1	20-48	.417	8-19	.421	7-8	.875	11	28	39	1.4	10	0	16	6	4	2	55	2.0		
10	VAZ, Joseana	23-5	215:05	9.4	16-37	.432	0-2	.000	11-23	.478	31	27	58	2.5	28	0	12	13	7	8	43	1.9		
12	ZACHARIAH, Ann	12-0	50:15	4.2	3-11	.273	1-1	1.000	0-0	.000	1	4	5	0.4	4	0	3	4	0	3	7	0.6		
Team											39	79	118					17						
Total		31	6216		755-1765	.428	246-696	.353	383-489	.783	195	844	1039	33.5	419	7	440	274	91	214	2139	69.0		
Opponents		31	6225		678-1824	.372	221-728	.304	303-415	.730	320	855	1175	37.9	494	9	387	400	80	130	1880	60.6		

Team Statistics

	CSU	OPP
Scoring	2139	1880
Points per game	69.0	60.6
Scoring margin	+8.4	-
Field goals-att	755-1765	678-1824
Field goal pct	.428	.372
3 point fg-att	246-696	221-728
3-point FG pct	.353	.304
3-pt FG made per game	7.9	7.1
Free throws-att	383-489	303-415
Free throw pct	.783	.730
F-Throws made per game	12.4	9.8
Rebounds	1039	1175
Rebounds per game	33.5	37.9
Rebounding margin	-4.4	-
Assists	440	387
Assists per game	14.2	12.5
Turnovers	274	400
Turnovers per game	8.8	12.9
Turnover margin	+4.1	-
Assist/turnover ratio	1.6	1.0
Steals	214	130
Steals per game	6.9	4.2
Blocks	91	80
Blocks per game	2.9	2.6
Winning streak	1	-
Home win streak	0	-
Attendance	35029	19940
Home games-Avg/Game	17-2061	10-1994
Neutral site-Avg/Game	-	4-454

Team Results

Date	Opponent		Score	Att.
11/04/2024	San Francisco	W	52-47	1182
11/08/2024	Oregon St.	W	65-59	1108
11/13/2024	at BYU	L	55-69	5154
11/16/2024	Columbia (MO)	W	85-28	1288
11/19/2024	Southern U.	W	78-47	1084
11/23/2024	Northern Ariz.	L	80-84	1354
11/25/2024	Black Hills St.	W	59-39	1199
11/29/2024	vs Kent St.	W	60-54	100
11/30/2024	vs Brown	L	63-69	100
12/08/2024	Gonzaga	Wot	74-72	5500
12/16/2024	UTEP	W	70-52	1343
12/20/2024	vs Georgia	W	72-56	205
12/21/2024	vs SFA	L	69-80	1410
12/29/2024	at Utah St.	W	83-74	444
01/01/2025	San Diego St.	W	67-56	1480
01/04/2025	San Jose St.	W	87-51	1538
01/08/2025	at UNLV	L	61-70	875
01/15/2025	at San Diego St.	W	62-58	1353
01/18/2025	New Mexico	L	74-78	2338
01/21/2025	Boise St.	W	79-70	1156
01/25/2025	at Wyoming	W	61-56	2692
02/01/2025	Air Force	L	71-75	1868
02/04/2025	at New Mexico	W	69-63	4414
02/08/2025	at Boise St.	W	67-61	1730
02/12/2025	Utah St.	W	72-54	6008
02/15/2025	at Air Force	W	65-58	1070
02/19/2025	Fresno St.	W	68-48	1412
02/22/2025	UNLV	L	65-69	2559
02/26/2025	at Nevada	W	61-45	1596
03/01/2025	Wyoming	L	55-68	2612
03/04/2025	at San Jose St.	W	90-70	612



2024-25 COLORADO STATE SEASON STATS - MOUNTAIN WEST PLAY

Game Records

Record	Overall	Home	Away	Neutral
ALL GAMES	13-5	5-4	8-1	0-0
CONFERENCE	13-5	5-4	8-1	0-0
NON-CONFERENCE	0-0	0-0	0-0	0-0

Score by Periods

Team	1st	2nd	3rd	4th	OT	TOT
Colorado St.	333	286	320	318	0	1257
Opponents	296	229	290	309	0	1124

Team Box Score

No.	Player				Total		3-Point		F-Throw		Rebounds											
		GP-GS	MIN	AVG	FG-FGA	FG%	3FG-3FGA	3FG%	FT-FTA	FT%	OFF	DEF	TOT	AVG	PF	DQ	A	TO	BLK	STL	PTS	AVG
21	RONSIK, Emma	18-18	682:19	37.9	109-268	.407	39-109	.358	66-78	.846	16	96	112	6.2	22	0	39	23	6	12	323	17.9
32	SIMENTAL, Hannah	18-12	561:47	31.2	66-147	.449	35-84	.417	44-50	.880	0	38	38	2.1	32	1	25	19	1	27	211	11.7
1	FROEBE, Kloe	18-6	364:33	20.3	67-126	.532	1-13	.077	38-55	.691	44	48	92	5.1	22	0	22	14	1	11	173	9.6
30	RONSIK, Hannah	18-18	623:27	34.6	58-128	.453	30-66	.455	22-25	.880	3	113	116	6.4	53	3	32	19	19	26	168	9.3
2	CARLSON, Brooke	18-14	438:24	24.4	49-128	.383	11-34	.324	47-60	.783	8	27	35	1.9	43	0	54	27	8	26	156	8.7
14	LEIMANE, Marta	18-13	466:56	25.9	52-110	.473	7-26	.269	13-17	.765	2	51	53	2.9	39	0	44	23	15	11	124	6.9
5	FIFE, Jady	18-0	216:47	12.0	24-57	.421	9-28	.321	4-4	1.000	2	30	32	1.8	14	0	9	9	5	6	61	3.4
0	HEADRICK, Kaylee	17-4	120:21	7.1	10-22	.455	4-10	.400	6-6	1.000	6	15	21	1.2	7	0	5	5	3	2	30	1.8
10	VAZ, Joseana	11-5	92:27	8.4	5-19	.263	0-1	.000	1-4	.250	10	14	24	2.2	11	0	5	5	5	5	11	1.0
12	ZACHARIAH, Ann	7-0	24:02	3.4	0-3	.000	0-0	.000	0-0	.000	0	3	3	0.4	1	0	2	3	0	1	0	0.0
Team											24	49	73					12				
Total		18	3591		440-1008	.437	136-371	.367	241-299	.806	115	484	599	33.3	244	4	237	159	63	127	1257	69.8
Opponents		18	3600		406-1044	.389	134-407	.329	178-243	.733	178	479	657	36.5	293	7	231	219	49	78	1124	62.4

Team Statistics

	CSU	OPP
Scoring	1257	1124
Points per game	69.8	62.4
Scoring margin	+7.4	-
Field goals-att	440-1008	406-1044
Field goal pct	.437	.389
3 point fg-att	136-371	134-407
3-point FG pct	.367	.329
3-pt FG made per game	7.6	7.4
Free throws-att	241-299	178-243
Free throw pct	.806	.733
F-Throws made per game	13.4	9.9
Rebounds	599	657
Rebounds per game	33.3	36.5
Rebounding margin	-3.2	-
Assists	237	231
Assists per game	13.2	12.8
Turnovers	159	219
Turnovers per game	8.8	12.2
Turnover margin	+3.3	-
Assist/turnover ratio	1.5	1.1
Steals	127	78
Steals per game	7.1	4.3
Blocks	63	49
Blocks per game	3.5	2.7
Winning streak	1	-
Home win streak	0	-
Attendance	20971	14786
Home games-Avg/Game	9-2330	9-1643
Neutral site-Avg/Game	-	0-0

Team Results

Date	Opponent		Score	Att.
12/29/2024	at Utah St.	W	83-74	444
01/01/2025	San Diego St.	W	67-56	1480
01/04/2025	San Jose St.	W	87-51	1538
01/08/2025	at UNLV	L	61-70	875
01/15/2025	at San Diego St.	W	62-58	1353
01/18/2025	New Mexico	L	74-78	2338
01/21/2025	Boise St.	W	79-70	1156
01/25/2025	at Wyoming	W	61-56	2692
02/01/2025	Air Force	L	71-75	1868
02/04/2025	at New Mexico	W	69-63	4414
02/08/2025	at Boise St.	W	67-61	1730
02/12/2025	Utah St.	W	72-54	6008
02/15/2025	at Air Force	W	65-58	1070
02/19/2025	Fresno St.	W	68-48	1412
02/22/2025	UNLV	L	65-69	2559
02/26/2025	at Nevada	W	61-45	1596
03/01/2025	Wyoming	L	55-68	2612
03/04/2025	at San Jose St.	W	90-70	612



2024-25 COLORADO STATE GAME-BY-GAME STATS

				Total		3-Pointers		Free throws		Rebounds											
Opponent	Date	Score		FG-FGA	PCT	3FG-3FGA	PCT	FT-FTA	PCT	OFF	DEF	TOT	AVG	PF	A	TO	BLK	STL	PTS	AVG	
San Francisco	11/04/2024	52-47	W	17-58	.293	8-27	.296	10-14	.714	6	29	35	35.0	13	13	9	3	5	52	52.0	
Oregon St.	11/08/2024	65-59	W	25-60	.417	12-31	.387	3-4	.750	0	26	26	30.5	7	19	2	1	6	65	58.5	
at BYU	11/13/2024	55-69	L	20-58	.345	4-20	.200	11-15	.733	6	30	36	32.3	14	6	10	1	5	55	57.3	
Columbia (MO)	11/16/2024	85-28	W	33-64	.516	6-15	.400	13-20	.650	15	34	49	36.5	15	19	8	1	11	85	64.3	
Southern U.	11/19/2024	78-47	W	28-54	.519	9-28	.321	13-15	.867	6	31	37	36.6	12	20	10	4	9	78	67.0	
Northern Ariz.	11/23/2024	80-84	L	29-65	.446	10-27	.370	12-15	.800	6	31	37	36.7	16	22	9	7	3	80	69.2	
Black Hills St.	11/25/2024	59-39	W	22-53	.415	5-17	.294	10-16	.625	7	28	35	36.4	10	11	11	1	9	59	67.7	
vs Kent St.	11/29/2024	60-54	W	20-56	.357	7-25	.280	13-17	.765	8	29	37	36.5	20	12	13	4	5	60	66.8	
vs Brown	11/30/2024	63-69	L	19-46	.413	7-22	.318	18-21	.857	2	23	25	35.2	18	10	13	0	7	63	66.3	
Gonzaga	12/08/2024	74-72	Wot	25-64	.391	10-29	.345	14-20	.700	5	25	30	34.7	17	19	3	1	8	74	67.1	
UTEP	12/16/2024	70-52	W	23-56	.411	11-29	.379	13-19	.684	7	34	41	35.3	9	20	9	1	7	70	67.4	
vs Georgia	12/20/2024	72-56	W	27-57	.474	8-22	.364	10-11	.909	5	20	25	34.4	10	12	8	3	6	72	67.8	
vs SFA	12/21/2024	69-80	L	27-66	.409	13-33	.394	2-3	.667	7	20	27	33.8	14	20	10	1	6	69	67.8	
at Utah St.	12/29/2024	83-74	W	29-61	.475	13-25	.520	12-16	.750	12	28	40	34.3	12	17	15	2	10	83	68.9	
San Diego St.	01/01/2025	67-56	W	25-54	.463	8-15	.533	9-11	.818	7	30	37	34.5	13	14	11	3	1	67	68.8	
San Jose St.	01/04/2025	87-51	W	30-62	.484	12-24	.500	15-18	.833	9	30	39	34.8	9	25	9	5	11	87	69.9	
at UNLV	01/08/2025	61-70	L	25-48	.521	4-11	.364	7-11	.636	6	31	37	34.9	13	10	18	2	3	61	69.4	
at San Diego St.	01/15/2025	62-58	W	21-57	.368	5-22	.227	15-21	.714	6	31	37	35.0	14	5	8	4	5	62	69.0	
New Mexico	01/18/2025	74-78	L	20-60	.333	7-28	.250	27-32	.844	7	34	41	35.3	18	12	8	3	7	74	69.3	
Boise St.	01/21/2025	79-70	W	25-50	.500	9-19	.474	20-22	.909	3	22	25	34.8	14	18	7	1	10	79	69.8	
at Wyoming	01/25/2025	61-56	W	22-56	.393	6-21	.286	11-14	.786	6	26	32	34.7	12	11	3	3	12	61	69.3	
Air Force	02/01/2025	71-75	L	24-52	.462	7-20	.350	16-17	.941	3	21	24	34.2	16	15	7	5	5	71	69.4	
at New Mexico	02/04/2025	69-63	W	26-54	.481	6-17	.353	11-19	.579	4	26	30	34.0	8	15	9	7	8	69	69.4	
at Boise St.	02/08/2025	67-61	W	19-48	.396	6-20	.300	23-26	.885	2	23	25	33.6	20	10	11	4	8	67	69.3	
Utah St.	02/12/2025	72-54	W	29-59	.492	8-21	.381	6-8	.750	9	33	42	34.0	13	15	12	3	7	72	69.4	
at Air Force	02/15/2025	65-58	W	23-58	.397	9-20	.450	10-15	.667	6	28	34	34.0	13	17	7	7	4	65	69.2	
Fresno St.	02/19/2025	68-48	W	24-56	.429	8-27	.296	12-14	.857	8	32	40	34.2	10	16	7	3	6	68	69.2	
UNLV	02/22/2025	65-69	L	22-56	.393	8-23	.348	13-15	.867	6	20	26	33.9	17	9	6	6	7	65	69.0	
at Nevada	02/26/2025	61-45	W	24-52	.462	6-18	.333	7-10	.700	5	23	28	33.7	12	6	7	2	7	61	68.8	
Wyoming	03/01/2025	55-68	L	19-55	.345	7-21	.333	10-12	.833	4	20	24	33.4	19	10	7	1	9	55	68.3	
at San Jose St.	03/04/2025	90-70	W	33-70	.471	7-19	.368	17-18	.944	12	26	38	33.5	11	12	7	2	7	90	69.0	
Total		2139		755-1765	.428	246-696	.353	383-489	.783	195	844	1039	33.5	419	440	274	91	214	2139	69.0	
Opponents		1880		678-1824	.372	221-728	.304	303-415	.730	320	855	1175	37.9	494	387	400	80	130	1880	60.6	

Colorado St. Averages

Games Played	Points/game	FG Pct	3FG Pct	FT Pct	Rebounds/game	Assists/game	Turnovers/game	Assist/Turnover ratio	Steals/game	Blocks/game
31	69.0	42.8	35.3	78.3	33.5	14.2	8.8	1.6	6.9	2.9



2024-25 OPPONENT GAME-BY-GAME STATS

				Total		3-Pointers		Free throws		Rebounds											
Opponent	Date	Score		FG-FGA	PCT	3FG-3FGA	PCT	FT-FTA	PCT	OFF	DEF	TOT	AVG	PF	A	TO	BLK	STL	PTS	AVG	
San Francisco	11/04/2024	52-47	W	16-59	.271	5-24	.208	10-15	.667	16	36	52	52.0	24	10	15	4	3	47	47.0	
Oregon St.	11/08/2024	65-59	W	24-60	.400	5-19	.263	6-7	.857	10	35	45	48.5	9	13	13	2	2	59	53.0	
at BYU	11/13/2024	55-69	L	25-61	.410	8-32	.250	11-15	.733	7	34	41	46.0	13	16	11	5	6	69	58.3	
Columbia (MO)	11/16/2024	85-28	W	10-52	.192	2-26	.077	6-9	.667	9	20	29	41.8	15	4	21	1	5	28	50.8	
Southern U.	11/19/2024	78-47	W	15-59	.254	7-26	.269	10-12	.833	15	21	36	40.6	16	10	16	0	4	47	50.0	
Northern Ariz.	11/23/2024	80-84	L	30-76	.395	11-31	.355	13-18	.722	17	32	49	42.0	13	16	8	4	4	84	55.7	
Black Hills St.	11/25/2024	59-39	W	13-57	.228	5-28	.179	8-9	.889	13	27	40	41.7	14	9	16	0	3	39	53.3	
vs Kent St.	11/29/2024	60-54	W	19-66	.288	8-27	.296	8-12	.667	10	26	36	41.0	17	11	13	1	4	54	53.4	
vs Brown	11/30/2024	63-69	L	26-60	.433	9-30	.300	8-13	.615	5	24	29	39.7	20	13	12	2	4	69	55.1	
Gonzaga	12/08/2024	74-72	Wot	25-61	.410	5-17	.294	17-22	.773	12	37	49	40.6	17	18	16	2	3	72	56.8	
UTEP	12/16/2024	70-52	W	19-57	.333	7-25	.280	7-12	.583	7	27	34	40.0	16	10	11	1	6	52	56.4	
vs Georgia	12/20/2024	72-56	W	22-56	.393	6-13	.462	6-8	.750	12	24	36	39.7	19	11	15	4	4	56	56.3	
vs SFA	12/21/2024	69-80	L	28-56	.500	9-23	.391	15-20	.750	9	33	42	39.8	8	15	14	5	4	80	58.2	
at Utah St.	12/29/2024	83-74	W	27-62	.435	12-31	.387	8-12	.667	10	22	32	39.3	19	13	17	4	8	74	59.3	
San Diego St.	01/01/2025	67-56	W	23-57	.404	4-18	.222	6-10	.600	6	22	28	38.5	17	12	7	1	5	56	59.1	
San Jose St.	01/04/2025	87-51	W	19-58	.328	7-23	.304	6-6	1.000	9	25	34	38.3	15	10	17	3	6	51	58.6	
at UNLV	01/08/2025	61-70	L	26-62	.419	8-26	.308	10-14	.714	7	19	26	37.5	12	14	5	5	8	70	59.2	
at San Diego St.	01/15/2025	62-58	W	21-60	.350	3-17	.176	13-17	.765	9	30	39	37.6	19	12	10	3	3	58	59.2	
New Mexico	01/18/2025	74-78	L	26-65	.400	10-27	.370	16-22	.727	8	35	43	37.9	24	12	11	2	3	78	60.2	
Boise St.	01/21/2025	79-70	W	28-59	.475	7-25	.280	7-11	.636	12	23	35	37.8	19	20	14	2	2	70	60.7	
at Wyoming	01/25/2025	61-56	W	23-67	.343	4-26	.154	6-10	.600	21	29	50	38.3	15	19	12	4	0	56	60.4	
Air Force	02/01/2025	71-75	L	24-51	.471	11-19	.579	16-22	.727	8	26	34	38.1	13	14	11	1	5	75	61.1	
at New Mexico	02/04/2025	69-63	W	25-60	.417	11-22	.500	2-6	.333	10	28	38	38.1	14	16	14	5	4	63	61.2	
at Boise St.	02/08/2025	67-61	W	21-61	.344	6-21	.286	13-18	.722	16	26	42	38.3	22	9	16	2	4	61	61.2	
Utah St.	02/12/2025	72-54	W	19-56	.339	8-31	.258	8-10	.800	6	22	28	37.9	14	9	13	0	5	54	60.9	
at Air Force	02/15/2025	65-58	W	20-59	.339	5-20	.250	13-20	.650	12	32	44	38.1	14	9	9	3	7	58	60.8	
Fresno St.	02/19/2025	68-48	W	17-57	.298	7-23	.304	7-9	.778	8	26	34	38.0	12	10	10	4	3	48	60.3	
UNLV	02/22/2025	65-69	L	23-53	.434	8-14	.571	15-21	.714	11	29	40	38.0	16	12	9	2	4	69	60.6	
at Nevada	02/26/2025	61-45	W	18-54	.333	3-16	.188	6-6	1.000	12	25	37	38.0	12	9	15	1	3	45	60.1	
Wyoming	03/01/2025	55-68	L	24-49	.490	8-22	.364	12-14	.857	6	34	40	38.1	16	19	13	5	3	68	60.3	
at San Jose St.	03/04/2025	90-70	W	22-54	.407	12-26	.462	14-15	.933	7	26	33	37.9	20	12	16	2	5	70	60.6	
Total		1880		678-1824	.372	221-728	.304	303-415	.730	320	855	1175	37.9	494	387	400	80	130	1880	60.6	
Colorado St.		2139		755-1765	.428	246-696	.353	383-489	.783	195	844	1039	33.5	419	440	274	91	214	2139	69.0	

Opponents Averages

Games Played	Points/game	FG Pct	3FG Pct	FT Pct	Rebounds/game	Assists/game	Turnovers/game	Assist/Turnover ratio	Steals/game	Blocks/game
31	60.6	37.2	30.4	73.0	37.9	12.5	12.9	1.0	4.2	2.6



2024-25 COLORADO STATE SINGLE-GAME HIGHS

POINTS	90	at San Jose St. (03/04/2025)
	87	San Jose St. (01/04/2025)
	85	Columbia (MO) (11/16/2024)
	83	at Utah St. (12/29/2024)
	80	Northern Ariz. (11/23/2024)
FIELD GOALS MADE	33	at San Jose St. (03/04/2025)
	33	Columbia (MO) (11/16/2024)
FIELD GOAL ATTEMPTS	70	at San Jose St. (03/04/2025)
	66	vs SFA (N) (12/21/2024)
FIELD GOAL PERCENTAGE	.521	(25-48) at UNLV (01/08/2025)
	.519	(28-54) Southern U. (11/19/2024)
3 PT FG MADE	13	at Utah St. (12/29/2024)
	13	vs SFA (N) (12/21/2024)
3 PT FG ATTEMPTS	33	vs SFA (N) (12/21/2024)
	31	Oregon St. (11/08/2024)
3 PT FG PERCENTAGE	.533	(8-15) San Diego St. (01/01/2025)
	.520	(13-25) at Utah St. (12/29/2024)
FREE THROWS MADE	27	New Mexico (01/18/2025)
	23	at Boise St. (02/08/2025)
FREE THROW ATTEMPTS	32	New Mexico (01/18/2025)
	26	at Boise St. (02/08/2025)
FREE THROW PERCENTAGE	.944	(17-18) at San Jose St. (03/04/2025)
	.941	(16-17) Air Force (02/01/2025)
REBOUNDS	49	Columbia (MO) (11/16/2024)
	42	Utah St. (02/12/2025)
ASSISTS	25	San Jose St. (01/04/2025)
	22	Northern Ariz. (11/23/2024)
STEALS	12	at Wyoming (01/25/2025)
	11	San Jose St. (01/04/2025)
	11	Columbia (MO) (11/16/2024)
BLOCKED SHOTS	7	at Air Force (02/15/2025)
	7	at New Mexico (02/04/2025)
	7	Northern Ariz. (11/23/2024)
TURNOVERS	18	at UNLV (01/08/2025)
	15	at Utah St. (12/29/2024)
FOULS	20	at Boise St. (02/08/2025)
	20	vs Kent St. (N) (11/29/2024)



2024-25 OPPONENT SINGLE-GAME HIGHS

POINTS	84 80 78 75 74	Northern Ariz. (11/23/2024) vs SFA (N) (12/21/2024) New Mexico (01/18/2025) Air Force (02/01/2025) at Utah St. (12/29/2024)
FIELD GOALS MADE	30 28 28	Northern Ariz. (11/23/2024) Boise St. (01/21/2025) vs SFA (N) (12/21/2024)
FIELD GOAL ATTEMPTS	76 67	Northern Ariz. (11/23/2024) at Wyoming (01/25/2025)
FIELD GOAL PERCENTAGE	.500 .490	(28-56) vs SFA (N) (12/21/2024) (24-49) Wyoming (03/01/2025)
3 PT FG MADE	12 12	at San Jose St. (03/04/2025) at Utah St. (12/29/2024)
3 PT FG ATTEMPTS	32 31 31 31	at BYU (11/13/2024) Utah St. (02/12/2025) at Utah St. (12/29/2024) Northern Ariz. (11/23/2024)
3 PT FG PERCENTAGE	.579 .571	(11-19) Air Force (02/01/2025) (8-14) UNLV (02/22/2025)
FREE THROWS MADE	17 16 16	Gonzaga (12/08/2024) Air Force (02/01/2025) New Mexico (01/18/2025)
FREE THROW ATTEMPTS	22 22 22	Air Force (02/01/2025) New Mexico (01/18/2025) Gonzaga (12/08/2024)
FREE THROW PERCENTAGE	1.000 1.000	(6-6) at Nevada (02/26/2025) (6-6) San Jose St. (01/04/2025)
REBOUNDS	52 50	San Francisco (11/04/2024) at Wyoming (01/25/2025)
ASSISTS	20 19 19	Boise St. (01/21/2025) Wyoming (03/01/2025) at Wyoming (01/25/2025)
STEALS	8 8	at UNLV (01/08/2025) at Utah St. (12/29/2024)
BLOCKED SHOTS	5 5 5 5 5	Wyoming (03/01/2025) at New Mexico (02/04/2025) at UNLV (01/08/2025) vs SFA (N) (12/21/2024) at BYU (11/13/2024)
TURNOVERS	21 17 17	Columbia (MO) (11/16/2024) San Jose St. (01/04/2025) at Utah St. (12/29/2024)
FOULS	25 24	San Francisco (11/04/2024) New Mexico (01/18/2025)



2024-25 COLORADO STATE SINGLE-GAME LOWS

POINTS	52		San Francisco (11/04/2024)
	55		Wyoming (03/01/2025)
	55		at BYU (11/13/2024)
	59		Black Hills St. (11/25/2024)
	60		vs Kent St. (N) (11/29/2024)
FIELD GOALS MADE	17		San Francisco (11/04/2024)
	19		Wyoming (03/01/2025)
	19		at Boise St. (02/08/2025)
	19		vs Brown (N) (11/30/2024)
FIELD GOAL ATTEMPTS	46		vs Brown (N) (11/30/2024)
	48		at Boise St. (02/08/2025)
	48		at UNLV (01/08/2025)
FIELD GOAL PERCENTAGE	.293	(17-58)	San Francisco (11/04/2024)
	.333	(20-60)	New Mexico (01/18/2025)
3 PT FG MADE	4		at UNLV (01/08/2025)
	4		at BYU (11/13/2024)
3 PT FG ATTEMPTS	11		at UNLV (01/08/2025)
	15		San Diego St. (01/01/2025)
	15		Columbia (MO) (11/16/2024)
3 PT FG PERCENTAGE	.200	(4-20)	at BYU (11/13/2024)
	.227	(5-22)	at San Diego St. (01/15/2025)
FREE THROWS MADE	2		vs SFA (N) (12/21/2024)
	3		Oregon St. (11/08/2024)
FREE THROW ATTEMPTS	3		vs SFA (N) (12/21/2024)
	4		Oregon St. (11/08/2024)
FREE THROW PERCENTAGE	.579	(11-19)	at New Mexico (02/04/2025)
	.625	(10-16)	Black Hills St. (11/25/2024)
REBOUNDS	24		Wyoming (03/01/2025)
	24		Air Force (02/01/2025)
ASSISTS	5		at San Diego St. (01/15/2025)
	6		at Nevada (02/26/2025)
	6		at BYU (11/13/2024)
STEALS	1		San Diego St. (01/01/2025)
	3		at UNLV (01/08/2025)
	3		Northern Ariz. (11/23/2024)
BLOCKED SHOTS	0		vs Brown (N) (11/30/2024)
	1		Wyoming (03/01/2025)
	1		Boise St. (01/21/2025)
	1		vs SFA (N) (12/21/2024)
	1		UTEP (12/16/2024)
	1		Gonzaga (12/08/2024)
	1		Black Hills St. (11/25/2024)
	1		Columbia (MO) (11/16/2024)
	1		at BYU (11/13/2024)
	1		Oregon St. (11/08/2024)
TURNOVERS	2		Oregon St. (11/08/2024)
	3		at Wyoming (01/25/2025)
	3		Gonzaga (12/08/2024)
FOULS	7		Oregon St. (11/08/2024)
	8		at New Mexico (02/04/2025)



2024-25 OPPONENT SINGLE-GAME LOWS

POINTS	28		Columbia (MO) (11/16/2024)
	39		Black Hills St. (11/25/2024)
	45		at Nevada (02/26/2025)
	47		Southern U. (11/19/2024)
	47		San Francisco (11/04/2024)
FIELD GOALS MADE	10		Columbia (MO) (11/16/2024)
	13		Black Hills St. (11/25/2024)
FIELD GOAL ATTEMPTS	49		Wyoming (03/01/2025)
	51		Air Force (02/01/2025)
FIELD GOAL PERCENTAGE	.192	(10-52)	Columbia (MO) (11/16/2024)
	.228	(13-57)	Black Hills St. (11/25/2024)
3 PT FG MADE	2		Columbia (MO) (11/16/2024)
	3		at Nevada (02/26/2025)
	3		at San Diego St. (01/15/2025)
3 PT FG ATTEMPTS	13		vs Georgia (N) (12/20/2024)
	14		UNLV (02/22/2025)
3 PT FG PERCENTAGE	.077	(2-26)	Columbia (MO) (11/16/2024)
	.154	(4-26)	at Wyoming (01/25/2025)
FREE THROWS MADE	2		at New Mexico (02/04/2025)
	6		at Nevada (02/26/2025)
	6		at Wyoming (01/25/2025)
	6		San Jose St. (01/04/2025)
	6		San Diego St. (01/01/2025)
	6		vs Georgia (N) (12/20/2024)
	6		Columbia (MO) (11/16/2024)
	6		Oregon St. (11/08/2024)
FREE THROW ATTEMPTS	6		at Nevada (02/26/2025)
	6		at New Mexico (02/04/2025)
	6		San Jose St. (01/04/2025)
FREE THROW PERCENTAGE	.333	(2-6)	at New Mexico (02/04/2025)
	.583	(7-12)	UTEP (12/16/2024)
REBOUNDS	26		at UNLV (01/08/2025)
	28		Utah St. (02/12/2025)
	28		San Diego St. (01/01/2025)
ASSISTS	4		Columbia (MO) (11/16/2024)
	9		at Nevada (02/26/2025)
	9		at Air Force (02/15/2025)
	9		Utah St. (02/12/2025)
	9		at Boise St. (02/08/2025)
	9		Black Hills St. (11/25/2024)
STEALS	0		at Wyoming (01/25/2025)
	2		Boise St. (01/21/2025)
	2		Oregon St. (11/08/2024)
BLOCKED SHOTS	0		Utah St. (02/12/2025)
	0		Black Hills St. (11/25/2024)
	0		Southern U. (11/19/2024)
TURNOVERS	5		at UNLV (01/08/2025)
	7		San Diego St. (01/01/2025)
FOULS	8		vs SFA (N) (12/21/2024)
	9		Oregon St. (11/08/2024)



2024-25 COLORADO STATE INDIVIDUAL SINGLE-GAME HIGHS

POINTS	29		Emma Ronsiek vs New Mexico (01/18/2025)
	27		Emma Ronsiek vs Air Force (02/01/2025)
	26		Emma Ronsiek vs Oregon St. (11/08/2024)
	24		Emma Ronsiek at Boise St. (02/08/2025)
	24		Hannah Simental vs New Mexico (01/18/2025)
	24		Emma Ronsiek vs San Diego St. (01/01/2025)
	24		Emma Ronsiek vs Georgia (N) (12/20/2024)
	24		Emma Ronsiek vs Kent St. (N) (11/29/2024)
	24		Hannah Ronsiek vs Oregon St. (11/08/2024)
FIELD GOALS MADE	10		Emma Ronsiek vs Kent St. (N) (11/29/2024)
	10		Emma Ronsiek vs Oregon St. (11/08/2024)
FIELD GOAL ATTEMPTS	23		Emma Ronsiek vs New Mexico (01/18/2025)
	22		Emma Ronsiek vs Northern Ariz. (11/23/2024)
FIELD GOAL PERCENTAGE (min 5 made)	1.000	(7-7)	Kloe Froebe at Nevada (02/26/2025)
	.875	(7-8)	Kloe Froebe at Boise St. (02/08/2025)
3 PT FG MADE	6		Emma Ronsiek vs Oregon St. (11/08/2024)
	5		Hannah Simental vs New Mexico (01/18/2025)
	5		Hannah Simental at Utah St. (12/29/2024)
	5		Hannah Simental vs SFA (N) (12/21/2024)
3 PT FG ATTEMPTS	11		Emma Ronsiek vs New Mexico (01/18/2025)
	11		Emma Ronsiek vs Oregon St. (11/08/2024)
3 PT FG PERCENTAGE (min 2 made)	1.000	(2-2)	Marta Leimane vs Utah St. (02/12/2025)
	1.000	(2-2)	Brooke Carlson vs Boise St. (01/21/2025)
	1.000	(2-2)	Marta Leimane vs UTEP (12/16/2024)
	1.000	(2-2)	Kaylee Headrick vs UTEP (12/16/2024)
FREE THROWS MADE	14		Emma Ronsiek vs New Mexico (01/18/2025)
	12		Emma Ronsiek at Boise St. (02/08/2025)
FREE THROW ATTEMPTS	16		Emma Ronsiek vs New Mexico (01/18/2025)
	12		Emma Ronsiek at Boise St. (02/08/2025)
FREE THROW PERCENTAGE (min 3 made)	1.000	(12-12)	Emma Ronsiek at Boise St. (02/08/2025)
	1.000	(9-9)	Hannah Simental vs Boise St. (01/21/2025)
	1.000	(8-8)	Brooke Carlson vs Fresno St. (02/19/2025)
	1.000	(6-6)	Hannah Simental at San Jose St. (03/04/2025)
	1.000	(6-6)	Brooke Carlson vs San Jose St. (01/04/2025)
	1.000	(6-6)	Brooke Carlson vs Kent St. (N) (11/29/2024)
	1.000	(5-5)	Emma Ronsiek vs UTEP (12/16/2024)
	1.000	(5-5)	Kloe Froebe vs Black Hills St. (11/25/2024)
	1.000	(4-4)	Brooke Carlson at San Jose St. (03/04/2025)
	1.000	(4-4)	Emma Ronsiek vs Wyoming (03/01/2025)
	1.000	(4-4)	Hannah Simental at Boise St. (02/08/2025)
	1.000	(4-4)	Hannah Simental vs Air Force (02/01/2025)
	1.000	(4-4)	Hannah Ronsiek vs Air Force (02/01/2025)
	1.000	(4-4)	Brooke Carlson at Wyoming (01/25/2025)
	1.000	(4-4)	Emma Ronsiek at Wyoming (01/25/2025)
	1.000	(4-4)	Emma Ronsiek vs Brown (N) (11/30/2024)
	1.000	(4-4)	Hannah Simental vs Northern Ariz. (11/23/2024)
	1.000	(4-4)	Marta Leimane vs Columbia (MO) (11/16/2024)
	1.000	(4-4)	Kloe Froebe at BYU (11/13/2024)
	1.000	(3-3)	Marta Leimane at San Jose St. (03/04/2025)
REBOUNDS	18		Kloe Froebe at San Diego St. (01/15/2025)
	18		Hannah Ronsiek vs San Diego St. (01/01/2025)
ASSISTS	8		Brooke Carlson vs San Jose St. (01/04/2025)
	7		Brooke Carlson vs Air Force (02/01/2025)
	7		Brooke Carlson at Wyoming (01/25/2025)
	7		Sanna Strom vs Northern Ariz. (11/23/2024)



2024-25 OPPONENT INDIVIDUAL SINGLE-GAME HIGHS

POINTS	34		Allyson Fertig at Wyoming (01/25/2025)
	27		Cheyenne Stubbs at Utah St. (12/29/2024)
	27		Ashlyn Traylor-Walker vs SFA (N) (12/21/2024)
	25		Vianè Cumber vs New Mexico (01/18/2025)
	25		Taylor Feldman vs Northern Ariz. (11/23/2024)
FIELD GOALS MADE	15		Allyson Fertig at Wyoming (01/25/2025)
	11		Cheyenne Stubbs at Utah St. (12/29/2024)
FIELD GOAL ATTEMPTS	27		Allyson Fertig at Wyoming (01/25/2025)
	21		Cheyenne Stubbs at Utah St. (12/29/2024)
	21		Dionna Gray vs Kent St. (N) (11/29/2024)
FIELD GOAL PERCENTAGE (min 5 made)	.700	(7-10)	Trinity Moore vs SFA (N) (12/21/2024)
	.667	(8-12)	Carlie Latta at Utah St. (12/29/2024)
3 PT FG MADE	5		Jo Huntimer vs Air Force (02/01/2025)
	5		Ashlyn Traylor-Walker vs SFA (N) (12/21/2024)
3 PT FG ATTEMPTS	12		Lexi Miller vs Columbia (MO) (11/16/2024)
	11		Mia Tarver vs Utah St. (02/12/2025)
	11		Delaney Gibb at BYU (11/13/2024)
3 PT FG PERCENTAGE (min 2 made)	1.000	(4-4)	Alyssa Brown vs UNLV (02/22/2025)
	1.000	(3-3)	Gracie Johnson at Utah St. (12/29/2024)
FREE THROWS MADE	9		Yvonne Ejim vs Gonzaga (12/08/2024)
	8		Amiah Simmons at San Jose St. (03/04/2025)
	8		Vianè Cumber vs New Mexico (01/18/2025)
FREE THROW ATTEMPTS	12		Yvonne Ejim vs Gonzaga (12/08/2024)
	10		Faith Blackstone vs SFA (N) (12/21/2024)
FREE THROW PERCENTAGE (min 3 made)	1.000	(8-8)	Amiah Simmons at San Jose St. (03/04/2025)
	1.000	(7-7)	Sophie Glancey vs Northern Ariz. (11/23/2024)
	1.000	(6-6)	Cheyenne Stubbs vs Utah St. (02/12/2025)
	1.000	(6-6)	Veronica Sheffey at San Diego St. (01/15/2025)
	1.000	(5-5)	Aaliyah Alexander at UNLV (01/08/2025)
	1.000	(5-5)	Freja Werth vs San Francisco (11/04/2024)
	1.000	(4-4)	Malene Pedersen vs Wyoming (03/01/2025)
	1.000	(4-4)	Kendra Hicks at Nevada (02/26/2025)
	1.000	(4-4)	Keelie O'Hollaren vs Air Force (02/01/2025)
	1.000	(4-4)	Naomi Panganiban at San Diego St. (01/15/2025)
	1.000	(3-3)	Sydni Summers at San Jose St. (03/04/2025)
	1.000	(3-3)	McKinley Dickerson vs Wyoming (03/01/2025)
	1.000	(3-3)	Danae Powell vs Fresno St. (02/19/2025)
	1.000	(3-3)	Joana Magalhães vs New Mexico (01/18/2025)
	1.000	(3-3)	Dionna Gray vs Kent St. (N) (11/29/2024)
	1.000	(3-3)	Mya Miller vs Columbia (MO) (11/16/2024)
REBOUNDS	19		Maud Huijbens vs Gonzaga (12/08/2024)
	17		Allyson Fertig vs Wyoming (03/01/2025)
	17		Kelsey Rees vs Oregon St. (11/08/2024)
ASSISTS	9		Ola Ustowska at Wyoming (01/25/2025)
	9		Mya Hansen vs Boise St. (01/21/2025)
	9		Allie Turner vs Gonzaga (12/08/2024)
STEALS	4		Madison Smith at Air Force (02/15/2025)
	3		Jayda McNabb at Air Force (02/15/2025)
	3		Taliyah Logwood vs Utah St. (02/12/2025)
	3		Alyssa Hargrove vs New Mexico (01/18/2025)
	3		Alyssa Brown at UNLV (01/08/2025)
	3		Lexi Miller vs Columbia (MO) (11/16/2024)



RAM CAREER SUMMARIES

CARLSON, Brooke

				Field Goals		3-Point		F-Throws		Rebounds									Scoring	
SEASON	TEAM	GP-GS	MIN/AVG	FG-FGA	FG%	3FG-3FGA	3FG%	FT-FTA	FT%	OFF	DEF	TOT	AVG	PF-FO	A	TO	BLK	STL	PTS	AVG
2024-25	CSU	31-14	626/20.2	74-191	.387	16-57	.281	72-96	.750	9	38	47	1.5	53-0	79	40	8	40	236	7.6
TOTAL		31-14	626/20.2	74-191	.387	16-57	.281	72-96	.750	9	38	47	1.5	53-0	79	40	8	40	236	7.6

Single Game Highs

Statistic	Value	
Points	18	vs Gonzaga 12/08/24
Rebounds	7	vs Fresno St. 02/19/25
Assists	8	vs San Jose St. 01/04/25
Steals	3	4 times
Blocks	2	at San Diego St. 01/15/25
FG Made	6	vs Utah St. 02/12/25
FG Attempts	14	vs New Mexico 01/18/25
3FG Made	2	vs Gonzaga 12/08/24, vs Boise St. 01/21/25
3FG Attempts	4	4 times
FT Made	8	vs Fresno St. 02/19/25
FT Attempts	10	at San Diego St. 01/15/25

FIFE, Jady

				Field Goals		3-Point		F-Throws		Rebounds									Scoring	
SEASON	TEAM	GP-GS	MIN/AVG	FG-FGA	FG%	3FG-3FGA	3FG%	FT-FTA	FT%	OFF	DEF	TOT	AVG	PF-FO	A	TO	BLK	STL	PTS	AVG
2023-24	CSU	24-0	132/5.5	12-34	.353	2-13	.154	0-1	.000	1	21	22	0.9	9-0	4	4	0	5	26	1.1
2024-25	CSU	31-0	348/11.2	37-94	.394	14-42	.333	8-8	1.000	4	54	58	1.9	22-0	12	13	5	9	96	3.1
TOTAL		55-0	480/8.7	49-128	.383	16-55	.291	8-9	.889	5	75	80	1.5	31-0	16	17	5	14	122	2.2

Single Game Highs

Statistic	Value	
Points	12	vs Boise St. 01/21/25
Rebounds	6	vs Northern Ariz. 11/23/24
Assists	3	vs Alabama A&M 11/09/23
Steals	2	vs Alabama A&M 11/09/23, at Wyoming 01/25/25
Blocks	1	5 times
FG Made	5	vs Boise St. 01/21/25
FG Attempts	9	at Wyoming 01/25/25, vs Boise St. 01/21/25
3FG Made	2	4 times
3FG Attempts	5	at Wyoming 01/25/25
FT Made	2	4 times
FT Attempts	2	4 times



RAM CAREER SUMMARIES

FROEBE, Kloe

				Field Goals		3-Point		F-Throws		Rebounds										Scoring	
SEASON	TEAM	GP-GS	MIN/AVG	FG-FGA	FG%	3FG-3FGA	3FG%	FT-FTA	FT%	OFF	DEF	TOT	AVG	PF-FO	A	TO	BLK	STL	PTS	AVG	
2024-25	CSU	31-18	605/19.5	101-200	.505	5-31	.161	60-79	.759	57	76	133	4.3	36-0	43	23	1	16	267	8.6	
TOTAL		31-18	605/19.5	101-200	.505	5-31	.161	60-79	.759	57	76	133	4.3	36-0	43	23	1	16	267	8.6	

Single Game Highs

Statistic	Value	
Points	22	at Nevada 02/26/25
Rebounds	18	at San Diego St. 01/15/25
Assists	5	vs SFA 12/21/24, vs Northern Ariz. 11/23/24
Steals	3	vs New Mexico 01/18/25, vs Columbia (MO) 11/16/24
Blocks	1	at New Mexico 02/04/25
FG Made	9	vs Utah St. 02/12/25
FG Attempts	16	at San Diego St. 01/15/25
3FG Made	2	vs SFA 12/21/24
3FG Attempts	4	at BYU 11/13/24
FT Made	7	at Nevada 02/26/25
FT Attempts	8	at Nevada 02/26/25

HEADRICK, Kaylee

				Field Goals		3-Point		F-Throws		Rebounds									Scoring	
SEASON	TEAM	GP-GS	MIN/AVG	FG-FGA	FG%	3FG-3FGA	3FG%	FT-FTA	FT%	OFF	DEF	TOT	AVG	PF-FO	A	TO	BLK	STL	PTS	AVG
2024-25	CSU	27-4	219/8.1	20-48	.417	8-19	.421	7-8	.875	11	28	39	1.4	10-0	16	6	4	2	55	2.0
TOTAL		27-4	219/8.1	20-48	.417	8-19	.421	7-8	.875	11	28	39	1.4	10-0	16	6	4	2	55	2.0

Single Game Highs

Statistic	Value	
Points	9	at New Mexico 02/04/25
Rebounds	7	vs Columbia (MO) 11/16/24
Assists	5	vs SFA 12/21/24
Steals	1	at Utah St. 12/29/24, vs San Jose St. 01/04/25
Blocks	2	at New Mexico 02/04/25
FG Made	3	at New Mexico 02/04/25, vs Black Hills St. 11/25/24, vs UTEP 12/16/24
FG Attempts	6	at BYU 11/13/24
3FG Made	2	vs UTEP 12/16/24
3FG Attempts	3	vs SFA 12/21/24
FT Made	2	at New Mexico 02/04/25, at Utah St. 12/29/24, vs San Jose St. 01/04/25
FT Attempts	2	4 times



RAM CAREER SUMMARIES

LEIMANE, Marta

				Field Goals		3-Point		F-Throws		Rebounds										Scoring	
SEASON	TEAM	GP-GS	MIN/AVG	FG-FGA	FG%	3FG-3FGA	3FG%	FT-FTA	FT%	OFF	DEF	TOT	AVG	PF-FO	A	TO	BLK	STL	PTS	AVG	
2022-23	CSU	17-0	111/6.5	18-35	.514	4-10	.400	8-9	.889	0	7	7	0.4	2-0	8	9	0	6	48	2.8	
2023-24	CSU	29-11	673/23.2	104-222	.468	19-56	.339	12-28	.429	3	87	90	3.1	42-0	33	31	8	17	239	8.2	
2024-25	CSU	31-25	754/24.3	82-200	.410	11-41	.268	26-35	.743	5	87	92	3.0	65-1	71	46	23	18	201	6.5	
TOTAL		77-36	1538/20.0	204-457	.446	34-107	.318	46-72	.639	8	181	189	2.5	109-1	112	86	31	41	488	6.3	

Single Game Highs

Statistic	Value	
Points	24	at Utah St. 02/24/24
Rebounds	10	at UNLV 02/14/24, vs Oregon St. 11/08/24
Assists	5	vs Southern U. 11/19/24, at New Mexico 02/04/25
Steals	4	vs South Dakota Mines 11/21/23
Blocks	3	at New Mexico 02/04/25, vs Northern Ariz. 11/23/24, vs San Diego St. 01/01/25
FG Made	12	at Utah St. 02/24/24
FG Attempts	22	at UNLV 03/12/24
3FG Made	3	vs Fresno St. 02/07/24, at UNLV 02/14/24
3FG Attempts	5	at UNLV 03/12/24, at San Jose St. 03/02/24, at UNLV 02/14/24
FT Made	4	vs Western Colo. 11/15/22, vs Columbia (MO) 11/16/24
FT Attempts	4	6 times

RONSIEK, Emma

				Field Goals		3-Point		F-Throws		Rebounds										Scoring	
SEASON	TEAM	GP-GS	MIN/AVG	FG-FGA	FG%	3FG-3FGA	3FG%	FT-FTA	FT%	OFF	DEF	TOT	AVG	PF-FO	A	TO	BLK	STL	PTS	AVG	
2020-21	CU	20-14	557/27.8	87-185	.470	29-80	.363	28-35	.800	27	74	101	5.1	40-1	23	25	13	5	231	11.6	
2021-22	CU	32-32	904/28.3	174-360	.483	42-124	.339	55-79	.696	51	110	161	5.0	57-0	81	47	28	25	445	13.9	
2022-23	CU	31-31	921/29.7	155-339	.457	48-125	.384	52-65	.800	42	122	164	5.3	77-3	93	73	13	30	410	13.2	
2023-24	CU	32-32	1084/33.9	187-396	.472	40-121	.331	122-137	.891	42	129	171	5.3	86-4	85	66	38	33	536	16.8	
2024-25	CSU	31-31	1148/37.0	189-449	.421	69-193	.358	103-127	.811	28	156	184	5.9	39-0	83	44	10	26	550	17.7	
TOTAL FOR CSU		31-31	1148/37.0	189-449	.421	69-193	.358	103-127	.811	28	156	184	5.9	39-0	83	44	10	26	550	17.7	
TOTAL		146-140	4615/31.6	792-1729	.458	228-643	.355	360-443	.813	190	591	781	5.3	299-8	365	255	102	119	2172	14.9	

Single Game Highs

Statistic	Value	
Points	31	at Drake 12/17/23
Rebounds	14	vs Michigan St. 11/24/23
Assists	7	vs Georgetown 02/18/23, vs Xavier 02/27/24
Steals	4	at Marquette 02/22/23, vs North Dakota St. 11/06/23, at Villanova 01/21/24
Blocks	7	vs South Dakota St. 12/21/23
FG Made	13	vs DePaul 12/22/20, at Drake 12/17/23
FG Attempts	23	vs New Mexico 01/18/25
3FG Made	6	vs UNI 12/03/23, vs Oregon St. 11/08/24
3FG Attempts	11	vs New Mexico 01/18/25, vs Oregon St. 11/08/24
FT Made	14	vs New Mexico 01/18/25
FT Attempts	16	vs New Mexico 01/18/25



RAM CAREER SUMMARIES

RONSIEK, Hannah

SEASON	TEAM	GP-GS	MIN/AVG	Field Goals		3-Point		F-Throws		Rebounds									Scoring	
				FG-FGA	FG%	3FG-3FGA	3FG%	FT-FTA	FT%	OFF	DEF	TOT	AVG	PF-FO	A	TO	BLK	STL	PTS	AVG
2022-23	CSU	32-3	393/12.3	33-78	.423	23-55	.418	7-8	.875	2	81	83	2.6	47-0	14	17	7	26	96	3.0
2023-24	CSU	29-29	902/31.1	91-209	.435	53-137	.387	12-14	.857	4	169	173	6.0	63-2	41	34	33	31	247	8.5
2024-25	CSU	31-31	1020/32.9	101-227	.445	50-121	.413	34-40	.850	6	180	186	6.0	85-5	50	29	27	44	286	9.2
TOTAL		92-63	2314/25.2	225-514	.438	126-313	.403	53-62	.855	12	430	442	4.8	195-7	105	80	67	101	629	6.8

Single Game Highs

Statistic	Value	
Points	25	at UTEP 11/30/23
Rebounds	18	vs San Diego St. 01/01/25
Assists	5	vs Boise St. 01/21/25
Steals	4	vs Montana 11/11/22, at Air Force 01/31/24, at Wyoming 01/25/25
Blocks	3	7 times
FG Made	9	at UTEP 11/30/23, vs Oregon St. 11/08/24
FG Attempts	16	vs Oregon St. 11/08/24
3FG Made	7	at UTEP 11/30/23
3FG Attempts	10	at UTEP 11/30/23
FT Made	5	at New Mexico 02/04/25
FT Attempts	6	at New Mexico 02/04/25, vs Brown 11/30/24

SIMENTAL, Hannah

SEASON	TEAM	GP-GS	MIN/AVG	Field Goals		3-Point		F-Throws		Rebounds									Scoring	
				FG-FGA	FG%	3FG-3FGA	3FG%	FT-FTA	FT%	OFF	DEF	TOT	AVG	PF-FO	A	TO	BLK	STL	PTS	AVG
2020-21	UNC	24-22	688/28.7	70-160	.438	39-90	.433	33-41	.805	8	28	36	1.5	38-0	26	18	1	19	212	8.8
2021-22	UNC	29-29	929/32.0	125-300	.417	71-167	.425	106-117	.906	12	48	60	2.1	54-1	57	64	1	38	427	14.7
2022-23	UNC	31-31	1019/32.9	126-308	.409	64-169	.379	104-114	.912	14	79	93	3.0	53-0	51	63	2	30	420	13.5
2023-24	UNC	31-31	1110/35.8	138-332	.416	71-185	.384	44-53	.830	14	99	113	3.6	49-0	73	54	4	42	391	12.6
2024-25	CSU	31-16	886/28.6	102-237	.430	56-141	.397	52-59	.881	1	61	62	2.0	44-1	44	34	2	42	312	10.1
TOTAL FOR CSU		31-16	886/28.6	102-237	.430	56-141	.397	52-59	.881	1	61	62	2.0	44-1	44	34	2	42	312	10.1
TOTAL		146-129	4631/31.7	561-1337	.420	301-752	.400	339-384	.883	49	315	364	2.5	238-2	251	233	10	171	1762	12.1

Single Game Highs

Statistic	Value	
Points	29	at North Dakota St. 11/22/22
Rebounds	8	at Montana 02/10/24, vs Portland St. 02/15/24
Assists	6	at Weber St. 02/03/24, vs Eastern Wash. 01/25/24
Steals	5	at New Mexico 02/04/25, at Southern Utah 02/14/22
Blocks	1	10 times
FG Made	10	at Oral Roberts 01/03/24, at North Dakota St. 11/22/22
FG Attempts	20	at Oral Roberts 01/03/24
3FG Made	6	vs Boston U. 11/26/23, at North Dakota St. 11/22/22
3FG Attempts	12	vs Boston U. 11/26/23
FT Made	11	at Weber St. 02/06/23, vs South Dakota 12/02/22
FT Attempts	14	at Weber St. 02/06/23



RAM CAREER SUMMARIES

STROM, Sanna

				Field Goals		3-Point		F-Throws		Rebounds									Scoring	
SEASON	TEAM	GP-GS	MIN/AVG	FG-FGA	FG%	3FG-3FGA	3FG%	FT-FTA	FT%	OFF	DEF	TOT	AVG	PF-FO	A	TO	BLK	STL	PTS	AVG
2021-22	KU	9-0	62/6.9	5-15	.333	1-7	.143	3-4	.750	0	8	8	0.9	4-0	3	3	0	1	14	1.6
2022-23	KU	36-8	588/16.3	28-114	.246	23-77	.299	14-21	.667	4	60	64	1.8	35-0	29	41	1	19	93	2.6
2023-24	CSU	31-26	810/26.1	70-174	.402	30-82	.366	24-30	.800	9	100	109	3.5	45-0	52	43	8	9	194	6.3
2024-25	CSU	13-11	344/26.5	30-71	.423	16-48	.333	10-14	.714	3	54	57	4.4	33-0	27	5	4	6	86	6.6
TOTAL FOR CSU		44-37	1154/26.2	100-245	.408	46-130	.354	34-44	.773	12	154	166	3.8	78-0	79	48	12	15	280	6.4
TOTAL		89-45	1805/20.3	133-374	.356	70-214	.327	51-69	.739	16	222	238	2.7	117-0	111	92	13	35	387	4.3

Single Game Highs

Statistic	Value	
Points	17	at UNLV 02/14/24
Rebounds	8	at Montana 12/09/23, vs Northern Ariz. 11/23/24
Assists	8	vs Fresno St. 02/07/24
Steals	2	5 times
Blocks	3	vs Northern Ariz. 11/23/24
FG Made	7	at UNLV 02/14/24
FG Attempts	11	vs High Point 12/05/23
3FG Made	3	6 times
3FG Attempts	8	at Kansas St. 02/22/23
FT Made	5	at Utah St. 02/24/24
FT Attempts	8	vs Southeast Mo. St. 12/04/22

VAZ, Joseana

				Field Goals		3-Point		F-Throws		Rebounds									Scoring	
SEASON	TEAM	GP-GS	MIN/AVG	FG-FGA	FG%	3FG-3FGA	3FG%	FT-FTA	FT%	OFF	DEF	TOT	AVG	PF-FO	A	TO	BLK	STL	PTS	AVG
2022-23	CSU	24-2	322/13.4	39-97	.402	2-11	.182	2-5	.400	41	39	80	3.3	42-1	10	14	9	15	82	3.4
2024-25	CSU	23-5	215/9.4	16-37	.432	0-2	.000	11-23	.478	31	27	58	2.5	28-0	12	13	7	8	43	1.9
TOTAL		47-7	537/11.4	55-134	.410	2-13	.154	13-28	.464	72	66	138	2.9	70-1	22	27	16	23	125	2.7

Single Game Highs

Statistic	Value	
Points	10	vs BYU 11/08/22, at Northern Colo. 11/29/22
Rebounds	12	at Northern Colo. 11/29/22
Assists	3	at Northern Colo. 11/29/22
Steals	2	6 times
Blocks	3	vs UNLV 02/22/25
FG Made	5	vs BYU 11/08/22, at Northern Colo. 11/29/22
FG Attempts	15	at Northern Colo. 11/29/22
3FG Made	1	vs Montana 11/11/22, vs San Francisco 12/10/22
3FG Attempts	3	at UNLV 12/31/22
FT Made	3	vs Southern U. 11/19/24, vs Kent St. 11/29/24
FT Attempts	4	5 times



RAM CAREER SUMMARIES

ZACHARIAH, Ann

				Field Goals		3-Point		F-Throws		Rebounds									Scoring	
SEASON	TEAM	GP-GS	MIN/AVG	FG-FGA	FG%	3FG-3FGA	3FG%	FT-FTA	FT%	OFF	DEF	TOT	AVG	PF-FO	A	TO	BLK	STL	PTS	AVG
2024-25	CSU	12-0	50/4.2	3-11	.273	1-1	1.000	0-0	.000	1	4	5	0.4	4-0	3	4	0	3	7	0.6
TOTAL		12-0	50/4.2	3-11	.273	1-1	1.000	0-0	.000	1	4	5	0.4	4-0	3	4	0	3	7	0.6

Single Game Highs

Statistic	Value	
Points	7	vs Columbia (MO) 11/16/24
Rebounds	2	vs UTEP 12/16/24
Assists	1	vs Southern U. 11/19/24, vs San Diego St. 01/01/25, vs San Jose St. 01/04/25
Steals	2	vs Columbia (MO) 11/16/24
FG Made	3	vs Columbia (MO) 11/16/24
FG Attempts	6	vs Columbia (MO) 11/16/24
3FG Made	1	vs Columbia (MO) 11/16/24
3FG Attempts	1	vs Columbia (MO) 11/16/24



TV ROSTER



Kaylee Headrick
Jr. • F • 5-10
Bluffdale, UT



Kloe Froebe
Fr. • G • 5-8
Lincoln, IL



Brooke Carlson
Fr. • G • 5-8
Batavia, IL



Avree Antony
r-Fr. • G • 5-10
Sun Prairie, WI



#5 Jady Fife
r-So. • F • 6-0
North Richland Hills, TX



Joseana Vaz
r-Sr. • F • 6-0
Praia, Cape Verde



Ann Zachariah
r-So. • F • 6-2
Kerala, India



Marta Leimane
Jr. • F • 6-0
Ventspils, Latvia



Sanna Ström
Sr. • G • 6-0
Lulea, Sweden



Emma Ronsiek
Gr. • F • 6-2
Sioux Falls, SD



Caitlin Kramer
Fr. • G • 6-3
Colorado Springs, CO



Olivia Pawlicki
Fr. • F • 6-1
Shakopee, MN



Hannah Ronsiek
Jr. • G • 5-11
Sioux Falls, SD



McKenna Murphy
Fr. • G • 5-11
Omaha, NE



Hannah Simental
Gr. • G • 5-8
Pueblo, CO



Ryun Williams
Head Coach
13th Season



Rico Burkett
Assistant Coach



Buck Scheel
Assistant Coach



Kasondra McKay
Assistant Coach



Annie Brady
Assistant Coach



Marcie Johnston
Director of Operations