

## FINAL SCORE



**Arizona St.**

**73**



**Colorado**

**77**

**February 14, 2019 • CU Events Center (Sox Walseth Court) -  
Boulder, Colo.**

## FINAL STATISTICS

**Official Box Score**  
**Arizona St. vs Colorado**  
**Game Totals -- Final Statistics**  
**February 14, 2019 at CU Events Center (Sox Walseth Court) - Boulder, Colo.**

**Arizona St. 73**

No.	Player	S	Pts	FG	3FG	FT	OR	DR	TR	PF	A	TO	Blk	Stl	Min	+/-
00	Dort, Luguentz		21	5-13	3-6	8-9	0	4	4	2	2	2	0	2	28	-1
01	Martin, Remy		9	4-10	1-3	0-3	3	1	4	0	6	2	0	1	38	-1
02	Edwards, Rob		4	1-7	0-4	2-4	0	1	1	2	2	0	0	2	23	2
23	White, Romello		10	5-10	0-0	0-1	3	0	3	4	0	3	0	0	30	-3
45	Cheatham, Zylan		12	4-9	1-1	3-5	3	7	10	3	1	2	0	2	28	3
11	Valtonen, Elias		0	0-0	0-0	0-0	0	1	1	0	0	0	0	0	2	-1
14	Lawrence, Kimani		9	3-4	3-4	0-0	0	3	3	3	0	0	1	0	25	-5
32	Lake, De'quon		0	0-0	0-0	0-0	0	1	1	2	0	1	0	0	6	-8
35	Cherry, Taeshon		8	3-6	2-5	0-0	0	3	3	4	0	0	1	0	20	-6
	Team						2	1	3	0		1				
<b>TOTALS</b>			<b>73</b>	<b>25-59</b>	<b>10-23</b>	<b>13-22</b>	<b>11</b>	<b>22</b>	<b>33</b>	<b>20</b>	<b>11</b>	<b>11</b>	<b>2</b>	<b>7</b>	<b>200</b>	

*Shooting By Period*

Period	FG	FG%	3FG	3FG%	FT	FT%
1st Half	12-25	48%	4-9	44%	4-7	57%
2nd Half	13-34	38%	6-14	43%	9-15	60%
<b>Game</b>	<b>25-59</b>	<b>42.4%</b>	<b>10-23</b>	<b>43.5%</b>	<b>13-22</b>	<b>59.1%</b>

Last FG: 2nd-00:03  
Biggest Run: 6-0  
Largest lead: By 6 at 1-06:25  
Technical Fouls: None.

**Colorado 77**

No.	Player	S	Pts	FG	3FG	FT	OR	DR	TR	PF	A	TO	Blk	Stl	Min	+/-
00	Gatling, Shane		9	2-5	1-4	4-4	0	2	2	4	0	0	0	0	18	12
01	Bey, Tyler		22	9-13	0-0	4-6	1	16	17	1	0	1	1	0	33	11
23	Siewert, Lucas		6	2-9	2-7	0-0	1	3	4	2	4	1	0	0	35	10
25	Wright, Mckinley		24	9-12	1-3	5-6	1	5	6	3	8	4	0	1	38	2
31	Schwartz, D'shawn		6	2-8	1-4	1-3	2	0	2	1	1	1	0	0	34	6
02	Kountz, Daylen		2	1-5	0-0	0-0	0	1	1	2	2	0	0	2	22	-14
10	Strating, Alexander		0	0-0	0-0	0-0	0	0	0	3	0	1	0	0	9	-6
21	Batthey, Evan		8	3-5	0-0	2-2	1	1	2	0	1	0	0	1	11	-1
	Team						5	0	5	0		4				
<b>TOTALS</b>			<b>77</b>	<b>28-57</b>	<b>5-18</b>	<b>16-21</b>	<b>11</b>	<b>28</b>	<b>39</b>	<b>16</b>	<b>16</b>	<b>12</b>	<b>1</b>	<b>4</b>	<b>200</b>	

*Shooting By Period*

Period	FG	FG%	3FG	3FG%	FT	FT%
1st Half	14-32	44%	1-9	11%	3-6	50%
2nd Half	14-25	56%	4-9	44%	13-15	87%
<b>Game</b>	<b>28-57</b>	<b>49.1%</b>	<b>5-18</b>	<b>27.8%</b>	<b>16-21</b>	<b>76.2%</b>

Last FG: 2nd-00:58  
Biggest Run: 7-0  
Largest lead: By 10 at 2-00:21  
Technical Fouls: None.

Game Notes:

Officials: Kevin Brill,Rick Bastell,Nate Harris  
Attendance: 6273

Start Time: 2019-02-14 03:45:37  
End Time: 2019-02-14 06:04:41  
Game Duration: 139  
Conference Game;

Score	1st	2nd	TOT
ASU	32	41	<b>73</b>
COL	32	45	<b>77</b>

ASU led for 18:57. COL led for 13:39.  
Game was tied for 7:24.  
Times tied: 9      Lead Changes: 7

Points from	ASU	COL
In the Paint	26	38
Off Turns	10	11
2nd Chance	13	12
Fast Break	5	8
Bench	17	10

**Official Box Score**  
**Arizona St. vs Colorado**  
**First Half Statistics Only**  
**February 14, 2019 at CU Events Center (Sox Walseth Court) - Boulder, Colo.**

**Arizona St. 32**

No.	Player	S	Pts	FG	3FG	FT	OR	DR	TR	PF	A	TO	Blk	Stl	Min	+/-
00	Dort, Luguentz		8	2-4	2-3	2-2	0	2	2	2	2	1	0	0	15	0
01	Martin, Remy		4	2-4	0-1	0-2	1	1	2	0	4	1	0	0	19	0
02	Edwards, Rob		2	1-4	0-2	0-0	0	0	0	1	0	0	0	1	13	0
23	White, Romello		8	4-6	0-0	0-1	1	0	1	0	0	0	0	0	16	1
45	Cheatham, Zylan		2	0-3	0-0	2-2	1	2	3	2	0	2	0	2	12	2
11	Valtonen, Elias		0	0-0	0-0	0-0	0	1	1	0	0	0	0	0	2	-1
14	Lawrence, Kimani		0	0-0	0-0	0-0	0	2	2	0	0	0	0	0	8	1
32	Lake, De'quon		0	0-0	0-0	0-0	0	1	1	1	0	0	0	0	5	-4
35	Cherry, Taeshon		8	3-4	2-3	0-0	0	2	2	2	0	0	1	0	11	1
	Team						0	1	1	0		1				
<b>TOTALS</b>			<b>32</b>	<b>12-25</b>	<b>4-9</b>	<b>4-7</b>	<b>3</b>	<b>12</b>	<b>15</b>	<b>8</b>	<b>6</b>	<b>5</b>	<b>1</b>	<b>3</b>	<b>100</b>	

*Shooting By Period*

Period	FG	FG%	3FG	3FG%	FT	FT%
1st Half	12-25	48%	4-9	44%	4-7	57%
Game	25-59	42.4%	10-23	43.5%	13-22	59.1%

*Last FG Half: ASU 2nd-00:03*

**Colorado 32**

No.	Player	S	Pts	FG	3FG	FT	OR	DR	TR	PF	A	TO	Blk	Stl	Min	+/-
00	Gatling, Shane		2	1-3	0-2	0-0	0	0	0	2	0	0	0	0	6	1
01	Bey, Tyler		9	4-6	0-0	1-2	1	7	8	1	0	0	0	0	16	5
23	Siewert, Lucas		0	0-4	0-2	0-0	1	2	3	0	2	0	0	0	15	3
25	Wright, Mckinley		8	4-6	0-2	0-1	1	2	3	1	4	2	0	0	19	0
31	Schwartz, D'shawn		5	2-6	1-3	0-1	2	0	2	0	1	1	0	0	17	-2
02	Kountz, Daylen		0	0-2	0-0	0-0	0	0	0	1	0	0	0	2	11	-5
10	Strating, Alexander		0	0-0	0-0	0-0	0	0	0	0	0	0	0	0	5	-1
21	Batthey, Evan		8	3-5	0-0	2-2	1	1	2	0	1	0	0	1	11	-1
	Team						2	0	2	0		1				
<b>TOTALS</b>			<b>32</b>	<b>14-32</b>	<b>1-9</b>	<b>3-6</b>	<b>8</b>	<b>12</b>	<b>20</b>	<b>5</b>	<b>8</b>	<b>4</b>	<b>0</b>	<b>3</b>	<b>100</b>	

*Shooting By Period*

Period	FG	FG%	3FG	3FG%	FT	FT%
1st Half	14-32	44%	1-9	11%	3-6	50%
Game	28-57	49.1%	5-18	27.8%	16-21	76.2%

*Last FG Half: COL 2nd-00:58*

Game Notes:

Officials: Kevin Brill,Rick Bastell,Nate Harris  
Attendance: 6273

Start Time: 2019-02-14 03:45:37  
End Time: 2019-02-14 06:04:41  
Game Duration: 139  
Conference Game;

Score	1st	2nd	TOT
ASU	32	41	<b>73</b>
COL	32	45	<b>77</b>

Points from (This Period)	ASU	COL
In the Paint	12	22
Off Turns	2	4
2nd Chance	4	8
Fast Break	4	4
Bench	8	8

**Official Play-By-Play**  
**Arizona St. vs Colorado**  
**First Half**

**February 14, 2019 at CU Events Center (Sox Walseth Court) - Boulder, Colo.**

**Period 1**

**Starters:**

**Arizona St.:** 0 DORT,LUGUENTZ ; 23 WHITE,ROMELLO; 45 CHEATHAM,ZYLAN; 1 MARTIN,REMY; 2 EDWARDS,ROB;

**Colorado:** 0 GATLING,SHANE; 23 SIEWERT,LUCAS; 25 WRIGHT,MCKINLEY; 1 BEY,TYLER; 31 SCHWARTZ,D'SHAWN;

Time	VISITORS: Arizona St.	Score	Margin	HOME: Colorado
19:38				MISSED 3PTR by SCHWARTZ,D'SHAWN
19:36	REBOUND (DEF) by TEAM			
19:20	GOOD! JUMPER by MARTIN,REMY	0-2	V 2	
18:53				MISSED 3PTR by WRIGHT,MCKINLEY
18:50	REBOUND (DEF) by CHEATHAM,ZYLAN			
18:39	GOOD! DUNK by WHITE,ROMELLO	0-4	V 4	
18:39	ASSIST by DORT,LUGUENTZ			
18:21		2-4	V 2	GOOD! DUNK by BEY,TYLER
18:21				ASSIST by WRIGHT,MCKINLEY
17:58	MISSED LAYUP by WHITE,ROMELLO			
17:56				REBOUND (DEF) by BEY,TYLER
17:45				MISSED JUMPER by BEY,TYLER
17:40	REBOUND (DEF) by CHEATHAM,ZYLAN			
17:29	MISSED LAYUP by CHEATHAM,ZYLAN			
17:27				REBOUND (DEF) by BEY,TYLER
17:22				MISSED 3PTR by GATLING,SHANE
17:18	REBOUND (DEF) by DORT,LUGUENTZ			
17:14	MISSED LAYUP by DORT,LUGUENTZ			
17:12				REBOUND (DEF) by WRIGHT,MCKINLEY
17:08		4-4	T	GOOD! DUNK by BEY,TYLER [FB]
17:08				ASSIST by WRIGHT,MCKINLEY
16:44	MISSED JUMPER by CHEATHAM,ZYLAN			
16:41				REBOUND (DEF) by WRIGHT,MCKINLEY
16:37		6-4	H 2	GOOD! LAYUP by WRIGHT,MCKINLEY [FB]
16:17				FOUL (PERSONAL) by GATLING,SHANE
16:17	SUB OUT: DORT,LUGUENTZ			
16:17	SUB IN: LAWRENCE,KIMANI			
16:17	SUB OUT: EDWARDS,ROB			
16:17	SUB IN: CHERRY,TAESHON			
16:12	MISSED LAYUP by CHEATHAM,ZYLAN			
16:10				REBOUND (DEF) by BEY,TYLER
15:57				
15:57				SUB OUT: GATLING,SHANE
15:57				SUB IN: BATTEY,EVAN
15:57				SUB OUT: BEY,TYLER
15:57				SUB IN: KOUNTZ,DAYLEN
15:40				MISSED JUMPER by SIEWERT,LUCAS
15:36	REBOUND (DEF) by LAWRENCE,KIMANI			
15:32				FOUL (PERSONAL) by WRIGHT,MCKINLEY
15:32	GOOD! FT by CHEATHAM,ZYLAN [FB]	6-5	H 1	
15:32	GOOD! FT by CHEATHAM,ZYLAN [FB]	6-6	T	
15:15				TURNOVER (BADPASS) by SCHWARTZ,D'SHAWN
15:15	STEAL by CHEATHAM,ZYLAN			
15:11	TURNOVER (LOSTBALL) by CHEATHAM,ZYLAN			
15:11				STEAL by KOUNTZ,DAYLEN
15:09	SUB OUT: CHEATHAM,ZYLAN			
15:09	SUB IN: DORT,LUGUENTZ			
14:54				MISSED LAYUP by SIEWERT,LUCAS
14:54	BLOCK by CHERRY,TAESHON			
14:49	REBOUND (DEF) by CHERRY,TAESHON			
14:33	MISSED 3PTR by MARTIN,REMY			
14:30	REBOUND (OFF) by WHITE,ROMELLO			
14:29	GOOD! LAYUP by WHITE,ROMELLO	6-8	V 2	
14:10				SUB OUT: SCHWARTZ,D'SHAWN
14:10				SUB IN: GATLING,SHANE
14:10				SUB OUT: SIEWERT,LUCAS
14:10				SUB IN: BEY,TYLER
13:59		8-8	T	GOOD! JUMPER by GATLING,SHANE
13:59				ASSIST by WRIGHT,MCKINLEY
13:48	GOOD! 3PTR by CHERRY,TAESHON	8-11	V 3	
13:48	ASSIST by DORT,LUGUENTZ			
13:20				MISSED 3PTR by GATLING,SHANE
13:16				REBOUND (OFF) by BATTEY,EVAN
13:14				MISSED LAYUP by BATTEY,EVAN
13:14				REBOUND (OFF) by TEAM
13:14	SUB OUT: WHITE,ROMELLO			
13:14	SUB IN: LAKE,DE'QUON			
13:01		10-11	V 1	GOOD! LAYUP by BEY,TYLER
13:01				ASSIST by BATTEY,EVAN
12:44	GOOD! LAYUP by CHERRY,TAESHON	10-13	V 3	
12:44	ASSIST by MARTIN,REMY			
12:26				MISSED 3PTR by WRIGHT,MCKINLEY
12:22	REBOUND (DEF) by LAWRENCE,KIMANI			
12:18				FOUL (PERSONAL) by GATLING,SHANE
12:18	MISSED FT by MARTIN,REMY			
12:18	REBOUND (OFF) by TEAM			

Time	VISITORS: Arizona St.	Score	Margin	HOME: Colorado
12:18				SUB OUT: GATLING,SHANE
12:18				SUB IN: SIEWERT,LUCAS
12:18				SUB OUT: WRIGHT,MCKINLEY
12:18				SUB IN: SCHWARTZ,D'SHAWN
12:18	MISSED FT by MARTIN,REMY			
12:16				REBOUND (DEF) by BEY,TYLER
12:03				MISSED JUMPER by BEY,TYLER
12:00				REBOUND (OFF) by TEAM
12:00				
12:00	SUB OUT: MARTIN,REMY			
12:00	SUB IN: EDWARDS,ROB			
11:36				MISSED LAYUP by KOUNTZ,DAYLEN
11:34				REBOUND (OFF) by SCHWARTZ,D'SHAWN
11:32				MISSED LAYUP by SCHWARTZ,D'SHAWN
11:29	REBOUND (DEF) by LAKE,DE'QUON			
11:20	MISSED 3PTR by DORT,LUGUENTZ			
11:18				REBOUND (DEF) by SIEWERT,LUCAS
11:18	FOUL (PERSONAL) by LAKE,DE'QUON			
11:09				SUB OUT: KOUNTZ,DAYLEN
11:09				SUB IN: WRIGHT,MCKINLEY
11:09	SUB OUT: DORT,LUGUENTZ			
11:09	SUB IN: MARTIN,REMY			
11:09	SUB OUT: LAWRENCE,KIMANI			
11:09	SUB IN: CHEATHAM,ZYLAN			
11:07		12-13	V 1	GOOD! LAYUP by WRIGHT,MCKINLEY
11:07				ASSIST by SIEWERT,LUCAS
10:46	MISSED LAYUP by MARTIN,REMY			
10:45	REBOUND (OFF) by CHEATHAM,ZYLAN			
10:43	MISSED 3PTR by EDWARDS,ROB			
10:39				REBOUND (DEF) by SIEWERT,LUCAS
10:29				MISSED 3PTR by SIEWERT,LUCAS
10:25	REBOUND (DEF) by MARTIN,REMY			
10:20	GOOD! 3PTR by CHERRY,TAESHON	12-16	V 4	
10:20	ASSIST by MARTIN,REMY			
09:59		14-16	V 2	GOOD! JUMPER by WRIGHT,MCKINLEY
09:38	MISSED JUMPER by EDWARDS,ROB			
09:35				REBOUND (DEF) by BATTEY,EVAN
09:31				TURNOVER (BADPASS) by WRIGHT,MCKINLEY
09:31	STEAL by CHEATHAM,ZYLAN			
09:23	TIMEOUT 30SEC			
09:23				SUB OUT: BATTEY,EVAN
09:23				SUB IN: STRATING,ALEXANDER
09:23	SUB OUT: CHERRY,TAESHON			
09:23	SUB IN: DORT,LUGUENTZ			
09:00	TURNOVER (SHOTCLOCK) by			
09:00				SUB OUT: SIEWERT,LUCAS
09:00				SUB IN: KOUNTZ,DAYLEN
09:00	SUB OUT: LAKE,DE'QUON			
09:00	SUB IN: WHITE,ROMELLO			
08:38				MISSED JUMPER by SCHWARTZ,D'SHAWN
08:34	REBOUND (DEF) by DORT,LUGUENTZ			
08:32	TURNOVER (TRAVEL) by CHEATHAM,ZYLAN			
08:19				TURNOVER (BADPASS) by WRIGHT,MCKINLEY
08:19	STEAL by EDWARDS,ROB			
08:11	GOOD! JUMPER by EDWARDS,ROB [FB/PNT]	14-18	V 4	
07:50	FOUL (PERSONAL) by CHEATHAM,ZYLAN			
07:50				
07:50				MISSED FT by BEY,TYLER
07:50				REBOUND (OFF) by TEAM
07:50		15-18	V 3	GOOD! FT by BEY,TYLER
07:24	GOOD! LAYUP by WHITE,ROMELLO [PNT]	15-20	V 5	
06:52				MISSED JUMPER by KOUNTZ,DAYLEN
06:46				REBOUND (OFF) by BEY,TYLER
06:46		17-20	V 3	GOOD! LAYUP by BEY,TYLER
06:25	GOOD! 3PTR by DORT,LUGUENTZ	17-23	V 6	
06:25	ASSIST by MARTIN,REMY			
06:08		19-23	V 4	GOOD! LAYUP by WRIGHT,MCKINLEY [PNT]
06:08	FOUL (PERSONAL) by EDWARDS,ROB			
06:08				SUB OUT: STRATING,ALEXANDER
06:08				SUB IN: SIEWERT,LUCAS
06:08				SUB OUT: BEY,TYLER
06:08				SUB IN: BATTEY,EVAN
06:07				MISSED FT by WRIGHT,MCKINLEY
06:07				REBOUND (OFF) by SIEWERT,LUCAS
05:48		21-23	V 2	GOOD! LAYUP by BATTEY,EVAN
05:48				ASSIST by SCHWARTZ,D'SHAWN
05:29				FOUL (PERSONAL) by KOUNTZ,DAYLEN
05:29	GOOD! FT by DORT,LUGUENTZ	21-24	V 3	
05:29	GOOD! FT by DORT,LUGUENTZ	21-25	V 4	
05:03		23-25	V 2	GOOD! JUMPER by BATTEY,EVAN [PNT]
05:03				ASSIST by WRIGHT,MCKINLEY
04:39	GOOD! 3PTR by DORT,LUGUENTZ	23-28	V 5	
04:39	ASSIST by MARTIN,REMY			
04:24	SUB OUT: MARTIN,REMY			
04:24	SUB IN: CHERRY,TAESHON			
04:24	SUB OUT: EDWARDS,ROB			
04:24	SUB IN: LAWRENCE,KIMANI			

Time	VISITORS: Arizona St.	Score	Margin	HOME: Colorado
04:20	FOUL (PERSONAL) by CHERRY,TAESHON			
04:14				MISSED LAYUP by BATTEY,EVAN
04:12				REBOUND (OFF) by WRIGHT,MCKINLEY
04:10	FOUL (PERSONAL) by CHEATHAM,ZYLAN			
04:03	FOUL (PERSONAL) by DORT,LUGUENTZ			
04:03	SUB OUT: CHEATHAM,ZYLAN			
04:03	SUB IN: MARTIN,REMY			
04:03				SUB OUT: SCHWARTZ,D'SHAWN
04:03				SUB IN: BEY,TYLER
03:43				
03:38				TURNOVER (SHOTCLOCK) by
03:22	MISSED 3PTR by CHERRY,TAESHON			
03:18				REBOUND (DEF) by BEY,TYLER
03:05		25-28	V 3	GOOD! LAYUP by BATTEY,EVAN
02:46	TURNOVER (BADPASS) by MARTIN,REMY			
02:46				STEAL by KOUNTZ,DAYLEN
02:36	FOUL (PERSONAL) by CHERRY,TAESHON			
02:36	SUB OUT: CHERRY,TAESHON			
02:36	SUB IN: EDWARDS,ROB			
02:36		26-28	V 2	GOOD! FT by BATTEY,EVAN
02:36				SUB OUT: KOUNTZ,DAYLEN
02:36				SUB IN: SCHWARTZ,D'SHAWN
02:36		27-28	V 1	GOOD! FT by BATTEY,EVAN
02:21	TURNOVER (LOSTBALL) by DORT,LUGUENTZ			
02:21				STEAL by BATTEY,EVAN
02:12				MISSED 3PTR by SIEWERT,LUCAS
02:06				REBOUND (OFF) by SCHWARTZ,D'SHAWN
02:06		29-28	H 1	GOOD! LAYUP by SCHWARTZ,D'SHAWN
01:57	GOOD! LAYUP by WHITE,ROMELLO [PNT]	29-30	V 1	
01:57				FOUL (PERSONAL) by BEY,TYLER
01:57				SUB OUT: BATTEY,EVAN
01:57				SUB IN: STRATING,ALEXANDER
01:57	SUB OUT: LAWRENCE,KIMANI			
01:57	SUB IN: CHERRY,TAESHON			
01:56	MISSED FT by WHITE,ROMELLO			
01:55				REBOUND (DEF) by BEY,TYLER
01:45	FOUL (PERSONAL) by DORT,LUGUENTZ			
01:45	SUB OUT: DORT,LUGUENTZ			
01:45	SUB IN: VALTONEN,ELIAS			
01:44				MISSED FT by SCHWARTZ,D'SHAWN
01:41	REBOUND (DEF) by CHERRY,TAESHON			
01:21	MISSED 3PTR by EDWARDS,ROB			
01:17	REBOUND (OFF) by MARTIN,REMY			
01:16	GOOD! JUMPER by MARTIN,REMY	29-32	V 3	
01:09				TIMEOUT 30SEC
01:09	SUB OUT: EDWARDS,ROB			
01:09	SUB IN: LAKE,DE'QUON			
00:59		32-32	T	GOOD! 3PTR by SCHWARTZ,D'SHAWN
00:59				ASSIST by SIEWERT,LUCAS
00:33	MISSED LAYUP by WHITE,ROMELLO			
00:30				REBOUND (DEF) by BEY,TYLER
00:04				MISSED 3PTR by SCHWARTZ,D'SHAWN
00:03	REBOUND (DEF) by VALTONEN,ELIAS			

Arizona St. 32, Colorado 32

Points from (This Period)	ASU	COL
In the Paint	12	22
Off Turns	2	4
2nd Chance	4	8
Fast Break	4	4
Bench	8	8

**Official Box Score**  
**Arizona St. vs Colorado**  
**Second Half Statistics Only**  
**February 14, 2019 at CU Events Center (Sox Walseth Court) - Boulder, Colo.**

**Arizona St. 41**

No.	Player	S	Pts	FG	3FG	FT	OR	DR	TR	PF	A	TO	Blk	Stl	Min	+/-
00	Dort, Luguentz		13	3-9	1-3	6-7	0	2	2	0	0	1	0	2	13	-1
01	Martin, Remy		5	2-6	1-2	0-1	2	0	2	0	2	1	0	1	19	-1
02	Edwards, Rob		2	0-3	0-2	2-4	0	1	1	1	2	0	0	1	11	2
23	White, Romello		2	1-4	0-0	0-0	2	0	2	4	0	3	0	0	15	-4
45	Cheatham, Zylan		10	4-6	1-1	1-3	2	5	7	1	1	0	0	0	16	1
11	Valtonen, Elias		0	0-0	0-0	0-0	0	0	0	0	0	0	0	0	0	0
14	Lawrence, Kimani		9	3-4	3-4	0-0	0	1	1	3	0	0	1	0	17	-6
32	Lake, De'quon		0	0-0	0-0	0-0	0	0	0	1	0	1	0	0	1	-4
35	Cherry, Taeshon		0	0-2	0-2	0-0	0	1	1	2	0	0	0	0	9	-7
	Team						2	0	2	0		0				
<b>TOTALS</b>			<b>41</b>	<b>13-34</b>	<b>6-14</b>	<b>9-15</b>	<b>8</b>	<b>10</b>	<b>18</b>	<b>12</b>	<b>5</b>	<b>6</b>	<b>1</b>	<b>4</b>	<b>100</b>	

*Shooting By Period*

Period	FG	FG%	3FG	3FG%	FT	FT%
2nd Half	13-34	38%	6-14	43%	9-15	60%
Game	25-59	42.4%	10-23	43.5%	13-22	59.1%

*Last FG Half: ASU -*

**Colorado 45**

No.	Player	S	Pts	FG	3FG	FT	OR	DR	TR	PF	A	TO	Blk	Stl	Min	+/-
00	Gatling, Shane		7	1-2	1-2	4-4	0	2	2	2	0	0	0	0	13	11
01	Bey, Tyler		13	5-7	0-0	3-4	0	9	9	0	0	1	1	0	16	6
23	Siewert, Lucas		6	2-5	2-5	0-0	0	1	1	2	2	1	0	0	19	7
25	Wright, Mckinley		16	5-6	1-1	5-5	0	3	3	2	4	2	0	1	19	2
31	Schwartz, D'shawn		1	0-2	0-1	1-2	0	0	0	1	0	0	0	0	17	8
02	Kountz, Daylen		2	1-3	0-0	0-0	0	1	1	1	2	0	0	0	11	-9
10	Strating, Alexander		0	0-0	0-0	0-0	0	0	0	3	0	1	0	0	4	-5
21	Batthey, Evan		0	0-0	0-0	0-0	0	0	0	0	0	0	0	0	0	0
	Team						3	0	3	0		3				
<b>TOTALS</b>			<b>45</b>	<b>14-25</b>	<b>4-9</b>	<b>13-15</b>	<b>3</b>	<b>16</b>	<b>19</b>	<b>11</b>	<b>8</b>	<b>8</b>	<b>1</b>	<b>1</b>	<b>100</b>	

*Shooting By Period*

Period	FG	FG%	3FG	3FG%	FT	FT%
2nd Half	14-25	56%	4-9	44%	13-15	87%
Game	28-57	49.1%	5-18	27.8%	16-21	76.2%

*Last FG Half: COL -*

*Game Notes:*

Officials: Kevin Brill, Rick Bastell, Nate Harris  
Attendance: 6273

Start Time: 2019-02-14 03:45:37

End Time: 2019-02-14 06:04:41

Game Duration: 139

Conference Game;

Score	1st	2nd	TOT
ASU	32	41	73
COL	32	45	77

Points from (This Period)	ASU	COL
In the Paint	14	16
Off Turns	8	7
2nd Chance	9	4
Fast Break	1	4
Bench	9	2

**Official Play-By-Play  
Arizona St. vs Colorado  
Second Half**

**February 14, 2019 at CU Events Center (Sox Walseth Court) - Boulder, Colo.**

**Period 2**

**Starters:**

**Arizona St.:** 0 DORT,LUGUENTZ ; 23 WHITE,ROMELLO; 45 CHEATHAM,ZYLAN; 1 MARTIN,REMY; 2 EDWARDS,ROB;  
**Colorado:** 0 GATLING,SHANE; 23 SIEWERT,LUCAS; 25 WRIGHT,MCKINLEY; 1 BEY,TYLER; 31 SCHWARTZ,D'SHAWN;

Time	VISITORS: Arizona St.	Score	Margin	HOME: Colorado
19:41	MISSED 3PTR by DORT,LUGUENTZ			
19:33	REBOUND (OFF) by WHITE,ROMELLO			
19:32	TURNOVER (BADPASS) by WHITE,ROMELLO			
19:32				STEAL by WRIGHT,MCKINLEY
19:25				MISSED LAYUP by BEY,TYLER
19:22	REBOUND (DEF) by CHEATHAM,ZYLAN			
19:20	MISSED LAYUP by WHITE,ROMELLO			
19:18	REBOUND (OFF) by WHITE,ROMELLO			
19:18	MISSED LAYUP by WHITE,ROMELLO			
19:18	REBOUND (OFF) by TEAM			
19:18				SUB OUT: SCHWARTZ,D'SHAWN
19:18				SUB IN: KOUNTZ,DAYLEN
19:13	MISSED JUMPER by MARTIN,REMY			
19:11				REBOUND (DEF) by BEY,TYLER
18:52		35-32	H 3	GOOD! 3PTR by SIEWERT,LUCAS
18:52				ASSIST by KOUNTZ,DAYLEN
18:19				FOUL (PERSONAL) by WRIGHT,MCKINLEY
18:18	GOOD! FT by DORT,LUGUENTZ	35-33	H 2	
18:18	GOOD! FT by DORT,LUGUENTZ	35-34	H 1	
18:18	GOOD! FT by DORT,LUGUENTZ	35-35	T	
18:01				MISSED LAYUP by BEY,TYLER
17:59	REBOUND (DEF) by DORT,LUGUENTZ			
17:52	MISSED LAYUP by MARTIN,REMY			
17:48	REBOUND (OFF) by CHEATHAM,ZYLAN			
17:48	GOOD! LAYUP by CHEATHAM,ZYLAN	35-37	V 2	
17:34		37-37	T	GOOD! LAYUP by WRIGHT,MCKINLEY
17:07	GOOD! LAYUP by MARTIN,REMY	37-39	V 2	
17:07				FOUL (PERSONAL) by GATLING,SHANE
17:07	MISSED FT by MARTIN,REMY			
17:07				REBOUND (DEF) by BEY,TYLER
16:59	SUB OUT: EDWARDS,ROB			
16:59	SUB IN: LAWRENCE,KIMANI			
16:51				MISSED JUMPER by KOUNTZ,DAYLEN
16:47	REBOUND (DEF) by CHEATHAM,ZYLAN			
16:40	GOOD! DUNK by DORT,LUGUENTZ	37-41	V 4	
16:40	ASSIST by MARTIN,REMY			
16:35				TIMEOUT 30SEC
16:35				
16:35				SUB OUT: GATLING,SHANE
16:35				SUB IN: STRATING,ALEXANDER
16:35				SUB OUT: BEY,TYLER
16:35				SUB IN: SCHWARTZ,D'SHAWN
16:05				TURNOVER (SHOTCLOCK) by
15:48				FOUL (PERSONAL) by SIEWERT,LUCAS
15:48				
15:48	MISSED FT by CHEATHAM,ZYLAN			
15:48	REBOUND (OFF) by TEAM			
15:48	GOOD! FT by CHEATHAM,ZYLAN	37-42	V 5	
15:30		39-42	V 3	GOOD! LAYUP by KOUNTZ,DAYLEN [PNT]
15:07	GOOD! LAYUP by WHITE,ROMELLO [PNT]	39-44	V 5	
15:00				MISSED LAYUP by KOUNTZ,DAYLEN
14:58	REBOUND (DEF) by CHEATHAM,ZYLAN			
14:53	TURNOVER (TRAVEL) by MARTIN,REMY			
14:53				SUB OUT: STRATING,ALEXANDER
14:53				SUB IN: BEY,TYLER
14:35		41-44	V 3	GOOD! LAYUP by WRIGHT,MCKINLEY
14:35	FOUL (PERSONAL) by WHITE,ROMELLO			
14:35				SUB OUT: KOUNTZ,DAYLEN
14:35				SUB IN: GATLING,SHANE
14:35		42-44	V 2	GOOD! FT by WRIGHT,MCKINLEY
14:27	MISSED LAYUP by DORT,LUGUENTZ			
14:27				BLOCK by BEY,TYLER
14:23				REBOUND (DEF) by BEY,TYLER
14:17				TURNOVER (LOSTBALL) by WRIGHT,MCKINLEY
14:17	STEAL by MARTIN,REMY			
14:12	MISSED LAYUP by CHEATHAM,ZYLAN			
14:10				REBOUND (DEF) by GATLING,SHANE
13:52				MISSED 3PTR by GATLING,SHANE
13:50				REBOUND (OFF) by TEAM
13:50	FOUL (PERSONAL) by WHITE,ROMELLO			
13:49				SUB OUT: WRIGHT,MCKINLEY
13:49				SUB IN: KOUNTZ,DAYLEN
13:49	SUB OUT: DORT,LUGUENTZ			
13:49	SUB IN: LAKE,DE'QUON			
13:49	SUB OUT: WHITE,ROMELLO			
13:49	SUB IN: CHERRY,TAESHON			



Time	VISITORS: Arizona St.	Score	Margin	HOME: Colorado
13:49	SUB OUT: CHEATHAM,ZYLAN			
13:49	SUB IN: EDWARDS,ROB			
13:46		44-44	T	GOOD! LAYUP by BEY,TYLER
13:46				ASSIST by SIEWERT,LUCAS
13:19	FOUL (OFF) by LAKE,DE'QUON			
13:19	TURNOVER (OFFENSIVE) by LAKE,DE'QUON			
13:18				SUB OUT: KOUNTZ,DAYLEN
13:18				SUB IN: WRIGHT,MCKINLEY
13:02		46-44	H 2	GOOD! JUMPER by BEY,TYLER
13:02				ASSIST by SIEWERT,LUCAS
13:01	TIMEOUT 30SEC			
12:49				FOUL (PERSONAL) by GATLING,SHANE
12:49	MISSED FT by EDWARDS,ROB			
12:49	REBOUND (OFF) by TEAM			
12:49				SUB OUT: GATLING,SHANE
12:49				SUB IN: KOUNTZ,DAYLEN
12:49	SUB OUT: LAKE,DE'QUON			
12:49	SUB IN: WHITE,ROMELLO			
12:49	GOOD! FT by EDWARDS,ROB	46-45	H 1	
12:37				TURNOVER (BADPASS) by WRIGHT,MCKINLEY
12:37	STEAL by EDWARDS,ROB			
12:33	MISSED LAYUP by EDWARDS,ROB			
12:31				REBOUND (DEF) by KOUNTZ,DAYLEN
12:16		48-45	H 3	GOOD! DUNK by BEY,TYLER
12:16				ASSIST by KOUNTZ,DAYLEN
12:05	GOOD! 3PTR by LAWRENCE,KIMANI	48-48	T	
12:05	ASSIST by EDWARDS,ROB			
11:46				MISSED 3PTR by SIEWERT,LUCAS
11:42	REBOUND (DEF) by LAWRENCE,KIMANI			
11:34	MISSED 3PTR by EDWARDS,ROB			
11:29				REBOUND (DEF) by BEY,TYLER
11:20		51-48	H 3	GOOD! 3PTR by SIEWERT,LUCAS
11:20				ASSIST by WRIGHT,MCKINLEY
11:02	MISSED 3PTR by CHERRY,TAESHON			
10:59	REBOUND (OFF) by MARTIN,REMY			
10:57	GOOD! 3PTR by LAWRENCE,KIMANI	51-51	T	
10:57	ASSIST by MARTIN,REMY			
10:31	FOUL (PERSONAL) by EDWARDS,ROB			
10:31				
10:31	SUB OUT: MARTIN,REMY			
10:31	SUB IN: DORT,LUGUENTZ			
10:31		52-51	H 1	GOOD! FT by SCHWARTZ,D'SHAWN
10:31				MISSED FT by SCHWARTZ,D'SHAWN
10:28	REBOUND (DEF) by DORT,LUGUENTZ			
10:15	TURNOVER (TRAVEL) by DORT,LUGUENTZ			
09:59		54-51	H 3	GOOD! LAYUP by WRIGHT,MCKINLEY [PNT]
09:46	MISSED 3PTR by DORT,LUGUENTZ			
09:42				REBOUND (DEF) by WRIGHT,MCKINLEY
09:35				MISSED 3PTR by SIEWERT,LUCAS
09:32				REBOUND (OFF) by TEAM
09:32	SUB OUT: DORT,LUGUENTZ			
09:32	SUB IN: MARTIN,REMY			
09:32	SUB OUT: EDWARDS,ROB			
09:32	SUB IN: CHEATHAM,ZYLAN			
09:28				MISSED LAYUP by SCHWARTZ,D'SHAWN
09:28	BLOCK by LAWRENCE,KIMANI			
09:28				REBOUND (OFF) by TEAM
09:05		56-51	H 5	GOOD! JUMPER by BEY,TYLER
09:05				ASSIST by WRIGHT,MCKINLEY
08:38	FOUL (OFF) by WHITE,ROMELLO			
08:38	TURNOVER (OFFENSIVE) by WHITE,ROMELLO			
08:38				SUB OUT: KOUNTZ,DAYLEN
08:38				SUB IN: GATLING,SHANE
08:27				TURNOVER (TRAVEL) by BEY,TYLER
08:06	MISSED LAYUP by WHITE,ROMELLO			
08:04				REBOUND (DEF) by BEY,TYLER
07:55				MISSED 3PTR by SIEWERT,LUCAS
07:51	REBOUND (DEF) by CHERRY,TAESHON			
07:42				FOUL (PERSONAL) by WRIGHT,MCKINLEY
07:42				
07:42				SUB OUT: BEY,TYLER
07:42				SUB IN: STRATING,ALEXANDER
07:32	MISSED 3PTR by MARTIN,REMY			
07:29	REBOUND (OFF) by TEAM			
07:29				FOUL (PERSONAL) by STRATING,ALEXANDER
07:28	FOUL (OFF) by WHITE,ROMELLO			
07:28	TURNOVER (OFFENSIVE) by WHITE,ROMELLO			
07:17				FOUL (OFF) by STRATING,ALEXANDER
07:17				TURNOVER (OFFENSIVE) by STRATING,ALEXANDER
07:01	GOOD! 3PTR by MARTIN,REMY	56-54	H 2	
06:26		59-54	H 5	GOOD! 3PTR by GATLING,SHANE
06:26				ASSIST by WRIGHT,MCKINLEY
06:09	GOOD! LAYUP by CHEATHAM,ZYLAN	59-56	H 3	
05:52	FOUL (PERSONAL) by CHERRY,TAESHON			
05:52		60-56	H 4	GOOD! FT by WRIGHT,MCKINLEY
05:52				SUB OUT: STRATING,ALEXANDER
05:52				SUB IN: BEY,TYLER

Time	VISITORS: Arizona St.	Score	Margin	HOME: Colorado
05:52	SUB OUT: WHITE,ROMELLO			
05:52	SUB IN: DORT,LUGUENTZ			
05:52		61-56	H 5	GOOD! FT by WRIGHT,MCKINLEY
05:37	MISSED 3PTR by CHERRY,TAESHON			
05:33				REBOUND (DEF) by BEY,TYLER
05:20				MISSED 3PTR by SCHWARTZ,D'SHAWN
05:15	REBOUND (DEF) by CHEATHAM,ZYLAN			
05:02	MISSED LAYUP by DORT,LUGUENTZ			
05:01				REBOUND (DEF) by BEY,TYLER
04:38	FOUL (PERSONAL) by CHERRY,TAESHON			
04:38	SUB OUT: CHERRY,TAESHON			
04:38	SUB IN: EDWARDS,ROB			
04:38		62-56	H 6	GOOD! FT by GATLING,SHANE
04:38		63-56	H 7	GOOD! FT by GATLING,SHANE
04:23	MISSED LAYUP by DORT,LUGUENTZ			
04:20	REBOUND (OFF) by MARTIN,REMY			
04:10	GOOD! DUNK by DORT,LUGUENTZ	63-58	H 5	
04:10	ASSIST by CHEATHAM,ZYLAN			
03:37				MISSED LAYUP by WRIGHT,MCKINLEY
03:34	REBOUND (DEF) by EDWARDS,ROB			
03:21	MISSED JUMPER by MARTIN,REMY			
03:18				REBOUND (DEF) by WRIGHT,MCKINLEY
02:52		66-58	H 8	GOOD! 3PTR by WRIGHT,MCKINLEY
02:41	TIMEOUT 30SEC			
02:41				
02:41				SUB OUT: GATLING,SHANE
02:41				SUB IN: STRATING,ALEXANDER
02:41				SUB OUT: SIEWERT,LUCAS
02:41				SUB IN: KOUNTZ,DAYLEN
02:31	GOOD! 3PTR by LAWRENCE,KIMANI	66-61	H 5	
02:31	ASSIST by EDWARDS,ROB			
02:30	TIMEOUT TEAM			
02:30				SUB OUT: KOUNTZ,DAYLEN
02:30				SUB IN: GATLING,SHANE
02:30				SUB OUT: STRATING,ALEXANDER
02:30				SUB IN: SIEWERT,LUCAS
02:30	SUB OUT: EDWARDS,ROB			
02:30	SUB IN: WHITE,ROMELLO			
02:05		68-61	H 7	GOOD! LAYUP by WRIGHT,MCKINLEY [PNT]
02:05				SUB OUT: GATLING,SHANE
02:05				SUB IN: KOUNTZ,DAYLEN
02:05				SUB OUT: SIEWERT,LUCAS
02:05				SUB IN: STRATING,ALEXANDER
02:05	SUB OUT: WHITE,ROMELLO			
02:05	SUB IN: EDWARDS,ROB			
01:49				FOUL (PERSONAL) by STRATING,ALEXANDER
01:49				SUB OUT: KOUNTZ,DAYLEN
01:49				SUB IN: SIEWERT,LUCAS
01:49				SUB OUT: STRATING,ALEXANDER
01:49				SUB IN: GATLING,SHANE
01:49	SUB OUT: EDWARDS,ROB			
01:49	SUB IN: WHITE,ROMELLO			
01:49	MISSED FT by CHEATHAM,ZYLAN			
01:49				REBOUND (DEF) by GATLING,SHANE
01:19				TURNOVER (SHOTCLOCK) by
01:19				SUB OUT: GATLING,SHANE
01:19				SUB IN: STRATING,ALEXANDER
01:19				SUB OUT: SIEWERT,LUCAS
01:19				SUB IN: KOUNTZ,DAYLEN
01:08	MISSED LAYUP by DORT,LUGUENTZ			
01:06				REBOUND (DEF) by WRIGHT,MCKINLEY
01:04				SUB OUT: KOUNTZ,DAYLEN
01:04				SUB IN: GATLING,SHANE
01:04				SUB OUT: STRATING,ALEXANDER
01:04				SUB IN: SIEWERT,LUCAS
00:58		70-61	H 9	GOOD! DUNK by BEY,TYLER [FB]
00:58				ASSIST by WRIGHT,MCKINLEY
00:49	SUB OUT: WHITE,ROMELLO			
00:49	SUB IN: EDWARDS,ROB			
00:49	MISSED 3PTR by EDWARDS,ROB			
00:49	REBOUND (OFF) by CHEATHAM,ZYLAN			
00:49	GOOD! DUNK by CHEATHAM,ZYLAN	70-63	H 7	
00:49				TIMEOUT 30SEC
00:49	FOUL (PERSONAL) by LAWRENCE,KIMANI			
00:43				SUB OUT: GATLING,SHANE
00:43				SUB IN: KOUNTZ,DAYLEN
00:43		71-63	H 8	GOOD! FT by GATLING,SHANE
00:43		72-63	H 9	GOOD! FT by GATLING,SHANE
00:40	MISSED LAYUP by CHEATHAM,ZYLAN			
00:40				REBOUND (DEF) by SIEWERT,LUCAS
00:40				FOUL (PERSONAL) by SIEWERT,LUCAS
00:40	GOOD! FT by DORT,LUGUENTZ	72-64	H 8	
00:40	GOOD! FT by DORT,LUGUENTZ	72-65	H 7	
00:40				SUB OUT: KOUNTZ,DAYLEN
00:40				SUB IN: GATLING,SHANE
00:33	FOUL (PERSONAL) by LAWRENCE,KIMANI			
00:33		73-65	H 8	GOOD! FT by WRIGHT,MCKINLEY [FB]

Time	VISITORS: Arizona St.	Score	Margin	HOME: Colorado
00:33		74-65	H 9	GOOD! FT by WRIGHT,MCKINLEY [FB]
00:33				FOUL (PERSONAL) by SCHWARTZ,D'SHAWN
00:33				SUB OUT: GATLING,SHANE
00:33				SUB IN: KOUNTZ,DAYLEN
00:33	MISSED FT by DORT,LUGUENTZ			
00:33	REBOUND (OFF) by TEAM			
00:33	GOOD! FT by DORT,LUGUENTZ	74-66	H 8	
00:28				FOUL (PERSONAL) by KOUNTZ,DAYLEN
00:28	GOOD! FT by EDWARDS,ROB [FB]	74-67	H 7	
00:28				SUB OUT: KOUNTZ,DAYLEN
00:28				SUB IN: GATLING,SHANE
00:28	MISSED FT by EDWARDS,ROB			
00:28				TURNOVER (LOSTBALL) by SIEWERT,LUCAS
00:28	STEAL by DORT,LUGUENTZ			
00:27				REBOUND (DEF) by BEY,TYLER
00:27	FOUL (PERSONAL) by LAWRENCE,KIMANI			
00:27		75-67	H 8	GOOD! FT by BEY,TYLER
00:27				SUB OUT: GATLING,SHANE
00:27				SUB IN: KOUNTZ,DAYLEN
00:27				MISSED FT by BEY,TYLER
00:27	REBOUND (DEF) by CHEATHAM,ZYLAN			
00:24	MISSED 3PTR by LAWRENCE,KIMANI			
00:21				REBOUND (DEF) by BEY,TYLER
00:21	FOUL (PERSONAL) by CHEATHAM,ZYLAN			
00:21		76-67	H 9	GOOD! FT by BEY,TYLER
00:21		77-67	H 10	GOOD! FT by BEY,TYLER
00:15	GOOD! 3PTR by DORT,LUGUENTZ	77-70	H 7	
00:08				TURNOVER (BADPASS) by SIEWERT,LUCAS
00:08	STEAL by DORT,LUGUENTZ			
00:03	GOOD! 3PTR by CHEATHAM,ZYLAN	77-73	H 4	

Arizona St. 73, Colorado 77

Points from (This Period)	ASU	COL
In the Paint	14	16
Off Turns	8	7
2nd Chance	9	4
Fast Break	1	4
Bench	9	2

**Official Scoring/Possession Reference Chart**  
**Arizona St. vs Colorado**

**Period 1**

**February 14, 2019 at CU Events Center (Sox Walseth Court) - Boulder, Colo.**

**Period 1**

**Starters:**

**Arizona St.:** 0 DORT,LUGUENTZ ; 23 WHITE,ROMELLO; 45 CHEATHAM,ZYLAN; 1 MARTIN,REMY; 2 EDWARDS,ROB;

**Colorado:** 0 GATLING,SHANE; 23 SIEWERT,LUCAS; 25 WRIGHT,MCKINLEY; 1 BEY,TYLER; 31 SCHWARTZ,D'SHAWN;

Time	VISITORS: Arizona St.	Score	Margin	HOME: Colorado
19:20	GOOD! JUMPER by MARTIN,REMY	0-2	V 2	
18:39	GOOD! DUNK by WHITE,ROMELLO	0-4	V 4	
18:21		2-4	V 2	GOOD! DUNK by BEY,TYLER
17:08		4-4	T	GOOD! DUNK by BEY,TYLER [FB]
16:37		6-4	H 2	GOOD! LAYUP by WRIGHT,MCKINLEY [FB]
15:32	GOOD! FT by CHEATHAM,ZYLAN [FB]	6-5	H 1	
15:32	GOOD! FT by CHEATHAM,ZYLAN [FB]	6-6	T	
14:29	GOOD! LAYUP by WHITE,ROMELLO	6-8	V 2	
13:59		8-8	T	GOOD! JUMPER by GATLING,SHANE
13:48	GOOD! 3PTR by CHERRY,TAESHON	8-11	V 3	
13:01		10-11	V 1	GOOD! LAYUP by BEY,TYLER
12:44	GOOD! LAYUP by CHERRY,TAESHON	10-13	V 3	
11:07		12-13	V 1	GOOD! LAYUP by WRIGHT,MCKINLEY
10:20	GOOD! 3PTR by CHERRY,TAESHON	12-16	V 4	
09:59		14-16	V 2	GOOD! JUMPER by WRIGHT,MCKINLEY
08:11	GOOD! JUMPER by EDWARDS,ROB [FB/PNT]	14-18	V 4	
07:50		15-18	V 3	GOOD! FT by BEY,TYLER
07:24	GOOD! LAYUP by WHITE,ROMELLO [PNT]	15-20	V 5	
06:46		17-20	V 3	GOOD! LAYUP by BEY,TYLER
06:25	GOOD! 3PTR by DORT,LUGUENTZ	17-23	V 6	
06:08		19-23	V 4	GOOD! LAYUP by WRIGHT,MCKINLEY [PNT]
05:48		21-23	V 2	GOOD! LAYUP by BATTEY,EVAN
05:29	GOOD! FT by DORT,LUGUENTZ	21-24	V 3	
05:29	GOOD! FT by DORT,LUGUENTZ	21-25	V 4	
05:03		23-25	V 2	GOOD! JUMPER by BATTEY,EVAN [PNT]
04:39	GOOD! 3PTR by DORT,LUGUENTZ	23-28	V 5	
03:05		25-28	V 3	GOOD! LAYUP by BATTEY,EVAN
02:36		26-28	V 2	GOOD! FT by BATTEY,EVAN
02:36		27-28	V 1	GOOD! FT by BATTEY,EVAN
02:06		29-28	H 1	GOOD! LAYUP by SCHWARTZ,D'SHAWN
01:57	GOOD! LAYUP by WHITE,ROMELLO [PNT]	29-30	V 1	
01:16	GOOD! JUMPER by MARTIN,REMY	29-32	V 3	
00:59		32-32	T	GOOD! 3PTR by SCHWARTZ,D'SHAWN

**Arizona St. 32, Colorado 32**

**Official Scoring/Possession Reference Chart**  
**Arizona St. vs Colorado**

**Period 2**

**February 14, 2019 at CU Events Center (Sox Walseth Court) - Boulder, Colo.**

**Period 2**

**Starters:**

**Arizona St.:** 0 DORT,LUGUENTZ ; 23 WHITE,ROMELLO; 45 CHEATHAM,ZYLAN; 1 MARTIN,REMY; 2 EDWARDS,ROB;

**Colorado:** 0 GATLING,SHANE; 23 SIEWERT,LUCAS; 25 WRIGHT,MCKINLEY; 1 BEY,TYLER; 31 SCHWARTZ,D'SHAWN;

Time	VISITORS: Arizona St.	Score	Margin	HOME: Colorado
18:52		35-32	H 3	GOOD! 3PTR by SIEWERT,LUCAS
18:18	GOOD! FT by DORT,LUGUENTZ	35-33	H 2	
18:18	GOOD! FT by DORT,LUGUENTZ	35-34	H 1	
18:18	GOOD! FT by DORT,LUGUENTZ	35-35	T	
17:48	GOOD! LAYUP by CHEATHAM,ZYLAN	35-37	V 2	
17:34		37-37	T	GOOD! LAYUP by WRIGHT,MCKINLEY
17:07	GOOD! LAYUP by MARTIN,REMY	37-39	V 2	
16:40	GOOD! DUNK by DORT,LUGUENTZ	37-41	V 4	
15:48	GOOD! FT by CHEATHAM,ZYLAN	37-42	V 5	
15:30		39-42	V 3	GOOD! LAYUP by KOUNTZ,DAYLEN [PNT]
15:07	GOOD! LAYUP by WHITE,ROMELLO [PNT]	39-44	V 5	
14:35		41-44	V 3	GOOD! LAYUP by WRIGHT,MCKINLEY
14:35		42-44	V 2	GOOD! FT by WRIGHT,MCKINLEY
13:46		44-44	T	GOOD! LAYUP by BEY,TYLER
13:02		46-44	H 2	GOOD! JUMPER by BEY,TYLER
12:49	GOOD! FT by EDWARDS,ROB	46-45	H 1	
12:16		48-45	H 3	GOOD! DUNK by BEY,TYLER
12:05	GOOD! 3PTR by LAWRENCE,KIMANI	48-48	T	
11:20		51-48	H 3	GOOD! 3PTR by SIEWERT,LUCAS
10:57	GOOD! 3PTR by LAWRENCE,KIMANI	51-51	T	
10:31		52-51	H 1	GOOD! FT by SCHWARTZ,D'SHAWN
09:59		54-51	H 3	GOOD! LAYUP by WRIGHT,MCKINLEY [PNT]
09:05		56-51	H 5	GOOD! JUMPER by BEY,TYLER
07:01	GOOD! 3PTR by MARTIN,REMY	56-54	H 2	
06:26		59-54	H 5	GOOD! 3PTR by GATLING,SHANE
06:09	GOOD! LAYUP by CHEATHAM,ZYLAN	59-56	H 3	
05:52		60-56	H 4	GOOD! FT by WRIGHT,MCKINLEY
05:52		61-56	H 5	GOOD! FT by WRIGHT,MCKINLEY
04:38		62-56	H 6	GOOD! FT by GATLING,SHANE
04:38		63-56	H 7	GOOD! FT by GATLING,SHANE
04:10	GOOD! DUNK by DORT,LUGUENTZ	63-58	H 5	
02:52		66-58	H 8	GOOD! 3PTR by WRIGHT,MCKINLEY
02:31	GOOD! 3PTR by LAWRENCE,KIMANI	66-61	H 5	
02:05		68-61	H 7	GOOD! LAYUP by WRIGHT,MCKINLEY [PNT]
00:58		70-61	H 9	GOOD! DUNK by BEY,TYLER [FB]
00:49	GOOD! DUNK by CHEATHAM,ZYLAN	70-63	H 7	
00:43		71-63	H 8	GOOD! FT by GATLING,SHANE
00:43		72-63	H 9	GOOD! FT by GATLING,SHANE
00:40	GOOD! FT by DORT,LUGUENTZ	72-64	H 8	
00:40	GOOD! FT by DORT,LUGUENTZ	72-65	H 7	
00:33		73-65	H 8	GOOD! FT by WRIGHT,MCKINLEY [FB]
00:33		74-65	H 9	GOOD! FT by WRIGHT,MCKINLEY [FB]
00:33	GOOD! FT by DORT,LUGUENTZ	74-66	H 8	
00:28	GOOD! FT by EDWARDS,ROB [FB]	74-67	H 7	
00:27		75-67	H 8	GOOD! FT by BEY,TYLER
00:21		76-67	H 9	GOOD! FT by BEY,TYLER
00:21		77-67	H 10	GOOD! FT by BEY,TYLER
00:15	GOOD! 3PTR by DORT,LUGUENTZ	77-70	H 7	
00:03	GOOD! 3PTR by CHEATHAM,ZYLAN	77-73	H 4	

**Arizona St. 73, Colorado 77**



**Official Substitutions Log  
Arizona St. vs Colorado  
Period 1**

**February 14, 2019 at CU Events Center (Sox Walseth Court) - Boulder, Colo.**

VISITORS: Arizona St.	Time	Score	HOME: Colorado
0 DORT,LUGUENTZ			0 GATLING,SHANE
23 WHITE,ROMELLO			23 SIEWERT,LUCAS
45 CHEATHAM,ZYLAN			25 WRIGHT,MCKINLEY
1 MARTIN,REMY			1 BEY,TYLER
2 EDWARDS,ROB			31 SCHWARTZ,D'SHAWN
SUB OUT: 0 DORT,LUGUENTZ	16:17	4-6	
SUB IN: 14 LAWRENCE,KIMANI	16:17		
SUB OUT: 2 EDWARDS,ROB	16:17		
SUB IN: 35 CHERRY,TAESHON	16:17		
	15:57	4-6	SUB OUT: GATLING,SHANE
	15:57		SUB IN: BATTEY,EVAN
	15:57		SUB OUT: BEY,TYLER
	15:57		SUB IN: KOUNTZ,DAYLEN
SUB OUT: 45 CHEATHAM,ZYLAN	15:09	6-6	
SUB IN: 0 DORT,LUGUENTZ	15:09		
	14:10	8-6	SUB OUT: SCHWARTZ,D'SHAWN
	14:10		SUB IN: GATLING,SHANE
	14:10		SUB OUT: SIEWERT,LUCAS
	14:10		SUB IN: BEY,TYLER
SUB OUT: 23 WHITE,ROMELLO	13:14	11-8	
SUB IN: 32 LAKE,DE'QUON	13:14		
	12:18	13-10	SUB OUT: GATLING,SHANE
	12:18		SUB IN: SIEWERT,LUCAS
	12:18		SUB OUT: WRIGHT,MCKINLEY
	12:18		SUB IN: SCHWARTZ,D'SHAWN
SUB OUT: 1 MARTIN,REMY	12:00	13-10	
SUB IN: 2 EDWARDS,ROB	12:00		
	11:09	13-10	SUB OUT: KOUNTZ,DAYLEN
	11:09		SUB IN: WRIGHT,MCKINLEY
SUB OUT: 0 DORT,LUGUENTZ	11:09		
SUB IN: 1 MARTIN,REMY	11:09		
SUB OUT: 14 LAWRENCE,KIMANI	11:09		
SUB IN: 45 CHEATHAM,ZYLAN	11:09		
	09:23	16-14	SUB OUT: BATTEY,EVAN
	09:23		SUB IN: STRATING,ALEXANDER
SUB OUT: 35 CHERRY,TAESHON	09:23		
SUB IN: 0 DORT,LUGUENTZ	09:23		
	09:00	16-14	SUB OUT: SIEWERT,LUCAS
	09:00		SUB IN: KOUNTZ,DAYLEN
SUB OUT: 32 LAKE,DE'QUON	09:00		
SUB IN: 23 WHITE,ROMELLO	09:00		
	06:08	23-19	SUB OUT: STRATING,ALEXANDER
	06:08		SUB IN: SIEWERT,LUCAS
	06:08		SUB OUT: BEY,TYLER
	06:08		SUB IN: BATTEY,EVAN
SUB OUT: 1 MARTIN,REMY	04:24	28-23	
SUB IN: 35 CHERRY,TAESHON	04:24		
SUB OUT: 2 EDWARDS,ROB	04:24		
SUB IN: 14 LAWRENCE,KIMANI	04:24		
SUB OUT: 45 CHEATHAM,ZYLAN	04:03	28-23	
SUB IN: 1 MARTIN,REMY	04:03		
	04:03		SUB OUT: SCHWARTZ,D'SHAWN
	04:03		SUB IN: BEY,TYLER
SUB OUT: 35 CHERRY,TAESHON	02:36	28-25	
SUB IN: 2 EDWARDS,ROB	02:36		
	02:36		SUB OUT: KOUNTZ,DAYLEN
	02:36		SUB IN: SCHWARTZ,D'SHAWN
	01:57	30-29	SUB OUT: BATTEY,EVAN
	01:57		SUB IN: STRATING,ALEXANDER
SUB OUT: 14 LAWRENCE,KIMANI	01:57		
SUB IN: 35 CHERRY,TAESHON	01:57		
SUB OUT: 0 DORT,LUGUENTZ	01:45	30-29	
SUB IN: 11 VALTONEN,ELIAS	01:45		
SUB OUT: 2 EDWARDS,ROB	01:09	32-29	
SUB IN: 32 LAKE,DE'QUON	01:09		

**Arizona St. 32, Colorado 32**

**Official Substitutions Log  
Arizona St. vs Colorado  
Period 2**

**February 14, 2019 at CU Events Center (Sox Walseth Court) - Boulder, Colo.**

VISITORS: Arizona St.	Time	Score	HOME: Colorado
0 DORT,LUGUENTZ			0 GATLING,SHANE
23 WHITE,ROMELLO			23 SIEWERT,LUCAS
45 CHEATHAM,ZYLAN			25 WRIGHT,MCKINLEY
1 MARTIN,REMY			1 BEY,TYLER
2 EDWARDS,ROB			31 SCHWARTZ,D'SHAWN
	19:18	-	SUB OUT: SCHWARTZ,D'SHAWN
	19:18		SUB IN: KOUNTZ,DAYLEN
SUB OUT: 2 EDWARDS,ROB	16:59	39-37	
SUB IN: 14 LAWRENCE,KIMANI	16:59		
	16:35	41-37	SUB OUT: GATLING,SHANE
	16:35		SUB IN: STRATING,ALEXANDER
	16:35		SUB OUT: BEY,TYLER
	16:35		SUB IN: SCHWARTZ,D'SHAWN
	14:53	44-39	SUB OUT: STRATING,ALEXANDER
	14:53		SUB IN: BEY,TYLER
	14:35	44-41	SUB OUT: KOUNTZ,DAYLEN
	14:35		SUB IN: GATLING,SHANE
	13:49	44-42	SUB OUT: WRIGHT,MCKINLEY
	13:49		SUB IN: KOUNTZ,DAYLEN
SUB OUT: 0 DORT,LUGUENTZ	13:49		
SUB IN: 32 LAKE,DE'QUON	13:49		
SUB OUT: 23 WHITE,ROMELLO	13:49		
SUB IN: 35 CHERRY,TAESHON	13:49		
SUB OUT: 45 CHEATHAM,ZYLAN	13:49		
SUB IN: 2 EDWARDS,ROB	13:49		
	13:18	44-44	SUB OUT: KOUNTZ,DAYLEN
	13:18		SUB IN: WRIGHT,MCKINLEY
	12:49	44-46	SUB OUT: GATLING,SHANE
	12:49		SUB IN: KOUNTZ,DAYLEN
SUB OUT: 32 LAKE,DE'QUON	12:49		
SUB IN: 23 WHITE,ROMELLO	12:49		
SUB OUT: 1 MARTIN,REMY	10:31	51-51	
SUB IN: 0 DORT,LUGUENTZ	10:31		
SUB OUT: 0 DORT,LUGUENTZ	09:32	51-54	
SUB IN: 1 MARTIN,REMY	09:32		
SUB OUT: 2 EDWARDS,ROB	09:32		
SUB IN: 45 CHEATHAM,ZYLAN	09:32		
	08:38	51-56	SUB OUT: KOUNTZ,DAYLEN
	08:38		SUB IN: GATLING,SHANE
	07:42	51-56	SUB OUT: BEY,TYLER
	07:42		SUB IN: STRATING,ALEXANDER
	05:52	56-60	SUB OUT: STRATING,ALEXANDER
	05:52		SUB IN: BEY,TYLER
SUB OUT: 23 WHITE,ROMELLO	05:52		
SUB IN: 0 DORT,LUGUENTZ	05:52		
SUB OUT: 35 CHERRY,TAESHON	04:38	56-61	
SUB IN: 2 EDWARDS,ROB	04:38		
	02:41	58-66	SUB OUT: GATLING,SHANE
	02:41		SUB IN: STRATING,ALEXANDER
	02:41		SUB OUT: SIEWERT,LUCAS
	02:41		SUB IN: KOUNTZ,DAYLEN
	02:30	61-66	SUB OUT: KOUNTZ,DAYLEN
	02:30		SUB IN: GATLING,SHANE
	02:30		SUB OUT: STRATING,ALEXANDER
	02:30		SUB IN: SIEWERT,LUCAS
SUB OUT: 2 EDWARDS,ROB	02:30		
SUB IN: 23 WHITE,ROMELLO	02:30		
	02:05	61-68	SUB OUT: GATLING,SHANE
	02:05		SUB IN: KOUNTZ,DAYLEN
	02:05		SUB OUT: SIEWERT,LUCAS
	02:05		SUB IN: STRATING,ALEXANDER
SUB OUT: 23 WHITE,ROMELLO	02:05		
SUB IN: 2 EDWARDS,ROB	02:05		
	01:49	61-68	SUB OUT: KOUNTZ,DAYLEN
	01:49		SUB IN: SIEWERT,LUCAS
	01:49		SUB OUT: STRATING,ALEXANDER
	01:49		SUB IN: GATLING,SHANE
SUB OUT: 2 EDWARDS,ROB	01:49		
SUB IN: 23 WHITE,ROMELLO	01:49		
	01:19	61-68	SUB OUT: GATLING,SHANE
	01:19		SUB IN: STRATING,ALEXANDER
	01:19		SUB OUT: SIEWERT,LUCAS
	01:19		SUB IN: KOUNTZ,DAYLEN
	01:04	61-68	SUB OUT: KOUNTZ,DAYLEN
	01:04		SUB IN: GATLING,SHANE
	01:04		SUB OUT: STRATING,ALEXANDER
	01:04		SUB IN: SIEWERT,LUCAS
SUB OUT: 23 WHITE,ROMELLO	00:49	61-70	
SUB IN: 2 EDWARDS,ROB	00:49		
	00:43	63-70	SUB OUT: GATLING,SHANE
	00:43		SUB IN: KOUNTZ,DAYLEN



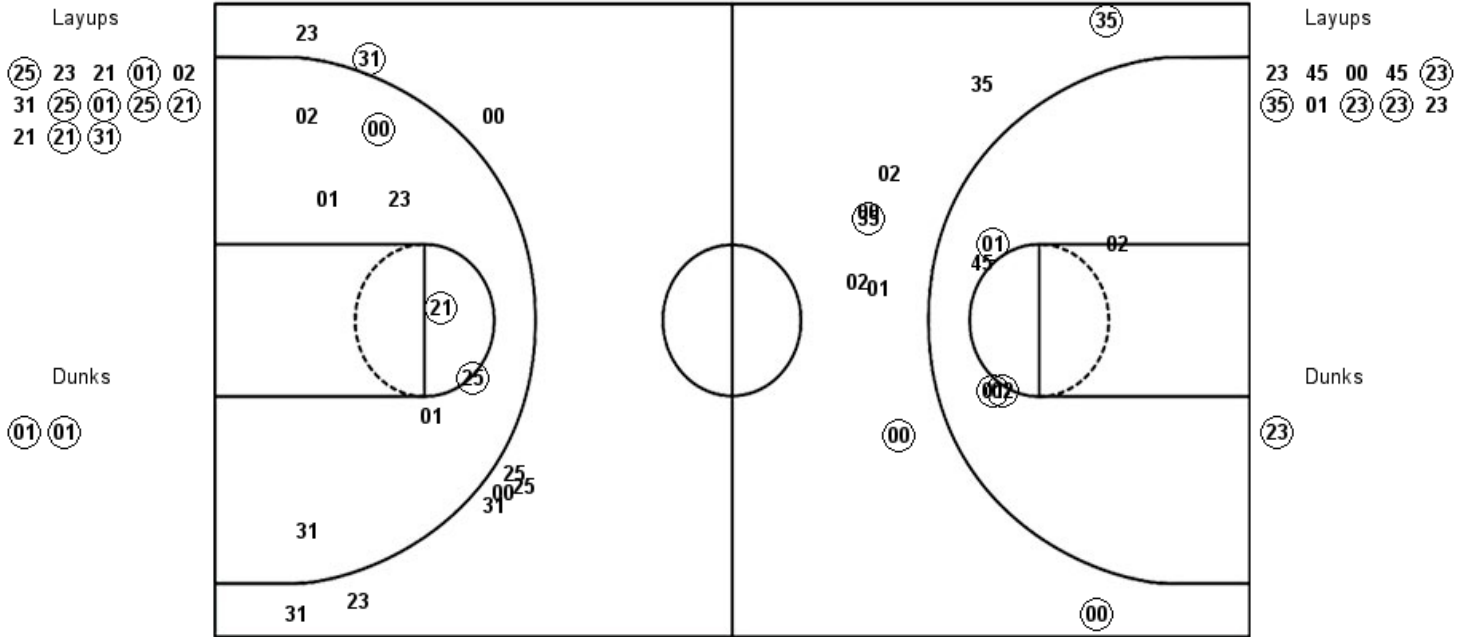
VISITORS: Arizona St.	Time	Score	HOME: Colorado
	00:40	65-72	SUB OUT: KOUNTZ,DAYLEN
	00:40		SUB IN: GATLING,SHANE
	00:33	65-74	SUB OUT: GATLING,SHANE
	00:33		SUB IN: KOUNTZ,DAYLEN
	00:28	67-74	SUB OUT: KOUNTZ,DAYLEN
	00:28		SUB IN: GATLING,SHANE
	00:27	67-75	SUB OUT: GATLING,SHANE
	00:27		SUB IN: KOUNTZ,DAYLEN

Arizona St. 73, Colorado 77

Official Shot Chart  
**Arizona St. vs Colorado**  
 PERIOD 1 Shots  
 February 14, 2019 at CU Events Center (Sox Walseth Court) - Boulder, Colo.

**Colorado**

**Arizona St.**

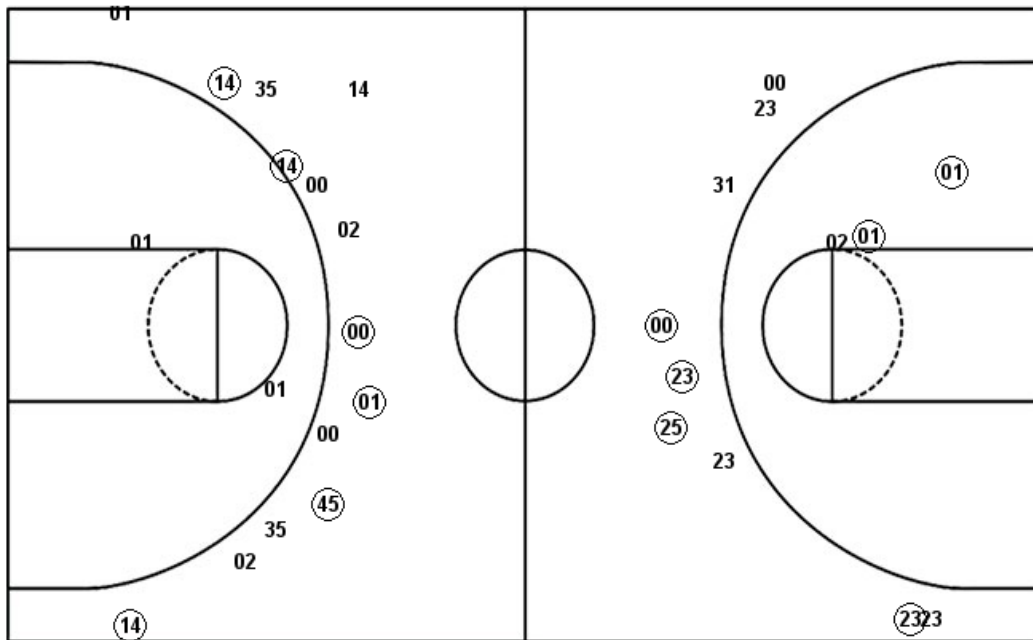


COL : Period 1	Made	Att	Pct
Layups	8	13	61.5
Dunks	2	2	100.0
2PT Field Goals	13	23	56.5
3PT Field Goals	1	9	11.1
<b>Total Field Goals</b>	<b>14</b>	<b>32</b>	<b>43.8</b>

ASU : Period 1	Made	Att	Pct
Layups	4	10	40.0
Dunks	1	1	100.0
2PT Field Goals	8	16	50.0
3PT Field Goals	4	9	44.4
<b>Total Field Goals</b>	<b>12</b>	<b>25</b>	<b>48.0</b>

**February 14, 2019 at CU Events Center (Sox Walseth Court) - Boulder, Colo.**

**Arizona St.**



00 00 45

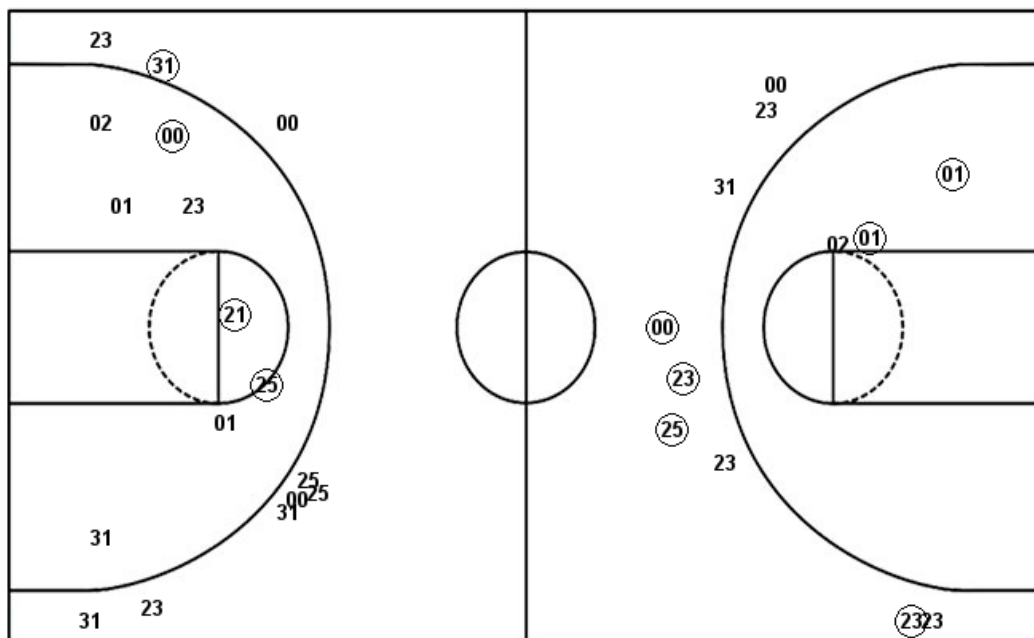
ASU : Period 2	Made	Att	Pct
Layups	4	15	26.7
Dunks	3	3	100.0
2PT Field Goals	7	20	35.0
3PT Field Goals	6	14	42.9
<b>Total Field Goals</b>	<b>13</b>	<b>34</b>	<b>38.2</b>



**Official Shot Chart**  
**Arizona St. vs Colorado**  
**Colorado Team Shots**  
**February 14, 2019 at CU Events Center (Sox Walseth Court) - Boulder, Colo.**

Layups

Dunks



Layups

(25) 23 21 (01) 02  
 31 (25) (01) (25) (21)  
 21 (21) (31) 01 01  
 (25) (02) 02 (25) (01)  
 (25) 31 25 (25)

Dunks

(01) (01) (01) (01)

COL : Period 1	Made	Att	Pct
Layups	8	13	61.5
Dunks	2	2	100.0
2PT Field Goals	13	23	56.5
3PT Field Goals	1	9	11.1
<b>Total Field Goals</b>	<b>14</b>	<b>32</b>	<b>43.8</b>

COL : Period 2	Made	Att	Pct
Layups	6	11	54.5
Dunks	2	2	100.0
2PT Field Goals	10	16	62.5
3PT Field Goals	4	9	44.4
<b>Total Field Goals</b>	<b>14</b>	<b>25</b>	<b>56.0</b>