

2023-24 SUN DEVIL WBB GAME NOTES

2023-24 Schedule/Results (3-1, 0-0 Pac-12)

DAY & DATE	OPPONENT	TIME/RESULT
MON., NOV. 6	UTSA (ASU Live Stream)	W, 70-55
FRI., NOV. 10	MONTANA STATE (ASU Live Stream)	W, 75-62
MON., NOV. 13	SAN FRANCISCO (ASU Live Stream)	W, 77-69
<u>Pac-12/SWAC Legacy Series</u>		
Thurs., Nov. 16	at Grambling State	L, 67-70
SUN., NOV. 19	IDAHO STATE (ASU Live Stream)	6 P.M. MST
<u>Paradise Jam (Nov. 23-25/ St. Thomas, U.S. Virgin Islands)</u>		
Thurs., Nov. 23	vs. Texas	6 p.m. MST/9 p.m. AST
Fri., Nov. 24	vs. South Florida	3:45 p.m. MST/6:45 p.m. AST
Sat., Nov. 25	vs. High Point	3:45 p.m. MST/6:45 p.m. AST
<u>BRIANN JANUARY CLASSIC DEC. 1-2/TEMPE, ARIZ.</u>		
Fri., Dec. 1	Xavier vs Temple	4 p.m. MST
FRI., DEC. 1	ASU VS. PACIFIC (Pac-12 Networks)	7 P.M. MST
Sat., Dec. 2	Temple vs Pacific	1 p.m. MST
SAT., DEC. 2	ASU VS. XAVIER (ASU Live Stream)	4 P.M. MST
FRI., DEC. 8	GRAND CANYON (ASU Live Stream)	1 P.M. MST
SUN., DEC. 17	ARIZONA* (Pac-12 Networks)	5 P.M. MST
<u>Jerry Colangelo's 2023 Hall of Fame Series, Phoenix, Ariz.</u>		
Wed., Dec. 20	vs. Fresno State	12 p.m. MST
SAT., DEC. 30	SANTA CLARA (ASU Live Stream)	1 P.M. MST
FRI., JAN. 5	UTAH* (Pac-12 Networks)	7 P.M. MST
SUN., JAN. 7	COLORADO* (Pac-12 Networks)	12 P.M. MST
Fri., Jan. 12	at Oregon* (Pac-12 Networks)	8 p.m. MST/7 p.m. PST
Sun., Jan. 14	at Oregon State* (Pac-12 Networks)	1 p.m. MST/12 p.m. PST
Fri., Jan. 19	at Washington State* (Pac-12 Networks)	8 p.m. MST/7 p.m. PST
Sun., Jan. 21	at Washington* (Pac-12 Networks)	1 p.m. MST/12 p.m. PST
FRI., JAN. 26	STANFORD* (Pac-12 Networks)	6 P.M. MST
SUN., JAN. 28	CAL* (Pac-12 Networks)	12 P.M. MST
Sun., Feb. 4	at Arizona* (Pac-12 Networks)	12 p.m. MST
Fri., Feb. 9	at USC* (Pac-12 Networks)	8 p.m. MST/7 p.m. PST
Sun., Feb. 11	at UCLA* (Pac-12 Networks)	1 p.m. MST/12 p.m. PST
FRI., FEB. 16	WASHINGTON* (Pac-12 Networks)	6 P.M. MST
SUN., FEB. 18	WASHINGTON STATE* (Pac-12 Networks)	12 P.M. MST
Fri., Feb. 23	at Cal* (Pac-12 Networks)	8 p.m. MST/7 p.m. PST
Sun., Feb. 25	at Stanford* (Pac-12 Networks)	1 p.m. MST/12 p.m. PST
THURS., FEB. 29	UCLA* (Pac-12 Networks)	7 P.M. MST
SAT., MAR. 2	USC* (Pac-12 Networks)	12 P.M. MST
<u>2024 Pac-12 Women's Basketball Tournament</u>		
Mar. 6, 7, 8, 10	TBD	TBD

Home games (listed in BOLD CAPS) played at Desert Financial Arena.

* - Pac-12 Game

Game No. 5

Arizona State

(3-1)

vs.

Idaho State

(2-1)

Sunday, November 19th, 2023

6 p.m. MST • Desert Financial Arena • Tempe, Ariz..

ASU Live Stream-2 • KDUS AM 1060

UP NEXT

The Sun Devil women's basketball team plays its fourth home game of the season – its last in the month of November – when it hosts Idaho State on Sunday (6 p.m. MST) at Desert Financial Arena.

The Sun Devils (3-1) are coming off their first loss of the season, 70-67 at Grambling State on Thursday. Jaddan Simmons and Kadidia Toure scored 18 points each to lead ASU. Simmons scored 10 of her 14 second half points in the fourth quarter, including a 3-pointer with 38 seconds remaining that tied the score at 67-67. Simmons' triple capped an 18-7 ASU run that Simmons started with a jumper to get ASU within single-digits, 60-51 with 8:48 remaining. Trailing by as many as 17 points early in the third quarter, the Sun Devils were a defensive stop away from getting a chance to win the game in regulation or overtime. After scoring only seven points the first nine-plus minutes of the final quarter, the Tigers were able to churn out one final field goal – a 3-pointer by DeMya Young with 11 seconds remaining – that turned out to be the game-winner after ASU was unable to send the game to overtime.

After Sunday's game, ASU will conclude the opening month of play with a trip to the Virgin Islands where it will play three games in three days at the Paradise Jam: vs. No. 11 Texas (Thanksgiving Day), vs. USF (Friday), vs. High Point (Saturday).

WATCH/LISTEN

Sunday's game can be seen via ASU Live Stream-2. The game can also be heard on KDUS AM 1060 (pregame coverage starts at 5:30 p.m). Veteran broadcaster and the state of Arizona's 2010 & 2019 Broadcaster of the Year Jeff Munn is in his 20th season as the voice of ASU women's basketball.

RANKINGS OF NOTE (AS OF NOV. 18)

- As a team, ASU leads the Pac-12 (23rd in the nation) in free throws per game (25.5), is 2nd (34th in the nation) in free throws made per game (17.8) and 4th in the league in turnover margin (+4.3).
- Jaddan Simmons leads or is tied for the Pac-12 lead in free throws made (27/5th in the nation) & attempted (30/7th in the nation), assist-to-turnover ratio (5.0/18th in the nation) and minutes per game (36.5/34th in the nation), is tied for 4th in the league in steals per game (3.0), tied for 7th in free throw percentage (90.0), 8th in 3-point FG pct. (55.6), 13th in assists per game (3.8) and tied for 14th in scoring (16.0 ppg).
- Trayanna Crisp is 6th in the Pac-12 in minutes per game, 10th in steals per game (2.3) and tied for 12th in 3-pointers per game (2.0).
- Kadidia Toure is tied for 10th in the Pac-12 in rebounds per game (8.0) & offensive rebounds per game (3.0) & tied for 19th in scoring (14.8 ppg).
- Journey Thompson is 9th in the Pac-12 in offensive rebounds per game (3.3).

SERIES NOTES VERSUS IDAHO STATE

ASU has won all four of its previous meetings vs. Idaho State. All four games have taken place in Tempe with the most recent meeting taking place in December of 2019 when the Sun Devils had to go to overtime to beat Idaho State, 74-69.

SUN DEVIL

W O M E N ' S B A S K E T B A L L

2023-24 SUN DEVIL WBB GAME NOTES

SUN DEVIL WBB 2023-24 QUICK FACTS

School Information

Location	Tempe, Ariz.
Founded	1885
Enrollment.....	103,410
Nickname	Sun Devils
Colors	Maroon and Gold
Conference	Pac-12
Arena (Capacity)	Desert Financial Arena (14,100)
President	Dr. Michael Crow
Interim Athletics Director	Jim Rund
WBB Administrators	Christina Wombacher (Sr. Associate AD/SWA)
.....	Natesh Rao (Sr. Associate AD)

Staff

Head Coach	Natasha Adair (2nd season)
Record at ASU (seasons)	11-21 (2nd season)
Career record (seasons)	178-164 (12th season)
Associate Head Coach	Darrell Mosley (2nd season)
Assistant Coach/Recruiting Coordinator ...	Mykala Walker (2nd season)
Assistant Coach	Camille Collier (2nd season)
Special Asst. to the Head Coach.....	Yvonne Sanchez (1st season)
Director of Operations	Carter Caplan (2nd season)
Asst. Director of Operations.....	Lizzie Oleary (2nd season)

Media Relations Contacts

Associate SID	Steve Rodriguez
Cell/Email	480-254-2489 / steve.rodriguez@asu.edu
Sr. Associate AD, Media Relations	Doug Tammaro
Cell/Email	480-734-7795 / tammaro@asu.edu

Returns

#2	Jaddan Simmons	G	5-9	Sr.
#4	Trayanna Crisp	G	5-8	So.
#11	Maggie Besselink	G/F	6-3	Sr.
#12	Treasure Hunt	G	6-2	Sr.
#22	Journey Thompson	F	6-3	So.
#30	Morasha Wiggins	F	6-0	Jr.
#44	Isadora Sousa	G	6-0	Grad.

Newcomers

#1	Kadidia Toure	F	6-3	So.
#10	Marina Radocaj	G/F	6-2	Fr.
#13	Sandra Magolico	F	6-2	Jr.
#20	Kiley Sours-Miller	C	6-4	Fr.
#21	Hanna Miller	F	6-2	So.
#23	Jalyn Brown	G	6-1	So.
#24	Mallory Miller	F	6-4	Fr.
#25	Adison Novosel	G	5-11	Jr.

Will miss 2023-24 due to injury (both returners)

#0	Jaylah Robinson	G	5-11	Fr.
#3	Tyi Skinner	G	5-5	Jr.

Pronunciation Guide

Natasha Adair – A-dare
Maggie Besselink – Bessel-ink
Jalyn Brown – Jay-lynn
Trayanna Crisp – Tray-on-nah
Sandra Magolico – Sahn-dra Mag-oh-leek-oh
Adison Novosel – No-vuh-sell
Marina Radocaj – Maude-E-nuh Rahd-oh-chai
Jaylah Robinson – Jay-luh
Jaddan Simmons – Jade-en
Tyi Skinner – Tie
Isadora Sousa – So-za
Kadidia Toure – kuh-DEE-shuh TORE-ay
Morasha Wiggins – more-AH-shuh

STATE OF PLAY

- ASU started the season 3-0 after home wins over UTSA (70-55 on Nov. 6), Montana State (75-62 on Nov. 10) and San Francisco (77-69 on Nov. 13).
- In the first half of their three wins, ASU has averaged 45.3 points & hit 49.5 pct of its shots. In the win vs. UTSA, ASU tied last season's highest point total in a half on its way to a 49-23 halftime lead. Against Montana State, ASU scored 30 points in the first quarter, representing the third time it has scored 30 or more points in a quarter under head coach Natasha Adair. In Thursday's loss, it scored 32 and shot 38.4 pct.
- ASU is averaging 21.8 ppg off the opposition's turnovers. It scored a season-high 31 points off turnovers at Grambling State (Nov. 16).
- ASU has allowed 11 or fewer points in a quarter seven times.
- After Montana State cut a 20-point deficit to four with seven minutes remaining in the fourth quarter, ASU answered with a 10-0 run. They allowed the Bobcats to shoot just 17 percent (2-12) in the fourth quarter.

WHAT TO LOOK FOR

- In the last three games, Kadidia Toure is averaging 19.0 ppg and 9.3 rpg. She posted her first career double-double with career highs in points (22) and rebounds (14) to go with 3 steals vs. San Francisco (Nov. 13). She currently leads ASU in FG pct (53.3).
- Jaddan Simmons has scored in double figures in 26 times in 31 games going back to the start of last season. Simmons needs 91 more points to reach 1000 for her career.
- Four players have started every game: Jaddan Simmons, Trayanna Crisp, Maggie Besselink and Toure. Jalyn Brown (13.5 ppg/No. 3 on the team in ppg) has missed each of ASU's last two games. Starting in her place was in both contests was Journey Thompson. Against Montana State (Nov. 10), Thompson came off the bench to score 13 points and grab 12 rebounds for ASU's first double-double of the season. She added 12 points in her first start of the season vs. San Francisco.
- Trayanna Crisp has scored in double figures in three of ASU's four games. She has accounted for a season-high 3 steams in each of ASU's last two games.

WELCOME BACK

Maggie Besselink and Morasha Wiggins have both provided the Sun Devils with significant contributions this season. What distinguishes them from the other returning players? Both missed all of last season due to injury.

Besselink, who had not played in a game since Feb. 6, 2022, was not only in the starting lineup in the season opener, but also played a major role in igniting ASU's offense after hitting back-to-back triples in the first quarter vs. UTSA. She scored 11 points and grabbed a game-high 10 rebounds to post her second career double-double at Grambling State on Nov. 16.

Wiggins made her Sun Devil debut in ASU's win over San Francisco (Nov. 13), scoring 8 points and hitting all 4 of her free throws. She is averaged 23.3 minute per game.

SCHEDULE NOTES

- Games against four teams that qualified for postseason play last season highlight ASU's 2023 non-conference schedule.
- The Sun Devils will play 17 home games: eight non-conference and nine Pac-12 contests. The Sun Devils, who will open the season on Mon., Nov. 6 at home vs. UTSA, will commence Pac-12 play – at home vs. Arizona on Dec. 17 – while still in the midst of playing their non-conference schedule. ASU's non-conference slate will conclude on Dec. 30 at home vs. Santa Clara.
- ASU will play 2023 NCAA Tournament participants Texas and South Florida and 2023 WNIT entry High Point at the Paradise Jam.
- The Pac-12 led all conferences with six teams in the AP Preseason Top 25: No. 4 UCLA, No. 5 Utah, No. 15 Stanford, No. 20 Colorado, No. 21 USC and No. 24 Washington State.
- The Sun Devils will appear on Pac-12 Networks at least 20 times during the 2023-24 campaign.

SUN DEVIL

W O M E N ' S B A S K E T B A L L

2023-24 SUN DEVIL WBB GAME NOTES

ALL-PAC-12 STANDOUT TYI SKINNER TO MISS 2023-24 SEASON

Although the Sun Devil women's basketball team's overall health is a 180-degree difference from last season, the squad was dealt a tremendous blow when Natasha Adair announced Oct. 4, 2023 that senior guard Tyi Skinner will miss the 2023-24 season due to a knee injury.

Skinner, who last season earned All-Pac-12 honorable mention honors from the league's coaches and All-Pac-12 recognition from media who cover the league, quickly established herself as one of top scorers in the Pac-12 and one of the most exciting players in the nation to watch in her first season in Tempe.

In 2022-23, Skinner scored 20 or more points 15 times, including a career-high 29 points on two occasions. A starter in all 28 games, Skinner went on to average 19.3 points per game, the most by a Sun Devil since the 1988-89 season. She concluded her first campaign in the Maroon and Gold among the leaders in the Pac-12 in points per game (19.3/2nd/27th in the nation), 3-pointers per game (2.43 per game/2nd), minutes per game (36.59/3rd/29th in the nation), free throws made (79/3rd) and attempted (91/4th), steals per game (1.71/5th), 3-point FG percentage (34.7/6th) and free throw percentage (78.1/8th).

PLAYER NOTES

#1 • Kadidia Toure • F • 6-3 • So. • Silver Spring, Md.

- Transferred to ASU in 2023 after playing at James Madison as a freshman.
- Has started all 4 games and is averaging 19.0 ppg/9.3 rpg in the last 3 games.
- Posted her first career double-double with career highs in points (22) and rebounds (14) to go with 3 steals vs. San Francisco (Nov. 13).
- Four-year varsity player for Our Lady of Good Counsel (Olney, Md.). As a senior in 2022, the league's player of the year averaged 14 points, 13 rebounds and four blocks on her way to WCAC Player of the Year honors and first-team All-Met recognition.

#2 • Jaddan Simmons • G • 5-9 • Sr. • Houston, Texas

- Has started all 81 games she's played in her career.
- Currently leads or is tied for the Pac-12 lead in FTs made (27/5th in the nation) & attempted (30/7th in the nation), assist-to-TO ratio (5.0/18th in the nation) and minutes per game (36.5), is tied for 4th in the league in steals per game (3.0), tied for 7th in FT pct (90.0), 8th in 3-point FG pct. (55.6), 13th in assists per game (3.8) and tied for 14th in scoring (16.0 ppg).
- Has scored in double figures in 26 times in 31 games going back to the start of last season. Currently with 909 points, needs 91 points to reach 1,000 career points
- Was named 2022 Preseason Pac-12 Honorable Mention and at the conclusion of the season was named Pac-12 All-Defensive Team HM.

#3 • Tyi Skinner • G • 5-5 • Sr. • Washington, D.C.

- Was announced on October 4, 2023 that Tyi Skinner will miss the 2023-24 season due to a knee injury.
- Made an immediate impact in her first season as a Sun Devil, earning All Pac-12 recognition from media that cover the league and Pac-12 HM honors from the league's coaches for a season in which she started all 28 games and averaged the most points per game (19.2) in a season since 1988-89.
- Scored in double figures in 25/28 games, including 15 games w/20 or more points, and finished 2nd in the Pac-12 and 27th in the nation in ppg season.

#4 • Trayanna Crisp • G • 5-8 • So. • Goodyear, Ariz.

- In her first season wearing the Maroon and Gold, Crisp appeared in all 28 games, starting five of them.
- Has started every game this season and is averaging 10.0 ppg.
- Leads the team with eight 3-pointers and is 2nd on the team in assists (3.0 apg) and steals (2.3 spg).

SCORING HIGHS / LOWS BY ASU IN 2022-23

Most points (Game)

- 83 - @New Mexico - 11.20.22
- 82 - vs. Prairie View - 12.17.22
- 80 - @Grand Canyon - 11.30.22

Fewest points (Game)

- 48 - @Oregon - 2.25.23
- 49 - @USC - 2.3.23
- 53 - vs. Washington - 1.29.23

Most points (Quarter)

- 35 - @Grand Canyon (4th) - 11.30.22
- 30 - @Oregon St. (4th) - 2.23.23
- 26 - vs. Stanford (4th) - 2.12.23

Fewest points (Quarter)

- 3 - vs. Cal (3rd) - 2.10.23
- 6 - vs. Utah (2nd) - 2.19.23
- 7 - vs. Oregon St. (1st) - 1.8.23

Most points (1st half)

- 46 - @Montana State - 11.15.22
- 40 - (2x) last vs. PVAM - 12.17.22
- 36 - @New Mexico - 11.20.22

Fewest points (1st half)

- 19 - (2x) last vs. Washington St. - 1.27.23
- 22 - (2x) last vs. Oregon - 2.25.23
- 23 - vs. Stanford 2.12.23

Most points (2nd half)

- 49 - @Oregon St. - 2.23.22
- 48 - @Grand Canyon - 11.30.22
- 42 - vs. PVAM - 12.17.22

Fewest points (2nd half)

- 25 - vs Washington - 1.29.23
- 26 - (2x) last @Oregon - 2.25.23
- 27 - (3x) last @USC - 2.3.23

SCORING HIGHS / LOWS BY OPPONENT IN 2022-23

Most points (Game)

- 101 - @Stanford - 12.31.22
- 96 - vs. Stanford - 2.12.23
- 88 - vs. Massachusetts - 12.2.22

Fewest points (Game)

- 49 - vs. Grambling - 11.11.22
- 55 - vs. Washington - 1.29.23
- 61 - (2x) last vs. Washington St. - 1.27.23

Most points (Quarter)

- 30 - (2x) last @Arizona (3rd) - 12.29.22
- 29 - vs. Stanford (1st) - 2.12.23
- 26 - (3x) last vs. Stanford (4th) - 2.12.23

Fewest points (Quarter)

- 6 - vs. UCLA (4th) - 3.1.23
- 7 - vs. Montana St. (1st) - 11.15.22
- 10 - (2x) last vs. Washington (2nd) - 1.29.23

Most points (1st half)

- 54 - (2x) last vs. Stanford - 2.12.23
- 51 - @Stanford - 12.31.22
- 43 - vs. Arizona - 1.23.23

Fewest points (1st half)

- 22 - vs. Grambling - 11.11.22
- 24 - vs Washington - 1.29.23
- 27 - vs. Montana St. - 11.15.22

Most points (2nd half)

- 54 - vs. Notre Dame - 11.26.22
- 50 - @Stanford - 12.31.22
- 47 - @UCLA - 2.5.23

Fewest points (2nd half)

- 23 - vs. UCLA - 3.1.23
- 27 - vs. Grambling - 11.11.22
- 28 - (2x) last vs. Colorado - 2.17.23

#10 • Marina Radocaj • G/F • 6-2 • Fr. • Richmond, British Columbia

- Talented standout, who earned spots on Canada's U16 and U17 teams.
- Hit one of ASU's nine 3-pointers in its season-opening win over UTSA (Nov. 6).
- Member of the 2021 U16 Canadian Team that placed second at FIBA Americas. Radocaj averaged 9.2 points and 5.0 rebounds per game in the six games she played (all starts).
- Played in 5 games at the 2022 FIBA U17 Women's Basketball World Cup.

#11 • Maggie Besselink • G/F • 6-3 • Sr. • Kingston, Ontario

- After missing the 2022-23 season due to injury, made her return to the floor in 2023-24.
- Besselink, who had not played in a game since Feb. 6, 2022, was not only in the starting lineup in the season opener, but also played a major role in igniting ASU's offense after hitting back-to-back triples in the first quarter vs. UTSA. She scored 11 points and grabbed a game-high 10 rebounds to post her second career double-double at Grambling State on Nov. 16.

SUN DEVIL

W O M E N ' S B A S K E T B A L L

2023-24 SUN DEVIL WBB GAME NOTES

#12 • Treasure Hunt • G • 6-2 • Sr. • Chattanooga, Tenn.

- In her first season as a Sun Devil, played & started in 27 games and averaged 34.1 minutes (third on team), 11.3 points and 6.1 rebounds. Also made 28 3-pointers and had 22 blocks and 25 steals. Had career-high 24 points vs. Arizona on Jan. 22, 2023, and had career-best 15 rebounds at New Mexico on Nov. 20.
- Has played in every game and is currently averaging 5.3 ppg & 3.0 rpg.
- Posted season highs in points (9) and rebounds (5) in win vs. Montana State (Nov. 10).
- Including two seasons at Kentucky, has started 57 of the 76 games.

#13 • Sandra Magolico • F • 6-2 • Jr. • Maputo, Mozambique

- Transferred to ASU after playing two seasons at New Mexico CC.
- Has played in every game this season.
- In 2019, competed for the Mozambique national team, playing in nine games and averaged 11.0 minutes per game.
- Started 28 of 30 games in 2022-23, leading New Mexico JC to a 26-6 record and a Round of 16 finish in the NJCAA WBB Championship.

#20 • Kiley Sours-Miller • C • 6-3 • Fr. • Surprise, Ariz.

- Playing for Dream City Christian, as a senior was ranked No. 10 in The Arizona Republic's Elite Girls 50 players in 2022-23.
- Scored more than 1,000 points in her career and led Dream Christian to the 2023 Girls Open Division state title.
- Averaged a double-double after playing first two seasons at Peoria Centennial, junior season at Phoenix Greenway and senior season at Glendale Dream City Christian.

#21 • Hanna Miller • F • 6-2 • So. • Aberdeen, S.D.

- The sister of incoming freshman Sun Devil Mallory Miller, transferred to ASU from Dodge City CC (Dodge City, Kan.) where she played in 23 games (3 starts) and averaged 11.3 minutes per game.
- As a senior in HS, teamed with Mallory to help lead Aberdeen Christian to a 21-5 record and a berth in the Class B girls basketball tournament.

#22 • Journey Thompson • F • 6-3 • So. • McMurray, Pa.

- Played in 13 games (three starts) as a freshman before having season prematurely come to an end due to injury.
- Has played in every game and has started the last two contests.
- Scored five points, grabbed four rebounds and had two steals in ASU's season-opening win over UTSA (Nov. 6) and followed that with 13 points and 12 rebounds for ASU's first double-double of the season in win vs. Montana State (Nov. 10).
- Made first start of the season and scored 12 points (3-5 FGs, 6-7 FTs) and grabbed five rebounds in win over San Francisco (Nov. 13).

#23 • Jalyn Brown • G • 6-1 • So. • Baltimore, Md.

- Transferred to ASU in 2023 after playing freshman season at Louisville. Played in seven contests for Louisville squad that went on to conclude its season in the Elite Eight of the 2023 NCAA Tournament.
- Had tremendous Sun Devil debut: Scored 16 points and grabbed 4 rebounds in ASU's season-opening win vs. UTSA (Nov. 6). Followed that with an 11-point outing vs. Montana State (Nov. 10).
- Missed games vs. San Francisco (Nov. 13) & at Grambling State (Nov. 16).

#24 • Mallory Miller • F • 6-4 • Fr. • Aberdeen, S.D.

- Has played in three contests and is averaging 9.7 minutes per game.
- The sister of ASU sophomore guard Hanna Miller, Mallory was named a KELOLAND Media Group All-Star Girls Basketball Player of the Year finalist and was nominated Miss Basketball 2023 for the state of South Dakota after posting per-game averages of 18.5 points, 9.5 rebounds and 2.7 assists.
- Led Wolsey-Wessington to a 22-3 record an appearance in the state semifinals (its first appearance in the state tournament) and the state's top

seed in 2023.

- As a junior, teamed with sister Hanna to help Aberdeen Christian to a 21-5 record and a berth in the Class B girls basketball tournament.

#25 • Adison Novosel • G • 5-11 • Jr. • Richfield, Ohio

- Transferred to ASU in 2023 after playing first two seasons at Saint Francis University where she appeared in 35 contests (25 starts).
- Played in season-opening win vs. UTSA (Nov. 6).
- After appearing in seven games off the bench as a freshman, started 25 of 28 games in 2022-23.
- As a sophomore, led Saint Francis with 29 triples and posted career highs in points (12) and 3-pointers (4) vs. Central Connecticut State (Jan. 28). Also pulled down a career-high six rebounds twice and snared a career-high three steals vs. Coppin State (Nov. 7).

#30 • Morasha Wiggins • G • 6-0 • Jr. • Kalamazoo, Mich.

- Transferred to ASU after playing her freshman season (2021-22) at North Carolina.
- Missed the 2022-23 season after incurring injury in weeks leading up to start of the season.
- Played 23 minutes and scored 8 points and hit all four FTs in her Sun Devil debut vs. San Francisco (Nov. 13).
- Ranked 18th in the ESPNW Class of 2021 rankings, Wiggins was expected to be an impact player for the Sun Devils before suffering a preseason injury that forced her to miss the entire 2022-23 campaign.

#44 • Isadora Sousa • G • 6-0 • Grad. • Sao Paulo, Brazil

- Has played in 30 games with seven starts in her two seasons with the Sun Devils.
- Has yet to play due to injury.
- Has worked hard to come back from injury each of last two seasons and has proved to be an effective performer when on the floor.
- In 2022-23, scored a career high-tying points in consecutive games (at Stanford/Dec. 31 and at Cal/Jan 2) and had the second highest field goal percentage on the team, shooting 44.8%.

RECAPPING THE 2022-23 SEASON

Despite a spate of unlucky injuries to key personnel, the Sun Devils had several noteworthy accomplishments during Adair's inaugural season in Tempe. The accomplishments included...

- Starting 5-0 for the first time since 2002-03.
- Finishing the season No. 2 in the Pac-12 and 10th in the nation in fewest turnovers per game (12.3). Only ASU's 2017-18 squad averaged fewer turnovers per game (11.7) in a season.
- Even with all its injuries, ASU nearly pulled off three Top 25 upsets in the season's final five games: vs. No. 21 Colorado (62-70), vs. No. 4 Utah (69-74) and vs. No. 19 UCLA (70-81-OT) in the first round of the Pac-12 Tournament. After trailing the Bruins by as many as 19 points in the third quarter, the Sun Devils staged a furious rally to take a two-point lead in regulation before falling in overtime. The win would have been ASU's biggest comeback in school history.
- In their 75-73 win at Oregon State, the Sun Devils overcame their second-largest deficit in school history (17 points). The victory was also No. 175 of Adair's career.
- Individually, Sun Devil guards Jaddan Simmons (Pac-12 All-Defense honorable mention) and Tyi Skinner (All-Pac-12 honorable mention) comprised one of the most talented backcourts in the country. Both players earned Pac-12 honors as voted on by the league's head coaches. Skinner, who finished second in the Pac-12 and 27th in the nation in scoring (19.2 ppg), was also named to the media's 15-member All-Pac-12 team.

SUN DEVIL

W O M E N ' S B A S K E T B A L L

HEAD COACH NATASHA ADAIR



- On March 27, 2022, Natasha Adair was introduced as the new head coach of Sun Devil Women's Basketball.
- Adair, who brought 10 seasons of head coaching experience to ASU, came to Tempe after five seasons at Delaware where she compiled a 95-58 record, including a 48-13 record in her final two seasons.
- In 2021-22, Adair's final season at Delaware, the Blue Hens captured the program's third Colonial Athletic Association tournament title and earned their first trip to the NCAA Tournament in nearly a decade.
- In 2021, Adair was named the CAA's Coach of the Year for a season in which she guided Delaware to its first regular season conference championship since 2013.
- Prior to her five seasons at Delaware, Adair also had successful head coaching stints at College of Charleston (two seasons) and Georgetown (three seasons).
- Despite a spate of unlucky injuries to key personnel, the Sun Devils had several noteworthy accomplishments during Adair's inaugural season in Tempe, including: Starting 5-0 for the first time since 2002-03; Finishing the season No. 2 in the Pac-12 and 10th in the nation in fewest turnovers per game (12.3/only ASU's 2017-18 squad averaged fewer turnovers per game (11.7) in a season; Even with all its injuries, ASU nearly pulled off three Top 25 upsets in the season's final five games: vs. No. 21 Colorado (62-70), vs. No. 4 Utah (69-74) and vs. No. 19 UCLA (70-81-OT) in the first round of the Pac-12 Tournament; After trailing the Bruins by as many as 19 points in the third quarter, the Sun Devils staged a furious rally to take a two-point lead in

regulation before falling in overtime. The win would have been ASU's biggest comeback in school history; In their 75-73 win at Oregon State, the Sun Devils overcame their second-largest deficit in school history (17 points). The victory was also No. 175 of Adair's career; Individually, Sun Devil guards Jaddan Simmons (Pac-12 All-Defense honorable mention) and Tyi Skinner (All-Pac-12 honorable mention) comprised one of the most talented backcourts in the country; Both players earned Pac-12 honors as voted on by the league's head coaches. Skinner, who finished second in the Pac-12 and 27th in the nation in scoring (19.2 ppg), was also named to the media's 15-member All-Pac-12 team.

- In addition to the 2021-22 team (NCAA Tournament), Adair's leadership while at Delaware was instrumental in the 2017-18 (WNIT) and 2020-21 (WNIT) squads earning postseason appearances. Playing a big role in Delaware's success in Adair's final two seasons as head coach was the Blue Hens' resiliency on the offensive glass as they finished among the top three teams in the nation in offensive rebounding in 2020-21 and 2021-22.

- Under Adair's tutelage, three Delaware student-athletes earned Player of the Year honors, two were named Rookie of the Year and multiple players collected All-Conference honors.

- In recent years, Adair has taken on an increasingly prominent role within USA Basketball. In 2017, she was appointed as the U19 Women's World Cup Team Trials Court Coach. In 2018, Adair was a speaker at USA Basketball's Las Vegas Coach Academy. In 2018 and 2019, Adair earned gold medals while serving as an assistant coach for the USA teams that won the 2018 FIBA Americas U18 Championship and the 2019 FIBA U19 World Cup.

- Adair joined the Blue Hens from Georgetown University, where she turned a four-win Hoyas program into a postseason contender in three seasons as head coach. Behind Adair's leadership, Georgetown finished the 2016-17 campaign with 17 wins, the most wins for the Hoyas since 2011-12 and garnered the team's second straight trip to the Postseason WNIT.

- In only her second season at Georgetown, Adair helped the Hoyas experience a 180-degree turnaround as they finished 16-14 – the third-best NCAA DI turnaround in 2015-16 – and made the program's first postseason appearance since 2012.

- While at Georgetown, Adair coached a Big EAST Rookie of the Year, two players who were named to the league's All-Rookie team and pair of All-Conference standouts.

- Adair's first head coaching job was at College of Charleston, where (35-31 overall in two seasons). She was the first coach to lead the program to consecutive postseason appearances.



SUN DEVIL

W O M E N ' S B A S K E T B A L L

HEAD COACH NATASHA ADAIR

- In 2013-14, Adair's second season and the Cougars' first in the Colonial Athletic Association, Adair guided College of Charleston to a record of 19-15, marking the third-highest win total in the school's Division I era. Additionally, the squad finished third in conference play, defeated five postseason teams from the previous year and advanced to the semifinals of both the CAA Championship and the Women's Basketball invitational.

- In her first season at College of Charleston, Adair led the Cougars to 16 wins and a WBI postseason bid. Her first squad broke 22 school records along the way.

- While leading the College of Charleston, Adair coached two all-conference players and an all-rookie team performer who would go on to be named a three-time CAA Defensive Player of the Year.

- Adair previously spent 14 seasons in the assistant coaching ranks, with eight years (2004-12) at Wake Forest University and six seasons (1998-04) at Georgetown University. Her coaching career has seen her develop and mentor five WNBA draft picks and several players who went on to play professionally overseas.

- A founding member of the Black Coaches United, Adair has been recognized by the organization, as well as Advancement of Blacks in Sports (ABIS), as one of the top women's basketball coaches in the country. Adair prides herself on being known as a game-changer as it

relates to social justice and creating a safe space for athletes to find and use their voice; where she was a guest on ESPNW's "Around the Rim" with LaChina Robinson and Delaware's UD Winning Women in Athletics: Trailblazers and Changemakers Webinar Series.

- Adair played collegiately at Pensacola Junior College (1990- 92) before playing and graduating from the University of South Florida with a degree in communications in 1994.

- Coach Adair has two children, a son Aaron M. Adair (26), graduated magna cum laude from Johnson C. Smith University. A four-year member of the university's President's Council for his academic achievement, he also earned four letters playing for the men's basketball team. Daughter Allyssa M. Adair (18) is a freshman at Texas State University and a middle blocker on the volleyball team.



NATASHA ADAIR'S CAREER COACHING RECORD

Year	School	Overall Record	Conf. Record	Notes
2023-24	Arizona State	3-1	0-0	
2022-23	Arizona State	8-20	1-17	Led ASU to first 5-0 start since 2002-03
ASU (2 seasons)		11-21	1-17	
2021-22	Delaware	24-8	15-3	Earned program's third CAA title and its first NCAA Tournament berth since 2013
2020-21	Delaware	24-5	16-2	Named CAA Coach of the Year, guided squad to regular-season CAA title & WNIT semifinals
2019-20	Delaware	12-17	8-10	Season ended early by Covid-19
2018-19	Delaware	16-15	11-7	Reached 11 CAA wins in back-to-back seasons for the first time since 2013
2017-18	Delaware	19-13	11-7	Guided team to second-most wins (19) and first postseason appearance since 2013-14
Delaware Totals (5 seasons)		95-58	61-29	
2016-17	Georgetown	17-13	9-9	Most wins since 2012 and second straight trip to the Postseason WNIT
2015-16	Georgetown	16-14	9-9	Program's first postseason appearance since 2011-12; third best turnaround in the nation
2014-15	Georgetown	4-27	2-16	Previously served as an assistant coach for six seasons (1998-2004)
Georgetown (3 seasons)		37-54	20-34	
2013-14	College of Charleston	19-15	9-7	Third-highest win total in the school's Division I era & first season in the CAA
2012-13	College of Charleston	16-16	11-9	Third most wins in prior 23 years along with postseason WNIT invite
College of Charleston (2 seasons)		35-31	20-16	
Career Totals (12 seasons)		178-164	102-96	

2023-24 SUN DEVIL WBB ROSTER

No.	Name	Pos.	Ht.	Yr.	Hometown / High School / Last School
^0	Jaylah Robinson	G	5-11	So.	Philadelphia, Pa. / Mastery Charter School
1	Kadidia Toure	F	6-3	So.	Silver Spring, Md. / Our Lady of Good Counsel / James Madison
2	Jaddan Simmons	G	5-9	Sr.	Houston, Texas / Southwest (Wisc.)
^3	Tyi Skinner	G	5-5	Sr.	Washington, D.C. / TPLS Christian Academy / Delaware
4	Trayanna Crisp	G	5-8	So.	Goodyear, Ariz. / Millennium
10	Marina Radocaj	G/F	6-2	Fr.	Richmond, British Columbia / R.A. McMath Secondary School
11	Maggie Besselink	G/F	6-3	Sr.	Kingston, Ontario / Holy Cross Secondary School
12	Treasure Hunt	G	6-2	Sr.	Chattanooga, Tenn. / Hamilton Heights Christian Academy / Kentucky
13	Sandra Magolico	F	6-2	Jr.	Maputo, Mozambique / Escola Secundaria da Polana / New Mexico JC
20	Kiley Sours-Miller	C	6-4	Fr.	Surprise, Ariz. / Dream City Christian
21	Hanna Miller	F	6-2	So.	Aberdeen, S.D. / Aberdeen Christian / Dodge City CC
22	Journey Thompson	F	6-3	So.	McMurray, Pa. / Peters Township
23	Jalyn Brown	G	6-1	So.	Baltimore, Md. / St. Frances Academy / Louisville
24	Mallory Miller	F	6-4	Fr.	Aberdeen, S.D. / Wolsey-Wessington
25	Adison Novosel	G	5-11	Jr.	Richfield, Ohio / Revere / Saint Francis University
30	Morasha Wiggins	G	6-0	Jr.	Kalamazoo, Mich. / Kalamazoo / North Carolina
44	Isadora Sousa	G	6-0	Grad.	Sao Paulo, Brazil / Colegio A-Escopo / Chipola College

^ - Will not play in 2023-24 for medical reasons

Head Coach: Natasha Adair (2nd season)

Associate Head Coach: Darrell Mosley (2nd season)

Assistant Coach/Recruiting Coordinator: Mykala Walker (2nd season)

Assistant Coach: Camille Collier (2nd season)

Special Assistant to the Head Coach: Yvonne Sanchez (1st season)

Director of Operations: Carter Caplan (2nd season)

Assistant Director of Operations: Lizzie Oleary (2nd season)

Pronunciation Guide

Natasha Adair – A-dare

Maggie Besselink – Bessel-ink

Jalyn Brown – Jay-lynn

Trayanna Crisp – Tray-on-nah

Sandra Magolico – Sahn-dra Mag-oh-leek-oh

Adison Novosel – No-vuh-sell

Marina Radocaj – Maude-E-nuh Rahd-oh-chai

Jaylah Robinson – Jay-luh

Jaddan Simmons – Jade-en

Tyi Skinner – Tie

Isadora Sousa – So-za

Kadidia Toure – kuh-DEE-shuh TORE-ay

Morasha Wiggins – more-AH-shuh

SUN DEVIL

W O M E N ' S B A S K E T B A L L

2023-24 RADIO/TV ROSTER



0 JAYLAH ROBINSON

Sophomore | Guard | 5-11
Philadelphia, Pa.
Mastery Charter School



1 KADIDIA TOURE

Sophomore | Forward | 6-3
Silver Spring, Md | Our Lady of Good
Counsel | James Madison



2 JADDAN SIMMONS

Senior | Guard | 5-9
Houston, Texas | Southwest (Wisc.)



3 TYI SKINNER

Senior | Guard | 5-5
Washington, D.C. | TPLS Christian
Academy | Delaware



4 TRAYANNA CRISP

Sophomore | Guard | 5-8
Goodyear, Ariz. | Millennium



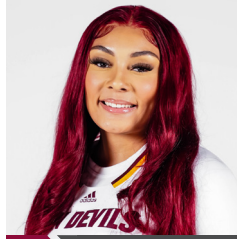
10 MARINA RADOCAJ

Freshman | Guard/Forward | 6-2
Richmond, British Columbia
R.A. McMath Secondary School



11 MAGGIE BESSELINK

Senior | Guard/Forward | 6-3
Kingston, Ontario | Holy Cross
Secondary School



12 TREASURE HUNT

Senior | Guard | 6-2
Chattanooga, Tenn. | Hamilton Heights
Christian Academy | Kentucky



13 SANDRA MAGOLICO

Junior | Forward | 6-2
Maputo, Mozambique / Escola Secundaria
da Polana / New Mexico JC



20 KILEY SOURS-MILLER

Freshman | Center | 6-4
Surprise, Ariz.
Dream City Christian



21 HANNA MILLER

Sophomore | Forward | 6-2
Aberdeen, S.D. | Aberdeen
Christian / Dodge City CC



22 JOURNEY THOMPSON

Sophomore | Forward | 6-3
McMurray, Pa. | Peters Township



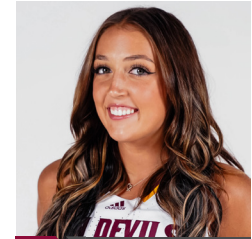
23 JALYNN BROWN

Sophomore | Guard | 6-1
Baltimore, Md. | St. Frances
Academy | Louisville



24 MALLORY MILLER

Freshman | Forward | 6-4
Aberdeen, S.D.
Wolsey-Wessington



25 ADISON NOVOSEL

Junior | Guard | 5-11
Richfield, Ohio | Revere
Saint Francis University



30 MORASHA WIGGINS

Sophomore | Junior | 6-0
Kalamazoo, Mich. | Kalamazoo
North Carolina



44 ISADORA SOUSA

Grad | Guard | 6-0
Sao Paulo, Brazil | Colegio A-Escopo
Chipola College



NATASHA ADAIR

Head Coach
Second Season



DARRELL MOSLEY

Associate Head Coach
Second Season



MYKALA WALKER

Asst. Coach/Recruiting Coordinator
Second Season



CAMILLE COLLIER

Assistant Coach
Second Season



YVONNE SANCHEZ

Special Assistant to the Head Coach
First Season



CARTER CAPLAN

Director of Operations
Second Season



LIZZIE O'LEARY

Assistant Director of Operations
Second Season

SUN DEVIL

W O M E N ' S B A S K E T B A L L



2023-24 Arizona St. Women's Basketball Combined Team Statistics All games

Page 1/1
as of Nov 17, 2023

Game Records

Record	Overall	Home	Away	Neutral
ALL GAMES	3-1	3-0	0-1	0-0
CONFERENCE	0-0	0-0	0-0	0-0
NON-CONFERENCE	3-1	3-0	0-1	0-0

Score by Periods

Team	1st	2nd	3rd	4th	OT	TOT
Arizona St.	94	74	56	65	0	289
Opponents	60	62	76	58	0	256

Team Box Score

No.	Player				Total		3-Point		F-Throw		Rebounds														
		GP-GS	MIN	AVG	FG-FGA	FG%	3FG-3FGA	3FG%	FT-FTA	FT%	OFF	DEF	TOT	AVG	PF	DQ	A	TO	BLK	STL	PTS	AVG			
2	SIMMONS, Jaddan	4-4	145:57	36.5	16-35	.457	5-9	.556	27-30	.900	4	12	16	4.0	12	0	15	3	3	12	64	16.0			
1	TOURE, Kadidia	4-4	111:05	27.8	24-45	.533	0-4	.000	11-21	.524	12	20	32	8.0	13	0	2	4	1	5	59	14.8			
23	BROWN, Jalyn	2-2	53:00	26.5	9-22	.409	3-9	.333	6-9	.667	1	6	7	3.5	8	0	2	10	0	0	27	13.5			
4	CRISP, Trayanna	4-4	131:46	32.9	14-40	.350	8-22	.364	4-7	.571	2	6	8	2.0	11	0	12	8	0	9	40	10.0			
22	THOMPSON, Journey	4-2	85:21	21.3	10-24	.417	0-1	.000	12-15	.800	13	11	24	6.0	11	0	1	7	3	2	32	8.0			
11	BESSELINK, Maggie	4-4	94:03	23.5	11-24	.458	3-8	.375	2-6	.333	8	16	24	6.0	17	1	3	8	4	3	27	6.8			
30	WIGGINS, Morasha	2-0	44:39	22.3	4-9	.444	0-1	.000	4-7	.571	1	5	6	3.0	1	0	1	1	0	2	12	6.0			
12	HUNT, Treasure	4-0	74:05	18.5	7-22	.318	2-10	.200	5-5	1.000	2	10	12	3.0	8	0	6	7	2	4	21	5.3			
10	RADOCAJ, Marina	2-0	10:15	5.1	1-3	.333	1-2	.500	0-0	.000	0	3	3	1.5	3	0	0	1	0	1	3	1.5			
24	MILLER, Mallory	3-0	29:08	9.7	1-9	.111	0-5	.000	0-0	.000	1	4	5	1.7	2	0	1	2	2	0	2	0.7			
13	MAGOLICO, Sandra	4-0	18:37	4.7	1-4	.250	0-0	.000	0-2	.000	2	1	3	0.8	3	0	2	2	0	0	2	0.5			
21	MILLER, Hanna	1-0	00:19	0.3	0-0	.000	0-0	.000	0-0	.000	0	0	0	0.0	0	0	0	0	0	0	0	0.0			
25	NOVOSEL, Adison	1-0	01:45	1.7	0-0	.000	0-0	.000	0-0	.000	0	0	0	0.0	0	0	0	0	0	0	0	0.0			
Team											8	9	17				2								
Total		4	800		98-237	.414	22-71	.310	71-102	.696	54	103	157	39.3	89	1	45	55	15	38	289	72.3			
Opponents		4	800		83-240	.346	32-88	.364	58-79	.734	60	99	159	39.8	81	2	60	72	9	24	256	64.0			

Team Statistics

	ASU	OPP
Scoring		
Points per game	72.3	64.0
Scoring margin	+8.3	-
Field goals-att		
Field goal pct	.414	.346
3 point fg-att		
3-point FG pct	.310	.364
3-pt FG made per game	5.5	8.0
Free throws-att		
Free throw pct	.696	.734
F-Throws made per game	17.8	14.5
Rebounds		
Rebounds per game	39.3	39.8
Rebounding margin	-0.5	-
Assists		
Assists per game	11.3	15.0
Turnovers		
Turnovers per game	13.8	18.0
Turnover margin	+4.3	-
Assist/turnover ratio	0.8	0.8
Steals		
Steals per game	9.5	6.0
Blocks		
Blocks per game	3.8	2.3
Winning streak		
Home win streak	3	-
Attendance		
Home games-Avg/Game	3-1246	1-521
Neutral site-Avg/Game	-	0-0

Team Results

Date	Opponent		Score	Att.
11/06/2023	UTSA	W	70-55	821
11/10/2023	Montana St.	W	75-62	1521
11/13/2023	San Francisco	W	77-69	1397
11/16/2023	at Grambling	L	67-70	521



Arizona St. Women's Basketball
Individual Career Summaries
All games

Page 1/8
as of Nov 17, 2023

BESSELINK, Maggie

				Field Goals		3-Point		F-Throws		Rebounds										Scoring	
SEASON	TEAM	GP-GS	MIN/AVG	FG-FGA	FG%	3FG-3FGA	3FG%	FT-FTA	FT%	OFF	DEF	TOT	AVG	PF-FO	A	TO	BLK	STL	PTS	AVG	
2020-21	ASU	18-14	389/21.6	31-83	.373	5-13	.385	24-33	.727	41	61	102	5.7	47-2	13	38	8	12	91	5.1	
2021-22	ASU	12-7	197/16.4	19-49	.388	0-7	.000	8-17	.471	27	37	64	5.3	28-1	8	12	5	5	46	3.8	
2023-24	ASU	4-4	94/23.5	11-24	.458	3-8	.375	2-6	.333	8	16	24	6.0	17-1	3	8	4	3	27	6.8	
TOTAL		34-25	680/20.0	61-156	.391	8-28	.286	34-56	.607	76	114	190	5.6	92-4	24	58	17	20	164	4.8	

Single Game Highs

Statistic	Value	
Points	13	vs Southern California 03/03/21
Rebounds	15	vs Minnesota 11/12/21
Assists	3	vs Washington 02/12/21
Steals	2	5 times
Blocks	3	vs Marist 11/21/21
FG Made	5	at Grambling 11/16/23
FG Attempts	10	at Grambling 11/16/23
3FG Made	3	vs UTSA 11/06/23
3FG Attempts	4	vs UTSA 11/06/23
FT Made	4	vs Stanford 01/03/21, vs Southern California 03/03/21, vs Baylor 11/26/21
FT Attempts	8	vs Baylor 11/26/21

BROWN, Jalyn

				Field Goals		3-Point		F-Throws		Rebounds										Scoring	
SEASON	TEAM	GP-GS	MIN/AVG	FG-FGA	FG%	3FG-3FGA	3FG%	FT-FTA	FT%	OFF	DEF	TOT	AVG	PF-FO	A	TO	BLK	STL	PTS	AVG	
2022-23	LOU	7-0	32/4.6	3-9	.333	1-4	.250	1-2	.500	2	1	3	0.4	1-0	0	4	0	3	8	1.1	
2023-24	ASU	2-2	53/26.5	9-22	.409	3-9	.333	6-9	.667	1	6	7	3.5	8-0	2	10	0	0	27	13.5	
TOTAL FOR ASU		2-2	53/26.5	9-22	.409	3-9	.333	6-9	.667	1	6	7	3.5	8-0	2	10	0	0	27	13.5	
TOTAL		9-2	85/9.4	12-31	.387	4-13	.308	7-11	.636	3	7	10	1.1	9-0	2	14	0	3	35	3.9	

Single Game Highs

Statistic	Value	
Points	16	vs UTSA 11/06/23
Rebounds	4	vs UTSA 11/06/23
Assists	1	vs UTSA 11/06/23, vs Montana St. 11/10/23
Steals	2	vs SIUE 12/06/22
FG Made	5	vs UTSA 11/06/23
FG Attempts	12	vs UTSA 11/06/23
3FG Made	3	vs UTSA 11/06/23
3FG Attempts	7	vs UTSA 11/06/23
FT Made	3	vs UTSA 11/06/23, vs Montana St. 11/10/23
FT Attempts	5	vs Montana St. 11/10/23



Arizona St. Women's Basketball
Individual Career Summaries
All games

Page 2/8
as of Nov 17, 2023

CRISP, Trayanna

SEASON	TEAM	GP-GS	MIN/AVG	Field Goals		3-Point		F-Throws		Rebounds									Scoring	
				FG-FGA	FG%	3FG-3FGA	3FG%	FT-FTA	FT%	OFF	DEF	TOT	AVG	PF-FO	A	TO	BLK	STL	PTS	AVG
2022-23	ASU	28-7	605/21.6	51-170	.300	14-59	.237	36-50	.720	16	49	65	2.3	58-1	37	38	1	16	152	5.4
2023-24	ASU	4-4	132/32.9	14-40	.350	8-22	.364	4-7	.571	2	6	8	2.0	11-0	12	8	0	9	40	10.0
TOTAL		32-11	736/23.0	65-210	.310	22-81	.272	40-57	.702	18	55	73	2.3	69-1	49	46	1	25	192	6.0

Single Game Highs

Statistic	Value	
Points	12	vs American 11/25/22, vs San Francisco 11/13/23
Rebounds	5	vs Prairie View 12/17/22, at Oregon St. 02/23/23, vs UCLA 03/01/23
Assists	5	vs Grambling 11/11/22, vs Missouri 12/04/22, vs Oregon 01/06/23
Steals	3	vs San Francisco 11/13/23, at Grambling 11/16/23
Blocks	1	vs Northern Ariz. 11/07/22
FG Made	5	vs Notre Dame 11/26/22
FG Attempts	14	vs Missouri 12/04/22
3FG Made	3	vs San Francisco 11/13/23
3FG Attempts	7	vs UTSA 11/06/23, vs San Francisco 11/13/23
FT Made	5	vs Prairie View 12/17/22
FT Attempts	5	vs Missouri 12/04/22, vs Prairie View 12/17/22, vs American 11/25/22

HUNT, Treasure

SEASON	TEAM	GP-GS	MIN/AVG	Field Goals		3-Point		F-Throws		Rebounds									Scoring	
				FG-FGA	FG%	3FG-3FGA	3FG%	FT-FTA	FT%	OFF	DEF	TOT	AVG	PF-FO	A	TO	BLK	STL	PTS	AVG
2020-21	UK	15-1	195/13.0	21-62	.339	10-32	.313	4-6	.667	10	22	32	2.1	16-0	10	13	5	4	56	3.7
2021-22	UK	30-29	715/23.8	74-209	.354	17-66	.258	42-79	.532	57	82	139	4.6	49-0	42	50	21	16	207	6.9
2022-23	ASU	27-27	919/34.1	103-344	.299	28-118	.237	71-103	.689	41	123	164	6.1	49-1	20	48	22	25	305	11.3
2023-24	ASU	4-0	74/18.5	7-22	.318	2-10	.200	5-5	1.000	2	10	12	3.0	8-0	6	7	2	4	21	5.3
TOTAL FOR ASU		31-27	994/32.1	110-366	.301	30-128	.234	76-108	.704	43	133	176	5.7	57-1	26	55	24	29	326	10.5
TOTAL		76-57	1903/25.0	205-637	.322	57-226	.252	122-193	.632	110	237	347	4.6	122-1	78	118	50	49	589	7.8

Single Game Highs

Statistic	Value	
Points	24	vs Arizona 01/22/23
Rebounds	15	at New Mexico 11/20/22
Assists	5	vs Presbyterian 11/09/21
Steals	3	vs Florida 01/20/22, vs California 02/10/23
Blocks	2	14 times
FG Made	7	vs Presbyterian 11/09/21, vs Prairie View 12/17/22
FG Attempts	18	at Stanford 12/31/22
3FG Made	3	5 times
3FG Attempts	9	at Arizona 12/29/22
FT Made	9	vs Arizona 01/22/23
FT Attempts	10	vs DePaul 12/09/21, at Montana St. 11/15/22, vs Arizona 01/22/23



Arizona St. Women's Basketball
Individual Career Summaries
All games

Page 3/8
as of Nov 17, 2023

MAGOLICO, Sandra

				Field Goals		3-Point		F-Throws		Rebounds									Scoring	
SEASON	TEAM	GP-GS	MIN/AVG	FG-FGA	FG%	3FG-3FGA	3FG%	FT-FTA	FT%	OFF	DEF	TOT	AVG	PF-FO	A	TO	BLK	STL	PTS	AVG
2023-24	ASU	4-0	19/4.7	1-4	.250	0-0	.000	0-2	.000	2	1	3	0.8	3-0	2	2	0	0	2	0.5
TOTAL		4-0	19/4.7	1-4	.250	0-0	.000	0-2	.000	2	1	3	0.8	3-0	2	2	0	0	2	0.5

Single Game Highs

Statistic	Value	
Points	2	vs UTSA 11/06/23
Rebounds	3	vs UTSA 11/06/23
Assists	1	vs UTSA 11/06/23, vs San Francisco 11/13/23
FG Made	1	vs UTSA 11/06/23
FG Attempts	4	vs UTSA 11/06/23
FT Attempts	2	vs UTSA 11/06/23

MILLER, Hanna

				Field Goals		3-Point		F-Throws		Rebounds									Scoring	
SEASON	TEAM	GP-GS	MIN/AVG	FG-FGA	FG%	3FG-3FGA	3FG%	FT-FTA	FT%	OFF	DEF	TOT	AVG	PF-FO	A	TO	BLK	STL	PTS	AVG
2023-24	ASU	1-0	0/0.3	0-0	.000	0-0	.000	0-0	.000	0	0	0	0.0	0-0	0	0	0	0	0	0.0
TOTAL		1-0	0/0.3	0-0	.000	0-0	.000	0-0	.000	0	0	0	0.0	0-0	0	0	0	0	0	0.0

MILLER, Mallory

				Field Goals		3-Point		F-Throws		Rebounds									Scoring	
SEASON	TEAM	GP-GS	MIN/AVG	FG-FGA	FG%	3FG-3FGA	3FG%	FT-FTA	FT%	OFF	DEF	TOT	AVG	PF-FO	A	TO	BLK	STL	PTS	AVG
2023-24	ASU	3-0	29/9.7	1-9	.111	0-5	.000	0-0	.000	1	4	5	1.7	2-0	1	2	2	0	2	0.7
TOTAL		3-0	29/9.7	1-9	.111	0-5	.000	0-0	.000	1	4	5	1.7	2-0	1	2	2	0	2	0.7

Single Game Highs

Statistic	Value	
Points	2	vs San Francisco 11/13/23
Rebounds	3	vs Montana St. 11/10/23
Assists	1	vs UTSA 11/06/23
Blocks	2	vs Montana St. 11/10/23
FG Made	1	vs San Francisco 11/13/23
FG Attempts	5	vs Montana St. 11/10/23
3FG Attempts	2	vs UTSA 11/06/23, vs Montana St. 11/10/23



Arizona St. Women's Basketball
Individual Career Summaries
All games

Page 4/8
as of Nov 17, 2023

NOVOSEL, Adison

				Field Goals		3-Point		F-Throws		Rebounds										Scoring	
SEASON	TEAM	GP-GS	MIN/AVG	FG-FGA	FG%	3FG-3FGA	3FG%	FT-FTA	FT%	OFF	DEF	TOT	AVG	PF-FO	A	TO	BLK	STL		PTS	AVG
2021-22	SF-PA	7-0	12/1.7	3-4	.750	2-3	.667	0-0	.000	1	1	2	0.3	0-0	1	1	0	1		8	1.1
2022-23	SF-PA	28-25	575/20.5	35-132	.265	29-120	.242	3-6	.500	12	35	47	1.7	32-0	12	16	5	15		102	3.6
2023-24	ASU	1-0	2/1.7	0-0	.000	0-0	.000	0-0	.000	0	0	0	0.0	0-0	0	0	0	0		0	0.0
TOTAL FOR ASU		1-0	2/1.7	0-0	.000	0-0	.000	0-0	.000	0	0	0	0.0	0-0	0	0	0	0		0	0.0
TOTAL		36-25	588/16.3	38-136	.279	31-123	.252	3-6	.500	13	36	49	1.4	32-0	13	17	5	16		110	3.1

Single Game Highs

Statistic	Value	
Points	12	vs Central Conn. St. 01/28/23
Rebounds	6	at Xavier 11/13/22, at Sacred Heart 02/09/23
Assists	3	at Marquette 11/27/22
Steals	3	vs Coppin St. 12/11/22
Blocks	1	5 times
FG Made	4	vs Central Conn. St. 01/28/23
FG Attempts	9	at Central Conn. St. 01/08/23
3FG Made	4	vs Central Conn. St. 01/28/23
3FG Attempts	8	vs Towson 11/19/22, at Central Conn. St. 01/08/23
FT Made	1	at Michigan 11/11/22, at Xavier 11/13/22, vs Merrimack 02/04/23
FT Attempts	2	at Michigan 11/11/22, at Xavier 11/13/22, vs Merrimack 02/04/23

RADOCAJ, Marina

				Field Goals		3-Point		F-Throws		Rebounds										Scoring	
SEASON	TEAM	GP-GS	MIN/AVG	FG-FGA	FG%	3FG-3FGA	3FG%	FT-FTA	FT%	OFF	DEF	TOT	AVG	PF-FO	A	TO	BLK	STL		PTS	AVG
2023-24	ASU	2-0	10/5.1	1-3	.333	1-2	.500	0-0	.000	0	3	3	1.5	3-0	0	1	0	1		3	1.5
TOTAL		2-0	10/5.1	1-3	.333	1-2	.500	0-0	.000	0	3	3	1.5	3-0	0	1	0	1		3	1.5

Single Game Highs

Statistic	Value	
Points	3	vs UTSA 11/06/23
Rebounds	3	vs Montana St. 11/10/23
Steals	1	vs UTSA 11/06/23
FG Made	1	vs UTSA 11/06/23
FG Attempts	2	vs UTSA 11/06/23
3FG Made	1	vs UTSA 11/06/23
3FG Attempts	1	vs UTSA 11/06/23, vs Montana St. 11/10/23

ROBINSON, Jaylah

				Field Goals		3-Point		F-Throws		Rebounds										Scoring	
SEASON	TEAM	GP-GS	MIN/AVG	FG-FGA	FG%	3FG-3FGA	3FG%	FT-FTA	FT%	OFF	DEF	TOT	AVG	PF-FO	A	TO	BLK	STL		PTS	AVG
2022-23	ASU	1-0	1/1.5	0-0	.000	0-0	.000	0-0	.000	0	0	0	0.0	0-0	0	2	0	0		0	0.0
TOTAL		1-0	1/1.5	0-0	.000	0-0	.000	0-0	.000	0	0	0	0.0	0-0	0	2	0	0		0	0.0



Arizona St. Women's Basketball
Individual Career Summaries
All games

Page 5/8
as of Nov 17, 2023

SIMMONS, Jaddan

				Field Goals		3-Point		F-Throws		Rebounds									Scoring	
SEASON	TEAM	GP-GS	MIN/AVG	FG-FGA	FG%	3FG-3FGA	3FG%	FT-FTA	FT%	OFF	DEF	TOT	AVG	PF-FO	A	TO	BLK	STL	PTS	AVG
2020-21	ASU	24-24	725/30.2	76-225	.338	11-62	.177	96-121	.793	26	50	76	3.2	38-0	65	49	4	27	259	10.8
2021-22	ASU	26-26	760/29.2	77-196	.393	21-65	.323	75-105	.714	23	66	89	3.4	56-1	73	46	10	43	250	9.6
2022-23	ASU	27-27	997/36.9	115-304	.378	16-57	.281	90-119	.756	49	75	124	4.6	74-1	84	55	18	50	336	12.4
2023-24	ASU	4-4	146/36.5	16-35	.457	5-9	.556	27-30	.900	4	12	16	4.0	12-0	15	3	3	12	64	16.0
TOTAL		81-81	2628/32.4	284-760	.374	53-193	.275	288-375	.768	102	203	305	3.8	180-2	237	153	35	132	909	11.2

Single Game Highs

Statistic	Value	
Points	22	at Washington St. 02/18/22, vs Northern Ariz. 11/07/22
Rebounds	10	vs UCLA 03/01/23
Assists	7	vs California 01/01/21, vs UTSA 12/04/21
Steals	6	vs California 02/10/23
Blocks	3	vs Northern Ariz. 11/07/22
FG Made	9	vs Washington St. 01/27/23
FG Attempts	19	vs UCLA 03/01/23
3FG Made	3	4 times
3FG Attempts	8	at Southern California 01/31/21
FT Made	11	vs Arizona 01/22/23
FT Attempts	14	vs Arizona 01/22/23



Arizona St. Women's Basketball
Individual Career Summaries
All games

Page 6/8
as of Nov 17, 2023

SKINNER, Tyi

				Field Goals		3-Point		F-Throws		Rebounds										Scoring	
SEASON	TEAM	GP-GS	MIN/AVG	FG-FGA	FG%	3FG-3FGA	3FG%	FT-FTA	FT%	OFF	DEF	TOT	AVG	PF-FO	A	TO	BLK	STL	PTS	AVG	
2020-21	UD	29-2	588/20.3	80-240	.333	30-121	.248	64-80	.800	13	33	46	1.6	59-0	51	59	2	25	254	8.8	
2021-22	UD	32-30	1080/33.7	139-405	.343	66-187	.353	66-84	.786	19	71	90	2.8	68-2	105	86	3	25	410	12.8	
2022-23	ASU	28-28	1025/36.6	175-485	.361	68-196	.347	121-155	.781	16	61	77	2.8	82-2	67	77	3	48	539	19.3	
TOTAL FOR ASU		28-28	1025/36.6	175-485	.361	68-196	.347	121-155	.781	16	61	77	2.8	82-2	67	77	3	48	539	19.3	
TOTAL		89-60	2693/30.3	394-1130	.349	164-504	.325	251-319	.787	48	165	213	2.4	209-4	223	222	8	98	1203	13.5	

Single Game Highs

Statistic	Value	
Points	29	at Grand Canyon 11/30/22, vs Missouri 12/04/22
Rebounds	10	at California 01/02/23
Assists	7	5 times
Steals	4	at Montana St. 11/15/22, vs Stanford 02/12/23, vs Colorado 02/17/23
Blocks	1	8 times
FG Made	10	at Towson 03/03/22, at Arizona 12/29/22, at UCLA 02/05/23
FG Attempts	29	vs Oregon St. 01/08/23
3FG Made	6	vs Missouri 12/04/22, at UCLA 02/05/23
3FG Attempts	14	vs Oregon St. 01/08/23
FT Made	15	at Grand Canyon 11/30/22
FT Attempts	17	at Grand Canyon 11/30/22

SOUSA, Isadora

				Field Goals		3-Point		F-Throws		Rebounds										Scoring	
SEASON	TEAM	GP-GS	MIN/AVG	FG-FGA	FG%	3FG-3FGA	3FG%	FT-FTA	FT%	OFF	DEF	TOT	AVG	PF-FO	A	TO	BLK	STL	PTS	AVG	
2021-22	ASU	7-0	70/10.0	4-16	.250	2-11	.182	2-4	.500	3	8	11	1.6	6-0	4	11	3	0	12	1.7	
2022-23	ASU	23-7	348/15.1	30-67	.448	4-16	.250	11-16	.688	21	54	75	3.3	23-0	25	16	2	12	75	3.3	
TOTAL		30-7	418/13.9	34-83	.410	6-27	.222	13-20	.650	24	62	86	2.9	29-0	29	27	5	12	87	2.9	

Single Game Highs

Statistic	Value	
Points	9	vs Utah 02/19/23
Rebounds	12	vs American 11/25/22
Assists	4	vs UCLA 03/01/23
Steals	2	at Grand Canyon 11/30/22, vs Washington St. 01/27/23
Blocks	1	5 times
FG Made	3	4 times
FG Attempts	7	vs Utah 02/19/23
3FG Made	1	6 times
3FG Attempts	4	vs UTSA 12/04/21
FT Made	5	at New Mexico 11/20/22
FT Attempts	6	at New Mexico 11/20/22



Arizona St. Women's Basketball
Individual Career Summaries
All games

Page 7/8
as of Nov 17, 2023

THOMPSON, Journey

				Field Goals		3-Point		F-Throws		Rebounds									Scoring	
SEASON	TEAM	GP-GS	MIN/AVG	FG-FGA	FG%	3FG-3FGA	3FG%	FT-FTA	FT%	OFF	DEF	TOT	AVG	PF-FO	A	TO	BLK	STL	PTS	AVG
2022-23	ASU	13-3	142/10.9	17-39	.436	0-0	.000	9-10	.900	12	27	39	3.0	19-0	1	7	6	6	43	3.3
2023-24	ASU	4-2	85/21.3	10-24	.417	0-1	.000	12-15	.800	13	11	24	6.0	11-0	1	7	3	2	32	8.0
TOTAL		17-5	227/13.4	27-63	.429	0-1	.000	21-25	.840	25	38	63	3.7	30-0	2	14	9	8	75	4.4

Single Game Highs

Statistic	Value	
Points	13	vs Montana St. 11/10/23
Rebounds	12	vs Oregon St. 01/08/23, vs Montana St. 11/10/23
Assists	1	vs Massachusetts 12/02/22, at Grambling 11/16/23
Steals	2	vs Prairie View 12/17/22, vs UTSA 11/06/23
Blocks	2	vs Prairie View 12/17/22, vs Montana St. 11/10/23
FG Made	5	vs Massachusetts 12/02/22
FG Attempts	10	vs Montana St. 11/10/23
3FG Attempts	1	vs Montana St. 11/10/23
FT Made	6	vs San Francisco 11/13/23
FT Attempts	7	vs San Francisco 11/13/23

TOURE, Kadidia

				Field Goals		3-Point		F-Throws		Rebounds									Scoring	
SEASON	TEAM	GP-GS	MIN/AVG	FG-FGA	FG%	3FG-3FGA	3FG%	FT-FTA	FT%	OFF	DEF	TOT	AVG	PF-FO	A	TO	BLK	STL	PTS	AVG
2022-23	JMU	21-0	166/7.9	25-56	.446	1-4	.250	20-28	.714	18	23	41	2.0	30-0	9	18	3	9	71	3.4
2023-24	ASU	4-4	111/27.8	24-45	.533	0-4	.000	11-21	.524	12	20	32	8.0	13-0	2	4	1	5	59	14.8
TOTAL FOR ASU		4-4	111/27.8	24-45	.533	0-4	.000	11-21	.524	12	20	32	8.0	13-0	2	4	1	5	59	14.8
TOTAL		25-4	277/11.1	49-101	.485	1-8	.125	31-49	.633	30	43	73	2.9	43-0	11	22	4	14	130	5.2

Single Game Highs

Statistic	Value	
Points	22	vs San Francisco 11/13/23
Rebounds	14	vs San Francisco 11/13/23
Assists	2	4 times
Steals	3	vs Queens (NC) 11/13/22, vs San Francisco 11/13/23
Blocks	2	vs Liberty 11/23/22
FG Made	9	vs San Francisco 11/13/23
FG Attempts	15	at Grambling 11/16/23
3FG Made	1	at Coastal Carolina 01/26/23
3FG Attempts	3	vs San Francisco 11/13/23
FT Made	6	at Grambling 11/16/23
FT Attempts	9	at Grambling 11/16/23



Arizona St. Women's Basketball
Individual Career Summaries
All games

Page 8/8
as of Nov 17, 2023

WIGGINS, Morasha

				Field Goals		3-Point		F-Throws		Rebounds									Scoring	
SEASON	TEAM	GP-GS	MIN/AVG	FG-FGA	FG%	3FG-3FGA	3FG%	FT-FTA	FT%	OFF	DEF	TOT	AVG	PF-FO	A	TO	BLK	STL	PTS	AVG
2021-22	UNC	21-0	174/8.3	10-38	.263	6-19	.316	6-16	.375	12	18	30	1.4	19-0	5	5	1	8	32	1.5
2023-24	ASU	2-0	45/22.3	4-9	.444	0-1	.000	4-7	.571	1	5	6	3.0	1-0	1	1	0	2	12	6.0
TOTAL FOR ASU		2-0	45/22.3	4-9	.444	0-1	.000	4-7	.571	1	5	6	3.0	1-0	1	1	0	2	12	6.0
TOTAL		23-0	219/9.5	14-47	.298	6-20	.300	10-23	.435	13	23	36	1.6	20-0	6	6	1	10	44	1.9

Single Game Highs

Statistic	Value	
Points	10	vs App State 11/17/21
Rebounds	4	vs App State 11/17/21, at Grambling 11/16/23
Assists	1	6 times
Steals	2	vs N.C. A&T 11/09/21
Blocks	1	at Wake Forest 02/03/22
FG Made	3	vs App State 11/17/21
FG Attempts	6	vs App State 11/17/21, vs San Francisco 11/13/23
3FG Made	2	vs App State 11/17/21
3FG Attempts	3	vs App State 11/17/21, vs Virginia 01/20/22, vs Duke 02/27/22
FT Made	4	vs San Francisco 11/13/23
FT Attempts	4	vs App State 11/17/21, vs Washington 11/27/21, vs San Francisco 11/13/23