



SUN DEVIL LACROSSE

Media Relations Graduate Assistant (Women's Lacrosse Contact): Nicole Praga

Phone: (509) 619-5572 | Email: npraga@asu.edu

Website: TheSunDevils.com | Facebook: facebook.com/sundevilwlax | Twitter: @SunDevilWLax | Instagram: @sundevilwlax

SCHEDULE AND RESULTS

Overall: 6-10 | Pac-12: 1-8

FEBRUARY

9	at Kennesaw St.	W, 14-6
11	at Stetson	W, 15-13
17	at San Diego St.	L, 13-14
24	at Manhattan	W, 18-8
26	at Columbia	W, 15-12

MARCH

3	vs. Presbyterian ^{^^}	W, 23-5
10	at USC ^{^^}	L, 3-14
16	vs. Oregon ^{^^}	L, 6-14
18	vs. Colorado ^{^^}	L, 2-18
20	vs. Liberty ^{^^}	L, 5-15
23	at Stanford ^{^^}	L, 7-17
25	at Cal [*]	W, 12-11 OT
30	vs. Stanford ^{^^}	L, 8-20

APRIL

1	vs. Cal [^]	L, 13-17
6	at Oregon [*]	L, 8-21
8	at Colorado [^]	L, 3-16
21	vs. USC [*]	11 a.m.
26-29	Pac-12 Championships [^]	

All times local to Arizona

BOLD indicates home game played at Sun Devil Soccer/Lacrosse Stadium

^{*} Pac-12 match-up

[^] Pac-12 Network

^{^^} Respective school's livestream

2018 QUICK FACTS

UNIVERSITY INFORMATION

School	Arizona State University
Location	Tempe, Ariz.
Founded	1885
Enrollment	71,946 (Fall 2016)
Nickname	Sun Devils
Colors	Maroon and Gold
Facility	Sun Devil Soccer Stadium
National Affiliation	NCAA Division 1
Conference	Pac-12
President	Dr. Michael Crow
Athletics Director	Ray Anderson
Sr. Associate AD/SWA	Deana Garner-Smith

LACROSSE STAFF

Head Coach	Courtney Martinez Connor
Alma Mater	Maryland, '01
Assistant Coach	Tierney Conlon
Assistant Coach	Sammy Jo Tracy
Athletic Trainer	Caitlyn Kirkpatrick

SPORTS INFORMATION

Assistant AD - Media Relations	Doug Tammaro
Mailing Address	Carson Student-Athlete Center Media Relations, Room 131 500 E Veteran's Way Tempe, AZ 85287-2505
Office Phone	(480) 965-6592
Women's Lacrosse SID	Nicole Praga
Cell	(509) 619-5572
Email	npraga@asu.edu
Website	thesundevils.com
FB/Twitter/Instagram	@SunDevilWLax

SUN DEVILS HOST USC IN REGULAR SEASON FINALE

Game 17: Arizona State Sun Devils vs. No. 21 USC Trojans

Date: Saturday, April 21

Time: 11 a.m. PT

Location: Tempe, Ariz.

Venue: Sun Devil Soccer/Lacrosse Stadium

Live Stats: thesundevils.com

Follow Along: @SunDevilWLax on Twitter



#21 USC Trojans
(8-7, 5-4 Pac-12)

The Arizona State lacrosse team (6-10, 1-8 Pac-12) returns to Tempe this weekend after a refreshing weekend off to host the No. 21 USC Trojans in the final regular season game. First draw is slated for 11 a.m. PT. Stick around after the game for post-game autographs from the whole team. Admission is free for all fans at Sun Devil Soccer/Lacrosse Stadium. Fans can follow along with the game by following the team on Twitter @SunDevilWLax.

QUICK STICKS

- The Sun Devil goalkeepers lead the conference in saves with 158 through the final week of the season. Sophomore goalkeeper Berkeley Bonneau sits at 25th in the nation for total saves through 14 games with 132, while freshman Sophia Thomas posted a career high seven in the overtime victory at Cal on March 25.
- Freshman Kate Dougherty made her first career start against Cal on April 1 and scored a career high five goals.
- Clayton is sixth in the conference in goals and is fifth in points with 55 (40 goals, 15 assists).
- All 34 eligible players have seen playing time this season.

SCOUTING THE OPPOSITION

USC: The Trojans come to Tempe after a non-conference match-up with San Diego State last week. USC beat the Aztecs 17-7 in Los Angeles to snap a three-game losing streak. Senior goalkeeper Gussie Johns had 11 saves and five ground balls while six Trojans had multi-goal games. Sophomore attacker Izzy McMahon led all scorers with four goals and one assist. On the draw, junior Jackie Gilbert matched her career high 11 draw controls. The Trojan defense also caused 11 Aztec turnovers.

LAST TIME OUT

The Sun Devils are coming off a bye weekend after playing their last conference road games of the regular season two weeks ago against Oregon and Colorado. Against the Ducks, freshmen Kate Dougherty and Daniela Wright led the team in scoring with two goals each. Sophomore goalkeeper Berkeley Bonneau led the team with four ground balls and freshman defender Lia Willis recorded a career high three draw controls. Against the Buffs, the trio of freshmen consisting of Maria Villanti, Kylie Kroeger and Julia Burns scored the three Sun Devil goals. Bonneau recorded 13 saves including nine in the first half. She also picked up two ground balls and caused one turnover.

INAUGURAL PAC-12 CHAMPIONSHIP NEXT WEEK

Arizona State will participate in the inaugural Pac-12 Championship tournament hosted by Colorado next week in Boulder, Colo. The Sun Devils will be the sixth-seed in the tournament and will play the third place seed on Thursday, April 26 in the first round. Final seedings will be determined after this weekend's games.

TRAFFIC NOTE

The 14th Annual Pat's Run to celebrate the legacy of former ASU and NFL player Pat Tillman who died serving his country in Afghanistan is on Saturday, April 21. The main event happens around Sun Devil Stadium and brings a lot of road closures for the run itself. Please pay attention to @SunDevilWLax on Twitter for instructions on how to get to the Sun Devil Soccer/Lax Stadium.

TEAM NOTES

CLAYTON EARNS FIRST NATIONAL PLAYER OF THE WEEK HONORS IN PROGRAM HISTORY

Junior co-captain Kerri Clayton was named Inside Lacrosse's Alpha Lacrosse Player of the Week on Wednesday, Feb. 14 by lacrosse fans across the country. In her debut for the Maroon and Gold, Clayton scored seven goals against Kennesaw State and had five goals and two assists against Stetson. Clayton is the first Sun Devil to ever earn any sort of Player of the Week honors.

HISTORY IN THE MAKING

The entire 2018 season will welcome records and firsts for the Sun Devil women's lacrosse team as they compete in their inaugural season and the inaugural season of women's lacrosse in the Pac-12 Conference. Women's lacrosse was the 25th varsity sport added at Arizona State University after a generous donation that supported the elevation of the Sun Devil men's ice hockey team to the NCAA Division I level provided enough support to add women's NCAA programs for both Title IX compliance and to expand educational opportunities for future Sun Devil student-athletes.

UP NEXT

Next week Colorado hosts the inaugural Pac-12 Championship in Boulder, Colo. All the quarterfinal (April 26), semifinal (April 27) and championship matches (April 29) will be broadcasted live on the Pac-12 Network.

YOUNG DEVILS

With a new NCAA Division I team comes a new crop of student-athletes and the 2018 Sun Devils are no different. The inaugural team features 33 underclassmen (22 freshmen and 11 sophomores) and just five upperclassmen (four juniors and one senior). Junior co-captains Kerri Clayton and Rachel Gregory will help lead the young team in its first year.

COUNTRY-WIDE DEVILS

The 2018 Sun Devils come to Tempe from all across the country, as 14 different states are represented in the 40-man roster. Those states include Arizona, California, Colorado, Florida, Georgia, Maryland, Minnesota, Missouri, New York, North Carolina, Pennsylvania, Texas, Virginia, and Washington. Midfielder Avery Hamill and defender Ashley McNeill also represent the great country of Canada, making the Sun Devils international.

SMARTY DEVILS

Eight Sun Devil lacrosse players are members of Barrett, The Honors College at ASU, one of the preeminent honors colleges in the nation. Kristina Copping, Kasey Geddis, Haley Gorke, Katie Hendrix, Maddy Hunter, Ashley McNeill, Campbell Poe, and Daniela Wright all challenge themselves on the field and in the classroom by taking extra coursework and completing a thesis prior to graduation. A 2017-18 school year record 68 Sun Devil student-athletes are all members of the honors college.

CLAYTON AND GREGORY DUBBED AS TEAM CAPTAINS IN INAUGURAL SEASON

Per a team vote, the junior duo of Kerri Clayton and Rachel Gregory will lead the Sun Devils as they take the field for the first time in program history.

Clayton, a native of Baltimore, Md., came to Tempe after spending her freshman year at Jacksonville University where she appeared in 14 games and made four starts. She joined the Sun Devils as a member of the first class who received a "bonus year" to come to campus to practice and scrimmage with the new team.

"The relationships that we have on the team are special, and to be a first year program and competing in such a strong conference those relationships are what are going to help us excel," said Clayton. "I am honored that my teammates have trusted me and chosen Rachel and I to represent this team in the best possible way because I want nothing more than for this program to be rewarded for all the hard work we have done behind closed doors."

Gregory, from Babylon, N.Y., came to Tempe from Hofstra University where she

was a CAA Commissioner's Academic Award recipient.

"I believe that teamwork and communication are two very crucial aspects in creating a successful team," Gregory added. "I am so excited to have the opportunity to implement those aspects of the game as a captain, and to be a part of creating a team culture of integrity, trust and hard work."

In addition to the two captains, the team also chose six additional players to serve as part of the leadership council, a group of freshmen and sophomores who will help develop the young team as the program starts its establishing years. In the freshmen group, midfielders Emily Glagolev and Maddy Hunter and defender Maria Villanti will provide leadership. For the sophomores, goalkeeper Berkeley Bonneau, defender Kristina Copping and midfielder Mia Harp will take the helm.

CONFERENCE INAUGURATION

Just as the Sun Devils are being inaugurated into the women's lacrosse world, the Pac-12 Conference is the third Power Five conference to support the sport. The Sun Devils join the USC Trojans, Stanford Cardinal, California Golden Bears, Colorado Buffaloes and Oregon Ducks, who were all previously members of the MPSF Conference, to make up the six teams necessary for a conference championship. In a pre-season poll, three Pac-12 teams are ranked in the IWLC Pre-Season Coaches Poll. The Trojans come in at No. 8 after advancing to the NCAA quarterfinals for the second year in a row before losing to eventual runner-up Boston College. Colorado comes in at No. 17 and Stanford rounds out the Pac-12's rankings at No. 23.



2018 SUN DEVIL LACROSSE ROSTER

##	Name	Position	Year	Hometown (Previous School)
00	Berkeley Bonneau	Goalkeeper	SO	Coppell, Texas (New Tech High at Coppell)
3	Erin Dibernardo	Midfield	FR	Laguna Beach, Calif. (Santa Margarita Catholic HS)
4	Katie Hendrix	Attack/Defense	FR	Newport Beach, Calif. (Newport Harbor HS)
7	Avery Hamill	Midfield	SO	Paris, ON, Canada (Paris District HS)
8	Haley Gorke	Midfield	FR	Suwanee, Ga. (North Gwinnett HS)
10	Taylor Carson	Attack	FR	Wantagh, N.Y. (Wantagh HS)
12	Emily Glagolev	Midfield	FR	Webster N.Y. (Webster Thomas HS)
14	Kennedy Jamieson	Midfield	FR	Colorado Springs, Colo. (Air Academy HS)
15	Riley Purcell	Midfield	FR	Danville, Calif. (San Ramon Valley HS)
16	Caryn Takeuchi	Attack	FR	Suffern, N.Y. (Suffern HS)
17	Maura Cissel	Midfield	FR	Annapolis, Md. (Annapolis Senior HS)
18	Sydney Bosmans	Defense	SR	Chesapeake Beach, Md. (Huntingtown HS)
19	Maria Villanti	Defense	FR	Rochester, N.Y. (Honeoye Falls HS)
21	Julia Burns	Attack	FR	Miller Place, N.Y. (Miller Place)
22	Kerri Clayton*	Attack	JR	Baltimore, Md. (Saint Paul's School for Girls)
23	Lia Willis	Defense	FR	Waldorf, Md. (Northpoint HS)
24	Maddy Hunter	Midfield	FR	Sammamish, Wash. (Eastlake HS)
25	Kristina Coppinger	Defense	SO	Kansas City, Mo. (St. Teresa's Academy)
26	Kate Dougherty	Attack	FR	Lawrenceville, Ga. (Collins Hill HS)
27	Campbell Poe	Goalkeeper	SO	Los Alamitos, Calif. (Los Alamitos HS)
28	Suzannah Liselli	Defense	SO	Morrison, Colo. (Valor Christian HS)
29	Hanna Schuler	Attack/Defense	FR	Charlottesville, Va. (Western Albemarle HS)
30	Kasey Geddis	Defense	FR	Weston, Fla. (St. Thomas Aquinas HS)
32	Ashley Cusack	Defense	SO	Kent, Wash. (John F. Kennedy Catholic HS)
33	Kylie Kroeger	Midfield	FR	San Diego, Calif. (Mission Bay HS)
34	Alexis Linhardt	Midfield	JR	Centennial, Colo. (Arapahoe HS/Winthrop University)
35	Daniela Wright	Attack	FR	Philadelphia, Pa. (Agnes Irwin School)
37	Graci Fulkerson	Attack	FR	Apex, N.C. (Apex HS)
40	Carley Adams	Attack	SO	Fort Lauderdale, Fla. (Saint Thomas Aquinas HS)
41	Kienan Linhardt	Midfield	JR	Centennial, Colo. (Arapahoe HS/Winthrop University)
45	Emma Carlson	Attack	FR	Lusby, Md. (Calverton School)
48	Madison Woodall	Midfield	SO	Davie, Fla. (St. Thomas Aquinas HS)
49	Victoria Krammer	Attack	SO	Bloomington, Minn. (Jefferson HS)
50	Ashley McNeill	Defense	FR	Vancouver, BC, Canada (Walnut Grove Secondary School)
55	Mia Harp	Midfield	SO	Coppell, Texas (Coppell HS)
56	Rachel Gregory*	Defense	JR	Babylon, N.Y. (Babylon HS/Hofstra University)
68	Logan Millican	Defense	SO	Fort Lauderdale, Fla. (Saint Thomas Aquinas HS)
99	Sophia Thomas	Goalkeeper	FR	Mechanicsburg, Pa. (Cumberland Valley HS)

*denotes 2018 team captains

ASU COACHES AND STAFF

HEAD COACH

Courtney Martinez Connor, 1st season (Maryland, '01)

ASSISTANT COACH

Tierney Conlon, 1st season (Montclair State, '15)

ASSISTANT COACH

Sammy Jo Tracy, 1st season (UNC, '17)

VOLUNTEER ASSISTANT COACH

Kate Pollock, 1st season (Notre Dame, '12)

ATHLETIC TRAINER

Caitlyn Kirkpatrick, 1st season

NAME PRONUNCIATION GUIDE

Berkeley Bonneau	berk-LEE BUH-no
Erin Dibernardo	DEE-bern-ar-dough
Emily Glagolev	GLAHG-OH-lev
Kennedy Jamieson	jaym-EH-son
Maria Villanti	VILL-ahn-tee
Kristina Coppinger	cop-ing-er
Kate Dougherty	DOUGH-er-tee
Suzannah Liselli	lis-EL-lee
Kasey Geddis	K-C
Victoria Krammer	CRAY-mer
Logan Millican	mill-EH-kin



THE LAST TIME ASU...

TEAM

Won at home.....3/3/18 vs. Presbyterian (23-5)
 Lost at home.....4/1/18 vs. Cal (13-17)
 Won on the road.....3/25/18 at Cal (12-11, OT)
 Lost on the road.....4/8/18 at Colorado (3-16)

Conference win.....3/25/18 at Cal (12-11, OT)
 Conference loss.....4/8/18 at Colorado (3-16)
 Non-Conference win.....3/3/18 vs. Presbyterian (23-5)
 Non-Conference loss.....3/20/18 vs. Liberty (5-15)

Won by 1-5 goals.....3/25/18 at Cal (12-11, OT)
 Won by 6-10 goals.....2/24/18 at Manhattan (18-8)
 Won by 11-15 goals.....Never
 Won by 16+ goals.....3/3/18 vs. Presbyterian (23-5)

Lost by 1-5 goals.....4/1/18 vs. Cal (13-17)
 Lost by 6-10 goals.....3/23/18 at Stanford (7-17)
 Lost by 11-15 goals.....4/8/18 at Colorado (3-16)
 Lost by 16+ goals.....3/18/18 vs. Colorado (2-18)

Won after leading in the second half.....3/3/18 vs. Presbyterian (led 15-3 at half, won 23-5)
 Lost after leading in the second half.....Never
 Won after trailing in the second half.....3/25/18 at Cal (trailed 5-7 at half, won 12-11 in OT)
 Lost after trailing in the second half.....4/8/18 at Colorado (trailed 1-8 at half, lost 3-16)

Largest margin of victory.....18, 3/3/18 vs. Presbyterian (23-5)
 Largest margin of loss.....16, 3/18/18 vs. Colorado (2-18)
 Held opponents to 5 goals or less.....3/3/18 vs. Presbyterian (23-5)
 Held opponenets under 10 goals.....2/24/18 at Manhattan (18-8)

Played a ranked team.....4/8/18 at No. 18 Colorado (3-16)
 Defeated a ranked team.....Never

Took 20+ shots.....22, 4/6/18 at Oregon (8-21)
 Took 30+ shots.....33, 4/1/18 vs. Cal (13-17)
 Took 40+ shots.....45, 3/3/18 vs. Presbyterian (23-5)

Scored 10+ goals.....13, 4/1/18 vs. Cal (13-17)
 Scored 15+ goals.....15, 2/26/18 at Columbia (15-12)
 Scored 20+ goals.....23, 3/3/18 vs. Presbyterian (23-5)

Recorded 10+ draw controls.....13, 3/30/18 vs. Stanford (8-20)
 Recorded 15+ draw controls.....21, 4/1/18 vs. Cal (13-17)
 Recorded 15+ ground balls.....15, 4/6/18 at Oregon (8-21)
 Recorded 20+ ground balls.....21, 3/20/18 vs. Liberty (5-15)

Caused 5+ opponent turnovers.....5, 4/1/18 vs. Cal (13-17)
 Caused 10+ opponent turnovers.....10, 3/3/18 vs. Presbyterian (23-5)

INDIVIDUAL

Scored 3+ goals.....4, Kylie Kroeger, 4/1/18 vs. Cal (13-17)
 Scored 5+ goals.....5, Kate Dougherty, 4/1/18 vs. Cal (13-17)
 Had multiple players w/ 3+ goals.....Kylie Kroeger, Kate Dougherty, 4/1/18 vs. Cal (13-17)

Had 3+ assists.....3, Kerri Clayton, 3/25/18 at Cal (12-11, OT)
 Took 5+ shots.....5, Kate Dougherty, 4/1/18 vs. Cal (13-17)
 Took 10+ shots.....11, Kerri Clayton, 2/11/18 at Stetson (15-13)

Had 5+ points.....5, Kate Dougherty (5 goals), 4/1/18 vs. Cal (13-17)
 Had 7+ points.....7, Kerri Clayton (4 goals, 3 assists), 3/25/18 at Cal (12-11, OT)

Had 5+ ground balls.....7, Berkeley Bonneau, 3/30/18 vs. Stanford (8-20)
 Had 5+ draw controls.....11, Erin Dibernardo, 4/1/18 vs. Cal (13-17)
 Had 3+ caused turnovers.....3, Rachel Gregory, 3/20/18 vs. Liberty (5-15)

INDIVIDUAL SINGLE GAME RECORDS

Fastest goal scored.....(29:15 - 1st), Graci Fulkerson, 2/9/18 at KSU
 Goals scored.....7, Kerri Clayton, 2/9/18 at KSU
 Assists.....5, Graci Fulkerson, 2/24/18 at Manhattan
 Points.....7, Kerri Clayton, 3/25/18 at Cal, 2/9/18 at KSU
 Shots.....11, Kerri Clayton, 2/11/18 at Stetson
 Saves.....17, Berkeley Bonneau, 3/18/18 vs. Colorado
 Save Percentage.....0.625, Berkeley Bonneau, 2/9/18 at KSU
 Ground Balls.....10, Maddy Hunter, 2/9/18 at KSU
 Draw Controls.....11, Erin Dibernardo, 4/1/18 vs. Cal
 Caused Turnovers.....6, Maddy Hunter, 2/26/18 at Columbia

TEAM SINGLE GAME RECORDS

Most goals scored.....23, 3/3/18 vs. Presbyterian
 Most goals allowed.....21, 4/5/18 at Oregon
 Fewest goals scored.....2, 3/18/18 vs. Colorado
 Fewest goals allowed.....5, 3/3/18 vs. Presbyterian
 Assists.....11, 3/3/18 vs. Presbyterian
 Points.....34, 3/3/18 vs. Presbyterian
 Points Allowed.....29, 4/6/18 at Oregon
 Shots.....45, 3/3/18 vs. Presbyterian
 Free Position Shots.....10, 3x, most recent: 4/1/18 vs. Cal
 Free Position Goals.....5, 2x, most recent: 4/1/18 vs. Cal
 Ground Balls.....35, 2/9/18 at Kennesaw State
 Draw Controls.....21, 4/1/18 vs. Cal
 Shooting Percentage.....0.621 (18-29), 2/24/18 at Manhattan
 Saves.....17, 3/18/18 vs. Colorado
 Save Percentage.....0.625, 2/9/18 at Kennesaw State
 Turnovers.....37, 3/18/18 vs. Colorado
 Caused Turnovers.....13, 2/26/18 at Columbia, 2/9/18 at KSU
 Margin of Victory.....18, 3/3/18 vs. Presbyterian (23-5)
 Margin of Defeat.....16, 3/18/18 vs. Colorado (2-18)

IWLCA COACHES' POLL as of April 16, 2018

RK	SCHOOL	POINTS	RECORD	PREVIOUS
1	Stony Brook	617	14-0	1
2	Boston College	596	16-0	3
3	Maryland	585	14-1	2
4	James Madison	539	13-1	4
5	North Carolina	530	11-3	5
6	Florida	492	11-3	6
7	Northwestern	478	12-3	7
8	Towson	455	12-2	8
9	Penn	413	10-2	9
10	Loyola (MD)	405	10-3	10
11	Navy (USNA)	351	11-3	13
12	Virginia	330	9-6	11
13	Stanford*	308	12-4	12
14	Virginia Tech	305	11-5	14
15	Colorado*	294	11-4	16
16	Syracuse	240	8-7	15
17	Penn State	231	9-5	17
18	Princeton	182	7-5	19
19	High Point	151	12-2	24
20	Notre Dame	137	8-7	21
21	USC*	123	8-7	20
22	Duke	105	7-7	18
T-23	Dartmouth	71	8-3	NR
T-23	Georgetown	71	9-4	23
25	Johns Hopkins	62	8-6	22

*denotes ASU 2018 season opponent



COACHING STAFF



COURTNEY MARTINEZ CONNOR HEAD COACH FIRST SEASON MARYLAND '01

Vice President for University Athletics Ray Anderson named Courtney Martinez Connor the first head coach of Arizona State's newly established women's varsity lacrosse program on Nov. 5, 2015 after lacrosse was named Sun Devil Athletics' 25th varsity sport.

Martinez Connor joined the Sun Devils following a successful career as a lacrosse analyst for ESPN and Big Ten Network.

Prior to entering her broadcasting career, Martinez Connor was the head coach for the University of Maryland, Baltimore County (UMBC) Retrievers from 2005-09. In her first year at UMBC, Martinez Connor led the Retrievers to the program's first America East regular-season title with a 5-1 conference mark in 2006. The team also recorded its first-ever victory against defending conference champion and then-ranked Boston University, also the first victory over a ranked team for the program. For her immediate turnaround at UMBC, Martinez Connor was named the America East Coach of the Year in 2006. Over her career at UMBC, Martinez Connor led the Retrievers to marquee victories over Oregon (2007) and Loyola (2008), coached 21 America East All-Conference players, had two players named to the America East All-Conference Championship team, and produced two of UMBC's most successful seasons (2006 & 2009) since 2002.

Martinez Connor took the head-coaching job at UMBC after her success at Mount St. Mary's University. In her four years as head coach at Mount St. Mary's, Martinez Connor became the all-time winningest coach in Mountaineer women's lacrosse history as she amassed 43 victories. Earning the head job right out of college, Martinez Connor turned the Mountaineers program around and led Mount St. Mary's to the Northeast Conference (NEC) Tournament title game in her final three seasons and back-to-back NEC Championships and NCAA tournament bids in 2004 and 2005.

Martinez Connor was a standout lacrosse player at the University of Maryland where she contributed to the Terrapins five NCAA Championships (1997-2001) and four Atlantic Coast Conference Championship titles (1997, 1999-2001) in her time with the team. In 2001, Martinez Connor was named the MVP of the NCAA Championship and National Defender of the Year by 360 Lacrosse Magazine.

Graduating from Maryland in 2001 with a degree in international business and marketing, Martinez Connor was a member of the ACC Honor Roll, received the Maryland Scholar-Athlete Award, and was recognized for her outstanding academic achievement by the Office of Multi-Ethnic Student Education at the University of Maryland.

Martinez Connor is married to former Maryland All-American lacrosse player Casey Connor and they are parents to their four children: Acacia, Jacinda, Callista and Caden. Her father is former left-handed pitcher "Tippy" Martinez who spent the majority of his career with the Baltimore Orioles.

MARTINEZ CONNOR COACHING RECORD

Mount St. Mary's (2001-2005): 44-31
UMBC (2005-2009): 29-36
Arizona State (present): 5-2, 0-1 Pac-12

TIERNEY CONLON ASSISTANT COACH FIRST SEASON MONTCLAIR '15

Conlon joined the Sun Devils after acting as an assistant coach at her alma mater, Montclair State. Conlon assisted head coach Nicol Parcelluzzi in all aspects of the sport including practice planning, recruiting, film breakdowns, strength and conditioning programming, and academic monitoring.

As a player for the Red Hawks, Conlon received First Team IWLC A DIII All-Region honors all four years. She played in 73 total games for MSU, totaling 187 goals in four years as a starter, and was named NJAC Player of the Year each of her last three years while adding NJAC and Skyline Conference Rookie of the Year honors as a freshman.

As a sophomore, Conlon set the MSU single-season record in both the points scored and assists categories. In her senior season, Conlon was named to the IWLC A DIII All-America First Team, becoming the first Red Hawks player in program history to be named to first team. She closed out her career at MSU as the all-time leader in assists and points and ranked fifth in goals (187), 11th in ground balls (119), 11th in draws (63) and ninth in caused turnovers (59).

Conlon finished her collegiate career as the NCAA DIII all-time leader in assists (247) and fourth all-time in points scored (187).

SAMMY JO TRACY ASSISTANT COACH FIRST SEASON NORTH CAROLINA '17

Tracy, a two-time national champion and All-American at UNC, was the latest addition to the Sun Devil coaching staff. As a Tar Heel, Tracy holds true in the UNC record book as the leader in draw controls in her career (327), in a single season (145) and in an individual game (14).

As a freshman, Tracy led the Tar Heels to the program's first national title in 2013, scoring the winning goal in sudden-death triple overtime against NCAA lacrosse-powerhouse Maryland for the victory. After redshirting the 2014 season due to injury, Tracy came back in 2015 and recorded 38 goals, five assists and 44 draw controls.

In 2016, Tracy helped the Tar Heels to their second national title in four years, once again defeating Maryland for the trophy. That same year she was the only Tar Heel to score a goal in every game, including 15 multi-goal games. Tracy smashed the previous school record of 75 draw controls in a season with 108, before breaking her own record again as a senior with 145 draw controls during the 2017 season. She also set a UNC individual game record 14 draw controls in 2016.

Tracy helped the Tar Heels win back-to-back ACC titles in 2016 and 2017, and earned ACC Offensive Player of the Week honors in April 2016.

Tracy was a two-time IWLC A All-American and three-time All-ACC selection. She was a IWLC A First Team All-South honoree and also garnered Inside Lacrosse All-American honors as a draw specialist.

Tracy founded the Draw Control Academy shortly after graduating from UNC to help develop the offensive game of club teams across New Jersey, Connecticut and New York.



2018 SUN DEVIL LACROSSE COMBINED STATS

Arizona State Combined Team Statistics All games (as of Apr 17, 2018)

RECORD:	OVERALL	HOME	AWAY	NEUTRAL
ALL GAMES	6-10	1-5	5-5	0-0
CONFERENCE	1-8	0-4	1-4	0-0
NON-CONFERENCE	5-2	1-1	4-1	0-0

Date	Opponent	Score	Att.
Feb 09	at Kennesaw State	w 14-6	548
Feb 11	at Stetson	w 15-13	209
Feb 17	at San Diego State	L 13-14	267
Feb 24	at Manhattan	w 18-8	310
Feb 26	at COLUMBIA	w 15-12	78
Mar 03	PRESBYTERIAN	w 23-5	571
* Mar 10	at #12 USC	L 3-14	165
* Mar 16	ORE	L 6-14	260
* Mar 18	COLO	L 2-18	275
Mar 20	LIBERTY	L 5-15	391
** 3/23/2018	at #19 Stanford	L 7-17	423
* Mar 25	at California	Wot 12-11	153
* Mar 30	#16 STANFORD	L 8-20	435
* Apr 01	CALIFORNIA	L 13-17	311
* Apr 06	at ORE	L 8-21	203
* Apr 08	at #18 COLO	L 3-16	379

TEAM STATISTICS	ASU	OPP
SHOT STATISTICS		
Goals-Shot attempts	165-427	221-512
Goals scored per game	10.31	13.81
Shot pct.	.386	.432
Shots on goal-Attempts	303-427	379-512
SOG pct.	.710	.740
Shots/Game	26.7	32.0
Assists	69	91
Free position Made-Att	41-100	57-140
Free position pct.	.410	.407
GOAL BREAKDOWN		
Total Goals	165	221
Free-position	41	57
Unassisted	96	130
Overtime	1	0
Goals scored average	10.25	13.73
GROUND BALLS	285	286
DRAW CONTROLS	194	221
TURNOVERS	259	233
CAUSED TURNOVERS	121	118
CLEARs	212-284	231-276
Clear Pct.	.746	.837
ATTENDANCE		
Total	2243	2735
Dates/Avg Per Date	6/374	10/274
Neutral Site #/Avg	0/0	

##	PLAYER	GP	G	A	Pts	Sh	GB	DC	TO	CT
22	Clayton, Kerri	15	40	15	55	94	11	0	30	8
12	Glagolev, Emily	16	20	14	34	54	19	0	17	8
37	Fulkerson, Graci	16	15	13	28	42	9	1	29	1
26	Dougherty, Kate	11	15	0	15	23	1	0	5	2
10	Carson, Taylor	14	13	1	14	31	2	0	11	0
24	Hunter, Maddy	12	13	2	15	37	38	53	15	19
33	Kroeger, Kylie	16	11	4	15	35	15	28	14	8
21	Burns, Julia	16	10	11	21	35	12	1	19	1
40	Adams, Carley	15	8	2	10	20	6	8	13	1
7	Hamill, Avery	8	8	2	10	15	6	3	10	4
19	Villanti, Maria	16	6	1	7	15	18	5	10	12
35	Wright, Daniela	4	3	2	5	9	1	0	3	0
3	Dibernardo, Erin	14	1	1	2	5	4	45	5	1
8	Gorke, Haley	4	1	0	1	3	0	1	1	0
14	Jamieson, Kenned	7	1	0	1	2	0	1	0	0
16	Takeuchi, Caryn	1	0	0	0	0	0	0	0	0
27	Poe, Campbell	2	0	0	0	0	0	0	0	0
28	Liselli, Suzannah	1	0	0	0	0	0	0	0	0
30	Geddis, Kasey	1	0	0	0	0	0	0	0	0
41	Linhardt, Kienan	1	0	0	0	0	0	0	0	0
49	Krammer, Victoria	1	0	0	0	0	0	0	0	0
4	Hendrix, Katie	1	0	0	0	0	0	0	0	0
29	Schuler, Hanna	6	0	0	0	0	1	0	2	0
99	Thomas, Sophia	13	0	0	0	0	9	0	3	2
17	Cissel, Maura	1	0	0	0	0	0	0	0	0
68	Millican, Logan	16	0	0	0	0	10	0	13	4
56	Gregory, Rachel	16	0	0	0	0	20	21	7	12
48	Woodall, Madison	14	0	0	0	2	0	17	1	1
34	Linhardt, Alexis	7	0	1	1	3	1	0	5	0
32	Cusack, Ashley	16	0	0	0	0	13	1	5	6
25	Coppinger, Kristin	14	0	0	0	0	15	0	4	6
23	Willis, Lia	11	0	0	0	1	9	4	4	5
18	Bosmans, Sydney	13	0	0	0	0	7	0	5	5
15	Purcell, Riley	14	0	0	0	1	7	4	6	5
--	--	1	0	0	0	0	0	0	0	1
00	Bonneau, Berkeley	16	0	0	0	0	51	0	7	9
Total		16	165	69	234	427	285	194	259	121
Opponents		16	221	91	312	512	286	221	233	118

##	Goalie	GP	Min.	GA	GAAvg	Save	Pct	W-L-T
27	Poe, Campbell	2	2:25	0	0.00	0	.000	0-0-0
99	Thomas, Sophia	13	203:16	38	11.22	26	.406	1-0-0
00	Bonneau, Berkeley	16	760:19	183	14.44	132	.419	5-10-0
Total		16	966:00	221	13.73	158	.417	6-10-0
Opponents		16	966:00	165	10.25	138	.455	10-6-0

Goals by Period	1st	2nd	OT	Total
Arizona State	79	85	1	165
Opponents	133	88	0	221

Saves by Period	1st	2nd	OT	Total
Arizona State	94	64	0	158
Opponents	79	59	0	138

Shots by Period	1st	2nd	OT	Total
Arizona State	218	207	2	427
Opponents	305	207	0	512

Shots on Goal	1st	2nd	OT	Total
Arizona State	158	144	1	303
Opponents	227	152	0	379



2018 SUN DEVIL LACROSSE BROADCAST ROSTER



Berkeley BONNEAU
Coppell, Texas



Erin DIBERNARDO
Laguna Beach, Calif.



Katie HENDRIX
Newport Beach, Calif.



Avery HAMILL
Paris, ON, Canada



Haley GORKE
Suwanee, Ga.



Taylor CARSON
Wantagh, N.Y.



Emily GLAGOLEV
Webster, N.Y.



Kennedy JAMIESON
Colorado Springs, Colo.



Riley PURCELL
Danville, Calif.



Caryn TAKEUCHI
Suffern, N.Y.



Maura CISSEL
Annapolis, Md.



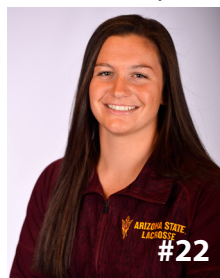
Sydney BOSMANS
Chesapeake Beach, Md.



Maria VILLANTI
Hoeoye Falls, N.Y.



Julia BURNS
Miller Place, N.Y.



Kerri CLAYTON
Baltimore, Md.



Lia WILLIS
Waldorf, Md.



Maddy HUNTER
Sammamish, Wash.



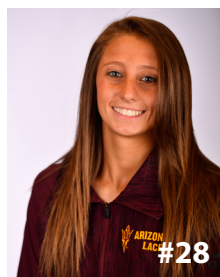
Kristina COPPINGER
Kansas City, Mo.



Kate DOUGHERTY
Lawrenceville, Ga.



Campbell POE
Los Alamitos, Calif.



Suzannah LISELLI
Morrison, Colo.



Hanna SCHULER
Charlottesville, Va.



Kasey GEDDIS
Weston, Fla.



Ashley CUSACK
Kent, Wash.



Kylie KROEGER
San Diego, Calif.



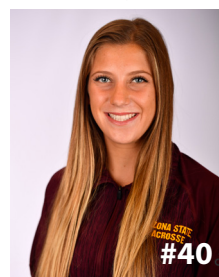
Alexis LINHARDT
Centennial, Colo.



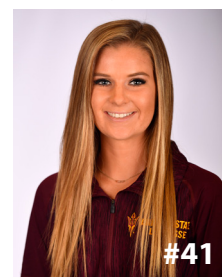
Daniela WRIGHT
Philadelphia, Pa.



Graci FULKERSON
Apex, N.C.



Carley ADAMS
Fort Lauderdale, Fla.



Kienan LINHARDT
Centennial, Colo.



2018 SUN DEVIL LACROSSE BROADCAST ROSTER



Emma CARLSON
Lusby, Md.



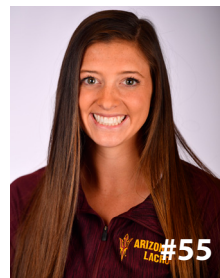
Madison WOODALL
Davie, Fla.



Victoria KRAMMER
Bloomington, Minn.



Ashley MCNEILL
Vancouver, BC, Canada



Mia HARP
Coppell, Texas



Rachel GREGORY
Babylon, N.Y.



Logan MILLICAN
Fort Lauderdale, Fla.



Sophia THOMAS
Mechanicsburg, Pa.



**Courtney MARTINEZ
CONNOR**
Head Coach



Tierney CONLON
Assistant Coach



Sammy Jo TRACY
Assistant Coach

