



SUN DEVIL LACROSSE

Media Relations Graduate Assistant (Women's Lacrosse Contact): Nicole Praga

Phone: (509) 619-5572 | Email: npraga@asu.edu

Website: TheSunDevils.com | Facebook: facebook.com/sundevilwlax | Twitter: @SunDevilWLax | Instagram: @sundevilwlax

SCHEDULE AND RESULTS

Overall: 5-2 | Pac-12: 0-1

FEBRUARY

9	at Kennesaw St.	W, 14-6
11	at Stetson	W, 15-13
17	at San Diego St.	L, 13-14
24	at Manhattan	W, 18-8
26	at Columbia	W, 15-12

MARCH

3	vs. Presbyterian^^	W, 23-5
10	at USC^^	L, 3-14
16	vs. Oregon*^^	6 p.m.
18	vs. Colorado*^^	11 a.m.
20	vs. Liberty^^	5 p.m.
23	at Stanford*^^	7 p.m.
25	at Cal*	12 p.m.
30	vs. Stanford*^^	5 p.m.

APRIL

1	vs. Cal*^	12 p.m.
6	at Oregon*	4 p.m.
8	at Colorado*^	11 a.m.
21	vs. USC*^^	11 a.m.
26-29	Pac-12 Championships^	

All times local to Arizona

BOLD indicates home game played at Sun Devil Soccer/Lacrosse Stadium

* Pac-12 match-up

^ Pac-12 Network

^^ Respective school's livestream

2018 QUICK FACTS

UNIVERSITY INFORMATION

School	Arizona State University
Location	Tempe, Ariz.
Founded	1885
Enrollment	71,946 (Fall 2016)
Nickname	Sun Devils
Colors	Maroon and Gold
Facility	Sun Devil Soccer Stadium
National Affiliation	NCAA Division 1
Conference	Pac-12
President	Dr. Michael Crow
Athletics Director	Ray Anderson
Sr. Associate AD/SWA	Deana Garner-Smith

LACROSSE STAFF

Head Coach	Courtney Martinez Connor
Alma Mater	Maryland, '01
Assistant Coach	Tierney Conlon
Assistant Coach	Sammy Jo Tracy
Athletic Trainer	Caitlyn Kirkpatrick

SPORTS INFORMATION

Assistant AD - Media Relations	Doug Tammaro
Mailing Address	Carson Student-Athlete Center Media Relations, Room 131 500 E Veteran's Way Tempe, AZ 85287-2505
Office Phone	(480) 965-6592
Women's Lacrosse SID	Nicole Praga
Cell	(509) 619-5572
Email	npraga@asu.edu
Website	thesundevils.com
FB/Twitter/Instagram	SunDevilWLax

SUN DEVILS TO HOST FIRST CONFERENCE GAMES IN TEMPE

Game 8: Arizona State Sun Devils vs Oregon Ducks

Date: Friday, March 16

Time: 6 p.m. MST

Location: Tempe, Ariz.

Venue: Sun Devil Soccer/Lacrosse Stadium

Live Stats: thesundevils.com

Watch: pac-12.com/live/arizona-state-university-2



Oregon Ducks
(3-2, 1-1)

Game 9: Arizona State Sun Devils vs No. 15 Colorado Buffalos

Date: Sunday, March 18

Time: 11 a.m. MST

Location: Tempe, Ariz.

Venue: Sun Devil Soccer/Lacrosse Stadium

Live Stats: thesundevils.com

Watch: pac-12.com/live/arizona-state-university-2



#15 Colorado Buffalos
(5-2, 2-0)

The Arizona State lacrosse team (5-2) returns home this weekend for the first ever conference lacrosse games in Tempe. The Sun Devils will play host to the Oregon Ducks on Friday at 6 p.m. local time and the No. 15 Colorado Buffalos on Sunday at 11 a.m. Sunday's game is also lacrosse's official #GreenGameASU, showing the team's commitment to sustainable practices. Admission is free for all fans at Sun Devil Soccer/Lacrosse Stadium. Fans unable to attend can watch both games via Pac-12+.

QUICK STICKS

- Junior co-captain Kerri Clayton ranks sixth in the nation for goals scored through seven games with 28. She sits at 10th in the nation with an average 4.00 goals per game.
- Freshman midfielder Maddy Hunter is second in the nation in total ground balls with 33 and is third in ground balls per game (4.71).
- The Sun Devils currently lead the Pac-12 Conference in ground balls per game.
- Clayton leads the conference in goals and is second in points with 37 (28 goals, 9 assists).
- Arizona State holds a conference-high +4.1 scoring margin over opponents with a 101-72 advantage through seven games.
- All 32 eligible players have seen playing time this season.

SCOUTING THE OPPOSITION

Oregon: The Ducks are coming off a conference opening-weekend split, picking up a win against Cal while losing to No. 18 Stanford. In the 12-7 win over the Bears, attackers Shannon Williams and Mariah Gatti each netted four goals while Cambi Cukar had four assists. Defensively the Ducks picked up four ground balls and Lexy Biller picked up six of the team's 13 draw controls. In the 19-8 loss to Stanford, the Ducks struggled against a dominant Cardinal offense. Attacker Jill Zubillaga scored four goals for the Ducks while Williams added a goal and two assists. Biller recorded eight of the team's 17 total draw controls.

Colorado: The Buffs picked up both wins over the Bay Area schools in the inaugural Pac-12 weekend, defeating No. 18 Stanford, 18-16, and Cal, 15-5. Against the Cardinal, midfielder Miranda Stinson and attacker Darby Kiernan each scored five goals for the Buffs while Kiernan also recorded three assists. As a team Colorado picked up 21 ground balls and 15 draw controls. In the win over Cal, Kiernan scored six goals, Stinson had four, and Samantha Nemirov posted four off the bench. Defensively they picked up 22 ground balls and 14 draw controls.

LAST TIME OUT

In their Pac-12 opener, the Sun Devils fell to No. 12 USC in Los Angeles, 14-3, for just their second loss this season. The first conference goal in program history came courtesy of freshman Emily Glagolev with an assist from fellow freshman Kylie Kroeger. In the second half, sophomore Carley Adams hit the back of the net down low from junior Kerri Clayton while Clayton also added a free-position goal. On the defensive side, the Sun Devils were able to hold the Trojans to just three goals in the second half. Sophomore goalkeeper Berkeley Bonneau recorded six saves in the second half and 10 total in the game to tie her career high set in the first game against Kennesaw State. The Sun Devils also caused six Trojan turnovers and picked up 16 ground balls. Freshman Maddy Hunter led the team with six draw controls while sophomore Maddy Woodall picked up a career high three.

TEAM NOTES

#GREENGAMEASU

To promote Sun Devil Athletics' green initiatives while driving fan awareness of sustainability and its best practices, Sunday will be lacrosse's official Green Game of the season. Arizona State University was the first school in the country to offer a degree in sustainability and the University prides itself on being a national leader in the sector. Sun Devil Athletics' green games will leverage the high-profile platform of athletics events to inform our fan base and highlight sustainable practices.

SUSTAINABILITY INITIATIVE AT ASU

Sustainability is one of the pillars of Arizona State University, and Sun Devil Athletics prides itself with aligning the department to minimize its carbon footprint. Athletics provides a unique opportunity to promote sustainability at our University, and Sun Devil Athletics has fully embraced the opportunity to advance sustainable practices as an institution and with our fans.

In June of 2016, USG and NACDA named Arizona State the most sustainable athletics department for its innovative and creative sustainable practices. Basketball's Weatherup Center has the distinction of being named the first athletic practice facility in the nation to become LEED-certified. Wells Fargo Arena became the first installed and operational LED-lit Power Five athletic facility, increasing lighting by 25 percent and reducing energy consumption by 75 percent. Additionally, ASU boasts the most solar panels out of any university in the country to harness the Valley's 300-plus days of sunshine.

CLAYTON EARNS FIRST NATIONAL PLAYER OF THE WEEK HONORS IN PROGRAM HISTORY

Junior co-captain Kerri Clayton was named Inside Lacrosse's Alpha Lacrosse Player of the Week on Wednesday, Feb. 14 by lacrosse fans across the country. In her debut for the Maroon and Gold, Clayton scored seven goals against Kennesaw State and had five goals and two assists against Stetson. Clayton is the first Sun Devil to ever earn any sort of Player of the Week honors.

HISTORY IN THE MAKING

The entire 2018 season will welcome records and firsts for the Sun Devil women's lacrosse team as they compete in their inaugural season and the inaugural season of women's lacrosse in the Pac-12 Conference. Women's lacrosse was the 25th varsity sport added at Arizona State University after a generous donation that supported the elevation of the Sun Devil men's ice hockey team to the NCAA Division I level provided enough support to add women's NCAA programs for both Title IX compliance and to expand educational opportunities for future Sun Devil student-athletes.

SEASON LOOK-AHEAD

The Sun Devils have a weekday tilt with Liberty on Tuesday, Mar. 20 at 5 p.m. MT for the final non-conference game of the season.

The team faces Stanford and Cal two weeks in a row for their home-and-away series, traveling to the Bay Area Mar. 23 (Stanford) and 25 (Cal) before facing them at home on Mar. 30 (Stanford) and Apr. 1 (Cal). The match against Cal at home will also be the Sun Devils' debut on the Pac-12 Network.

The Sun Devils complete the regular season traveling to Oregon (Apr. 6) and Colorado (Apr. 8) before hosting USC on Apr. 21 to finish the home tilt.

Admission is free for all Sun Devil home games at Sun Devil Soccer/Lacrosse Stadium.

The inaugural Pac-12 Championship will take place Apr. 26-29 in Boulder, Colo. with Colorado as the host. All the quarterfinal, semifinal and championship matches will be broadcasted live on the Pac-12 Network.

YOUNG DEVILS

With a new NCAA Division I team comes a new crop of student-athletes and the 2018 Sun Devils are no different. The inaugural team features 33 underclassmen (22 freshmen and 11 sophomores) and just seven upperclassmen (four

juniors and three seniors). Junior co-captains Kerri Clayton and Rachel Gregory will help lead the young team in its first year.

COUNTRY-WIDE DEVILS

The 2018 Sun Devils come to Tempe from all across the country, as 14 different states are represented in the 40-man roster. Those states include Arizona, California, Colorado, Florida, Georgia, Maryland, Minnesota, Missouri, New York, North Carolina, Pennsylvania, Texas, Virginia, and Washington. Midfielder Avery Hamill and defender Ashley McNeill also represent the great country of Canada, making the Sun Devils international.

SMARTY DEVILS

Eight Sun Devil lacrosse players are members of Barrett, The Honors College at ASU, one of the preeminent honors colleges in the nation. Kristina Copping, Kasey Geddis, Haley Gorke, Katie Hendrix, Maddy Hunter, Ashley McNeill, Campbell Poe, and Daniela Wright all challenge themselves on the field and in the classroom by taking extra coursework and completing a thesis prior to graduation. A 2017-18 school year record 68 Sun Devil student-athletes are all members of the honors college.

CLAYTON AND GREGORY DUBBED AS TEAM CAPTAINS IN INAUGURAL SEASON

Per a team vote, the junior duo of Kerri Clayton and Rachel Gregory will lead the Sun Devils as they take the field for the first time in program history.

Clayton, a native of Baltimore, Md., came to Tempe after spending her freshman year at Jacksonville University where she appeared in 14 games and made four starts. She joined the Sun Devils as a member of the first class who received a "bonus year" to come to campus to practice and scrimmage with the new team.

"The relationships that we have on the team are special, and to be a first year program and competing in such a strong conference those relationships are what are going to help us excel," said Clayton. "I am honored that my teammates have trusted me and chosen Rachel and I to represent this team in the best possible way because I want nothing more than for this program to be rewarded for all the hard work we have done behind closed doors."

Gregory, from Babylon, N.Y., came to Tempe from Hofstra University where she was a CAA Commissioner's Academic Award recipient.

"I believe that teamwork and communication are two very crucial aspects in creating a successful team," Gregory added. "I am so excited to have the opportunity to implement those aspects of the game as a captain, and to be a part of creating a team culture of integrity, trust and hard work."

In addition to the two captains, the team also chose six additional players to serve as part of the leadership council, a group of freshmen and sophomores who will help develop the young team as the program starts its establishing years. In the freshmen group, midfielders Emily Glagolev and Maddy Hunter and defender Maria Villanti will provide leadership. For the sophomores, goalkeeper Berkeley Bonneau, defender Kristina Copping and midfielder Mia Harp will take the helm.

CONFERENCE INAUGURATION

Just as the Sun Devils are being inaugurated into the women's lacrosse world, the Pac-12 Conference is the third Power Five conference to support the sport. The Sun Devils join the USC Trojans, Stanford Cardinal, California Golden Bears, Colorado Buffaloes and Oregon Ducks, who were all previously members of the MPSF Conference, to make up the six teams necessary for a conference championship. In a pre-season poll, three Pac-12 teams are ranked in the IWFLCA Pre-Season Coaches Poll. The Trojans come in at No. 8 after advancing to the NCAA quarterfinals for the second year in a row before losing to eventual runner-up Boston College. Colorado comes in at No. 17 and Stanford rounds out the Pac-12's rankings at No. 23.



2018 SUN DEVIL LACROSSE ROSTER

##	Name	Position	Year	Hometown (Previous School)
00	Berkeley Bonneau	Goalkeeper	SO	Coppell, Texas (New Tech High at Coppell)
3	Erin Dibernardo	Midfield	FR	Laguna Beach, Calif. (Santa Margarita Catholic HS)
4	Katie Hendrix	Attack/Defense	FR	Newport Beach, Calif. (Newport Harbor HS)
7	Avery Hamill	Midfield	SO	Paris, ON, Canada (Paris District HS)
8	Haley Gorke	Midfield	FR	Suwanee, Ga. (North Gwinnett HS)
10	Taylor Carson	Attack	FR	Wantagh, N.Y. (Wantagh HS)
12	Emily Glagolev	Midfield	FR	Webster N.Y. (Webster Thomas HS)
14	Kennedy Jamieson	Midfield	FR	Colorado Springs, Colo. (Air Academy HS)
15	Riley Purcell	Midfield	FR	Danville, Calif. (San Ramon Valley HS)
16	Caryn Takeuchi	Attack	FR	Suffern, N.Y. (Suffern HS)
17	Maura Cissel	Midfield	FR	Annapolis, Md. (Annapolis Senior HS)
18	Sydney Bosmans	Defense	SR	Chesapeake Beach, Md. (Huntingtown HS)
19	Maria Villanti	Defense	FR	Rochester, N.Y. (Honeoye Falls HS)
21	Julia Burns	Attack	FR	Miller Place, N.Y. (Miller Place)
22	Kerri Clayton*	Attack	JR	Baltimore, Md. (Saint Paul's School for Girls)
23	Lia Willis	Defense	FR	Waldorf, Md. (Northpoint HS)
24	Maddy Hunter	Midfield	FR	Sammamish, Wash. (Eastlake HS)
25	Kristina Coppinger	Defense	SO	Kansas City, Mo. (St. Teresa's Academy)
26	Kate Dougherty	Attack	FR	Lawrenceville, Ga. (Collins Hill HS)
27	Campbell Poe	Goalkeeper	SO	Los Alamitos, Calif. (Los Alamitos HS)
28	Suzannah Liselli	Defense	SO	Morrison, Colo. (Valor Christian HS)
29	Hanna Schuler	Attack/Defense	FR	Charlottesville, Va. (Western Albemarle HS)
30	Kasey Geddis	Defense	FR	Weston, Fla. (St. Thomas Aquinas HS)
32	Ashley Cusack	Defense	SO	Kent, Wash. (John F. Kennedy Catholic HS)
33	Kylie Kroeger	Midfield	FR	San Diego, Calif. (Mission Bay HS)
34	Alexis Linhardt	Midfield	JR	Centennial, Colo. (Arapahoe HS/Winthrop University)
35	Daniela Wright	Attack	FR	Philadelphia, Pa. (Agnes Irwin School)
37	Graci Fulkerson	Attack	FR	Apex, N.C. (Apex HS)
40	Carley Adams	Attack	SO	Fort Lauderdale, Fla. (Saint Thomas Aquinas HS)
41	Kienan Linhardt	Midfield	JR	Centennial, Colo. (Arapahoe HS/Winthrop University)
45	Emma Carlson	Attack	FR	Lusby, Md. (Calverton School)
48	Madison Woodall	Midfield	SO	Davie, Fla. (St. Thomas Aquinas HS)
49	Victoria Krammer	Attack	SO	Bloomington, Minn. (Jefferson HS)
50	Ashley McNeill	Defense	FR	Vancouver, BC, Canada (Walnut Grove Secondary School)
55	Mia Harp	Midfield	SO	Coppell, Texas (Coppell HS)
56	Rachel Gregory*	Defense	JR	Babylon, N.Y. (Babylon HS/Hofstra University)
68	Logan Millican	Defense	SO	Fort Lauderdale, Fla. (Saint Thomas Aquinas HS)
99	Sophia Thomas	Goalkeeper	FR	Mechanicsburg, Pa. (Cumberland Valley HS)

*denotes 2018 team captains

ASU COACHES AND STAFF

HEAD COACH

Courtney Martinez Connor, 1st season (Maryland, '01)

ASSISTANT COACH

Tierney Conlon, 1st season (Montclair State, '15)

ASSISTANT COACH

Sammy Jo Tracy, 1st season (UNC, '17)

VOLUNTEER ASSISTANT COACH

Kate Pollock, 1st season (Notre Dame, '12)

ATHLETIC TRAINER

Caitlyn Kirkpatrick, 1st season

NAME PRONUNCIATION GUIDE

Berkeley Bonneau	berk-LEE BUH-no
Erin Dibernardo	DEE-bern-ar-dough
Emily Glagolev	GLAHG-OH-lev
Kennedy Jamieson	jaym-EH-son
Maria Villanti	VILL-ahn-tee
Kristina Coppinger	cop-ing-er
Kate Dougherty	DOUGH-er-tee
Suzannah Liselli	lis-EL-lee
Kasey Geddis	K-C
Victoria Krammer	CRAY-mer
Logan Millican	mill-EH-kin



THE LAST TIME ASU...

INDIVIDUAL SINGLE GAME RECORDS

Fastest goal scored.....(29:15 - 1st), Graci Fulkerson, 2/9/18 at KSU
Goals scored.....7, Kerri Clayton, 2/9/18 at KSU
Assists.....5, Graci Fulkerson, 2/24/18 at Manhattan
Points.....7, Kerri Clayton, 2/9/18 at KSU
Shots.....11, Kerri Clayton, 2/11/18 at Stetson
Saves.....10, Berkeley Bonneau, 3/10/18 at USC, 2/9/18 at KSU
Save Percentage.....0.625, Berkeley Bonneau, 2/9/18 at KSU
Ground Balls.....10, Maddy Hunter, 2/9/18 at KSU
Draw Controls.....10, Maddy Hunter, 3/3/18 vs. Presbyterian
Caused Turnovers.....6, Maddy Hunter, 2/26/18 at Columbia

TEAM SINGLE GAME RECORDS

Most goals scored.....23, 3/3/18 vs. Presbyterian
Most goals allowed.....14, 3/10/18 at USC, 2/17/18 at SDSU
Fewest goals scored.....3, 3/10/18 at USC
Fewest goals allowed.....5, 3/3/18 vs. Presbyterian
Assists.....11, 3/3/18 vs. Presbyterian
Points.....34, 3/3/18 vs. Presbyterian
Points Allowed.....21, 2/11/18 at Stetson
Shots.....45, 3/3/18 vs. Presbyterian
Free Position Shots.....10, 2/11/18 at Stetson, 2/9/18 at KSU
Free Position Goals.....5, 2/17/18 at SDSU
Ground Balls.....35, 2/9/18 at Kennesaw State
Draw Controls.....20, 3/3/18 vs. Presbyterian
Shooting Percentage.....0.621 (18-29), 2/24/18 at Manhattan
Saves.....12, 2/11/18 at Stetson
Save Percentage.....0.625, 2/9/18 at Kennesaw State
Turnovers.....22, 2/11/18 at Stetson
Caused Turnovers.....13, 2/26/18 at Columbia, 2/9/18 at KSU
Margin of Victory.....18, 3/3/18 vs. Presbyterian (23-5)
Margin of Defeat.....11, 3/10/18 at USC (3-14)

IWLCA COACHES' POLL

RK	SCHOOL	POINTS	RECORD	PREVIOUS
1	Stony Brook	624	5-0	1
2	Maryland	588	5-1	2
3	Boston College	568	9-0	4
4	North Carolina	528	4-2	5
5	James Madison	525	7-0	7
6	Florida	508	4-2	3
7	Syracuse	476	4-2	8
8	Virginia	468	5-1	6
9	Northwestern	416	5-2	9
10	Navy	373	5-1	11
11	Penn	349	6-0	13
12	Southern California*	347	3-3	12
13	Loyola	345	3-2	16
14	Towson	322	4-1	10
15	Colorado*	256	5-2	19
16	Princeton	246	3-2	14
17	Penn State	185	4-3	17
18	Virginia Tech	181	6-3	24
19	Stanford*	166	4-2	18
20	Duke	162	5-2	21
21	Notre Dame	149	5-2	15
22	Denver	126	4-2	20
23	Cornell	85	3-2	22
24	John Hopkins	77	6-2	23
25	Georgetown	28	4-2	25

*denotes ASU 2018 season opponent

TEAM

Won at home.....3/3/18 vs. Presbyterian (23-5)
Lost at home.....Never
Won on the road.....2/26/18 at Columbia (15-12)
Lost on the road.....3/10/18 at USC (3-14)

Conference win.....Never
Conference loss.....3/10/18 at USC (3-14)
Non-Conference win.....3/3/18 vs. Presbyterian (23-5)
Non-Conference loss.....2/17/18 at San Diego State (13-14)

Won by 1-5 goals.....2/26/18 at Columbia (15-12)
Won by 6-10 goals.....2/24/18 at Manhattan (18-8)
Won by 11-15 goals.....Never
Won by 16+ goals.....3/3/18 vs. Presbyterian (23-5)

Lost by 1-5 goals.....2/17/18 at San Diego State (13-14)
Lost by 6-10 goals.....Never
Lost by 11-15 goals.....3/10/18 at USC (3-14)
Lost by 16+ goals.....Never

Won after leading in the second half.....3/3/18 vs. Presbyterian (led 15-3 at half, won 23-5)
Lost after leading in the second half.....Never
Won after trailing in the second half.....2/26/18 at Columbia (trailed 7-10 at half, won 15-12)
Lost after trailing in the second half.....3/10/18 at USC (trailed 1-11 at half, lost 3-14)

Largest margin of victory.....18, 3/3/18 vs. Presbyterian (23-5)
Largest margin of loss.....11, 3/10/18 at USC (3-14)
Held opponents to 5 goals or less.....3/3/18 vs. Presbyterian (23-5)
Held opponenets under 10 goals.....2/24/18 at Manhattan (18-8)

Played a ranked team.....3/10/18 at No. 12 USC (3-14)
Defeated a ranked team.....Never

Took 20+ shots.....29, 2/24/18 at Manhattan (18-8)
Took 30+ shots.....37, 2/26/18 at Columbia (15-12)
Took 40+ shots.....45, 3/3/18 vs. Presbyterian (23-5)

Scored 10+ goals.....15, 2/26/18 at Columbia (15-12)
Scored 15+ goals.....15, 2/26/18 at Columbia (15-12)
Scored 20+ goals.....23, 3/3/18 vs. Presbyterian (23-5)

Recorded 10+ draw controls.....10, 3/10/18 at USC (3-14)
Recorded 15+ draw controls.....20, 3/3/18 vs. Presbyterian (23-5)
Recorded 15+ ground balls.....16, 3/10/18 at USC (3-14)
Recorded 20+ ground balls.....22, 2/26/18 at Columbia (15-12)

Caused 5+ opponent turnovers.....6, 3/10/18 at USC (3-14)
Caused 10+ opponent turnovers.....10, 3/3/18 vs. Presbyterian (23-5)

INDIVIDUAL

Scored 3+ goals.....3, Kerri Clayton, Avery Hamill, 3/3/18 vs. Presbyterian (23-5)
Scored 5+ goals.....6, Taylor Carson, 3/3/18 vs. Presbyterian (23-5)
Had multiple players w/ 3+ goals.....Kerri Clayton, Avery Hamill/3/3/18 vs. Presbyterian (23-5)

Had 3+ assists.....4, Julia Burns, 3/3/18 vs. Presbyterian (23-5)
Took 5+ shots.....9, Kerri Clayton, 3/3/18 vs. Presbyterian (23-5)
Took 10+ shots.....11, Kerri Clayton, 2/11/18 at Stetson (15-13)

Had 5+ points.....6, Taylor Carson, Kerri Clayton, 3/3/18 vs. Presbyterian (23-5)
Had 7+ points.....7, Kerri Clayton, 2/11/18 at Stetson (15-13)

Had 5+ ground balls.....5, Maddy Hunter, 2/26/18 at Columbia (15-12)
Had 5+ draw controls.....6, Maddy Hunter, 3/10/18 at USC (3-14)
Had 3+ caused turnovers.....4, Kerri Clayton, 3/3/18 vs. Presbyterian (23-5)



COACHING STAFF



COURTNEY MARTINEZ CONNOR HEAD COACH FIRST SEASON MARYLAND '01

Vice President for University Athletics Ray Anderson named Courtney Martinez Connor the first head coach of Arizona State's newly established women's varsity lacrosse program on Nov. 5, 2015 after lacrosse was named Sun Devil Athletics' 25th varsity sport.

Martinez Connor joined the Sun Devils following a successful career as a lacrosse analyst for ESPN and Big Ten Network.

Prior to entering her broadcasting career, Martinez Connor was the head coach for the University of Maryland, Baltimore County (UMBC) Retrievers from 2005-09. In her first year at UMBC, Martinez Connor led the Retrievers to the program's first America East regular-season title with a 5-1 conference mark in 2006. The team also recorded its first-ever victory against defending conference champion and then-ranked Boston University, also the first victory over a ranked team for the program. For her immediate turnaround at UMBC, Martinez Connor was named the America East Coach of the Year in 2006. Over her career at UMBC, Martinez Connor led the Retrievers to marquee victories over Oregon (2007) and Loyola (2008), coached 21 America East All-Conference players, had two players named to the America East All-Conference Championship team, and produced two of UMBC's most successful seasons (2006 & 2009) since 2002.

Martinez Connor took the head-coaching job at UMBC after her success at Mount St. Mary's University. In her four years as head coach at Mount St. Mary's, Martinez Connor became the all-time winningest coach in Mountaineer women's lacrosse history as she amassed 43 victories. Earning the head job right out of college, Martinez Connor turned the Mountaineers program around and led Mount St. Mary's to the Northeast Conference (NEC) Tournament title game in her final three seasons and back-to-back NEC Championships and NCAA tournament bids in 2004 and 2005.

Martinez Connor was a standout lacrosse player at the University of Maryland where she contributed to the Terrapins five NCAA Championships (1997-2001) and four Atlantic Coast Conference Championship titles (1997, 1999-2001) in her time with the team. In 2001, Martinez Connor was named the MVP of the NCAA Championship and National Defender of the Year by 360 Lacrosse Magazine.

Graduating from Maryland in 2001 with a degree in international business and marketing, Martinez Connor was a member of the ACC Honor Roll, received the Maryland Scholar-Athlete Award, and was recognized for her outstanding academic achievement by the Office of Multi-Ethnic Student Education at the University of Maryland.

Martinez Connor is married to former Maryland All-American lacrosse player Casey Connor and they are parents to their four children: Acacia, Jacinda, Callista and Caden. Her father is former left-handed pitcher "Tippy" Martinez who spent the majority of his career with the Baltimore Orioles.

MARTINEZ CONNOR COACHING RECORD

Mount St. Mary's (2001-2005): 44-31
UMBC (2005-2009): 29-36
Arizona State (present): 5-2, 0-1 Pac-12

TIERNEY CONLON ASSISTANT COACH FIRST SEASON MONTCLAIR '15

Conlon joined the Sun Devils after acting as an assistant coach at her alma mater, Montclair State. Conlon assisted head coach Nicol Parcelluzzi in all aspects of the sport including practice planning, recruiting, film breakdowns, strength and conditioning programming, and academic monitoring.

As a player for the Red Hawks, Conlon received First Team IWLCA DIII All-Region honors all four years. She played in 73 total games for MSU, totaling 187 goals in four years as a starter, and was named NJAC Player of the Year each of her last three years while adding NJAC and Skyline Conference Rookie of the Year honors as a freshman.

As a sophomore, Conlon set the MSU single-season record in both the points scored and assists categories. In her senior season, Conlon was named to the IWLCA DIII All-America First Team, becoming the first Red Hawks player in program history to be named to first team. She closed out her career at MSU as the all-time leader in assists and points and ranked fifth in goals (187), 11th in ground balls (119), 11th in draws (63) and ninth in caused turnovers (59).

Conlon finished her collegiate career as the NCAA DIII all-time leader in assists (247) and fourth all-time in points scored (187).

SAMMY JO TRACY ASSISTANT COACH FIRST SEASON NORTH CAROLINA '17

Tracy, a two-time national champion and All-American at UNC, was the latest addition to the Sun Devil coaching staff. As a Tar Heel, Tracy holds true in the UNC record book as the leader in draw controls in her career (327), in a single season (145) and in an individual game (14).

As a freshman, Tracy led the Tar Heels to the program's first national title in 2013, scoring the winning goal in sudden-death triple overtime against NCAA lacrosse-powerhouse Maryland for the victory. After redshirting the 2014 season due to injury, Tracy came back in 2015 and recorded 38 goals, five assists and 44 draw controls.

In 2016, Tracy helped the Tar Heels to their second national title in four years, once again defeating Maryland for the trophy. That same year she was the only Tar Heel to score a goal in every game, including 15 multi-goal games. Tracy smashed the previous school record of 75 draw controls in a season with 108, before breaking her own record again as a senior with 145 draw controls during the 2017 season. She also set a UNC individual game record 14 draw controls in 2016.

Tracy helped the Tar Heels win back-to-back ACC titles in 2016 and 2017, and earned ACC Offensive Player of the Week honors in April 2016.

Tracy was a two-time IWLCA All-American and three-time All-ACC selection. She was a IWLCA First Team All-South honoree and also garnered Inside Lacrosse All-American honors as a draw specialist.

Tracy founded the Draw Control Academy shortly after graduating from UNC to help develop the offensive game of club teams across New Jersey, Connecticut and New York.



2018 SUN DEVIL LACROSSE INDIVIDUAL STATS

Arizona State Overall Individual Statistics All games (as of Mar 15, 2018)

Overall: 5-2 Conf: 0-1 Home: 1-0 Away: 4-2 Neut: 0-0

##	Player	gp-gs	g	a	pts	sh	sh%	sog	sog%	fpg-fps	gb	dc	t/o	ct	foul
22	Clayton, Kerri	7-7	28	9	37	57	.491	42	.737	6-13	8	0	17	5	22
12	Glagolev, Emily	7-5	14	9	23	32	.438	24	.750	3-9	12	0	10	7	19
10	Carson, Taylor	7-2	12	1	13	27	.444	20	.741	0-2	2	0	6	0	2
24	Hunter, Maddy	7-7	11	1	12	30	.367	21	.700	2-4	32	47	10	17	24
37	Fulkerson, Graci	7-7	11	11	22	28	.393	17	.607	2-5	8	1	18	1	14
40	Adams, Carley	7-3	6	1	7	12	.500	9	.750	1-3	5	3	3	1	5
21	Burns, Julia	7-3	6	5	11	15	.400	10	.667	3-6	4	0	8	1	8
7	Hamill, Avery	5-0	5	1	6	7	.714	5	.714	2-2	3	3	2	2	4
33	Kroeger, Kylie	7-7	3	3	6	15	.200	7	.467	2-6	5	10	5	5	12
26	Dougherty, Kate	3-0	2	0	2	3	.667	2	.667	-	0	0	0	0	0
8	Gorke, Haley	2-0	1	0	1	2	.500	1	.500	1-1	0	0	0	0	0
3	Dibernardo, Erin	5-3	1	1	2	4	.250	3	.750	0-1	3	12	2	1	3
14	Jamieson, Kennedy	1-0	1	0	1	2	.500	1	.500	1-1	0	0	0	0	0
99	Thomas, Sophia	5-0	0	0	0	0	.000	0	.000	-	2	0	0	0	0
29	Schuler, Hanna	2-0	0	0	0	0	.000	0	.000	-	0	0	0	0	0
4	Hendrix, Katie	1-0	0	0	0	0	.000	0	.000	-	0	0	0	0	0
16	Takeuchi, Caryn	1-0	0	0	0	0	.000	0	.000	-	0	0	0	0	0
27	Poe, Campbell	1-0	0	0	0	0	.000	0	.000	-	0	0	0	0	0
28	Liselli, Suzannah	1-0	0	0	0	0	.000	0	.000	-	0	0	0	0	0
30	Geddis, Kasey	1-0	0	0	0	0	.000	0	.000	-	0	0	0	0	0
41	Linhardt, Kienan	1-0	0	0	0	0	.000	0	.000	-	0	0	0	0	0
49	Krammer, Victoria	1-0	0	0	0	0	.000	0	.000	-	0	0	0	0	0
68	Millican, Logan	7-7	0	0	0	0	.000	0	.000	-	6	0	4	2	12
56	Gregory, Rachel	7-7	0	0	0	0	.000	0	.000	-	9	11	4	7	26
48	Woodall, Madison	6-0	0	0	0	0	.000	0	.000	-	0	3	0	1	0
34	Linhardt, Alexis	4-0	0	1	1	3	.000	2	.667	-	1	0	2	0	1
32	Cusack, Ashley	7-5	0	0	0	0	.000	0	.000	-	4	1	1	1	7
25	Coppinger, Kristina	6-3	0	0	0	0	.000	0	.000	-	6	0	2	4	4
23	Willis, Lia	4-0	0	0	0	1	.000	0	.000	-	2	1	0	1	4
19	Villanti, Maria	7-7	0	0	0	0	.000	0	.000	-	6	2	3	6	22
18	Bosmans, Sydney	4-3	0	0	0	0	.000	0	.000	-	4	0	1	2	15
15	Purcell, Riley	7-1	0	0	0	1	.000	1	1.000	-	5	0	3	2	12
--	--	1-0	0	0	0	0	.000	0	.000	-	0	0	0	1	0
00	Bonneau, Berkeley	7-7	0	0	0	0	.000	0	.000	-	26	0	3	4	1
Total		7	101	43	144	239	.423	165	.690	23-53	153	95	110	71	217
Opponents		7	72	29	101	179	.402	133	.743	22-61	114	90	121	53	166

##	Goalie	gp-gs	min	ga	gaavg	saves	pct	w	l	t	shots faced
27	Poe, Campbell	1-0	1:37	0	0.00	0	.000	0	0	0	0
99	Thomas, Sophia	5-0	60:27	10	9.93	7	.412	0	0	0	20
00	Bonneau, Berkeley	7-6	357:56	62	10.39	54	.466	5	2	0	159
Total		7	420:00	72	10.29	61	.459	5	2	0	179
Opponents		7	420:00	101	14.43	64	.388	2	5	0	239

Goals by Period	1st	2nd	Total
Arizona State	55	46	101
Opponents	40	32	72

Saves by Period	1st	2nd	Total
Arizona State	27	34	61
Opponents	37	27	64

Shots by Period	1st	2nd	Total
Arizona State	131	108	239
Opponents	95	84	179

Attendance Summary	ASU	Opponent
Total	571	1577
Dates/Avg Per Date	1/571	6/263
Neutral Site #/Avg	0/0	

Shots on Goal	1st	2nd	Total
Arizona State	92	73	165
Opponents	67	66	133

CLEARs: Arizona State -- 93-114 .816, Opponents -- 98-128 .766.



2018 SUN DEVIL LACROSSE CATEGORY LEADERS

Arizona State Category Leaders All games (as of Mar 15, 2018)

##	Points	GP	G	A	Pts	Shots
22	Clayton, Kerri	7	28	9	37	57
12	Glagolev, Emily	7	14	9	23	32
37	Fulkerson, Graci	7	11	11	22	28
10	Carson, Taylor	7	12	1	13	27
24	Hunter, Maddy	7	11	1	12	30

##	Goals	GP	G	A	Pts	Shots
22	Clayton, Kerri	7	28	9	37	57
12	Glagolev, Emily	7	14	9	23	32
10	Carson, Taylor	7	12	1	13	27
24	Hunter, Maddy	7	11	1	12	30
37	Fulkerson, Graci	7	11	11	22	28

##	Assists	GP	G	A	Pts	Shots
37	Fulkerson, Graci	7	11	11	22	28
22	Clayton, Kerri	7	28	9	37	57
12	Glagolev, Emily	7	14	9	23	32
21	Burns, Julia	7	6	5	11	15
33	Kroeger, Kylie	7	3	3	6	15

##	Ground Balls	GP	No.
24	Hunter, Maddy	7	32
00	Bonneau, Berkeley	7	26
12	Glagolev, Emily	7	12
56	Gregory, Rachel	7	9
37	Fulkerson, Graci	7	8

##	Draw Controls	GP	No.
24	Hunter, Maddy	7	47
3	Dibernardo, Erin	5	12
56	Gregory, Rachel	7	11
33	Kroeger, Kylie	7	10
7	Hamill, Avery	5	3

##	Free-position Goals	GP	No.
22	Clayton, Kerri	7	6
12	Glagolev, Emily	7	3
21	Burns, Julia	7	3
37	Fulkerson, Graci	7	2
7	Hamill, Avery	5	2

##	Shots	GP	G	A	Shots	Shot%
22	Clayton, Kerri	7	28	9	57	.491
12	Glagolev, Emily	7	14	9	32	.438
24	Hunter, Maddy	7	11	1	30	.367
37	Fulkerson, Graci	7	11	11	28	.393
10	Carson, Taylor	7	12	1	27	.444

##	Shot Pct.	GP	G	A	Shots	Shot%
7	Hamill, Avery	5	5	1	7	.714
26	Dougherty, Kate	3	2	0	3	.667
40	Adams, Carley	7	6	1	12	.500
8	Gorke, Haley	2	1	0	2	.500
14	Jamieson, Kennedy	1	1	0	2	.500

##	Shots on Goal	GP	G	A	Shots	SOG	SOG%
22	Clayton, Kerri	7	28	9	57	42	.737
12	Glagolev, Emily	7	14	9	32	24	.750
24	Hunter, Maddy	7	11	1	30	21	.700
10	Carson, Taylor	7	12	1	27	20	.741
37	Fulkerson, Graci	7	11	11	28	17	.607

##	Shots on Goal Pct.	GP	G	A	Shots	SOG	SOG%
15	Purcell, Riley	7	0	0	1	1	1.000
12	Glagolev, Emily	7	14	9	32	24	.750
40	Adams, Carley	7	6	1	12	9	.750
3	Dibernardo, Erin	5	1	1	4	3	.750
10	Carson, Taylor	7	12	1	27	20	.741

##	Caused Turnovers	GP	No.
24	Hunter, Maddy	7	17
56	Gregory, Rachel	7	7
12	Glagolev, Emily	7	7
19	Villanti, Maria	7	6
22	Clayton, Kerri	7	5



2018 SUN DEVIL LACROSSE COMBINED STATS

Arizona State Combined Team Statistics All games (as of Mar 13, 2018)

RECORD:	OVERALL	HOME	AWAY	NEUTRAL
ALL GAMES	5-2	1-0	4-2	0-0
CONFERENCE	0-1	0-0	0-1	0-0
NON-CONFERENCE	5-1	1-0	4-1	0-0

Date	Opponent	Score	Att.
Feb 09	at Kennesaw State	w 14-6	548
Feb 11	at Stetson	w 15-13	209
Feb 17	at San Diego State	L 13-14	267
Feb 24	at Manhattan	w 18-8	310
Feb 26	at COLUMBIA	w 15-12	78
Mar 03	PRESBYTERIAN	w 23-5	571
* Mar 10	at #12 USC	L 3-14	165

TEAM STATISTICS ASU OPP

SHOT STATISTICS

Goals-Shot attempts	101-239	72-179
Goals scored per game	14.43	10.29
Shot pct.	.423	.402
Shots on goal-Attempts	165-239	133-179
SOG pct.	.690	.743
Shots/Game	34.1	25.6
Assists	43	29
Free position Made-Att	23-53	22-61
Free position pct.	.434	.361

GOAL BREAKDOWN

Total Goals	101	72
Free-position	23	22
Unassisted	58	43
Overtime	0	0
Goals scored average	14.43	10.29

GROUND BALLS

GROUND BALLS	153	114
--------------	-----	-----

DRAW CONTROLS

DRAW CONTROLS	95	90
---------------	----	----

TURNOVERS

TURNOVERS	110	121
-----------	-----	-----

CAUSED TURNOVERS

CAUSED TURNOVERS	71	53
------------------	----	----

CLEARs

CLEARs	93-114	98-128
--------	--------	--------

Clear Pct.

Clear Pct.	.816	.766
------------	------	------

ATTENDANCE

ATTENDANCE	571	1577
------------	-----	------

Dates/Avg Per Date

Dates/Avg Per Date	1/571	6/263
--------------------	-------	-------

Neutral Site #/Avg

Neutral Site #/Avg	0/0	
--------------------	-----	--

##	PLAYER	GP	G	A	Pts	Sh	GB	DC	TO	CT
22	Clayton, Kerri	7	28	9	37	57	8	0	17	5
12	Glagolev, Emily	7	14	9	23	32	12	0	10	7
10	Carson, Taylor	7	12	1	13	27	2	0	6	0
24	Hunter, Maddy	7	11	1	12	30	32	47	10	17
37	Fulkerson, Graci	7	11	11	22	28	8	1	18	1
40	Adams, Carley	7	6	1	7	12	5	3	3	1
21	Burns, Julia	7	6	5	11	15	4	0	8	1
7	Hamill, Avery	5	5	1	6	7	3	3	2	2
33	Kroeger, Kylie	7	3	3	6	15	5	10	5	5
26	Dougherty, Kate	3	2	0	2	3	0	0	0	0
8	Gorke, Haley	2	1	0	1	2	0	0	0	0
3	Dibernardo, Erin	5	1	1	2	4	3	12	2	1
14	Jamieson, Kenned	1	1	0	1	2	0	0	0	0
99	Thomas, Sophia	5	0	0	0	0	2	0	0	0
29	Schuler, Hanna	2	0	0	0	0	0	0	0	0
4	Hendrix, Katie	1	0	0	0	0	0	0	0	0
16	Takeuchi, Caryn	1	0	0	0	0	0	0	0	0
27	Poe, Campbell	1	0	0	0	0	0	0	0	0
28	Liselli, Suzannah	1	0	0	0	0	0	0	0	0
30	Geddis, Kasey	1	0	0	0	0	0	0	0	0
41	Linhardt, Kienan	1	0	0	0	0	0	0	0	0
49	Krammer, Victoria	1	0	0	0	0	0	0	0	0
68	Millican, Logan	7	0	0	0	0	6	0	4	2
56	Gregory, Rachel	7	0	0	0	0	9	11	4	7
48	Woodall, Madison	6	0	0	0	0	0	3	0	1
34	Linhardt, Alexis	4	0	1	1	3	1	0	2	0
32	Cusack, Ashley	7	0	0	0	0	4	1	1	1
25	Coppinger, Kristin	6	0	0	0	0	6	0	2	4
23	Willis, Lia	4	0	0	0	1	2	1	0	1
19	Villantini, Maria	7	0	0	0	0	6	2	3	6
18	Bosmans, Sydney	4	0	0	0	0	4	0	1	2
15	Purcell, Riley	7	0	0	0	1	5	0	3	2
--	--	1	0	0	0	0	0	0	0	1
00	Bonneau, Berkeley	7	0	0	0	0	26	0	3	4
Total		7	101	43	144	239	153	95	110	71
Opponents		7	72	29	101	179	114	90	121	53

##	Goalie	GP	Min.	GA	GAAvg	Save	Pct	W-L-T
27	Poe, Campbell	1	1:37	0	0.00	0	.000	0-0-0
99	Thomas, Sophia	5	60:27	10	9.93	7	.412	0-0-0
00	Bonneau, Berkeley	7	357:56	62	10.39	54	.466	5-2-0
Total		7	420:00	72	10.29	61	.459	5-2-0
Opponents		7	420:00	101	14.43	64	.388	2-5-0

Goals by Period	1st	2nd	Total
Arizona State	55	46	101
Opponents	40	32	72

Saves by Period	1st	2nd	Total
Arizona State	27	34	61
Opponents	37	27	64

Shots by Period	1st	2nd	Total
Arizona State	131	108	239
Opponents	95	84	179

Shots on Goal	1st	2nd	Total
Arizona State	92	73	165
Opponents	67	66	133



2018 SUN DEVIL LACROSSE BROADCAST ROSTER



Berkeley BONNEAU
Coppell, Texas



Erin DIBERNARDO
Laguna Beach, Calif.



Katie HENDRIX
Newport Beach, Calif.



Avery HAMILL
Paris, ON, Canada



Haley GORKE
Suwanee, Ga.



Taylor CARSON
Wantagh, N.Y.



Emily GLAGOLEV
Webster, N.Y.



Kennedy JAMIESON
Colorado Springs, Colo.



Riley PURCELL
Danville, Calif.



Caryn TAKEUCHI
Suffern, N.Y.



Maura CISSEL
Annapolis, Md.



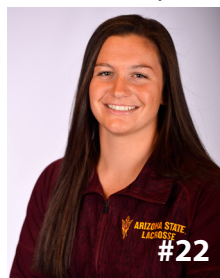
Sydney BOSMANS
Chesapeake Beach, Md.



Maria VILLANTI
Hoeoye Falls, N.Y.



Julia BURNS
Miller Place, N.Y.



Kerri CLAYTON
Baltimore, Md.



Lia WILLIS
Waldorf, Md.



Maddy HUNTER
Sammamish, Wash.



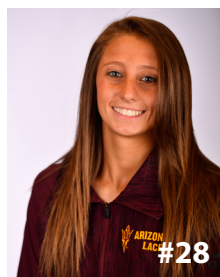
Kristina COPPINGER
Kansas City, Mo.



Kate DOUGHERTY
Lawrenceville, Ga.



Campbell POE
Los Alamitos, Calif.



Suzannah LISELLI
Morrison, Colo.



Hanna SCHULER
Charlottesville, Va.



Kasey GEDDIS
Weston, Fla.



Ashley CUSACK
Kent, Wash.



Kylie KROEGER
San Diego, Calif.



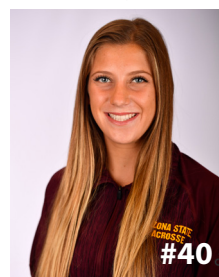
Alexis LINHARDT
Centennial, Colo.



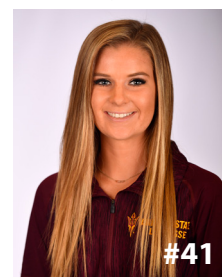
Daniela WRIGHT
Philadelphia, Pa.



Graci FULKERSON
Apex, N.C.



Carley ADAMS
Fort Lauderdale, Fla.



Kienan LINHARDT
Centennial, Colo.



2018 SUN DEVIL LACROSSE BROADCAST ROSTER



Emma CARLSON
Lusby, Md.



Madison WOODALL
Davie, Fla.



Victoria KRAMMER
Bloomington, Minn.



Ashley MCNEILL
Vancouver, BC, Canada



Mia HARP
Coppell, Texas



Rachel GREGORY
Babylon, N.Y.



Logan MILLICAN
Fort Lauderdale, Fla.



Sophia THOMAS
Mechanicsburg, Pa.



**Courtney MARTINEZ
CONNOR**
Head Coach



Tierney CONLON
Assistant Coach



Sammy Jo TRACY
Assistant Coach

