

FINAL SCORE



Arizona State

71



San Francisco

67

USF vs. Arizona State

December 03, 2019 • War Memorial at the Sobrato Center - San Francisco

FINAL STATISTICS

Official Box Score
Arizona State vs San Francisco
Game Totals -- Final Statistics

December 03, 2019 at War Memorial at the Sobrato Center - San Francisco



Arizona State 71

No.	Player	S	Pts	FG	3FG	FT	OR	DR	TR	PF	A	TO	Blk	Stl	Min	+/-
01	MARTIN, REMY	G	14	4-15	0-2	6-8	0	6	6	1	5	4	0	2	29	-3
02	EDWARDS, ROB	G	5	2-8	1-3	0-0	2	3	5	2	0	1	0	0	27	8
05	VALTONEN, ELIAS	G	6	2-2	2-2	0-0	0	2	2	3	0	1	1	0	21	8
20	THOMAS, KHALID	F	3	1-2	0-1	1-2	0	5	5	0	0	1	1	2	20	-2
23	WHITE, ROMELLO	F	14	6-7	0-0	2-3	3	8	11	0	0	2	0	1	26	2
04	LAWRENCE, KIMANI	F	7	3-5	1-2	0-0	1	1	2	2	0	0	0	0	15	4
10	HOUSE, JAELEN	G	0	0-4	0-1	0-0	0	1	1	3	1	2	0	1	18	3
11	VERGE JR. , ALONZO	G	3	1-9	0-0	1-1	0	1	1	1	2	0	0	0	15	-7
24	GRAHAM, JALEN	F	9	4-6	0-0	1-2	1	3	4	2	1	1	0	0	14	2
35	CHERRY, TAESHON	F	10	3-4	1-1	3-3	1	2	3	2	0	0	0	1	15	5
TEAM							0	2	2	0		0				
TOTALS			71	26-62	5-12	14-19	8	34	42	16	9	12	2	7	200	

Shooting By Period

Period	FG	FG%	3FG	3FG%	FT	FT%
1st Half	15-33	45%	1-5	20%	4-5	80%
2nd Half	11-29	38%	4-7	57%	10-14	71%
Game	26-62	41.9%	5-12	41.7%	14-19	73.7%

Deadball Rebounds: 3,0
 Last FG: 2nd-01:29
 Biggest Run: 6-0
 Largest lead: By 7 at 1-04
 Technical Fouls: None.

San Francisco 67

No.	Player	S	Pts	FG	3FG	FT	OR	DR	TR	PF	A	TO	Blk	Stl	Min	+/-
01	BOUYEA, JAMAREE	G	17	7-11	1-2	2-2	1	1	2	1	2	1	2	2	35	-1
05	LULL, JIMBO	C	5	2-6	0-1	1-2	3	8	11	3	0	1	2	1	33	-3
10	KUNEN, JOSH	F	10	4-5	0-0	2-2	2	8	10	3	1	5	0	0	25	-4
14	MINLEND, CHARLES	G	11	3-11	2-7	3-6	1	3	4	3	0	1	0	1	19	-2
25	RATINHO, JORDAN	G	1	0-10	0-6	1-2	2	1	3	2	1	0	0	1	26	-6
00	SHABAZZ, KHALIL	G	15	5-12	3-5	2-2	0	1	1	2	1	1	0	2	21	-7
11	RAITANEN, REMU	F	2	1-2	0-1	0-0	2	4	6	0	0	0	1	0	22	-1
12	ANDERSON, TREVANTE	G	3	1-4	1-2	0-0	0	0	0	2	0	0	0	0	7	-2
22	RYUNY, DZMITRY	F	3	1-5	1-4	0-0	0	4	4	1	0	1	1	0	12	6
TEAM							0	0	0	0		1				
TOTALS			67	24-66	8-28	11-16	11	30	41	17	5	11	6	7	200	

Shooting By Period

Period	FG	FG%	3FG	3FG%	FT	FT%
1st Half	9-29	31%	4-15	27%	8-10	80%
2nd Half	15-37	41%	4-13	31%	3-6	50%
Game	24-66	36.4%	8-28	28.6%	11-16	68.8%

Deadball Rebounds: 2,0
 Last FG: 2nd-03:30
 Biggest Run: 8-0
 Largest lead: By 4 at 2-17
 Technical Fouls: None.

Game Notes:

Officials: David Hall, Mike Reed, Kip Kissinger
 Attendance: 2892

Start Time: 11:10 PM ET
 End Time: 01:16 AM ET
 Game Duration: 2:06

Score	1st	2nd	TOT
ASU	35	36	71
USF	30	37	67

ASU led for 25:52. USF led for 10:05.
 Game was tied for 4:03.
 Times tied: 10 Lead Changes: 18

Points from	ASU	USF
In the Paint	36	32
Off Turns	9	14
2nd Chance	11	11
Fast Break	3	9
Bench	29	23

Official Box Score
Arizona State vs San Francisco
First Half Statistics Only

December 03, 2019 at War Memorial at the Sobrato Center - San Francisco



Arizona State 35

No.	Player	S	Pts	FG	3FG	FT	OR	DR	TR	PF	A	TO	Blk	Stl	Min	+/-
01	MARTIN, REMY	G	10	4-10	0-1	2-2	0	4	4	1	2	2	0	1	15	-2
02	EDWARDS, ROB	G	0	0-4	0-2	0-0	1	2	3	1	0	0	0	0	14	8
05	VALTONEN, ELIAS	G	0	0-0	0-0	0-0	0	1	1	1	0	1	1	0	11	8
20	THOMAS, KHALID	F	2	1-1	0-0	0-0	0	4	4	0	0	0	0	1	10	0
23	WHITE, ROMELLO	F	10	4-5	0-0	2-3	2	3	5	0	0	2	0	0	13	2
04	LAWRENCE, KIMANI	F	4	2-4	0-1	0-0	0	0	0	1	0	0	0	0	7	6
10	HOUSE, JAELEN	G	0	0-0	0-0	0-0	0	0	0	0	0	1	0	1	8	1
11	VERGE JR. , ALONZO	G	0	0-4	0-0	0-0	0	0	0	1	2	0	0	0	9	-4
24	GRAHAM, JALEN	F	6	3-3	0-0	0-0	1	2	3	1	1	0	0	0	7	3
35	CHERRY, TAESHON	F	3	1-2	1-1	0-0	0	1	1	1	0	0	0	1	5	3
TEAM							0	0	0	0		0				
TOTALS			35	15-33	1-5	4-5	4	17	21	7	5	6	1	4	100	

Shooting By Period

Period	FG	FG%	3FG	3FG%	FT	FT%
1st Half	15-33	45%	1-5	20%	4-5	80%
Game	26-62	41.9%	5-12	41.7%	14-19	73.7%

Deadball Rebounds: 3,0

Last FG Half: ASU 2nd-01:29

San Francisco 30

No.	Player	S	Pts	FG	3FG	FT	OR	DR	TR	PF	A	TO	Blk	Stl	Min	+/-
01	BOUYEA, JAMAREE	G	4	2-4	0-0	0-0	0	0	0	0	2	1	2	1	18	-1
05	LULL, JIMBO	C	2	1-3	0-1	0-0	0	4	4	0	0	0	0	0	16	-3
10	KUNEN, JOSH	F	4	1-2	0-0	2-2	1	3	4	0	0	2	0	0	11	-6
14	MINLEND, CHARLES	G	6	1-5	1-4	3-4	1	2	3	2	0	1	0	1	9	-9
25	RATINHO, JORDAN	G	1	0-2	0-2	1-2	0	0	0	2	0	0	0	0	13	-6
00	SHABAZZ, KHALIL	G	8	2-5	2-2	2-2	0	1	1	1	1	0	0	1	8	-1
11	RAITANEN, REMU	F	2	1-2	0-1	0-0	2	2	4	0	0	0	1	0	13	-1
12	ANDERSON, TREVANTE	G	0	0-2	0-1	0-0	0	0	0	1	0	0	0	0	4	-3
22	RYUNY, DZMITRY	F	3	1-4	1-4	0-0	0	3	3	1	0	1	1	0	7	5
TEAM							0	0	0	0		1				
TOTALS			30	9-29	4-15	8-10	4	15	19	7	3	6	4	3	100	

Shooting By Period

Period	FG	FG%	3FG	3FG%	FT	FT%
1st Half	9-29	31%	4-15	27%	8-10	80%
Game	24-66	36.4%	8-28	28.6%	11-16	68.8%

Deadball Rebounds: 2,0

Last FG Half: USF 2nd-03:30

Game Notes:

Officials: David Hall, Mike Reed, Kip Kissinger
Attendance: 2892

Start Time: 11:10 PM ET
End Time: 01:16 AM ET
Game Duration: 2:06

Score	1st	2nd	TOT
ASU	35	36	71
USF	30	37	67

Points from (This Period)	ASU	USF
In the Paint	24	10
Off Turns	6	5
2nd Chance	6	6
Fast Break	2	3
Bench	13	13

Official Play-By-Play
Arizona State vs San Francisco
First Half

December 03, 2019 at War Memorial at the Sobrato Center - San Francisco



Period 1

Starters:

Arizona State: 1 MARTIN,REMY (G); 2 EDWARDS,ROB (G); 5 VALTONEN,ELIAS (G); 20 THOMAS,KHALID (F); 23 WHITE,ROMELLO (F);

San Francisco: 1 BOUYEA,JAMAREE (G); 5 LULL,JIMBO (C); 10 KUNEN,JOSH (F); 14 MINLEND,CHARLES (G); 25 RATINHO,JORDAN (G);

Time	VISITORS: Arizona State	Score	Margin	HOME: San Francisco
19:43	TURNOVER (LOSTBALL) by VALTONEN, ELIAS			
19:43				STEAL by MINLEND, CHARLES
19:35				TURNOVER (LOSTBALL) by KUNEN, JOSH
19:35	STEAL by MARTIN, REMY			
19:29	GOOD! LAYUP by WHITE, ROMELLO	0-2	V 2	
19:29	ASSIST by MARTIN, REMY			
19:06				MISSED JUMPER by KUNEN, JOSH
19:00	REBOUND (DEF) by WHITE, ROMELLO			
18:39	GOOD! LAYUP by WHITE, ROMELLO	0-4	V 4	
18:13				MISSED JUMPER by MINLEND, CHARLES
18:09	REBOUND (DEF) by THOMAS, KHALID			
18:02	MISSED LAYUP by MARTIN, REMY			
17:57				REBOUND (DEF) by KUNEN, JOSH
17:56				MISSED 3PTR by RATINHO, JORDAN
17:53				REBOUND (OFF) by MINLEND, CHARLES
17:53	FOUL (PERSONAL) by EDWARDS, ROB			
17:53		1-4	V 3	GOOD! FT by MINLEND, CHARLES
17:53		2-4	V 2	GOOD! FT by MINLEND, CHARLES
17:37	MISSED LAYUP by MARTIN, REMY			
17:30				REBOUND (DEF) by MINLEND, CHARLES
17:21				MISSED 3PTR by MINLEND, CHARLES
17:17	REBOUND (DEF) by THOMAS, KHALID			
17:16				FOUL (PERSONAL) by RATINHO, JORDAN
17:04	MISSED JUMPER by EDWARDS, ROB			
17:00				REBOUND (DEF) by MINLEND, CHARLES
16:32				TURNOVER (SHOTCLOCK) by TEAM
16:18	GOOD! JUMPER by MARTIN, REMY	2-6	V 4	
16:03		5-6	V 1	GOOD! 3PTR by MINLEND, CHARLES
16:03				ASSIST by BOUYEA, JAMAREE
15:41	GOOD! LAYUP by MARTIN, REMY [PNT]	5-8	V 3	
15:25				TURNOVER (TRAVEL) by KUNEN, JOSH
15:24				
15:24				SUB OUT: KUNEN, JOSH
15:24				SUB OUT: MINLEND, CHARLES
15:24				SUB OUT: RATINHO, JORDAN
15:24				SUB IN: SHABAZZ, KHALIL
15:24				SUB IN: RAITANEN, REMU
15:24				SUB IN: RYUNY, DZMITRY
15:24	SUB OUT: EDWARDS, ROB			
15:24	SUB OUT: VALTONEN, ELIAS			
15:24	SUB IN: HOUSE, JAELEN			
15:24	SUB IN: VERGE JR. , ALONZO			
15:11	TURNOVER (TRAVEL) by WHITE, ROMELLO			
14:55				MISSED 3PTR by RYUNY, DZMITRY
14:52	REBOUND (DEF) by THOMAS, KHALID			
14:42	GOOD! JUMPER by MARTIN, REMY	5-10	V 5	
14:27				MISSED JUMPER by LULL, JIMBO
14:23	REBOUND (DEF) by MARTIN, REMY			
14:05	MISSED LAYUP by VERGE JR. , ALONZO			
13:59				REBOUND (DEF) by LULL, JIMBO
13:58				MISSED LAYUP by BOUYEA, JAMAREE
13:47				REBOUND (OFF) by RAITANEN, REMU
13:47		7-10	V 3	GOOD! LAYUP by RAITANEN, REMU
13:43	MISSED JUMPER by VERGE JR. , ALONZO			
13:38				REBOUND (DEF) by RYUNY, DZMITRY
13:30		10-10	T	GOOD! 3PTR by RYUNY, DZMITRY
13:30				ASSIST by SHABAZZ, KHALIL
13:07	MISSED LAYUP by VERGE JR. , ALONZO			
13:07				BLOCK by RYUNY, DZMITRY
12:58				REBOUND (DEF) by RYUNY, DZMITRY
12:57		13-10	H 3	GOOD! 3PTR by SHABAZZ, KHALIL
12:38	MISSED LAYUP by MARTIN, REMY			
12:38				BLOCK by BOUYEA, JAMAREE
12:26				REBOUND (DEF) by LULL, JIMBO
12:22				MISSED JUMPER by SHABAZZ, KHALIL
12:16	REBOUND (DEF) by WHITE, ROMELLO			
12:00	MISSED JUMPER by VERGE JR. , ALONZO			
11:59				REBOUND (DEF) by LULL, JIMBO
11:59				
11:59				SUB OUT: BOUYEA, JAMAREE

Time	VISITORS: Arizona State	Score	Margin	HOME: San Francisco
11:59				SUB OUT: LULL, JIMBO
11:59				SUB IN: KUNEN, JOSH
11:59				SUB IN: MINLEND, CHARLES
11:59	SUB OUT: MARTIN, REMY			
11:59	SUB OUT: VERGE JR. , ALONZO			
11:59	SUB OUT: THOMAS, KHALID			
11:59	SUB OUT: WHITE, ROMELLO			
11:59	SUB IN: EDWARDS, ROB			
11:59	SUB IN: LAWRENCE, KIMANI			
11:59	SUB IN: GRAHAM, JALEN			
11:59	SUB IN: CHERRY, TAESHON			
11:42				MISSED 3PTR by RYUNY, DZMITRY
11:38	REBOUND (DEF) by EDWARDS, ROB			
11:18	MISSED LAYUP by EDWARDS, ROB			
11:18				BLOCK by RAITANEN, REMU
11:02	REBOUND (OFF) by EDWARDS, ROB			
11:02	GOOD! LAYUP by GRAHAM, JALEN	13-12	H 1	
10:59				TURNOVER (LOSTBALL) by RYUNY, DZMITRY
10:59	STEAL by HOUSE, JAELEN			
10:59				FOUL (PERSONAL) by RYUNY, DZMITRY
10:59				SUB OUT: RYUNY, DZMITRY
10:59				SUB IN: RATINHO, JORDAN
10:49	MISSED 3PTR by EDWARDS, ROB			
10:46				REBOUND (DEF) by KUNEN, JOSH
10:42				MISSED 3PTR by MINLEND, CHARLES
10:39				REBOUND (OFF) by RAITANEN, REMU
10:39	FOUL (PERSONAL) by MARTIN, REMY			
10:34				FOUL (PERSONAL) by MINLEND, CHARLES
10:31	MISSED 3PTR by LAWRENCE, KIMANI			
10:24	REBOUND (OFF) by GRAHAM, JALEN			
10:23	GOOD! JUMPER by LAWRENCE, KIMANI	13-14	V 1	
10:23	ASSIST by GRAHAM, JALEN			
10:05				MISSED JUMPER by SHABAZZ, KHALIL
10:01	REBOUND (DEF) by EDWARDS, ROB			
09:51	TURNOVER (LOSTBALL) by HOUSE, JAELEN			
09:51				STEAL by SHABAZZ, KHALIL
09:41	FOUL (PERSONAL) by LAWRENCE, KIMANI			
09:41				MISSED FT by MINLEND, CHARLES
09:41				REBOUND (OFF) by TEAM
09:41				SUB OUT: SHABAZZ, KHALIL
09:41				SUB IN: BOUYEA, JAMAREE
09:41	SUB OUT: HOUSE, JAELEN			
09:41	SUB OUT: CHERRY, TAESHON			
09:41	SUB IN: MARTIN, REMY			
09:41	SUB IN: VALTONEN, ELIAS			
09:41		14-14	T	GOOD! FT by MINLEND, CHARLES
09:41				SUB OUT: MINLEND, CHARLES
09:41				SUB IN: ANDERSON, TREVANTE
09:27	MISSED 3PTR by EDWARDS, ROB			
09:24				REBOUND (DEF) by RAITANEN, REMU
09:20	FOUL (PERSONAL) by GRAHAM, JALEN			
09:20		15-14	H 1	GOOD! FT by RATINHO, JORDAN [FB]
09:20				MISSED FT by RATINHO, JORDAN
09:20	REBOUND (DEF) by GRAHAM, JALEN			
09:05	TURNOVER (LANEVIOLATION) by MARTIN, REMY			
08:44				MISSED 3PTR by RATINHO, JORDAN
08:40	REBOUND (DEF) by GRAHAM, JALEN			
08:30	GOOD! JUMPER by GRAHAM, JALEN	15-16	V 1	
08:10		17-16	H 1	GOOD! JUMPER by KUNEN, JOSH
08:10				ASSIST by BOUYEA, JAMAREE
07:31				
07:31	SUB OUT: GRAHAM, JALEN			
07:31	SUB IN: CHERRY, TAESHON			
07:31	MISSED LAYUP by CHERRY, TAESHON			
07:31				REBOUND (DEF) by KUNEN, JOSH
07:31				SUB OUT: KUNEN, JOSH
07:31				SUB IN: LULL, JIMBO
07:31	SUB OUT: CHERRY, TAESHON			
07:31	SUB IN: WHITE, ROMELLO			
07:15				MISSED LAYUP by BOUYEA, JAMAREE
07:15	BLOCK by VALTONEN, ELIAS			
07:09	REBOUND (DEF) by MARTIN, REMY			
07:11				FOUL (PERSONAL) by RATINHO, JORDAN
07:11	GOOD! FT by MARTIN, REMY [FB]	17-17	T	
07:11	GOOD! FT by MARTIN, REMY [FB]	17-18	V 1	
07:03				MISSED LAYUP by ANDERSON, TREVANTE
06:59	REBOUND (DEF) by MARTIN, REMY			
06:53	GOOD! JUMPER by MARTIN, REMY	17-20	V 3	
06:33		19-20	V 1	GOOD! JUMPER by LULL, JIMBO [PNT]
06:08	GOOD! LAYUP by LAWRENCE, KIMANI	19-22	V 3	

Time	VISITORS: Arizona State	Score	Margin	HOME: San Francisco
05:50				MISSED 3PTR by ANDERSON, TREVANTE
05:46	REBOUND (DEF) by VALTONEN, ELIAS			
05:40	MISSED 3PTR by MARTIN, REMY			
05:40				BLOCK by BOUYEA, JAMAREE
05:32				REBOUND (DEF) by RAITANEN, REMU
05:30				MISSED 3PTR by RAITANEN, REMU
05:26	REBOUND (DEF) by MARTIN, REMY			
05:22	MISSED LAYUP by LAWRENCE, KIMANI			
05:20	REBOUND (OFF) by WHITE, ROMELLO			
05:20				FOUL (PERSONAL) by ANDERSON, TREVANTE
05:19	SUB OUT: MARTIN, REMY			
05:19	SUB OUT: EDWARDS, ROB			
05:19	SUB OUT: LAWRENCE, KIMANI			
05:19	SUB IN: HOUSE, JAELEN			
05:19	SUB IN: VERGE JR. , ALONZO			
05:19	SUB IN: THOMAS, KHALID			
05:12				FOUL (PERSONAL) by MINLEND, CHARLES
05:12				SUB OUT: RAITANEN, REMU
05:12				SUB OUT: ANDERSON, TREVANTE
05:12				SUB OUT: RATINHO, JORDAN
05:12				SUB IN: SHABAZZ, KHALIL
05:12				SUB IN: KUNEN, JOSH
05:12				SUB IN: MINLEND, CHARLES
05:12	GOOD! FT by WHITE, ROMELLO	19-23	V 4	
05:12	GOOD! FT by WHITE, ROMELLO	19-24	V 5	
04:57				TURNOVER (BADPASS) by MINLEND, CHARLES
04:57	STEAL by THOMAS, KHALID			
04:50	GOOD! LAYUP by THOMAS, KHALID	19-26	V 7	
04:42				MISSED JUMPER by SHABAZZ, KHALIL
04:39	REBOUND (DEF) by THOMAS, KHALID			
04:41				FOUL (PERSONAL) by SHABAZZ, KHALIL
04:41	MISSED FT by WHITE, ROMELLO			
04:41				REBOUND (DEF) by SHABAZZ, KHALIL
04:35	FOUL (PERSONAL) by VERGE JR. , ALONZO			
04:35		20-26	V 6	GOOD! FT by SHABAZZ, KHALIL [FB]
04:35		21-26	V 5	GOOD! FT by SHABAZZ, KHALIL [FB]
04:22	GOOD! DUNK by WHITE, ROMELLO	21-28	V 7	
04:22	ASSIST by VERGE JR. , ALONZO			
04:06		24-28	V 4	GOOD! 3PTR by SHABAZZ, KHALIL
03:41	MISSED JUMPER by WHITE, ROMELLO			
03:35				REBOUND (DEF) by LULL, JIMBO
03:31				MISSED 3PTR by LULL, JIMBO
03:26	REBOUND (DEF) by WHITE, ROMELLO			
03:15	GOOD! LAYUP by WHITE, ROMELLO	24-30	V 6	
03:15	ASSIST by VERGE JR. , ALONZO			
03:01				MISSED 3PTR by MINLEND, CHARLES
02:59				REBOUND (OFF) by KUNEN, JOSH
02:59	FOUL (PERSONAL) by VALTONEN, ELIAS			
02:59				
02:59				SUB OUT: SHABAZZ, KHALIL
02:59				SUB OUT: MINLEND, CHARLES
02:59				SUB IN: RYUNY, DZMITRY
02:59				SUB IN: RATINHO, JORDAN
02:59	SUB OUT: VALTONEN, ELIAS			
02:59	SUB OUT: HOUSE, JAELEN			
02:59	SUB OUT: THOMAS, KHALID			
02:59	SUB IN: MARTIN, REMY			
02:59	SUB IN: EDWARDS, ROB			
02:59	SUB IN: CHERRY, TAESHON			
02:59	FOUL (PERSONAL) by CHERRY, TAESHON			
02:59		25-30	V 5	GOOD! FT by KUNEN, JOSH
02:59		26-30	V 4	GOOD! FT by KUNEN, JOSH
02:59				SUB OUT: KUNEN, JOSH
02:59				SUB IN: RAITANEN, REMU
02:46	MISSED JUMPER by MARTIN, REMY			
02:41				REBOUND (DEF) by RYUNY, DZMITRY
02:29				TURNOVER (LOSTBALL) by BOUYEA, JAMAREE
02:29	STEAL by CHERRY, TAESHON			
02:22	MISSED JUMPER by MARTIN, REMY			
02:18	REBOUND (OFF) by WHITE, ROMELLO			
02:17	TURNOVER (LOSTBALL) by WHITE, ROMELLO			
02:03	SUB OUT: WHITE, ROMELLO			
02:03	SUB IN: GRAHAM, JALEN			
01:55		28-30	V 2	GOOD! LAYUP by BOUYEA, JAMAREE
01:24	GOOD! 3PTR by CHERRY, TAESHON	28-33	V 5	
01:24	ASSIST by MARTIN, REMY			
01:06				MISSED 3PTR by RYUNY, DZMITRY
01:02	REBOUND (DEF) by CHERRY, TAESHON			
00:56	TURNOVER (LOSTBALL) by MARTIN, REMY			
00:56				STEAL by BOUYEA, JAMAREE

Time	VISITORS: Arizona State	Score	Margin	HOME: San Francisco
00:47		30-33	V 3	GOOD! LAYUP by BOUYEA, JAMAREE
00:31	GOOD! JUMPER by GRAHAM, JALEN	30-35	V 5	

Arizona State 35, San Francisco 30

Points from (This Period)	ASU	USF
In the Paint	24	10
Off Turns	6	5
2nd Chance	6	6
Fast Break	2	3
Bench	13	13

Official Box Score
Arizona State vs San Francisco
Second Half Statistics Only
December 03, 2019 at War Memorial at the Sobrato Center - San Francisco



Arizona State 36

No.	Player	S	Pts	FG	3FG	FT	OR	DR	TR	PF	A	TO	Blk	Stl	Min	+/-
01	MARTIN, REMY	G	4	0-5	0-1	4-6	0	2	2	0	3	2	0	1	14	-1
02	EDWARDS, ROB	G	5	2-4	1-1	0-0	1	1	2	1	0	1	0	0	13	0
05	VALTONEN, ELIAS	G	6	2-2	2-2	0-0	0	1	1	2	0	0	0	0	10	0
20	THOMAS, KHALID	F	1	0-1	0-1	1-2	0	1	1	0	0	1	1	1	9	-2
23	WHITE, ROMELLO	F	4	2-2	0-0	0-0	1	5	6	0	0	0	0	1	13	0
04	LAWRENCE, KIMANI	F	3	1-1	1-1	0-0	1	1	2	1	0	0	0	0	8	-2
10	HOUSE, JAELEN	G	0	0-4	0-1	0-0	0	1	1	3	1	1	0	0	9	2
11	VERGE JR. , ALONZO	G	3	1-5	0-0	1-1	0	1	1	0	0	0	0	0	6	-3
24	GRAHAM, JALEN	F	3	1-3	0-0	1-2	0	1	1	1	0	1	0	0	7	-1
35	CHERRY, TAESHON	F	7	2-2	0-0	3-3	1	1	2	1	0	0	0	0	10	2
	TEAM						0	2	2	0		0				
TOTALS			36	11-29	4-7	10-14	4	17	21	9	4	6	1	3	100	

Shooting By Period

Period	FG	FG%	3FG	3FG%	FT	FT%
2nd Half	11-29	38%	4-7	57%	10-14	71%
Game	26-62	41.9%	5-12	41.7%	14-19	73.7%

Deadball Rebounds: 3,0

Last FG Half: ASU -

San Francisco 37

No.	Player	S	Pts	FG	3FG	FT	OR	DR	TR	PF	A	TO	Blk	Stl	Min	+/-
01	BOUYEA, JAMAREE	G	13	5-7	1-2	2-2	1	1	2	1	0	0	0	1	18	0
05	LULL, JIMBO	C	3	1-3	0-0	1-2	3	4	7	3	0	1	2	1	18	0
10	KUNEN, JOSH	F	6	3-3	0-0	0-0	1	5	6	3	1	3	0	0	13	2
14	MINLEND, CHARLES	G	5	2-6	1-3	0-2	0	1	1	1	0	0	0	0	10	7
25	RATINHO, JORDAN	G	0	0-8	0-4	0-0	2	1	3	0	1	0	0	1	13	0
00	SHABAZZ, KHALIL	G	7	3-7	1-3	0-0	0	0	0	1	0	1	0	1	13	-6
11	RAITANEN, REMU	F	0	0-0	0-0	0-0	0	2	2	0	0	0	0	0	9	0
12	ANDERSON, TREVANTE	G	3	1-2	1-1	0-0	0	0	0	1	0	0	0	0	2	1
22	RYUNY, DZMITRY	F	0	0-1	0-0	0-0	0	1	1	0	0	0	0	0	4	1
	TEAM						0	0	0	0		0				
TOTALS			37	15-37	4-13	3-6	7	15	22	10	2	5	2	4	100	

Shooting By Period

Period	FG	FG%	3FG	3FG%	FT	FT%
2nd Half	15-37	41%	4-13	31%	3-6	50%
Game	24-66	36.4%	8-28	28.6%	11-16	68.8%

Deadball Rebounds: 2,0

Last FG Half: USF -

Game Notes:

Officials: David Hall, Mike Reed, Kip Kissinger
Attendance: 2892

Start Time: 11:10 PM ET
End Time: 01:16 AM ET
Game Duration: 2:06

Score	1st	2nd	TOT
ASU	35	36	71
USF	30	37	67

Points from (This Period)	ASU	USF
In the Paint	12	22
Off Turns	3	9
2nd Chance	5	5
Fast Break	1	6
Bench	16	10

Official Play-By-Play
Arizona State vs San Francisco
Second Half

December 03, 2019 at War Memorial at the Sobrato Center - San Francisco



Period 2

Starters:

Arizona State: 1 MARTIN, REMY (G); 2 EDWARDS, ROB (G); 5 VALTONEN, ELIAS (G); 20 THOMAS, KHALID (F); 23 WHITE, ROMELLO (F);

San Francisco: 1 BOUYEA, JAMAREE (G); 5 LULL, JIMBO (C); 10 KUNEN, JOSH (F); 14 MINLEND, CHARLES (G); 25 RATINHO, JORDAN (G);

Time	VISITORS: Arizona State	Score	Margin	HOME: San Francisco
20:00				SUB OUT: RAITANEN, REMU
20:00				SUB OUT: RYUNY, DZMITRY
20:00				SUB IN: KUNEN, JOSH
20:00				SUB IN: MINLEND, CHARLES
20:00	SUB OUT: VERGE JR. , ALONZO			
20:00	SUB OUT: GRAHAM, JALEN			
20:00	SUB OUT: CHERRY, TAESHON			
20:00	SUB IN: VALTONEN, ELIAS			
20:00	SUB IN: THOMAS, KHALID			
20:00	SUB IN: WHITE, ROMELLO			
19:40				TURNOVER (LOSTBALL) by LULL, JIMBO
19:40	STEAL by WHITE, ROMELLO			
19:23	TURNOVER (BADPASS) by EDWARDS, ROB			
19:11		33-35	V 2	GOOD! 3PTR by BOUYEA, JAMAREE
19:11				ASSIST by RATINHO, JORDAN
18:51	MISSED 3PTR by THOMAS, KHALID			
18:47				REBOUND (DEF) by KUNEN, JOSH
18:42				MISSED 3PTR by RATINHO, JORDAN
18:38	REBOUND (DEF) by TEAM			
18:20	MISSED JUMPER by MARTIN, REMY			
18:16				REBOUND (DEF) by MINLEND, CHARLES
18:13	FOUL (PERSONAL) by VALTONEN, ELIAS			
18:06		36-35	H 1	GOOD! 3PTR by MINLEND, CHARLES
17:42	TURNOVER (LOSTBALL) by MARTIN, REMY			
17:42				STEAL by BOUYEA, JAMAREE
17:35		38-35	H 3	GOOD! LAYUP by BOUYEA, JAMAREE [FB]
17:31	TIMEOUT 30SEC			
17:19				FOUL (PERSONAL) by MINLEND, CHARLES
17:19	MISSED FT by MARTIN, REMY			
17:19	REBOUND (OFF) by TEAM			
17:19				SUB OUT: MINLEND, CHARLES
17:19				SUB IN: SHABAZZ, KHALIL
17:19	GOOD! FT by MARTIN, REMY	38-36	H 2	
17:08		40-36	H 4	GOOD! LAYUP by KUNEN, JOSH
16:51	GOOD! JUMPER by EDWARDS, ROB	40-38	H 2	
16:33				MISSED 3PTR by RATINHO, JORDAN
16:30	REBOUND (DEF) by MARTIN, REMY			
16:27	GOOD! 3PTR by VALTONEN, ELIAS	40-41	V 1	
16:27	ASSIST by MARTIN, REMY			
16:19	FOUL (PERSONAL) by EDWARDS, ROB			
16:19	SUB OUT: EDWARDS, ROB			
16:19	SUB IN: HOUSE, JAELEN			
16:07				FOUL (OFF) by KUNEN, JOSH
16:07				TURNOVER (OFFENSIVE) by KUNEN, JOSH
15:57				FOUL (PERSONAL) by SHABAZZ, KHALIL
15:57				
15:57				SUB OUT: KUNEN, JOSH
15:57				SUB OUT: RATINHO, JORDAN
15:57				SUB IN: RAITANEN, REMU
15:57				SUB IN: RYUNY, DZMITRY
15:40	MISSED JUMPER by HOUSE, JAELEN			
15:37				REBOUND (DEF) by LULL, JIMBO
15:30				MISSED 3PTR by SHABAZZ, KHALIL
15:26	REBOUND (DEF) by VALTONEN, ELIAS			
15:18	MISSED JUMPER by HOUSE, JAELEN			
15:17				REBOUND (DEF) by BOUYEA, JAMAREE
15:17	FOUL (PERSONAL) by HOUSE, JAELEN			
14:59		42-41	H 1	GOOD! JUMPER by SHABAZZ, KHALIL [PNT]
14:35	GOOD! 3PTR by VALTONEN, ELIAS	42-44	V 2	
14:35	ASSIST by MARTIN, REMY			
14:09		44-44	T	GOOD! LAYUP by SHABAZZ, KHALIL
13:59				FOUL (PERSONAL) by LULL, JIMBO
13:59	GOOD! FT by MARTIN, REMY	44-45	V 1	
13:59	SUB OUT: HOUSE, JAELEN			
13:59	SUB OUT: THOMAS, KHALID			
13:59	SUB IN: LAWRENCE, KIMANI			
13:59	SUB IN: VERGE JR. , ALONZO			
13:59	MISSED FT by MARTIN, REMY			
13:58				REBOUND (DEF) by LULL, JIMBO
13:51		47-45	H 2	GOOD! 3PTR by SHABAZZ, KHALIL

Time	VISITORS: Arizona State	Score	Margin	HOME: San Francisco
13:38	MISSED JUMPER by MARTIN, REMY			
13:31	REBOUND (OFF) by WHITE, ROMELLO			
13:31	GOOD! LAYUP by WHITE, ROMELLO	47-47	T	
13:26				MISSED LAYUP by SHABAZZ, KHALIL
13:22	REBOUND (DEF) by WHITE, ROMELLO			
13:18	MISSED JUMPER by MARTIN, REMY			
13:14				REBOUND (DEF) by RAITANEN, REMU
13:10	FOUL (PERSONAL) by VALTONEN, ELIAS			
13:10	SUB OUT: MARTIN, REMY			
13:10	SUB OUT: VALTONEN, ELIAS			
13:10	SUB IN: EDWARDS, ROB			
13:10	SUB IN: CHERRY, TAESHON			
12:51				MISSED JUMPER by RYUNY, DZMITRY
12:47	REBOUND (DEF) by LAWRENCE, KIMANI			
12:27	MISSED JUMPER by EDWARDS, ROB			
12:27				BLOCK by LULL, JIMBO
12:22				REBOUND (DEF) by RYUNY, DZMITRY
12:21		49-47	H 2	GOOD! LAYUP by BOUYEA, JAMAREE [FB]
11:55	MISSED LAYUP by VERGE JR. , ALONZO			
11:52				REBOUND (DEF) by LULL, JIMBO
11:48				MISSED LAYUP by SHABAZZ, KHALIL
11:43	REBOUND (DEF) by WHITE, ROMELLO			
11:40	GOOD! LAYUP by VERGE JR. , ALONZO	49-49	T	
11:40				FOUL (PERSONAL) by LULL, JIMBO
11:40				
11:40				SUB OUT: SHABAZZ, KHALIL
11:40				SUB OUT: BOUYEA, JAMAREE
11:40				SUB OUT: LULL, JIMBO
11:40				SUB OUT: RYUNY, DZMITRY
11:40				SUB IN: KUNEN, JOSH
11:40				SUB IN: ANDERSON, TREVANTE
11:40				SUB IN: MINLEND, CHARLES
11:40				SUB IN: RATINHO, JORDAN
11:40	SUB OUT: WHITE, ROMELLO			
11:40	SUB IN: GRAHAM, JALEN			
11:40	GOOD! FT by VERGE JR. , ALONZO	49-50	V 1	
11:21				MISSED JUMPER by RATINHO, JORDAN
11:20				REBOUND (OFF) by RATINHO, JORDAN
11:20	FOUL (PERSONAL) by GRAHAM, JALEN			
11:11				MISSED LAYUP by ANDERSON, TREVANTE
11:11	REBOUND (DEF) by TEAM			
11:05	MISSED JUMPER by VERGE JR. , ALONZO			
11:01	REBOUND (OFF) by CHERRY, TAESHON			
10:52	MISSED JUMPER by GRAHAM, JALEN			
10:49	REBOUND (OFF) by LAWRENCE, KIMANI			
10:35				FOUL (PERSONAL) by ANDERSON, TREVANTE
10:35	MISSED FT by GRAHAM, JALEN			
10:35	REBOUND (OFF) by TEAM			
10:35	GOOD! FT by GRAHAM, JALEN	49-51	V 2	
10:13				MISSED 3PTR by MINLEND, CHARLES
10:08	REBOUND (DEF) by VERGE JR. , ALONZO			
10:03	MISSED JUMPER by VERGE JR. , ALONZO			
09:59				REBOUND (DEF) by RAITANEN, REMU
09:52				MISSED JUMPER by MINLEND, CHARLES
09:48	REBOUND (DEF) by EDWARDS, ROB			
09:35	MISSED JUMPER by GRAHAM, JALEN			
09:31				REBOUND (DEF) by KUNEN, JOSH
09:22		52-51	H 1	GOOD! 3PTR by ANDERSON, TREVANTE
09:22				TIMEOUT 30SEC
09:22				SUB OUT: RAITANEN, REMU
09:22				SUB OUT: ANDERSON, TREVANTE
09:22				SUB IN: BOUYEA, JAMAREE
09:22				SUB IN: LULL, JIMBO
09:22	SUB OUT: EDWARDS, ROB			
09:22	SUB IN: MARTIN, REMY			
09:17	GOOD! 3PTR by LAWRENCE, KIMANI	52-54	V 2	
09:17	ASSIST by MARTIN, REMY			
09:02				MISSED 3PTR by RATINHO, JORDAN
08:58				REBOUND (OFF) by RATINHO, JORDAN
08:55		54-54	T	GOOD! LAYUP by MINLEND, CHARLES
08:40	MISSED JUMPER by VERGE JR. , ALONZO			
08:36				REBOUND (DEF) by KUNEN, JOSH
08:30				MISSED JUMPER by RATINHO, JORDAN
08:23				REBOUND (OFF) by KUNEN, JOSH
08:23		56-54	H 2	GOOD! LAYUP by KUNEN, JOSH
08:12	MISSED 3PTR by MARTIN, REMY			
08:06				REBOUND (DEF) by KUNEN, JOSH
08:03				TURNOVER (LOSTBALL) by KUNEN, JOSH
08:03	STEAL by MARTIN, REMY			
07:54				FOUL (PERSONAL) by KUNEN, JOSH

Time	VISITORS: Arizona State	Score	Margin	HOME: San Francisco
07:54				
07:54				SUB OUT: RATINHO, JORDAN
07:54				SUB IN: SHABAZZ, KHALIL
07:54	SUB OUT: VERGE JR. , ALONZO			
07:54	SUB OUT: GRAHAM, JALEN			
07:54	SUB IN: HOUSE, JAELEN			
07:54	SUB IN: WHITE, ROMELLO			
07:54	GOOD! LAYUP by CHERRY, TAESHON	56-56	T	
07:54	GOOD! FT by CHERRY, TAESHON	56-57	V 1	
07:48	FOUL (PERSONAL) by CHERRY, TAESHON			
07:31	FOUL (PERSONAL) by LAWRENCE, KIMANI			
07:31				MISSED FT by MINLEND, CHARLES
07:31				REBOUND (OFF) by TEAM
07:31				MISSED FT by MINLEND, CHARLES
07:30	REBOUND (DEF) by MARTIN, REMY			
07:16	TURNOVER (BADPASS) by MARTIN, REMY			
07:16				STEAL by LULL, JIMBO
06:53		58-57	H 1	GOOD! JUMPER by BOUYEA, JAMAREE
06:53	SUB OUT: WHITE, ROMELLO			
06:53	SUB IN: GRAHAM, JALEN			
06:49	TIMEOUT 30SEC			
06:34	TURNOVER (TRAVEL) by GRAHAM, JALEN			
06:16		60-57	H 3	GOOD! LAYUP by LULL, JIMBO
06:16				ASSIST by KUNEN, JOSH
06:01	GOOD! JUMPER by CHERRY, TAESHON [PNT]	60-59	H 1	
05:47				MISSED 3PTR by MINLEND, CHARLES
05:43	REBOUND (DEF) by GRAHAM, JALEN			
05:36	MISSED JUMPER by MARTIN, REMY			
05:33				REBOUND (DEF) by KUNEN, JOSH
05:33				SUB OUT: MINLEND, CHARLES
05:33				SUB IN: RATINHO, JORDAN
05:33	SUB OUT: MARTIN, REMY			
05:33	SUB IN: EDWARDS, ROB			
05:33	SUB OUT: LAWRENCE, KIMANI			
05:33	SUB IN: VALTONEN, ELIAS			
05:03				MISSED 3PTR by BOUYEA, JAMAREE
05:00	REBOUND (DEF) by CHERRY, TAESHON			
04:49	GOOD! 3PTR by EDWARDS, ROB	60-62	V 2	
04:19		62-62	T	GOOD! LAYUP by BOUYEA, JAMAREE
03:51	GOOD! DUNK by GRAHAM, JALEN	62-64	V 2	
03:51	ASSIST by HOUSE, JAELEN			
03:30		64-64	T	GOOD! LAYUP by KUNEN, JOSH
03:12	MISSED JUMPER by EDWARDS, ROB			
03:12				BLOCK by LULL, JIMBO
03:12	REBOUND (OFF) by EDWARDS, ROB			
03:12				FOUL (PERSONAL) by KUNEN, JOSH
03:12				
03:12				SUB OUT: SHABAZZ, KHALIL
03:12				SUB OUT: KUNEN, JOSH
03:12				SUB IN: RAITANEN, REMU
03:12				SUB IN: MINLEND, CHARLES
03:12	SUB OUT: HOUSE, JAELEN			
03:12	SUB OUT: GRAHAM, JALEN			
03:12	SUB IN: MARTIN, REMY			
03:12	SUB IN: WHITE, ROMELLO			
03:12	GOOD! FT by CHERRY, TAESHON	64-65	V 1	
03:12	GOOD! FT by CHERRY, TAESHON	64-66	V 2	
03:12	SUB OUT: CHERRY, TAESHON			
03:12	SUB IN: THOMAS, KHALID			
02:47				MISSED JUMPER by RATINHO, JORDAN
02:41				REBOUND (OFF) by LULL, JIMBO
02:41				MISSED LAYUP by LULL, JIMBO
02:40	REBOUND (DEF) by WHITE, ROMELLO			
02:26				FOUL (PERSONAL) by BOUYEA, JAMAREE
02:26	GOOD! FT by MARTIN, REMY	64-67	V 3	
02:26				SUB OUT: RATINHO, JORDAN
02:26				SUB IN: SHABAZZ, KHALIL
02:26	GOOD! FT by MARTIN, REMY	64-68	V 4	
02:26	SUB OUT: VALTONEN, ELIAS			
02:26	SUB IN: HOUSE, JAELEN			
02:08				MISSED LAYUP by MINLEND, CHARLES
02:08	BLOCK by THOMAS, KHALID			
02:01	REBOUND (DEF) by HOUSE, JAELEN			
01:56	MISSED 3PTR by HOUSE, JAELEN			
01:52				REBOUND (DEF) by LULL, JIMBO
01:49	FOUL (PERSONAL) by HOUSE, JAELEN			
01:49		65-68	V 3	GOOD! FT by BOUYEA, JAMAREE [FB]
01:49		66-68	V 2	GOOD! FT by BOUYEA, JAMAREE [FB]
01:49				SUB OUT: RAITANEN, REMU
01:49				SUB IN: KUNEN, JOSH

Time	VISITORS: Arizona State	Score	Margin	HOME: San Francisco
01:49				SUB OUT: MINLEND, CHARLES
01:49				SUB IN: RATINHO, JORDAN
01:29	GOOD! JUMPER by WHITE, ROMELLO [PNT]	66-70	V 4	
01:14				MISSED 3PTR by SHABAZZ, KHALIL
01:08				REBOUND (OFF) by BOUYEA, JAMAREE
01:06				TURNOVER (LOSTBALL) by KUNEN, JOSH
00:59	TURNOVER (LOSTBALL) by THOMAS, KHALID			
00:59				STEAL by RATINHO, JORDAN
00:59				TIMEOUT 30SEC
00:59				SUB OUT: KUNEN, JOSH
00:59				SUB IN: RAITANEN, REMU
00:51				MISSED 3PTR by RATINHO, JORDAN
00:47	REBOUND (DEF) by WHITE, ROMELLO			
00:36	MISSED LAYUP by HOUSE, JAELEN			
00:33				REBOUND (DEF) by RATINHO, JORDAN
00:20				MISSED JUMPER by BOUYEA, JAMAREE
00:20				REBOUND (OFF) by LULL, JIMBO
00:20				MISSED LAYUP by LULL, JIMBO
00:20				REBOUND (OFF) by LULL, JIMBO
00:20	FOUL (PERSONAL) by HOUSE, JAELEN			
00:20		67-70	V 3	GOOD! FT by LULL, JIMBO
00:20				MISSED FT by LULL, JIMBO
00:19	REBOUND (DEF) by WHITE, ROMELLO			
00:11	TURNOVER (LOSTBALL) by HOUSE, JAELEN			
00:11				STEAL by SHABAZZ, KHALIL
00:06				MISSED LAYUP by RATINHO, JORDAN
00:05	REBOUND (DEF) by THOMAS, KHALID			
00:05				FOUL (PERSONAL) by LULL, JIMBO
00:05	MISSED FT by THOMAS, KHALID			
00:05	REBOUND (OFF) by TEAM			
00:05	GOOD! FT by THOMAS, KHALID [FB]	67-71	V 4	
00:03				TIMEOUT TEAM
00:00				TURNOVER (BADPASS) by SHABAZZ, KHALIL
00:00	STEAL by THOMAS, KHALID			

Arizona State 71, San Francisco 67

Points from (This Period)	ASU	USF
In the Paint	12	22
Off Turns	3	9
2nd Chance	5	5
Fast Break	1	6
Bench	16	10

Official Scoring/Possession Reference Chart
Arizona State vs San Francisco
Period 1

December 03, 2019 at War Memorial at the Sobrato Center - San Francisco



Period 1

Starters:

Arizona State: 1 MARTIN, REMY (G); 2 EDWARDS, ROB (G); 5 VALTONEN, ELIAS (G); 20 THOMAS, KHALID (F); 23 WHITE, ROMELLO (F);

San Francisco: 1 BOUYEA, JAMAREE (G); 5 LULL, JIMBO (C); 10 KUNEN, JOSH (F); 14 MINLEND, CHARLES (G); 25 RATINHO, JORDAN (G);

Time	VISITORS: Arizona State	Score	Margin	HOME: San Francisco
19:29	GOOD! LAYUP by WHITE, ROMELLO	0-2	V 2	
18:39	GOOD! LAYUP by WHITE, ROMELLO	0-4	V 4	
17:53		1-4	V 3	GOOD! FT by MINLEND, CHARLES
17:53		2-4	V 2	GOOD! FT by MINLEND, CHARLES
16:18	GOOD! JUMPER by MARTIN, REMY	2-6	V 4	
16:03		5-6	V 1	GOOD! 3PTR by MINLEND, CHARLES
15:41	GOOD! LAYUP by MARTIN, REMY [PNT]	5-8	V 3	
14:42	GOOD! JUMPER by MARTIN, REMY	5-10	V 5	
13:47		7-10	V 3	GOOD! LAYUP by RAITANEN, REMU
13:30		10-10	T	GOOD! 3PTR by RYUNY, DZMITRY
12:57		13-10	H 3	GOOD! 3PTR by SHABAZZ, KHALIL
11:02	GOOD! LAYUP by GRAHAM, JALEN	13-12	H 1	
10:23	GOOD! JUMPER by LAWRENCE, KIMANI	13-14	V 1	
09:41		14-14	T	GOOD! FT by MINLEND, CHARLES
09:20		15-14	H 1	GOOD! FT by RATINHO, JORDAN [FB]
08:30	GOOD! JUMPER by GRAHAM, JALEN	15-16	V 1	
08:10		17-16	H 1	GOOD! JUMPER by KUNEN, JOSH
07:11	GOOD! FT by MARTIN, REMY [FB]	17-17	T	
07:11	GOOD! FT by MARTIN, REMY [FB]	17-18	V 1	
06:53	GOOD! JUMPER by MARTIN, REMY	17-20	V 3	
06:33		19-20	V 1	GOOD! JUMPER by LULL, JIMBO [PNT]
06:08	GOOD! LAYUP by LAWRENCE, KIMANI	19-22	V 3	
05:12	GOOD! FT by WHITE, ROMELLO	19-23	V 4	
05:12	GOOD! FT by WHITE, ROMELLO	19-24	V 5	
04:50	GOOD! LAYUP by THOMAS, KHALID	19-26	V 7	
04:35		20-26	V 6	GOOD! FT by SHABAZZ, KHALIL [FB]
04:35		21-26	V 5	GOOD! FT by SHABAZZ, KHALIL [FB]
04:22	GOOD! DUNK by WHITE, ROMELLO	21-28	V 7	
04:06		24-28	V 4	GOOD! 3PTR by SHABAZZ, KHALIL
03:15	GOOD! LAYUP by WHITE, ROMELLO	24-30	V 6	
02:59		25-30	V 5	GOOD! FT by KUNEN, JOSH
02:59		26-30	V 4	GOOD! FT by KUNEN, JOSH
01:55		28-30	V 2	GOOD! LAYUP by BOUYEA, JAMAREE
01:24	GOOD! 3PTR by CHERRY, TAESHON	28-33	V 5	
00:47		30-33	V 3	GOOD! LAYUP by BOUYEA, JAMAREE
00:31	GOOD! JUMPER by GRAHAM, JALEN	30-35	V 5	

Arizona State 35, San Francisco 30

Official Scoring/Possession Reference Chart
Arizona State vs San Francisco
Period 2

December 03, 2019 at War Memorial at the Sobrato Center - San Francisco



Period 2

Starters:

Arizona State: 1 MARTIN, REMY (G); 2 EDWARDS, ROB (G); 5 VALTONEN, ELIAS (G); 20 THOMAS, KHALID (F); 23 WHITE, ROMELLO (F);

San Francisco: 1 BOUYEA, JAMAREE (G); 5 LULL, JIMBO (C); 10 KUNEN, JOSH (F); 14 MINLEND, CHARLES (G); 25 RATINHO, JORDAN (G);

Time	VISITORS: Arizona State	Score	Margin	HOME: San Francisco
19:11		33-35	V 2	GOOD! 3PTR by BOUYEA, JAMAREE
18:06		36-35	H 1	GOOD! 3PTR by MINLEND, CHARLES
17:35		38-35	H 3	GOOD! LAYUP by BOUYEA, JAMAREE [FB]
17:19	GOOD! FT by MARTIN, REMY	38-36	H 2	
17:08		40-36	H 4	GOOD! LAYUP by KUNEN, JOSH
16:51	GOOD! JUMPER by EDWARDS, ROB	40-38	H 2	
16:27	GOOD! 3PTR by VALTONEN, ELIAS	40-41	V 1	
14:59		42-41	H 1	GOOD! JUMPER by SHABAZZ, KHALIL [PNT]
14:35	GOOD! 3PTR by VALTONEN, ELIAS	42-44	V 2	
14:09		44-44	T	GOOD! LAYUP by SHABAZZ, KHALIL
13:59	GOOD! FT by MARTIN, REMY	44-45	V 1	
13:51		47-45	H 2	GOOD! 3PTR by SHABAZZ, KHALIL
13:31	GOOD! LAYUP by WHITE, ROMELLO	47-47	T	
12:21		49-47	H 2	GOOD! LAYUP by BOUYEA, JAMAREE [FB]
11:40	GOOD! LAYUP by VERGE JR. , ALONZO	49-49	T	
11:40	GOOD! FT by VERGE JR. , ALONZO	49-50	V 1	
10:35	GOOD! FT by GRAHAM, JALEN	49-51	V 2	
09:22		52-51	H 1	GOOD! 3PTR by ANDERSON, TREVANTE
09:17	GOOD! 3PTR by LAWRENCE, KIMANI	52-54	V 2	
08:55		54-54	T	GOOD! LAYUP by MINLEND, CHARLES
08:23		56-54	H 2	GOOD! LAYUP by KUNEN, JOSH
07:54	GOOD! LAYUP by CHERRY, TAESHON	56-56	T	
07:54	GOOD! FT by CHERRY, TAESHON	56-57	V 1	
06:53		58-57	H 1	GOOD! JUMPER by BOUYEA, JAMAREE
06:16		60-57	H 3	GOOD! LAYUP by LULL, JIMBO
06:01	GOOD! JUMPER by CHERRY, TAESHON [PNT]	60-59	H 1	
04:49	GOOD! 3PTR by EDWARDS, ROB	60-62	V 2	
04:19		62-62	T	GOOD! LAYUP by BOUYEA, JAMAREE
03:51	GOOD! DUNK by GRAHAM, JALEN	62-64	V 2	
03:30		64-64	T	GOOD! LAYUP by KUNEN, JOSH
03:12	GOOD! FT by CHERRY, TAESHON	64-65	V 1	
03:12	GOOD! FT by CHERRY, TAESHON	64-66	V 2	
02:26	GOOD! FT by MARTIN, REMY	64-67	V 3	
02:26	GOOD! FT by MARTIN, REMY	64-68	V 4	
01:49		65-68	V 3	GOOD! FT by BOUYEA, JAMAREE [FB]
01:49		66-68	V 2	GOOD! FT by BOUYEA, JAMAREE [FB]
01:29	GOOD! JUMPER by WHITE, ROMELLO [PNT]	66-70	V 4	
00:20		67-70	V 3	GOOD! FT by LULL, JIMBO
00:05	GOOD! FT by THOMAS, KHALID [FB]	67-71	V 4	

Arizona State 71, San Francisco 67

Official Substitutions Log
Arizona State vs San Francisco
Period 1

December 03, 2019 at War Memorial at the Sobrato Center - San Francisco



VISITORS: Arizona State	Time	Score	HOME: San Francisco
1 MARTIN,REMY			1 BOUYEA,JAMAREE
2 EDWARDS,ROB			5 LULL,JIMBO
5 VALTONEN,ELIAS			10 KUNEN,JOSH
20 THOMAS,KHALID			14 MINLEND,CHARLES
23 WHITE,ROMELLO			25 RATINHO,JORDAN
	15:24	8-5	SUB OUT: KUNEN,JOSH
	15:24		SUB OUT: MINLEND,CHARLES
	15:24		SUB OUT: RATINHO,JORDAN
	15:24		SUB IN: SHABAZZ,KHALIL
	15:24		SUB IN: RAITANEN,REMU
	15:24		SUB IN: RYUNY,DZMITRY
SUB OUT: 2 EDWARDS,ROB	15:24		
SUB OUT: 5 VALTONEN,ELIAS	15:24		
SUB IN: 10 HOUSE,JAELLEN	15:24		
SUB IN: 11 VERGE JR. ,ALONZO	15:24		
	11:59	10-13	SUB OUT: BOUYEA,JAMAREE
	11:59		SUB OUT: LULL,JIMBO
	11:59		SUB IN: KUNEN,JOSH
	11:59		SUB IN: MINLEND,CHARLES
SUB OUT: 1 MARTIN,REMY	11:59		
SUB OUT: 11 VERGE JR. ,ALONZO	11:59		
SUB OUT: 20 THOMAS,KHALID	11:59		
SUB OUT: 23 WHITE,ROMELLO	11:59		
SUB IN: 2 EDWARDS,ROB	11:59		
SUB IN: 4 LAWRENCE,KIMANI	11:59		
SUB IN: 24 GRAHAM,JAELLEN	11:59		
SUB IN: 35 CHERRY,TAESHON	11:59		
	10:59	12-13	SUB OUT: RYUNY,DZMITRY
	10:59		SUB IN: RATINHO,JORDAN
	09:41	14-13	SUB OUT: SHABAZZ,KHALIL
	09:41		SUB IN: BOUYEA,JAMAREE
SUB OUT: 10 HOUSE,JAELLEN	09:41		
SUB OUT: 35 CHERRY,TAESHON	09:41		
SUB IN: 1 MARTIN,REMY	09:41		
SUB IN: 5 VALTONEN,ELIAS	09:41		
	09:41		SUB OUT: MINLEND,CHARLES
	09:41		SUB IN: ANDERSON,TREVANTE
SUB OUT: 24 GRAHAM,JAELLEN	07:31	16-17	
SUB IN: 35 CHERRY,TAESHON	07:31		
	07:31		SUB OUT: KUNEN,JOSH
	07:31		SUB IN: LULL,JIMBO
SUB OUT: 35 CHERRY,TAESHON	07:31		
SUB IN: 23 WHITE,ROMELLO	07:31		
SUB OUT: 1 MARTIN,REMY	05:19	22-19	
SUB OUT: 2 EDWARDS,ROB	05:19		
SUB OUT: 4 LAWRENCE,KIMANI	05:19		
SUB IN: 10 HOUSE,JAELLEN	05:19		
SUB IN: 11 VERGE JR. ,ALONZO	05:19		
SUB IN: 20 THOMAS,KHALID	05:19		
	05:12	22-19	SUB OUT: RAITANEN,REMU
	05:12		SUB OUT: ANDERSON,TREVANTE
	05:12		SUB OUT: RATINHO,JORDAN
	05:12		SUB IN: SHABAZZ,KHALIL
	05:12		SUB IN: KUNEN,JOSH
	05:12		SUB IN: MINLEND,CHARLES
	02:59	30-24	SUB OUT: SHABAZZ,KHALIL
	02:59		SUB OUT: MINLEND,CHARLES
	02:59		SUB IN: RYUNY,DZMITRY
	02:59		SUB IN: RATINHO,JORDAN
SUB OUT: 5 VALTONEN,ELIAS	02:59		
SUB OUT: 10 HOUSE,JAELLEN	02:59		
SUB OUT: 20 THOMAS,KHALID	02:59		
SUB IN: 1 MARTIN,REMY	02:59		
SUB IN: 2 EDWARDS,ROB	02:59		
SUB IN: 35 CHERRY,TAESHON	02:59		
	02:59		SUB OUT: KUNEN,JOSH
	02:59		SUB IN: RAITANEN,REMU
SUB OUT: 23 WHITE,ROMELLO	02:03	30-26	
SUB IN: 24 GRAHAM,JAELLEN	02:03		

Arizona State 35, San Francisco 30

Official Substitutions Log
Arizona State vs San Francisco
Period 2

December 03, 2019 at War Memorial at the Sobrato Center - San Francisco



VISITORS: Arizona State	Time	Score	HOME: San Francisco
1 MARTIN,REMY			1 BOUYEA,JAMAREE
2 EDWARDS,ROB			5 LULL,JIMBO
5 VALTONEN,ELIAS			10 KUNEN,JOSH
20 THOMAS,KHALID			14 MINLEND,CHARLES
23 WHITE,ROMELLO			25 RATINHO,JORDAN
	20:00	-	SUB OUT: RAITANEN,REMU
	20:00		SUB OUT: RYUNY,DZMITRY
	20:00		SUB IN: KUNEN,JOSH
	20:00		SUB IN: MINLEND,CHARLES
SUB OUT: 11 VERGE JR.,ALONZO	20:00		
SUB OUT: 24 GRAHAM,JALEN	20:00		
SUB OUT: 35 CHERRY,TAESHON	20:00		
SUB IN: 5 VALTONEN,ELIAS	20:00		
SUB IN: 20 THOMAS,KHALID	20:00		
SUB IN: 23 WHITE,ROMELLO	20:00		
	17:19	35-38	SUB OUT: MINLEND,CHARLES
	17:19		SUB IN: SHABAZZ,KHALIL
SUB OUT: 2 EDWARDS,ROB	16:19	41-40	
SUB IN: 10 HOUSE,JAELEN	16:19		
	15:57	41-40	SUB OUT: KUNEN,JOSH
	15:57		SUB OUT: RATINHO,JORDAN
	15:57		SUB IN: RAITANEN,REMU
	15:57		SUB IN: RYUNY,DZMITRY
SUB OUT: 10 HOUSE,JAELEN	13:59	45-44	
SUB OUT: 20 THOMAS,KHALID	13:59		
SUB IN: 4 LAWRENCE,KIMANI	13:59		
SUB IN: 11 VERGE JR.,ALONZO	13:59		
SUB OUT: 1 MARTIN,REMY	13:10	47-47	
SUB OUT: 5 VALTONEN,ELIAS	13:10		
SUB IN: 2 EDWARDS,ROB	13:10		
SUB IN: 35 CHERRY,TAESHON	13:10		
	11:40	49-49	SUB OUT: SHABAZZ,KHALIL
	11:40		SUB OUT: BOUYEA,JAMAREE
	11:40		SUB OUT: LULL,JIMBO
	11:40		SUB OUT: RYUNY,DZMITRY
	11:40		SUB IN: KUNEN,JOSH
	11:40		SUB IN: ANDERSON,TREVANTE
	11:40		SUB IN: MINLEND,CHARLES
	11:40		SUB IN: RATINHO,JORDAN
SUB OUT: 23 WHITE,ROMELLO	11:40		
SUB IN: 24 GRAHAM,JALEN	11:40		
	09:22	51-52	SUB OUT: RAITANEN,REMU
	09:22		SUB OUT: ANDERSON,TREVANTE
	09:22		SUB IN: BOUYEA,JAMAREE
	09:22		SUB IN: LULL,JIMBO
SUB OUT: 2 EDWARDS,ROB	09:22		
SUB IN: 1 MARTIN,REMY	09:22		
	07:54	54-56	SUB OUT: RATINHO,JORDAN
	07:54		SUB IN: SHABAZZ,KHALIL
SUB OUT: 11 VERGE JR.,ALONZO	07:54		
SUB OUT: 24 GRAHAM,JALEN	07:54		
SUB IN: 10 HOUSE,JAELEN	07:54		
SUB IN: 23 WHITE,ROMELLO	07:54		
SUB OUT: 23 WHITE,ROMELLO	06:53	57-58	
SUB IN: 24 GRAHAM,JALEN	06:53		
	05:33	59-60	SUB OUT: MINLEND,CHARLES
	05:33		SUB IN: RATINHO,JORDAN
SUB OUT: 1 MARTIN,REMY	05:33		
SUB IN: 2 EDWARDS,ROB	05:33		
SUB OUT: 4 LAWRENCE,KIMANI	05:33		
SUB IN: 5 VALTONEN,ELIAS	05:33		
	03:12	64-64	SUB OUT: SHABAZZ,KHALIL
	03:12		SUB OUT: KUNEN,JOSH
	03:12		SUB IN: RAITANEN,REMU
	03:12		SUB IN: MINLEND,CHARLES
SUB OUT: 10 HOUSE,JAELEN	03:12		
SUB OUT: 24 GRAHAM,JALEN	03:12		
SUB IN: 1 MARTIN,REMY	03:12		
SUB IN: 23 WHITE,ROMELLO	03:12		
SUB OUT: 35 CHERRY,TAESHON	03:12		
SUB IN: 20 THOMAS,KHALID	03:12		
	02:26	67-64	SUB OUT: RATINHO,JORDAN
	02:26		SUB IN: SHABAZZ,KHALIL
SUB OUT: 5 VALTONEN,ELIAS	02:26		
SUB IN: 10 HOUSE,JAELEN	02:26		

VISITORS: Arizona State		Time	Score	HOME: San Francisco
		01:49	68-66	SUB OUT: RAITANEN, REMU
		01:49		SUB IN: KUNEN, JOSH
		01:49		SUB OUT: MINLEND, CHARLES
		01:49		SUB IN: RATINHO, JORDAN
		00:59	70-66	SUB OUT: KUNEN, JOSH
		00:59		SUB IN: RAITANEN, REMU

Arizona State 71, San Francisco 67

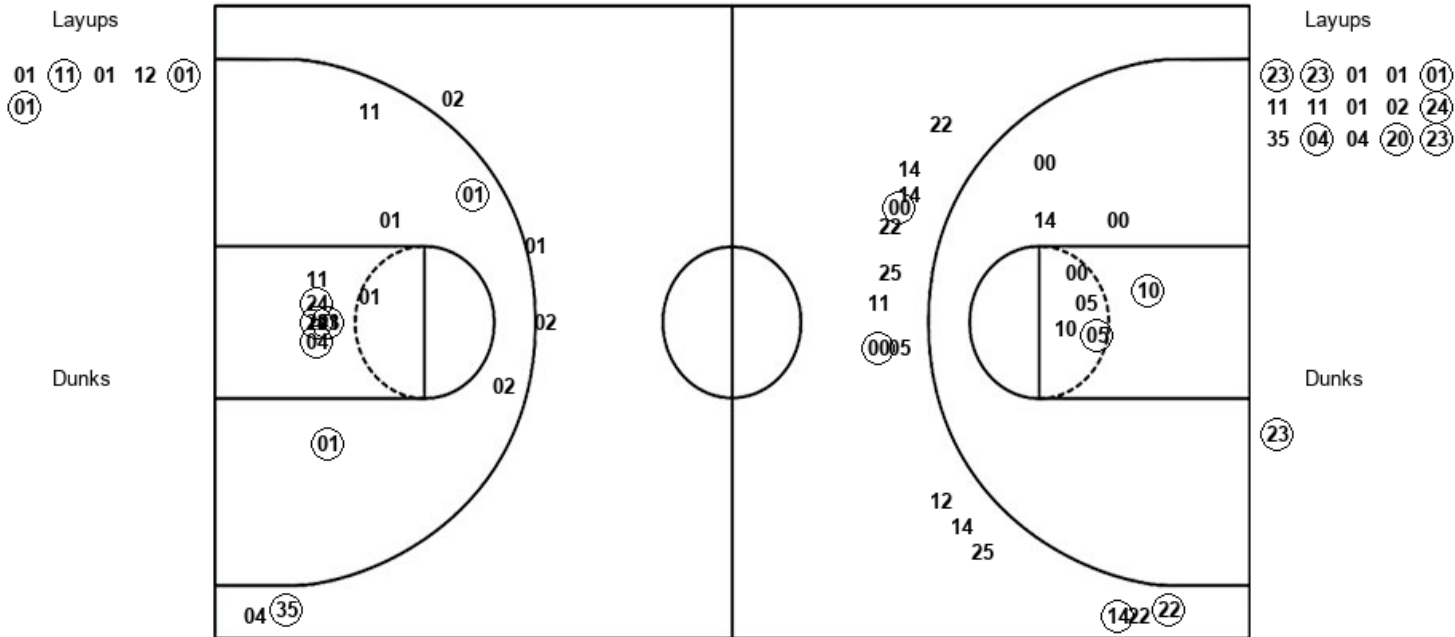
Official Shot Chart
Arizona State vs San Francisco
 PERIOD 1 Shots

December 03, 2019 at War Memorial at the Sobrato Center - San Francisco



San Francisco

Arizona State



USF : Period 1	Made	Att	Pct
Layups	3	6	50.0
Dunks	0	0	0
2PT Field Goals	5	14	35.7
3PT Field Goals	4	15	26.7
Total Field Goals	9	29	31.0

ASU : Period 1	Made	Att	Pct
Layups	7	15	46.7
Dunks	1	1	100.0
2PT Field Goals	14	28	50.0
3PT Field Goals	1	5	20.0
Total Field Goals	15	33	45.5

Official Shot Chart
Arizona State vs San Francisco
 PERIOD 2 Shots

December 03, 2019 at War Memorial at the Sobrato Center - San Francisco

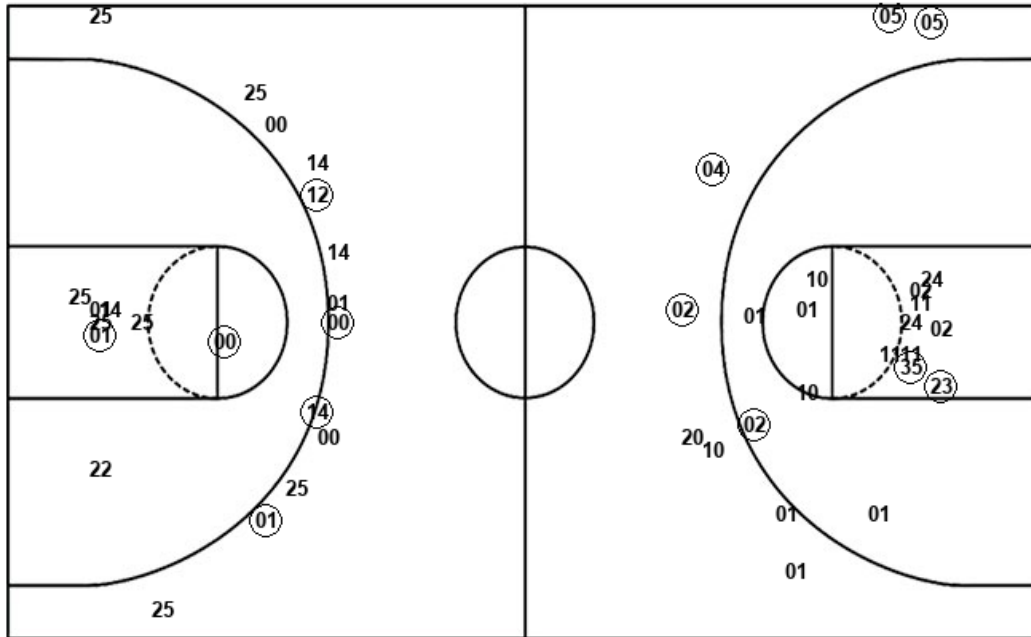


San Francisco

Arizona State

Layups
 (01) (10) (00) 00 (01)
 00 12 (14) (10) (05)
 (01) (10) 05 14 05
 25

Dunks



Layups
 (23) 11 (11) (35) 10

Dunks

USF : Period 2	Made	Att	Pct
Layups	9	16	56.3
Dunks	0	0	0
2PT Field Goals	11	24	45.8
3PT Field Goals	4	13	30.8
Total Field Goals	15	37	40.5

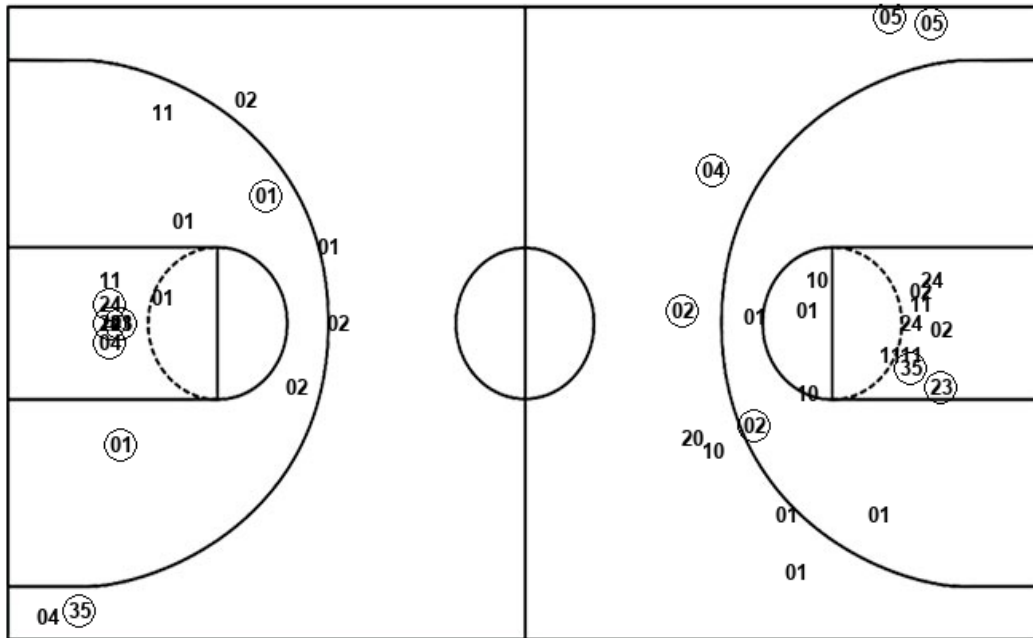
ASU : Period 2	Made	Att	Pct
Layups	3	5	60.0
Dunks	1	1	100.0
2PT Field Goals	7	22	31.8
3PT Field Goals	4	7	57.1
Total Field Goals	11	29	37.9

Official Shot Chart
Arizona State vs San Francisco
 Arizona State Team Shots
 December 03, 2019 at War Memorial at the Sobrato Center - San Francisco



Layups

Dunks



Layups

Dunks

(23) (23) 01 01 (01)
 11 11 01 02 (24)
 35 (04) 04 (20) (23)
 (23) 11 (11) (35) 10

(23) (24)

ASU : Period 1	Made	Att	Pct
Layups	7	15	46.7
Dunks	1	1	100.0
2PT Field Goals	14	28	50.0
3PT Field Goals	1	5	20.0
Total Field Goals	15	33	45.5

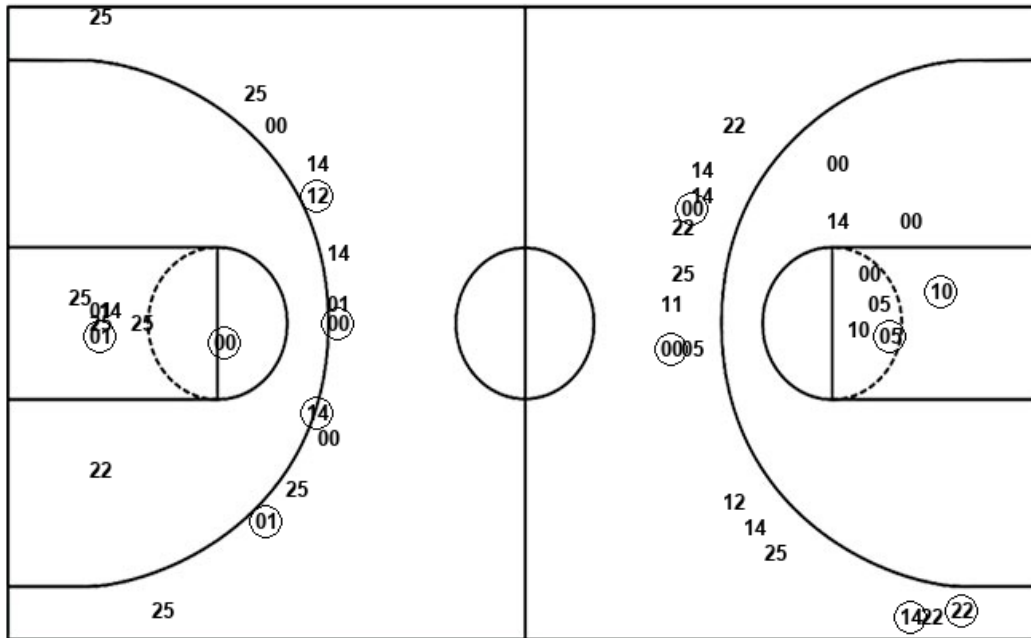
ASU : Period 2	Made	Att	Pct
Layups	3	5	60.0
Dunks	1	1	100.0
2PT Field Goals	7	22	31.8
3PT Field Goals	4	7	57.1
Total Field Goals	11	29	37.9

Official Shot Chart
Arizona State vs San Francisco
 San Francisco Team Shots
 December 03, 2019 at War Memorial at the Sobrato Center - San Francisco



Layups

Dunks



Layups

Dunks

01 (11) 01 12 (01)
 (01) (01) (10) (00) 00
 (01) 00 12 (14) (10)
 (05) (01) (10) 05 14
 05 25

USF : Period 1	Made	Att	Pct
Layups	3	6	50.0
Dunks	0	0	0
2PT Field Goals	5	14	35.7
3PT Field Goals	4	15	26.7
Total Field Goals	9	29	31.0

USF : Period 2	Made	Att	Pct
Layups	9	16	56.3
Dunks	0	0	0
2PT Field Goals	11	24	45.8
3PT Field Goals	4	13	30.8
Total Field Goals	15	37	40.5