

2023-24 SUN DEVIL WBB GAME NOTES

2023-24 Schedule/Results (6-2, 0-0 Pac-12)

DAY & DATE	OPPONENT	TIME/RESULT
MON., NOV. 6	UTSA (ASU Live Stream)	W, 70-55
FRI., NOV. 10	MONTANA STATE (ASU Live Stream)	W, 75-62
MON., NOV. 13	SAN FRANCISCO (ASU Live Stream)	W, 77-69
<u>Pac-12/SWAC Legacy Series</u>		
Thurs., Nov. 16	at Grambling State	L, 67-70
SUN., NOV. 19	IDAHO STATE (ASU Live Stream)	W, 72-40
<u>Virgin Islands Paradise Jam (Nov. 23-25/ St. Thomas, U.S. Virgin Islands)</u>		
Thurs., Nov. 23	vs. No. 12/11 Texas (ESPN+)	L, 42-84
Fri., Nov. 24	vs. South Florida (ESPN+)	W, 66-49
Sat., Nov. 25	vs. High Point (ESPN+)	W, 77-69

BRIANN JANUARY CLASSIC DEC. 1-2/TEMPE, ARIZ.

Fri., Dec. 1	Xavier vs Temple	4 p.m. MST
FRI., DEC. 1	ASU VS. PACIFIC (Pac-12 Arizona)	7 P.M. MST
Sat., Dec. 2	Temple vs Pacific	1 p.m. MST
SAT., DEC. 2	ASU VS. XAVIER (ASU Live Stream)	4 P.M. MST

FRI., DEC. 8	GRAND CANYON (ASU Live Stream)	1 P.M. MST
SUN., DEC. 17	ARIZONA* (Pac-12 Networks)	5 P.M. MST

Jerry Colangelo's 2023 Hall of Fame Series, Phoenix, Ariz.

Wed., Dec. 20	vs. Fresno State (Pac-12 Networks)	12 p.m. MST
---------------	------------------------------------	-------------

SAT., DEC. 30	SANTA CLARA (ASU Live Stream)	1 P.M. MST
----------------------	--------------------------------------	-------------------

FRI., JAN. 5	UTAH* (Pac-12 Networks)	7 P.M. MST
SUN., JAN. 7	COLORADO* (Pac-12 Networks)	12 P.M. MST

Fri., Jan. 12	at Oregon* (Pac-12 Networks)	8 p.m. MST/7 p.m. PST
Sun., Jan. 14	at Oregon State* (Pac-12 Networks)	1 p.m. MST/12 p.m. PST

Fri., Jan. 19	at Washington State* (Pac-12 Networks)	8 p.m. MST/7 p.m. PST
Sun., Jan. 21	at Washington* (Pac-12 Networks)	1 p.m. MST/12 p.m. PST

FRI., JAN. 26	STANFORD* (Pac-12 Networks)	6 P.M. MST
SUN., JAN. 28	CAL* (Pac-12 Networks)	12 P.M. MST

Sun., Feb. 4	at Arizona* (Pac-12 Networks)	12 p.m. MST
--------------	-------------------------------	-------------

Fri., Feb. 9	at USC* (Pac-12 Networks)	8 p.m. MST/7 p.m. PST
Sun., Feb. 11	at UCLA* (Pac-12 Networks)	1 p.m. MST/12 p.m. PST

FRI., FEB. 16	WASHINGTON* (Pac-12 Networks)	6 P.M. MST
SUN., FEB. 18	WASHINGTON STATE* (Pac-12 Networks)	12 P.M. MST

Fri., Feb. 23	at Cal* (Pac-12 Networks)	8 p.m. MST/7 p.m. PST
Sun., Feb. 25	at Stanford* (Pac-12 Networks)	1 p.m. MST/12 p.m. PST

THURS., FEB. 29	UCLA* (Pac-12 Networks)	7 P.M. MST
SAT., MAR. 2	USC* (Pac-12 Networks)	12 P.M. MST

2024 Pac-12 Women's Basketball Tournament

Mar. 6, 7, 8, 10	TBD	TBD
------------------	-----	-----

Home games (listed in **BOLD CAPS**) played at Desert Financial Arena.

* - Pac-12 Game

Game Nos. 9-10

Briann January Classic

Arizona State (6-2) vs. Pacific (4-2)

Fri., Dec. 1st, 2023 • 7 p.m. MST • Desert Financial Arena • Tempe, Ariz.
Pac-12 Arizona • KDUS AM 1060

Arizona State (6-2) vs. Xavier (0-6)

Sat., Dec. 2nd, 2023 • 4 p.m. MST • Desert Financial Arena • Tempe, Ariz.
ASU Live Stream • KDUS AM 1060

UP NEXT

The Sun Devil women's basketball team (6-2) begins a month in which it will play all six of its games in Tempe (five games) or downtown Phoenix (one game) when it faces Pacific (Friday at 7 p.m. MST) and Xavier (Saturday at 4 p.m. MST) in the second annual Briann January Classic. ASU will play in the second game of doubleheaders each day. On Friday, ASU's contest will be preceded by Temple vs. Xavier at 4 p.m. MST. On Saturday, Pacific and Temple will start the final day of the event at 1 p.m. MST.

WATCH/LISTEN

Friday's game vs. Pacific can be seen on Pac-12 Arizona (Cindy Brunson, Charli Turner Thorne). Saturday's game vs. Xavier will be on ASU's Live Stream. Both games can also be heard on KDUS AM 1060 (pregame coverage starts 30 minutes prior to each game). Veteran broadcaster and the state of Arizona's 2010 & 2019 Broadcaster of the Year and currently a finalist for the 2023 award, Jeff Munn is in his 20th season as the voice of ASU women's basketball. He'll be joined by Maura McHugh (color analyst).

ABOUT THE BRIANN JANUARY CLASSIC

The second edition of this annual event is named for Briann January, a four-year member Sun Devil Women's Basketball (2006-09). Her play helped catapult ASU into one of the nation's best on an annual basis.

The winner of the first two Pac-10 Defensive Player of the Year awards (2008 and 2009), January earned honorable mention All-America recognition from the Associated Press and WBCA in 2009. During her career, the Sun Devils won 77 percent of their overall games (104-32), 82 percent of their Pac-10 games (59-13) and qualified for the NCAA Tournament all four years, including ASU's only two Elite Eight appearances (2007, '09).

January was drafted by the Indiana Fever with the sixth overall pick in the 2009 WNBA draft. She won a WNBA championship with the Fever in 2012 and was selected to play in the 2014 WNBA All-Star Game. January also played for the Phoenix Mercury, Connecticut Sun and Seattle Storm during her 14-year WNBA career. She earned WNBA All-Defensive first-team recognition five times and second-team honors twice.

In November 2021, January, currently an assistant coach for the WNBA's Connecticut Sun, became the third Sun Devil women's basketball player to have her jersey – No. 20 – honored and hung from the rafters of Desert Financial Arena. In October 2022, January became the most recent women's basketball player inducted into the Sun Devil Athletics Hall of Fame.

PAC-12 RANKINGS OF NOTE (AS OF NOV. 29, 2023)

- As a team, ASU leads the Pac-12 in FT attempts per game (22.6/34th in the nation) and is 3rd (48th in the nation) in FTs made per game (15.3) and fewest turnovers per game (15.3).
- Jaddan Simmons leads the Pac-12 lead in FT attempts (50/4th in the nation), is 2nd in FTs made (41/7th in the nation), 3rd in minutes per game (33.38), 9th in FT pct. (82.0) & steals per game (2.1) and 16th in assist-to-TO ratio (1.73).
- Trayanna Crisp is 12th in the Pac-12 in minutes per game (31.91).
- Journey Thompson is tied for 14th in offensive rebs per game (2.25).

SUN DEVIL

W O M E N ' S B A S K E T B A L L

2023-24 SUN DEVIL WBB GAME NOTES

SUN DEVIL WBB 2023-24 QUICK FACTS

School Information

Location	Tempe, Ariz.
Founded	1885
Enrollment.....	103,410
Nickname	Sun Devils
Colors	Maroon and Gold
Conference	Pac-12
Arena (Capacity).....	Desert Financial Arena (14,100)
President	Dr. Michael Crow
Interim Athletics Director	Jim Rund
WBB Administrators ...	Christina Wombacher (Sr. Associate AD/SWA)
.....	Natesh Rao (Sr. Associate AD)

Staff

Head Coach	Natasha Adair (2nd season)
Record at ASU (seasons)	14-22 (2nd season)
Career record (seasons)	181-165 (12th season)
Associate Head Coach	Darrell Mosley (2nd season)
Assistant Coach/Recruiting Coordinator ...	Mykala Walker (2nd season)
Assistant Coach	Camille Collier (2nd season)
Special Asst. to the Head Coach.....	Yvonne Sanchez (1st season)
Director of Operations	Carter Caplan (2nd season)
Asst. Director of Operations.....	Lizzie Oleary (2nd season)

Media Relations Contacts

Associate SID	Steve Rodriguez
Cell/Email	480-254-2489 / steve.rodriguez@asu.edu
Sr. Associate AD, Media Relations	Doug Tammaro
Cell/Email	480-734-7795 / tammaro@asu.edu

Returns

#2	Jaddan Simmons	G	5-9	Sr.
#4	Trayanna Crisp	G	5-8	So.
#11	Maggie Besselink	G/F	6-3	Sr.
#12	Treasure Hunt	G	6-2	Sr.
#22	Journey Thompson	F	6-3	So.
#30	Morasha Wiggins	G	6-0	Jr.
#44	Isadora Sousa	G	6-0	Grad.

Newcomers

#1	Kadidia Toure	F	6-3	So.
#10	Marina Radocaj	G/F	6-2	Fr.
#13	Sandra Magolico	F	6-2	Jr.
#20	Kiley Sours-Miller	C	6-4	Fr.
#21	Hanna Miller	F	6-2	So.
#23	Jalyn Brown	G	6-1	So.
#24	Mallory Miller	F	6-4	Fr.
#25	Adison Novosel	G	5-11	Jr.

Will miss 2023-24 due to injury (both returns)

#0	Jaylah Robinson	G	5-11	Fr.
#3	Tyi Skinner	G	5-5	Jr.

Pronunciation Guide

Natasha Adair – A-dare
Maggie Besselink – Bessel-ink
Jalyn Brown – Jay-lynn
Trayanna Crisp – Tray-on-nah
Sandra Magolico – Sahn-dra Mag-oh-leek-oh
Adison Novosel – No-vuh-sell
Marina Radocaj – Maude-E-nuh Rahd-oh-chai
Jaylah Robinson – Jay-luh
Jaddan Simmons – Jade-en
Tyi Skinner – Tie
Isadora Sousa – So-za
Kadidia Toure – kuh-DEE-shuh TORE-ay
Morasha Wiggins – more-AH-shuh

NOTES FROM LAST WEEK'S VIRGIN ISLANDS PARADISE JAM

• After starting the three-games-in-three-days event with a setback against current No. 10 Texas, the Sun Devils bounced back in impressive fashion with wins over 2023 NCAA Tournament participant South Florida (66-49) and 2023 WNIT participant High Point (77-69).

• Treasure Hunt and Jalyn Brown were both named to the Reef Division All-Tournament Team of the Paradise Jam. Hunt averaged 14.7 ppg and found her shooting touch to the tune of 56 percent (19-34 FGs), including 50 percent (5-10) from long distance. In ASU's two wins, Brown connected on 54 percent of her shots (13-24) and led the team in scoring (17.0 ppg). In ASU's win over South Florida, Brown scored 10 of her 14 points and hit both of her 3-pointers during a game-changing third quarter in which ASU outscored South Florida 24-6. She added a game-high 20 points in ASU's win over High Point to close out the tournament.

• In the win over South Florida, Trayanna Crisp (career high-tying 17 points), Hunt and Brown (14 points each) combined for 45 of ASU's points. Hunt and Sandra Magolico (first career start) each made their first start of the season while Brown, who started the first two games of the season, was back among the first five for the first time since an injury caused her to miss two games. Magolico's impact was swift as she scored eight points and – equally if not more important – led ASU's rebounding effort with eight boards and also tied for the team lead in steals with three.... Maggie Besselink (six rebounds, two assists) and Kadidia Toure (nine points, six rebounds) all played a starring role in helping the Sun Devils finish plus-six on the boards (38-32) against a South Florida squad that entered the game among the Top 50 teams in the nation in rebounding margin (+10.8)... Another category where the Sun Devils (5-2) had a 180-degree turnaround from their performance vs. Texas was in turnovers where they tied a season low with 11 and converted those miscues into 17 points. Jaddan Simmons had a team-high four assists (zero turnovers) and also tied for the team lead with three steals.

• Against High Point, Brown's 20 points represented a new career high, while Hunt just missed a double-double with season highs in points (19) and rebounds (game-high eight boards). Simmons provided ASU with a solid all-around effort, scoring nine points (2-3 FGs, 5-6 FTs), grabbing six rebounds and dishing out three assists... As a team, ASU shot 50 percent for the game, the first time it shot 50 percent or higher since a win at San Diego on Dec. 18, 2021.... ASU led by as many as 12 points in the first quarter, then spent the last 30 minutes trying to ward off the pesky Panthers, who got within a single possession a number of times, the last instance after a High Point layup cut ASU's lead to 55-52 with 8:18 remaining. ASU countered with five straight points – a jumper by Brown and a 3-pointer by Hunt – and then answered another High Point bucket with Hunt's second 3-pointer in 38 seconds to extend its lead to 63-54 with under five minutes remaining.

SERIES NOTES VERSUS THE COMPETITION

• Despite the relative proximity of the two schools, this will be only the third all-time meeting between ASU and Pacific. ASU claimed the first game, 90-65, on Nov. 20, 1982 at the Straw Hat Classic in San Luis Obispo, Calif. The Tigers ended ASU's 2011-12 season with a 77-62 home win in the first round of the 2012 postseason WNIT.

• It will also be the third all-time meeting between ASU and Xavier. ASU was victorious 75-57 in 2008 in Tempe and Xavier held serve on its home court the following year in Cincinnati... The first meeting came during Briann January's senior year, a season that culminated with Sun Devil Women's Basketball's second NCAA Elite Eight in three seasons. January scored a game-high 16 points, tied her career high with nine assists and had three steals in the win.

SUN DEVIL

W O M E N ' S B A S K E T B A L L

2023-24 SUN DEVIL WBB GAME NOTES

WHAT TO LOOK FOR

- In its first eight games, ASU has had five different players lead or tie for the team lead in scoring: Jaddan Simmons (3x), Kadidia Toure (3x), Trayanna Crisp (3x), Jalyn Brown (1x) and Treasure Hunt (1x).
- In the rebounding department, six different Sun Devils have led or tied for the team lead: Maggie Besselink (4x), Journey Thompson (2x), Toure (1x), Mallory Miller (1x), Sandra Magolico (1x), Hunt (1x).
- Simmons (935 points) is 65 points away from reaching 1000 for her career. Not including ASU's game vs. Texas, Simmons has 25 assists and only seven turnovers in ASU's other seven games.
- Crisp has scored a career-high 17 points twice this season and has scored in double figures in all but one game.
- Hunt last four games: 12.8 ppg 56.4 FG percent (22-39).
- During earlier three-game stretch (game Nos. 2-4), Toure averaged 19.0 ppg and 9.3 rebs per game. She posted her first career double-double with career highs in points (22) and rebounds (14) to go with 3 steals vs. San Francisco (Nov. 13). Toure leads ASU in FG pct. (50.3).

IN CASE YOU ARE JUST JOINING US

- ASU started 3-0 after home wins over UTSA (70-55/Nov. 6), Montana State (75-62/Nov. 10) & San Francisco (77-69/Nov. 13). In the first half of its first three wins, ASU averaged 45.3 points & hit 49.5 pct of its shots. In the win vs. UTSA, ASU tied last season's highest point total in a half on its way to a 49-23 halftime lead. Against Montana State (Nov. 30), ASU scored 30 points in the first quarter, representing the third time it has scored 30 or more points in a quarter under head coach Natasha Adair.
- In its loss at Grambling State (Nov. 16), ASU scored 32 points and shot 38 pct. in the first half while allowing the Tigers to score 45 points. Down by as many as 17, ASU came back to tie the game at 67-67 before the Tigers hit game-winning 3-pointer in final seconds.
- ASU is averaging 17.5 ppg off opponent turnovers this season. It scored a season-high 31 points off TOs at Grambling State (Nov. 16).
- ASU has allowed 13 or fewer points in a quarter 11 times, including four instances in single digits.
- After Montana State cut a 20-point deficit to four with seven mins remaining in the game, ASU answered with a 10-0 run. It allowed the Bobcats to shoot just 17 percent (2-12) in the fourth quarter.
- After allowing 70 points in its first loss of the season at Grambling State (70-67 on Nov. 16), ASU responded with a 72-40 win over Idaho State. The Bengals' final point total was the fewest given up by ASU since a 49-40 win over VCU on November 27, 2020.
- After a minus-15 outing on the boards (47-32) in 84-42 loss to then-No. 12 Texas (Nov. 23), less than 24 hours later ASU had to face a South Florida squad that entered the game among the Top 50 teams in the nation in rebounding margin (+10.8). ASU rose to the challenge and outrebounded the Bulls 38-32 in its 66-49 win.
- ASU scored a double-digit point total in each of first 20 quarters. Overall, it has scored in double figures in 30 of 32 quarters.

WELCOME BACK

Maggie Besselink and Morasha Wiggins have both provided ASU with significant contributions this season. What distinguishes them from the other returning players? Both missed all of last season due to injury. Besselink, who had not played in a game since Feb. 6, 2022, was not only in the starting lineup in the season opener, but ignited ASU's offense after hitting back-to-back triples in the first quarter vs. UTSA. She scored 11 points and grabbed a game-high 10 rebounds to post her second career double-double at Grambling State on Nov. 16. She also scored 10 points in wins vs. UTSA and Idaho State.

Wiggins made her Sun Devil debut in ASU's win over San Francisco (Nov. 13), scoring 8 points and hitting all 4 of her free throws. She is averaging 12.6 minutes per game in the 6 games she has played and has made 50 percent of her shots (6-12).

SCORING HIGHS / LOWS BY ASU IN 2023-24

Most points (Game)

77 - (2x) last vs. High Point (N) - 11.25.23
75 - vs. Montana State - 11.10.23
72 - vs. Idaho State - 11.19.23

Fewest points (Game)

42 - vs. Texas (N) - 11.23.23
66 - vs. South Florida (N) - 11.24.23
67 - @Grambling State - 11.16.23

Most points (Quarter)

30 - vs. Montana State (1st) - 11.10.23
25 - vs. UTSA (1st) - 11.6.23
24 - (3x) last vs. High Point (N) - (4th) - 11.25.23

Fewest points (Quarter)

6 - vs. Texas (N) - (3rd) - 11.23.23
8 - vs. Texas (N) - (1st) - 11.23.23
10 - vs. UTSA (3rd) - 11.6.23

Most points (1st half)

49 - vs. UTSA - 11.6.22
45 - vs. Montana State 11.10.23
42 - vs. San Francisco

Fewest points (1st half)

23 - vs. Texas (N) - 11.23.23
24 - vs. High Point (N) - 11.25.23
32 - (2x) last vs. Idaho State - 11.19.23

Most points (2nd half)

42 - vs. South Florida (N) - 11.24.23
40 - vs. Idaho State - 11.19.23
38 - vs. High Point (N) - 11.25.23

Fewest points (2nd half)

19 - vs. Texas (N) - 11.23.23
21 - vs. UTSA - 11.6.23
30 - vs. Montana State - 11.10.23

SCORING HIGHS / LOWS BY OPPONENT IN 2023-24

Most points (Game)

84 - vs. Texas - 11.23.23
70 - @Grambling State - 11.16.23
69 - (2x) last vs. High Point - 11.25.23

Fewest points (Game)

40 - vs. Idaho State - 11.19.23
49 - vs. South Florida (N) - 11.24.23
55 - vs. UTSA - 11.6.23

Most points (Quarter)

27 - @Grambling State (2nd) - 11.16.23
26 - vs. San Francisco (4th) - 11.13.23
25 - vs. Montana State (3rd) - 11.10.23

Fewest points (Quarter)

5 - vs. Idaho St. (1st) - 11.19.23
8 - vs. Montana St. (2nd) - 11.10.23
10 - (3x) last vs. Idaho St. (2nd) - 11.19.23

Most points (1st half)

45 - @Grambling State - 11.16.23
40 - vs. Texas (N) - 11.23.23
35 - vs. High Point (N) - 11.25.23

Fewest points (1st half)

15 - vs. Idaho State - 11.19.23
21 - vs. South Florida (N) - 11.24.23
23 - vs. UTSA - 11.6.23

Most points (2nd half)

44 - vs. Texas (N) - 11.23.23
42 - vs. San Francisco - 11.13.23
35 - vs. Montana State 11.10.23

Fewest points (2nd half)

25 - (2x) last vs. Idaho State - 11.19.23
28 - vs. South Florida (N) - 11.24.23
32 - vs. UTSA - 11.6.23

SCORING HIGHS / LOWS BY ASU IN 2022-23

Most points (Game)

83 - @New Mexico - 11.20.22
82 - vs. Prairie View - 12.17.22
80 - @Grand Canyon - 11.30.22

Fewest points (Game)

48 - @Oregon - 2.25.23
49 - @USC - 2.3.23
53 - vs. Washington - 1.29.23

Most points (Quarter)

35 - @Grand Canyon (4th) - 11.30.22
30 - @Oregon St. (4th) - 2.23.23
26 - vs. Stanford (4th) - 2.12.23

Fewest points (Quarter)

3 - vs. Cal (3rd) - 2.10.23
6 - vs. Utah (2nd) - 2.19.23
7 - vs. Oregon St. (1st) - 1.8.23

Most points (1st half)

46 - @Montana State - 11.15.22
40 - (2x) last vs. PVAM - 12.17.22
36 - @New Mexico - 11.20.22

Fewest points (1st half)

19 - (2x) last vs. Washington St. - 1.27.23
22 - (2x) last vs. Oregon - 2.25.23
23 - vs. Stanford 2.12.23

Most points (2nd half)

49 - @Oregon St. - 2.23.22
48 - @Grand Canyon - 11.30.22
42 - vs. PVAM - 12.17.22

Fewest points (2nd half)

25 - vs. Washington - 1.29.23
26 - (2x) last @Oregon - 2.25.23
27 - (3x) last @USC - 2.3.23

SCORING HIGHS / LOWS BY OPPONENT IN 2022-23

Most points (Game)

101 - @Stanford - 12.31.22
96 - vs. Stanford - 2.12.23
88 - vs. Massachusetts - 12.2.22

Fewest points (Game)

49 - vs. Grambling - 11.11.22
55 - vs. Washington - 1.29.23
61 - (2x) last vs. Washington St. - 1.27.23

Most points (Quarter)

30 - (2x) last @Arizona (3rd) - 12.29.22
29 - vs. Stanford (1st) - 2.12.23
26 - (3x) last vs. Stanford (4th) - 2.12.23

Fewest points (Quarter)

6 - vs. UCLA (4th) - 3.1.23
7 - vs. Montana St. (1st) - 11.15.22
10 - (2x) last vs. Washington (2nd) - 1.29.23

Most points (1st half)

54 - (2x) last vs. Stanford - 2.12.23
51 - @Stanford - 12.31.22
43 - vs. Arizona - 1.23.23

Fewest points (1st half)

22 - vs. Grambling - 11.11.22
24 - vs. Washington - 1.29.23
27 - vs. Montana St. - 11.15.22

Most points (2nd half)

54 - vs. Notre Dame - 11.26.22
50 - @Stanford - 12.31.22
47 - @UCLA - 2.5.23

Fewest points (2nd half)

23 - vs. UCLA - 3.1.23
27 - vs. Grambling - 11.11.22
28 - (2x) last vs. Colorado - 2.17.23

SUN DEVIL

W O M E N ' S B A S K E T B A L L

2023-24 SUN DEVIL WBB GAME NOTES

ALL-PAC-12 STANDOUT TYI SKINNER TO MISS 2023-24 SEASON

Although the Sun Devil women's basketball team's overall health is a 180-degree difference from last season, the squad was dealt a tremendous blow when Natasha Adair announced Oct. 4, 2023 that senior guard Tyi Skinner will miss the 2023-24 season due to a knee injury.

Skinner, who last season earned All-Pac-12 honorable mention honors from the league's coaches and All-Pac-12 recognition from media who cover the league, quickly established herself as one of top scorers in the Pac-12 and one of the most exciting players in the nation to watch in her first season in Tempe.

In 2022-23, Skinner scored 20 or more points 15 times, including a career-high 29 points on two occasions. A starter in all 28 games, Skinner went on to average 19.3 points per game, the most by a Sun Devil since the 1988-89 season. She concluded her first campaign in the Maroon and Gold among the leaders in the Pac-12 in points per game (19.3/2nd/27th in the nation), 3-pointers per game (2.43 per game/2nd), minutes per game (36.59/3rd/29th in the nation), free throws made (79/3rd) and attempted (91/4th), steals per game (1.71/5th), 3-point FG percentage (34.7/6th) and free throw percentage (78.1/8th).

PLAYER NOTES

#1 • Kadidia Toure • F • 6-3 • So. • Silver Spring, Md.

- Transferred to ASU in 2023 after playing at James Madison as a freshman.
- Has played in every game (six starts) and leads ASU in FG pct. (50.8) and rebounds (6.0 rpg).
- Posted first career double-double with career highs in points (22)/rebounds (14) to go with 3 steals vs. San Francisco (Nov. 13).
- Four-year varsity player for Our Lady of Good Counsel (Olney, Md.). As a senior in 2022, the league's player of the year averaged 14 points, 13 rebounds and four blocks on her way to WCAC Player of the Year honors and first-team All-Met recognition.

#2 • Jaddan Simmons • G • 5-9 • Sr. • Houston, Texas

- Has started all 85 games she's played in her career.
- First 4 games of season: Averaged 16.0 ppg, 4.0 rpg, 3.8 apg, 3.0 spg and shot 56 pct 3FG (5-9) and 90 pct (27-30) from the line.
- Needs 65 points to reach 1000 for her career.
- Has had 0 (4x) or 1 (1x) turnover 5x in 8 games (3.6 apg in those games).
- Was named 2022 Preseason Pac-12 HM and at the conclusion of the season was named Pac-12 All-Defensive Team HM in 2023.

#3 • Tyi Skinner • G • 5-5 • Sr. • Washington, D.C.

- Was announced on October 4, 2023 that Tyi Skinner will miss the 2023-24 season due to a knee injury.
- Made an immediate impact in her first season as a Sun Devil, earning All Pac-12 recognition from media that cover the league and Pac-12 HM honors from the league's coaches for a season in which she started all 28 games and averaged the most points per game (19.2) in a season since 1988-89.
- Scored in double figures in 25/28 games, including 15 games w/20 or more points, and finished 2nd in the Pac-12 and 27th in the nation in ppg season.

#4 • Trayanna Crisp • G • 5-8 • So. • Goodyear, Ariz.

- In her first season wearing the Maroon and Gold, Crisp appeared in all 28 games (5 starts).
- Has played in every game (6 starts) this season and has scored in double figures in all but one game.
- Leads ASU in scoring (12.1 ppg), 3FGs per game (1.5) and FT pct. (85.0/17-20) and is 2nd in assists (2.9 apg) and steals per game (1.9).
- Has averaged 14.3 ppg in last 4 games (includes pair of career-high 17-point efforts vs. Idaho State and vs. South Florida). Also had career-high 6 assists (0 TOs) vs. Idaho State.

#10 • Marina Radocaj • G/F • 6-2 • Fr. • Richmond, British Columbia

- Earned spots on Canada's U16 and U17 teams.
- Member of the 2021 U16 Canadian Team that placed second at FIBA Americas. Radocaj averaged 9.2 points and 5.0 rebounds per game in the six games she played (all starts).
- Played in 5 games at 2022 FIBA U17 Women's Basketball World Cup.
- Has played in 4 games.
- Hit one of ASU's nine 3-pointers in its season-opening win over UTSA (Nov. 6).

#11 • Maggie Besselink • G/F • 6-3 • Sr. • Kingston, Ontario

- After missing the 2022-23 season due to injury, made her return to the floor in 2023-24.
- Is 2nd on the team in rebounds per game (5.3) and had led team in rebounds in 4 games this season.
- Besselink, who had not played in a game since Feb. 6, 2022, was not only in the starting lineup in the season opener, but also played a major role in igniting ASU's offense after hitting back-to-back triples in the first quarter vs. UTSA (Nov. 6).
- Scored 11 points and grabbed a game-high 10 rebounds to post her second career double-double at Grambling State (Nov. 16).
- Added 10 points and career-high 3 steals vs. Idaho State (Nov. 19).

#12 • Treasure Hunt • G • 6-2 • Sr. • Chattanooga, Tenn.

- In her first season as a Sun Devil, played & started in 27 games and averaged 34.1 minutes (3rd on team), 11.3 points and 6.1 rebounds. Also made 28 3-pointers and had 22 blocks and 25 steals. Had career-high 24 points vs. Arizona on Jan. 22, 2023, and had career-best 15 rebounds at New Mexico on Nov. 20, 2022.
- Including 2 seasons at Kentucky, has started 59 of 80 career games.
- Has played in every game this season (2 starts) and is currently averaging 9.0 ppg & 3.5 rpg.
- Was named to Reef Division All-Tournament Team of the Paradise Jam (Nov. 23-25) after averaging 14.7 ppg while shooting 56 percent (19-34 FGs), including 50 percent (5-10) from long distance, in ASU's 3 contests... Posted season highs in points (19) and rebounds (8) in win over High Point.

#13 • Sandra Magolico • F • 6-2 • Jr. • Maputo, Mozambique

- Transferred to ASU after playing two seasons at New Mexico CC.
- Has played in every game this season and recently played her way into the starting lineup starting ASU's last two games at Paradise Jam: vs. South Florida on Nov. 24 (scored 8 points, led ASU with 7 boards and tied for team lead with 3 steals) and vs. High Point on Nov. 25 (4 points and 5 rebounds).
- In 2019, competed for the Mozambique national team, playing in nine games and averaged 11.0 minutes per game.
- Started 28 of 30 games in 2022-23, leading New Mexico JC to a 26-6 record and a Round of 16 finish in the NJCAA WBB Championship.

SUN DEVIL

W O M E N ' S B A S K E T B A L L

2023-24 SUN DEVIL WBB GAME NOTES

#20 • Kiley Sours-Miller • C • 6-3 • Fr. • Surprise, Ariz.

- Playing for Dream City Christian, as a senior was ranked No. 10 in The Arizona Republic's Elite Girls 50 players in 2022-23.
- Scored more than 1,000 points in her career and led Dream Christian to the 2023 Girls Open Division state title.
- Averaged a double-double after playing first two seasons at Peoria Centennial, junior season at Phoenix Greenway and senior season at Glendale Dream City Christian.

#21 • Hanna Miller • F • 6-2 • So. • Aberdeen, S.D.

- The sister of incoming freshman Sun Devil Mallory Miller, transferred to ASU from Dodge City CC (Dodge City, Kan.) where she played in 23 games (3 starts) and averaged 11.3 minutes per game.
- As a senior in HS, teamed with Mallory to lead Aberdeen Christian to a 21-5 record and a berth in the Class B girls basketball tournament.
- Has played in 3 games and accounted for first points of career (4/1-1 3FG/1-2 FTs) in win vs. Idaho State (Nov. 19).

#22 • Journey Thompson • F • 6-3 • So. • McMurray, Pa.

- Played in 13 games (three starts) as a freshman before having season prematurely come to an end due to injury.
- Has played in every game this season (4 starts) and is 2nd on the team in FG pct. (48.3) & blocks (0.6 bpg) and 3rd in rebounds (5.0 rpg).
- Scored 13 points and grabbed 12 rebounds for ASU's first double-double of the season in win vs. Montana State (Nov. 10).
- Scored 12 points in her first start of the season vs. San Francisco (Nov. 13) and had another 12-point outing vs. Idaho State (Nov. 19).
- Produced high-quality game in Paradise Jam finale vs. High Point on Nov. 25: 11 points (5-6 FGs) and 8 rebounds.

#23 • Jalyn Brown • G • 6-1 • So. • Baltimore, Md.

- Transferred to ASU in 2023 after playing freshman season at Louisville. Played in seven contests for Louisville squad that went on to conclude its season in the Elite Eight of the 2023 NCAA Tournament.
- Had tremendous Sun Devil debut: Scored 16 points and grabbed 4 rebounds in ASU's season-opening win vs. UTSA (Nov. 6). Followed that with an 11-point outing vs. Montana State (Nov. 10).
- Missed games vs. San Francisco (Nov. 13) & at Grambling State (Nov. 16) before returning in reserve role vs. Idaho State (Nov. 19).
- Was named to Reef Division All-Tournament Team of the Paradise Jam (Nov. 23-25) after averaging a team-high 17.0 ppg while hitting 54 percent of her shots (13-24) in ASU's two wins. Against South Florida (Nov. 24), scored 10 of 14 points & hit both of her 3-pointers during a game-changing 3rd quarter in which ASU outscored the Bulls 24-6... Added a game-high 20 points in ASU's win over High Point (Nov. 25).

#24 • Mallory Miller • F • 6-4 • Fr. • Aberdeen, S.D.

- The sister of ASU guard Hanna Miller, Mallory was named a KELO-LAND Media Group All-Star Girls Basketball Player of the Year finalist and nominated Miss Basketball 2023 for the state of South Dakota after averaging 18.5 points, 9.5 rebounds and 2.7 assists.
- Led Wolsey-Wessington to a 22-3 record an appearance in the state semifinals (its first appearance in the state tournament) and the state's top seed in 2023.
- As a junior, teamed with sister Hanna to help Aberdeen Christian to a 21-5 record & a berth in the Class B girls basketball tournament.
- Has played in 6 contests and is averaging 10.6 minutes per game.
- Tied for team lead in rebs (7) & had 4 points vs. Idaho State (Nov. 19).

#25 • Adison Novosel • G • 5-11 • Jr. • Richfield, Ohio

- Has played in four games for ASU this season.
- Transferred to ASU in 2023 after playing first two seasons at Saint Francis University where she appeared in 35 contests (25 starts).
- After appearing in seven games off the bench as a freshman, started 25 of 28 games in 2022-23.
- As a sophomore, led Saint Francis with 29 triples and posted career highs in points (12) and 3-pointers (4) vs. Central Connecticut State (Jan. 28). Also pulled down a career-high six rebounds twice and snared a career-high three steals vs. Coppin State (Nov. 7).

#30 • Morasha Wiggins • G • 6-0 • Jr. • Kalamazoo, Mich.

- Transferred to ASU after playing her freshman season (2021-22) at North Carolina.
- Ranked 18th in the ESPNW Class of 2021 rankings, Wiggins was expected to be an impact player for the Sun Devils before suffering a preseason injury that forced her to miss the entire 2022-23 campaign.
- Played 23 minutes and scored 8 points and hit all 4 FTs in her Sun Devil debut vs. San Francisco (Nov. 13).
- Is averaging 12.6 minutes per game and is shooting 50 percent from the floor (6-12 FGs).

#44 • Isadora Sousa • G • 6-0 • Grad. • Sao Paulo, Brazil

- Has yet to play in 2023-24 due to injury.
- Has played in 30 games with seven starts in her two seasons with the Sun Devils.
- Has worked hard to come back from injury each of last two seasons and has proved to be an effective performer when on the floor.
- In 2022-23, scored a career high-tying points in consecutive games (at Stanford/Dec. 31 and at Cal/Jan 2) and had the second highest field goal percentage on the team, shooting 44.8%.

RECAPPING THE 2022-23 SEASON

Despite a spate of unlucky injuries to key personnel, the Sun Devils had several noteworthy accomplishments during Adair's inaugural season in Tempe. The accomplishments included...

- Starting 5-0 for the first time since 2002-03.
- Finishing the season No. 2 in the Pac-12 and 10th in the nation in fewest turnovers per game (12.3). Only ASU's 2017-18 squad averaged fewer turnovers per game (11.7) in a season.
- Even with all its injuries, ASU nearly pulled off three Top 25 upsets in the season's final five games: vs. No. 21 Colorado (62-70), vs. No. 4 Utah (69-74) and vs. No. 19 UCLA (70-81-OT) in the first round of the Pac-12 Tournament. After trailing the Bruins by as many as 19 points in the third quarter, the Sun Devils staged a furious rally to take a two-point lead in regulation before falling in overtime. The win would have been ASU's biggest comeback in school history.
- In their 75-73 win at Oregon State, the Sun Devils overcame their second-largest deficit in school history (17 points). The victory was also No. 175 of Adair's career.
- Individually, Sun Devil guards Jaddan Simmons (Pac-12 All-Defense honorable mention) and Tyi Skinner (All-Pac-12 honorable mention) comprised one of the most talented backcourts in the country. Both players earned Pac-12 honors as voted on by the league's head coaches. Skinner, who finished second in the Pac-12 and 27th in the nation in scoring (19.2 ppg), was also named to the media's 15-member All-Pac-12 team.

HEAD COACH NATASHA ADAIR



- On March 27, 2022, Natasha Adair was introduced as the new head coach of Sun Devil Women's Basketball.
- Adair, who brought 10 seasons of head coaching experience to ASU, came to Tempe after five seasons at Delaware where she compiled a 95-58 record, including a 48-13 record in her final two seasons.
- In 2021-22, Adair's final season at Delaware, the Blue Hens captured the program's third Colonial Athletic Association tournament title and earned their first trip to the NCAA Tournament in nearly a decade.
- In 2021, Adair was named the CAA's Coach of the Year for a season in which she guided Delaware to its first regular season conference championship since 2013.
- Prior to her five seasons at Delaware, Adair also had successful head coaching stints at College of Charleston (two seasons) and Georgetown (three seasons).
- Despite a spate of unlucky injuries to key personnel, the Sun Devils had several noteworthy accomplishments during Adair's inaugural season in Tempe, including: Starting 5-0 for the first time since 2002-03; Finishing the season No. 2 in the Pac-12 and 10th in the nation in fewest turnovers per game (12.3/only ASU's 2017-18 squad averaged fewer turnovers per game (11.7) in a season; Even with all its injuries, ASU nearly pulled off three Top 25 upsets in the season's final five games: vs. No. 21 Colorado (62-70), vs. No. 4 Utah (69-74) and vs. No. 19 UCLA (70-81-OT) in the first round of the Pac-12 Tournament; After trailing the Bruins by as many as 19 points in the third quarter, the Sun Devils staged a furious rally to take a two-point lead in

regulation before falling in overtime. The win would have been ASU's biggest comeback in school history; In their 75-73 win at Oregon State, the Sun Devils overcame their second-largest deficit in school history (17 points). The victory was also No. 175 of Adair's career; Individually, Sun Devil guards Jaddan Simmons (Pac-12 All-Defense honorable mention) and Tyi Skinner (All-Pac-12 honorable mention) comprised one of the most talented backcourts in the country; Both players earned Pac-12 honors as voted on by the league's head coaches. Skinner, who finished second in the Pac-12 and 27th in the nation in scoring (19.2 ppg), was also named to the media's 15-member All-Pac-12 team.

- In addition to the 2021-22 team (NCAA Tournament), Adair's leadership while at Delaware was instrumental in the 2017-18 (WNIT) and 2020-21 (WNIT) squads earning postseason appearances. Playing a big role in Delaware's success in Adair's final two seasons as head coach was the Blue Hens' resiliency on the offensive glass as they finished among the top three teams in the nation in offensive rebounding in 2020-21 and 2021-22.

- Under Adair's tutelage, three Delaware student-athletes earned Player of the Year honors, two were named Rookie of the Year and multiple players collected All-Conference honors.

- In recent years, Adair has taken on an increasingly prominent role within USA Basketball. In 2017, she was appointed as the U19 Women's World Cup Team Trials Court Coach. In 2018, Adair was a speaker at USA Basketball's Las Vegas Coach Academy. In 2018 and 2019, Adair earned gold medals while serving as an assistant coach for the USA teams that won the 2018 FIBA Americas U18 Championship and the 2019 FIBA U19 World Cup.

- Adair joined the Blue Hens from Georgetown University, where she turned a four-win Hoyas program into a postseason contender in three seasons as head coach. Behind Adair's leadership, Georgetown finished the 2016-17 campaign with 17 wins, the most wins for the Hoyas since 2011-12 and garnered the team's second straight trip to the Postseason WNIT.

- In only her second season at Georgetown, Adair helped the Hoyas experience a 180-degree turnaround as they finished 16-14 – the third-best NCAA DI turnaround in 2015-16 – and made the program's first postseason appearance since 2012.

- While at Georgetown, Adair coached a Big EAST Rookie of the Year, two players who were named to the league's All-Rookie team and pair of All-Conference standouts.

- Adair's first head coaching job was at College of Charleston, where (35-31 overall in two seasons). She was the first coach to lead the program to consecutive postseason appearances.



SUN DEVIL

W O M E N ' S B A S K E T B A L L

HEAD COACH NATASHA ADAIR

- In 2013-14, Adair's second season and the Cougars' first in the Colonial Athletic Association, Adair guided College of Charleston to a record of 19-15, marking the third-highest win total in the school's Division I era. Additionally, the squad finished third in conference play, defeated five postseason teams from the previous year and advanced to the semifinals of both the CAA Championship and the Women's Basketball invitational.

- In her first season at College of Charleston, Adair led the Cougars to 16 wins and a WBI postseason bid. Her first squad broke 22 school records along the way.

- While leading the College of Charleston, Adair coached two all-conference players and an all-rookie team performer who would go on to be named a three-time CAA Defensive Player of the Year.

- Adair previously spent 14 seasons in the assistant coaching ranks, with eight years (2004-12) at Wake Forest University and six seasons (1998-04) at Georgetown University. Her coaching career has seen her develop and mentor five WNBA draft picks and several players who went on to play professionally overseas.

- A founding member of the Black Coaches United, Adair has been recognized by the organization, as well as Advancement of Blacks in Sports (ABIS), as one of the top women's basketball coaches in the country. Adair prides herself on being known as a game-changer as it

relates to social justice and creating a safe space for athletes to find and use their voice; where she was a guest on ESPNW's "Around the Rim" with LaChina Robinson and Delaware's UD Winning Women in Athletics: Trailblazers and Changemakers Webinar Series.

- Adair played collegiately at Pensacola Junior College (1990- 92) before playing and graduating from the University of South Florida with a degree in communications in 1994.

- Coach Adair has two children, a son Aaron M. Adair (26), graduated magna cum laude from Johnson C. Smith University. A four-year member of the university's President's Council for his academic achievement, he also earned four letters playing for the men's basketball team. Daughter Allyssa M. Adair (18) is a freshman at Texas State University and a middle blocker on the volleyball team.



NATASHA ADAIR'S CAREER COACHING RECORD

Year	School	Overall Record	Conf. Record	Notes
2023-24	Arizona State	6-2	0-0	
2022-23	Arizona State	8-20	1-17	Led ASU to first 5-0 start since 2002-03
ASU (2 seasons)		14-22	1-17	
2021-22	Delaware	24-8	15-3	Earned program's third CAA title and its first NCAA Tournament berth since 2013
2020-21	Delaware	24-5	16-2	Named CAA Coach of the Year, guided squad to regular-season CAA title & WNIT semifinals
2019-20	Delaware	12-17	8-10	Season ended early by Covid-19
2018-19	Delaware	16-15	11-7	Reached 11 CAA wins in back-to-back seasons for the first time since 2013
2017-18	Delaware	19-13	11-7	Guided team to second-most wins (19) and first postseason appearance since 2013-14
Delaware Totals (5 seasons)		95-58	61-29	
2016-17	Georgetown	17-13	9-9	Most wins since 2012 and second straight trip to the Postseason WNIT
2015-16	Georgetown	16-14	9-9	Program's first postseason appearance since 2011-12; third best turnaround in the nation
2014-15	Georgetown	4-27	2-16	Previously served as an assistant coach for six seasons (1998-2004)
Georgetown (3 seasons)		37-54	20-34	
2013-14	College of Charleston	19-15	9-7	Third-highest win total in the school's Division I era & first season in the CAA
2012-13	College of Charleston	16-16	11-9	Third most wins in prior 23 years along with postseason WNIT invite
College of Charleston (2 seasons)		35-31	20-16	
Career Totals (12 seasons)		181-165	102-96	

2023-24 SUN DEVIL WBB ROSTER

No.	Name	Pos.	Ht.	Yr.	Hometown / High School / Last School
^0	Jaylah Robinson	G	5-11	So.	Philadelphia, Pa. / Mastery Charter School
1	Kadidia Toure	F	6-3	So.	Silver Spring, Md. / Our Lady of Good Counsel / James Madison
2	Jaddan Simmons	G	5-9	Sr.	Houston, Texas / Southwest (Wisc.)
^3	Tyi Skinner	G	5-5	Sr.	Washington, D.C. / TPLS Christian Academy / Delaware
4	Trayanna Crisp	G	5-8	So.	Goodyear, Ariz. / Millennium
10	Marina Radocaj	G/F	6-2	Fr.	Richmond, British Columbia / R.A. McMath Secondary School
11	Maggie Besselink	G/F	6-3	Sr.	Kingston, Ontario / Holy Cross Secondary School
12	Treasure Hunt	G	6-2	Sr.	Chattanooga, Tenn. / Hamilton Heights Christian Academy / Kentucky
13	Sandra Magolico	F	6-2	Jr.	Maputo, Mozambique / Escola Secundaria da Polana / New Mexico JC
20	Kiley Sours-Miller	C	6-4	Fr.	Surprise, Ariz. / Dream City Christian
21	Hanna Miller	F	6-2	So.	Aberdeen, S.D. / Aberdeen Christian / Dodge City CC
22	Journey Thompson	F	6-3	So.	McMurray, Pa. / Peters Township
23	Jalyn Brown	G	6-1	So.	Baltimore, Md. / St. Frances Academy / Louisville
24	Mallory Miller	F	6-4	Fr.	Aberdeen, S.D. / Wolsey-Wessington
25	Adison Novosel	G	5-11	Jr.	Richfield, Ohio / Revere / Saint Francis University
30	Morasha Wiggins	G	6-0	Jr.	Kalamazoo, Mich. / Kalamazoo / North Carolina
44	Isadora Sousa	G	6-0	Grad.	Sao Paulo, Brazil / Colegio A-Escopo / Chipola College

^ - Will not play in 2023-24 for medical reasons

Head Coach: Natasha Adair (2nd season)

Associate Head Coach: Darrell Mosley (2nd season)

Assistant Coach/Recruiting Coordinator: Mykala Walker (2nd season)

Assistant Coach: Camille Collier (2nd season)

Special Assistant to the Head Coach: Yvonne Sanchez (1st season)

Director of Operations: Carter Caplan (2nd season)

Assistant Director of Operations: Lizzie Oleary (2nd season)

Pronunciation Guide

Natasha Adair – A-dare

Maggie Besselink – Bessel-ink

Jalyn Brown – Jay-lynn

Trayanna Crisp – Tray-on-nah

Sandra Magolico – Sahn-dra Mag-oh-leek-oh

Adison Novosel – No-vuh-sell

Marina Radocaj – Maude-E-nuh Rahd-oh-chai

Jaylah Robinson – Jay-luh

Jaddan Simmons – Jade-en

Tyi Skinner – Tie

Isadora Sousa – So-za

Kadidia Toure – kuh-DEE-shuh TORE-ay

Morasha Wiggins – more-AH-shuh

SUN DEVIL

W O M E N ' S B A S K E T B A L L

2023-24 RADIO/TV ROSTER



0 JAYLAH ROBINSON

Sophomore | Guard | 5-11
Philadelphia, Pa.
Mastery Charter School



1 KADIDIA TOURE

Sophomore | Forward | 6-3
Silver Spring, Md | Our Lady of Good
Counsel | James Madison



2 JADDAN SIMMONS

Senior | Guard | 5-9
Houston, Texas | Southwest (Wisc.)



3 TYI SKINNER

Senior | Guard | 5-5
Washington, D.C. | TPLS Christian
Academy | Delaware



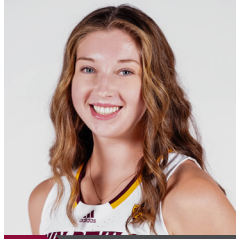
4 TRAYANNA CRISP

Sophomore | Guard | 5-8
Goodyear, Ariz. | Millennium



10 MARINA RADOCAJ

Freshman | Guard/Forward | 6-2
Richmond, British Columbia
R.A. McMath Secondary School



11 MAGGIE BESSELINK

Senior | Guard/Forward | 6-3
Kingston, Ontario | Holy Cross
Secondary School



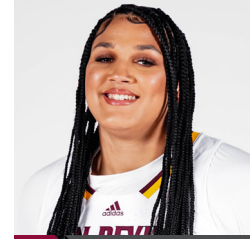
12 TREASURE HUNT

Senior | Guard | 6-2
Chattanooga, Tenn. | Hamilton Heights
Christian Academy | Kentucky



13 SANDRA MAGOLICO

Junior | Forward | 6-2
Maputo, Mozambique / Escola Secundaria
da Polana / New Mexico JC



20 KILEY SOURS-MILLER

Freshman | Center | 6-4
Surprise, Ariz.
Dream City Christian



21 HANNA MILLER

Sophomore | Forward | 6-2
Aberdeen, S.D. | Aberdeen
Christian / Dodge City CC



22 JOURNEY THOMPSON

Sophomore | Forward | 6-3
McMurray, Pa. | Peters Township



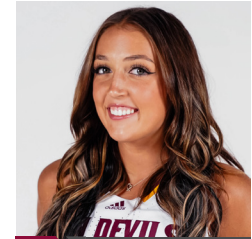
23 JALYNN BROWN

Sophomore | Guard | 6-1
Baltimore, Md. | St. Frances
Academy | Louisville



24 MALLORY MILLER

Freshman | Forward | 6-4
Aberdeen, S.D.
Wolsey-Wessington



25 ADISON NOVOSEL

Junior | Guard | 5-11
Richfield, Ohio | Revere
Saint Francis University



30 MORASHA WIGGINS

Sophomore | Junior | 6-0
Kalamazoo, Mich. | Kalamazoo
North Carolina



44 ISADORA SOUSA

Grad | Guard | 6-0
Sao Paulo, Brazil | Colegio A-Escopo
Chipola College



NATASHA ADAIR

Head Coach
Second Season



DARRELL MOSLEY

Associate Head Coach
Second Season



MYKALA WALKER

Asst. Coach/Recruiting Coordinator
Second Season



CAMILLE COLLIER

Assistant Coach
Second Season



YVONNE SANCHEZ

Special Assistant to the Head Coach
First Season



CARTER CAPLAN

Director of Operations
Second Season



LIZZIE O'LEARY

Assistant Director of Operations
Second Season

SUN DEVIL

W O M E N ' S B A S K E T B A L L



2023-24 Arizona St. Women's Basketball Combined Team Statistics All games

Page 1/1
as of Nov 26, 2023

Game Records

Record	Overall	Home	Away	Neutral
ALL GAMES	6-2	4-0	0-1	2-1
CONFERENCE	0-0	0-0	0-0	0-0
NON-CONFERENCE	6-2	4-0	0-1	2-1

Score by Periods

Team	1st	2nd	3rd	4th	OT	TOT
Arizona St.	155	131	121	139	0	546
Opponents	102	131	128	137	0	498

Team Box Score

No.	Player				Total		3-Point		F-Throw		Rebounds														
		GP-GS	MIN	AVG	FG-FGA	FG%	3FG-3FGA	3FG%	FT-FTA	FT%	OFF	DEF	TOT	AVG	PF	DQ	A	TO	BLK	STL	PTS	AVG			
4	CRISP, Trayanna	8-6	255:17	31.9	34-82	.415	12-35	.343	17-20	.850	2	16	18	2.3	19	0	23	18	0	11	97	12.1			
23	BROWN, Jalyn	6-4	158:43	26.5	25-60	.417	7-19	.368	12-17	.706	4	15	19	3.2	17	0	4	22	1	3	69	11.5			
2	SIMMONS, Jaddan	8-8	267:01	33.4	22-62	.355	5-14	.357	41-50	.820	7	25	32	4.0	23	0	26	15	3	17	90	11.3			
1	TOURE, Kadidia	8-6	180:28	22.6	32-63	.508	0-4	.000	12-23	.522	17	31	48	6.0	23	0	6	10	1	9	76	9.5			
12	HUNT, Treasure	8-2	179:03	22.4	29-61	.475	8-22	.364	6-9	.667	5	23	28	3.5	19	0	9	15	2	6	72	9.0			
22	THOMPSON, Journey	8-4	146:46	18.3	20-41	.488	0-1	.000	16-25	.640	18	22	40	5.0	21	0	1	12	5	3	56	7.0			
11	BESSELINK, Maggie	8-8	160:11	20.0	14-37	.378	4-11	.364	7-11	.636	11	31	42	5.3	29	2	7	11	6	6	39	4.9			
30	WIGGINS, Morasha	6-0	75:51	12.6	6-12	.500	0-2	.000	6-9	.667	2	6	8	1.3	5	0	1	4	1	3	18	3.0			
13	MAGOLICO, Sandra	8-2	89:45	11.2	6-17	.353	0-1	.000	3-13	.231	9	10	19	2.4	5	0	3	3	0	5	15	1.9			
21	MILLER, Hanna	3-0	03:29	1.2	1-1	1.000	1-1	1.000	1-2	.500	0	0	0	0.0	0	0	0	0	0	0	4	1.3			
24	MILLER, Mallory	6-0	63:28	10.6	3-18	.167	0-7	.000	1-2	.500	5	9	14	2.3	4	0	2	5	2	0	7	1.2			
10	RADOCAJ, Marina	4-0	13:25	3.4	1-3	.333	1-2	.500	0-0	.000	1	3	4	1.0	3	0	0	1	0	1	3	0.8			
25	NOVOSEL, Adison	4-0	06:35	1.6	0-1	.000	0-0	.000	0-0	.000	0	0	0	0.0	2	0	0	0	0	0	0	0.0			
Team											15	16	31					6							
Total		8	1600		193-458	.421	38-119	.319	122-181	.674	96	207	303	37.9	170	2	82	122	21	64	546	68.3			
Opponents		8	1600		170-475	.358	46-151	.305	112-156	.718	112	191	303	37.9	146	3	102	135	23	41	498	62.3			

Team Statistics

	ASU	OPP
Scoring	546	498
Points per game	68.3	62.3
Scoring margin	+6.0	-
Field goals-att	193-458	170-475
Field goal pct	.421	.358
3 point fg-att	38-119	46-151
3-point FG pct	.319	.305
3-pt FG made per game	4.8	5.8
Free throws-att	122-181	112-156
Free throw pct	.674	.718
F-Throws made per game	15.3	14.0
Rebounds	303	303
Rebounds per game	37.9	37.9
Rebounding margin	0.0	-
Assists	82	102
Assists per game	10.3	12.8
Turnovers	122	135
Turnovers per game	15.3	16.9
Turnover margin	+1.6	-
Assist/turnover ratio	0.7	0.8
Steals	64	41
Steals per game	8.0	5.1
Blocks	21	23
Blocks per game	2.6	2.9
Winning streak	2	-
Home win streak	4	-
Attendance	5515	521
Home games-Avg/Game	4-1379	1-521
Neutral site-Avg/Game	-	3-1016

Team Results

Date	Opponent		Score	Att.
11/06/2023	UTSA	W	70-55	821
11/10/2023	Montana St.	W	75-62	1521
11/13/2023	San Francisco	W	77-69	1397
11/16/2023	at Grambling	L	67-70	521
11/19/2023	Idaho St.	W	72-40	1776
11/23/2023	vs Texas	L	42-84	1224
11/24/2023	vs South Fla.	W	66-49	1824
11/25/2023	vs High Point	W	77-69	0



Arizona St. Women's Basketball
Individual Career Summaries
All games

Page 1/9
as of Nov 28, 2023

BESSELINK, Maggie

				Field Goals		3-Point		F-Throws		Rebounds										Scoring	
SEASON	TEAM	GP-GS	MIN/AVG	FG-FGA	FG%	3FG-3FGA	3FG%	FT-FTA	FT%	OFF	DEF	TOT	AVG	PF-FO	A	TO	BLK	STL		PTS	AVG
2020-21	ASU	18-14	389/21.6	31-83	.373	5-13	.385	24-33	.727	41	61	102	5.7	47-2	13	38	8	12		91	5.1
2021-22	ASU	12-7	197/16.4	19-49	.388	0-7	.000	8-17	.471	27	37	64	5.3	28-1	8	12	5	5		46	3.8
2023-24	ASU	8-8	160/20.0	14-37	.378	4-11	.364	7-11	.636	11	31	42	5.3	29-2	7	11	6	6		39	4.9
TOTAL		38-29	746/19.6	64-169	.379	9-31	.290	39-61	.639	79	129	208	5.5	104-5	28	61	19	23		176	4.6

Single Game Highs

Statistic	Value	
Points	13	vs Southern California 03/03/21
Rebounds	15	vs Minnesota 11/12/21
Assists	3	vs Washington 02/12/21
Steals	3	vs Idaho St. 11/19/23
Blocks	3	vs Marist 11/21/21
FG Made	5	at Grambling 11/16/23
FG Attempts	10	at Grambling 11/16/23
3FG Made	3	vs UTSA 11/06/23
3FG Attempts	4	vs UTSA 11/06/23
FT Made	5	vs Idaho St. 11/19/23
FT Attempts	8	vs Baylor 11/26/21

BROWN, Jalyn

				Field Goals		3-Point		F-Throws		Rebounds										Scoring	
SEASON	TEAM	GP-GS	MIN/AVG	FG-FGA	FG%	3FG-3FGA	3FG%	FT-FTA	FT%	OFF	DEF	TOT	AVG	PF-FO	A	TO	BLK	STL		PTS	AVG
2022-23	LOU	7-0	32/4.6	3-9	.333	1-4	.250	1-2	.500	2	1	3	0.4	1-0	0	4	0	3		8	1.1
2023-24	ASU	6-4	159/26.5	25-60	.417	7-19	.368	12-17	.706	4	15	19	3.2	17-0	4	22	1	3		69	11.5
TOTAL FOR ASU		6-4	159/26.5	25-60	.417	7-19	.368	12-17	.706	4	15	19	3.2	17-0	4	22	1	3		69	11.5
TOTAL		13-4	191/14.7	28-69	.406	8-23	.348	13-19	.684	6	16	22	1.7	18-0	4	26	1	6		77	5.9

Single Game Highs

Statistic	Value	
Points	20	vs High Point 11/25/23
Rebounds	4	vs UTSA 11/06/23, vs Texas 11/23/23, vs High Point 11/25/23
Assists	1	4 times
Steals	2	vs SIUE 12/06/22, vs Idaho St. 11/19/23
Blocks	1	vs Texas 11/23/23
FG Made	7	vs High Point 11/25/23
FG Attempts	12	4 times
3FG Made	3	vs UTSA 11/06/23
3FG Attempts	7	vs UTSA 11/06/23
FT Made	4	vs High Point 11/25/23
FT Attempts	5	vs Montana St. 11/10/23



Arizona St. Women's Basketball
Individual Career Summaries
All games

Page 2/9
as of Nov 28, 2023

CRISP, Trayanna

SEASON	TEAM	GP-GS	MIN/AVG	Field Goals		3-Point		F-Throws		Rebounds									Scoring	
				FG-FGA	FG%	3FG-3FGA	3FG%	FT-FTA	FT%	OFF	DEF	TOT	AVG	PF-FO	A	TO	BLK	STL	PTS	AVG
2022-23	ASU	28-7	605/21.6	51-170	.300	14-59	.237	36-50	.720	16	49	65	2.3	58-1	37	38	1	16	152	5.4
2023-24	ASU	8-6	255/31.9	34-82	.415	12-35	.343	17-20	.850	2	16	18	2.3	19-0	23	18	0	11	97	12.1
TOTAL		36-13	860/23.9	85-252	.337	26-94	.277	53-70	.757	18	65	83	2.3	77-1	60	56	1	27	249	6.9

Single Game Highs

Statistic	Value	
Points	17	vs Idaho St. 11/19/23, vs South Fla. 11/24/23
Rebounds	5	vs Prairie View 12/17/22, at Oregon St. 02/23/23, vs UCLA 03/01/23
Assists	6	vs Idaho St. 11/19/23
Steals	3	vs San Francisco 11/13/23, at Grambling 11/16/23
Blocks	1	vs Northern Ariz. 11/07/22
FG Made	7	vs South Fla. 11/24/23
FG Attempts	14	vs Missouri 12/04/22
3FG Made	3	vs San Francisco 11/13/23
3FG Attempts	7	vs UTSA 11/06/23, vs San Francisco 11/13/23
FT Made	5	vs Prairie View 12/17/22, vs Idaho St. 11/19/23
FT Attempts	5	4 times

HUNT, Treasure

SEASON	TEAM	GP-GS	MIN/AVG	Field Goals		3-Point		F-Throws		Rebounds									Scoring	
				FG-FGA	FG%	3FG-3FGA	3FG%	FT-FTA	FT%	OFF	DEF	TOT	AVG	PF-FO	A	TO	BLK	STL	PTS	AVG
2020-21	UK	15-1	195/13.0	21-62	.339	10-32	.313	4-6	.667	10	22	32	2.1	16-0	10	13	5	4	56	3.7
2021-22	UK	30-29	715/23.8	74-209	.354	17-66	.258	42-79	.532	57	82	139	4.6	49-0	42	50	21	16	207	6.9
2022-23	ASU	27-27	919/34.1	103-344	.299	28-118	.237	71-103	.689	41	123	164	6.1	49-1	20	48	22	25	305	11.3
2023-24	ASU	8-2	179/22.4	29-61	.475	8-22	.364	6-9	.667	5	23	28	3.5	19-0	9	15	2	6	72	9.0
TOTAL FOR ASU		35-29	1099/31.4	132-405	.326	36-140	.257	77-112	.688	46	146	192	5.5	68-1	29	63	24	31	377	10.8
TOTAL		80-59	2008/25.1	227-676	.336	63-238	.265	123-197	.624	113	250	363	4.5	133-1	81	126	50	51	640	8.0

Single Game Highs

Statistic	Value	
Points	24	vs Arizona 01/22/23
Rebounds	15	at New Mexico 11/20/22
Assists	5	vs Presbyterian 11/09/21
Steals	3	vs Florida 01/20/22, vs California 02/10/23
Blocks	2	14 times
FG Made	8	vs High Point 11/25/23
FG Attempts	18	at Stanford 12/31/22
3FG Made	3	6 times
3FG Attempts	9	at Arizona 12/29/22
FT Made	9	vs Arizona 01/22/23
FT Attempts	10	vs DePaul 12/09/21, at Montana St. 11/15/22, vs Arizona 01/22/23



Arizona St. Women's Basketball
Individual Career Summaries
All games

Page 3/9
as of Nov 28, 2023

MAGOLICO, Sandra

				Field Goals		3-Point		F-Throws		Rebounds									Scoring	
SEASON	TEAM	GP-GS	MIN/AVG	FG-FGA	FG%	3FG-3FGA	3FG%	FT-FTA	FT%	OFF	DEF	TOT	AVG	PF-FO	A	TO	BLK	STL	PTS	AVG
2023-24	ASU	8-2	90/11.2	6-17	.353	0-1	.000	3-13	.231	9	10	19	2.4	5-0	3	3	0	5	15	1.9
TOTAL		8-2	90/11.2	6-17	.353	0-1	.000	3-13	.231	9	10	19	2.4	5-0	3	3	0	5	15	1.9

Single Game Highs

Statistic	Value	
Points	8	vs South Fla. 11/24/23
Rebounds	7	vs South Fla. 11/24/23
Assists	1	vs UTSA 11/06/23, vs San Francisco 11/13/23, vs High Point 11/25/23
Steals	3	vs South Fla. 11/24/23
FG Made	4	vs South Fla. 11/24/23
FG Attempts	7	vs South Fla. 11/24/23
3FG Attempts	1	vs South Fla. 11/24/23
FT Made	2	vs High Point 11/25/23
FT Attempts	5	vs South Fla. 11/24/23

MILLER, Hanna

				Field Goals		3-Point		F-Throws		Rebounds									Scoring	
SEASON	TEAM	GP-GS	MIN/AVG	FG-FGA	FG%	3FG-3FGA	3FG%	FT-FTA	FT%	OFF	DEF	TOT	AVG	PF-FO	A	TO	BLK	STL	PTS	AVG
2023-24	ASU	3-0	3/1.2	1-1	1.000	1-1	1.000	1-2	.500	0	0	0	0.0	0-0	0	0	0	0	4	1.3
TOTAL		3-0	3/1.2	1-1	1.000	1-1	1.000	1-2	.500	0	0	0	0.0	0-0	0	0	0	0	4	1.3

Single Game Highs

Statistic	Value	
Points	4	vs Idaho St. 11/19/23
FG Made	1	vs Idaho St. 11/19/23
FG Attempts	1	vs Idaho St. 11/19/23
3FG Made	1	vs Idaho St. 11/19/23
3FG Attempts	1	vs Idaho St. 11/19/23
FT Made	1	vs Idaho St. 11/19/23
FT Attempts	2	vs Idaho St. 11/19/23



Arizona St. Women's Basketball
Individual Career Summaries
All games

Page 4/9
as of Nov 28, 2023

MILLER, Mallory

				Field Goals		3-Point		F-Throws		Rebounds									Scoring	
SEASON	TEAM	GP-GS	MIN/AVG	FG-FGA	FG%	3FG-3FGA	3FG%	FT-FTA	FT%	OFF	DEF	TOT	AVG	PF-FO	A	TO	BLK	STL	PTS	AVG
2023-24	ASU	6-0	63/10.6	3-18	.167	0-7	.000	1-2	.500	5	9	14	2.3	4-0	2	5	2	0	7	1.2
TOTAL		6-0	63/10.6	3-18	.167	0-7	.000	1-2	.500	5	9	14	2.3	4-0	2	5	2	0	7	1.2

Single Game Highs

Statistic	Value	
Points	5	vs Idaho St. 11/19/23
Rebounds	7	vs Idaho St. 11/19/23
Assists	1	vs UTSA 11/06/23, vs Idaho St. 11/19/23
Blocks	2	vs Montana St. 11/10/23
FG Made	2	vs Idaho St. 11/19/23
FG Attempts	6	vs Idaho St. 11/19/23
3FG Attempts	2	vs UTSA 11/06/23, vs Montana St. 11/10/23
FT Made	1	vs Idaho St. 11/19/23
FT Attempts	2	vs Idaho St. 11/19/23

NOVOSEL, Adison

				Field Goals		3-Point		F-Throws		Rebounds									Scoring	
SEASON	TEAM	GP-GS	MIN/AVG	FG-FGA	FG%	3FG-3FGA	3FG%	FT-FTA	FT%	OFF	DEF	TOT	AVG	PF-FO	A	TO	BLK	STL	PTS	AVG
2021-22	SF-PA	7-0	12/1.7	3-4	.750	2-3	.667	0-0	.000	1	1	2	0.3	0-0	1	1	0	1	8	1.1
2022-23	SF-PA	28-25	575/20.5	35-132	.265	29-120	.242	3-6	.500	12	35	47	1.7	32-0	12	16	5	15	102	3.6
2023-24	ASU	4-0	7/1.6	0-1	.000	0-0	.000	0-0	.000	0	0	0	0.0	2-0	0	0	0	0	0	0.0
TOTAL FOR ASU		4-0	7/1.6	0-1	.000	0-0	.000	0-0	.000	0	0	0	0.0	2-0	0	0	0	0	0	0.0
TOTAL		39-25	593/15.2	38-137	.277	31-123	.252	3-6	.500	13	36	49	1.3	34-0	13	17	5	16	110	2.8

Single Game Highs

Statistic	Value	
Points	12	vs Central Conn. St. 01/28/23
Rebounds	6	at Xavier 11/13/22, at Sacred Heart 02/09/23
Assists	3	at Marquette 11/27/22
Steals	3	vs Coppin St. 12/11/22
Blocks	1	5 times
FG Made	4	vs Central Conn. St. 01/28/23
FG Attempts	9	at Central Conn. St. 01/08/23
3FG Made	4	vs Central Conn. St. 01/28/23
3FG Attempts	8	vs Towson 11/19/22, at Central Conn. St. 01/08/23
FT Made	1	at Michigan 11/11/22, at Xavier 11/13/22, vs Merrimack 02/04/23
FT Attempts	2	at Michigan 11/11/22, at Xavier 11/13/22, vs Merrimack 02/04/23



Arizona St. Women's Basketball
Individual Career Summaries
All games

Page 5/9
as of Nov 28, 2023

RADOCAJ, Marina

				Field Goals		3-Point		F-Throws		Rebounds									Scoring	
SEASON	TEAM	GP-GS	MIN/AVG	FG-FGA	FG%	3FG-3FGA	3FG%	FT-FTA	FT%	OFF	DEF	TOT	AVG	PF-FO	A	TO	BLK	STL	PTS	AVG
2023-24	ASU	4-0	13/3.4	1-3	.333	1-2	.500	0-0	.000	1	3	4	1.0	3-0	0	1	0	1	3	0.8
TOTAL		4-0	13/3.4	1-3	.333	1-2	.500	0-0	.000	1	3	4	1.0	3-0	0	1	0	1	3	0.8

Single Game Highs

Statistic	Value	
Points	3	vs UTSA 11/06/23
Rebounds	3	vs Montana St. 11/10/23
Steals	1	vs UTSA 11/06/23
FG Made	1	vs UTSA 11/06/23
FG Attempts	2	vs UTSA 11/06/23
3FG Made	1	vs UTSA 11/06/23
3FG Attempts	1	vs UTSA 11/06/23, vs Montana St. 11/10/23

ROBINSON, Jaylah

				Field Goals		3-Point		F-Throws		Rebounds									Scoring	
SEASON	TEAM	GP-GS	MIN/AVG	FG-FGA	FG%	3FG-3FGA	3FG%	FT-FTA	FT%	OFF	DEF	TOT	AVG	PF-FO	A	TO	BLK	STL	PTS	AVG
2022-23	ASU	1-0	1/1.5	0-0	.000	0-0	.000	0-0	.000	0	0	0	0.0	0-0	0	2	0	0	0	0.0
TOTAL		1-0	1/1.5	0-0	.000	0-0	.000	0-0	.000	0	0	0	0.0	0-0	0	2	0	0	0	0.0



Arizona St. Women's Basketball
Individual Career Summaries
All games

Page 6/9
as of Nov 28, 2023

SIMMONS, Jaddan

				Field Goals		3-Point		F-Throws		Rebounds									Scoring	
SEASON	TEAM	GP-GS	MIN/AVG	FG-FGA	FG%	3FG-3FGA	3FG%	FT-FTA	FT%	OFF	DEF	TOT	AVG	PF-FO	A	TO	BLK	STL	PTS	AVG
2020-21	ASU	24-24	725/30.2	76-225	.338	11-62	.177	96-121	.793	26	50	76	3.2	38-0	65	49	4	27	259	10.8
2021-22	ASU	26-26	760/29.2	77-196	.393	21-65	.323	75-105	.714	23	66	89	3.4	56-1	73	46	10	43	250	9.6
2022-23	ASU	27-27	997/36.9	115-304	.378	16-57	.281	90-119	.756	49	75	124	4.6	74-1	84	55	18	50	336	12.4
2023-24	ASU	8-8	267/33.4	22-62	.355	5-14	.357	41-50	.820	7	25	32	4.0	23-0	26	15	3	17	90	11.3
TOTAL		85-85	2749/32.3	290-787	.368	53-198	.268	302-395	.765	105	216	321	3.8	191-2	248	165	35	137	935	11.0

Single Game Highs

Statistic	Value	
Points	22	at Washington St. 02/18/22, vs Northern Ariz. 11/07/22
Rebounds	10	vs UCLA 03/01/23
Assists	7	vs California 01/01/21, vs UTSA 12/04/21
Steals	6	vs California 02/10/23
Blocks	3	vs Northern Ariz. 11/07/22
FG Made	9	vs Washington St. 01/27/23
FG Attempts	19	vs UCLA 03/01/23
3FG Made	3	4 times
3FG Attempts	8	at Southern California 01/31/21
FT Made	11	vs Arizona 01/22/23
FT Attempts	14	vs Arizona 01/22/23



Arizona St. Women's Basketball
Individual Career Summaries
All games

Page 7/9
as of Nov 28, 2023

SKINNER, Tyi

				Field Goals		3-Point		F-Throws		Rebounds										Scoring	
SEASON	TEAM	GP-GS	MIN/AVG	FG-FGA	FG%	3FG-3FGA	3FG%	FT-FTA	FT%	OFF	DEF	TOT	AVG	PF-FO	A	TO	BLK	STL	PTS	AVG	
2020-21	UD	29-2	588/20.3	80-240	.333	30-121	.248	64-80	.800	13	33	46	1.6	59-0	51	59	2	25	254	8.8	
2021-22	UD	32-30	1080/33.7	139-405	.343	66-187	.353	66-84	.786	19	71	90	2.8	68-2	105	86	3	25	410	12.8	
2022-23	ASU	28-28	1025/36.6	175-485	.361	68-196	.347	121-155	.781	16	61	77	2.8	82-2	67	77	3	48	539	19.3	
TOTAL FOR ASU		28-28	1025/36.6	175-485	.361	68-196	.347	121-155	.781	16	61	77	2.8	82-2	67	77	3	48	539	19.3	
TOTAL		89-60	2693/30.3	394-1130	.349	164-504	.325	251-319	.787	48	165	213	2.4	209-4	223	222	8	98	1203	13.5	

Single Game Highs

Statistic	Value	
Points	29	at Grand Canyon 11/30/22, vs Missouri 12/04/22
Rebounds	10	at California 01/02/23
Assists	7	5 times
Steals	4	at Montana St. 11/15/22, vs Stanford 02/12/23, vs Colorado 02/17/23
Blocks	1	8 times
FG Made	10	at Towson 03/03/22, at Arizona 12/29/22, at UCLA 02/05/23
FG Attempts	29	vs Oregon St. 01/08/23
3FG Made	6	vs Missouri 12/04/22, at UCLA 02/05/23
3FG Attempts	14	vs Oregon St. 01/08/23
FT Made	15	at Grand Canyon 11/30/22
FT Attempts	17	at Grand Canyon 11/30/22

SOUSA, Isadora

				Field Goals		3-Point		F-Throws		Rebounds										Scoring	
SEASON	TEAM	GP-GS	MIN/AVG	FG-FGA	FG%	3FG-3FGA	3FG%	FT-FTA	FT%	OFF	DEF	TOT	AVG	PF-FO	A	TO	BLK	STL	PTS	AVG	
2021-22	ASU	7-0	70/10.0	4-16	.250	2-11	.182	2-4	.500	3	8	11	1.6	6-0	4	11	3	0	12	1.7	
2022-23	ASU	23-7	348/15.1	30-67	.448	4-16	.250	11-16	.688	21	54	75	3.3	23-0	25	16	2	12	75	3.3	
TOTAL		30-7	418/13.9	34-83	.410	6-27	.222	13-20	.650	24	62	86	2.9	29-0	29	27	5	12	87	2.9	

Single Game Highs

Statistic	Value	
Points	9	vs Utah 02/19/23
Rebounds	12	vs American 11/25/22
Assists	4	vs UCLA 03/01/23
Steals	2	at Grand Canyon 11/30/22, vs Washington St. 01/27/23
Blocks	1	5 times
FG Made	3	4 times
FG Attempts	7	vs Utah 02/19/23
3FG Made	1	6 times
3FG Attempts	4	vs UTSA 12/04/21
FT Made	5	at New Mexico 11/20/22
FT Attempts	6	at New Mexico 11/20/22



Arizona St. Women's Basketball
Individual Career Summaries
All games

Page 8/9
as of Nov 28, 2023

THOMPSON, Journey

				Field Goals		3-Point		F-Throws		Rebounds										Scoring	
SEASON	TEAM	GP-GS	MIN/AVG	FG-FGA	FG%	3FG-3FGA	3FG%	FT-FTA	FT%	OFF	DEF	TOT	AVG	PF-FO	A	TO	BLK	STL		PTS	AVG
2022-23	ASU	13-3	142/10.9	17-39	.436	0-0	.000	9-10	.900	12	27	39	3.0	19-0	1	7	6	6		43	3.3
2023-24	ASU	8-4	147/18.3	20-41	.488	0-1	.000	16-25	.640	18	22	40	5.0	21-0	1	12	5	3		56	7.0
TOTAL		21-7	289/13.8	37-80	.463	0-1	.000	25-35	.714	30	49	79	3.8	40-0	2	19	11	9		99	4.7

Single Game Highs

Statistic	Value	
Points	13	vs Montana St. 11/10/23
Rebounds	12	vs Oregon St. 01/08/23, vs Montana St. 11/10/23
Assists	1	vs Massachusetts 12/02/22, at Grambling 11/16/23
Steals	2	vs Prairie View 12/17/22, vs UTSA 11/06/23
Blocks	2	vs Prairie View 12/17/22, vs Montana St. 11/10/23
FG Made	5	vs Massachusetts 12/02/22, vs Idaho St. 11/19/23, vs High Point 11/25/23
FG Attempts	10	vs Montana St. 11/10/23
3FG Attempts	1	vs Montana St. 11/10/23
FT Made	6	vs San Francisco 11/13/23
FT Attempts	7	vs San Francisco 11/13/23

TOURE, Kadidia

				Field Goals		3-Point		F-Throws		Rebounds										Scoring	
SEASON	TEAM	GP-GS	MIN/AVG	FG-FGA	FG%	3FG-3FGA	3FG%	FT-FTA	FT%	OFF	DEF	TOT	AVG	PF-FO	A	TO	BLK	STL		PTS	AVG
2022-23	JMU	21-0	166/7.9	25-56	.446	1-4	.250	20-28	.714	18	23	41	2.0	30-0	9	18	3	9		71	3.4
2023-24	ASU	8-6	180/22.6	32-63	.508	0-4	.000	12-23	.522	17	31	48	6.0	23-0	6	10	1	9		76	9.5
TOTAL FOR ASU		8-6	180/22.6	32-63	.508	0-4	.000	12-23	.522	17	31	48	6.0	23-0	6	10	1	9		76	9.5
TOTAL		29-6	346/11.9	57-119	.479	1-8	.125	32-51	.627	35	54	89	3.1	53-0	15	28	4	18		147	5.1

Single Game Highs

Statistic	Value	
Points	22	vs San Francisco 11/13/23
Rebounds	14	vs San Francisco 11/13/23
Assists	3	vs Idaho St. 11/19/23
Steals	3	vs Queens (NC) 11/13/22, vs San Francisco 11/13/23, vs Idaho St. 11/19/23
Blocks	2	vs Liberty 11/23/22
FG Made	9	vs San Francisco 11/13/23
FG Attempts	15	at Grambling 11/16/23
3FG Made	1	at Coastal Carolina 01/26/23
3FG Attempts	3	vs San Francisco 11/13/23
FT Made	6	at Grambling 11/16/23
FT Attempts	9	at Grambling 11/16/23



Arizona St. Women's Basketball
Individual Career Summaries
All games

Page 9/9
as of Nov 28, 2023

WIGGINS, Morasha

				Field Goals		3-Point		F-Throws		Rebounds									Scoring	
SEASON	TEAM	GP-GS	MIN/AVG	FG-FGA	FG%	3FG-3FGA	3FG%	FT-FTA	FT%	OFF	DEF	TOT	AVG	PF-FO	A	TO	BLK	STL	PTS	AVG
2021-22	UNC	21-0	174/8.3	10-38	.263	6-19	.316	6-16	.375	12	18	30	1.4	19-0	5	5	1	8	32	1.5
2023-24	ASU	6-0	76/12.6	6-12	.500	0-2	.000	6-9	.667	2	6	8	1.3	5-0	1	4	1	3	18	3.0
TOTAL FOR ASU		6-0	76/12.6	6-12	.500	0-2	.000	6-9	.667	2	6	8	1.3	5-0	1	4	1	3	18	3.0
TOTAL		27-0	250/9.2	16-50	.320	6-21	.286	12-25	.480	14	24	38	1.4	24-0	6	9	2	11	50	1.9

Single Game Highs

Statistic	Value	
Points	10	vs App State 11/17/21
Rebounds	4	vs App State 11/17/21, at Grambling 11/16/23
Assists	1	6 times
Steals	2	vs N.C. A&T 11/09/21
Blocks	1	at Wake Forest 02/03/22, vs High Point 11/25/23
FG Made	3	vs App State 11/17/21
FG Attempts	6	vs App State 11/17/21, vs San Francisco 11/13/23
3FG Made	2	vs App State 11/17/21
3FG Attempts	3	vs App State 11/17/21, vs Virginia 01/20/22, vs Duke 02/27/22
FT Made	4	vs San Francisco 11/13/23
FT Attempts	4	vs App State 11/17/21, vs Washington 11/27/21, vs San Francisco 11/13/23