



SUN DEVIL

WOMEN'S TENNIS

@SunDevilWTennis

@SunDevilWTennis



ASU WOMEN'S TENNIS NOTES

CONTACT: OLIVIA DOWELL | OIDOWELL@ASU.EDU | C: 913-633-6542

2024 Sun Devil Women's Tennis Schedule

All matches listed in Arizona Time

Date	Opponent	TV	Time/Result
Jan. 13	UC Davis.....		W, 7-0
Jan. 13	UCSD.....		W, 7-0
Jan. 20	Fresno State.....		W, 7-0
ITA Kickoff Weekend (at Ohio State in Columbus, Ohio)			
Jan. 26	Kansas.....		11 a.m.
Jan. 27	Ohio State or Notre Dame.....		TBD
Feb. 4	at San Diego.....		2 p.m.
Feb. 9-12	National Team Indoors (Seattle, Wash.).....		All Day
Feb. 10	Arkansas.....		12 p.m.
Feb. 17	Oklahoma State.....		12 p.m.
Feb. 18	Cal Poly.....		12 p.m.
Feb. 25	Ohio State.....		12 p.m.
March 5	at Baylor.....		12 p.m.
March 8	Stanford*.....		1:30 p.m.
March 9	California*.....		12 p.m.
March 13	NAU.....		1:30 p.m.
March 15	at UCLA*.....		1:30 p.m.
March 16	at USC*.....		12 p.m.
March 22	at Oregon*.....		12 p.m.
April 5	Washington State*.....		1:30 p.m.
April 6	Washington*.....		12 p.m.
April 12	at Utah*.....		1:30 p.m.
April 14	at Colorado*.....		11 a.m.
April 20	Arizona*.....		12 p.m.
April 24-28	Pac-12 Championships (Ojai, Calif.).....		All Day
May 3-5	NCAA Regionals (TBD).....		TBD
May 10-11	NCAA Sweet 16 (TBD).....		TBD
May 16-19	NCAA Quarterfinals (Stillwater, Okla.).....		TBD
May 20-25	NCAA Individuals (Stillwater, Okla.).....		TBD

* - indicates Pac-12 Conference contest

Home matches in **BOLD**

Dual Overview

MATCH

4

vs. Kansas

Columbus, Ohio
Jan. 26 (11 a.m. AZT)

MATCH

5

vs. Ohio State or Notre Dame

Columbus, Ohio
Jan. 27 (TBD)

Team Overviews

SUN DEVILS

3-0, 0-0 Pac-12

Record

RV

Rank

Sheila McInerney

Head Coach



JAYHAWKS

0-0, 0-0 Big 12

Record

NR

Rank

Todd Chapman

Head Coach



BUCKEYES

1-1, 0-0 Big 10

Record

13

Rank

Melissa Schaub

Head Coach



FIGHTING IRISH

2-0, 0-0 ACC

Record

NR

Rank

Alison Silverio

Head Coach



National Rankings

ITA National Rankings

January 24

Rank	Team
1.	North Carolina
2.	<i>Stanford*</i>
3.	<i>Oklahoma State</i>
4.	Georgia
5.	Michigan
6.	Pepperdine
7.	NC State
8.	Florida
9.	Texas A&M
10.	Texas
11.	Virginia
12.	<i>UCLA*</i>
13.	<i>Ohio State</i>
14.	Auburn
15.	Duke
16.	Oklahoma
17.	Tennessee
18.	<i>USC*</i>
19.	<i>Cal*</i>
20.	<i>San Diego</i>
21.	Miami
22.	<i>Washington*</i>
23.	Central Florida
24.	Wisconsin
25.	Vanderbilt

Others receiving votes: **Arizona State**, **Baylor**, Florida State, Georgia Tech, SMU, South Carolina

Italicized indicates 2024 opponents

*Pac-12 opponents

PREVIEWING ITA KICKOFF WEEKEND

After beginning their January slate with three sweeps at Whiteman Tennis Center, Sun Devil Women's Tennis will be away from Tempe for the first time this season as they will travel to Columbus, Ohio, for the ITA Kickoff Weekend.

The top 60 teams in all of women's tennis are assigned to 15 host sites around the country for a two-day tournament with a spot at the ITA National Team Indoor Championships on the line.

There will be four teams competing in Columbus alongside the Sun Devils, including host No. 14 Ohio State, Kansas and Notre Dame.

Arizona State is the No. 3 seed in this regional and will face the No. 2- seed Kansas Jayhawks on Friday at 11 a.m. AZT. They will face either No.1- seed Ohio State or No. 4- seed Notre Dame on Saturday, with a start time to be determined.

If the Sun Devils win both of their matches in Columbus, they'll advance to the ITA Indoor Championships for the first time since 2020.

SUN DEVIL OUTLOOK

- Arizona State is coming off a 7-0 sweep over Fresno State this past Saturday after sweeping both UC Davis and UC San Diego 7-0 on January 13 to open the season 3-0 going to Columbus.
- Emilija Tverijonaite, one of the newcomers for the Sun Devils, has already been a boost for the Sun Devils. She has started in singles in each of the three home matches, playing primarily in the No. 4 spot. Against Fresno State, she won her singles match 6-0, 6-1.
- Giulia Morlet was named the Pac-12 Player of the Week on

January 16 for the second time of her career. She has three doubles wins on the season as she's partnered up with fellow seniors Rachel Hanford and Marianna Argyrokastriti on Court 2.

- The Sun Devils are represented in the singles/doubles polls. Marianna Argyrokastriti/Patricija Spaka are ranked No. 47 in doubles. Morlet (No. 61) and Tverijonaite (No. 68) are ranked nationally in singles.
- Chasing 600: Head coach Sheila McInerney picked up her 577th career victory in the sweep of Fresno State on Saturday and the women's tennis program picked up its 915th win.

PREVIEWING FRIDAY'S OPPONENT (KANSAS, 0-0)

- The Jayhawks are coming off competition at the Duel in the Desert back on January 13, which featured Kansas, Iowa State, Clemson and Arkansas, in Indian Wells, Calif. Friday's dual match with the Sun Devils marks the first dual of the season for Kansas.
- Dual in the Desert was a hidden dual format, where the team played singles and doubles against each team. The duo of Jocelyn Massey and Kyoka Kubo went undefeated in doubles.
- No. 110 ranked Gracie Mulville went 2-0 in singles in California with wins over Clemson's Eleni Louka and Iowa State's Anna Supatich Kuearum.
- Last season, the Jayhawks finished the 2023 season ranked No. 23 in the final ITA team rankings. They finished the season 15-8 in which they advanced to the second round of the NCAA Tournament.

Sun Devil Women's Tennis Notes

QUICK FACTS

Location Tempe, Ariz.
 Founded 1885
 Enrollment 140,759
 Nickname Sun Devils
 School Colors Maroon and Gold
 Affiliation NCAA Division I
 Conference Pac-12
 Facility Whiteman Tennis Center
 Facility Capacity 1200
 President Dr. Michael Crow
 Interim Vice President of Athletics Dr. James Rund
 Athletic Dept. Phone 480-965-4382
 Ticket Office Phone 480-727-0000
 Arena Whiteman Tennis Center

TEAM INFORMATION

Conference Pac-12
 All-Time Record 915-411 (.690)
 2023 Final Rank 26
 First year of women's tennis 1962
 NCAA appearances/Last 36/2023
 All-Americans 25

COACHING STAFF

Head Coach Sheila McInerney
 Alma mater USC '80
 Years at ASU 40th season
 Associate Head Coach Matt Langley
 Assistant Coach Blake Olmscheid

2023 RECAP

Record 17-7
 Pac-12 Record 7-3
 Final ranking 26

2023 TROPHY CASE

ITA Southwest's Most Improved Senior
 Domenika Turkovic
 ITA Scholar Athletes 8
 Pac-12 Academic Honor Roll 6

TEAM INFORMATION

Letterwinners Returning/Lost 6/2
 Newcomers 3

MEDIA RELATIONS

Contact Olivia Dowell
 Email oidowell@asu.edu
 Phone Number 913-633-6542
 Director Doug Tammaro
 Email tammaro@asu.edu
 Office 480-965-6592

ROSTER

Name	Year	Hometown (High School/Last School)
Marianna Argyrokastriti	Sr.	Athens, Greece (Justine Henin Academy)
Chelsea Fontenel	So.	Basel, Switzerland (IMG Academy)
Rachel Hanford	Sr.	Mississauga, Ontario (St. Martin Catholic Secondary School/Minnesota)
Natasha Hill	Sr.	Newport Beach, Calif. (Mater Dei)
Giulia Morlet	Sr.	Paris, France
Ada Pietrzyńska	Fr.	Warsaw, Poland
Patricija Spaka	Jr.	Liepaja, Latvia
Sara Svetac	Fr.	Split, Croatia (Gimnazijski kolegij Kraljica Jelena)
Emilija Tverijonaite	Fr.	Šiauliai, Lithuania. (Siauliu Simono Daukanto Inžinerijos Gimnazija)

PRONUNCIATION GUIDE

Marianna Argyrokastriti (MAR-ee-ahn-uh R-gee-row-ka-street-e)	Patricija Spaka (Pa-tree-seeya SPA-kuh)
Chelsea Fontenel (Fon-tin-nell)	Sara Svetac (sar-UH Sve-tats)
Giulia Morlet (pronounced like julia, more-lay)	Emilija Tverijonaite (e-meal-lia Veri-yo-night-e)
Ada Pietrzyńska (Ah-duh P-eh-strin-skuh)	Sheila McInerney (Mac-In-Ernie)
	Blake Olmscheid (Olm-schyde)

ROSTER BREAKDOWN

By Class	Returning Letterwinners
Freshman 3	Marianna Argyrokastriti
Sophomore 1	Chelsea Fontenel
Junior 1	Rachel Hanford
Senior 4	Natasha Hill
	Giulia Morlet
	Patricija Spaka
By Geography	
California 1	
Canada 1	
France 1	
Greece 1	
Latvia 1	
Switzerland 1	
Poland 1	
Lithuania 1	
Croatia 1	

Sun Devil Women's Tennis Notes

2024 SINGLES RECORDS

Name	Overall	#1	#2	#3	#4	#5	#6
Marianna Argyrokastriti	3-0	-	1-0	2-0	-	-	-
Chelsea Fontenel	2-0	-	2-0	-	-	-	-
Rachel Hanford	3-0	-	-	-	1-0	-	2-0
Natasha Hill	0-0	-	-	-	-	-	-
Giulia Morlet	3-0	3-0	-	-	-	-	-
Ada Piestrzynska	1-0	-	-	-	-	-	1-0
Patricija Spaka	3-0	-	-	-	-	3-0	-
Sara Svetac	0-0	-	-	-	-	-	-
Emilija Tverijonaite	3-0	-	-	1-0	2-0	-	-

2024 DOUBLES RECORDS

Names	Overall	#1	#2	#3
Spaka/Fontenel	2-0	2-0	-	-
Morlet/Argyrokastriti	1-0	-	1-0	-
Tverijonaite/Piestrzynska	1-0	-	-	1-0
Morlet/Hanford	2-0	-	2-0	-

ASU'S 2024 RECORD

OVERALL

Home	3-0
Away	0-0
Neutral	0-0

BY DAY

Sunday	0-0
Monday	0-0
Tuesday	0-0
Wednesday	0-0
Thursday	0-0
Friday	0-0
Saturday	3-0

BY MONTH

January	3-0
February	0-0
March	0-0
April	0-0
May	0-0

OPPONENTS

Ranked	0-0
Unranked	3-0

Sun Devil Women's Tennis Notes

2024 MATCH-BY-MATCH

VS. UC DAVIS (JAN. 13, 2024)

NO. 25 ARIZONA STATE 7, UC DAVIS 0

SINGLES

1. No. 61 Giulia Morlet def. Arianna Stavropoulos, 6-0, 6-0
2. Chelsea Fontenel def. Kaia Wolfe, 6-1, 6-1
3. Marianna Argyrokastriti def. Mika Ikemori, 6-3, 6-3
4. No. 68 Emilija Tverijonaite def. Michelle Zell, 6-2, 6-3
5. Patricija Spaka def. Olive Maunupau, 6-3, 3-6 (10-4)
6. Rachel Hanford def. Carly Schwartzberg, 6-1, 6-2

Order of Finish: 1,2,6,4,3,5

DOUBLES

1. Patricija Spaka/Chelsea Fontenel vs. Arianna Stavropoulos/Kaia Wolfe 6-6, unfinished
2. Giulia Morlet/Marianna Argyrokastriti def. Daisy Maunupau/Olive Maunupau, 7-6
3. Emilija Tverijonaite/Ada Piestrzynska def. Michelle Zell/Carly Schwartzberg, 6-3

Order of Finish: 3, 2

VS. UCSD (JAN. 13, 2024)

NO. 25 ARIZONA STATE 7, UCSD 0

SINGLES

1. #61 Giulia Morlet def. Kelly Leung, 6-0, 6-0
2. Marianna Argyrokastriti def. Ella Pachi, 6-3, 6-0
3. #68 Emilija Tverijonaite def. Naomi Nguyen, 6-1, 6-1
4. Rachel Hanford def. Grace Gamal, 6-1, 6-0
5. Patricija Spaka def. Sophie Pearson, 6-0, 6-0
6. Ada Piestrzynska def. Katelyn Vu, 7-5, 6-2

Order of Finish: 4,1,5,3,2,6

DOUBLES

1. Patricija Spaka/Chelsea Fontenel def. Ella Pachi/Katelyn Vu, 6-0
2. Giulia Morlet/Rachel Hanford def. Kelly Leung/Polina Joraniak, 6-1
3. Emilija Tverijonaite/Marianna Argyrokastriti vs. Sophie Pearson/Naomi Nguyen, 3-3, unfinished

Order of Finish: 2, 1

VS. FRESNO STATE (JAN. 20, 2024)

ARIZONA STATE 7, FRESNO STATE 0

SINGLES

1. #61 Giulia Morlet def. Yinglak Jittakoat, 6-2, 6-3
2. Chelsea Fontenel def. Maltide Magrini, 7-6 (6-2), 7-6 (6-3)
3. Marianna Argyrokastriti def. Misaki Kobayashi, 6-1, 6-1
4. #68 Emilija Tverijonaite def. Carolina Piferi, 6-0, 6-1
5. Patricija Spaka def. Charlotte Gisclon, 6-3, 6-0
6. Rachel Hanford def. Mariya Vyshkina, 6-3, 6-3

DOUBLES

1. Patricija Spaka/Chelsea Fontenel def. Misaki Kobayashi/Maltide Magrini, 6-3
2. Giulia Morlet/Rachel Hanford def. Yinglak Jittakoat/Charlotte Gisclon, 6-2
3. Emilija Tverijonaite/Marianna Argyrokastriti vs. Carolina Piferi/Eliza Dunbar, 3-3, unfinished

Sun Devil Women's Tennis Notes



SHEILA MCINERNEY

Head Coach

Record at ASU 577-340
Hometown Rome, N.Y.
Education USC
Bachelor's Public Relations

- In the past 39 years, McInerney has seen a vast amount of change at Arizona State, from new athletic directors, new head coaches, schools added to the conference, and numerous renovations to athletic facilities. Through the countless changes across Arizona State, McInerney has continued to lead the women's tennis program in a successful direction heading into her 40th season in 2023-24 after being hired on Aug. 16, 1984.
- Since her first season as head coach in 1985, Sun Devil women's tennis has won 574 matches, advanced to 36 of 37 NCAA Tournaments (no championship season in 2020), including 35 straight, and has finished each season in the top-40 nationally. McInerney has twice been named both the Southwest Region Coach of the Year by the ITA as well as the Pac-12 Coach of the Year in the same season (2016, 2022). In 2016, she also was awarded the ITA Meritorious Service Award, which is given to an ITA coach who has gone "above and beyond" in their commitment and contributions to the ITA and college tennis in general.
- On the court, the Sun Devils have over 100 wins against ranked opponents since 2008. Leading the way for the tennis program have been 49 All-Americans and 51 All-Pac-12 student-athletes. Of these integral players in Arizona State's history, there have been 40 players ranked in the Top 50 of the singles season-end ranking and 21 in the Top 25 of the doubles season-end ranking.
- McInerney attended USC, where she captained the Trojans during her senior season. The four-time All-American also was a four-time Trojan Spirit Award winner, as voted by her teammates. The Trojans won three national championships during McInerney's collegiate career, and she was the national collegiate doubles runner-up three times and a singles semifinalist in 1977. McInerney collected a half-dozen USTA national titles and was a member of the 1977-80 USTA Junior Federation Cup team. As a professional, she played on the major international tour, earning a world ranking in the top 75. McInerney competed at three grand slam venues -- Wimbledon, French Open and the U.S. Open where she reached the round of 32. She also served a short term as assistant pro at the highly acclaimed L.A. Tennis Club.



MATT LANGLEY

Associate Head Coach

Hometown West Beach, Australia
Education MTSU

- Langley will begin his ninth season with the Sun Devils and has been named ITA Southwest Region Assistant Coach of the Year twice, in 2018 and 2022.
- Langley joined the Sun Devils in 2015 from Middle Tennessee State University, his alma mater, where he served as assistant coach for its women's tennis program. At MTSU, Langley helped coach the Blue Raiders to one of their best seasons in program history, recording a 19-5 overall record, 7-1 in Conference USA competition.
- A member of the MTSU men's tennis team from 2009-12, Langley was a two-year co-captain and three-time Sun Belt Conference Champion, earning two Most Outstanding Player honors at the Sun Belt Conference Championships. Langley also recorded three career appearances at the NCAA Championships.
- Langley graduated from MTSU with a degree in exercise science, and was a two-time Academic All-American and ITA Scholar-Athlete.
- Competed on the AVP Tour from 2005-18, recording three top-10 finishes in his career. His best finish was seventh place in 2016 at the Seattle Open.
- He played on San Diego State's club team, where he was selected to the all-tournament team in both 2004 and 2005.
- He graduated with a degree in psychology. He played at Grossmont College for two years before transferring to SDSU.



BLAKE OLMSCHIED

Assistant Coach

Hometown .. Farmington, Minn.
Education Saint Mary's (MN)

- Olmscheid enters his second season with the Sun Devils in 2023-24.
- Prior to coming to ASU, Olmscheid served as both head and assistant coach at Ottawa University (AZ) for two seasons for both tennis programs.
- In the 2022 season, the Ottawa women won their first GSAC championship, earned their first national ranking (#24 NAIA), and reached No. 1 in the NCCAA poll. Olmscheid was named the ITA West Region Assistant Coach of the Year. With the Ottawa men, they received votes in the NAIA Coaches Poll and reached the finals of the 2021 GSAC Tournament.
- Prior to Ottawa, Olmscheid spent the 2020 season as the Interim Head Coach of men's and women's tennis at the University of the Ozarks.
- Olmscheid was the Head Boys and Girls Tennis Coach at his alma mater, Farmington High School (Minn.), from 2017-19.
- Olmscheid played collegiate tennis at St. Mary's (MN), earning a degree in Graphic Design. He finished his career in the top-10 in doubles wins.

Sun Devil Women's Tennis Notes



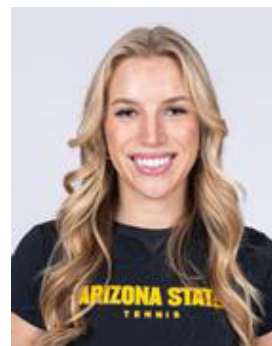
MARIANNA ARGYROKASTRITI
Sr.
Athens, Greece



CHELSEA FONTENEL
So.
Basel, Switzerland



RACHEL HANFORD
Sr.
Mississauga, Ontario



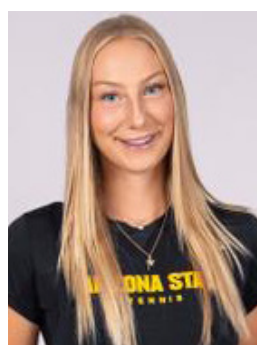
NATASHA HILL
Sr.
Newport Beach, Calif.



GIULIA MORLET
Sr.
Paris, France



ADA PIESTRYŃSKA
Fr.
Warsaw, Poland



PATRICIJA SPAKA
Jr.
Liepaja, Latvia



SARA SVETAC
Fr.
Split, Croatia



EMILIJĄ TVERIJONAITĖ
Fr.
Šiauliai, Lithuania



SHEILA MCINERNEY
Head Coach



MATT LANGLEY
Associate Head Coach



BLAKE OLMSCHIED
Assistant Coach