

# 2025-26 SUN DEVIL WBB GAME NOTES

## 2025-26 Schedule/Results (13-0, 0-0 Big 12)

DAY & DATE	OPPONENT	TIME/RESULT
MON., NOV. 3	COPPIN STATE (ESPN+)	W, 67-53
SAT., NOV. 8	EASTERN WASHINGTON (ESPN+)	W, 73-58
Thurs. Nov. 13	at San Diego (TBD)	W, 79-47
Sun., Nov. 16	at Santa Clara (ESPN+)	W, 82-79
SAT., NOV. 22	UNLV (ESPN+)	W, 56-53
TUES., NOV. 25	UTAH TECH (ESPN+)	W, 81-54

### THANKSGIVING MTE (NOV. 28-30 - SAN DIEGO, LITTLE ROCK, SEMO)

FRI., NOV. 28	ASU vs. LITTLE ROCK (ESPN+)	W, 59-41
SAT., NOV. 29	ASU vs. SEMO (ESPN+)	W, 85-56

### BRIANN JANUARY CLASSIC (DEC. 5-6 - MCNEESE, SAN FRANCISCO)

FRI., DEC. 5^	MCNEESE (ESPN+)	W, 57-47
SAT., DEC. 6^	SAN FRANCISCO (ESPN+)	W, 67-44

Tues., Dec. 9	at Penn State (Big Ten Network)	W, 74-60
---------------	---------------------------------	----------

Sun., Dec. 14	at Oregon State (ESPN+)	W, 55-53 (OT)
Tues., Dec. 16	at Gonzaga (ESPN+)	W, 68-66

SUN., DEC. 21	COLORADO* (ESPN+)	5 P.M. MST
---------------	-------------------	------------

Wed., Dec. 31	at Utah* (ESPN+)	2 p.m. MST
Sat., Jan. 3	at BYU* (ESPN+)	2 p.m. MST

WED., JAN. 7	UCF*	6:30 P.M. MST
Sun., Jan. 11	at TCU* (ESPN+)	4 p.m. CST/3 p.m. MST

SAT., JAN. 17	KANSAS*	2 P.M. MST
---------------	---------	------------

Wed., Jan. 21	at West Virginia* (ESPN+)	7 p.m. EST/5 p.m. MST
Sat., Jan. 24	at Cincinnati* (ESPN+)	2 p.m. EST/12 p.m. MST

WED., JAN. 28	ARIZONA* (ESPN+)	6:30 P.M. MST
SUN., FEB. 1	KANSAS STATE* (ESPN+)	2 P.M. MST

WED., FEB. 4	OKLAHOMA STATE* (ESPN+)	6:30 P.M. MST
Sat., Feb. 7	at Baylor* (FS1)	5 p.m. CST/4 p.m. MST

WED., FEB. 11	UTAH* (ESPN+)	6:30 P.M. MST
Sat., Feb. 14	at Arizona* (ESPN+)	11 a.m. MST

Wed., Feb. 18	at Iowa State* (ESPN+)	6:30 p.m. CST/5:30 p.m. MST
SAT., FEB. 21	HOUSTON* (ESPN+)	2 P.M. MST

WED., FEB. 25	BYU* (ESPN+)	6:30 P.M. MST
Sun., Mar. 1	at Texas Tech* (ESPN+)	2 p.m. CST/1 p.m. MST

### Big 12 Women's Basketball Tournament - Kansas City, Mo. (T-Mobile Center)

March 4-8/9	TBD	TBD
-------------	-----	-----

Home games (listed in BOLD CAPS).

\* - Big 12 Game

^ - Games will be played at Mullett Arena

## Game No. 14

## Arizona State

(13-0, 0-0 Big 12)

vs.

## Colorado

(9-3, 0-0 Big 12)

Sunday, December 21, 2025

5 p.m. MST • Desert Financial Arena • Tempe, Ariz.

ESPN+ • KDUS AM 1060

### Up next

After finishing non-conference play with a perfect 13-0 record, the Sun Devil women's basketball team starts Big 12 play on Sunday (5 p.m. MST) when it hosts Colorado (9-3, 0-0). The game will be ASU's first at home since Dec. 6. It concluded its non-conference slate with three road games. It started the trip with a 74-60 win at Penn St. and concluded with consecutive two-point wins – 55-53 (OT) at Oregon St. and 68-66 at Gonzaga.

### Watch/Listen

Sunday's game can be seen on ESPN+ (Briden Bell/Jody Jackson) and heard on KDUS AM 1060 (coverage will start at 4:30 p.m. MST). The state of Arizona's 2010 and 2019 Broadcaster of the Year Jeff Munn, who on Dec. 4, 2025 was named a recipient of the Arizona Media Association Lifetime Service Award, is in his 22nd season as the voice of ASU WBB.

### Sizing up the Big 12

If non-conference play is any indication, the Big 12 will be one of the most competitive conferences in the country this season. **As of Dec. 17, the Big 12...**

- Had four teams start 12-0 this season, while the rest of Division I has combined for four such starts through Dec. 17.
- Was one of two nationally to have at least nine double-digit win teams.
- Ranked second among Power Four leagues in total record against P4 opponents (19-14, .576).
- Had had five different teams defeat an AP Top 25 opponent this season, tied for second most among all DI conferences going into Week 7.
- Joined the Big Ten and SEC as the three leagues nationally that have a non-conference winning percentage above .800 so far this season. No other league outside of those three has a non-conference winning percentage above .700.
- And by the way, ASU is one of 12 teams in the nation with an unbeaten record, joining fellow Big 12 mates Texas Tech (13-0) Iowa State (12-0), and TCU (11-0).

### Sun Devil WBB recognized as USBWA Team of the Week

On Dec. 16, 2025, the United States Basketball Writers Association named ASU its team of the week after its wins at Penn St. and at Oregon St.

### 2025-26 Sun Devils make history

On Dec. 6, 2025, this year's Sun Devil squad broke a 33-year-old record after it defeated San Francisco 67-44. By starting the season 10-0 (now 13-0), the 2025-26 Sun Devils established a new program standard for most consecutive wins to start a season. The current cast of Sun Devils eclipsed the record held by the 1992-93 team (9-0), coached by current Sun Devil radio analyst Maura McHugh.

### Series notes vs. Colorado

- ASU has won 14 of the last 17, or 14 of 18 when counting game it had to forfeit at CU in January 2023 due to not having enough healthy players.
- Only meeting last season: CU defeated ASU 84-59 in Boulder.
- CU's 70-62 win in February 2023 in Tempe ended ASU's streak of 14 straight wins in the series.

**SUN DEVIL**

W O M E N ' S B A S K E T B A L L

# 2025-26 SUN DEVIL WBB GAME NOTES

## SUN DEVIL WBB 2025-26 QUICK FACTS

### School Information

Location ..... Tempe, Ariz.  
 Founded ..... 1885  
 Enrollment ..... 194,000  
 Nickname ..... Sun Devils  
 Colors ..... Maroon and Gold  
 Conference ..... Big 12  
 Arena (Capacity) ..... Desert Financial Arena (14,198)  
 ..... Mullett Arena (5,000/Two home games in 2025-26)  
 President ..... Dr. Michael Crow  
 Athletic Director ..... Graham Rossini  
 WBB Administrators ..... Marcus Williams (Sr. Associate AD)  
 ..... Christina Wombacher (Sr. Associate AD/SWA)

### Staff Name (Season)

Head Coach ..... Molly Miller (1st)  
 Record at ASU (seasons) ..... 13-0 (1)  
 Career record (seasons) ..... 310-55 (12)  
 Assoc. HC/Dir. of Basketball Strategy ..... Stephanie Norman (1st)  
 Associate Head Coach ..... Jason Glover (1st)  
 Asst. Coach/Recruiting Coord. .... Daniel Barber (1st)  
 Assistant Coach ..... Abi Olajuwon (1st)  
 Asst. Coach/Basketball Ops Coord ..... Daejah Bernard (1st)  
 Dir. Player Development/Recruiting Ops... Ashleigh Lopez (1st)  
 Graduate Assistants ..... Katherine Brown  
 ..... Reili Richardson  
 Athletic Trainer ..... Analysa Mata

### Media Contacts

Media with inquiries and/or requests, please make sure to include Doug, Steve and Claudia on email.  
 Sr. Associate AD ..... Doug Tammamaro (credentials)  
 Cell/Email ..... 480-734-7795 / tammamaro@asu.edu  
 Associate SID ..... Steve Rodriguez  
 Cell/Email ..... 480-254-2489 / steve.rodriguez@asu.edu  
 Assistant SID ..... Claudia Knippers  
 Cell/Email ..... 404-764-6315 / claudia.knippers@asu.edu



### Did you know as a head coach Molly Miller....?

- Entered the 2025-26 campaign third in winning percentage among active coaches who have served at least five years as a Division I head coach. At the outset of the 2025-26 campaign, Miller (84.4 pct/297-55 career record) trailed only legendary coaches Geno Auriemma (88.3 percent/1,250-165 career record) and Kim Mulkey (85.9 percent/754-124 career record).
- Has won her last 43 non-NCAA Tournament games going back to last season when she was coaching at Grand Canyon University.
- Has won her last 31 home games going back to the 2023-24 season when she was the head coach at GCU.
- Won her 300th game as an NCAA head coach on Nov. 13, 2025.

### Dominant Devil defense

- Only three of ASU's 12 opponents – Santa Clara (77 points), Penn State (60), Gonzaga (60) – have scored more than 58 points.
- Only two opponent – Santa Clara (37 points) and Gonzaga (29) – have scored more than 25 points in the first half.
- ASU has held the opposition to 13 or fewer points in a quarter (52.0 ppg average) 27 times this season, including single digits 12 times.
- In its 67-44 win vs. San Francisco (Dec. 6), ASU held the Dons more than 30 points below their scoring average... ASU's 56-53 win over UNLV (Nov. 22) represented the first time the Lady Rebels were held to 53 or fewer points in 148 games.
- On Dec. 14, Oregon State (15 points) became the first ASU opponent in six games to reach a double-digit point total in the second quarter. ASU's previous five opponents scored a combined 28 points in the second quarter (5.6 ppg): Little Rock - 5, SEMO - 5, McNeese - 7 San Francisco - 7, Penn State - 4.
- The opposition has had 20 or more turnovers eight times this season, including a trio of 30-plus turnover games: 33 vs. Coppin State (Nov. 3), 31 vs. San Francisco (Dec. 6) and a season-high 36 at Penn State (Dec. 9).
- As of Dec. 19, Gabby Elliott has the two of the highest single-game totals for steals in the Big 12 this season: 8 vs. San Francisco, 7 vs. Coppin St.

### It's no coincidence...

ASU is 31st in the nation in scoring defense (54.5 ppg as of Dec. 19). When she assumed the reins of the program, Molly Miller emphasized defense as one of pillars of success of her past teams. Miller's last two Grand Canyon teams were among the best in the nation in scoring defense: 19th in 23-24 (56.4 ppg) and 31st in 24-25 (57.2 ppg). It should come as no surprise those teams won 83.6 percent of their games (56-11).

### Winning streaks

On Dec. 6, head coach Molly Miller's first ASU squad (10-0) surpassed the 1991-92 team (9-0) for the best start in school history. ASU's current overall winning streak of 13 games is the longest since the 2015-16 team tied the 2008-09 team for the school record for consecutive wins (15). Miller's Sun Devils are now one win away from tying the second-longest winning streak (14) accomplished by the 2014-15 team

#### Winning Streaks (By Number)

~15, Dec. 6, 2015 – Jan. 29, 2016  
 ~15, Jan. 28 – Mar. 5, 2009  
 14, Nov. 30, 2014 – Jan. 23, 2015  
 13, Nov. 3, 2025 - current  
 10, Nov. 17, 2013 – Dec. 30, 2013  
 10, Jan. 24 – Mar. 6, 2006  
 ~ - School Record

#### Winning Streaks (By Date)

13, Nov. 3, 2025 - current  
 15, Dec. 6, 2015 – Jan. 29, 2016  
 14, Nov. 30, 2014 – Jan. 23, 2015  
 10, Nov. 17, 2013 – Dec. 30, 2013  
 ~15, Jan. 28 – Mar. 5, 2009  
 10, Jan. 24 – Mar. 6, 2006  
 ~ - School Record

**SUN DEVIL**

W O M E N ' S B A S K E T B A L L

# 2025-26 SUN DEVIL WBB GAME NOTES

## Team notes

- ASU has the top two rebounding games by a Big 12 team this season: vs. Utah Tech (62) & vs. Santa Clara (59). Its rebounding effort vs. Utah Tech represented the third time in the last 25 years it had at least 60 rebounds in a game.
- ASU has outscored the opposition by an average of 21.1-12.5 in points off turnovers this season... It has had more second chance points than its opponent in all but three games this season. Avg: ASU 10.8-6.9... Its bench has outscored the opposition's reserves 10 times in 13 games this season.
- ASU has scored 20 or more points in a quarter 15 times this season.
- In their win at San Diego (Nov. 13), the Sun Devils tied the single-game program record for most 3-pointers in a game (14). As of Dec. 19, ASU's 63.6 shooting performance from beyond the arc in that game is the second-highest 3-point shooting percentage by a Big 12 team this season.
- ASU's 19 steals vs. Coppin State are tied for the second-highest total by a Big 12 team this season.
- The opposition is averaging 50.3 ppg when ASU has played at home (eight games). Eastern Washington's 58 points are the most scored by a visiting team this season.
- Six different players have led or tied for the team lead in scoring: McKinna Brackens (5x), Gabby Elliott (5x), Marley Washenitz (1x), Amaya Williams (1x), Heloisa Carrera (2x) and Jyah LoVett (1).
- Seven Sun Devils have scored in double figures multiple times: Brackens (11x), Elliott (10x), Washenitz (5x), Carrera (5x), LoVett (3x), Amaya Williams (4x) and Last-Tear Poa (2x).
- Five different players have led or tied for the team lead in rebounding: Brackens (7x), Elliott (3x), Washenitz (1x), Carrera (1x), Deborah Davenport (1x) and Martina Fantini (1x). Elliott's 16-rebound performance at Santa Clara, is tied for the most by a player in the Big 12 this season.

## Individual player notes

- Elliott has ASU's three highest single-game scoring totals this season: 30 points at Gonzaga (Dec. 16), 27 points at Penn State (Dec. 9), 24 points at San Diego (Nov. 13). In the contest at San Diego, Elliott knocked down six 3-pointers, one short of tying the single-game program record. In her last five games, Elliott leads the team in points per game (18.6), field goals (34), and steals per game (4.2).
- Brackens (double figures in scoring in her last 10 games) scored a career-high 23 points in consecutive games: at Santa Clara (Nov. 16) and vs. UNLV (Nov. 22). During the 10-game streak she has scored in double figures, Brackens is averaging 15.2 ppg, 8.1 rpg and is shooting 52.3 pct., including 50.0 pct 3FGs/9-18.
- Four different players have posted double-doubles this season: Brackens (5/16th in NCAA), Elliott (1), Poa (1) and Carrera (1).
- Poa (10 assists vs. SEMO and vs. Coppin State) and Williams (11 assists at San Diego) have combined for three double-digit assist games this season. Williams' 11 assists were the most for a Sun Devil in a single game since current graduate assistant Reili Richardson had 11 at Colorado State on Dec. 9, 2018. Poa hit the game-winning 3-pointer with 16 seconds remaining in overtime in ASU's 55-53 win at Oregon State (Dec. 14).

## Notable NCAA/Big 12 Team Rankings (Through games played Dec. 19)

Category	NCAA ranking	Big 12 ranking
Field goal pct. defense	38th (35.3)	6th (35.3)
Scoring defense	31st (54.5 ppg)	t-3rd (54.5 ppg)
TOs forced per game	30th (21.9)	2nd (21.9)
Scoring margin	58th (+14.9)	9th (+14.9)
Steals	39th (11.5 spg)	t-3rd (11.5 spg)
Turnover margin	54th (+4.85)	5th (+4.85)
Rebounding Defense		8th (33.85)
Defensive Rebounds		8th (27.46)

## Individual Big-12 Rankings (Through games played Dec. 19)

Player	Category	Rank (value)
Gabby Elliott	Scoring	9th (16.5 ppg)
McKinna Brackens	Scoring	17th (14.4 ppg)
McKinna Brackens	Rebounding	4th (7.9 rpg)
McKinna Brackens	Field goal pct.	9th (49.6)
Last-Tear Poa	Assists	12th (4.6 apg)
Gabby Elliott	Free Throw Pct.	14th (72.0)
Gabby Elliott	Steals	3rd (2.6 spg)
Marley Washenitz	Steals	t-12th (2.2 spg)
McKinna Brackens	Off-Rebounds	14th (2.4 rpg)
McKinna Brackens	Def-Rebounds	t-6th (5.5 rpg)
Gabby Elliott	Minutes	4th (32.6)
McKinna Brackens	Minutes	9th (30.9)

## New faces bring lots of experience

- Of the 10 new players on this year's roster, six players have played 50 or more games at the D1 level, including one student-athlete (Last-Tear Poa), who has now played in 113 games.
- Two of this season's newcomers – Marley Washenitz (91), Gabby Elliott (86) – have started more than 80 games. Acacia Hayes (75), Jordan Jones (72), who have yet to play this season, have started more than 70 games at the D1 level. In addition, McKinna Brackens has 47 starts in 70 career games.
- Both of ASU's returners from last season – Makayla Moore (82 games/33 starts), Jyah LoVett (61 games/38 starts) – also have a significant amount of experience. LoVett started 21 of 31 games in 2024-25, while Moore had five starts in the 21 games she played.

## GAME EXPERIENCE (DI TRANSFERS)

Player	CAREER GP/GS
Last-Tear Poa	113/37
Marley Washenitz	104/91
Gabby Elliott	94/86
Acacia Hayes	85/75
Jordan Jones	79/72
McKinna Brackens	70/47
Heloisa Carrera	26/13



# 2025-26 SUN DEVIL WBB GAME NOTES

## #HailMarley

Anyone who saw what turned out to be the game-winning 3-pointer made by Marley Washenitz in the Sun Devil women's basketball team's 56-53 win over UNLV on Nov. 22 – and is old enough to remember – might just have harkened back to the commercials of the early 90s that featured basketball Hall of Famers Michael Jordan and Larry Bird challenging each other over and over again to make improbable shots, something like a game of H-O-R-S-E.

What shot would Washenitz have challenged her opponent to make on that Saturday? This is what came to be known as the #HailMarley: With only seconds remaining in the game, the shot clock about to expire, with her back to the basket, save the ball before it rolls out of bounds and – in the same motion – turn around and fling a left-handed 3-pointer off the glass. For Washenitz, who came into the game having scored in double figures in each of ASU's first four games of the season, the improvisational shot was the first – and only – of her seven field goal attempts of the game that resulted in points.

## Sun Devil Athletics counts down to NCAA Women's Final Four

In October 2020, the NCAA officially named ASU, the city of Phoenix, and the Footprint Center as hosts for the Women's Final Four Tournament, to be held April 3, 5, 2026.

In August, Sun Devil Basketball's Head Coach Molly Miller joined several key community members at the Phoenix Sky Harbor Airport to unveil the official Countdown Clock to the event.

Unveiled alongside Phoenix Mayor Kate Gallago, 2026 Women's Final Four Committee Jay Parry, and NCAA Vice President for Women's Basketball Lynn Holzman, the clock is located at the busiest terminal in the airport, Terminal 4, on the west end of the baggage claim. The placement means it will see significant foot traffic to build maximum excitement.

Arizona State University had a significant presence at the event. ASU Athletic Director Graham Rossini, Sparky, and Senior Associate Athletics Director Christina Wombacher were on hand to help underscore the University's role as a proud stakeholder in bringing the Women's Final Four to the Valley for the first time.

## Big 12 schedule notes

- When ASU hosts Colorado in its first Big 12 contest on Dec. 21, it will be the squad's first home game since Dec. 6. Prior to the contest vs. Colorado will be road games at Penn State (Tues., Dec. 9), at Oregon State (Sun., Dec. 14), and at Gonzaga (Tues., Dec. 16).
- After the conference opener against Colorado, ASU will have its longest gap of the season between games (10 days). It will resume Big 12 play with consecutive road games in the state of Utah (at Utah on Dec. 31 and at BYU on Jan. 3). Following a home contest vs. UCF (Jan. 7), ASU will play at TCU (Jan. 11), the third time in four games it will be on the road following the holiday break.
- When ASU hosts Arizona on Jan. 28, it will be the first of three straight home games and four of five overall. Contests vs. Kansas State (Feb. 1) and Oklahoma State (Dec. 4) at Desert Financial Arena will precede ASU's only road game in the stretch, at Baylor on Feb. 7). The span will conclude with a rematch vs. Utah in Tempe (Feb. 11).
- ASU's game at West Virginia (Jan. 21) will be the second time the Sun Devils will be playing more than 2,000 miles away from home in 2025-26. The first instance will take place on Dec. 9 at Penn State, the first of three consecutive road games ASU will play on the road to conclude the non-conference portion of its schedule. After playing at West Virginia, ASU will play a second consecutive road game at Cincinnati (Jan. 24).

## ASU 2025-26 SCORING HIGHS / LOWS

### Most points (Game)

85 - vs. SEMO - 11.29.25  
82 - at Santa Clara - 11.16.25  
81 - vs. Utah Tech - 11.25.25

### Fewest points (Game)

55 - at Oregon State - OT - 12.14.25  
56 - vs. UNLV - 11.22.25  
57 - vs. McNeese - 12.5.25

### Most points (Quarter)

29 - vs. SEMO (3) - 11.29.25  
27 - vs. Coppin St. (4) - 11.3.25  
26 - 3x, last vs. Penn State (3) - 12.9.25

### Fewest points (Quarter)

7 - vs. UNLV (1) - 11.22.25  
8 - at Oregon State (3) - 12.14.25  
9 - vs. McNeese (3) - 12.5.25

### Most points (1st half)

50 - at Santa Clara - 11.16.25  
44 - vs. Utah Tech - 11.25.25  
40 - at San Diego - 11.13.25

### Fewest points (1st half)

26 - at Oregon State - 12.14.25  
28 - vs. UNLV - 11.22.25  
29 - vs. Coppin St. - 11.3.25

### Most points (2nd half)

53 - vs. SEMO - 11.29.25  
41 - 2x, last at vs. Penn State - 12.9.25  
39 - at San Diego - 11.13.25

### Fewest points (2nd half)

28 - vs. UNLV - 11.22.25  
26 - vs. Little Rock - 11.28.25  
24 - 2x, last at Oregon St. - 12.14.25

## OPP. 2025-26 SCORING HIGHS / LOWS

### Most points (Game)

77 - at Santa Clara - 11.16.25  
60 - at Gonzaga - 12.16.25  
60 - at Penn State - 12.16.25

### Fewest points (Game)

41 - vs. Little Rock - 11.28.25  
44 - vs. San Francisco - 12.6.25  
47 - 2x, last vs. McNeese - 12.5.25

### Most points (Quarter)

26 - vs. Eastern Wash. (4) - 11.8.25  
21 - vs. McNeese (4) - 12.5.25  
20 - 2x, last at Santa Clara (3,4) - 11.16.25

### Fewest points (Quarter)

4 - at Penn State (2) - 12.9.25  
5 - 2x, last vs. SEMO (2) - 11.28.25  
6 - at Oregon State (1) - 12.14.25

### Most points (1st half)

37 - at Santa Clara - 11.16.25  
29 - at Gonzaga - 12.16.25  
25 - vs. Coppin St. - 11.3.25

### Fewest points (1st half)

14 - vs. Little Rock - 11.28.25  
19 - vs. McNeese - 12.5.25  
20 - vs. San Francisco - 12.6.25

### Most points (2nd half)

40 - at Santa Clara - 11.16.25  
38 - at Penn State - 12.9.25  
37 - at Gonzaga - 12.16.25

### Fewest points (2nd half)

23 - at San Diego - 11.13.25  
24 - vs. San Francisco - 12.6.25  
27 - vs. Little Rock - 11.28.25

## 2024-25 INDIVIDUAL SCORING HIGHS – QUARTER AND HALF MOST POINTS IN A QUARTER

17 – Gabby Elliott (4th quarter) at Gonzaga, Dec. 16, 2025  
11 – Heloisa Carrera (3rd Quarter) vs. SEMO, Nov. 29, 2025  
10 – McKinna Brackens (3rd quarter) at Penn State, Dec. 9, 2025  
10 – Amaya Williams (2nd Quarter) vs. Little Rock, Nov. 28, 2025  
10 – McKinna Brackens (2nd Quarter) vs. Utah Tech, Nov. 25, 2025  
10 – Marley Washenitz (2nd Quarter) at San Diego, Nov. 13, 2025

## MOST POINTS IN A HALF

21 – Gabby Elliott (2nd half) at Gonzaga, Dec. 16, 2025  
16 – Gabby Elliott (2nd Half) vs. at Penn State, Dec. 9, 2025  
14 – McKinna Brackens (1st Half) vs. Utah Tech, Nov. 25, 2025  
14 – Gabby Elliott (2nd Half) vs. Coppin State, Nov. 3, 2025  
13 – McKinna Brackens (1st Half) at Santa Clara, Nov. 16, 2025  
13 – Gabby Elliott (1st Half) at San Diego, Nov. 13, 2025  
12 – Marley Washenitz (1st Half) at Gonzaga, Dec. 16, 2025  
12 – Amaya Williams (1st Half) vs. Little Rock, Nov. 28, 2025  
12 – McKinna Brackens (1st Half) vs. UNLV, Nov. 22, 2025  
12 – Gabby Elliott (1st Half) at Santa Clara, Nov. 16, 2025  
11 – Heloisa Carrera (2nd Half) vs. SEMO, Nov. 29, 2025  
11 – McKinna Brackens (2nd Half) vs. UNLV, Nov. 22, 2025  
11 – Gabby Elliott (2nd Half) at San Diego, Nov. 13, 2025  
11 – Marley Washenitz (1st Half) at San Diego, Nov. 13, 2025  
10 – Gabby Elliott (2nd Half) vs. McNeese, Dec. 5, 2025  
10 – Gabby Elliott (1st Half) vs. Utah Tech, Nov. 25, 2025  
10 – Heloisa Carrera (1st Half) vs. SEMO, Nov. 29, 2025  
10 – Heloisa Carrera (1st Half) vs. UNLV, Nov. 22, 2025  
10 – McKinna Brackens (2nd Half) at Santa Clara, Nov. 16, 2025  
10 – Marley Washenitz (2nd Half) vs. Eastern Washington, Nov. 8, 2025  
10 – Marley Washenitz (1st Half) vs. Coppin State, Nov. 3, 2025

**SUN DEVIL**

W O M E N ' S B A S K E T B A L L

# HEAD COACH MOLLY MILLER



- On March 22, 2025, Molly Miller agreed to join ASU as the next head coach its women's basketball program.
- A little more than a month into her ASU coaching career, made history by leading the Sun Devils to their best start in program history (13-0), eclipsing the 9-0 record set by the 1991-92 squad.
- ASU hired a proven winner in Miller who guided Grand Canyon University to a 32-3 record last season which included a 30-game winning streak and GCU's first berth in the NCAA Women's Tournament.
- Miller went 117-38 (.760) at GCU, and overall is 297-55 (.845) at the collegiate level that also included 180 wins in six seasons at her alma mater (Drury), where she served as an assistant coach and was a four-year letterwinner.
- Miller oversaw GCU's most successful stretch in program history. Over the last two seasons GCU won 84 percent of its games (56-11), including a school record 32 wins in 2024-25, a season that culminated with the Lopes earning their first NCAA Tournament berth. In addition to experiencing March Madness for the first time, GCU also captured both the WAC Tournament and regular season championships and set the conference record for consecutive wins (30).

- The 2025 WAC COY, Miller was named the WBCA Division II Coach of the Year in 2019 and again in 2020.
- Under Miller, Drury became the first Great Lakes Valley Conference program to win four consecutive titles and went 105-5 in conference play (55-0 at home) over her six-year tenure. Drury was ranked in the Division II top 25 for a nation-leading 111 consecutive weeks.
- Upon becoming Drury's head coach at age 28, Miller led her alma mater to the 2019 Division II Final Four. After a perfect 32-0 record in 2019-20 – when Drury was No. 1 every week in the Division II poll – the Panthers were denied a chance to return to the Final Four after the 2020 postseason was canceled due to Covid-19.
- A native of Springfield, Mo., in June 2025, the Springfield, Missouri, News-Leader ranked Miller No. 4 among Springfield's 25 most impactful coaches of the last 25 years.
- Molly and her husband, Derek have two children, Crosby and Cy.

## MOLLY MILLER'S CAREER COACHING RECORD

Year	School	Record	Conf. Record	Postseason/Notes
2025-26	Arizona State	13-0	0-0	Led ASU to best start in program history (12-0)
<b>Arizona State (1 season)</b>		<b>13-0</b>	<b>0-0</b>	
2024-25	Grand Canyon	32-3	16-0	NCAA First Round; WAC regular season & tournament champions
2023-24	Grand Canyon	24-8	16-4	WAC Tournament semifinalist
2022-23	Grand Canyon	21-10	12-6	WAC Tournament semifinalist
2021-22	Grand Canyon	22-10	14-4	WNIT First Round; WAC Tournament finalist
2020-21	Grand Canyon	18-7	8-4	WAC Tournament finalist
<b>Grand Canyon (5 seasons)</b>		<b>117-38</b>	<b>66-18</b>	
2019-20	Drury	32-0	20-0	Postseason canceled due to COVID-19
2018-19	Drury	35-1	18-0	NCAA Division II Final Four; GLVC regular season & tournament champions
2017-18	Drury	31-3	17-1	NCAA Division II Sweet 16; GLVC regular season & tournament champions
2016-17	Drury	30-4	17-1	NCAA Division II Sweet 16; GLVC regular season & tournament champions
2015-16	Drury	26-5	16-2	NCAA Division II Sweet 16; GLVC Tournament finalist
2014-15	Drury	26-4	17-1	NCAA Division II First Round; GLVC regular season & tournament champions
<b>Drury (6 seasons)</b>		<b>180-17</b>	<b>105-5</b>	
<b>Career Totals (12 seasons)</b>		<b>310-55</b>	<b>171-23</b>	

**SUN DEVIL**

W O M E N ' S B A S K E T B A L L

# 2025-26 SUN DEVIL WBB ROSTER

No.	Name	Pos.	Ht.	Yr.	Hometown/High School/Last School
0	Gabby Elliott	G	5-11	5th Yr.	Detroit, Mich./Detroit Edison Public School Academy/Penn State
1	Amaya Williams	G	5-8	Fr.	Mission Viejo, Calif./Mater Dei
4	Jyah LoVett	G	5-8	Jr.	San Gabriel, Calif./Bella Vista College Preparatory/SJSU
7	Martina Fantini	C	6-3	Fr.	Florence, Italy
10	Acacia Hayes	G	5-7	Sr.	Murfreesboro, Tenn./ Riverdale HS/Western Kentucky
11	Marley Washenitz	G	5-7	Sr.	Fairmont, W. Va./Fairmont Sr./Pittsburgh
12	Makayla Moore	G	6-0	Sr.	San Jose, Calif./Archbishop Mitty/Seattle U
13	Last-Tear Poa	G	5-11	5th Yr.	Melbourne, Australia/UC Senior Secondary College Lake Ginninderra/LSU
14	Heloisa Carrera	F	6-2	So.	São Paulo, Brazil/IMG Academy/Ole Miss
21	McKinna Brackens	F	6-1	Jr.	Fairfield, Texas/Fairfield/UNLV
22	Timya Grice	C	6-5	R-Fr.	Katy, Texas/Taylor
23	Jordan Jones	G	6-0	Sr.	Sylmar, Calif./Cheyenne East (Wyo.)/Denver
24	Deborah Davenport	G/F	6-2	R-Jr.	Cincinnati, Ohio/Woodward/Northwest Florida State College

**Head Coach:** Molly Miller (1st season)

**Associate Head Coach, Director of Basketball Strategy:** Stephanie Norman (1st season)

**Associate Head Coach:** Jason Glover (1st season)

**Assistant Coach, Recruiting Coordinator:** Daniel Barber (1st season)

**Assistant Coach:** Abi Olajuwon (1st season)

**Assistant Coach, Basketball Operations Coordinator:** Daejah Bernard (1st season)

**Director of Player Development, Recruiting Operations:** Ashleigh Lopez (1st season)

**Graduate Assistants:** Katherine Brown, Reili Richardson

## Pronunciation Guide

#1 Amaya Williams – UH-My-ah

#4 Jyah LoVett – Jie-ah Love-ett

#7 Martina Fantini – Faun-tee-nee

#10 Acacia Hayes – UH-kay-see-ah

#11 Marley Washenitz – Wash-in-itiz

#13 Last-Tear Poa – Last-Tier Poe-ah

#14 Heloisa Carrera – ee-low-ee-sah Kai-hair-ah

#22 Timya Grice – Tim-eye-ah



# 2025-26 SUN DEVIL WBB RADIO/TV ROSTER



**0** → GABBY ELLIOTT

Fifth Year | Guard | 5'11  
Detroit, Mich.  
Detroit Edison Public School Academy  
Penn State



**1** → AMAYA WILLIAMS

Freshman | Guard | 5'8  
Mission Viejo, Calif. | Mater Dei



**4** → JYAH LOVETT

Junior | Guard | 5'8  
San Gabriel, Calif.  
Bella Vista College Preparatory  
San Jose State University



**7** → MARTINA FANTINI

Freshman | Center | 6'3  
Florence, Italy



**10** → ACACIA HAYES

Senior | Guard | 5'7  
Murfreesboro, Tenn. | Riverdale HS  
Western Kentucky



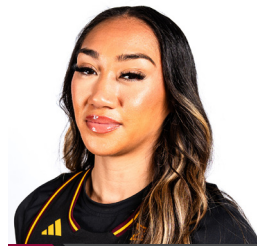
**11** → MARLEY WASHENITZ

Senior | Guard | 5'7  
Fairmont, W. Va. | Fairmont Sr.  
Pittsburgh



**12** → MAKAYLA MOORE

Senior | Guard | 6'0  
San Jose, Calif.  
Archbishop Mitty  
Seattle U



**13** → LAST-TEAR POA

Fifth Year | Guard | 5'11  
Melbourne, Australia  
Secondary College Lake Ginninderra  
Northwest Florida State | LSU



**14** → HELOISA CARRERA

Sophomore | Forward | 6'2  
São Paulo, Brazil | IMG Academy  
Ole Miss



**21** → MCKINNA BRACKENS

Junior | Forward | 6'1  
Fairfield, Texas | Fairfield  
UNLV



**22** → TIMYA GRICE

Redshirt Freshman | Center | 6'5  
Katy, Texas | Taylor



**23** → JORDAN JONES

Senior | Guard | 6'0  
Sylmar, Calif.  
Cheyenne East (Wyo.)  
Denver



**24** → DEBORAH DAVENPORT

Redshirt Junior | Guard/Forward | 6'2  
Cincinnati, Ohio | Woodward  
Northwest Florida State College



MOLLY MILLER

Head Coach  
First season



STEPHANIE NORMAN

Associate Head Coach,  
Director of Basketball Strategy  
First season



JASON GLOVER

Associate Head Coach  
First season



DANIEL BARBER

Assistant Coach,  
Recruiting Coordinator  
First season



ABI OLAJUWON

Assistant Coach  
First Season



DAEJAH BERNARD

Assistant Coach,  
Basketball Operations Coordinator  
First season



ASHLEIGH LOPEZ

Director of Player Development,  
Recruiting Operations  
First season

**SUN DEVIL**

W O M E N ' S   B A S K E T B A L L



2025-26 Arizona St. Women's Basketball  
Season Schedule/Results & Leaders  
All games

Page 1/1  
as of Dec 17, 2025

### Game Records

Record	Overall	Home	Away	Neutral
ALL GAMES	13-0	8-0	5-0	0-0
CONFERENCE	0-0	0-0	0-0	0-0
NON-CONFERENCE	13-0	8-0	5-0	0-0

### Team Results

Date	Opponent		Score	Att.	High Points	High Rebounds
11/03/2025	Coppin St.	W	67-53	4026	(17) WASHENITZ, Marley	(8) BRACKENS, McKinna
11/08/2025	Eastern Wash.	W	73-58	2261	(15) ELLIOTT, Gabby	(7) WASHENITZ, Marley
11/13/2025	at San Diego	W	79-47	619	(24) ELLIOTT, Gabby	(7) ELLIOTT, Gabby
11/16/2025	at Santa Clara	W	82-77	448	(23) BRACKENS, McKinna	(16) ELLIOTT, Gabby
11/22/2025	UNLV	W	56-53	2728	(23) BRACKENS, McKinna	(10) BRACKENS, McKinna
11/25/2025	Utah Tech	W	81-54	2227	(19) BRACKENS, McKinna	(10) BRACKENS, McKinna
11/28/2025	Little Rock	W	59-41	2108	(18) WILLIAMS, Amaya	(6) BRACKENS, McKinna
11/29/2025	Southeast Mo. St.	W	85-56	2321	(21) CARRERA, Heloisa	(10) CARRERA, Heloisa
12/05/2025	McNeese	W	57-47	2196	(19) ELLIOTT, Gabby	(15) BRACKENS, McKinna
12/06/2025	San Francisco	W	67-44	2414	(15) BRACKENS, McKinna	(5) ELLIOTT, Gabby
					(15) LOVETT, Jyah	(5) DAVENPORT, Deborah
12/09/2025	at Penn St.	W	74-60	1590	(27) ELLIOTT, Gabby	(11) BRACKENS, McKinna
12/14/2025	at Oregon St.	Wot	55-53	3143	(12) BRACKENS, McKinna	(7) CARRERA, Heloisa
					(12) CARRERA, Heloisa	
12/16/2025	at Gonzaga	W	68-66	4742	(30) ELLIOTT, Gabby	(6) FANTINI, Martina

### Attendance Summary

	Games	Attend	Avg/Game
Home	8	20281	2535
Away	5	10542	2108
Neutral	0	0	0
<b>Total</b>	<b>13</b>	<b>30823</b>	<b>2371</b>





# 2025-26 Arizona St. Women's Basketball Combined Team Statistics All games

Page 1/1  
as of Dec 17, 2025

## Game Records

Record	Overall	Home	Away	Neutral
ALL GAMES	13-0	8-0	5-0	0-0
CONFERENCE	0-0	0-0	0-0	0-0
NON-CONFERENCE	13-0	8-0	5-0	0-0

## Score by Periods

Team	1st	2nd	3rd	4th	OT	TOT
Arizona St.	193	254	213	238	5	903
Opponents	166	137	179	224	3	709

## Team Box Score

No.	Player				Total		3-Point		F-Throw		Rebounds														
		GP-GS	MIN	AVG	FG-FGA	FG%	3FG-3FGA	3FG%	FT-FTA	FT%	OFF	DEF	TOT	AVG	PF	DQ	A	TO	BLK	STL	PTS	AVG			
0	ELLIOTT, Gabby	13-13	424:56	32.7	81-194	.418	16-52	.308	36-50	.720	19	53	72	5.5	25	0	25	36	3	34	214	16.5			
21	BRACKENS, McKinna	12-12	371:09	30.9	67-135	.496	10-24	.417	29-49	.592	29	66	95	7.9	20	0	26	20	9	13	173	14.4			
14	CARRERA, Heloisa	13-13	323:58	24.9	55-105	.524	0-0	.000	11-13	.846	28	47	75	5.8	36	0	7	24	6	6	121	9.3			
11	WASHENITZ, Marley	13-13	388:14	29.9	42-113	.372	14-52	.269	20-29	.690	5	49	54	4.2	41	1	41	25	2	28	118	9.1			
13	POA, Last-Tear	11-10	256:58	23.4	20-54	.370	6-19	.316	23-29	.793	9	21	30	2.7	24	0	51	40	3	14	69	6.3			
4	LOVETT, Jyah	13-0	231:05	17.8	26-57	.456	6-18	.333	9-14	.643	3	19	22	1.7	18	0	11	18	0	18	67	5.2			
1	WILLIAMS, Amaya	13-3	220:31	17.0	25-58	.431	3-13	.231	8-13	.615	5	15	20	1.5	15	0	27	20	4	14	61	4.7			
7	FANTINI, Martina	13-0	135:19	10.4	15-28	.536	0-1	.000	1-6	.167	17	24	41	3.2	20	0	6	16	7	7	31	2.4			
24	DAVENPORT, Deborah	13-1	181:37	14.0	13-28	.464	1-2	.500	1-4	.250	20	23	43	3.3	17	0	5	13	6	10	28	2.2			
12	MOORE, Makayla	12-0	81:03	6.8	6-17	.353	3-11	.273	0-0	.000	4	5	9	0.8	6	0	2	2	1	6	15	1.3			
22	GRICE, Timya	5-0	10:09	2.0	1-2	.500	0-0	.000	4-8	.500	2	3	5	1.0	1	0	0	1	0	0	6	1.2			
Team											24	32	56					6							
Total		13	2625		351-791	.444	59-192	.307	142-215	.660	165	357	522	40.2	223	1	201	221	41	150	903	69.5			
Opponents		13	2625		255-723	.353	96-305	.315	103-161	.640	133	307	440	33.8	245	5	148	284	40	100	709	54.5			

## Team Statistics

	ASU	OPP
<b>Scoring</b>		
Points per game	69.5	54.5
Scoring margin	+14.9	-
<b>Field goals-att</b>		
Field goal pct	.444	.353
<b>3 point fg-att</b>		
3-point FG pct	.307	.315
3-pt FG made per game	4.5	7.4
<b>Free throws-att</b>		
Free throw pct	.660	.640
F-Throws made per game	10.9	7.9
<b>Rebounds</b>		
Rebounds per game	40.2	33.8
Rebounding margin	+6.3	-
<b>Assists</b>		
Assists per game	15.5	11.4
<b>Turnovers</b>		
Turnovers per game	17.0	21.8
Turnover margin	+4.8	-
Assist/turnover ratio	0.9	0.5
<b>Steals</b>		
Steals per game	11.5	7.7
<b>Blocks</b>		
Blocks per game	3.2	3.1
<b>Winning streak</b>		
Home win streak	8	-
<b>Attendance</b>		
Home games-Avg/Game	8-2535	5-2108
Neutral site-Avg/Game	-	0-0

## Team Results

Date	Opponent		Score	Att.
11/03/2025	Coppin St.	W	67-53	4026
11/08/2025	Eastern Wash.	W	73-58	2261
11/13/2025	at San Diego	W	79-47	619
11/16/2025	at Santa Clara	W	82-77	448
11/22/2025	UNLV	W	56-53	2728
11/25/2025	Utah Tech	W	81-54	2227
11/28/2025	Little Rock	W	59-41	2108
11/29/2025	Southeast Mo. St.	W	85-56	2321
12/05/2025	McNeese	W	57-47	2196
12/06/2025	San Francisco	W	67-44	2414
12/09/2025	at Penn St.	W	74-60	1590
12/14/2025	at Oregon St.	Wot	55-53	3143
12/16/2025	at Gonzaga	W	68-66	4742



2025-26 Arizona St. Women's Basketball  
Extended Season Box Score  
All games

Page 1/1  
as of Dec 17, 2025

Game Records

Record	Overall	Home	Away	Neutral
ALL GAMES	13-0	8-0	5-0	0-0
CONFERENCE	0-0	0-0	0-0	0-0
NON-CONFERENCE	13-0	8-0	5-0	0-0

Team Box Score Extended

No.	Player				Total		3-Point		F-Throw		Rebounds																	
		GP-GS	MIN	AVG	FG-FGA	FG%	3FG-3FGA	3FG%	FT-FTA	FT%	OFF	DEF	TOT	AVG	PF	DQ	A	A/G	TO	TO/G	A/TO	BLK	BLK/G	STL	STL/G	PTS	AVG	
0	ELLIOTT, Gabby	13-13	424:56	32.7	81-194	.418	16-52	.308	36-50	.720	19	53	72	5.5	25	0	25	1.92	36	2.77	0.69	3	0.23	34	2.62	214	16.5	
21	BRACKENS, McKinna	12-12	371:09	30.9	67-135	.496	10-24	.417	29-49	.592	29	66	95	7.9	20	0	26	2.17	20	1.67	1.30	9	0.75	13	1.08	173	14.4	
14	CARRERA, Heloisa	13-13	323:58	24.9	55-105	.524	0-0	.000	11-13	.846	28	47	75	5.8	36	0	7	0.54	24	1.85	0.29	6	0.46	6	0.46	121	9.3	
11	WASHENITZ, Marley	13-13	388:14	29.9	42-113	.372	14-52	.269	20-29	.690	5	49	54	4.2	41	1	41	3.15	25	1.92	1.64	2	0.15	28	2.15	118	9.1	
13	POA, Last-Tear	11-10	256:58	23.4	20-54	.370	6-19	.316	23-29	.793	9	21	30	2.7	24	0	51	4.64	40	3.64	1.28	3	0.27	14	1.27	69	6.3	
4	LOVETT, Jyah	13-0	231:05	17.8	26-57	.456	6-18	.333	9-14	.643	3	19	22	1.7	18	0	11	0.85	18	1.38	0.61	0	0.00	18	1.38	67	5.2	
1	WILLIAMS, Amaya	13-3	220:31	17.0	25-58	.431	3-13	.231	8-13	.615	5	15	20	1.5	15	0	27	2.08	20	1.54	1.35	4	0.31	14	1.08	61	4.7	
7	FANTINI, Martina	13-0	135:19	10.4	15-28	.536	0-1	.000	1-6	.167	17	24	41	3.2	20	0	6	0.46	16	1.23	0.38	7	0.54	7	0.54	31	2.4	
24	DAVENPORT, Deborah	13-1	181:37	14.0	13-28	.464	1-2	.500	1-4	.250	20	23	43	3.3	17	0	5	0.38	13	1.00	0.38	6	0.46	10	0.77	28	2.2	
12	MOORE, Makayla	12-0	81:03	6.8	6-17	.353	3-11	.273	0-0	.000	4	5	9	0.8	6	0	2	0.17	2	0.17	1.00	1	0.08	6	0.50	15	1.3	
22	GRICE, Timya	5-0	10:09	2.0	1-2	.500	0-0	.000	4-8	.500	2	3	5	1.0	1	0	0	0.00	1	0.20	0.00	0	0.00	0	0.00	6	1.2	
Total		13	2625		351-791	.444	59-192	.307	142-215	.660	165	357	522	40.2	223	1	201	15.46	221	17.00	0.91	41	3.15	150	11.54	903	69.5	
Opponents		13	2625		255-723	.353	96-305	.315	103-161	.640	133	307	440	33.8	245	5	148	11.38	284	21.85	0.52	40	3.08	100	7.69	709	54.5	

Score by Periods

Team	1st	2nd	3rd	4th	OT	TOT
Arizona St.	193	254	213	238	5	903
Opponents	166	137	179	224	3	709



2025-26 Arizona St. Women's Basketball  
Points-rebounds-assists  
All games

Page 1/1  
as of Dec 17, 2025

Opponent	Date	Score		0	1	4	7	11	12	13	14	21	22	24
				ELLIOTT,GA	WILLIAMS,A	LOVETT,JYA	FANTINI,MA	WASHENITZ,	MOORE,MAKA	POA,LAST-T	CARRERA,HE	BRACKENS,M	GRICE,TIMY	DAVENPORT,
Coppin St.	11/03/2025	67-53	W	16-4-1	0-1-0	0-1-1	2-3-0	17-2-1	0-1-0	5-4-10	13-5-1	14-8-3	DNP	0-1-1
Eastern Wash.	11/08/2025	73-58	W	15-5-3	10-2-1	13-3-1	0-2-0	14-7-2	3-1-1	DNP	6-4-1	7-6-5	3-3-0	2-6-0
at San Diego	11/13/2025	79-47	W	24-7-4	6-1-11	3-5-1	6-5-1	19-4-6	3-2-0	DNP	6-6-1	10-3-1	0-0-0	2-1-0
at Santa Clara	11/16/2025	82-77	W	20-16-5	0-1-1	0-0-0	6-6-2	11-6-2	0-1-0	14-5-5	8-4-0	23-11-2	DNP	0-2-0
UNLV	11/22/2025	56-53	W	11-3-2	0-0-0	1-3-2	0-1-0	3-4-5	0-0-0	2-2-3	16-8-1	23-10-2	DNP	0-1-0
Utah Tech	11/25/2025	81-54	W	16-9-0	10-6-3	3-2-2	2-9-0	8-4-1	0-2-1	9-1-2	12-7-1	19-10-1	DNP	2-5-1
Little Rock	11/28/2025	59-41	W	5-4-0	18-4-3	4-0-0	4-1-2	9-3-3	0-1-0	0-4-3	6-5-0	11-6-2	2-2-0	0-3-1
Southeast Mo. St.	11/29/2025	85-56	W	14-3-2	1-1-2	4-1-0	2-3-0	9-5-4	9-1-0	12-5-10	21-10-0	10-7-3	1-0-0	2-7-0
McNeese	12/05/2025	57-47	W	19-4-1	0-1-0	5-1-0	0-0-0	2-4-4	0-0-0	9-5-3	6-11-0	14-15-2	DNP	2-4-0
San Francisco	12/06/2025	67-44	W	10-5-2	2-0-0	15-2-3	0-3-0	5-4-6	0-0-0	7-1-2	8-2-1	15-4-2	0-0-0	5-5-1
at Penn St.	12/09/2025	74-60	W	27-3-3	12-3-3	2-2-0	2-1-0	4-2-0	0-0-0	4-2-4	4-4-0	15-11-3	DNP	4-2-1
at Oregon St.	12/14/2025	55-53	Wot	7-5-0	2-0-3	5-0-0	0-1-0	5-5-3	0-0-0	7-1-4	12-7-0	12-4-0	DNP	5-2-0
at Gonzaga	12/16/2025	68-66	W	30-4-2	0-0-0	12-2-1	7-6-1	12-4-4	DNP	0-0-5	3-2-1	DNP	DNP	4-4-0





2025-26 Arizona St. Women's Basketball  
Team Game-by-Game  
All games

Page 1/1  
as of Dec 17, 2025

				Total		3-Pointers		Free throws		Rebounds											
Opponent	Date	Score		FG-FGA	PCT	3FG-3FGA	PCT	FT-FTA	PCT	OFF	DEF	TOT	AVG	PF	A	TO	BLK	STL	PTS	AVG	
Coppin St.	11/03/2025	67-53	W	26-63	.413	2-19	.105	13-18	.722	18	18	36	36.0	23	18	23	5	19	67	67.0	
Eastern Wash.	11/08/2025	73-58	W	28-62	.452	4-13	.308	13-26	.500	12	29	41	38.5	20	14	11	4	11	73	70.0	
at San Diego	11/13/2025	79-47	W	30-58	.517	14-22	.636	5-7	.714	9	27	36	37.7	17	25	14	5	11	79	73.0	
at Santa Clara	11/16/2025	82-77	W	30-65	.462	3-9	.333	19-25	.760	20	39	59	43.0	18	17	19	1	4	82	75.3	
UNLV	11/22/2025	56-53	W	24-57	.421	5-12	.417	3-4	.750	8	27	35	41.4	9	15	14	2	6	56	71.4	
Utah Tech	11/25/2025	81-54	W	33-80	.413	4-21	.190	11-16	.688	23	39	62	44.8	19	12	15	4	7	81	73.0	
Little Rock	11/28/2025	59-41	W	25-53	.472	2-10	.200	7-16	.438	9	26	35	43.4	14	14	16	3	13	59	71.0	
Southeast Mo. St.	11/29/2025	85-56	W	37-79	.468	3-18	.167	8-13	.615	18	28	46	43.8	13	21	10	4	13	85	72.8	
McNeese	12/05/2025	57-47	W	19-45	.422	2-13	.154	17-22	.773	11	35	46	44.0	18	10	20	6	3	57	71.0	
San Francisco	12/06/2025	67-44	W	27-52	.519	5-13	.385	8-14	.571	8	25	33	42.9	15	17	24	1	18	67	70.6	
at Penn St.	12/09/2025	74-60	W	25-56	.446	4-12	.333	20-27	.741	9	26	35	42.2	20	14	30	3	18	74	70.9	
at Oregon St.	12/14/2025	55-53	Wot	21-59	.356	4-13	.308	9-14	.643	6	24	30	41.2	17	10	11	1	13	55	69.6	
at Gonzaga	12/16/2025	68-66	W	26-62	.419	7-17	.412	9-13	.692	14	14	28	40.2	20	14	14	2	14	68	69.5	
Total		903		351-791	.444	59-192	.307	142-215	.660	165	357	522	40.2	223	201	221	41	150	903	69.5	
Opponents		709		255-723	.353	96-305	.315	103-161	.640	133	307	440	33.8	245	148	284	40	100	709	54.5	

Arizona St. Averages

Games Played	Points/game	FG Pct	3FG Pct	FT Pct	Rebounds/game	Assists/game	Turnovers/game	Assist/Turnover ratio	Steals/game	Blocks/game
13	69.5	44.4	30.7	66.0	40.2	15.5	17.0	0.9	11.5	3.2



2025-26 Arizona St. Women's Basketball  
Opponents Game-by-Game  
All games

Page 1/1  
as of Dec 17, 2025

				Total		3-Pointers		Free throws		Rebounds											
Opponent	Date	Score		FG-FGA	PCT	3FG-3FGA	PCT	FT-FTA	PCT	OFF	DEF	TOT	AVG	PF	A	TO	BLK	STL	PTS	AVG	
Coppin St.	11/03/2025	67-53	W	18-40	.450	7-14	.500	10-22	.455	9	22	31	31.0	19	13	33	2	8	53	53.0	
Eastern Wash.	11/08/2025	73-58	W	21-57	.368	8-23	.348	8-17	.471	12	29	41	36.0	23	11	19	1	5	58	55.5	
at San Diego	11/13/2025	79-47	W	16-55	.291	6-17	.353	9-18	.500	16	20	36	36.0	15	8	20	4	6	47	52.7	
at Santa Clara	11/16/2025	82-77	W	28-73	.384	14-44	.318	7-11	.636	10	19	29	34.3	21	18	11	7	7	77	58.8	
UNLV	11/22/2025	56-53	W	21-52	.404	9-26	.346	2-4	.500	5	25	30	33.4	8	11	16	5	7	53	57.6	
Utah Tech	11/25/2025	81-54	W	20-67	.299	5-28	.179	9-12	.750	9	27	36	33.8	17	11	13	3	5	54	57.0	
Little Rock	11/28/2025	59-41	W	13-48	.271	5-17	.294	10-16	.625	11	24	35	34.0	20	9	23	2	9	41	54.7	
Southeast Mo. St.	11/29/2025	85-56	W	19-55	.345	12-27	.444	6-7	.857	9	25	34	34.0	19	13	26	6	3	56	54.9	
McNeese	12/05/2025	57-47	W	17-62	.274	6-23	.261	7-7	1.000	10	16	26	33.1	26	9	9	1	11	47	54.0	
San Francisco	12/06/2025	67-44	W	16-48	.333	4-22	.182	8-9	.889	8	19	27	32.5	19	11	31	1	10	44	53.0	
at Penn St.	12/09/2025	74-60	W	22-62	.355	4-20	.200	12-16	.750	15	24	39	33.1	28	12	36	5	17	60	53.6	
at Oregon St.	12/14/2025	55-53	Wot	22-58	.379	6-22	.273	3-5	.600	9	33	42	33.8	14	9	21	3	5	53	53.6	
at Gonzaga	12/16/2025	68-66	W	22-46	.478	10-22	.455	12-17	.706	10	24	34	33.8	16	13	26	0	7	66	54.5	
Total		709		255-723	.353	96-305	.315	103-161	.640	133	307	440	33.8	245	148	284	40	100	709	54.5	
Arizona St.		903		351-791	.444	59-192	.307	142-215	.660	165	357	522	40.2	223	201	221	41	150	903	69.5	

Opponents Averages

Games Played	Points/game	FG Pct	3FG Pct	FT Pct	Rebounds/game	Assists/game	Turnovers/game	Assist/Turnover ratio	Steals/game	Blocks/game
13	54.5	35.3	31.5	64.0	33.8	11.4	21.8	0.5	7.7	3.1



2025-26 Arizona St. Women's Basketball  
Category Leaders  
All games

Page 1/3  
as of Dec 17, 2025

### Points

##	Player	G	Pts	Pts/G
0	Elliott, Gabby	13	214	16.5
21	Brackens, McKinna	12	173	14.4
14	Carrera, Heloisa	13	121	9.3
11	Washenitz, Marley	13	118	9.1
13	Poa, Last-Tear	11	69	6.3
4	LoVett, Jyah	13	67	5.2
1	Williams, Amaya	13	61	4.7
7	Fantini, Martina	13	31	2.4
24	Davenport, Deborah	13	28	2.2
12	Moore, Makayla	12	15	1.3
22	Grice, Timya	5	6	1.2

### Scoring Average

##	Player	G	Pts	Pts/G
0	Elliott, Gabby	13	214	16.5
21	Brackens, McKinna	12	173	14.4
14	Carrera, Heloisa	13	121	9.3
11	Washenitz, Marley	13	118	9.1
13	Poa, Last-Tear	11	69	6.3
4	LoVett, Jyah	13	67	5.2
1	Williams, Amaya	13	61	4.7
7	Fantini, Martina	13	31	2.4
24	Davenport, Deborah	13	28	2.2
12	Moore, Makayla	12	15	1.3
22	Grice, Timya	5	6	1.2

### Field Goal Percentage

##	Player	FG	Att	Pct
7	Fantini, Martina	15	28	.536
14	Carrera, Heloisa	55	105	.524
22	Grice, Timya	1	2	.500
21	Brackens, McKinna	67	135	.496
24	Davenport, Deborah	13	28	.464
4	LoVett, Jyah	26	57	.456
1	Williams, Amaya	25	58	.431
0	Elliott, Gabby	81	194	.418
11	Washenitz, Marley	42	113	.372
13	Poa, Last-Tear	20	54	.370
12	Moore, Makayla	6	17	.353

### Field Goal Attempts

##	Player	G	Att	Att/G
0	Elliott, Gabby	13	194	14.9
21	Brackens, McKinna	12	135	11.3
11	Washenitz, Marley	13	113	8.7
14	Carrera, Heloisa	13	105	8.1
1	Williams, Amaya	13	58	4.5

### Field Goals Made

##	Player	G	Made	Made/G
0	Elliott, Gabby	13	81	6.2
21	Brackens, McKinna	12	67	5.6
14	Carrera, Heloisa	13	55	4.2
11	Washenitz, Marley	13	42	3.2
4	LoVett, Jyah	13	26	2.0

### 3-Point FG Percentage

##	Player	3FG	Att	Pct
24	Davenport, Deborah	1	2	.500
21	Brackens, McKinna	10	24	.417
4	LoVett, Jyah	6	18	.333
13	Poa, Last-Tear	6	19	.316
0	Elliott, Gabby	16	52	.308
12	Moore, Makayla	3	11	.273
11	Washenitz, Marley	14	52	.269
1	Williams, Amaya	3	13	.231

### 3-Point FG Attempts

##	Player	G	Att	Att/G
0	Elliott, Gabby	13	52	4.0
11	Washenitz, Marley	13	52	4.0
21	Brackens, McKinna	12	24	2.0
13	Poa, Last-Tear	11	19	1.7
4	LoVett, Jyah	13	18	1.4

### 3-Point FG Made

##	Player	G	Made	Made/G
0	Elliott, Gabby	13	16	1.2
11	Washenitz, Marley	13	14	1.1
21	Brackens, McKinna	12	10	0.8
13	Poa, Last-Tear	11	6	0.5
4	LoVett, Jyah	13	6	0.5





2025-26 Arizona St. Women's Basketball  
Category Leaders  
All games

Page 2/3  
as of Dec 17, 2025

### Free Throw Percentage

##	Player	Made	Att	Pct
14	Carrera, Heloisa	11	13	.846
13	Poa, Last-Tear	23	29	.793
0	Elliott, Gabby	36	50	.720
11	Washenitz, Marley	20	29	.690
4	LoVett, Jyah	9	14	.643
1	Williams, Amaya	8	13	.615
21	Brackens, McKinna	29	49	.592
22	Grice, Timya	4	8	.500
24	Davenport, Deborah	1	4	.250
7	Fantini, Martina	1	6	.167

### Free Throw Attempts

##	Player	G	Att	Att/G
0	Elliott, Gabby	13	50	3.8
21	Brackens, McKinna	12	49	4.1
11	Washenitz, Marley	13	29	2.2
13	Poa, Last-Tear	11	29	2.6
4	LoVett, Jyah	13	14	1.1

### Free Throws Made

##	Player	G	Made	Made/G
0	Elliott, Gabby	13	36	2.8
21	Brackens, McKinna	12	29	2.4
13	Poa, Last-Tear	11	23	2.1
11	Washenitz, Marley	13	20	1.5
14	Carrera, Heloisa	13	11	0.8

### Rebounds

##	Player	G	Reb	Reb/G
21	Brackens, McKinna	12	95	7.9
14	Carrera, Heloisa	13	75	5.8
0	Elliott, Gabby	13	72	5.5
11	Washenitz, Marley	13	54	4.2
24	Davenport, Deborah	13	43	3.3

### Assists

##	Player	G	Ast	Ast/G
13	Poa, Last-Tear	11	51	4.6
11	Washenitz, Marley	13	41	3.2
1	Williams, Amaya	13	27	2.1
21	Brackens, McKinna	12	26	2.2
0	Elliott, Gabby	13	25	1.9

### Rebounds Average

##	Player	G	Reb	Reb/G
21	Brackens, McKinna	12	95	7.9
14	Carrera, Heloisa	13	75	5.8
0	Elliott, Gabby	13	72	5.5
11	Washenitz, Marley	13	54	4.2
24	Davenport, Deborah	13	43	3.3

### Steals

##	Player	G	Stl	Stl/G
0	Elliott, Gabby	13	34	2.6
11	Washenitz, Marley	13	28	2.2
4	LoVett, Jyah	13	18	1.4
13	Poa, Last-Tear	11	14	1.3
1	Williams, Amaya	13	14	1.1

### Offensive Rebounds

##	Player	G	OReb	OReb/G
21	Brackens, McKinna	12	29	2.4
14	Carrera, Heloisa	13	28	2.2
24	Davenport, Deborah	13	20	1.5
0	Elliott, Gabby	13	19	1.5
7	Fantini, Martina	13	17	1.3

### Blocked Shots

##	Player	G	Blk	Blk/G
21	Brackens, McKinna	12	9	0.8
7	Fantini, Martina	13	7	0.5
14	Carrera, Heloisa	13	6	0.5
24	Davenport, Deborah	13	6	0.5
1	Williams, Amaya	13	4	0.3

### Defensive Rebounds

##	Player	G	DReb	DReb/G
21	Brackens, McKinna	12	66	5.5
0	Elliott, Gabby	13	53	4.1
11	Washenitz, Marley	13	49	3.8
14	Carrera, Heloisa	13	47	3.6
7	Fantini, Martina	13	24	1.8

### Minutes

##	Player	G	Min	Min/G
0	Elliott, Gabby	13	425	32:41
11	Washenitz, Marley	13	388	29:52
21	Brackens, McKinna	12	371	30:56
14	Carrera, Heloisa	13	324	24:55
13	Poa, Last-Tear	11	257	23:22



2025-26 Arizona St. Women's Basketball  
Team High/Low Analysis  
All games

Page 1/4  
as of Dec 17, 2025

Arizona St. - Game Highs

POINTS	85		Southeast Mo. St. (11/29/2025)
	82		at Santa Clara (11/16/2025)
	81		Utah Tech (11/25/2025)
	79		at San Diego (11/13/2025)
	74		at Penn St. (12/09/2025)
FIELD GOALS MADE	37		Southeast Mo. St. (11/29/2025)
	33		Utah Tech (11/25/2025)
FIELD GOAL ATTEMPTS	80		Utah Tech (11/25/2025)
	79		Southeast Mo. St. (11/29/2025)
FIELD GOAL PERCENTAGE	.519	(27-52)	San Francisco (12/06/2025)
	.517	(30-58)	at San Diego (11/13/2025)
3 PT FG MADE	14		at San Diego (11/13/2025)
	7		at Gonzaga (12/16/2025)
3 PT FG ATTEMPTS	22		at San Diego (11/13/2025)
	21		Utah Tech (11/25/2025)
3 PT FG PERCENTAGE	.636	(14-22)	at San Diego (11/13/2025)
	.417	(5-12)	UNLV (11/22/2025)
FREE THROWS MADE	20		at Penn St. (12/09/2025)
	19		at Santa Clara (11/16/2025)
FREE THROW ATTEMPTS	27		at Penn St. (12/09/2025)
	26		Eastern Wash. (11/08/2025)
FREE THROW PERCENTAGE	.773	(17-22)	McNeese (12/05/2025)
	.760	(19-25)	at Santa Clara (11/16/2025)
REBOUNDS	62		Utah Tech (11/25/2025)
	59		at Santa Clara (11/16/2025)
ASSISTS	25		at San Diego (11/13/2025)
	21		Southeast Mo. St. (11/29/2025)
STEALS	19		Coppin St. (11/03/2025)
	18		at Penn St. (12/09/2025)
	18		San Francisco (12/06/2025)
BLOCKED SHOTS	6		McNeese (12/05/2025)
	5		at San Diego (11/13/2025)
	5		Coppin St. (11/03/2025)
TURNOVERS	30		at Penn St. (12/09/2025)
	24		San Francisco (12/06/2025)
FOULS	23		Coppin St. (11/03/2025)
	20		at Gonzaga (12/16/2025)
	20		at Penn St. (12/09/2025)
	20		Eastern Wash. (11/08/2025)



2025-26 Arizona St. Women's Basketball  
Team High/Low Analysis  
All games

Page 2/4  
as of Dec 17, 2025

Opponent - Game Highs

POINTS	77		at Santa Clara (11/16/2025)
	66		at Gonzaga (12/16/2025)
	60		at Penn St. (12/09/2025)
	58		Eastern Wash. (11/08/2025)
	56		Southeast Mo. St. (11/29/2025)
FIELD GOALS MADE	28		at Santa Clara (11/16/2025)
	22		at Gonzaga (12/16/2025)
	22		at Oregon St. (12/14/2025)
	22		at Penn St. (12/09/2025)
FIELD GOAL ATTEMPTS	73		at Santa Clara (11/16/2025)
	67		Utah Tech (11/25/2025)
FIELD GOAL PERCENTAGE	.478	(22-46)	at Gonzaga (12/16/2025)
	.450	(18-40)	Coppin St. (11/03/2025)
3 PT FG MADE	14		at Santa Clara (11/16/2025)
	12		Southeast Mo. St. (11/29/2025)
3 PT FG ATTEMPTS	44		at Santa Clara (11/16/2025)
	28		Utah Tech (11/25/2025)
3 PT FG PERCENTAGE	.500	(7-14)	Coppin St. (11/03/2025)
	.455	(10-22)	at Gonzaga (12/16/2025)
FREE THROWS MADE	12		at Gonzaga (12/16/2025)
	12		at Penn St. (12/09/2025)
FREE THROW ATTEMPTS	22		Coppin St. (11/03/2025)
	18		at San Diego (11/13/2025)
FREE THROW PERCENTAGE	1.000	(7-7)	McNeese (12/05/2025)
	.889	(8-9)	San Francisco (12/06/2025)
REBOUNDS	42		at Oregon St. (12/14/2025)
	41		Eastern Wash. (11/08/2025)
ASSISTS	18		at Santa Clara (11/16/2025)
	13		at Gonzaga (12/16/2025)
	13		Southeast Mo. St. (11/29/2025)
	13		Coppin St. (11/03/2025)
STEALS	17		at Penn St. (12/09/2025)
	11		McNeese (12/05/2025)
BLOCKED SHOTS	7		at Santa Clara (11/16/2025)
	6		Southeast Mo. St. (11/29/2025)
TURNOVERS	36		at Penn St. (12/09/2025)
	33		Coppin St. (11/03/2025)
FOULS	28		at Penn St. (12/09/2025)
	26		McNeese (12/05/2025)





2025-26 Arizona St. Women's Basketball  
Team High/Low Analysis  
All games

Page 3/4  
as of Dec 17, 2025

Arizona St. - Game Lows

POINTS	55	at Oregon St. (12/14/2025)
	56	UNLV (11/22/2025)
	57	McNeese (12/05/2025)
	59	Little Rock (11/28/2025)
	67	San Francisco (12/06/2025)
	67	Coppin St. (11/03/2025)
FIELD GOALS MADE	19	McNeese (12/05/2025)
	21	at Oregon St. (12/14/2025)
FIELD GOAL ATTEMPTS	45	McNeese (12/05/2025)
	52	San Francisco (12/06/2025)
FIELD GOAL PERCENTAGE	.356 (21-59)	at Oregon St. (12/14/2025)
	.413 (33-80)	Utah Tech (11/25/2025)
	.413 (26-63)	Coppin St. (11/03/2025)
3 PT FG MADE	2	McNeese (12/05/2025)
	2	Little Rock (11/28/2025)
	2	Coppin St. (11/03/2025)
3 PT FG ATTEMPTS	9	at Santa Clara (11/16/2025)
	10	Little Rock (11/28/2025)
3 PT FG PERCENTAGE	.105 (2-19)	Coppin St. (11/03/2025)
	.154 (2-13)	McNeese (12/05/2025)
FREE THROWS MADE	3	UNLV (11/22/2025)
	5	at San Diego (11/13/2025)
FREE THROW ATTEMPTS	4	UNLV (11/22/2025)
	7	at San Diego (11/13/2025)
FREE THROW PERCENTAGE	.438 (7-16)	Little Rock (11/28/2025)
	.500 (13-26)	Eastern Wash. (11/08/2025)
REBOUNDS	28	at Gonzaga (12/16/2025)
	30	at Oregon St. (12/14/2025)
ASSISTS	10	at Oregon St. (12/14/2025)
	10	McNeese (12/05/2025)
STEALS	3	McNeese (12/05/2025)
	4	at Santa Clara (11/16/2025)
BLOCKED SHOTS	1	at Oregon St. (12/14/2025)
	1	San Francisco (12/06/2025)
	1	at Santa Clara (11/16/2025)
TURNOVERS	10	Southeast Mo. St. (11/29/2025)
	11	at Oregon St. (12/14/2025)
	11	Eastern Wash. (11/08/2025)
FOULS	9	UNLV (11/22/2025)
	13	Southeast Mo. St. (11/29/2025)



2025-26 Arizona St. Women's Basketball  
Team High/Low Analysis  
All games

Page 4/4  
as of Dec 17, 2025

Opponent - Game Lows

POINTS	41		Little Rock (11/28/2025)
	44		San Francisco (12/06/2025)
	47		McNeese (12/05/2025)
	47		at San Diego (11/13/2025)
	53		at Oregon St. (12/14/2025)
	53		UNLV (11/22/2025)
	53		Coppin St. (11/03/2025)
FIELD GOALS MADE	13		Little Rock (11/28/2025)
	16		San Francisco (12/06/2025)
	16		at San Diego (11/13/2025)
FIELD GOAL ATTEMPTS	40		Coppin St. (11/03/2025)
	46		at Gonzaga (12/16/2025)
FIELD GOAL PERCENTAGE	.271	(13-48)	Little Rock (11/28/2025)
	.274	(17-62)	McNeese (12/05/2025)
3 PT FG MADE	4		at Penn St. (12/09/2025)
	4		San Francisco (12/06/2025)
3 PT FG ATTEMPTS	14		Coppin St. (11/03/2025)
	17		Little Rock (11/28/2025)
	17		at San Diego (11/13/2025)
3 PT FG PERCENTAGE	.179	(5-28)	Utah Tech (11/25/2025)
	.182	(4-22)	San Francisco (12/06/2025)
FREE THROWS MADE	2		UNLV (11/22/2025)
	3		at Oregon St. (12/14/2025)
FREE THROW ATTEMPTS	4		UNLV (11/22/2025)
	5		at Oregon St. (12/14/2025)
FREE THROW PERCENTAGE	.455	(10-22)	Coppin St. (11/03/2025)
	.471	(8-17)	Eastern Wash. (11/08/2025)
REBOUNDS	26		McNeese (12/05/2025)
	27		San Francisco (12/06/2025)
ASSISTS	8		at San Diego (11/13/2025)
	9		at Oregon St. (12/14/2025)
	9		McNeese (12/05/2025)
	9		Little Rock (11/28/2025)
STEALS	3		Southeast Mo. St. (11/29/2025)
	5		at Oregon St. (12/14/2025)
	5		Utah Tech (11/25/2025)
	5		Eastern Wash. (11/08/2025)
BLOCKED SHOTS	0		at Gonzaga (12/16/2025)
	1		San Francisco (12/06/2025)
	1		McNeese (12/05/2025)
	1		Eastern Wash. (11/08/2025)
TURNOVERS	9		McNeese (12/05/2025)
	11		at Santa Clara (11/16/2025)
FOULS	8		UNLV (11/22/2025)
	14		at Oregon St. (12/14/2025)



**2025-26 Arizona St. Women's Basketball**  
**Player Highs Analysis**  
**All games**

Page 1/3  
as of Dec 17, 2025

**Arizona St. - Individual Game Highs**

<b>POINTS</b>	30		Gabby Elliott at Gonzaga (12/16/2025)
	27		Gabby Elliott at Penn St. (12/09/2025)
	24		Gabby Elliott at San Diego (11/13/2025)
	23		McKinna Brackens vs UNLV (11/22/2025)
	23		McKinna Brackens at Santa Clara (11/16/2025)
<b>FIELD GOALS MADE</b>	10		Gabby Elliott at Gonzaga (12/16/2025)
	10		Gabby Elliott at Penn St. (12/09/2025)
	10		McKinna Brackens vs UNLV (11/22/2025)
<b>FIELD GOAL ATTEMPTS</b>	22		Gabby Elliott at Gonzaga (12/16/2025)
	20		Gabby Elliott at Penn St. (12/09/2025)
<b>FIELD GOAL PERCENTAGE (min 5 made)</b>	.800	(8-10)	Amaya Williams vs Little Rock (11/28/2025)
	.778	(7-9)	Jyah LoVett vs San Francisco (12/06/2025)
<b>3 PT FG MADE</b>	6		Gabby Elliott at San Diego (11/13/2025)
	4		Marley Washenitz at San Diego (11/13/2025)
<b>3 PT FG ATTEMPTS</b>	8		Gabby Elliott at San Diego (11/13/2025)
	8		Marley Washenitz vs Coppin St. (11/03/2025)
<b>3 PT FG PERCENTAGE (min 2 made)</b>	.750	(6-8)	Gabby Elliott at San Diego (11/13/2025)
	.667	(2-3)	Last-Tear Poa vs San Francisco (12/06/2025)
	.667	(2-3)	Amaya Williams at San Diego (11/13/2025)
<b>FREE THROWS MADE</b>	9		McKinna Brackens at Santa Clara (11/16/2025)
	7		Gabby Elliott at Gonzaga (12/16/2025)
	7		Last-Tear Poa vs McNeese (12/05/2025)
	7		Last-Tear Poa at Santa Clara (11/16/2025)
<b>FREE THROW ATTEMPTS</b>	12		McKinna Brackens at Santa Clara (11/16/2025)
	10		Gabby Elliott at Gonzaga (12/16/2025)
<b>FREE THROW PERCENTAGE (min 3 made)</b>	1.000	(7-7)	Last-Tear Poa at Santa Clara (11/16/2025)
	1.000	(5-5)	Marley Washenitz vs Coppin St. (11/03/2025)
	1.000	(4-4)	McKinna Brackens at Penn St. (12/09/2025)
	1.000	(4-4)	Heloisa Carrera at Penn St. (12/09/2025)
	1.000	(4-4)	Gabby Elliott vs Coppin St. (11/03/2025)
	1.000	(3-3)	Heloisa Carrera vs Southeast Mo. St. (11/29/2025)
	1.000	(3-3)	Last-Tear Poa vs Utah Tech (11/25/2025)
<b>REBOUNDS</b>	16		Gabby Elliott at Santa Clara (11/16/2025)
	15		McKinna Brackens vs McNeese (12/05/2025)
<b>ASSISTS</b>	11		Amaya Williams at San Diego (11/13/2025)
	10		Last-Tear Poa vs Southeast Mo. St. (11/29/2025)
	10		Last-Tear Poa vs Coppin St. (11/03/2025)
<b>STEALS</b>	8		Gabby Elliott vs San Francisco (12/06/2025)
	7		Gabby Elliott vs Coppin St. (11/03/2025)
<b>BLOCKED SHOTS</b>	2		Amaya Williams at Penn St. (12/09/2025)
	2		Last-Tear Poa vs McNeese (12/05/2025)
	2		Deborah Davenport vs McNeese (12/05/2025)
	2		Heloisa Carrera vs Southeast Mo. St. (11/29/2025)
	2		Deborah Davenport vs Little Rock (11/28/2025)
	2		McKinna Brackens vs Utah Tech (11/25/2025)
	2		Martina Fantini at San Diego (11/13/2025)
	2		Gabby Elliott vs Eastern Wash. (11/08/2025)
	2		Martina Fantini vs Coppin St. (11/03/2025)
<b>TURNOVERS</b>	7		Gabby Elliott at Penn St. (12/09/2025)
	6		Marley Washenitz vs San Francisco (12/06/2025)
	6		Last-Tear Poa vs McNeese (12/05/2025)





**2025-26 Arizona St. Women's Basketball**  
**Player Highs Analysis**  
**All games**

Page 3/3  
as of Dec 17, 2025

**Opponent - Individual Game Highs**

<b>POINTS</b>	24		Lauren Whittaker at Gonzaga (12/16/2025)
	21		Carmen Taylor vs Southeast Mo. St. (11/29/2025)
	21		Jordan Holman vs Little Rock (11/28/2025)
	20		Maia Jones at Santa Clara (11/16/2025)
	18		Jenna Villa at Oregon St. (12/14/2025)
	18		Ashley Hawkins at Santa Clara (11/16/2025)
<b>FIELD GOALS MADE</b>	8		Lauren Whittaker at Gonzaga (12/16/2025)
	8		Sophie Glancey at Santa Clara (11/16/2025)
<b>FIELD GOAL ATTEMPTS</b>	19		Kiyomi McMiller at Penn St. (12/09/2025)
	17		Jenna Villa at Oregon St. (12/14/2025)
	17		Jordan Holman vs Little Rock (11/28/2025)
<b>FIELD GOAL PERCENTAGE (min 5 made)</b>	.833	(5-6)	Shayla Smith at Penn St. (12/09/2025)
	.667	(6-9)	Gracie Merkle at Penn St. (12/09/2025)
<b>3 PT FG MADE</b>	7		Carmen Taylor vs Southeast Mo. St. (11/29/2025)
	5		Maia Jones at Santa Clara (11/16/2025)
<b>3 PT FG ATTEMPTS</b>	13		Carmen Taylor vs Southeast Mo. St. (11/29/2025)
	13		Maia Jones at Santa Clara (11/16/2025)
<b>3 PT FG PERCENTAGE (min 2 made)</b>	1.000	(2-2)	Shayla Smith at Penn St. (12/09/2025)
	.667	(4-6)	Mariah Elohim vs UNLV (11/22/2025)
	.667	(2-3)	Zeryhia Aokuso at Gonzaga (12/16/2025)
	.667	(2-3)	Ally Schimel at Oregon St. (12/14/2025)
	.667	(2-3)	Jasmyn Lott vs UNLV (11/22/2025)
	.667	(2-3)	Erin Henry vs Coppin St. (11/03/2025)
	.667	(2-3)	Skylar Barnes vs Coppin St. (11/03/2025)
<b>FREE THROWS MADE</b>	7		Candy Edokpaigbe vs San Francisco (12/06/2025)
	6		Shaelyn Steele at Penn St. (12/09/2025)
<b>FREE THROW ATTEMPTS</b>	7		Gracie Merkle at Penn St. (12/09/2025)
	7		Shaelyn Steele at Penn St. (12/09/2025)
	7		Candy Edokpaigbe vs San Francisco (12/06/2025)
<b>FREE THROW PERCENTAGE (min 3 made)</b>	1.000	(7-7)	Candy Edokpaigbe vs San Francisco (12/06/2025)
	1.000	(5-5)	Lauren Whittaker at Gonzaga (12/16/2025)
	1.000	(4-4)	Allie Turner at Gonzaga (12/16/2025)
	1.000	(4-4)	Jordan Holman vs Little Rock (11/28/2025)
	1.000	(4-4)	Olivia Owens at San Diego (11/13/2025)
	1.000	(3-3)	Jenna Villa at Oregon St. (12/14/2025)
	1.000	(3-3)	Dakota Howard vs McNeese (12/05/2025)
	1.000	(3-3)	Maia Jones at Santa Clara (11/16/2025)
<b>REBOUNDS</b>	12		Nene Sow at Oregon St. (12/14/2025)
	11		Meadow Roland vs UNLV (11/22/2025)
<b>ASSISTS</b>	8		Chardonnay Hartley vs Utah Tech (11/25/2025)
	6		Ashley Hawkins at Santa Clara (11/16/2025)
<b>STEALS</b>	5		Shaelyn Steele at Penn St. (12/09/2025)
	5		Candy Edokpaigbe vs San Francisco (12/06/2025)
<b>BLOCKED SHOTS</b>	5		Meadow Roland vs UNLV (11/22/2025)
	4		Ava Schmidt at Santa Clara (11/16/2025)
<b>TURNOVERS</b>	13		Khila Morris vs Coppin St. (11/03/2025)
	12		Paris McBride vs Coppin St. (11/03/2025)
<b>FOULS</b>	5		Shaelyn Steele at Penn St. (12/09/2025)
	5		Shayla Smith at Penn St. (12/09/2025)
	5		Lexi Alexander vs McNeese (12/05/2025)
	5		Raissa Nsabua vs Southeast Mo. St. (11/29/2025)
	5		Aniya Hooker at Santa Clara (11/16/2025)



2025-26 Arizona St. Women's Basketball  
Individual Game-by-Game  
All games

Page 1/11  
as of Dec 17, 2025

#0 ELLIOTT, Gabby

Opponent	Date	GS	MIN	Total		3-Pointers		Free throws		Rebounds											
				FG-FGA	PCT	3FG-3FGA	PCT	FT-FTA	PCT	OFF	DEF	TOT	AVG	PF	A	TO	BLK	STL	PTS	AVG	
Coppin St.	11/03/2025	*	35:42	6-14	.429	0-3	.000	4-4	1.000	3	1	4	4.0	3	1	5	0	7	16	16.0	
Eastern Wash.	11/08/2025	*	30:34	7-11	.636	1-2	.500	0-0	.000	1	4	5	4.5	2	3	2	2	1	15	15.5	
at San Diego	11/13/2025	*	30:34	8-14	.571	6-8	.750	2-3	.667	1	6	7	5.3	2	4	4	0	0	24	18.3	
at Santa Clara	11/16/2025	*	37:32	8-17	.471	1-4	.250	3-6	.500	3	13	16	8.0	1	5	4	0	1	20	18.8	
UNLV	11/22/2025	*	40:00	4-14	.286	1-4	.250	2-2	1.000	0	3	3	7.0	0	2	3	0	1	11	17.2	
Utah Tech	11/25/2025	*	25:08	5-17	.294	0-4	.000	6-7	.857	4	5	9	7.3	1	0	1	0	0	16	17.0	
Little Rock	11/28/2025	*	13:51	2-5	.400	0-1	.000	1-2	.500	0	4	4	6.9	4	0	1	0	1	5	15.3	
Southeast Mo. St.	11/29/2025	*	28:23	7-15	.467	0-4	.000	0-0	.000	0	3	3	6.4	2	2	1	0	2	14	15.1	
McNeese	12/05/2025	*	38:08	8-15	.533	1-4	.250	2-3	.667	2	2	4	6.1	3	1	2	0	1	19	15.6	
San Francisco	12/06/2025	*	31:23	4-14	.286	1-4	.250	1-2	.500	1	4	5	6.0	2	2	3	1	8	10	15.0	
at Penn St.	12/09/2025	*	36:53	10-20	.500	2-5	.400	5-7	.714	0	3	3	5.7	0	3	7	0	4	27	16.1	
at Oregon St.	12/14/2025	*	37:53	2-16	.125	0-3	.000	3-4	.750	1	4	5	5.7	2	0	0	0	4	7	15.3	
at Gonzaga	12/16/2025	*	38:55	10-22	.455	3-6	.500	7-10	.700	3	1	4	5.5	3	2	3	0	4	30	16.5	
Totals		13	424:56	81-194	.418	16-52	.308	36-50	.720	19	53	72	5.5	25	25	36	3	34	214	16.5	

Player Averages

Games Played	Minutes/game	Points/game	FG Pct	3FG Pct	FT Pct	Rebounds/game	Assists/game	Turnovers/game	Assist/Turnover ratio	Steals/game	Blocks/game
13	32.7	16.5	41.8	30.8	72.0	5.5	1.9	2.8	0.7	2.6	0.2



2025-26 Arizona St. Women's Basketball  
Individual Game-by-Game  
All games

Page 2/11  
as of Dec 17, 2025

#1 WILLIAMS, Amaya

Opponent	Date	GS	MIN	Total		3-Pointers		Free throws		Rebounds				PF	A	TO	BLK	STL	PTS	AVG
				FG-FGA	PCT	3FG-3FGA	PCT	FT-FTA	PCT	OFF	DEF	TOT	AVG							
Coppin St.	11/03/2025		09:47	0-2	.000	0-1	.000	0-0	.000	1	0	1	1.0	1	0	1	0	1	0	0.0
Eastern Wash.	11/08/2025	*	23:00	4-8	.500	0-2	.000	2-4	.500	1	1	2	1.5	1	1	2	0	1	10	5.0
at San Diego	11/13/2025	*	34:18	2-7	.286	2-3	.667	0-0	.000	1	0	1	1.3	0	11	3	1	4	6	5.3
at Santa Clara	11/16/2025	*	09:28	0-0	.000	0-0	.000	0-0	.000	0	1	1	1.3	2	1	1	0	0	0	4.0
UNLV	11/22/2025		00:30	0-0	.000	0-0	.000	0-0	.000	0	0	0	1.0	1	0	1	0	0	0	3.2
Utah Tech	11/25/2025		24:39	5-9	.556	0-1	.000	0-0	.000	2	4	6	1.8	0	3	2	0	1	10	4.3
Little Rock	11/28/2025		30:43	8-10	.800	1-1	1.000	1-1	1.000	0	4	4	2.1	1	3	4	0	2	18	6.3
Southeast Mo. St.	11/29/2025		19:51	0-5	.000	0-2	.000	1-2	.500	0	1	1	2.0	2	2	0	1	1	1	5.6
McNeese	12/05/2025		08:50	0-0	.000	0-0	.000	0-0	.000	0	1	1	1.9	2	0	1	0	0	0	5.0
San Francisco	12/06/2025		07:33	1-3	.333	0-1	.000	0-0	.000	0	0	0	1.7	1	0	0	0	0	2	4.7
at Penn St.	12/09/2025		32:51	4-9	.444	0-1	.000	4-6	.667	0	3	3	1.8	2	3	4	2	4	12	5.4
at Oregon St.	12/14/2025		11:07	1-3	.333	0-1	.000	0-0	.000	0	0	0	1.7	1	3	1	0	0	2	5.1
at Gonzaga	12/16/2025		07:54	0-2	.000	0-0	.000	0-0	.000	0	0	0	1.5	1	0	0	0	0	0	4.7
Totals		3	220:31	25-58	.431	3-13	.231	8-13	.615	5	15	20	1.5	15	27	20	4	14	61	4.7

Player Averages

Games Played	Minutes/ game	Points/ game	FG Pct	3FG Pct	FT Pct	Rebounds/ game	Assists/ game	Turnovers/ game	Assist/Turnover ratio	Steals/ game	Blocks/ game
13	17.0	4.7	43.1	23.1	61.5	1.5	2.1	1.5	1.4	1.1	0.3



2025-26 Arizona St. Women's Basketball  
Individual Game-by-Game  
All games

Page 3/11  
as of Dec 17, 2025

#4 LOVETT, Jyah

Opponent	Date	GS	MIN	Total		3-Pointers		Free throws		Rebounds				PF	A	TO	BLK	STL	PTS	AVG
				FG-FGA	PCT	3FG-3FGA	PCT	FT-FTA	PCT	OFF	DEF	TOT	AVG							
Coppin St.	11/03/2025		14:12	0-2	.000	0-1	.000	0-0	.000	0	1	1	1.0	3	1	1	0	3	0	0.0
Eastern Wash.	11/08/2025		20:37	5-7	.714	0-1	.000	3-6	.500	0	3	3	2.0	3	1	2	0	2	13	6.5
at San Diego	11/13/2025		23:45	1-5	.200	1-3	.333	0-0	.000	1	4	5	3.0	1	1	1	0	0	3	5.3
at Santa Clara	11/16/2025		04:13	0-0	.000	0-0	.000	0-0	.000	0	0	0	2.3	3	0	0	0	0	0	4.0
UNLV	11/22/2025		16:33	0-2	.000	0-0	.000	1-2	.500	0	3	3	2.4	0	2	1	0	1	1	3.4
Utah Tech	11/25/2025		21:36	1-5	.200	1-2	.500	0-0	.000	0	2	2	2.3	1	2	1	0	0	3	3.3
Little Rock	11/28/2025		19:31	2-3	.667	0-0	.000	0-0	.000	0	0	0	2.0	2	0	3	0	2	4	3.4
Southeast Mo. St.	11/29/2025		13:54	2-3	.667	0-1	.000	0-0	.000	0	1	1	1.9	2	0	1	0	1	4	3.5
McNeese	12/05/2025		12:56	1-2	.500	0-1	.000	3-4	.750	0	1	1	1.8	1	0	0	0	0	5	3.7
San Francisco	12/06/2025		24:33	7-9	.778	1-2	.500	0-0	.000	1	1	2	1.8	1	3	2	0	3	15	4.8
at Penn St.	12/09/2025		17:58	1-5	.200	0-1	.000	0-0	.000	1	1	2	1.8	0	0	4	0	1	2	4.5
at Oregon St.	12/14/2025		14:54	1-5	.200	1-2	.500	2-2	1.000	0	0	0	1.7	0	0	0	0	3	5	4.6
at Gonzaga	12/16/2025		26:23	5-9	.556	2-4	.500	0-0	.000	0	2	2	1.7	1	1	2	0	2	12	5.2
Totals		0	231:05	26-57	.456	6-18	.333	9-14	.643	3	19	22	1.7	18	11	18	0	18	67	5.2

Player Averages

Games Played	Minutes/ game	Points/ game	FG Pct	3FG Pct	FT Pct	Rebounds/ game	Assists/ game	Turnovers/ game	Assist/Turnover ratio	Steals/ game	Blocks/ game
13	17.8	5.2	45.6	33.3	64.3	1.7	0.8	1.4	0.6	1.4	0.0





2025-26 Arizona St. Women's Basketball  
Individual Game-by-Game  
All games

Page 4/11  
as of Dec 17, 2025

#7 FANTINI, Martina

Opponent	Date	GS	MIN	Total		3-Pointers		Free throws		Rebounds				PF	A	TO	BLK	STL	PTS	AVG
				FG-FGA	PCT	3FG-3FGA	PCT	FT-FTA	PCT	OFF	DEF	TOT	AVG							
Coppin St.	11/03/2025		08:58	1-2	.500	0-0	.000	0-0	.000	2	1	3	3.0	2	0	2	2	0	2	2.0
Eastern Wash.	11/08/2025		13:00	0-1	.000	0-0	.000	0-0	.000	1	1	2	2.5	2	0	2	0	0	0	1.0
at San Diego	11/13/2025		15:56	3-4	.750	0-0	.000	0-0	.000	0	5	5	3.3	3	1	1	2	2	6	2.7
at Santa Clara	11/16/2025		16:36	3-4	.750	0-0	.000	0-0	.000	3	3	6	4.0	1	2	2	1	0	6	3.5
UNLV	11/22/2025		03:14	0-0	.000	0-0	.000	0-0	.000	0	1	1	3.4	0	0	1	0	1	0	2.8
Utah Tech	11/25/2025		17:34	1-2	.500	0-0	.000	0-2	.000	4	5	9	4.3	1	0	2	1	0	2	2.7
Little Rock	11/28/2025		11:24	2-3	.667	0-0	.000	0-0	.000	0	1	1	3.9	3	2	1	0	1	4	2.9
Southeast Mo. St.	11/29/2025		07:50	1-3	.333	0-0	.000	0-0	.000	1	2	3	3.8	0	0	0	0	1	2	2.8
McNeese	12/05/2025		00:05	0-0	.000	0-0	.000	0-0	.000	0	0	0	3.3	0	0	0	0	0	0	2.4
San Francisco	12/06/2025		04:00	0-1	.000	0-0	.000	0-0	.000	1	2	3	3.3	0	0	0	0	0	0	2.2
at Penn St.	12/09/2025		10:30	1-1	1.000	0-0	.000	0-2	.000	1	0	1	3.1	4	0	2	0	0	2	2.2
at Oregon St.	12/14/2025		07:42	0-2	.000	0-1	.000	0-0	.000	0	1	1	2.9	1	0	2	0	0	0	2.0
at Gonzaga	12/16/2025		18:31	3-5	.600	0-0	.000	1-2	.500	4	2	6	3.2	3	1	1	1	2	7	2.4
Totals		0	135:19	15-28	.536	0-1	.000	1-6	.167	17	24	41	3.2	20	6	16	7	7	31	2.4

Player Averages

Games Played	Minutes/game	Points/game	FG Pct	3FG Pct	FT Pct	Rebounds/game	Assists/game	Turnovers/game	Assist/Turnover ratio	Steals/game	Blocks/game
13	10.4	2.4	53.6	0.0	16.7	3.2	0.5	1.2	0.4	0.5	0.5



2025-26 Arizona St. Women's Basketball  
Individual Game-by-Game  
All games

Page 5/11  
as of Dec 17, 2025

#11 WASHENITZ, Marley

Opponent	Date	GS	MIN	Total		3-Pointers		Free throws		Rebounds				PF	A	TO	BLK	STL	PTS	AVG
				FG-FGA	PCT	3FG-3FGA	PCT	FT-FTA	PCT	OFF	DEF	TOT	AVG							
Coppin St.	11/03/2025	*	28:22	5-13	.385	2-8	.250	5-5	1.000	0	2	2	2.0	4	1	3	0	4	17	17.0
Eastern Wash.	11/08/2025	*	27:22	4-10	.400	1-4	.250	5-9	.556	1	6	7	4.5	3	2	1	0	3	14	15.5
at San Diego	11/13/2025	*	27:45	7-12	.583	4-7	.571	1-2	.500	0	4	4	4.3	3	6	1	0	2	19	16.7
at Santa Clara	11/16/2025	*	32:59	5-9	.556	1-3	.333	0-0	.000	0	6	6	4.8	3	2	1	0	1	11	15.3
UNLV	11/22/2025	*	40:00	1-7	.143	1-3	.333	0-0	.000	1	3	4	4.6	4	5	3	0	1	3	12.8
Utah Tech	11/25/2025	*	20:32	3-9	.333	0-3	.000	2-4	.500	1	3	4	4.5	3	1	1	0	2	8	12.0
Little Rock	11/28/2025	*	32:53	3-7	.429	1-3	.333	2-3	.667	0	3	3	4.3	1	3	1	1	3	9	11.6
Southeast Mo. St.	11/29/2025	*	21:47	4-9	.444	1-5	.200	0-0	.000	1	4	5	4.4	2	4	1	0	1	9	11.3
McNeese	12/05/2025	*	33:31	1-9	.111	0-4	.000	0-0	.000	1	3	4	4.3	4	4	4	1	1	2	10.2
San Francisco	12/06/2025	*	36:48	1-5	.200	0-2	.000	3-4	.750	0	4	4	4.3	2	6	6	0	2	5	9.7
at Penn St.	12/09/2025	*	10:12	1-1	1.000	0-0	.000	2-2	1.000	0	2	2	4.1	5	0	0	0	1	4	9.2
at Oregon St.	12/14/2025	*	42:07	2-9	.222	1-4	.250	0-0	.000	0	5	5	4.2	3	3	1	0	4	5	8.8
at Gonzaga	12/16/2025	*	33:56	5-13	.385	2-6	.333	0-0	.000	0	4	4	4.2	4	4	2	0	3	12	9.1
Totals		13	388:14	42-113	.372	14-52	.269	20-29	.690	5	49	54	4.2	41	41	25	2	28	118	9.1

Player Averages

Games Played	Minutes/game	Points/game	FG Pct	3FG Pct	FT Pct	Rebounds/game	Assists/game	Turnovers/game	Assist/Turnover ratio	Steals/game	Blocks/game
13	29.9	9.1	37.2	26.9	69.0	4.2	3.2	1.9	1.6	2.2	0.2



2025-26 Arizona St. Women's Basketball  
Individual Game-by-Game  
All games

Page 6/11  
as of Dec 17, 2025

#12 MOORE, Makayla

Opponent	Date	GS	MIN	Total		3-Pointers		Free throws		Rebounds				PF	A	TO	BLK	STL	PTS	AVG
				FG-FGA	PCT	3FG-3FGA	PCT	FT-FTA	PCT	OFF	DEF	TOT	AVG							
Coppin St.	11/03/2025		04:10	0-1	.000	0-1	.000	0-0	.000	0	1	1	1.0	0	0	0	0	0	0	0.0
Eastern Wash.	11/08/2025		18:27	1-3	.333	1-2	.500	0-0	.000	1	0	1	1.0	2	1	0	0	1	3	1.5
at San Diego	11/13/2025		12:18	1-1	1.000	1-1	1.000	0-0	.000	1	1	2	1.3	0	0	1	1	2	3	2.0
at Santa Clara	11/16/2025		05:16	0-0	.000	0-0	.000	0-0	.000	0	1	1	1.3	0	0	1	0	0	0	1.5
UNLV	11/22/2025		00:32	0-0	.000	0-0	.000	0-0	.000	0	0	0	1.0	0	0	0	0	0	0	1.2
Utah Tech	11/25/2025		16:16	0-5	.000	0-3	.000	0-0	.000	0	2	2	1.2	3	1	0	0	1	0	1.0
Little Rock	11/28/2025		08:50	0-3	.000	0-3	.000	0-0	.000	1	0	1	1.1	0	0	0	0	1	0	0.9
Southeast Mo. St.	11/29/2025		07:53	4-4	1.000	1-1	1.000	0-0	.000	1	0	1	1.1	0	0	0	0	0	9	1.9
McNeese	12/05/2025		00:56	0-0	.000	0-0	.000	0-0	.000	0	0	0	1.0	0	0	0	0	0	0	1.7
San Francisco	12/06/2025		03:33	0-0	.000	0-0	.000	0-0	.000	0	0	0	0.9	1	0	0	0	1	0	1.5
at Penn St.	12/09/2025		00:60	0-0	.000	0-0	.000	0-0	.000	0	0	0	0.8	0	0	0	0	0	0	1.4
at Oregon St.	12/14/2025		01:52	0-0	.000	0-0	.000	0-0	.000	0	0	0	0.8	0	0	0	0	0	0	1.3
Totals		0	81:03	6-17	.353	3-11	.273	0-0	.000	4	5	9	0.8	6	2	2	1	6	15	1.3

Player Averages

Games Played	Minutes/ game	Points/ game	FG Pct	3FG Pct	FT Pct	Rebounds/ game	Assists/ game	Turnovers/ game	Assist/Turnover ratio	Steals/ game	Blocks/ game
12	6.8	1.3	35.3	27.3	0.0	0.8	0.2	0.2	1.0	0.5	0.1



2025-26 Arizona St. Women's Basketball  
Individual Game-by-Game  
All games

Page 7/11  
as of Dec 17, 2025

#13 POA, Last-Tear

Opponent	Date	GS	MIN	Total		3-Pointers		Free throws		Rebounds				PF	A	TO	BLK	STL	PTS	AVG
				FG-FGA	PCT	3FG-3FGA	PCT	FT-FTA	PCT	OFF	DEF	TOT	AVG							
Coppin St.	11/03/2025	*	29:36	2-4	.500	0-1	.000	1-2	.500	3	1	4	4.0	2	10	5	1	1	5	5.0
at Santa Clara	11/16/2025		30:32	3-9	.333	1-2	.500	7-7	1.000	1	4	5	4.5	2	5	3	0	2	14	9.5
UNLV	11/22/2025	*	22:57	1-5	.200	0-0	.000	0-0	.000	1	1	2	3.7	1	3	2	0	1	2	7.0
Utah Tech	11/25/2025	*	15:15	3-6	.500	0-2	.000	3-3	1.000	0	1	1	3.0	4	2	4	0	0	9	7.5
Little Rock	11/28/2025	*	14:12	0-3	.000	0-1	.000	0-0	.000	1	3	4	3.2	2	3	3	0	1	0	6.0
Southeast Mo. St.	11/29/2025	*	28:13	5-11	.455	1-4	.250	1-2	.500	2	3	5	3.5	2	10	2	0	2	12	7.0
McNeese	12/05/2025	*	26:35	1-2	.500	0-1	.000	7-9	.778	1	4	5	3.7	1	3	6	2	1	9	7.3
San Francisco	12/06/2025	*	18:15	2-5	.400	2-3	.667	1-2	.500	0	1	1	3.4	2	2	5	0	2	7	7.3
at Penn St.	12/09/2025	*	21:06	1-4	.250	1-3	.333	1-2	.500	0	2	2	3.2	3	4	4	0	2	4	6.9
at Oregon St.	12/14/2025	*	27:07	2-2	1.000	1-1	1.000	2-2	1.000	0	1	1	3.0	3	4	5	0	2	7	6.9
at Gonzaga	12/16/2025	*	23:11	0-3	.000	0-1	.000	0-0	.000	0	0	0	2.7	2	5	1	0	0	0	6.3
Totals		10	256:58	20-54	.370	6-19	.316	23-29	.793	9	21	30	2.7	24	51	40	3	14	69	6.3

Player Averages

Games Played	Minutes/ game	Points/ game	FG Pct	3FG Pct	FT Pct	Rebounds/ game	Assists/ game	Turnovers/ game	Assist/Turnover ratio	Steals/ game	Blocks/ game
11	23.4	6.3	37.0	31.6	79.3	2.7	4.6	3.6	1.3	1.3	0.3



2025-26 Arizona St. Women's Basketball  
Individual Game-by-Game  
All games

Page 8/11  
as of Dec 17, 2025

#14 CARRERA, Heloisa

Opponent	Date	GS	MIN	Total		3-Pointers		Free throws		Rebounds				PF	A	TO	BLK	STL	PTS	AVG
				FG-FGA	PCT	3FG-3FGA	PCT	FT-FTA	PCT	OFF	DEF	TOT	AVG							
Coppin St.	11/03/2025	*	24:45	6-11	.545	0-0	.000	1-2	.500	1	4	5	5.0	4	1	3	1	1	13	13.0
Eastern Wash.	11/08/2025	*	19:21	2-7	.286	0-0	.000	2-3	.667	2	2	4	4.5	4	1	2	1	0	6	9.5
at San Diego	11/13/2025	*	20:22	3-6	.500	0-0	.000	0-0	.000	3	3	6	5.0	3	1	2	0	0	6	8.3
at Santa Clara	11/16/2025	*	23:24	4-8	.500	0-0	.000	0-0	.000	1	3	4	4.8	4	0	2	0	0	8	8.3
UNLV	11/22/2025	*	34:60	8-12	.667	0-0	.000	0-0	.000	2	6	8	5.4	1	1	2	1	1	16	9.8
Utah Tech	11/25/2025	*	19:00	6-9	.667	0-0	.000	0-0	.000	4	3	7	5.7	4	1	2	0	0	12	10.2
Little Rock	11/28/2025	*	22:21	3-8	.375	0-0	.000	0-0	.000	2	3	5	5.6	1	0	0	0	0	6	9.6
Southeast Mo. St.	11/29/2025	*	29:45	9-15	.600	0-0	.000	3-3	1.000	4	6	10	6.1	0	0	2	2	1	21	11.0
McNeese	12/05/2025	*	20:54	3-7	.429	0-0	.000	0-0	.000	4	7	11	6.7	4	0	2	0	0	6	10.4
San Francisco	12/06/2025	*	23:36	4-5	.800	0-0	.000	0-0	.000	0	2	2	6.2	2	1	2	0	0	8	10.2
at Penn St.	12/09/2025	*	26:42	0-0	.000	0-0	.000	4-4	1.000	2	2	4	6.0	3	0	3	0	1	4	9.6
at Oregon St.	12/14/2025	*	37:18	6-12	.500	0-0	.000	0-0	.000	1	6	7	6.1	3	0	1	0	0	12	9.8
at Gonzaga	12/16/2025	*	21:32	1-5	.200	0-0	.000	1-1	1.000	2	0	2	5.8	3	1	1	1	2	3	9.3
Totals		13	323:58	55-105	.524	0-0	.000	11-13	.846	28	47	75	5.8	36	7	24	6	6	121	9.3

Player Averages

Games Played	Minutes/ game	Points/ game	FG Pct	3FG Pct	FT Pct	Rebounds/ game	Assists/ game	Turnovers/ game	Assist/Turnover ratio	Steals/ game	Blocks/ game
13	24.9	9.3	52.4	0.0	84.6	5.8	0.5	1.8	0.3	0.5	0.5





2025-26 Arizona St. Women's Basketball  
Individual Game-by-Game  
All games

Page 9/11  
as of Dec 17, 2025

#21 BRACKENS, McKinna

Opponent	Date	GS	MIN	Total		3-Pointers		Free throws		Rebounds				PF	A	TO	BLK	STL	PTS	AVG
				FG-FGA	PCT	3FG-3FGA	PCT	FT-FTA	PCT	OFF	DEF	TOT	AVG							
Coppin St.	11/03/2025	*	37:28	6-13	.462	0-4	.000	2-5	.400	4	4	8	8.0	3	3	2	1	2	14	14.0
Eastern Wash.	11/08/2025	*	30:35	3-11	.273	1-2	.500	0-2	.000	1	5	6	7.0	3	5	0	1	3	7	10.5
at San Diego	11/13/2025	*	18:37	4-8	.500	0-0	.000	2-2	1.000	1	2	3	5.7	3	1	0	1	1	10	10.3
at Santa Clara	11/16/2025	*	36:31	7-17	.412	0-0	.000	9-12	.750	6	5	11	7.0	2	2	4	0	0	23	13.5
UNLV	11/22/2025	*	39:30	10-17	.588	3-5	.600	0-0	.000	3	7	10	7.6	2	2	0	1	0	23	15.4
Utah Tech	11/25/2025	*	26:45	8-14	.571	3-5	.600	0-0	.000	3	7	10	8.0	0	1	1	2	1	19	16.0
Little Rock	11/28/2025	*	28:51	5-9	.556	0-1	.000	1-6	.167	1	5	6	7.7	0	2	1	0	0	11	15.3
Southeast Mo. St.	11/29/2025	*	24:37	4-11	.364	0-1	.000	2-4	.500	3	4	7	7.6	1	3	3	1	0	10	14.6
McNeese	12/05/2025	*	37:22	4-9	.444	1-3	.333	5-6	.833	2	13	15	8.4	0	2	2	1	0	14	14.6
San Francisco	12/06/2025	*	31:02	6-8	.750	1-1	1.000	2-4	.500	0	4	4	8.0	2	2	1	0	1	15	14.6
at Penn St.	12/09/2025	*	31:14	5-10	.500	1-2	.500	4-4	1.000	4	7	11	8.3	1	3	5	1	5	15	14.6
at Oregon St.	12/14/2025	*	28:36	5-8	.625	0-0	.000	2-4	.500	1	3	4	7.9	3	0	1	0	0	12	14.4
Totals		12	371:09	67-135	.496	10-24	.417	29-49	.592	29	66	95	7.9	20	26	20	9	13	173	14.4

Player Averages

Games Played	Minutes/game	Points/game	FG Pct	3FG Pct	FT Pct	Rebounds/game	Assists/game	Turnovers/game	Assist/Turnover ratio	Steals/game	Blocks/game
12	30.9	14.4	49.6	41.7	59.2	7.9	2.2	1.7	1.3	1.1	0.8



2025-26 Arizona St. Women's Basketball  
Individual Game-by-Game  
All games

Page 10/11  
as of Dec 17, 2025

#22 GRICE, Timya

Opponent	Date	GS	MIN	Total		3-Pointers		Free throws		Rebounds											
				FG-FGA	PCT	3FG-3FGA	PCT	FT-FTA	PCT	OFF	DEF	TOT	AVG	PF	A	TO	BLK	STL	PTS	AVG	
Eastern Wash.	11/08/2025		02:38	1-1	1.000	0-0	.000	1-2	.500	1	2	3	3.0	0	0	0	0	0	3	3.0	
at San Diego	11/13/2025		01:41	0-0	.000	0-0	.000	0-0	.000	0	0	0	1.5	1	0	0	0	0	0	1.5	
Little Rock	11/28/2025		01:28	0-1	.000	0-0	.000	2-4	.500	1	1	2	1.7	0	0	1	0	0	2	1.7	
Southeast Mo. St.	11/29/2025		02:26	0-0	.000	0-0	.000	1-2	.500	0	0	0	1.3	0	0	0	0	0	1	1.5	
San Francisco	12/06/2025		01:56	0-0	.000	0-0	.000	0-0	.000	0	0	0	1.0	0	0	0	0	0	0	1.2	
Totals		0	10:09	1-2	.500	0-0	.000	4-8	.500	2	3	5	1.0	1	0	1	0	0	6	1.2	

Player Averages

Games Played	Minutes/ game	Points/ game	FG Pct	3FG Pct	FT Pct	Rebounds/ game	Assists/ game	Turnovers/ game	Assist/Turnover ratio	Steals/ game	Blocks/ game
5	2.0	1.2	50.0	0.0	50.0	1.0	0.0	0.2	0.0	0.0	0.0



2025-26 Arizona St. Women's Basketball  
Individual Game-by-Game  
All games

Page 11/11  
as of Dec 17, 2025

#24 DAVENPORT, Deborah

Opponent	Date	GS	MIN	Total		3-Pointers		Free throws		Rebounds				PF	A	TO	BLK	STL	PTS	AVG
				FG-FGA	PCT	3FG-3FGA	PCT	FT-FTA	PCT	OFF	DEF	TOT	AVG							
Coppin St.	11/03/2025		07:00	0-1	.000	0-0	.000	0-0	.000	1	0	1	1.0	1	1	0	0	0	0	0.0
Eastern Wash.	11/08/2025		14:26	1-3	.333	0-0	.000	0-0	.000	3	3	6	3.5	0	0	0	0	0	2	1.0
at San Diego	11/13/2025		14:43	1-1	1.000	0-0	.000	0-0	.000	0	1	1	2.7	1	0	0	0	0	2	1.3
at Santa Clara	11/16/2025		03:29	0-1	.000	0-0	.000	0-0	.000	2	0	2	2.5	0	0	0	0	0	0	1.0
UNLV	11/22/2025		01:45	0-0	.000	0-0	.000	0-0	.000	0	1	1	2.2	0	0	1	0	0	0	0.8
Utah Tech	11/25/2025		13:15	1-4	.250	0-1	.000	0-0	.000	2	3	5	2.7	2	1	1	1	2	2	1.0
Little Rock	11/28/2025		15:56	0-1	.000	0-0	.000	0-0	.000	2	1	3	2.7	0	1	1	2	2	0	0.9
Southeast Mo. St.	11/29/2025		15:23	1-3	.333	0-0	.000	0-0	.000	3	4	7	3.3	2	0	0	0	4	2	1.0
McNeese	12/05/2025		20:42	1-1	1.000	0-0	.000	0-0	.000	0	4	4	3.3	3	0	3	2	0	2	1.1
San Francisco	12/06/2025		17:23	2-2	1.000	0-0	.000	1-2	.500	2	3	5	3.5	2	1	3	0	1	5	1.5
at Penn St.	12/09/2025		11:34	2-6	.333	0-0	.000	0-0	.000	1	1	2	3.4	2	1	1	0	0	4	1.7
at Oregon St.	12/14/2025		16:24	2-2	1.000	1-1	1.000	0-2	.000	1	1	2	3.3	1	0	0	1	0	5	2.0
at Gonzaga	12/16/2025	*	29:38	2-3	.667	0-0	.000	0-0	.000	3	1	4	3.3	3	0	3	0	1	4	2.2
Totals		1	181:37	13-28	.464	1-2	.500	1-4	.250	20	23	43	3.3	17	5	13	6	10	28	2.2

Player Averages

Games Played	Minutes/game	Points/game	FG Pct	3FG Pct	FT Pct	Rebounds/game	Assists/game	Turnovers/game	Assist/Turnover ratio	Steals/game	Blocks/game
13	14.0	2.2	46.4	50.0	25.0	3.3	0.4	1.0	0.4	0.8	0.5



Arizona St. Women's Basketball  
Individual Career Summaries  
All games

Page 1/8  
as of Dec 17, 2025

**BRACKENS, Mckinna**

				Field Goals		3-Point		F-Throws		Rebounds									Scoring	
SEASON	TEAM	GP-GS	MIN/AVG	FG-FGA	FG%	3FG-3FGA	3FG%	FT-FTA	FT%	OFF	DEF	TOT	AVG	PF-FO	A	TO	BLK	STL	PTS	AVG
2023-24	UNLV	24-1	219/9.1	15-32	.469	1-3	.333	29-33	.879	20	46	66	2.8	19-0	12	8	6	11	60	2.5
2024-25	UNLV	34-34	914/26.9	129-290	.445	26-84	.310	49-70	.700	58	137	195	5.7	59-0	48	49	12	27	333	9.8
2025-26	ASU	12-12	371/30.9	67-135	.496	10-24	.417	29-49	.592	29	66	95	7.9	20-0	26	20	9	13	173	14.4
TOTAL FOR ASU		12-12	371/30.9	67-135	.496	10-24	.417	29-49	.592	29	66	95	7.9	20-0	26	20	9	13	173	14.4
TOTAL		70-47	1504/21.5	211-457	.462	37-111	.333	107-152	.704	107	249	356	5.1	98-0	86	77	27	51	566	8.1

**Single Game Highs**

Statistic	Value	
Points	23	vs UNLV 11/22/25, at Santa Clara 11/16/25
Rebounds	15	vs McNeese 12/05/25
Assists	5	vs Eastern Wash. 11/08/25, vs Fresno St. 12/29/24, at Northwestern 12/18/24
Steals	5	at Penn St. 12/09/25
Blocks	3	at Northwestern 12/18/24
FG Made	10	vs UNLV 11/22/25
FG Attempts	17	at Santa Clara 11/16/25, vs UNLV 11/22/25
3FG Made	3	vs UCF 11/27/24, vs UNLV 11/22/25, vs Utah Tech 11/25/25
3FG Attempts	6	vs Wyoming 01/19/25
FT Made	9	at Santa Clara 11/16/25
FT Attempts	12	at Santa Clara 11/16/25

**CARRERA, Heloisa**

				Field Goals		3-Point		F-Throws		Rebounds										Scoring	
SEASON	TEAM	GP-GS	MIN/AVG	FG-FGA	FG%	3FG-3FGA	3FG%	FT-FTA	FT%	OFF	DEF	TOT	AVG	PF-FO	A	TO	BLK	STL	PTS	AVG	
2024-25	UM	13-0	63/4.9	10-17	.588	0-0	.000	2-4	.500	10	4	14	1.1	9-1	6	7	1	3	22	1.7	
2025-26	ASU	13-13	324/24.9	55-105	.524	0-0	.000	11-13	.846	28	47	75	5.8	36-0	7	24	6	6	121	9.3	
TOTAL FOR ASU		13-13	324/24.9	55-105	.524	0-0	.000	11-13	.846	28	47	75	5.8	36-0	7	24	6	6	121	9.3	
TOTAL		26-13	387/14.9	65-122	.533	0-0	.000	13-17	.765	38	51	89	3.4	45-1	13	31	7	9	143	5.5	

**Single Game Highs**

Statistic	Value	
Points	21	vs Southeast Mo. St. 11/29/25
Rebounds	11	vs McNeese 12/05/25
Assists	2	vs Ark.-Pine Bluff 11/10/24
Steals	2	vs Alabama St. 11/30/24, at Gonzaga 12/16/25
Blocks	2	vs Southeast Mo. St. 11/29/25
FG Made	9	vs Southeast Mo. St. 11/29/25
FG Attempts	15	vs Southeast Mo. St. 11/29/25
FT Made	4	at Penn St. 12/09/25
FT Attempts	4	at Penn St. 12/09/25



Arizona St. Women's Basketball  
Individual Career Summaries  
All games

Page 2/8  
as of Dec 17, 2025

DAVENPORT, Deborah

				Field Goals		3-Point		F-Throws		Rebounds										Scoring	
SEASON	TEAM	GP-GS	MIN/AVG	FG-FGA	FG%	3FG-3FGA	3FG%	FT-FTA	FT%	OFF	DEF	TOT	AVG	PF-FO	A	TO	BLK	STL	PTS	AVG	
2025-26	ASU	13-1	182/14.0	13-28	.464	1-2	.500	1-4	.250	20	23	43	3.3	17-0	5	13	6	10	28	2.2	
TOTAL		13-1	182/14.0	13-28	.464	1-2	.500	1-4	.250	20	23	43	3.3	17-0	5	13	6	10	28	2.2	

Single Game Highs

Statistic	Value	
Points	5	vs San Francisco 12/06/25, at Oregon St. 12/14/25
Rebounds	7	vs Southeast Mo. St. 11/29/25
Assists	1	5 times
Steals	4	vs Southeast Mo. St. 11/29/25
Blocks	2	vs Little Rock 11/28/25, vs McNeese 12/05/25
FG Made	2	4 times
FG Attempts	6	at Penn St. 12/09/25
3FG Made	1	at Oregon St. 12/14/25
3FG Attempts	1	vs Utah Tech 11/25/25, at Oregon St. 12/14/25
FT Made	1	vs San Francisco 12/06/25
FT Attempts	2	vs San Francisco 12/06/25, at Oregon St. 12/14/25





**Arizona St. Women's Basketball**  
**Individual Career Summaries**  
**All games**

Page 3/8  
as of Dec 17, 2025

**ELLIOTT, Gabby**

				Field Goals		3-Point		F-Throws		Rebounds										Scoring	
SEASON	TEAM	GP-GS	MIN/AVG	FG-FGA	FG%	3FG-3FGA	3FG%	FT-FTA	FT%	OFF	DEF	TOT	AVG	PF-FO	A	TO	BLK	STL	PTS	AVG	
2020-21	CU	25-25	659/26.4	139-310	.448	20-59	.339	41-67	.612	48	77	125	5.0	56-4	36	76	8	32	339	13.6	
2021-22	CU	12-10	315/26.2	47-132	.356	13-47	.277	6-11	.545	10	24	34	2.8	28-1	17	27	4	13	113	9.4	
2022-23	MSU	11-11	219/19.9	45-84	.536	5-18	.278	9-18	.500	28	33	61	5.5	28-0	11	14	6	17	104	9.5	
2023-24	MSU	4-0	72/18.1	13-27	.481	2-6	.333	2-3	.667	5	16	21	5.3	5-0	8	5	0	5	30	7.5	
2024-25	PSU	29-27	845/29.1	156-329	.474	41-97	.423	42-57	.737	32	100	132	4.6	73-3	52	69	3	37	395	13.6	
2025-26	ASU	13-13	425/32.7	81-194	.418	16-52	.308	36-50	.720	19	53	72	5.5	25-0	25	36	3	34	214	16.5	
TOTAL FOR ASU		13-13	425/32.7	81-194	.418	16-52	.308	36-50	.720	19	53	72	5.5	25-0	25	36	3	34	214	16.5	
TOTAL		94-86	2535/27.0	481-1076	.447	97-279	.348	136-206	.660	142	303	445	4.7	215-8	149	227	24	138	1195	12.7	

**Single Game Highs**

Statistic	Value	
Points	32	vs Purdue 02/27/25, vs Iowa 01/01/25
Rebounds	16	at Santa Clara 11/16/25
Assists	5	at Santa Clara 11/16/25
Steals	8	vs San Francisco 12/06/25
Blocks	3	at Ohio St. 12/11/22
FG Made	12	vs Iowa 01/01/25
FG Attempts	22	vs Iowa 01/01/25, at Gonzaga 12/16/25, vs Notre Dame 03/04/21
3FG Made	7	vs Iowa 01/01/25
3FG Attempts	11	vs Iowa 01/01/25
FT Made	7	at Gonzaga 12/16/25
FT Attempts	10	at Gonzaga 12/16/25

**FANTINI, Martina**

				Field Goals		3-Point		F-Throws		Rebounds									Scoring	
SEASON	TEAM	GP-GS	MIN/AVG	FG-FGA	FG%	3FG-3FGA	3FG%	FT-FTA	FT%	OFF	DEF	TOT	AVG	PF-FO	A	TO	BLK	STL	PTS	AVG
2025-26	ASU	13-0	135/10.4	15-28	.536	0-1	.000	1-6	.167	17	24	41	3.2	20-0	6	16	7	7	31	2.4
TOTAL		13-0	135/10.4	15-28	.536	0-1	.000	1-6	.167	17	24	41	3.2	20-0	6	16	7	7	31	2.4

**Single Game Highs**

Statistic	Value	
Points	7	at Gonzaga 12/16/25
Rebounds	9	vs Utah Tech 11/25/25
Assists	2	vs Little Rock 11/28/25, at Santa Clara 11/16/25
Steals	2	at Gonzaga 12/16/25, at San Diego 11/13/25
Blocks	2	vs Coppin St. 11/03/25, at San Diego 11/13/25
FG Made	3	at Gonzaga 12/16/25, at San Diego 11/13/25, at Santa Clara 11/16/25
FG Attempts	5	at Gonzaga 12/16/25
3FG Attempts	1	at Oregon St. 12/14/25
FT Made	1	at Gonzaga 12/16/25
FT Attempts	2	at Gonzaga 12/16/25, vs Utah Tech 11/25/25, at Penn St. 12/09/25



Arizona St. Women's Basketball  
Individual Career Summaries  
All games

Page 4/8  
as of Dec 17, 2025

GRICE, Timya

				Field Goals		3-Point		F-Throws		Rebounds										Scoring	
SEASON	TEAM	GP-GS	MIN/AVG	FG-FGA	FG%	3FG-3FGA	3FG%	FT-FTA	FT%	OFF	DEF	TOT	AVG	PF-FO	A	TO	BLK	STL		PTS	AVG
2025-26	ASU	5-0	10/2.0	1-2	.500	0-0	.000	4-8	.500	2	3	5	1.0	1-0	0	1	0	0		6	1.2
TOTAL		5-0	10/2.0	1-2	.500	0-0	.000	4-8	.500	2	3	5	1.0	1-0	0	1	0	0		6	1.2

Single Game Highs

Statistic	Value	
Points	3	vs Eastern Wash. 11/08/25
Rebounds	3	vs Eastern Wash. 11/08/25
FG Made	1	vs Eastern Wash. 11/08/25
FG Attempts	1	vs Little Rock 11/28/25, vs Eastern Wash. 11/08/25
FT Made	2	vs Little Rock 11/28/25
FT Attempts	4	vs Little Rock 11/28/25

HAYES, Acacia

				Field Goals		3-Point		F-Throws		Rebounds										Scoring	
SEASON	TEAM	GP-GS	MIN/AVG	FG-FGA	FG%	3FG-3FGA	3FG%	FT-FTA	FT%	OFF	DEF	TOT	AVG	PF-FO	A	TO	BLK	STL		PTS	AVG
2022-23	WestKy	33-29	732/22.2	128-261	.490	29-82	.354	86-114	.754	20	43	63	1.9	44-0	54	60	3	38		371	11.2
2023-24	WestKy	24-22	679/28.3	111-264	.420	36-113	.319	77-91	.846	15	29	44	1.8	45-0	43	51	7	31		335	14.0
2024-25	WestKy	28-24	832/29.7	109-254	.429	34-117	.291	63-85	.741	14	51	65	2.3	38-0	48	52	7	55		315	11.3
TOTAL FOR ASU		0-0	0/0.0	0-0	.000	0-0	.000	0-0	.000	0	0	0	0.0	0-0	0	0	0	0		0	0.0
TOTAL		85-75	2242/26.4	348-779	.447	99-312	.317	226-290	.779	49	123	172	2.0	127-0	145	163	17	124		1021	12.0

Single Game Highs

Statistic	Value	
Points	31	vs UTSA 01/07/23
Rebounds	8	at Mercer 11/12/24
Assists	5	vs Ball St. 12/10/23, at Indiana St. 11/04/24
Steals	10	at Indiana St. 11/04/24
Blocks	3	at Mercer 11/12/24
FG Made	11	vs Kansas St. 11/24/23
FG Attempts	18	vs Ball St. 12/10/23
3FG Made	4	6 times
3FG Attempts	10	at Vanderbilt 11/15/23, vs UTEP 01/20/24
FT Made	10	vs Nevada 12/20/23, vs Nevada 12/20/24
FT Attempts	13	vs UTSA 01/07/23



Arizona St. Women's Basketball  
Individual Career Summaries  
All games

Page 5/8  
as of Dec 17, 2025

JONES, Jordan

SEASON	TEAM	GP-GS	MIN/AVG	Field Goals		3-Point		F-Throws		Rebounds									Scoring	
				FG-FGA	FG%	3FG-3FGA	3FG%	FT-FTA	FT%	OFF	DEF	TOT	AVG	PF-FO	A	TO	BLK	STL	PTS	AVG
2022-23	Denver	19-12	423/22.3	52-127	.409	13-42	.310	33-48	.688	20	58	78	4.1	50-1	31	60	4	8	150	7.9
2023-24	Denver	30-30	977/32.6	148-374	.396	39-140	.279	111-147	.755	32	173	205	6.8	90-4	87	116	6	31	446	14.9
2024-25	Denver	30-30	1065/35.5	184-458	.402	29-114	.254	200-249	.803	27	173	200	6.7	78-1	87	103	10	35	597	19.9
TOTAL FOR ASU		0-0	0/0.0	0-0	.000	0-0	.000	0-0	.000	0	0	0	0.0	0-0	0	0	0	0	0	0.0
TOTAL		79-72	2465/31.2	384-959	.400	81-296	.274	344-444	.775	79	404	483	6.1	218-6	205	279	20	74	1193	15.1

Single Game Highs

Statistic	Value	
Points	30	at St. Thomas (MN) 01/25/25, at North Dakota 01/11/25
Rebounds	16	vs Omaha 12/29/23
Assists	8	vs North Ala. 12/21/24
Steals	4	at High Point 11/17/24
Blocks	2	at Stetson 12/02/22, vs Omaha 12/29/23, vs North Dakota 02/22/25
FG Made	10	vs South Dakota 01/02/25
FG Attempts	24	vs Omaha 01/22/25
3FG Made	4	at Idaho 12/15/22, vs Central Ark. 11/24/23
3FG Attempts	9	vs Central Ark. 11/24/23, vs UC San Diego 11/24/24
FT Made	15	at North Dakota 01/11/25
FT Attempts	16	vs St. Thomas (MN) 02/08/25, at North Dakota 01/11/25, vs Christian Brothers 11/22/24

LOVETT, Jyah

SEASON	TEAM	GP-GS	MIN/AVG	Field Goals		3-Point		F-Throws		Rebounds									Scoring	
				FG-FGA	FG%	3FG-3FGA	3FG%	FT-FTA	FT%	OFF	DEF	TOT	AVG	PF-FO	A	TO	BLK	STL	PTS	AVG
2023-24	SJSU	17-17	550/32.3	86-207	.415	20-51	.392	57-68	.838	8	34	42	2.5	54-0	55	77	1	41	249	14.6
2024-25	ASU	31-21	875/28.2	107-259	.413	31-88	.352	31-35	.886	11	71	82	2.6	83-0	62	51	2	28	276	8.9
2025-26	ASU	13-0	231/17.8	26-57	.456	6-18	.333	9-14	.643	3	19	22	1.7	18-0	11	18	0	18	67	5.2
TOTAL FOR ASU		44-21	1106/25.1	133-316	.421	37-106	.349	40-49	.816	14	90	104	2.4	101-0	73	69	2	46	343	7.8
TOTAL		61-38	1655/27.1	219-523	.419	57-157	.363	97-117	.829	22	124	146	2.4	155-0	128	146	3	87	592	9.7

Single Game Highs

Statistic	Value	
Points	26	vs Fresno St. 01/03/24, at UNLV 01/10/24
Rebounds	7	vs Penn 12/30/24
Assists	7	vs Winthrop 11/25/23, vs Penn 12/30/24
Steals	5	vs Bethesda (CA) 11/27/23, at Saint Mary's (CA) 12/29/23
Blocks	1	at Montana St. 11/14/23, vs South Dakota 11/27/24, at UCF 02/12/25
FG Made	11	vs Fresno St. 01/03/24
FG Attempts	18	vs Fresno St. 01/03/24, at UNLV 01/10/24
3FG Made	4	at UNLV 01/10/24
3FG Attempts	8	vs South Dakota 11/27/24
FT Made	7	at Saint Mary's (CA) 12/29/23
FT Attempts	11	at Saint Mary's (CA) 12/29/23



Arizona St. Women's Basketball  
Individual Career Summaries  
All games

Page 6/8  
as of Dec 17, 2025

MOORE, Makayla

				Field Goals		3-Point		F-Throws		Rebounds									Scoring	
SEASON	TEAM	GP-GS	MIN/AVG	FG-FGA	FG%	3FG-3FGA	3FG%	FT-FTA	FT%	OFF	DEF	TOT	AVG	PF-FO	A	TO	BLK	STL	PTS	AVG
2022-23	SU	21-0	144/6.9	10-36	.278	1-7	.143	7-8	.875	17	15	32	1.5	11-0	3	8	1	3	28	1.3
2023-24	SU	28-28	817/29.2	124-280	.443	24-80	.300	43-59	.729	63	54	117	4.2	63-3	22	52	14	27	315	11.3
2024-25	ASU	21-5	439/20.9	27-77	.351	17-48	.354	3-3	1.000	26	40	66	3.1	36-1	13	17	0	15	74	3.5
2025-26	ASU	12-0	81/6.8	6-17	.353	3-11	.273	0-0	.000	4	5	9	0.8	6-0	2	2	1	6	15	1.3
TOTAL FOR ASU		33-5	520/15.8	33-94	.351	20-59	.339	3-3	1.000	30	45	75	2.3	42-1	15	19	1	21	89	2.7
TOTAL		82-33	1481/18.1	167-410	.407	45-146	.308	53-70	.757	110	114	224	2.7	116-4	40	79	16	51	432	5.3

Single Game Highs

Statistic	Value	
Points	23	vs UTRGV 01/11/24
Rebounds	10	vs UT Arlington 01/13/24
Assists	5	at UCF 02/12/25
Steals	3	5 times
Blocks	2	5 times
FG Made	11	vs UTRGV 01/11/24
FG Attempts	18	vs UTRGV 01/11/24
3FG Made	4	at Southern Utah 12/02/23, vs SFA 01/18/24, at BYU 02/22/25
3FG Attempts	7	vs California Baptist 02/03/24
FT Made	8	at UTRGV 02/24/24
FT Attempts	8	at UTRGV 02/24/24



Arizona St. Women's Basketball  
Individual Career Summaries  
All games

Page 7/8  
as of Dec 17, 2025

POA, Last-tear

				Field Goals		3-Point		F-Throws		Rebounds										Scoring	
SEASON	TEAM	GP-GS	MIN/AVG	FG-FGA	FG%	3FG-3FGA	3FG%	FT-FTA	FT%	OFF	DEF	TOT	AVG	PF-FO	A	TO	BLK	STL	PTS	AVG	
2022-23	LS	36-2	450/12.5	31-92	.337	10-30	.333	51-58	.879	7	36	43	1.2	46-0	42	35	4	19	123	3.4	
2023-24	LS	36-10	725/20.1	45-107	.421	10-34	.294	78-92	.848	7	47	54	1.5	70-0	109	75	13	40	178	4.9	
2024-25	LS	30-15	385/12.8	12-49	.245	5-22	.227	30-41	.732	7	22	29	1.0	54-0	56	38	3	7	59	2.0	
2025-26	ASU	11-10	257/23.4	20-54	.370	6-19	.316	23-29	.793	9	21	30	2.7	24-0	51	40	3	14	69	6.3	
TOTAL FOR ASU		11-10	257/23.4	20-54	.370	6-19	.316	23-29	.793	9	21	30	2.7	24-0	51	40	3	14	69	6.3	
TOTAL		113-37	1817/16.1	108-302	.358	31-105	.295	182-220	.827	30	126	156	1.4	194-0	258	188	23	80	429	3.8	

Single Game Highs

Statistic	Value	
Points	14	vs Auburn 03/08/24, at Santa Clara 11/16/25
Rebounds	6	at Southeastern La. 11/17/23, vs Alabama 02/11/24
Assists	10	vs Coppin St. 11/03/25, vs Southeast Mo. St. 11/29/25
Steals	6	vs Northwestern St. 12/17/23
Blocks	2	vs Kent St. 11/14/23, vs Rice 03/22/24, vs McNeese 12/05/25
FG Made	5	vs Southeast Mo. St. 11/29/25
FG Attempts	11	vs Southeast Mo. St. 11/29/25
3FG Made	3	at Arkansas 01/02/25
3FG Attempts	4	4 times
FT Made	10	vs N.C. Central 12/01/24
FT Attempts	14	vs N.C. Central 12/01/24



Arizona St. Women's Basketball  
Individual Career Summaries  
All games

Page 8/8  
as of Dec 17, 2025

WASHENITZ, Marley

				Field Goals		3-Point		F-Throws		Rebounds									Scoring	
SEASON	TEAM	GP-GS	MIN/AVG	FG-FGA	FG%	3FG-3FGA	3FG%	FT-FTA	FT%	OFF	DEF	TOT	AVG	PF-FO	A	TO	BLK	STL	PTS	AVG
2022-23	UP	28-16	407/14.6	35-101	.347	11-42	.262	10-11	.909	9	28	37	1.3	65-3	43	58	7	25	91	3.3
2023-24	UP	31-30	863/27.8	43-161	.267	5-39	.128	37-51	.725	30	90	120	3.9	95-6	109	111	10	41	128	4.1
2024-25	UP	32-32	919/28.7	101-286	.353	43-123	.350	53-77	.688	13	62	75	2.3	105-6	85	78	5	75	298	9.3
2025-26	ASU	13-13	388/29.9	42-113	.372	14-52	.269	20-29	.690	5	49	54	4.2	41-1	41	25	2	28	118	9.1
TOTAL FOR ASU		13-13	388/29.9	42-113	.372	14-52	.269	20-29	.690	5	49	54	4.2	41-1	41	25	2	28	118	9.1
TOTAL		104-91	2578/24.8	221-661	.334	73-256	.285	120-168	.714	57	229	286	2.8	306-16	278	272	24	169	635	6.1

Single Game Highs

Statistic	Value	
Points	20	vs New Hampshire 12/19/24, at California 02/02/25, vs Clemson 02/23/25
Rebounds	10	vs Lehigh 12/10/23, vs Le Moyne 12/28/23
Assists	8	vs Saint Francis 11/29/23, vs Florida St. 02/08/24
Steals	5	vs Georgia 12/20/23, vs Canisius 11/05/24, at Utah Tech 12/21/24
Blocks	5	vs Le Moyne 12/28/23
FG Made	7	vs New Hampshire 12/19/24, at San Diego 11/13/25
FG Attempts	17	vs Virginia 02/16/25
3FG Made	4	vs New Hampshire 12/19/24, at San Diego 11/13/25
3FG Attempts	10	vs Virginia 03/05/25
FT Made	7	at California 02/02/25
FT Attempts	9	vs Eastern Wash. 11/08/25

WILLIAMS, Amaya

				Field Goals		3-Point		F-Throws		Rebounds										Scoring	
SEASON	TEAM	GP-GS	MIN/AVG	FG-FGA	FG%	3FG-3FGA	3FG%	FT-FTA	FT%	OFF	DEF	TOT	AVG	PF-FO	A	TO	BLK	STL	PTS	AVG	
2025-26	ASU	13-3	221/17.0	25-58	.431	3-13	.231	8-13	.615	5	15	20	1.5	15-0	27	20	4	14	61	4.7	
TOTAL		13-3	221/17.0	25-58	.431	3-13	.231	8-13	.615	5	15	20	1.5	15-0	27	20	4	14	61	4.7	

Single Game Highs

Statistic	Value	
Points	18	vs Little Rock 11/28/25
Rebounds	6	vs Utah Tech 11/25/25
Assists	11	at San Diego 11/13/25
Steals	4	at Penn St. 12/09/25, at San Diego 11/13/25
Blocks	2	at Penn St. 12/09/25
FG Made	8	vs Little Rock 11/28/25
FG Attempts	10	vs Little Rock 11/28/25
3FG Made	2	at San Diego 11/13/25
3FG Attempts	3	at San Diego 11/13/25
FT Made	4	at Penn St. 12/09/25
FT Attempts	6	at Penn St. 12/09/25