

Cargo and Vehicle Inspection System

TimeScan

TimeScan is a passenger vehicles security screening system, to help quickly detect dangerous goods and contraband hidden in the vehicle, such as weapons, explosives, drugs, smuggled goods, etc. When the driver and passengers outside the cars, free from radiation, the scanning system move on the rail to scan. It may equip 200KV or 320 KV x-ray generator on the side and L-shaped detectors, providing high penetration, optimized viewing angle and high definition images.

TimeScan is used to scan car, bus, box vehicle, etc at the entrance of the parking lot and important government buildings, road traffic checkpoints, customs, border inspection ports, and big event venues. The system can be flexibly constructed according to customer requirements and conditions of the installation site. It can be integrated with License Plate Recognition System, real-time video and real-time capture to meet different project requirements.



Product Highlights

Mobile scanning:

Mobile design to move the scanning system on rail without a driver to drive the vehicle.

Small footprint:

The construction area of TimeScan is very small, and no additional base construction is needed.

Dual-energy imaging:

It can perform automatic substance identification, which can distinguish between organics, inorganic matters and difficult-to-penetrate metal objects. It helps operators quickly identify a variety of dangerous items.

Automatic License Plate Recognition(ALPR) option:

According to different customer needs, we can integrate automatic license plate recognition.

Specifications

Technical specifications

Tunnel size	3 (W) * 3 (H) m (can be customized)
Scanning speed	0.2m/s
Steel penetration	50 mm by 200KV, 70mm 300KV
Spatial resolution	Vertical 2mm/Horizontal 1.3mm
X ray dose per inspection	<7.2 μ Sv by 200KV
X ray leakage	<5 μ Sv/h, anywhere 10m away from the generator of the system
Noise	<65dB(A) , anywhere 1m away from the system
Detector shape	High resolution L-shaped detector line
Safety standard	Meet the requirements of GB15208.0-2005
Power consumption	Maximum 4KVA
Console	24-inch display
Film Safety	Guarantee ASA/ISO1600 Film



X-ray Generator (dual energy)

X-ray generator	200KV, sealed oil cooling, optional 320KV
Ray direction	From side

Imaging system

Operator uses password to login.

Checked vehicle information list, data query, user management, real-time curve, playback, etc.

Image function: color / black and white, increase, over increase, reverse color, highlight / darken, Color / black and white imaging, local enhancement, super enhancement, reverse color, organic Stripping, inorganic stripping, brightening, darkening, zoom in / out (1-64), etc.

Real-time video; real-time capture (Option).

Computer and other

Monitor	One 24-inch LCD monitor, 1920*1080
Console	A console which can lock the display and keyboard
CPU	Intel (R) i3(R)3.3GHz
RAM	4GB
Hard Disk	2T
Keyboard	Special designed
Platform	Windows 7 or Windows 10

Operating Environment

Operation temperature/Humidity	5°C- 45°C / 10%- 90% (non- condensing)
Storage temperature/Humidity	-25°C- 50°C / 10%- 95%(non- condensing)
	AC220V ± 20%, 50~60Hz ±3Hz



(+91)-11-41916615
+91-95999-53923

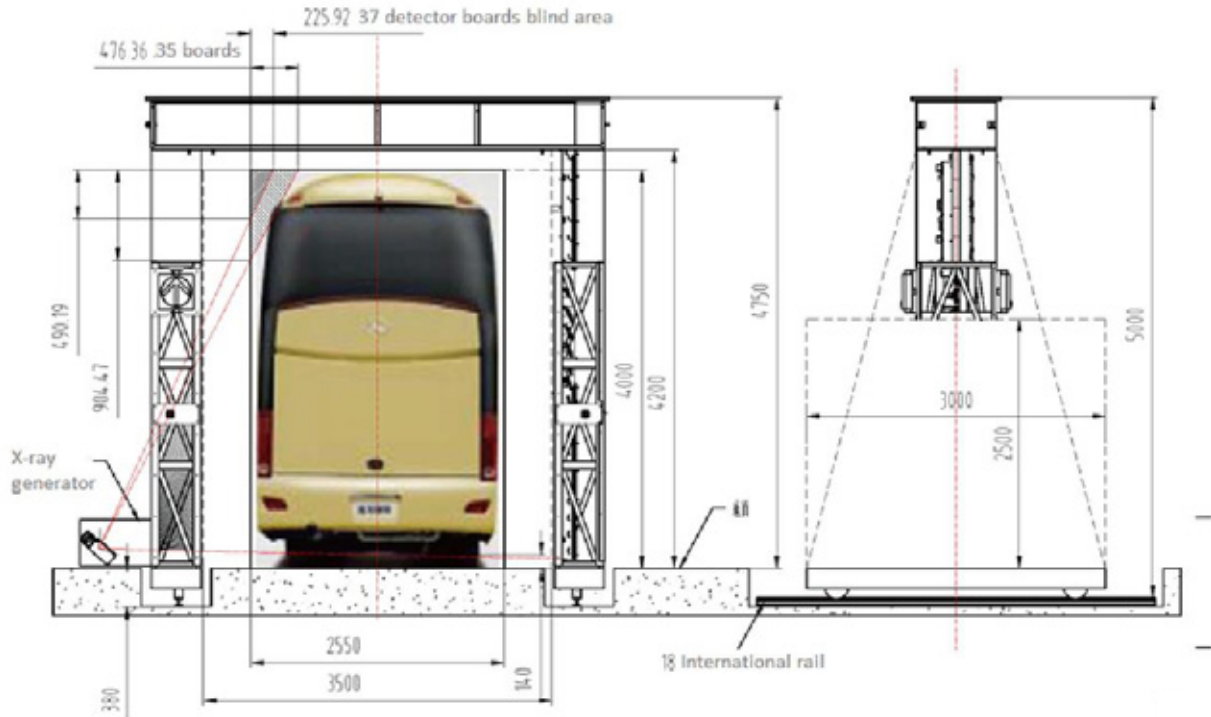


D-162, Okhla Industrial Area
Phase I, New Delhi, 110020

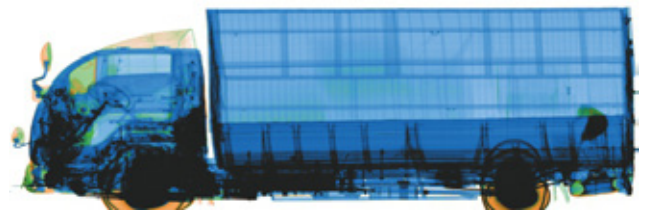
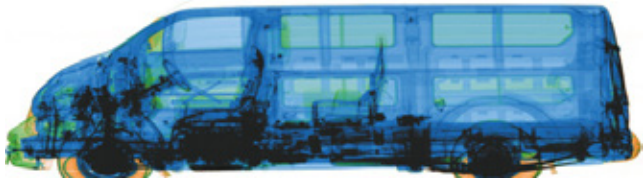


sales@timewatchindia.com
www.timewatchindia.com

Dimensional Drawing



Scanned Images



Head Office : D-162, Okhla Industrial Area Phase I,
New Delhi, 110020.

Regional Office : Mumbai, Bengaluru, Ahmedabad,
Chennai, Kolkata.

International Office : Dubai

Disclaimer : All pictures shown are for illustration purposes only. The actual product and color may vary due to product enhancement. The brief specification is mentioned and may change without prior notice. Please consult us before placing any order.

Phone : +91-95999-53923

Sales : sales@timewatchindia.com

Support : helpdesk@timewatchindia.com