



Under Vehicle Surveillance System

TW3000

TW3000 is under vehicle surveillance system (UVSS) for under vehicle security check. It helps detect contraband and illegal rendition under the vehicle quickly. It is faster and more accurate than the traditional under vehicle inspection mirror, greatly improved the speed and accuracy of the vehicle safety inspection, and saved time and manpower.

TW3000 is used at the entrance of the parking lot and important government buildings, road traffic checkpoints, customs, border inspection ports, and big event venues. The system is easy to move and install.



(+91)-11-41916615
+91-95999-53923



D-162, Okhla Industrial Area
Phase I, New Delhi, 110020



sales@timewatchindia.com
www.timewatchindia.com

Product Highlights

- Portable and easy/quick installation
- Advanced linear CCD scanning technology
- High resolution complete color image of under the vehicle
- Weather proof scanning unit (IP68 the highest level)
- Anti-fog function
- Multilingual Graphical User Interface(GUI)
- Option: Automated License Plate Reader (ALPR)

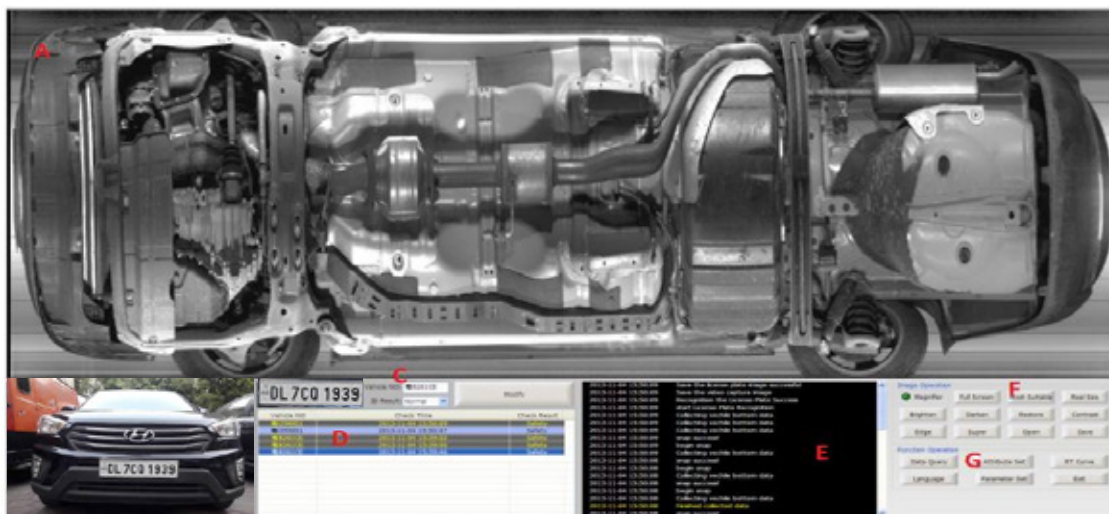
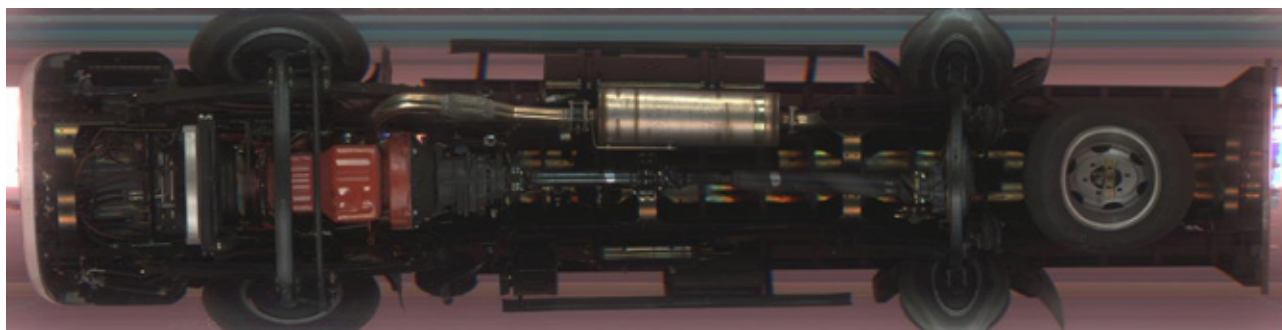
Specification

CCD Scanning	
Maximum scanning rate	18kHz
Vehicle speed	1-60 km/h, recommend < 30 km/h
View angle	170 degrees
Scanner data line	10 meters(length customizable)
Lighting	160W
Lighting components	2 single sealed LED surface light sources, life 50000h
Load-bearing weight	30T
Waterproof grade	IP68 (the highest level)
Weight of the scanning device	28KG
Size of the scanning device	450 x 400 x 88 mm
Imaging system	
Technology	Linear array CCD scan technology and dynamic imaging of BW/color
Scanning resolution	≥ 2048 pixels CCD / ≥ 4096 pixels CCD
Imaging speed	<1 second
Image display mode	Large-format horizontal display



Image storage format	Standard BMP or JPEG
System interface language	Can be customized
Image data transmission	Network RJ45
Scene image display	≥ 1 channel
Image search	Retrieve the image by date, time, license plate number, and images
Image resolution	12000 × 6144
Automatic scan	Display the image in 1s after the vehicle passes at a speed of 1-65km/h
Automatic image storage	Save no less than 10,000 pictures and delete the expired pictures automatically
Imaging function	Adjust saturation, contrast, balance and sharpening, zoom in and out (1-16), and local enlargement

Scanned Image



(+91)-11-41916615
+91-95999-53923



D-162, Okhla Industrial Area
Phase I, New Delhi, 110020



sales@timewatchindia.com
www.timewatchindia.com

- A. Under vehicle image display area: real-time display of vehicles at the detected image, historical images, and bottom of the vehicle under body after treatment images.
- B. Live video area: Via external plate camera, display video which is automatically capture vehicle license plate images when the vehicle passing the detection zone.
- C. License plate number information display area: Displaying the detected vehicle license plate capturing photos with automatic identification of the results. Click [Modify] button can modify the number of recognition errors.
- D. Vehicle information list: Checking vehicle information in all day, including license plate number, the checking time, vehicle surveillance results.
- E. Real-time log information list: real-time display of the region need to run the process produces some log information to facilitate the use of personnel or maintenance personnel system view real-time operation of the system state.
- F. Image manipulation functional areas: the image to zoom; brighten, darken; edge enhancement, super-enhanced operation.
- G. Functional operating areas: the license plate camera and used to set the relevant parameters linear array camera, as well as the system language, real-time curve, historical data query functions.

Computer and other	
Monitor	One 22-inch true color LCD monitor
Console	A console which can lock the display and keyboard
CPU	Intel Core Quad-Core Processor
RAM	DDR3, greater than 2GB
Hard Disk	500G High Speed Hard Disk
Graphics Card	DDR3, 192BIT Independent Graphics Card
Platform	Windows XP/ Windows 7



Operating environment

Operating temperature	-25 ° C ~ 60 ° C
Storage temperature	-40 ° C ~ 75 ° C
Power supply	AC110-240V 50~60Hz ±3Hz

Component

No.	Sub system	Qty	Hardware
1	Mobile vehicle scanning equipment	1 set	Camera
			Scanner frame
			Lighting system
			Vehicle sensor
2	Operating box	1 set	System host
			22 inch monitor
3	Video monitoring	1 set	Camera
		1 set	Tripod
4	Under vehicle surveillance system software	1 set	
5	License plate number recognition system (optional)	1 set	

Packing size

85x65x97cm 0.53CBM 95kg



Head Office : D-162, Okhla Industrial Area Phase I, New Delhi, 110020.

Regional Office : Mumbai, Bengaluru, Ahmedabad, Chennai, Kolkata.

International Office : Dubai

Disclaimer : All pictures shown are for illustration purposes only. The actual product and color may vary due to product enhancement. The brief specification is mentioned and may change without prior notice. Please consult us before placing any order.

Phone : +91-95999-53923

Sales : sales@timewatchindia.com

Support : helpdesk@timewatchindia.com