



Energy Saving



One key
turn off



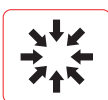
High Resolution
Color Display



Sound &
Light Alarm



Baggage
Counter



Compact
Design



Scan
Palletized Loads



X-Ray Baggage Scanner

TW5030

- Patented Linux operating system.
- Patented compact cabinet design.
- Multilingual operation.
- Automatic built in test and self diagnosis.
- Secure access Key.
- Continuous working 10000 hours above.
- Threat alert and material classification.
- Network-Ready.
- Energy saving design.
- One key turn off.
- Drugs and explosives inspection.
- Indication of the date and time.



(+91)-11-41916615
+91-95999-53923



D-162, Okhla Industrial Area
Phase I, New Delhi, 110020



sales@timewatchindia.com
www.timewatchindia.com

Specification

Wire Resolution	Typical AWG38
Penetration resolution	Typical AWG28
Spatial resolution	Vertical:1.0mm, horizontal:1.0mm
Penetration	Typical 12mm
Resolution of organic matter	1-120mm
Grayscale and mixture resolution	1-40mm
Resolution of inorganic objects	1-60mm
X-Ray dosage each inspection	≤4.5μSv (uGy)
Boundary Leakage	≤ 0.5μSv /h(uGy/h)
S/N ratio	<60dB
Conveyor speed	0.2m/s
Conveyor max load	100kg
Power consumption	0.5KW
Leakage current	≤5.0mA
Film Safety	Guarantee ASA/ISO1600 Film
Weight	270kg
Operation temperature/Humidity	5°C- 40°C/0%-90%
Storage temperature/Humidity	-20°C-60°C /10%-90%
Atmospheric pressure Operation	86kPa-106kPa AC
Power	220V(±10%-15%) 50±3Hz

General Specifications

X ray generator	80KV, oil cooling, from bottom to top
Electric roller	DC
Operating	Linux system
Monitor	21.5" LED screen, resolution: 1920*1080 pixel
Operation console	NO

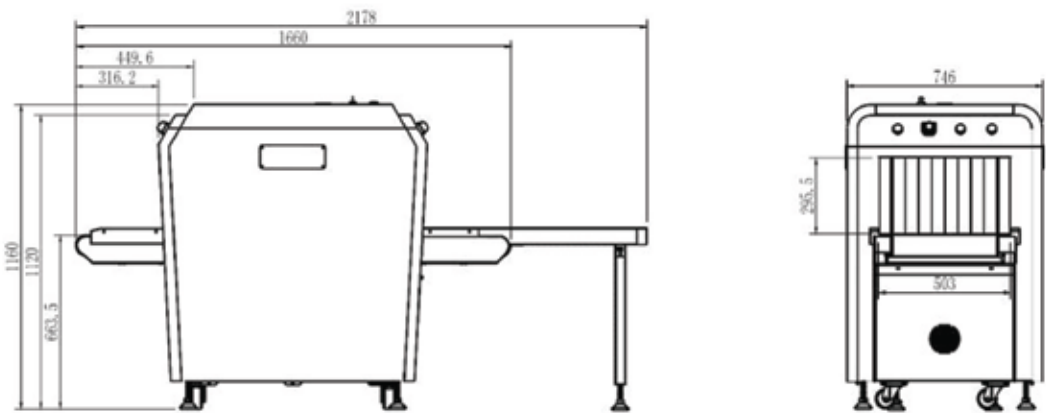
Functional characteristics

Power-on self-test	With the function of fault self-check, automatically judge the fault and prompt the fault code information in time. 1-64times enlargement continuity.
Image processing	With the function of Color and B & W, negative, high/low penetration, organic/inorganic stripping, general enhancement, pseudocolor, etc
Image Recall	30 preceding images recallable.
The No.s of images stored	Up to 10,000 images stored automatically.
Real-time curve	The real-time curve can be used to detect whether the acquisition system and components work normally.
Time setting	System time can be set
Probe setting	It can realize the manual deletion of the low and low energy detection board dead pixels, and display the deleted dead pixels in the display area.
Ray source setting	There are two source and analog source control modes, the source parameters of the digital source can be set.
Alarm system	The alarm function can be activated and deactivated, and the alarm type of the alarm box, sound and light alarm can be selected, and the sensitivity, minimum absorption rate, maximum absorption rate, and alarm duration can be set.
Troubleshooting	It can realize whether the components such as the entrance and exit light barrier, side panel switch, emergency stop switch and light source are normal, and display the standard value and current value of the detection voltage
Image setting	The drum running control direction and the image display moving direction can be set.
Software registration	It can realize software registration function and has serial number, registration code, registration status and system time information display.
User login	Log in by entering different user name and passwords, only when logging in can you make other settings.
User management	You can add, delete, edit the user name and password, set the user level to restore the deleted user.
Authority management	Different default permissions can be set according to user level.

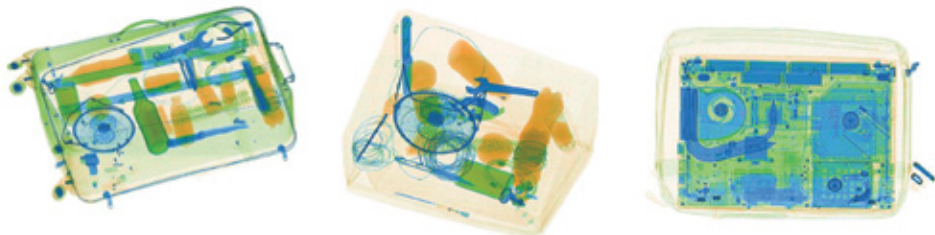


Language settings	English
Log management	User operations can be monitored to query user actions.
About	The version and device number can be displayed.
TIP report	The report can be generated by the tip operation after the tip insertion function is turned on, and the content of the report: user name, number of tip insertions, number of tags, false positive rate, probability of detection, probability of false positives.
Tip management	It can be set to enable and disable the insertion of dangerous goods, and can set the identification time, Prompt time, insertion frequency, proportion of single items inserted into dangerous goods, add tip filesand delete files.
Document management	It can query, open, and export the checked image.
Function setting	It can set log level, save the file time, whether to open the training function and setting the smart roller.
Data setting	Display system working hours, the total working hours of the ray source, the total number of system baggage and packages, and the total number of baggage packages this time, and clear the above data.
System parameter setting	It can select the exported data, pictures, and backup directory, select and adjust the motor type, detector type, whether to enable the debug mode, model, and gain, enter the corresponding IP address on network connection to realize sharing function, and have corresponding software to achieve system upgrade.

Dimensional Drawing



Scanned Image



Head Office : D-162, Okhla Industrial Area Phase I, New Delhi, 110020.

Regional Office : Mumbai, Bengaluru, Ahmedabad, Chennai, Kolkata.

International Office : Dubai

Disclaimer : All pictures shown are for illustration purposes only. The actual product and color may vary due to product enhancement. The brief specification is mentioned and may change without prior notice. Please consult us before placing any order.

Phone : +91-95999-53923
Sales : sales@timewatchindia.com
Support : helpdesk@timewatchindia.com