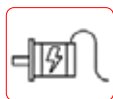




2 Pairs  
Infra Red



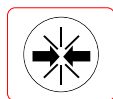
Illegal Intrusion  
Infrared Alarm



24V Servo  
Brushless Motor



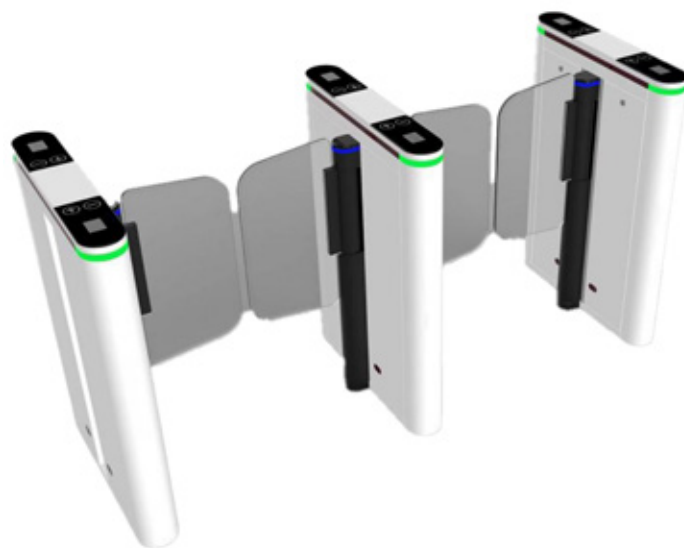
Negligible  
Maintenance



Inbuilt Anti-Collision  
& Anti-Pinch Function



Fast & Adjustable  
Opening Time(0.3s-1s)



## Swing Gate

### TWLD-SG-20

- Angle anti-collision, clutch structure can achieve anti-collision angle protection and homing.
- Current anti pinch and rebound in case of resistance; In case of resistance during the reset of the telescopic boom, it will automatically stop or the motor will stop working within the default time. It will be reset again after the default delay, and the force is very small ( $\leq 2\text{kg}$ ).
- Audible and visual alarm function: including illegal intrusion, trailing alarm and closing the gate.
- The mechanical part adopts CNC process, and the connector adopts high-temperature quenching process, which will not deform after long-term operation.
- High quality coupling is adopted to correct the coaxiality error.
- Full lamp effect (movement ceiling lamp, box glass lamp).
- It has a variety of traffic modes, including single / two-way free traffic, verified traffic and prohibited traffic, free matching, normal working mode and aging test mode switching.



(+91)-11-41916615  
+91-95999-53923



D-162, Okhla Industrial Area  
Phase I, New Delhi, 110020



sales@timewatchindia.com  
www.timewatchindia.com

- Fast and accurate, the minimum opening time can reach 0.3s-1s, and the switch is in place accurately.
- With intrusion alarm, follow-up alarm, reverse traffic alarm, long-time detention alarm and other prompts.
- Manually push open after power failure and automatically close after power on.
- Prevent violent gate breaking, forcibly push open the resistance rebound, or add a brake, push open the lock, and it can be reset automatically.
- Self protection function to prevent damage and crash of the product under special circumstances such as strong rush and excessive current.
- One key can be used to control the activation / deactivation status of the gate.
- With fire linkage, it can open the gate in an emergency and give an alarm when receiving the fire signal.
- Multiple anti pinch functions, reasonable distribution of infrared to ensure the safety in the pedestrian passage, infrared anti pinch and prevent the second opening of anti pinch infrared.
- When encountering obstacles, the unloading force shall be relieved to prevent pedestrians from being hurt.
- It can be used in combination with a variety of peripheral verification devices, as well as face, ID card, fingerprint, card swiping, code scanning and other verification methods.
- Normally open / normally closed function switching, applicable to different places.
- Secondary opening function: after opening the gate, the reverse intrusion alarm closes the gate. After the alarm is cancelled, the gate is opened again.
- With memory function, you can pass through multiple people after swiping the card for many times.
- Multi way highlight indicator light indicates passage.
- It can provide development interface for system integration.
- Power off and gate opening: in case of power failure, the gate rotates freely and meets the fire protection requirements.

## Specification

Overall dimension	700 x (120 + 82 / 120 + 82 x 2) x 1020mm
Box	Carbon steel plate + baking paint, tempered glass, acrylic, thickness 1.0 + 1.2mm
Traffic width	Standard 600mm (≤ 900mm can be customized)
Traffic Speed	35-40 People / Min.



Opening mode	Card swiping and other Face, Fingerprint verification opening, infrared induction automatic opening, button opening, etc
Gate opening interface	Dry contact signal, driving current $\geq 10\text{mA}$
Power	40-60W
Traffic direction	One way / two-way traffic (set by the user)
Protection function	Clutch anti-collision, infrared anti pinch, illegal intrusion infrared alarm
Drive motor	DC 24V brushless motor, low noise
Infrared quantity	2 pairs
Automatic reset function	After the gate is opened, the system will be locked automatically if there is no passage within the specified time, and the passage time can be adjusted;



**Head Office :** D-162, Okhla Industrial Area Phase I, New Delhi, 110020.



**Regional Office :** Mumbai, Bengaluru, Ahmedabad, Chennai, Kolkata.

**International Office :** Dubai



**Phone :** +91-95999-53923



**Sales :** sales@timewatchindia.com



**Support :** helpdesk@timewatchindia.com

**Disclaimer :** All pictures shown are for illustration purposes only. The actual product and color may vary due to product enhancement. The brief specification is mentioned and may change without prior notice. Please consult us before placing any order.