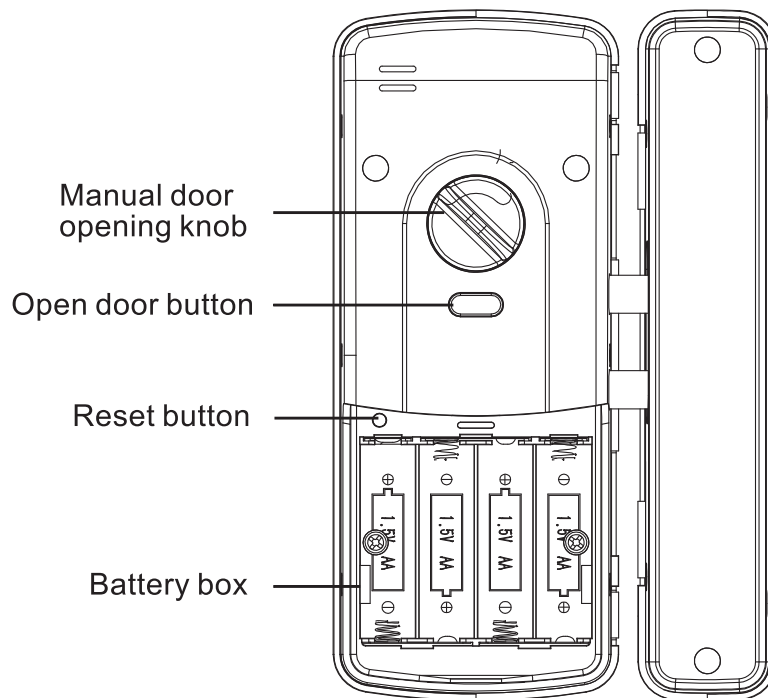
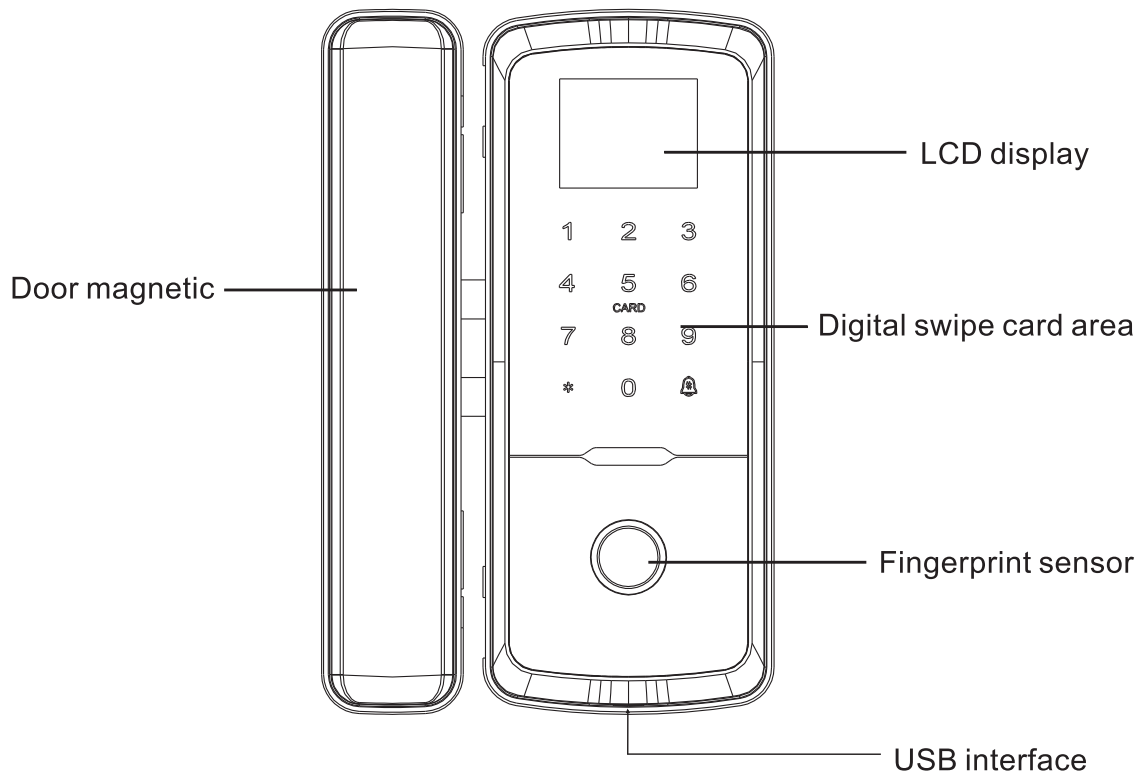




User Manual

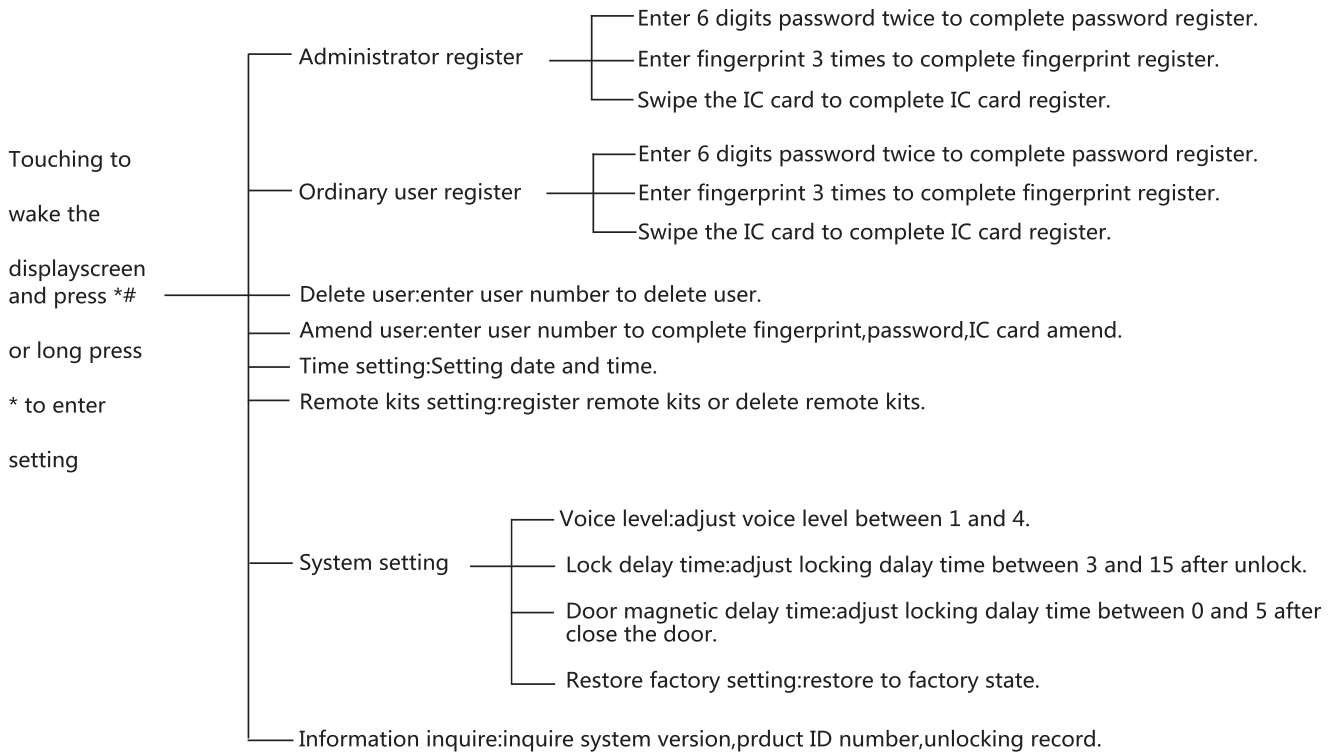
FGL-14 Smart Glass Door Lock

Product diagram



Settings and usage

Settings and usage



Restore factory setting: restore factory setting by long press the circle key upside of battery compartment.

Manual locking/unlocking inside the door: manual lock/unlock by pressing unlock key or twisting the knob behind of lock.

Locking outside the door: press 0# to lock.

Technical parameters

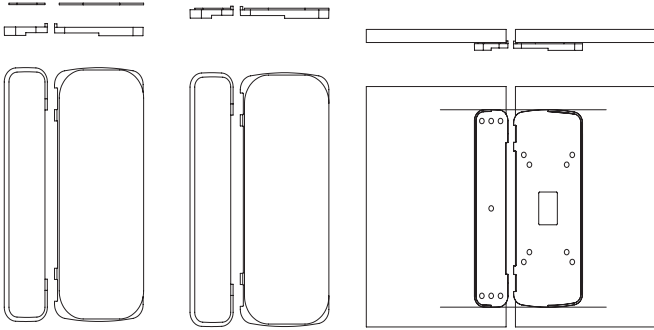
Power supply	1.5VAA x 4 alkaline battery or USB5VDC
Working current	<250mA
Standby current	<100uA
Unlocking mode	Fingerprint,password,IC card,remote
	kit(optional)
Fingerprint capacity	100 groups
Password capacity	1000 groups
IC card capacity	1000 groups
Remote kits capacity	16 groups
Userinfo capacity	1000 groups
Recorder capacity	10000 groups
Rejection rate	≦0.15%
False recognition rete	≦0.00004%
Working temprature	-20-60
Working humidity	20-93%

Installation instructions

Attach the main lock body/sub-lock fixing plate

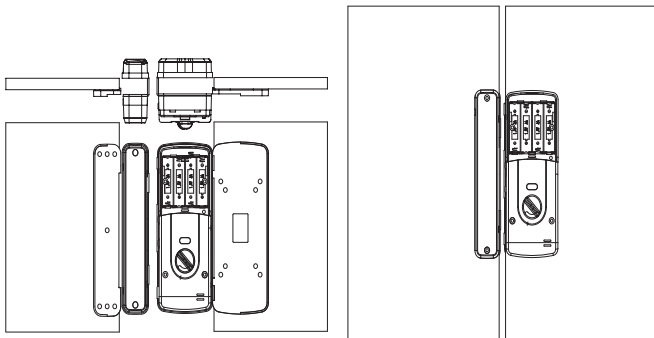
1. Stick the double-sided adhesive tapes to the flat side of the adhesive tapes, select the appropriate installation height, and stick the adhesive tapes to the glass door (the upper and lower alignment of the adhesive tapes must be ensured).

--- The mounting plate of the main lock and door magnetic is pasted with double-sided adhesive tape and fixed on the glass door in parallel alignment---



2. Install the main lock /door magnetic

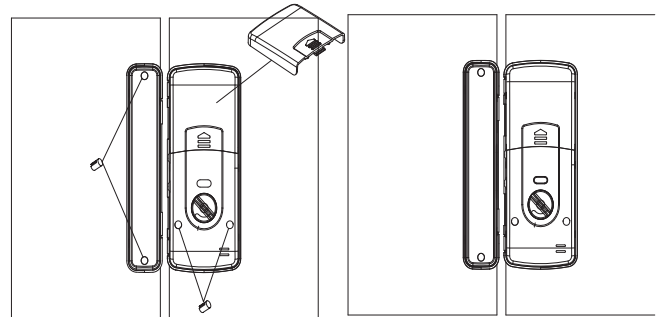
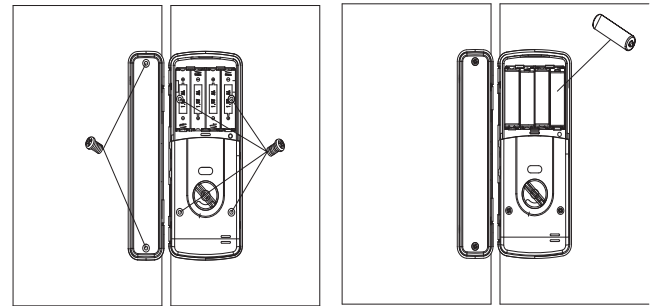
Push the main lock/door magnetic into place along the fixing plate respectively as shown in the figure



3. Fixing the main lock and door magnetic

Take off the battery cover, tighten the 6 screws of the main lock and door magnetic as shown in the diagram, and then put the rubber plug in the accessories package into the screw hole and press it flat. Then load the battery as shown in the diagram and close the battery cover.

--- Install the battery after installing the fixing screw of the main lock and door magnetic. Install the rubber plug and battery cover after the test product function is normal---



4. Left-open/right-open direction adjustment method

When left-open/right-open direction is needed to be reversed, remove the 6 screws on both sides of the rear lock body (battery holding part), rotate the front lock body 180°, and then tighten the 6 screws.

Fault description

The phenomenon of	Reason	Elimination method
No response of unlock with ID card/fingerprint/ password/remote kit	1. The battery is dead 2. Other	1.Change the battery or use emergency power 2. Restore factory Settings or contact after-sales service
The locking tongue does not move or quiver	1. Doors are not aligned 2. Low battery	1. Try again after the doors are aligned 2. Unlock with emergency power
Unable to read fingerprints	1. Dry and wrinkled finger skin 2. After long use, the collection surface becomes unclean or has scratches 3. The other	1. Make your fingers slightly moist to make your fingerprints clear 2. Use non-drying adhesive tape to paste the dirtson the surface of the head 3. Restore factory Settings or contact after-sales service
The door cannot be automatically locked	1. The battery is dead 2. Not automatic lock mode	1. Replace the battery 2. Set to automatic lock door mode
Cannot set door card/fingerprint/password	1. Not being empowered 2. Not following the steps 3. Input the IC card/ fingerprint/password over 500 groups in total or fingerprint more than 100 groups.	1. Authorization (enter management fingerprint) 2. Operate according to the previous door lock setting.) 3. Delete no open door card/fingerprint/password required
Bluetooth connection failed	1. The mobile phone bluetooth closed. 2. Over 10meters between the mobile phone and lock. 3. Low battery	1. Open the bluetooth of mobile phone,amd WeChart bluetooth. 2. The mobile phone as far as possible close to the lock. 3. Replace new battery.

Maintenance and After-Sales

Lock maintenance and maintenance

- Daily maintenance and maintenance
1. Do not let the lock face contact with corrosive substances, so as to avoid damaging protective layer of the lock face and affecting the gloss of the lock face.
 2. If the door is deformed, it will cause the combined inclined tongue to enter frame box to have too much friction and cannot be completely extended. At position of the door gusset plate should be adjusted.
 3. After using the fingerprint window for a long time, the surface will be stained wet. Please wipe it gently with a soft dry cloth.
 4. Please replace the battery immediately after the alarm of low battery, so the normal use of the door lock.When replacing the battery, please pay attention positive and negative terminals.
 5. Do not use hard or sharp objects to mark the surface of the fingerprinting (including fingernails).
 6. Each time a fingerprint is taken, the fingerprint part of the finger is flat fingerprint reader.
 7. If the lock is not flexible in rotation or cannot be maintained in the correct professionals should be asked to add mechanical lubricating oil to the lock core.
 8. Always keep lubricant at the rotating part of the lock body to ensure transmission and prolong service life. It is recommended to check once every or once a year, and check whether the fixing screws are loose to ensure the
 9. Alkaline batteries are recommended;Carbon and alkaline batteries and batteries can not be mixed, depleted batteries please remove.