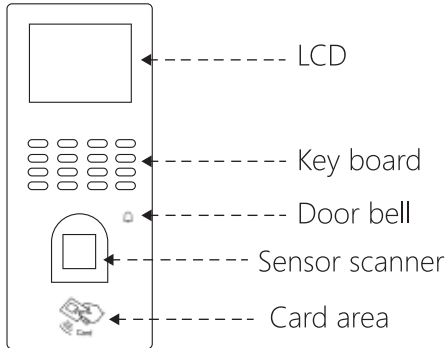


# User Manual

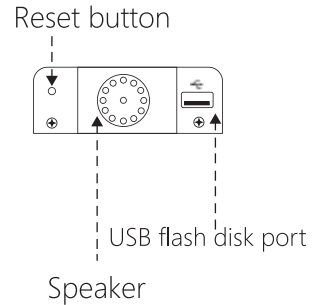
**ULtraACR802F**

## 1.Appearance Introduction

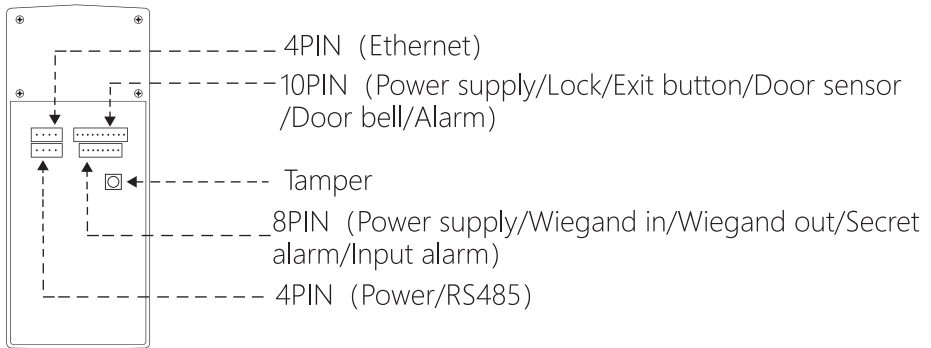
### The front side



### The bottom



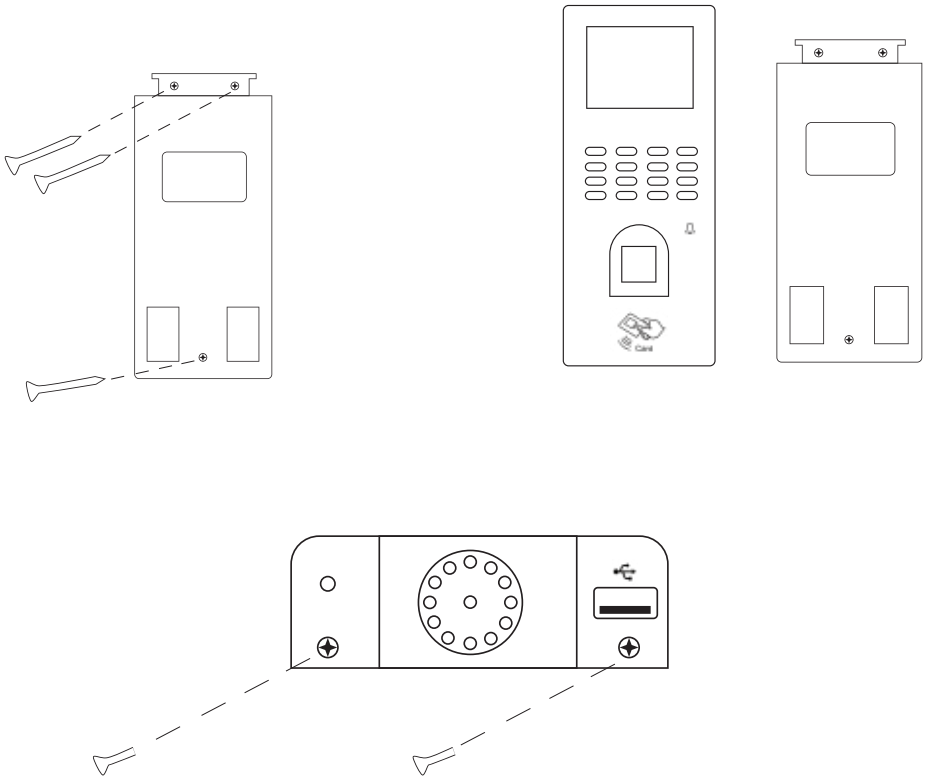
### The back side



## 2. Installation on the wall

Before installation, please check whether power plug is available.

- 1) Make mark of the holder on the wall and confirm the device installing position.
- 2) Drill holes according to the marks.
- 3) Fix the holder on the wall.
- 4) Put the device on the holder and fix it.



### 3.Note

- 1) Please do not install with electricity on.
- 2) Recommend to use the 12V/3A power supply.
- 3) Keep the device from sunshine or wet environment.
- 4) Read and follow the diagram carefully to connect the cable.
- 5) Connect the ground wire first if there is strong static electricity in order to protect the device.

### 4.Register New Users



Menu -- Register -- User -- Finger/Card/  
 Password(Please note that registration ID  
 is related to the attendance record. )



(+91)-11-41916615  
 +91-95999-53923

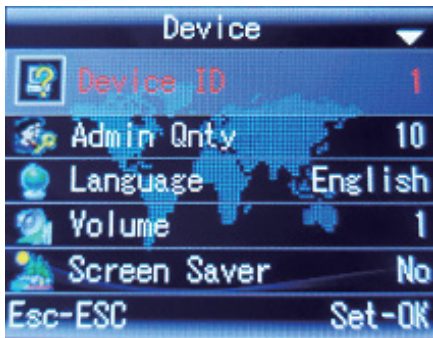


D-162, Okhla Industrial Area  
 Phase I, New Delhi, 110020



sales@timewatchindia.com  
 www.timewatchindia.com

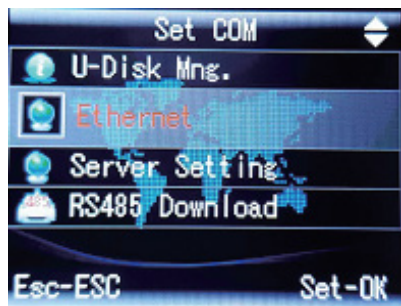
## 5.Set Device ID

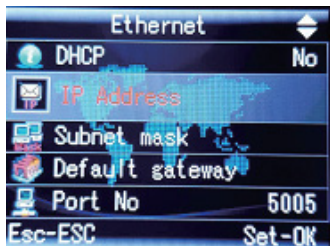


Menu -- Advanced -- Device -- Device ID  
 (To change the Device ID)

## 6.Set COM

1) Menu -- Set COM -- Ethernet -- TCP/IP Setting (To enter the communication setting interface)





2) Use Ethernet to connect the device to the computer.



IP address: 192.168.1.224  
 Subnet mask: 255.255.255.0  
 Default gateway: 192.168.1.1

IP address: 192.168.1.100  
 Subnet mask: 255.255.255.0  
 Default gateway: 192.168.1.1

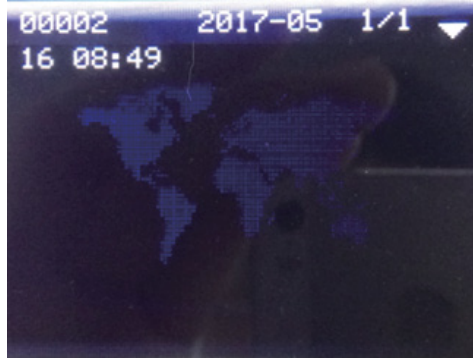
## 7.Set Time & Date



Menu -- Advanced -- Set Date Time  
 (To set the date and time)

## 8.Check Personal Record

OK -- put in personal fingerprint/card/password -- get to see the personal record



## 9.Access Control Setting



Access control: Menu -- Lock Ctrl

User time zone: to set the day/week time zone for access control

Unlock group: to set user group and week zone and time limit

Relay time: to set the time gap between the activation of the relay and its rest mode

Lock type: to set alarm type and alarm delay

Threat protection: to set the threat alarm mode-- open the door and activate alarm, open the door, activate alarm

Alarm protection: to activate the "alarm" relay output signal

Anti pass: to set the synchronizing record, otherwise will take it as illegal record

Interlock: to set the interlock function into "on" or "off" mode

Users: to set the user quantity for opening the door

Verify-fail count: to set verification times for the alarm activation

Tamper: to set it to alarm when the button get loose

Wiegand: to set the wiegand as the output communication mode

## 10. Schematic Diagram of Access Control Wiring

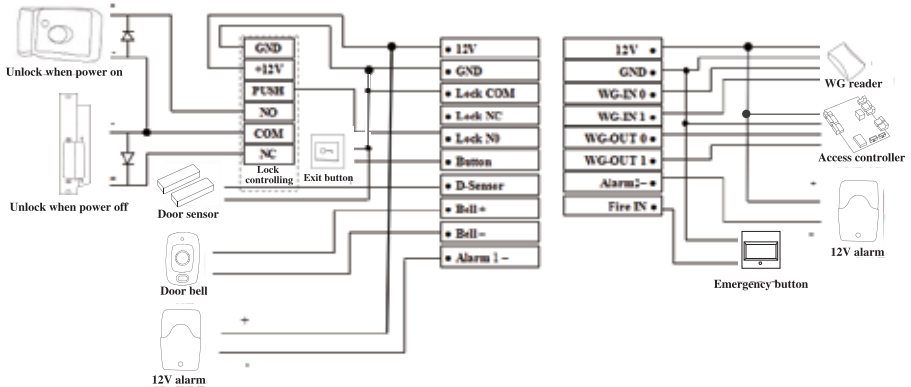
### 1) Diagram for cable



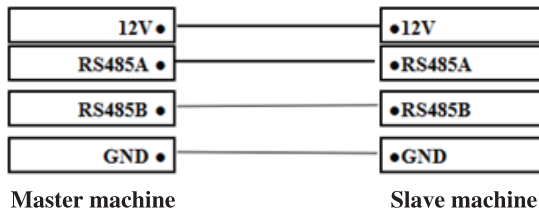
### 2) Diagram for setting the cable

Connect the electric lock & door bell & door sensor & exit button & alarm & Fire control & Wiegand, and as the way to connect the wiegand reader.





3) Connect the RS485 interface



Menu -- Download data -- RS485 download -- Slave machine -- Yes

To turn off the RS485 interface

Remove the back board and when the device set alarm;press

Menu -- Download data -- RS485 download -- Slave machine -- No

## 11.FAQ

- 1) Slow or fail to recognize fingerprint
  - Make sure to put the finger on the middle of the fingerprint sensor  
Check if there is injury in the finger.
  - Check if there is dirt or wet on the fingerprint sensor, then clean it and try verification again.
  - If the finger is too dry, breathe some air to the finger and try again.
- 2) Fail to connect device to software via Ethernet
  - Check if the device ID is the same in both the hardware and software, and ping device IP to check whether workable. After confirmed device ID and network, then try to connect again.
- 3) Fail to unlock the door even if recognized successfully
  - Check the user right setting.
  - Make sure the correct connection between relay signal and the electric lock.
- 4) No record in the software original record
  - Check whether there is corresponding employee registration ID, in the employee information and check the check in date. Then collect all the data again.
- 5) Indication of "Exceeding of access control record"
  - Menu -- Advanced -- Device -- Record -- Set "0".
- 6) Making alarm noise
  - Check if the back board is fixed with the Tamper button, Change the setting into "No" in the "Lock ctrl" -- "Tamper", and then reboot the device.





## Contact Us

D-162, Okhla Industrial Area, Phase-I, Delhi 110020

Email: [sales@timewatchindia.com](mailto:sales@timewatchindia.com)

Phone: +91-11-41916615

Mobile No: +91-95999-53923



New Delhi - NCR



Mumbai



Ahmedabad



Bengaluru



Chennai



Kolkata



Dubai

[www.timewatchindia.com](http://www.timewatchindia.com)