



Energy Saving



One Key
Turn off



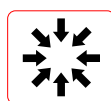
High Resolution
Color Display



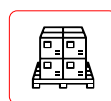
Sound &
Light Alarm



Baggage
Counter



Compact
Design



Scan
Palletized Loads



X-Ray Baggage Scanner

TW6040B

TW6040B X-ray Baggage scanner is ideal for screening everything with AI Features (Optional) from mid-size packages to oddly shaped items and palletized loads. It is strategically designed for mid-size baggage and parcels to thwart the cleverest attempts at hiding weapons, drugs, stolen goods, and other contraband. Dual-energy imaging provides automatic color coding of materials.

- Linux Operating System.
- Built-in Self-Check & Diagnosis.
- Continuous 10000 working hours.
- High-resolution color display.
- One key turn off.
- Sound & Light Alarm.
- AI Based Threat Detection



(+91)-11-41916615
+91-95999-53923



D-162, Okhla Industrial Area
Phase I, New Delhi, 110020



sales@timewatchindia.com
www.timewatchindia.com

Specification

General Specification

| | |
|-----------------------------------|----------------------------------|
| Tunnel Size | 620mm*420mm (±10mm) |
| Product Size | 1993*870*1297mm |
| Wire Resolution | Typical AWG42 |
| Penetration Resolution | Typical AWG38 |
| Spatial Resolution | Vertical:1.0mm, Horizontal:1.0mm |
| Steel Penetration | Typical 35mm (±2mm) |
| Resolution of Organic Matter | 1-120mm |
| Gray Scale and Mixture Resolution | 1-40mm |
| Resolution of Inorganic Objects | 1-60mm |
| X-Ray Dosage Each Inspection | ≤4.5μSv (uGy) |
| Boundary Leakage | ≤1.0μSv /h(uGy/h) |
| S/N Ratio | <60dB |
| Conveyor Speed | 0.2m/s |
| Conveyor Max Load | 170kg |
| Power Consumption | 0.5K W |
| Leakage Current | ≤5.0mA |
| Film Safety | Guarantee ASA/ISO1600 |
| Weight | 450kg |
| Operation Temperature/Humidity | -5°C-55°C / 0%-95% |
| Storage Temperature/Humidity | -5°C-55°C /10%-90% |
| Atmospheric Pressure | 86kPa-106kPa AC |
| Operation Power | 220V(±10%-15%) 50±3Hz |
| Operation System | LINUX |

Configuration

| | |
|-----------------|---|
| X-Ray Generator | 160 K V, oil cooling, from bottom to top |
| Electric Roller | DC |
| Operating | Linux system, HDD 2TB, Optical Mouse, 2G memory, 8G storage, Networking Facility. |
| Monitor | 21" LED screen, resolution: 1920*1080 pixels |



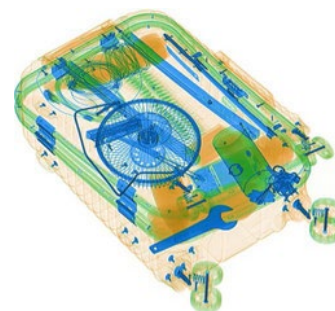
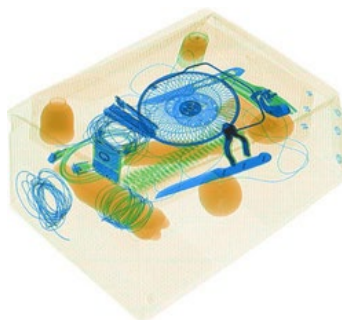
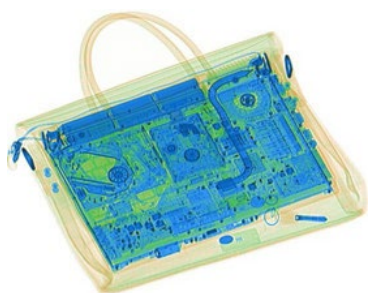


| Software Function | |
|-----------------------|---|
| Power-On Self-Test | The function of fault self-check automatically judges the fault and prompts the fault code information in time.1-64 times enlargement continuity. |
| Image Processing | AI Based With the function of Color/ B W, negative, high/low penetration, organic /inorganic stripping, general enhancement, pseudo color, etc. |
| Image Recall | 30 preceding images are recallable. |
| Images Storage | Up to 10,000 images automatic storage. |
| Real-Time Curve | The real-time curve can be used to detect whether the acquisition system and components work normally. |
| Time Setting | System time can be set manually. |
| Probe Setting | It can realize the manual deletion of the low and low energy detection board dead pixels, and display the deleted dead pixels in the display area. |
| Ray Source Setting | There are two source and analog source control modes, the source parameters of the digital source can be set. |
| Alarm System | The alarm function can be activated and deactivated, the alarm type of the alarm box sound and light alarm can be selected, and the sensitivity, minimum absorption rate, the maximum absorption rate, and alarm duration can be set. |
| Trouble Shooting | It can realize whether the components such as the entrance and exit light barrier, side panel switch, emergency stop switch and light source are normal, and display the standard value and the current value of the detection voltage. |
| Image Setting | The drum running control direction and the image display moving direction can be set. |
| Software Registration | It can realize software registration functions and has a serial number, registration code, registration status and system time information display. |
| User Login | Log in by entering different user names and passwords, only when logging in can you make other settings. |
| Software Registration | It can realize software registration functions and has a serial number, registration code, registration status and system time information display. |
| User Management | You can add, delete, edit the user name and password, and set the user level to restore the deleted user. |

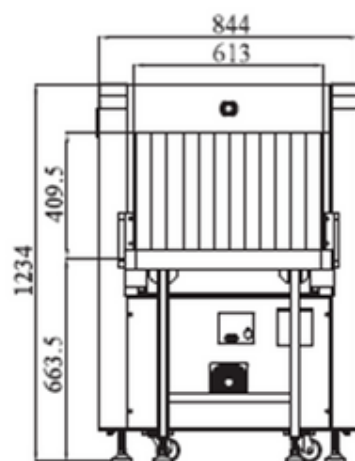
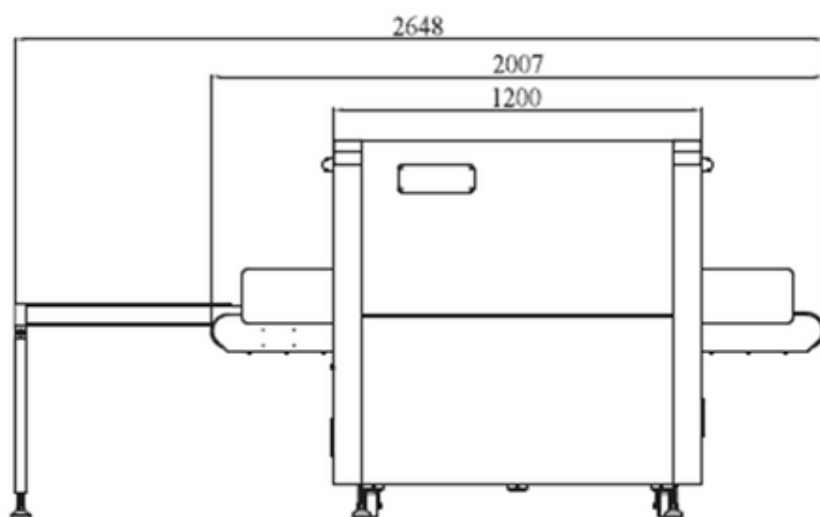


| | |
|--------------------------|--|
| Language | English. |
| About | The version and device number can be displayed. |
| TIP Report | The report can be generated by the tip operation after the tip insertion function is turned on, and the content of the report: user name, number of tip insertions, number of tags, false-positive rate, probability of detection, probability of false positives. |
| Tip Management | It can be set to enable and disable the insertion of dangerous goods, and can set the identification time, Prompt time, insertion frequency, proportion of single items inserted into dangerous goods, add tip files and delete files. |
| Document Management | It can query, open, and export the checked image. |
| Function Setting | It can set log level, save the file time, whether to open the training function and set the smart roller. |
| Data Setting | Display system working hours, the total working hours of the ray source, the total number of system baggage and packages, and the total number of baggage packages this time, and clear the above data. |
| System Parameter Setting | It can select the exported data, pictures, and backup directory, select and adjust the motor type, detector type, whether to enable the debug mode, model, and gain, enter the corresponding IP address on the network connection to realize sharing function and have corresponding software to achieve system upgrade. |

Scanned Image



Dimension Drawing



Head Office : D-162, Okhla Industrial Area Phase I,
New Delhi, 110020.



Regional Office : Mumbai, Bengaluru, Ahmedabad,
Chennai, Kolkata.

International Office : Dubai



Phone : +91-95999-53923



Sales : sales@timewatchindia.com



Support : helpdesk@timewatchindia.com

Disclaimer : All pictures shown are for illustration purposes only. The actual product and color may vary due to product enhancement. The brief specification is mentioned and may change without prior notice. Please consult us before placing any order.

