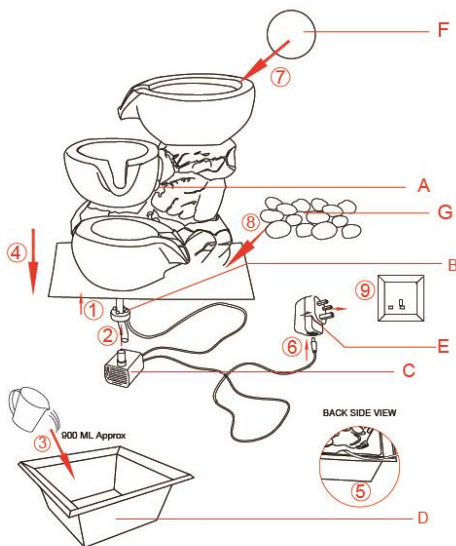


# GEEZY®

## Assembly Instructions for the Water fountain w/ LED Light Item: SS3161186

- Take the fountain out of the box.
- Take the LED light and place it on the tubing in the fountain (Step 1)
- Connect the pump to the tubing in the fountain (Step 2)
- Put water (900ML approx.) in the basin of the fountain (about ½ way full) take all cords and pump and place it in the water, be sure to make sure there is enough water in the bottom of the fountain so that the pump will be completely submersed. (Step 3)
- Put the assembled fountain on the basin (Step 4)
- Take the cord and place it in the groove that is cut out towards the back side of the fountain. (Step 5)
- Connect the adaptor to the pump cable. (Step 6)
- Put included glass ball on top of the fountain. (Step 7)
- Add included decorative rocks on the fountain. (Step 8)
- Plug the pump in and enjoy. (Step 9)



| Part | Description     | Quantity | Part | Description   | Quantity |
|------|-----------------|----------|------|---------------|----------|
| A    | Fountain Topper | 1 pc     | E    | Adaptor       | 1 pc     |
| B    | LED light       | 1 pc     | F    | Glass ball    | 1 pc     |
| C    | Water pump      | 1 pc     | G    | Pebble stones | 1 bag    |
| D    | Fountain base   | 1 pc     |      |               |          |



**NOTE:** Allow the pump power cord to hang at a lower level than the wall outlet to form a “drip loop”. This will help prevent water from dripping down the power cord and getting into the wall outlet. Be careful not to spill water onto the plug of the pump. DO NOT allow the pump to run dry!

WASTE BATTERIES AND ELECTRICAL PRODUCTS SHOULD NOT BE DISPOSED OF WITH HOUSEHOLD WASTE. PLS RECYCLE WHERE FACILITIES EXIST. CHECK WITH YOU LOCAL AUTHORITY OR RETAILER FOR RECYCLING ADVICE.



MADE IN CHINA