



# HUI Ā-IWI

---

NAU MAI, HAERE MAI!

10AM, RĀTAPU, 20 O NOEMA 2022

|

[WWW.TENEHEHENUI.IWI.NZ](http://WWW.TENEHEHENUI.IWI.NZ)

# HOUSE KEEPING

- Emergency exits
- Evacuation point
- Whareiti
- First aid responders
- Rāpihi & recycling

# AGENDA

- Mihi / House keeping
- Ngā Tohu
- Waihikurangi
- Ahuahu Group Limited
- Operations Update
- Grants Summary
- Settlement Overview
- Te Rangiwaituhi

# NGĀ TOHU: Te Nehenehenui



- Ranginui to the right
- Papatūānuku to the left
- The aqua and green lines signify the brand's connection to ecosystems, geographical pillars, our people of home and of the world.
- This modern interpretation of our past reflects the importance of unity and identity.

# NGĀ TOHU: Mākū e te rangi

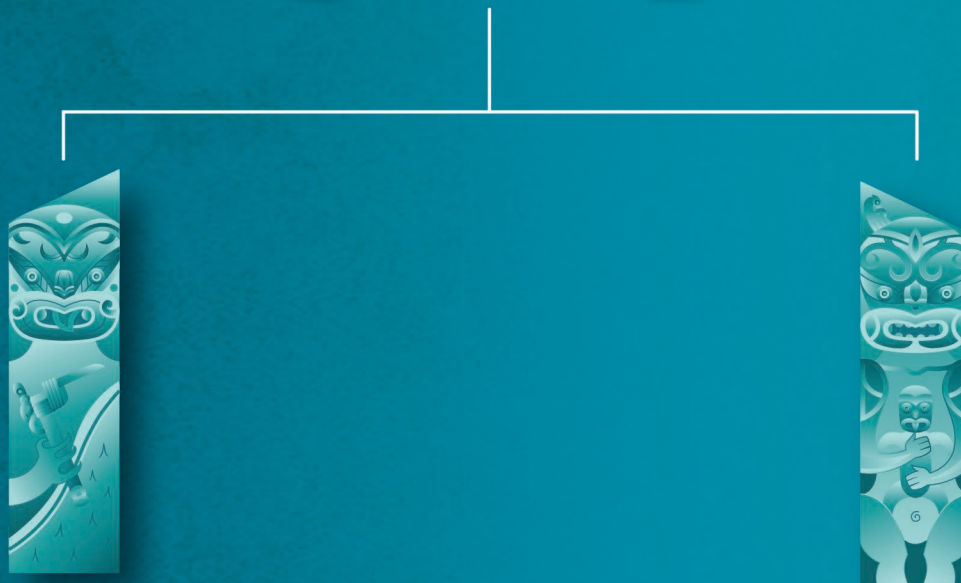


- Moisture from above
- Symbolises safeguarded knowledge
- Facial design traditionally reserved for rangatira (See Poupou o Maniapoto)
- Mark of authenticity or Tohu whaimana



# TE NEHENEHENUI

Post Settlement Governance Entity



**AHUAHU GROUP LIMITED**  
Commercial arm

**WAIHIKURANGI**  
Charitable arm

# WAIHIKURANGI

## Charitable arm

“Waihikurangi” acknowledges three landmarks of significance:

- Ōmarueke – the birthplace of Maniapoto.
- Hikurangi – former Pā of Rereahu.
- Rangiātea – an ancient wānanga and Pā, where Tūrongo and Māhina-a-rangi resided.





# AHUAHU GROUP LIMITED

## Commercial arm

“Ahuahu” is the traditional name for the settlement of Te Waitere, a small settlement located on the southern shores of Kāwhia Harbour. Ahuahu was known as a place of cultivation and international trades.

Ahuahu - Meaning to head up / earth up, symbolises the historical cultivation traditions of the region.



# TRUST DEED UPDATE

Complete

WIP

Establishment Trustee Requirements	Section	Actions	Completion Status
Management of the First election of Trustees	<b>Clause 3.2(a)</b>	During the Establishment Period, the Establishment Trustees must organise and manage the first election of Trustees as at the date of the first "annual general meeting in the first Income Year following the Settlement Date	<b>June-July 2023</b>
Establish a group structure and subsidiary entities	<b>Clause 3.2(d)</b>	During the Establishment Period, the Establishment Trustees must...in connection with the management of any funds or assets to be transferred to the Trust, take steps as reasonably required to establish or incorporate appropriate Trust Entities	<b>1-11-2022</b>
Transition from MMTB to TNN, wind up and transfer of assets from MMTB, MFT to TNN	<b>Clause 3.2(e)</b>	During the Establishment Period, the Establishment Trustees must...facilitate any necessary transitional steps relating to the wind-up of, and transfer of assets and responsibilities from, the Maniapoto Māori Trust Board and the Maniapoto Fisheries Trust	<b>05.08.2022</b>
Reporting to Iwi members	<b>Clause 3.2(g)</b>	During the Establishment Period, the Establishment Trustees must... to Maniapoto no later than six months after the signing of this Trust Deed on the steps taken by the Establishment Trustees in relation to the above establishment matters	<b>31-08-2022</b>
Appoint a Chief Executive	<b>Clause 10.1</b>	The Trustees may, on such terms as the Trustees determine, employ or contract a Chief Executive to manage the day to day administration of the Trust or the Maniapoto Group, including without limitation the implementation of the Trustees planning, reporting and monitoring obligations under this Deed (clause 10.1).	<b>22-09-2022</b>



# TRUST DEED UPDATE

Complete

WIP

Establishment Trustee Requirements	Section	Actions	Completion Status
Appoint and remove directors	<b>Clause 11.3(a)</b>	The Trustees shall ensure that: (a) Trust Entities are established on terms that ensure that the Trustees have the power to appoint and remove the directors, trustees or board members, including as the case may be of any Trust Entity	1-Nov 2022
Preparation of Annual Plan	<b>Clause 14.1</b>	the Trustees shall, no later than one (1) month before the commencement of each Income Year, prepare an Annual Plan that specifies information in respect of that Income Year including	01-03-2023
Preparation of 5 Year Strategy	<b>Clause 14.2</b>	The Trustees shall also produce, within 18 months following the signing of this Deed, a Five-Year Strategic Plan	31-05-2023
Preparation of Annual Report	<b>Clause 15.1</b>	The Trust must, within five (5) months after the end of each Financial Year and no later than 20 Business Days prior to an annual general meeting or as determined by the Trustees as they see fit, cause to be prepared an Annual Report on the affairs of the Trust and any Trust Entities covering the accounting period ending at the end of that Financial Year which includes	03.09.2022
			August 2023
Requirement to ensure appropriate reporting	<b>Clause 16.1</b>	The Trustees shall procure that each Trust Entity will: (a) within four (4) months of the establishment of the Trust Entity, prepare a Statement of Intent setting out its long-term objectives and the general principles by which it proposes to operate	28-02-2023

# GOVERNANCE UPDATE

Role	Recruitment Type	Ad Date	Start Date
Establishment Director	Seek.co.nz (via recruitment agency)	20.02.22	19.05.2022
GIC Chair	Facebook, Website, Seek	26.04.2022	27.06.2022
ARC Chair	Facebook, Website, Seek	26.04.2022	27.06.2022
ARC Member	Facebook, Website, Seek	26.04.2022	27.06.2022
P&RC Chair	Direct Appoint from MMTB CE Committee role to TNN role	N/A	27.06.2022

# OPERATIONS UPDATE: POU MANIAPOTO



—AWARDS—

Ngāti Maniapoto me ōna hapū maha

- 40 online nominations
- Panel of 4 voluntary Judges to determine 25 recipients as well as the recipient for the Te Rangituataka Supreme Award
- Introduce 6 Te Rōpū Whakahaere Noble Medals to the ceremony

## CULTURAL WORKSHOPS & SITE VISITS

- 7 site visits for Kaimahi and local schools to sites of significance
- Weekly cultural workshops held for kaimahi in preparation for the 3rd reading
- A minimum of 4 cultural workshops and site visits were completed in August this year

**TUNE IN LIVE!**

**6PM, PARAIRE, 2 O TĪHEMA 2022**



# OPERATIONS UPDATE: POU MATARAU - COVID Response

**2000+**

POSITIVE CASES MANAGED

**645+**

DELIVERIES TO  
HOUSEHOLDS

**2000+**

WHĀNAU MEMBERS  
SUPPORTED

**5000+**

CALLS FOR DAILY HEALTH  
CHECKS - ISOLATION CASES

# OPERATIONS UPDATE: POU MATARAU - COVID Response

For whānau who may be struggling  
or in need of urgent assistance  
due to COVID, please call

**0800 PUTIKI**  
(0800 788 454)



*Here to help ☺*





# OPERATIONS UPDATE: POU TAIAO

## RESOURCE CONSENT APPLICATIONS

Provided support to Mana Whenua/RMC's across a number of resource consent applications

Mana Whenua RMA toolbox in progress

## CAPACITY & CAPABILITY TRAINING + ENGAGEMENT HUI

Te Mana Taiao Advisory Group hui held bi-monthly

Maniapoto Iwi Environmental Management Plan (EMP) training and RMA 101 workshops held

## JOINT MANAGEMENT AGREEMENT (5 COUNCILS)

- 1x co-governance hui held
- 2x operational hui held  
(As per JMA agreement)

## TAIAO PROJECTS

Waikato River Authority Funded Projects(2):

- Maniapoto CAF project
- Waipā Oxbows project

Taonga Register GIS project  
– review of current GIS system

## MINISTERIAL ACCORDS

Participating in various Taiao reform processes:

- RM reforms
- Three Waters

Maniapoto rangatahi appointed to Waikato River Iwi summer internship programme at Ministry for the Environment

Continued engagement with various Govt agencies i.e. TPK, DOC, DIA, MfE, MBIE, MPI



# OPERATIONS UPDATE: NGĀ KAIMAHI

Role	Recruitment Type	Ad Date	Start Date
Corporate Services Manager	Internal – Expressions of interest	30.06.2022	05.08.2022
Executive Assistant	Seek.co.nz	04.08.2022	04.09.2022
Chief Financial Officer	Seek.co.nz	27.07.2022	01.02.2022
Pou Tahua	Seek.co.nz	22.07.2022	09.01.2023
Kai mahi x 48	Royal Ascent (Includes Establishment Director transition to Group CE)	N/A	28.09.2022
General Manager - Waihikurangi	Seek.co.nz (via recruitment agency) & TNN platforms	OPEN - 20.11.2022	(2023)

# OPERATIONS UPDATE: GRANTS SUMMARY (as at November 2022)



Category one  
**\$ 106,041.47**

## EDUCATION

- **EARLY CHILDHOOD**  
\$ 4,575.00
- **PRIMARY**  
\$ 29,928.32
- **SECONDARY**  
\$ 32,168.64
- **CERT/DIPLOMA**  
\$ 9,488.94
- **BACHELOR**  
\$ 16,380.57
- **POST GRAD**  
\$ 2,000.00
- **MASTERS**  
\$ 9,500.00
- **SCHOLARSHIP**  
\$ 2,000.00



Category two  
**\$ 181,479.37**

## EVENTS & GROUPS

- **MANIAPOTO MARAE**  
\$ 24,000.00
- **MANIAPOTO KAPAHAKA**  
\$ 2,750.00
- **MĀORI WARDENS**  
\$ 6,000.00
- **RANGATAHI**  
\$ 3,700.00
- **DISCRETIONARY**  
\$ 55,920.35
- **KAUMĀTUA KAUNIHĒRA**  
\$ 8,000.00
- **RMC GRANTS**  
\$ 80,000.00\*
- **KINGITANGA / KORONEIHANA**  
\$ 1,109.02



Category three  
**\$ 19,200.00**

- **MANIAPOTO SPORT**  
\$ 9,000.00
- **CULTURAL (GROUPS)**  
\$ 9,600.00
- **HEALTH (GROUPS)**  
\$ 600.00

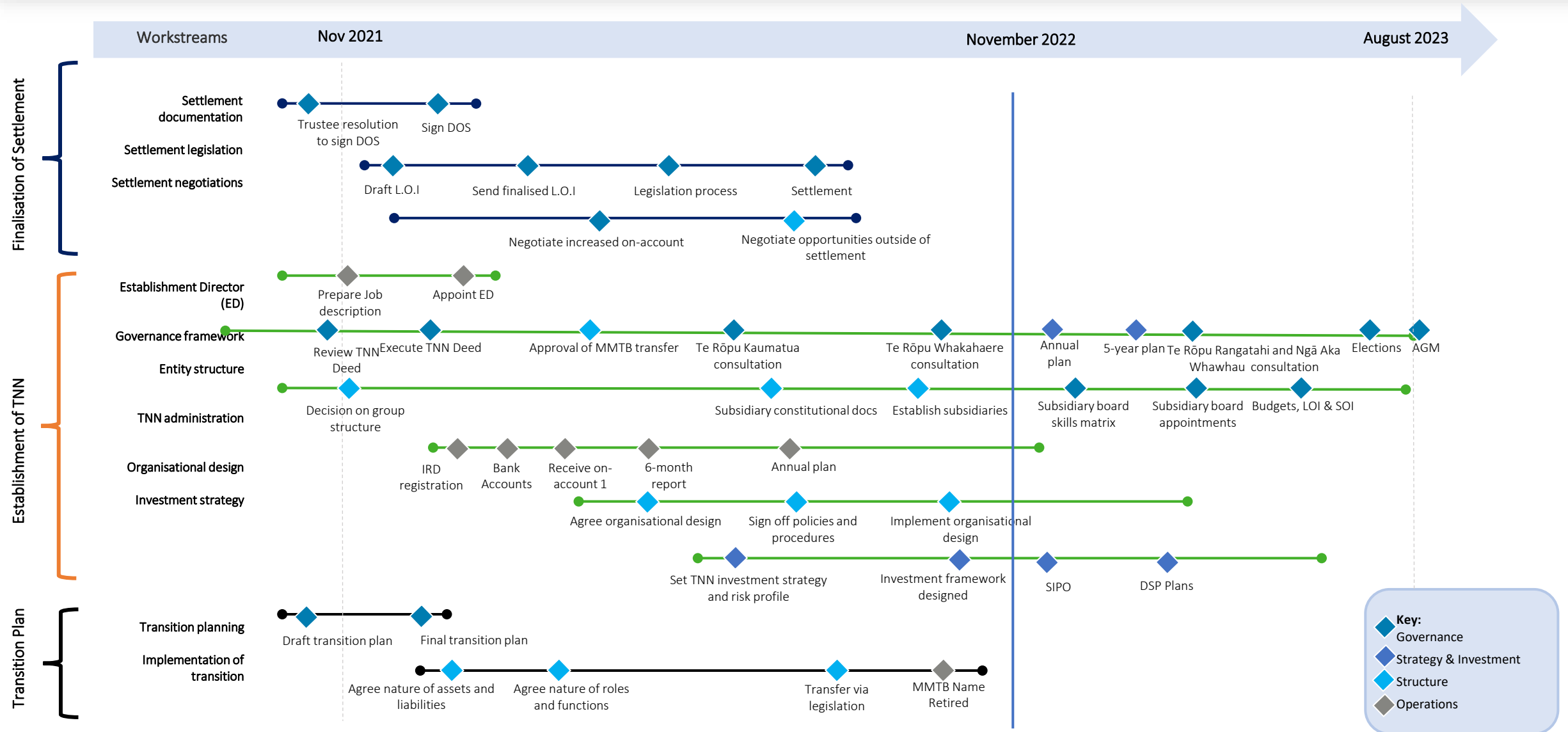
**TOTAL PAID** \$ 306,720.84

**ROLLOVER** \$ 62,903.16

**TOTAL ALLOCATION** \$ 369,624.00

\*\$32K 2021-22 FY / \$48K PRIOR PERIOD ACCRUALS

# TE NEHENEHENUI: Transition road map





# SETTLEMENT OVERVIEW:

## DEED OF SETTLEMENT: Summary

- **Historical Redress:**

- Historical Account
- Crown Acknowledgements
- Crown Apology

- **Raurunui:** Cultural Redress

- 36 significant sites

- **Tahuarua Me Te Paepaekura:**

Commercial and Financial Redress

- \$165M + Interest





# SETTLEMENT OVERVIEW:

## OTHER MATTERS

- Kāwhia Harbour Negotiations
  - Joint negotiation with Waikato-Tainui and the Crown. Collaboration with Waikato-Tainui working well, under our Oati.
  - Aspirations tabled at negotiation's hui of 13 October.
  - Negotiation timelines to be confirmed
- Return of Ōrākau battle site
  - Te Arawhiti to confirm funding
  - Wānanga to be arranged in new year



# TE RANGIWAITUHI

## MANIAPOTO DEED OF SETTLEMENT CEREMONY

- Approximately **3000** guests and whanau are anticipated to attend this historical day. More than 200 will be voluntary personnel who currently meet each week to plan and rehearse waiata.
- Set up at Te Kūiti Pā will commence at 8.00pm Saturday 3rd of December before a 5.30am start until pack down at 1.30pm on Sunday 4th of December.
- Invitations have been issued to more than **100** dignitaries and more than **900** online registrations have confirmed attendance.



TE RANGIWAITUHI

04 · 12 · 22

KEI: TE KŪITI PĀ



# TE RANGIWAITUHI: ORDER OF PROCEEDINGS (Overview)

Sunday	Details
6.00am	Arrival for Temperature Tests & RAT kits for Self-Testing
6.30am	Shuttle service
7.00am	Raising of Flags (Manawa & Kawenata), Pānui opportunity, Parakuihi
7.40am	Paepae – Kaikōrero and Kaikaranga ready to receive Invited guests
8.00am	Pōwhiri 1: Invited Guests
	Morning Tea
8.45am	Overview of proceedings
8.50am	Pōwhiri Rehearsal
9.30am	Te Puhi Ariki (Ngā Wai Hono i te Pō) and entourage join Mahau officials
9.55am	Pōwhiri – Prime minister & Crown officials
10.05am	Crown officials and Matua Pōwhiri are seated
	Karakia & Mihimihi commence

Sunday	Details
11.05am	Karakia whakakapi i ngā mihimihi
	Rt Hon. Jacinda Adern speaks and presents crown gift, followed by Waiata Tautoko
	TNN Tiatāngata Bella Takiari-Brame speaks and presents TNN Gift, followed by Waiata Tautoko
11.35am	Prime Minister signs Deed of Settlement
11.40am	Unveiling of Monument inscription
11.45am	Hariru / Waiata
11.55am	Parikai / Pao
12.00pm	Karakia for Parikai
	Entertainment me he kōrero nā te Rangatahi
12.45pm	Karakia Whakamutunga

# Next steps

- •  
● **END OF FINANCIAL YEAR**  
*31.03.2023*  
•  
•  
•
- **ELECTION HUI** - Supporting Ngā Kura Tau  
*DECEMBER*  
•  
•  
•
- **ELECTIONS** - RFP for independent election provider  
*FEBRUARY*  
•  
•  
•
- **SIPO** - Strategic Investment Portfolio Objectives  
*MARCH - APRIL*  
•  
•  
•
- **5 YEAR STRATEGY + 2050 GOALS**  
*APRIL - MAY*

- •  
● **NGĀ KURA TAU CONSULTATION**  
*DECEMBER - MARCH*  
•  
•  
•
- **NGĀ KURA RERE CONSULTATION**  
*FEBRUARY - MAY*  
•  
•  
•
- **STRATEGY ROAD SHOW**  
*JUNE - JULY*  
•  
•  
•
- **ELECTION DATE**  
*JULY*  
•  
•  
•
- **HUI Ā-TAU**  
*AUGUST*







# HUI Ā-IWI

---

NGĀ MIHI!