



# HUI Ā-IWI

RŪPEKE MAI E NGĀ HAPŪ MAHA

Te Kauae Marae | 23 o HUNE 2024

- Karakia / tikanga ā-whare
- **Tā te tiamana** - Chair update
  - Governance appointments
- **Te Rautaki** - Strategy
  - Waihikurangi
  - Ahuahu
- **Ngā Whakahaerenga** - Operations update
  - Rangatahi Pilot project
- Pātai
- Upcoming kaupapa
- Kai o te rānui



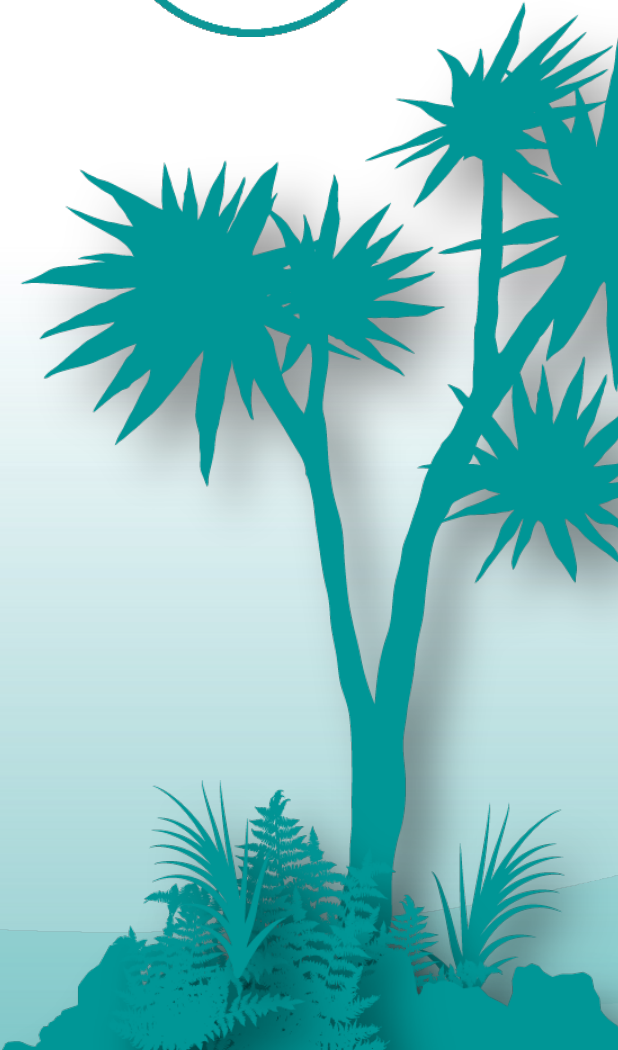
## TIKANGA Ā-WHARE HOUSEKEEPING

Emergency exits

Evacuation point

Whareiti

First aid  
responders



# TĀ TE TIAMANA

---

CHAIR UPDATE



# GOVERNANCE APPOINTMENTS



**Dean Nikora**  
*Ahuahu Group Limited*



**Hohepa Rauputu**  
*Ahuahu Group Limited*



**Dave Letele**  
*Waihikurangi Trust*



**Nanaia Mahuta**  
*Ahuahu Group Limited*



**Tyler Paki**  
*Intern Trustee*



**Paula Baker**  
*Waihikurangi Trust*

# TE RAUTAKI

---

## STRATEGY



# TE NEHENEHENUI



HAUORA



AKANUI



WHANAKE



TAIAO



MĀTAURANGA



TURE



KOTAHITANGA



WHAKAPONO



AROHA



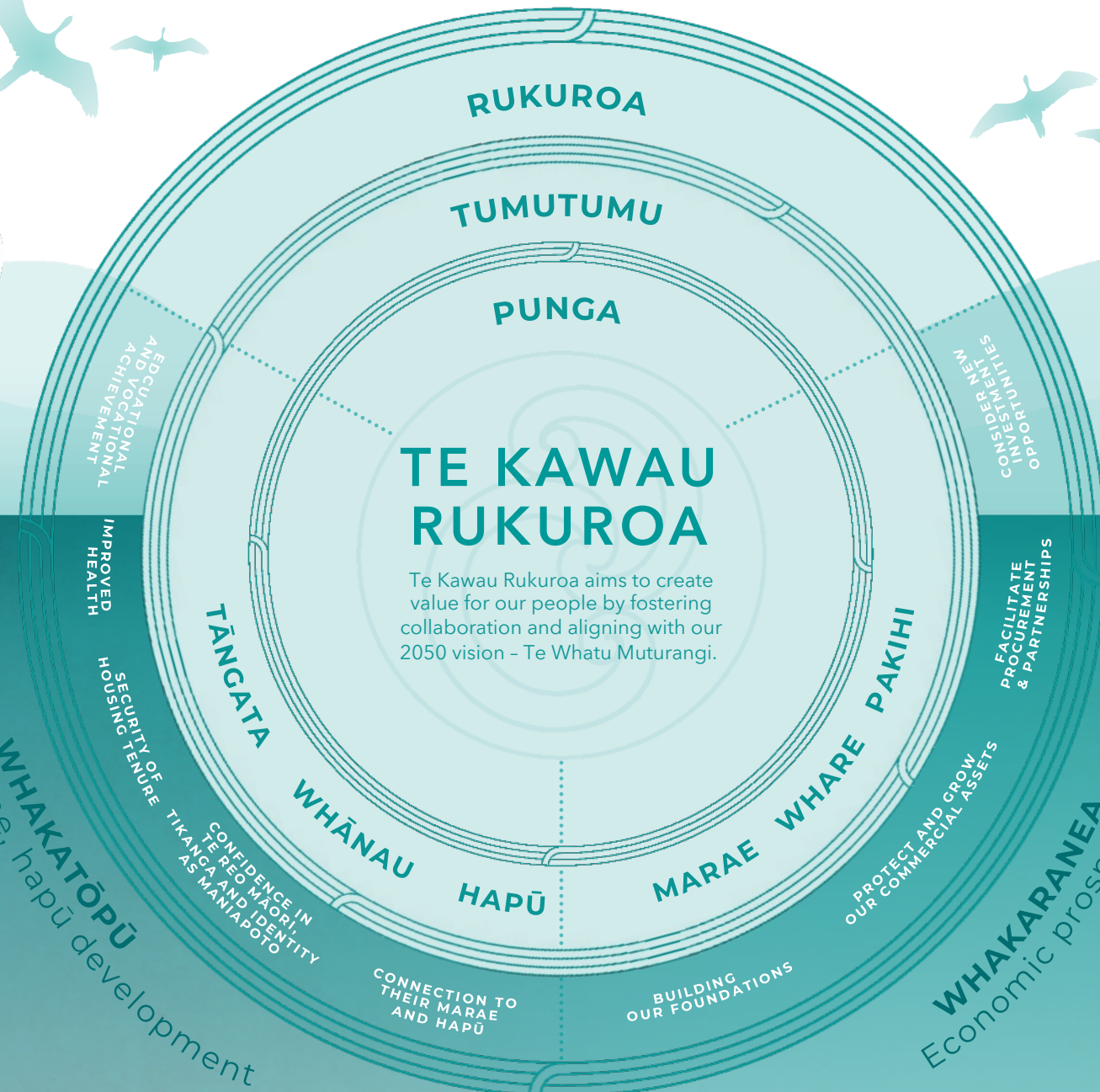
MĀORITANGA

## WAIHIKURANGI

Waihikurangi, the birthplace and home for many of our tūpuna, abundant in the delicacies of the forest and lagoons. Waihikurangi Trust is the charitable arm of Te Nehenehenui.

The role of Waihikurangi Trust is to support the social, community and cultural aspirations of the iwi on behalf of all within Te Nehenehenui.

Whānau, marae, hapū development  
**WHAKATŌPŪ**



## TE KAWAU RUKUROA

Te Kawau Rukuroa aims to create value for our people by fostering collaboration and aligning with our 2050 vision - Te Whatu Muterangi.

## AHUAHU

Ahuahu, the traditional name for the coastal village of Te Waitere, and a thriving settlement of cultivation and international trade; Ahuahu Group Limited is the commercial arm of Te Nehenehenui.

This entity has a focus on protecting and sustainably growing the pūtea and commercial assets of the iwi on behalf of all within Te Nehenehenui.

**WHAKARANEA**  
 Economic prosperity



AKANUI



MĀTAURANGA



TAIAO



HAUORA



WHANAKE



EDUCATIONAL AND VOCATIONAL ACHIEVEMENT

Governance



IMPROVED HEALTH

Data & Insights



SECURITY OF HOUSING TENURE

Strategy



CONFIDENCE IN TE REO MĀORI, TIKANGA, AND IDENTITY AS MANIAPOTO

Structure



CONNECTION TO THEIR MARAE AND HAPŪ

Investments



BUILDING OUR FOUNDATIONS

Develop, Implement, Evaluate



PROTECT AND GROW OUR COMMERCIAL ASSETS

Analyse, Manage, Invest



FACILITATE PROCUREMENT & PARTNERSHIPS

Facilitate, Connect, Advocate



CONSIDER NEW INVESTMENT OPPORTUNITIES

Consider, Analyse, Co-invest

WAIHIKURANGI TRUST

AHUAHU GROUP LIMITED

# NGĀ WHAKAHAERENGA

---

OPERATIONS





# AKANUI



Maniapoto whānau are connected to their whenua and marae, and have strong relationships, identity and belonging

WHANAU

TRIBAL PLATFORM

TĒ RŌPŪ RANGATAHI

EVENTS

# MĀTAURANGA



Our Mātauranga Maniapoto is strengthened and applied to uplift our people

TAONGA

TE REO & TIKANGA

MĀTAURANGA MANIAPOTO

TE REO IRIRANGI O  
MANIAPOTO

# TAIAO



Protect, nourish and grow our environment to work towards an enhanced and protected taiao

PROJECTS

SETTLEMENT PROTECTION

CAPACITY/CAPABILITY

RELATIONSHIPS

# HAUORA



Building strong, vibrant and healthy whānau and communities. Equitable access to mainstream healthcare, mental health care, and rongoā Māori

FIRST AID COURSES

HAUORA STRATEGY

MĀTAURANGA MANIAPOTO

PARTNERSHIPS

# WHANAKE



Build Maniapoto for Maniapoto to lift the wellbeing of whānau, hapū and iwi

MARAE RESILIENCE

TE REO & TIKANGA

FINANCIAL LITERACY

INVESTMENTS

# AHUAHU GROUP LIMITED

## BUILDING OUR FOUNDATIONS



Develop and implement:

- Continuing induction of new Directors
- Enhancing our Pataka Kai process
- Completed FY25 budget and annual workplan
- Drafting strategic development framework v1
- Drafting Property & Infrastructure strategy v1
- Drafting AGL governance training plan
- FY24 year-end accounts and audit in progress

## PROTECT & GROW OUR COMMERCIAL ASSETS



Manage and invest in our assets:

- 3 x quota package analysis
- Assessing 8 x per specie lease options
- Attendance at AGM for Moana and Sealords
- Completed rental review process with CFGNZ
- Partake in FSC Forestry Stewardship Standard audit of forestry management practices
- Meeting with Forestry Management company to discuss forestry harvest plan for Pirongia.

## FACILITATE PROCUREMENT & PARTNERSHIP



Connecting with partners:

- 2 x engagements in this period with Maniapoto Business Entity and Trust
- Crown and Regional entities such as: MBIE, Kainga Ora, KiwiRail, Waipa Networks, Energy Commission (EECA)

## CONSIDER NEW INVESTMENT OPPORTUNITIES



Analyse new investments:

- Completed commercial assessment of 39 DSP properties
- Detailed DSP assessment of 5 x schools, 2 x farms, courthouse and police station
- Building and applying direct investment analysis tool in line with direct investment sub policy
- Considering 2 x in-region investment with Maniapoto entities
- TGH meeting to discuss strategic investment and partnerships
- Consider direct investment opportunities in 3 x PE funds and 2 x Totara Iwi Investment Collective

# WAIHIKURANGI

## EDUCATIONAL AND VOCATIONAL ACHIEVEMENT



### Governance

#### Strategy:

- Updating Waikahika, our education strategy, to align with Te Rautaki Reo o Maniapoto
- Developing a joint work programme with MOE and TEC

#### Learning practitioners

- Implementing PLD for teachers

#### Skills & Employment Pathways

- Market intelligence to identify work opportunities
- Data and insights driven

## IMPROVED HEALTH



### Data & Insights

#### Strategy:

- Maniapoto Hauora strategy is under development

#### Direct whānau support:

- Working with Maniapoto Marae Pact Trust to support whānau in-rohe
- AED, First-Aid, & Psychological first-aid courses

#### Oranga Taiao, Oranga Tangata

- 4 Mana Whenua Groups
- Rangatahi Taiao Wananga

## SECURITY OF HOUSING TENURE



### Connecting with partners:

#### Approach:

- Working alongside AGL and TNN to identify and provide long-term tenure opportunities

#### Whānau financial literacy

- Partnership with Westpac to offer financial literacy alongside whanau

#### Marae Solar

- Extension of solar initiative
- Partnership with TGL and WNL

## CONFIDENCE AND CONNECTION TO MANIAPOTO IDENTITY



### Structure and investments

#### Strategy:

- Review Rautaki Reo o Maniapoto alongside Waikahika

#### Te Reo Programmes

- Kuratahi - enrolments are now open

#### Te Reo Irirangi o Maniapoto

- Events
- Marae series

#### Marae and community resilience

# WAIHIKURANGI



# NGĀ KAIMAHI



RECRUITMENT - NEW APPOINTMENTS

GM Operations and Communications

Grants Distributions and Tribal Register Manager

Senior Financial Accountant

Senior Advisor

Project Manager

Planner Lead

TOTAL OF 56  
KAIMAHI EMPLOYED



# RANGATAHI PILOT PROJECT

	MANGATOATO	MANGAPEEHI	MĀNIAROA
	<b>7-9 HŪRAE 2023</b>	<b>13-15 OKETOPA 2023</b>	<b>16-18 PEPUERE 2024</b>
Key focus	Kotahitanga as taiohi	Marae tikanga - Being involved	Engaging with our tribe, the people and PSGE activities
	Connecting to our tribe, kōrero tuku iho, and the practices of our tūpuna	Haerenga to wāhi tapu - Te Hape Marae, Miringa Te Kakara & Pekepeke (Waipā Awa)	Hui ā-Tau
	Maniapototanga - The importance of applying activities such as learning your whakapapa, reciting karakia and waiata and participating in Marae kōmiti hui to activate your Maniapoto identity.	Being active and comfortable on Marae	Terms of Reference
		What steps have been taken to activating your Maniapoto identity	Next steps
Activities	Maurākau - Leadership, games & history	Te Rongorito Wānanga - The migration of our tūpuna stories and strength of wahine	Wānanga with AGL GM, Group CEO & TNN Chair
	Haerenga to site of significance (Te lakau)	Engagement with Māori leaders	Activating and applying their Maniapoto Identity
	Kapa Haka - Learning waiata unique to our tribe, to encourage and provide taiohi the tools to participate in future tribal gatherings	First homeownership workshop	Rongoā Māori
	Presentation of Five-year plan	Future planning - Te Rōpū Rangatahi	Mahoenui - Te Kawenata o Ngāti Maniapoto me ōna hapū maha
	Strategic thinking / problem solving	Haerenga to Te Hape Marae, Te Miringa Te Kakara, Pureora-o-Kahu & Pekapeka	Haerenga to Mōkau Awa, Māhoenui and Awakino Awa



# NGĀ MANU TAKI ATA

## TE RŌPŪ RANGATAHI

**Manu** = the youth

**Taki** = to lead, to move as a collective movement

**Ata** = dawn, morning = a new day

---

“The name in full, expresses the promise of a new morning that is awoken and stirred by this flock of young birds as they move, sing, fly and explore, giving energy to their own flight and the flight of others around them.”

- Te Makau Poutokonuiarangi

Over the series of wānanga, the rangatahi were given the opportunity to provide recommendations on the name of the group.

The last wānanga instilled a message within them - Being that they are a kāhui of manu in flight. The name was gifted by Te Makau Poutokonuiarangi, it was unanimously agreed as the name, approved by the Group CEO and karakia was conducted by Pou Karakia o Kakepuku member, to clear and prepare the path ahead of the rōpū.

# NGĀ MANU TAKI ATA

## TE RŌPŪ RANGATAHI

CHAIR



**Nadine Uerata**  
*Ngāti Kiriwai, Ngāti Ngutu*

DEPUTY CHAIR



**Ariāhuia Te Ruki**  
*Ngāti Unu, Ngāti Kahu*

SECRETARY



**Soltice Morrison**  
*Ngāti Rereahu-Maniapoto*

TREASURER



**Gavin William Tinrorau Barr**  
*Ngāti Uekaha, Ngāti Urunumia,  
Ngāti Unu, Ngāti Kahu*



**Atareta Greeks**  
*Ngāti Rōrā*



**Ciccone Hakaraia-Turner**  
*Ngāti Parekaitini, Ngāti Rōrā*



**Matai Wetere**  
*Ngāti Maniapoto, Ngāti Hikairo*



**Marcel Kapara**  
*Ngāti Waikorara, Ngāti Waiora*



**Miro Muriel Harré**  
*Ngāti Rōrā*



**Tia huia Kawe Roes Wehi**  
*Rereahu Maniapoto  
Ngaati Maru*



**Xavier Turner**  
*Ngāti Rōrā, Ngāti Waiora,  
Ngāti Paretekawa*



# Grants & Distributions – 12 Months to May 2024

GRANT CATEGORY	No. of applications	Total Amount
<b>EDUCATION</b> Early Childcare through to Tertiary, including Vocational education pathways and Scholarships	1,154	\$169,152
<b>HEALTH &amp; WELLBEING</b> Kaumātua, Rangatahi and Pakeke health grants, Māori Wardens, Maniapoto Sports Events	744	\$206,982
<b>CULTURAL</b> Kapahaka, Te Reo, Kīngitanga, Wānanga, Taiao	25	\$111,220
<b>PROSPERITY</b> Support for Ngā Whare o Te Nehenehenui, Advisory Rōpū (Kaumātua, Rangatahi, Ngā Aka Whawhau), Marae, Pātaka	37	\$316,890
Total as at 31 May 2024	1,960	\$804,244

## GRANTS OPEN!

Head to our website to apply

[www.tenehenehenui.iwi.nz/grants](http://www.tenehenehenui.iwi.nz/grants)

**KĀKAHO:** Maniapoto Membership Register

Number of registered members:

 **30,622**

as at Pepuere (February) 2024,  
an increase of **573 (2%)**

**30,049**

as at Pepuere (February) 2024



HE PĀTAI?

---



# UPCOMING EVENTS



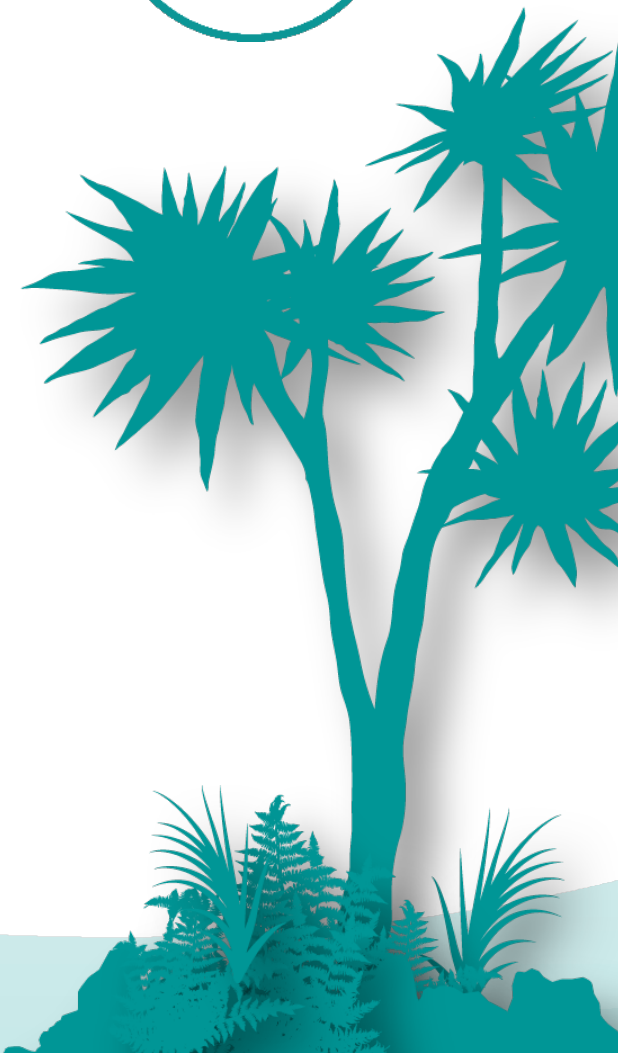
TE PŌTUTANGANUI O PIPIRI

MATARIKI

KURATAHI

KORONEIHANA

HUI Ā-TAU





# HUI Ā-IWI

---

KIA ORA KATOA!