

and intensify the brilliance of the color.
 have been added to protect the hair
Rice oil and refractive silicones
 remains as a subtle nuance.
 New fragrance, **floral scent**,
 Softer cream, **easy mix, easy application**,
colors & reconstructs at the same time!
 Exciting new formulation, Rhol Color
 and integrity of hair:
 its formula protects the natural structure
 and **ceramides**,
 Based on **natural herbal extracts**
 reverting to original color,
 Rhol Color fades gradually,

rhôl® color

rhôl® color

Rhol Color is a coloring treatment tone on tone - with no ammonia and no lifting

color guided by nature



Ceramides
 > Combine with the natural structure of the hair to reinforce it.
 Result: added body, more elasticity and strength.
Rice Oil
 > Rich in gamma-oryzanol, acts as a natural anti oxidant,
 preventing against split ends. Hydrates, moisturizes,
 Absorbs UV radiations and protects the hair color.
Specific Silicones
 > Intensify the brilliance of color.
Natural Herbal Extracts
 Rhol Color does not irritate nor burn the scalp.
 > **horseail**: increases elasticity
 > **alpine yarrow**: protects scalp and skin
 > **coltsfoot**: soothing emollient
 > **birch**: hair restorative & normalizer
 > **rosemary**: purifier, stimulant & normalizer
 > **sage**: invigorates and soothes the scalp
 > **nettle**: creates longer, lasting shine

> Rhol Clear is an extraordinary "shine service", it can be used to manipulate the tone intensity of any Rhol Color as a shine service or topical glaze.

> Rhol Color features a vast selection of natural and fashion shades.
 Ideal for color shy clients, for coverage of first gray hair, as a toner, and as tone enhancement after highlights, it can also be used as a filler.

> Rhol Color features a vast selection of natural and fashion shades.



semi-permanent cream color treatment with herbal extracts

TOCCOMAGICO



COLOR SELECTION AND APPLICATION GUIDE

STARTING-BASE (NATURAL COLOR OF THE HAIR)									
nuances	1	3	4	5	6	7	8	9	9
	BLACK	DARK CHESTNUT	CHESTNUT	LIGHT CHESTNUT	DARK BLOND	BLOND	LIGHT BLOND	LIGHTEST BLOND	
natural magic									
4N chestnut			●	●					
5N light chestnut			●	●					
6N dark blond				●	●	●			
7N blond					●	●	●		
8N light blond						●	●	●	
golden harmonies									
6D golden underbrush				●	●	●			
7D mediterranean gold				●	●	●			
8D golden lake					●	●	●	●	
9D golden wheat						●	●	●	
sand fantasies									
7MS mallorca sand				●	●	●			
9MS mediterranean sand					●	●	●	●	
elegant browns									
4MM chocolate		●	●						
5,5MM toffee			●	●	●	●			
6MM coffee			●	●	●	●			
7MM hazelnut				●	●	●	●		
7,5MM cinnamon				●	●	●	●	●	
copper symphonies									
6R antique copper				●	●				
8R bright copper					●	●	●	●	
9R light copper						●	●	●	●
5DR shades of fall				●	●				
6DR golden red cloud				●	●	●			
7DR wheatfield at sunset					●	●	●		
red symphonies									
4SR red dusk				●	●				
5SR mahogany grains				●	●	●			
6SR garnet					●	●	●		
7SR volterra red						●	●	●	
red fantasies									
4MR passionfruit				●	●	●			
6MR red chestnut					●	●	●		
6,5MR red sunset						●	●	●	
9MR volcano red							●	●	●
midnight ebonies									
1N ebony black	●	●	●						
1NB mediterranean night	●	●	●	●					
1NV violet black	●	●	●	●					

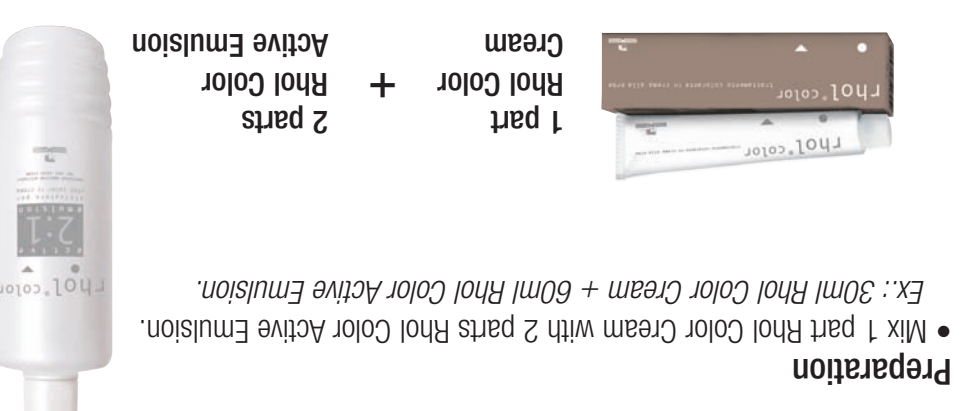
Tocco Magico S.p.A. Via dei Monti Tiburtini, 770 - 00157 Rome (Italy) Tel: +39.06.43.200.1 - Fax: +39.06.439.38.74 www.toccomagico.it

TOCCOMAGICO

Tocco Magico Trichological Cosmetic Laboratories Inc. 1010 Northern Boulevard - Suite #208 - Great Neck, NY - 11021 USA Toll free number: 1-800-838-9944

Method of use
 Perform a patch test. Shampoo and towel dry hair. Apply barrier cream around the entire hairline. Divide the hair into four sections.
 For virgin application, apply the color with a flat brush on 1/4" partings approximately 1/4 to 1/2 inch from the scalp area and through the mid-shaft and ends, then follow on the scalp area.
 For retouch application, apply color onto re-growth only if there is a line of demarcation, otherwise from scalp to end.
 The color can be brought onto the mid-shaft and ends emulsifying the product during the last 5 minutes of the processing time to refreshing the color.
Processing time
 Approximately: 20-30 minutes.
 After a perm or lightener service: 10-15 minutes.
 Processing time may vary slightly depending on the individual, the texture of hair, and the intensity of the desired result.
 After the color processing time is complete, simply add warm water to color and emulsify into a lather. Rinse thoroughly and follow with a povidone-iodine treatment as your post chemical service.
 In some cases an additional gentle shampoo may be desired.

Preparation
 • Mix 1 part Rhol Color Cream with 2 parts Rhol Color Active Emission.
 Ex.: 30ml Rhol Color Cream + 60ml Rhol Color Active Emission.
 • Rhol Clear only: mix with water for ease of placement and consistency.
 • Rhol Clear.
 Ex.: 30ml Rhol Color Cream + 60ml Rhol Color Active Emission + Rhol Clear.
 • With Rhol Clear mix 1 part Rhol Color Cream + 2 parts Rhol Color Active Emission + Rhol Clear.
 Ex.: 15ml natural base series + 15ml desired nuance + 60ml Rhol Color Active Emission.
 • For gray coverage, mix equal part of natural series and tonal series at desired level.
 Ex.: 15ml natural base series + 15ml desired nuance + 60ml Rhol Color Active Emission.



rhol® color

magie naturali <
> natural magic



4N
castano
chestnut

5N
castano chiaro
light chestnut

6N
biondo scuro
dark blond

7N
biondo
blond

8N
biondo chiaro
light blond



armonie dorate <
> golden harmonies

fantasie sabbia <
> sand fantasies

6D
sottobosco dorato
golden underbrush

7D
dorato mediterraneo
mediterranean gold

8D
lago dorato
golden lake

9D
grano dorato
golden wheat

7MS
sabbia di majorca
majorca sand

9MS
sabbia mediterranea
mediterranean sand



marroni eleganti <
> elegant browns

4MM
cioccolato
chocolate

5,5MM
caramello
toffee

6MM
caffè
coffee

7MM
noccia
hazelnut

7,5MM
cannella
cinnamon



sinfonie ramate <
> copper symphonies

6R
rame antico
antique copper

8R
rame luminoso
bright copper

9R
rame delicato
light copper

5DR
sfumature d'autunno
shades of fall

6DR
nube rossa dorata
golden red cloud

7DR
grano al tramonto
wheatfield at sunset



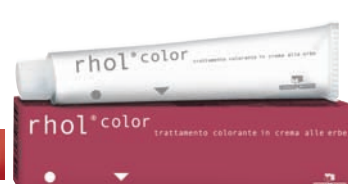
sinfonie rosse <
> red symphonies

4SR
penombra rossa
red dusk

5SR
venature mogano
mahogany grains

6SR
granato
garnet

7SR
rosso volterra
volterra red



fantasie rosse <
> red fantasies

neri profondi <
> midnight ebonies

4MR
frutto della passione
passionfruit

6MR
buccia di castagna
red chestnut

6,5MR
tramonto rosso
red sunset

9MR
rosso vulcano
volcano red

1N
nero ebano
ebony black

1NB
notte mediterranea
mediterranean night

1NV
nero violino
violet black



rhol® color



> Rhol Color
semi-permanent cream color treatment
with herbal extracts



- > 60 ml tube
- > 33 nuances all intermixable
- > 5 new color-coded boxes

> Rhol Color
Active Emulsion

- > 1000 ml bottle
- > 120 ml bottle



> Rhol Clear
"shine service"

- > 60 ml tube

