



Revolutionary + Proven

The History of Reverse

enovis™

Scan to watch



**2003**

First patient in IDE



**2005**

RSP® 510K Cleared



In 2005, the RSP® revolutionized the reverse shoulder design by being the first system to offer glenospheres with a lateralized center of rotation. Today, we're continuing to lead the way, with options along a continuum from the simple primary to the complex revision case.

2010

RSP® Monoblock



**2015**

AltiVate Reverse®

**2017**

10-year data on the IDE patient series showed >90% survivorship with no decline in patient outcomes<sup>1</sup>




2018

AltiVate Reverse®  
Small Shell



2019

AltiVate Reverse®  
Short Stem

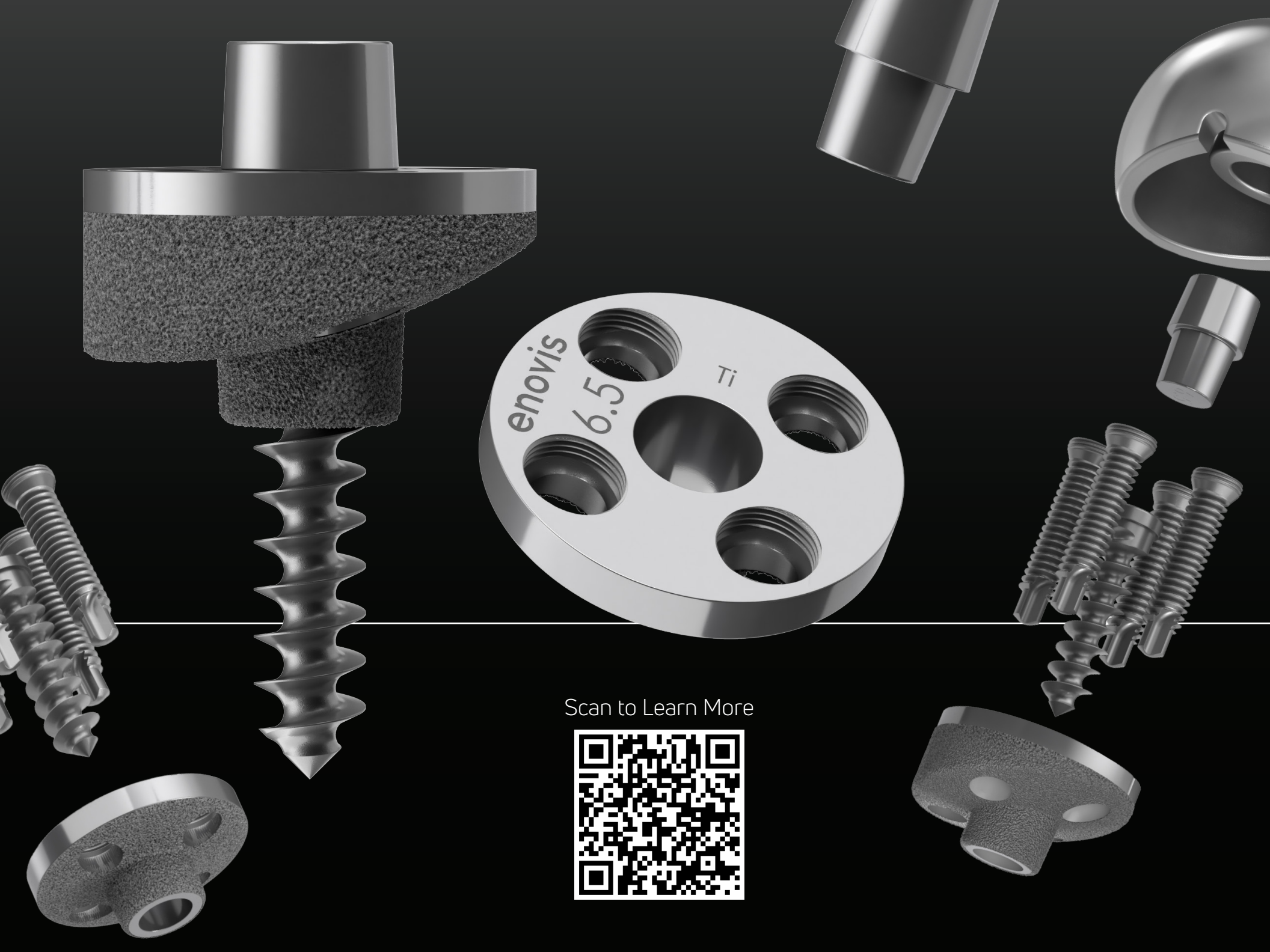
The image displays various components of the AltiVate Reverse Glenoid System against a dark background. In the upper left, three screws of different lengths and diameters are shown. In the upper center, a long, textured cylindrical component is visible. To its right is a large, polished, hemispherical glenosphere. On the right side, there is a smaller cylindrical component and another screw. In the lower left, a long, thin screw with a sharp, pointed tip is shown. The text is centered in the middle of the image.

One system, expanded solutions. Introducing our AltiVate Reverse® Glenoid System, which incorporates the central screw fixation and lateralization of the RSP® Glenoid System and adds modularity to provide options for a wider variety of patients. Our multiple central screw lengths and diameters offer more flexibility, while the 15 degree wedge provides a metallic augment in addition to bone grafting. With five baseplates, eleven glenospheres, and ten years of clinical follow-up<sup>1</sup> on our philosophy, the AltiVate Reverse® is one system to treat a broad spectrum of patients with varying anatomy.

**2024**

AltiVate Reverse®  
Glenoid





Scan to Learn More



+ *BEYOND*





# ARVIS® Shoulder

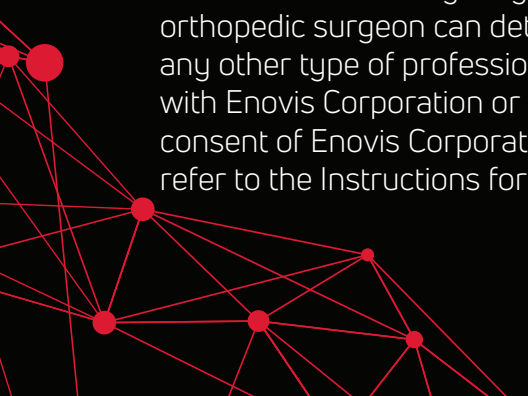




T 800.456.8696 D 512.832.9500 F 512.834.6300

Encore Medical, LP  
9800 Metric Blvd. | Austin, TX 78758 | U.S.A.  
[enovis.com/surgical](https://enovis.com/surgical)

Copyright © 2024 Encore Medical, LP  
MKT0031017-013 Rev A



Individual results may vary. Encore Medical, LP is a manufacturer of orthopedic implants and does not practice medicine. Only an orthopedic surgeon can determine what treatment is appropriate. The contents of this document do not constitute medical, legal, or any other type of professional advice. This material is intended for the sole use and benefit of the sales force and physicians affiliated with Enovis Corporation or any of its subsidiaries. It is not to be redistributed, duplicated, or disclosed without the express written consent of Enovis Corporation or any of its subsidiaries. For more information on risks, warnings, and possible adverse side effects refer to the Instructions for Use provided with the device.