

PORTABLE DIESEL GENSET (5kVA)



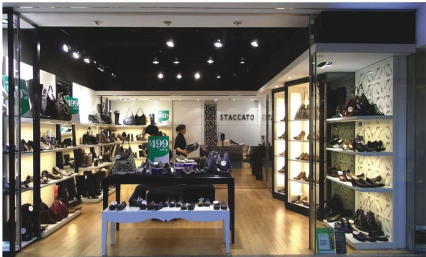
Compact Design | Large Fuel Tank | Available in Manual & AMF Configuration



Mahindra Powerol's Spectro series of portable genset is very convenient to use. It has sturdy wheels and long handle which allows easy mobility of the genset.

Along with being compact, it packs a powerful engine that gives a high genset power output.

It is Ideal for small offices, retail outlets, households, make shift shelters, small applications at off site infrastructure sites & any other small establishments.



DG SET SPECIFICATION	
	5 kVA
Rating @ 0.8 pf	5 kVA
Control Panel	Manual/AMF
Size - L x W x H (mm)	1162.5 x 700 x 850
Fuel Tank Capacity (Ltrs)	15
Weight (kg.)	210
ENGINE	
Engine Model	KD441-GSI2
Type	Direct Injection, 4 Stroke
BHP	8.2
RPM	3000
Cooling	Air Cooled
Aspiration	Naturally Aspirated
Cylinders - Bore x Stroke (mm)	1 - 86 x 76
Displacement - cc	441
Governing System	Mechanical
Starting System	12 V DC, 35Ah
ALTERNATOR	
Make	NSM
Voltage (Volts)	230
Frequency (Hz)	50

- Above specifications are subject to change without notice due to continuous technical developments.



Mahindra & Mahindra Ltd.
Powerol Business, Powerol Building,
Gate No. 2, Akurli Road, Kandivali (E),
Mumbai - 400 101, India.

Dealer /OEM address

