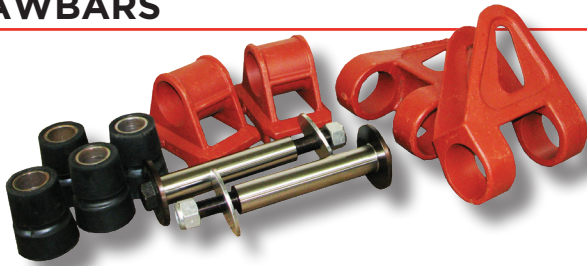


**DRAWBARS**



**Drawbar Universal Hinge Kit**  
UTBK



**Pin and Bush Assembly**  
TRT1109A



**Drawbar Bush**  
AMR3



**Drawbar Bush**  
2 ID x 3.4 OD x 5"  
AMR5



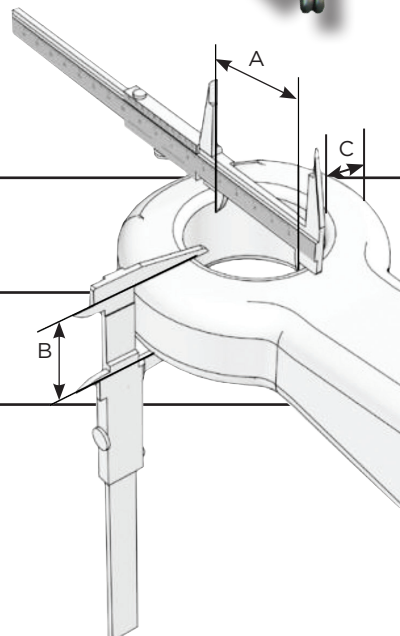
**Drawbar Spring**  
Hooked End  
AMC100271



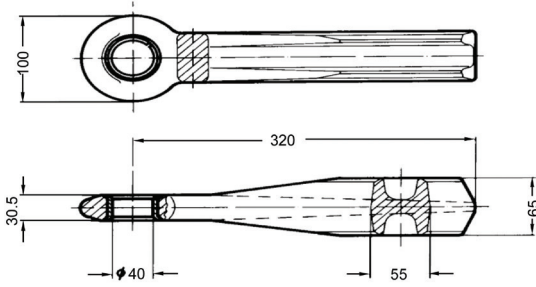
**Drawbar Spring**  
Looped End  
AMC100271L

**TOWEYE WEAR TOLERANCES**

A	$40\text{mm} \leq 41,5 \text{ mm max}$ $50\text{mm} \leq 51,5 \text{ mm max}$
B	$40\text{mm} \geq 28,0 \text{ mm min}$ $50\text{mm} \geq 42,5 \text{ mm min}$
C	$40\text{mm} \geq 22,0 \text{ mm min}$ $50\text{mm} \geq 23,5 \text{ mm min}$



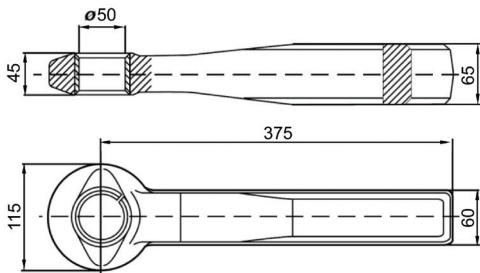
**40MM WELD IN**



Material: heat-treated steel St 52-3  
 D-value: 120kN  
 Weight: 5.8 kgs  
 Jost: Z045  
 Rockinger: 57268



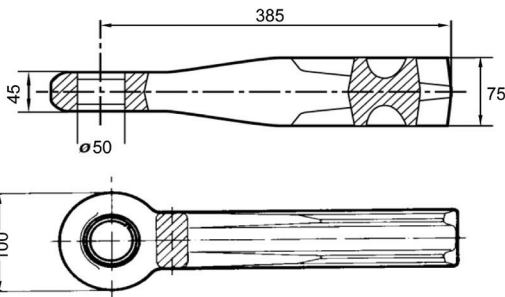
**50MM WELD IN**



Material: heat-treated steel St 52-3  
 D-value: 130kN  
 Weight: 10.3 kgs  
 Jost: Z058  
 Rockinger: 57272



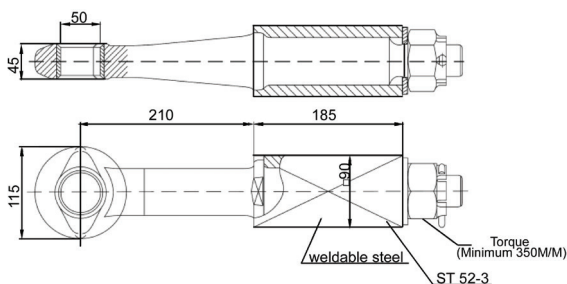
**50MM WELD IN FLUTED STYLE**



Material: heat-treated steel St 52-3  
 D-value: 260kN  
 Weight: 13.4 kgs  
 Jost: Z059  
 Rockinger: 57005



**50MM BOLT IN**



Material: Steel Ck 45 heat-treated to 630-780 N/mm  
 D-value: 130kN  
 Weight: 18.5 kgs (Block is ST52-3 steel)  
 Jost: Z060  
 Rockinger: 57292

**TOWEYE BUSHINGS**



**1 ring**  
 48.5mm OD  
 TB485



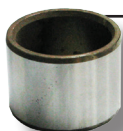
**2 rings**  
 49mm OD  
 TB49



**3 rings**  
 49.5mm OD  
 TB495



**4 rings**  
 50mm OD  
 TB485



60.5 OD  
 TB605



61 OD  
 TB61



61.5 OD  
 TB615