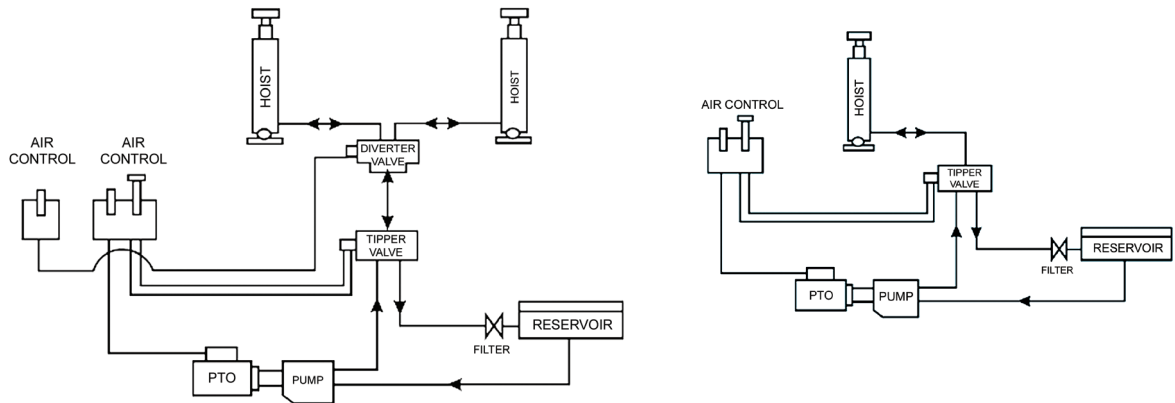
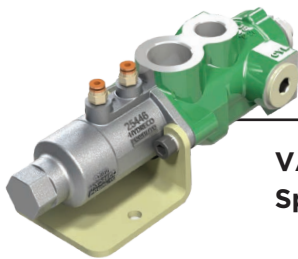


**VALVES**



A basic truck and trailer tipper hydraulic schematic, using a single spool valve, and 2 position diverter.



**VA84 Single Spool Valve**



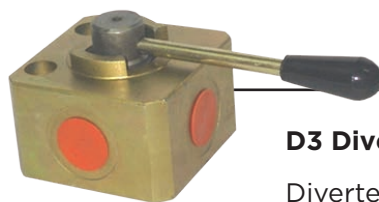
**VA210 Truck and Trailer Valves**



**VA86 Diverter Valve**



D3V <sup>3</sup>/<sub>4</sub>



D3V-IHP

**D3 Diverter valves**

Diverter valves provides a low cost alternative to an air operated truck hydraulic system.



**Tank Valve Assembly**

Tanks come complete and are ready to bolt directly on to trucks. Two capacity options:

- 15L
- 30L

**VALVES**

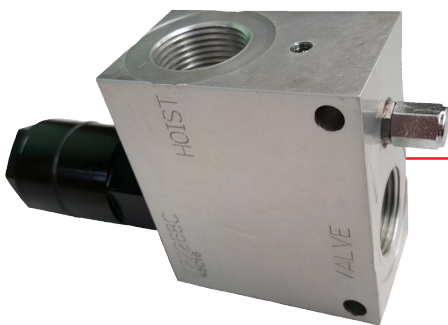
---



**Bypass Valves**  
VABP Series



**End of Stroke Valves**  
UBESV Series



---

**Hose Burst Valves - 73148-A**

This is an in line safety valve that prevents the lowering of the tipper body if a hose ruptures, with a manual override for maximum safety. Ideal for crane winch and tipper trailer applications.

Also used in load holding applications.



---

**Load Hold Valve**

- SV 10
- SV 16

Screw in hydraulic valve for blocking or load holding in applications that require low internal leakage. This has reliable operation in mobile machinery.



---

**Q Series Mobile Hydraulic Valve**

The Q series range has been designed by Hydreco for demanding mobile hydraulic requirements.

The Monoblock valve with its cast iron body provides high-pressure flows and is available in a wide range of spool and operator options.