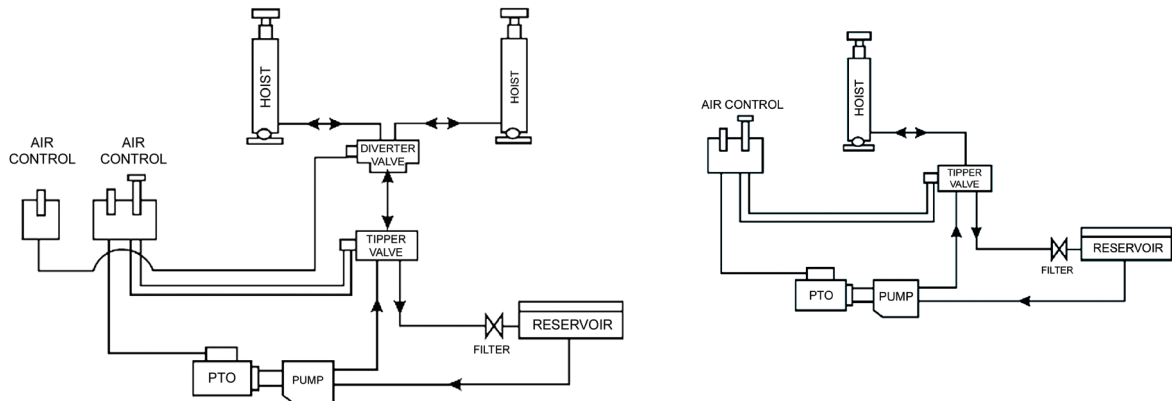




Valves

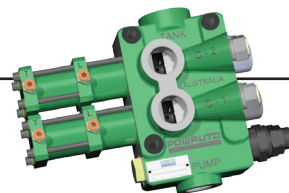
Valves



A basic truck and trailer tipper hydraulic schematic, using a single spool valve, and 2 position diverter.



VA84 Single Spool Valve



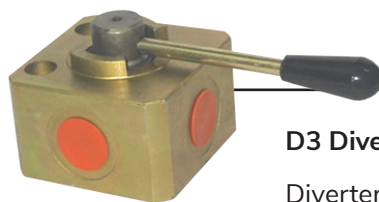
VA210 Truck and Trailer Valves



VA86 Diverter Valve



D3V 3/4



D3V-IHP

D3 Diverter valves

Diverter valves provides a low cost alternative to an air operated truck hydraulic system.



Tank Valve Assembly

Tanks come complete and are ready to bolt directly on to trucks.

Two capacity options:

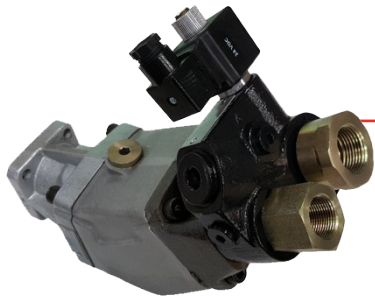
- 15L
- 30L

...for the long haul

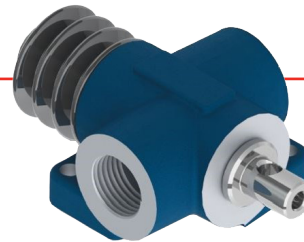


Valves

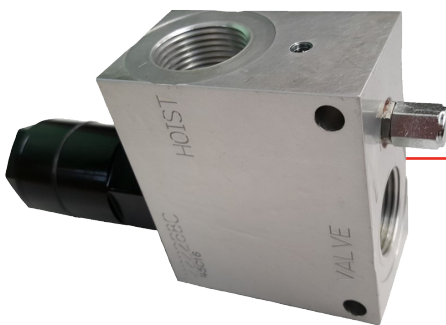
Valves



Bypass Valves
VABP Series



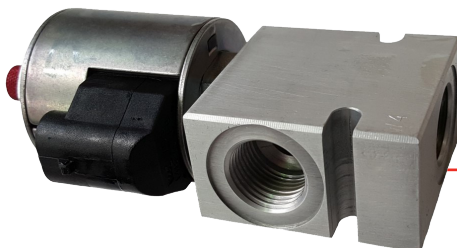
End of Stroke Valves
UBESV Series



Hose Burst Valves – 73148-A

This is an in line safety valve that prevents the lowering of the tipper body if a hose ruptures, with a manual override for maximum safety. Ideal for crane winch and tipper trailer applications.

Also used in load holding applications.



Load Hold Valve

- SV 10
- SV 16

Screw in hydraulic valve for blocking or load holding in applications that require low internal leakage. This has reliable operation in mobile machinery.



Q Series Mobile Hydraulic Valve

The Q series range has been designed by Hydreco for demanding mobile hydraulic requirements.

The Monoblock valve with its cast iron body provides high-pressure flows and is available in a wide range of spool and operator options.

...for the long haul