

TABLE OF CONTENTS

1. Logging into TuMeke
2. Resetting Password
3. Home Screen
4. Recording Videos
5. Risk Assessment
6. Joint Angle Measurements

Congratulations on downloading TuMeke. This guide will lay out all you need to do in order to effectively use the mobile app. If you have any additional concerns, please email us at info@tumeke.io or call us at (209) 380-2668.

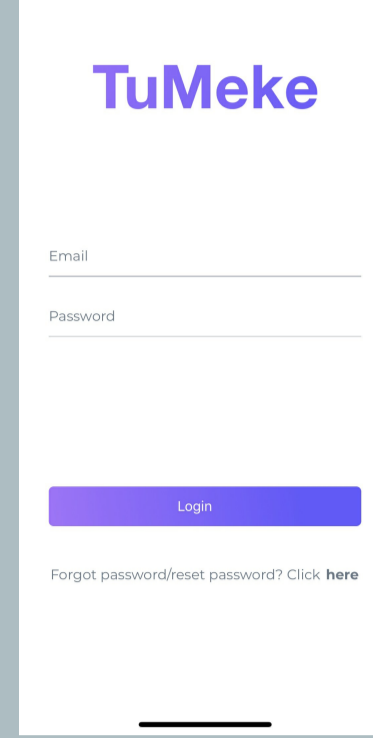
TuMeke User Guide

Logging into TuMeke

1. Before you can login into TuMeke, we ask that you undergo on-boarding with us. You can sign up for a quick on-boarding session at user.tumeke.io. *Please note: our on-boarding process is necessary to ensure security and familiarity of the app.*

2. After you receive your password, you will be able to login. When you first open the TuMeke app, you will be directed to the login screen as shown in *Figure 1*. Enter the appropriate information and select "Login".

Figure 1



TuMeke User Guide

Resetting Password

1. If you have forgotten your password, or you would like to change it, please click on "Click here" at the bottom of the screen. Where to click is shown in a red circle in *Figure 1*.

2. Please hit "Send password reset link" as shown in *Figure 2*. This will send a new password to the email account you used for TuMeke. Please follow the instructions as per your email provider.

3. Once your password has been reset, please go back to the TuMeke login page and enter your email and new password.

Figure 1

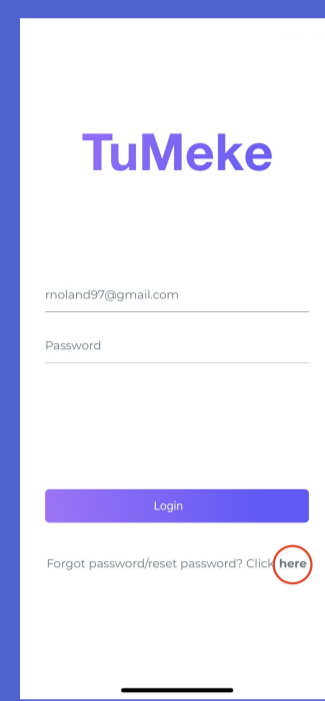
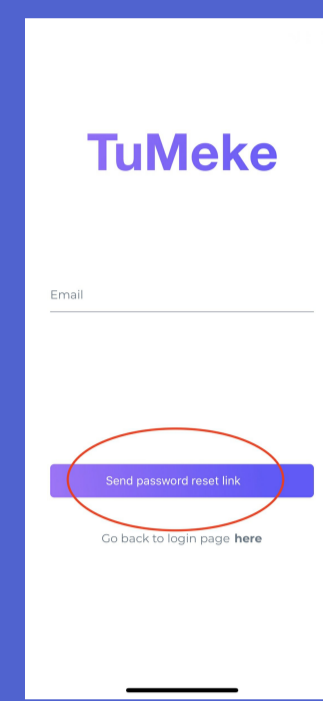


Figure 2



TuMeke User Guide

Home Screen

1. Viewing Videos:

- The home screen displays your videos with most recent videos at the bottom of the list, as shown in *Figure 1*.
- To view a video's risk assessment and joint angle measurements, tap on the video's thumbtack. Please follow the steps in **Risk Assessment Score** and **Joint Angle Measurements** of this User Guide thumbtacks are shown in *Figure 2* by the red circle.
- When you first use TuMeke, you will not have any videos on your home screen. In this version, you will not be able to upload videos to TuMeke. Videos must be taken directly through TuMeke in order to be annotated by our joint tracking software.

Figure 1

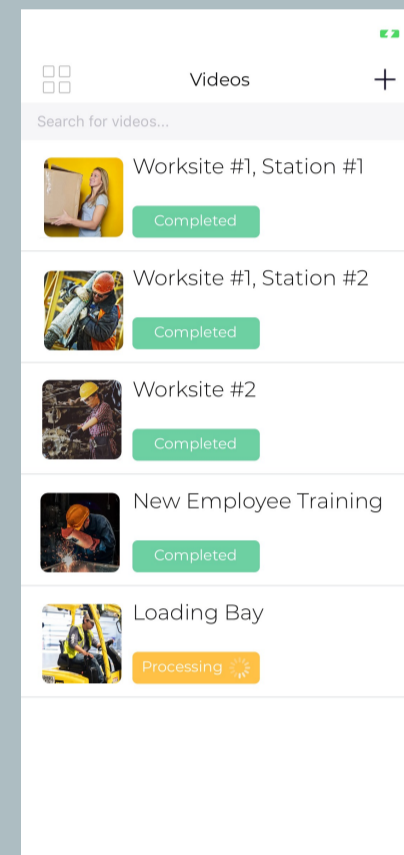
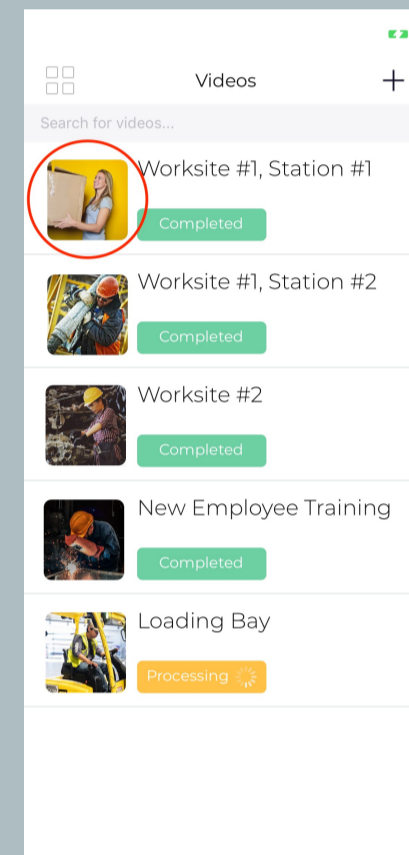


Figure 2



2. Deleting Videos:

- To delete a video, select and hold the video's thumbtack for 3 seconds. You will then be asked whether or not you would like to delete the video.

3. Searching Videos:

- To search for a video, tap on "Search for videos..." located at the top of the home screen, as shown in *Figure 3*. Searching is case sensitive and the search returns all videos whose name contains a substring that equals the name entered.

Figure 3

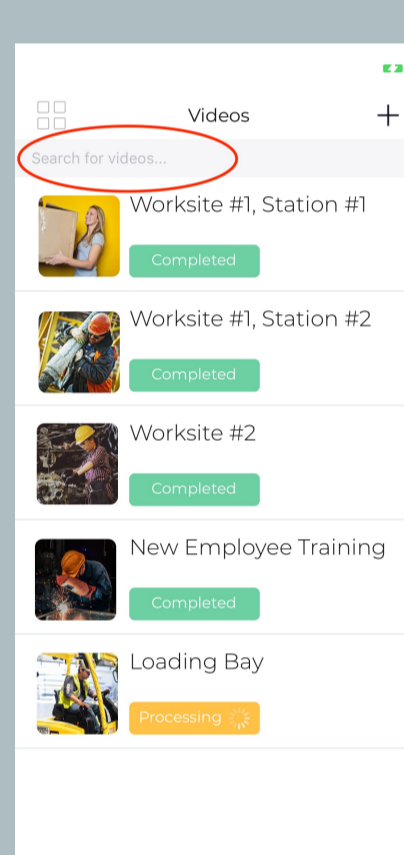
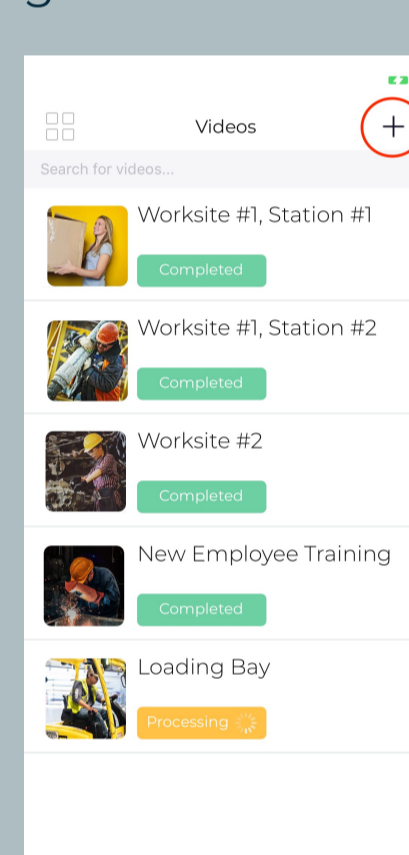


Figure 4



4. Recording Videos:

- To record a new video, select the "+" icon in the top right of the home screen as shown in *Figure 4*. Please follow the steps in **Recording Videos** of this User Guide for more information.

TuMeke User Guide

Recording Videos

1. To record a video, tap on "+" in the top right corner shown in *Figure 1*. Before you begin recording your video, TuMeke will require you to provide a title name for the video.

2. After naming your video, you will arrive at *Figure 2*. To begin recording your video, select the play button. For best results, please record with mobile phone in landscape while standing 10 feet away from whomever you are taking a video of.

3. To end your recording and return to the home screen, select the play button a second time. TuMeke will automatically begin extracting human motion from the video to create a risk assessment score and measure joint angles.

4. Please note that extracting human motion from the video is not an instantaneous process. Please allow for at least 2 minutes for the video to be fully analyzed.

Figure 1

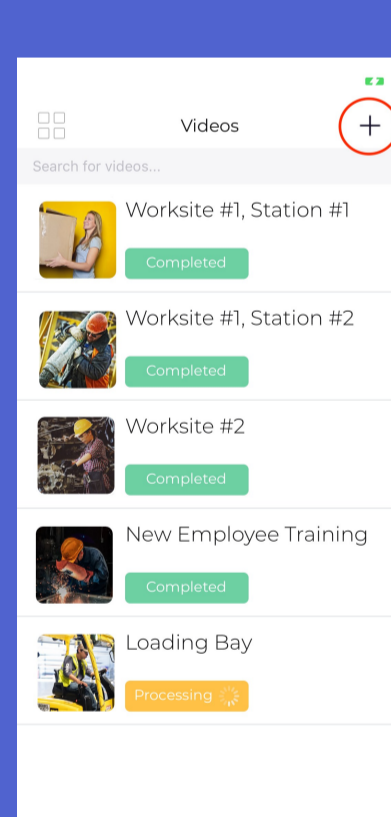
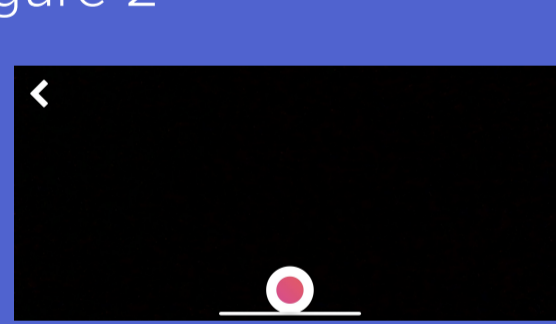


Figure 2



TuMeke User Guide

Risk Assessment

1. Risk Assessment Score:

- To view video's risk assessment and joint angle measurements, tap on the video's thumbtack. Video thumbtacks are shown by the red circle in *Figure 1*.
- To receive an accurate risk assessment, please estimate the forces involved by selecting either "< 4lbs", "4lbs to 22lbs", or "More than 22lbs." Please also select whether muscle use is "Holds still" or "Moves 4 times/ml."

After completing step 2, TuMeke will produce the risk assessment score for the job cycle performed in the video, as shown in *Figure 2*.

Figure 1

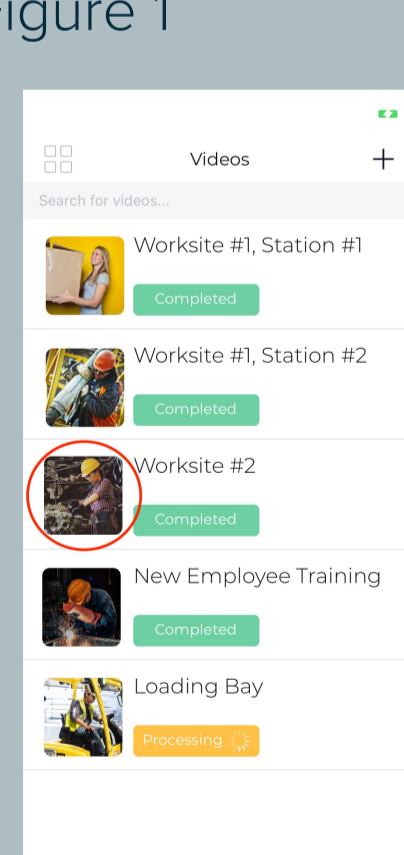
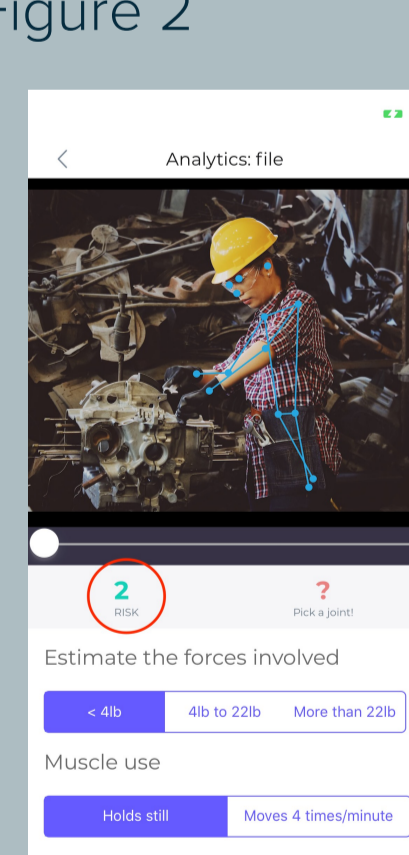


Figure 2



2. Reasons for risk rating:

- TuMeke will tell you what was poor ergonomic form by clicking on the Risk Score, as shown in *Figure 3*.
- The problem points outlined here are what caused TuMeke to assign the Risk Assessment Score it did, as per the RULA assessment. *Figure 4* presents one such example of what this would look like.

Figure 3

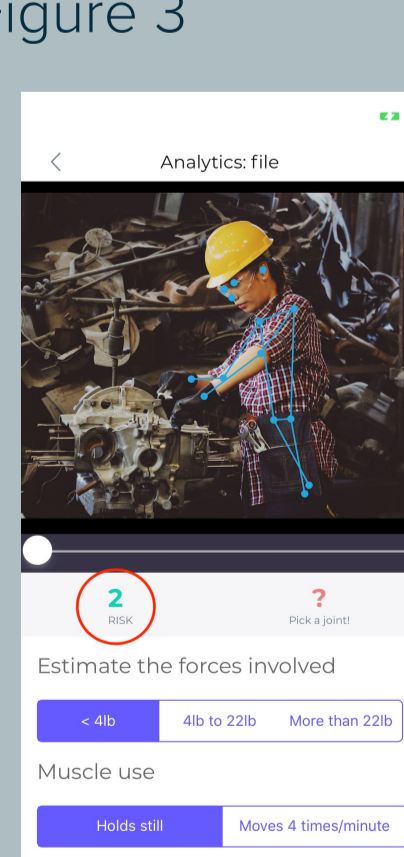
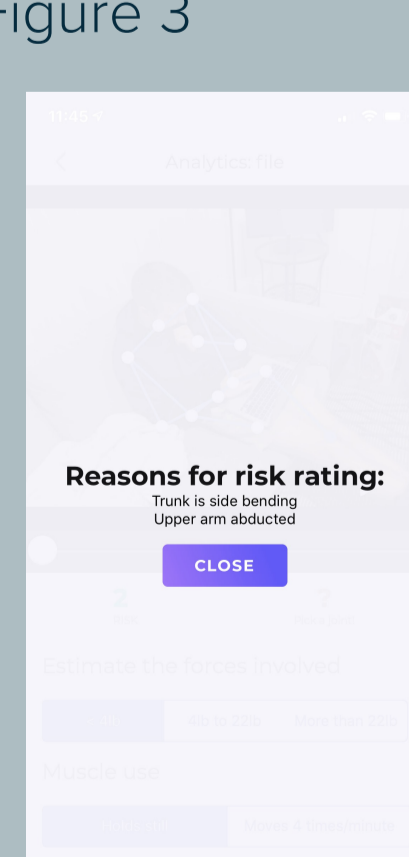


Figure 3



TuMeke User Guide

Joint Angle Measurements

1. To view a video's risk assessment and joint angle measurements, tap on the video's thumbtack. Video thumbtacks are shown by the red circle in *Figure 1*.

2. TuMeke will give you a joint angle measurement by selecting any one of the joints outlined in the video. Joints are represented as blue circles within the video.

3. After selecting a joint in the video, TuMeke will immediately compute the joint angle measurement. In *Figure 2*, the left shoulder had been selected and its respective angle measurement was updated in the red circle.

4. TuMeke also gives you the ability to zoom into the video by pinching your fingers. Best results for joint angle measurements are found when the video is paused and you are zoomed into the joint you would like to measure.

Figure 1

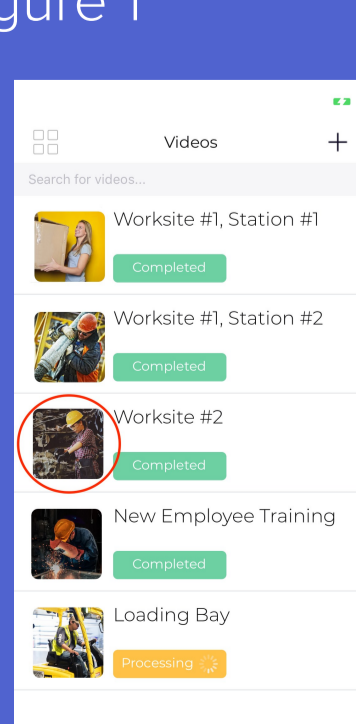


Figure 2

