



WOMEN'S BASKETBALL



2023-24 SCHEDULE/RESULTS

| DATE | OPPONENT | TV/WEB | TIME/RESULT |
|-----------------|--------------------|-----------|-------------|
| NOVEMBER | | | |
| 6 | Bethune-Cookman | ESPN+ | W, 101-63 |
| 13 | Anderson | ESPN+ | W, 96-73 |
| 20 | Auburn | ESPN+ | W, 60-53 |
| 23 | vs. Jackson State^ | FloSports | W, 63-54 |
| 24 | vs. St. John's^ | FloSports | W, 61-48 |
| 25 | vs. Sacred Heart^ | FloSports | W, 69-58 |

DECEMBER

| | | | |
|----|--------------|-------|----------|
| 3 | Campbell | ESPN+ | W, 42-41 |
| 11 | New Orleans | ESPN+ | W, 72-45 |
| 18 | FAU | ESPN+ | L, 59-58 |
| 19 | Morgan State | ESPN+ | W, 67-41 |
| 30 | at Oklahoma* | ESPN+ | L, 69-52 |

JANUARY

| | | | |
|----|-----------------------|-------|-----------|
| 3 | Oklahoma State* | ESPN+ | L, 68-61 |
| 6 | #11/12 Kansas State* | ESPN+ | L, 72-56 |
| 10 | at Cincinnati* | ESPN+ | L, 64-63 |
| 13 | #24 West Virginia* | ESPN+ | 12 p.m. |
| 20 | at #4/7 Baylor* | ESPN+ | 3 p.m. |
| 23 | at TCU* | ESPN+ | 7:30 p.m. |
| 27 | Houston* | ESPN+ | 2 p.m. |
| 30 | at #24 West Virginia* | ESPN+ | 7 p.m. |

FEBRUARY

| | | | |
|----|-------------------------|-------|-----------|
| 3 | Iowa State* | ESPN+ | 12 p.m. |
| 7 | Cincinnati* | ESPN+ | 6 p.m. |
| 10 | at Texas Tech* | ESPN+ | 8 p.m. |
| 13 | BYU* | ESPN+ | 6 p.m. |
| 17 | at #12/12 Kansas State* | ESPN+ | 5 p.m. |
| 21 | at Oklahoma State* | ESPN+ | 6:30 p.m. |
| 24 | #10/10 Texas* | ESPN+ | 12 p.m. |
| 28 | Kansas* | ESPN+ | 6 p.m. |

MARCH

| | | | |
|---|-------------|-------|--------|
| 2 | at Houston* | ESPN+ | 7 p.m. |
| Phillips Big 12 Championship (Kansas City, Mo.) | | | |
| 7-12 T-Mobile Center | | | |

^ - Discover Puerto Rico Classic

* - Big 12 Conference game

All times Eastern. Dates and times subject to change.

Rankings listed are AP/Coaches Polls

THE MATCHUP



UCF Knights (9-5, 0-4 Big 12)

Head Coach: Sytia Messer
Career Record: 77-61 (5th season)
Record at UCF: 23-20 (2nd season)



VS

#24 West Virginia Mountaineers (13-2, 2-2 Big 12)

Head Coach: Mark Kellogg
Career Record: 458-122 (19th season)
Record at West Virginia: 13-2 (1st season)

| | | | |
|---------|--------------------------|--------------|---------------------|
| Date | Jan. 13 | TV | Big 12 Now on ESPN+ |
| Time | 12 p.m. ET | Play-by-Play | Scott Adams |
| Site | Orlando, Fla. | Analyst | BJ Taylor |
| Stadium | Addition Financial Arena | Sideline | |

KNIGHT NOTES

The Rundown

- UCF hosts No. 24 West Virginia on Saturday, Jan. 13.
- This is the second matchup between the two teams, West Virginia came to Orlando in 2005 for the UCF Golden Knights Classic and won 77-63.
- With the Knights being picked last in the Big 12 preseason rankings, they will look to gain their first win in the Big 12 conference as one of the newest members.
- The Knights are ranked No. 2 in the Big 12 with a 74.2 free-throw percentage as the Mountaineers are third in the Big 12 with 21.73 free throw attempts per game.
- UCF and West Virginia spent Thanksgiving break in San Juan, Puerto Rico in different tournaments. Both teams left Puerto Rico with three wins.

Scouting West Virginia

- West Virginia heads into the matchup with a 13-2 record and are 2-2 in the Big 12.
- West Virginia heads into the matchup on a two-game losing streak, facing No. 10 Texas and reigning Big 12 Champion Iowa State.
- Head Coach Mark Kellogg is in his first season at West Virginia and 19th overall as a head coach.
- JJ Quinerly leads the team in scoring, averaging 18.1 points per game.
- Two other Mountaineers are averaging double digits in scoring, Jordan Harrison (14.1) and Lauren Fields (10.1)
- As a team, the Mountaineers are No. 1 in the Big 12 and NCAA for steals per game (14.8).

POTENTIAL STARTERS



G

#0 Laila Jewett

5-10 • Jr.

Woodbridge, Va. • Bishop Ireton HS

PPG RPG APG MPG

9.3 2.8 3.4 33.6



G

#3 Kaitlin Peterson

5-9 • Jr.

Eufaula, Ala. • Indiana

PPG RPG APG MPG

20.6 4.4 1.2 36.1



G

#10 Mya Burns

6-0 • Gr.

North Augusta, S.C. • Ga. Southern

PPG RPG APG MPG

9.7 4.4 1.2 28.8



F

#11 Achol Akot

6-1 • Fr.

Ottawa, Ontario • Capital Courts Acad.

PPG RPG APG MPG

8.1 8.9 1.6 24.8



C

#24 Jayla Kelly

6-3 • Sr.

Chesterfield, Mo. • Missouri

PPG RPG APG MPG

4.9 4.9 0.5 19.1

UCF INFORMATION

| | |
|-----------------------|-----------------------------------|
| Location | Orlando, Fla. |
| Founded | 1963 |
| Enrollment | 68,442 |
| Nickname | Knights |
| Colors | Black and Gold |
| Conference | Big 12 |
| Facility | Addition Financial Arena (10,000) |
| President | Alexander N. Cartwright |
| Director of Athletics | Terry Mohajir |
| Athletics Phone | (407) 823-2261 |
| Ticket Office Phone | (407) 823-1000 |

COACHING STAFF

| | |
|-------------------------------|------------------|
| Head Coach | Sytia Messer |
| Alma Mater | Arkansas, 2000 |
| UCF Record | 23-18 |
| Assistant Coach | Mike Carey |
| Alma Mater | Salem, 1980 |
| Assistant Coach | Chandler McCabe |
| Alma Mater | Providence, 2012 |
| Assistant Coach | Tasha Taylor |
| Alma Mater | Clemson, 2008 |
| Assistant Coach | Walter Pitts |
| Alma Mater | Alabama, 2008 |
| Director of Operations | Erin Horne |
| Alma Mater | Converse, 2017 |
| Director of Video / Asst. DBO | Josh Shen |
| Basketball Office Phone | (407) 823-6266 |

TEAM INFORMATION

| | |
|--------------------------|-----|
| 2023-24 Record | 9-5 |
| Big 12 Conference Record | 0-4 |
| Starters Returning/Lost | 4/3 |
| Players Returning/Lost | 7/7 |
| Newcomers | 6 |

BASKETBALL HISTORY

| | |
|----------------------------------|---------|
| First Year of Basketball | 1977-78 |
| First Year at Division I Level | 1984-85 |
| First Year in The American | 2013-14 |
| First Year in Big 12 | 2023-24 |
| All-Time Record | 678-664 |
| NCAA Tournament Appearances/Last | 7/2022 |
| WNIT Appearances/Last | 2/2018 |

ATHLETIC COMMUNICATIONS

| | |
|--------------------------------|-----------------------------|
| Assistant Director/WBB Contact | Jenna VanHoose |
| Cell phone | 937.844.9473 |
| Email | jvanhoose@athletics.ucf.edu |

KNIGHT NOTES**A Win Would...**

- Give the Knights their first win in Big 12 conference play
- Improve the record to 10-5
- Improve the series to 1-1
- Give Sytia Messer her 24th win at UCF
- Be better than a loss

No. 3 goes for 30-plus (not once, not twice, but three times)

- Kaitlin Peterson set yet another career-high in scoring with 35 points at Cincinnati (1/10).
- Junior mid-year transfer dropped a then career-high 31 points in her first game as a Knight.
- Peterson shot 6-10 from beyond the arc and 12-19 from the field adding in one free throw.
- Marking it her second career game in double digits, and her first since Feb. 9, 2022, at Illinois.
- She also notched the first 30-plus point game by a Knight since Laila Jewett scored 34 in UCF's 79-74 win over Samford Nov. 26, 2022.
- In the third game of the Puerto Rico Classic, Peterson recorded a then career-high 32 points to mark her second 30-plus game of the season.
- She has scored in double digits in .

Déjà Vu

- Kaitlin Peterson recorded back-to-back 20-plus point games on Jan. 3 and 6.
- The Eufaula native tallied 22 points in both games against Oklahoma State and Kansas State.
- Peterson's achievement marked the first time since the 2021-22 season when Diamond Battles scored 21 points in back-to-back games on Jan. 22 and 26.

Back in the Big 12

- Sytia Messer and Mike Carey have spent a good amount of their coaching career in the Big 12.
- Coach Messer spent seven years in Waco as an assistant coach at Baylor.
- Coach Carey is a veteran in the Big 12 where he was the head coach at West Virginia for 21 years, spending 10 of those in the Big 12.
- The Knights are the only coaching staff in the Big 12 to have a previous head coach and assistant coach with Big 12 experience.

New Year, New Addition

- The Knights received a late present with the addition of Femi Funeus on Jan. 9.
- Funeus, a 6-2 forward, competed in 58 games spending three years at Seton Hall and one year at Southern Mississippi.
- Prior to UCF, she has averaged 5.34 points and 4.14 rebounds.
- Last year, Funeus played in a career-high 27 games after spending 714 days away from the playing court due to an injury and recorded the second-best field goal percentage on the team with a 49.2 percent mark.
- A native of Plantation, Florida, Funeus was tabbed to the Big East All-Academic team all three years at Seton Hall.
- Out of high school, she was one of the top-ranked players of out of the state of Florida.

Last Time Out

- Headlined by a career-high 35 points from Kaitlin Peterson, the Knights came up short against Cincinnati, 54-63, in Fifth Third Arena on Wednesday night.
- UCF (9-5, 0-4 Big 12) knotted the game up early, 7-7, then a field goal from Morgan Robinson-Nwagwu gave the Knights the lead but Cincinnati (9-6, 1-3 Big 12) came back with a three to take the lead with 2:32 left in the first. The Bearcats wrapped up the first with a 10-point scoring run, 17-12.
- Peterson hit a three-pointer to get the Knights within two points, 17-15 to start the second quarter. Cincinnati kept the lead throughout the second as the Knights and Bearcats tied with 11 points each to head into halftime with a score of 28-23.
- The Black and Gold opened the third quarter with a 4-0 spurt to make it 30-27. The Bearcats shot 4-7 from beyond the arc to give them the edge 21-20 in the third.
- It all came down to the final frame as the Knights continued to chip away at the Bearcats' lead. Peterson came in clutch with a shooting foul and shot 2-2 from the line to give the Knights a 63-62 lead. A quick second-chance layup from Cincinnati's A'riel Jackson led the Bearcats to their first Big 12 conference victory.

THE SERIES VS. WEST VIRGINIA

| | |
|---------------------------|----------|
| OVERALL:..... | 0-1 |
| In Orlando:..... | 0-1 |
| In Morgantown:..... | n/a |
| In neutral location:..... | n/a |
| Streak:..... | L1 |
| First meeting:..... | 11/19/05 |
| Last meeting:..... | 11/19/05 |
| Last UCF win:..... | n/a |

KNIGHT NOTES

- Achol Akot went 6-6 from the field with 13 points and five rebounds. Khyala Ngodu added a team-high eight rebounds while Robinson-Nwawgu tallied seven boards.

8-0 Start

- The Knights raced out to an 8-0 start to kick off the 2023-24 season, marking the best start in program history.
- The Black and Gold made history with a 72-45 win over New Orleans on Dec. 11.

- Last season under first year head coach Sytia Messer, the Knights started out 6-0 marking the then second-best start since the 7-0 start in 1984.

1,000 Point Club

- Mya Burns eclipsed the 1,000 career points milestone on Dec. 3 against Campbell.
- Burns came to UCF in the 2022-23 season, spending her first three seasons at Georgia Southern accumulating 656 points.
- Burns is the first transfer to earn her 1,000 career points at UCF.

Crashing the Boards

- Freshman Achol Akot leads the team in rebounds, averaging 8.9 rebounds.
- Currently, she is ranked No. 59 in the NCAA for rebounds per game.
- She has recorded a team-high in rebounds every game this season.
- Akot has tallied five games with double digits in rebounds.

Give 'Em The Freebies

- As a team, the Black and Gold are ranked 75th in the nation with a free-throw percentage of 74.2.
- In the matchup against Anderson on Nov. 13, the Black and Gold recorded a season-high 24 free throws made along with a .857 shooting percentage from the line.
- In the Big 12, the Knights are No. 2 in free throw percentage just behind Texas Tech (75.9).

Discover Puerto Rico Classic

- The Black and Gold spent their Thanksgiving break in San Juan, Puerto Rico playing in the Discover Puerto Rico Classic.
- The Knights played a total of three games and left the island with three wins, for an overall record of 6-0.
- UCF faced Jackson State, St. John's and Sacred Heart.

Starting the season on 100

- UCF started the season off with a 101-63 win against Bethune-Cookman on Nov. 6 marking the fifth consecutive season-opening victory, all of which have come on its home floor.
- The Knights also scored at least 90 points in a season-opener for the first time since the 2014-15 campaign, when they topped Florida Atlantic 94-74 Nov. 14.

- UCF topped 100 points in a single game for the first time since January 26, 1998, in its 102-70 victory at Troy.
- The Knights limited BCU to 16 or fewer points in three of the four quarters.
- With 13 3-point field goals, the comfortable victory also featured the second time in as many seasons that saw UCF drill at least 10 triples in its season-opening win. The team drained 11 3-point shots in its 2022-23 season-opening win over Winthrop, representing its lone contest with double-digit threes.

New Faces on the Court

- In UCF's season opener on Nov. 6 against Bethune-Cookman, a total of four Knights made their debut on the hardwood including Kaitlin Peterson, Timia Ware, Achol Akot and Jayla Kelly.
- Peterson, Ware and Akot all started for the Black and Gold and

THE MATCHUP

| UCF | Stats | West Virginia |
|------|-----------------------|---------------|
| 9-5 | Overall Record | 13-2 |
| 0-4 | Conference Record | 2-2 |
| L4 | Streak | L2 |
| 65.8 | Points Per Game | 78.4 |
| 57.7 | Scoring Defense | 56.1 |
| 8.1 | Scoring Margin | 22.3 |
| .417 | Field Goal Percentage | .456 |
| .370 | FG Percentage Defense | .399 |
| 5.3 | 3-PT FG Per Game | 7.5 |
| .343 | 3-PT FG Percentage | .325 |
| .742 | Free Throw Percentage | .699 |
| 39.7 | Rebounds Per Game | 34.6 |
| 7.8 | Rebound Margin | 1.5 |
| 12.1 | Assists Per Game | 16.8 |
| 18.4 | Turnovers Per Game | 15.0 |
| 2.2 | Turnover Margin | 9.8 |
| 0.7 | Assist/Turnover Ratio | 1.1 |
| 7.0 | Steals Per Game | 14.8 |
| 2.4 | Blocks Per Game | 3.4 |

THE LAST MEETING

11/19/05 - West Virginia won 77-63

KNIGHT NOTES

each played significant minutes.

- Akot was the sole freshman that played in the home-opener recording a game-high 14 rebounds highlighted by eight offensive rebounds and three steals.

Back On Campus

- UCF returns seven players from last year's roster.
- Taylor Gibson, Mya Burns, Sierra Godbolt, Laila Jewett and Anzhané Hutton all saw court time last season.
- Morgan Robinson-Nwagwu and Asia Todd both missed the entire 2022-23 season due to injury.

Duo of Mid-Year Transfers

- Kaitlin Peterson (Indiana) and Timia Ware (LSU) transferred mid-year from their respective schools but were only able to practice with UCF due to playing games during the fall semester.
- Peterson played in six games during the fall where she recorded 24 points and five rebounds.
- Ware appeared in one game at LSU before transferring to UCF in December.

Welcome to Orlando

- Four new faces joined the UCF program in the offseason.
- A freshman duo of Achol Akot and Khyala Ngodu arrived in Orlando, along with the transfer class that includes Jayla Kelly (Missouri) and Mary McMillan (UNC-Wilmington).
- Kelly appeared in 26 games last season averaging 3.2 points and 2.7 rebounds.
- McMillan played in five games before suffering a season-ending injury.

Going International

- Freshman Achol Akot spent her summer playing with U19 Team Canada.
- Team Canada went on to earn bronze in the FIBA Women's Basketball World Cup in Spain with a win over France.
- Akot averaged 14.8 minutes in seven games along with 5.9 rebounds.

New Staff, New Era

- The Knights brought in five new faces to join the women's basketball program.
- Chandler McCabe joined the staff as assistant coach in May, along with Erin Horne as director of operations.
- Tasha Taylor was added to the UCF women's basketball coaching staff as an assistant coach in July 2023.
- Mike Carey, a 34-year collegiate coaching veteran with Big 12 Conference experience, enters his first season with the Knights in 2023-24.
- Walter Pitts rounds out the staff as assistant coach and director of player development.

Reppin' the Swoosh

- UCF Athletics has renewed its contract with Nike.
- A new five-year deal keeps Nike as the official apparel and footwear provider of the Knights through the 2028-29 academic year.
- UCF will continue to work directly with Nike as the official supplier of uniforms, equipment and apparel for UCF Athletics.
- "As a Nike school since 2010, UCF has experienced tremendous growth with this partnership, and we will continue to elevate in the Big 12 Conference," says UCF vice president and director of athletics Terry Mohajir.
- "Nike has allowed us to innovate and enhance our brand among some of the best in the country. We look forward to our direct collaboration with our partners at Nike and their renewed commitment and belief in UCF Athletics."

BY THE NUMBERS

2023-24 DOUBLE-DIGIT SCORING GAMES

| PLAYER | 2023-24 | UCF CAREER |
|------------------------|---------|------------|
| Laila Jewett | 5 | 15 |
| Taylor Gibson | 1 | 5 |
| Mya Burns | 7 | 16 |
| Sierra Godbolt | - | 1 |
| Asia Todd | - | 1 |
| Kaitlin Peterson | 13 | 13 |
| Jayla Kelly | 2 | 2 |
| Achol Akot | 4 | 4 |
| Morgan Robinson-Nwagwu | 2 | 2 |
| Khyala Ngodu | 1 | 1 |
| Anzhane Hutton | - | 5 |

2023-24 20-PLUS POINT GAMES

| PLAYER | 2023-24 | UCF CAREER |
|------------------|---------|------------|
| Anzhane Hutton | - | 2 |
| Mya Burns | - | 1 |
| Laila Jewett | 1 | 2 |
| Kaitlin Peterson | 7 | 7 |

2023-24 30-PLUS POINT GAMES

| PLAYER | 2023-24 | UCF CAREER |
|------------------|---------|------------|
| Laila Jewett | - | 1 |
| Kaitlin Peterson | 3 | 3 |

2023-24 DOUBLE-DOUBLES

| PLAYER | 2023-24 | UCF CAREER |
|----------------|---------|------------|
| Anzhane Hutton | - | 3 |
| Mya Burns | 1 | 2 |
| Achol Akot | 1 | 1 |

CAREER DOUBLE-DOUBLES

| Player | Games | Points | Rebounds |
|---------------------------|------------------|----------------|----------|
| Anzhane Hutton (3) | | | |
| 1/8/23 | Tulsa | 22 pts, 13 reb | |
| 1/22/23 | at USF | 16 pts, 10 reb | |
| 2/21/23 | Temple | 17 pts, 11 reb | |
| Mya Burns (2) | | | |
| 2/11/23 | at Memphis | 12 pts, 13 reb | |
| 11/13/23 | Anderson | 16 pts, 11 reb | |
| Achol Akot (1) | | | |
| 11/25/23 | vs .Sacred Heart | 12 pts, 12 reb | |

TIMES A PLAYER HAS LED UCF IN...

| | | | |
|-----------------|---------------------|---------------------|---------------------|
| Points | Peterson (11) | Steals | Burns (2) |
| Jewett (2) | Burns (1) | Jewett (5) | Ware (1) |
| Burns (1) | Akot (1) | Peterson (5) | Ngodu (3) |
| Rebounds | Akot (13) | Robinson-Nwagwu (1) | |
| Burns (1) | Kelly (4) | Blocks | Akot (4) |
| Peterson (2) | Ngodu (3) | Gibson (6) | Burns (4) |
| Assists | Akot (2) | Kelly (4) | Ngodu (1) |
| Jewett (8) | Kelly (1) | McMillan (1) | Robinson-Nwagwu (1) |
| Ngodu (1) | Burns (2) | | |
| Burns (2) | Robinson-Nwagwu (1) | | |
| McMillan (1) | Peterson (2) | | |

UCF ROSTER

| No. | Name | Pos. | Ht. | Cl. | Hometown/High School (Previous School) |
|-----|------------------------|------|------|-----|--|
| 0 | Laila Jewett | G | 5-10 | Jr. | Woodbridge, Va./Bishop Ireton HS |
| 3 | Kaitlin Peterson | G | 5-9 | Jr. | Eufaula, Ala./Eufaula HS (Indiana) |
| 10 | Mya Burns | G | 6-0 | Gr. | North Augusta, S.C./North Augusta HS (Georgia Southern) |
| 11 | Achol Akot | F | 6-1 | Fr. | Ottawa, Ontario/Capital Courts Academy |
| 14 | Asia Todd | G | 5-9 | Gr. | Clayton, N.C./Clayton HS (Liberty) |
| 15 | Taylor Gibson | F | 6-2 | Jr. | Upper Marlboro, Md./Bishop McNamara HS (Michigan) |
| 21 | Timia Ware | G | 5-6 | Jr. | Chicago, Ill./Whitney Young Magnet HS (LSU) |
| 22 | Sierra Godbolt | G | 5-6 | So. | Orlando, Fla./Lake Highland Prep |
| 23 | Anzhanè Hutton | F | 6-0 | Sr. | Dallas, Texas/Cedar Hill HS (Howard) |
| 24 | Jayla Kelly | C | 6-3 | Sr. | Chesterfield, Mo./Parkway Central HS (Missouri) |
| 25 | Femi Funeus | F | 6-2 | Gr. | Plantation, Fla./American Heritage HS (Seton Hall/Southern Miss) |
| 30 | Morgan Robinson-Nwagwu | G | 5-8 | Gr. | Norcross, Ga./Norcross HS (Auburn/Gulf Coast State College) |
| 35 | Khyala Ngodu | C | 6-3 | Fr. | Fort Lauderdale, Fla./Dillard HS |
| 42 | Mary McMillan | G | 5-6 | Sr. | Apopka, Fla./Apopka HS (UNCW) |

COACHING STAFF

Head Coach: Sytia Messer (second season)
 Assistant Coach: Mike Carey (first season)
 Assistant Coach: Chandler McCabe (first season)
 Assistant Coach: Tasha Taylor (first season)
 Assistant Coach / Director of Player Development: Walter Pitts (first season)
 Director of Operations: Erin Horne (first season)
 Director of Video/Assistant DBO: Joshua Shen (second season)

| ROSTER BREAKDOWN | | PRONUNCIATION GUIDE | |
|-------------------------|-------------------------|-----------------------------|--------------------|
| <u>BY STATE/COUNTRY</u> | Laila Jewett | Laila Jewett | LAY-luh JOO-ett |
| <u>Alabama</u> | | Achol Akot | Ah-chol Ah-cot |
| Kaitlin Peterson | <u>BY ELIGIBILITY</u> | Timia Ware | Ta-mee-uh |
| | <u>Graduate Student</u> | Anzhanè Hutton | Ahn-zha-nae |
| <u>Canada</u> | Mya Burns | Femi Funeus | fee-mee few-niss |
| Achol Akot | Morgan Robinson-Nwagwu | Morgan Robinson-Nwagwu..... | Wah-Goo |
| | Asia Todd | Khyala Ngodu | Khy-ala Nuh-go-due |
| <u>Florida</u> | Femi Funeus | | |
| Sierra Godbolt | | Coaches: | |
| Mary McMillan | <u>Senior</u> | Sytia Messer | sit-TEE-uh |
| Khyala Ngodu | Anzhanè Hutton | | |
| Femi Funeus | Jayla Kelly | | |
| | Mary McMillan | | |
| <u>Georgia</u> | | | |
| Morgan Robinson-Nwagwu | | | |
| | <u>Junior</u> | | |
| <u>Illinois</u> | Taylor Gibson | | |
| Timia Ware | Laila Jewett | | |
| | Kaitlin Peterson | | |
| <u>Maryland</u> | Timia Ware | | |
| Taylor Gibson | | | |
| | <u>Sophomore</u> | | |
| <u>Missouri</u> | Sierra Godbolt | | |
| Jayla Kelly | | | |
| | <u>Freshman</u> | | |
| <u>North Carolina</u> | Achol Akot | | |
| Asia Todd | Khyala Ngodu | | |
| | | | |
| <u>South Carolina</u> | | | |
| Mya Burns | | | |
| | | | |
| <u>Texas</u> | | | |
| Anzhanè Hutton | | | |
| | | | |
| <u>Virginia</u> | | | |

UCF, Not Central Florida

Please refer to the University of Central Florida as UCF, not Central Florida, on all references. Also, please note that UCF's teams stopped being referred to as the Golden Knights in 2007. Instead, they are simply called the Knights.



0

LAILA JEWETT

Jr. • G • 5-10 • Woodbridge, Va.

| | GP/GS | PPG | APG | RPG | FG% | 3FG% | FT% |
|--------------|-------|---------|--------|--------|--------|--------|-------|
| 23-24 | 14/14 | 9.3 | 3.4 | 2.8 | 45.1% | 52.4% | 84.2% |
| Career | 52/30 | 7.3 | 2.2 | 2.6 | 34.6% | 37.8% | 78.5% |
| Career Highs | | Pts: 34 | Ass: 7 | Reb: 9 | Stl: 3 | Blk: 1 | |

- Averaging 35.6 minutes per game
- Recorded a season-high 21 points against New Orleans going 7-10 from beyond the arc (11/20/23)
- Appeared in all 29 games last season with 16 starts
- Tallied a career-high 34 points against Samford (11/16/22)
- Leads the team in assists with 46
- The lone junior on the roster that isn't a transfer, has been at UCF all three years



3

KAITLIN PETERSON

Jr. • G • 5-9 • Eufaula, Ala. • Indiana

| | GP/GS | PPG | APG | RPG | FG% | 3FG% | FT% |
|--------------|-------|---------|--------|--------|--------|--------|-------|
| 23-24 | 14/14 | 20.6 | 1.2 | 4.4 | 39.1% | 36.4% | 70.7% |
| Career | 41/14 | 8.4 | .58 | 1.8 | 38.6% | 33.3% | 65.6% |
| Career Highs | | Pts: 35 | Ass: 4 | Reb: 7 | Stl: 6 | Blk: 1 | |

- Recorded back-to-back 20-plus point games (1/3 and 1/6)
- Dished out a career-high four assists against Oklahoma State (1/3)
- Dropped a career-high 35 points at Cincinnati, marking her third 30-plus game (1/10)
- Tallied 31 points in her UCF debut against Bethune-Cookman (11/6)
- Snagged a career-high seven rebounds against Auburn (11/20)
- Transferred to UCF mid-year from Indiana after playing in six games her sophomore season



10

MYA BURNS

Gr. • G • 6-0 • North Augusta, S.C. • Georgia Southern

| | GP/GS | PPG | APG | RPG | FG% | 3FG% | FT% |
|--------------|---------|---------|--------|---------|--------|--------|-------|
| 23-24 | 14/14 | 9.7 | 1.2 | 3.9 | 39.3% | 25.7% | 83.8% |
| Career | 125/109 | 8.4 | .91 | 4.3 | 35.5% | 31.1% | 76.3% |
| Career Highs | | Pts: 31 | Ass: 4 | Reb: 13 | Stl: 4 | Blk: 5 | |

- Shot 31-37 from the free-throw line this season (.838)
- Eclipsed 1,000 career points against Campbell (12/5)
- Tallied a double-double against Anderson with 16 points and 11 rebounds (11/13)
- Started in all 29 games last season, averaging 9.1 ppg
- Led the team in free-throw shooting percentage going 64-80 (.800)
- Spent her first three seasons at Georgia Southern (2019-2022)



11

ACHOL AKOT

Fr. • F • 6-1 • Ottawa, Ontario

| | GP/GS | PPG | APG | RPG | FG% | 3FG% | FT% |
|--------------|-------|---------|--------|---------|--------|--------|-------|
| 23-24 | 14/14 | 8.1 | 1.6 | 8.9 | 53.9% | - | 56.3% |
| Career | 14/14 | 8.1 | 1.6 | 8.9 | 53.9% | - | 56.3% |
| Career Highs | | Pts: 14 | Ass: 7 | Reb: 14 | Stl: 2 | Blk: 3 | |

- Ranked 59th in the NCAA for rebounds per game (8.9)
- Made her debut as a Knight in the season opener against Bethune-Cookman, totaling 14 rebounds (11/6)
- Tallied a career-high 14 points against Anderson (11/13) and Campbell (12/3)
- Recorded first career double-double, with 12 points and 12 rebounds vs. Sacred Heart
- Only freshman at Big 12 Tip-Off for both men's and women's
- Played internationally in the FIBA World Cup with the U19 Canadian Team, averaging 14.8 mpg, 2.6 ppg and 5.9 rpg



14

ASIA TODD

Gr. • G • 5-9 • Clayton, N.C. • Liberty

| | GP/GS | PPG | APG | RPG | FG% | 3FG% | FT% |
|--------------|-------|---------|--------|--------|--------|--------|-------|
| 23-24 | 8/0 | 2.3 | .25 | 0.9 | 47.1% | 33.3% | - |
| Career | 61/27 | 5.4 | .80 | 1.9 | 39.4% | 37.9% | 66.7% |
| Career Highs | | Pts: 24 | Ass: 5 | Reb: 6 | Stl: 3 | Blk: 2 | |

- Has battled through multiple injuries throughout her time at UCF, did not play last season due to injury and appeared in one contest her junior season
- Came off the bench on opening night scoring eight points in eight minutes of play against Bethune-Cookman (11/6)
- Transferred from Liberty in 2020
- Appeared in 21 games earning two starts in her first season as a Knight (20-21)
- Liberty's first ever ASUN All-Freshman team honoree



15

TAYLOR GIBSON

Jr. • F • 6-2 • Upper Marlboro, Md. • Michigan

| | GP/GS | PPG | APG | RPG | FG% | 3FG% | FT% |
|--------------|-------|---------|--------|---------|--------|--------|-------|
| 23-24 | 13/0 | 4.0 | 0.15 | 2.2 | 45.5% | - | 100% |
| Career | 45/14 | 4.7 | 0.33 | 2.8 | 37.4% | 11.5% | 82.1% |
| Career Highs | | Pts: 17 | Ass: 2 | Reb: 10 | Stl: 2 | Blk: 2 | |

- Posted a season-high 10 points against Anderson (11/13)
- Shooting 100% from the free-throw line (12-12)
- Posted her first double-double outing with a career-high 17 points and 10 rebounds vs. SEMO (11/27/22)
- Pulled down a career-high 10 rebounds against SEMO (11/27/22) and Temple (2/21/23)
- Shot 4-5 from the field vs. St. John's (11/24)
- Transferred from Michigan where she spent her freshman season, playing in three games



21

TIMIA WARE

Jr. • G • 5-6 • Chicago, Ill. • LSU

| | GP/GS | PPG | APG | RPG | FG% | 3FG% | FT% |
|--------------|-------|---------|--------|--------|--------|--------|-------|
| 23-24 | 10/1 | 2.5 | 1.3 | 2.0 | 20.5% | 20.0% | 85.7% |
| Career | 28/1 | 2.1 | 0.9 | 1.5 | 29.1% | 19.2% | 52.9% |
| Career Highs | | Pts: 11 | Ass: 5 | Reb: 7 | Stl: 2 | Blk: 1 | |

- Earned a start in her first appearance as a Knight, scoring nine points, five assists and seven rebounds
- Transferred mid-year from LSU to join the Knights in 2023
- Appeared in one game before transferring
- Saw action in 17 games off the bench during her freshman season at LSU
- Recorded career-high 11 points against Alcorn State (12/15/21)
- Snagged two steals in back-to-back games this season (Auburn and Anderson)



22

SIERRA GODBOLT

So. • G • 5-6 • Orlando, Fla.

| | GP/GS | PPG | APG | RPG | FG% | 3FG% | FT% |
|--------------|-------|---------|---------|--------|--------|--------|-------|
| 23-24 | 13/0 | 0.3 | .85 | 0.2 | 8.3% | - | 100% |
| Career | 42/14 | 3.2 | 2.6 | 1.0 | 28.7% | 15.0% | 71.2% |
| Career Highs | | Pts: 14 | Ass: 10 | Reb: 5 | Stl: 4 | Blk: 1 | |

- Played in 13 games this season
- Appeared in all 29 games as a freshman, including 14 starts
- Led the Knights in assists with 98, ending at No. 6 in the AAC in assists (22-23 season)
- Dished out a career-high 10 assists in UCF's win over Tulsa in the first round of the AAC tournament
- Tallied a career-high four steals in three games last season



24

JAYLA KELLY

Sr. • C • 6-3 • Chesterfield, Mo. • Missouri

| | GP/GS | PPG | APG | RPG | FG% | 3FG% | FT% |
|--------------|-------|---------|--------|---------|--------|--------|-------|
| 23-24 | 14/13 | 4.9 | 0.5 | 5.2 | 47.1% | - | 67.7% |
| Career | 72/35 | 2.9 | 0.4 | 2.4 | 44.0% | - | 55.6% |
| Career Highs | | Pts: 14 | Ass: 4 | Reb: 10 | Stl: 3 | Blk: 3 | |

- Played in 14 games this season, earning the starting nod 13 times
- Leads the team in blocks with seven
- Scored 14 points going 6-10 from the field and nine rebounds in her UCF debut (11/6/23)
- Spent her first three seasons at Mizzou where she played in 58 games with 22 starts
- Named to the 2022-23 Winter SEC Academic Honor Roll
- Ranked as the No. 2 prospect in the state of Missouri by ESPNW and Prospects Nation State



25

FEMI FUNEUS

Gr. • F • 6-2 • Plantation, Fla. • Seton Hall/Southern Miss

| | GP/GS | PPG | APG | RPG | FG% | 3FG% | FT% |
|--------------|-------|---------|--------|---------|--------|--------|-------|
| 23-24 | 1/0 | - | - | 1.0 | - | - | - |
| Career | 59/23 | 5.3 | 0.3 | 4.1 | 45.2% | - | 63.8% |
| Career Highs | | Pts: 21 | Ass: 3 | Reb: 12 | Stl: 4 | Blk: 4 | |

- Added to the Knights roster on Jan. 9, 2024
- Made her UCF debut at Cincinnati (1/10)
- Spent three years at Seton Hall (18-21) and one at Southern Miss (22-23)
- Played in 27 games last season where she averaged 6.7 points per game and 5.9 rebounds per game
- 3x Big East All-Academic
- Second-best field goal percentage on the team with a 49.2 mark in 2022-23 season



30

MORGAN ROBINSON-NWAGWU

Gr. • G • 5-8 • Norcross, Ga. • Auburn / Gulf Coast State College

| | GP/GS | PPG | APG | RPG | FG% | 3FG% | FT% |
|--------------|-------|---------|--------|--------|--------|--------|-------|
| 23-24 | 12/0 | 3.3 | .67 | 2.0 | 50.0% | 25.0% | 63.6% |
| Career | 55/3 | 1.9 | 1.4 | 1.4 | 29.0% | 17.9% | 63.4% |
| Career Highs | | Pts: 13 | Ass: 6 | Reb: 7 | Stl: 4 | Blk: 1 | |

- Tallied a career-high seven rebounds at Cincinnati (1/10)
- Recorded a career-high five field goals made against Oklahoma State (1/3)
- Stepped on the court for the first time as a Knight against Anderson tallied 13 points and three rebounds (11/13)
- Transferred to UCF in 2022 and suffered a season-ending injury that forced her to miss the '22-'23 season
- Played in all 29 games as a freshman at Auburn
- Transferred to Gulf Coast State College in 2021 where she averaged 20.2 ppg and 7.7 rpg during the '21-'22 season



35

KHYALA NGODU

Fr. • C • 6-3 • Fort Lauderdale, Fla.

| | GP/GS | PPG | APG | RPG | FG% | 3FG% | FT% |
|--------------|-------|---------|--------|---------|--------|--------|-------|
| 23-24 | 13/0 | 3.5 | 0.7 | 4.5 | 50.0% | - | 90.9% |
| Career | 13/0 | 3.5 | 0.7 | 4.5 | 50.0% | - | 90.9% |
| Career Highs | | Pts: 12 | Ass: 3 | Reb: 10 | Stl: 2 | Blk: 1 | |

- Recorded a perfect shooting game going 2-2 from the field and 4-4 from the free-throw line against Oklahoma St. adding four rebounds (1/3)
- Pulled down a career-high 10 boards against New Orleans (12/11)
- Tallied 12 points and pulled down seven rebounds against Jackson St. in the Puerto Rico Classic (11/23)
- Averaged a double-double with 14.4 ppg and 12.1 rpg in her senior season at Dillard HS
- Ranked No. 7 player in the state of Florida out of high school



42

MARY MCMILLAN

Sr. • G • 5-6 • Apopka, Fla. • UNC Wilmington

| | GP/GS | PPG | APG | RPG | FG% | 3FG% | FT% |
|--------------|-------|---------|--------|--------|--------|--------|-------|
| 23-24 | 5/0 | - | - | 1.8 | 0.6 | - | - |
| Career | 52/37 | 6.0 | 2.3 | 1.6 | 29.8% | 32.1% | 61.0% |
| Career Highs | | Pts: 25 | Ass: 6 | Reb: 5 | Stl: 4 | Blk: 1 | |

- Appeared in her first game as a Knight against Morgan State (12/19)
- Transferred to UCF from UNC Wilmington
- Played in 47 games at UNCW, earning 37 starts
- Named team captain and made five starts her junior year before suffering a season-ending injury
- Guided Apopka to a 24-4 record and district championship in 2019-20
- One of seven children in her family

BY THE NUMBERS

12.9 The Knights average 12.9 free throws per game. UCF posted a season-high 24 against Anderson on Nov. 13.

74.2 UCF is 74.2% from the free throw line this season. Which ranks them No. 75 in the NCAA and No. 2 in the Big 12.

39.7 The Black and Gold average 39.7 rebounds per game. Against Anderson, the Knights tallied 58 boards in the 96-73 victory.

20.6 Kaitlin Peterson averages 20.6 points per game good enough to be ranked No. 18 in the NCAA. She started the season out on a six-game streak with double-digit scoring.

8.9 Achol Akot leads the team with 8.9 rebounds per game and is ranked No. 59 in the NCAA. She recorded the first double-double of her career in the 69-58 victory over Sacred Heart.

THE BIG 12

2023-24 BIG 12 CONFERENCE STANDINGS

| Team | Overall | BIG 12 |
|----------------|------------|------------|
| Kansas State | 16-1 | 4-0 |
| Iowa State | 11-4 | 4-0 |
| Texas | 16-1 | 3-1 |
| Baylor | 14-1 | 3-1 |
| Oklahoma State | 10-5 | 3-1 |
| Oklahoma | 9-6 | 3-1 |
| West Virginia | 13-2 | 2-2 |
| Texas Tech | 13-4 | 2-2 |
| TCU | 14-3 | 1-3 |
| Houston | 10-5 | 1-3 |
| Cincinnati | 9-6 | 1-3 |
| Kansas | 8-7 | 1-3 |
| UCF | 9-5 | 0-4 |
| BYU | 10-7 | 0-4 |

*as of 1/11/23

UCF IN THE 2023-24 BIG 12 WEEKLY AWARDS

BIG 12 PRESEASON POLL

| Team (1st place votes) | Points |
|------------------------|--------|
| 1. Texas (12) | 168 |
| 2. Baylor (2) | 148 |
| 3. Kansas | 138 |
| 4. Kansas State | 133 |
| 5. Oklahoma | 121 |
| 6. Iowa State | 107 |
| 7. Oklahoma State | 99 |
| 8. West Virginia | 80 |
| 9. TCU | 77 |
| 10. Texas Tech | 63 |
| 11. BYU | 56 |
| 12. Houston | 45 |
| 13. Cincinnati | 22 |
| 14. UCF | 18 |

SINGLE-GAME RECORDS

Most Points

127 vs. Edward Waters.....1981-82

Most Points, Both Teams

208 (Tulane 117, UCF 91) 1986-87

Fewest Points Allowed

19 vs. Palm Beach Atlantic..... 1983-84

Fewest Points, Both Teams

73 (UCF 41, Virginia Tech 32) 2011-12

Largest Win Margin

82 (UCF 101, Palm Beach Atlantic 19) ... 1983-84

Worst Defeat

64 (Louisiana Tech 121-57).....1989-90

Most Points in a Losing Effort

101 vs Lamar1990-91

Most Points Allowed

121 vs. Louisiana Tech.....1989-90

Most Field Goals

54 vs. Eckerd.....1981-82

Most Field Goals Attempted

102 vs. Tampa.....1978-79

Best Field Goal Percentage

.667 (36-54) at Mercer.....2002-03

Most Free Throws Made

33 vs. Memphis.....2012-13

Most Free Throws Attempted

52 vs. Florida A&M..... 1979-80

Fewest Free Throws Made

1 vs. Memphis 2010-11

1 vs. Lamar.....1990-91

Fewest Free Throws Attempted

1 vs. UConn..... 2016-17

Best Free Throw Percentage

1.000 (12-12) vs. Florida State...Dec. 16, 2009

1.000 (11-11) vs. Stetson..... 1996-97

Worst Free Throw Percentage

.200 (7-18) vs. Florida Southern.....1978-79

.200 (1-5) vs. Lamar1990-91

Most Rebounds

76 vs. Edward Waters.....1981-82

Most Steals

28 vs. Rollins1983-84

Most Blocked Shots

13 vs. Livingston.....1981-82

Worst Field Goal Percentage

.171 (6-35) vs. UT-Arlington.....2005-06

Most Three-Point FGs Made

13 vs. Bethune-Cookman..... 2023-24

13 vs. Stetson1997-98

13 vs. Troy1997-98

Most Three-Point FGs Attempted

30 vs. Winthrop2022-23

Highest Three-Point FG Percentage

.833 (n/a) vs. Georgia Southern..... 1986-87

CAREER RECORD WATCH

UCF'S RECORD IN 2023-24 WHEN...

THE LAST TIME...

Most Points

| | |
|--------------------------------------|-------|
| 1. Tamika Coley (91-92, 93-96) | 2,006 |
| 2. Zykira Lewis (13-17)..... | 1,883 |
| 3. Kay Kay Wright (16-20)..... | 1,614 |
| 4. Susan Patz (82-86)..... | 1,587 |
| 5. Chelsie Wiley (07-11)..... | 1,531 |
| 6. Chariya Davis (95-99)..... | 1,517 |
| 7. Aliyah Gregory (14-18)..... | 1,437 |
| 8. Yolanda Rhodes (88-92)..... | 1,322 |
| 9. D'Nay Daniels (07-11)..... | 1,217 |
| 10. Masseny Kaba (17-22)..... | 1,209 |

Most Rebounds

| | |
|-------------------------------------|-------|
| 1. Tamika Coley (91-92, 93-96)..... | 1,211 |
| 2. Emma Cannon (07-10)..... | 903 |
| 3. Erika Jones (10-14)..... | 882 |
| 4. Masseny Kaba (17-21)..... | 842 |
| 5. Nyala Shuler (14-19)..... | 837 |
| 6. Aisha Patrick (08-12)..... | 819 |
| 7. Destiny Thomas (19-23)..... | 719 |
| 8. Adrienne Billings (00-04)..... | 676 |
| 9. D'Nay Daniels (07-11)..... | 649 |
| 10. Chariya Davis (95-99)..... | 634 |

Most Assists

| | |
|----------------------------------|-----|
| 1. Chariya Davis (95-99)..... | 531 |
| 2. Kay Kay Wright (16-20)..... | 494 |
| 3. Julie Cardinale (83-87)..... | 415 |
| 4. Karen Harvey (80-84)..... | 396 |
| 5. Aisha Patrick (08-12)..... | 357 |
| 6. Angelica Mealing (07-11)..... | 327 |
| 7. Marcie Swilley (79-83)..... | 326 |
| 8. LaShay King (02-06)..... | 322 |
| 9. Shayla Smith (02-06)..... | 304 |
| 10. Diamond Battles (18-22)..... | 300 |

Most Steals

| | |
|-------------------------------------|-----|
| 1. Chariya Davis (95-99)..... | 284 |
| Aisha Patrick (08-12)..... | 284 |
| 3. Kay Kay Wright (16-20)..... | 268 |
| 4. Zykira Lewis (13-17)..... | 257 |
| 5. Marcie Swilley (79-83)..... | 250 |
| 6. Yolanda Rhodes (88-92)..... | 243 |
| 7. Tamika Coley (91-92, 93-96)..... | 202 |
| 8. Gylauda Henderson (93-97)..... | 189 |
| 9. Brinda Green (88-92)..... | 176 |
| 10. Diamond Battles (18-22)..... | 168 |

Most Blocks

| | |
|-------------------------------------|-----|
| 1. Ali Roberts (01-05)..... | 219 |
| 2. Shelby Weber (02-06)..... | 157 |
| 3. Masseny Kaba (17-22)..... | 122 |
| 4. Adrienne Billings (00-04)..... | 109 |
| 5. Destiny Thomas (19-23)..... | 99 |
| 6. Meg Schuler (81-83)..... | 96 |
| 7. Shannon King (88-91)..... | 86 |
| 8. Susan Patz (82-91)..... | 85 |
| 9. Nyala Shuler (14-19)..... | 84 |
| 10. Ndeye "Fifi" Ndour (14-19)..... | 81 |

Most Free Throws Made

| | |
|-------------------------------------|-----|
| 1. Tamika Coley (91-92, 93-96)..... | 512 |
| 2. Chariya Davis (95-99)..... | 393 |
| 3. Susan Patz (82-86)..... | 371 |
| 4. Emma Cannon (07-10)..... | 339 |
| 5. Chelsie Wiley (06-11)..... | 311 |
| 6. Kay Kay Wright (16-20)..... | 288 |
| 7. Aisha Patrick (08-12)..... | 267 |
| 8. Diamond Battles (18-22)..... | 251 |
| 9. Masseny Kaba (17-22)..... | 243 |
| 10. Aliyah Gregory (14-18)..... | 242 |

| | |
|---|-----|
| At Home..... | 6-3 |
| On The Road..... | 0-2 |
| Neutral..... | 3-0 |
| Win the tip..... | 5-2 |
| Lose the tip..... | 4-3 |
| Leading at the Half..... | 8-0 |
| Trailing at the Half..... | 1-5 |
| Tied at the Half..... | 0-0 |
| Scoring Fewer than 50 Points..... | 1-0 |
| Scoring 50-59 Points..... | 0-3 |
| Scoring 60-69 Points..... | 5-2 |
| Scoring 70-79 Points..... | 1-0 |
| Scoring 80+ Points..... | 2-0 |
| Opponent Scores Fewer than 50 Points... | 4-0 |
| Opponent Scores 50-59 Points..... | 3-1 |
| Opponent Scores 60-69 Points..... | 1-3 |
| Opponent Scores 70-79 Points..... | 1-1 |
| Opponent Scores 80+ Points..... | 0-0 |
| Outrebounding Opponent..... | 7-2 |
| Outrebounded by Opponent..... | 1-3 |
| Rebounds are Tied..... | 1-0 |
| Games Decided by 1-5 Points..... | 1-2 |
| Games Decided by 6-10 Points..... | 2-1 |
| Games Decided by 11-19 Points..... | 2-2 |
| Games Decided by 20+ Points..... | 4-0 |
| Overtime Games..... | 0-0 |
| Commit fewer turnovers..... | 3-2 |
| Commit more turnovers..... | 5-3 |
| Turnovers equal..... | 1-0 |
| Have more assists..... | 8-0 |
| Have fewer assists..... | 1-5 |
| Assists are tied..... | 0-0 |
| Outscore opponents bench..... | 5-1 |
| No players in double figures..... | 0-0 |
| One player in double figures..... | 2-1 |
| Two players in double figures..... | 2-2 |
| Three players in double figures..... | 3-1 |
| Four+ players in double figures..... | 2-1 |
| Have a double-double..... | 2-0 |
| November..... | 6-0 |
| December..... | 3-2 |
| January..... | 0-3 |
| February..... | 0-0 |
| March..... | 0-0 |
| Monday..... | 3-1 |
| Tuesday..... | 1-0 |
| Wednesday..... | 0-2 |
| Thursday..... | 1-0 |
| Friday..... | 1-0 |
| Saturday..... | 1-2 |
| Sunday..... | 1-0 |

| |
|---|
| UCF scored 100 or more points... vs. Bethune-Cookman, Nov. 6, 2023 (W, 101-63) |
| UCF played an overtime game... vs. Cincinnati, Feb. 25, 2023 (W, 64-54) |
| UCF played a double overtime game... vs. Samford, Nov. 26, 2022 (W, 79-74) |
| UCF won a game by 20+ points... vs. New Orleans, Dec. 11, 2023 (W, 72-45) |
| UCF won a game by 30+ points... vs. Bethune-Cookman, Nov. 6, 2023 (W, 101-63) |
| UCF held an opponent under 35 points... vs. Winthrop, Nov. 7, 2022 (W, 72-32) |
| A UCF player scored 20 or more points... at Cincinnati, Jan. 10, 2024 Kaitlin Peterson, 35 points |
| Two UCF players scored 20 or more pts... vs. Cincinnati, Feb. 25, 2023 Destiny Thomas, 21 pts; Mya Burns, 20 pts |
| A UCF player scored 30 or more pts... vs. Sacred Heart, Nov. 25, 2023 Kaitlin Peterson, 32 |
| A UCF player recorded a double-double... vs. Sacred Heart, Nov. 25, 2023 Achol Akot (12 pts, 12 reb) |
| Two UCF players recorded double-doubles... vs. SEMO, Nov. 27, 2022 Taylor Gibson (17 pts, 10 reb); Destiny Thomas (12 pts, 10 reb) |
| A UCF player had 10 or more assists... vs. Tulsa, March 6, 2023 Sierra Godbolt, 10 |
| A UCF player had 20 or more rebounds... vs. Cincinnati, Feb. 25, 2023 Destiny Thomas (20 rebounds) |
| A UCF player had five or more steals... vs. Florida Atlantic, Dec. 18, 2023 Kaitlin Peterson, 6 |
| A UCF player had five or more blocks... at Memphis, Feb. 11, 2023 Mya Burns, 5 |
| A UCF player had five or more three-pointers... vs. New Orleans, Dec. 11, 2023 Laila Jewett, 7 |

SINGLE GAME RECORDS

Most Points

| | |
|---|----|
| 1. Tari Phillips vs. Lamar (2/9/91)..... | 45 |
| 2. Zykira Lewis vs. FAU (11/14/14)..... | 41 |
| Tari Phillips vs. Texas Pan-Am (2/7/91)..... | 41 |
| 4. Kay Kay Wright vs. Wichita State (3/2/20)..... | 37 |
| Tari Phillips vs. Stetson (3/1/91)..... | 37 |
| Susan Patz vs. Harvard (12/19/83)..... | 37 |
| 7. Shantrice Saxon vs. Miss. Valley St. (11/30/96)..... | 36 |
| DeAnn Craft vs. Tulane (1/18/87)..... | 36 |
| Kristy Burns vs. Mercer (2/6/86)..... | 36 |
| Dorine VanTongeren vs. St. Leo (2/10/84)..... | 36 |

Most Rebounds

| | |
|---|----|
| 1. Destiny Thomas vs Seton Hall (12/11/22)..... | 24 |
| Brittni Montgomery at Iona (12/14/14)..... | 24 |
| Brittni Montgomery at FAU (12/13/13)..... | 24 |
| Erika Jones vs. South Alabama (11/12/11)..... | 24 |
| 5. Tari Phillips vs. Texas Pan-Am (2/7/91)..... | 23 |
| 6. Marni Schmidt vs. Cheney (1/16/88)..... | 22 |
| 7. Brittni Montgomery vs. Akron (12/17/14)..... | 21 |
| Tamika Coley vs. Jacksonville St. (3/2/96)..... | 21 |
| 9. Destiny Thomas vs Cincinnati (2/25/23)..... | 20 |
| Tolulope Omokore vs SMU (2/20/16)..... | 20 |
| Erika Jones vs. East Carolina (1/5/12)..... | 20 |
| Emma Cannon at Memphis (1/8/09)..... | 20 |
| Emma Cannon at SMU (2/7/09)..... | 20 |
| Emma Cannon vs. Memphis (1/15/10)..... | 20 |
| Shantrice Saxon vs. Miss. Valley St.(11/30/96)..... | 20 |
| Tamika Coley vs. Ga. Southern (12/3/94)..... | 20 |
| Tamika Coley vs. Florida Atlantic (2/22/94)..... | 20 |
| Sonya Manley vs. Livingston (3/6/80)..... | 20 |
| Cynthia Jacobs vs. Florida (1/25/78)..... | 20 |

Most Assists

| | |
|---|----|
| 1. Karen Harvey vs. Rollins (2/23/84)..... | 16 |
| 2. Julie Cardinale vs. Marist (1/8/86)..... | 15 |
| 3. Vivian Weaver vs. UAB (2/11/91)..... | 14 |
| Tracey Stowe vs. FIU (1/13/90)..... | 14 |
| Julie Cardinale vs. South Carolina (2/17/86)..... | 14 |
| 6. Aisha Patrick vs. East Carolina (1/29/09)..... | 13 |
| Four others tied with..... | 13 |

Most Steals

| | |
|--|----|
| 1. Anita Terlecky vs. Florida A&M (2/22/88)..... | 10 |
| Terri Jo Wendt vs. Miami (12/4/86)..... | 10 |
| Rochelle Lee vs. Delaware State (12/28/84)..... | 10 |
| 4. LaShay King at Troy (12/11/05)..... | 9 |
| Andrea Jackson vs. Rollins (2/12/82)..... | 9 |
| 6. Seven tied with..... | 8 |

Most Blocks

| | |
|--|----|
| 1. Meg Schuler vs. Livingston (3/14/82)..... | 11 |
| 2. Shelby Weber vs. Colgate (12/18/04)..... | 8 |
| 3. Ali Roberts vs. Gardner-Webb (2/17/05)..... | 7 |
| Shelby Weber at Jacksonville (1/29/05)..... | 7 |
| Ali Roberts vs. Jacksonville (2/21/02)..... | 7 |
| Ali Roberts at North Texas (12/17/01)..... | 7 |
| Shannon King vs. Coastal Carolina (12/29/88)..... | 7 |
| 8. Stephanie Taylor vs. Presbyterian (12/17/12)..... | 6 |
| Adrienne Billings vs. TAMUCC (12/21/02)..... | 6 |
| Ali Roberts vs. Stetson (2/23/02)..... | 6 |
| Ali Roberts at Florida Atlantic (1/9/02)..... | 6 |
| Meg Schuler vs. Flagler (1/16/82)..... | 6 |

Most Free Throws Made

| | |
|--|----|
| 1. Kay Kay Wright vs. Pacific (12/17/18)..... | 16 |
| 2. Chariya Davis vs. Stetson (3/4/99)..... | 14 |
| Meg Fahey vs. Wright State (1/15/81)..... | 14 |
| 4. Aisha Patrick vs. So. Miss (2/16/12)..... | 13 |
| Aisha Patrick vs. UAB (1/13/11)..... | 13 |
| Fahey vs. Miami (2/6/81)..... | 13 |
| 7. Aliyah Gregory vs. Cincinnati (1/24/17)..... | 12 |
| Briahanna Jackson vs. Memphis (2/10/13)..... | 12 |
| Aisha Patrick vs. ECU (1/5/12)..... | 12 |
| Chelsie Wiley vs. UAB (3/1/09)..... | 12 |
| Dorine VanTongeren vs. St. Leo (2/10/84)..... | 12 |
| Dorine VanTongeren vs. W.Carolina (12/4/82)..... | 12 |

Most Three-Point FGs Made

| | |
|---|---|
| 1. Zykira Lewis vs. FAU (11/14/14)..... | 8 |
| Chelsie Wiley vs. Ole Miss (12/20/08)..... | 8 |
| Francine Houston at Memphis (2/17/07)..... | 8 |
| Francine Houston vs. Tulsa (2/4/07)..... | 8 |
| 5. Laila Jewett vs. New Orleans (12/11/23)..... | 7 |
| Chelsie Wiley vs. Marshall (1/31/09)..... | 7 |
| Chelsie Wiley at UTEP (2/24/10)..... | 7 |
| Francine Houston at Marshall (1/20/06)..... | 7 |
| Francine Houston vs. Princeton (11/26/05)..... | 7 |
| Celeste Hudson vs. Campbell (2/19/04)..... | 7 |
| Lanetra Cooks vs. Mississippi (12/22/01)..... | 7 |
| Kelli Ely vs. Samford (2/13/99)..... | 7 |

Most Field Goals Made

| | |
|--|----|
| 1. Tari Phillips vs. Lamar (2/9/91)..... | 18 |
| Tari Phillips vs. Texas Pan-Am (2/7/91)..... | 18 |
| 3. Kristy Burns vs. Queens (12/30/84)..... | 17 |
| 4. Aliyah Gregory at USF (2/14/17)..... | 15 |
| Tari Phillips vs. Stetson (3/1/91)..... | 15 |
| Kristy Burns vs. Furman (11/29/85)..... | 15 |
| Susan Patz vs. Rollins (2/23/84)..... | 15 |
| Rochelle Lee vs. Eckerd (2/18/84)..... | 15 |
| 9. Eleven tied with..... | 14 |

Most Field Goals Attempted

| | |
|---|----|
| 1. Zakiya Saunders vs. USF (2/18/18)..... | 34 |
| 2. Zykira Lewis vs. Akron (12/17/14)..... | 33 |
| 3. Briahanna Jackson vs. Missouri St. (12/21/12)..... | 30 |
| Anita Terlecky vs. Georgia State (1/11/88)..... | 30 |
| Kristy Burns vs. South Carolina (2/17/86)..... | 30 |
| 6. Zykira Lewis vs. UConn (1/21/15)..... | 29 |
| Tari Phillips vs. Lamar (2/9/91)..... | 29 |
| 8. Tamika Coley vs. Jacksonville State (3/2/96)..... | 28 |
| 9. Aliyah Gregory at Tulsa (2/11/17)..... | 27 |
| Tari Phillips vs. Stetson (3/1/91)..... | 27 |
| Kristy Burns vs. Arkansas (12/13/85)..... | 27 |
| Meg Fahey vs. Flagler (2/26/81)..... | 27 |
| Cindy Frank vs. Flagler (1/31/79)..... | 27 |

Best FG Percentage (Min. 8 Attempts)

| | |
|---|--------------|
| 1. Gayle Blutchter vs. Fla. Southern (2/16/80)..... | 1.000 (8-8) |
| 2. Shelby Weber vs. Memphis (2/19/06)..... | .917 (11-12) |
| 3. Emma Cannon vs. Memphis (1/26/09)..... | .900 (9-10) |
| Christine Strahl vs. Youngstown St. (12/18/85) ... | .900 (9-10) |
| 5. Shelby Weber at UAB (1/29/06)..... | .889 (8-9) |
| 6. Seven others tied with..... | .875 (7-8) |

Most Free Throws Attempted

| | |
|---|----|
| 1. Gayle Blutchter vs. Florida (2/16/81)..... | 19 |
| 2. Meg Fahey vs. Miami (2/6/81)..... | 18 |
| 3. Briahanna Jackson vs. Memphis (2/10/13)..... | 17 |
| Gayle Blutchter vs. Stetson (12/15/80)..... | 17 |
| 5. Kay Kay Wright vs. Pacific (12/17/18)..... | 16 |
| Chariya Davis vs. Stetson (3/4/99)..... | 16 |
| Tamika Coley vs. Ga. Southern (12/3/94)..... | 16 |
| Meg Fahey vs. Wright State (1/15/81)..... | 16 |
| 9. Erika Jones vs. UTEP (2/17/13)..... | 15 |
| Aisha Patrick vs. ECU (1/5/12)..... | 15 |
| Aisha Patrick vs. UAB (1/13/11)..... | 15 |
| LaDonna Larry vs. Radford (7/21/97)..... | 15 |
| Anita Terlecky vs. Georgia State (1/11/88)..... | 15 |
| Gayle Blutchter vs. Florida State (12/12/80)..... | 15 |

Best FT Percentage (Min. 9 Attempts)

| | |
|---|--------|
| 1. Nine tied with..... | 1.000 |
| Aliyah Gregory vs. Cincinnati (1/24/17)..... | .12-12 |
| Chelsie Wiley vs. FAU(11/22/08)..... | 10-10 |
| Kelli Ely vs. Stetson (2/20/99)..... | 10-10 |
| Missy Briscoe vs. LSU (12/19/92)..... | 10-10 |
| DeAnn Craft vs. W. Michigan (11/29/86)..... | 10-10 |
| Karen Harvey vs. FSU (12/5/83)..... | 10-10 |
| Meg Fahey vs. St. Leo (1/29/80)..... | 10-10 |
| Shelby Weber at UAB (1/29/06)..... | 9-9 |
| Dorine VanTongeren vs. Rollins (2/20/84)..... | 9-9 |

Best 3FG Percentage (Min. 6 Attempts)

| | |
|--|-------------|
| 1. Chelsie Wiley vs. Ole Miss (12/20/08)..... | .889 (8-9) |
| 2. Georgia Gayle vs. ECU (1/5/20)..... | .857 (6-7) |
| 3. Sianni Martin vs. Pitt (11/6/19)..... | .833 (5-6) |
| 4. Zykira Lewis vs. FAU (11/14/14)..... | .800 (8-10) |
| Francine Houston vs. Tulsa (2/4/07)..... | .800 (8-10) |
| 6. Chelsie Wiley vs. Marshall (1/31/09)..... | .778 (7-9) |
| 7. Celeste Hudson at Georgia State (2/10/05) ... | .750 (6-8) |
| Lanetra Cooks vs. Jacksonville St. (3/2/02) ... | .750 (6-8) |
| 9. Francine Houston vs. Belmont (12/2/04)..... | .714 (5-7) |
| 10. Chelsie Wiley at UTEP (1/24/10)..... | .700 (7-10) |

Most 3FGs Attempted

| | |
|--|----|
| 1. Lanetra Cooks vs. Campbell (1/24/02)..... | 18 |
| 2. Zykira Lewis vs. UConn (1/21/15)..... | 16 |
| Francine Houston at Memphis (2/17/07)..... | 16 |
| Francine Houston vs. Marshall (1/20/06)..... | 16 |
| 5. Zykira Lewis vs. Akron (17/17/14)..... | 15 |
| Francine Houston vs. SMU (3/1/07)..... | 15 |
| Priscilla Smith vs. FIU (1/7/95)..... | 15 |
| Sherry Asplen vs. UNC (11/28/87)..... | 15 |
| 9. Sydnee McDonald at Tulane (2/13/19)..... | 14 |
| 10. Briahanna Jackson vs. Missouri St. (11/21/12)..... | 13 |
| Darlys Tsinnie vs. FIU (1/23/93)..... | 13 |

Bold = current player

NCAA STATISTICAL RANKINGS

| Statistic | National Conference | | Value National Leader | | Value Conference Leader | |
|---|---------------------|------|-----------------------|------------------------|-------------------------|---------------------|
| | Rank | Rank | Value | Leader | Value | Leader |
| Assist/Turnover Ratio (348 ranked) | 268 | 13 | 0.66 | Michigan St. | 1.79 | Kansas St. |
| Assists Per Game (348 ranked) | 240 | 12 | 12.1 | Utah | 22.4 | Baylor |
| Bench Points Per Game (348 ranked) | 299 | 12 | 13.5 | Murray St. | 42.8 | Texas |
| Blocks Per Game (348 ranked) | 260 | 13 | 2.4 | South Carolina | 9.3 | Kansas St. |
| Field Goal Percentage (348 ranked) | 141 | 11 | 41.7 | Indiana | 51.5 | Texas |
| Field Goal Percentage Defense (348 ranked) | 61 | 4 | 37.0 | South Carolina | 29.3 | Kansas St. |
| Fouls Per Game (348 ranked) | 187 | 8 | 17.0 | Dartmouth | 9.6 | Iowa St. |
| Free Throw Attempts Per Game (348 ranked) | 137 | 10 | 17.43 | LSU | 30.44 | Texas |
| Free Throw Percentage (348 ranked) | 75 | 2 | 74.2 | Creighton | 83.1 | Texas Tech |
| Free Throws Made Per Game (348 ranked) | 102 | 7 | 12.93 | LSU | 22.56 | Cincinnati |
| Rebound Margin (348 ranked) | 39 | 6 | 7.8 | UCLA | 19.5 | Texas |
| Rebounds (Defensive) Per Game (348 ranked) | 99 | 7 | 26.9 | South Carolina | 35.5 | Iowa St. |
| Rebounds (Offensive) Per Game (348 ranked) | 107 | 7 | 12.9 | Ga. Southern | 19.7 | Texas |
| Rebounds Per Game (348 ranked) | 89 | 9 | 39.71 | Ga. Southern | 50.53 | Oklahoma |
| Scoring Defense (348 ranked) | 60 | 6 | 57.7 | Texas A&M | 48.9 | Kansas St. |
| Scoring Margin (348 ranked) | 113 | 10 | 8.1 | South Carolina | 38.3 | Texas |
| Scoring Offense (348 ranked) | 181 | 13 | 65.8 | LSU | 94.2 | Texas |
| Steals Per Game (348 ranked) | 247 | 10 | 7.0 | West Virginia | 14.8 | West Virginia |
| Three Point Attempts Per Game (348 ranked) | 298 | 13 | 15.4 | Utah | 30.4 | Oklahoma |
| Three Point Percentage (348 ranked) | 79 | 7 | 34.3 | South Carolina | 41.9 | Iowa St. |
| Three Point Percentage Defense (348 ranked) | 69 | 8 | 27.6 | Campbell | 21.7 | Kansas St. |
| Three Pointers Per Game (348 ranked) | 226 | 12 | 5.3 | Utah | 12.1 | TCU |
| Turnover Margin (348 ranked) | 270 | 12 | -2.21 | West Virginia | 9.80 | West Virginia |
| Turnovers Forced Per Game (348 ranked) | 195 | 9 | 16.14 | East Carolina | 26.00 | West Virginia |
| Turnovers Per Game (348 ranked) | 278 | 14 | 18.4 | Colorado St. | 8.6 | TCU |
| Winning Percentage (348 ranked) | 117 | 10 | 64.3 | South Carolina UCLA | 100.0 100.0 | Kansas St. Texas |

| | | | | | | | | |
|---|----------------------------------|-----------|---------|----------------|---|--------------|---|--------------|
| Assist/Turnover Ratio (250 ranked) | Laila Jewett | 140 | 14 | 1.62 | Kiara Jackson, UNLV | 4.17 | Taryn Sides, Kansas St. | 4.11 |
| Assists (146 ranked) | | | | | Caitlin Clark, Iowa | 131 | Jaden Owens, TCU | 115 |
| Assists Per Game (246 ranked) | Laila Jewett | 224 | 15 | 3.4 | McKenna Hofschild, Colorado St. | 8.6 | Jaden Owens, TCU | 7.2 |
| Blocks (138 ranked) | | | | | Josie Hill, Chicago St. | 60 | Sedona Prince, TCU | 46 |
| Blocks Per Game (245 ranked) | | | | | Lucy Cochrane, Portland | 3.80 | Sedona Prince, TCU | 3.29 |
| Double Doubles (50 ranked) | | | | | Lauren Gustin, BYU | 15 | Lauren Gustin, BYU | 15 |
| Field Goal Attempts (145 ranked) | Kaitlin Peterson | 20 | 2 | 248 | Caitlin Clark, Iowa | 375 | Madison Conner, TCU | 287 |
| Field Goal Percentage (250 ranked) | | | | | Lauren Betts, UCLA | 70.9 | Taylor Jones, Texas | 69.0 |
| Field Goals (145 ranked) | Kaitlin Peterson | 62 | 5 | 97 | Caitlin Clark, Iowa | 181 | Ayoka Lee, Kansas St. | 141 |
| Free Throw Attempts (141 ranked) | Kaitlin Peterson | 42 | 4 | 82 | Angel Reese, LSU | 118 | Bailey Maupin, Texas Tech | 98 |
| Free Throw Percentage (248 ranked) | | | | | Mara Braun, Minnesota | 94.0 | Bailey Maupin, Texas Tech Laila Blair, Houston | 85.7 85.7 |
| Free Throws (139 ranked) | Kaitlin Peterson | 57 | 4 | 58 | Tess Heal, Santa Clara | 94 | Bailey Maupin, Texas Tech | 84 |
| Minutes Per Game (150 ranked) | Kaitlin Peterson Laila Jewett | 22 115 | 2 10 | 36.08 33.56 | Megan McConnell, Duquesne | 38.35 | Lauren Gustin, BYU | 36.26 |
| Points (198 ranked) | Kaitlin Peterson | 32 | 4 | 288 | Caitlin Clark, Iowa | 527 | Madison Conner, TCU | 358 |
| Points Per Game (247 ranked) | Kaitlin Peterson | 18 | 3 | 20.6 | Caitlin Clark, Iowa | 31.0 | Sedona Prince, TCU | 21.2 |
| Rebounds (149 ranked) | Achol Akot | 75 | 8 | 124 | Lauren Gustin, BYU | 269 | Lauren Gustin, BYU | 269 |
| Rebounds (Defensive) Per Game (30 ranked) | | | | | Lauren Gustin, BYU Saylor Poffenbarger, Arkansas | 10.7 10.7 | Lauren Gustin, BYU | 10.7 |
| Rebounds (Offensive) Per Game (30 ranked) | | | | | Christina Dalce, Villanova | 5.7 | Lauren Gustin, BYU | 5.1 |
| Rebounds Per Game (250 ranked) | Achol Akot | 59 | 5 | 8.9 | Lauren Gustin, BYU | 15.8 | Lauren Gustin, BYU | 15.8 |
| Steals (137 ranked) | | | | | Hannah Hidalgo, Notre Dame | 74 | Ja'Naiya Quinerly, West Virginia | 48 |
| Steals Per Game (243 ranked) | | | | | Hannah Hidalgo, Notre Dame | 5.69 | Ja'Naiya Quinerly, West Virginia | 3.20 |
| Three Point Attempts (148 ranked) | Kaitlin Peterson | 65 | 4 | 99 | Caitlin Clark, Iowa | 212 | Madison Conner, TCU | 174 |
| Three Point Percentage (172 ranked) | Kaitlin Peterson | 106 | 7 | 36.4 | Te-Hina Paopao, South Carolina | 55.2 | Kailey Woolston, BYU | 47.9 |
| Three Pointers (143 ranked) | Kaitlin Peterson | 65 | 4 | 36 | Caitlin Clark, Iowa | 85 | Madison Conner, TCU | 70 |
| Three Pointers Per Game (246 ranked) | Kaitlin Peterson | 53 | 4 | 2.57 | Caitlin Clark, Iowa | 5.00 | Madison Conner, TCU | 4.12 |
| Triple Doubles (5 ranked) | | | | | Caitlin Clark, Iowa | 4 | | |

UCF 2023-24 SEASON STATS

Game Records

| Record | Overall | Home | Away | Neutral |
|----------------|---------|------|------|---------|
| ALL GAMES | 9-5 | 6-3 | 0-2 | 3-0 |
| CONFERENCE | 0-4 | 0-2 | 0-2 | 0-0 |
| NON-CONFERENCE | 9-1 | 6-1 | 0-0 | 3-0 |

Team Box Score

| No. | Player | | | | Total | | 3-Point | | F-Throw | | Rebounds | | | | | | | | | | | |
|------------------|-------------------------|-----------|-------------|------|----------------|-------------|---------------|-------------|----------------|-------------|------------|------------|------------|-------------|------------|----------|------------|------------|-----------|------------|------------|-------------|
| | | GP-GS | MIN | AVG | FG-FGA | FG% | 3FG-3FGA | 3FG% | FT-FTA | FT% | OFF | DEF | TOT | AVG | PF | DQ | A | TO | BLK | STL | PTS | AVG |
| 3 | PETERSON, Kaitlin | 14-14 | 505:11 | 36.1 | 97-248 | .391 | 36-99 | .364 | 58-82 | .707 | 16 | 45 | 61 | 4.4 | 19 | 0 | 17 | 26 | 1 | 24 | 288 | 20.6 |
| 10 | BURNS, Mya | 14-14 | 403:19 | 28.8 | 48-122 | .393 | 9-35 | .257 | 31-37 | .838 | 22 | 33 | 55 | 3.9 | 36 | 1 | 17 | 36 | 7 | 13 | 136 | 9.7 |
| 0 | JEWETT, Laila | 14-14 | 469:47 | 33.6 | 46-102 | .451 | 22-42 | .524 | 16-19 | .842 | 4 | 35 | 39 | 2.8 | 23 | 0 | 47 | 29 | 0 | 16 | 130 | 9.3 |
| 11 | AKOT, Achol | 14-14 | 347:04 | 24.8 | 48-89 | .539 | 0-0 | .000 | 18-32 | .563 | 48 | 76 | 124 | 8.9 | 41 | 3 | 23 | 46 | 7 | 11 | 114 | 8.1 |
| 24 | KELLY, Jayla | 14-13 | 267:09 | 19.1 | 24-52 | .462 | 0-1 | .000 | 21-31 | .677 | 20 | 48 | 68 | 4.9 | 44 | 3 | 7 | 34 | 7 | 8 | 69 | 4.9 |
| 15 | GIBSON, Taylor | 13-0 | 189:26 | 14.6 | 20-44 | .455 | 0-5 | .000 | 12-12 | 1.000 | 9 | 19 | 28 | 2.2 | 15 | 0 | 2 | 11 | 7 | 2 | 52 | 4.0 |
| 35 | NGODU, Khyala | 13-0 | 172:00 | 13.2 | 18-36 | .500 | 0-0 | .000 | 10-11 | .909 | 18 | 40 | 58 | 4.5 | 22 | 2 | 9 | 15 | 2 | 9 | 46 | 3.5 |
| 30 | ROBINSON-NWAGWU, Morgan | 12-0 | 115:38 | 9.6 | 15-30 | .500 | 2-8 | .250 | 7-11 | .636 | 10 | 14 | 24 | 2.0 | 12 | 0 | 12 | 8 | 1 | 5 | 39 | 3.3 |
| 21 | WARE, Timia | 10-1 | 144:48 | 14.5 | 8-39 | .205 | 3-15 | .200 | 6-7 | .857 | 3 | 17 | 20 | 2.0 | 12 | 0 | 13 | 17 | 0 | 4 | 25 | 2.5 |
| 14 | TODD, Asia | 8-0 | 44:23 | 5.5 | 8-17 | .471 | 2-6 | .333 | 0-0 | .000 | 1 | 6 | 7 | 0.9 | 6 | 0 | 2 | 8 | 0 | 2 | 18 | 2.3 |
| 22 | GODBOLT, Sierra | 13-0 | 90:24 | 7.0 | 1-12 | .083 | 0-1 | .000 | 2-2 | 1.000 | 1 | 2 | 3 | 0.2 | 5 | 0 | 11 | 9 | 0 | 3 | 4 | 0.3 |
| 25 | FUNEUS, Femi | 1-0 | 01:59 | 2.0 | 0-0 | .000 | 0-0 | .000 | 0-0 | .000 | 0 | 1 | 1 | 1.0 | 1 | 0 | 0 | 1 | 0 | 0 | 0 | 0.0 |
| 42 | MCMILLAN, Mary | 5-0 | 48:53 | 9.8 | 0-7 | .000 | 0-4 | .000 | 0-0 | .000 | 0 | 3 | 3 | 0.6 | 2 | 0 | 9 | 4 | 1 | 1 | 0 | 0.0 |
| Team | | | | | | | | | | | 28 | 37 | 65 | | | | 13 | | | | | |
| Total | | 14 | 2800 | | 333-798 | .417 | 74-216 | .343 | 181-244 | .742 | 180 | 376 | 556 | 39.7 | 238 | 9 | 169 | 257 | 33 | 98 | 921 | 65.8 |
| Opponents | | 14 | 2800 | | 297-802 | .370 | 68-246 | .276 | 146-219 | .667 | 148 | 299 | 447 | 31.9 | 248 | 4 | 137 | 226 | 51 | 117 | 808 | 57.7 |

Score by Periods

| Team | 1st | 2nd | 3rd | 4th | OT | TOT |
|-----------|-----|-----|-----|-----|----|-----|
| UCF | 209 | 201 | 252 | 259 | 0 | 921 |
| Opponents | 191 | 205 | 204 | 208 | 0 | 808 |

UCF 2023-24 CONFERENCE-ONLY STATS
Game Records

| Record | Overall | Home | Away | Neutral |
|----------------|---------|------|------|---------|
| ALL GAMES | 0-4 | 0-2 | 0-2 | 0-0 |
| CONFERENCE | 0-4 | 0-2 | 0-2 | 0-0 |
| NON-CONFERENCE | 0-0 | 0-0 | 0-0 | 0-0 |

Team Box Score

| No. | Player | Total | | | 3-Point | | F-Throw | | Rebounds | | | | Other Stats | | | | | | | | | |
|------------------|-------------------------|----------|------------|------|----------------|-------------|--------------|-------------|--------------|-------------|-----------|-----------|-------------|-------------|-----------|----------|-----------|-----------|-----------|-----------|------------|-------------|
| | | GP-GS | MIN | AVG | FG-FGA | FG% | 3FG-3FGA | 3FG% | FT-FTA | FT% | OFF | DEF | TOT | AVG | PF | DQ | A | TO | BLK | STL | PTS | AVG |
| 3 | PETERSON, Kaitlin | 4-4 | 152:28 | 38.1 | 31-82 | .378 | 9-29 | .310 | 22-32 | .688 | 6 | 14 | 20 | 5.0 | 7 | 0 | 8 | 13 | 0 | 6 | 93 | 23.3 |
| 11 | AKOT, Achol | 4-4 | 109:42 | 27.4 | 14-24 | .583 | 0-0 | .000 | 6-10 | .600 | 11 | 15 | 26 | 6.5 | 11 | 1 | 1 | 14 | 2 | 1 | 34 | 8.5 |
| 0 | JEWETT, Laila | 4-4 | 117:51 | 29.5 | 10-31 | .323 | 3-12 | .250 | 6-8 | .750 | 1 | 9 | 10 | 2.5 | 11 | 0 | 9 | 6 | 0 | 2 | 29 | 7.3 |
| 10 | BURNS, Mya | 4-4 | 104:08 | 26.0 | 10-26 | .385 | 4-8 | .500 | 2-3 | .667 | 1 | 12 | 13 | 3.3 | 14 | 0 | 5 | 9 | 2 | 5 | 26 | 6.5 |
| 30 | ROBINSON-NWAGWU, Morgan | 3-0 | 72:04 | 24.0 | 7-17 | .412 | 1-5 | .200 | 1-4 | .250 | 7 | 8 | 15 | 5.0 | 6 | 0 | 9 | 3 | 1 | 3 | 16 | 5.3 |
| 35 | NGODU, Khyala | 4-0 | 62:10 | 15.5 | 5-9 | .556 | 0-0 | .000 | 6-6 | 1.000 | 5 | 14 | 19 | 4.8 | 8 | 1 | 1 | 2 | 0 | 3 | 16 | 4.0 |
| 24 | KELLY, Jayla | 4-4 | 61:59 | 15.5 | 3-11 | .273 | 0-0 | .000 | 5-9 | .556 | 3 | 7 | 10 | 2.5 | 12 | 1 | 1 | 9 | 1 | 2 | 11 | 2.8 |
| 15 | GIBSON, Taylor | 3-0 | 43:53 | 14.6 | 3-7 | .429 | 0-1 | .000 | 1-1 | 1.000 | 1 | 4 | 5 | 1.7 | 4 | 0 | 0 | 3 | 4 | 0 | 7 | 2.3 |
| 25 | FUNEUS, Femi | 1-0 | 01:59 | 2.0 | 0-0 | .000 | 0-0 | .000 | 0-0 | .000 | 0 | 1 | 1 | 1.0 | 1 | 0 | 0 | 1 | 0 | 0 | 0 | 0.0 |
| 42 | MCMILLAN, Mary | 4-0 | 30:56 | 7.7 | 0-6 | .000 | 0-4 | .000 | 0-0 | .000 | 0 | 2 | 2 | 0.5 | 1 | 0 | 5 | 3 | 0 | 1 | 0 | 0.0 |
| 21 | WARE, Timia | 2-0 | 18:24 | 9.2 | 0-4 | .000 | 0-0 | .000 | 0-0 | .000 | 0 | 1 | 1 | 0.5 | 1 | 0 | 0 | 1 | 0 | 0 | 0 | 0.0 |
| 14 | TODD, Asia | 3-0 | 12:53 | 4.3 | 0-2 | .000 | 0-0 | .000 | 0-0 | .000 | 0 | 1 | 1 | 0.3 | 0 | 0 | 0 | 1 | 0 | 0 | 0 | 0.0 |
| 22 | GODBOLT, Sierra | 4-0 | 11:32 | 2.9 | 0-2 | .000 | 0-0 | .000 | 0-0 | .000 | 0 | 0 | 0 | 0.0 | 0 | 0 | 1 | 4 | 0 | 0 | 0 | 0.0 |
| Team | | | | | | | | | | | 4 | 7 | 11 | | | | | 3 | | | | |
| Total | | 4 | 800 | | 83-221 | .376 | 17-59 | .288 | 49-73 | .671 | 39 | 95 | 134 | 33.5 | 76 | 3 | 40 | 72 | 10 | 23 | 232 | 58.0 |
| Opponents | | 4 | 800 | | 104-237 | .439 | 22-78 | .282 | 43-65 | .662 | 39 | 94 | 133 | 33.3 | 67 | 1 | 56 | 54 | 22 | 33 | 273 | 68.3 |

Score by Periods

| Team | 1st | 2nd | 3rd | 4th | OT | TOT |
|-----------|-----|-----|-----|-----|----|-----|
| UCF | 58 | 36 | 62 | 76 | 0 | 232 |
| Opponents | 67 | 59 | 69 | 78 | 0 | 273 |



#0 LAILA JEWETT

JUNIOR | GUARD

5-10 | Woodbridge, Va. | Bishop Ireton HS

SOPHOMORE (2022-23)

- Appeared in all 29 games as a sophomore, earning the starting nod 16 times
- Recorded a career-high 34 points against Samford (11/26) to earn a spot on The American Honor Roll on Nov. 28
- Her 34 points came via 56 percent shooting from the field (9-16), including six made triples on 10 tries from beyond the arc
- Earned her first college start in the season opener against Winthrop (11/07), accounting for nine points and two steals
- Pulled down a career-high nine rebounds against Louisiana-Monroe (11/22)
- Closed out the season with 11 games in double figures
- Went 6-6 from the charity stripe against Idaho State (12/20)
- Tallied 20 points against Tulsa in the AAC Tournament, going 7-13 from the field and 3-4 from behind the arc

FRESHMAN (2021-22)

- Appeared in nine games as a freshman
- Scored her first career points in her home state of Virginia, hitting her lone three-point attempt against the Cavaliers (11/17)
- Played a season-high 7:35 at Wichita State (2/16)
- Pulled down two rebounds with two assists in four minutes at Temple (2/19)
- Dished out an assist in nearly four minutes of action in the American Athletic Conference Tournament semifinal game against SMU (3/9)

HIGH SCHOOL

- ESPN four-star recruit while placing her 84th in its top 100
- Fifth-ranked overall player in the Virginia 2021 player rankings
- Named first team All-Washington Catholic Athletic Conference as a junior
- Member of the Beta Club, prepares today's students to be tomorrow's leaders
- Member of 2019 Nike National Championship Team
- Nike Elite Youth Basketball League Takeover squad under Ron James

PERSONAL

- Majoring in information technology
- Daughter of Kina and James Franklin
- Born August 22

SINGLE GAME HIGHS

| | <i>Season</i> | <i>Career</i> |
|-------|-------------------------------------|----------------------------------|
| Pts. | 21 - vs New Orleans (12/11/23) | 34 - vs Samford (11/26/22) |
| Reb. | 5 - vs Anderson (11/13/23) | 9 - vs ULM (11/22/22) |
| Ast. | 7 - vs Sacred Heart (11/25/23) | 7 - vs Sacred Heart (11/25/23) |
| Stls. | 3 - vs Anderson (11/13/23) | 3 - vs Samford (11/26/22) |
| Blk. | | 1 - vs Texas Southern (12/30/22) |
| FGM | 7 - vs New Orleans (12/11/23) | 11 - vs Samford (11/26/22) |
| FGA | 12 - vs Bethune-Cookman (11/6/23) | 19 - vs Samford (11/26/22) |
| 3FGM | 7 - vs New Orleans (12/11/23) | 7 - vs New Orleans (12/11/23) |
| 3FGA | 10 - vs New Orleans (12/11/23) | 10 - vs Tulsa (1/7/23) |
| FTM | 2 - vs Morgan State (12/19/23) | 7 - at Auburn (12/3/22) |
| FTA | 2 - vs Morgan State (12/19/23) | 8 - at Auburn (12/3/22) |
| Min. | 40 - vs Florida Atlantic (12/18/23) | 43 - vs Samford (11/26/22) |

Career Stats

| SEASON | TEAM | GP-GS | MIN/AVG | Field Goals | | 3-Point | | F-Throws | | Rebounds | | | | Scoring | | | | | | |
|--------------|------|--------------|------------------|----------------|-------------|---------------|-------------|--------------|-------------|-----------|------------|------------|------------|-------------|------------|------------|----------|-----------|------------|------------|
| | | | | FG-FGA | FG% | 3FG-3FGA | 3FG% | FT-FTA | FT% | OFF | DEF | TOT | AVG | PF-FO | A | TO | BLK | STL | PTS | AVG |
| 2021-22 | UCF | 9-0 | 26/2.9 | 2-7 | .286 | 1-5 | .200 | 3-4 | .750 | 1 | 3 | 4 | 0.4 | 0-0 | 4 | 2 | 0 | 2 | 8 | 0.9 |
| 2022-23 | UCF | 29-16 | 799/27.5 | 79-258 | .306 | 42-125 | .336 | 43-56 | .768 | 6 | 84 | 90 | 3.1 | 53-0 | 65 | 77 | 1 | 27 | 243 | 8.4 |
| 2023-24 | UCF | 14-14 | 470/33.6 | 46-102 | .451 | 22-42 | .524 | 16-19 | .842 | 4 | 35 | 39 | 2.8 | 23-0 | 47 | 29 | 0 | 16 | 130 | 9.3 |
| TOTAL | | 52-30 | 1295/24.9 | 127-367 | .346 | 65-172 | .378 | 62-79 | .785 | 11 | 122 | 133 | 2.6 | 76-0 | 116 | 108 | 1 | 45 | 381 | 7.3 |



#3 KAITLIN PETERSON

JUNIOR | GUARD

5-9 | Eufaula, Ala. | Eufaula HS / Indiana

QUICK NOTES

SOPHOMORE AT INDIANA (2022-23)

- Appeared in six games before transferring mid-year to UCF
- Played a career-high 18 minutes against UMass Lowell (11/11)
- Recorded 24 points and five rebounds on the season

FRESHMAN AT INDIANA (2021-22)

- Played in 21 games off the bench
- Averaged 5.6 minutes per outing
- Had a bucket in the season opener at Butler
- Chipped in five points, three assists and a rebound against Fairfield
- Played 13 minutes at Wisconsin where she added five points and season-high two rebounds
- Recorded a season-high 11 points while hitting three three-pointers at Illinois
- Played a season-high 19 minutes against the Illini
- Scored in the NCAA Championship first round against Charlotte where she played six minutes

HIGH SCHOOL

- Scored 2,967 points in her career at Eufaula High School in Alabama
- Four-time Alabama Sports Writers Association all-state selection
- Also recorded 591 rebounds, 588 steals and 492 assists in her career
- Averaged 25.0 points per game as a senior to go along with 5.7 steals, 4.9 assists and 3.9 rebounds per game
- Shot 58.4 percent from the floor as a senior to help Eufaula to a 26-4 overall record
- Named a 2021 Alabama All-Star
- As a junior in 2019-20, she averaged 23.7 points, 7.1 rebounds, 6.0 assists and 5.5 steals per game as she was named the Dothan Eagle Player of the Year and led Eufaula to a 25-7 overall record and 6A Southeast Regional Tournament appearance
- Rated as the No. 41 overall recruit by All Star Girls Report and No. 54 by Prospects Nation

PERSONAL

- Majoring in human communication
- Daughter of Lasonya Johnson and Kenard and Kathy Peterson
- Has eight siblings
- Born June 12

SINGLE GAME HIGHS

| Season | Career |
|--|------------------------------------|
| Pts. 35 - at Cincinnati (1/10/24) | 35 - at Cincinnati (1/10/24) |
| Reb. 7 - vs Florida Atlantic (12/18/23) | 7 - vs Auburn (11/20/23) |
| Ast. 4 - vs Oklahoma St. (1/3/24) | 4 - vs Oklahoma St. (1/3/24) |
| Stls. 6 - vs Florida Atlantic (12/18/23) | 6 - vs Florida Atlantic (12/18/23) |
| Blk. 1 - vs Sacred Heart (11/25/23) | 1 - at Illinois (2/9/22) |
| FGM 12 - vs Bethune-Cookman (11/6/23) | 12 - vs Bethune-Cookman (11/6/23) |
| FGA 26 - at Cincinnati (1/10/24) | 26 - at Cincinnati (1/10/24) |
| 3FGM 6 - vs Bethune-Cookman (11/6/23) | 6 - vs Bethune-Cookman (11/6/23) |
| 3FGA 14 - vs New Orleans (12/11/23) | 14 - vs New Orleans (12/11/23) |
| FTM 12 - at Cincinnati (1/10/24) | 12 - at Cincinnati (1/10/24) |
| FTA 15 - at Cincinnati (1/10/24) | 15 - at Cincinnati (1/10/24) |
| Min. 40 - at Cincinnati (1/10/24) | 40 - at Cincinnati (1/10/24) |

Career Stats

| SEASON | TEAM | Field Goals | | | | | 3-POINT | | F-TROWS | | Rebounds | | | | Scoring | | | | | |
|----------------------|------|--------------|-----------------|----------------|-------------|---------------|-------------|--------------|-------------|-----------|-----------|-----------|------------|-------------|-----------|-----------|----------|-----------|------------|-------------|
| | | GP-GS | MIN/AVG | FG-FGA | FG% | 3FG-3FGA | 3FG% | FT-FTA | FT% | OFF | DEF | TOT | AVG | PF-FO | A | TO | BLK | STL | PTS | AVG |
| 2021-22 | IND | 21-0 | 115/5.5 | 11-31 | .355 | 4-15 | .267 | 5-14 | .357 | 2 | 6 | 8 | 0.4 | 17-0 | 3 | 6 | 1 | 3 | 31 | 1.5 |
| 2022-23 | IND | 6-0 | 78/13.1 | 11-29 | .379 | 2-12 | .167 | 0-0 | .000 | 1 | 4 | 5 | 0.8 | 3-0 | 4 | 2 | 0 | 8 | 24 | 4.0 |
| 2023-24 | UCF | 14-14 | 505/36.1 | 97-248 | .391 | 36-99 | .364 | 58-82 | .707 | 16 | 45 | 61 | 4.4 | 19-0 | 17 | 26 | 1 | 24 | 288 | 20.6 |
| TOTAL FOR UCF | | 14-14 | 505/36.1 | 97-248 | .391 | 36-99 | .364 | 58-82 | .707 | 16 | 45 | 61 | 4.4 | 19-0 | 17 | 26 | 1 | 24 | 288 | 20.6 |
| TOTAL | | 41-14 | 698/17.0 | 119-308 | .386 | 42-126 | .333 | 63-96 | .656 | 19 | 55 | 74 | 1.8 | 39-0 | 24 | 34 | 2 | 35 | 343 | 8.4 |



#10 MYA BURNS

GRADUATE | GUARD

6-0 | North Augusta, S.C. | Georgia Southern

SENIOR (2022-23)

- Appeared and started in all 29 games
- Recorded a season-high 21 points against Tulsa (3/1), going 3-5 from beyond the arc
- Tallied her second double-double performance with a career-high 13 rebounds and 12 points along with a career-high five blocks against Memphis (2/11)
- Showed out on Senior Day with 20 points in the overtime win against Cincinnati (2/25)
- Ended the season with 12 games in double digits
- Led the team in free-throw shooting percentage going 64-80 (.800), going perfect from the free-throw line seven times
- Registered 12 games with 10 points or more in her first season with the Black and Gold

GEORGIA SOUTHERN (2019-22)

- Spent three seasons (2019-20, 2020-21, 2021-22) at Georgia Southern
- Played in 82 games averaging eight points per game
- Scored a career-high 31 points at Kennesaw State (12/17/21)
- Recorded 27 double-digit scoring games along with six 20+ point games
- 2021-22 Sun Belt Conference Academic Commissioner's List
- Sun Belt Conference Player of the Week (12/14/21)
- 2019-20 and 2020-21 Sun Belt Conference Academic Commissioner's List
- Las Vegas Holiday Hoops Classic All-Tournament Team (12/20/19)

HIGH SCHOOL

- Named South Carolina 4A Region and State Player of the Year at North Augusta High School in South Carolina as a senior in 2018-19
- Helped the Yellowjackets to the 4A state championship three times
- Scored more than 1,000 points in her career
- McDonald's HS All-American honoree
- Named Augusta Chronicle South Carolina Girls Basketball Player of the Year as a senior
- Averaged 17.8 points, 9.9 rebounds, 3.5 assists, 3.5 steals and 2.4 blocks per game during her senior season
- Also competed in volleyball, helping North Augusta HS to the state championship in 2016-17

PERSONAL

- Majoring in interdisciplinary studies MA
- Daughter of Miguel and Michelle Burns
- Has two sisters: Monae and Monica
- Born September 10

SINGLE GAME HIGHS

| | <i>Season</i> | <i>Career</i> |
|-------|------------------------------------|-----------------------------------|
| Pts. | 16 - vs Jackson State (11/23/23) | 31 - at Kennesaw State (12/17/21) |
| Reb. | 11 - vs Anderson (11/13/23) | 13 - at Memphis (2/11/23) |
| Ast. | 3 - at Oklahoma (12/30/23) | 4 - at Furman (11/10/19) |
| Stls. | 2 - at Oklahoma (12/30/23) | 4 - at Georgia St. (1/22/22) |
| Blk. | 2 - vs Florida Atlantic (12/18/23) | 5 - at Memphis (2/11/23) |
| FGM | 6 - vs Anderson (11/13/23) | 10 - at Kennesaw St. (12/17/21) |
| FGA | 21 - vs Anderson (11/13/23) | 21 - vs Anderson (11/13/23) |
| 3FGM | 2 - vs Oklahoma St. (1/3/24) | 4 - vs UT Arlington (1/15/22) |
| 3FGA | 7 - vs Florida Atlantic (12/18/23) | 9 - vs UT Arlington (1/15/22) |
| FTM | 6 - vs Jackson State (11/23/23) | 7 - vs Georgia St. (3/2/22) |
| FTA | 6 - vs Jackson State (11/23/23) | 10 - vs FIU (11/17/21) |
| Min. | 35 - vs St. John's (11/24/23) | 43 - vs Cincinnati (2/25/23) |

Career Stats

| SEASON | TEAM | GP-GS | MIN/AVG | Field Goals | | 3-Point | | F-Throws | | Rebounds | | | | Scoring | | | | | | |
|----------------------|----------------|------------------|-----------------|-------------|----------------|-------------|----------------|-------------|------------|------------|------------|------------|--------------|------------|------------|-----------|------------|-------------|------------|------|
| | | | | FG-FGA | FG% | 3FG-3FGA | 3FG% | FT-FTA | FT% | OFF | DEF | TOT | AVG | PF-FO | A | TO | BLK | STL | PTS | AVG |
| 2019-20 | GS | 30-19 | 563/18.8 | 53-152 | .349 | 18-53 | .340 | 34-53 | .642 | 50 | 58 | 108 | 3.6 | 78-1 | 27 | 45 | 16 | 23 | 158 | 5.3 |
| 2020-21 | GS | 24-21 | 450/18.7 | 68-178 | .382 | 13-52 | .250 | 22-31 | .710 | 41 | 53 | 94 | 3.9 | 53-1 | 15 | 43 | 13 | 28 | 171 | 7.1 |
| 2021-22 | GS | 28-26 | 730/26.1 | 107-284 | .377 | 42-127 | .331 | 71-90 | .789 | 58 | 90 | 148 | 5.3 | 58-2 | 27 | 44 | 14 | 32 | 327 | 11.7 |
| 2022-23 | UCF | 29-29 | 712/24.6 | 86-285 | .302 | 27-84 | .321 | 64-80 | .800 | 48 | 88 | 136 | 4.7 | 78-3 | 28 | 81 | 27 | 36 | 263 | 9.1 |
| 2023-24 | UCF | 14-14 | 403/28.8 | 48-122 | .393 | 9-35 | .257 | 31-37 | .838 | 22 | 33 | 55 | 3.9 | 36-1 | 17 | 36 | 7 | 13 | 136 | 9.7 |
| TOTAL FOR UCF | 43-43 | 1116/25.9 | 134-407 | .329 | 36-119 | .303 | 95-117 | .812 | 70 | 121 | 191 | 4.4 | 114-4 | 45 | 117 | 34 | 49 | 399 | 9.3 | |
| TOTAL | 125-109 | 2858/22.9 | 362-1021 | .355 | 109-351 | .311 | 222-291 | .763 | 219 | 322 | 541 | 4.3 | 303-8 | 114 | 249 | 77 | 132 | 1055 | 8.4 | |



#11 ACHOL AKOT

FRESHMAN | FORWARD

6-1 | Ottawa, Ontario | Capital Courts Academy

HIGH SCHOOL

- Won the Provincial Crown Championships with Capital Courts Academy (equivalent to state championship in the USA)
- Averaged 15 points per game in her senior year
- U18 Ontario Provincial Team selection
- U18 Ontario Provincial Team silver medalist
- Under Armour Become One AAU team
- In Ontario Scholastic Basketball Association playoffs, averaged 12 points and 10 rebounds
- Played internationally in the FIBA World Cup with the U19 Canadian Team.
- Averaged 14.8 minutes, 2.6 points and 5.9 rebounds in the FIBA World Cup

PERSONAL

- Majoring in psychology
- Daughter of Abuk and Garang Ngong
- Born July 30

SINGLE GAME HIGHS

| | <i>Season</i> | <i>Career</i> |
|-------|------------------------------------|------------------------------------|
| Pts. | 14 - vs Campbell (12/3/23) | 14 - vs Anderson (11/13/23) |
| Reb. | 14 - vs Bethune-Cookman (11/6/23) | 14 - vs Bethune-Cookman (11/6/23) |
| Ast. | 7 - vs Bethune-Cookman (11/6/23) | 7 - vs Bethune-Cookman (11/6/23) |
| Stls. | 2 - vs Florida Atlantic (12/18/23) | 2 - vs Florida Atlantic (12/18/23) |
| Blk. | 3 - vs Bethune-Cookman (11/6/23) | 3 - vs Bethune-Cookman (11/6/23) |
| FGM | 7 - vs Anderson (11/13/23) | 7 - vs Anderson (11/13/23) |
| FGA | 12 - at Oklahoma (12/30/23) | 12 - at Oklahoma (12/30/23) |
| 3FGM | - | - |
| 3FGA | - | - |
| FTM | 4 - vs Campbell (12/3/23) | 3 - vs Bethune-Cookman (11/6/23) |
| FTA | 5 - vs Bethune-Cookman (11/6/23) | 5 - vs Bethune-Cookman (11/6/23) |
| Min. | 32 - vs Campbell (12/3/23) | 32 - vs Campbell (12/3/23) |

Career Stats

| | | Field Goals | | 3-Point | | F-Throws | | Rebounds | | | | Scoring | | | | | | | | |
|--------------|------|--------------|-----------------|--------------|-------------|------------|-------------|--------------|-------------|-----------|-----------|------------|------------|-------------|-----------|-----------|----------|-----------|------------|------------|
| SEASON | TEAM | GP-GS | MIN/AVG | FG-FGA | FG% | 3FG-3FGA | 3FG% | FT-FTA | FT% | OFF | DEF | TOT | AVG | PF-FO | A | TO | BLK | STL | PTS | AVG |
| 2023-24 | UCF | 14-14 | 347/24.8 | 48-89 | .539 | 0-0 | .000 | 18-32 | .563 | 48 | 76 | 124 | 8.9 | 41-3 | 23 | 46 | 7 | 11 | 114 | 8.1 |
| TOTAL | | 14-14 | 347/24.8 | 48-89 | .539 | 0-0 | .000 | 18-32 | .563 | 48 | 76 | 124 | 8.9 | 41-3 | 23 | 46 | 7 | 11 | 114 | 8.1 |



#14 ASIA TODD

GRADUATE | GUARD

5-9 | Clayton, N.C. | Clayton HS / Liberty

SENIOR (2022-23)

- Did not play at UCF due to injury

JUNIOR (2021-22)

- Appeared in one contest while battling injuries
- Hit her lone field-goal attempt against Idaho State at the Cancun Challenge (11/26)

SOPHOMORE (2020-21)

- Appeared in all 21 games, making two starts in her first season as a Knight
- Averaged 2.1 points per game and 1.0 rebounds per game
- Made her UCF debut in the season opener, finishing with two points in 10 minutes against Virginia (11/25)
- Shot 60 percent from the floor (3-5) and 75 percent from beyond the arc (3-4) for nine points against Tulane (12/15)
- Tallied 10 points to go along with five rebounds in just under 21 minutes at Tulsa (12/19)
- Went 3-4 from the field (.750) and 2-3 from three (.667) for eight points in the victory at Tulane (2/17)
- Was a perfect 2-2 from three for six points and three rebounds in The American semifinal win over Houston (3/10)
- Matched her career high with three steals against No. 18 South Florida in The American championship game (3/11)
- Registered one rebound, an assist and a block against Northwestern in the NCAA first round (3/22)

FRESHMAN AT LIBERTY (2019-20)

- Liberty's first Atlantic Sun Conference All-Freshman Team honoree
- ASUN All-Tournament Team member after averaging 18.0 ppg for the championship
- ASUN Newcomer and Freshman of the Week on March 3
- MVP of the Roo Holiday Classic
- Started the last 25 games of the season, and Liberty went 19-6 with her in the starting lineup
- Posted her first of 10 double-digit scoring games against UNCG (11/21), tallying 11 points in her fifth collegiate contest
- Notched 11 of her season-high 24 points during the fourth quarter of the regular-season finale at Kennesaw State (3/2), most points by a Liberty freshman since 2016-17
- Nailed a season-high four triples and finished with 20 points in an ASUN quarterfinal victory over Kennesaw State (3/7), becoming the first Lady Flames freshman with back-to-back 20-point games since 2009-10
- Hit a three-pointer in 10 straight games to end the season

SINGLE GAME HIGHS

| | <i>Season</i> | <i>Career</i> |
|-------|----------------------------------|----------------------------------|
| Pts. | 8 - vs New Orleans (12/11/23) | 24 - at Kennesaw State (3/2/20) |
| Reb. | 4 - vs New Orleans (12/11/23) | 6 - vs Lipscomb (1/18/20) |
| Ast. | 2 - vs New Orleans (12/11/23) | 5 - at Kansas City (12/21/19) |
| Stls. | 1 - vs New Orleans (12/11/23) | 3 - vs. USF (3/11/21) |
| Blk. | | 2 - vs. NJIT (2/5/20) |
| FGM | 4 - vs New Orleans (12/11/23) | 9 - at Kennesaw State (3/2/20) |
| FGA | 7 - vs New Orleans (12/11/23) | 15 - vs Bradley (12/20/19) |
| 3FGM | 2 - vs Bethune-Cookman (11/6/23) | 4 - vs Kennesaw State (3/7/20) |
| 3FGA | 2 - vs Bethune-Cookman (11/6/23) | 5 - 9 times |
| FTM | | 6 - vs UNC Greensboro (11/21/19) |
| FTA | | 8 - vs UNC Greensboro (11/21/19) |
| Min. | 14 - vs New Orleans (12/11/23) | 40 - vs. North Alabama (3/11/20) |

Career Stats

| | | | | Field Goals | | 3-Point | | F-Throws | | Rebounds | | | | Scoring | | | | | | |
|----------------------|------|--------------|------------------|----------------|-------------|---------------|-------------|--------------|-------------|-----------|-----------|------------|------------|-------------|-----------|-----------|----------|-----------|------------|------------|
| SEASON | TEAM | GP-GS | MIN/AVG | FG-FGA | FG% | 3FG-3FGA | 3FG% | FT-FTA | FT% | OFF | DEF | TOT | AVG | PF-FO | A | TO | BLK | STL | PTS | AVG |
| 2019-20 | Lib | 31-25 | 811/26.2 | 97-233 | .416 | 38-92 | .413 | 34-51 | .667 | 21 | 67 | 88 | 2.8 | 54-1 | 40 | 55 | 6 | 22 | 266 | 8.6 |
| 2020-21 | UCF | 21-2 | 207/9.9 | 15-56 | .268 | 10-34 | .294 | 4-6 | .667 | 0 | 20 | 20 | 1.0 | 9-0 | 7 | 14 | 1 | 3 | 44 | 2.1 |
| 2021-22 | UCF | 1-0 | 1/0.8 | 1-1 | 1.000 | 0-0 | .000 | 0-0 | .000 | 0 | 0 | 0 | 0.0 | 0-0 | 0 | 0 | 0 | 0 | 2 | 2.0 |
| 2023-24 | UCF | 8-0 | 44/5.5 | 8-17 | .471 | 2-6 | .333 | 0-0 | .000 | 1 | 6 | 7 | 0.9 | 6-0 | 2 | 8 | 0 | 2 | 18 | 2.3 |
| TOTAL FOR UCF | | 30-2 | 252/8.4 | 24-74 | .324 | 12-40 | .300 | 4-6 | .667 | 1 | 26 | 27 | 0.9 | 15-0 | 9 | 22 | 1 | 5 | 64 | 2.1 |
| TOTAL | | 61-27 | 1063/17.4 | 121-307 | .394 | 50-132 | .379 | 38-57 | .667 | 22 | 93 | 115 | 1.9 | 69-1 | 49 | 77 | 7 | 27 | 330 | 5.4 |



#15 TAYLOR GIBSON

JUNIOR | FORWARD

6-2 | Upper Marlboro, Md. | Michigan

SOPHOMORE (2022-23)

- Appeared in all 29 games as a sophomore, making 14 starts
- Posted her first double-double outing with a career-high 17 points and 10 rebounds against SEMO (11/27)
- Pulled down a career-high 10 rebounds against SEMO (11/27) and Temple (2/21)
- Recorded 32 minutes against East Carolina (2/18) scoring 14 points
- Made her first career triple against Campbell (11/15)

FRESHMAN AT MICHIGAN (2021-22)

- Earned varsity letter at Michigan
- Appeared in three games (St. Francis Brooklyn, Akron and Maryland) off the bench, averaging 0.7 points per game

HIGH SCHOOL

- 2021 Bishop McNamara High School graduate
- National Honor Society member
- Science Honors Society member
- Helped win Washington Catholic Athletic Conference Basketball Championship in 2020
- Averaged 10 points and seven rebounds as a junior
- All-conference honorable mention as a junior

PERSONAL

- Born on November 13
- Daughter of Rick and Tyanne Gibson
- Majoring in human communication, minor in sport business management

SINGLE GAME HIGHS

| | <i>Season</i> | <i>Career</i> |
|-------|--------------------------------|--------------------------------|
| Pts. | 10 - vs Anderson (11/13/23) | 17 - vs SEMO (11/27/22) |
| Reb. | 9 - vs Anderson (11/13/23) | 10 - vs Temple (2/21/23) |
| Ast. | 2 - vs Sacred Heart (11/25/23) | 2 - at East Carolina (2/18/23) |
| Stls. | 1 - vs Anderson (11/13/23) | 2 - at Temple (1/28/23) |
| Blk. | 2 - vs Kansas State (1/6/24) | 2 - at Tennessee (12/14/22) |
| FGM | 4 - vs St. John's (11/24/23) | 6 - vs ULM (11/22/22) |
| FGA | 6 - vs Morgan State (12/19/23) | 16 - vs Samford (11/26) |
| 3FGM | | 1 - at Campbell (11/15/22) |
| 3FGA | 2 - vs Morgan State (12/19/23) | 3 - at Tennessee (12/14/22) |
| FTM | 6 - vs Anderson (11/13/23) | 7 - at Temple (1/28/23) |
| FTA | 6 - vs Anderson (11/13/23) | 8 - at Temple (1/28/23) |
| Min. | 23 - at Cincinnati (1/10/24) | 38 - vs Samford (11/26/22) |

Career Stats

| | | Field Goals | | 3-Point | | F-Throws | | Rebounds | | | | Scoring | | | | | | | | |
|----------------------|------|--------------|-----------------|---------------|-------------|-------------|-------------|--------------|-------------|-----------|-----------|------------|------------|-------------|-----------|-----------|-----------|-----------|------------|------------|
| SEASON | TEAM | GP-GS | MIN/AVG | FG-FGA | FG% | 3FG-3FGA | 3FG% | FT-FTA | FT% | OFF | DEF | TOT | AVG | PF-FO | A | TO | BLK | STL | PTS | AVG |
| 2021-22 | Mich | 3-0 | 4/1.2 | 1-3 | .333 | 0-1 | .000 | 0-0 | .000 | 0 | 0 | 0 | 0.0 | 0-0 | 0 | 0 | 0 | 0 | 2 | 0.7 |
| 2022-23 | UCF | 29-14 | 534/18.4 | 56-159 | .352 | 3-20 | .150 | 43-55 | .782 | 32 | 68 | 100 | 3.4 | 54-2 | 13 | 33 | 12 | 8 | 158 | 5.4 |
| 2023-24 | UCF | 13-0 | 189/14.6 | 20-44 | .455 | 0-5 | .000 | 12-12 | 1.000 | 9 | 19 | 28 | 2.2 | 15-0 | 2 | 11 | 7 | 2 | 52 | 4.0 |
| TOTAL FOR UCF | | 42-14 | 723/17.2 | 76-203 | .374 | 3-25 | .120 | 55-67 | .821 | 41 | 87 | 128 | 3.0 | 69-2 | 15 | 44 | 19 | 10 | 210 | 5.0 |
| TOTAL | | 45-14 | 727/16.1 | 77-206 | .374 | 3-26 | .115 | 55-67 | .821 | 41 | 87 | 128 | 2.8 | 69-2 | 15 | 44 | 19 | 10 | 212 | 4.7 |



#21 TIMIA WARE

JUNIOR | GUARD

5-6 | Chicago, Ill. | Whitney Young Magnet HS / LSU

SOPHOMORE AT LSU (2022-23)

- Appeared in one game against Bellarmine before transferring to UCF mid year

FRESHMAN AT LSU (2021-22)

- Came off the bench and saw action in 17 games for the Tigers during her freshman season
- Scored points in six games
- Had 11 points on Dec. 15 against Alcorn St., the only game she scored in double figures
- Dished out five assists on Dec. 12 against Texas Southern

HIGH SCHOOL

- Ranked as the No. 20 point guard in the nation by ESPNU HoopGurlz and No. 56 overall player by World Exposure Report
- Earned all-state honors as a sophomore and junior by the Illinois Basketball Coaches Association
- Was named to the All-State 4A third team in 2019 and second team in 2020
- Averaged 15.7 points, 7.5 rebounds, 3.6 steals and 3.5 assists per game during the 2019-20 season
- Played in 29 games and had 15.7 points, 7.5 rebounds, 3.5 assists and 3.6 steals per game her junior season
- Also earned IBCA special mention All-State honors as a freshman

PERSONAL

- Majoring in interdisciplinary studies
- Daughter of Tim and Teresa Ware
- Sister of Timya Ware
- Born August 31

SINGLE GAME HIGHS

| | <i>Season</i> | <i>Career</i> |
|-------|-----------------------------------|-----------------------------------|
| Pts. | 9 - vs Bethune-Cookman (11/6/23) | 11 - vs Alcorn (12/15/21) |
| Reb. | 7 - vs Bethune-Cookman (11/6/23) | 7 - vs Bethune-Cookman (11/6/23) |
| Ast. | 5 - vs Bethune-Cookman (11/6/23) | 5 - vs Bethune-Cookman (11/6/23) |
| Stls. | 2 - vs Auburn (11/20/23) | 2 - vs Bradley (12/18/21) |
| Blk. | | 1 - vs Bellarmine (11/7/22) |
| FGM | 2 - vs Anderson (11/13/23) | 5 - vs Alcorn (12/15/21) |
| FGA | 7 - vs Bethune-Cookman (11/6/23) | 10 - vs Alcorn (12/15/21) |
| 3FGM | 2 - vs Bethune-Cookman (11/6/23) | 2 - vs Bethune-Cookman (11/6/23) |
| 3FGA | 5 - vs Bethune-Cookman (11/6/23) | 5 - vs Bethune-Cookman (11/6/23) |
| FTM | 3 - vs Bethune-Cookman (11/6/23) | 3 - vs Bethune-Cookman (11/6/23) |
| FTA | 3 - vs Bethune-Cookman (11/6/23) | 3 - vs Bethune-Cookman (11/6/23) |
| Min. | 30 - vs Bethune-Cookman (11/6/23) | 30 - vs Bethune-Cookman (11/6/23) |

Career Stats

| | | Field Goals | | 3-Point | | F-Throws | | Rebounds | | | | Scoring | | | | | | | | |
|----------------------|------|-------------|-----------------|--------------|-------------|-------------|-------------|-------------|-------------|-----------|-----------|-----------|------------|-------------|-----------|-----------|----------|-----------|-----------|------------|
| SEASON | TEAM | GP-GS | MIN/AVG | FG-FGA | FG% | 3FG-3FGA | 3FG% | FT-FTA | FT% | OFF | DEF | TOT | AVG | PF-FO | A | TO | BLK | STL | PTS | AVG |
| 2021-22 | LSU | 17-0 | 137/8.0 | 15-38 | .395 | 2-11 | .182 | 3-10 | .300 | 6 | 15 | 21 | 1.2 | 12-0 | 12 | 21 | 1 | 8 | 35 | 2.1 |
| 2022-23 | LSU | 1-0 | 5/5.4 | 0-2 | .000 | 0-0 | .000 | 0-0 | .000 | 1 | 0 | 1 | 1.0 | 1-0 | 1 | 1 | 1 | 1 | 0 | 0.0 |
| 2023-24 | UCF | 10-1 | 145/14.5 | 8-39 | .205 | 3-15 | .200 | 6-7 | .857 | 3 | 17 | 20 | 2.0 | 12-0 | 13 | 17 | 0 | 4 | 25 | 2.5 |
| TOTAL FOR UCF | | 10-1 | 145/14.5 | 8-39 | .205 | 3-15 | .200 | 6-7 | .857 | 3 | 17 | 20 | 2.0 | 12-0 | 13 | 17 | 0 | 4 | 25 | 2.5 |
| TOTAL | | 28-1 | 287/10.2 | 23-79 | .291 | 5-26 | .192 | 9-17 | .529 | 10 | 32 | 42 | 1.5 | 25-0 | 26 | 39 | 2 | 13 | 60 | 2.1 |



#22 SIERRA GODBOLT

SOPHOMORE | GUARD

5-6 | Orlando, Fla. | Lake Highland Prep

FRESHMAN (2022-23)

- Appeared in all 29 games as a freshman, making 14 starts
- Recorded a career-high 14 points against Idaho State (12/20)
- Led UCF in assists with 98 and ended at No. 6 in the AAC standings in that category
- Dished out a career-best 10 assists in UCF's 69-53 win over Tulsa in the first round of the AAC Tournament

HIGH SCHOOL

- Three-time state champion with Lake Highland Prep in Orlando
- During her senior season she averaged 4.2 ppg, 1.1 rpg, 3.0 apg and 1.1 spg
- In junior season averaged 7.4 ppg, 3.3 apg and 2.0 spg
- Ran in 4x100, 100, and 200 for Lake Highland Prep track and field team
- Member of National Honor Society and Boys and Girls Club

PERSONAL

- Majoring in health sciences, health promotions track
- Daughter of Tena Waters and Gary Godbolt
- Sister of Sasmon Tavares and Gary Godbolt
- Born November 22

SINGLE GAME HIGHS

| | <i>Season</i> | <i>Career</i> |
|-------|---------------------------------|--------------------------------|
| Pts. | 2 - vs Morgan State (12/19/23) | 14 - vs Idaho State (12/20/22) |
| Reb. | 2 - vs New Orleans (12/11/23) | 3 - vs Winthrop (11/7/22) |
| FGM | 1 - vs Jackson State (11/23/23) | 5 - vs Idaho State (12/20/22) |
| FGA | 3 - vs Campbell (12/3/23) | 9 - vs ULM (11/22/22) |
| 3FGM | | 1 - at SMU (1/3/23) |
| 3FGA | 1 - vs Anderson (11/13/23) | 2 - vs Idaho State (12/20/22) |
| FTM | 2 - vs Morgan State (12/19/23) | 5 - vs Temple (2/21/23) |
| FTA | 2 - vs Morgan State (12/19/23) | 6 - vs Temple (2/21/23) |
| Ast. | 3 - vs Sacred Heart (11/25/23) | 10 - vs Tulsa (3/6/23) |
| Blk. | | 1 - at SMU (1/3/23) |
| Stls. | 2 - vs Anderson (11/13/23) | 4 - vs Elon (12/21/22) |
| Min. | 20 - vs Anderson (11/13/23) | 44 - vs Cincinnati (2/25/23) |

Career Stats

| | | | | Field Goals | | 3-Point | | F-Throws | | Rebounds | | | | Scoring | | | | | | |
|--------------|------|--------------|-----------------|---------------|-------------|-------------|-------------|--------------|-------------|-----------|-----------|-----------|------------|-------------|------------|-----------|----------|-----------|------------|------------|
| SEASON | TEAM | GP-GS | MIN/AVG | FG-FGA | FG% | 3FG-3FGA | 3FG% | FT-FTA | FT% | OFF | DEF | TOT | AVG | PF-FO | A | TO | BLK | STL | PTS | AVG |
| 2022-23 | UCF | 29-14 | 785/27.1 | 42-138 | .304 | 3-19 | .158 | 45-64 | .703 | 15 | 23 | 38 | 1.3 | 42-1 | 98 | 80 | 1 | 45 | 132 | 4.6 |
| 2023-24 | UCF | 13-0 | 90/7.0 | 1-12 | .083 | 0-1 | .000 | 2-2 | 1.000 | 1 | 2 | 3 | 0.2 | 5-0 | 11 | 9 | 0 | 3 | 4 | 0.3 |
| TOTAL | | 42-14 | 875/20.8 | 43-150 | .287 | 3-20 | .150 | 47-66 | .712 | 16 | 25 | 41 | 1.0 | 47-1 | 109 | 89 | 1 | 48 | 136 | 3.2 |



#23 ANZHANE HUTTON

SENIOR | FORWARD

6-0 | Dallas, Texas | Howard

JUNIOR (2022-23)

- Appeared in 20 games, making seven starts
- Recorded a career-high 22 points against Texas Southern (12/29) and Tulsa (1/7)
- Posted her first double-double outing as a Knight with 22 points and 13 rebounds against Tulsa (1/7)
- Dished out a season-best three assists against Tulsa (1/7)
- Played a career-high 38 minutes against Wichita State (1/15) just shy of a double-double with nine points and eight rebounds
- Tallied her second double-double performance with 16 points and 10 rebounds at South Florida (1/22)
- Pulled down a game-high 11 rebounds and 17 points to mark her third double-double of the season against Temple (2/21)
- Had no turnovers and seven rebounds against the Golden Hurricane in the first round win of the AAC Tournament

SOPHOMORE AT HOWARD (2021-22)

- Played in 26 games and made 19 starts at Howard
- Helped team to Mid-Eastern Athletic Conference championship
- First-team All-MEAC and selected to the MEAC All-Tournament team
- Earned MEAC Player of the Week honors on Nov. 23, Feb. 15 and Feb. 22 as well as MEAC Defensive Player of the Week recognition on Jan. 18 and Feb. 1
- MEAC All-Defensive Team
- Averaged 10.2 points, 7.2 rebounds, 1.0 blocks, and 0.9 steals per game
- BOXTOROW second-team All HBCU (Historically Black College and Universities)

FRESHMAN AT HOWARD (2020-21)

- MEAC Rookie of the Year Award
- Selected to All-MEAC second team
- Selected to MEAC All-Rookie team
- Selected to MEAC All-Defensive Team
- Ranked among conference leaders in rebounding, blocks and scoring
- Named to 2021 Black College Sports Network (BCSN) All-American first team
- Named to the 2021 U.S. Air Force Reserve MEAC Tournament All-Tournament Team

HIGH SCHOOL

- 2020 Cedar Hills High School graduate
- Honorable mention all-academic as a freshman
- First team all academic as a sophomore
- TAPPS (Texas Association of Private and Parochial Schools) state champion in basketball as a junior
- UIL (University Interscholastic League) first-team all state as a senior
- National Honor Society

PERSONAL

- Majoring in psychology with a criminal profiling certificate
- Daughter of Richard and Charon Brown
- Born September 26

SINGLE GAME HIGHS

| Season | Career |
|--------|--------------------------------------|
| Pts. | 22 - vs Tulsa (1/7/23) |
| Reb. | 15 - vs Delaware St. (1/30/21) |
| FGM | 8 - at N.C. Central (1/29/22) |
| FGA | 15 - at George Washington (12/12/21) |
| 3FGM | 1 - vs Frostburg St. (1/15/22) |
| 3FGA | 2 - vs Coppin St. (1/16/21) |
| FTM | 9 - vs Coppin St. (2/21/22) |
| FTA | 14 - vs Temple (2/21/23) |
| Ast. | 3 - vs Coppin St. (2/21/22) |
| Blk. | 4 - vs North Carolina A&T (3/13/21) |
| Stls. | 4 - vs Norfolk St. (3/12/21) |
| Min. | 38 - vs Wichita State (1/15/22) |

Career Stats

| SEASON | TEAM | GP-GS | MIN/AVG | Field Goals | | 3-Point | | F-Throws | | Rebounds | | | | Scoring | | | | | | |
|----------------------|------|--------------|------------------|----------------|-------------|-------------|-------------|----------------|-------------|------------|------------|------------|------------|--------------|-----------|------------|-----------|-----------|------------|------------|
| | | | | FG-FGA | FG% | 3FG-3FGA | 3FG% | FT-FTA | FT% | OFF | DEF | TOT | AVG | PF-FO | A | TO | BLK | STL | PTS | AVG |
| 2020-21 | HOW | 19-19 | 565/29.7 | 83-163 | .509 | 1-5 | .200 | 50-91 | .549 | 63 | 123 | 186 | 9.8 | 49-0 | 21 | 50 | 29 | 21 | 217 | 11.4 |
| 2021-22 | HOW | 26-19 | 675/26.0 | 91-199 | .457 | 2-10 | .200 | 82-129 | .636 | 62 | 126 | 188 | 7.2 | 60-0 | 34 | 59 | 26 | 23 | 266 | 10.2 |
| 2022-23 | UCF | 20-7 | 395/19.7 | 54-131 | .412 | 1-2 | .500 | 43-70 | .614 | 34 | 91 | 125 | 6.3 | 42-1 | 11 | 41 | 6 | 8 | 152 | 7.6 |
| TOTAL FOR UCF | | 20-7 | 395/19.7 | 54-131 | .412 | 1-2 | .500 | 43-70 | .614 | 34 | 91 | 125 | 6.3 | 42-1 | 11 | 41 | 6 | 8 | 152 | 7.6 |
| TOTAL | | 65-45 | 1635/25.2 | 228-493 | .462 | 4-17 | .235 | 175-290 | .603 | 159 | 340 | 499 | 7.7 | 151-1 | 66 | 150 | 61 | 52 | 635 | 9.8 |



#24 JAYLA KELLY

SENIOR | CENTER

6-3 | Chesterfield, Mo. | Missouri

JUNIOR AT MISSOURI (2022-23)

- Appeared in 26 games for Mizzou
- Averaged 3.2 points and 2.7 rebounds per game
- Grabbed four rebounds in a 23-minute performance versus LSU (1/12)
- Scored 14 and grabbed nine rebounds, a team high against Tennessee (1/22)
- 2022-23 Winter SEC Academic Honor Roll

SOPHOMORE AT MISSOURI (2021-22)

- Made one start and appeared in 22 games
- Averaged 2.2 points and 1.2 rebounds
- Ranked fourth on the team with eight blocks
- Recorded a season-high 11 points and added four rebounds in her first career start against Kentucky (2/24)
- Concluded the year with four points in the WNIT first round matchup against Drake (3/17).

FRESHMAN AT MISSOURI (2020-21)

- Appeared in 10 games in her freshman campaign
- Averaging 1.5 points and 0.7 rebounds in 3.0 minutes per game

SINGLE GAME HIGHS

| | <i>Season</i> | <i>Career</i> |
|-------|-------------------------------------|-------------------------------------|
| Pts. | 14 - vs Bethune-Cookman (11/6/23) | 14 - vs Tennessee (1/22/23) |
| Reb. | 9 - vs Florida Atlantic (12/18/23) | 10 - vs Wake Forest (11/21/22) |
| Ast. | 3 - vs Jackson State (11/23/23) | 4 - vs Tennessee (1/22/23) |
| Stls. | 3 - vs Florida Atlantic (12/18/23) | 3 - vs Bradley (11/10/22) |
| Blk. | 2 - vs Campbell (12/3/23) | 3 - vs Mississippi State (2/20/22) |
| FGM | 6 - vs Bethune-Cookman (11/6/23) | 7 - vs Tennessee (1/22/23) |
| FGA | 10 - vs Bethune-Cookman (11/6/23) | 9 - vs Tennessee (1/22/23) |
| 3FGM | | |
| 3FGA | 1 - vs Bethune-Cookman (11/6/23) | 1 - at Alabama (1/30/22) |
| FTM | 5 - vs Morgan State (12/19/23) | 5 - vs St. Louis (11/20/22) |
| FTA | 6 - at Oklahoma (12/30/23) | 7 - vs St. Louis (11/30/22) |
| Min. | 29 - vs Florida Atlantic (12/18/23) | 29 - vs Florida Atlantic (12/18/23) |

Career Stats

| SEASON | TEAM | GP-GS | MIN/AVG | Field Goals | | 3-Point | | F-Throws | | Rebounds | | | | Scoring | | | | | | |
|----------------------|------|--------------|-----------------|---------------|-------------|------------|-------------|--------------|-------------|-----------|------------|------------|------------|--------------|-----------|-----------|-----------|-----------|------------|------------|
| | | | | FG-FGA | FG% | 3FG-3FGA | 3FG% | FT-FTA | FT% | OFF | DEF | TOT | AVG | PF-FO | A | TO | BLK | STL | PTS | AVG |
| 2020-21 | MIZ | 10-0 | 30/3.0 | 5-9 | .556 | 0-0 | .000 | 5-7 | .714 | 2 | 5 | 7 | 0.7 | 4-0 | 1 | 4 | 1 | 1 | 15 | 1.5 |
| 2021-22 | MIZ | 22-1 | 114/5.2 | 20-48 | .417 | 0-1 | .000 | 6-12 | .500 | 10 | 15 | 25 | 1.1 | 23-0 | 4 | 15 | 8 | 7 | 46 | 2.1 |
| 2022-23 | MIZ | 26-21 | 302/11.6 | 32-76 | .421 | 0-0 | .000 | 18-40 | .450 | 21 | 50 | 71 | 2.7 | 47-1 | 18 | 36 | 9 | 8 | 82 | 3.2 |
| 2023-24 | UCF | 14-13 | 267/19.1 | 24-52 | .462 | 0-1 | .000 | 21-31 | .677 | 20 | 48 | 68 | 4.9 | 44-3 | 7 | 34 | 7 | 8 | 69 | 4.9 |
| TOTAL FOR UCF | | 14-13 | 267/19.1 | 24-52 | .462 | 0-1 | .000 | 21-31 | .677 | 20 | 48 | 68 | 4.9 | 44-3 | 7 | 34 | 7 | 8 | 69 | 4.9 |
| TOTAL | | 72-35 | 714/9.9 | 81-185 | .438 | 0-2 | .000 | 50-90 | .556 | 53 | 118 | 171 | 2.4 | 118-4 | 30 | 89 | 25 | 24 | 212 | 2.9 |

#25 FEMI FUNEUS

GRADUATE | FORWARD

6-2 | Plantation, Fla. | Seton Hall / Southern Mississippi



GRADUATE AT SOUTHERN MISS (2022-23)

- Returned to basketball after 714 days off the court, playing in-game for the first time since Dec. 11, 2020
- Played in 27 games total, making 21 starts as the Lady Eagles' primary forward
- Averaged 6.7 points per game and 5.9 rebounds per game
- Set season-high points and rebounds against Troy (12/29) to collect her first career double-double with 16 points and 11 rebounds to earn Southern Miss' first Sun Belt Conference win
- Finished four games with double-figure scoring and three games with double-digit boards
- Second-best field goal percentage on the team with a 49.2 percent mark

JUNIOR AT SETON HALL (2020-21)

- Played in one game before suffering a season-ending injury one minute into the second game of the season
- Had four points, four rebounds and four blocks vs. Saint Peter's in the season-opener on Dec. 8
- Named to the All-Academic Big East Team

SOPHOMORE AT SETON HALL (2019-20)

- Played in 18 games, all off the bench
- Averaged 2.7 points and 1.6 rebounds in 7.4 minutes per game
- Scored six points with two rebounds against Butler in the quarterfinals of the Big East Championship
- Had seven points and three rebounds at Creighton on Feb. 16
- Collected four points, four rebounds and a steal vs. Marquette on Feb. 7
- Had five points and four rebounds vs. Providence on Jan. 19
- Had five points and three rebounds vs. Georgetown on Jan. 5
- Tallied a season-high 10 points with two rebounds in only 10 minutes vs. Lafayette on Dec. 20
- Named to Big East All-Academic Team

FRESHMAN AT SETON HALL (2018-19)

- Played in the first 11 games of her freshman campaign before an injury cost her the rest of the season
- Named Big East Freshman of the Week on Nov. 12
- Averaged 7.1 points and 4.4 rebounds in 17.0 minutes per game
- Had a career-high 21 points with eight rebounds against Kennesaw State (Nov. 10)
- Grabbed a career-high 12 rebounds vs. Saint Peter's (Dec. 2)

SINGLE GAME HIGHS

| <i>Season</i> | | <i>Career</i> |
|---------------|-----------------------------|-----------------------------------|
| Pts. | | 21 - at Kennesaw State (11/10/18) |
| Reb. | 1 - at Cincinnati (1/10/24) | 12 - vs St. Peter's (12/2/18) |
| Ast. | | 3 - vs Troy (2/22/23) |
| Stls. | | 4 - vs Louisiana (1/5/23) |
| Blk. | | 4 - vs St. Peter's (12/8/20) |
| FGM | | 7 - vs Kennesaw State (11/10/18) |
| FGA | | 13 - vs St. Peter's (12/2/18) |
| 3FGM | | |
| 3FGA | | 2 - vs South Alabama (2/4/23) |
| FTM | | 7 - vs Kennesaw State (11/10/18) |
| FTA | | 11 - vs Kennesaw State (11/10/18) |
| Min. | 1 - at Cincinnati (1/10/24) | 33 - at Georgia State (2/16/23) |

Career Stats

| SEASON | TEAM | GP-GS | MIN/AVG | Field Goals | | 3-Point | | F-Throws | | Rebounds | | | | Scoring | | | | | | | |
|----------------------|------|--------------|-----------------|----------------|-------------|------------|-------------|---------------|-------------|------------|------------|------------|------------|--------------|-----------|-----------|-----------|-----------|------------|------------|------------|
| | | | | FG-FGA | FG% | 3FG-3FGA | 3FG% | FT-FTA | FT% | OFF | DEF | TOT | AVG | PF-FO | A | TO | BLK | STL | PTS | AVG | |
| 2018-19 | SHU | 11-0 | 185/16.8 | 32-73 | .438 | 0-0 | .000 | 14-32 | .438 | 26 | 22 | 48 | 4.4 | 26-0 | 3 | 18 | 6 | 4 | 78 | 7.1 | |
| 2019-20 | SHU | 18-0 | 131/7.3 | 17-45 | .378 | 0-0 | .000 | 14-15 | .933 | 14 | 15 | 29 | 1.6 | 19-0 | 4 | 10 | 1 | 3 | 48 | 2.7 | |
| 2020-21 | SHU | 2-2 | 19/9.4 | 2-6 | .333 | 0-0 | .000 | 0-0 | .000 | 0 | 4 | 4 | 2.0 | 3-0 | 0 | 3 | 4 | 0 | 4 | 2.0 | |
| 2022-23 | USM | 27-21 | 639/23.7 | 67-137 | .489 | 0-2 | .000 | 46-69 | .667 | 75 | 84 | 159 | 5.9 | 70-2 | 16 | 49 | 5 | 18 | 180 | 6.7 | |
| 2023-24 | UCF | 1-0 | 2/2.0 | 0-0 | .000 | 0-0 | .000 | 0-0 | .000 | 0 | 1 | 1 | 1.0 | 1-0 | 0 | 1 | 0 | 0 | 0 | 0.0 | |
| TOTAL FOR UCF | | 1-0 | 2/2.0 | 0-0 | .000 | 0-0 | .000 | 0-0 | .000 | 0 | 1 | 1 | 1.0 | 1-0 | 0 | 1 | 0 | 0 | 0 | 0 | 0.0 |
| TOTAL | | 59-23 | 976/16.5 | 118-261 | .452 | 0-2 | .000 | 74-116 | .638 | 115 | 126 | 241 | 4.1 | 119-2 | 23 | 81 | 16 | 25 | 310 | 5.3 | |



#30 MORGAN ROBINSON-NWAGWU

GRADUATE | GUARD

5-8 | Norcross, Ga. | Auburn / Gulf Coast State College

SENIOR (2022-23)

- Did not play at UCF due to injury

GULF COAST STATE COLLEGE (2021-22)

- Averaged 20.2 points, 7.7 rebounds in 25.6 minutes as a junior
- One of three Colonials to appear in all 29 games, starting 29, tied for the second most on the team in 2021-22
- Led the team in scoring at 20.2 ppg and in rebounding at 7.1 rpg

AUBURN (2019-21)

- Played in all 29 games as a freshman, then 14 games as a sophomore including three starts
- Appeared in and started three games before suffering a season-ending injury in 2020-21
- Added 12 steals and 20 assists as a sophomore

HIGH SCHOOL

- Was ranked as the No. 28 guard nationally by ESPN HoopGurlz
- Named first-team all-state and first-team all-metro by the Atlanta Journal-Constitution
- Named Region 7A player of the year and all-Gwinnett County first team by Gwinnett Daily Post
- Helped Norcross High School team to 7A state runner-up finish as a sophomore and elite eight showings as a junior and a senior
- Averaged 15.3 points, 7.1 rebounds, 4.6 assists, 4.1 steals and 1.1 blocks per game as a junior
- Club team was WP Celtics
- Played soccer

PERSONAL

- Pursuing a master's degree in kinesiology
- Born September 8

SINGLE GAME HIGHS

| Season | | Career |
|--------|------------------------------------|-------------------------------|
| Pts. | 13 - vs Anderson (11/13/23) | 13 - vs Anderson (11/13/23) |
| Reb. | 7 - at Cincinnati (1/10/24) | 7 - at Cincinnati (1/10/24) |
| Ast. | 5 - vs Oklahoma State (1/3/24) | 6 - at Ole Miss (1/7/21) |
| Stls. | 1 - vs Florida Atlantic (12/18/23) | 4 - vs USC Upstate (11/25/20) |
| Blk. | 1 - vs Oklahoma State (1/3/24) | 1 - at LSU (12/31/20) |
| FGM | 5 - vs Oklahoma St. (1/3/24) | 5 - vs Oklahoma St. (1/3/24) |
| FGA | 8 - vs Oklahoma State (1/3/24) | 12 - vs Florida (1/9/20) |
| 3FGM | 1 - vs Oklahoma State (1/3/24) | 1 - at LSU (12/31/20) |
| 3FGA | 3 - vs Oklahoma State (1/3/24) | 5 - vs Florida (1/9/20) |
| FTM | 4 - vs Anderson (11/13/23) | 12 - vs Florida (1/9/20) |
| FTA | 4 - vs Anderson (11/13/23) | 4 - at Florida (1/17/21) |
| Min. | 26 - vs Oklahoma State (1/3/24) | 30 - at Florida (1/17/21) |

Career Stats

| | | Field Goals | | 3-Point | | F-Throws | | Rebounds | | | | Scoring | | | | | | | | |
|----------------------|------|-------------|-----------------|---------------|-------------|-------------|-------------|--------------|-------------|-----------|-----------|-----------|------------|-------------|-----------|-----------|----------|-----------|------------|------------|
| SEASON | TEAM | GP-GS | MIN/AVG | FG-FGA | FG% | 3FG-3FGA | 3FG% | FT-FTA | FT% | OFF | DEF | TOT | AVG | PF-FO | A | TO | BLK | STL | PTS | AVG |
| 2019-20 | AUB | 29-0 | 317/10.9 | 13-64 | .203 | 2-10 | .200 | 11-21 | .524 | 13 | 25 | 38 | 1.3 | 32-1 | 44 | 46 | 2 | 19 | 39 | 1.3 |
| 2020-21 | AUB | 14-3 | 150/10.7 | 8-30 | .267 | 1-10 | .100 | 8-9 | .889 | 2 | 13 | 15 | 1.1 | 7-0 | 20 | 27 | 1 | 12 | 25 | 1.8 |
| 2023-24 | UCF | 11-0 | 96/8.7 | 14-25 | .560 | 2-7 | .286 | 7-9 | .778 | 6 | 11 | 17 | 1.5 | 10-0 | 11 | 7 | 1 | 5 | 37 | 3.4 |
| TOTAL FOR UCF | | 11-0 | 96/8.7 | 14-25 | .560 | 2-7 | .286 | 7-9 | .778 | 6 | 11 | 17 | 1.5 | 10-0 | 11 | 7 | 1 | 5 | 37 | 3.4 |
| TOTAL | | 54-3 | 563/10.4 | 35-119 | .294 | 5-27 | .185 | 26-39 | .667 | 21 | 49 | 70 | 1.3 | 49-1 | 75 | 80 | 4 | 36 | 101 | 1.9 |



#35 KHYALA NGODU

FRESHMAN | CENTER

6-3 | Fort Lauderdale, Fla. | Dillard HS

HIGH SCHOOL

- Averaged a double-double as a senior with 14.4 points and 12.1 rebounds at Dillard High School along with an identical stat line of 1.8 steals and blocks per game
- Accumulated 575 rebounds and 675 points
- 2021 Boo Williams Holiday tournament MVP
- Ranked No. 7 player in the state of Florida
- Led Nike Elite Youth Basketball League in blocks and rebound

PERSONAL

- Born June 28
- Daughter of Kyle Simmons and Malikh Ngodu
- Has five siblings, Niani, Jacsiir, Lahila, Malik and Ilijah

SINGLE GAME HIGHS

| | <i>Season</i> | <i>Career</i> |
|-------|--------------------------------|--------------------------------|
| Pts. | 12 - vs Jackson St. (11/23/23) | 12 - vs Jackson St. (11/23/23) |
| Reb. | 10 - vs New Orleans (12/11/23) | 10 - vs New Orleans (12/11/23) |
| Ast. | 3 - vs Jackson St. (11/23/23) | 3 - vs Jackson St. (11/23/23) |
| Stls. | 3 - at Cincinnati (1/10/23) | 3 - at Cincinnati (1/10/23) |
| Blk. | 1 - vs New Orleans (12/11/23) | 1 - vs New Orleans (12/11/23) |
| FGM | 5 - vs Jackson St. (11/23/23) | 5 - vs Jackson St. (11/23/23) |
| FGA | 8 - vs Jackson St. (11/23/23) | 8 - vs Jackson St. (11/23/23) |
| 3FGM | | |
| 3FGA | | |
| FTM | 4 - vs Oklahoma St. (1/3/24) | 4 - vs Oklahoma St. (1/3/24) |
| FTA | 4 - vs Oklahoma St. (1/3/24) | 4 - vs Oklahoma St. (1/3/24) |
| Min. | 24 - vs Jackson St. (11/23/23) | 24 - vs Jackson St. (11/23/23) |

Career Stats

| | | Field Goals | | 3-Point | | F-Throws | | Rebounds | | | | Scoring | | | | | | | | |
|--------------|------|-------------|-----------------|--------------|-------------|------------|-------------|--------------|-------------|-----------|-----------|-----------|------------|-------------|----------|-----------|----------|----------|-----------|------------|
| SEASON | TEAM | GP-GS | MIN/AVG | FG-FGA | FG% | 3FG-3FGA | 3FG% | FT-FTA | FT% | OFF | DEF | TOT | AVG | PF-FO | A | TO | BLK | STL | PTS | AVG |
| 2023-24 | UCF | 13-0 | 172/13.2 | 18-36 | .500 | 0-0 | .000 | 10-11 | .909 | 18 | 40 | 58 | 4.5 | 22-2 | 9 | 15 | 2 | 9 | 46 | 3.5 |
| TOTAL | | 13-0 | 172/13.2 | 18-36 | .500 | 0-0 | .000 | 10-11 | .909 | 18 | 40 | 58 | 4.5 | 22-2 | 9 | 15 | 2 | 9 | 46 | 3.5 |



#42 MARY MCMILLAN

SENIOR | GUARD

5-6 | Apopka, Fla. | UNCW

JUNIOR AT UNC-WILMINGTON (2022-23)

- Team captain who made five starts before missing the remainder of her junior year with injury
- Averaged 12.2 points and 3.0 assists per game
- Scored a career-high 25 points vs. Wofford
- Shot 10-of-19 from the field vs. the Terriers
- Delivered 20 points, including 11 made free throws, in first win of the season vs. Mount Olive
- Played in 150 minutes and shot 40.4 percent from the field

SOPHOMORE AT UNC-WILMINGTON (2021-22)

- Appeared in 24 games with 14 starts as a sophomore
- averaged 4.5 points with 1.7 assists
- shot 29.4 percent from the field and 39.2 percent from three-point range

FRESHMAN AT UNC-WILMINGTON (2020-21)

- Started in 18 games as a freshman
- Averaged 7.8 points and 2.6 rebounds per game
- Led Seahawks with 55 assists
- Third on the team with 23 steals
- Registered eight double-digit scoring efforts
- Opened college career with season-high 16 points and five rebounds against Norfolk State
- Recipient of team's "Whatever It Takes" award
- Member of CAA Commissioner's Academic Honor Roll for the fall and spring semesters

HIGH SCHOOL

- Four-year letter winner for the Blue Darters
- Two-time all-conference selection
- Guided Apopka to 24-4 record and district championship in 2019-20
- Averaged 13.5 points, 3.0 rebounds and 3.0 assists per game during senior season

PERSONAL

- Born January 31
- Daughter of Tara and Jeff McMillan
- One of seven children in family
- Majoring in Business Administration

SINGLE GAME HIGHS

| Season | | Career |
|--------|-------------------------------|----------------------------------|
| Pts. | | 25 - vs Wofford (11/22/22) |
| Reb. | 1 - vs Oklahoma St. (1/3/24) | 5 - vs Norfolk (11/25/20) |
| Ast. | 4 - vs Morgan St. (12/19/23) | 6 - vs UNC Greensboro (12/11/20) |
| Stls. | | 4 - at Kennesaw St. (12/18/20) |
| Blk. | 1 - vs Morgan St. (12/19/23) | 1 - vs Lenior-Rhyne (11/7/22) |
| FGM | | 10 - vs Wofford (11/22/22) |
| FGA | 1 - vs Oklahoma St. (1/3/24) | 19 - vs Wofford (11/22/22) |
| 3FGM | | 5 - vs Wofford (11/22/22) |
| 3FGA | 1 - vs Oklahoma St. (1/3/24) | 7 - vs Wofford (11/22/22) |
| FTM | | 11 - vs Mount Olive (11/16/22) |
| FTA | | 15 - vs Mount Olive (11/16/22) |
| Min. | 17 - vs Morgan St. (12/19/23) | 40 - at Hofstra (1/31/21) |

Career Stats

| | | Field Goals | | 3-Point | | F-Throws | | Rebounds | | | | Scoring | | | | | | | | |
|----------------------|------|--------------|------------------|----------------|-------------|---------------|-------------|--------------|-------------|-----------|-----------|-----------|------------|-------------|------------|------------|----------|-----------|------------|------------|
| SEASON | TEAM | GP-GS | MIN/AVG | FG-FGA | FG% | 3FG-3FGA | 3FG% | FT-FTA | FT% | OFF | DEF | TOT | AVG | PF-FO | A | TO | BLK | STL | PTS | AVG |
| 2020-21 | UNCW | 18-18 | 604/33.5 | 50-177 | .282 | 18-66 | .273 | 22-38 | .579 | 7 | 40 | 47 | 2.6 | 40-1 | 55 | 67 | 0 | 23 | 140 | 7.8 |
| 2021-22 | UNCW | 24-14 | 493/20.5 | 37-126 | .294 | 20-51 | .392 | 15-25 | .600 | 4 | 24 | 28 | 1.2 | 34-0 | 40 | 44 | 1 | 11 | 109 | 4.5 |
| 2022-23 | UNCW | 5-5 | 151/30.2 | 21-52 | .404 | 6-16 | .375 | 13-19 | .684 | 1 | 5 | 6 | 1.2 | 11-0 | 15 | 16 | 1 | 5 | 61 | 12.2 |
| 2023-24 | UCF | 5-0 | 49/9.8 | 0-7 | .000 | 0-4 | .000 | 0-0 | .000 | 0 | 3 | 3 | 0.6 | 2-0 | 9 | 4 | 1 | 1 | 0 | 0.0 |
| TOTAL FOR UCF | | 5-0 | 49/9.8 | 0-7 | .000 | 0-4 | .000 | 0-0 | .000 | 0 | 3 | 3 | 0.6 | 2-0 | 9 | 4 | 1 | 1 | 0 | 0.0 |
| TOTAL | | 52-37 | 1296/24.9 | 108-362 | .298 | 44-137 | .321 | 50-82 | .610 | 12 | 72 | 84 | 1.6 | 87-1 | 119 | 131 | 3 | 40 | 310 | 6.0 |

GAME-BY-GAME LEADERS

| Opponent | Points | Rebounds | Assists |
|-------------------|-------------------------|----------------------|---------------------|
| Bethune-Cookman | 31 - Peterson | 14 - Akot | 7 - Akot |
| Anderson | 18 - Peterson | 11 - Akot | 5 - Jewett |
| Auburn | 19 - Jewett | 7 - Kelly & Peterson | 3 - Akot & Jewett |
| vs Jackson State | 21 - Peterson | 7 - Akot & Ngodu | 3 - Kelly & Ngodu |
| vs St. John's | 12 - Burns and Peterson | 13 - Akot | 6 - Jewett |
| vs Sacred Heart | 32- Peterson | 12 - Akot | 7 - Jewett |
| Campbell | 14 - Akot | 9 - Akot & Ngodu | 3 - Jewett |
| New Orleans | 21 - Jewett | 11 - Akot | 3 - Jewett |
| Florida Atlantic | 18 - Peterson | 9 - Akot & Kelly | 2 - Burns |
| Morgan State | 20 - Peterson | 11 - Akot | 6 - Jewett |
| at Oklahoma | 14 - Peterson | 7 - Akot & Kelly | 3 - Jewett & Burns |
| Oklahoma State | 22- Peterson | 6 - Peterson & Akot | 5 - Robinson-Nwagwu |
| Kansas State | 22 - Peterson | 8 - Akot | 4 - McMillan |
| at Cincinnati | 35 - Peterson | 8 - Ngodu | 2 - Peterson |
| West Virginia | | | |
| at Baylor | | | |
| at TCU | | | |
| Houston | | | |
| at West Virginia | | | |
| Iowa State | | | |
| Cincinnati | | | |
| at Texas Tech | | | |
| BYU | | | |
| at Kansas State | | | |
| at Oklahoma State | | | |
| Texas | | | |
| Kansas | | | |
| at Houston | | | |

STARTING LINEUPS

| Opponent | Guard | Guard | Guard | Guard/Center | Forward |
|-------------------|--------|----------|-------|--------------|---------|
| Bethune-Cookman | Jewett | Peterson | Burns | Ware | Akot |
| Anderson | Jewett | Peterson | Burns | Kelly | Akot |
| Auburn | Jewett | Peterson | Burns | Kelly | Akot |
| vs Jackson State | Jewett | Peterson | Burns | Kelly | Akot |
| vs St. John's | Jewett | Peterson | Burns | Kelly | Akot |
| vs Sacred Heart | Jewett | Peterson | Burns | Kelly | Akot |
| Campbell | Jewett | Peterson | Burns | Kelly | Akot |
| New Orleans | Jewett | Peterson | Burns | Kelly | Akot |
| Florida Atlantic | Jewett | Peterson | Burns | Kelly | Akot |
| Morgan State | Jewett | Peterson | Burns | Kelly | Akot |
| at Oklahoma | Jewett | Peterson | Burns | Kelly | Akot |
| Oklahoma State | Jewett | Peterson | Burns | Kelly | Akot |
| Kansas State | Jewett | Peterson | Burns | Kelly | Akot |
| at Cincinnati | Jewett | Peterson | Burns | Kelly | Akot |
| West Virginia | | | | | |
| at Baylor | | | | | |
| at TCU | | | | | |
| Houston | | | | | |
| at West Virginia | | | | | |
| Iowa State | | | | | |
| Cincinnati | | | | | |
| at Texas Tech | | | | | |
| BYU | | | | | |
| at Kansas State | | | | | |
| at Oklahoma State | | | | | |
| Texas | | | | | |
| Kansas | | | | | |
| at Houston | | | | | |

RECORD BY LINEUP

| Guard | Guard | Guard | Guard/Center | Forward | Record |
|--------|----------|-------|--------------|---------|--------|
| Jewett | Peterson | Burns | Ware | Akot | 1-0 |
| Jewett | Peterson | Burns | Kelly | Akot | 8-5 |

UCF IN THE LAST FIVE GAMES

| Record | Overall | Home | Away | Neutral |
|----------------|---------|------|------|---------|
| ALL GAMES | 1-4 | 1-2 | 0-2 | 0-0 |
| CONFERENCE | 0-4 | 0-2 | 0-2 | 0-0 |
| NON-CONFERENCE | 1-0 | 1-0 | 0-0 | 0-0 |

Team Box Score

| No. | Player | | | | Total | | 3-Point | | F-Throw | | Rebounds | | | | | | | | | | | |
|------------------|-------------------------|----------|-------------|------|----------------|-------------|--------------|-------------|--------------|-------------|-----------|------------|------------|-------------|-----------|----------|-----------|-----------|-----------|-----------|------------|-------------|
| | | GP-GS | MIN | AVG | FG-FGA | FG% | 3FG-3FGA | 3FG% | FT-FTA | FT% | OFF | DEF | TOT | AVG | PF | DQ | A | TO | BLK | STL | PTS | AVG |
| 3 | PETERSON, Kaitlin | 5-5 | 187:22 | 37.5 | 38-95 | .400 | 14-37 | .378 | 23-34 | .676 | 6 | 16 | 22 | 4.4 | 7 | 0 | 9 | 16 | 0 | 8 | 113 | 22.6 |
| 0 | JEWETT, Laila | 5-5 | 154:28 | 30.9 | 12-35 | .343 | 5-14 | .357 | 8-10 | .800 | 1 | 12 | 13 | 2.6 | 11 | 0 | 15 | 9 | 0 | 3 | 37 | 7.4 |
| 10 | BURNS, Mya | 5-5 | 132:49 | 26.6 | 13-30 | .433 | 4-8 | .500 | 4-5 | .800 | 4 | 13 | 17 | 3.4 | 14 | 0 | 6 | 13 | 2 | 5 | 34 | 6.8 |
| 11 | AKOT, Achol | 5-5 | 125:58 | 25.2 | 14-26 | .538 | 0-0 | .000 | 6-10 | .600 | 13 | 24 | 37 | 7.4 | 14 | 1 | 4 | 19 | 3 | 1 | 34 | 6.8 |
| 30 | ROBINSON-NWAGWU, Morgan | 4-0 | 74:50 | 18.7 | 9-19 | .474 | 1-5 | .200 | 1-4 | .250 | 7 | 9 | 16 | 4.0 | 6 | 0 | 9 | 3 | 1 | 3 | 20 | 5.0 |
| 35 | NGODU, Khyala | 5-0 | 75:33 | 15.1 | 9-14 | .643 | 0-0 | .000 | 6-6 | 1.000 | 6 | 17 | 23 | 4.6 | 8 | 1 | 2 | 2 | 0 | 5 | 24 | 4.8 |
| 15 | GIBSON, Taylor | 4-0 | 64:25 | 16.1 | 6-13 | .462 | 0-3 | .000 | 3-3 | 1.000 | 1 | 8 | 9 | 2.3 | 5 | 0 | 0 | 6 | 5 | 0 | 15 | 3.8 |
| 24 | KELLY, Jayla | 5-5 | 83:33 | 16.7 | 4-13 | .308 | 0-0 | .000 | 10-15 | .667 | 3 | 11 | 14 | 2.8 | 14 | 1 | 2 | 10 | 1 | 2 | 18 | 3.6 |
| 14 | TODD, Asia | 4-0 | 15:52 | 4.0 | 1-4 | .250 | 0-1 | .000 | 0-0 | .000 | 0 | 1 | 1 | 0.3 | 1 | 0 | 0 | 2 | 0 | 0 | 2 | 0.5 |
| 22 | GODBOLT, Sierra | 5-0 | 15:54 | 3.2 | 0-3 | .000 | 0-0 | .000 | 2-2 | 1.000 | 0 | 0 | 0 | 0.0 | 0 | 0 | 1 | 4 | 0 | 0 | 2 | 0.4 |
| 25 | FUNEUS, Femi | 1-0 | 01:59 | 2.0 | 0-0 | .000 | 0-0 | .000 | 0-0 | .000 | 0 | 1 | 1 | 1.0 | 1 | 0 | 0 | 1 | 0 | 0 | 0 | 0.0 |
| 42 | MCMILLAN, Mary | 5-0 | 48:53 | 9.8 | 0-7 | .000 | 0-4 | .000 | 0-0 | .000 | 0 | 3 | 3 | 0.6 | 2 | 0 | 9 | 4 | 1 | 1 | 0 | 0.0 |
| 21 | WARE, Timia | 2-0 | 18:24 | 9.2 | 0-4 | .000 | 0-0 | .000 | 0-0 | .000 | 0 | 1 | 1 | 0.5 | 1 | 0 | 0 | 1 | 0 | 0 | 0 | 0.0 |
| Team | | | | | | | | | | | 5 | 8 | 13 | | | | 4 | | | | | |
| Total | | 5 | 1000 | | 106-263 | .403 | 24-72 | .333 | 63-89 | .708 | 46 | 124 | 170 | 34.0 | 84 | 3 | 57 | 94 | 13 | 28 | 299 | 59.8 |
| Opponents | | 5 | 1000 | | 120-294 | .408 | 27-92 | .293 | 47-71 | .662 | 51 | 106 | 157 | 31.4 | 82 | 1 | 62 | 71 | 23 | 47 | 314 | 62.8 |

Score by Periods

| Team | 1st | 2nd | 3rd | 4th | OT | TOT |
|-----------|-----|-----|-----|-----|----|-----|
| UCF | 71 | 53 | 79 | 96 | 0 | 299 |
| Opponents | 77 | 68 | 83 | 86 | 0 | 314 |

UCF AT HOME...

Game Records

| Record | Overall | Home | Away | Neutral |
|----------------|---------|------|------|---------|
| ALL GAMES | 6-3 | 6-3 | 0-0 | 0-0 |
| CONFERENCE | 0-2 | 0-2 | 0-0 | 0-0 |
| NON-CONFERENCE | 6-1 | 6-1 | 0-0 | 0-0 |

Team Box Score

| No. | Player | | | | Total | | 3-Point | | F-Throw | | Rebounds | | | | | | | | | | | |
|------------------|-------------------------|----------|-------------|------|----------------|-------------|---------------|-------------|----------------|-------------|------------|------------|------------|-------------|------------|----------|------------|------------|-----------|-----------|------------|-------------|
| | | GP-GS | MIN | AVG | FG-FGA | FG% | 3FG-3FGA | 3FG% | FT-FTA | FT% | OFF | DEF | TOT | AVG | PF | DQ | A | TO | BLK | STL | PTS | AVG |
| 3 | PETERSON, Kaitlin | 9-9 | 315:41 | 35.1 | 61-159 | .384 | 25-68 | .368 | 27-41 | .659 | 13 | 22 | 35 | 3.9 | 10 | 0 | 12 | 13 | 0 | 16 | 174 | 19.3 |
| 0 | JEWETT, Laila | 9-9 | 311:59 | 34.7 | 34-70 | .486 | 19-32 | .594 | 12-15 | .800 | 3 | 22 | 25 | 2.8 | 12 | 0 | 30 | 20 | 0 | 13 | 99 | 11.0 |
| 10 | BURNS, Mya | 9-9 | 250:19 | 27.8 | 26-74 | .351 | 7-26 | .269 | 21-26 | .808 | 16 | 24 | 40 | 4.4 | 22 | 1 | 10 | 21 | 5 | 8 | 80 | 8.9 |
| 11 | AKOT, Achol | 9-9 | 214:06 | 23.8 | 26-51 | .510 | 0-0 | .000 | 13-20 | .650 | 33 | 47 | 80 | 8.9 | 29 | 3 | 18 | 28 | 5 | 7 | 65 | 7.2 |
| 24 | KELLY, Jayla | 9-8 | 190:07 | 21.1 | 20-43 | .465 | 0-1 | .000 | 12-17 | .706 | 13 | 34 | 47 | 5.2 | 31 | 2 | 3 | 21 | 5 | 8 | 52 | 5.8 |
| 30 | ROBINSON-NWAGWU, Morgan | 8-0 | 85:34 | 10.7 | 14-25 | .560 | 2-7 | .286 | 7-9 | .778 | 6 | 10 | 16 | 2.0 | 6 | 0 | 11 | 5 | 1 | 5 | 37 | 4.6 |
| 35 | NGODU, Khyala | 8-0 | 101:23 | 12.7 | 13-25 | .520 | 0-0 | .000 | 8-9 | .889 | 13 | 22 | 35 | 4.4 | 9 | 0 | 5 | 10 | 2 | 4 | 34 | 4.3 |
| 15 | GIBSON, Taylor | 8-0 | 100:51 | 12.6 | 10-28 | .357 | 0-5 | .000 | 10-10 | 1.000 | 6 | 13 | 19 | 2.4 | 6 | 0 | 0 | 7 | 5 | 2 | 30 | 3.8 |
| 21 | WARE, Timia | 7-1 | 103:51 | 14.8 | 7-30 | .233 | 3-12 | .250 | 5-5 | 1.000 | 3 | 15 | 18 | 2.6 | 7 | 0 | 11 | 16 | 0 | 4 | 22 | 3.1 |
| 14 | TODD, Asia | 6-0 | 37:18 | 6.2 | 8-17 | .471 | 2-6 | .333 | 0-0 | .000 | 1 | 5 | 6 | 1.0 | 6 | 0 | 2 | 7 | 0 | 2 | 18 | 3.0 |
| 22 | GODBOLT, Sierra | 8-0 | 52:38 | 6.6 | 0-8 | .000 | 0-1 | .000 | 2-2 | 1.000 | 1 | 1 | 2 | 0.3 | 2 | 0 | 6 | 4 | 0 | 3 | 2 | 0.3 |
| 42 | MCMILLAN, Mary | 3-0 | 36:14 | 12.1 | 0-4 | .000 | 0-2 | .000 | 0-0 | .000 | 0 | 3 | 3 | 1.0 | 2 | 0 | 8 | 3 | 1 | 1 | 0 | 0.0 |
| Team | | | | | | | | | | | 20 | 29 | 49 | | | | 7 | | | | | |
| Total | | 9 | 1800 | | 219-534 | .410 | 58-160 | .363 | 117-154 | .760 | 128 | 247 | 375 | 41.7 | 142 | 6 | 116 | 162 | 24 | 73 | 613 | 68.1 |
| Opponents | | 9 | 1800 | | 195-507 | .385 | 45-153 | .294 | 80-123 | .650 | 83 | 200 | 283 | 31.4 | 158 | 2 | 90 | 161 | 39 | 74 | 515 | 57.2 |

Score by Periods

| Team | 1st | 2nd | 3rd | 4th | OT | TOT |
|-----------|-----|-----|-----|-----|----|-----|
| UCF | 124 | 134 | 168 | 187 | 0 | 613 |
| Opponents | 125 | 140 | 119 | 131 | 0 | 515 |

UCF ON THE ROAD...
Team Box Score

| No. | Player | | | | Total | | 3-Point | | F-Throw | | Rebounds | | | | | | | | | | | |
|------------------|-------------------------|----------|------------|------|---------------|-------------|--------------|-------------|--------------|-------------|-----------|-----------|-----------|-------------|-----------|----------|-----------|-----------|-----------|-----------|------------|-------------|
| | | GP-GS | MIN | AVG | FG-FGA | FG% | 3FG-3FGA | 3FG% | FT-FTA | FT% | OFF | DEF | TOT | AVG | PF | DQ | A | TO | BLK | STL | PTS | AVG |
| 3 | PETERSON, Kaitlin | 2-2 | 77:36 | 38.8 | 14-40 | .350 | 5-15 | .333 | 16-21 | .762 | 2 | 8 | 10 | 5.0 | 3 | 0 | 3 | 8 | 0 | 4 | 49 | 24.5 |
| 11 | AKOT, Achol | 2-2 | 52:08 | 26.1 | 10-18 | .556 | 0-0 | .000 | 3-6 | .500 | 6 | 6 | 12 | 6.0 | 5 | 0 | 0 | 5 | 1 | 1 | 23 | 11.5 |
| 10 | BURNS, Mya | 2-2 | 55:32 | 27.8 | 7-20 | .350 | 1-4 | .250 | 0-0 | .000 | 1 | 5 | 6 | 3.0 | 6 | 0 | 4 | 5 | 1 | 3 | 15 | 7.5 |
| 0 | JEWETT, Laila | 2-2 | 50:10 | 25.1 | 6-13 | .462 | 2-6 | .333 | 0-0 | .000 | 1 | 4 | 5 | 2.5 | 7 | 0 | 4 | 4 | 0 | 0 | 14 | 7.0 |
| 15 | GIBSON, Taylor | 2-0 | 41:12 | 20.6 | 3-6 | .500 | 0-0 | .000 | 1-1 | 1.000 | 1 | 4 | 5 | 2.5 | 2 | 0 | 0 | 3 | 2 | 0 | 7 | 3.5 |
| 24 | KELLY, Jayla | 2-2 | 27:31 | 13.8 | 1-4 | .250 | 0-0 | .000 | 3-6 | .500 | 3 | 4 | 7 | 3.5 | 4 | 0 | 0 | 5 | 0 | 0 | 5 | 2.5 |
| 30 | ROBINSON-NWAGWU, Morgan | 1-0 | 19:23 | 19.4 | 1-5 | .200 | 0-1 | .000 | 0-2 | .000 | 4 | 3 | 7 | 7.0 | 2 | 0 | 1 | 1 | 0 | 0 | 2 | 2.0 |
| 25 | FUNEUS, Femi | 1-0 | 01:59 | 2.0 | 0-0 | .000 | 0-0 | .000 | 0-0 | .000 | 0 | 1 | 1 | 1.0 | 1 | 0 | 0 | 1 | 0 | 0 | 0 | 0.0 |
| 42 | MCMILLAN, Mary | 2-0 | 12:39 | 6.3 | 0-3 | .000 | 0-2 | .000 | 0-0 | .000 | 0 | 0 | 0 | 0.0 | 0 | 0 | 1 | 1 | 0 | 0 | 0 | 0.0 |
| 21 | WARE, Timia | 1-0 | 17:31 | 17.5 | 0-4 | .000 | 0-0 | .000 | 0-0 | .000 | 0 | 1 | 1 | 1.0 | 1 | 0 | 0 | 0 | 0 | 0 | 0 | 0.0 |
| 14 | TODD, Asia | 2-0 | 07:05 | 3.5 | 0-0 | .000 | 0-0 | .000 | 0-0 | .000 | 0 | 1 | 1 | 0.5 | 0 | 0 | 0 | 1 | 0 | 0 | 0 | 0.0 |
| 22 | GODBOLT, Sierra | 2-0 | 10:14 | 5.1 | 0-2 | .000 | 0-0 | .000 | 0-0 | .000 | 0 | 0 | 0 | 0.0 | 0 | 0 | 1 | 3 | 0 | 0 | 0 | 0.0 |
| 35 | NGODU, Khyala | 2-0 | 26:59 | 13.5 | 0-1 | .000 | 0-0 | .000 | 0-0 | .000 | 2 | 8 | 10 | 5.0 | 5 | 1 | 0 | 0 | 0 | 3 | 0 | 0.0 |
| Team | | | | | | | | | | | | 1 | 1 | | | | | | | 3 | | |
| Total | | 2 | 400 | | 42-116 | .362 | 8-28 | .286 | 23-36 | .639 | 20 | 46 | 66 | 33.0 | 36 | 1 | 14 | 40 | 4 | 11 | 115 | 57.5 |
| Opponents | | 2 | 400 | | 50-126 | .397 | 11-41 | .268 | 22-34 | .647 | 25 | 45 | 70 | 35.0 | 33 | 1 | 29 | 29 | 10 | 20 | 133 | 66.5 |

Score by Periods

| Team | 1st | 2nd | 3rd | 4th | OT | TOT |
|-----------|-----|-----|-----|-----|----|-----|
| UCF | 33 | 16 | 30 | 36 | 0 | 115 |
| Opponents | 32 | 26 | 40 | 35 | 0 | 133 |

UCF IN PUERTO RICO...
Game Records

| Record | Overall | Home | Away | Neutral |
|----------------|---------|------|------|---------|
| ALL GAMES | 3-0 | 0-0 | 0-0 | 3-0 |
| CONFERENCE | 0-0 | 0-0 | 0-0 | 0-0 |
| NON-CONFERENCE | 3-0 | 0-0 | 0-0 | 3-0 |

Team Box Score

| No. | Player | | | | Total | | 3-Point | | F-Throw | | Rebounds | | | | | | | | | | | |
|------------------|-------------------------|----------|------------|------|---------------|-------------|--------------|-------------|--------------|-------------|-----------|-----------|------------|-------------|-----------|----------|-----------|-----------|----------|-----------|------------|-------------|
| | | GP-GS | MIN | AVG | FG-FGA | FG% | 3FG-3FGA | 3FG% | FT-FTA | FT% | OFF | DEF | TOT | AVG | PF | DQ | A | TO | BLK | STL | PTS | AVG |
| 3 | PETERSON, Kaitlin | 3-3 | 111:54 | 37.3 | 22-49 | .449 | 6-16 | .375 | 15-20 | .750 | 1 | 15 | 16 | 5.3 | 6 | 0 | 2 | 5 | 1 | 4 | 65 | 21.7 |
| 10 | BURNS, Mya | 3-3 | 97:28 | 32.5 | 15-28 | .536 | 1-5 | .200 | 10-11 | .909 | 5 | 4 | 9 | 3.0 | 8 | 0 | 3 | 10 | 1 | 2 | 41 | 13.7 |
| 11 | AKOT, Achol | 3-3 | 80:50 | 26.9 | 12-20 | .600 | 0-0 | .000 | 2-6 | .333 | 9 | 23 | 32 | 10.7 | 7 | 0 | 5 | 13 | 1 | 3 | 26 | 8.7 |
| 0 | JEWETT, Laila | 3-3 | 107:38 | 35.9 | 6-19 | .316 | 1-4 | .250 | 4-4 | 1.000 | 0 | 9 | 9 | 3.0 | 4 | 0 | 13 | 5 | 0 | 3 | 17 | 5.7 |
| 15 | GIBSON, Taylor | 3-0 | 47:23 | 15.8 | 7-10 | .700 | 0-0 | .000 | 1-1 | 1.000 | 2 | 2 | 4 | 1.3 | 7 | 0 | 2 | 1 | 0 | 0 | 15 | 5.0 |
| 35 | NGODU, Khyala | 3-0 | 43:38 | 14.5 | 5-10 | .500 | 0-0 | .000 | 2-2 | 1.000 | 3 | 10 | 13 | 4.3 | 8 | 1 | 4 | 5 | 0 | 2 | 12 | 4.0 |
| 24 | KELLY, Jayla | 3-3 | 49:31 | 16.5 | 3-5 | .600 | 0-0 | .000 | 6-8 | .750 | 4 | 10 | 14 | 4.7 | 9 | 1 | 4 | 8 | 2 | 0 | 12 | 4.0 |
| 21 | WARE, Timia | 2-0 | 23:26 | 11.7 | 1-5 | .200 | 0-3 | .000 | 1-2 | .500 | 0 | 1 | 1 | 0.5 | 4 | 0 | 2 | 1 | 0 | 0 | 3 | 1.5 |
| 22 | GODBOLT, Sierra | 3-0 | 27:32 | 9.2 | 1-2 | .500 | 0-0 | .000 | 0-0 | .000 | 0 | 1 | 1 | 0.3 | 3 | 0 | 4 | 2 | 0 | 0 | 2 | 0.7 |
| 30 | ROBINSON-NWAGWU, Morgan | 3-0 | 10:41 | 3.6 | 0-0 | .000 | 0-0 | .000 | 0-0 | .000 | 0 | 1 | 1 | 0.3 | 4 | 0 | 0 | 2 | 0 | 0 | 0 | 0.0 |
| Team | | | | | | | | | | | 8 | 7 | 15 | | | | | | | 3 | | |
| Total | | 3 | 600 | | 72-148 | .486 | 8-28 | .286 | 41-54 | .759 | 32 | 83 | 115 | 38.3 | 60 | 2 | 39 | 55 | 5 | 14 | 193 | 64.3 |
| Opponents | | 3 | 600 | | 52-169 | .308 | 12-52 | .231 | 44-62 | .710 | 40 | 54 | 94 | 31.3 | 57 | 1 | 18 | 36 | 2 | 23 | 160 | 53.3 |

Score by Periods

| Team | 1st | 2nd | 3rd | 4th | OT | TOT |
|-----------|-----|-----|-----|-----|----|-----|
| UCF | 52 | 51 | 54 | 36 | 0 | 193 |
| Opponents | 34 | 39 | 45 | 42 | 0 | 160 |

TEAM GAME HIGHS
UCF - Game Highs

| | | |
|------------------------------|--------------|----------------------------------|
| POINTS | 101 | Bethune-Cookman (11/06/2023) |
| | 96 | Anderson (SC) (11/13/2023) |
| | 72 | New Orleans (12/11/2023) |
| | 69 | vs Sacred Heart (N) (11/25/2023) |
| | 67 | Morgan St. (12/19/2023) |
| FIELD GOALS MADE | 36 | Bethune-Cookman (11/06/2023) |
| | 34 | Anderson (SC) (11/13/2023) |
| FIELD GOAL ATTEMPTS | 76 | Anderson (SC) (11/13/2023) |
| | 74 | Bethune-Cookman (11/06/2023) |
| FIELD GOAL PERCENTAGE | .548 (23-42) | Morgan St. (12/19/2023) |
| | .531 (26-49) | vs Sacred Heart (N) (11/25/2023) |
| 3 PT FG MADE | 13 | Bethune-Cookman (11/06/2023) |
| | 12 | New Orleans (12/11/2023) |
| 3 PT FG ATTEMPTS | 29 | New Orleans (12/11/2023) |
| | 25 | Bethune-Cookman (11/06/2023) |
| 3 PT FG PERCENTAGE | .538 (7-13) | Morgan St. (12/19/2023) |
| | .520 (13-25) | Bethune-Cookman (11/06/2023) |
| FREE THROWS MADE | 24 | Anderson (SC) (11/13/2023) |
| | 21 | vs Jackson St. (N) (11/23/2023) |
| FREE THROW ATTEMPTS | 28 | vs Jackson St. (N) (11/23/2023) |
| | 28 | Anderson (SC) (11/13/2023) |
| FREE THROW PERCENTAGE | .875 (14-16) | Morgan St. (12/19/2023) |
| | .857 (24-28) | Anderson (SC) (11/13/2023) |
| REBOUNDS | 58 | Anderson (SC) (11/13/2023) |
| | 57 | New Orleans (12/11/2023) |
| ASSISTS | 20 | Bethune-Cookman (11/06/2023) |
| | 17 | Morgan St. (12/19/2023) |
| STEALS | 13 | Fla. Atlantic (12/18/2023) |
| | 12 | Anderson (SC) (11/13/2023) |
| BLOCKED SHOTS | 4 | Oklahoma St. (01/03/2024) |
| | 4 | New Orleans (12/11/2023) |
| | 4 | Campbell (12/03/2023) |
| | 4 | vs Sacred Heart (N) (11/25/2023) |
| | 4 | Bethune-Cookman (11/06/2023) |
| TURNOVERS | 25 | at Oklahoma (12/30/2023) |
| | 25 | vs Jackson St. (N) (11/23/2023) |
| FOULS | 27 | vs Jackson St. (N) (11/23/2023) |
| | 25 | Oklahoma St. (01/03/2024) |

OPPONENT TEAM GAME HIGHS
Opponent - Game Highs

| | | |
|------------------------------|--------------|-------------------------------------|
| POINTS | 73 | Anderson (SC) (11/13/2023) |
| | 72 | Kansas St. (01/06/2024) |
| | 69 | at Oklahoma (12/30/2023) |
| | 68 | Oklahoma St. (01/03/2024) |
| | 64 | at Cincinnati (01/10/2024) |
| FIELD GOALS MADE | 32 | Kansas St. (01/06/2024) |
| | 27 | at Oklahoma (12/30/2023) |
| FIELD GOAL ATTEMPTS | 72 | Anderson (SC) (11/13/2023) |
| | 66 | at Oklahoma (12/30/2023) |
| FIELD GOAL PERCENTAGE | .561 (32-57) | Kansas St. (01/06/2024) |
| | .444 (20-45) | Fla. Atlantic (12/18/2023) |
| 3 PT FG MADE | 10 | Fla. Atlantic (12/18/2023) |
| | 8 | at Cincinnati (01/10/2024) |
| 3 PT FG ATTEMPTS | 22 | Oklahoma St. (01/03/2024) |
| | 22 | at Oklahoma (12/30/2023) |
| 3 PT FG PERCENTAGE | .500 (10-20) | Fla. Atlantic (12/18/2023) |
| | .421 (8-19) | at Cincinnati (01/10/2024) |
| FREE THROWS MADE | 20 | Anderson (SC) (11/13/2023) |
| | 18 | Oklahoma St. (01/03/2024) |
| FREE THROW ATTEMPTS | 29 | vs Jackson St. (N) (11/23/2023) |
| | 26 | Oklahoma St. (01/03/2024) |
| FREE THROW PERCENTAGE | .833 (20-24) | Anderson (SC) (11/13/2023) |
| | .833 (15-18) | vs St. John's (NY) (N) (11/24/2023) |
| REBOUNDS | 36 | at Oklahoma (12/30/2023) |
| | 36 | Anderson (SC) (11/13/2023) |
| ASSISTS | 18 | at Oklahoma (12/30/2023) |
| | 16 | Kansas St. (01/06/2024) |
| STEALS | 15 | at Oklahoma (12/30/2023) |
| | 14 | Morgan St. (12/19/2023) |
| BLOCKED SHOTS | 9 | Kansas St. (01/06/2024) |
| | 6 | at Oklahoma (12/30/2023) |
| | 6 | Campbell (12/03/2023) |
| | 6 | Auburn (11/20/2023) |
| TURNOVERS | 26 | Campbell (12/03/2023) |
| | 22 | Fla. Atlantic (12/18/2023) |
| FOULS | 27 | vs Jackson St. (N) (11/23/2023) |
| | 21 | Anderson (SC) (11/13/2023) |
| | 21 | Bethune-Cookman (11/06/2023) |

TEAM GAME LOWS
UCF - Game Lows

| | | | |
|------------------------------|------|---------|-------------------------------------|
| POINTS | 42 | | Campbell (12/03/2023) |
| | 52 | | at Oklahoma (12/30/2023) |
| | 56 | | Kansas St. (01/06/2024) |
| | 58 | | Fla. Atlantic (12/18/2023) |
| | 60 | | Auburn (11/20/2023) |
| FIELD GOALS MADE | 13 | | Campbell (12/03/2023) |
| | 19 | | at Oklahoma (12/30/2023) |
| FIELD GOAL ATTEMPTS | 42 | | Morgan St. (12/19/2023) |
| | 46 | | vs Jackson St. (N) (11/23/2023) |
| | 46 | | Auburn (11/20/2023) |
| FIELD GOAL PERCENTAGE | .232 | (13-56) | Campbell (12/03/2023) |
| | .333 | (19-57) | at Oklahoma (12/30/2023) |
| 3 PT FG MADE | 0 | | vs Jackson St. (N) (11/23/2023) |
| | 2 | | Fla. Atlantic (12/18/2023) |
| | 2 | | vs St. John's (NY) (N) (11/24/2023) |
| 3 PT FG ATTEMPTS | 7 | | vs Jackson St. (N) (11/23/2023) |
| | 9 | | vs St. John's (NY) (N) (11/24/2023) |
| 3 PT FG PERCENTAGE | .000 | (0-7) | vs Jackson St. (N) (11/23/2023) |
| | .133 | (2-15) | Fla. Atlantic (12/18/2023) |
| FREE THROWS MADE | 4 | | New Orleans (12/11/2023) |
| | 9 | | at Oklahoma (12/30/2023) |
| | 9 | | vs St. John's (NY) (N) (11/24/2023) |
| FREE THROW ATTEMPTS | 7 | | New Orleans (12/11/2023) |
| | 11 | | vs St. John's (NY) (N) (11/24/2023) |
| FREE THROW PERCENTAGE | .571 | (4-7) | New Orleans (12/11/2023) |
| | .579 | (11-19) | Kansas St. (01/06/2024) |
| REBOUNDS | 27 | | Auburn (11/20/2023) |
| | 31 | | at Cincinnati (01/10/2024) |
| ASSISTS | 6 | | at Cincinnati (01/10/2024) |
| | 6 | | Fla. Atlantic (12/18/2023) |
| STEALS | 4 | | vs St. John's (NY) (N) (11/24/2023) |
| | 4 | | vs Jackson St. (N) (11/23/2023) |
| BLOCKED SHOTS | 0 | | vs St. John's (NY) (N) (11/24/2023) |
| | 0 | | Auburn (11/20/2023) |
| TURNOVERS | 12 | | Fla. Atlantic (12/18/2023) |
| | 12 | | Bethune-Cookman (11/06/2023) |
| FOULS | 8 | | Morgan St. (12/19/2023) |
| | 11 | | Campbell (12/03/2023) |

OPPONENT TEAM GAME LOWS
Opponent - Game Lows

| | | |
|------------------------------|--------------|-------------------------------------|
| POINTS | 41 | Morgan St. (12/19/2023) |
| | 41 | Campbell (12/03/2023) |
| | 45 | New Orleans (12/11/2023) |
| | 48 | vs St. John's (NY) (N) (11/24/2023) |
| | 53 | Auburn (11/20/2023) |
| FIELD GOALS MADE | 14 | vs St. John's (NY) (N) (11/24/2023) |
| | 16 | Morgan St. (12/19/2023) |
| | 16 | New Orleans (12/11/2023) |
| FIELD GOAL ATTEMPTS | 42 | Campbell (12/03/2023) |
| | 44 | vs St. John's (NY) (N) (11/24/2023) |
| FIELD GOAL PERCENTAGE | .267 (16-60) | New Orleans (12/11/2023) |
| | .281 (16-57) | Morgan St. (12/19/2023) |
| 3 PT FG MADE | 2 | New Orleans (12/11/2023) |
| | 2 | Auburn (11/20/2023) |
| 3 PT FG ATTEMPTS | 13 | Campbell (12/03/2023) |
| | 14 | Morgan St. (12/19/2023) |
| 3 PT FG PERCENTAGE | .133 (2-15) | New Orleans (12/11/2023) |
| | .133 (2-15) | Auburn (11/20/2023) |
| FREE THROWS MADE | 0 | Campbell (12/03/2023) |
| | 3 | Kansas St. (01/06/2024) |
| FREE THROW ATTEMPTS | 2 | Campbell (12/03/2023) |
| | 5 | Kansas St. (01/06/2024) |
| FREE THROW PERCENTAGE | .000 (0-2) | Campbell (12/03/2023) |
| | .500 (6-12) | Bethune-Cookman (11/06/2023) |
| REBOUNDS | 24 | Morgan St. (12/19/2023) |
| | 26 | vs St. John's (NY) (N) (11/24/2023) |
| ASSISTS | 4 | vs Jackson St. (N) (11/23/2023) |
| | 6 | Morgan St. (12/19/2023) |
| STEALS | 4 | vs St. John's (NY) (N) (11/24/2023) |
| | 5 | at Cincinnati (01/10/2024) |
| | 5 | Fla. Atlantic (12/18/2023) |
| | 5 | Bethune-Cookman (11/06/2023) |
| BLOCKED SHOTS | 0 | vs Sacred Heart (N) (11/25/2023) |
| | 1 | Morgan St. (12/19/2023) |
| | 1 | vs St. John's (NY) (N) (11/24/2023) |
| | 1 | vs Jackson St. (N) (11/23/2023) |
| TURNOVERS | 9 | vs Sacred Heart (N) (11/25/2023) |
| | 11 | Kansas St. (01/06/2024) |
| FOULS | 14 | at Oklahoma (12/30/2023) |
| | 15 | Morgan St. (12/19/2023) |
| | 15 | New Orleans (12/11/2023) |
| | 15 | vs Sacred Heart (N) (11/25/2023) |
| | 15 | vs St. John's (NY) (N) (11/24/2023) |

INDIVIDUAL GAME HIGHS
UCF - Individual Game Highs

| | | | |
|---|-------|--|--|
| POINTS | 35 | | Kaitlin Peterson at Cincinnati (01/10/2024) |
| | 32 | | Kaitlin Peterson vs Sacred Heart (N) (11/25/2023) |
| | 31 | | Kaitlin Peterson vs Bethune-Cookman (11/06/2023) |
| | 22 | | Kaitlin Peterson vs Kansas St. (01/06/2024) |
| | 22 | | Kaitlin Peterson vs Oklahoma St. (01/03/2024) |
| FIELD GOALS MADE | 12 | | Kaitlin Peterson vs Bethune-Cookman (11/06/2023) |
| | 11 | | Kaitlin Peterson vs Sacred Heart (N) (11/25/2023) |
| FIELD GOAL ATTEMPTS | 26 | | Kaitlin Peterson at Cincinnati (01/10/2024) |
| | 23 | | Kaitlin Peterson vs Kansas St. (01/06/2024) |
| FIELD GOAL PERCENTAGE (min 5 made) | 1.000 | (6-6) | Achol Akot at Cincinnati (01/10/2024) |
| | .857 | (6-7) | Achol Akot vs Sacred Heart (N) (11/25/2023) |
| 3 PT FG MADE | 7 | | Laila Jewett vs New Orleans (12/11/2023) |
| | 6 | | Kaitlin Peterson vs Bethune-Cookman (11/06/2023) |
| 3 PT FG ATTEMPTS | 14 | | Kaitlin Peterson vs New Orleans (12/11/2023) |
| | 11 | | Kaitlin Peterson at Cincinnati (01/10/2024) |
| 3 PT FG PERCENTAGE (min 2 made) | 1.000 | (2-2) | Laila Jewett vs Morgan St. (12/19/2023) |
| | 1.000 | (2-2) | Asia Todd vs Bethune-Cookman (11/06/2023) |
| FREE THROWS MADE | 12 | | Kaitlin Peterson at Cincinnati (01/10/2024) |
| | 9 | | Kaitlin Peterson vs Jackson St. (N) (11/23/2023) |
| FREE THROW ATTEMPTS | 15 | | Kaitlin Peterson at Cincinnati (01/10/2024) |
| | 13 | | Kaitlin Peterson vs Jackson St. (N) (11/23/2023) |
| FREE THROW PERCENTAGE (min 3 made) | 1.000 | (6-6) | Kaitlin Peterson vs Sacred Heart (N) (11/25/2023) |
| | 1.000 | (6-6) | Mya Burns vs Jackson St. (N) (11/23/2023) |
| | 1.000 | (6-6) | Taylor Gibson vs Anderson (SC) (11/13/2023) |
| | 1.000 | (4-4) | Kaitlin Peterson vs Oklahoma St. (01/03/2024) |
| | 1.000 | (4-4) | Khyala Ngodu vs Oklahoma St. (01/03/2024) |
| | 1.000 | (4-4) | Morgan Robinson-Nwagwu vs Anderson (SC) (11/13/2023) |
| | 1.000 | (3-3) | Timia Ware vs Bethune-Cookman (11/06/2023) |
| REBOUNDS | 14 | | Achol Akot vs Bethune-Cookman (11/06/2023) |
| | 13 | | Achol Akot vs St. John's (NY) (N) (11/24/2023) |
| ASSISTS | 7 | | Laila Jewett vs Sacred Heart (N) (11/25/2023) |
| | 7 | | Achol Akot vs Bethune-Cookman (11/06/2023) |
| STEALS | 6 | | Kaitlin Peterson vs Fla. Atlantic (12/18/2023) |
| | 3 | | Khyala Ngodu at Cincinnati (01/10/2024) |
| | 3 | | Kaitlin Peterson at Oklahoma (12/30/2023) |
| | 3 | | Jayla Kelly vs Fla. Atlantic (12/18/2023) |
| | 3 | | Laila Jewett vs New Orleans (12/11/2023) |
| | 3 | | Kaitlin Peterson vs Jackson St. (N) (11/23/2023) |
| | 3 | | Laila Jewett vs Anderson (SC) (11/13/2023) |
| BLOCKED SHOTS | 3 | | Achol Akot vs Bethune-Cookman (11/06/2023) |
| | 2 | | Taylor Gibson vs Kansas St. (01/06/2024) |
| | 2 | | Mya Burns vs Fla. Atlantic (12/18/2023) |
| | 2 | | Jayla Kelly vs Campbell (12/03/2023) |
| | 2 | | Jayla Kelly vs Sacred Heart (N) (11/25/2023) |
| TURNOVERS | 6 | | Achol Akot vs Oklahoma St. (01/03/2024) |
| | 6 | | Achol Akot vs Auburn (11/20/2023) |
| FOULS | 5 | | Khyala Ngodu at Cincinnati (01/10/2024) |
| | 5 | | Achol Akot vs Oklahoma St. (01/03/2024) |
| FOULS | 5 | | Achol Akot vs Oklahoma St. (01/03/2024) |
| | 5 | | Jayla Kelly vs Oklahoma St. (01/03/2024) |
| | 5 | | Achol Akot vs Fla. Atlantic (12/18/2023) |
| | 5 | | Khyala Ngodu vs St. John's (NY) (N) (11/24/2023) |
| | 5 | | Jayla Kelly vs Jackson St. (N) (11/23/2023) |
| | 5 | | Mya Burns vs Auburn (11/20/2023) |
| | 5 | | Jayla Kelly vs Anderson (SC) (11/13/2023) |
| 5 | | Achol Akot vs Anderson (SC) (11/13/2023) | |

OPPONENT INDIVIDUAL GAME HIGHS
Opponent - Individual Game Highs

| | | | |
|---|-------|-------|--|
| POINTS | 22 | | Serena Sundell vs Kansas St. (01/06/2024) |
| | 18 | | Mya Perry vs Fla. Atlantic (12/18/2023) |
| | 17 | | Malea Williams at Cincinnati (01/10/2024) |
| | 17 | | Amelia Wood vs Sacred Heart (N) (11/25/2023) |
| | 17 | | Miya Crump vs Jackson St. (N) (11/23/2023) |
| | 17 | | Sydney Shaw vs Auburn (11/20/2023) |
| | 17 | | Zamiya Passmore vs Anderson (SC) (11/13/2023) |
| FIELD GOALS MADE | 10 | | Serena Sundell vs Kansas St. (01/06/2024) |
| | 7 | | Malea Williams at Cincinnati (01/10/2024) |
| | 7 | | Jaelyn Glenn vs Kansas St. (01/06/2024) |
| | 7 | | Sydney Shaw vs Auburn (11/20/2023) |
| | 7 | | Nelliah Wilson vs Anderson (SC) (11/13/2023) |
| FIELD GOAL ATTEMPTS | 18 | | Ny'Ceara Pryor vs Sacred Heart (N) (11/25/2023) |
| | 17 | | Miya Crump vs Jackson St. (N) (11/23/2023) |
| | 17 | | Brittney Stafford vs Anderson (SC) (11/13/2023) |
| FIELD GOAL PERCENTAGE (min 5 made) | 1.000 | (7-7) | Jaelyn Glenn vs Kansas St. (01/06/2024) |
| | .833 | (5-6) | Skylar Vann at Oklahoma (12/30/2023) |
| 3 PT FG MADE | 4 | | Braylyn Milton at Cincinnati (01/10/2024) |
| | 4 | | Mya Perry vs Fla. Atlantic (12/18/2023) |
| | 4 | | Unique Drake vs St. John's (NY) (N) (11/24/2023) |
| 3 PT FG ATTEMPTS | 9 | | Anna Gret Asi vs Oklahoma St. (01/03/2024) |
| | 8 | | Braylyn Milton at Cincinnati (01/10/2024) |
| | 8 | | Lexy Keys at Oklahoma (12/30/2023) |
| | 8 | | Sajada Bonner vs Sacred Heart (N) (11/25/2023) |
| | 8 | | Ber'Nyah Mayo vs St. John's (NY) (N) (11/24/2023) |
| | 8 | | Unique Drake vs St. John's (NY) (N) (11/24/2023) |
| 3 PT FG PERCENTAGE (min 2 made) | 1.000 | (3-3) | Janeta Rozentale vs Fla. Atlantic (12/18/2023) |
| | 1.000 | (2-2) | Jaelyn Glenn vs Kansas St. (01/06/2024) |
| | 1.000 | (2-2) | O'Mariyah Tucker vs Bethune-Cookman (11/06/2023) |
| FREE THROWS MADE | 10 | | Jillian Archer vs St. John's (NY) (N) (11/24/2023) |
| | 9 | | Ashlyn Sheridan vs Anderson (SC) (11/13/2023) |
| FREE THROW ATTEMPTS | 12 | | Jillian Archer vs St. John's (NY) (N) (11/24/2023) |
| | 10 | | Ashlyn Sheridan vs Anderson (SC) (11/13/2023) |
| FREE THROW PERCENTAGE (min 3 made) | 1.000 | (6-6) | Amelia Wood vs Sacred Heart (N) (11/25/2023) |
| | 1.000 | (4-4) | Zamiya Passmore vs Anderson (SC) (11/13/2023) |
| | 1.000 | (4-4) | Diamond McDowell vs Anderson (SC) (11/13/2023) |
| | 1.000 | (3-3) | Jayla Kimbrough vs New Orleans (12/11/2023) |
| REBOUNDS | 12 | | Christabel Ezumah vs Campbell (12/03/2023) |
| | 11 | | Malea Williams at Cincinnati (01/10/2024) |
| | 11 | | Angel Jackson vs Jackson St. (N) (11/23/2023) |
| | 11 | | Nelliah Wilson vs Anderson (SC) (11/13/2023) |
| ASSISTS | 7 | | Anna Gret Asi vs Oklahoma St. (01/03/2024) |
| | 4 | | Tamaria Rumph vs Morgan St. (12/19/2023) |
| | 4 | | Rose Caverly vs Fla. Atlantic (12/18/2023) |
| | 4 | | Mya Perry vs Fla. Atlantic (12/18/2023) |
| | 4 | | JaMya Mingo-Young vs Auburn (11/20/2023) |
| | 4 | | Zamiya Passmore vs Anderson (SC) (11/13/2023) |
| | 4 | | Kayla White vs Bethune-Cookman (11/06/2023) |
| STEALS | 7 | | Lexy Keys at Oklahoma (12/30/2023) |
| | 6 | | Tamaria Rumph vs Morgan St. (12/19/2023) |
| BLOCKED SHOTS | 7 | | Ayoka Lee vs Kansas St. (01/06/2024) |
| | 4 | | Kiersten Johnson at Oklahoma (12/30/2023) |
| | 4 | | Christabel Ezumah vs Campbell (12/03/2023) |

2023-24 BOX SCORES

GAME 1 - BETHUNE-COOKMAN

Orlando, Fla. (Addition Financial Arena) | Nov. 6, 2023

| Bethune-Cookman - 63 | | | | | | | | | | | | | Record: 0-1 | | | | | | | | | | | | | | | | | |
|----------------------|-----|-------|-------|------|-----------|-------|----|----|----|----|--------|-----|-------------|---|---|---|-----|--|--|--|--|--|--|--|--|--|--|--|--|--|
| NO. Name | Min | FG | 3P | FT | Rebounds | Fouls | TP | AS | TO | ST | Blocks | +/- | | | | | | | | | | | | | | | | | | |
| | | M/A | M/A | M/A | OR DR TOT | PF | | | | | BS BA | | | | | | | | | | | | | | | | | | | |
| 2 Kayla White | F | 28:30 | 3-14 | 1-5 | 0-0 | 0 | 2 | 2 | 2 | 1 | 7 | 4 | 3 | 0 | 1 | 0 | -38 | | | | | | | | | | | | | |
| 12 Chanelle McDonald | F | 27:40 | 2-4 | 0-0 | 0-0 | 0 | 7 | 7 | 5 | 1 | 4 | 0 | 1 | 0 | 2 | 0 | -8 | | | | | | | | | | | | | |
| 3 Karianna Woods | G | 29:33 | 3-6 | 0-0 | 1-2 | 2 | 2 | 3 | 0 | 1 | 7 | 2 | 2 | 2 | 0 | 1 | -21 | | | | | | | | | | | | | |
| 20 Nia Jordan | G | 24:52 | 4-9 | 1-3 | 0-0 | 1 | 2 | 4 | 3 | 1 | 9 | 0 | 1 | 1 | 0 | 0 | -26 | | | | | | | | | | | | | |
| 22 Chanel Wilson | G | 29:56 | 5-13 | 1-6 | 2-4 | 0 | 1 | 1 | 3 | 2 | 13 | 1 | 2 | 0 | 0 | 0 | -23 | | | | | | | | | | | | | |
| 1 D'Shantae Edwards | F | 17:03 | 1-2 | 0-0 | 3-6 | 0 | 2 | 2 | 3 | 4 | 5 | 1 | 0 | 0 | 0 | 0 | -28 | | | | | | | | | | | | | |
| 10 O'Mariyah Tucker | F | 09:54 | 3-6 | 2-2 | 0-0 | 1 | 1 | 2 | 2 | 1 | 8 | 0 | 0 | 1 | 0 | 2 | -13 | | | | | | | | | | | | | |
| 21 Kerrighan Dunn | F | 16:25 | 4-10 | 2-5 | 0-0 | 1 | 1 | 1 | 1 | 1 | 10 | 1 | 1 | 1 | 0 | 1 | -10 | | | | | | | | | | | | | |
| 22 Daimoni Dorsey | F | 08:28 | 0-0 | 0-0 | 0-0 | 3 | 3 | 0 | 0 | 0 | 0 | 0 | 0 | 0 | 0 | 0 | -16 | | | | | | | | | | | | | |
| 24 Camerah Langston | F | 07:39 | 0-1 | 0-0 | 0-0 | 2 | 2 | 2 | 0 | 0 | 0 | 0 | 3 | 0 | 0 | 0 | -7 | | | | | | | | | | | | | |
| Totals | | | 25-65 | 7-21 | 6-12 | 6 | 25 | 31 | 21 | 12 | 63 | 9 | 13 | 5 | 3 | 4 | -38 | | | | | | | | | | | | | |

| UCF - 101 | | | | | | | | | | | | | Record: 1-0 | | | | | | | | | | | | | | | | | |
|--------------------|-----|-------|-------|-------|-----------|-------|----|----|----|----|--------|-----|-------------|---|---|---|----|--|--|--|--|--|--|--|--|--|--|--|--|--|
| NO. Name | Min | FG | 3P | FT | Rebounds | Fouls | TP | AS | TO | ST | Blocks | +/- | | | | | | | | | | | | | | | | | | |
| | | M/A | M/A | M/A | OR DR TOT | PF | | | | | BS BA | | | | | | | | | | | | | | | | | | | |
| 11 Achol Akot | F | 18:11 | 2-9 | 0-0 | 3-5 | 8 | 6 | 14 | 3 | 4 | 7 | 7 | 0 | 0 | 3 | 2 | 24 | | | | | | | | | | | | | |
| 0 Laila Jewett | G | 35:01 | 6-12 | 2-3 | 0-1 | 0 | 4 | 4 | 2 | 5 | 14 | 4 | 0 | 1 | 0 | 0 | 42 | | | | | | | | | | | | | |
| 3 Kaitlin Peterson | G | 33:19 | 12-19 | 6-10 | 1-1 | 0 | 2 | 2 | 1 | 1 | 31 | 2 | 2 | 2 | 1 | 0 | 31 | | | | | | | | | | | | | |
| 10 Mya Burns | G | 32:49 | 2-7 | 1-3 | 5-6 | 3 | 3 | 6 | 2 | 5 | 10 | 2 | 2 | 2 | 0 | 0 | 30 | | | | | | | | | | | | | |
| 21 Timia Ware | G | 30:32 | 2-7 | 2-5 | 3-3 | 0 | 7 | 7 | 1 | 1 | 9 | 5 | 3 | 0 | 0 | 0 | 17 | | | | | | | | | | | | | |
| 15 Taylor Gibson | F | 17:12 | 3-6 | 0-1 | 2-2 | 0 | 3 | 3 | 0 | 1 | 8 | 0 | 0 | 1 | 0 | 0 | 19 | | | | | | | | | | | | | |
| 24 Jayla Kelly | F | 24:39 | 6-10 | 0-1 | 2-2 | 2 | 7 | 9 | 2 | 3 | 14 | 0 | 3 | 1 | 1 | 0 | 19 | | | | | | | | | | | | | |
| 14 Asia Todd | F | 08:17 | 3-4 | 2-2 | 0-0 | 1 | 0 | 1 | 1 | 1 | 8 | 0 | 2 | 1 | 0 | 0 | 8 | | | | | | | | | | | | | |
| Totals | | | 36-74 | 13-25 | 16-20 | 15 | 37 | 52 | 12 | 21 | 101 | 20 | 12 | 7 | 4 | 3 | 38 | | | | | | | | | | | | | |

| BCU | | UCF | | Points from Turnovers | | BCU | | UCF | | Period by Period Scoring | | | | | | | |
|------------------|--------------------------|---------------------------|---------------|-----------------------|----|-----|-----|-----|-----|--------------------------|-----|-----|-----|-----|-----|-----|-----|
| Biggest lead | 4 (1 st 6:12) | 38 (4 th 2:08) | Turnovers | 10 | 14 | 1st | 2nd | 3rd | 4th | TOT | BCU | UCF | 1st | 2nd | 3rd | 4th | TOT |
| Best Scoring Run | 6 (1 st 6:12) | 16 (4 th 2:08) | Paint | 28 | 36 | 13 | 14 | 20 | 16 | 63 | 13 | 14 | 20 | 16 | 63 | | |
| Lead Changes | 2 | | Second Chance | 6 | 19 | UCF | 14 | 16 | 26 | 37 | 101 | | | | | | |
| Times Tied | 4 | | Fast Breaks | 8 | 15 | | | | | | | | | | | | |
| Time with Lead | 02:30 | 35:00 | Bench | 23 | 30 | | | | | | | | | | | | |

GAME 2 - ANDERSON

Orlando, Fla. (Addition Financial Arena) | Nov. 13, 2023

| Anderson (SC) - 73 | | | | | | | | | | | | | Record: 2-1 | | | | | | | | | | | | | | | | | |
|---------------------|-----|-------|-------|------|-----------|-------|----|----|----|----|--------|-----|-------------|----|---|---|-----|--|--|--|--|--|--|--|--|--|--|--|--|--|
| NO. Name | Min | FG | 3P | FT | Rebounds | Fouls | TP | AS | TO | ST | Blocks | +/- | | | | | | | | | | | | | | | | | | |
| | | M/A | M/A | M/A | OR DR TOT | PF | | | | | BS BA | | | | | | | | | | | | | | | | | | | |
| 4 Diamond McDowell | F | 33:01 | 4-10 | 0-1 | 4-4 | 2 | 5 | 7 | 5 | 3 | 12 | 2 | 5 | 1 | 3 | 1 | -4 | | | | | | | | | | | | | |
| 30 Nolliah Wilson | F | 36:25 | 7-13 | 0-0 | 1-2 | 4 | 7 | 11 | 2 | 7 | 15 | 2 | 2 | 1 | 2 | 0 | -16 | | | | | | | | | | | | | |
| 11 Zamiya Passmore | G | 34:28 | 6-16 | 1-2 | 4-4 | 1 | 0 | 1 | 3 | 4 | 17 | 4 | 5 | 5 | 0 | 0 | -12 | | | | | | | | | | | | | |
| 23 Britney Stafford | G | 34:52 | 3-17 | 1-7 | 2-2 | 4 | 2 | 6 | 3 | 1 | 9 | 3 | 4 | 3 | 0 | 0 | -28 | | | | | | | | | | | | | |
| 44 Ashlyn Sheridan | G | 31:02 | 3-8 | 1-2 | 9-10 | 1 | 4 | 5 | 2 | 4 | 16 | 0 | 1 | 2 | 0 | 0 | -8 | | | | | | | | | | | | | |
| 21 Martyna Radzicka | F | 08:59 | 0-2 | 0-2 | 0-0 | 0 | 0 | 0 | 1 | 0 | 0 | 0 | 1 | 0 | 0 | 0 | -4 | | | | | | | | | | | | | |
| 20 Peyton Oliver | F | 05:32 | 0-1 | 0-1 | 0-0 | 0 | 1 | 1 | 3 | 1 | 0 | 0 | 0 | 0 | 0 | 0 | -11 | | | | | | | | | | | | | |
| 2 Maggie Campbell | F | 04:51 | 0-1 | 0-1 | 0-0 | 0 | 0 | 0 | 0 | 0 | 0 | 0 | 0 | 0 | 0 | 0 | -12 | | | | | | | | | | | | | |
| 40 Alana Eakie | F | 03:40 | 1-3 | 0-2 | 0-0 | 0 | 1 | 1 | 2 | 1 | 2 | 0 | 0 | 0 | 0 | 0 | -8 | | | | | | | | | | | | | |
| 1 Leslie Marios | F | 03:35 | 1-1 | 0-0 | 0-0 | 0 | 0 | 0 | 0 | 0 | 0 | 0 | 0 | 0 | 0 | 0 | -7 | | | | | | | | | | | | | |
| 25 Olivia Johrgan | F | 03:35 | 0-0 | 0-0 | 0-0 | 1 | 0 | 1 | 0 | 0 | 0 | 0 | 0 | 0 | 0 | 0 | -7 | | | | | | | | | | | | | |
| Totals | | | 25-72 | 3-18 | 20-24 | 15 | 21 | 36 | 21 | 21 | 73 | 11 | 21 | 12 | 5 | 1 | -23 | | | | | | | | | | | | | |

| UCF - 96 | | | | | | | | | | | | | Record: 2-0 | | | | | | | | | | | | | | | | | | |
|---------------------------|-----|-------|-------|------|-----------|-------|----|----|----|----|--------|-----|-------------|----|---|---|----|----|--|--|--|--|--|--|--|--|--|--|--|--|--|
| NO. Name | Min | FG | 3P | FT | Rebounds | Fouls | TP | AS | TO | ST | Blocks | +/- | | | | | | | | | | | | | | | | | | | |
| | | M/A | M/A | M/A | OR DR TOT | PF | | | | | BS BA | | | | | | | | | | | | | | | | | | | | |
| 11 Achol Akot | F | 11:57 | 7-10 | 0-0 | 0-0 | 3 | 3 | 6 | 5 | 0 | 14 | 1 | 1 | 2 | 0 | 0 | 10 | | | | | | | | | | | | | | |
| 24 Jayla Kelly | G | 22:01 | 2-4 | 0-0 | 0-0 | 2 | 5 | 7 | 5 | 1 | 4 | 1 | 4 | 1 | 0 | 2 | 17 | | | | | | | | | | | | | | |
| 0 Laila Jewett | C | 31:47 | 4-8 | 2-3 | 2-2 | 2 | 3 | 5 | 0 | 2 | 12 | 5 | 4 | 3 | 0 | 0 | 21 | | | | | | | | | | | | | | |
| 3 Kaitlin Peterson | G | 25:31 | 5-13 | 1-5 | 7-10 | 3 | 0 | 3 | 2 | 6 | 18 | 0 | 1 | 1 | 0 | 1 | 6 | | | | | | | | | | | | | | |
| 10 Mya Burns | G | 30:00 | 6-21 | 0-2 | 4-5 | 4 | 7 | 11 | 3 | 6 | 16 | 0 | 3 | 0 | 0 | 1 | 6 | | | | | | | | | | | | | | |
| 30 Morgan Robinson-Nwagwu | F | 11:43 | 4-4 | 1-1 | 4-4 | 2 | 1 | 3 | 2 | 2 | 13 | 1 | 0 | 0 | 0 | 0 | 9 | | | | | | | | | | | | | | |
| 22 Sierra Godbolt | F | 20:47 | 0-2 | 0-1 | 0-0 | 0 | 0 | 0 | 0 | 1 | 0 | 0 | 3 | 2 | 2 | 0 | 0 | 10 | | | | | | | | | | | | | |
| 15 Taylor Gibson | F | 21:43 | 2-6 | 0-0 | 6-6 | 4 | 5 | 9 | 2 | 3 | 10 | 0 | 3 | 1 | 1 | 1 | 13 | | | | | | | | | | | | | | |
| 21 Timia Ware | F | 21:13 | 2-6 | 0-2 | 0-0 | 0 | 4 | 4 | 2 | 4 | 3 | 4 | 2 | 1 | 0 | 0 | 11 | | | | | | | | | | | | | | |
| 35 Khyala Ngodu | F | 03:18 | 2-2 | 0-0 | 1-1 | 0 | 1 | 1 | 0 | 1 | 5 | 0 | 0 | 0 | 0 | 0 | 7 | | | | | | | | | | | | | | |
| Totals | | | 34-76 | 4-14 | 24-28 | 24 | 34 | 58 | 24 | 21 | 96 | 14 | 23 | 12 | 1 | 5 | 23 | | | | | | | | | | | | | | |

| AND | | UCF | | Points from Turnovers | | AND | | UCF | | Period by Period Scoring | | | | | | | |
|------------------|---------------------------|---------------------------|---------------|--|----|-----|-----|-----|-----|--------------------------|-----|-----|-----|-----|-----|-----|-----|
| Biggest lead | 4 (1 st 7:03) | 23 (4 th 0:58) | Turnovers | 18 <th>23</th> <th>1st</th> <th>2nd</th> <th>3rd</th> <th>4th</th> <th>TOT</th> <th>AND</th> <th>UCF</th> <th>1st</th> <th>2nd</th> <th>3rd</th> <th>4th</th> <th>TOT</th> | 23 | 1st | 2nd | 3rd | 4th | TOT | AND | UCF | 1st | 2nd | 3rd | 4th | TOT |
| Best Scoring Run | 10 (3 rd 3:05) | 9 (4 th 0:58) | Paint | 32 | 52 | AND | 23 | 15 | 23 | 12 | 73 | | | | | | |
| Lead Changes | 8 | | Second Chance | 15 | 14 | UCF | 25 | 15 | 25 | 31 | 96 | | | | | | |
| Times Tied | 5 | | Fast Breaks | 13 | 22 | | | | | | | | | | | | |
| Time with Lead | 08:38 | 28:31 | Bench | 4 | 32 | | | | | | | | | | | | |

GAME 3 - AUBURN

Orlando, Fla. (Addition Financial Arena) | Nov. 20, 2023

| Auburn - 53 | | | | | | | | | | | | | Record: 3-2 | | | | | | | | | | | | | | | | | |
|--------------------------|-----|-------|-------|------|-----------|-------|----|----|----|----|--------|-----|-------------|---|---|---|-----|--|--|--|--|--|--|--|--|--|--|--|--|--|
| NO. Name | Min | FG | 3P | FT | Rebounds | Fouls | TP | AS | TO | ST | Blocks | +/- | | | | | | | | | | | | | | | | | | |
| | | M/A | M/A | M/A | OR DR TOT | PF | | | | | BS BA | | | | | | | | | | | | | | | | | | | |
| 14 Taylen Collins | F | 32:57 | 4-9 | 0-0 | 3-4 | 4 | 4 | 8 | 1 | 5 | 11 | 0 | 4 | 0 | 1 | 0 | -3 | | | | | | | | | | | | | |
| 30 Savannah Scott | C | 08:36 | 0-1 | 0-0 | 0-0 | 0 | 2 | 2 | 2 | 2 | 0 | 0 | 3 | 0 | 1 | 0 | -3 | | | | | | | | | | | | | |
| 5 Sydney Shaw | G | 28:34 | 7-16 | 2-8 | 1-2 | 0 | 3 | 3 | 1 | 0 | 17 | 0 | 2 | 0 | 0 | 0 | 9 | | | | | | | | | | | | | |
| 12 Mar'Shaun Bastic | G | 13:32 | 0-3 | 0-1 | 2-2 | 0 | 1 | 1 | 1 | 2 | 2 | 1 | 1 | 0 | 0 | 0 | 4 | | | | | | | | | | | | | |
| 23 Honesty Scott-Grayson | G | 14:32 | 2-6 | 0-2 | 0-0 | 0 | 0 | 0 | 4 | 2 | 4 | 0 | 1 | 0 | 0 | 0 | -14 | | | | | | | | | | | | | |
| 3 McKenna Eddings | G | 02:30 | 0-2 | 0-1 | 0-0 | 1 | 0 | 1 | 0 | 0 | 0 | 0 | 1 | 0 | 0 | 0 | -6 | | | | | | | | | | | | | |
| 1 Celia Sumbane | F | 21:16 | 3-5 | 0-1 | 0-0 | 1 | 0 | 1 | 3 | 0 | 6 | 1 | 2 | 2 | 1 | 0 | -9 | | | | | | | | | | | | | |
| 2 Ja'Mya Mingo-Young | G | 26:27 | 3-6 | 0-1 | 1-2 | 0 | 2 | 2 | 0 | 1 | 7 | 4 | 1 | 0 | 0 | 0 | -10 | | | | | | | | | | | | | |
| 4 Kaitlyn Duhon | F | 14:46 | 1-3 | 0-1 | 1-2 | 1 | 3 | 4 | 1 | 1 | 3 | 1 | 1 | 2 | 0 | 0 | 4 | | | | | | | | | | | | | |
| 20 Oyindamola Akinbolawa | F | 18:18 | 1-2 | 0-0 | 0-2 | 1 | 4 | 5 | 1 | 2 | 2 | 0 | 0 | 1 | 1 | 0 | -20 | | | | | | | | | | | | | |
| 15 Kionna Gaines | F | 01:47 | 0-0 | 0-0 | 0-0 | 0 | 0 | 0 | 0 | 0 | 0 | 0 | 0 | 0 | 0 | 0 | -3 | | | | | | | | | | | | | |
| 0 Yakiya Milton | F | 16:45 | 0-2 | 0-0 | 1-2 | 0 | 2 | 2 | 3 | 1 | 1 | 0 | 1 | 1 | 2 | 0 | 16 | | | | | | | | | | | | | |
| Totals | | | 21-55 | 2-15 | 9-16 | 12 | 22 | 34 | 17 | 16 | 53 | 7 | 18 | | | | | | | | | | | | | | | | | |

2023-24 BOX SCORES

GAME 5 - vs. St. John's

San Juan, P.R. (Coliseo Guillermo Angulo) | Nov. 24, 2023

UCF - 61 Record: 5-0. Box score table for UCF vs St. John's (Nov 24, 2023). Includes player stats, shooting percentages, and team totals.

St. John's (NY) - 48 Record: 2-4. Box score table for St. John's vs UCF (Nov 24, 2023). Includes player stats, shooting percentages, and team totals.

Summary statistics for Game 5: Biggest lead, Best Scoring Run, Lead Changes, Times Tied, Time with Lead, Points from Turnovers, Second Chance, Fast Breaks, Bench.

GAME 6 - vs. Sacred Heart

San Juan, P.R. (Coliseo Guillermo Angulo) | Nov. 23, 2023

UCF - 69 Record: 6-0. Box score table for UCF vs Sacred Heart (Nov 23, 2023). Includes player stats, shooting percentages, and team totals.

Sacred Heart - 58 Record: 4-3. Box score table for Sacred Heart vs UCF (Nov 23, 2023). Includes player stats, shooting percentages, and team totals.

Summary statistics for Game 6: Biggest lead, Best Scoring Run, Lead Changes, Times Tied, Time with Lead, Points from Turnovers, Second Chance, Fast Breaks, Bench.

GAME 7 - CAMPBELL

Orlando, Fla. (Addition Financial Arena) | Dec. 3, 2023

Campbell - 41 Record: 5-2. Box score table for Campbell vs UCF (Dec 3, 2023). Includes player stats, shooting percentages, and team totals.

UCF - 42 Record: 7-0. Box score table for UCF vs Campbell (Dec 3, 2023). Includes player stats, shooting percentages, and team totals.

Summary statistics for Game 7: Biggest lead, Best Scoring Run, Lead Changes, Times Tied, Time with Lead, Points from Turnovers, Second Chance, Fast Breaks, Bench.

GAME 8 - NEW ORLEANS

Orlando, Fla. (Addition Financial Arena) | Dec. 11, 2023

New Orleans - 45 Record: 1-8. Box score table for New Orleans vs UCF (Dec 11, 2023). Includes player stats, shooting percentages, and team totals.

UCF - 72 Record: 8-0. Box score table for UCF vs New Orleans (Dec 11, 2023). Includes player stats, shooting percentages, and team totals.

Summary statistics for Game 8: Biggest lead, Best Scoring Run, Lead Changes, Times Tied, Time with Lead, Points from Turnovers, Second Chance, Fast Breaks, Bench.

2023-24 BOX SCORES

GAME 9 - FLORIDA ATLANTIC

Orlando, Fla. (Addition Financial Arena) | Dec. 18, 2023

Box score for Game 9, Florida Atlantic vs UCF. Includes player stats, shooting percentages, and team totals.

Box score for Game 9, UCF vs FAU. Includes player stats, shooting percentages, and team totals.

Summary statistics for Game 9, including points from turnovers, paint, second chance, and fast breaks.

GAME 10 - MORGAN STATE

Orlando, Fla. (Addition Financial Arena) | Dec. 19, 2023

Box score for Game 10, Morgan State vs UCF. Includes player stats, shooting percentages, and team totals.

Box score for Game 10, UCF vs MSU. Includes player stats, shooting percentages, and team totals.

Summary statistics for Game 10, including points from turnovers, paint, second chance, and fast breaks.

GAME 11 - at Oklahoma

Norman, Ok. (Lloyd Noble Center) | Dec. 30, 2023

Box score for Game 11, UCF vs Oklahoma. Includes player stats, shooting percentages, and team totals.

Box score for Game 11, Oklahoma vs UCF. Includes player stats, shooting percentages, and team totals.

Summary statistics for Game 11, including points from turnovers, paint, second chance, and fast breaks.

GAME 12 - OKLAHOMA STATE

Orlando, Fla. (Addition Financial Arena) | Jan. 3, 2024

Box score for Game 12, Oklahoma State vs UCF. Includes player stats, shooting percentages, and team totals.

Box score for Game 12, UCF vs Oklahoma State. Includes player stats, shooting percentages, and team totals.

Summary statistics for Game 12, including points from turnovers, paint, second chance, and fast breaks.

2023-24 BOX SCORES

GAME 13 - KANSAS STATE

Orlando, Fla. (Addition Financial Arena) | Jan. 6, 2024

| Kansas St. - 72 | | Record: 15-1 (3-0) | | | | | | | | | | | | |
|-----------------|----------------|--------------------|-------|------|-----|-----------|-------|----|----|----|----|--------|----|----|
| NO. | Name | Min | FG | 3P | FT | Rebounds | Fouls | TP | AS | TO | ST | Blocks | +/ | |
| | | | M-A | M-A | M-A | OR DR TOT | PF FD | | | | | BS BA | | |
| 50 | Ayoka Lee | C 28:03 | 6-9 | 0-0 | 1-1 | 5 6 | 2 6 | 12 | 0 | 1 | 1 | 7 | 0 | 11 |
| 3 | Jaelyn Glenn | G 36:02 | 7-7 | 2-2 | 0-0 | 0 3 3 | 1 1 | 16 | 2 | 1 | 4 | 0 | 0 | 16 |
| 4 | Serena Sundell | G 35:00 | 10-14 | 2-3 | 0-0 | 1 3 4 | 3 2 | 22 | 2 | 4 | 0 | 0 | 0 | 11 |
| 5 | Brylee Glenn | G 11:37 | 1-1 | 0-0 | 0-0 | 2 2 1 | 1 1 | 2 | 1 | 0 | 0 | 0 | 0 | 0 |
| 12 | Gabby Gregory | G 29:25 | 3-9 | 0-4 | 3-4 | 1 2 3 | 0 5 9 | 3 | 0 | 0 | 1 | 0 | 0 | 7 |
| 30 | Gisela Sanchez | 16:11 | 3-7 | 0-2 | 0-0 | 0 2 2 | 4 0 6 | 3 | 2 | 0 | 0 | 0 | 0 | 9 |
| 1 | Zyanna Walker | 19:18 | 0-4 | 0-2 | 0-0 | 0 1 1 | 4 0 0 | 3 | 1 | 0 | 1 | 0 | 0 | 11 |
| 11 | Taryn Sides | 20:30 | 2-4 | 1-2 | 0-0 | 0 4 4 | 0 0 0 | 5 | 1 | 2 | 1 | 0 | 1 | 10 |
| 32 | Imani Lester | 03:54 | 0-2 | 0-0 | 0-0 | 1 1 2 | 1 0 0 | 1 | 0 | 0 | 0 | 1 | 0 | 5 |
| Team | | | | | | 0 2 2 | | 0 | | | | | | |
| Totals | | | 32-57 | 5-15 | 3-5 | 4 25 29 | 16 15 | 72 | 16 | 11 | 6 | 9 | 2 | 16 |

Technical Fouls: NONE

| UCF - 56 | | Record: 9-4 (0-3) | | | | | | | | | | | | |
|----------|------------------------|-------------------|-------|------|-------|-----------|-------|----|----|----|----|--------|-----|-----|
| NO. | Name | Min | FG | 3P | FT | Rebounds | Fouls | TP | AS | TO | ST | Blocks | +/ | |
| | | | M-A | M-A | M-A | OR DR TOT | PF FD | | | | | BS BA | | |
| 11 | Achol Akot | F 32:10 | 2-4 | 0-0 | 1-2 | 4 4 8 | 1 2 | 5 | 0 | 3 | 0 | 0 | 1 | -14 |
| 24 | Jayla Kelly | C 12:24 | 2-4 | 0-0 | 2-3 | 0 0 0 | 3 2 | 6 | 1 | 1 | 1 | 0 | 1 | -8 |
| 0 | Laila Jewett | G 28:28 | 3-9 | 0-0 | 3-4 | 0 1 1 | 2 2 9 | 3 | 1 | 0 | 0 | 1 | -17 | |
| 3 | Kaitlin Peterson | G 36:28 | 9-23 | 2-8 | 2-7 | 1 3 4 | 11 5 | 22 | 1 | 2 | 1 | 0 | 2 | -16 |
| 10 | Mya Burns | G 14:53 | 1-1 | 1-1 | 1-1 | 0 3 3 | 4 1 4 | 0 | 2 | 1 | 0 | 0 | 0 | 8 |
| 35 | Khyala Ngodu | 25:40 | 3-6 | 0-0 | 2-2 | 1 4 5 | 0 1 8 | 1 | 1 | 0 | 0 | 1 | -8 | |
| 30 | Morgan Robinson-Nwagwu | 26:30 | 1-4 | 0-1 | 0-0 | 2 4 6 | 2 3 2 | 3 | 1 | 2 | 0 | 1 | -6 | |
| 14 | Asia Todd | 05:48 | 0-2 | 0-0 | 0-0 | 0 0 0 | 0 0 0 | 0 | 0 | 0 | 0 | 0 | 2 | -2 |
| 22 | Sierra Godbolt | 01:00 | 0-0 | 0-0 | 0-0 | 0 0 0 | 0 0 0 | 0 | 0 | 0 | 0 | 0 | 0 | -5 |
| 15 | Taylor Gibson | 02:41 | 0-1 | 0-1 | 0-0 | 0 0 0 | 2 0 0 | 0 | 0 | 0 | 0 | 2 | 0 | -2 |
| 42 | Mary McMillan | 13:59 | 0-2 | 0-1 | 0-0 | 0 1 1 | 0 0 0 | 4 | 1 | 1 | 0 | 0 | 0 | 6 |
| Team | | | | | | 4 3 7 | | 0 | | | | | | |
| Totals | | | 21-55 | 3-12 | 11-19 | 12 23 35 | 15 16 | 56 | 13 | 13 | 6 | 2 | 9 | -16 |

Technical Fouls: NONE

| | KSU | | UCF | |
|------------------|---------------------------|--------------------------|-----|-----|
| | 1st | 2nd | 3rd | 4th |
| Biggest lead | 23 (3 rd 8:10) | 2 (1 st 9:31) | | |
| Best Scoring Run | 11 (3 rd 8:10) | 7 (3 rd 6:25) | | |
| Lead Changes | 1 | | | |
| Times Tied | 1 | | | |
| Time with Lead | 37:59 | 01:07 | | |

GAME 14 - at Cincinnati

Cincinnati, Ohio (Fifth Third Arena) | Jan. 10, 2024

| UCF - 63 | | Record: 9-5 (0-4) | | | | | | | | | | | | |
|----------|------------------------|-------------------|-------|------|-------|-----------|--------|----|----|----|----|--------|----|----|
| NO. | Name | Min | FG | 3P | FT | Rebounds | Fouls | TP | AS | TO | ST | Blocks | +/ | |
| | | | M-A | M-A | M-A | OR DR TOT | PF FD | | | | | BS BA | | |
| 11 | Achol Akot | F 24:51 | 6-6 | 0-0 | 1-3 | 3 2 5 | 4 2 13 | 0 | 0 | 0 | 1 | 0 | 3 | |
| 24 | Jayla Kelly | C 05:13 | 0-1 | 0-0 | 0-0 | 0 0 0 | 0 0 0 | 0 | 0 | 2 | 0 | 0 | 0 | |
| 0 | Laila Jewett | G 28:12 | 2-7 | 0-3 | 0-0 | 1 1 2 | 3 1 4 | 1 | 2 | 0 | 0 | 0 | 1 | |
| 3 | Kaitlin Peterson | G 40:00 | 10-26 | 3-11 | 12-15 | 2 3 5 | 1 9 35 | 2 | 3 | 1 | 0 | 1 | -1 | |
| 10 | Mya Burns | G 21:04 | 2-7 | 0-1 | 0-0 | 1 2 3 | 3 1 4 | 1 | 2 | 1 | 1 | 0 | -4 | |
| 35 | Khyala Ngodu | 19:28 | 0-1 | 0-0 | 0-0 | 1 7 8 | 5 0 0 | 0 | 0 | 0 | 0 | 0 | 0 | |
| 22 | Sierra Godbolt | 03:39 | 0-1 | 0-0 | 0-0 | 0 0 0 | 0 1 0 | 0 | 0 | 0 | 0 | 0 | 0 | |
| 30 | Morgan Robinson-Nwagwu | 19:23 | 1-5 | 0-1 | 0-2 | 4 3 7 | 2 2 2 | 1 | 1 | 0 | 0 | 2 | 3 | |
| 42 | Mary McMillan | 11:10 | 0-3 | 0-2 | 0-0 | 0 0 0 | 0 1 0 | 1 | 1 | 0 | 0 | 1 | -5 | |
| 15 | Taylor Gibson | 23:32 | 2-2 | 0-0 | 1-1 | 0 0 0 | 1 1 5 | 0 | 1 | 0 | 1 | 0 | 4 | |
| 14 | Asia Todd | 01:29 | 0-0 | 0-0 | 0-0 | 0 0 0 | 0 0 0 | 0 | 1 | 0 | 0 | 0 | -1 | |
| 25 | Femi Funeus | 01:59 | 0-0 | 0-0 | 0-0 | 0 0 1 | 1 0 0 | 0 | 1 | 0 | 0 | 0 | 0 | |
| Team | | | | | | 0 0 0 | | 0 | | | | | | |
| Totals | | | 23-59 | 3-18 | 14-21 | 12 19 31 | 20 18 | 63 | 6 | 15 | 5 | 3 | 4 | -1 |

Technical Fouls: Peterson 4th 0:50

| Cincinnati - 64 | | Record: 9-6 (1-3) | | | | | | | | | | | | |
|-----------------|----------------|-------------------|-------|------|-------|-----------|--------|----|----|----|----|--------|----|---|
| NO. | Name | Min | FG | 3P | FT | Rebounds | Fouls | TP | AS | TO | ST | Blocks | +/ | |
| | | | M-A | M-A | M-A | OR DR TOT | PF FD | | | | | BS BA | | |
| 20 | Jillian Hayes | F 27:18 | 4-10 | 1-1 | 3-5 | 5 4 9 | 2 7 12 | 3 | 1 | 0 | 0 | 1 | -5 | |
| 22 | Malea Williams | F 32:47 | 7-11 | 2-6 | 1-2 | 3 8 11 | 3 2 17 | 3 | 1 | 1 | 2 | 0 | 12 | |
| 3 | Reagan Jackson | G 19:14 | 1-9 | 0-2 | 0-0 | 0 1 1 | 3 0 2 | 1 | 2 | 0 | 0 | 0 | -1 | |
| 5 | Braylyn Milton | G 27:42 | 4-8 | 4-8 | 0-0 | 1 1 2 | 5 1 12 | 3 | 4 | 0 | 0 | 0 | 0 | |
| 34 | Ariel Jackson | G 29:46 | 2-8 | 0-1 | 4-6 | 2 3 5 | 0 5 8 | 0 | 2 | 1 | 0 | 1 | 8 | |
| 42 | Clarissa Craig | 15:34 | 2-4 | 0-0 | 1-1 | 1 0 1 | 1 2 5 | 0 | 1 | 1 | 0 | 0 | 5 | |
| 10 | Brianna Byars | 11:58 | 0-2 | 0-0 | 0-0 | 0 1 0 | 0 0 0 | 0 | 0 | 1 | 1 | 1 | -7 | |
| 11 | Ta'Ziah Jenks | 28:13 | 3-8 | 1-1 | 1-2 | 2 2 4 | 3 2 8 | 1 | 4 | 1 | 1 | 0 | -5 | |
| 6 | Aicha Dia | 07:28 | 0-0 | 0-0 | 0-0 | 0 0 0 | 2 0 0 | 0 | 0 | 2 | 0 | 0 | -6 | |
| Team | | | | | | 0 0 0 | | 0 | | | | | | |
| Totals | | | 23-60 | 8-19 | 10-16 | 14 20 34 | 19 19 | 64 | 11 | 17 | 5 | 4 | 3 | 1 |

Technical Fouls: Jenks 4th 0:50

| | UCF | | CIN | |
|------------------|--------------------------|---------------------------|-----|-----|
| | 1st | 2nd | 3rd | 4th |
| Biggest lead | 2 (1 st 3:42) | 11 (3 rd 4:18) | | |
| Best Scoring Run | 7 (1 st 3:42) | 10 (1 st 0:18) | | |
| Lead Changes | 4 | | | |
| Times Tied | 3 | | | |
| Time with Lead | 01:24 | 35:10 | | |

GAME 15 - WEST VIRGINIA

Orlando, Fla. (Addition Financial Arena) | Jan. 13, 2024

GAME 16 - at Baylor

Waco, Texas (Foster Pavillion) | Jan. 20, 2024

UCF PHOTO ROSTER



LAILA JEWETT

G • 5-10 • JR
Woodbridge, Va.



KAITLIN PETERSON

G • 5-9 • JR
Eufaula, Ala.



MYA BURNS

G • 6-0 • GR
North Augusta, S.C.



ACHOL AKOT

F • 6-1 • FR
Ottawa, Ontario



ASIA TODD

G • 5-9 • GR
Clayton, N.C.



TAYLOR GIBSON

F • 6-2 • JR
Upper Marlboro, Md.



TIMIA WARE

G • 5-6 • JR
Chicago, Ill.



SIERRA GODBOLT

PG • 5-6 • SO
Orlando, Fla.



ANZHANÉ HUTTON

F • 6-0 • SR
Dallas, Texas



JAYLA KELLY

C • 6-3 • SR
Chesterfield, Mo.



FEMI FUNEUS

F • 6-2 • GR
Plantation, Fla.



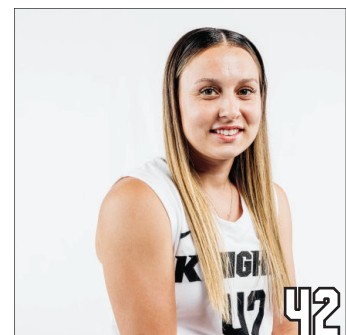
**MORGAN ROBINSON-
NWAGWU**

G • 5-8 • GR
Norcross, Ga.



KHYALA NGODU

C • 6-3 • FR
Fort Lauderdale, Fla.



MARY MCMILLAN

G • 5-6 • SR
Apopka, Fla.