



2025 GAME NOTES

2025 SCHEDULE

AUGUST

| | | |
|----|------------------|--------|
| 29 | Bucknell (ESPN+) | W, 3-0 |
| 30 | at Ohio (ESPN+) | W, 3-0 |

SEPTEMBER

| | | |
|----|-------------------------|--------|
| 5 | Central Michigan | W, 3-0 |
| 5 | at Milwaukee (ESPN+) | W, 3-0 |
| 6 | South Alabama | W, 3-0 |
| 9 | at UNI (ESPN+) | L, 1-3 |
| 12 | Saint Louis (ESPN+) | W, 3-0 |
| 14 | Omaha (ESPN+) | W, 3-1 |
| 17 | at Iowa% (BIG+) | W, 3-2 |
| 19 | Eastern Illinois (BIG+) | W, 3-1 |
| 20 | at Illinois (BTN) | W, 3-1 |
| 25 | *at No. 23 Utah (ESPN+) | W, 3-2 |
| 27 | *at No. 14 BYU (ESPN+) | L, 0-3 |

OCTOBER

| | | |
|----|------------------------------|--------|
| 2 | *Texas Tech (ESPN+) | W, 3-1 |
| 4 | *UCF (ESPN+) | W, 3-1 |
| 8 | *at Kansas State (ESPN+) | W, 3-2 |
| 10 | *at No. 15 Kansas (ESPN+) | L, 1-3 |
| 16 | *West Virginia (ESPN+) | W, 3-1 |
| 23 | *Arizona (ESPN+) | W, 3-0 |
| 25 | *at No. 24 Colorado (ESPN+) | L, 1-3 |
| 29 | *No. 18 Baylor (ESPN+) | W, 3-0 |
| 31 | *No. 6 Arizona State (ESPN+) | W, 3-2 |

NOVEMBER

| | | |
|----|---------------------------|----------|
| 8 | *at UCF (ESPN+) | 12:00 PM |
| 13 | *at Houston (ESPN+) | 7:00 PM |
| 15 | *No. 16 TCU (ESPN+) | 2:00 PM |
| 19 | *at Cincinnati (ESPN+) | 5:30 PM |
| 21 | *at West Virginia (ESPN+) | 5:00 PM |
| 26 | *No. 13 Kansas (ESPN+) | 6:30 PM |
| 29 | *Kansas State (ESPN+) | 2:00 PM |

*Big 12 Conference Match
%Iowa Corn Cy-Hawk Series
All Times Central

| | |
|-----------------------|-----------------------|
| Location | Ames, Iowa |
| Founded | 1858 |
| Enrollment | 31,105 |
| Nickname | Cyclones |
| Mascot | Cy |
| Colors | Cardinal & Gold |
| Affiliation | NCAA Division I |
| Conference | Big 12 |
| Facility | Hilton Coliseum |
| Capacity | 14,267 |
| President | Dr. Wendy Wintersteen |
| Director of Athletics | Jamie Pollard |

ABBY HANSEN

Athletics Communications



Iowa State Athletics
Jacobson Athletic Building
Ames, Iowa 50011

(515) 494-5291
abbyh1@iastate.edu

IOWA STATE VOLLEYBALL

17 NCAA TOURNAMENT APPEARANCES | 5 SWEET SIXTEENS | 2 ELITE EIGHTS

THE MATCHUP



#24 IOWA STATE CYCLONES

at



UCF KNIGHTS

| | |
|----------------|-----------------------|
| Overall Record | 18-4 |
| Big 12 Record | 8-3 |
| AVCA Rank | 24 |
| Head Coach | Christy Johnson-Lynch |
| Overall Record | 398-223 (21st year) |
| ISU Record | 398-223 (21st year) |

| | |
|----------------|--------------------|
| Overall Record | 13-9 |
| Big 12 Record | 4-7 |
| AVCA Rank | NR |
| Head Coach | Matt Botsford |
| Overall Record | 276-87 (12th year) |
| UCF Record | 13-9 (1st year) |

THE LEAD

No. 24 Iowa State meets UCF once again this season, this time on the Knight's home court for the first time in series history. ISU took down No. 6 Arizona State and No. 18 Baylor last week to enter the AVCA Coaches Poll at No. 24.

BROADCAST INFORMATION

Date/Time..... Saturday, Nov. 8 / 12 p.m. CT

Location/Venue The Venue / Orlando, Fla.



at UCF

Play-by-Play: Despina Barton

Analyst: Ainsley Clifford

Reporter: Cecily Webb



Live stats available on
cyclones.com

KEY STORYLINES

- Iowa State entered the AVCA Coaches Poll at No. 24 for the first time since 2023. The last time ISU was ranked this late in the season was in 2022. ISU is at No. 19 in the RPI.
- ISU picked up back-to-back ranked wins for the first time since 2012 with victories vs. No. 6 Arizona State and No. 18 Baylor. Christy Johnson-Lynch now owns 47 Top 25 wins and 12 Top 10.
- The Cyclones ended ASU's 12-match win streak and 26-match Big 12 win streak.
- ISU is 18-4, its best record through 22 matches since 2011. Iowa State ended non-conference at 10-1, the best record since 2017.
- Rachel Van Gorp earned her second Big 12 Defensive Player of the Week honor this season following the BU and ASU wins. The libero is one of two in the league to earn multiple this season and the ninth multi-time DPOTW in program history.
- RVG continues to put the nation on notice as she had 43 digs at 5.38 per set and held BU to .134 hitting and ASU to .179 last week. RVG had 25 digs in the sweep of Baylor (8.33/set), including 12 digs in the first and 10 in the second.
- Tierney Jackson led ISU with 24 kills and 29.5 points in week 10, and also put up eight blocks. Jackson tied her career high with 15 kills vs. ASU. Jackson ranks second in the Big 12 this season hitting at .367.
- Freshman Reagan Hanfelt, playing in just her ninth match, had 10 kills vs. ASU for her second 10-plus match. Hanfelt had 19 kills at .417, seven blocks and three aces to total 25.5 points. Hanfelt ranked 10th in the Big 12 in week 10 with the hitting pct.
- Iowa State ranks top 10 nationally with 14.29 kills per set, the ninth-highest average. ISU also ranks 13th nationally with 13.14 assists per set. The kill and assist averages lead the Big 12.
- ISU is one of three schools currently in the top 20 of the RPI that finished outside the top 80 of last season's final ranking.
- Christy Johnson-Lynch has transformed the program, leading ISU to 16 NCAA Tournament appearances while totaling 398 career victories. CJL holds the No. 3 highest Big 12 win total by a volleyball head coach with 215 league wins. She's the only active coach in the top five.

FOLLOW THE CYCLONES



/IowaStateVolleyball



@CycloneVB



@iowastatevb



cyclones.com

HEAD COACH

CHRISTY JOHNSON-LYNCH

21st Year at ISU

Twitter:

@CJohnsonLynch

College:

Nebraska, '96

Husband:

Joe Lynch

Children:

Addison & Jamison



COACH NOTES

- Named Iowa State volleyball head coach on Dec. 17, 2004.
- Led ISU to NCAA Volleyball Championships 16 times, with five tournament trips having reached the second weekend.
- 15 student-athletes have earned 27 AVCA All-America honors, while 30 student-athletes have earned 55 All-Big 12 honors. Prior to Johnson-Lynch's tenure, ISU had not had an All-America or All-Big 12 student-athlete.
- 215-141 record against Big 12 opponents. Prior to Johnson-Lynch, ISU was 13-167 in Big 12 play (1996-04).

AS A HEAD COACH

IOWA STATE (2005-present) 398-223 (.641)

CAREER (21 years) 398-223 (.641)

NCAA Tournament Appearances

2006, 2007, 2008, 2009, 2010, 2011, 2012, 2013, 2014, 2015, 2016, 2017, 2019, 2021, 2022, 2023

HONORS

- 2022 and 2009 AVCA Central Region and 2009 Big 12 Coach of the Year
- AVCA President in 2016-17 and member of AVCA Board of Directors from 2015-18
- 2010 Iowa State University Impact Award
- 2009 Asics/Volleyball Magazine National Coach of the Year
- 2009 Big 12 Coach of the Year

2025 IOWA STATE CYCLONES

2025 ROSTER

| No. | Name | Pos. | Ht. | Year | Hometown (Last School) |
|-----|-------------------------|-------|------|-------|--|
| 1 | Pam McCune | MB | 6-0 | Jr. | Upper Marlboro, Md. (St. John's) |
| 2 | Morgan Brandt | S | 6-0 | Sr. | Sumner, Iowa (Sumner-Fredericksburg) |
| 3 | Tierney Jackson | MB/RS | 6-4 | Sr. | Tulsa, Okla. (West Virginia) |
| 4 | Reagan Hanfelt | MB/RS | 6-0 | Fr. | Ankeny, Iowa (Ankeny) |
| 5 | Maya Duckworth | OH | 5-8 | Sr. | Hurst, Texas (Birdville) |
| 6 | Shae Pearson | MB | 6-2 | So. | Saint Charles, Mo. (Francis Howell Central) |
| 7 | Annalise Grant | L/DS | 5-4 | Fr. | West Des Moines, Iowa (Dowling) |
| 9 | Mesaiya Bettis | OH | 6-0 | Fr. | Apple Valley, Minn. (Burnsville) |
| 10 | Rachel Van Gorp | L | 5-9 | So. | Olathe, Kan. (Heritage Christian Academy) |
| 12 | Abbi Brenizer | MB/RS | 6-0 | Jr. | Norwalk, Iowa (Norwalk) |
| 13 | Lilly Wachholz | RS | 6-2 | R-Jr. | Waconia, Minn. (Mayer Lutheran) |
| 14 | Nayeli Gonzalez | OH | 6-2 | Jr. | San Antonio, Texas (Cornerstone Christian) |
| 17 | Ava Martin | S | 5-10 | So. | Leawood, Kan. (San Jose State) |
| 18 | Amiree Hendricks-Walker | MB | 6-2 | R-Sr. | Los Angeles, Calif. (South Florida) |
| 19 | Faith DeRonde | OH/RS | 5-11 | Sr. | Oskaloosa, Iowa (Oskaloosa) |
| 20 | Nayeli Ti'a | OH | 5-11 | R-Jr. | Livermore, Calif. (San Jose State) |
| 21 | Paula Krzeslak | DS/L | 5-6 | R-Sr. | Tomaszów Mazowiecki, Poland (Im. Jaroslawa Dabrowskiego) |
| 30 | Alea Goolsby | OH | 5-10 | Fr. | Olathe, Kan. (Saint Thomas Aquinas) |

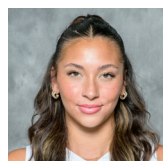
RADIO/TELEVISION CHART



Pam McCune
#1 / MB



Morgan Brandt
#2 / S



Tierney Jackson
#3 / MB



Reagan Hanfelt
#4 / MB/RS



Maya Duckworth
#5 / OH



Shae Pearson
#6 / MB



Annalise Grant
#7 / L/OH



Mesaiya Bettis
#9 / OH



Rachel Van Gorp
#10 / L



Abbi Brenizer
#12 / MB/RS



Lilly Wachholz
#13 / RS



Nayeli Gonzalez
#14 / OH



Ava Martin
#17 / S



Amiree Hendricks-Walker
#18 / MB



Faith DeRonde
#19 / OH/RS



Nayeli Ti'a
#20 / OH



Paula Krzeslak
#21 / DS/L



Alea Goolsby
#30 / OH

PRONUNCIATION GUIDE

| | |
|-------------------------|---------------------|
| Mesaiya Bettis | muh-SIGH-uh BET-tis |
| Abbi Brenizer | bren-EYE-zir |
| Faith DeRonde | de-RON-dee |
| Nayeli Gonzalez | nye-ELL-ee |
| Amiree Hendricks-Walker | ah-MIRR-ee |

| | |
|-----------------|-------------------|
| Tierney Jackson | TIER-knee |
| Paula Krzeslak | POW-la KAI-shlack |
| Pam McCune | mc-QUE-n |
| Nayeli Ti'a | NYE-uh-LEE TEE-uh |
| Lilly Wachholz | wok-HOLTS |



AMONG THE BEST

Christy Johnson-Lynch has cemented herself as one of the most winningest coaches in Big 12 history and continues to move up the all-time list. CJL is the only current Big 12 coach among the top five.

All-Time Big 12 Coaching Records

| Coach | W | L |
|---------------------------------|-----|-----|
| 1. Jerrett Elliot, UT ('01-'23) | 353 | 58 |
| 2. Ray Bechard, KU ('98-'24) | 239 | 250 |
| 3. Christy Johnson-Lynch, ISU | 215 | 141 |
| 4. John Cook, NU ('00-'10) | 207 | 13 |
| 5. Suzie Fritz, KSU ('01-'22) | 201 | 191 |

PRESEASON ALL-BIG 12

- Maya Duckworth earned her spot on the Preseason All-Big 12 Team. The senior is the 14th in Iowa State history to earn multiple preseason honors.
- Duckworth has totaled 1.023 career kills (No. 12 ISU), and 57 10-plus kill matches (No. 10 ISU).

Iowa State All-Time Career Kills

| | |
|-------------------------------|-------|
| 1. Victoria Henson (2006-10) | 1,726 |
| 2. Kirstin Hugdahl (1991-95) | 1,620 |
| 3. Steph McCannon (1992-95) | 1,566 |
| 4. Jess Schaben (2015-18) | 1,548 |
| 5. Eleanor Holthaus (2018-22) | 1,516 |
| 6. Erin Boeve (2004-07) | 1,334 |
| 7. Linda Evans (1984-87) | 1,235 |
| 8. Katie Jessen (2003-06) | 1,214 |
| 9. Tracy Graham (1987-91) | 1,138 |
| 10. Dana Burson (1986-89) | 1,042 |
| 11. Victoria Hurtt (2011-14) | 1,033 |
| 12. Maya Duckworth (2022-25) | 1,023 |

FRESHMEN DEVELOPMENT

- Rachel Van Gorp was a star right from the start beginning '24 as ISU's libero and transitioning into a hitting role. Van Gorp put up three double-doubles, 297 digs, 84 kills and a team-leading 23 aces.
- ISU produced back-to-back AVCA Midwest Region Freshmen of the Year in Maya Duckworth (2022) and Nayeli Gonzalez (2023). The duo both earned AVCA All-Region First Team honors in their first year out, the only freshmen in program history to do so.
- Gonzalez became the first Cyclone freshman to earn All-America honors or First Team All-Big 12 honors. She is the third Cyclone to earn Big 12 Rookie of the year and first since 2015. Gonzalez became the second ISU freshman to earn AVCA All-Region First Team and fourth Regional Freshman of the Year.

FAMILY TIES

- Rachel Van Gorp's late mother, Janice (Ninemire) Van Gorp who also wore No. 10, played volleyball at ISU from 1987-90 and was an All-Big Eight First Team selection. Ninemire evolved into a top attacker after beginning as a back-row player. She also competed on the track team in '88, finishing sixth in the triple jump at indoor conference.
- Ninemire still ranks sixth in all-time ISU history in career aces (122), 14th in matches played (120), 18th in digs (1,001) and 25th in kills (833). In 1990, Ninemire became the second Cyclone to hit 1,000 career digs.
- Reagan Hanfelt's mother Kelly (Cizek) Hanfelt was a member of the volleyball and track & field teams in 1997, and then played basketball from 1998-01.
- Cizek totaled 58 kills, 116 digs and 10 aces in volleyball, and as a high jumper medaled at both indoor and outdoor conference. In her four seasons as a forward, Cizek played in 96 games, tallying 228 rebounds, 221 points, 46 assists, 35 steals and 7 blocks.
- Faith DeRonde's mother Sarah (Wellings) DeRonde was on the track and field team from 1997-02.

KANSAS PIPELINE

- Olathe, Kansas natives Rachel Van Gorp and Alea Goolsby reunite following playing together in club. Fellow Kansas native Ava Martin played against the two in club ball.

"LIBERO U"

- Under Christy Johnson-Lynch's direction, Iowa State has earned Big 12 Libero of the Year 10 times. In addition, 17 players have earned 67 Big 12 Defensive Player of the Week honors since the award's 2007 introduction. The league's next highest total is 31 by Texas and Baylor.

CYCLONE NATION

- ISU volleyball program boasts one of the nation's top game-day environments thanks to Johnson-Lynch and ISU's success. Iowa State has ranked top 15 nationally in attendance in four of the last six seasons.
- Last season's Cy-Hawk meeting drew in the third-largest volleyball crowd in Hilton history with 5,523. Iowa State finished 2024 ranked 26th in the nation averaging 2,635.

| Category | ISU | UCF |
|--------------|-------|-------|
| Sets | 83 | 81 |
| Hitting Pct. | 0.256 | 0.242 |
| Kills/Set | 14.29 | 13.41 |
| Assists/Set | 13.14 | 12.16 |
| Aces/Set | 1.33 | 1.88 |
| Digs/Set | 14.41 | 12.84 |
| Blocks/Set | 1.84 | 2.27 |

SERIES HISTORY

vs

ISU LEADS 2-1

Home: Iowa State leads 1-0

Road: 0-0

Neutral: UCF leads 1-0 (2019)

Current Streak: 2 by Iowa State

Johnson-Lynch vs. UCF: 2-1

Matt Botsford vs. ISU: 0-2

SERIES NOTES

- While Botsford is in his first season leading UCF, he met the Cyclones during his time at FGCU. In '22, ISU won in five during the NCAA Tournament First Round.
- Iowa State will play at UCF for the first time in series history. Last season, the ISU at UCF match was canceled due to Hurricane Milton.



FROM THE **NOTEBOOK**

CYCLONES BY THE NUMBERS

- 1 Morgan Brandt leads all active Big 12 players with 3,514 career assists. The total ranks fourth in program history.
- 3 Christy Johnson-Lynch ranks No. 3 all time in Big 12 history with 215 league victories.
- 3 ISU hit over .400 in three-straight matches vs. Ohio, CMU and MKE, a program first. Two of those matches ranked in the program all-time top 10 (.0462 vs. CMU, No. 7 & 0.457 at MKE, No. 9).
- 5 The Cyclones hit at .333 or better in the first five matches. The last time ISU had a stretch of five-straight .300 matches happened in 1992.
- 8 Iowa State ended non-conference with a record of 10-1, the best mark in eight seasons.
- 9 Duckworth ranks ninth in Iowa State history with 58 10-plus kill career matches.
- 15 Nayeli Gonzalez totaled the 15th All-America honor in program history, earning honorable mention honors as a freshman in 2023.
- 15 ISU opened the season at 5-0 without losing a set, one of the final three teams to begins with 15 set wins. It marked the first time in program history to open the season with a 15-0 set record.

IN THE **POLLS**

| Week | AVCA | Week | AVCA |
|-----------|------|-------|------|
| Preseason | NR | 8 | RV |
| 1 | NR | 9 | RV |
| 2 | NR | 10 | 24 |
| 3 | NR | 11 | - |
| 4 | NR | 12 | - |
| 5 | RV | 13 | - |
| 6 | RV | 14 | - |
| 7 | RV | Final | - |

NATIONAL **POLLS**

AVCA Coaches Poll

1. Nebraska
2. Kentucky
3. Pitt
4. Texas
5. Stanford
6. Texas A&M
7. Louisville
8. Arizona State
9. Purdue
10. SMU
11. Wisconsin
12. Creighton
13. Kansas
14. Miami (FL)
15. UNC
16. TCU
17. USC
18. Indiana
19. Tennessee
20. Colorado
21. BYU
22. Minnesota
23. Baylor
24. Iowa State
25. Penn State

STANDINGS

| School | Big 12 | Overall |
|---------------|--------|---------|
| Colorado | 10-1 | 20-3 |
| Arizona State | 9-1 | 18-3 |
| Iowa State | 8-3 | 18-4 |
| Kansas | 8-3 | 17-8 |
| Baylor | 7-5 | 12-8 |
| BYU | 6-5 | 18-5 |
| TCU | 6-5 | 16-7 |
| Arizona | 6-5 | 12-9 |
| Kansas State | 5-6 | 12-7 |
| Cincinnati | 4-6 | 12-8 |
| UCF | 4-7 | 13-9 |
| Utah | 3-8 | 11-11 |
| West Virginia | 2-8 | 14-8 |
| Texas Tech | 2-8 | 10-12 |
| Houston | 1-10 | 8-14 |

HONORS

Offensive Player of the Week

-

Defensive Player of the Week

Rachel Van Gorp, Oct. 14

Rachel Van Gorp, Nov. 4

Rookie of the Week

Alea Goolsby, Sept. 23

JUST THE
FACTS

17

Iowa State has made 17 NCAA Tournament appearances, with 16 under Christy Johnson-Lynch's guidance.

18

The 2025 squad features 11 returners, four freshmen and three transfers.

21

The 2025 season marks Christy Johnson-Lynch's 21st season leading Iowa State.



SITUATIONAL RECORDS

| Situation | 2025 | Under CJL | Streak |
|----------------------------------|------|-----------|--------|
| Overall | 18-4 | 398-223 | W2 |
| Home | 8-0 | 200-76 | W8 |
| Road | 6-4 | 136-123 | L2 |
| Neutral | 4-0 | 63-25 | W5 |
| Big 12 | 8-3 | 215-141 | W2 |
| Big 12 Home | 6-0 | 123-53 | W6 |
| Big 12 Road | 2-3 | 91-87 | L2 |
| Non-conference | 10-1 | 182-78 | W5 |
| As AVCA Top-25 team | 0-0 | 137-50 | L1 |
| Vs. AVCA Top-5 team | 0-0 | 6-42 | L2 |
| Vs. AVCA Top-10 team | 1-0 | 12-68 | W1 |
| Vs. AVCA Top-25 team | 3-3 | 47-122 | W2 |
| Vs. unranked team | 15-1 | 351-98 | W10 |
| Three-set match | 8-1 | 216-87 | W2 |
| Four-set match | 6-3 | 116-79 | L1 |
| Five-set match | 4-0 | 65-53 | W4 |
| ISU wins set one | 13-1 | 329-59 | W2 |
| ISU loses set one | 5-3 | 67-164 | W1 |
| ISU leads in kills | 17-2 | 358-52 | W1 |
| Tied or opp. leads in kills | 1-2 | 39-171 | W1 |
| ISU leads in digs | 14-1 | 338-89 | W15 |
| Tied or opp. leads in digs | 4-3 | 61-133 | W2 |
| ISU leads in blocks | 7-0 | 271-57 | W7 |
| Tied or opp. leads in blocks | 11-4 | 126-166 | W2 |
| ISU has higher hit pct. | 16-1 | 372-31 | W2 |
| Same or opp. has higher hit pct. | 2-3 | 26-192 | W1 |
| ISU hits .400 or higher | 3-0 | 19-0 | W19 |
| ISU hits .300 or higher | 6-0 | 125-2 | W52 |
| ISU hits lower than .300 | 9-3 | 220-64 | W1 |
| ISU hits lower than .200 | 3-1 | 42-158 | W3 |
| Opponent hits .300 or higher | 0-3 | 4-62 | L9 |
| Opponents hits .200 or higher | 4-0 | 85-126 | W4 |
| Opponent hits .200 or lower | 13-1 | 214-35 | W2 |
| Opponents hits .100 or lower | 1-0 | 94-1 | W12 |
| ISU leads in aces | 11-2 | 270-63 | W13 |
| Tied or opp. leads in aces | 7-2 | 127-160 | W2 |
| In August | 2-0 | 39-17 | W2 |
| In September | 9-2 | 151-68 | L1 |
| In October | 7-2 | 99-65 | W2 |
| In November | 0-0 | 87-57 | L4 |
| In December | 0-0 | 17-15 | L1 |
| In February | 0-0 | 1-1 | L1 |
| In March | 0-0 | 2-2 | W2 |
| On Sundays | 1-0 | 10-18 | W1 |
| On Mondays | 0-0 | 2-0 | W2 |
| On Tuesdays | 0-1 | 12-8 | L1 |
| On Wednesdays | 3-0 | 106-51 | W3 |
| On Thursdays | 4-0 | 17-7 | W4 |
| On Fridays | 6-1 | 93-47 | W1 |
| On Saturdays | 4-2 | 159-89 | L1 |
| Wearing cardinal | 4-1 | 154-109 | W3 |
| Wearing white | 3-1 | 195-81 | W1 |
| Wearing grey | 6-1 | 12-7 | W3 |
| Wearing pink | 0-0 | 11-3 | W3 |
| Wearing digital camo | 0-0 | 4-2 | W2 |
| Wearing gold | 0-0 | 3-2 | W3 |
| Wearing black | 5-1 | 17-19 | L1 |

SEASON SET BESTS

Individuals

| | |
|-----------------|---|
| Kills | 8, Three Times (MR: Goolsby in 2nd at Illinois (9-20-25)) |
| Attempts | 19, Goolsby in 1st at Utah (9-25-25) |
| Digs | 12, Van Gorp in 1st vs. Baylor (10-29-25) |
| Aces | 5, Jackson in 2nd vs. UCF (10-4-25) |
| Blocks | 4, Hanfelt in 4th at K-State (10-8-25) |

Team

| | |
|---------------------|---|
| Kills | 20 in 4th vs. Omaha (9-14-25) |
| Hitting Pct. | .636 in 2nd at Milwaukee (9-5-25) |
| Digs | 29, Twice (MR: in 2nd vs. Arizona (10-23-25)) |
| Aces | 5, Three Times (MR: in 2nd vs. UCF (10-4-25)) |
| Blocks | 5.0 in 2nd vs. Baylor (10-29-25) |

THE LAST TIME

Iowa State had...

| | |
|-----------------------------|--|
| 75-plus kills | 79 vs. Cincinnati (11-27-23) |
| 75-plus digs | 80 at K-State (10-8-25) |
| 20-plus blocks | 20.0 vs. Middle Tennessee (8-26-07) |
| 10-plus aces | 10 vs. West Virginia (10-16-25) |
| .400 or better hit pct | .457 at Milwaukee (9-5-25) |
| .300 or better hit pct | .309 vs. Arizona (10-23-25) |
| Held opp. to 15 pts. in set | 15 in 2nd vs. UCF (10-4-25) |
| 15 pts or less in a set | 14 in 1st vs. West Virginia (10-16-25) |

A Cyclone had...

| | |
|------------------------|---|
| 30-plus kills | 31, Nayeli Gonzalez vs. Kansas (11-10-23) |
| 20-plus kills | 24, Alea Goolsby at Utah (9-25-25) |
| 60-plus attempts | 61, Maya Duckworth at K-State (10-5-24) |
| 70-plus assists | 72, Kaylee Manns at Colorado (10-18-08) |
| 60-plus assists | 61, Morgan Brandt vs. Arizona State (10-31-25) |
| 30-plus digs | 30, Rachel Van Gorp at K-State (10-8-25) |
| 25-29 digs | 25, Rachel Van Gorp vs. Baylor (10-29-25) |
| 10-plus blocks | 10, Pam McCune at K-State (10-5-24) |
| 5-plus aces | 5, Tierney Jackson vs. UCF (10-4-25) |
| 30-plus points | 36.0, Nayeli Gonzalez vs. Kansas (11-10-23) |
| 20-plus points | 21.5, Alea Goolsby at Colorado (10-25-25) |
| a triple-double | Erin Boeve (14k-10d-10b) at Missouri (11-14-07) |
| a 20-kill/20-dig match | Jess Schaben (22k-22d) at UNI (9-13-16) |

An Opponent had...

| | |
|------------------|--|
| 30-plus kills | 32, Aliyah Carter, K-State (10-27-24) |
| 20-plus kills | 20, Rhian Swanson, Kansas (10-10-25) |
| 60-plus attempts | 72, Shaylee Myers, K-State (10-8-25) |
| 70-plus assists | 72, Carolyn Kittell, Oklahoma (9-27-00) |
| 60-plus assists | 62, Saige Ka'aha'aina-Torres, Texas (10-19-22) |
| 25-plus digs | 25, Symone Sims, K-State (10-8-25) |
| 10-plus blocks | 11, Brenna Schmidt, K-State (10-5-24) |
| 5-plus aces | 6, Alyssa Worden, Iowa (9-11-24) |
| 30-plus points | 36.0, Aliyah Carter, K-State (10-27-24) |
| 20-plus points | 21.5, Noemie Glover, Arizona State (10-31-25) |



CAREER DOUBLE FIGURES

NCAA STAT RANKINGS

| Kills | 2021 | 2022 | 2023 | 2024 | 2025 | Total | Streak |
|-----------------------------|------|------|------|------|------|-------|--------|
| Maya Duckworth | - | 20 | 17 | 12 | 9 | 58 | 1 |
| Nayeli Ti'a | - | - | 12# | 13# | 7 | 32 | 1 |
| Lilly Wachholz | - | - | 9 | 16 | 4 | 29 | 0 |
| Abbi Brenizer | - | - | 2* | 24* | 0 | 26 | 0 |
| Nayeli Gonzalez | - | - | 18 | 7 | 0 | 25 | 0 |
| Tierney Jackson | - | 3^ | 6^ | 2 | 6 | 17 | 1 |
| Amiree Hendricks-Walker 4\$ | - | 1\$ | - | 7 | 2 | 14 | 0 |
| Alea Goolsby | - | - | - | - | 13 | 13 | 0 |
| Faith DeRonde | - | 0 | 0 | 10 | 1 | 11 | 0 |
| Pam McCune | - | - | 0 | 2 | 4 | 6 | 0 |
| Reagan Hanfelt | - | - | - | - | 2 | 2 | 1 |
| Rachel Van Gorp | - | - | - | 3 | 0 | 3 | 0 |

| Digs | 2021 | 2022 | 2023 | 2024 | 2025 | Total | Streak |
|-----------------|------|------|------|------|------|-------|--------|
| Rachel Van Gorp | - | - | - | 20 | 22 | 42 | 27 |
| Morgan Brandt | - | 2 | 14 | 10 | 3 | 29 | 0 |
| Nayeli Ti'a | - | - | 10# | 9# | 6 | 25 | 1 |
| Maya Duckworth | - | 8 | 10 | 1 | 0 | 19 | 0 |
| Nayeli Gonzalez | - | - | 9 | 1 | 0 | 10 | 0 |
| Paula Krzeslak | - | - | 5 | 3 | 2 | 10 | 0 |
| Alea Goolsby | - | - | - | - | 4 | 4 | 0 |
| Ava Martin | - | - | - | 0 | 1 | 1 | 0 |
| Annalise Grant | - | - | - | - | 1 | 1 | 1 |

| Double-Doubles | 2021 | 2022 | 2023 | 2024 | 2025 | Total | Streak |
|-----------------|------|------|------|------|------|-------|--------|
| Morgan Brandt | - | 2 | 14 | 9 | 3 | 29 | 0 |
| Nayeli Ti'a | - | - | 7# | 8# | 3 | 18 | 1 |
| Maya Duckworth | - | 7 | 6 | 1 | 0 | 14 | 0 |
| Nayeli Gonzalez | - | - | 7 | 1 | 0 | 8 | 0 |
| Alea Goolsby | - | - | - | - | 4 | 4 | 0 |
| Rachel Van Gorp | - | - | - | 3 | 0 | 3 | 0 |
| Ava Martin | - | - | - | 0 | 1 | 1 | 0 |

| Team | Category | Stat | NCAA |
|------|------------------|-------|-------|
| Team | Kills | 14.29 | 9th |
| | Assists | 13.14 | 13th |
| | Hitting Pct. | 0.256 | 45th |
| | Opp Hitting Pct. | 0.196 | 112th |

| Individuals | Category | Stat | NCAA |
|-------------|-----------------|--------------|------------|
| Individuals | Rachel Van Gorp | Digs | 4.63 35th |
| | Morgan Brandt | Assists | 9.94 42nd |
| Individuals | Total Assists | 825 | 49th |
| | Tierney Jackson | Hitting Pct. | 0.367 62nd |

STAT RANKINGS

| Overall Matches | Team | Stat | Rank |
|-----------------|--------------|-------|------|
| Overall Matches | Kills | 14.29 | 1st |
| | Assists | 13.14 | 1st |
| | Digs | 14.41 | 5th |
| | Hitting Pct. | 0.256 | 6th |

| Category | Individual | Stat | Rank |
|--------------|------------|-------|------|
| Digs | Van Gorp | 4.63 | 2nd |
| Hitting Pct. | Jackson | 0.367 | 2nd |
| Assists | Brandt | 9.94 | 3rd |
| Hitting Pct. | McCune | 0.348 | 8th |

CAREER BENCHMARK PERFORMANCES

| 30-plus Kills | 2021 | 2022 | 2023 | 2024 | 2025 | Total | Streak |
|-----------------|------|------|------|------|------|-------|--------|
| Nayeli Gonzalez | - | - | 1 | 0 | 0 | 1 | 0 |

| 20-plus Kills | 2021 | 2022 | 2023 | 2024 | 2025 | Total | Streak |
|-----------------|------|------|------|------|------|-------|--------|
| Nayeli Gonzalez | - | - | 4 | 0 | 0 | 4 | 0 |
| Maya Duckworth | - | 0 | 1 | 2 | 0 | 3 | 0 |
| Alea Goolsby | - | - | - | - | 2 | 2 | 0 |
| Nayeli Ti'a | - | - | 1# | 1# | 0 | 2 | 0 |
| Lilly Wachholz | - | - | 0 | 1 | 0 | 1 | 0 |

| 30-plus Digs | 2021 | 2022 | 2023 | 2024 | 2025 | Total | Streak |
|-----------------|------|------|------|------|------|-------|--------|
| Rachel Van Gorp | - | - | - | 0 | 1 | 1 | 0 |

| 20-plus Digs | 2021 | 2022 | 2023 | 2024 | 2025 | Total | Streak |
|-----------------|------|------|------|------|------|-------|--------|
| Rachel Van Gorp | - | - | - | 2 | 6 | 8 | 0 |
| Paula Krzeslak | 0 | 0 | 1 | 0 | 0 | 1 | 0 |

| 10-plus Blocks | 2021 | 2022 | 2023 | 2024 | 2025 | Total | Streak |
|----------------|------|------|------|------|------|-------|--------|
| Pam McCune | - | - | 0 | 2 | 0 | 2 | 0 |

TEAM LEADERS

| Kills | Times | W-L |
|-------------------------|-------|------|
| Alea Goolsby | 13 | 11-2 |
| Maya Duckworth | 4 | 3-1 |
| Reagan Hanfelt | 2 | 2-0 |
| Lilly Wachholz | 2 | 1-1 |
| Nayeli Ti'a | 2 | 1-1 |
| Pam McCune | 1 | 1-0 |
| Amiree Hendricks-Walker | 1 | 1-0 |
| Tierney Jackson | 1 | 1-0 |

| Blocks | Times | W-L |
|-------------------------|-------|-----|
| Pam McCune | 10 | 8-2 |
| Tierney Jackson | 7 | 6-1 |
| Reagan Hanfelt | 4 | 3-1 |
| Amiree Hendricks-Walker | 3 | 2-1 |
| Maya Duckworth | 2 | 1-1 |
| Lilly Wachholz | 1 | 1-0 |
| Nayeli Ti'a | 1 | 0-1 |
| Abbi Brenizer | 1 | 1-0 |

| Digs | Times | W-L |
|-----------------|-------|------|
| Rachel Van Gorp | 22 | 18-4 |
| Nayeli Ti'a | 1 | 1-0 |

^ Jackson's 2022-23 stats came at West Virginia
\$ Hendricks-Walker's 2021-23 stats came at South Florida
* Brenizer's 2023-24 stats came at DMACC
Ti'a's 2023-24 stats came at San Jose State



1

PAM McCUNE

Junior, Middle Blocker, 6-0
Upper Marlboro, Maryland (St. John's)



| SEASON HIGHS | |
|--|--|
| Kills: 11, Twice | |
| Attempts: 27, Twice | |
| Hitting Pct.: .750 at UNI, 9/9/25 | |
| Aces: 1 at Utah, 9/25/25 | |
| Digs: 3, Twice | |
| Solo Blocks: 2, Three Times | |
| Block Asst.: 7 at Utah, 9/25/25 | |
| Total Blocks: 7 at Utah, 9/25/25 | |

| CAREER HIGHS | |
|---|--|
| Kills: 13 at South Dakota, 9/15/24 | |
| Attempts: 27, Twice | |
| Hitting Pct.: .750 at UNI, 9/9/25 | |
| Aces: 1, Six Times | |
| Digs: 5 vs. West Virginia, 9/28/24 | |
| Solo Blocks: 5 vs. Utah, 11/29/24 | |
| Block Asst.: 8, Three Times | |
| Total Blocks: 10, Twice | |

CAREER STATISTICS

| SEASON | TEAM | SM-MP | K | K/S | E | TA | PCT | A | A/S | SA | SA/S | SE | DIG | D/S | RE | BS | BA | TB | B/S | BE | BHE | PTS | PTS/S |
|---------|--------|----------|-----|------|----|-----|------|---|------|----|------|----|-----|------|----|----|-----|-----|------|----|-----|-------|-------|
| 2023-24 | IowaSt | 59-21 | 87 | 1.47 | 19 | 211 | .322 | 5 | 0.08 | 3 | 0.05 | 3 | 25 | 0.42 | 1 | 8 | 44 | 52 | 0.88 | 8 | 0 | 120.0 | 2.03 |
| 2024-25 | IowaSt | 82-22 | 134 | 1.63 | 33 | 335 | .301 | 2 | 0.02 | 2 | 0.02 | 6 | 25 | 0.30 | 0 | 23 | 62 | 85 | 1.04 | 1 | 0 | 190.0 | 2.32 |
| 2025-26 | IowaSt | 65-17 | 121 | 1.86 | 28 | 267 | .348 | 2 | 0.03 | 1 | 0.02 | 2 | 10 | 0.15 | 0 | 8 | 38 | 46 | 0.71 | 6 | 1 | 149.0 | 2.29 |
| TOTAL | | 206 - 60 | 342 | 1.66 | 80 | 813 | .322 | 9 | 0.04 | 6 | 0.03 | 11 | 60 | 0.29 | 1 | 39 | 144 | 183 | 0.89 | 15 | 1 | 459.0 | 2.23 |

NOTES ON PAM

- Hit an errorless 11 kills on 15 swings (.733 hitting) at Ohio. The hitting pct. ties the sixth-highest efficiency in program history (minimum 15 attempts to enter the list), and is the best since 2018.
- Had nine kills on 12 attempts without an error for a hitting percentage of .750 at UNI.

2

MORGAN BRANDT

Senior, Setter, 6-0
Sumner, Iowa (Sumner-Fredericksburg)



| SEASON HIGHS | |
|--|--|
| Assists: 61 vs. Arizona State, 10/31/25 | |
| Aces: 3 at Milwaukee, 9/5/25 | |
| Digs: 14 vs. Omaha, 9/14/25 | |
| Kills: 8 at K-State, 10/8/25 | |
| Hitting Pct.: .667 at K-State, 10/8/25 | |
| Solo Blocks: - | |
| Block Assists: 2, Six Times | |

| CAREER HIGHS | |
|--|--|
| Assists: 65 vs. Cincinnati, 11/27/23 | |
| Aces: 4 vs. UCSB, 9/14/23 | |
| Digs: 15, Twice | |
| Kills: 8 at K-State, 10/8/25 | |
| Hitting Pct.: .667 at K-State, 10/8/25 | |
| Solo Blocks: 1, Twice | |
| Block Assists: 5 vs. Creighton, 9/10/23 | |

CAREER STATISTICS

| SEASON | TEAM | SM-MP | K | K/S | E | TA | PCT | A | A/S | SA | SA/S | SE | DIG | D/S | RE | BS | BA | TB | B/S | BE | BHE | PTS | PTS/S |
|---------|--------|-----------|-----|------|----|-----|------|------|-------|----|------|-----|-----|------|----|----|-----|-----|------|----|-----|-------|-------|
| 2022-23 | IowaSt | 100-27 | 13 | 0.13 | 7 | 41 | .146 | 579 | 5.79 | 23 | 0.23 | 31 | 155 | 1.55 | 0 | 0 | 1 | 1 | 0.01 | 1 | 11 | 36.5 | 0.37 |
| 2023-24 | IowaSt | 111-30 | 92 | 0.83 | 26 | 262 | .252 | 1132 | 10.20 | 28 | 0.25 | 55 | 247 | 2.23 | 0 | 1 | 48 | 49 | 0.44 | 7 | 11 | 145.0 | 1.31 |
| 2024-25 | IowaSt | 115-28 | 68 | 0.59 | 18 | 164 | .305 | 978 | 8.50 | 22 | 0.19 | 36 | 237 | 2.06 | 0 | 1 | 30 | 31 | 0.27 | 2 | 4 | 106.0 | 0.92 |
| 2025-26 | IowaSt | 83-22 | 53 | 0.64 | 15 | 141 | .270 | 825 | 9.94 | 16 | 0.19 | 38 | 158 | 1.90 | 0 | 0 | 21 | 21 | 0.25 | 2 | 0 | 79.5 | 0.96 |
| TOTAL | | 409 - 107 | 226 | 0.55 | 66 | 608 | .263 | 3514 | 8.59 | 89 | 0.22 | 160 | 797 | 1.95 | 0 | 2 | 100 | 102 | 0.25 | 12 | 26 | 367.0 | 0.90 |

Double-Doubles

| | Assists | Digs |
|-------------------|---------|------|
| at Ohio | 32 | 11 |
| vs. Omaha | 48 | 14 |
| vs. West Virginia | 49 | 11 |

NOTES ON MORGAN

- Ranks fourth in Iowa State history with 3,514 career assists.



3

TIERNEY JACKSON

Senior, Middle Blocker, 6-4
Tulsa, Oklahoma (West Virginia)

SEASON HIGHS

Kills: 15 vs. Arizona State, 10/31/25
Attempts: 27 vs. Arizona State, 10/31/25
Hitting Pct.: .750 at Colorado, 10/25/25
Aces: 5 vs UCF, 10/4/25
Digs: 6, Twice
Solo Blocks: 1, Seven Times
Block Asst.: 6 vs. Bucknell, 8/29/25

CAREER HIGHS

Kills: 15, Twice
Attempts: 39 vs. TCU, 10/14/23
Hitting Pct.: .750 at Colorado, 10/25/25
Aces: 5 vs UCF, 10/4/25
Digs: 7, Twice
Solo Blocks: 4 vs. Texas Tech, 9/24/22
Block Asst.: 8 at Cornell, 9/8/23

CAREER STATISTICS

| SEASON | TEAM | SM-MP | K | K/S | E | TA | PCT | A | A/S | SA | SA/S | SE | DIG | D/S | RE | BS | BA | TB | B/S | BE | BHE | PTS | PTS/S |
|-------------------------|--------|------------------|------------|-------------|------------|-------------|-------------|-----------|-------------|-----------|-------------|-----------|------------|-------------|----------|-----------|------------|------------|-------------|-----------|----------|--------------|-------------|
| 2022-23 | WVU | 105-29 | 165 | 1.57 | 89 | 467 | .163 | 8 | 0.08 | 2 | 0.02 | 5 | 30 | 0.29 | 1 | 20 | 71 | 91 | 0.87 | 8 | 1 | 222.5 | 2.12 |
| 2023-24 | WVU | 103-30 | 199 | 1.93 | 84 | 505 | .228 | 3 | 0.03 | 14 | 0.14 | 27 | 62 | 0.60 | 1 | 7 | 76 | 83 | 0.81 | 14 | 0 | 258.0 | 2.50 |
| 2024-25 | IowaSt | 73-25 | 98 | 1.34 | 33 | 247 | .263 | 7 | 0.10 | 15 | 0.21 | 26 | 39 | 0.53 | 1 | 4 | 31 | 35 | 0.48 | 4 | 0 | 132.5 | 1.82 |
| 2025-26 | IowaSt | 72-21 | 161 | 2.24 | 44 | 319 | .367 | 6 | 0.08 | 13 | 0.18 | 20 | 42 | 0.58 | 0 | 7 | 42 | 49 | 0.68 | 8 | 0 | 202.0 | 2.81 |
| TOTAL FOR IowaSt | | 145 - 46 | 259 | 1.79 | 77 | 566 | .322 | 13 | 0.09 | 28 | 0.19 | 46 | 81 | 0.56 | 1 | 11 | 73 | 84 | 0.58 | 12 | 0 | 334.5 | 2.31 |
| TOTAL | | 353 - 105 | 623 | 1.76 | 250 | 1538 | .243 | 24 | 0.07 | 44 | 0.12 | 78 | 173 | 0.49 | 3 | 38 | 220 | 258 | 0.73 | 34 | 1 | 815.0 | 2.31 |

NOTES ON TIERNEY

- Tied the third-highest hitting percentage in Iowa State history with an errorless 12 kills on 16 swings for an efficiency of .750 (minimum 15 attempts to make list).

4

REAGAN HANFELT

Freshman, Middle Blocker/Right Side, 6-0
Ankeny, Iowa (Ankeny)

SEASON HIGHS

Kills: 14 at K-State, 10/8/25
Attempts: 23 at K-State, 10/8/25
Hitting Pct.: .700 vs. Texas Tech, 10/2/25
Aces: 4 vs. Arizona, 10/23/25
Digs: 5, Three Times
Solo Blocks: 3 vs UCF, 10/4/25
Block Asst.: 8 at K-State, 10/8/25

CAREER HIGHS

Kills: 14 at K-State, 10/8/25
Attempts: 23 at K-State, 10/8/25
Hitting Pct.: .700 vs. Texas Tech, 10/2/25
Aces: 4 vs. Arizona, 10/23/25
Digs: 5, Three Times
Solo Blocks: 3 vs UCF, 10/4/25
Block Asst.: 8 at K-State, 10/8/25

CAREER STATISTICS

| SEASON | TEAM | SM-MP | K | K/S | E | TA | PCT | A | A/S | SA | SA/S | SE | DIG | D/S | RE | BS | BA | TB | B/S | BE | BHE | PTS | PTS/S |
|--------------|--------|---------------|-----------|-------------|-----------|------------|-------------|----------|-------------|-----------|-------------|-----------|-----------|-------------|----------|----------|-----------|-----------|-------------|----------|----------|-------------|-------------|
| 2025-26 | IowaSt | 35-9 | 65 | 1.86 | 20 | 126 | .357 | 8 | 0.23 | 12 | 0.34 | 10 | 28 | 0.80 | 0 | 6 | 26 | 32 | 0.91 | 0 | 0 | 96.0 | 2.74 |
| TOTAL | | 35 - 9 | 65 | 1.86 | 20 | 126 | .357 | 8 | 0.23 | 12 | 0.34 | 10 | 28 | 0.80 | 0 | 6 | 26 | 32 | 0.91 | 0 | 0 | 96.0 | 2.74 |



5

MAYA DUCKWORTH

Senior, Outside Hitter, 5-8

Hurst, Texas (Birdville)



| SEASON HIGHS |
|---|
| Kills: 16 vs. Arizona State, 10/31/25 |
| Attempts: 44 vs. Arizona State, 10/31/25 |
| Hitting Pct.: .714 vs. South Alabama, 9/6/25 |
| Aces: 2, Twice |
| Digs: 9 at K-State, 10/8/25 |
| Solo Blocks: 1, Five Times |
| Block Asst.: 4, Twice |

| CAREER HIGHS |
|---|
| Kills: 23, Twice |
| Attempts: 61 at K-State, 10/5/24 |
| Hitting Pct.: .714 vs. South Alabama, 9/6/25 |
| Aces: 5, Twice |
| Digs: 17 vs. Cincinnati, 11/25/23 |
| Solo Blocks: 3 at GCU, 9/2/23 |
| Block Asst.: 7 at UNLV, 8/31/24 |

CAREER STATISTICS

| SEASON | TEAM | SM-MP | K | K/S | E | TA | PCT | A | A/S | SA | SA/S | SE | DIG | D/S | RE | BS | BA | TB | B/S | BE | BHE | PTS | PTS/S |
|---------|--------|-----------|------|------|-----|------|------|----|------|----|------|----|-----|------|----|----|-----|-----|------|----|-----|-------|-------|
| 2022-23 | IowaSt | 115-30 | 311 | 2.70 | 130 | 905 | .200 | 12 | 0.10 | 22 | 0.19 | 36 | 196 | 1.70 | 43 | 7 | 51 | 58 | 0.50 | 9 | 0 | 365.5 | 3.18 |
| 2023-24 | IowaSt | 103-28 | 316 | 3.07 | 129 | 908 | .206 | 18 | 0.17 | 23 | 0.22 | 28 | 207 | 2.01 | 10 | 11 | 35 | 46 | 0.45 | 10 | 0 | 367.5 | 3.57 |
| 2024-25 | IowaSt | 84-23 | 215 | 2.56 | 79 | 643 | .212 | 4 | 0.05 | 11 | 0.13 | 22 | 109 | 1.30 | 11 | 4 | 26 | 30 | 0.36 | 1 | 0 | 243.0 | 2.89 |
| 2025-26 | IowaSt | 78-22 | 181 | 2.32 | 57 | 485 | .256 | 5 | 0.06 | 10 | 0.13 | 6 | 81 | 1.04 | 4 | 5 | 30 | 35 | 0.45 | 5 | 0 | 211.0 | 2.71 |
| TOTAL | | 380 - 103 | 1023 | 2.69 | 395 | 2941 | .214 | 39 | 0.10 | 66 | 0.17 | 92 | 593 | 1.56 | 68 | 27 | 142 | 169 | 0.44 | 25 | 0 | 1187 | 3.12 |

- NOTES ON MAYA
- Ranks at No. 12 in Iowa State history with 1,023 kills.
 - 2022 AVCA All-Midwest Region First Team, AVCA Midwest Region Freshman of the Year and All-Big 12 Second Team ... 3x Big 12 Rookie of the Week.

6

SHAE PEARSON

Sophomore, Middle Blocker, 6-2

Saint Charles, Mo. (Francis Howell Central)



| SEASON HIGHS |
|------------------------|
| Kills: - |
| Attempts: - |
| Hitting Pct.: - |
| Aces: - |
| Digs: - |
| Solo Blocks: - |
| Block Asst.: - |

| CAREER HIGHS |
|---------------------------|
| Kills: None |
| Attempts: None |
| Hitting Pct.: None |
| Aces: None |
| Digs: None |
| Solo Blocks: None |
| Block Asst.: None |

| CAREER STATISTICS |
|-------------------|
|-------------------|

7

ANNALISE GRANT

Freshman, Libero/Defensive Specialist, 5-4
West Des Moines, Iowa (Dowling Catholic)



SEASON HIGHS

Digs: 10 vs. Arizona State, 10/31/25

Aces: 1 at Illinois, 9/20/25

Assists: 2, Twice

CAREER HIGHS

Digs: 10 vs. Arizona State, 10/31/25

Aces: 1 at Illinois, 9/20/25

Assists: 2, Twice

CAREER STATISTICS

| SEASON | TEAM | SM-MP | K | K/S | E | TA | PCT | A | A/S | SA | SA/S | SE | DIG | D/S | RE | BS | BA | TB | B/S | BE | BHE | PTS | PTS/S |
|---------|--------|---------|---|------|---|----|------|---|------|----|------|----|-----|------|----|----|----|----|------|----|-----|-----|-------|
| 2025-26 | IowaSt | 42-14 | 0 | 0.00 | 0 | 1 | .000 | 6 | 0.14 | 1 | 0.02 | 6 | 33 | 0.79 | 5 | 0 | 0 | 0 | 0.00 | 0 | 0 | 1.0 | 0.02 |
| TOTAL | | 42 - 14 | 0 | 0.00 | 0 | 1 | .000 | 6 | 0.14 | 1 | 0.02 | 6 | 33 | 0.79 | 5 | 0 | 0 | 0 | 0.00 | 0 | 0 | 1.0 | 0.02 |

9

MESAIYA BETTIS

Freshman, Outside Hitter, 6-0
Apple Valley, Minn. (Burnsville)



SEASON HIGHS

Kills: -

Attempts: -

Hitting Pct.: -

Aces: -

Digs: -

Solo Blocks: -

Block Asst.: -

CAREER HIGHS

Kills: None

Attempts: None

Hitting Pct.: None

Aces: None

Digs: None

Solo Blocks: None

Block Asst.: None

CAREER STATISTICS

10

RACHEL VAN GORP

Sophomore, Libero/Outside Hitter, 5-9
Olathe, Kansas (Heritage Christian Academy)



>

SEASON HIGHS

Digs: 30 at K-State, 10/8/25
Assists: 8 at Illinois, 9/20/25
Aces: 4 at Iowa, 9/17/25

>

CAREER HIGHS

Digs: 30 at K-State, 10/8/25
Assists: 8 at Illinois, 9/20/25
Aces: 5, Twice
Kills: 11 vs. BYU, 10/16/24
Attempts: 29 vs. BYU, 10/16/24
Hitting Pct.: .389 at Baylor, 10/30/24
Solo Blocks: 1 at Texas Tech, 11/16/24
Block Asst.: 1, Twice

>

CAREER STATISTICS

| SEASON | TEAM | SM-MP | K | K/S | E | TA | PCT | A | A/S | SA | SA/S | SE | DIG | D/S | RE | BS | BA | TB | B/S | BE | BHE | PTS | PTS/S |
|---------|--------|----------|----|------|----|-----|------|-----|------|----|------|----|-----|------|----|----|----|----|------|----|-----|-------|-------|
| 2024-25 | IowaSt | 102-25 | 92 | 0.90 | 44 | 287 | .167 | 39 | 0.38 | 23 | 0.23 | 31 | 323 | 3.17 | 21 | 1 | 2 | 3 | 0.03 | 2 | 1 | 117.0 | 1.15 |
| 2025-26 | IowaSt | 83-22 | 1 | 0.01 | 0 | 9 | .111 | 81 | 0.98 | 25 | 0.30 | 19 | 384 | 4.63 | 6 | 0 | 0 | 0 | 0.00 | 0 | 2 | 26.0 | 0.31 |
| TOTAL | | 185 - 47 | 93 | 0.50 | 44 | 296 | .166 | 120 | 0.65 | 48 | 0.26 | 50 | 707 | 3.82 | 27 | 1 | 2 | 3 | 0.02 | 2 | 3 | 143.0 | 0.77 |

NOTES ON RACHEL

- Big 12 Defensive Player of the Week (Nov. 4 & Oct. 14, 2025) ... 2024 Big 12 All-Rookie Team member ... Big 12 Rookie of the Week (Oct. 29, 2024).
- Mother, the late Janice Ninemire who also wore No. 10, played volleyball at Iowa State from 1987-90 and was an All-Big Eight First Team selection ... Ninemire still ranks sixth in all-time ISU history in career aces (122), 14th in matches played (120), 18th in digs (1,001) and 25th in kills (833).
- Also an outstanding track and field athlete in high school ... earned three straight long jump Class 3A state titles (2022-24) and the '23 triple jump title, while notching six other top-five state finishes throughout the 100m, 200m and 400m dash.

12

ABBI BRENIZER

Junior, Middle Blocker/Right Side, 6-0
Norwalk, Iowa (Norwalk)



>

SEASON HIGHS

Kills: 1 at Kansas, 10/10/25
Attempts: 1 at Kansas, 10/10/25
Hitting Pct.: -
Aces: -
Digs: 1 vs. Arizona, 10/23/25
Solo Blocks: -
Block Asst.: 2 vs. Arizona, 10/23/25

>

CAREER HIGHS

Kills: 19 vs. Lincoln Land, 10/11/24
Attempts: 52 at Kirkwood, 11/9/24
Hitting Pct.: .750 vs Hawkeye, 10/15/24
Aces: 4 vs. Spoon River, 10/12/24
Digs: 9, Twice
Solo Blocks: 2, Five Times
Block Asst.: 8 vs. Heartland, 9/7/24

>

CAREER STATISTICS

| SEASON | TEAM | SM-MP | K | K/S | E | TA | PCT | A | A/S | SA | SA/S | SE | DIG | D/S | RE | BS | BA | TB | B/S | BE | BHE | PTS | PTS/S |
|---------|--------|-------|---|------|---|----|-------|---|------|----|------|----|-----|------|----|----|----|----|------|----|-----|-----|-------|
| 2025-26 | IowaSt | 2-2 | 1 | 0.50 | 0 | 1 | 1.000 | 0 | 0.00 | 0 | 0.00 | 0 | 1 | 0.50 | 0 | 0 | 2 | 2 | 1.00 | 0 | 0 | 2.0 | 1.00 |
| TOTAL | | 2 - 2 | 1 | 0.50 | 0 | 1 | 1.000 | 0 | 0.00 | 0 | 0.00 | 0 | 1 | 0.50 | 0 | 0 | 2 | 2 | 1.00 | 0 | 0 | 2.0 | 1.00 |

13

LILLY WACHHOLZ

R-Junior, Right Side, 6-2
Waconia, Minnesota (Mayer Lutheran)



| SEASON HIGHS |
|---|
| Kills: 14 at Iowa, 9/17/25 |
| Attempts: 34 at Iowa, 9/17/25 |
| Hitting Pct.: .538 vs. CMU, 9/5/25 |
| Aces: 3 vs. Bucknell, 8/29/25 |
| Digs: 6 vs. Omaha, 9/14/25 |
| Solo Blocks: 1, Twice |
| Block Asst.: 1, Five Times |

| CAREER HIGHS |
|--|
| Kills: 21 at Syracuse, 9/21/24 |
| Attempts: 44 vs. West Virginia, 9/28/24 |
| Hitting Pct.: .650 vs. Ohio, 9/15/23 |
| Aces: 3, Four Times |
| Digs: 8, Twice |
| Solo Blocks: 1, Ten Times |
| Block Asst.: 6 vs. Baylor, 9/30/23 |

CAREER STATISTICS

| SEASON | TEAM | SM-MP | K | K/S | E | TA | PCT | A | A/S | SA | SA/S | SE | DIG | D/S | RE | BS | BA | TB | B/S | BE | BHE | PTS | PTS/S |
|---------|--------|----------|-----|------|-----|------|------|----|------|----|------|----|-----|------|----|----|----|----|------|----|-----|-------|-------|
| 2023-24 | IowaSt | 94-29 | 197 | 2.10 | 78 | 515 | .231 | 8 | 0.09 | 20 | 0.21 | 29 | 62 | 0.66 | 2 | 3 | 39 | 42 | 0.45 | 7 | 0 | 239.5 | 2.55 |
| 2024-25 | IowaSt | 107-28 | 287 | 2.68 | 135 | 705 | .216 | 9 | 0.08 | 22 | 0.21 | 30 | 83 | 0.78 | 1 | 5 | 31 | 36 | 0.34 | 5 | 1 | 329.5 | 3.08 |
| 2025-26 | IowaSt | 38-13 | 90 | 2.37 | 45 | 224 | .201 | 3 | 0.08 | 6 | 0.16 | 10 | 25 | 0.66 | 0 | 2 | 5 | 7 | 0.18 | 3 | 0 | 100.5 | 2.64 |
| TOTAL | | 239 - 70 | 574 | 2.40 | 258 | 1444 | .219 | 20 | 0.08 | 48 | 0.20 | 69 | 170 | 0.71 | 3 | 10 | 75 | 85 | 0.36 | 15 | 1 | 669.5 | 2.80 |

14

NAYELI GONZALEZ

Junior, Outside Hitter, 6-2
San Antonio, Texas (Cornerstone Christian)



| SEASON HIGHS |
|------------------------|
| Kills: - |
| Attempts: - |
| Hitting Pct.: - |
| Aces: - |
| Digs: - |
| Solo Blocks: - |
| Block Asst.: - |

| CAREER HIGHS |
|---|
| Kills: 31 vs. Kansas, 11/10/23 |
| Attempts: 61 vs. Kansas, 11/10/23 |
| Hitting Pct.: .483 vs. Iowa, 9/11/24 |
| Aces: 4 vs. Kansas, 11/11/23 |
| Digs: 19 at Houston, 11/17/23 |
| Solo Blocks: 2, Three Times |
| Block Asst.: 6 at K-State, 10/5/24 |

CAREER STATISTICS

| SEASON | TEAM | SM-MP | K | K/S | E | TA | PCT | A | A/S | SA | SA/S | SE | DIG | D/S | RE | BS | BA | TB | B/S | BE | BHE | PTS | PTS/S |
|---------|--------|----------|-----|------|-----|------|------|----|------|----|------|----|-----|------|----|----|----|----|------|----|-----|-------|-------|
| 2023-24 | IowaSt | 105-30 | 348 | 3.31 | 156 | 855 | .225 | 23 | 0.22 | 33 | 0.31 | 52 | 224 | 2.13 | 29 | 10 | 37 | 47 | 0.45 | 10 | 1 | 409.5 | 3.90 |
| 2024-25 | IowaSt | 43-11 | 127 | 2.95 | 63 | 317 | .202 | 2 | 0.05 | 7 | 0.16 | 13 | 48 | 1.12 | 6 | 2 | 16 | 18 | 0.42 | 1 | 0 | 144.0 | 3.35 |
| TOTAL | | 148 - 41 | 475 | 3.21 | 219 | 1172 | .218 | 25 | 0.17 | 40 | 0.27 | 65 | 272 | 1.84 | 35 | 12 | 53 | 65 | 0.44 | 11 | 1 | 553.5 | 3.74 |

2024 Double-Doubles

| | Kills | Digs |
|-------------|-------|------|
| vs. Pacific | 19 | 14 |

NOTES ON NAYELI

■ 2023 AVCA & VolleyballMag.com Honorable Mention All-American, First Team All-Big 12, Big 12 Rookie of the Year, AVCA First Team All-Region and Midwest Region Freshman of the Year ... 4x Big 12 Rookie of the Week.



17

AVA MARTIN

Sophomore, Setter, 5-10
Leawood, Kansas (San Jose State)



| SEASON HIGHS |
|---|
| Assists: 26 at Utah, 9/25/25 |
| Aces: 2, Three Times |
| Digs: 10 vs. Texas Tech, 10/2/25 |
| Kills: - |
| Hitting Pct.: - |
| Solo Blocks: - |
| Block Assists: - |

| CAREER HIGHS |
|--|
| Assists: 27 vs. New Mexico, 11/2/24 |
| Aces: 3 vs. New Mexico, 11/2/24 |
| Digs: 10 vs. Texas Tech, 10/2/25 |
| Kills: 1 vs. New Mexico, 11/2/24 |
| Hitting Pct.: None |
| Solo Blocks: None |
| Block Asst.: None |

CAREER STATISTICS

| SEASON | TEAM | SM-MP | K | K/S | E | TA | PCT | A | A/S | SA | SA/S | SE | DIG | D/S | RE | BS | BA | TB | B/S | BE | BHE | PTS | PTS/S |
|------------------|--------|---------|---|------|---|----|-------|-----|------|----|------|----|-----|------|----|----|----|----|------|----|-----|------|-------|
| 2024-25 | SJSU | 24-11 | 1 | 0.04 | 0 | 6 | .167 | 108 | 4.50 | 8 | 0.33 | 10 | 36 | 1.50 | 0 | 0 | 0 | 0 | 0.00 | 0 | 0 | 9.0 | 0.38 |
| 2025-26 | IowaSt | 50-17 | 0 | 0.00 | 1 | 4 | -.250 | 128 | 2.56 | 10 | 0.20 | 17 | 55 | 1.10 | 0 | 0 | 0 | 0 | 0.00 | 2 | 0 | 10.0 | 0.20 |
| TOTAL FOR IowaSt | | 50 - 17 | 0 | 0.00 | 1 | 4 | -.250 | 128 | 2.56 | 10 | 0.20 | 17 | 55 | 1.10 | 0 | 0 | 0 | 0 | 0.00 | 2 | 0 | 10.0 | 0.20 |
| TOTAL | | 74 - 28 | 1 | 0.01 | 1 | 10 | .000 | 236 | 3.19 | 18 | 0.24 | 27 | 91 | 1.23 | 0 | 0 | 0 | 0 | 0.00 | 2 | 0 | 19.0 | 0.26 |

| Double-Doubles | Assists | Digs |
|----------------|---------|------|
| vs. Texas Tech | 11 | 10 |

18

AMIREE HENDRICKS-WALKER

R-Junior, Middle Blocker, 6-2
Los Angeles, California (South Florida)



| SEASON HIGHS |
|---|
| Kills: 15 at Iowa, 9/17/25 |
| Attempts: 24 at Iowa, 9/17/25 |
| Hitting Pct.: .643 vs. Eastern Illinois, 9/19/25 |
| Digs: 1, Four Times |
| Solo Blocks: 1 at Iowa, 9/17/25 |
| Block Asst.: 5, Four Times |

| CAREER HIGHS |
|--|
| Kills: 18 vs. West Virginia, 9/28/24 |
| Attempts: 31 vs. UMBC, 8/28/21 |
| Hitting Pct.: .714 vs. Stetson, 9/16/22 |
| Digs: 5 vs. K-State, 10/27/24 |
| Solo Blocks: 5 vs. Furman, 9/10/21 |
| Block Asst.: 8 at Memphis, 9/25/22 |

CAREER STATISTICS

| SEASON | TEAM | SM-MP | K | K/S | E | TA | PCT | A | A/S | SA | SA/S | SE | DIG | D/S | RE | BS | BA | TB | B/S | BE | BHE | PTS | PTS/S |
|------------------|--------|----------|-----|------|-----|------|------|---|------|----|------|----|-----|------|----|----|-----|-----|------|----|-----|-------|-------|
| 2021-22 | USF | 114-31 | 172 | 1.51 | 61 | 400 | .278 | 5 | 0.04 | 0 | 0.00 | 0 | 16 | 0.14 | 0 | 21 | 74 | 95 | 0.83 | 9 | 0 | 230.0 | 2.02 |
| 2022-23 | USF | 59-15 | 68 | 1.15 | 17 | 138 | .370 | 0 | 0.00 | 0 | 0.00 | 0 | 5 | 0.08 | 1 | 10 | 54 | 64 | 1.08 | 5 | 0 | 105.0 | 1.78 |
| 2024-25 | IowaSt | 94-24 | 181 | 1.93 | 53 | 388 | .330 | 4 | 0.04 | 0 | 0.00 | 3 | 15 | 0.16 | 0 | 7 | 66 | 73 | 0.78 | 3 | 0 | 221.0 | 2.35 |
| 2025-26 | IowaSt | 43-13 | 86 | 2.00 | 27 | 170 | .347 | 0 | 0.00 | 0 | 0.00 | 3 | 5 | 0.12 | 0 | 1 | 30 | 31 | 0.72 | 1 | 0 | 102.0 | 2.37 |
| TOTAL FOR IowaSt | | 137 - 37 | 267 | 1.95 | 80 | 558 | .335 | 4 | 0.03 | 0 | 0.00 | 6 | 20 | 0.15 | 0 | 8 | 96 | 104 | 0.76 | 4 | 0 | 323.0 | 2.36 |
| TOTAL | | 310 - 83 | 507 | 1.64 | 158 | 1096 | .318 | 9 | 0.03 | 0 | 0.00 | 6 | 41 | 0.13 | 1 | 39 | 224 | 263 | 0.85 | 18 | 0 | 658.0 | 2.12 |



19

FAITH DeRONDE

Junior, Outside Hitter/Right Side, 5-11
Oskaloosa, Iowa (Oskaloosa)

SEASON HIGHS

Kills: 12 at K-State, 10/8/25
Attempts: 29 at K-State, 10/8/25
Hitting Pct.: .345 at K-State, 10/8/25
Aces: 1 vs. Baylor, 10/29/25
Digs: 7 at Kansas, 10/10/25
Solo Blocks: -
Block Asst.: -

CAREER HIGHS

Kills: 17 at Houston, 10/9/24
Attempts: 55 vs. K-State, 10/27/24
Hitting Pct.: .375 at K-State, 10/5/24
Aces: 3 vs. Illinois, 9/7/24
Digs: 9 vs. Baylor, 11/25/23
Solo Blocks: None
Block Asst.: 3 vs. K-State, 10/27/24

CAREER STATISTICS

| SEASON | TEAM | SM-MP | K | K/S | E | TA | PCT | A | A/S | SA | SA/S | SE | DIG | D/S | RE | BS | BA | TB | B/S | BE | BHE | PTS | PTS/S |
|--------------|--------|-----------------|------------|-------------|------------|------------|-------------|-----------|-------------|----------|-------------|-----------|------------|-------------|-----------|----------|-----------|-----------|-------------|----------|----------|--------------|-------------|
| 2022-23 | IowaSt | 9-7 | 0 | 0.00 | 5 | 7 | -.714 | 2 | 0.22 | 1 | 0.11 | 4 | 5 | 0.56 | 0 | 0 | 0 | 0 | 0.00 | 0 | 0 | 1.0 | 0.11 |
| 2023-24 | IowaSt | 84-28 | 11 | 0.13 | 10 | 44 | .023 | 19 | 0.23 | 0 | 0.00 | 1 | 82 | 0.98 | 12 | 0 | 0 | 0 | 0.00 | 0 | 0 | 11.0 | 0.13 |
| 2024-25 | IowaSt | 112-28 | 205 | 1.83 | 92 | 586 | .193 | 5 | 0.04 | 7 | 0.06 | 36 | 112 | 1.00 | 21 | 0 | 13 | 13 | 0.12 | 3 | 0 | 218.5 | 1.95 |
| 2025-26 | IowaSt | 42-16 | 35 | 0.83 | 19 | 104 | .154 | 5 | 0.12 | 1 | 0.02 | 3 | 39 | 0.93 | 3 | 0 | 0 | 0 | 0.00 | 0 | 0 | 36.0 | 0.86 |
| TOTAL | | 247 - 79 | 251 | 1.02 | 126 | 741 | .169 | 31 | 0.13 | 9 | 0.04 | 44 | 238 | 0.96 | 36 | 0 | 13 | 13 | 0.05 | 3 | 0 | 266.5 | 1.08 |

20

NAYELI TI'A

R-Junior, Outside Hitter, 5-11
Livermore, Calif. (San Jose State)

SEASON HIGHS

Kills: 16 vs. Texas Tech, 10/2/25
Attempts: 51 at K-State, 10/8/25
Hitting Pct.: .438 at BYU, 9/27/25
Aces: 2, Twice
Digs: 17 vs. Texas Tech, 10/2/25
Solo Blocks: 1, Twice
Block Asst.: 3 at K-State, 10/8/25

CAREER HIGHS

Kills: 24 vs. CSUN, 8/25/23
Attempts: 53 vs. Cal Baptist, 9/8/24
Hitting Pct.: .438 at BYU, 9/27/25
Aces: 5, Twice
Digs: 18 at Campbell, 9/8/23
Solo Blocks: 3 at Fresno State, 9/24/24
Block Asst.: 5, Twice

CAREER STATISTICS

| SEASON | TEAM | SM-MP | K | K/S | E | TA | PCT | A | A/S | SA | SA/S | SE | DIG | D/S | RE | BS | BA | TB | B/S | BE | BHE | PTS | PTS/S |
|-------------------------|--------|-----------------|------------|-------------|------------|-------------|-------------|-----------|-------------|-----------|-------------|-----------|------------|-------------|------------|-----------|-----------|------------|-------------|-----------|----------|--------------|-------------|
| 2023-24 | SJSU | 110-30 | 287 | 2.61 | 199 | 819 | .107 | 22 | 0.20 | 32 | 0.29 | 33 | 238 | 2.16 | 48 | 7 | 50 | 57 | 0.52 | 3 | 1 | 351.0 | 3.19 |
| 2024-25 | SJSU | 66-17 | 228 | 3.45 | 128 | 619 | .162 | 13 | 0.20 | 26 | 0.39 | 16 | 167 | 2.53 | 25 | 10 | 29 | 39 | 0.59 | 2 | 0 | 278.5 | 4.22 |
| 2025-26 | IowaSt | 63-16 | 125 | 1.98 | 72 | 367 | .144 | 7 | 0.11 | 9 | 0.14 | 15 | 132 | 2.10 | 27 | 3 | 11 | 14 | 0.22 | 6 | 0 | 142.5 | 2.26 |
| TOTAL FOR IowaSt | | 63 - 16 | 125 | 1.98 | 72 | 367 | .144 | 7 | 0.11 | 9 | 0.14 | 15 | 132 | 2.10 | 27 | 3 | 11 | 14 | 0.22 | 6 | 0 | 142.5 | 2.26 |
| TOTAL | | 239 - 63 | 640 | 2.68 | 399 | 1805 | .134 | 42 | 0.18 | 67 | 0.28 | 64 | 537 | 2.25 | 100 | 20 | 90 | 110 | 0.46 | 11 | 1 | 772.0 | 3.23 |

Double-Doubles

| | Kills | Digs |
|-------------------|-------|------|
| vs. Texas Tech | 16 | 17 |
| at K-State | 13 | 10 |
| vs. Arizona State | 12 | 11 |



21

PAULA KRZEŚLAK

R-Junior, Defensive Specialist/Libero, 5-6
Tomaszów Mazowiecki, Poland (Im. Jaroslawa Dabrowskiego)



SEASON HIGHS

Digs: 14 vs. Arizona, 10/23/25
Aces: 1, Twice
Assists: 3 at Colorado, 10/25/25

CAREER HIGHS

Digs: 20 vs. Cincinnati, 11/25/23
Aces: 4 vs. Cincinnati, 11/25/23
Assists: 4, Twice

CAREER STATISTICS

| SEASON | TEAM | SM-MP | K | K/S | E | TA | PCT | A | A/S | SA | SA/S | SE | DIG | D/S | RE | BS | BA | TB | B/S | BE | BHE | PTS | PTS/S |
|---------|--------|----------|---|------|---|----|------|----|------|----|------|----|-----|------|----|----|----|----|------|----|-----|------|-------|
| 2022-23 | IowaSt | 24-9 | 2 | 0.08 | 2 | 4 | .000 | 0 | 0.00 | 3 | 0.13 | 11 | 25 | 1.04 | 4 | 0 | 0 | 0 | 0.00 | 0 | 0 | 5.0 | 0.21 |
| 2023-24 | IowaSt | 100-30 | 0 | 0.00 | 0 | 6 | .000 | 26 | 0.26 | 10 | 0.10 | 10 | 165 | 1.65 | 17 | 0 | 0 | 0 | 0.00 | 0 | 1 | 10.0 | 0.10 |
| 2024-25 | IowaSt | 79-23 | 0 | 0.00 | 0 | 3 | .000 | 15 | 0.19 | 6 | 0.08 | 18 | 147 | 1.86 | 9 | 0 | 0 | 0 | 0.00 | 0 | 0 | 6.0 | 0.08 |
| 2025-26 | IowaSt | 50-18 | 0 | 0.00 | 0 | 2 | .000 | 8 | 0.16 | 2 | 0.04 | 5 | 77 | 1.54 | 6 | 0 | 0 | 0 | 0.00 | 0 | 0 | 2.0 | 0.04 |
| TOTAL | | 253 - 80 | 2 | 0.01 | 2 | 15 | .000 | 49 | 0.19 | 21 | 0.08 | 44 | 414 | 1.64 | 36 | 0 | 0 | 0 | 0.00 | 0 | 1 | 23.0 | 0.09 |

30

ALEA GOOLSBY

Freshman, Outside Hitter, 5-10
Olathe, Kan. (Saint Thomas Aquinas)



SEASON HIGHS

Kills: 24, Twice
Attempts: 57 at Utah, 9/25/25
Hitting Pct.: .435 at Milwaukee, 9/5/25
Aces: 1, Four Times
Digs: 11, Four Times
Solo Blocks: 2 vs UCF, 10/4/25
Block Asst.: 4 vs. Texas Tech, 10/2/25

CAREER HIGHS

Kills: 24, Twice
Attempts: 57 at Utah, 9/25/25
Hitting Pct.: .435 at Milwaukee, 9/5/25
Aces: 1, Four Times
Digs: 11, Four Times
Solo Blocks: 2 vs UCF, 10/4/25
Block Asst.: 4 vs. Texas Tech, 10/2/25

CAREER STATISTICS

| SEASON | TEAM | SM-MP | K | K/S | E | TA | PCT | A | A/S | SA | SA/S | SE | DIG | D/S | RE | BS | BA | TB | B/S | BE | BHE | PTS | PTS/S |
|---------|--------|---------|-----|------|-----|-----|------|---|------|----|------|----|-----|------|----|----|----|----|------|----|-----|-------|-------|
| 2025-26 | IowaSt | 77-22 | 267 | 3.47 | 113 | 685 | .225 | 7 | 0.09 | 4 | 0.05 | 39 | 126 | 1.64 | 8 | 4 | 28 | 32 | 0.42 | 8 | 0 | 289.0 | 3.75 |
| TOTAL | | 77 - 22 | 267 | 3.47 | 113 | 685 | .225 | 7 | 0.09 | 4 | 0.05 | 39 | 126 | 1.64 | 8 | 4 | 28 | 32 | 0.42 | 8 | 0 | 289.0 | 3.75 |

Double-Doubles

| | Kills | Digs |
|----------------|-------|------|
| at Iowa | 17 | 11 |
| at Illinois | 19 | 11 |
| at #23 Utah | 24 | 11 |
| vs. Texas Tech | 15 | 11 |

NOTES ON ALEA

- Named Big 12 Rookie of the Week on Sept. 23.
- Has put up two 20-plus kill performances: vs. Omaha (24 kills at .378, 7 digs, 3 blocks) & at No. 23 Utah (24 kills at .316, 11 digs, 2 blocks).

