



# TEXAS A&M AGGIE VOLLEYBALL

Oct. 29, 2015 | Volleyball Contact: Debbie Darrah | ddarrah@athletics.tamu.edu | Office: 979-862-5449 | Cell: 979-777-2600 | 12thMan.com

## 2015 SCHEDULE | RESULTS

OVERALL | 13-6 | SEC | 6-2 |  
HOME | 8-1 | AWAY | 3-4 | NEUTRAL | 2-1 |

A 28	at Stanford (#2).....	L, 0-3
A 29	% vs. Minnesota .....	W, 3-2
S 5	<b>! WICHITA STATE</b> .....	<b>W, 3-0</b>
S 5	<b>! ABILENE CHRISTIAN</b> .....	<b>W, 3-1</b>
S 6	<b>! NEW MEXICO STATE</b> .....	<b>W, 3-2</b>
S 11	\$ vs. Iowa State .....	L, 1-3
S 11	\$ vs. Milwaukee.....	W, 3-1
S 12	\$ at Iowa.....	L, 1-3
S 15	<b>COLORADO STATE (#15)</b> .....	<b>W, 3-2</b>
S 18	at Florida State (#18).....	L, 1-3
S 19	at Florida A&M.....	W, 3-0
S 27	<b>* ARKANSAS (RV)</b> .....	<b>L, 1-3</b>
S 30	* at Auburn.....	W, 3-0
O 4	<b>* OLE MISS</b> .....	<b>W, 3-0</b>
O 9	* at Florida (#17) .....	L, 0-3
O 11	* at South Carolina .....	W, 3-2
O 16	<b>* ALABAMA (DIG PINK)</b> .....	<b>W, 3-0</b>
O 18	<b>* MISSISSIPPI STATE</b> .....	<b>W, 3-0</b>
O 21	<b>* LSU</b> .....	<b>W, 3-0</b>
O 30	* at Kentucky (#20).....	6 p.m.
N 1	* at Tennessee.....	12:30 p.m.
N 4	<b>* MISSOURI (RV)</b> .....	<b>5 P.M.</b>
N 8	<b>* GEORGIA</b> .....	<b>1:30 P.M.</b>
N 13	* at Ole Miss.....	6:30 p.m.
N 15	* at Mississippi State .....	1 p.m.
N 18	<b>* KENTUCKY (#20)</b> .....	<b>9 p.m.</b>
N 22	<b>* FLORIDA (#12)</b> .....	<b>1 P.M.</b>
N 25	* at Missouri (RV) .....	6:30 p.m.
N 28	* at Arkansas .....	1:30 p.m.
D 3-5	< NCAA 1st & 2nd Rounds .....	TBA
D 11-12	^ NCAA Regionals .....	TBA
D 17	> NCAA Semifinals .....	TBA
D 19	> NCAA Championship .....	TBA

All times are Central Time (CT) and subject to change.

\* Southeastern Conference match; % at Stanford, Calif.

! Texas A&M Invitational, College Station, Texas (1st place, 4 teams);

\$ Iowa Tournament, Iowa City, Iowa < NCAA 1st/2nd Rounds

^NCAA Regionals (San Diego, Calif., Des Moines, Iowa, Lexington, Ky. or Austin, Texas)

> NCAA Championships, Omaha, Neb.

Home matches (in BOLD CAPS) played at Reed Arena, College Station, Texas

(Doors open one hour prior to match time)

### TICKETS:

- \$9 reserve seating; \$7 adult general admission; \$4 for youth, high school age and under.
- A&M students without a sports pass can purchase tickets for \$4 each.
- Tickets may be purchased at Reed Arena beginning one hour before match time or in advance at 12thManFoundation.com or by calling the Athletic Ticket Office at 979-845-2311 or toll free at 1-888-99-AGGIE

## TEXAS A&M VS. #20 KENTUCKY



Friday, Oct. 30, 7 p.m. (6 p.m. CT)  
Memorial Coliseum, Lexington, Ky.  
SEC Network



Texas A&M-UK All-Time Series Record: UK leads 7-6

A&M Home: A&M leads 4-3 | Away: UK leads 4-0 | Neutral: A&M leads 2-0 | SEC: UK leads 3-1

Last Meeting: A&M won, 3-1 (25-22, 26-24, 17-25, 25-16), Oct. 26, 2014, Reed Arena, College Station

Streak: A&M won 1

## TEXAS A&M VS. TENNESSEE



Sunday, Nov. 1, 1:30 p.m. (12:30 p.m. CT)  
Thompson-Boling Arena, Knoxville, Tenn.  
SEC Network +



Texas A&M-Tennessee All-Time Series Record: Tied 6-6

A&M Home: A&M leads 3-2 | Away: Tied 3-3 | Neutral: UT leads 1-0 | SEC: A&M leads 4-1

Last Meeting: A&M won, 3-0 (25-21, 25-14, 25-23), Nov. 16, 2014, Reed Arena, College Station, Texas

Streak: A&M won 4



TEXAS A&M  
Aggies

Record: 13-6, 6-2 SEC

Streak: Won 4

Most recent: def. LSU,  
3-0 (25-19, 25-22, 25-18),  
Wednesday, Oct. 21, Reed  
Arena, College Station, Texas

Head Coach: Laurie Corbelli  
A&M Record: 477-227 (23rd)  
Career Record: 577-333 (30th)

### Probable Starters:

MB: Babers (.435, 3.17 kps, 1.34 bps)  
MB: Sullivan (.374, 2.27 kps, 0.77 bps)  
S: Aiple (11.36 aps, 1.79 dps)  
OH: Hardesty (.228, 1.96 kps, 2.35 dps)  
OH: McGee (.208, 2.71 kps, 3.06 pps)  
OPP: Reasor (.217, 2.04 kps, 0.77 bps)  
L: Nettles (3.69 dps)

Up Next: vs. Missouri, Wed.,  
Nov. 4, 5 p.m., Reed Arena,  
College Station, Texas  
ESPNU



#20 KENTUCKY  
Wildcats

Record: 15-6, 8-1 SEC

Streak: Won 2

Most recent: def. Ole Miss,  
3-0 (25-20, 25-18, 25-23),  
Sunday, Oct. 25, Gillom Sports  
Center, Oxford, Miss.

Head Coach: Craig Skinner  
UK Record: 243-96 (11th)  
Career Record: same

### Most Recent Starters:

MB: Brown (.299, 2.62 kps, 1.57 bps)  
MB: Franklin (.311, 1.78 kps, 1.08 bps)  
S: Bergren (10.38 aps, 0.87 bps)  
OH: Mack (.137, 3.34 kps, 2.36 dps)  
OH: Thomasson (.169, 2.35 kps, 2.98 dps)  
DS: Dailey (0.42 dps)  
L: Dusek (5.03 dps)

Up Next: vs. LSU, Sun., Nov.  
1, 1:30 p.m. Memorial Coli-  
seum, Lexington, Ky.



TENNESSEE  
Volunteers

Entering Friday match vs. LSU

Record: 19-6, 5-5 SEC

Streak: Won 1

Most recent: def. Mississippi  
State, 3-2 (17-25, 23-25, 26-  
24, 25-16, 15-7), Newell-Gris-  
som Building, Starkville, Miss.

Head Coach: Rob Patrick  
UT Record: 378-215 (19th)  
Career Record: same

### Most Recent Starters:

MH: Treiber (.345, 2.20 kps, 1.12 bps)  
MB: Hembry (.293, 2.28 kps, 0.95 bps)  
S: Dempsey (10.14 aps, 2.43 dps)  
OH: Holmes (.234, 2.68 kps)  
OH/RS: Jimenez (.193, 2.99 kps, 2.5 dps)  
DS: Hatches (1.59 dps)  
L: Villano (4.51 dps)

Up Next: at Alabama, Fri.,  
Nov. 6, 7 p.m., Foster Audito-  
rium, Tuscaloosa, Ala.

## TEXAS A&M RETURNS TO THE ROAD TO TAKE ON #20 KENTUCKY, TENNESSEE

Texas A&M, which has won each of its last four matches to equal its longest win streak of the season, hits the road this weekend to take on No. 20 Kentucky and Tennessee. The match against the league-leading Wildcats begins Friday at 7 p.m. ET (6 p.m. CT) at Memorial Coliseum in Lexington, Ky., and the contest will be televised on the SEC Network. The match against the Volunteers is Sunday at 1:30 p.m. ET (12:30 p.m. CT) at Thompson-Boling Arena in Knoxville, Tenn., with live streaming of the match available on SEC Network +.

The Aggies (13-6, 6-2 SEC), which entered this week tied with Missouri for second place in the SEC standings, are coming off an undefeated three-match homestand in which A&M swept Alabama, Mississippi State and LSU. A&M has not played since two-time reigning SEC Setter of

# 2015 TEXAS A&M VOLLEYBALL

## 2015 A&M PLAYER HONORS

### Stephanie Aiple

Two-time SEC Setter of the Week (10/19; 10/26)  
PrepVolleyball.com Setter of the Week (9/8)

### Jazzmin Babers

SEC Player of the Week (10/5)  
SEC Defensive Player of the Week (10/5)  
SEC Defensive Player of the Week (9/8)  
MVP - Texas A&M Invitational  
Comfort Suites Challenge All-Tournament Team

### Emily Hardesty

Texas A&M Invitational All-Tournament Team

### Kiara McGee

SEC Offensive Player of the Week (10/26)  
Texas A&M Invitational All-Tournament Team

### Shelby Sullivan

SEC Offensive Player of the Week (10/19)  
Preseason All-SEC Team  
Senior CLASS Award Candidate

the Week **Stephanie Aiple** and SEC Offensive Player of the Week **Kiara McGee** led the Aggies to a 25-19, 25-22, 25-18 victory over LSU on Wednesday, Oct. 21 at Reed Arena, marking the first time A&M had won a home match against the Tigers since joining the SEC in 2012.

Kentucky is 15-6 overall, including 8-1 in league play after sweeping both Alabama and Ole Miss on the road last weekend.

Tennessee (19-6, 5-5 SEC), which has already won four more SEC matches than it did in the entire 2014 season, is in sixth place in the SEC entering a Friday home match against LSU. Most recently, the Volunteers overcame a 2-0 deficit to defeat Mississippi State, 17-25, 23-25, 26-24, 25-16, 15-7, in Starkville, Miss.

## A&M IN THE SEC

- This marks A&M's fourth season as a member of the SEC.
- Last year, A&M went 13-5 in SEC play, tying Alabama for fourth place.
- A&M's best SEC finish was in 2012, its inaugural season in the conference. The Aggies went 16-4, winning the SEC Western Division and placing second overall.
- A&M is 45-19 (.703) all-time in SEC matches -- 24-9 (.727) in home SEC matches and 21-10 (.677) in away SEC matches.
- The Aggies are 2-1 in away SEC matches in 2015.

A&M swept Auburn (Sept. 30), fell 3-0 at No. 17 Florida on Oct. 9, and defeated South Carolina, 3-2, on Oct. 10.

- The Aggies are 4-1 in home SEC matches this year. Since suffering its only home loss of the season in the SEC opener to Arkansas, A&M has won its last four home matches all in three-set sweeps, having defeated Ole Miss, Alabama, Mississippi State and LSU.
- Last year A&M went 7-2 in conference home matches and 6-3 in SEC away matches.
- The Aggies are picked to finish fourth in the SEC in 2015 according to a preseason vote of the league's head coaches. Florida, the 2014 SEC champion after posting a perfect 18-0 record in conference play, is picked to defend its title.
- Senior middle blocker **Shelby Sullivan** was named to the nine-member Preseason Volleyball All-SEC Team for the second consecutive year. She was an All-SEC Team selection at the conclusion of each of the last two seasons and she was the 2014 SEC Scholar Athlete of the Year.

## TEXAS A&M QUICK HITS

- A&M is 8-1 in home matches and 3-4 in away matches.
- A&M entered the week 10th in the nation and second in the SEC with a .281 hitting efficiency.
- In SEC matches only, A&M leads the conference in hitting percentage (.308) and assists (13.37) and kills (14.37) per set.
- A&M is last in the league in opponent hitting percentage (.226) and aces per set (0.99) for the

## 2015 AVCA TOP 25 POLL

(Oct. 26 2015)

Rank	School(No. 1 votes)	Total Points	2015 Rec.	Prev. Week
1	Southern California (64)	1600	22-0	1
2	Texas	1533	18-1	2
3	Penn State	1451	19-2	5
4	Minnesota	1327	17-3	9
5	Washington	1306	18-2	4
6	Hawai'i	1177	18-1	8
7	Stanford	1151	13-5	11
8	UCLA	1145	17-3	10
9	Nebraska	1118	16-4	3
10	Kansas	1100	19-1	7
11	Ohio State	1042	19-3	6
T-12	Florida	801	15-4	15
T-12	Wisconsin	801	14-6	16
14	Arizona State	785	17-4	13
15	Florida State	673	17-4	17
16	BYU	639	18-3	12
17	Purdue	594	17-4	19
18	Colorado State	472	17-3	20
19	Arizona	440	14-8	14
20	Kentucky	418	15-6	21
21	Illinois	361	13-8	18
22	Western Kentucky	227	23-2	22
23	Louisville	202	16-4	24
24	San Diego	98	16-6	26
25	Michigan	89	15-6	23

Others receiving votes and listed on two or more ballots: Colorado 57; Michigan State 53; Arkansas State 33; SMU 32; Long Beach State 22; Creighton 19; North Carolina 14; Oregon 13; Missouri 5  
One team mentioned on only one ballot for a total of four combined points.

Dropped Out: Oregon 25

## 2015 TEXAS A&M NUMERICAL ROSTER

No.	Player	Pos.	Ht.	Cl-Exp	Hometown (High School/College)
1	Katelyn Labhart	DS	5-10	Jr-2L	Whitesboro, Texas (Whitesboro)
2	Shelby Sullivan	MB	6-2	Sr-3L	Richardson, Texas (J.J. Pearce)
3	Paige Panter	DS	5-11	Fr-HS	Southlake, Texas (Southlake Carroll)
4	Kiara McGee	OH	5-11	So-1L	San Antonio, Texas (Taft)
5	Amy Nettles	L/DS	5-4	So-1L	San Antonio, Texas (Churchill)
7	Montse Castro	OH/MB	6-7	Fr-HS	Mexico City, Mexico
8	Angela Lowak	OH	6-0	Sr-3L	New Braunfels, Texas (New Braunfels)
10	Margaret Connett	OH	6-1	Fr-HS	The Woodlands, Texas (Cooper)
11	Amy Houser	DS/S	5-8	Fr-HS	Houston, Texas (Memorial)
12	Emily Hardesty	OH	6-3	Jr-2L	Plano, Texas (Trinity Christian Academy)
13	Gabby Litwin	DS	5-8	So-RS	Allen, Texas (Plano East/Mississippi State)
14	Victoria Arenas	L/DS	5-6	Jr-2L	Cypress, Texas (Cypress Woods)
15	Ashlie Reasor	OPP	6-1	So-1L	San Antonio, Texas (Reagan)
17	Kaysie Shebencek	S/OPP	6-1	Jr-2L	Racine, Wis. (Burlington)
22	Jazzmin Babers	MB	6-2	RS Jr-2L	Bowling Green, Ohio (Midway-Waco, Texas)
23	Stephanie Aiple	S	6-1	So-1L	Round Rock, Texas (Round Rock)
16	Kaitlyn Blake	MB/OPP	6-2	Fr-HS	Allen, Texas (Allen)

## Volleyball Staff

Head Coach: Laurie Corbelli, 23rd season  
Associate Head Coach: John Corbelli, 23rd season  
Assistant Coach: Steve Greene, 5th season  
Director of Volleyball Operations: Kimberly Williams  
Strength and Conditioning Coach: Raychelle Ellsworth  
Athletic Trainer: Erin Boyette  
Athletic Training Students: Molly Ganz, Sara Lynch, Taelar Smith  
Managers: Kara Musherush, Brittany Nutting, Victoria Nutting  
Sports Information: Debbie Darrah

## Pronunciations:

Stephanie Aiple	EYE-plee
Victoria Arenas	ah-RAY-nahs
Jazzmin Babers	BAY-bers
Montse Castro	maun-SAY
Margaret Connett	cah-NET
Kiara McGee	kee-r-ah
Paige Panter	PAINT-er
Ashlie Reasor	REE-ser
Kaysie Shebencek	SHEB-en-eck

## A&M AVCA WEEKLY RANKING

Date	AVCA Rank	Date	AVCA Rank
Preseason	RV (30th)	Oct. 19	NR
Aug. 31	RV (27th)	Oct. 26	NR
Sept. 7	25	Nov. 2	
Sept. 14	RV (42nd)	Nov. 9	
Sept. 21	RV (32nd)	Nov. 16	
Sept. 28	NR	Nov. 23	
Oct. 5	NR	Nov. 30	
Oct. 12	NR	Dec. 21 (final)	

# 2015 TEXAS A&M VOLLEYBALL

full season.

- The Aggies hit .429 in the sweep against Alabama on Oct. 16 and .410 in the 3-0 win against Mississippi State on Oct. 18, marking the first time since the first two matches of the 2009 season that hit above .400 in back-to-back matches. A&M, which hit above .400 only once in 2014, has hit above .400 five times overall this season, including a season-high .500 at Florida A&M, marking the third highest hitting percentage in school history. A&M hit .481 at Auburn and .470 against Wichita State, which also rank in the top 10 in program history.
- A&M is 13-0 when leading its opponent in attack percentage, 11-0 when leading in blocks, 11-0 when leading in points and 10-0 when leading in kills.

### TEAM STATISTICAL COMPARISONS

Category	TAMU	UK	UT
Hitting %	.281	.223	.228
Opp. Hitting %	.226	.183	.160
Kills per set	13.93	13.47	12.49
Opp. kills/set	13.06	12.43	12.19
Assists per set	12.99	12.36	11.58
Opp. assists/set	12.25	11.64	11.48
Aces per set	0.99	1.21	1.09
Opp. aces/set	1.24	0.96	1.17
Digs per set	13.49	14.79	15.54
Opp. digs/set	12.27	14.45	14.43
Blocks per set	2.41	2.77	2.24
Opp. blocks/set	1.96	2.24	2.01

### 2015 SEC PRESEASON COACHES POLL

(First-Place Votes in Parentheses)

Place	School	Points
1.	Florida (12)	144
2.	Alabama (1)	127
3.	Kentucky	120
<b>4.</b>	<b>Texas A&amp;M</b>	<b>113</b>
5.	Arkansas	88
6.	LSU	85
7.	Missouri	84
8.	Ole Miss	76
9.	Auburn	59
10.	Georgia	47
11.	South Carolina	30
12.	Mississippi State	21
13.	Tennessee	20

- The Aggies are 12-1 when winning the first set and 1-5 when dropping the first set.
- A&M is 4-0 in five-set matches.
- A&M climbed one spot to No. 31 in this week's NCAA RPI. A&M was No. 38 in the first two weeks the RPI was released and was No. 32 last week. Last year A&M finished 22nd.
- After using 10 different starting lineups over the first 13 matches, A&M has used basically the same starting lineup over the last seven matches with the only difference being whether opposite hitter **Ashlie Reasor** starts in the front row or freshman defensive specialist **Amy Houser** starts in place of Reasor in the back row. Setter **Stephanie Aiple**, outside hitters **Emily Hardesty** and **Kiara McGee** and middle blockers **Jazzmin Babers** and **Shelby Sullivan** have all been in the starting lineup in the last seven matches.
- A&M's season schedule includes 10 matches against teams that reached at least the second round of the NCAA Championship tournament and were ranked in the top 25 or received votes in the final 2014 AVCA Division I Coaches Poll.
- Eight of A&M's matches are against teams ranked in the top 25 in this week's AVCA Top 25 Poll: No. 4 Minnesota, No. 7 Stanford, No. 15 Florida State and No. 18 Colorado State, as well as two matches each against No. 12 Florida and No. 20 Kentucky. A&M has an additional two matches against Missouri, which is receiving votes. The Aggies are currently 2-3 against teams that are in this week's Top 25.

### TEXAS A&M PLAYER QUICK HITS

- Sophomore **Stephanie Aiple** repeated as SEC Setter of the Week and sophomore outside

### 2015 PRESEASON ALL-SEC TEAM

<b>Krystal Rivers</b> .....Alabama .....	OPP.	R-Jr.
<b>Chanell Clark-Bibbs</b> .....Arkansas .....	MB	Jr.
<b>Rhamat Alhassan</b> .....Florida .....	MB	So.
<b>Mackenzie Dagostino</b> .....Florida .....	S	Sr.
<b>Alex Holston</b> .....Florida .....	RS	Jr.
<b>Morgan Bergren</b> .....Kentucky.....	S	Jr.
<b>Nakeyta Clair</b> .....Ole Miss .....	MB	Sr.
<b>Carly Kan</b> .....Missouri .....	OH	Jr.
<b>Shelby Sullivan</b> .....Texas A&M .....	MB	Sr.

hitter **Kiara McGee** was named SEC Offensive Player of the Week for the first time in her career on Monday after leading the Aggies to a 3-0 sweep against LSU in A&M's only match of last week. **Aiple** had 40 assists for a 13.33 per set average against the Tigers. Her 40 assists is the second most by an A&M player in a three-set match this season. **McGee** averaged 5.33 points per set while taking match-high honors with 13 kills. Her .476 hitting percentage is a career high when posting 10 or more kills. **McGee** also had three blocks -- including one solo -- to finish with 16.0 points.

• Redshirt junior middle blocker **Jazzmin Babers** entered the week leading the SEC and ranked sixth in the nation with a .435 hitting percentage for the full season. Babers also is third in the SEC and 29th nationally with 1.34 blocks per set for the full season.

• In SEC matches only, **Babers**, who was the SEC Player of the Week on Oct. 5 and is a two-time SEC Defensive Player of the Week, leads the league with a .500 hitting efficiency in conference matches only. She is third in the conference with 1.37 blocks per set in SEC play.

• **Babers** has started every match of her career (80) and is hitting .371 for her career.

• **Babers**, who has posted double-figure blocks twice this season and has led or tied for the team lead in blocks in 15 of 19 matches this season, ranks seventh in the A&M all-time career records with 326 block assists. She also ranks ninth in the career records for total blocks with 372 and needs 19 more total blocks to move into eighth place, surpassing Margaret Spence, who had 390 total blocks from 1983-86.

• Sophomore setter **Stephanie Aiple** is second in the SEC and 16th in the nation with 11.36 assists per set for the full season. **Aiple** also is second in the conference with 11.46 assists per set in league play.

• After missing two matches with a foot injury suffered against No. 15 Colorado State on Sept. 15, **Aiple** returned to the court in the second set against Arkansas on Sept. 27. **Aiple** returned to the starting lineup in the sweep against Auburn on Sept. 30, directing the Aggie offense to a .481 hitting percentage, the fifth highest team hitting percentage in program history and setting an A&M record for highest hitting percentage in a three-set SEC match.

• Senior middle blocker **Shelby Sullivan** is hitting .374 this season and .378 for her career, putting her on pace to shatter the A&M career record for hitting percentage (.342) held by Sherri Brinkman (1983-85).

• **Amy Nettles** is the only player to have appeared in all 71 sets -- all at the libero position -- and **Babers** is the only player to have started all 19 matches. Meanwhile, sophomore setter **Stephanie Aiple** (foot), senior middle

### 2015 SEC STANDINGS (As of Oct. 29)

	SEC	Pct.	All	Pct.	Home	Away	Neutral	Last 10	Streak
Kentucky	8-1	.889	15-6	.714	7-2	7-1	1-3	9-1	W2
Missouri	7-2	.778	19-3	.864	8-0	5-3	6-0	7-3	W1
Texas A&M	6-2	.750	13-6	.684	8-1	3-4	2-1	7-3	W4
Florida	7-3	.700	15-4	.789	7-1	5-3	3-0	7-3	W6
LSU	5-4	.556	9-11	.450	4-4	2-4	3-3	6-4	W1
Ole Miss	5-5	.500	19-6	.760	11-3	4-3	4-0	5-5	W1
Tennessee	5-5	.500	19-6	.760	8-1	4-5	7-0	5-5	W1
Auburn	4-4	.500	12-8	.600	7-3	3-3	2-2	5-5	L1
Alabama	4-5	.444	10-13	.435	7-5	3-6	0-2	5-5	L1
Arkansas	3-5	.375	13-7	.650	6-2	3-5	4-0	5-5	L5
Mississippi State	3-7	.300	13-10	.565	8-3	2-6	3-1	3-7	L4
South Carolina	2-7	.222	9-13	.409	6-5	1-6	2-2	2-8	W1
Georgia	0-9	.000	5-16	.238	4-8	0-6	1-2	1-9	L9

# 2015 TEXAS A&M VOLLEYBALL

blocker **Shelby Sullivan** (knee) and senior outside hitter **Angela Lowak** (ankle, knee) all have missed multiple starts at some point in the season due to injuries.

- Sophomore outside hitter **Kiara McGee**, who is second on the team among active players with 2.71 kills and 3.06 points per set for the full season and 2.84 kills per set in SEC matches only, is averaging a team-best 3.42 kills while hitting at a .275 clip in home matches only.
- **Jazzmin Babers** is averaging 1.58 blocks per set in home matches only.
- During A&M's four-match win streak, sophomore opposite hitter **Ashlie Reasor** is hitting .387 with 3.00 kills and 3.39 points per set. For the season, Reasor is hitting .217 with 2.04 kills and 2.47 points per set.
- Sophomore libero **Amy Nettles** has led or tied for the team lead in digs in all but two matches this season and has posted double-figure digs in a team-leading 15 matches. She is averaging a team-high 3.69 digs per set for the full season, ranking 10th in the SEC. In home matches only, **Nettles** is averaging 4.12 digs per set.
- **Nettles**, who celebrated her 20th birthday on Wednesday, Oct. 28, is the only player to

reach 20 or more digs in a match this season, posting a season-high and tying her career high with 27 in the 3-2 win against No. 15 Colorado State and notching 20 digs in a 3-1 win against Milwaukee.

- Junior outside hitter **Emily Hardesty** and sophomore setter **Stephanie Aiple** lead A&M in double-doubles with three apiece.
- The athletics and versatile **Kaitlyn Blake** has started seven matches as either an opposite hitter or middle blocker. The freshman has appeared in 15 matches overall and is hitting .261 and averaging 2.00 kills and 0.76 blocks per set for the season.
- Junior setter **Kaysie Shebeneck** made her first three starts of the season at No. 18 Florida State, at Florida A&M and at home against Arkansas after **Aiple** suffered a foot injury in the second set against Colorado State. **Shebeneck**, who led the Aggies to a 3-2 victory against the Rams, is averaging 8.88 assists per set and directed the Aggie offense to a .500 hitting percentage against Florida A&M, marking the third highest hitting percentage in program history. **Shebeneck** started four matches at setter last season. As a freshman, she started five at the opposite hitter position.

## TEXAS A&M QUICK FACTS

Location	College Station, Texas
Opened	1876
Enrollment	59,000
Nickname	Aggies
Colors	Maroon and White
Conference	Southeastern (SEC)
President	Michael K. Young
Athletics Director	Eric Hyman
Home Court (Capacity)	Reed Arena (12,989)
Web site	12thMan.com
Twitter/Instagram	@AggieVolleyball

### VOLLEYBALL STAFF

Head Coach	Laurie Corbelli
A&M Record	477-227 (23rd season)
Career Record	577-333 (30th season)
Associate Head Coach	John Corbelli (23rd season)
Assistant Coach	Steve Greene (5th season)
Strength Coach	Raychelle Ellsworth
Dir. of Volleyball Operations	Kimberly Williams
Athletic Trainer	Erin Boyette
Athletic Training Students	Molly Ganz, Sara Lynch, Taelar Smith
Managers	Kara Mushrush, Brittany Nutting, Victoria Nutting
Scholastic Supervisor	Mindy Phillips
Videographers	Adison Haager, Beth Shelterle
Sports Information	Debbie Darrah
Office Phone	979-862-5449
Cell Phone	979-777-2600
Email	ddarrah@athletics.tamu.edu

### VOLLEYBALL FACTS

Ranking (AVCA)	not ranked
2014 Record	21-9
2014 SEC (finish)	13-5 (T-4th)
Starters Returning/Lost	6 + libero / 0
Letterwinners Returning/Lost	11 / 4
Newcomers	5
All-Time Record	966-528-2 (40th season)
NCAA Postseason Appearances	22
('81-82-85-86-93-94-95-96-97-98-99-2000-01-02-03-04-05-09-11-12-13-14)	
Best Finish	Elite Eight (1999, 2001)
NCAA Postseason Record	25-22 (.532)

## LAURIE CORBELLI (San Francisco, 1988) - A&M'S WINNINGEST COACH



Laurie Corbelli is in her 23rd season at Texas A&M and is the winningest coach in Aggie volleyball history in total victories and ranks second in winning percentage with a 477-227 (.678) record...The 1999-2000 Texas A&M Student-Athlete Advisory Committee's Coach of the Year according to a vote of the Aggie student-athletes, the 1995 District VI Coach of the Year and the two-time SWC Coach of the Year has directed A&M to a historic 18 trips to the NCAA tournament in the last 22 years, including the school's two NCAA Elite Eight appearances (1999, 2001) and an all-time high No. 9 ranking in the final '99 AVCA Top 25 Poll. In 2012, the Aggies' first year in the Southeastern Conference, Corbelli led the Aggies to the SEC Western Division title and a second place overall finish...Corbelli, who posts a 577-333 (.634) career record, began her coaching career in 1986 at the University of San Francisco. Following a four-year stint at the helm of the Lady Dons, Corbelli was hired at Santa Clara University. In 1992, her final season at Santa Clara, Corbelli directed the Broncos to the West Coast Conference Championship, and she earned WCC and West Region Coach of the Year accolades as the Broncos made their first-ever NCAA tournament appearance...The former Laurie Flachmeier was a silver medalist as a member of the 1984 USA Olympic Volleyball Team and received the Flo Hyman All-Time Great Player Award by USA Volleyball in 1998...A 1988 graduate of the University of San Francisco with a degree in physical education, Corbelli is married to A&M associate head coach John Corbelli...Corbelli-coached players have earned nine AVCA first-, second- or third-team All-America citations in the last 17 years, as well as 10 honorable mentions...A two-time All-American under Corbelli, former Aggie standout Stacy Sykora (1995-98) became A&M's first varsity athlete to compete in three Olympics. Sykora was the starting libero for Team USA at both the 2000 Olympic Games in Sydney, Australia, and the 2004 Olympic Games in Athens, Greece, and was a silver medalist as a defensive specialist at the 2008 Beijing Games. Throughout her USA National Team career, Sykora honored Corbelli by wearing No. 5, the same number Corbelli wore at the 1984 Olympics.

### CORBELLI'S YEAR-BY-YEAR COACHING RECORD

School	Year	W	L	Postseason
San Francisco	1986	8	24	
San Francisco	1987	16	13	
San Francisco	1988	10	16	
San Francisco	1989	5	18	
Santa Clara	1990	14	13	
Santa Clara	1991	26	11	NIVC (3rd place)
Santa Clara	1992	21	11	NCAA (1st Round)
Texas A&M	1993	27	8	NCAA (2nd Round)
Texas A&M	1994	19	14	NCAA (2nd Round)
Texas A&M	1995	23	7	NCAA (Regional Semifinal)
Texas A&M	1996	25	8	NCAA (2nd Round)
Texas A&M	1997	26	8	NCAA (Regional Semifinal)
Texas A&M	1998	21	9	NCAA (2nd Round)
Texas A&M	1999	28	6	NCAA (Regional Final)
Texas A&M	2000	20	9	NCAA (2nd Round)
Texas A&M	2001	26	6	NCAA (Regional Final)
Texas A&M	2002	21	10	NCAA (2nd Round)
Texas A&M	2003	23	10	NCAA (Regional Semifinal)
Texas A&M	2004	19	9	NCAA (2nd Round)
Texas A&M	2005	16	14	NCAA (1st Round)
Texas A&M	2006	12	16	
Texas A&M	2007	21	10	
Texas A&M	2008	16	14	
Texas A&M	2009	20	11	NCAA (Regional Semifinal)
Texas A&M	2010	13	17	
Texas A&M	2011	23	8	NCAA (2nd Round)
Texas A&M	2012	25	6	NCAA (2nd Round)
Texas A&M	2013	19	12	NCAA (2nd Round)
Texas A&M	2014	21	9	NCAA (1st Round)
Texas A&M	2015	13	6	
Career	30 <sup>th</sup> season	577	333	.634
at Texas A&M	23 <sup>rd</sup> season	477	227	.678

### A&M ALL-TIME COACHING LEADERS

BY VICTORIES		BY WINNING PERCENTAGE	
Laurie Corbelli (1993-Present)	477-227-0	Laura Kitzmiller (1975-77)	.726
Laura Kitzmiller (1975-77)	180-101-0	Laurie Corbelli (1993-Present)	.678
Dave Schakel (1978-79)	123-122-0	Dave Schakel (1978-79)	.654
Terry Condon (1980-85)	118-44-2	Terry Condon (1980-85)	.641

# 2015 TEXAS A&M VOLLEYBALL

• Outside hitter **Angela Lowak** is out indefinitely after suffering a knee injury (dislocated patella) at Florida State on Sept. 19. The senior co-captain posted double-figure kills in four consecutive matches leading up to the FSU match, and she was leading the team with 3.22 kills per set before suffering the injury.

• Freshman 6-7 outside hitter/middle blocker **Montse Castro** spent two weeks competing for Mexico at the Women's U20 World Championship in Puerto Rico in September. Castro, believed to be the tallest player in the history of the A&M program, has yet to appear in a match.

• Four players -- **Jazzmin Babers, Katelyn Labhart, Angela Lowak** and **Shelby Sullivan** -- each received their Aggie Ring on Sept. 25, celebrating one of the most revered and symbolic traditions at Texas A&M. The tradition began with the Class of 1889.

## A&M-KENTUCKY ALL-TIME SERIES

• Kentucky leads the all-time series against Texas A&M, 7-6, including 4-1 in SEC matches only.

• Texas A&M won the most recent meeting, as the 24th-ranked Aggies upset then-No. 16 Kentucky, 3-1 (25-22, 26-24, 17-25, 25-16) on Oct. 26, 2014, at Reed Arena in College Station. It was A&M's first-ever SEC win against the Wildcats, who entered the match riding an overall seven-match win streak against the Aggies.

• The Wildcats are 4-0 against A&M in matches played in Lexington, including sweeps in all three meetings as SEC foes.

• Five of the last six sets played at Memorial Coliseum between A&M and Kentucky have been decided by the minimum two points.

• A&M won the first five meetings of the series, which began in 1982.

• In the first-ever meeting as SEC foes, Kentucky defeated the Aggies, 3-2 (25-23, 24-26, 25-18, 25-20, 15-12) on Sept. 23, 2012. It was A&M's first conference loss in SEC history after opening its inaugural season in the league, 2-0, in conference matches.

• In the most recent meeting (Oct. 26, 2014), No. 24 Texas A&M used a balanced offensive attack and solid defensive play with freshman opposite hitter **Ashlie Reasor** posting a then-career-high 15 kills to lead a contingent of four Aggies with double-figure kills. A&M had five players reach double figures in digs, including then-freshman libero **Amy Nettles** who had 26 digs, the most by an A&M player in a four-set match in 2014. Then-sophomore middle blocker **Jazzmin Babers**, who contributed 10 kills without an error, had a match-high seven

blocks to lead the Aggies to a 12-6 advantage in blocking, and then-freshman setter **Stephanie Aiple**, who set A&M to a .295 to .189 advantage in hitting efficiency, had her team-leading fifth double-double of the season, dishing out 50 assists and tallying 11 digs. Senior outside hitter Lauren O'Conner led the Wildcats with 19 kills, and libero Jackie Napper led Kentucky in digs with 20.

• A&M and Kentucky will meet again on Wednesday, Nov. 18 at Reed Arena in College Station. The match is currently slated to begin at 9 p.m. and will be televised by the SEC Network.

• A&M's all-time records/results vs. Kentucky:  
Overall: 6-7 H: 4-3 A: 0-4 N: 2-0 SEC: 1-4

Oct. 9, 1982	N	W	15-9, 16-14
Oct. 29, 1982	H	W	4-15, 13-15, 15-2, 15-11, 15-12
Oct. 30, 1982	H	W	15-9, 10-15, 16-14, 10-15, 15-11
Sept. 14, 1985	N	W	15-9, 15-6, 15-7
Oct. 4, 1985	H	W	15-10, 8-15, 15-5, 15-10
Oct. 31, 1986	A	L	15-11, 8-15, 12-15, 8-15
Oct. 15, 1988	H	L	4-15, 16-18, 12-15
Dec. 2, 2011	H	L	18-25, 21-25, 19-25
Sept. 23, 2012	H	L	23-25, 26-24, 18-25, 25-20, 12-15
Oct. 14, 2012	A	L	11-25, 22-25, 19-25
Nov. 22, 2013	A	L	24-26, 23-25, 24-26
Oct. 5, 2014	A	L	20-25, 26-28, 28-30
Oct. 26, 2014	H	W	25-22, 26-24, 17-25, 25-16

## SCOUTING KENTUCKY

• Kentucky is 15-6 overall and atop the SEC standings with an 8-1 record.

• The Wildcats have won 11 of their last 12 matches and are riding a two-match win streak after sweeping both Alabama and Ole Miss on the road last weekend.

• Kentucky is No. 10 in this week's NCAA RPI, and the Wildcats climbed one spot to No. 20 in this week's AVCA Top 25 Poll.

• The Wildcats are 7-2 at Memorial Coliseum. The only two losses were against Ohio, 3-1, on Sept. 1, and to No. 17 Florida, 3-1, on Oct. 18 as the Gators avenged a 3-1 loss to Kentucky in Gainesville, Fla., on Sept. 27.

• Sophomore 6-4 middle blocker Kaz Brown is the reigning SEC Player of the Week and also earned SEC Defensive Player of the Week honors after averaging 3.0 blocks per set in sweeps at Alabama and Ole Miss.

• Brown leads the SEC with 1.78 blocks per set in conference matches only. She entered the week ranked second in the league and eighth in the nation with 1.57 blocks per set in all matches.

• Kentucky entered the weekend leading the SEC and ranked 14th in the nation with 14.27 kills per set. The Wildcats also were leading the league and were 29th in the country with 13.04

assists per set.

• Sophomore libero Ashley Dusek leads the SEC with 5.19 digs per set in conference matches only and a 5.03 average for the full season.

• Kentucky was picked to finish third in the SEC according to a preseason vote of the conference coaches.

## A&M-TENNESSEE ALL-TIME SERIES

• The all-time series between Texas A&M and Tennessee is tied at 6-6, including 3-3 in matches

## A&M IN SEC RANKINGS (AS OF OCT. 29)

Team Rankings	All Matches	SEC Only
<b>Category</b>		
Hitting percentage	2nd (.281)	1st (.308)
Opponent hitting pct	13th (.226)	7th (.218)
Assists per set	1st (12.99)	1st (13.37)
Kills per set	2nd (13.93)	1st (14.37)
Blocks per set	4th (2.41)	4th (2.52)
Aces per set	13th (0.99)	10th (1.04)
Digs per set	10th (13.49)	11th (13.07)

Individual Rankings	All Matches	SEC Only
<b>Category</b>		
<b>Hitting Percentage</b>		
Jazzmin Babers	2nd (.435)	1st (.500)
Shelby Sullivan	8th (.374)	5th (.393)

<b>Kills Per Set</b>	
Jazzmin Babers	9th (3.17) ..... 6th (3.56)

<b>Assists Per Set</b>	
Stephanie Aiple	2nd (11.36) ... 2nd (11.46)

<b>Aces Per Set</b>	
Shelby Sullivan	5th (0.37)

<b>Blocks Per Set</b>	
Jazzmin Babers	3rd (1.34) ..... 3rd (1.37)
Shelby Sullivan	14th (1.04)

<b>Digs Per Set</b>	
Amy Nettles	10th (3.69) .....

<b>Points Per Set</b>	
Jazzmin Babers	6th (3.97) ..... 4th (4.31)
Shelby Sullivan	11th (3.54)

## A&M IN NATIONAL STATISTICAL RANKINGS

Team Rankings (top 75)	Ranking
<b>Category</b>	
Hitting percentage	10th (.281)
Assists per set	40th (12.99)
Kills per set	40th (13.93)
Blocks per set	58th (2.41)

Individual Rankings (top 125)	Ranking
<b>Name</b>	
Jazzmin Babers	hitting pct. .... 6th (.435)
Stephanie Aiple	assists per set ..... 16th (11.36)
Jazzmin Babers	blocks per set ..... 29th (1.34)
Shelby Sullivan	hitting pct. .... 51st (.374)

(Through Oct. 25, 2015)

# 2015 TEXAS A&M VOLLEYBALL

played in Knoxville.

- The Aggies have won the last four meetings, including three consecutive sweeps, to lead 4-1 in SEC matches only.
- In the most recent meeting (Nov. 16, 2014), A&M defeated the Volunteers, 25-21, 25-14, 25-23 at Reed Arena. Setter **Kaysie Shebeneck**, who drew the starting nod while **Stephanie Aiple** rested after making 21 consecutive starts, directed the Aggie offense to a .312 hitting percentage with 38 assists. Opposite hitter **Ashlie Reasor** led all players with 10 kills while hitting .381, and outside hitter **Emily Hardesty** and middle blocker **Jazzmin Babers** added nine kills apiece for the Aggies. **Babers** tied **Shebeneck** with six blocks as A&M held the Lady Vols to a .164 hitting efficiency. Libero **Amy Nettles** had a match-high 14 digs, and Hardesty and outside hitter **Angela Lowak** added 13 and 11 digs, respectively. Kanisha Jimenez and Ashley Mariani led the Lady Vols with eight kills each, and Jimenez also took team-high honors in digs with 12.

- A&M's records/results vs. Tennessee:  
**Overall: 6-6 H: 2-2 A: 3-3 N: 0-1 SEC: 3-1**

Nov.12-13,1982	A	L	8-15,15-12,16-14,6-15,8-15
Oct. 7, 1983	H	L	1-15, 13-15, 7-15
Oct. 14, 1983	N	L	12-15, 10-15, 14-16
Nov. 2, 1985	A	W	15-6, 15-6, 15-5
Oct. 31, 1987	A	L	14-16, 13-15, 9-15
Oct. 29, 1994	H	W	15-0, 15-4, 15-10
Dec. 4, 2004	A	L	21-30, 30-24, 23-30, 30-32
Oct. 19, 2012	H	L	21-25, 19-25, 21-25
Nov. 21, 2012	A	W	15-25,25-22,25-20,27-29,15-9
Nov. 15, 2013	H	W	25-17, 25-14, 25-10
Oct. 23, 2014	A	W	25-14, 25-21, 25-15
Nov. 16, 2014	H	W	25-21, 25-14, 25-23

## SCOUTING TENNESSEE

- Tennessee enters a Friday home contest against LSU 19-6 overall — including 8-1 in home matches — and in sixth place in the SEC standings with a 5-5 mark.
- The Volunteers, who were picked to finish last in the SEC according to a preseason vote of the league's head coaches, have already more than doubled their total number of wins last season when they went 8-24 overall and finished last in the SEC with a 1-17 record.
- In its most recent outing, Tennessee overcame a 2-0 deficit to defeat Mississippi State, 3-2 (17-25, 23-25, 26-24, 25-16, 15-7) in Starkville, Miss. Raina Hembry led the Vols with 13 kills while hitting .500. Libero Bridgette Villano had a team-high 25 digs, and Erica Treiber tied for match-high honors with seven blocks as Tennessee outhit the Bulldogs, .212 to .137.

- Tennessee has four players averaging more than two kills per set, including Jimenez, who leads the Vols with 2.99 kills per set.
- Erica Treiber, a 6-1 freshman middle hitter, ranks ninth in the SEC with a .345 hitting efficiency and is seventh in the league with 1.12 blocks per set for the full season.

## TEXAS A&M RECENT RESULTS

- Texas A&M won its fourth consecutive match and closed out a three-match homestand with its third consecutive sweep, defeating LSU, 25-19, 25-22, 25-18, Wednesday, Oct. 21, at Reed Arena.
- Aggie sophomore outside hitter **Kiara McGee** paced A&M with a match-high 13 kills, her season high for a three-set match. Junior redshirt middle blocker **Jazzmin Babers** added 12 kills, and senior middle blocker **Shelby Sullivan** pitched in 10 kills while hitting .529. Sophomore setter **Stephanie Aiple** dished out 40 assists as the Aggies led LSU, 45-31, in kills and outhit the Tigers, .376 to .103.
- A&M also outblocked the Tigers, 11-7, with **Babers** tallying eight blocks, tying the team season high for a three-set match. Sophomore libero **Amy Nettles** tied for match-high honors in digs with 11, as A&M outdug the Tigers, 46-39.
- Gina Tillis led the Tigers with 8 kills.

## UPCOMING

- The Aggies return to Reed Arena for a two-match homestand, hosting Missouri on Wed., Nov. 4 and Georgia on Sun., Nov. 8.

## SULLIVAN SENIOR CLASS AWARD CANDIDATE

- Texas A&M middle blocker Shelby Sullivan has been selected as a candidate for the Senior CLASS Award for volleyball. An acronym for Celebrating Loyalty and Achievement for Staying in School, the Senior CLASS Award focuses on the total student-athlete and encourages students to use their platform in athletics to make a positive impact as leaders in their communities.
- From Richardson, Texas, Sullivan is one of 30 candidates representing NCAA Division I volleyball student-athletes who were selected based on their notable achievements in four areas: competition, classroom, character and community.
- In the classroom, the 2014 SEC Scholar Athlete of the Year for volleyball sports a 3.841 cumulative grade-point average as a student in Texas A&M's highly regarded Mays Business School five-year Professional Program in which she is simultaneously

earning a bachelor's degree in accounting and a master's degree in finance.



## TEXAS A&M CAREER RECORDS

### TOTAL BLOCKS

1.	Cindy Lothspeich.....	1994-97	552
2.	Amber Woolsey.....	1996-99	547
3.	Sherri Brinkman *.....	1983-85	490
4.	Kelli Kellen.....	1986-89	484
5.	Kim Mitchell.....	1990-93	470
6.	Lindsey Miller.....	2009-12	462
7.	Melissa Munsch.....	2001-04	441
8.	Margaret Spence.....	1983-86	390
9.	<b>JAZZMIN BABERS.....</b>	<b>2013-PRESENT</b>	<b>372</b>
10.	Amy Cumings.....	1987-90	366

### BLOCK ASSISTS

1.	Cindy Lothspeich.....	1994-97	456
2.	Amber Woolsey.....	1996-99	451
3.	Lindsey Miller.....	2009-12	409
4.	Kim Mitchell.....	1990-93	393
5.	Melissa Munsch.....	2001-04	392
6.	<b>JAZZMIN BABERS.....</b>	<b>2013-PRESENT</b>	<b>326</b>
7.	Kelli Kellen.....	1986-89	303
8.	Tara Pulaski.....	1999-03	298
	Sherri Brinkman *.....	1983-85	298
10.	Kendra Felder.....	2001-05	288

### POINTS – RALLY

(Since 2001 Season)

1.	Laura Jones.....	2002-05	2,346.5
2.	Melissa Munsch.....	2001-04	1,870.0
3.	Sarah Ammerman.....	2006-09	1,708.5
4.	Mary Batis.....	2006-09	1,619.0
5.	Lindsey Miller.....	2009-12	1,296.5
6.	Alisia Kastmo.....	2009-12	1,166.0
7.	Kelsey Black.....	2008-11	1,161.5
8.	Christi Hahn.....	2003-06	1,134.5
9.	<b>SHELBY SULLIVAN.....</b>	<b>2012-PRESENT</b>	<b>1,059.5</b>
10.	Kendra Felder.....	2001-05	973.0

### HITTING PERCENTAGE

1.	<b>SHELBY SULLIVAN*.....</b>	<b>2012-PRESENT</b>	<b>.378</b>
2.	<b>JAZZMIN BABERS*.....</b>	<b>2013-PRESENT</b>	<b>.371</b>
3.	Sherri Brinkman.....	1983-85	.342
4.	Christi Hahn.....	2003-06	.333
5.	Amber Woolsey.....	1996-99	.328
6.	Lauri Leahy.....	1996-99	.325
7.	Lindsey Miller.....	2009-12	.311
8.	Tara Pulaski.....	2000-03	.307
9.	Chemine Doty.....	1983-84	.303
10.	Cindy Lothspeich.....	1994-97	.288

\*Active

# 2015 TEXAS A&M VOLLEYBALL — PLAYER PROFILES

## 1

### KATELYN LABHART

5-10 • DS • Jr-2L • Whitesboro, Texas (Whitesboro)

#### HONORS:

##### 2014:

- Texas A&M Most Improved Player Award
- SEC Fall Academic Honor Roll

##### 2013:

- SEC First-Year Academic Honor Roll

#### 2015 NOTES:

- Has appeared in eight matches and is averaging 1.21 digs per set
- Made first start of the season against Florida A&M on Sept. 19
- Her five aces against Florida A&M is the most by an A&M player this season

Category	2015 Season High	Career High
Kills	0	1 vs. Georgia (10/24/14)
Attempts	1 vs. Milwaukee (9/11); Iowa (9/12)	1 four times
Hit% (min. 10 k)	n/a	n/a
Assists	3 vs. Milwaukee (9/11)	5 vs. LSU (11/6/14)
Aces	5 at Florida A&M (9/19)	same
Digs	7 vs. Milwaukee (9/11)	13 vs. Georgia (10/24/14); vs. Kentucky (10/26/14)
Blk Solos	0	0
Blk Assists	0	0
Total Blocks	0	0
Points	5.0 at Florida A&M (9/19)	same

## 2

### SHELBY SULLIVAN

6-2 • MB • Sr-3L • Richardson, Texas (J.J. Pearce)

#### HONORS:

##### 2015

- SEC Offensive Player of the Week (10/19)
- Preseason All-SEC Team
- Senior CLASS Award Candidate

##### 2014

- AVCA Honorable Mention All-America
- AVCA All-South Region Team
- All-SEC Team
- SEC Scholar-Athlete of the Year
- CoSIDA/Capital One Academic All-District Second Team
- Texas A&M Class of 2016 Class Stars Award (Academics)
- USC Classic All-Tournament Team
- Ohio/Baymont Inn & Suites Invitational All-Tournament Team
- Preseason All-SEC Team
- SEC Fall Academic Honor Roll

##### 2013

- AVCA All-South Region Honorable Mention
- All-SEC Team
- Texas A&M Best Offensive Player Award
- Fall SEC Academic Honor Roll

##### 2012

- SEC First-Year Academic Honor Roll

#### 2015 NOTES

- Entered the week ranked eighth in the SEC and 51st in the nation with a .374 hitting percentage for the full season
- In SEC matches only, is fifth in the league in hitting percentage (.393), fifth in aces per set (0.37), 11th in points per set (3.54) and 14th in blocks per set (1.04)
- In home matches only, is hitting a team-leading .473 and averaging a team-high 3.94 points per set while also averaging 3.04 kills and 1.21 blocks per set.
- Had appeared in 64 consecutive matches, having started 63 of them, until she suffered an injury against Wichita State on Sept. 5 and missed the next two matches.
- Against Wichita State, had posted 14 kills and was hitting .765 before suffering the knee injury early in the third set
- Her 14 kills against the Shockers ties the A&M season high in a three-set match, and her .765 also ties the team high this season
- Has posted double-figure kills in seven matches
- Named SEC Offensive Player of the Week on Oct. 19 after recording back-to-back double-figure kill performances while hitting a combined .462 and averaging a team-leading 4.83 points, 3.67 kills and 1.50 blocks per set in the sweeps against Alabama and Mississippi State
- Is hitting .378 for her career and is on pace to break the A&M all-time career

record of .342 set by former two-time All-American Sherri Brinkman (1983-85).

Category	2015 Season High	Career High
Kills	14 vs. Wichita State (9/5)	20 vs. Auburn (9/28/14)
Attempts	27 vs. Minnesota (8/29)	42 vs. UTSA (8/30/14)
Hit% (min. 10 k)	.765 [14-1-17] vs. Wichita State (9/5)	.826 [20-1-23] vs. Auburn (9/28/14)
Assists	2 three times	6 at Mississippi State (11/26/14)
Aces	3 at Auburn (9/30)	5 vs. Lamar (9/5/13)
Digs	9 vs. Milwaukee (9/11)	11 at Mississippi State (11/26/14)
Blk Solos	2 vs. Colorado State (9/15)	3 three times
Blk Assists	6 at South Carolina (10/10); vs. Alabama (10/16)	7 vs. Mississippi State (10/11/13)
Total Blocks	6 three times	7 four times
Points	16.5 vs. Wichita State (9/5)	25.0 vs. Auburn (9/28/14)

## 3

### PAIGE PANTER

5-11 • DS • Fr-HS • Southlake, Texas (Southlake Carroll)

#### 2015 NOTES

- Has appeared in seven matches
- Made her first career start against Arkansas on Sept. 27 as a defensive specialist and played in all four sets
- Had five kills and four digs in two sets played against Abilene Christian on Sept. 5.
- Celebrated her 19th birthday on Thursday, Oct. 15

Category	2015 Season High	Career High
Kills	5 vs. Abilene Christian (9/5)	same
Attempts	13 vs. Abilene Christian (9/5)	same
Hit% (min. 10 k)	n/a	same
Assists	1 at Florida A&M (9/19)	same
Aces	0	same
Digs	4 vs. Abilene Christian (9/5)	same
Blk Solos	0	same
Blk Assists	0	same
Total Blocks	0	same
Points	5.0 vs. Abilene Christian (9/5)	same

## 4

### KIARA MCGEE

5-11 • OH • So-1L • San Antonio, Texas (Taft)

#### HONORS:

##### 2015

- SEC Offensive Player of the Week (10/26)
- Texas A&M Invitational All-Tournament Team

#### 2015 NOTES

- Is the reigning SEC Offensive Player of the Week after posting a match-high 13 kills while hitting .476 — a career high when posting 10 or more kills — in A&M's sweep against LSU on Oct. 21
- Has played in 18 of 19 matches, starting 15
- Is hitting .208 and is second on the team among active players with 2.71 kills and 3.06 points per set for the full season
- In SEC matches only is hitting .253 and averaging 2.84 kills and 3.18 points per set
- In home matches only, is hitting .275 with a team-leading 3.42 kills per set
- Drew the first start of her career against Minnesota in the second match of the season
- Has recorded two double-doubles, including 13 kills and 14 digs against Minnesota on Aug. 29 to record the first double-double of her career
- Posted a career-high 20 kills in a 3-2 win against New Mexico State
- Has recorded double-figure kills in seven matches and double-digit digs in three matches
- Has led or tied for the team lead in kills in five matches
- Named to the Texas A&M Invitational All-Tournament Team after averaging 3.60 kills, 2.20 digs and 3.90 points per set.

Category	2015 Season High	Career High
Kills	20 vs. New Mexico State (9/6)	same
Attempts	51 vs. New Mexico State (9/6)	same
Hit% (min. 10 k)	.476 (13-3-21) vs. LSU (10/21)	same
Assists	1 three times	same
Aces	4 vs. Minnesota (8/29)	same
Digs	14 vs. Minnesota (8/29)	same
Blk Solos	1 at Auburn (9/30); vs. LSU (10/21)	2 vs. VCU (9/6/14)
Blk Assists	5 vs. New Mexico State (9/6)	same
Total Blocks	5 vs. New Mexico State (9/6)	same
Points	22.5 vs. New Mexico State (9/6)	same

# 2015 TEXAS A&M VOLLEYBALL — PLAYER PROFILES

## 5

### AMY NETTLES

5-4 • L/DS • So-1L • San Antonio, Texas (Churchill)

#### HONORS:

##### 2014

- Texas A&M Best Defensive Player Award
- SEC Defensive Player of the Week (Oct. 27)

#### 2015 NOTES:

- Is averaging a team-leading 3.69 digs per set for the full season, ranking 10th in the SEC
- Is averaging a team-leading 3.44 digs per set in SEC matches only
- Has been A&M's libero in every set this season and is the only player to appear in all 71 sets
- Has led or tied for the team high in digs in all but two matches
- Has posted double-figure digs in 15 of 19 matches
- In home matches only, is averaging 4.12 digs per set
- Is the only player to reach 20 or more digs in a match this season, posting a season-high and tying her career high with 27 in the 3-2 win against No. 15 Colorado State and notching 20 digs in a 3-1 win against Milwaukee

Category	2015 Season High	Career High
Kills	1 at Florida (10/9); vs. Mississippi State (10/18)	1 four times
Attempts	3 at Stanford (8/28); at Florida State (9/18)	same
Hit% (min. 10 k)	n/a	n/a
Assists	4 three times	5 vs. Kentucky (10/26/15)
Aces	2 vs. Wichita State (9/5); at South Carolina (10/10)	2 four times
Digs	27 vs. Colorado State (9/15) ..... 27 at Alabama (10/31/15); vs. Colorado State (9/15/15)	same
Blk Solos	0	same
Blk Assists	0	same
Total Blocks	0	same
Points	2.0 four times	2.0 six times

## 7

### MONTSE CASTRO

6-7 • OH/MB • Fr-HS • Mexico City, Mexico

#### 2015 NOTES

- Has not appeared in a match
- Was gone two weeks in September while competing for Mexico national team at the Women's U20 World Championships in Puerto Rico
- Arrived on campus August 23 and appeared in her first practice Aug. 25, three days before A&M's season opener

#### PREVIOUS ATHLETIC EXPERIENCE:

- A member of the 2014 and 2015 Mexico U20 National Team
- Competed at the 2014 NORCECA U20 in Guatemala and took fourth place
- Competed at the 2015 Panam Cup U20 in the Dominican Republic and placed fourth

Category	2015 Season High	Career High
Kills	.....	same
Attempts	.....	same
Hit% (min. 10 k)	.....	same
Assists	.....	same
Aces	.....	same
Digs	.....	same
Blk Solos	.....	same
Blk Assists	.....	same
Total Blocks	.....	same
Points	.....	same

## 8

### ANGELA LOWAK

6-0 • OH • Sr-3L • New Braunfels, Texas (New Braunfels)

#### HONORS:

##### 2014

- MVP, Texas A&M Invitational All-Tournament Team
- CoSIDA/Haier Achievement Award
- SEC Community Service Team
- Coach Wooden Citizen Cup semifinalist
- NCAS PlayMaker of the Month (Nov.)
- Texas A&M Aggie Excellence Award
- Texas A&M Class of 2016 Class Stars Award (Service)
- SEC Fall Academic Honor Roll
- Mays Business School Student Spotlight of the Month (May 2015)

##### 2013

- SEC Volleyball Community Service Team
- Texas A&M Invitational All-Tournament Team
- UTSA Classic All-Tournament Team
- Fall SEC Academic Honor Roll

##### 2012

- SEC First-Year Academic Honor Roll

#### 2015 NOTES:

- Is out indefinitely after suffering a dislocated patella at Florida State on Sept. 18
- The co-captain had played in seven matches, starting five, and was leading the team with 3.22 kills per set before suffering the injury
- Was hitting .287 and ranked second on the team with 3.48 points per set
- Suffered an ankle injury against Minnesota in the second match of the season and did not play in the following three matches
- Posted double-figure kills in four consecutive matches and five overall leading into the FSU match
- Recorded her first double-double of the season with 16 kills and 14 digs - both season highs - in the 3-2 win against No. 15 Colorado State

Category	2015 Season High	Career High
Kills	16 vs. Colorado State (9/15)	23 at Georgia (11/24/13)
Attempts	37 vs. Colorado State (9/15) ..... 57 vs. LMU (9/5/13); at Georgia (11/24/13)	same
Hit% (min. 10 k)	.375 [13-4-25] at Stanford (8/28)	.600 [10-1-15] vs. Lamar (9/5/13)
Assists	1 four times	5 vs. UTSA (12/5/13)
Aces	2 at Iowa (9/12)	4 vs. Alabama (10/10/14)
Digs	14 vs. Colorado State (9/15)	23 vs. UTSA (8/30/14)
Blk Solos	1 vs. Iowa State (9/11) ..... 2 at Alabama (9/30/12); vs. S. Dakota State (8/30/13)	same
Blk Assists	1 four times	5 vs. San Diego (9/12/14); vs. Florida State (9/19/14)
Total Blocks	1 five times	5 vs. San Diego (9/12/14); vs. Florida State (9/19/14)
Points	17.5 vs. Colorado State (9/15)	23.0 at Georgia (11/24/13)

## 10

### MARGARET CONNETT

6-0 • OH • Fr-HS • The Woodlands, Texas (The John Cooper School)

#### 2015 NOTES

- Made the first and only appearance of her career at Florida A&M on Sept. 19 and posted two kills

Category	2015 Season High	Career High
Kills	2 at Florida A&M (9/19)	same
Attempts	3 at Florida A&M (9/19)	same
Hit% (min. 10 k)	n/a	same
Assists	0	same
Aces	0	same
Digs	0	same
Blk Solos	0	same
Blk Assists	0	same
Total Blocks	0	same
Points	2.0 at Florida A&M (9/19)	same



# 2015 TEXAS A&M VOLLEYBALL — PLAYER PROFILES

## 11 AMY HOUSER

5-8 • DS/S • Fr-HS • Houston, Texas (Memorial)

### 2015 NOTES

- Has appeared in 12 matches and 30 sets
- Has started six matches, including five of the last seven
- Typically plays back row in place of opposite hitter Ashlie Reasor
- Drew the first start of her career in the season opener at No. 2 Stanford
- Is averaging 1.60 digs per set

Category	2015 Season High	Career High
Kills	0	same
Attempts	0	same
Hit% (min. 10 k)	n/a	same
Assists	2 three times	same
Aces	2 vs. Iowa State (9/11); vs. Mississippi State (10/18)	same
Digs	9 at South Carolina (10/10)	same
Blk Solos	0	same
Blk Assists	0	same
Total Blocks	0	same
Points	2.0 vs. Iowa State (9/11); vs. Mississippi State (10/18)	same

## 12 EMILY HARDESTY

6-3 • OH • Jr-2L • Plano, Texas (Trinity Christian Academy)

### HONORS:

#### 2015

- Texas A&M Invitational All-Tournament Team

#### 2014

- MVP, Ohio/Baymont Inn & Suites Invitational
- SEC Fall Academic Honor Roll

#### 2013

- SEC First-Year Academic Honor Roll

### 2015 NOTES:

- Has played in every match - starting 16 - and appeared in 69 of 71 sets
- Is hitting .228 and averaging 1.96 kills, 2.35 digs and 2.28 points per set
- Has posted double-figure kills four times this season
- Has led the team in kills in four matches, including a team-high 17 in A&M's 3-2 victory over No. 15 Colorado State
- Also had a season-high 15 digs against Colorado State to record her first double-double of the season
- Has twice taken team-high honors for digs
- Is tied for the team lead with three double-doubles
- Is the only non-setter who regularly plays all six rotations
- Leads the team with 499 service receptions

Category	2015 Season High	Career High
Kills	18 vs. Abilene Christian (9/5)	same
Attempts	37 vs. Abilene Christian (9/5)	40 vs. TAMU-Corpus Christi (9/22/14)
Hit% (min. 10 k)	.324 [18-6-37] vs. Abilene Christian (9/5)	.529 [10-1-17] vs. Missouri (11/23/14)
Assists	3 vs. Colorado State (9/15); vs. Alabama (10/16)	6 vs. Arkansas (10/25/13)
Aces	3 vs. New Mexico State (9/6)	same
Digs	15 vs. Colorado State (9/15)	20 at Alabama (10/31)
Blk Solos	1 three times	1 five times
Blk Assists	4 vs. Abilene Christian (9/5)	4 six times
Total Blocks	4 vs. Abilene Christian (9/5)	4 six times
Points	21.0 vs. Abilene Christian (9/5)	same

## 13 GABBY LITWIN

5-8 • DS • RS-So-TR • Allen, Texas (Plano East/Mississippi State)

### 2015 NOTES

- Has appeared in 11 matches and 30 sets overall
- After having appeared in only seven sets over the first 12 matches, has played in every set over the last seven matches
- Typically plays back row for outside hitter Kiara McGee
- Reached double-figure digs for the first time with 10 in the 3-2 win at South Carolina
- Is averaging 1.87 digs per set

Category	2015 Season High	Career High
Kills	0	same
Attempts	1 at South Carolina (10/10)	same
Hit% (min. 10 k)	n/a	same
Assists	2 at Florida State (9/18); vs. Ole Miss (10/4)	same
Aces	2 vs. Ole Miss (10/4)	same
Digs	10 at South Carolina (10/10)	same
Blk Solos	0	same
Blk Assists	0	same
Total Blocks	0	same
Points	2.0 vs. Ole Miss (10/4)	same

## 14 VICTORIA ARENAS

5-6 • DS • Jr-2L • Cypress, Texas (Cypress Woods)

### HONORS:

#### 2014

- SEC Fall Academic Honor Roll

#### 2013

- SEC Fall Academic Honor Roll

### 2015 NOTES:

- Has appeared in 10 matches and 29 sets overall
- Made her only start in the 3-2 victory against Minnesota in the second match of the season
- Appeared in all three sets against LSU and had an ace and seven digs
- Is averaging 1.76 digs per set

Category	2015 Season High	Career High
Kills	1 vs. Arkansas (9/27)	1 three times
Attempts	1 vs. Arkansas (9/27)	2 at Florida (10/4/13); at Ohio (9/5/14)
Hit% (min. 10 k)	n/a	same
Assists	2 vs. Minnesota (8/29); vs. Wichita State (9/5)	4 three times
Aces	1 vs. LSU (10/21)	1 eleven times
Digs	10 vs. Arkansas (9/27)	28 vs. UTSA (8/30/14)
Blk Solos	0	same
Blk Assists	0	same
Total Blocks	0	same
Points	1.0 vs. Arkansas (9/27); vs. LSU (10/21)	1.0 fourteen times

## 15 ASHLIE REASOR

6-1 • OPP • So-1L • San Antonio, Texas (Reagan)

### HONORS:

#### 2014

- AVCA All-South Region Honorable Mention
- SEC All-Freshman Team
- Texas A&M Invitational All-Tournament Team

### 2015 NOTES:

- Has appeared in 18 of 19 matches— starting seven — and 52 of 71 sets while sharing time with freshman Kaitlyn Blake
- Is hitting .217 with 2.04 kills and 2.47 points per set for the full season and .248 with 2.28 kills and 2.68 points per set in SEC play only
- Has reached double figures in kills three times this season, including in two of the last four matches
- Over the last four matches, is hitting .387 with 3.00 kills, 0.79 blocks and 3.39 points per set
- Came off the bench against No. 15 Colorado State and hit .529 with nine kills without an error and added five blocks to spur the Aggies to the 3-2 victory

Category	2015 Season High	Career High
Kills	19 at South Carolina (10/10)	same
Attempts	40 vs. Abilene Christian (9/5)	same
Hit% (min. 10 k)	.615 [19-3-26] at South Carolina (10/10)	same
Assists	1 three times	3 vs. TAMU-CC (9/22/14)
Aces	2 vs. Abilene Christian (9/5)	2 three times
Digs	5 vs. Minnesota (8/29); vs. Abilene Christian (9/5)	15 at Kentucky (10/5/14)
Blk Solos	1 at Florida A&M (9/19)	1 at Missouri (11/2/14); at Florida A&M (9/19/15)
Blk Assists	6 vs. Ole Miss (10/4)	9 vs. UTSA (8/30/14)
Total Blocks	5 vs. Colorado State (9/15)	9 vs. UTSA (8/30/14)
Points	20.0 at South Carolina (10/10)	same

# 2015 TEXAS A&M VOLLEYBALL — PLAYER PROFILES

# 16

## KAITLYN BLAKE

6-2 • MB/OPP • Fr-HS • Allen, Texas (Allen)

### 2015 NOTES

- Has appeared in 15 of 19 matches and played in 45 of 71 sets
- Has started seven matches overall, starting four at the opposite hitter position and three at the middle blocker position
- Drew the first start of her career against Wichita State as an opposite hitter
- Is hitting .261 and averaging 2.00 kills, 0.76 blocks and 2.41 points per set
- Has recorded 10 or more kills three times
- Was one block shy of posting the first double-double of her career after recording 11 kills and nine blocks in the 3-2 victory against New Mexico State

Category	2015 Season High	Career High
Kills	14 vs. Iowa State (9/11)	same
Attempts	30 at Iowa (9/12)	same
Hit% (min. 10 k)	.346 [11-2-26] vs. New Mexico State (9/6)	same
Assists	2 at Stanford (8/28)	same
Aces	0	same
Digs	3 at South Carolina (10/10)	same
Blk Solos	1 three times	same
Blk Assists	8 vs. New Mexico State (9/6)	same
Total Blocks	9 vs. New Mexico State (9/6)	same
Points	16.0 vs. New Mexico State (9/6)	same

# 17

## KAYSIE SHEBENECK

6-1 • S/OPP • Jr-2L • Racine, Wis. (Burlington)

### HONORS:

#### 2014

- Texas A&M Most Inspirational Player Award
- SEC Fall Academic Honor Roll

#### 2013

- SEC First-Year Academic Honor Roll

### 2015 NOTES:

- Started three matches while setter Stephanie Aiple was out with a foot injury
- Came off the bench in the second set against No. 15 Colorado State after Aiple went down with the foot injury and directed the Aggies to a 3-2 victory
- Directed the Aggies to a .500 team hitting percentage against Florida A&M, marking the third highest hitting percentage in program history
- Has appeared in seven matches and 17 sets overall
- Most recent appearance was against Arkansas on Sept. 27
- Is averaging 8.88 assists per set
- Posted the first double-double of her career with 29 assists and 11 digs in two sets against Abilene Christian (9/5)

Category	2015 Season High	Career High
Kills	4 at Florida State (9/18); Florida A&M (9/19)	8 vs. Michigan (9/13/13)
Attempts	9 at Florida State (9/18); Florida A&M (9/19)	23 vs. Michigan (9/13/13)
Hit% (min. 10 k)	n/a	same
Assists	38 at Florida State (9/18)	43 vs. UTSA (8/30/14)
Aces	1 at Florida A&M (9/19)	1 five times
Digs	11 vs. Abilene Christian (9/5)	same
Blk Solos	0	1 three times
Blk Assists	2 vs. ACU (9/5); vs. Arkansas (9/27)	6 vs. Michigan (9/13/13); vs. Tennessee (11/16/14)
Total Blocks	2 vs. ACU (9/5); vs. Arkansas (9/27)	6 vs. Michigan (9/13/13); vs. Tennessee (11/16/14)
Points	5.5 at Florida A&M (9/19)	11.0 vs. Michigan (9/13/13)

# 22

## JAZZMIN BABERS

6-2 • MB • RS-Jr-2L • Bowling Green, Ohio (Midway-Waco, Texas)

### HONORS:

#### 2015

- SEC Player of the Week (10/5)
- SEC Defensive Player of the Week (10/5)
- SEC Defensive Player of the Week (9/8)
- MVP, Texas A&M Invitational
- Comfort Suites Challenge All-Tournament Team

#### 2014

- AVCA Honorable Mention All-America
- AVCA All-South Region Team
- All-SEC Team
- Texas A&M Co-Best Offensive Player Award
- SEC Fall Academic Honor Roll

#### 2013:

- AVCA All-South Region Honorable Mention
- SEC All-Freshman Team
- Texas A&M Most Improved Player Award
- SEC Freshman of the Week (11/18)
- SEC Defensive Player of the Week (9/16)
- Texas A&M Invitational All-Tournament Team
- SEC Defensive Player of the Week (9/16)
- Texas A&M Invitational All-Tournament Team Category

### 2015 NOTES:

- Has started every match (80) of her career
- Entered the week ranked sixth in the nation and second in the SEC with a .435 hitting efficiency in all matches
- Also entered the week ranked 29th in the nation and third in the SEC with 1.34 blocks per set
- In SEC matches only, leads the league with a .500 hitting efficiency
- In SEC matches only, leads A&M and ranks third in the SEC in blocks (1.37), fourth in points (4.31) and sixth in kills (3.56) per set
- Leads A&M's active players with 3.17 kills per set for the full season, ranking ninth in the SEC
- Has posted double-figure kills in a team-leading 11 matches, including in five of the last seven matches
- Has recorded 20 or more kills three times this season, including a team season-high and career-high 23 kills in the 3-2 win at South Carolina on Oct. 11
- Had 20 kills and 10 digs against New Mexico State for her first double-double of the season and the second of her career
- Has led or tied for the team lead in kills in a team-leading seven matches and in blocks in a team-leading 15 matches
- Twice has posted 10 blocks in a match this season
- Tied the A&M SEC record for hitting percentage when making 15-19 attempts in a match after hitting .765 with 13 kills and only one error in 17 attempts at Auburn on Sept. 30
- Ranks sixth in the A&M career records with 326 block assists and needs 67 more to move into fifth
- Is ninth in the A&M career records with 372 total blocks and needs 19 more to move into eighth

Category	2015 Season High	Career High
Kills	23 at South Carolina (10/10)	same
Attempts	37 vs. New Mexico State (9/6); at South Carolina (10/10)	same
Hit% (min. 10 k)	.765 [14-1-17] at Auburn (9/30); .765 [13-0-17] at Arkansas (11/19/14); [14-1-17] at Auburn (9/30/15)	same
Assists	2 vs. Colorado State (9/15)	3 four times
Aces	1 vs. Abilene Christian (9/5); vs. New Mexico State (9/6)	same
Digs	4 vs. Abilene Christian (9/5); vs. Milwaukee (9/11)	5 vs. Michigan (9/13/13)
Blk Solos	3 vs. Colorado State (9/15)	3 four times
Blk Assists	8 vs. New Mexico State (9/6); at Auburn (9/30)	13 vs. UTSA (8/30/14)
Total Blocks	10 vs. New Mexico State (9/6); vs. Colorado State (9/15)	14 vs. UTSA (8/30/14)
Points	27.0 vs. New Mexico State (9/6)	same

# 2015 TEXAS A&M VOLLEYBALL — PLAYER PROFILES

**23** **STEPHANIE AIPL**  
6-1 • S • So-1L • Round Rock, Texas (Round Rock)

## HONORS:

### 2015

- Two-time reigning SEC Setter of the Week (10/19, 10/26)
- PrepVolleyball.com Setter of the Week (9/8)

### 2014

- AVCA Honorable Mention All-America
- AVCA All-South Region Team
- AVCA South Region Freshman of the Year
- SEC All-Freshman Team
- Texas A&M Co-Best Offensive Player Award
- ESPNW National Player of the Week (9/17)
- 3-time SEC Freshman Player of the Week (9/8, 9/15, 11/24)
- USC Classic All-Tournament Team
- Ohio/Baymont Inn & Suites Invitational All-Tournament Team
- Texas A&M Class of 2018 Class Stars Award (Athletics)

## 2015 NOTES:

- Is the two-time reigning SEC Setter of the Week
- Over the last two weeks, has is averaging 12.89 assists per set and has directed the A&M offense to a .367 hitting efficiency and three consecutive sweeps
- Entered the week ranked 16th in the nation and second in the SEC with 11.36 assists per set for the full season
- Also is second in the SEC with 11.46 assists per set in conference matches only
- Runs an A&M offense that entered the week ranked 10th in the nation with a .281 team hitting efficiency
- Started the first nine matches of the season before suffering a foot injury against No. 15 Colorado State on Sept. 15, forcing her to miss the next two matches
- Returned to action in the second set against Arkansas on Sept. 27
- Returned to the starting lineup at Auburn on Sept. 30
- Is tied with Hardesty for the team lead in double-doubles with three
- Set a career-high and a Reed Arena record with 60 assists in the five-set win against New Mexico State
- Has tallied 50 or more assists in five matches this season
- Directed the A&M offense to a .481 hitting percentage against Auburn, an A&M team record for hitting percentage in an SEC three-set match

Category	2015 Season High	Career High
Kills	5 vs. Milwaukee (9/11); at Auburn (9/30)	8 vs. San Diego (9/12/14)
Attempts	9 at Auburn (9/30); vs. Ole Miss (10/4)	14 vs. San Diego (9/12/14)
Hit% (min. 10 k)	n/a	same
Assists	60 vs. New Mexico State (9/6)	same
Aces	2 vs. Wichita State (9/5)	2 three times
Digs	14 vs. New Mexico State (9/6)	15 vs. TAMU-CC (9/22/14)
Blk Solos	1 vs. Abilene Christian (9/5)	1 at Alabama (10/31/14); vs. Abilene Christian (9/5/15)
Blk Assists	5 vs. New Mexico State (9/6)	same
Total Blocks	5 vs. New Mexico State (9/6)	same
Points	7.0 at Auburn (9/30)	9.5 vs. LSU (11/6/14)

## 2015 INDIVIDUAL PERFORMANCES

**Triple-doubles:** none  
**Double-doubles:** Aiple-3; Hardesty-3; McGee-2; Babers-1; Lowak-1; Shebeneck-1  
**30+ digs:** none  
**20+ kills:** Babers-3; McGee-1  
**20+ digs:** Nettles-2  
**20 kills-20 digs:** none  
**10+ blocks:** Babers-2  
**Led the team in kills:** Babers-7; McGee-5; Hardesty-3; Sullivan-3; Blake-1; Lowak-1; Reasor-1  
**Led the team in digs:** Nettles-17; Hardesty-2; Aiple-1  
**Led the team in blocks:** Babers-15; Sullivan-5; Blake-3; Aiple-2; Reasor-1; Hardesty-1  
**Led the team in points:** Babers-9; Hardesty-3; Sullivan-3; McGee-2; Sullivan-3; Blake-1; Lowak-1

## MISCELLANEOUS STATS

10+ Kills	2012	2013	2014	2015	Career	Current Streak
Jazzmin Babers	---	5	16	11	32	1
Shelby Sullivan	1	14	19	7	31	3
Kiara McGee	---	---	---	7	7	1
Angela Lowak	---	16	12	5	33	---
Emily Hardesty	---	---	5	4	9	---
Ashlie Reasor	---	---	12	3	15	---
Kaitlyn Blake	---	---	---	3	3	---

10+ Digs	2012	2013	2014	2015	Career	Current Streak
Amy Nettles	---	---	12	15	27	4
Emily Hardesty	---	2	15	7	24	---
Stephanie Aiple	---	---	7	3	10	---
Kiara McGee	---	---	---	3	3	---
Victoria Arenas	---	5	8	1	14	---
Angela Lowak	---	2	9	1	12	---
Kaysie Shebeneck	---	---	---	1	1	---
Gabby Litwin	---	---	---	1	1	---
Katelyn Labhart	---	---	4	---	4	---
Ashlie Reasor	---	---	1	---	1	---
Shelby Sullivan	---	---	1	---	1	---

10+ Blocks	2012	2013	2014	2015	Career	Current Streak
Jazzmin Babers	---	1	1	2	4	---

20+ Kills	2012	2013	2014	2015	Career	Current Streak
Jazzmin Babers	---	---	---	3	3	---
Kiara McGee	---	---	---	1	1	---
Angela Lowak	---	2	0	---	2	---
Shelby Sullivan	---	---	1	---	1	---

20+ Digs	2012	2013	2014	2015	Career	Current Streak
Amy Nettles	---	---	4	2	6	---
Victoria Arenas	---	1	3	---	4	---
Emily Hardesty	---	---	1	---	1	---
Angela Lowak	---	---	1	---	1	---

30+ Digs	2012	2013	2014	2015	Career	Current Streak
none	---	---	---	---	---	---

60+ Assists	2012	2013	2014	2015	Career	Current Streak
Stephanie Aiple	---	---	---	1	1	---

Triple-Doubles	2012	2013	2014	2015	Career	Current Streak
none	---	---	---	---	---	---

Double-Doubles	2012	2013	2014	2015	Career	Current Streak
Stephanie Aiple	---	---	7	3	10	---
Emily Hardesty	---	---	3	3	6	---
Kiara McGee	---	---	---	2	2	---
Jazzmin Babers	---	---	1	1	2	---
Kaysie Shebeneck	---	---	---	1	1	---
Angela Lowak	---	2	4	1	7	---

## 2015 TEXAS A&M SEASON STATS -- ALL MATCHES

Overall record: 13-6 Conf: 6-2 Home: 8-1 Away: 3-4 Neutral: 2-1

#	Player	sp	Attack				Set		Serve			Dig			Blocking					points		
			k	k/s	e	ta	pct	a	a/s	sa	se	sa/s	re	dig	dig/s	bs	ba	total	blk/s		be	bhe
14	Arenas, Victoria	29	1	0.03	0	1	1.000	7	0.24	1	5	0.03	9	51	1.76	0	0	0	0.00	0	0	2.0
10	Connett, Margaret	1	2	2.00	0	3	.667	0	0.00	0	0	0.00	0	0	0.00	0	0	0	0.00	1	0	2.0
22	Babers, Jazzmin	70	222	3.17	50	395	.435	10	0.14	2	2	0.03	3	31	0.44	14	80	94	1.34	6	1	278.0
2	Sullivan, Shelby	62	141	2.27	34	286	.374	11	0.18	13	7	0.21	0	41	0.66	6	42	48	0.77	5	0	181.0
17	Shebeneck, Kaysie	17	12	0.71	1	36	.306	151	8.88	1	4	0.06	0	24	1.41	0	6	6	0.35	1	4	16.0
8	Lowak, Angela	23	74	3.22	23	178	.287	4	0.17	3	2	0.13	3	35	1.52	1	4	5	0.22	1	0	80.0
16	Blake, Kaitlyn	45	90	2.00	33	218	.261	3	0.07	0	0	0.00	0	11	0.24	3	31	34	0.76	5	0	108.5
23	Aiple, Stephanie	58	35	0.60	15	83	.241	659	11.36	5	10	0.09	0	104	1.79	1	38	39	0.67	3	7	60.0
12	Hardesty, Emily	69	135	1.96	44	400	.228	16	0.23	9	6	0.13	26	162	2.35	3	21	24	0.35	0	0	157.5
15	Reasor, Ashlie	52	106	2.04	48	267	.217	3	0.06	2	6	0.04	0	28	0.54	1	39	40	0.77	5	1	128.5
4	McGee, Kiara	59	160	2.71	71	428	.208	3	0.05	9	12	0.15	8	67	1.14	2	19	21	0.36	10	0	180.5
3	Panther, Paige	14	9	0.64	7	24	.083	1	0.07	0	3	0.00	1	9	0.64	0	0	0	0.00	2	0	9.0
13	Litwin, Gabby	30	0	0.00	0	1	.000	7	0.23	3	7	0.10	9	56	1.87	0	0	0	0.00	0	0	3.0
11	Houser, Amy	30	0	0.00	0	0	.000	8	0.27	6	6	0.20	6	48	1.60	0	0	0	0.00	0	0	6.0
5	Nettles, Amy	71	2	0.03	4	17	-.118	32	0.45	10	20	0.14	12	262	3.69	0	0	0	0.00	0	0	12.0
1	Labhart, Katelyn	24	0	0.00	1	2	-.500	7	0.29	6	5	0.25	5	29	1.21	0	0	0	0.00	0	1	6.0
	TEXAS A&M	71	989	13.93	331	2339	.281	922	12.99	70	95	0.99	88	958	13.49	31	280	171.0	2.41	39	14	1230.0
	Opponents	71	927	13.06	376	2439	.226	870	12.25	88	110	1.24	70	871	12.27	25	228	139.0	1.96	42	18	1154.0

Team Statistics	TAMU	OPP
ATTACK		
Kills	989	927
Errors	331	376
Total Attacks	2339	2439
Attack Pct	.281	.226
Kills/Set	13.9	13.1
SET		
Assists	922	870
Attempts	2253	2348
Assist Pct	.409	.371
Assists/Set	13.0	12.3
SERVE		
Aces	70	88
Errors	95	110
Attempts	1578	1475
Serve Pct	.940	.925
Aces/Set	1.0	1.2
SERVE RECEPTIONS		
Errors	88	70
Errors/Set	1.2	1.0
Attempts	1363	1483
Reception Pct	.935	.953
DEFENSE		
Digs	958	871
Digs/Set	13.5	12.3
BLOCKING		
Block Solo	31	25
Block Assist	280	228
Total Blocks	171.0	139.0
Blocks/Set	2.4	2.0
Block Errors	39	42
Ball handling errors	14	18
ATTENDANCE		
Total	13411	6882
Dates/Avg Per Date	9/1490	7/983
Neutral site #/Avg	3/388	-
Current win streak	4	-
Home win streak	4	-

Date	Opponent	Score	Score by set	Att.
Aug 28	at #2 Stanford	L 0-3	19-25,19-25,15-25	1617
Aug 29	vs Minnesota	w 3-2	26-24,21-25,18-25,25-21,15-10	285
+Sep 05	WICHITA STATE	w 3-0	25-12,25-16,25-12	1056
+Sep 05	ABILENE CHRISTIAN	w 3-1	25-14,25-21,26-28,25-20	1056
+Sep 06	NEW MEXICO STATE	w 3-2	27-25,25-21,27-29,16-25,15-9	969
#Sep 11	vs Iowa State	L 1-3	16-25,16-25,25-23,20-25	880
#Sep 11	vs Milwaukee	w 3-1	27-25,18-25,25-20,25-17	0
#Sep 12	at Iowa	L 1-3	23-25,25-20,22-25,22-25	837
Sep 15	#15 COLORADO STATE	w 3-2	25-15,19-25,25-19,21-25,15-11	1177
Sep 18	at #18 Florida State	L 1-3	20-25,12-25,25-21,16-25	786
Sep 19	at Florida A&M	w 3-0	25-13,25-14,25-14	147
*Sep 27	ARKANSAS	L 1-3	25-21,13-25,25-27,22-25	1278
*Sep 30	at Auburn	w 3-0	25-14,25-17,25-21	639
*Oct 04	OLE MISS	w 3-0	25-13,25-20,25-13	1760
*Oct 09	at #17 Florida	L 0-3	9-25,23-25,18-25	2011
*Oct 10	at South Carolina	w 3-2	27-29,25-23,22-25,25-21,15-4	845
*Oct 16	ALABAMA	w 3-0	25-22,25-18,25-21	2782
*Oct 18	MISSISSIPPI STATE	w 3-0	25-19,25-18,25-15	1777
*Oct 21	LSU	w 3-0	25-19,25-22,25-18	1556

+ Texas A&M Invitational, College Station, Texas

# Comfort Suites Challenge, Iowa City, Iowa

Record in 3-set matches:7-2 • Record in 4-set matches:2-4 • Record in 5-set matches:4-0

# 2015 TEXAS A&M SEASON STATS -- SEC MATCHES ONLY

RECORD:	OVERALL	HOME	AWAY	NEUTRAL
ALL GAMES	6-2	4-1	2-1	0-0
CONFERENCE	6-2	4-1	2-1	0-0
NON-CONFERENCE	0-0	0-0	0-0	0-0

#	Player	sp	Attack				Set		Serve			Dig		Blocking					points			
			k	k/s	e	ta	pct	a	a/s	sa	se	sa/s	re	dig	dig/s	bs	ba	total		blk/s	be	bhe
14	Arenas, Victoria	8	1	0.12	0	1	1.000	2	0.25	1	3	0.12	0	22	2.75	0	0	0	0.00	0	0	2.0
22	Babers, Jazzmin	27	96	3.56	20	152	.500	4	0.15	0	0	0.00	0	10	0.37	4	33	37	1.37	3	1	116.5
5	Nettles, Amy	27	2	0.07	0	5	.400	17	0.63	6	9	0.22	3	93	3.44	0	0	0	0.00	0	0	8.0
2	Sullivan, Shelby	27	71	2.63	18	135	.393	6	0.22	10	2	0.37	0	18	0.67	1	27	28	1.04	4	0	95.5
17	Shebeneck, Kaysie	2	2	1.00	0	6	.333	12	6.00	0	0	0.00	0	2	1.00	0	2	2	1.00	1	1	3.0
23	Aple, Stephanie	26	20	0.77	6	44	.318	298	11.46	1	4	0.04	0	41	1.58	0	15	15	0.58	2	4	28.5
16	Blake, Kaitlyn	11	20	1.82	8	47	.255	0	0.00	0	0	0.00	0	4	0.36	0	4	4	0.36	2	0	22.0
4	McGee, Kiara	25	71	2.84	26	178	.253	1	0.04	2	3	0.08	0	8	0.32	2	9	11	0.44	4	0	79.5
15	Reasor, Ashlie	25	57	2.28	25	129	.248	1	0.04	0	0	0.00	0	8	0.32	0	20	20	0.80	2	0	67.0
12	Hardesty, Emily	27	47	1.74	18	153	.190	7	0.26	2	2	0.07	11	66	2.44	1	10	11	0.41	0	0	55.0
1	Labhart, Katelyn	1	0	0.00	0	0	.000	0	0.00	0	1	0.00	0	0	0.00	0	0	0	0.00	0	0	0.0
13	Litwin, Gabby	23	0	0.00	0	1	.000	5	0.22	2	5	0.09	7	46	2.00	0	0	0	0.00	0	0	2.0
11	Houser, Amy	20	0	0.00	0	0	.000	8	0.40	4	5	0.20	5	33	1.65	0	0	0	0.00	0	0	4.0
3	Panter, Paige	6	1	0.17	3	5	-.400	0	0.00	0	0	0.00	1	2	0.33	0	0	0	0.00	1	0	1.0
<b>TEAM</b>		-	-	-	-	-	-	-	-	-	-	-	2	-	-	-	-	-	-	-	-	-
TEXAS A&M		27	388	14.37	124	856	.308	361	13.37	28	34	1.04	29	353	13.07	8	120	68.0	2.52	19	6	484.0
Opponents		27	347	12.85	149	909	.218	330	12.22	29	47	1.07	28	300	11.11	13	78	52.0	1.93	19	3	428.0

Team Statistics	TAMU	OPP
<b>ATTACK</b>		
Kills	388	347
Errors	124	149
Total Attacks	856	909
Attack Pct	.308	.218
Kills/Set	14.4	12.9
<b>SET</b>		
Assists	361	330
Attempts	843	887
Assist Pct	.428	.372
Assists/Set	13.4	12.2
<b>SERVE</b>		
Aces	28	29
Errors	34	47
Attempts	618	551
Serve Pct	.945	.915
Aces/Set	1.0	1.1
<b>SERVE RECEPTIONS</b>		
Errors	29	28
Errors/Set	1.1	1.0
Attempts	504	584
Reception Pct	.942	.952
<b>DEFENSE</b>		
Digs	353	300
Digs/Set	13.1	11.1
<b>BLOCKING</b>		
Block Solo	8	13
Block Assist	120	78
Total Blocks	68.0	52.0
Blocks/Set	2.5	1.9
Block Errors	19	19
Ball handling errors	6	3
<b>ATTENDANCE</b>		
Total	9153	3495
Dates/Avg Per Date	5/1831	3/1165
Neutral site #/Avg	0/0	
Current win streak	4	-
Home win streak	4	-

Date	Opponent	Score	Score by set	Att.
*Sep 27	ARKANSAS	L 1-3	25-21,13-25,25-27,22-25	1278
*Sep 30	at Auburn	w 3-0	25-14,25-17,25-21	639
*Oct 04	OLE MISS	w 3-0	25-13,25-20,25-13	1760
*Oct 09	at #17 Florida	L 0-3	9-25,23-25,18-25	2011
*Oct 10	at South Carolina	w 3-2	27-29,25-23,22-25,25-21,15-4	845
*Oct 16	ALABAMA	w 3-0	25-22,25-18,25-21	2782
*Oct 18	MISSISSIPPI STATE	w 3-0	25-19,25-18,25-15	1777
*Oct 21	LSU	w 3-0	25-19,25-22,25-18	1556

+ Texas A&M Invitational, College Station, Texas  
 # Comfort Suites Challenge, Iowa City, Iowa

Record in 3-set matches: 5-1  
 Record in 4-set matches: 0-1  
 Record in 5-set matches: 1-0

## 2015 TEXAS A&M TRENDS/HIGHS & LOWS

2015 RECORD WHEN...	
leading in kills .....	10-0
trailing in kills.....	2-6
tied in kills.....	1-0
leading in attack percentage.....	13-0
trailing in attack percentage .....	0-6
tied in attack percentage .....	0-0
leading in service aces.....	6-0
trailing in service aces.....	6-5
tied in service aces.....	1-1
leading in digs.....	11-2
trailing in digs .....	2-4
tied in digs .....	0-0
leading in blocks .....	11-0
trailing in blocks.....	2-6
tied in blocks.....	0-0
leading in points .....	11-0
trailing in points.....	1-6
tied in points.....	1-0
hitting .300 or better.....	6-0
hitting .200 or better.....	13-4
hitting below .200.....	0-2
holding opponents below .200.....	8-0
winning set one .....	12-1
winning set two .....	10-1
winning set three.....	9-2
winning set four.....	4-0
losing set one.....	1-5
losing set two.....	3-5
losing set three .....	4-4
losing set four .....	2-4
3-set matches .....	7-2
4-set matches .....	2-4
5-set matches .....	4-0

2015 SEASON HIGHS/LOWS			
<b>TEXAS A&amp;M INDIVIDUAL SEASON HIGHS</b>		<b>OPPONENT INDIVIDUAL SEASON HIGHS</b>	
Kills	23 Jazzmin Babers at South Carolina	Kills	20, three players
Attempts	51, Kiara McGee vs. New Mexico State	Attempts	57, Pilar Victoria, Arkansas
Pct. (min 10k)	.765 [14-1-17], Shelby Sullivan vs. Wichita State	Pct. (min 10k)	.810 [18-1-21] Rhamat Alhassan, Florida
	.765 [14-1-17], Jazzmin Babers at Auburn	Assists	57, Loxley Keala, Iowa
Assists	60, Stephanie Aiple vs. New Mexico State	Aces	4, Dalianliz Rosado, Minnesota
Aces	5, Katelyn Labhart at Florida A&M	Digs	30, Myanna Ruiz, Milwaukee
Digs	27, Amy Nettles vs. Colorado State	BS	2, three players
BS	3, Jazzmin Babers vs. Colorado State	BA	9, Molly Lohman, Minnesota
BA	8, Jazzmin Babers at Auburn	TB	9, Molly Lohman, Minnesota
	8, Jazzmin Babers vs. New Mexico State		9, Chanell Clark-Bibbs, Arkansas
	8, Kaitlyn Blake vs. New Mexico State	Points	25.0, Dessaa Legros, South Carolina
TB	10, Jazzmin Babers vs. New Mexico State		
	10, Jazzmin Babers vs. Colorado State	<b>OPPONENT SEASON HIGHS/LOWS</b>	
Points	27.0, Jazzmin Babers vs. New Mexico State		
<b>TEXAS A&amp;M TEAM SEASON HIGHS/LOWS</b>			
	<b>Higgs</b>		<b>Low</b>
Kills	68 vs. NM State	35 at Stanford	
Errors	30 at South Carolina	5 at Auburn	
Attempts	172 vs. NM State	72 vs. Florida A&M	
Pct.	.500 at Florida A&M	.139 vs. Iowa State	
	[73-7-72]	[51-29-158]	
Assists	64 vs. NM State	32 at Stanford	
Aces	10 at Florida A&M	1 three times	
SE	10 at Stanford	1 three times	
	10 vs. ACU		
RE	13 vs. Colorado State	1 at Florida A&M	
		1 vs. Ole Miss	
Digs	78 vs. Colorado State	25 at Florida A&M	
BS	5 vs. Colorado State	0 six times	
BA	32 vs. NM State	4 at Florida A&M	
TB	19.0 vs. NM State	4.0 three times	
BE	6 at South Carolina	0 three times	
BHE	3 vs. Iowa State	0 eight times	
Points	91.0 vs. NM State	42.5 at Stanford	

2015 INDIVIDUAL AND TEAM SEASON HIGHS BY SETS			
<b>INDIVIDUAL MATCH HIGHS</b>	<b>Three-Set Match</b>	<b>Four-Set Match</b>	<b>Five-Set Match</b>
<b>Attack Percentage [K-E-TA]</b>	.765 [14-1-17], Shelby Sullivan vs. Wichita State	.586 [19-2-29], Jazzmin Babers vs. Abilene Christian	.615 [19-3-26], Ashlie Reasor at South Carolina
<b>Kills</b>	.765 [14-1-17], Jazzmin Babers at Auburn 14, Shelby Sullivan vs. Wichita State 14, Jazzmin Babers at Auburn	20, Jazzmin Babers vs. Milwaukee	23 Jazzmin Babers at South Carolina
<b>Total Attempts</b>	27, Kiara McGee vs. Ole Miss	40, Ashlie Reasor vs. Abilene Christian	51, Kiara McGee vs. New Mexico State
<b>Assists</b>	45, Stephanie Aiple vs. Alabama	51, Stephanie Aiple vs. Milwaukee	60, Stephanie Aiple vs. New Mexico State
<b>Digs</b>	14, Emily Hardesty, Alabama 14, Amy Nettles, Mississippi State	20, Amy Nettles vs. Milwaukee	27, Amy Nettles vs. Colorado State
<b>Aces</b>	5, Katelyn Labhart at Florida A&M	2, Ashlie Reasor vs. Abilene Christian 2, Amy Houser vs. Iowa State	4, Kiara McGee vs. Minnesota
<b>Total Blocks</b>	8, Jazzmin Babers vs. Ole Miss 8, Jazzmin Babers vs. LSU	8, Kaitlyn Blake vs. Abilene Christian	10, Jazzmin Babers vs. New Mexico State 10, Jazzmin Babers vs. Colorado State
<b>Block Solos</b>	2, Jazzmin Babers vs. LSU	2, Jazzmin Babers at Florida State 2, Jazzmin Babers vs. Arkansas	3, Jazzmin Babers vs. Colorado State
<b>Block Assists</b>	8, Jazzmin Babers at Auburn	7, Kaitlyn Blake vs. Abilene Christian	8, Jazzmin Babers vs. New Mexico State 8, Kaitlyn Blake vs. New Mexico State
<b>Points</b>	18.0, Jazzmin Babers at Auburn	23.5 Jazzmin Babers vs. Milwaukee	27.0, Jazzmin Babers vs. New Mexico State
<b>TEAM MATCH HIGHS</b>	<b>Three-game Match</b>	<b>Four-Game Match</b>	<b>Five-Game Match</b>
<b>Attack Percentage (K-E-TA)</b>	.500 [43-7-72] at Florida A&M	.300 [64-16-160] vs. Milwaukee	.285 [68-19-172] vs. New Mexico State
<b>Kills (K-E-TA)</b>	52 vs. Alabama	68 vs. Abilene Christian	68 vs. New Mexico State
<b>Total Attempts (K-E-TA)</b>	105 vs. LSU	160 vs. Milwaukee	172 vs. New Mexico State
<b>Assists</b>	51 vs. Alabama	60 vs. Abilene Christian	64 vs. New Mexico State
<b>Digs</b>	48 vs. Ole Miss	67 vs. Milwaukee	78 vs. Colorado State
<b>Aces</b>	5 four times	5 vs. Abilene Christian	6 vs. Minnesota
<b>Total Blocks</b>	11.0 vs. Ole Miss 11.0 vs. LSU	13.5 vs. Abilene Christian	19.0 vs. New Mexico State
<b>Block Solos</b>	3 vs. Wichita State 3 vs. LSU	3 vs. Abilene Christian 3 vs. Arkansas	5 vs. Colorado State
<b>Block Assists</b>	22 vs. Ole Miss	21 vs. Abilene Christian	32 vs. New Mexico State
<b>Points</b>	62.0 vs. Alabama	86.5 vs. Abilene Christian	91.0 vs. New Mexico State

## 2015 TEXAS A&M MATCH-BY-MATCH STATISTICAL LEADERS

Date	Opponent	Result	Hitting % (min. 10 k)	Kills	Digs	Blocks	Assists	Points
Aug. 28	at #2 Stanford	L, 0-3	Lowak (.375)	Lowak (13)	Aiple/Nettles (6)	Babers (3)	Aiple (28)	Lowak (13.5)
Aug. 29	vs. Minnesota	W, 3-2	Babers (.417)	McGee (13)	Nettles (15)	Babers (4)	Aiple (51)	McGee (17.5)
Sept. 5	Wichita State	W, 3-0	Sullivan (.765)	Sullivan (14)	Nettles (10)	Babers/Blake/Sullivan (4)	Aiple (38)	Sullivan (16.5)
Sept. 5	Abilene Christian	W, 3-1	Babers (.586)	Babers (19)	Nettles (17)	Blake (8)	Shebeneck (29)	Babers (22.5)
Sept. 6	New Mexico State	W, 3-2	Babers (.432)	Babers/McGee (20)	Nettles (17)	Babers (10)	Aiple (60)	Babers (27.0)
Sept. 11	vs. Iowa State	L, 1-3	Blake (.321)	Blake (14)	Nettles (16)	Aiple/Babers/Blake (2)	Aiple (35)	Blake (15.0)
Sept. 11	vs. Milwaukee	W, 3-1	Babers (.500)	Babers (20)	Nettles (20)	Babers (6)	Aiple (51)	Babers (23.5)
Sept. 12	at Iowa	L, 1-3	Babers/Lowak (.333)	Babers (17)	Nettles (17)	Babers (6)	Aiple (50)	Babers (20.0)
Sept. 15	#15 Colorado State	W, 3-2	Hardesty (.317)	Hardesty (17)	Nettles (27)	Babers (10)	Shebeneck (30)	Hardesty (18.5)
Sept. 18	at #18 Florida State	L, 1-3	Hardesty (.281)	Hardesty (12)	Nettles (16)	Babers (6)	Shebeneck (38)	Hardesty (12.5)
Sept. 19	at Florida A&M	W, 3-0	---	Hardesty (9)	Nettles (8)	Babers/Reasor (2)	Shebeneck (37)	Hardesty (10.0)
Sept. 27	Arkansas	L, 1-3	McGee (.314)	McGee (14)	Nettles (18)	Babers (5)	Aiple (33)	McGee (16.0)
Sept. 30	at Auburn	W, 3-0	Babers (.765)	Babers (14)	Nettles (9)	Babers (8)	Aiple (29)	Babers (18.0)
Oct. 4	Ole Miss	W, 3-0	Babers (.400)	McGee (12)	Nettles (12)	Babers (7)	Aiple (33)	Babers (13.5)
Oct. 9	at Florida	L, 0-3	Babers (.588)	Babers (13)	Hardesty (7)	Aiple/Babers/Hardesty/Sullivan (2)	Aiple (31)	Babers (14.0)
Oct. 11	at South Carolina	W, 3-2	Reasor (.615)	Babers (23)	Nettles (14)	Sullivan (6)	Aiple (56)	Babers (24.5)
Oct. 16	Alabama	W, 3-0	Reasor (.556)	Reasor/Sullivan (12)	Hardesty (14)	Sullivan (6)	Aiple (45)	Sullivan (15.0)
Oct. 18	Mississippi State	W, 3-0	Sullivan (.400)	Sullivan (10)	Nettles (14)	Sullivan (3)	Aiple (31)	Sullivan (14.0)
Oct. 21	LSU	W, 3-0	McGee (.476)	McGee (13)	Nettles (11)	Babers (8)	Aiple (40)	Babers (17.0)
Oct. 30	at Kentucky							
Nov. 1	at Tennessee							
Nov. 4	Missouri							
Nov. 8	Georgia)							
Nov. 13	at Ole Miss							
Nov. 15	at Mississippi State							
Nov. 18	Kentucky							
Nov. 22	Florida							
Nov. 25	at Missouri							
Nov. 28	at Arkansas							

## 2015 TEXAS A&M STARTING LINEUPS

Date	Opponent	Setter	OH/DS	OH/DS	RS/DS	MB	MB	Libero
Aug. 28	at #2 Stanford	Aiple	Houser	Hardesty	Reasor	Babers	Sullivan	Nettles
Aug. 29	vs. Minnesota	Aiple	Lowak	McGee	Arenas	Babers	Sullivan	Nettles
Sept. 5	Wichita State	Aiple	Hardesty	McGee	Blake	Babers	Sullivan	Nettles
Sept. 5	Abilene Christian	Aiple	Hardesty	McGee	Reasor	Babers	Blake	Nettles
Sept. 6	New Mexico State	Aiple	Hardesty	McGee	Reasor	Babers	Blake	Nettles
Sept. 11	vs. Iowa State	Aiple	Hardesty	McGee	Blake	Babers	Sullivan	Nettles
Sept. 11	vs. Milwaukee	Aiple	Lowak	McGee	Blake	Babers	Sullivan	Nettles
Sept. 12	at Iowa	Aiple	Lowak	McGee	Blake	Babers	Sullivan	Nettles
Sept. 15	#15 Colorado State	Aiple	Lowak	Hardesty	Blake	Babers	Sullivan	Nettles
Sept. 18	at Florida State	Shebeneck	Lowak	Hardesty	Reasor	Babers	Sullivan	Nettles
Sept. 19	at Florida A&M	Shebeneck	Hardesty	McGee	Labhart	Babers	Sullivan	Nettles
Sept. 27	Arkansas	Shebeneck	Hardesty	Panter	Reasor	Babers	Sullivan	Nettles
Sept. 30	at Auburn	Aiple	Hardesty	McGee	Houser	Babers	Sullivan	Nettles
Oct. 4	Ole Miss	Aiple	Hardesty	McGee	Houser	Babers	Sullivan	Nettles
Oct. 9	at Florida	Aiple	Hardesty	McGee	Houser	Babers	Sullivan	Nettles
Oct. 11	at South Carolina	Aiple	Hardesty	McGee	Houser	Babers	Sullivan	Nettles
Oct. 16	Alabama	Aiple	Hardesty	McGee	Houser	Babers	Sullivan	Nettles
Oct. 18	Mississippi State	Aiple	Hardesty	McGee	Reasor	Babers	Sullivan	Nettles
Oct. 21	LSU	Aiple	Hardesty	McGee	Reasor	Babers	Sullivan	Nettles
Oct. 30	at Kentucky							
Nov. 1	at Tennessee							
Nov. 4	Missouri							
Nov. 8	Georgia)							
Nov. 13	at Ole Miss							
Nov. 15	at Mississippi State							
Nov. 18	Kentucky							
Nov. 22	Florida							
Nov. 25	at Missouri							
Nov. 28	at Arkansas							













# THE 2015 AGGIES



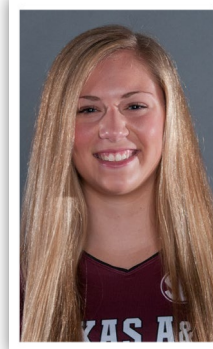
**KATELYN LABHART**  
DS • 5-10 • Jr-2L  
Whitesboro, Texas  
Whitesboro

1



**SHELBY SULLIVAN**  
MB • 6-2 • Sr-3L  
Richardson, Texas  
J.J. Pearce

2



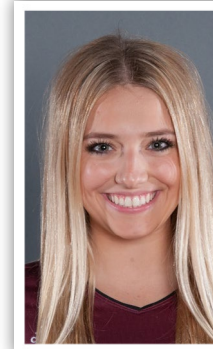
**PAIGE PANTER**  
DS • 5-11 • Fr-HS  
Southlake, Texas  
Southlake Carroll

3



**KIARA MCGEE**  
OH • 5-11 • So-1L  
San Antonio, Texas  
Taft

4



**AMY NETTLES**  
L/DS • 5-4 • So-1L  
San Antonio, Texas  
Churchill

5



**MONTSE CASTRO**  
OH/MB • 6-7 • Fr-HS  
Mexico City, Mexico  
Plano East/  
Mississippi State

7



**ANGELA LOWAK**  
OH • 6-0 • Sr-3L  
New Braunfels, Texas  
New Braunfels

8



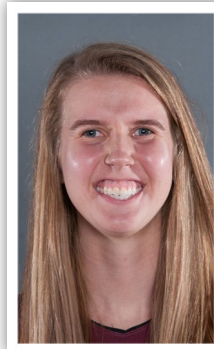
**MARGARET CONNETT**  
OH • 6-0 • Fr-HS  
The Woodlands, Texas  
The John Cooper School

10



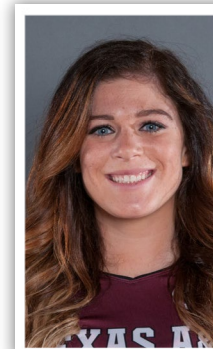
**AMY HOUSER**  
DS/S • 5-8 • Fr-HS  
Houston, Texas  
Memorial

11



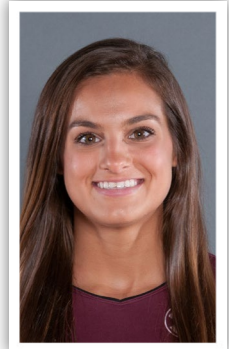
**EMILY HARDESTY**  
OH • 6-3 • Jr-2L  
Plano, Texas  
Trinity Christian Academy

12



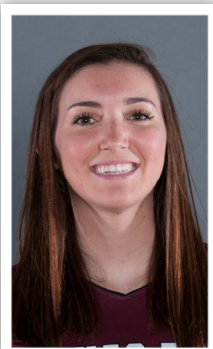
**GABBY LITWIN**  
DS • 5-8 • RS-So-TR  
Allen, Texas  
Plano East/Mississippi  
State

13



**VICTORIA ARENAS**  
L/DS • 5-6 • Jr-2L  
Cypress, Texas  
Cypress Woods

14



**ASHLIE REASOR**  
OPP • 6-1 • So-1L  
San Antonio, Texas  
Reagan

15



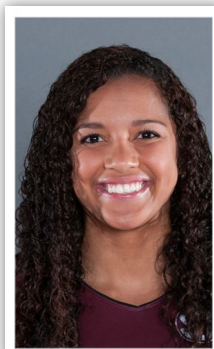
**KAITLYN BLAKE**  
MB/OPP • 6-2 • Fr-HS  
Allen, Texas  
Allen

16



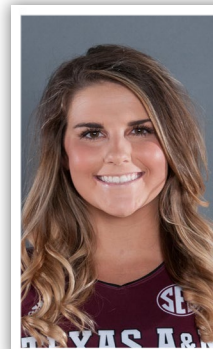
**KAYSIE SHEBNECK**  
S/OPP • 6-1 • Jr-2L  
Racine, Wis.  
Burlington

17



**JAZZMIN BABERS**  
MB • 6-2 • Jr-2L  
Bowling Green, Ohio  
Midway (Waco, Texas)

22



**STEPHANIE AIPLE**  
S • 6-1 • So-1L  
Round Rock, Texas  
Round Rock

23



**LAURIE CORBELLI**  
Head Coach  
23rd season at Texas A&M  
30th season overall