

# 2017-18 SCHEDULE

November 2017			
10	SACRAMENTO STATE (N1)	SECN+	W, 101-70
12	GARDNER-WEBB (N1)	SECN+	W, 72-34
16	at Montana		W, 71-54
19	at Washington State	Pac-12.com	4 p.m.
22	MOREHEAD STATE (N1)	SECN+	2 P.M.
26	MARSHALL	SECN+	2 P.M.
30	at Baylor^	FoxCollegeSports	8 p.m.

December 2017			
03	TENNESSEE TECH	SECN+	2 P.M.
05	EVANSVILLE	SECN+	7 P.M.
08	at Florida Gulf Coast		7 p.m.
10	at Miami (Fla.)		1 p.m.
17	LOUISVILLE	SEC NETWORK	3 P.M.
21	CALIFORNIA	SEC NETWORK	NOON
28	at Middle Tennessee		7:30 p.m.
31	TENNESSEE*!	SEC NETWORK	NOON

January 2018			
04	at Texas A&M*	SEC Network	7 p.m.
07	GEORGIA*	SECN+	2 P.M.
11	at Florida*	SECN+	7 p.m.
15	at Vanderbilt*	SEC Network	7 p.m.
21	SOUTH CAROLINA*!	ESPNU	NOON
25	ALABAMA*	SECN+	7 P.M.
29	at Arkansas*	SEC Network	7 p.m.

February 2018			
01	AUBURN*	SECN+	7 P.M.
04	LSU*!	SEC NETWORK	NOON
08	at Missouri*	SEC Network	9 p.m.
11	at Mississippi State*	ESPNU	2 p.m.
15	ARKANSAS*	SECN+	7 P.M.
18	at South Carolina*	SEC Network	3 p.m.
22	at Ole Miss*	SEC Network	8:30 p.m.
25	MISSISSIPPI STATE*ESPNU/ESPNU2		12/4 P.M.

March 2018			
28-4	SEC Tournament (N2)		TBA
16-19	NCAA First & Second Rounds (N3)		TBA
23-26	NCAA Regionals (N4)		TBA

April 2018			
30-1	NCAA Final Four (N5)		TBA

All Times Eastern (ET); \* denotes SEC game; ^ denotes Big 12/SEC Challenge; ! denotes game played at Rupp Arena; N1 – Matthew Mitchell Classic (multi-team event) – Morehead, Ky. (Johnson Arena); Lexington, Ky. (Memorial Coliseum); N2 – SEC Tournament – Nashville, Tenn. (Bridgestone Arena); N3 – NCAA First & Second Rounds – TBD; N4 – NCAA Regionals – Albany, N.Y. (Times Union Center), Kansas City, Mo. (Sprint Center), Lexington, Ky. (Rupp Arena), Spokane, Wash. (Veterans Memorial Arena); N5 – NCAA Final Four – Columbus, Ohio (Nationwide Arena)

## (25/rv) Kentucky Wildcats at Washington State Cougars

Sunday, Nov. 19, 2017 • 4 p.m. ET • Pac-12.com  
Pullman, Wash. • Beasley Coliseum (12,058)

UK Media Relations • (859) 257-3838 • www.ukathletics.com  
Kentucky WBB Contacts: **Evan Crane** (wesley.crane@uky.edu) and **Karlie Kinneer** (karlie.kinneer@uky.edu)

## GAME CENTER

**KENTUCKY**  
Record: 3-0 (0-0 SEC)  
H: 2-0 | A: 1-0 | N: 0-0  
Ranking: 25/rv  
RPI: n/a



Last Game: W, 71-54 at Montana on Nov. 16, 2017

Coach: Matthew Mitchell (Mississippi St, 1995)  
Overall: 274-129 (.679) (13th season)  
at UK: 244-100 (.709) (11th season)

**WASHINGTON ST.**  
Record: 1-2 (0-0 Pac12)  
H: 0-0 | A: 1-2 | N: 0-0  
Ranking: not ranked  
RPI: n/a



Last Game: W, 74-70 at San Francisco on Nov. 15, 2017

Coach: June Daugherty (Ohio State, 1978)  
Overall: 434-413 (.512) (29th Season)  
at WSU: 121-200 (.376) 11th Season)

## QUICK NOTES

- Kentucky is in its 44th season of varsity women's basketball with a 786-515 (.604) all-time record.
- The Wildcats have had great success in Memorial Coliseum, sitting at 432-152 (.739) overall in the historic building, including a 142-23 (.860) mark under head coach Matthew Mitchell.
- After its win Friday vs. Sacramento State, UK moved to 36-8 all-time in season openers, including winning nine in a row. The Wildcats are 40-4 all-time in home openers and have won nine in a row as well.
- Sunday is the third ever meeting between Kentucky and Washington State in women's basketball. The Wildcats won the last meeting last season in Memorial Coliseum, 69-67. The first-ever meeting was also in Memorial Coliseum in November of 2006 when UK posted a 80-51 victory. This is Kentucky's first ever trip to Pullman, Wash.
- UK is 6-9 all-time against teams from the Pac-12 conference with Washington State being the first of two Pac-12 teams UK is scheduled to play this season. Last season, UK went 1-2 against teams from the Pac-12 falling at Colorado before a home loss against Arizona State and a win against Washington State. Cal is the other Pac-12 team UK is scheduled to play on Dec. 21 in Lexington.
- Kentucky earned its first true road win of the season Thursday, defeating Montana 71-54 at Dahlberg Arena. After the game was tied 27-27 at halftime, the Wildcats outscored the Lady Griz 44-27 in the second half behind the third career double-double from Taylor Murray, who had 18 points and 12 rebounds. Maci Morris and Jaida Roper each scored in double figures in the game

# STARTING FIVE



- |  |   |  |            |            |                           |
|--|---|--|------------|------------|---------------------------|
| <b>#4</b>  | <b>MACI MORRIS</b>  | <b>G</b>   | <b>6-0</b> | <b>Jr.</b> | <b>Pineville, Ky.</b>     |
| • Has started every game of her UK career, averaging 10.3 points per game in her career.     | • Scored a career-best 29 points with three assists and Arizona State last season.      | • Team leader in career 3s hit with 107 after hitting three Thursday against Montana.  |            |            |                           |
| <b>#20</b>   | <b>DORIE HARRISON</b>   | <b>C</b>   | <b>6-3</b> | <b>Fr.</b> | <b>Nashville, Tenn.</b>   |
| • Started in season opener vs. Sac. State with 10 points, nine rebounds and three assists.   | • Had nine points and eight rebounds in Kentucky's win at Montana, adding and assist.   | • Gifted rebounder and shows great focus and intensity on the defensive end.           |            |            |                           |
| <b>#22</b>   | <b>MAKENZIE CANN</b>  | <b>G</b>   | <b>6-1</b> | <b>Sr.</b> | <b>Lawrenceburg, Ky.</b>  |
| • Shined in season opener with 17 points and six rebounds, hitting four 3s.                  | • Played 32 games with four starts in 2016-17 avg. 28.0 minutes per game and 5.8 ppg.   | • Finished with the second most 3-pointers on the team last year with 45.              |            |            |                           |
| <b>#24</b>   | <b>TAYLOR MURRAY</b>  | <b>G</b>   | <b>5-6</b> | <b>Jr.</b> | <b>Odenton, Md.</b>       |
| • Led all scorers with 22 points, five rebounds and three assists in opener vs. Sac. State.  | • Third career double-double against Montana with 18 points, 12 rebounds and 3 assists. | • Named Preseason All-SEC Second Team by league coaches earlier this year.             |            |            |                           |
| <b>#45</b>   | <b>ALYSSA RICE</b>  | <b>C</b>   | <b>6-3</b> | <b>Sr.</b> | <b>Reynoldsburg, Ohio</b> |
| • Has played in 96 career games with 46 starts, including 33 games and 30 starts in 2016-17. | • Tied her career high in points scored with 11 against Gardner-Webb adding 8 rebounds. | • Strong performance at Montana with 8 points, 9 rebounds and one block in 23 minutes. |            |            |                           |

## #BelieveInBlue

### TELEVISION - Pac12.com

Play-by-Play Greg Heister  
Color Analyst n/a

### RADIO - UK Sports Network

Play-by-Play Darren Headrick

### ONLINE - Pac12.com

LIVE GAME STATS ON YOUR LAPTOP!  
kentucky.statbroadcast.com (home games only)  
Passcode: ukwbb

### TICKETS

Tickets are available on ukathletics.com/tickets



SOCIAL MEDIA  
@KentuckyWBB



## EIGHT STRAIGHT NCAA TOURNAMENTS

## FIVE SWEET 16 & THREE ELITE EIGHT APPEARANCES IN LAST EIGHT SEASONS

## TELEVISION CHART



**LASHAE HALSEL**  
FORWARD

**0**

6-0 – Jr.  
Bowling Green, Ky.  
(Warren Central HS)



**PAIGE POFFENBERGER**  
GUARD

**2**

5-8 – Soph.  
Morgantown, W.Va.  
(Morgantown HS)



**KEKE MCKINNEY**  
FORWARD

**3**

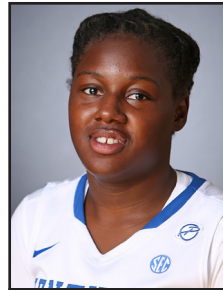
6-1 – Fr.  
Knoxville, Tenn.  
(Fulton HS)



**MACI MORRIS**  
GUARD

**4**

6-0 – Jr.  
Pineville, Ky.  
(Bell County HS)



**AMANDA PASCHAL**  
GUARD

**12**

5-7 – Jr. – TR  
Brooklyn, N.Y.  
(ChIPLEY HS/Gulf Coast St. JC)



**TATYANA WYATT**  
FORWARD

**14**

6-2 – Fr.  
Columbus, Ga.  
(Columbus HS)



**JESSICA HARDIN**  
GUARD

**15**

5-8 – R-Sr.  
Monticello, Ky.  
(Wayne County HS/  
Bellarmine)



**DORIE HARRISON**  
CENTER

**20**

6-3 – Fr.  
Nashville, Tenn.  
(Hillsboro HS)



**OGECHI ANYAGALIGBO**  
FORWARD

**21**

6-1 – Jr.  
Miami, Fla.  
(Miami County Day HS/  
Stony Brook)



**MAKENZIE CANN**  
GUARD

**22**

6-1 – Sr.  
Lawrenceburg, Ky.  
(Anderson County HS/  
Cincinnati)



**KAMERON ROACH**  
GUARD

**23**

5-6 – Fr.  
Hopkins, S.C.  
(Lower Richland HS)



**TAYLOR MURRAY**  
GUARD

**24**

5-6 – Jr.  
Odenton, Md.  
(Annapolis Area Christian HS)

## COACHING STAFF



**JAIDA ROPER**  
GUARD

**32**

5-6 – Soph.  
Memphis, Tenn.  
(Houston HS)



**ALYSSA RICE**  
FORWARD

**45**

6-3 – Sr.  
Reynoldsburg, Ohio  
(Reynoldsburg HS)



**MATTHEW MITCHELL**  
HEAD COACH

**11th**

Season  
Louisville, Miss.  
(Mississippi State, '95)



**KYRA ELZY**  
ASSOCIATE HEAD COACH

**2nd**

(6th overall at UK)  
LaGrange, Ky.  
(Tennessee, '99, '01)



**NIYA BUTTS**  
ASSISTANT COACH

**2nd**

(7th overall at UK)  
Americus, Ga.  
(Tennessee, '00/TTU, '02)



**LIN DUNN**  
ASSISTANT COACH

**2nd**

Season  
Dresden, Tenn.  
(UT Martin, '69)

## PRONUNCIATION GUIDE

**Ogechi Anyagaligbo** (oh-GECH-ee on-ya-gull-LEE-bo)

**Jaida Roper** (JAY-duh)

**Amanda Paschal** (PAS-kel)

**2 LaShae Halse** (luh-SHAY HALL-sull)

**Tatyana Wyatt** (TOT-e-on-uh)



## 2017-18 KENTUCKY WBB ROSTER

### NUMERICAL

No.	Name	Pos.	Cl.	Ht.	Hometown/High School/Previous College
0	LaShae Halsel	F	Jr.	6-0	Bowling Green, Ky./Warren Central HS
2	Paige Poffenberger	G	So.	5-8	Morgantown, W.Va./Morgantown HS
3	KeKe McKinney	F	Fr.	6-1	Knoxville, Tenn./Fulton HS
4	Maci Morris	G	Jr.	6-0	Pineville, Ky./Bell County HS
12	Amanda Paschal	G	Jr.	5-7	Brooklyn, N.Y./Chipleigh HS/Gulf Coast State
14	Tatyana Wyatt	F	Fr.	6-2	Columbus, Ga./Columbus HS
15	Jessica Hardin	G	R-Sr.	5-8	Monticello, Ky./Wayne County HS/Bellarmino
20	Dorie Harrison	C	Fr.	6-3	Nashville, Tenn./Hillsboro HS
21	Ogechi Anyagaligbo	F	Jr.	6-1	Miami, Fla./Miami Country Day/Stony Brook
22	Makenzie Cann	G	Sr.	6-1	Lawrenceburg, Ky./Anderson County HS/Cincinnati
23	Kameron Roach	G	Fr.	5-6	Hopkins, S.C./Lower Richland HS
24	Taylor Murray	G	Jr.	5-6	Odenton, Md./Annapolis Area Christian
32	Jaida Roper	G	So.	5-6	Memphis, Tenn./Houston HS
45	Alyssa Rice	C	Sr.	6-3	Reynoldsburg, Ohio/Reynoldsburg HS

### ALPHABETICAL

No.	Name	Pos.	Cl.	Ht.	Hometown/High School/Previous College
21	Ogechi Anyagaligbo	F	Jr.	6-1	Miami, Fla./Miami Country Day/Stony Brook
22	Makenzie Cann	G	Sr.	6-1	Lawrenceburg, Ky./Anderson County HS/Cincinnati
0	LaShae Halsel	F	Jr.	6-0	Bowling Green, Ky./Warren Central HS
15	Jessica Hardin	G	R-Sr.	5-8	Monticello, Ky./Wayne County HS/Bellarmino
20	Dorie Harrison	C	Fr.	6-3	Nashville, Tenn./Hillsboro HS
3	KeKe McKinney	F	Fr.	6-1	Knoxville, Tenn./Fulton HS
4	Maci Morris	G	Jr.	6-0	Pineville, Ky./Bell County HS
24	Taylor Murray	G	Jr.	5-6	Odenton, Md./Annapolis Area Christian
12	Amanda Paschal	G	Jr.	5-7	Brooklyn, N.Y./Chipleigh HS/Gulf Coast State
2	Paige Poffenberger	G	So.	5-8	Morgantown, W.Va./Morgantown HS
45	Alyssa Rice	C	Sr.	6-3	Reynoldsburg, Ohio/Reynoldsburg HS
23	Kameron Roach	G	Fr.	5-6	Hopkins, S.C./Lower Richland HS
32	Jaida Roper	G	So.	5-6	Memphis, Tenn./Houston HS
14	Tatyana Wyatt	F	Fr.	6-2	Columbus, Ga./Columbus HS

### Coaching Staff

**Head Coach:** Matthew Mitchell (Mississippi State, 1995) – 12th season, 10th at Kentucky  
**Associate Head Coach:** Kyra Elzy (Tennessee, 1999, 2001) – 2nd season, sixth at Kentucky  
**Assistant Coach:** Niya Butts (Tennessee, 2000; Tenn. Tech, 2002) – 2nd season, seventh at Kentucky  
**Assistant Coach:** Lin Dunn (UT Martin, 1969) – 2nd season

### Support Staff

**Assistant Athletics Director/Women's Basketball:** Amy Tilley (Kentucky, 2007)  
**Director of Player Development:** Amber Smith (Kentucky, 2011)  
**Exec. Associate AD/Women's Basketball Admin.:** Rachel Baker (Berea, 1999; Ohio State, 2001)  
**Staff Support Associates:** Beth Price (Kentucky, 2006), Jennifer Heerschee (Kentucky, 1998)  
**Coaching Video Coordinator:** Daniel Boice (Arizona, 2014, 2016)  
**Creative Director:** Kim Troxall (SCAD, 1994)  
**Senior Athletic Trainer:** Courtney Jones (Purdue, 2001)  
**Nutrition Coach:** Monica Fowler (Kentucky, 2010)  
**Team Physician:** Dr. Robert Hosey (Virginia Tech, 1989)  
**Strength & Conditioning Coach:** John Spurlock (Hanover College, 2005)  
**Academic Counselor:** Tiffany Hayden (Kentucky, 2001)  
**Media Relations Director:** Evan Crane (Kentucky, 2010)  
**Media Relations Assistant:** Karlie Kinneer (Iowa State, 2015)  
**Equipment Manager:** Kortez Wilson (Kentucky, 2014, 2016)

## NATIONAL POLLS

### The Associated Press Top 25

1.	Connecticut (32)	1-0	800
2.	Texas	1-0	729
3.	<b>Baylor</b>	<b>2-0</b>	<b>719</b>
4.	<b>South Carolina</b>	<b>1-0</b>	<b>685</b>
5.	<b>Louisville</b>	<b>2-0</b>	<b>638</b>
6.	Notre Dame	1-0	637
7.	<b>Mississippi State</b>	<b>1-0</b>	<b>617</b>
8.	UCLA	2-0	608
9.	Ohio State	1-1	583
10.	Oregon	2-0	500
11.	Duke	1-0	454
12.	West Virginia	1-0	405
13.	<b>Tennessee</b>	<b>1-0</b>	<b>373</b>
14.	Stanford	0-2	357
15.	Maryland	1-0	353
16.	Marquette	0-0	309
17.	Florida State	2-0	272
18.	Oregon State	1-0	213
19.	<b>Texas A&amp;M</b>	<b>2-0</b>	<b>198</b>
20.	<b>California</b>	<b>1-0</b>	<b>179</b>
21.	Oklahoma	1-0	165
22.	South Florida	2-0	157
23.	<b>Missouri</b>	<b>1-1</b>	<b>139</b>
24.	Michigan	2-0	121
25.	<b>KENTUCKY</b>	<b>2-0</b>	<b>56</b>

**Other UK opps receiving votes:** Miami 17, Florida 9, Alabama 4

### USA Today/Coaches Top 25

1.	Connecticut (25)	0-0	789
2.	<b>South Carolina (7)</b>	<b>0-0</b>	<b>719</b>
3.	<b>Baylor</b>	<b>0-0</b>	<b>687</b>
4.	<b>Mississippi State</b>	<b>0-0</b>	<b>678</b>
5.	Notre Dame	0-0	648
6.	Texas	0-0	608
7.	UCLA	0-0	582
8.	Ohio State	0-0	575
9.	Stanford	0-0	548
10.	<b>Louisville</b>	<b>0-0</b>	<b>504</b>
11.	Oregon	0-0	479
12.	Duke	0-0	442
13.	Maryland	0-0	380
14.	Florida State	0-0	334
15.	West Virginia	0-0	272
16.	<b>Missouri</b>	<b>0-0</b>	<b>249</b>
17.	Oregon State	0-0	246
18.	<b>Tennessee</b>	<b>0-0</b>	<b>229</b>
19.	Marquette	0-0	218
20.	DePaul	0-0	156
21.	Oklahoma	0-0	151
22.	South Florida	0-0	109
23.	Michigan	0-0	100
24.	<b>Miami</b>	<b>0-0</b>	<b>80</b>
25.	<b>California</b>	<b>0-0</b>	<b>79</b>
	Washington	0-0	79

**Other UK opps receiving votes:** Texas A&M 70, LSU 8, Florida Gulf Coast 7, Middle Tennessee 2

### WEEK-BY-WEEK

DATE	AP	COACHES
Preseason	RV	RV
Nov. 13/14	25	(no poll)

# BY THE BIG BLUE NUMBERS

13,225 . . . . . Season-high attendance vs. Arizona State, 8th highest in school history  
 5,213 . . . . . Average attendance for 2016-17, 14th nationally  
 785 . . . . . Number of wins in UK WBB history  
 274 . . . . . Career wins for Matthew Mitchell  
 244 . . . . . Wins at UK for Matthew Mitchell  
 47 . . . . . Number of ranked teams UK had defeated under Matthew Mitchell  
 12 . . . . . Consecutive years UK has participated in postseason play  
 8 . . . . . Consecutive NCAA Tournament appearances  
 2 . . . . . Number of UK players selected in 2017 WNBA Draft

## QUICK NOTES CONTINUED...

- with Morris posting 16 points on 3-of-6 from long range while Roper had a career-high 14 points with 5 rebounds and three assists. UK won the points in the paint 26-20 and points off turnovers 18-10.
- The road win against Montana was a welcome sight for the young Wildcats, who showed grit in the second half in a hostile environment to earn the road win. Last season, UK didn't win its first true road game until Jan. 12 at Alabama.
- UK had an impressive win vs. Gardner-Webb 71-34 on Nov. 12. The Wildcats were paced by the first-career double-double from Morris, who scored 10 points with 10 rebounds. Alyssa Rice led Kentucky with 11 points and eight rebounds. UK dominated 42-8 in points in the paint, 15-2 in second-chance points and 28-0 in bench points.
- Kentucky started its season with a win against Sacramento State on Friday night, 101-70. The Wildcats shot 50% from the field, 45% from 3 and 78.6% from the free-throw line in the game. UK dominated in the specialty stats winning the points in the paint 48-40, points off turnovers 18-9, second-chance points 17-7 and bench points 36-11.
- Murray started her junior season in style with a game-high 22 points against Sacramento State, adding five rebounds and three assists. Four other Wildcats scored in double figures with Makenzie Cann knocking down four 3s for 17 points, while freshman Tatyana Wyatt had 13 points and fellow rookie Dorie Harrison added 10. Morris had 12 points and four rebounds in the game.
- UK played all 12 eligible players against Sacramento State with 10 players scoring at least one point. UK also played all 11 eligible players against Gardner-Webb with 10 scoring.
- Kentucky played all five newcomers against Sacramento State with all five newcomers scoring. On top of Wyatt and Harrison, freshman guard Kameron Roach had six points with three assists while junior college transfer Amanda Paschal had five points and two assists. Freshman forward KeKe McKinney had three points and two rebounds.
- The Wildcats showed their potential for an explosive offense in the season opener by scoring a program-record 31 first-quarter points. The previous high was 27 vs. Morehead State and Tennessee Tech in 2015.
- UK's 56 first-half points vs. Sacramento State were the second-most points scored in the first half of a season opener in the Matthew Mitchell era (58 vs. Appalachian State, 11/14/14).
- Conversely, against Gardner-Webb the Wildcats showed they can play some elite defense, limiting the Bulldogs to just 34 points in the game, including four points in both the second quarter and fourth quarter. GWU hit only one field goal in the fourth quarter.
- Kentucky went on two separate 19-0 runs against Gardner-Webb.
- UK's guard have showed great ball control this season as Taylor Murray and Jaida Roper have combined to play 158 minutes over three games and only committed six turnovers. Murray has played 86 minutes and has 2 turnovers, while Roper has played 72 minutes and has 4 turnovers.
- Kentucky has won 67 consecutive regular-season non-conference games in Memorial Coliseum, dating back to Dec. 19, 2008 vs. Alabama A&M. The Wildcats are 2-0 in non-conference games inside Memorial Coliseum this season.
- For the eighth straight year, UK began its season ranked or receiving votes inside in the USA Today/Coaches' and AP Preseason Top 25, receiving votes in both listings. The Wildcats have already moved up into the top 25 in the AP Poll at No. 25.
- Kentucky is scheduled to play 16 games against teams inside the AP or Coaches' Top 25, including No. 3/3 Baylor, No. 4/2 South Carolina (twice), No. 7/4 Mississippi State (twice), No. 5/10 Louisville, No. 13/18 Tennessee, No. 23/16 Missouri, No. 19/rv Texas A&M, No. 20/25 California, No. rv/24 Miami (Fla.) and LSU, Florida, Alabama, Florida Gulf Coast and Middle Tennessee, who are receiving votes. In all, 16 of Kentucky's 27 regular-season opponents are either ranked or receiving votes in the preseason listing.
- Kentucky had three wins against ranked teams last season, taking down then-No. 14 Miami (Fla.), then-No. 12 Oklahoma and then-No. 3 Mississippi State. UK also had wins over Belmont, Missouri, Alabama, LSU, Auburn and Florida who were ranked or receiving votes last season.
- In 44 years of varsity women's basketball, Kentucky has 88 wins over ranked opponents, including 47 of those wins coming under Mitchell.
- The Wildcats have won 20 or more games 18 times in 43 years of varsity basketball, including a school-record eight in a row. It's important to note that UK had just 10 20-win seasons in its first 33 years of varsity women's basketball, but has eight in 10 seasons of the Matthew Mitchell era.
- The Wildcats advanced to the semifinals of the SEC Tournament for the eighth straight season, which is the longest active streak in the league.
- Combined the Kentucky women's basketball coaching staff has compiled over 80 years of experience at the Division I level, including coaching or playing in a combined 38 NCAA Tournaments with eight

## 2017-18 SEC STANDINGS

Team	SEC	Pct.	All	Pct.
Alabama	0-0	.000	3-0	1.000
<b>Kentucky</b>	<b>0-0</b>	<b>.000</b>	<b>3-0</b>	<b>1.000</b>
South Carolina	0-0	.000	3-0	1.000
Georgia	0-0	.000	2-0	1.000
Miss. State	0-0	.000	2-0	1.000
Tennessee	0-0	.000	2-0	1.000
Arkansas	0-0	.000	2-1	.666
Missouri	0-0	.000	2-1	.666
Ole Miss	0-0	.000	2-1	.666
Texas A&M	0-0	.000	2-1	.666
Auburn	0-0	.000	1-1	.500
Florida	0-0	.000	1-2	.333
LSU	0-0	.000	1-2	.333
Vanderbilt	0-0	.000	0-3	.000

# - Regular season co-champions  
 ^ - Tournament champions

## QUICK FACTS

Location: Lexington, Ky.  
 Founded: 1865  
 Enrollment: 30,000  
 Nickname: Wildcats  
 Colors: Blue (PMS 286) and White  
 Conference: Southeastern (Eastern Division)  
 Arena: Memorial Coliseum (8,000)  
 President: Dr. Eli Capilouto  
 Athletics Director: Mitch Barnhart  
 Faculty Representative: Dr. Joseph L Fink III

### COACHING STAFF

Head Coach: Matthew Mitchell  
 Assistant Coaches: Kyra Elzy, Niya Butts, Lin Dunn

### MEDIA RELATIONS

Asst. Media Relations Dir./WBB Contact  
 Evan Crane  
 270-559-8120 · cell  
 wesley.crane@uky.edu  
 Twitter: @EvanCraneKy  
 Media Relations Assistant (No. 2 WBB Contact)  
 Karlie Kinneer  
 515-460-1285 · cell  
 karlie.kinneer@uky.edu  
 Twitter: @KarlieKinneer

## WHO'S UP NEXT?



vs. Morehead State  
 Wednesday, Nov. 22  
 2 p.m. ET  
 Memorial Coliseum (8,000)  
 SEC Network+

## UK WBB ON SOCIAL MEDIA

Kentucky women's basketball is one of the most popular programs on Twitter. UK's account ranks third nationally, while head coach Matthew Mitchell has the fourth-most followers among Division I women's basketball coaches.

@KentuckyWBB - 4th Nationally with 36,005 followers  
 @UKCoachMitchell - 3rd Nationally with 31,281 followers

## KENTUCKY'S RECORD WHEN...

	ALL	SEC
Leading or tied at halftime	3-0	0-0
Trailing at halftime	0-0	0-0
Shoot 50 percent or higher	1-0	0-0
Shoot 60 percent or higher	0-0	0-0
Shoot less than 50 percent	2-0	0-0
Shoot higher percentage than opp.	3-0	0-0
Shoot lower percentage than opp	0-0	0-0
Opp. shoot worse than 50 percent	3-0	0-0
Opp. shoot 50 percent or higher	0-0	0-0
Opp. shoot 60 percent or higher	0-0	0-0
Score less than 60 points	0-0	0-0
Score 60 or more points	3-0	0-0
Score 70 or more points	3-0	0-0
Score 80 or more points	1-0	0-0
Score 90 or more points	1-0	0-0
Score 100 or more points	1-0	0-0
Opp. score 30 or less points	0-0	0-0
Opp. score 40 or less points	1-0	0-0
Opp. score 50 or less points	1-0	0-0
Opp. score 60 or less points	2-0	0-0
Opp. score 70 or less points	3-0	0-0
Opp. score 80 or less points	3-0	0-0
Opp. score 60 or more points	1-0	0-0
Opp. score 70 or more points	1-0	0-0
Opp. score 80 or more points	0-0	0-0
Opp. score 90 or more points	0-0	0-0
Outrebound or same as opponent	3-0	0-0
Outrebounded by opponent	0-0	0-0
Commit fewer turnovers than opp.	2-0	0-0
Commit same turnovers as opp.	0-0	0-0
Commit more turnovers than opp.	1-0	0-0
Commit single digit turnovers	1-0	0-0
Force 20 or more turnovers	0-0	0-0
Force 25 or more turnovers	0-0	0-0
Force 30 or more turnovers	0-0	0-0
Force 40 or more turnovers	0-0	0-0
Make 6 or more 3-pointers	2-0	0-0
Make 5 or fewer 3-pointers	1-0	0-0
Opp. make 6 or more 3-pointers	0-0	0-0
Opp. make 5 or fewer 3-pointers	3-0	0-0
Game decided by 10 pts or less:	0-0	0-0
Game decided by 1-5 pts:	0-0	0-0
Game decided by 6-10 pts:	0-0	0-0
Game decided by 11-15 pts:	0-0	0-0
Game decided by 16+ pts:	3-0	0-0
Overtime games:	0-0	0-0
Televised games:	2-0	0-0
SEC Network+	2-0	0-0
ESPNU	0-0	0-0
ESPN	0-0	0-0
ESPN2	0-0	0-0
SEC Network	0-0	0-0
Games vs. AP ranked opponents:	0-0	0-0
Games vs. AP Top 10	0-0	0-0
Games following a loss:	0-0	0-0
Games following a win:	2-0	0-0
More points in the paint than opp.:	3-0	0-0
Fewer points in the paint than opp.:	0-0	0-0
Same points in the paint than opp.:	0-0	0-0
More points off turnovers:	3-0	0-0
Fewer points off turnovers:	0-0	0-0
Same points off turnovers:	0-0	0-0
More bench points than opp.:	2-0	0-0
Fewer bench points than opp.:	1-0	0-0
Same bench points as opp.:	0-0	0-0
More 2nd-chance points than opp.:	2-0	0-0
Fewer 2nd-chance points than opp.:	1-0	0-0
Same 2nd-chance points as opp.:	0-0	0-0
One UK player scores 10+:	0-0	0-0
Two UK players score 10+:	0-0	0-0
Three UK players score 10+:	1-0	0-0
Four UK players score 10+:	1-0	0-0
Five UK players score 10+:	1-0	0-0
Six UK players score 10+:	0-0	0-0
Seven UK players score 10+:	0-0	0-0
Eight UK players score 10+:	0-0	0-0
On Monday:	0-0	0-0
On Tuesday:	0-0	0-0
On Wednesday:	0-0	0-0
On Thursday:	1-0	0-0
On Friday:	1-0	0-0
On Saturday:	0-0	0-0
On Sunday:	1-0	0-0
In November:	3-0	0-0
In December:	0-0	0-0
In January:	0-0	0-0
In February:	0-0	0-0
In March:	0-0	0-0
In April:	0-0	0-0

Final Fours, four national championships and a WNBA Championship. Elzy and Butts are in their second stint in Lexington after serving on Mitchell's staffs before. Butts was an associate head coach on Mitchell's first staff at Kentucky before Elzy joined the staff for four successful seasons. Dunn, who is a Women's Basketball Hall of Famer, has over 40 years of coaching experience, including three decades in the collegiate ranks.

- Morris is slowing making her way up the all-time 3-point field goals made list at Kentucky. The native of Pineville, Ky., has hit 107 career 3s needing just three more to tie Kristi Cushenberry for 10th all-time in program history with 110.
- Rice is the chair of the SEC WBB Leadership Council and was tabbed by the league office to the NCAA Competition Committee.
- Murray was tabbed by league coaches to the Preseason All-SEC Second Team. Murray averaged 12.2 points per game last season and paced the team with 3.9 assists per game. She is leading the team with 15.0 ppg this season, adding 4.54 rebounds per game and a team-best six assists.
- Junior forward Ogechi Anyagaligbo will miss the 2017-18 season due to sustaining a torn ACL in Kentucky's exhibition game vs. Southern Indiana.
- A key task entering the 2017-18 season will be replacing the All-America production of Makayla Epps and Evelyn Akhator, who combined to average 33.6 of the team's 70.9 points last season. Even with the loss of Epps/Akhator, UK still returns 52.6% of its scoring, 58.0% of its rebounding, 50.3% of its made field goals, 76.9% of its made 3-pointers and 64.7% of its assists from last season. In all, the Wildcats return eight of 11 eligible players.
- Kentucky is coming off a 22-11 record last season that saw the Wildcats make a school-record eighth straight appearance in the NCAA Tournament. The Wildcats also hosted the first and second rounds of the event for the fourth straight season.
- UK finished No. 18 in The Associated Press Top 25 and No. 25 in the USA Today/Coaches Top 25. It was the eighth straight season the Wildcats have finished inside the top 25 of both national listings.
- Mitchell's 2016-17 squad, which finished with the No. 14 overall RPI in the final NCAA RPI report, played the second-toughest schedule in the nation in 2016-17 with 25 of its 33 games being played against teams that finished in the top 100 of the NCAA RPI report. The Wildcats played 13 games against top-25 RPI teams with four wins, while it had six wins against RPI top 50 teams.

## SCOUTING WASHINGTON STATE

- Washington State enters Sunday's game with a 1-2 record after dropping its first two games of the season at UC Davis and at St. Mary's before earning a true road win at San Francisco on Wednesday, 74-70. The Cougars entered the season receiving votes in The Associated Press Top 25 before dropping its first two games of the season.
- Borislava Hristova is the leading scorer for the Cougars this season averaging 18.0 points per game, adding 5.0 rebounds per game. Hristova is 21-of-47 from the field and 2-for-10 from long range. Alexys Swedlund is averaging 13.3 points per game and 3.7 rebounds per game this season and has hit a team-best seven 3s. Chanelle Molina leads the team with 11 assists.
- WSU is averaging 75.0 points per game this season, allowing opponents to score 80.7 points per game. Teams are averaging 9.3 3s per game against the Cougars this season. ;
- The injury bug hit Washington State again last season as each of their top two scorers missed significant time due to injury with Borislava Hristova only playing nine games, while Chanelle Molina only played 17. Both averaged over 12 points per game. Alexys Swedlund and Molina were the stars for the Cougars in their trip to Lexington last fall with Swedlund scoring 20 points after hitting six 3s, while Molina had 17 points and five assists.
- WSU put together a good postseason run last season, winning four straight WNIT games to make it to the WNIT Final Four.

## SERIES HISTORY VS. WASHINGTON STATE

- Kentucky holds a 2-0 all-time record in games played against Washington State in women's basketball with both wins coming in Memorial Coliseum. The first meeting was in November of 2006 when UK posted a 80-51 victory over the Cougars in Memorial Coliseum. UK earned its second win last season in Lexington, posting a 69-67 victory. This is Kentucky's first-ever trip to Pullman, Wash. to play the Cougars.

## SERIES HISTORY VS. CURRENT ALIGNMENT OF THE PAC-12

- Kentucky is 6-9 all-time against the current alignment of the Pac-12 Conference. UK went 1-2 last year against Pac-12 teams, defeating Washington State with losses to Arizona State at home and Colorado on the road. Washington State is the first of two Pac-12 teams the Wildcats will play this season. UK will also play against Cal in Memorial Coliseum on Dec. 21.
- UK's all-time records against Pac-12 teams: 1-1 vs. Arizona State, 1-1 vs. Colorado, 1-0 vs. Oregon State, 1-4 vs. UCLA, 0-2 vs. Washington and 2-0 vs. Washington State.

## LAST TIME VS. WASHINGTON STATE

- Kentucky defeated Washington State 69-67 in Memorial Coliseum last season getting a double-double from then-senior Evelyn Akhator, who scored 19 points with 13 rebounds. Fellow senior Makayla Epps scored 20 points in the game, while Maci Morris had 14 points, going 2-of-6 from long range. The Wildcats were without Taylor Murray in the game, who was out due to injury.
- Washington State was paced by Alexys Swedlund, who had 20 points and hit six 3s, while Chanelle Molina scored 17 points and had five assists.
- UK jumped out to a 26-8 lead after the first quarter but WSU flipped the script by outscoring UK 28-12 in the second quarter. The Wildcats won the third quarter 20-16 to grab the lead before Washington State tightened the game late by winning the fourth quarter 15-11. Akhator made two clutch free throws late in the game to secure the UK win.

## 2017-18 GAME NOTES

### SECOND-HALF POWERS CATS TO FIRST TRUE-ROAD WIN

It was a game of firsts for Kentucky at Montana. The Wildcats were playing on the road for the first time and UK was not leading at halftime for the first time this season. After scoring just seven points in the second quarter to allow Montana to even the score at the break and get a hostile crowd into the game, the Wildcats faced their first test of the season which is exactly what Coach Mitchell wanted.

"I just through Montana was really tough and made a run in the second quarter and the crowd got into it and believe it or not, I wanted that tonight to see if we would fight back and work through adversity. But we had a great session in there at halftime and I thought our veterans were very passionate about winning the game and correcting the things we need to correct."

Kentucky did just that in the second half outscoring the Lady Griz 44-27, shooting 15-of-27 from the field in the final 20 minutes, while limiting Montana to just 7-of-27 shooting. UK scored 18 points off 11 Montana turnovers and had a 6-0 advantage in fast-break points. Taylor Murray paced UK with her third career double-double with 18 points and 12 rebounds, while Maci Morris and Jaida Roper each scored in double figures. Morris scored 16 points with three 3s, while Roper had 14 points, five rebounds and three assists.

The road win was important for the Wildcats, who did not have success on the road early last season. Kentucky did earn its first true-road win last season until Jan. 12 against Alabama going 0-5 before that in true road tests.

### DEFENSE SHINES AGAINST GARDNER-WEBB

Two days after scoring 101 points to take down Sacramento State, the Wildcats showed they were an all-around team by flashing some strong defense against Gardner-Webb, limiting the Running' Bulldogs to just 34 points on 14-of-55 shooting in a 72-34 win inside Memorial Coliseum. The Wildcats got off to a slow start with GWU scoring 12 first-quarter points, but UK outscored the Bulldogs 18-4 in the second quarter and 21-4 in the third quarter to roll to a convincing win. The UK defense had two different stretches of holding Gardner-Webb without a field goal of 9+ minutes and went on two separate 19-0 runs during that time.

### CATS LIGHT UP SCOREBOARD IN OPENER VS. SACRAMENTO STATE

For the 17th time under Matthew Mitchell, Kentucky scored 100 points in a game and it continued its streak of winning all 17 of those contests as it defeated Sacramento State 101-70 in its season opener on Nov. 10 inside Memorial Coliseum. All 12 eligible Wildcats played in the game with 10 scoring points. UK also showed its depth as all five newcomers not only played in the game but scored as well. UK had 36 bench points in the game to only 11 from Sacramento State. As a team, the Wildcats hit 50 percent from the field on 35-of-70 shooting and 45 percent from long range going 9-for-20. Sacramento State – one of the best 3-point shooting teams in the country – hit just five 3s in the game on 25 attempts and the Wildcats help them to just 36.1 percent from the floor overall.

### MORRIS, MURRAY LEAD WILDCATS PAST SOUTHERN INDIANA IN EXHIBITION

Maci Morris scored 19 points and dished out four assists as the Kentucky women's basketball team beat Southern Indiana 87-56 in its lone exhibition game on Nov. 5 inside Memorial Coliseum. Taylor Murray had 11 points, six rebounds and six assists for the Wildcats, while freshman Tatyana Wyatt added 10 points and five rebounds. Three Kentucky players (Keke McKinney, Jaida Roper and Alyssa Rice) had nine points, while Dorie Harrison added eight.

The Wildcats hit 30 of its 59 shots (52.1 percent) from the floor in the game and 21 of 27 (77.8 percent) from the free throw line. The Wildcats forced USI into 27 turnovers, converting those into 30 points. UK committed 22 turnovers of its own in the game, but the Wildcats outscored the Screaming Eagles 46-14 in the paint, and UK held a 37-11 advantage in bench points.

### TOP TO BOTTOM SCORING

With five newcomers on the squad Matthew Mitchell knew before the season started that depth was going to be to his advantage this season after having a short bench the past two years. So far he has been correct. With 13 eligible players on the team - including five that have played in their first career games this season - UK has shown it has a balanced scoring attack with all 13 players already seeing playing time and 11 of those 13 having scored a point. In its first two games this season UK has had 10 players score a point, including 5 players scoring in double figures vs. Sacramento State while four scored 10+ against GWU. Against Montana, six players scored with three getting into double digits.

All five newcomers not only played in the season opener, but scored, helping UK win the bench point battle 36-11 against Sacramento State. UK also won the bench point battle 28-0 against GWU.

### SPECIALTY STATS GIVING UK THE EDGE

Kentucky's success the past few seasons could be attributed to its success in the specialty stats. Below is a look at how the Wildcats have used these typically very important stats to their advantage:

Points in the Paint	UK 116, Opps. 68
Points off Turnovers	UK 53, Opps. 25
Second-Change Points	UK 41, Opps. 21
Fast Break Points	UK 14, Opps. 0
Bench Points	UK 78, Opps. 33

### TAYLOR MURRAY NAMED PRESEASON ALL-SEC SECOND TEAM BY LEAGUE COACHES

Junior guard Taylor Murray was tabbed to the Preseason All-Southeastern Conference Second Team by league coaches. Murray earned the honor due to her impressive sophomore season where she started all 30 games she played and averaged 12.2 points per game while leading the Wildcats with 3.9 assists per game. The 5-foot-6 guard ranked second on the team with 4.9 rebounds per game with a team-best 61 steals. During the season, Murray set or tied individual single-game highs in points (29), field-goals made

## DOUBLE-DOUBLES

### TAYLOR MURRAY: 2 CAREER (2 SEASON)

2017-18 (1)

18 pts - 12 rebounds at Montana, 11-16-17

2016-17 (2)

11 pts - 13 rebounds at LSU, 1-19-17

18 pts - 13 rebounds at Missouri, 1-30-17

### Maci Morris: 1 CAREER (1 SEASON)

2017-18 (2)

10 points, 10 rebounds vs. Gardner-Webb, 11-12-17

## CAREER 20-POINT GAMES

Taylor Murray		3
21	at Louisville	12/4/16
23	at Tennessee	1/1/17
29	at South Carolina	2/26/17
22	vs. Sacramento State	11/10/17
Makenzie Cann		1
20	vs. New Hampshire	11/17/16
Maci Morris		1
29	vs. Arizona State	12/11/16

## MITCHELL TOP 10 SEC WINS

Kentucky women's basketball head coach Matthew Mitchell has had a great tenure with the Wildcats and earned 102 career wins in Southeastern Conference play. That win total ranks him second amongst active coaches in the league in career SEC head coaching wins and 10th all-time. An updated career win list is below.

- 306 - Pat Summitt, Tennessee
  - 273 - Andy Landers, Georgia
  - 141 - Van Chancellor, Ole Miss/LSU (100 - Ole Miss / 41 - LSU)
  - 139 - Joe Ciampi, Auburn
  - 132 - Sue Gunter, LSU
  - 120 - Sharon Fanning, Kentucky/Miss. State (29 - Kentucky / 96 - Mississippi State)
  - 115 - Melanie Balcomb, Vanderbilt
  - 113 - Carol Ross, Florida/Ole Miss (84 - Florida / 29 - Ole Miss)
  - 108 - Gary Blair, A&M/Arkansas\* (54 - A&M / 54 - Arkansas)
  - 102 - MATTHEW MITCHELL, KENTUCKY\***
  - 97 - Dawn Staley, South Carolina\*
  - 96 - Rick Moody, Alabama
- \* denotes active coach



## MATTHEW MITCHELL ERA

(2007-Present)

	<b>Total</b>
Home Games.....	148-29
Memorial Coliseum.....	142-23
Rupp Arena.....	6-6
Road Games.....	66-49
Neutral Sites.....	33-18
SEC Games.....	102-54
Home.....	59-18
Road.....	43-36
Regular season, non-conference.....	108-26
Home.....	79-7
Road.....	23-16
Neutral.....	6-3
vs. ranked teams in non-conference.....	12-13
SEC Tournament.....	15-10
NCAA Tournament.....	16-8
WNIT.....	3-2
Leading or tied at halftime.....	197-25
Trailing at halftime.....	47-75
Shoot 50 percent or higher.....	38-3
Shoot less than 50 percent.....	206-97
Shoot higher percentage than opp.....	178-15
Shoot lower percentage than opp.....	64-83
Shooting same percentage as opp.....	2-2
Opp. shoots worse than 50 percent.....	236-68
Opp. shoots 50 percent or higher.....	8-32
Score fewer than 60 points.....	19-39
Score 60 or more points.....	219-57
Score 70 or more points.....	159-23
Score 80 or more points.....	92-5
Score 90 or more points.....	40-1
Score 100 or more points.....	17-0
Opp. scores 30 or fewer points.....	2-0
Opp. scores 40 or fewer points.....	17-0
Opp. scores 50 or fewer points.....	55-1
Opp. scores 60 or fewer points.....	136-11
Opp. scores 70 or fewer points.....	207-36
Opp. scores 80 or fewer points.....	229-69
Opp. scores 60 or more points.....	103-73
Opp. scores 70 or more points.....	33-54
Opp. scores 80 or more points.....	5-27
Opp. scores 90 or more points.....	2-8
Outrebounds or same as opponent.....	166-39
Outrebounded by opponent.....	78-61
Commits fewer turnovers than opp.....	197-52
Commits same turnovers as opp.....	3-7
Commits more turnovers than opp.....	44-41
Force 30 or more turnovers.....	30-1
Makes 6 or more 3-pointers.....	123-23
Makes 5 or fewer 3-pointers.....	121-77
Game decided by 10 pts or fewer.....	95-59
Game decided by 1-5 pts.....	46-25
Game decided by 11-15 pts.....	37-18
Game decided by 16+ pts.....	108-15
Overtime games.....	9-4
Televised games.....	155-70
Games vs. ranked opponents.....	47-53
Games vs. top 10 ranked opponents.....	16-32
Games following a loss.....	66-23
Games following a win.....	166-76
More points in the paint than opp.....	179-26
Fewer points in the paint than opp.....	57-64
Same points in the paint than opp.....	8-10
More bench points than opp.....	179-43
Fewer bench points than opp.....	62-56
Same bench points as opp.....	3-1
More 2nd-chance points than opp.....	162-51
Fewer 2nd-chance points than opp.....	63-41
Same 2nd-chance points as opp.....	19-8
On Monday.....	11-8
On Tuesday.....	10-5
On Wednesday.....	15-2
On Thursday.....	61-31
On Friday.....	35-5
On Saturday.....	24-12
On Sunday.....	88-37
In November.....	57-8
In December.....	45-16
In January.....	59-28
In February.....	45-26
In March.....	38-21
In April.....	0-1

## STARTING LINEUP RECORDS

Team	F	C	G	G	G	Result
Sacramento St	Harrison	Rice	Cann	Murray	Morris	W, 101-70
Gardner-Webb	Harrison	Rice	Cann	Murray	Morris	W, 72-34
Montana	Harrison	Rice	Cann	Murray	Morris	W, 71-54
Wash. State						
Morehead St.						
Marshall						
Baylor						
Tenn. Tech						
Evansville						
FGCU						
Miami						
UofL						
Cal						
MTSU						
Tennessee						
TAMU						
Georgia						
Florida						
Vandy						
S. Carolina						
Alabama						
Arkansas						
Auburn						
LSU						
Missouri						
Miss. State						
Arkansas						
S. Carolina						
Ole Miss						
Miss. State						

### Record by Lineups:

<b>1.</b>	<b>Harrison</b>	<b>Rice</b>	<b>Cann</b>	<b>Murray</b>	<b>Morris</b>	<b>3-0</b>
-----------	-----------------	-------------	-------------	---------------	---------------	------------

**bold** indicates last starting lineup used

(9), field-goals attempted (15), free-throws made (10), free-throws attempted (10), 3-point field goals made (2), 3-point field goals attempted (6), offensive rebounds (8), defensive rebounds (11), total rebounds (13), assists (11), blocks (1), steals (6) and minutes (44).

The native of Odenton, Md., scored 10 or more points 18 times last season with 15 or more points 11 times and three 20-plus scoring games. The guard had two point-rebound double-doubles last year with 11 points and 13 rebounds at LSU before 18 points and 13 rebounds at Missouri. Arguably her best game came against South Carolina where she scored a career-high 29 points with four rebounds and five assists. Murray flirted with a triple-double on multiple occasions with 18 points, seven assists and five rebounds against Vanderbilt before 16 points, six steals, five assists and eight rebounds against Arkansas.

### WILDCATS PICKED TO FINISH SIXTH IN SEC

The Southeastern Conference announced its Preseason Coaches Poll on Nov. 1, as voted by league coaches and Kentucky was picked to finish sixth in the league, while 2017 SEC champion South Carolina was tabbed as the top team in the conference.

The complete poll and number of votes for each team is as follows: 1. South Carolina; 2. Mississippi State; 3. Missouri; 4. Texas A&M; 5. Tennessee; 6. Kentucky; 7. LSU; 8. Georgia; 9. Alabama; 10. Vanderbilt; 11. Auburn; 12. Ole Miss; 13. Florida; 14. Arkansas

### KENTUCKY NO. 25 IN AP POLL, WILL FACE TOUGH SCHEDULE

Kentucky is No. 25 in The Associated Press Top 25 and receiving votes in the USA Today/Coaches' Preseason Top 25. UK started the season receiving votes in each, marking the eighth straight season the Wildcats have been ranked or receiving votes in both major preseason rankings. UK will have a chance to move up the rankings all season long as it is currently scheduled to play 16 games against teams either ranked or receiving votes in either poll, including six games against preseason top-10 teams.

In the AP Top 25, UK is scheduled to play at No. 3 Baylor, two games vs. No. 4 South Carolina, two games vs. No. 7 Mississippi State, vs. No. 5 Louisville, No. 13 Tennessee, at No. 23 Missouri, at No. 19 Texas A&M and vs. No. 20 California. UK is also scheduled to play Miami (Fla.), Florida and Alabama, who are each receiving votes in the listing.

In the Coaches' Top 25, UK will play two games vs. No. 2 South Carolina, at No. 3 Baylor, two games vs. No. 4 Mississippi State, vs. No. 10 Louisville, at No. 16 Missouri, vs. No. 18 Tennessee, vs. No. 24 Miami (Fla.) and vs. No. 25 California. The Wildcats also have games against Texas A&M, LSU, Florida Gulf Coast and

## TOP-10 HOME GAMES ATTENDANCES (! INCLUDES RUPP ARENA)

1.	23,705	Duke !	12/22/13
2.	22,075	Baylor !	11/17/14
3.	18,488	DePaul !	12/07/12
4.	17,150	Duke !	12/20/15
5.	14,508	Duke !	12/08/11
6.	14,425	Louisville !	12/10/15
7.	13,689	Tennessee !	01/26/06
8.	10,622	Old Dominion	02/05/83
9.	10,390	Rutgers !	01/12/80
10.	10,192	Louisville !	12/28/06

## TOP-10 MEMORIAL COLISEUM ATTENDANCES

1.	10,622	Old Dominion	02/06/83
2.	8,429	Tennessee	01/29/04
3.	8,223	Auburn	02/18/83
4.	8,200	Tennessee	02/09/83
5.	8,130	Tennessee	01/23/00
6.	7,965	Tennessee	03/03/13
7.	7,963	Louisville	12/11/13
8.	7,961	Tennessee	01/12/12
9.	7,951	Louisville	12/04/11
10.	7,888	Florida	01/22/12

## HOME COURT WINNING STREAKS (INCLUDES RUPP ARENA)

	Games	Began	Ended
1.	34	Feb. 13, 2011	Feb. 3, 2013
2.	30	Feb. 12, 1980	Jan. 31, 1982
3.	25	March 19, 2009	Jan. 9, 2010
4.	19	Feb. 23, 1982	Feb. 9, 1983
5.	14	Jan. 31, 1990	Jan. 27, 1991
6.	13	Jan. 30, 1984	Jan. 13, 1985
	13	March 2, 2014	Jan. 29, 2015
8.	11	Feb. 7, 1987	Jan. 7, 1988
	11	Feb. 10, 1979	Feb. 2, 1980
10.	10	Nov. 19, 2004	Jan. 27, 2005

## KENTUCKY ATTENDANCE AVERAGES LAST 13 YEARS

Year	Total	(Games) Rank	Avg. PG
2003-04	72,533	(14 games) 16th	5,182
2004-05	90,663	(19 games) 20th	4,772
2005-06	77,411	(15 games) 20th	5,161
2006-07	87,943	(15 games) 13th	5,863
2007-08	85,769	(18 games) 23rd	4,756
2008-09	75,194	(17 games) 21st	4,423
2009-10	95,615	(17 games) 14th	5,624
2010-11	95,453	(15 games) 11th	6,364
2011-12	113,068	(18 games) 13th	6,282
2012-13	104,447	(17 games) 11th	6,144
2013-14	121,089*	(18 games) 9th	6,727*
2014-15	108,436	(17 games) 8th	6,379
2015-16	116,164	(18 games) 8th	6,454
2016-17	104,252	(20 games) 14th	5,213

\* - SCHOOL RECORD



### Memorial Coliseum (8,000)

- The Cats own a 432-152 (.739) overall in the historic building, including a 142-23 (.860) mark under head coach Matthew Mitchell.
- UK is 128-15 (.895) at home over the last nine seasons (including 7 games in Rupp Arena).
- The Cats have ranked in the top 25 nationally, and in the SEC's top four, in average attendance 14 straight seasons. UK ranked 14th nationally in average attendance with 5,213 fans per game last year.
- UK's 13-game home winning streak (the sixth-longest in school history) was snapped on Jan. 29, 2015 vs. Tennessee.



### Rupp Arena (23,000)

- The Cats are 25-15 all-time in Rupp Arena (.625), including a 6-7 mark under Matthew Mitchell. (NOTE: UK's game against Washington in the 2016 Sweet 16 did not count as a home game, but does count in UK's record in the all-time building.)
- The second-highest attendance mark in school history was set on Nov. 17, 2014 when 22,075 fans witnessed UK's upset of No. 8/9 Baylor, 74-64.
- For the first time since the women's basketball Final Four in 1986, Rupp Arena and the University of Kentucky have been selected to host the NCAA regional tournament in 2016, 2017 and 2018 for women's basketball.
- Kentucky will play three games in Rupp Arena this season, squaring off against SEC foes South Carolina, LSU and Tennessee.

## 2016-17 NATIONAL AVERAGE ATTENDANCE

Team	Total	Avg	Games
1. So. Carolina	196,431	12,277	16
2. Tennessee	146,948	9,184	16
3. Iowa State	173,018	9,106	19
4. UConn	142,213	8,888	16
5. Louisville	165,115	8,256	20
6. Notre Dame	137,764	8,104	17
7. Miss. St.	86,328	6,641	13
8. Michigan St.	84,152	6,011	14
9. Purdue	89,099	5,940	15
10. Baylor	106,812	5,934	18
11. Maryland	97,497	5,735	17
12. Gonzaga	84,266	5,618	15
13. Ohio St.	93,921	5,218	18
14. Kentucky	104,252	5,213	20
15. Kansas St.	92,454	5,136	18

## 2016-17 NATIONAL TOTAL ATTENDANCE

Team	Total	Avg	Games
1. So. Carolina	196,431	12,277	16
2. Iowa State	173,018	9,106	19
3. Louisville	165,115	8,256	20
4. Tennessee	146,948	9,184	16
5. UConn	142,213	8,888	16
6. Notre Dame	137,8+5	8,104	17
7. Baylor	106,812	5,934	18
8. Kentucky	104,252	5,213	20
9. Maryland	97,497	5,735	17
10. Ohio State	93,921	5,218	18



## MEDIA REQUESTS

### CREDENTIAL REQUESTS

Requests for media credentials and parking passes for 2017-18 Kentucky WBB home games should be made to Evan Crane at wesley.crane@uky.edu. Requests for UK away games should go to the media relations office of the home team.

### UK WEBSITE -- UKATHLETICS.COM

Visit the official University of Kentucky Athletics web site at ukathletics.com. The official Southeastern Conference web site is secsports.com. A more interactive web site can be found at kentuckywomensbasketball.com.

### GET LIVE STATS ON YOUR LAPTOP!

The University of Kentucky has partnered with StatBroadcast Systems to provide stats technologies, namely its StatMonitr wireless stat monitors and online media stats, at Kentucky home women's basketball games this season.

To access live game stats on your personal laptop, go to: <http://kentucky.statbroadcast.com>.

### UK MEDIA CONFERENCE

Each game week in the UK Media Room head coach Matthew Mitchell will hold a press conference to discuss the upcoming game. Selected players are available following the press conference. Check with UK media relations for exact times and dates. Selected quotes from the media conference are available via ukathletics.com.

### WEEKDAY INTERVIEWS

Interview Policies-General — All interviews with Kentucky women's basketball players or staff members must be arranged through the Media Relations office. Media should never contact a player or coach directly. In accordance with NCAA time management legislation, player interview requests must be submitted by Sunday at noon for the following week. Team locker rooms, and other team quarters are private team areas. Media members are not permitted in these areas unless accompanied by appropriate University personnel.

### POST GAME INTERVIEWS

The visiting team coach and select players will be available in the Memorial Coliseum media room following a 10-minute cooling off period. UK's Matthew Mitchell will follow the visiting coach and UK players will be last. A member of the UK Media Relations staff will solicit media requests for players at the final media timeout. After the game, those players will be escorted to the interview area along with their coaches by a member of that school's media relations office as well as a representative of UK Media Relations. Quotes will be available for all working media in the UK Media Relations Office and on the official UK web site, ukathletics.com.

### PRACTICE SCHEDULE

Practice usually runs from 3:30 - 6 p.m. ET in the Joe Craft Center. Practices are open to the media. However, we ask you to please call in advance due to changing practice schedules during the season. Contact Evan Crane for further information.

Middle Tennessee, who are all receiving votes in the poll.

### RICE LOOKING TO END CAREER WITH BEST SEASON

Heading into her final season at Kentucky there is no question that senior post Alyssa Rice wants to have her best year yet and so far preseason practice has given a sign her best is here. Rice has impressed the coaches this preseason with her play, especially her physicality around the basket and leadership to all.

In the season opener vs. Sacramento State, Rice had four points and seven rebounds with a block. She followed that with a team-best 11 points against Gardner-Webb with eight rebounds and two blocks.

The native of Reynoldsburg, Ohio, has played in 96 career games with 46 career starts, averaging 3.4 points per game and 3.4 rebounds per game throughout her career. Last season, Rice averaged 4.2 points per game and 4.5 rebounds per game, playing 33 games with 30 starts. There is no doubt her production should increase this season.

### RICE ON NCAA D1 WBB COMPETITION COMMITTEE

Alyssa Rice has been appointed to represent the Southeastern Conference on the NCAA Division I Women's Basketball Competition Committee. Her term begins immediately and continues through June 30, 2018. The NCAA Division I Women's Basketball Oversight Competition Committee is comprised of 12 members and is responsible for reviewing specific areas, and as appropriate, develop and recommend strategic principles in order to maintain the women's college basketball game true to its original rules, playable, watchable, popular and relevant. The committee reviews the areas of student-athlete health and safety, sportsmanship, integrity, game operations, game presentation, technology, and statistical trends.

### RICE NAMED CHAIR OF SEC LEADERSHIP COUNCIL

Alyssa Rice has been named by her peers in the league as the chair of the 2017-18 Southeastern Conference Women's Basketball Leadership Council. The SEC Basketball Leadership Council met in September in Birmingham with each men's and women's basketball program sending one representative. Rice was selected by the women's council as the chair and will represent the SEC as an SEC autonomy representative during the NCAA Convention in January. She will also attend a portion of the SEC Spring Meetings in May, and potentially the SEC Athletics Directors meeting in March. In 2016, the SEC introduced new Student-Athlete Leadership Councils in the sports of football and men's and women's basketball in which, in addition to the conference's longstanding Student-Athlete Advisory Council (SAAC), provide student-athletes with additional opportunities to engage with campus leaders and conference office staff.

### RICE ON LISA LESLIE AWARD WATCH LIST

The Naismith Memorial Basketball Hall of Fame and the Women's Basketball Coaches Association announced Alyssa Rice as one of 20 watch list candidates for the 2018 Lisa Leslie Award. Named after the three-time All-American and 1994 National Player of the Year, the annual award in its inaugural year recognizes the top centers in women's NCAA Division I college basketball.

### MURRAY, MORRIS READY TO TAKE NEXT STEP

Last year was another good season for both Taylor Murray and Maci Morris, who both averaged

## MITCHELL IN THE SEC

**SEC Record Under Mitchell:** 102-53 (.658)

Home: 59-18      Away: 43-35

### SEC Standings in the Mitchell Era:

2008: 4th (8-6) 4-3 (H) - 4-3 (A)  
2009: 10th (5-9) 3-4 (H) - 2-5 (A)  
2010: 2nd (11-5) 8-0 (H) - 3-5 (A)  
2011: 2nd (11-5) 6-2 (H) - 5-3 (A)  
2012: 1st (13-3) 8-0 (H) - 5-3 (A)  
2013: 2nd (13-3) 7-1 (H) - 6-2 (A)  
2014: 4th (10-6) 5-3 (H) - 5-3 (A)  
2015: 4th (10-6) 6-2 (H) - 4-4 (A)  
2016: 4th (10-6) 6-2 (H) - 4-4 (A)  
2017: 3rd (11-5) 6-2 (H) - 5-3 (A)

**SEC Championships:** 2012

**SEC Coach of the Year:** 2010, 2012

### SEC Player of the Year:

Victoria Dunlap: 2010 and 2011  
A'dia Mathies: 2012 and 2013

### SEC Freshman of the Year:

A'dia Mathies: 2010  
Bria Goss: 2012

### SEC Defensive Player of the Year:

Victoria Dunlap: 2011

### SEC 6th Woman of the Year:

Keyla Snowden: 2012 (Co-player)  
Jen O'Neill: 2015 and 2014 (Co-player)

### All-SEC First Team Members:

Victoria Dunlap: 2010 and 2011  
A'dia Mathies: 2012 and 2013  
DeNesha Stallworth: 2013  
**Makayla Epps: 2015 and 2016 and 2017**  
**Evelyn Akhator: 2017**

### All-SEC Second Team Members:

Sarah Elliott: 2008  
Samantha Mahoney: 2008  
Victoria Dunlap: 2009  
Eleia Roddy: 2009  
A'dia Mathies: 2010  
Samarie Walker: 2013  
Jennifer O'Neill: 2014 and 2015  
DeNesha Stallworth: 2014  
**Janee Thompson: 2016**  
**Evelyn Akhator: 2016**

### All-SEC Freshman Team:

Victoria Dunlap: 2008  
Amber Smith: 2008  
A'dia Mathies: 2010  
Bernisha Pinkett: 2011  
Bria Goss: 2012  
Linnae Harper: 2014  
Alexis Jennings: 2015  
**Maci Morris: 2016**

### SEC All-Defensive Team:

Victoria Dunlap: 2010 and 2011  
A'dia Mathies: 2011 and 2012  
Samarie Walker: 2013  
Linnae Harper: 2015

## 2017-18 HONORS

### Taylor Murray

- Preseason All-SEC Second Team by league coaches

### Alyssa Rice

- SEC WBB Leadership Council Chair
- SEC Representative for NCAA Competition Committee
- Lisa Leslie Award Watch List

## COMEBACK CATS

The Cats are 94-59 (.614) in "close games" (games decided by 10 points or fewer) under Matthew Mitchell.

### BIGGEST COMEBACKS

1. -19 Miami (Ohio), 53-34, 16:27 in second half, (won, 77-71) 11/21/00
2. -18 Miami (Ohio), 14:35 in second half, (won, 108-102, OT) 12/21/02
- 18 MTSU, 31-13, 3:54 in first half (also down 46-29, 14:29 in 2nd half) (won, 68-66) 1/8/89
4. -17 Oregon State, 38-21, 2:29 in first half (won 73-70) 11/25/04
- 17 WKU, 30-47, 17:09 in second half, (won 76-63) 12/22/03
- 17 Villanova, 19-2, 11:52 in first half (won 63-54) 12/29/96
7. -16 Louisville, 32-16, 6:44 in first half (won 77-68) 12/7/14
- 16 South Carolina, 30-46 in second half, (won, 78-74) 2/14/13
- 16 Vanderbilt, 53-37, 11:19 in second half (won, 74-68) 1/6/89
- 16 Ole Miss, 24-8, 6:51 in first half (won, 69-61) 2/8/07
11. -15 Mississippi State, 54-39, 15:18 in second half (won, 76-67) 3/6/15
12. -14 Baylor, 40-26, 18:31 in the second half (won, 74-64) 11/17/14
- 14 Louisville, 21-7, 11:16 in first half (won 69-64) 12/1/13
- 14 Louisville, 35-21, 15:08 in second half (won, 48-47) 2/2/12
- 14 Florida, 20-6, 12:46 in first half (won, 71-67) 3/2/12
- 14 Mississippi St., 40-26, 18:52 in second half, (won, 76-65) 3/6/10
- 14 Xavier, 40-26, 18:49 in second half (won, 67-62) 3/24/05
- 14 Toledo, 32-18, 5:43 in second half (won, 85-76) 3/24/90
- 14 Auburn, 22-8, 8:36 in first half (won 91-90 2OT) 2/2/86

### BIGGEST COMEBACKS IN THE MITCHELL ERA

1. -16 Louisville, 32-16, 6:44 in first half (won 77-68) 12/7/14
- 16 South Carolina, 30-46 in second half, (won, 78-74) 2/14/13
3. -15 Mississippi State, 54-39, 15:18 in second half (won, 76-67) 3/6/15
4. -14 Baylor, 40-26, 18:31 in the second half (won, 74-64) 11/17/14
- 14 Louisville, 21-7, 11:16 in first half (won 69-64) 12/1/13
- 14 Louisville, 35-21, 15:08 in second half, (won, 48-47) 12/2/12
- 14 Florida, 20-6, 12:46 in first half, (won, 71-67) 3/2/12
- 14 Mississippi St., 40-26, 18:52 in second half, (won, 76-65) 3/6/10
9. -13 Auburn, 25-12, 9:52 in first half, (won, 73-71) 1/19/14
10. -12 Arizona State, 37-25, 5:01 in second half, (won, 68-64ot) 11/15/15
- 12 Cincinnati, 18-6, 13:18 in first half, (won, 58-55) 11/17/08
11. -11 Middle Tenn., 52-41, 15:41 in second half, (won 81-72) 12/29/10
- 11 Ole Miss, 36-25, 00:27 in first half, (won 74-68) 1/27/11
- 11 Middle Tenn., 23-12, 9:54 in first half (won, 68-66 OT) 3/21/08
- 11 Arkansas, 30-19 in first half (won, 80-74 OT) 2/7/13
- 11 DePaul, 21-10 in first half (won, 96-85) 12/12/13

double-figure scoring with Murray leading the team in steals and assists, while Morris hit a team-best 53 3s and paced the team in free-throw percentage. However, with several upperclassmen gone from last season, Murray and Morris are going to have to take on more of a scoring and leadership role for the Wildcats this season. Mitchell believes both are ready to take the next step.

If the first few games are any indication, that has happened as Murray led all scorers with 22 points, adding five rebounds and three assists vs. Sacramento State. Murray went 8-of-12 from the field, 1-of-3 from 3 and 5-of-5 from the free-throw line in the game. Morris was also impressive with 12 points, going 4-of-8 from the field, 2-of-3 from 3 and 2-of-2 from the free-throw line.

Both players also shined against GWU and Montana. Against GWU, Morris posted her first career double-double with 10 points and 10 rebounds while Murray had eight points and four rebounds with three assists. Against the Lady Griz, Murray recorded her third career double-double with 18 points and 12 rebounds, while Morris scored 16 points and hit three 3s.

### CANN, MORRIS LEADING UK FROM OUTSIDE

Kentucky returns 76.9% of its 3-point production from last season and a large part of that is due to junior guard Maci Morris and senior guard Makenzie Cann. The two showed why in the season opener with Cann going 4-for-6 from long range while Morris went 2-for-3. Cann followed by going 2-of-4 vs. GWU. So far this season, Cann is 8-of-15 from long range while Morris is 5-of-14.

Morris led Kentucky with 53 made 3s last season, hitting 32.3 percent from long range. Morris is only the second player in school history to have 100 or more 3s made at the conclusion of their true sophomore season. For her career, Morris is 104-297 from long range needing just six more to rank tied for the 10th most career 3s hit in program history.

Cann went 42-for-152 from long range last season which was the second most 3s on the team and has hit 99 in her collegiate career (hit 51 her freshman season at Cincinnati). Cann's best performance came against New Hampshire when she hit six 3s and scored a season-best 20 points. She hit at least one 3 in

23 of her 32 games played last year.

Kentucky's 169 3-pointers made last season ranked sixth most in a season in UK history. The top six 3s hit in a season have all occurred under Matthew Mitchell.

### ROPER FITTING RIGHT IN FROM THE START

Watch the Kentucky women's basketball team huddle together right before time expires on the 60-minute pregame clock and you will see guard Jaida Roper in the middle of the huddle getting her teammates pumped up for the game. That is just how the fiery guard operates, never shy and always looking to encourage her teammates. That mentality has spilled over to her development on the court as well.

The native of Memphis, Tenn., played in 32 games last season with two starts. She started her sophomore season strong by scoring a career-high nine points with three assists vs. Sacramento State. Roper was 3-for-6 from the field, 1-for-2 from 3 and 2-for-2 from the free-throw line. She followed by breaking that career high with 10 points and two assists against GWU in 25 minutes. Roper recorded her third straight career game at Montana with 14 points, five rebounds and three assists, making several key shots late in the shot clock.

### MITCHELL CALLS JESSICA HARDIN A "GODSEND"

Matthew Mitchell has not shied away on his feelings about redshirt senior and Bellarmine transfer Jessica Hardin. The guard started her college career at Division II Bellarmine before transferring to UK academically. The native of Monticello, Ky., played intramural basketball for several years before trying out for the team in the summer of 2016 and being awarded a scholarship. Hardin played in 16 games, averaging 12.3 minutes per game with 3.1 points per game last season. She hit 12-of-33 from 3 and 15-of-52 overall. Hardin missed the first 13 SEC games as she went through concussion protocol. She returned vs. Florida, playing three minutes and hitting a 3. Mitchell calls Hardin, who came into the program at a time of upheaval, a "Godsend".

## ANYAGALIGBO TO MISS 2017-18 DUE TO INJURY

Junior forward Ogechi Anyagaligbo will miss the 2017-18 season due to sustaining a torn ACL in Kentucky's exhibition game vs. Southern Indiana. Anyagaligbo, who missed the 2016-17 season due to NCAA Transfer rules, was expected to add depth in the post this season. She transfer to UK in the summer of 2016 after being named the America East Conference Rookie of the Year following her freshman season at Stony Brook.

## NEWCOMERS TO ADD DEPTH IN 2017-18

Through its success in 2016-17 the Wildcats battled depth only regularly playing seven players. That appears to be fixed heading into 2017-18 as the Wildcats' roster is 13 deep and Coach Mitchell believes he will have all the depth he needs to be successful. Part of that fix is the emergence of five newcomers.

UK added junior college transfer Amanda Paschal, who won a national championship at Gulf Coast State College her freshman season before sitting out last year due to injury. Kentucky also adds four true freshmen who were stars in high school in Dorie Harrison (6-2, F/C, Nashville, Tenn.), KeKe McKinney (6-1, G/F, Knoxville, Tenn.), Kameron Roach (5-6, G, Hopkins, S.C.) and Tatyana Wyatt (6-3, F, Columbus, Ga.). Mitchell describes all five as extremely athletic with a strong work ethic and all four are expected to see minutes this season.

## MITCHELL MOVES INTO ELITE SEC COMPANY

Kentucky's dominating 89-57 victory over Ole Miss on Jan. 26, 2017 was an historic one for Kentucky head coach Matthew Mitchell. The win was his 97th all-time in SEC play as a head coach, which ranked him 10th all-time on the SEC's career wins list. UK's win at Arkansas on Feb. 16 was Mitchell's 100th career SEC win.

Since arriving in Lexington in 2007, Mitchell has led Kentucky to unprecedented success. On top of leading UK to its first SEC Regular Season Championship in 30 years in 2012, Mitchell has four SEC Tournament title game appearances, nine top-four finishes in the league and has coached 18 all-conference performances, including four SEC Player of the Year honors.

## SHOOTING WORK CONTINUES TO PAY OFF

After the 2014-15 season, Coach Mitchell put a point of emphasis on Kentucky becoming a better shooting team, asking his Wildcats to increase their field goal percentage from that season - which was 38% - to 42-45%.

The 2015-16 team responded by putting in a ton of offseason work and working hard on their shooting during preseason practice. It worked as the Wildcats shot 45.5% from the field that season, which was the highest field-goal percentage for a UK team since 1989-90, while its 35.6% from 3 was the highest since 2002-03. Overall, UK ranked top-10 in single-season UK history in points, scoring margin and field goals made, while its 154 3-pointers made and 475 assists just missed the top 10 by two 3-pointers and five assists.

The offensive showcase was noticed on the national level in 2015-16 as Kentucky ranked 24th in the nation in scoring offense, 16th in scoring margin, 18th in field goal percentage and 26th in 3-point field goal percentage. And although the turnovers and steals didn't come in at the pace they had in the past, UK's defense stayed fundamentally strong, limiting opponents to 60.6 points per game and a .372 mark from the field with 131 blocks, 507 turnovers forced and 222 steals.

The Wildcats strong shooting continued last season as UK hit 42.7% from the field, which was the third highest field-goal percentage since 2005-06. UK hit 169 3s last year, which was the sixth most in a single season in program history.

## AKHATOR, EPPS SELECTED IN WNBA DRAFT

Evelyn Akhator and Makayla Epps began their professional careers in the Women's National Basketball Association as both were selected in the 2017 WNBA Draft. Akhator was selected third overall by the Dallas Wings, becoming the highest draft pick in school history. Akhator is the third player in program history to be a first-round selection and the first since A'dia Mathies in 2013. Epps became the fifth Matthew Mitchell coached player to be selected, going 33rd overall to the Chicago Sky.

Akator and Epps are the first Kentucky players selected in the WNBA Draft since DeNesha Stallworth was taken 25th overall in the 2014 draft. In his 10-year tenure with the Wildcats, Matthew Mitchell has had five players selected in the WNBA Draft. Victoria Dunlap was the second-ever UK player selected back in 2011, while Mathies was previously the highest pick in school history going 10th in 2013.

## KENTUCKY VS. RANKED OPPONENTS

In order to be one of the nation's best, you have to play against the nation's best. In 2016-17, Kentucky was 3-7 against ranked opponents with wins against then-No. 14 Miami (Fla.), then-No. 12 Oklahoma and then-No. 3 Mississippi State. In 44 years of varsity women's basketball, Kentucky has 88 wins over ranked opponents, including 47 of those wins coming under Matthew Mitchell.

## MITCHELL INKS 2 HIGH SCHOOL STARS TO NLI'S

Matthew Mitchell continues to sign some of the best high school basketball players in the country to play at Kentucky as he inked high school stars Blair Green (Harlan, Ky.) and Rhyne Howard (Cleveland, Tenn.) to National Letters of Intent on Nov. 8.

Green is a four-start prospect by ESPN.com which ranks her as the ninth best wing in the 2018 class. Green had a great junior season for Harlan County High School averaging 23.1 points per game, 7.2 rebounds per game and hit 53.8% from the field, including 43.8% from 3.

All-Star Girl's Report ranks Howard as the eighth best player overall in the 2018 class while ESPN tabbed her the 10th best guard in the class. Howard averaged 19.6 points per game, 7.2 rebounds per game, 4.6 steals per game, 3.8 assists per game and 1.2 blocks per game as a junior at Bradley Central High School. She scored 647 points last year for the Bears, hitting 55 percent from the field, 40 percent from 3 and 74 percent from the free throw line.

"This is an exciting day for me and my staff as we welcome two fantastic people and basketball players to the Big Blue Nation," Mitchell said. "Both Blair and Rhyne are everything you look for in a player when you hit the recruiting trail. They both are outstanding athletes and playmakers that will add versatility to our team. Blair and Rhyne have terrific personalities, are fun to be around and are all-around tremendous additions to our program. We are just thrilled that both of them are Wildcats."

## UK IN THE SEC/NCAA STATS

Category	Team (as of Nov. 16, 2017)		
	NCAA	SEC	Stat
Ast/TO Ratio	27	2	1.59
Assists	44	2	46
Assists/game	122	7	15.3
Blocks	37	4	13
Blocks/game	92	8	4.3
Fewest Fouls	261	11	53
Fewest TOs	82	1	29
FG%	82	7	45.3
FG% defense	28	3	30.6
FT Attempts	101	7	51
FT Made	60	5	41
FT%	27	1	80.4
Personal Fouls/game	130	8	17.7
Rebound margin	70	5	10.0
Rebounds	21	2	136
Rebounds/game	63	5	45.33
Scoring Defense	44	4	52.7
Scoring Margin	38	5	28.7
Scoring Offense	57	5	81.3
Steals	217	10	16
Steals/game	302	11	5.3
3FG% defense	21	1	20.3
3FG attempts	43	2	64
3FG made	46	2	21
3FG/game	115	5	7.0
3FG%	159	10	32.8
TO margin	95	6	4.33
TOs Forced	283	13	14.00
TOs/game	7	1	9.7
W-L%	1	1	100.0

Category	Individual		
	NCAA	SEC	Stat
Ast-TO ratio- Murray	48	3	4.5
Blocks- Morris	97	6	4
Rice	97	6	4
Blocks/game- Morris	220	14	1.3
Rice	220	14	1.3
Dbls-Dbls- Morris	44	5	1
Murray	44	5	1
FG Atts.- Murray	118	8	35
FG Made- Murray	127	11	16
Final pts- Murray	87	9	48
FT Made- Murray	66	8	13
FT%- Murray	1	1	100.0
Rebs- Rice	87	9	24
Harrison	125	12	22
Rebs./game	209	13	8.0
3FG Made- Cann	45	4	8
3FG/game- Cann	148	6	2.67
3FG%- Cann	104	4	53.3



## STAT SUPERLATIVES

Here are some UK career statistical superlatives among current players:

### Most Games Played:

96 Alyssa Rice

### Most Games Started:

69 by Maci Morris

### Consecutive Games Started:

69 by Maci Morris

### Games with Double-Figure Scoring:

	2017-18	Career
Maci Morris	3	41
Taylor Murray	2	29
Makenzie Cann	2	8
Alyssa Rice	1	4
Jessica Hardin	0	1
Dorie Harrison	1	1
Tatyana Wyatt	1	1
Jaida Roper	2	2

### Current Streak of Consecutive Games with Double-Figure Scoring:

8 by Maci Morris

2 by Jaida Roper

1 by Taylor Murray

### Games with Double-Figure Rebounding:

	2017-18	Career
Taylor Murray	1	3
Maci Morris	1	1

### Consecutive Games with Double-Figure Rebounding:

1 by Taylor Murray

### Games with a Double-Double:

	2017-18	Career
Taylor Murray	1	3
Maci Morris	1	1

### Consecutive Games with Double-Double:

1 by Taylor Murray

### Games with a Triple-Double:

	2017-18	Career
n/a		

### 40-point games:

	2017-18	Career
n/a		

### 30-point games:

	2017-18	Career
n/a		

### 20-point games:

	2017-18	Career
Taylor Murray	1	4
Makenzie Cann	0	1
Maci Morris	0	1

### Consecutive 20-point games:

n/a

### Consecutive Games with a 3-pointer:

3 by Makenzie Cann

1 by Maci Morris

1 by Taylor Murray

1 by Jaida Roper

### Consecutive Games with at least one steal:

4 by Taylor Murray

2 by Makenzie Cann

1 by KeKe McKinney

1 by Jaida Roper

## MITCHELL TURNS PROGRAM AROUND

In 2009-10, Coach Mitchell implemented the "40 minutes of dread" style of play. Although UK doesn't play that style as much anymore, it started Kentucky on an impressive run of success.

- Recorded an impressive 211-67 overall record, including a 128-15 mark at home.
- Won 20-plus games every year, averaging 26.5 wins over the last seven years.
- Advanced to a school-record eight straight NCAA Tournaments, including three Elite Eight trips during that span with 15 NCAA Tournament wins.
- Nine top-four SEC finishes, including winning the SEC regular season title in 2012, its first in 30 years.
- Advanced to the SEC Tournament championship game four times
- Four SEC Player of the Year Award Winners
- Two SEC Freshman of the Year Award Winners

## THE MAGIC "80"

The Wildcats hold a remarkable 338-23 (.936) record since 1974 when scoring 80 points or more. The last loss came at South Carolin on Feb. 26, 2017 when the Cats fell 95-87 in the regular-season finale. UK is 89-5 (.946) under Mitchell when scoring 80 points or more.

## UK IN OVERTIME

UK is 29-26 all-time in overtime games, including a 10-3 mark under Matthew Mitchell, who is 12-5 in his 11-year career as a head coach in extra minutes.

## KENTUCKY ALL-TIME

Kentucky is 786-515 (.603) in its 43rd year of varsity women's basketball, including 244-100 (.707) in 11 seasons under Matthew Mitchell. Win No. 750 came against Auburn on Jan. 17, 2016 in Memorial.

## CATS TABBED TO WBCA ACADEMIC TOP 25

UK ended the 2016-17 season with a 3.492 team grade point average, which ranked 24th nationally in the Women's Basketball Coaches Association's Academic Top 25 Team Honor Roll. Kentucky is the only Southeastern Conference team to make the WBCA Academic Top 25 and one of only three teams to claim the honor while also sitting top 20 in the final Association Press Top 25.

Matthew Mitchell has put an emphasis on academics since arriving on campus as the Wildcats have had a 3.0 team GPA or better each of the last eight semesters. Last fall, the Wildcats posted a 3.517 team GPA, which was the highest GPA for a semester in the Mitchell era. UK followed that with a 3.464 team GPA in the spring with four players earning 4.0s. Under Mitchell, 34 Wildcats have been tabbed to the SEC Academic Honor Roll and 100 percent of Mitchell's players have received their degrees.

## SIX CATS PLAYING OVERSEAS

Kentucky women's basketball currently has six alumnae who signed professional contracts to play overseas for the 2017-18 season.

- Azia Bishop is playing for Feko Ilgaz in Turkey.
- Bria Goss is playing for Maccabi Raanana in Israel.
- DeNesha Stallworth and Jennifer O'Neill are playing Artego Bydg. in Poland.
- Janee Thompson is playing for Mark in Sweden.
- Evelyn Akhator is playing for Dynamo NR in Russia.
- Makayla Epps will go overseas and play at some point this year.

## A WINNING INSTITUTION

Both the Kentucky men's and women's basketball team have been national contenders the past few years with great success on the court. UK has tallied a 555-119 combined record between its two programs since 2009-10. That record includes a 260-21 mark in Lexington. UK was one of three schools to have both men's and women's programs as a top four seed in the 2016 NCAA Tournament.

Both the UK men's and women's basketball teams have posted an eighth straight 20-win season in 2016-17. Kentucky is one of just three institutions (Duke and BYU) in the NCAA that have seen both their men's and women's basketball programs tally 20 or more wins in the last eight straight seasons.

## MATTHEW AND JENNA MITCHELL DONATE \$1 MILLION TO UK ATHLETICS

In June of 2014, Coach Matthew Mitchell and his wife, Jenna, pledged \$1 million over the next 10 years to the University of Kentucky Athletics Department. The donation will provide UK Athletics \$100,000 per year over the next 10 years to be used for a variety of capital projects, including updates and renovations for football. The donation is the largest ever given by a UK athletics employee to the athletics department.

Matthew and Jenna have been very active in the Lexington community since arriving in Lexington. In October 2016, Matthew and Jenna were presented the Community Service Award by the Urban League of Lexington.

## RUPP ARENA CHOSEN FOR 3 STRAIGHT NCAA REGIONAL TOURNAMENTS

For the first time since the women's basketball Final Four in 1986, Rupp Arena and the University of Kentucky hosted the NCAA regional tournament in 2016 and 2017 and will again 2018 for women's basketball. In 2018, Lexington will again play host at Rupp Arena, joined by Albany, N.Y. (Times Union Center), Kansas City, Mo. (Sprint Center) and Spokane, Wash. (Spokane Veterans Memorial Arena), with regional play taking place March 23-26.

## UK HOSTING THANKS4GIVING GAME VS. MOREHEAD ST ON NOV. 22

UK's game on Wednesday, Nov. 22 against Morehead State will be a Thanks for Giving game, encouraging fans to bring canned food items or new clothing donations to receive free admission to the game. Tip time has also changed to 2 p.m. ET at Memorial Coliseum. Fans can bring canned food items or new clothing items such as gloves, winter hats and socks to the UK Ticket Office Lexington Avenue entrance on gameday only to receive free general admission tickets to the game. Further game day information, including parking and shuttle information will be released at a later time.

## WHEN WAS THE LAST TIME ...

### SCORING

**A player scored 40+ points:** 42, Makayla Epps vs. Miss. State, 1-12-15

**A player scored 30+ points:** 30, Makayla Epps vs. Belmont, 3-17-17

**A player scored 25+ points:** 30, Makayla Epps vs. Belmont, 3-17-17

**A player scored 20+ points:** 22, Taylor Murray vs. Sac. State, 11-10-17

**Player came off the bench to score 20 or more points:** 20, Makenzie Cann vs. New Hampshire, 11-17-16

**Two players score 20 or more points in a game:** vs. Belmont, 3-17-17 (22 Evelyn Akhator, 30 Makayla Epps)

**Three players had 20 or more points in a game:** vs. Morehead St., 11-18-15 (28, Alexis Jennings; 22, Janee Thompson; 21 Makayla Epps)

**Two players score 30 points or more in a game:** n/a

**A player record five or more consecutive 20-plus point games:** 7 by Kim Denkins (27 vs. Indiana, 12-8-95; 22 vs. Florida, 12-16-95; 20 vs. Syracuse, 12-21-95; 24 vs. Miami (OH), 12-32-95; 21 vs. Duke, 12-29-95; 31 vs. N.C. State, 12-30-95; 20 vs. Ole Miss, 1-3-96)

**A player record four or more consecutive 20-plus point games:** 4 by Makayla Epps (20 vs. Ole Miss, 1-26-17; 20 at Missouri, 1-30-17; 23 vs. South Carolina, 2-2-17; 23 vs. Vandy, 2-5-17)

**A player record three or more consecutive 20-plus point games:** 3 by Makayla Epps (31 vs. South Carolina, 3/4/17; 30 vs. Belmont, 3-17-17; 21 vs. Ohio State, 3-19-17)

**A player record back-to-back 20-plus point games:** 3 by Makayla Epps (31 vs. South Carolina, 3/4/17; 30 vs. Belmont, 3-17-17; 21 vs. Ohio State, 3-19-17)

**A player record back-to-back 30-plus point games:** Makayla Epps 31 vs. S. Carolina, 3-4-17; 30 vs. Belmont, 3-17-17

**A player score 15 or more points in the 1st half:** 16, Makayla Epps vs. S. Carolina, 3-4-17

**A player score 15 or more points in the 2nd half and OT:** 16, Makayla Epps vs. Belmont, 3-17-17

**A player score 20+ points in the 1st half:** 20, Taylor Murray vs. Sacramento State, 11-10-17

**A player score 20+ points in the 2nd half and OT:** 22, Evelyn Akhator vs. Miss. State, 2-23-17

**A player hit a last-second shot to win the game:** Makayla Epps vs. Mississippi State, 2-23-17 (hit the game-winning basket with 8.7 remaining in the contest to put Kentucky up 77-75 in OT)

**A freshman score 25 points or more:** 27, Alexis Jennings vs. Tennessee State, 12-28-14

**All five starters in double figures:** vs. Oklahoma, 3-21-16

**No player scored in double figures:** vs. LSU, 1-16-03

### DOUBLE-DOUBLES

**A player record a double-double:** Taylor Murray (18pts/12rebs) at Montana, 11-17-17

**10-20 Game:** Evelyn Akhator (14pts/23rebs), vs. Ohio State, 3-19-17

**20-20 Game:** Valerie Still (42 pts/20 rbs) vs. Charleston, 12-19-82

**20-10 Game:** Evelyn Akhator (22pts/10rebs), vs. Belmont, 3-17-17

**30-10 Game:** Victoria Dunlap (33 pts/18 rbs) vs. Butler, 11-15-09

**More than one player with a double-double in the same game:** Evelyn Akhator (20 pts/11 rbs) and Taylor Murray (11 pts/13 rbs) at LSU, 1-19-17

**Three players with a double-double in the same game:** Alexis Jennings (28pts/13rebs), Evelyn Akhator (12pts, 16rebs), Makayla Epps (21pts, 11rebs, 12asts) vs. Morehead State, 11-18-15

**A player record back-to-back double-doubles:** Evelyn Akhator (3) (24pts/11rebs) vs. S. Carolina, 3-4-17; (22pts/10rebs) vs. Belmont, 3-17-17; (14pts/23rebs) vs. Ohio State, 3-19-17)

**More than one player record back-to-back double-doubles:** Victoria Dunlap (11 pts/12 rbs) and Eleia Roddy (13 pts/10 rbs) vs. NCAT, 1-1-09; Victoria Dunlap (20 pts/15 rbs) and Eleia Roddy (11 pts/10 rbs) vs. Miami (Ohio), 1-3-09

**Double-Double in Points and Rebs:** Taylor Murray (18pts/12rebs) at

Montana, 11-17-17

**Double-Double in Points and Assists:** Janee Thompson (16 pts/10 ast) vs. LSU, 2-7-16

**Double-Double in Points and Blocks:** n/a

**Double-Double in Points and Steals:** Leslie Nichols (18 pts/11 steals) vs. Louisville, 2-14-86

**A player record four or more consecutive double-doubles:** 5 by Evelyn Akhator (10pts/14rebs) vs. Washington, 3-25-16, (18pts/10rebs) vs. Miami, 11-11-16, (28pts/13rebs) vs. Albany, 11-12-16, (17pts/11rebs) vs. New Hampshire, 11-17-16, (12pts/14rebs) at Colorado, 11-19-16

**A player record five or more consecutive double-doubles:** 5 by Evelyn Akhator (10pts/14rebs) vs. Washington, 3-25-16, (18pts/10rebs) vs. Miami, 11-11-16, (28pts/13rebs) vs. Albany, 11-12-16, (17pts/11rebs) vs. New Hampshire, 11-17-16, (12pts/14rebs) at Colorado, 11-19-16

**A player record a triple-double in a game:** (2nd in school history) Makayla Epps, vs. Morehead State, (21pts, 12ast, 11 rebs) 11-18-15

**A player record a perfect game (at least five FGs made):** Makayla Epps vs. Middle Tennessee, 12-12-14 (6-of-6 FGs)

**5 or more players score in double figures:** 5 at S. Carolina (2-26-17) - Epps (10), Cann (15), Akhator (14), Murray (29), Morris (14)

**6 or more players score in double figures:** 6 vs. New Hampshire (11-17-16) - Makenzie Cann (20), Evelyn Akhator (17), Makayla Epps (14), Jessica Hardin (11), Alyssa Rice (10), Maci Morris (10)

**7 or more players score in double figures:** 8 vs. Lipscomb (11-21-13) - Stallworth (14), Walker (10), Thompson (16), Goss (18), Evans (12), O'Neill (11), Pinkett (15), Harper (12)

### FIELD GOALS

**Made 12 FG in a game:** 12, Makayla Epps vs. S. Carolina, 3-4-17

**Made 13 FG in a game:** 13, Makayla Epps vs. Washington, 3-25-16

**Made 14 FG in a game:** 18, Makayla Epps vs. Mississippi State, 1-12-15

**Made 15 FG in a game:** 18, Makayla Epps vs. Mississippi State, 1-12-15

**Made 16 FG in a game:** 18, Makayla Epps vs. Mississippi State, 1-12-15

**Made 17 FG in a game:** 18, Makayla Epps vs. Mississippi State, 1-12-15

**Made 18 FG in a game:** 18, Makayla Epps vs. Mississippi State, 1-12-15

### FIELD GOALS ATTEMPTED

**Attempted 29 FG in a game:** 30, Makayla Epps vs. Miss. State, 1-12-15

**Attempted 28 FG in a game:** 30, Makayla Epps vs. Miss. State, 1-12-15

**Attempted 26 FG in a game:** 26, Makayla Epps vs. S. Carolina, 3-4-17

**Attempted 25 FG in a game:** 26, Makayla Epps vs. S. Carolina, 3-4-17

**Attempted 24 FG in a game:** 26, Makayla Epps vs. S. Carolina, 3-4-17

**Attempted 23 FG in a game:** 23, Makayla Epps vs. Ohio State, 3-17-19

**Attempted 22 FG in a game:** 23, Makayla Epps vs. Ohio State, 3-17-19

**Attempted 21 FG in a game:** 23, Makayla Epps vs. Ohio State, 3-17-19

**Attempted 20 FG in a game:** 23, Makayla Epps vs. Ohio State, 3-17-19

### THREE-POINTERS

**A player with 5 in a game:** 5, Makayla Epps vs. Belmont, 3-17-17

**A player with 6 in a game:** 6, Makenzie Cann, vs. New Hamp., 11-17-16

**A player with 7 in a game:** \*7, Sara Potts vs. Chattanooga, 3-20-05 (7-14)

**Attempted 10 or more in a game:** 10, Jennifer O'Neill vs. Vandy, 3-5-15

### FREE THROWS

**Made 10 FT in a game:** 10, Taylor Murray at Missouri, 1-30-16

**Made 11 FT in a game:** 12, Makayla Epps at Ole Miss, 01-21-16

**Made 12 FT or more in a game:** 12, Makayla Epps at Ole Miss, 01-21-16

**Attempted 10 FT in a game:** 10, Makayla Epps vs. Vandy, 2-5-17

**Attempted 11 FT in a game:** 12, Evelyn Akhator, vs. Wash. St., 12-21-16

**Attempted 12 FT in a game:** 12, Evelyn Akhator, vs. Wash. St., 12-21-16

**Attempted 15 or more FTs in a game:** 15, Makayla Epps vs. Miami, 11-11-16

## WHEN WAS THE LAST TIME ...

**Hit 100% (10 or more attempts):** Taylor Murray, 01-30-17 (10-10)

### REBOUNDS

**A player with 10+ rebounds:** 12, Taylor Murray at Montana, 11-16-17

**A player with 11+ rebounds:** 12, Taylor Murray at Montana, 11-16-17

**A player with 12+ rebounds:** 12, Taylor Murray at Montana, 11-16-17

**A player with 13+ rebounds:** 23, Evelyn Akhator vs. Ohio St., 3-19-17

**A player with 14+ rebounds:** 23, Evelyn Akhator vs. Ohio St., 3-19-17

**A player with 15+ rebounds:** 23, Evelyn Akhator vs. Ohio St., 3-19-17

**A player with 16+ rebounds:** 23, Evelyn Akhator vs. Ohio St., 3-19-17

**A player with 17+ rebounds:** 23, Evelyn Akhator vs. Ohio St., 3-19-17

**A player with 18+ rebounds:** 23, Evelyn Akhator vs. Ohio St., 3-19-17

**A player with 19+ rebounds:** 23, Evelyn Akhator vs. Ohio St., 3-19-17

**A player with 20+ rebounds:** 23, Evelyn Akhator vs. Ohio St., 3-19-17

**A player with 21+ rebounds:** 23, Evelyn Akhator vs. Ohio St., 3-19-17

**A player with 25+ rebounds:** \*27, Valerie Still vs. National College, 2-9-82

**A player with back-to-back games with 15+ rebounds:** Evelyn Akhator  
15 rebs at Alabama (1-12-17); 16 rebs vs. Georgia (1-15-17)

**10+ Rebs in three consecutive games:** 3, Evelyn Akhator (3-4-17 to 3-19-17)

**10+ Rebs in four consecutive games:** 5, Evelyn Akhator (3-25-16 - 11-19-16)

**10+ Rebs in five consecutive games:** 5, Evelyn Akhator (3-25-16 - 11-19-16)

**10+ Rebs in six consecutive games:** 7, Eleia Roddy (2008)

**Two players grab 10+ rebounds in a game:** 11, Akhator; 13, Murray at LSU, 1-19-17

**Three players grab 10+ rebounds in a game:** 16, Akhator; 13, Jennings; 11, Epps vs. Morehead State, 11-18-15

### ASSISTS

**A player with 8 or more assists in a game:** 11, Taylor Murray vs. Florida, 2-19-17

**A player with 9 or more assists in a game:** 11, Taylor Murray vs. Florida, 2-19-17

**A player with 10 or more assists in a game:** 11, Taylor Murray vs. Florida, 2-19-17

**A player with 11 or more assists in a game:** 11, Taylor Murray vs. Florida, 2-19-17

**A player with 12 or more assists in a game:** 12, Makayla Epps vs. Morehead State, 11-18-15

### BLOCKS

**A player with 5 or more blocks in a game:** 6, Alexis Jennings vs. Oklahoma, 3-21-16

**A player with 6 or more blocks in a game:** 6, Alexis Jennings vs. Oklahoma, 3-21-16

**A player with 7 or more blocks in a game:** \*7, DeNesha Stallworth vs. Texas A&M, 2-18-13

### STEALS

**A player with 5 steals in a game:** 6, Taylor Murray at Arkansas, 2-17-17

**A player with 6 steals in a game:** 6, Taylor Murray at Arkansas, 2-17-17

**A player with 7 steals in a game:** 7, Janee Thompson vs. TSU, 12-28-14

**A player with 8 steals in a game:** 9, A'dia Mathies vs. Neb.-Omaha, 11-23-11

**A player with 9 steals in a game:** 9, A'dia Mathies vs. Neb.-Omaha, 11-23-11

**A player with 10 steals in a game:** 10, Erica Jackson vs. ECU, 2-16-99

**A player with 11 or more steals in a game:** \*11, Leslie Nichols vs. Louisville, 2-14-86

### MINUTES

**Played every minute of a game:** 40 Makayla Epps vs. Belmont, 3-17-17

**Played over 40 minutes:** 44, Makayla Epps/Evelyn Akhator vs. Miss. State, 2-23-17

**14 Played over 45 minutes:** 45, Makayla Epps & Makenzie Cann at

Louisville, 12-4-16

**Played over 50 minutes:** 51, Kastine Evans vs. Baylor - 4OT, 12-6-13

### FOULS

**Four or more UK players foul out in a game:** Jennifer Humphrey, Sarah Elliott, Chanté Bowman, Brittany Edelen vs. Louisville, 12-3-06

### THE LAST TIME KENTUCKY...

**Won a game by 20 or more pts:** +38 (72-34) vs. GWU, 11-12-17

**Won an SEC game by 20 or more pts:** +32 (89-57) vs. Ole Miss, 1-26-17

**Won a game by 30 or more pts:** +38 (72-34) vs. GWU, 11-12-17

**Won an SEC game by 30 or more pts:** +32 (89-57) vs. Ole Miss, 1-26-17

**Won a game by 40 or more pts:** +49 (92-53) vs. UNH, 11-17-16

**Won an SEC game by 40 or more points:** +44 (97-53) vs. Auburn, 1-20-13

**Won a game by 50 or more pts:** +54 (85-31) vs. UNC Asheville, 3-19-16

**Won an SEC game by 50 or more pts:** \*+53 (100-47) vs. Miss. State, 1-17-13

**Won a game by 60 or more pts:** +68 (92-24) vs. Jackson St., 11-29-15

**Won a game by 70 or more pts:** +75 (100-25) vs. Jacksonville St., 11-15-11

**Scored 100 pts or more in a game:** 101 vs. Sacramento State, 11-10-17

**Scored 100 pts or more in an SEC game:** 108 vs. Ole Miss, 2-13-14

**Scored 90 points or more in a game:** 101 vs. Sacramento State, 11-10-17

**Scored 90 points or more in three straight games:** 96 vs. Wagner, 11-10-13; 103 vs. Georgia Southern, 11-13-13; 96 vs. Central Michigan, 11-17-13

**Scored 90 points or more in four straight games:** 4 - 96 vs. Wagner, 11-10-13; 103 vs. Georgia Southern, 11-13-13; 96 vs. Central Michigan, 11-17-13, 116 vs. Lipscomb 11-12-13

**Scored 80 points or more in a game:** 101 vs. Sacramento State, 11-10-17

**Scored 50 points or more in the first half:** 56 vs. Sac. State, 11-10-17

**Scored 50 points or more in the second half:** 50 vs. Florida, 3-4-16

**Scored 60 points or more in first half:** 60 vs. Grambling, 12-29-13

**Scored 60 points or more in second half:** 60 vs. Ole Miss, 2-13-14

**Lost a game by 20 or more points:** -30 (93-63) vs. South Carolina, 3-5-16

**Lost a game by 30 or more points:** -30 (93-63) vs. South Carolina, 3-5-16

**Lost a game by 40 or more points:** -44 (39-83) vs. Tennessee, 1-27-2001

**Lost an SEC game by 40 or more pts:** -44 (39-83) vs. Tennessee, 1-27-01

**Lost a game by 50 or more points:** -72 (38-110) vs. Tennessee, 1-21-01

**Lost a game by 60 or more points:** -72 (38-110) vs. Tennessee, 1-21-01

**Lost a game by 70 or more points:** -72 (38-110) vs. Tennessee, 1-21-01

**Allowed 100 points:** 130 by Baylor, 12-6-13

**Allowed 90 or more points:** 95 by South Carolina, 2-26-17

**Scored fewer than 50 points:** 48 vs. Louisville, 12-2-12

**Scored fewer than 40 points:** 36 vs. LSU, 12-18-2005

**Scored fewer than 25 points in a half:** 23 (1st) vs. S. Carolina, 2-2-17

**Scored fewer than 20 points in a half:** 17 (1st) at Arizona State, 11-15-15

**Held opponent to 50 points or fewer:** 34 vs. Gardner-Webb, 11-12-17

**Held opponent to 40 points or fewer:** 34 vs. Gardner-Webb, 11-12-17

**Held opponent to 30 points or fewer:** 24 by Jackson St., 11-29-15

**Held opponent to 20 pts or fewer in the 1st half:** 16 vs. Gardner-Webb, 11-12-17

**Held opponent to 20 pts or fewer in the 2nd half:** 18 vs. Gardner-Webb, 11-12-17

**Held SEC opp. to 20 pts or fewer in the 1st half:** 20 at Arkansas, 2-16-17

**Held an opponent to 10 points or fewer in the first half:** \*9 by Charleston Southern, 12-10-04

**Held an opponent to 10 points or fewer in the second half:** \*7 by Jackson St., 11-29-15

**Won a game after trailing at the half:** vs. Belmont, 3-37-16 (36-35)

**Won a game after trailing 10+ at the half:** at Arizona St., 11-15-15 (29-17)

**Won an SEC game after trailing at the half:** vs. Miss. ST., 2-23-17, (31-30)

**Won after trailing at the half at home:** vs. Miss. State, 2-23-16 (31-30)



## WHEN WAS THE LAST TIME ...

**Won a game after trailing at the half on the road:** at NKU, 12-2-15 (41-37)  
**Scored 100 or more points and lost:** n/a  
**Scored 80 points or more and lost:** at S. Carolina, 2-26-175 (95-87)  
**Scored 50 points or fewer and won:** 48 vs. Louisville, 12-2-12  
**Game decided by one point:** vs. Tennessee, 1-25-16 (W, 64-63)  
**Game decided by two points:** vs. Mizzou, 1-5-17 (W, 64-62)  
**Game decided by three points:** vs. Belmont, 3-17-17 (73-70)  
**Shot 50 percent or better vs. non-conference opponent:** 50.0% (35-of-70) vs. Sacramento State, 11-10-17  
**Shot 50% or better vs. SEC opponent:** 58.6% (34-58) vs. Ole Miss, 1-26-17  
**Shot 50 percent or better in consecutive games:** two - NKU (55.2%) 12-2-15; Louisville (51.8%) 12-10-15  
**Shot 55 percent or better:** 58.6% (34-58) vs. Ole Miss, 1-26-17  
**Shot 60 percent or better:** 60.7 vs. Arkansas, 2-18-07  
**Shot 70 percent or higher in a half:** 72.2 (2nd half) vs. Liberty, 3-20-10  
**Shot 60 percent or higher from 3:** 61.1 vs. Colorado, 11-22-15  
**Shot 30 percent or lower:** 30.0 vs. Duke, 12-29-16 (18-of-60)  
**Shot 20 percent or lower:** 20.0 vs. Georgia, (12-of-60), 3-02-07  
**Shot 15% or lower in a half:** 13.6 (1st half) vs. USC (3-of-22), 3-2-08  
**Held an opponent to lower than 30 percent:** 28.6% (16-of-56) by Montana, 11-16-17  
**Held an opponent to lower than 20 percent:** 15.6% (7-of-45) by Jackson State, 11-29-15  
**Held an opponent to lower than 15 percent in a half:** 4.2% (2nd half) vs. Jackson State, 11-29-15  
**Opponent shot 50 percent or better:** 57.1% by S. Carolina (32-of-56), 3-4-17  
**Opponent shot 60 percent or better:** 61.8% by S. Carolina (34-of-55), 2-26-17  
**Opponent shot 50 percent or better in consecutive games:** Two straight - Florida, 58.0% (29-of-50), 1-31-16; South Carolina, 52.0% (26-of-50), 2-4-16  
**Did not hit a 3-pointer:** vs. Middle Tenn., 12-9-16 (0-of-9)  
**Held opponent without a 3-pointer:** Texas A&M (0-3), 2-28-16  
**Held consecutive opponents without a 3-pointer:** Delaware State, 11-10-12 (0-of-0) and Baylor, 11-13-12 (0-3)  
**Opponent hit 10 or more 3-pointers:** 11 by Mizzou, 1-5-17  
**Hit 10 or more 3-pointers:** 12 vs. New Hampshire, 11-17-16  
**Hit 11 or more 3-pointers:** 12 vs. New Hampshire, 11-17-16  
**Hit 12 or more 3-pointers:** 12 vs. New Hampshire, 11-17-16  
**Hit 13 or more 3-pointers:** \*14 vs. Mississippi State, 1-8-12 (14-of-30)  
**Pulled down 60 or more rebounds:** \*67 vs. Morehead State, 11-18-15  
**Pulled down 65 or more rebounds:** \*67 vs. Morehead State, 11-18-15  
**Had 20 or more Reb. than Opp:** 25 vs. GWU., 11-12-17 (53-28)  
**Had 30 or more assists in a game:** 32 vs. Morehead St., 11-18-15  
**Had 20 or more assists in a game:** 23 vs. Ole Miss, 1-26-17  
**Had 20 or more assists in three straight games:** 4 - 32 vs. Morehead St., 11-18-15; 24 vs. Colorado 11-22-15; 26 vs. Eastern Michigan 11-25-15; 22 vs. Jackson State 11-29-15  
**Had 20 or more assists in four straight games:** 32 vs. Morehead St., 11-18-15; 24 vs. Colorado 11-22-15; 26 vs. Eastern Michigan 11-25-15; 22 vs. Jackson State 11-29-15  
**Had 20 or more assists in five straight games:** 26 vs. Louisville (2/23/82); 25 vs. Alabama (2/26/82); 29 vs. LSU (2/27/82), 27 vs. Tennessee (2/28/82) and 24 vs. Illinois (3/14/82)  
**Had 19 or more blocks in a game:** \*19 vs. North Carolina A&T, 12-6-05  
**Had 10 or more blocks in a game:** 12 vs. Wright State, 3-22-14  
**Opponent had 10 or more blocks in a game:** 10 vs. Ohio State, 3-19-17  
**Had 10 or more steals in a game:** 11 vs. Vanderbilt, 2-5-17  
**Had 20 or more steals in a game:** 24 vs. Georgia Southern, 11-13-13  
**Had 25 or more steals in a game:** \*28 vs. West Virginia, 12-12-93  
**Opponent had 10 or more steals in a game:** 10 by Alabama, 1-12-17  
**Forced 30 or more turnovers in a game:** 37 vs. Jackson State, 11-29-15  
**Forced 30 or more turnovers in an SEC game:** 31 vs. Tennessee, 3-3-13  
**Forced 40 or more turnovers in a game:** \*49 vs. ARK-Pine Bluff, 12-11-11  
**Committed 30 or more turnovers in a game:** 30 at Florida, 1-31-16  
**Committed 30 or more turnovers and won:** 34 vs. Green Bay, 3-19-12  
**Committed five turnovers or fewer:** 5 vs. New Hampshire, 11-17-16  
**Committed 10 turnovers or fewer in a non-con game:** 7 vs. Gardner-Webb, 11-12-17  
**Committed 10 turnovers or fewer in an SEC game:** 10 vs. S. Carolina, 3-4-17  
**Committed more turnovers than the opponent:** at Montana (11-10), 11-16-17  
**Opponent committed fewer than 10 turnovers:** 6 by Ohio St., 3-19-17  
**Attempted 40 FT:** 42 vs. Tennessee St., 3-20-15  
**Attempted fewer than five FT:** 4 vs. South Carolina, 1-13-11  
**Made 30 FT:** 31 vs. Tennessee St., 3-20-15  
**Made 40 FT:** 49\* vs. Baylor, 12-6-13  
**Hit 100 percent from the free-throw line (min. 10 made):** \*12-of-12 vs. Missouri, 1-13-13  
**Won an overtime game:** vs. Miss. State, 2-23-17, (78-75) (H) 1OT  
**Lost an overtime game:** vs. Arizona State, 12-11-16 (73-71) (A) 1OT  
**Played a double-overtime game:** vs. Miss. State, 2-12-15 (92-90) (H)  
**Played a triple-overtime game:** vs. Baylor, 12-6-13 (133-130) (N) 4OT  
**Played a quadruple-overtime game:** vs. Baylor, 12-6-13 (133-130) (N) 4OT  
**Started three freshmen in a game:** (Evans, Conwright, Drake) vs. UTC, 12-11-10  
**Started four freshmen in a game:** (Mendeng, Helm, Hawthorne, Stoglin) vs. Tennessee, 1-27-2001  
**Defeated a Top-5 opponent:** 2-23-17 - #22/rv UK 78 - #3/2 vs. Miss. State 75 (OT) (H)  
**Defeated a Top-10 opponent:** 2-23-17 - #22/rv UK 78 - #3/2 vs. Miss. State 75 (OT) (H)  
**Defeated a Top-25 opponent:** 2-23-17 - #22/rv UK 78 - #3/2 vs. Miss. State 75 (OT) (H)  
**Defeated a Top-25 non-conference opponent at home:** 12-1-16 - #17 UK 82 - #12 Oklahoma 68 (H)  
**Defeated a Top-25 non-conference opponent on the road:** 11-15-15 - #17/18 UK 68 - #15/15 Arizona State 64 (A)  
**Defeated a Top-25 opponent at a neutral site:** 3-4-16 #13/13 UK 92 - #25/24 Florida 69 (N) - SEC Tournament Quarterfinals  
**Defeated a Top-10 SEC opponent at home:** 2-23-17 - #22/rv UK 78 - #3/2 vs. Miss. State 75 (OT) (H)  
**Defeated a Top-25 SEC opponent at home:** 2-23-17 - #22/rv UK 78 - #3/2 vs. Miss. State 75 (OT) (H)  
**Defeated a Top-25 opponent on the road:** 2-18-16 - #16/16 UK 83 - #14/14 Mississippi State 60 (A)  
**Defeated a Top-25 SEC opponent on the road:** 2-18-16 - #16/16 UK 83 - #14/14 Mississippi State 60 (A)  
**Defeated a Top-10 opponent on the road:** 12-7-14 - UK 77 - #7/7 Louisville 68 (A)  
**Defeated a Top-10 SEC opponent on the road:** 2-16-14 - UK 75 - #8/8 Tennessee 71 (A)  
**Was defeated by an unranked opp. (while ranked) at home:** vs. Texas A&M (77-68), 1-8-17 (#24/rv)  
**Was defeated by an unranked opp. (while ranked) on the road:** at Missouri (73-67), 1-30-17 (#25/nr)  
**Was defeated by an unranked opp. (while ranked) at a neutral site:** vs. Illinois (77-71), 11-27-14 (#9/10)  
*\* Denotes a school record*

# Head Coach Matthew Mitchell

UK's All-Time Winningest Coach

11th Season at Kentucky



- Became UK's all-time winningest coach on March 3, 2013 with 139 wins in just six seasons.
- Has 102 career SEC wins, which ranks 10th most in league history
- Two-time AP SEC Coach of the Year (2010 & 2012).
- Led UK to postseason event every season. (2 WNIT, 8 NCAA)
- School-record eight consecutive NCAA Tournament appearances.
- Three NCAA Elite Eight finishes. (2010, 2012 and 2013)
- Five Sweet 16 appearances. (2010, 2012, 2013, 2014, 2016)
- Led UK to its first SEC Regular Season Championship in 30 years during the 2011-12 season.
- Nine top-four finishes in the SEC in his 10 seasons.
- Four SEC Tournament title game appearances in the last six years. (2010, 2011, 2013, 2014)
- 132 consecutive appearances in the AP Top 25 poll from 2009-10 to 2016-17 (eighth longest streak in poll history.)
- School-record eight straight 20-win seasons.
- Compiled an impressive 148-29 (.836) mark at home (includes Rupp Arena), including a 128-15 (.895) over the last eight seasons.
- Led UK to a school-record 30 wins in 2012-13.
- Led UK to a school-record 13 SEC wins in 2011-12 and 2012-13.
- Sixteen NCAA Tournament wins.
- Forty-seven wins over ranked opponents, including 16 over top 10.
- Seven top-20 recruiting classes, including the nation's fifth-ranked class in 2009-10 and 2012-13 and 16th-ranked class in 2016-17.
- Has coached 18 All-Conference Performers, including two who were named SEC Player of the Year in Victoria Dunlap (twice) and A'dia Mathies (twice), two who were SEC Freshman of the Year winners in A'dia Mathies and Bria Goss, and two SEC (Co) 6th Women of the Year winners in Keyla Snowden and Jennifer O'Neill (2014 and 2015).

- A UK player won the AP SEC Player of the Year 4 straight years, the 1st SEC school to accomplish that feat.
- Under his leadership, 34 different players have been named to the SEC Academic Honor Roll, seven have been All-SEC Freshmen honorees, three were named All-Americans, including just the second State Farm/WBCA All-American in school history in Victoria Dunlap and one player (Chelsea Chowning) was named an Academic All-American, the first in school history.

- Five WNBA draft picks, including three in the first round - Dunlap was UK's first WNBA first round draft pick when she was chosen as the 11th overall pick in the 2011 WNBA Draft and A'dia Mathies was selected 10th overall by the Los Angeles Sparks in the 2013 draft. Last year, Evelyn Akhator became UK's highest ever pick when she went third overall to the Dallas Wings before Makayla Epps went 33rd overall to Chicago.

#### DIY YOU KNOW?

- Coach Mitchell and his three brothers (David, Mark, Stephen) are all Eagle Scouts.
- Named an honorary Rotarian in the Lexington chapter in 2011.
- Has three daughters, Lacy Lea Arant, Saylor Rose and Presley Blue ... Lacy is a 2012 graduate of Mississippi State ... Daughter, Saylor Rose, is named after former Wildcat, Victoria Essence Rose Dunlap.
- Became a grandfather in October 2017 as Lacy and her husband Stephen had their first son.
- Used to be the lead singer of a band called "Coach Mitchell and the B Team" and is now the lead singer of "Matthew Mitchell and the Go Big Blue Band" which played prior to the football team's season opener at The New CWS.
- Gave \$100,000 of his new seven-year contract (May, 2012) back to the University of Kentucky for academic purposes.
- In 2014, pledged \$1 million over the next 10 years to UK Athletics through the Mitchell Family Foundation.
- In 2016, Matthew and Jenna were presented the Community Service Award by the Urban League of Lexington.

Year	School	Pos.	Record	SEC	Postseason
17-18	Kentucky	Head Coach	3-0	0-0	n/a
16-17	Kentucky	Head Coach	22-11	11-5	NCAA Second Round/SEC Semifinals
15-16	Kentucky	Head Coach	25-8	10-6	NCAA Sweet 16/SEC Semifinals
14-15	Kentucky	Head Coach	24-10	10-6	NCAA Second Round/SEC Semifinals
13-14	Kentucky	Head Coach	26-9	10-6	NCAA Sweet 16/SEC Tournament Finals
12-13	Kentucky	Head Coach	30-6	13-3	NCAA Elite Eight/SEC Tournament Finals
11-12	Kentucky	Head Coach	28-7	13-3	NCAA Elite Eight/SEC Regular Season Champions
10-11	Kentucky	Head Coach	25-9	11-5	NCAA Second Round/SEC Tournament Finals
09-10	Kentucky	Head Coach	28-8	11-5	NCAA Elite Eight/SEC Tournament Finals
08-09	Kentucky	Head Coach	16-16	5-9	WNIT Second Round
07-08	Kentucky	Head Coach	17-16	8-6	WNIT Quarterfinals/SEC Tournament Semifinals
06-07	Morehead St.	Head Coach	14-16		Third-place OVC finish
05-06	Morehead St.	Head Coach	16-13		OVC Tournament Semifinals
04-05	Kentucky	Asst. Coach	18-16		WNIT final four
03-04	Kentucky	Asst. Coach	11-17		-
02-03	Florida	Asst. Coach	9-19		-
01-02	Florida	Asst. Coach	18-11		NCAA Tournament
2000-01	Florida	Asst. Coach	24-6		NCAA Tournament
1999-00	Tennessee	Grad. Asst.	33-4		NCAA Runner-up

## MITCHELL VS. OPPONENTS

	UK	Overall
Alabama	11-2	11-2
Alabama A&M	2-0	2-0
Albany	1-0	1-0
Alcorn State	1-0	1-0
Appalachian State	1-0	1-0
Arizona State	1-1	1-1
Arkansas	11-1	11-1
Arkansas Pine-Bluff	2-0	2-0
Auburn	11-3	11-3
Austin Peay	-	4-1
Baylor	2-2	2-2
Belmont	2-0	2-0
Binghamton	-	1-0
Bradley	1-0	1-0
Boston	1-0	1-0
Butler	1-0	1-0
Centenary	-	1-0
Central Michigan	2-0	2-0
Chattanooga	1-0	1-0
Cincinnati	2-0	2-0
College of Charleston	-	1-0
Colorado	1-1	1-1
Connecticut	0-2	0-2
Dayton	1-1	1-1
Delaware	1-0	1-0
Delaware State	1-0	1-0
DePaul	2-0	2-0
Duke	2-4	2-4
East Tennessee State	1-1	1-1
Eastern Illinois	-	3-1
Eastern Kentucky	-	3-1
Eastern Michigan	1-0	1-1
Evansville	-	0-1
Florida	11-4	11-5
Florida Atlantic	1-0	1-0
Florida A&M	1-0	1-0
Furman	1-0	1-0
Gardner-Webb	1-0	1-0
Georgia	9-7	9-7
Georgia Southern	1-0	1-0
George Washington	1-1	1-1
Gonzaga	1-0	1-1
Grambling State	1-0	2-0
Green Bay	1-0	1-0
Hampton	1-0	1-0
High Point	1-0	1-0
Illinois	0-1	0-1
IUPUI	1-0	1-1
Jackson State	1-0	1-0
Jacksonville State	1-0	4-1
James Madison	1-0	1-0
Kentucky Christian	-	1-0
Liberty	1-0	1-0
Lipscomb	2-0	2-0
Long Island	1-0	1-0
LSU	8-8	8-8
Louisville	6-4	6-4
Marist	2-0	2-0
Marshall	-	0-2
Marquette	0-1	0-1
McNeese State	2-0	2-0
Miami (Fla.)	1-0	1-0
Miami Ohio	4-0	4-0
Michigan	0-2	0-2
Michigan State	1-0	1-0
Middle Tennessee	6-2	6-2
Minnesota	0-1	0-1
Mississippi State	12-1	12-2
Mississippi Valley State	2-0	2-0
Missouri	5-1	5-1
Montana	1-0	1-0
Morehead State	7-0	7-0
Murray State	1-0	2-3
Navy	1-0	1-0
Nebraska	1-0	1-0
Nebraska Omaha	1-0	1-0
New Hampshire	1-0	1-0
Northeastern	1-0	1-0
Northern Kentucky	2-0	2-0
North Carolina	0-1	0-1
North Carolina A&T	1-0	1-0
Notre Dame	1-1	1-1
Ohio State	0-1	0-1
Oklahoma	3-1	3-1
Ole Miss	8-3	8-3
Old Dominion	0-1	0-1
Pepperdine	1-0	1-0
Pikeville College	-	1-0
Radford	1-0	1-0
Rice	1-0	1-0
Sacramento State	1-0	1-0
Samford	2-0	3-3
Sam Houston State	1-0	1-0
South Alabama	1-0	1-0
South Carolina	10-13	10-13
South Carolina-Upstate	2-0	2-0
South Florida	1-0	1-0
Southeast Missouri	-	1-3
Southern Miss	2-0	2-0
Syracuse	1-0	1-0
Tennessee	5-13	5-13
Tennessee-Chattanooga	2-0	2-0
Tennessee-Martin	2-0	5-2
Tennessee State	3-0	3-0
Tennessee Tech	1-0	2-4
Texas	0-1	0-1
Texas A&M	4-3	4-3
UC Santa Barbara	3-0	3-0
UNC Asheville	1-0	1-0
Vanderbilt	12-4	12-4
Virginia Tech	-	0-1
Wagner	1-0	1-0
Washington	0-1	0-1
Washington State	1-0	1-0
Western Kentucky	0-2	0-3
William & Mary	1-0	1-0
Wisconsin	0-1	0-1
Wright State	1-0	1-0
Wofford	1-0	1-0
Xavier	0-2	0-3
Yale	1-0	1-0
<b>Total</b>	<b>244-100</b>	<b>274-129</b>

## MISCELLANEOUS STATS

### LEADING SCORER

Taylor Murray	2
Alyssa Rice	1

### LEADING REBOUNDER

Dorie Harrison	1
Maci Morris	1
Taylor Murray	1

### LEADER IN ASSISTS

Dorie Harrison	1
Maci Morris	1
Taylor Murray	2
Kameron Roach	1
Jaida Roper	2

### CHARGES DRAWN

Kentucky	4
Tatyana Wyatt	1
Alyssa Rice	1
Jaida Roper	1
Jessica Hardin	1
Opponents	1

### 10-SEC. BACKCOURT VIOLATION FORCED

Kentucky	1
Opponent	0

### 5-SEC. OUT-OF-BOUNDS CALLS FORCED

Kentucky	1
Opponent	0

### SHOT CLOCK VIOLATIONS FORCED

Kentucky	0
Opponent	1

### 20-POINT SCORING GAMES

Taylor Murray	1
---------------	---

### 30-POINT SCORING GAMES

TBD	
-----	--

### 40-POINT SCORING GAMES

TBD	
-----	--

### DOUBLE-FIGURE SCORING GAMES

Taylor Murray	2
Maci Morris	3
Makenzie Cann	2
Tatyana Wyatt	1
Dorie Harrison	1
Alyssa Rice	1
Jaida Roper	2

### DOUBLE-FIGURE REBOUND GAMES

Maci Morris	1
Taylor Murray	1

### 20-PLUS REBOUNDING GAMES

TBD	
-----	--

### SEASON DOUBLE-DOUBLES

Maci Morris	1
Taylor Murray	1

### TECHNICAL FOULS

Kentucky	0
Opponent	0

### UK'S FIRST SUBSTITUTION

Jaida Roper	3
-------------	---

### FIRST TO SCORE

Makenzie Cann	1
Alyssa Rice	2

### JUMP BALLS CONTROLLED

Kentucky	0
Opponent	2

### RUNS OF 10 OR BETTER

Kentucky	3
Opponent	1

### LARGEST HALFTIME LEAD

vs. Gardner-Webb	19
------------------	----

### LARGEST HALFTIME LEAD (SEC)

TBD	
-----	--

### LARGEST HALFTIME DEFICIT

TBD	
-----	--

### LARGEST HALFTIME DEFICIT (SEC)

TBD	
-----	--

### LARGEST UK LEAD

vs. Gardner-Webb	38
------------------	----

### LARGEST UK WIN

vs. Gardner-Webb	38
------------------	----

### LARGEST UK WIN (SEC)

TBD	
-----	--

### LARGEST UK DEFICIT

vs. Gardner-Webb	4
------------------	---

### LARGEST UK DEFICIT (SEC)

TBD	
-----	--

### LARGEST UK LOSS

TBD	
-----	--

### LARGEST UK LOSS (SEC)

TBD	
-----	--

### MOST CONSECUTIVE POINTS

vs. Gardner-Webb	19
------------------	----

### MOST CONSECUTIVE POINTS (SEC)

TBD	
-----	--

### MOST CONSECUTIVE OPP. POINTS

at Montana	11
------------	----

### MOST CONSECUTIVE OPP. PTS (SEC)

TBD	
-----	--

### LARGEST LEAD IN 1ST HALF

vs. Gardner-Webb	19
------------------	----

### LARGEST DEFICIT IN 1ST HALF

vs. Gardner-Webb	4
------------------	---

### LARGEST LEAD IN 2ND HALF

vs. Gardner-Webb	38
------------------	----

### LARGEST DEFICIT IN 2ND HALF

TBD	
-----	--

### LARGEST LEAD IN LOSS

TBD	
-----	--

### SPECIALTY STATS

PP - Points in the paint; POT - Points off turnovers; 2nd - Second-chance points; FB - Fast break points; BP - Bench points

Opponent	KENTUCKY/OPPONENT				
	PP	POT	2nd	FB	BP
vs. Sacramento State	48/40	18/9	17/7	0/0	36/11
vs. Gardner-Webb	42/8	17/6	15/2	8/0	28/0
at Montana	26/20	18/10	9/12	6/0	14/22
Total	116/68	53/25	41/21	12/0	78/33

### CLUTCH FREE THROWS - INDIVIDUAL/SEASON TOTALS

(final three minutes of regulation and overtime in a six-point game)

Player	FT-FTA	Pct.
TOTAL	0-0	

### LARGEST 1ST HALF DEFICIT IN WIN

vs. Gardner-Webb	4
------------------	---

### LARGEST 2ND HALF DEFICIT IN WIN

TBD	
-----	--

### LARGEST 1ST HALF DEFICIT IN SEC WIN

TBD	
-----	--

### LARGEST 2ND HALF DEFICIT IN SEC WIN

TBD	
-----	--

### LONGEST WINNING STREAK

Nov. 10-Pres.	3
---------------	---

### LONGEST SEC WINNING STREAK

TBD	
-----	--

### LONGEST LOSING STREAK

TBD	
-----	--

### LARGEST MEMORIAL COL. CROWD

vs. Sacramento State	4,313
----------------------	-------

### LARGEST HOME CROWD

vs. Sacramento State	4,313
----------------------	-------

### LARGEST ROAD CROWD

at Montana	2,808
------------	-------

### LARGEST NEUTRAL CROWD

TBD	
-----	--



# KENTUCKY WBB 2017-18 PLAYER BIOS

0

LaShae HalseL • 6-0 • FORWARD • JUNIOR

BOWLING GREEN, KY. (WARREN CENTRAL HS)



## 2017-18 (Junior)

- Recorded her first career assist vs. Gardner-Webb on Nov. 12.
- Saw three minutes of action in the season opener vs. Sacramento State, grabbing one defensive board.
- Physical post/wing that has worked hard to improve her game since walking on to the program in the fall of 2016.
- Saw action in seven games last season, recording four rebounds and one block in 12 minutes.

## 2017-18 Season Highs

POINTS:	-
FGM:	-
FGA:	-
FTM:	-
FTA:	-
3FGM:	-
3FGA:	-
O-REBOUNDS:	-
D-REBOUNDS:	1 vs. Sacramento St., 11/10/17
TOTAL REBOUNDS:	1 vs. Sacramento St., 11/10/17
ASSISTS:	1 vs. Gardner-Webb, 11/12/17
BLOCKS:	-
STEALS:	-
MINUTES:	3 vs. Sacramento St., 11/10/17

## Career Highs

POINTS:	-
FGM:	-
FGA:	2 vs. Radford, 12/18/16
FTM:	-
FTA:	-
3FGM:	-
3FGA:	-
O-REBOUNDS:	2 vs. Radford, 12/18/16
D-REBOUNDS:	1, 3x, last vs. Sacramento St., 11/10/17
TOTAL REBOUNDS:	3 vs. Radford, 12/18/16
ASSISTS:	1 vs. Gardner-Webb, 11/12/17
BLOCKS:	1 vs. Radford, 12/18/16
STEALS:	-
MINUTES:	3, twice, last vs. Sacramento St., 11/10/17

## HalseL's 2017-18 Game-by-Game Statistics

Opponent	Min	FG-A	3PT-A	FT-A	O-D-T	PF	A	TO	BS	ST	PTS
vs. Sacramento St.	3	0-0	0-0	0-0	0-1-1	0	0	0	0	0	0
vs. Gardner-Webb	2	0-0	0-0	0-0	0-0-0	0	1	0	0	0	0
at Montana					DNP - Coach's Decision						
at Washington St.											
vs. Morehead St.											
vs. Marshall											
at Baylor											
vs. Tennessee Tech											
vs. Evansville											
at FGCU											
at Miami (Fla.)											
vs. Louisville											
vs. California											
at Middle Tennessee											
vs. Tennessee											
at TAMU											
vs. Georgia											
at Florida											
at Vanderbilt											
vs. South Carolina											
vs. Alabama											
at Arkansas											
vs. Auburn											
vs. LSU											
at Missouri											
at Mississippi St.											
vs. Arkansas											
at South Carolina											
at Ole Miss											
vs. Mississippi St.											

\* Started game

## Extras

	17-18	Career
Scored 10+ Points	-	-
Scored 15+ Points	-	-
Scored 20+ Points	-	-
Made 3+ 3FG	-	-
Double-figure Rebounds	-	-
Double-doubles	-	-
3+ Assists	-	-
2+ Steals	-	-
Led UK in Scoring	-	-
Led UK in Rebounds	-	-
Led UK in Assists	-	-
Led UK in Steals	-	-
Led UK in Blocks	-	-

## LaShae HalseL's Career Stats

Year	GP-GS	MIN	FG-FGA	PCT	3FG-FGA	PCT	FT-FTA	PCT	OFF-DEF	TOT-AVG	PF-FO	A	TO	BLK	ST	PTS-AVG
2016-17	7-0	12-1.7	0-3	.000	0-0	.000	0-0	.000	2-2	4-0.6	1-0	0	0	1	0	0-0.0
2017-18	2-0	5-2.5	0-0	.000	0-0	.000	0-0	.000	0-1	1-0.5	0-0	1	0	0	0	0-0.0
TOTAL	9-0	17-1.9	0-3	.000	0-0	.000	0-0	.000	2-3	5-0.6	1-0	1	0	1	0	0-0.0

# KENTUCKY WBB 2017-18 PLAYER BIOS

2

PAIGE POFFENBERGER • 5-8 • GUARD • SOPHOMORE

MORGANTOWN, W.VA. (MORGANTOWN HS)



### 2017-18 (Sophomore)

- Sat out Kentucky's first two games due to concussion protocol.
- Played four minutes against Montana, adding one assist.
- Joined the team as a walk-on in the fall of 2016, and was given more and more playing time due to her strong effort and hustle on the defensive end.
- Hard-nosed player who prides herself in her defensive intensity.
- Played in 21 games during her freshman campaign, averaging 5.9 minutes per game.
- Scored 19 total points on the season with 15 rebounds and six steals.

### 2017-18 Season Highs

POINTS:	-
FGM:	-
FGA:	2 at Montana, 11/16/17
FTM:	-
FTA:	-
3FGM:	-
3FGA:	1 at Montana, 11/16/17
O-REBOUNDS:	-
D-REBOUNDS:	-
TOTAL REBOUNDS:	-
ASSISTS:	1 at Montana, 11/16/17
BLOCKS:	-
STEALS:	-
MINUTES:	4 at Montana, 11/16/17

### Career Highs

POINTS:	5 vs. TAMU, 01/08/17
FGM:	2 vs. TAMU, 01/08/17
FGA:	5 vs. New Hampshire, 11/17/16
FTM:	2 vs. Florida, 02/19/17
FTA:	2, twice, last vs. Florida, 02/19/17
3FGM:	1, twice, last vs. TAMU, 01/08/17
3FGA:	2 vs. Missouri, 01/05/17
O-REBOUNDS:	1, twice, last vs. New Hampshire, 11/17/16
D-REBOUNDS:	4 at Alabama, 01/12/17
TOTAL REBOUNDS:	4 at Alabama, 01/12/17
ASSISTS:	1, twice, last at Montana, 11/16/17
BLOCKS:	-
STEALS:	3 vs. Vanderbilt, 02/05/17
MINUTES:	18 vs. Ole Miss, 01/26/17

### Poffenberger's 2017-18 Game-by-Game Statistics

Opponent	Min	FG-A	3PT-A	FT-A	O-D-T	PF	A	TO	BS	ST	PTS
vs. Sacramento St.					DNP - Concussion						
vs. Gardner-Webb					DNP - Concussion						
at Montana	4	0-2	0-1	0-0	0-0-0	1	1	0	0	0	0
at Washington St.											
vs. Morehead St.											
vs. Marshall											
at Baylor											
vs. Tennessee Tech											
vs. Evansville											
at FGCU											
at Miami (Fla.)											
vs. Louisville											
vs. California											
at Middle Tennessee											
vs. Tennessee											
at TAMU											
vs Georgia											
at Florida											
at Vanderbilt											
vs. South Carolina											
vs. Alabama											
at Arkansas											
vs. Auburn											
vs. LSU											
at Missouri											
at Mississippi St.											
vs. Arkansas											
at South Carolina											
at Ole Miss											
vs. Mississippi St.											

\* Started game

### Extras

	17-18	Career
Scored 10+ Points	-	-
Scored 15+ Points	-	-
Scored 20+ Points	-	-
Made 3+ 3FG	-	-
Double-figure Rebounds	-	-
Double-doubles	-	-
3+ Assists	-	-
2+ Steals	-	1
Led UK in Scoring	-	-
Led UK in Rebounds	-	-
Led UK in Assists	-	-
Led UK in Steals	-	-
Led UK in Blocks	-	-

### Paige Poffenberger's Career Stats

Year	GP-GS	MIN	FG-FGA	PCT	3FG-FGA	PCT	FT-FTA	PCT	OFF-DEF	TOT-AVG	PF-FO	A	TO	BLK	ST	PTS-AVG
2016-17	21-0	123-5.9	7-19	.368	2-6	.333	3-4	.750	2-13	15-0.7	11-0	1	9	0	6	19-0.9
2017-18	1-0	4-4.0	0-2	.000	0-1	.000	0-0	.000	0-0	0-0.0	1-0	1	0	0	0	0-0.0
TOTAL	22-0	127-5.8	7-21	.333	2-7	.286	3-4	.750	2-13	15-0.7	12-0	2	9	0	6	19-0.9

# KENTUCKY WBB 2017-18 PLAYER BIOS

3

KeKe McKinney • 6-1 • FORWARD • FRESHMAN

KNOXVILLE, TENN. (FULTON HS)



## 2017-18 (Freshman)

- Had a balanced effort vs. Gardner-Webb on Nov. 12, adding seven points and seven boards in 18 minutes of action.
- Led the Wildcats with five offensive boards vs. GWU.
- Played 12 minutes in her Kentucky debut, adding three points, two rebounds and two steals.
- A four-star prospect by ESPN.com, which tabbed her the 88th overall player in the 2017 class, including the 17th best wing
- An impressive wing that led Fulton High School to a state tournament berth and 27 wins her senior season, averaging a double-double with over 16 points and 11 rebounds per game.
- All-around athlete that can play multiple positions and really defend the post or the perimeter.

## 2017-18 Season Highs

POINTS:	7 vs. Gardner-Webb, 11/12/17
FGM:	3 vs. Gardner-Webb, 11/12/17
FGA:	9 vs. Gardner-Webb, 11/12/17
FTM:	1 vs. Sacramento St., 11/10/17
FTA:	2 vs. Sacramento St., 11/10/17
3FGM:	1 vs. Gardner-Webb, 11/12/17
3FGA:	3, twice, last vs. Gardner-Webb, 11/12/17
O-REBOUNDS:	5 vs. Gardner-Webb, 11/12/17
D-REBOUNDS:	2, twice, last at Montana, 11/16/17
TOTAL REBOUNDS:	7 vs. Gardner-Webb, 11/12/17
ASSISTS:	1 at Montana, 11/16/17
BLOCKS:	-
STEALS:	2 vs. Sacramento St., 11/10/17
MINUTES:	18 vs. Gardner-Webb, 11/12/17

## Career Highs

POINTS:	7 vs. Gardner-Webb, 11/12/17
FGM:	3 vs. Gardner-Webb, 11/12/17
FGA:	9 vs. Gardner-Webb, 11/12/17
FTM:	1 vs. Sacramento St., 11/10/17
FTA:	2 vs. Sacramento St., 11/10/17
3FGM:	1 vs. Gardner-Webb, 11/12/17
3FGA:	3, twice, last vs. Gardner-Webb, 11/12/17
O-REBOUNDS:	5 vs. Gardner-Webb, 11/12/17
D-REBOUNDS:	2, twice, last at Montana, 11/16/17
TOTAL REBOUNDS:	7 vs. Gardner-Webb, 11/12/17
ASSISTS:	1 at Montana, 11/16/17
BLOCKS:	-
STEALS:	2 vs. Sacramento St., 11/10/17
MINUTES:	18 vs. Gardner-Webb, 11/12/17

## McKinney's 2017-18 Game-by-Game Statistics

Opponent	Min	FG-A	3PT-A	FT-A	O-D-T	PF	A	TO	BS	ST	PTS
vs. Sacramento St.	12	1-5	0-3	1-2	1-1-2	1	0	1	0	2	3
vs. Gardner-Webb	18	3-9	1-3	0-0	5-2-7	1	0	1	0	0	7
at Montana	15	0-2	0-1	0-0	0-2-2	4	1	0	0	1	0
at Washington St.											
vs. Morehead St.											
vs. Marshall											
at Baylor											
vs. Tennessee Tech											
vs. Evansville											
at FGCU											
at Miami (Fla.)											
vs. Louisville											
vs. California											
at Middle Tennessee											
vs. Tennessee											
at TAMU											
vs Georgia											
at Florida											
at Vanderbilt											
vs. South Carolina											
vs. Alabama											
at Arkansas											
vs. Auburn											
vs. LSU											
at Missouri											
at Mississippi St.											
vs. Arkansas											
at South Carolina											
at Ole Miss											
vs. Mississippi St.											

\* Started game

## Extras

	17-18	Career
Scored 10+ Points	-	-
Scored 15+ Points	-	-
Scored 20+ Points	-	-
Made 3+ 3FG	-	-
Double-figure Rebounds	-	-
Double-doubles	-	-
3+ Assists	-	-
2+ Steals	1	1
Led UK in Scoring	-	-
Led UK in Rebounds	-	-
Led UK in Assists	-	-
Led UK in Steals	1	1
Led UK in Blocks	-	-

## KeKe McKinney's Career Stats

Year	GP-GS	MIN	FG-FGA	PCT	3FG-FGA	PCT	FT-FTA	PCT	OFF-DEF	TOT-AVG	PF-FO	A	TO	BLK	ST	PTS-AVG
2017-18	3-0	45-15.0	4-16	.250	1-7	.143	1-2	.500	6-5	11-3.7	6-0	1	2	0	3	10-3.3
TOTAL	3-0	45-15.0	4-16	.250	1-7	.143	1-2	.500	6-5	11-3.7	6-0	1	2	0	3	10-3.3



# KENTUCKY WBB 2017-18 PLAYER BIOS

4

MACI MORRIS • 6-0 • GUARD • JUNIOR

PINEVILLE, KY. (BELL COUNTY HS)



### 2017-18 (Junior)

- Had a season-high 16 points at Montana on Nov. 16.
- The only player on the team to record double-digit scoring in all three games this far.
- Is just three 3-pointers away from entering UK's career top 10.
- Recorded her first career double-double vs. Gardner-Webb on Nov. 12, adding 10 points and a career-high 10 boards.
- Led UK in rebounds, assists, blocks and steals vs. GWU.
- Had a career-high three blocks vs. GWU.
- Matched a career high with four assists in the win over Gardner-Webb.
- Was one of five Wildcats to post double-digit scoring efforts in the season opener vs. Sacramento State, adding 12 points.

### 2017-18 Season Highs

POINTS:	16 at Montana, 11/16/17
FGM:	5 at Montana, 11/16/17
FGA:	13 vs. Gardner-Webb, 11/12/17
FTM:	3 at Montana, 11/16/17
FTA:	3 at Montana, 11/16/17
3FGM:	3 at Montana, 11/16/17
3FGA:	6 at Montana, 11/16/17
O-REBOUNDS:	1, twice, last vs. Gardner-Webb, 11/12/17
D-REBOUNDS:	9 vs. Gardner-Webb, 11/12/17
TOTAL REBOUNDS:	10 vs. Gardner-Webb, 11/12/17
ASSISTS:	4 vs. Gardner-Webb, 11/12/17
BLOCKS:	3 vs. Gardner-Webb, 11/12/17
STEALS:	1, twice, last vs. Gardner-Webb, 11/12/17
MINUTES:	32 vs. Gardner-Webb, 11/12/17

### Career Highs

POINTS:	29 vs. Arizona St., 12/11/16
FGM:	9 vs. Arizona St., 12/11/16
FGA:	21 at Tennessee, 01/01/17
FTM:	9 vs. Arizona St., 12/11/16
FTA:	9 vs. Arizona St., 12/11/16
3FGM:	5, twice, last vs. Ole Miss, 01/26/17
3FGA:	10 at Auburn, 01/22/17
O-REBOUNDS:	3 vs. Morehead State, 11/23/16
D-REBOUNDS:	9, twice, last vs. Gardner-Webb, 11/12/17
TOTAL REBOUNDS:	10 vs. Gardner-Webb, 11/12/17
ASSISTS:	4, 3x, last vs. Gardner-Webb, 11/12/17
BLOCKS:	3 vs. Gardner-Webb, 11/12/17
STEALS:	2, 7x, last vs. Belmont, 03/17/17
MINUTES:	42 at Louisville, 12/04/16

### Morris' 2017-18 Game-by-Game Statistics

Opponent	Min	FG-A	3PT-A	FT-A	O-D-T	PF	A	TO	BS	ST	PTS
vs. Sacramento St.	16*	4-8	2-3	2-2	1-3-4	3	2	1	0	1	12
vs. Gardner-Webb	32*	4-13	0-5	2-2	1-9-10	2	4	2	3	1	10
at Montana	31*	5-8	3-6	3-3	0-2-2	4	2	2	1	0	16
at Washington St.											
vs. Morehead St.											
vs. Marshall											
at Baylor											
vs. Tennessee Tech											
vs. Evansville											
at FGCU											
at Miami (Fla.)											
vs. Louisville											
vs. California											
at Middle Tennessee											
vs. Tennessee											
at TAMU											
vs Georgia											
at Florida											
at Vanderbilt											
vs. South Carolina											
vs. Alabama											
at Arkansas											
vs. Auburn											
vs. LSU											
at Missouri											
at Mississippi St.											
vs. Arkansas											
at South Carolina											
at Ole Miss											
vs. Mississippi St.											

\* Started game

### Extras

	17-18	Career
Scored 10+ Points	3	41
Scored 15+ Points	1	12
Scored 20+ Points	-	1
Made 3+ 3FG	1	13
Double-figure Rebounds	1	1
Double-doubles	1	1
3+ Assists	1	12
2+ Steals	-	7
Led UK in Scoring	-	5
Led UK in Rebounds	1	3
Led UK in Assists	1	5
Led UK in Blocks	2	13

### Maci Morris' Career Stats

Year	GP-GS	MIN	FG-FGA	PCT	3FG-FGA	PCT	FT-FTA	PCT	OFF-DEF	TOT-AVG	PF-FO	A	TO	BLK	ST	PTS-AVG
2015-16	33-33	820-24.8	101-254	.398	49-125	.392	30-35	.857	8-77	85-2.6	78-4	31	54	7	19	281-8.5
2016-17	33-33	1078-32.7	132-383	.345	53-164	.323	74-84	.881	13-78	91-2.8	90-2	52	83	20	20	391-11.8
2017-18	3-3	79-26.3	13-29	.448	5-14	.357	7-7	1.000	2-14	16-5.3	9-0	8	5	4	2	38-12.7
TOTAL	69-69	1977-28.7	246-666	.369	107-303	.353	111-126	.881	23-169	192-2.8	177-6	91	142	31	41	710-10.3

# KENTUCKY WBB 2017-18 PLAYER BIOS

12

AMANDA PASCHAL • 5-7 • GUARD • JUNIOR

BROOKLYN, N.Y. (GULF COAST STATE COLLEGE/CHIPLEY HS)



### 2017-18 (Junior)

- Had four points, five rebounds and two dimes vs. GWU on Nov. 12.
- Added five points in 17 minutes of action in her Kentucky debut vs. Sacramento State.
- Played the second-most minutes of UK's four newcomers against the Hornets.
- Experienced player that won a junior college national championship.
- Missed her second year of junior college with an injury, but came into summer workouts motivated and was able to participate in summer workouts.

### 2017-18 Season Highs

POINTS:	5 vs. Sacramento St., 11/10/17
FGM:	2 vs. Gardner-Webb, 11/12/17
FGA:	4 vs. Gardner-Webb, 11/12/17
FTM:	3 vs. Sacramento St., 11/10/17
FTA:	4 vs. Sacramento St., 11/10/17
3FGM:	-
3FGA:	1, twice, last vs. Gardner-Webb, 11/12/17
O-REBOUNDS:	1 vs. Gardner-Webb, 11/12/17
D-REBOUNDS:	4 vs. Gardner-Webb, 11/12/17
TOTAL REBOUNDS:	5 vs. Gardner-Webb, 11/12/17
ASSISTS:	2, twice, last vs. Gardner-Webb, 11/12/17
BLOCKS:	-
STEALS:	-
MINUTES:	17 vs. Sacramento St., 11/10/17

### Career Highs

POINTS:	5 vs. Sacramento St., 11/10/17
FGM:	2 vs. Gardner-Webb, 11/12/17
FGA:	4 vs. Gardner-Webb, 11/12/17
FTM:	3 vs. Sacramento St., 11/10/17
FTA:	4 vs. Sacramento St., 11/10/17
3FGM:	-
3FGA:	1, twice, last vs. Gardner-Webb, 11/12/17
O-REBOUNDS:	1 vs. Gardner-Webb, 11/12/17
D-REBOUNDS:	4 vs. Gardner-Webb, 11/12/17
TOTAL REBOUNDS:	5 vs. Gardner-Webb, 11/12/17
ASSISTS:	2, twice, last vs. Gardner-Webb, 11/12/17
BLOCKS:	-
STEALS:	-
MINUTES:	17 vs. Sacramento St., 11/10/17

### Paschal's 2017-18 Game-by-Game Statistics

Opponent	Min	FG-A	3PT-A	FT-A	O-D-T	PF	A	TO	BS	ST	PTS
vs. Sacramento St.	17	1-2	0-1	3-4	0-0-0	0	2	0	0	0	5
vs. Gardner-Webb	15	2-4	0-1	0-0	1-4-5	1	2	0	0	0	4
at Montana	8	0-2	0-1	0-0	0-1-1	1	1	1	0	0	0
at Washington St.											
vs. Morehead St.											
vs. Marshall											
at Baylor											
vs. Tennessee Tech											
vs. Evansville											
at FGCU											
at Miami (Fla.)											
vs. Louisville											
vs. California											
at Middle Tennessee											
vs. Tennessee											
at TAMU											
vs Georgia											
at Florida											
at Vanderbilt											
vs. South Carolina											
vs. Alabama											
at Arkansas											
vs. Auburn											
vs. LSU											
at Missouri											
at Mississippi St.											
vs. Arkansas											
at South Carolina											
at Ole Miss											
vs. Mississippi St.											

\* Started game

### Extras

	17-18	Career
Scored 10+ Points	-	-
Scored 15+ Points	-	-
Scored 20+ Points	-	-
Double-figure Rebounds	-	-
Double-doubles	-	-
3+ Assists	-	-
2+ Steals	-	-
Led UK in Scoring	-	-
Led UK in Rebounds	-	-
Led UK in Assists	-	-
Led UK in Steals	-	-
Led UK in Blocks	-	-

### Amanda Paschal's Career Stats

Year	GP-GS	MIN	FG-FGA	PCT	3FG-FGA	PCT	FT-FTA	PCT	OFF-DEF	TOT-AVG	PF-FO	A	TO	BLK	ST	PTS-AVG
2017-18	3-0	40-13.3	3-8	.375	0-3	.000	3-4	.750	1-5	6-2.0	2-0	5	1	0	0	9-3.0
TOTAL	3-0	40-13.3	3-8	.375	0-3	.000	3-4	.750	1-5	6-2.0	2-0	5	1	0	0	9-3.0

# KENTUCKY WBB 2017-18 PLAYER BIOS

14

TATYANA WYATT • 6-2 • FORWARD • FRESHMAN

COLUMBUS, GA. (COLUMBUS HS)



### 2017-18 (Freshman)

- Sat out the Gardner-Webb game due to concussion protocol.
- Added 13 points in just 15 minutes of play in her collegiate debut.
- Went 5-of-6 from the floor, and 2-of-3 from the charity stripe in the contest.
- Was the highest-scoring newcomer in Kentucky's season opener.
- Also had two boards and one steal in the win over Sacramento State.

### 2017-18 Season Highs

POINTS:	13 vs. Sacramento St., 11/10/17
FGM:	5 vs. Sacramento St., 11/10/17
FGA:	6 vs. Sacramento St., 11/10/17
FTM:	2 vs. Sacramento St., 11/10/17
FTA:	3 vs. Sacramento St., 11/10/17
3FGM:	1 vs. Sacramento St., 11/10/17
3FGA:	2 vs. Sacramento St., 11/10/17
O-REBOUNDS:	-
D-REBOUNDS:	2 vs. Sacramento St., 11/10/17
TOTAL REBOUNDS:	2 vs. Sacramento St., 11/10/17
ASSISTS:	-
BLOCKS:	-
STEALS:	1 vs. Sacramento St., 11/10/17
MINUTES:	15 vs. Sacramento St., 11/10/17

### Career Highs

POINTS:	13 vs. Sacramento St., 11/10/17
FGM:	5 vs. Sacramento St., 11/10/17
FGA:	6 vs. Sacramento St., 11/10/17
FTM:	2 vs. Sacramento St., 11/10/17
FTA:	3 vs. Sacramento St., 11/10/17
3FGM:	1 vs. Sacramento St., 11/10/17
3FGA:	2 vs. Sacramento St., 11/10/17
O-REBOUNDS:	-
D-REBOUNDS:	2 vs. Sacramento St., 11/10/17
TOTAL REBOUNDS:	2 vs. Sacramento St., 11/10/17
ASSISTS:	-
BLOCKS:	-
STEALS:	1 vs. Sacramento St., 11/10/17
MINUTES:	15 vs. Sacramento St., 11/10/17

### Wyatt's 2017-18 Game-by-Game Statistics

Opponent	Min	FG-A	3PT-A	FT-A	O-D-T	PF	A	TO	BS	ST	PTS
vs. Sacramento St.	15	5-6	1-2	2-3	0-2-2	2	0	1	0	1	13
vs. Gardner-Webb					DNP - Concussion						
at Montana					DNP - Concussion						
at Washington St.											
vs. Morehead St.											
vs. Marshall											
at Baylor											
vs. Tennessee Tech											
vs. Evansville											
at FGCU											
at Miami (Fla.)											
vs. Louisville											
vs. California											
at Middle Tennessee											
vs. Tennessee											
at TAMU											
vs Georgia											
at Florida											
at Vanderbilt											
vs. South Carolina											
vs. Alabama											
at Arkansas											
vs. Auburn											
vs. LSU											
at Missouri											
at Mississippi St.											
vs. Arkansas											
at South Carolina											
at Ole Miss											
vs. Mississippi St.											

\* Started game

### Extras

	17-18	Career
Scored 10+ Points	1	1
Scored 15+ Points	-	-
Scored 20+ Points	-	-
Made 3+ 3FG	-	-
Double-figure Rebounds	-	-
Double-doubles	-	-
3+ Assists	-	-
2+ Steals	-	-
Led UK in Scoring	-	-
Led UK in Rebounds	-	-
Led UK in Assists	-	-
Led UK in Steals	-	-
Led UK in Blocks	-	-

### Tatyana Wyatt's Career Stats

Year	GP-GS	MIN	FG-FGA	PCT	3FG-FGA	PCT	FT-FTA	PCT	OFF-DEF	TOT-AVG	PF-FO	A	TO	BLK	ST	PTS-AVG
2017-18	1-0	15-15.0	5-6	.833	1-2	.500	2-3	.667	0-2	2-2.0	2-0	0	1	0	1	13-13.0
TOTAL	1-0	15-15.0	5-6	.833	1-2	.500	2-3	.667	0-2	2-2.0	2-0	0	1	0	1	13-13.0



# KENTUCKY WBB 2017-18 PLAYER BIOS

15

JESSICA HARDIN • 5-8 • GUARD • R-SENIOR

MONTICELLO, KY. (BELLARMINE/WAYNE COUNTY HS)



### 2017-18 (Redshirt-Senior)

- Added one 3-pointer and one assist in the win over GWU.
- Played five minutes with one assist in UK's 2017-18 season opener.
- Former Kentucky high school standout that played at Bellarmine her freshman season before transferring to UK to focus on academics.
- Walked on the team during the summer of 2016 and impressed the coaches with her work ethic and skill and was awarded a scholarship at the end of summer workouts.
- Played in 16 games with 12.3 minutes per game in 2016-17, missing significant time after non-conference play due to a concussion.
- Led the Wildcats in 3-point percentage last season, going 12-of-33 from long range.

### 2017-18 Season Highs

POINTS:	3 vs. Gardner-Webb, 11/12/17
FGM:	1 vs. Gardner-Webb, 11/12/17
FGA:	2 vs. Gardner-Webb, 11/12/17
FTM:	-
FTA:	-
3FGM:	1 vs. Gardner-Webb, 11/12/17
3FGA:	2 vs. Gardner-Webb, 11/12/17
O-REBOUNDS:	-
D-REBOUNDS:	1 vs. Gardner-Webb, 11/12/17
TOTAL REBOUNDS:	1 vs. Gardner-Webb, 11/12/17
ASSISTS:	1, twice, last vs. Gardner-Webb, 11/12/17
BLOCKS:	-
STEALS:	-
MINUTES:	8 at Montana, 11/16/17

### Career Highs

POINTS:	19 vs. Quincy, 02/06/14
FGM:	7 vs. Quincy, 02/06/14
FGA:	14, 3x, last vs. Maryville, 03/02/14
FTM:	6, vs. North Alabama, 11/17/13
FTA:	7 vs. Truman State, 02/08/14
3FGM:	5, 3x, last vs. Quincy, 02/06/14
3FGA:	11, at Maryville, 03/02/14
O-REBOUNDS:	5, vs. William Jewell, 01/03/14
D-REBOUNDS:	5, vs. Missouri-St. Louis, 02/13/14
TOTAL REBOUNDS:	7, 2x, last vs. Missouri-St. Louis, 02/13/14
ASSISTS:	3, vs. Indianapolis, 02/22/14
BLOCKS:	1, 4x, last vs. Missouri-St. Louis, 02/13/14
STEALS:	3, vs. Kentucky State, 11/24/13
MINUTES:	29, vs. Southern Indiana, 01/20/14

### Hardin's 2017-18 Game-by-Game Statistics

Opponent	Min	FG-A	3PT-A	FT-A	O-D-T	PF	A	TO	BS	ST	PTS
vs. Sacramento St.	5	0-0	0-0	0-0	0-0-0	0	1	1	0	0	0
vs. Gardner-Webb	7	1-2	1-2	0-0	0-1-1	1	1	0	0	0	3
at Montana	8	0-2	0-1	0-0	0-0-0	0	0	0	0	0	0
at Washington St.											
vs. Morehead St.											
vs. Marshall											
at Baylor											
vs. Tennessee Tech											
vs. Evansville											
at FGCU											
at Miami (Fla.)											
vs. Louisville											
vs. California											
at Middle Tennessee											
vs. Tennessee											
at TAMU											
vs Georgia											
at Florida											
at Vanderbilt											
vs. South Carolina											
vs. Alabama											
at Arkansas											
vs. Auburn											
vs. LSU											
at Missouri											
at Mississippi St.											
vs. Arkansas											
at South Carolina											
at Ole Miss											
vs. Mississippi St.											

\* Started game

### Extras

	17-18	Career
Scored 10+ Points	-	12
Scored 15+ Points	-	4
Scored 20+ Points	-	-
Made 3+ 3FG	-	10
Double-figure Rebounds	-	-
Double-doubles	-	-
3+ Assists	-	1
2+ Steals	-	4
Led UK in Scoring	-	-
Led UK in Rebounds	-	-
Led UK in Assists	-	-
Led UK in Steals	-	1
Led UK in Blocks	-	1

### Jessica Hardin's Career Stats

Year	GP-GS	MIN	FG-FGA	PCT	3FG-FGA	PCT	FT-FTA	PCT	OFF-DEF	TOT-AVG	PF-FO	A	TO	BLK	ST	PTS-AVG
2013-14*	26-16	535-20.5	80-217	.369	52-140	.371	37-54	.685	28-45	73-2.8	74-2	23	33	4	20	249-9.6
2016-17	16-0	196-12.3	15-52	.288	12-33	.364	7-9	.778	7-14	21-1.3	19-0	5	2	1	2	49-3.1
2017-18	3-0	20-6.7	1-4	.250	1-3	.333	0-0	.000	0-1	1-0.3	1-0	2	1	0	0	3-1.0
TOTAL	45-16	751-16.7	96-273	.352	65-176	.369	44-63	.698	35-60	95-2.1	94-2	30	36	5	22	301-6.7

# KENTUCKY WBB 2017-18 PLAYER BIOS

20

DORIE HARRISON • 6-3 • CENTER • FRESHMAN

NASHVILLE, TENN. (HILLSBORO HS)



## 2017-18 (Freshman)

- Had five points with five rebounds vs. GWU on Nov. 12.
- Earned the starting spot in her regular season debut for Kentucky.
- Was just one rebound shy of a double-double, posting 10 points and nine boards against Sacramento State.
- Scored all 10 of her points in the second half.
- She also had three assists and one block in Kentucky's win.

## 2017-18 Season Highs

POINTS:	10 vs. Sacramento St., 11/10/17
FGM:	4, twice, last at Montana, 11/16/17
FGA:	12 vs. Gardner-Webb, 11/12/17
FTM:	2 vs. Sacramento St., 11/10/17
FTA:	5 vs. Sacramento St., 11/10/17
3FGM:	-
3FGA:	-
O-REBOUNDS:	4 vs. Gardner-Webb, 11/12/17
D-REBOUNDS:	7 vs. Sacramento St., 11/10/17
TOTAL REBOUNDS:	9 vs. Sacramento St., 11/10/17
ASSISTS:	3 vs. Sacramento St., 11/10/17
BLOCKS:	1 vs. Sacramento St., 11/10/17
STEALS:	-
MINUTES:	26 at Montana, 11/16/17

## Career Highs

POINTS:	10 vs. Sacramento St., 11/10/17
FGM:	4, twice, last at Montana, 11/16/17
FGA:	12 vs. Gardner-Webb, 11/12/17
FTM:	2 vs. Sacramento St., 11/10/17
FTA:	5 vs. Sacramento St., 11/10/17
3FGM:	-
3FGA:	-
O-REBOUNDS:	4 vs. Gardner-Webb, 11/12/17
D-REBOUNDS:	7 vs. Sacramento St., 11/10/17
TOTAL REBOUNDS:	9 vs. Sacramento St., 11/10/17
ASSISTS:	3 vs. Sacramento St., 11/10/17
BLOCKS:	1 vs. Sacramento St., 11/10/17
STEALS:	-
MINUTES:	26 at Montana, 11/16/17

## Harrison's 2017-18 Game-by-Game Statistics

Opponent	Min	FG-A	3PT-A	FT-A	O-D-T	PF	A	TO	BS	ST	PTS
vs. Sacramento St.	20*	4-11	0-0	2-5	2-7-9	3	3	2	1	0	10
vs. Gardner-Webb	21*	2-12	0-0	1-2	4-1-5	1	0	0	0	0	5
at Montana	26*	4-8	0-0	1-2	3-5-8	0	1	2	0	0	9
at Washington St.											
vs. Morehead St.											
vs. Marshall											
at Baylor											
vs. Tennessee Tech											
vs. Evansville											
at FGCU											
at Miami (Fla.)											
vs. Louisville											
vs. California											
at Middle Tennessee											
vs. Tennessee											
at TAMU											
vs Georgia											
at Florida											
at Vanderbilt											
vs. South Carolina											
vs. Alabama											
at Arkansas											
vs. Auburn											
vs. LSU											
at Missouri											
at Mississippi St.											
vs. Arkansas											
at South Carolina											
at Ole Miss											
vs. Mississippi St.											

\* Started game

## Extras

	17-18	Career
Scored 10+ Points	1	1
Scored 15+ Points	-	-
Scored 20+ Points	-	-
Made 3+ 3FG	-	-
Double-figure Rebounds	-	-
Double-doubles	-	-
3+ Assists	1	1
2+ Steals	-	-
Led UK in Scoring	-	-
Led UK in Rebounds	1	1
Led UK in Assists	1	1
Led UK in Steals	-	-
Led UK in Blocks	1	1

## Dorie Harrison's Career Stats

Year	GP-GS	MIN	FG-FGA	PCT	3FG-FGA	PCT	FT-FTA	PCT	OFF-DEF	TOT-AVG	PF-FO	A	TO	BLK	ST	PTS-AVG
2017-18	3-3	67-22.3	10-31	.323	0-0	.000	4-9	.444	9-13	22-7.3	4-0	4	4	1	0	24-8.0
TOTAL	3-3	67-22.3	10-31	.323	0-0	.000	4-9	.444	9-13	22-7.3	4-0	4	4	1	0	24-8.0

# KENTUCKY WBB 2017-18 PLAYER BIOS

21

OGECHI ANYAGALIGBO • 6-1 • FORWARD • JUNIOR

MIAMI, FLA. (STONY BROOK/MIAMI COUNTRY DAY)



### 2017-18 (Junior)

- Sustained a torn ACL in her left knee during the exhibition vs. Southern Indiana and will miss the entire 2017-18 season.
- Transfer from Stony Brook that had to sit out last season due to NCAA transfer rules, but practiced with the team.
- Was named the America East Conference Rookie of the Year last season at Stony Brook after averaging 10.1 points and 9.0 rebounds per game.

### 2017-18 Season Highs

POINTS:	-
FGM:	-
FGA:	-
FTM:	-
FTA:	-
3FGM:	-
3FGA:	-
O-REBOUNDS:	-
D-REBOUNDS:	-
TOTAL REBOUNDS:	-
ASSISTS:	-
BLOCKS:	-
STEALS:	-
MINUTES:	-

### Career Highs

POINTS:	23 vs. LIU, 12/21/15
FGM:	10 vs. LIU, 12/21/15
FGA:	16 vs. LIU, 12/21/15
FTM:	4 vs. Hartford, 03/05/16
FTA:	6 vs. Syracuse, 12/06/15
3FGM:	-
3FGA:	-
O-REBOUNDS:	5, 2x, last vs. Hartford, 12/30/15
D-REBOUNDS:	16 vs. Wagner, 12/18/15
TOTAL REBOUNDS:	19 vs. Wagner, 12/18/15
ASSISTS:	3 vs. UMBC, 01/13/16
BLOCKS:	4 vs. New Hampshire, 1/16/16
STEALS:	3 vs. New Hampshire, 1/16/16
MINUTES:	39 vs. St. Bonaventure, 12/01/15

### Anyagaligbo's 2017-18 Game-by-Game Statistics

Opponent	Min	FG-A	3PT-A	FT-A	O-D-T	PF	A	TO	BS	ST	PTS
vs. Sacramento St.											
vs. Gardner-Webb											
at Montana											
at Washington St.											
vs. Morehead St.											
vs. Marshall											
at Baylor											
vs. Tennessee Tech											
vs. Evansville											
at FGCU											
at Miami (Fla.)											
vs. Louisville											
vs. California											
at Middle Tennessee											
vs. Tennessee											
at TAMU											
vs Georgia											
at Florida											
at Vanderbilt											
vs. South Carolina											
vs. Alabama											
at Arkansas											
vs. Auburn											
vs. LSU											
at Missouri											
at Mississippi St.											
vs. Arkansas											
at South Carolina											
at Ole Miss											
vs. Mississippi St.											

\* Started game

### Extras

	17-18	Career
Scored 10+ Points	-	16
Scored 15+ Points	-	4
Scored 20+ Points	-	1
Made 3+ 3FG	-	-
Double-figure Rebounds	-	12
Double-doubles	-	9
3+ Assists	-	-
2+ Steals	-	7
Led UK in Scoring	-	-
Led UK in Rebounds	-	-
Led UK in Assists	-	-
Led UK in Steals	-	-
Led UK in Blocks	-	-

### Ogechi Anyagaligbo's Career Stats

Year	GP-GS	MIN	FG-FGA	PCT	3FG-FGA	PCT	FT-FTA	PCT	OFF-DEF	TOT-AVG	PF-FO	A	TO	BLK	ST	PTS-AVG
2015-16*	32-31	916-28.6	135-243	.556	0-0	.000	54-89	.607	75-214	289-9.0	81-2	23	81	41	26	324-10.1
2016-17																
2017-18																
TOTAL	32-31	916-28.6	135-243	.556	0-0	.000	54-89	.607	75-214	289-9.0	81-2	23	81	41	26	324-10.1

\* at Stony Brook



# KENTUCKY WBB 2017-18 PLAYER BIOS

22

MAKENZIE CANN • 6-1 • GUARD • SENIOR

LAWRENCEBURG, KY. (CINCINNATI/ANDERSON COUNTY HS)



### 2017-18 (Senior)

- One of four Wildcats to post double-digit scoring effort vs. GWU, scoring 10 points on 4-of-7 shooting.
- Set a career high with four offensive boards vs. Gardner-Webb.
- Kentucky's second-highest scoring performer in the season opening win, adding 17 points on 4-of-6 3-point shooting.
- Also added six rebounds and one assist vs. Sacramento State.
- Tied a career high vs. Sacramento State with three offensive boards.
- Her 17 points vs. Sacramento State marked her highest point production since Nov. 17 of last season, where she scored a career-high 20 points vs. New Hampshire.

### 2017-18 Season Highs

POINTS:	17 vs. Sacramento St., 11/10/17
FGM:	6 vs. Sacramento St., 11/10/17
FGA:	9 vs. Sacramento St., 11/10/17
FTM:	1 vs. Sacramento St., 11/10/17
FTA:	1 vs. Sacramento St., 11/10/17
3FGM:	4 vs. Sacramento St., 11/10/17
3FGA:	6 vs. Sacramento St., 11/10/17
O-REBOUNDS:	4 vs. Gardner-Webb, 11/12/17
D-REBOUNDS:	3, twice, last vs. Gardner-Webb, 11/12/17
TOTAL REBOUNDS:	7 vs. Gardner-Webb, 11/12/17
ASSISTS:	2 at Montana, 11/16/17
BLOCKS:	1 vs. Gardner-Webb, 11/12/17
STEALS:	2 at Montana, 11/16/17
MINUTES:	29 vs. Sacramento St., 11/10/17

### Career Highs

POINTS:	23 vs. UCF, 03/06/15
FGM:	6, 4x, last vs. Sacramento St., 11/10/17
FGA:	12, twice, last at South Carolina, 02/26/17
FTM:	5, twice, last vs. UCF, 03/06/15
FTA:	6 vs. UCF, 03/06/15
3FGM:	6, twice, last vs. New Hampshire, 11/17/16
3FGA:	12 vs. USF, 02/07/15
O-REBOUNDS:	4 vs. Gardner-Webb, 11/12/17
D-REBOUNDS:	6, twice, last vs. Ohio State, 03/19/17
TOTAL REBOUNDS:	8, twice, last vs. Ohio State, 03/19/17
ASSISTS:	4 vs. New Hampshire, 11/17/16
BLOCKS:	1, 8x, last vs. Vanderbilt, 02/05/17
STEALS:	5 at Duke, 12/29/16
MINUTES:	45 at Louisville, 12/04/16

### Cann's 2017-18 Game-by-Game Statistics

Opponent	Min	FG-A	3PT-A	FT-A	O-D-T	PF	A	TO	BS	ST	PTS
vs. Sacramento St.	29*	6-9	4-6	1-1	3-3-6	1	1	2	0	0	17
vs. Gardner-Webb	24*	4-7	2-4	0-0	4-3-7	1	0	1	1	1	10
at Montana	23*	2-5	2-5	0-0	0-0-0	4	2	1	0	2	6
at Washington St.											
vs. Morehead St.											
vs. Marshall											
at Baylor											
vs. Tennessee Tech											
vs. Evansville											
at FGCU											
at Miami (Fla.)											
vs. Louisville											
vs. California											
at Middle Tennessee											
vs. Tennessee											
at TAMU											
vs Georgia											
at Florida											
at Vanderbilt											
vs. South Carolina											
vs. Alabama											
at Arkansas											
vs. Auburn											
vs. LSU											
at Missouri											
at Mississippi St.											
vs. Arkansas											
at South Carolina											
at Ole Miss											
vs. Mississippi St.											

\* Started game

### Extras

	17-18	Career
Scored 10+ Points	2	17
Scored 15+ Points	1	5
Scored 20+ Points	-	2
Made 3+ 3FG	1	11
Double-figure Rebounds	-	-
Double-doubles	-	-
3+ Assists	-	10
2+ Steals	-	4
Led UK in Scoring	-	1
Led UK in Rebounds	-	-
Led UK in Assists	-	2
Led UK in Steals	1	6
Led UK in Blocks	-	2

### Makenzie Cann's Career Stats

Year	GP-GS	MIN	FG-FGA	PCT	3FG-FGA	PCT	FT-FTA	PCT	OFF-DEF	TOT-AVG	PF-FO	A	TO	BLK	ST	PTS-AVG
2014-15*	31-1	710-22.9	66-191	.346	51-139	.367	33-39	.846	8-50	58-1.9	36-0	37	21	5	11	216-7.0
2015-16									DNP-Transfer							
2016-17	32-4	897-28.0	63-198	.318	42-152	.276	16-25	.640	40-72	112-3.5	44-0	37	30	3	18	184-5.8
2017-18	3-3	76-25.3	12-21	.571	8-15	.533	1-1	1.000	7-6	13-4.3	6-0	3	4	1	3	33-11.0
TOTAL	66-8	1683-25.5	141-410	.344	101-306	.330	50-65	.769	55-128	183-2.8	86-0	77	55	9	32	433-6.6

\* at Cincinnati

# KENTUCKY WBB 2017-18 PLAYER BIOS

23

KAMERON ROACH • 5-6 • GUARD • FRESHMAN

HOPKINS, S.C. (LOWER RICHLAND HS)



### 2017-18 (Freshman)

- Had four points on 2-of-2 shooting and added two defensive boards in nine minutes vs. GWU.
- Added six points, two boards, three assists, one block and one steal in her collegiate debut.
- Played 16 minutes in the season opener vs. Sacramento State.
- Went 4-of-4 from the charity stripe in the season opener.
- Missed her senior year of high school with an injury, but performed well during summer conditioning and workouts.
- Was a four-star prospect according to ProspectsNation.com and three-star guard by ESPN.com.

### 2017-18 Season Highs

POINTS:	6 vs. Sacramento St., 11/10/17
FGM:	2 vs. Gardner-Webb, 11/12/17
FGA:	5 vs. Sacramento St., 11/10/17
FTM:	4 vs. Sacramento St., 11/10/17
FTA:	4 vs. Sacramento St., 11/10/17
3FGM:	-
3FGA:	-
O-REBOUNDS:	1 vs. Sacramento St., 11/10/17
D-REBOUNDS:	2 vs. Gardner-Webb, 11/12/17
TOTAL REBOUNDS:	2, twice, last vs. Gardner-Webb, 11/12/17
ASSISTS:	3 vs. Sacramento St., 11/10/17
BLOCKS:	1 vs. Sacramento St., 11/10/17
STEALS:	1 vs. Sacramento St., 11/10/17
MINUTES:	16 vs. Sacramento St., 11/10/17

### Career Highs

POINTS:	6 vs. Sacramento St., 11/10/17
FGM:	2 vs. Gardner-Webb, 11/12/17
FGA:	5 vs. Sacramento St., 11/10/17
FTM:	4 vs. Sacramento St., 11/10/17
FTA:	4 vs. Sacramento St., 11/10/17
3FGM:	-
3FGA:	-
O-REBOUNDS:	1 vs. Sacramento St., 11/10/17
D-REBOUNDS:	2 vs. Gardner-Webb, 11/12/17
TOTAL REBOUNDS:	2, twice, last vs. Gardner-Webb, 11/12/17
ASSISTS:	3 vs. Sacramento St., 11/10/17
BLOCKS:	1 vs. Sacramento St., 11/10/17
STEALS:	1 vs. Sacramento St., 11/10/17
MINUTES:	16 vs. Sacramento St., 11/10/17

### Roach's 2017-18 Game-by-Game Statistics

Opponent	Min	FG-A	3PT-A	FT-A	O-D-T	PF	A	TO	BS	ST	PTS
vs. Sacramento St.	16	1-5	0-0	4-4	1-1-2	0	3	2	1	1	6
vs. Gardner-Webb	9	2-2	0-0	0-0	0-2-2	1	0	2	0	0	4
at Montana	4	0-0	0-0	0-0	0-0-0	1	0	0	0	0	0
at Washington St.											
vs. Morehead St.											
vs. Marshall											
at Baylor											
vs. Tennessee Tech											
vs. Evansville											
at FGCU											
at Miami (Fla.)											
vs. Louisville											
vs. California											
at Middle Tennessee											
vs. Tennessee											
at TAMU											
vs Georgia											
at Florida											
at Vanderbilt											
vs. South Carolina											
vs. Alabama											
at Arkansas											
vs. Auburn											
vs. LSU											
at Missouri											
at Mississippi St.											
vs. Arkansas											
at South Carolina											
at Ole Miss											
vs. Mississippi St.											

\* Started game

### Extras

	17-18	Career
Scored 10+ Points	-	-
Scored 15+ Points	-	-
Scored 20+ Points	-	-
Made 3+ 3FG	-	-
Double-figure Rebounds	-	-
Double-doubles	-	-
3+ Assists	1	1
2+ Steals	-	-
Led UK in Scoring	-	-
Led UK in Rebounds	-	-
Led UK in Assists	1	1
Led UK in Steals	-	-
Led UK in Blocks	1	1

### Kameron Roach's Career Stats

Year	GP-GS	MIN	FG-FGA	PCT	3FG-FGA	PCT	FT-FTA	PCT	OFF-DEF	TOT-AVG	PF-FO	A	TO	BLK	ST	PTS-AVG
2017-18	3-0	29-9.7	3-7	.429	0-0	.000	4-4	1.000	1-3	4-1.3	2-0	3	4	1	1	10-3.3
TOTAL	3-0	29-9.7	3-7	.429	0-0	.000	4-4	1.000	1-3	4-1.3	2-0	3	4	1	1	10-3.3

# KENTUCKY WBB 2017-18 PLAYER BIOS

24

TAYLOR MURRAY • 5-6 • GUARD • JUNIOR

ODENTON, MD. (ANNAPOLIS AREA CHRISTIAN)



### 2017-18 (Junior)

- Was the stat leader in points, rebounds, assists and steals at Montana on Nov. 16.
- Recorded her third career double-double at Montana, adding 18 points and 12 boards.
- Is 13-of-13 from the free throw line this season.
- Led the Wildcats with 22 points in the season opener against Sacramento State, going 8-of-12 from the floor and 5-of-5 from the free throw line.
- Murray's 22 points vs. Sacramento State marked the third-highest of her Kentucky career and the fourth 20-point game of her career, with all three previous 20-point games coming in her sophomore campaign.
- Tied a career high with one block in the win over the Hornets.

### 2017-18 Season Highs

POINTS:	22 vs. Sacramento St., 11/10/17
FGM:	8 vs. Sacramento St., 11/10/17
FGA:	12, twice, last vs. Gardner-Webb, 11/12/17
FTM:	6 at Montana, 11/16/17
FTA:	6 at Montana, 11/16/17
3FGM:	2 at Montana, 11/16/17
3FGA:	6 at Montana, 11/16/17
O-REBOUNDS:	3 at Montana, 11/16/17
D-REBOUNDS:	9 at Montana, 11/16/17
TOTAL REBOUNDS:	12 at Montana, 11/16/17
ASSISTS:	3, 3x, last at Montana, 11/16/17
BLOCKS:	1 vs. Sacramento St., 11/10/17
STEALS:	3 at Montana, 11/16/17
MINUTES:	32 at Montana, 11/16/17

### Career Highs

POINTS:	29 at South Carolina, 02/26/17
FGM:	9 at South Carolina, 02/26/17
FGA:	15, twice, last vs. Vanderbilt, 02/05/17
FTM:	10 at Missouri, 01/30/17
FTA:	10, twice, last at Missouri, 01/30/17
3FGM:	2, 7x, last at Montana, 11/16/17
3FGA:	6, 3x, last at Montana, 11/16/17
O-REBOUNDS:	8 at Missouri, 01/30/17
D-REBOUNDS:	11 at LSU, 01/19/17
TOTAL REBOUNDS:	13, twice, last at Missouri, 01/30/17
ASSISTS:	11 vs. Florida, 02/19/17
BLOCKS:	1, 3x, last vs. Sacramento St., 11/10/17
STEALS:	6, twice, last at Arkansas, 02/16/17
MINUTES:	44 at Louisville, 12/04/16

### Murray's 2017-18 Game-by-Game Statistics

Opponent	Min	FG-A	3PT-A	FT-A	O-D-T	PF	A	TO	BS	ST	PTS
vs. Sacramento St.	29*	8-12	1-3	5-5	0-5-5	2	3	0	1	1	22
vs. Gardner-Webb	25*	3-12	0-3	2-2	0-4-4	1	3	0	0	1	8
at Montana	32*	5-11	2-6	6-6	3-9-12	4	3	2	0	3	18
at Washington St.											
vs. Morehead St.											
vs. Marshall											
at Baylor											
vs. Tennessee Tech											
vs. Evansville											
at FGCU											
at Miami (Fla.)											
vs. Louisville											
vs. California											
at Middle Tennessee											
vs. Tennessee											
at TAMU											
vs Georgia											
at Florida											
at Vanderbilt											
vs. South Carolina											
vs. Alabama											
at Arkansas											
vs. Auburn											
vs. LSU											
at Missouri											
at Mississippi St.											
vs. Arkansas											
at South Carolina											
at Ole Miss											
vs. Mississippi St.											

\* Started game

### Extras

	17-18	Career
Scored 10+ Points	2	30
Scored 15+ Points	2	13
Scored 20+ Points	1	4
Double-Doubles	1	3
Made 3+ 3FG	-	-
Double-figure Rebounds	1	3
5+ Assists	-	13
3+ Steals	1	22
Led UK in Scoring	2	10
Led UK in Rebounds	1	4
Led UK in Assists	2	21
Led UK in Steals	2	35

### Taylor Murray's Career Stats

Year	GP-GS	MIN	FG-FGA	PCT	3FG-FGA	PCT	FT-FTA	PCT	OFF-DEF	TOT-AVG	PF-FO	A	TO	BLK	ST	PTS-AVG
2015-16	33-0	757-22.9	81-185	.538	14-52	.269	50-60	.833	20-68	88-2.7	72-0	73	52	1	56	226-6.8
2016-17	30-30	1027-34.2	127-275	.462	11-51	.216	101-120	.842	43-104	147-4.9	57-0	118	48	1	61	366-12.2
2017-18	3-3	86-28.7	16-35	.457	3-12	.250	13-13	1.000	3-18	21-7.0	7-0	9	2	1	5	48-16.0
TOTAL	66-33	1870-28.3	224-495	.453	28-115	.243	164-193	.850	66-190	256-3.9	136-0	200	102	3	122	640-9.7



# KENTUCKY WBB 2017-18 PLAYER BIOS

32

JAIDA ROPER • 5-6 • GUARD • SOPHOMORE

MEMPHIS, TENN. (HOUSTON HS)



### 2017-18 (Sophomore)

- Has been UK's first substitution in all three games yet this season.
- Has scored a career high in all three contests this season.
- Added 14 points on 5-of-10 shooting against Montana on Nov. 16.
- Also recorded a career-high five rebounds at Montana.
- Played a career-high 26 minutes in the win over Montana.
- Went 5-of-5 from the floor in the win over GWU.
- Tied a career high by playing 25 minutes vs. Gardner-Webb.

### 2017-18 Season Highs

POINTS:	14 at Montana, 11/16/17
FGM:	5, twice, last at Montana, 11/16/17
FGA:	10 at Montana, 11/16/17
FTM:	3 at Montana, 11/16/17
FTA:	3 at Montana, 11/16/17
3FGM:	1, twice, last at Montana, 11/16/17
3FGA:	5 at Montana, 11/16/17
O-REBOUNDS:	2 vs. Sacramento St., 11/10/17
D-REBOUNDS:	4 at Montana, 11/16/17
TOTAL REBOUNDS:	5 at Montana, 11/16/17
ASSISTS:	3, twice, last at Montana, 11/16/17
BLOCKS:	1 vs. Sacramento St., 11/10/17
STEALS:	1 at Montana, 11/16/17
MINUTES:	26 at Montana, 11/16/17

### Career Highs

POINTS:	14 at Montana, 11/16/17
FGM:	5, twice, last at Montana, 11/16/17
FGA:	10 at Montana, 11/16/17
FTM:	3, twice, last at Montana, 11/16/17
FTA:	4 vs. Morehead State, 11/23/16
3FGM:	2, twice, last at Arkansas, 02/16/17
3FGA:	5 at Montana, 11/16/17
O-REBOUNDS:	3 at LSU, 01/19/17
D-REBOUNDS:	4 at Montana, 11/16/17
TOTAL REBOUNDS:	5 at Montana, 11/16/17
ASSISTS:	6 vs. New Hampshire, 11/17/16
BLOCKS:	1, twice, last vs. Sacramento St., 11/10/17
STEALS:	2, twice, last vs. Vanderbilt, 02/05/17
MINUTES:	26 at Montana, 11/16/17

### Roper's 2017-18 Game-by-Game Statistics

Opponent	Min	FG-A	3PT-A	FT-A	O-D-T	PF	A	TO	BS	ST	PTS
vs. Sacramento St.	21	3-6	1-2	2-2	2-0-2	2	3	1	1	0	9
vs. Gardner-Webb	25	5-5	0-0	0-0	0-1-1	3	2	0	0	0	10
at Montana	26	5-10	1-5	3-3	1-4-5	1	3	3	0	1	14
at Washington St.											
vs. Morehead St.											
vs. Marshall											
at Baylor											
vs. Tennessee Tech											
vs. Evansville											
at FGCU											
at Miami (Fla.)											
vs. Louisville											
vs. California											
at Middle Tennessee											
vs. Tennessee											
at TAMU											
vs Georgia											
at Florida											
at Vanderbilt											
vs. South Carolina											
vs. Alabama											
at Arkansas											
vs. Auburn											
vs. LSU											
at Missouri											
at Mississippi St.											
vs. Arkansas											
at South Carolina											
at Ole Miss											
vs. Mississippi St.											

\* Started game

### Extras

	17-18	Career
Scored 10+ Points	2	2
Scored 15+ Points	-	-
Scored 20+ Points	-	-
Made 3+ 3FG	-	-
Double-figure Rebounds	-	-
Double-doubles	-	-
3+ Assists	2	7
2+ Steals	-	2
Led UK in Scoring	-	-
Led UK in Rebounds	-	-
Led UK in Assists	2	5
Led UK in Steals	-	1
Led UK in Blocks	1	2

### Jaide Roper's Career Stats

Year	GP-GS	MIN	FG-FGA	PCT	3FG-FGA	PCT	FT-FTA	PCT	OFF-DEF	TOT-AVG	PF-FO	A	TO	BLK	ST	PTS-AVG
2016-17	32-2	385-12.0	28-88	.318	10-32	.313	17-21	.810	11-18	29-0.9	35-0	39	29	1	12	83-2.6
2017-18	3-0	72-24.0	13-21	.619	2-7	.286	5-5	1.000	3-5	8-2.7	6-0	8	4	1	1	33-11.0
TOTAL	35-2	457-13.1	41-109	.376	12-39	.308	22-26	.846	14-23	37-1.1	41-0	47	33	2	13	116-3.3

# KENTUCKY WBB 2017-18 PLAYER BIOS

45

ALYSSA RICE • 6-3 • CENTER • SENIOR

REYNOLDSBURG, OHIO (REYNOLDSBURG HS)



### 2017-18 (Senior)

- Tied a career high nine rebounds at Montana.
- Matched a career high with 11 points vs. Gardner-Webb to lead UK in scoring.
- Led UK in scoring for the first time in her career against GWU.
- Also tied a career high seven defensive rebounds vs. GWU.
- Added four points and seven rebounds in 17 minutes of play in Kentucky's season opener.
- Named one of 20 centers nationally to the Lisa Leslie Award Watch List.

### 2017-18 Season Highs

POINTS:	11 vs. Gardner-Webb, 11/12/17
FGM:	5 vs. Gardner-Webb, 11/12/17
FGA:	8 at Montana, 11/16/17
FTM:	1 vs. Gardner-Webb, 11/12/17
FTA:	2 vs. Gardner-Webb, 11/12/17
3FGM:	-
3FGA:	-
O-REBOUNDS:	3, twice, last at Montana, 11/16/17
D-REBOUNDS:	7 vs. Gardner-Webb, 11/12/17
TOTAL REBOUNDS:	9 at Montana, 11/16/17
ASSISTS:	1 vs. Gardner-Webb, 11/12/17
BLOCKS:	2 vs. Gardner-Webb, 11/12/17
STEALS:	-
MINUTES:	23 at Montana, 11/16/17

### Career Highs

POINTS:	11, twice, last vs. Gardner-Webb, 11/12/17
FGM:	5, twice, last vs. Gardner-Webb, 11/12/17
FGA:	10 vs. Radford, 12/18/16
FTM:	4, twice, last vs. South Carolina, 02/02/17
FTA:	8 vs. Albany, 11/12/16
3FGM:	-
3FGA:	-
O-REBOUNDS:	5 vs. Radford, 12/18/16
D-REBOUNDS:	7, 4x, last vs. Gardner-Webb, 11/12/17
TOTAL REBOUNDS:	9, 3x, last at Montana, 11/16/17
ASSISTS:	3 vs. Radford, 12/18/16
BLOCKS:	3, twice, last vs. Ole Miss, 01/26/17
STEALS:	2, 3x, last vs. Georgia, 01/15/17
MINUTES:	32 at Tennessee, 01/01/17

### Rice's 2017-18 Game-by-Game Statistics

Opponent	Min	FG-A	3PT-A	FT-A	O-D-T	PF	A	TO	BS	ST	PTS
vs. Sacramento St.	17*	2-6	0-0	0-0	3-4-7	2	0	0	1	0	4
vs. Gardner-Webb	22*	5-7	0-0	1-2	1-7-8	2	1	1	2	0	11
at Montana	23*	4-8	0-0	0-1	3-6-9	3	0	0	1	0	8
at Washington St.											
vs. Morehead St.											
vs. Marshall											
at Baylor											
vs. Tennessee Tech											
vs. Evansville											
at FGCU											
at Miami (Fla.)											
vs. Louisville											
vs. California											
at Middle Tennessee											
vs. Tennessee											
at TAMU											
vs Georgia											
at Florida											
at Vanderbilt											
vs. South Carolina											
vs. Alabama											
at Arkansas											
vs. Auburn											
vs. LSU											
at Missouri											
at Mississippi St.											
vs. Arkansas											
at South Carolina											
at Ole Miss											
vs. Mississippi St.											

\* Started game

### Extras

	17-18	Career
Scored 10+ Points	1	4
Scored 15+ Points	-	-
Scored 20+ Points	-	-
Made 3+ 3FG	-	-
Double-figure Rebounds	-	-
Double-doubles	-	-
3+ Assists	-	1
2+ Steals	-	1
Led UK in Scoring	1	1
Led UK in Rebounds	-	2
Led UK in Assists	-	-
Led UK in Steals	-	11
Led UK in Blocks	2	15

### Alyssa Rice's Career Stats

Year	GP-GS	MIN	FG-FGA	PCT	3FG-FGA	PCT	FT-FTA	PCT	OFF-DEF	TOT-AVG	PF-FO	A	TO	BLK	ST	PTS-AVG
2014-15	34-11	484-14.2	32-89	.360	0-0	.000	36-57	.632	37-54	91-2.7	98-3	7	37	24	9	100-2.9
2015-16	26-2	246-9.5	22-50	.440	0-0	.000	18-32	.563	27-34	61-2.3	54-1	6	23	11	3	62-2.4
2016-17	33-30	718-21.8	55-134	.410	0-0	.000	28-52	.538	58-90	148-4.5	95-5	24	39	22	11	138-4.2
2017-18	3-3	62-20.7	11-21	.524	0-0	.000	1-3	.333	7-17	24-8.0	7-0	1	1	4	0	23-7.7
TOTAL	96-46	1510-15.7	120-294	.408	0-0	.000	83-144	.576	129-195	324-3.4	254-9	38	100	61	23	323-3.4





Kentucky Women's Basketball  
Kentucky Combined Team Statistics (as of Nov 16, 2017)  
All games



RECORD:	OVERALL	HOME	AWAY	NEUTRAL
ALL GAMES	3-0	2-0	1-0	0-0
CONFERENCE	0-0	0-0	0-0	0-0
NON-CONFERENCE	3-0	2-0	1-0	0-0

#	Player	gp-gs	min	avg	Total		3-Point		F-Throw		Rebounds				pf	dq	a	to	blk	stl	pts	avg
					fg-fga	fg%	3fg-fga	3fg%	ft-fa	ft%	off	def	tot	avg								
24	Murray, Taylor	3-3	86	28.7	16-35	.457	3-12	.250	13-13	1.000	3	18	21	7.0	7	0	9	2	1	5	48	16.0
14	Wyatt, Tatyana	1-0	15	15.0	5-6	.833	1-2	.500	2-3	.667	0	2	2	2.0	2	0	0	1	0	1	13	13.0
04	Morris, Maci	3-3	79	26.3	13-29	.448	5-14	.357	7-7	1.000	2	14	16	5.3	9	0	8	5	4	2	38	12.7
22	Cann, Makenzie	3-3	76	25.3	12-21	.571	8-15	.533	1-1	1.000	7	6	13	4.3	6	0	3	4	1	3	33	11.0
32	Roper, Jaida	3-0	72	24.0	13-21	.619	2-7	.286	5-5	1.000	3	5	8	2.7	6	0	8	4	1	1	33	11.0
20	Harrison, Dorie	3-3	67	22.3	10-31	.323	0-0	.000	4-9	.444	9	13	22	7.3	4	0	4	4	1	0	24	8.0
45	Rice, Alyssa	3-3	62	20.7	11-21	.524	0-0	.000	1-3	.333	7	17	24	8.0	7	0	1	1	4	0	23	7.7
23	Roach, Kameron	3-0	29	9.7	3-7	.429	0-0	.000	4-4	1.000	1	3	4	1.3	2	0	3	4	1	1	10	3.3
03	McKinney, KeKe	3-0	45	15.0	4-16	.250	1-7	.143	1-2	.500	6	5	11	3.7	6	0	1	2	0	3	10	3.3
12	Paschal, Amanda	3-0	40	13.3	3-8	.375	0-3	.000	3-4	.750	1	5	6	2.0	2	0	5	1	0	0	9	3.0
15	Hardin, Jessica	3-0	20	6.7	1-4	.250	1-3	.333	0-0	.000	0	1	1	0.3	1	0	2	1	0	0	3	1.0
02	Poffenberger, Paige	1-0	4	4.0	0-2	.000	0-1	.000	0-0	.000	0	0	0	0.0	1	0	1	0	0	0	0	0.0
00	Haisel, LaShae	2-0	5	2.5	0-0	.000	0-0	.000	0-0	.000	0	1	1	0.5	0	0	1	0	0	0	0	0.0
Team											4	3	7									
Total.....		3	600		91-201	.453	21-64	.328	41-51	.804	43	93	136	45.3	53	0	46	29	13	16	244	81.3
Opponents.....		3	600		56-183	.306	12-59	.203	34-51	.667	36	70	106	35.3	51	-	34	42	12	14	158	52.7

TEAM STATISTICS	UK	OPP	Date	Opponent	Score	Att.
SCORING	244	158	11/10/17	SACRAMENTO STATE	w 101-70	4313
Points per game	81.3	52.7	11/12/17	GARDNER-WEBB	w 72-34	4256
Scoring margin	+28.7	-	11/16/17	at Montana	w 71-54	2808
FIELD GOALS-ATT	91-201	56-183	* - Conference game			
Field goal pct	.453	.306				
3 POINT FG-ATT	21-64	12-59				
3-point FG pct	.328	.203				
3-pt FG made per game	7.0	4.0				
FREE THROWS-ATT	41-51	34-51				
Free throw pct	.804	.667				
F-Throws made per game	13.7	11.3				
REBOUNDS	136	106				
Rebounds per game	45.3	35.3				
Rebounding margin	+10.0	-				
ASSISTS	46	34				
Assists per game	15.3	11.3				
TURNOVERS	29	42				
Turnovers per game	9.7	14.0				
Turnover margin	+4.3	-				
Assist/turnover ratio	1.6	0.8				
STEALS	16	14				
Steals per game	5.3	4.7				
BLOCKS	13	12				
Blocks per game	4.3	4.0				
ATTENDANCE	8569	2808				
Home games-Avg/Game	2-4284	1-2808				
Neutral site-Avg/Game	-	0-0				

Score by Periods	1st	2nd	3rd	4th	Totals
Kentucky	68	50	58	68	244
Opponents	49	36	37	36	158





Kentucky Women's Basketball  
 Kentucky Season Schedule/Results & Leaders (as of Nov 16, 2017)  
 All games



RECORD:	OVERALL	HOME	AWAY	NEUTRAL
ALL GAMES	3-0	2-0	1-0	0-0
CONFERENCE	0-0	0-0	0-0	0-0
NON-CONFERENCE	3-0	2-0	1-0	0-0

Date	Opponent	Score	Att.	High Points	High Rebounds
11/10/17	SACRAMENTO STATE	w 101-70	4313	(22)Murray, Taylor	(9)Harrison, Dorie
11/12/17	GARDNER-WEBB	w 72-34	4256	(11)Rice, Alyssa	(10)Morris, Maci
11/16/17	at Montana	w 71-54	2808	(18)Murray, Taylor	(12)Murray, Taylor

\* - Conference game

Attendance Summary	Games	Attend	Avg/Game
Home	2	8569	4284
Away	1	2808	2808
Neutral	0	0	0
Total	3	11377	3792



Kentucky Women's Basketball  
 Kentucky Game-by-Game Highs (as of Nov 16, 2017)  
 All games



Opponent	Date	Score	Points	Rebounds	Assists	Steals	Blocked shots
SACRAMENTO STATE	11/10/17	101-70	22-Murray, Taylor	9-Harrison, Dorie	3-Murray, Taylor Roper, Jaida Harrison, Dorie Roach, Kameron	2-McKinney, KeKe	1-Murray, Taylor Rice, Alyssa Roper, Jaida Harrison, Dorie Roach, Kameron
GARDNER-WEBB	11/12/17	72-34	11-Rice, Alyssa	10-Morris, Maci	4-Morris, Maci	1-Cann, Makenzie Murray, Taylor Morris, Maci	3-Morris, Maci
at Montana	11/16/17	71-54	18-Murray, Taylor	12-Murray, Taylor	3-Murray, Taylor Roper, Jaida	3-Murray, Taylor	1-Morris, Maci Rice, Alyssa



Kentucky Women's Basketball  
 Kentucky Team Game-by-Game (as of Nov 16, 2017)  
 All games



TEAM STATISTICS

Opponent	Date	Score		Total		3-Pointers		Free throws		Rebounds				pf	a	t/o	blk	stl	pts	avg
				fg-fga	pct	3fg-fga	pct	ft-fta	pct	off	def	tot	avg							
SACRAMENTO STATE	11/10/17	101-70	w	35-70	.500	9-20	.450	22-28	.786	14	28	42	42.0	16	18	11	5	6	101	101.0
GARDNER-WEBB	11/12/17	72-34	w	31-73	.425	4-18	.222	6-8	.750	17	36	53	47.5	14	14	7	6	3	72	86.5
at Montana	11/16/17	71-54	w	25-58	.431	8-26	.308	13-15	.867	12	29	41	45.3	23	14	11	2	7	71	81.3
Kentucky		244		91-201	.453	21-64	.328	41-51	.804	43	93	136	45.3	53	46	29	13	16	244	81.3
Opponents		158		56-183	.306	12-59	.203	34-51	.667	36	70	106	35.3	51	34	42	12	14	158	52.7

Games played: 3  
 Points/game: 81.3  
 FG Pct: 45.3  
 3FG Pct: 32.8  
 FT Pct: 80.4

Rebounds/game: 45.3  
 Assists/game: 15.3  
 Turnovers/game: 9.7  
 Assist/turnover ratio: 1.6  
 Steals/game: 5.3  
 Blocks/game: 4.3



Kentucky Women's Basketball  
 Kentucky Team High/Low Analysis (as of Nov 16, 2017)  
 All games



Kentucky - TEAM GAME HIGHS

POINTS	101	SACRAMENTO STATE (11/10/17)
	72	GARDNER-WEBB (11/12/17)
	71	at Montana (11/16/17)
FIELD GOALS MADE	35	SACRAMENTO STATE (11/10/17)
	31	GARDNER-WEBB (11/12/17)
FIELD GOAL ATTEMPTS	73	GARDNER-WEBB (11/12/17)
	70	SACRAMENTO STATE (11/10/17)
FIELD GOAL PERCENTAGE	.500 (35-70)	SACRAMENTO STATE (11/10/17)
	.431 (25-58)	at Montana (11/16/17)
3 PT FIELD GOALS MADE	9	SACRAMENTO STATE (11/10/17)
	8	at Montana (11/16/17)
3 PT FG ATTEMPTS	26	at Montana (11/16/17)
	20	SACRAMENTO STATE (11/10/17)
3 PT FG PERCENTAGE	.450 (9-20)	SACRAMENTO STATE (11/10/17)
	.308 (8-26)	at Montana (11/16/17)
FREE THROWS MADE	22	SACRAMENTO STATE (11/10/17)
	13	at Montana (11/16/17)
FREE THROW ATTEMPTS	28	SACRAMENTO STATE (11/10/17)
	15	at Montana (11/16/17)
FREE THROW PERCENTAGE	.867 (13-15)	at Montana (11/16/17)
	.786 (22-28)	SACRAMENTO STATE (11/10/17)
REBOUNDS	53	GARDNER-WEBB (11/12/17)
	42	SACRAMENTO STATE (11/10/17)
ASSISTS	18	SACRAMENTO STATE (11/10/17)
	14	at Montana (11/16/17)
	14	GARDNER-WEBB (11/12/17)
STEALS	7	at Montana (11/16/17)
	6	SACRAMENTO STATE (11/10/17)
BLOCKED SHOTS	6	GARDNER-WEBB (11/12/17)
	5	SACRAMENTO STATE (11/10/17)
TURNOVERS	11	at Montana (11/16/17)
	11	SACRAMENTO STATE (11/10/17)
FOULS	23	at Montana (11/16/17)
	16	SACRAMENTO STATE (11/10/17)





Kentucky Women's Basketball  
 Kentucky High/Low Analysis (as of Nov 16, 2017)  
 All games



Opponent - GAME HIGHS

POINTS	70	SACRAMENTO STATE (11/10/17)
	54	at Montana (11/16/17)
	34	GARDNER-WEBB (11/12/17)
FIELD GOALS MADE	26	SACRAMENTO STATE (11/10/17)
	16	at Montana (11/16/17)
FIELD GOAL ATTEMPTS	72	SACRAMENTO STATE (11/10/17)
	56	at Montana (11/16/17)
FIELD GOAL PERCENTAGE	.361 (26-72)	SACRAMENTO STATE (11/10/17)
	.286 (16-56)	at Montana (11/16/17)
3 PT FIELD GOALS MADE	5	SACRAMENTO STATE (11/10/17)
	4	at Montana (11/16/17)
3 PT FG ATTEMPTS	25	SACRAMENTO STATE (11/10/17)
	19	at Montana (11/16/17)
3 PT FG PERCENTAGE	.211 (4-19)	at Montana (11/16/17)
	.200 (5-25)	SACRAMENTO STATE (11/10/17)
	.200 (3-15)	GARDNER-WEBB (11/12/17)
FREE THROWS MADE	18	at Montana (11/16/17)
	13	SACRAMENTO STATE (11/10/17)
FREE THROW ATTEMPTS	25	at Montana (11/16/17)
	18	SACRAMENTO STATE (11/10/17)
FREE THROW PERCENTAGE	.722 (13-18)	SACRAMENTO STATE (11/10/17)
	.720 (18-25)	at Montana (11/16/17)
REBOUNDS	42	SACRAMENTO STATE (11/10/17)
	36	at Montana (11/16/17)
ASSISTS	15	SACRAMENTO STATE (11/10/17)
	12	at Montana (11/16/17)
STEALS	8	SACRAMENTO STATE (11/10/17)
	4	at Montana (11/16/17)
BLOCKED SHOTS	5	GARDNER-WEBB (11/12/17)
	4	SACRAMENTO STATE (11/10/17)
TURNOVERS	16	GARDNER-WEBB (11/12/17)
	16	SACRAMENTO STATE (11/10/17)
FOULS	25	SACRAMENTO STATE (11/10/17)
	13	at Montana (11/16/17)
	13	GARDNER-WEBB (11/12/17)



Kentucky Women's Basketball  
 Kentucky High/Low Analysis (as of Nov 16, 2017)  
 All games



Kentucky - GAME LOWS

POINTS	71		at Montana (11/16/17)
	72		GARDNER-WEBB (11/12/17)
	101		SACRAMENTO STATE (11/10/17)
FIELD GOALS MADE	25		at Montana (11/16/17)
	31		GARDNER-WEBB (11/12/17)
FIELD GOAL ATTEMPTS	58		at Montana (11/16/17)
	70		SACRAMENTO STATE (11/10/17)
FIELD GOAL PERCENTAGE	.425	(31-73)	GARDNER-WEBB (11/12/17)
	.431	(25-58)	at Montana (11/16/17)
3 PT FIELD GOALS MADE	4		GARDNER-WEBB (11/12/17)
	8		at Montana (11/16/17)
3 PT FG ATTEMPTS	18		GARDNER-WEBB (11/12/17)
	20		SACRAMENTO STATE (11/10/17)
3 PT FG PERCENTAGE	.222	(4-18)	GARDNER-WEBB (11/12/17)
	.308	(8-26)	at Montana (11/16/17)
FREE THROWS MADE	6		GARDNER-WEBB (11/12/17)
	13		at Montana (11/16/17)
FREE THROW ATTEMPTS	8		GARDNER-WEBB (11/12/17)
	15		at Montana (11/16/17)
FREE THROW PERCENTAGE	.750	(6-8)	GARDNER-WEBB (11/12/17)
	.786	(22-28)	SACRAMENTO STATE (11/10/17)
REBOUNDS	41		at Montana (11/16/17)
	42		SACRAMENTO STATE (11/10/17)
ASSISTS	14		GARDNER-WEBB (11/12/17)
	14		at Montana (11/16/17)
STEALS	3		GARDNER-WEBB (11/12/17)
	6		SACRAMENTO STATE (11/10/17)
BLOCKED SHOTS	2		at Montana (11/16/17)
	5		SACRAMENTO STATE (11/10/17)
TURNOVERS	7		GARDNER-WEBB (11/12/17)
	11		SACRAMENTO STATE (11/10/17)
	11		at Montana (11/16/17)
FOULS	14		GARDNER-WEBB (11/12/17)
	16		SACRAMENTO STATE (11/10/17)



Kentucky Women's Basketball  
 Kentucky High/Low Analysis (as of Nov 16, 2017)  
 All games



Opponent - GAME LOWS

POINTS	34		GARDNER-WEBB (11/12/17)
	54		at Montana (11/16/17)
	70		SACRAMENTO STATE (11/10/17)
FIELD GOALS MADE	14		GARDNER-WEBB (11/12/17)
	16		at Montana (11/16/17)
FIELD GOAL ATTEMPTS	55		GARDNER-WEBB (11/12/17)
	56		at Montana (11/16/17)
FIELD GOAL PERCENTAGE	.255	(14-55)	GARDNER-WEBB (11/12/17)
	.286	(16-56)	at Montana (11/16/17)
3 PT FIELD GOALS MADE	3		GARDNER-WEBB (11/12/17)
	4		at Montana (11/16/17)
3 PT FG ATTEMPTS	15		GARDNER-WEBB (11/12/17)
	19		at Montana (11/16/17)
3 PT FG PERCENTAGE	.200	(3-15)	GARDNER-WEBB (11/12/17)
	.200	(5-25)	SACRAMENTO STATE (11/10/17)
FREE THROWS MADE	3		GARDNER-WEBB (11/12/17)
	13		SACRAMENTO STATE (11/10/17)
FREE THROW ATTEMPTS	8		GARDNER-WEBB (11/12/17)
	18		SACRAMENTO STATE (11/10/17)
FREE THROW PERCENTAGE	.375	(3-8)	GARDNER-WEBB (11/12/17)
	.720	(18-25)	at Montana (11/16/17)
REBOUNDS	28		GARDNER-WEBB (11/12/17)
	36		at Montana (11/16/17)
ASSISTS	7		GARDNER-WEBB (11/12/17)
	12		at Montana (11/16/17)
STEALS	2		GARDNER-WEBB (11/12/17)
	4		at Montana (11/16/17)
BLOCKED SHOTS	3		at Montana (11/16/17)
	4		SACRAMENTO STATE (11/10/17)
TURNOVERS	10		at Montana (11/16/17)
	16		SACRAMENTO STATE (11/10/17)
	16		GARDNER-WEBB (11/12/17)
FOULS	13		GARDNER-WEBB (11/12/17)
	13		at Montana (11/16/17)



Kentucky Women's Basketball  
 Kentucky Player High/Low Analysis (as of Nov 16, 2017)  
 All games



Kentucky - INDIVIDUAL GAME HIGHS

Points	22		Murray, Taylor vs Sacramento State (11/10/17)
	18		Murray, Taylor at Montana (11/16/17)
	17		Cann, Makenzie vs Sacramento State (11/10/17)
	16		Morris, Maci at Montana (11/16/17)
	14		Roper, Jaida at Montana (11/16/17)
Field Goals Made	8		Murray, Taylor vs Sacramento State (11/10/17)
	6		Cann, Makenzie vs Sacramento State (11/10/17)
Field Goal Att.	13		Morris, Maci vs Gardner-Webb (11/12/17)
	12		Harrison, Dorie vs Gardner-Webb (11/12/17)
	12		Murray, Taylor vs Gardner-Webb (11/12/17)
	12		Murray, Taylor vs Sacramento State (11/10/17)
FG Pct (min 5 made)	1.000	(5-5)	Roper, Jaida vs Gardner-Webb (11/12/17)
	.833	(5-6)	Wyatt, Tatyana vs Sacramento State (11/10/17)
3-Point FG Made	4		Cann, Makenzie vs Sacramento State (11/10/17)
	3		Morris, Maci at Montana (11/16/17)
3-Point FG Att.	6		Morris, Maci at Montana (11/16/17)
	6		Murray, Taylor at Montana (11/16/17)
	6		Cann, Makenzie vs Sacramento State (11/10/17)
3-Pt FG Pct (min 2 made)	.667	(4-6)	Cann, Makenzie vs Sacramento State (11/10/17)
	.667	(2-3)	Morris, Maci vs Sacramento State (11/10/17)
Free Throws Made	6		Murray, Taylor at Montana (11/16/17)
	5		Murray, Taylor vs Sacramento State (11/10/17)
Free Throw Att.	6		Murray, Taylor at Montana (11/16/17)
	5		Murray, Taylor vs Sacramento State (11/10/17)
	5		Harrison, Dorie vs Sacramento State (11/10/17)
FT Pct (min 3 made)	1.000	(6-6)	Murray, Taylor at Montana (11/16/17)
	1.000	(5-5)	Murray, Taylor vs Sacramento State (11/10/17)
	1.000	(4-4)	Roach, Kameron vs Sacramento State (11/10/17)
	1.000	(3-3)	Morris, Maci at Montana (11/16/17)
	1.000	(3-3)	Roper, Jaida at Montana (11/16/17)
Rebounds	12		Murray, Taylor at Montana (11/16/17)
	10		Morris, Maci vs Gardner-Webb (11/12/17)
Assists	4		Morris, Maci vs Gardner-Webb (11/12/17)
	3		Roper, Jaida at Montana (11/16/17)
	3		Murray, Taylor at Montana (11/16/17)
	3		Murray, Taylor vs Gardner-Webb (11/12/17)
	3		Harrison, Dorie vs Sacramento State (11/10/17)
	3		Roach, Kameron vs Sacramento State (11/10/17)
	3		Murray, Taylor vs Sacramento State (11/10/17)
	3		Roper, Jaida vs Sacramento State (11/10/17)
Steals	3		Murray, Taylor at Montana (11/16/17)
	2		Cann, Makenzie at Montana (11/16/17)
	2		McKinney, KeKe vs Sacramento State (11/10/17)
Blocked Shots	3		Morris, Maci vs Gardner-Webb (11/12/17)
	2		Rice, Alyssa vs Gardner-Webb (11/12/17)
Turnovers	3		Roper, Jaida at Montana (11/16/17)
	2		Harrison, Dorie at Montana (11/16/17)
	2		Morris, Maci at Montana (11/16/17)
	2		Murray, Taylor at Montana (11/16/17)
	2		Roach, Kameron vs Gardner-Webb (11/12/17)
	2		Morris, Maci vs Gardner-Webb (11/12/17)
	2		Cann, Makenzie vs Sacramento State (11/10/17)
	2		Roach, Kameron vs Sacramento State (11/10/17)



	2	Harrison, Dorie vs Sacramento State (11/10/17)
Fouls	4	McKinney, KeKe at Montana (11/16/17)
	4	Murray, Taylor at Montana (11/16/17)
	4	Cann, Makenzie at Montana (11/16/17)
	4	Morris, Maci at Montana (11/16/17)
Minutes	32	Murray, Taylor at Montana (11/16/17)
	32	Morris, Maci vs Gardner-Webb (11/12/17)
	31	Morris, Maci at Montana (11/16/17)
	29	Murray, Taylor vs Sacramento State (11/10/17)
	29	Cann, Makenzie vs Sacramento State (11/10/17)



Kentucky Women's Basketball  
Kentucky Opponent High/Low Analysis (as of Nov 16, 2017)  
All games



OPPONENT INDIVIDUAL GAME HIGHS

Points	21		Huntsman, Tierra vs Gardner-Webb (11/12/17)
	19		Friend, Hannah vs Sacramento State (11/10/17)
Field Goals Made	13		Johnson, Maranne vs Sacramento State (11/10/17)
	12		JOHNSTON, McKenzie at Montana (11/16/17)
Field Goal Att.	12		Doughty, Kyhonta vs Sacramento State (11/10/17)
	9		Huntsman, Tierra vs Gardner-Webb (11/12/17)
	6		Johnson, Maranne vs Sacramento State (11/10/17)
	6		Doughty, Kyhonta vs Sacramento State (11/10/17)
Field Goal Pct (min 5 made)	6		Friend, Hannah vs Sacramento State (11/10/17)
	19		Huntsman, Tierra vs Gardner-Webb (11/12/17)
3-Point FG Made	19		Johnson, Maranne vs Sacramento State (11/10/17)
	.667	(6-9)	Doughty, Kyhonta vs Sacramento State (11/10/17)
3-Point FG Att.	.625	(5-8)	HENDERSON, Jace at Montana (11/16/17)
	3		Huntsman, Tierra vs Gardner-Webb (11/12/17)
3-Pt FG Pct (min 2 made)	3		Friend, Hannah vs Sacramento State (11/10/17)
	3		STOCKHOLM, Emma at Montana (11/16/17)
	6		Huntsman, Tierra vs Gardner-Webb (11/12/17)
	6		Friend, Hannah vs Sacramento State (11/10/17)
Free Throws Made	6		Johnson, Maranne vs Sacramento State (11/10/17)
	.500	(3-6)	Huntsman, Tierra vs Gardner-Webb (11/12/17)
Free Throw Att.	.500	(3-6)	Friend, Hannah vs Sacramento State (11/10/17)
	6		SCHOENING, Madi at Montana (11/16/17)
FT Pct (min 3 made)	6		Degraffenreid, Dana vs Sacramento State (11/10/17)
	9		Degraffenreid, Dana vs Sacramento State (11/10/17)
	6		SCHOENING, Madi at Montana (11/16/17)
Rebounds	1.000	(6-6)	SCHOENING, Madi at Montana (11/16/17)
	.800	(4-5)	JOHNSTON, McKenzie at Montana (11/16/17)
	.800	(4-5)	Friend, Hannah vs Sacramento State (11/10/17)
Assists	9		Johnson, Maranne vs Sacramento State (11/10/17)
	8		ISAAK, Mekayla at Montana (11/16/17)
	8		HENDERSON, Jace at Montana (11/16/17)
Steals	5		JOHNSTON, McKenzie at Montana (11/16/17)
	5		Dawson, Justyce vs Sacramento State (11/10/17)
Blocked Shots	2		Tibbs, Celia vs Gardner-Webb (11/12/17)
	2		Degraffenreid, Dana vs Sacramento State (11/10/17)
	3		Tibbs, Celia vs Gardner-Webb (11/12/17)
	1		STOCKHOLM, Emma at Montana (11/16/17)
	1		KLICK, Nora at Montana (11/16/17)
	1		ISAAK, Mekayla at Montana (11/16/17)
	1		Hill, Alexis vs Gardner-Webb (11/12/17)
	1		Pointer, Morgan vs Gardner-Webb (11/12/17)
	1		Nicholas, Kennedy vs Sacramento State (11/10/17)
	1		Doughty, Kyhonta vs Sacramento State (11/10/17)
Turnovers	1		Johnson, Tiana vs Sacramento State (11/10/17)
	1		Degraffenreid, Dana vs Sacramento State (11/10/17)
Fouls	5		Stanford, Ky'Asia vs Gardner-Webb (11/12/17)
	4		JOHNSTON, McKenzie at Montana (11/16/17)
	4		Degraffenreid, Dana vs Sacramento State (11/10/17)
	5		Friend, Hannah vs Sacramento State (11/10/17)
Fouls	4		ISAAK, Mekayla at Montana (11/16/17)
	4		Nicholas, Kennedy vs Sacramento State (11/10/17)
	4		Johnson, Maranne vs Sacramento State (11/10/17)