

# KENTUCKY

## WOMEN'S BASKETBALL®



### #9/9 Kentucky Wildcats vs. Samford Bulldogs

Sunday, Dec. 13 - 2 p.m. ET  
Memorial Coliseum (1,200) - Lexington, Ky.

UK Athletics Communication and Public Relations · (859) 257-3838 · www.ukathletics.com  
Evan Crane (wesley.crane@uky.edu) and Cami Moore (camiran.moore@uky.edu)

**TV - SEC Network+**  
PBP: Jeff Picoro  
Analyst: Christi Thomas

**Radio - UK Sports Network**  
PBP: Darren Headrick  
630 AM WLAP (Lexington)  
SiriusXM SEC Radio Ch. 374

**Live Stats**  
kentucky.statbroadcast.com  
(home games only)

**Tickets (home games)**  
Ticketmaster.com  
Ticket quantities will be limited this season due to COVID-19 regulations.

**Follow the Cats**  
Twitter: @KentuckyWBB  
Instagram: @KentuckyWBB  
Facebook: /KentuckyWBB

#### 2020-21 KENTUCKY WBB SCHEDULE

##### November 2020

25	MURRAY STATE	SEC Network+	W, 86-60
29	BELMONT	SEC Network	W, 70-50

##### December 2020

3	at Kansas State^	Big 12 Now/ESPN+	W, 60-49
6	#13/15 INDIANA	ESPNU	W, 72-68
9	MARSHALL	SEC Network+	W, 79-45
13	SAMFORD	SEC Network+	2 p.m.
16	at DePaul	DePaul Live Stream	3 p.m.
19	WOFFORD	SEC Network+	1 p.m.
31	ARKANSAS*	SEC Network	8:30 p.m.

##### January 2021

3	at Tennessee*	ESPN2	1 p.m.
7	at Texas A&M*	SEC Network	8:30 p.m.
10	SOUTH CAROLINA*	ESPN2	Noon
14	at Auburn*	SEC Network	8:30 p.m.
17	VANDERBILT*	SEC Network	5 p.m.
24	at Mississippi State*	ESPN2	2 p.m.
28	ALABAMA*	SEC Network	6:30 p.m.
31	MISSOURI*	SEC Network	1 p.m.

##### February 2021

4	at Ole Miss*	SEC Network+	7 p.m.
11	TENNESSEE*	SEC Network+	7 p.m.
15	at Florida*	SEC Network	7 p.m.
18	LSU*	SEC Network+	7 p.m.
21	at South Carolina*	ESPN	3 p.m.
25	at Georgia*	SEC Network+	7 p.m.
28	OLE MISS*	SEC Network	Noon

##### March 2021

3-7	SEC Tournament (N1)	SEC Network	TBD
19-22	NCAA First & Second Rounds (N2)		TBD
26-29	NCAA Regionals (N3)		TBD

##### April 2021

2 & 4	NCAA Final Four (N4)		TBD
-------	----------------------	--	-----

\* denotes SEC game; ^ denotes SEC/Big 12 Challenge; All game times are EASTERN STANDARD TIME and subject to change due to TV selection; All home games are ALL CAPS and will be played at Memorial Coliseum unless noted otherwise; N1 – SEC Tournament – Greenville, S.C. (Bon Secours Wellness Arena); N2 – NCAA First & Second Rounds – TBD; N3 – NCAA Regionals – Albany, N.Y. (Times Union Center), Austin, Texas (H-E-B Center), Cincinnati, Ohio (Cintas Center), Spokane, Wash. (Spokane Veterans Memorial Arena); N4 – NCAA Final Four – San Antonio, Texas (Alamodome)



**Record:** 5-0, 0-0 SEC  
**Home:** 4-0 | **Away:** 1-0 | **Neutral:** 0-0  
**Ranking:** 9th (AP)/9th (Coaches)  
**Last Game:** W, 79-45 vs. Marshall (12/9)  
**Interim Head Coach:** Kyra Elzy  
**Alma Mater:** Tennessee, 1999/2001  
**Overall:** 5-0 (1.000) (1st season)  
**at UK:** 5-0 (1.000) (1st season)



**Record:** 1-4, 0-0 SoCon  
**Home:** 1-1 | **Away:** 0-3 | **Neutral:** 0-0  
**Ranking:** not ranked  
**Last Game:** W, 79-66 vs. N. Alabama (12/11)  
**Head Coach:** Carley Kuhns  
**Alma Mater:** Valdosta State, '08  
**Overall:** 85-47 (.643) (5th season)  
**at Samford:** 19-18 (.513) (2nd season)

#### QUICK NOTES

- Kentucky is in its 47th season with a 850-548 (.608) all-time record.
- The Wildcats have had great success in Memorial Coliseum, sitting at 465-159 (.745) overall in the historic building.
- UK has started the season 5-0 for the fourth straight season. This is the seventh time in Coach Elzy's nine seasons on the UK staff that the Wildcats have started at least 5-0. The strong start ties the second best in program history for first-year head coaches. Terry Hall started 9-0 in 1980-81, while Sharon Fanning started 5-0 in 1987-88.
- UK and Samford are meeting for the fourth time in program history on Sunday. UK leads the series 3-0. All have been in Lexington.
- The Wildcats are ranked No. 9 in the latest Associated Press Top 25, which marks the first time UK has entered the top-10 in the listing since 2015-16. This is the 90th week all-time that UK has been ranked inside the AP Top 10. UK's highest ranking is No. 4 in 82-83.
- Kentucky has won 27 straight non-conference home games inside Memorial Coliseum dating back to December of 2017 when it lost back-to-back to UofL and Cal. UK is 4-0 this season.
- Three Wildcats are averaging over 13 points this season, paced by Dre'una Edwards at 14.4 ppg with 9.2 rebounds per game. Rhyne Howard is averaging 14.3 ppg while Chasity Patterson is averaging 13.6 ppg with a team-high 15 steals and 14 assists.
- The Associated Press named Rhyne Howard a first-team preseason All-American by unanimous selection. She is the first player in program history to be a first-team AP Preseason All-American.
- In 46 years of women's basketball, Kentucky has 96 wins over ranked opponents and are scheduled to face nine ranked teams.
- Kyra Elzy became the eighth head coach in Kentucky women's basketball history on Thursday, Nov. 12 when UK AD Mitch Barnhart named her interim head coach following the abrupt retirement of Matthew Mitchell. The 2020-21 season is the ninth for Elzy in the Kentucky program with most of that time coming as the associate head coach. Elzy has recruited some of the best players to ever wear the Blue and White and helped guide the Wildcats to the SEC Championship in 2012 and two NCAA Elite Eights.

# 2020-21 KENTUCKY WBB ROSTER

## NUMERICAL

No.	Name	Pos.	Cl.	Ht.	Hometown/High School/Previous College
00	Olivia Owens	C	R-So.	6-4	Albany, N.Y./Niskayuna HS/Maryland
1	Robyn Benton	G	Jr.	5-9	Conyers, Ga./Greater Atlanta Christian/Auburn
3	KeKe McKinney	F	Sr.	6-1	Knoxville, Tenn./Fulton HS
5	Blair Green	G	Jr.	6-0	Harlan, Ky/Harlan County HS
10	Rhyne Howard	G	Jr.	6-2	Cleveland, Tenn./Bradley Central HS
12	Treasure Hunt	G	Fr.	6-1	Chattanooga, Tenn./Hamilton Heights Christian Academy
13%	Jazmine Massengill	G	Jr.	6-0	Chattanooga, Tenn./Hamilton Heights/Tennessee
14	Tatyana Wyatt	F	Sr.	6-2	Columbus, Ga./Columbus HS
15	Chasity Patterson	G	Sr.	5-5	Houston, Texas/North Shore/Texas
20	Erin Toller	G	Fr.	5-7	Louisville, Ky./Sacred Heart Academy
21	Nyah Leveretter	F	Fr.	6-3	Blythewood, S.C./Westwood HS
23	Kameron Roach	G	R-Jr.	5-6	Hopkins, S.C./Lower Richland HS
34	Emma King	G	Soph.	5-10	Stanford, Ky./Lincoln County HS
44	Dre'una Edwards	F	R-So.	6-2	Las Vegas, Nev./Liberty HS/Utah

## ALPHABETICAL

No.	Name	Pos.	Cl.	Ht.	Hometown/High School/Previous College
1	Robyn Benton	G	Jr.	5-9	Conyers, Ga./Greater Atlanta Christian/Auburn
44	Dre'una Edwards	F	R-So.	6-2	Las Vegas, Nev./Liberty HS/Utah
5	Blair Green	G	Jr.	6-0	Harlan, Ky/Harlan County HS
10	Rhyne Howard	G	Jr.	6-2	Cleveland, Tenn./Bradley Central HS
12	Treasure Hunt	G	Fr.	6-2	Chattanooga, Tenn./Hamilton Heights
34	Emma King	G	Soph.	5-10	Stanford, Ky./Lincoln County HS
21	Nyah Leveretter	F	Fr.	6-3	Blythewood, S.C./Westwood HS
13%	Jazmine Massengill	G	Jr.	6-0	Chattanooga, Tenn./Hamilton Heights/Tennessee
3	KeKe McKinney	F	Sr.	6-1	Knoxville, Tenn./Fulton HS
00	Olivia Owens	C	R-So.	6-4	Albany, N.Y./Niskayuna HS/Maryland
15	Chasity Patterson	G	Sr.	5-5	Houston, Texas/North Shore/Texas
23	Kameron Roach	G	R-Jr.	5-6	Hopkins, S.C./Lower Richland HS
20	Erin Toller	G	Fr.	5-7	Louisville, Ky./Sacred Heart Academy
14	Tatyana Wyatt	F	Sr.	6-2	Columbus, Ga./Columbus HS

% denotes player will sit out 2020-21 season due to NCAA transfer rules

### COACHING STAFF

**Interim Head Coach:** Kyra Elzy (Tennessee, 1999, 2001) – 1st season, 9th at Kentucky  
**Assistant Coach:** Niya Butts (Tennessee, 2000; Tennessee Tech, 2002) – 5th season, 10th at Kentucky  
**Assistant Coach:** Amber Smith (Kentucky, 2011) – 3rd season, 10th at Kentucky (player/support staff)  
**Interim Assistant Coach:** Daniel Boice (Arizona, 2014, 2016) – 1st season, 5th at Kentucky (support staff)

### SUPPORT STAFF

**Assistant Athletics Director/Women's Basketball:** Amy Tilley (Kentucky, 2007)  
**Special Assistant to the Head Coach:** Lin Dunn (UT Martin, 1969)  
**Academic Counselor/WBB Admin.:** Tiffany Hayden (Kentucky, 2001; Louisville, 2009)  
**Director of Recruiting:** Aisha Foy (Radford, 2016; Southeast Missouri State, 2018)  
**Recruiting Assistant:** Jackie Clark (Kentucky, 2015; Kentucky, 2017)  
**Coaching Video Coordinator:** DeNesha Stallworth (Kentucky, 2013)  
**Staff Support Associate:** Carrie Marshall (Kentucky, 2003)  
**Creative Director:** Kim Troxall (SCAD, 1994)  
**Senior Athletic Trainer:** Courtney Jones (Purdue, 2001)  
**Nutrition Coach:** Monica Fowler (Kentucky, 2010)  
**Team Physician:** Dr. Robert Hosey (Virginia Tech, 1989)  
**Strength & Conditioning Coach:** John Spurlock (Hanover College, 2005)  
**WBB Communications Director:** Evan Crane (Kentucky, 2010)  
**WBB Communications Assistant:** Cami Moore (Kentucky, 2018)  
**Equipment Manager:** Kortez Wilson (Kentucky, 2014)

## BY CLASS

### Seniors (3)

KeKe McKinney  
Chasity Patterson  
Tatyana Wyatt

### Juniors (5)

Robyn Benton  
Blair Green  
Rhyne Howard  
Jazmine Massengill  
Kameron Roach

### Sophomores (3)

Dre'una Edwards  
Olivia Owens  
Emma King

### Freshmen (3)

Treasure Hunt  
Nyah Leveretter  
Erin Toller

## BY HEIGHT

5-5	Chasity Patterson
5-6	Kameron Roach
5-7	Erin Toller
5-9	Robyn Benton
5-10	Emma King
6-0	Blair Green
	Jazmine Massengill
6-1	KeKe McKinney
6-2	Tatyana Wyatt
	Rhyne Howard
	Dre'una Edwards
	Treasure Hunt
6-3	Nyah Leveretter
6-4	Olivia Owens

## PRONUNCIATION

**Dre'una Edwards** (dre-ON-a)

**Nyah Leveretter** (ni(like high)-uh) (lev-er-RETT(Ike wet)-tur)

**Tatyana Wyatt** (TOT-e-on-uh)

**Rhyne Howard** (pronounced like RYAN)



# 2020-21 RADIO/TELEVISION CHART



**OLIVIA OWENS** **00**

6-4 – R-Soph. – TR – C  
Albany, N.Y.  
(Niskayuna HS/Maryland)



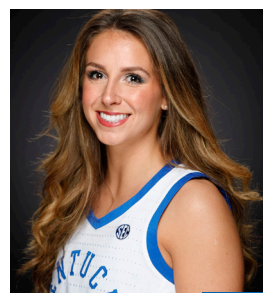
**ROBYN BENTON** **1**

5-9 – Jr. – TR – G  
Conyers, Ga.  
(Greater Atlanta Christian/Auburn)



**KEKE MCKINNEY** **3**

6-1 – Sr. – F  
Knoxville, Tenn.  
(Fulton HS)



**BLAIR GREEN** **5**

6-0 – Jr. – G  
Harlan County, Ky.  
(Harlan County HS)



**RHYNE HOWARD** **10**

6-2 – Jr. – G  
Cleveland, Tenn.  
(Bradley Central HS)



**TREASURE HUNT** **12**

6-2 – Fr. – G  
Chattanooga, Tenn.  
(Hamilton Heights Christian)



**JAZMINE MASSENGILL** **13**

6-0 – Jr. – G  
Chattanooga, Tenn.  
(Hamilton Heights Christian/Tenn.)



**TATYANA WYATT** **14**

6-2 – Sr. – F  
Columbus, Ga.  
(Columbus HS)



**CHASITY PATTERSON** **15**

5-5 – Sr. – G  
Houston, Texas  
(North Shore HS/Texas)



**ERIN TOLLER** **20**

5-7 – Fr. – G  
Louisville, Ky.  
(Sacred Heart HS)



**NYAH LEVERETTER** **21**

6-3 – Fr. – F  
Blythewood, S.C.  
(Westwood HS)



**KAMERON ROACH** **23**

5-6 – R-Jr. – G  
Hopkins, S.C.  
(Lower Richland HS)



**EMMA KING** **34**

5-10 – Soph. – G  
Stanford, Ky.  
(Lincoln County HS)



**DRE'UNA EDWARDS** **44**

6-2 – R-Soph. – F  
Las Vegas, Nev.  
(Liberty HS/Utah)



**KYRA ELZY** **IHC**

Interim Head Coach  
(9th overall at UK)  
LaGrange, Ky.



**NIYA BUTTS** **AC**

Assistant Coach  
(10th overall at UK)  
Americus, Ga.



**AMBER SMITH** **AC**

Assistant Coach  
(10th overall at UK)  
Winter Haven, Fla.



**DANIEL BOICE** **IAC**

Interim Assistant Coach  
(5th Season at UK)  
Tucson, Ariz.



**AMY TILLEY** **AAD**

Asst. AD/Director of Ops.  
(11th overall at UK)  
Somerset, Ky.



**OLIVIA OWENS • 6-4 • RS-SOPHOMORE • CENTER • ALBANY, N.Y.**

- Earned her first career start against Marshall, scoring 10 points with five rebounds. Went 4-of-6 from the field and 2-of-2 from free throw line.
- Impressed in the early going with seven points and nine rebounds vs. Murray State and then five points, two rebounds, two blocks vs. Belmont.
- Transferred to UK after two seasons at Maryland where she sat out her sophomore season due to medical issues ... Played 16 games as a freshman.



**ROBYN BENTON • 5-9 • JUNIOR • GUARD • CONYERS, GA.**

- Shined in Kentucky's win at Kansas State with 11 points, hitting two 3s with three steals and five rebounds. Avg. 3.6 rebounds per game.
- Scored nine points in the fourth quarter to help UK earn the come-from-behind win vs. No. 13 IU. Ended with 12 points in the game with a 3.
- In her career at Auburn, went 62-of-179 from 3 with 90 steals and 46 assists ... Was granted immediate eligibility by NCAA to play this season.



**KEKE MCKINNEY • 6-1 • SENIOR • FORWARD • KNOXVILLE, TENN.**

- Recorded her second career double-double vs. Belmont with 10 points and 10 rebounds. Averaging 32.4 minutes and 6.5 rebounds this season.
- Vocal leader of the 2020-21 Wildcats that is poised for a huge season after averaging 6.5 points and 4.7 rebounds per game last season.
- Ranks 10th all-time in program history with 90 career blocks, including a team-best 42 last season. Has led UK in blocks each of the last two years.



**BLAIR GREEN • 6-0 • JUNIOR • GUARD • HARLAN COUNTY, KY.**

- Career game against Marshall, scoring 17 points with eight made field goals. Coach Elzy praised her movement and defense postgame.
- Good start to the season with 13 points vs. Murray and nine vs. Belmont. Hit a 3 in four games, including 3 vs. MSU. Has 3+ rebs in three games.
- Coaches have raved about how hard she worked this offseason to regain confidence and add muscle and they expect her to have a large impact.



**RHYNE HOWARD • 6-2 • JUNIOR • GUARD • CLEVELAND, TENN.**

- Team-best 22 points vs. IU, going 7-of-14 from the field, 3-of-6 from 3 and 5-6 from FT with four rebounds, two assists and a steal.
- First player in program history to be named an AP Preseason All-American ... Was the only unanimous selection on this year's AP team.
- Has scored 1,201 career points sitting 22nd in UK history in points scored. Needs 14 more points to tie for 21st and 301 to move into the top 10.



**TREASURE HUNT • 6-1 • FRESHMAN • GUARD • CHATTANOOGA TENN.**

- Strong start to the season with 12 points, hitting two 3s with a rebound vs. MSU ... Had an assist and two rebounds against Belmont.
- Ranked as a top-10 player in the 2020 class by All Star Girls Report, while ESPN ranked her as a five-star player and the 28th best in the class.
- Averaged 24.7 points per game with 5.3 rebounds per game, 2.3 assists per game and 1.6 steals per game as a senior at Hamilton Heights.



**JAZMINE MASSENGILL • 6-0 • JUNIOR • GUARD • CHATTANOOGA TENN.**

- Will sit out the 2020-21 season due to NCAA transfer rules after transferring to Kentucky following two strong seasons at Tennessee.
- One of three UK players from the Chattanooga area, playing high school basketball with Treasure Hunt while she played AAU with Rhyné Howard.
- Averaged 6.5 points per game, 4.7 rebounds per game and 4.1 assists per game as a sophomore at UT, hitting 40 percent from the field.



**TATYANA WYATT • 6-2 • SENIOR • FORWARD • COLUMBUS, GA.**

- In first action of the season, Wyatt played 13 minutes with two rebounds and a steal, hitting a huge 3-pointer in the second half vs. Indiana.
- Averaged 6.3 points and 3.7 rebounds per game hitting 39.4 percent from the floor with nine 3s. Will benefit from the post depth this season.
- Has played in 85 career games with 56 starts, hitting 40 percent from the field. Has a lingering foot issue that has caused her to miss time recently.



**CHASITY PATTERSON • 5-6 • JUNIOR • GUARD • HOUSTON, TEXAS**

- Has recorded 10 or more points in four games, including 13 vs. No. 13 IU with two steals. Has led UK in steals in three times this year.
- Scored 30 points in season opener with six rebounds and eight steals. First UK player since A'dia Mathies in 2011 to have eight steals in a game.
- Was named the SEC 6th Woman of the Year last season after playing 19 games and averaging 11.5 points per game with 29 assists and 25 3s.



**ERIN TOLLER • 5-7 • FRESHMAN • GUARD • LOUISVILLE KY.**

- Played in the first two games this season scoring six points against Murray State with three steals hitting a 3.
- A talented point guard who is a floor general at the position and can score in a variety of ways ... In-state prospect from Louisville's Sacred Heart.
- First-team all-state by the Herald-Leader after a strong senior season hitting 84 3s with 16.4 points per game and 5.7 rebounds per game.



**NYAH LEVERETTER • 6-3 • FRESHMAN • FORWARD • BLYTHEWOOD, S.C.**

- Played vs. Murray State and Belmont, scoring three points vs. the Racers with five rebounds and two blocks. Had 8 rebs. vs. Marshall in 22 minutes.
- Best season at Westwood High School was her senior year when she averaged 13.3 points per game and 11.0 rebounds per game.
- South Carolina Basketball Coaches Association AAAA All-State Team in 2019 after averaging 11.9 points and 9.8 rebounds as a junior.



**KAMERON ROACH • 5-6 • JUNIOR • GUARD • HOPKINS, S.C.**

- Scored her first points in nearly two years, playing 10 minutes vs. Marshall and hitting a 3. She also had two assists and a rebound.
- Played in 13 games in 2018-19 seeing 4.2 minutes per game before she tore her Achilles towards the end of 2018-19 and missed all of last season.
- Saw six minutes in the 2018-19 season opener vs. Alabama State with three steals, four rebounds and recorded her first 3 in a game



**EMMA KING • 5-10 • FRESHMAN • GUARD • STANFORD, KY.**

- Earned her first two career starts vs. Murray State and Belmont ... Did not score but had 1 reb., 3 asts. and 1 steal vs. MSU and 3 rebs vs. Belmont.
- Played in 15 games last season averaging 7.1 minutes per game ... Best game came in her debut against Mount St. Mary's, hitting two 3s with 7 pts.
- Led Lincoln County in scoring as a senior averaging 18.5 points and 7.3 rebounds while hitting 44.3 percent from the field and 38.2 percent from 3.



**DRE'UNA EDWARDS • 6-2 • SOPHOMORE • FORWARD • LAS VEGAS, NEV.**

- First UK player since 2016-17 to record three straight double-doubles: 14pts/10rebs vs. IU, 16pts/12rebs vs. K-State and 27pts/15rebs vs. Belmont.
- Transferred to UK after her freshman season at Utah averaging 11.6 points and 6.7 rebounds en route to Pac-12 Freshman of the Year honors.
- Missed the 2019-20 season due to NCAA transfer rules and a torn ACL she sustained at the end of the 2019 season.

**NATIONAL POLLS**

**THE ASSOCIATED PRESS TOP 25**

1	Stanford(24)	3-0
2	Louisville(2)	4-0
3	UConn(2)	0-0
4	NC State(2)	4-0
5	<b>South Carolina</b>	<b>4-1</b>
6	Arizona	3-0
7	Baylor	2-1
8	Oregon	4-0
9	<b>Kentucky</b>	<b>4-0</b>
10	<b>Texas A&amp;M</b>	<b>4-0</b>
11	UCLA	2-1
12	<b>Mississippi State</b>	<b>2-1</b>
13	<b>Arkansas</b>	<b>5-1</b>
14	Maryland	3-1
15	Oregon State	3-0
	<b>Indiana</b>	<b>2-1</b>
17	Northwestern	0-0
18	Ohio State	3-0
19	Michigan	4-0
20	Syracuse	3-0
21	Missouri State	2-1
22	South Dakota State	3-0
23	Texas	3-1
24	<b>DePaul</b>	<b>1-2</b>
25	Gonzaga	1-2

Other UK opps receiving votes: **Georgia 3**

**USA TODAY/COACHES PRESEASON TOP 25**

1	Stanford(22)	3-0
2	Louisville(6)	4-0
3	NC State(1)	4-0
4	<b>South Carolina(2)</b>	<b>4-1</b>
5	UConn	0-0
6	Arizona	3-0
7	Baylor	2-1
8	Oregon(1)	4-0
9	<b>Kentucky</b>	<b>4-0</b>
10	<b>Texas A&amp;M</b>	<b>4-0</b>
11	UCLA	2-1
12	<b>Mississippi State</b>	<b>2-1</b>
13	<b>Arkansas</b>	<b>5-1</b>
14	Maryland	3-1
15	<b>Indiana</b>	<b>2-1</b>
16	Oregon State	3-0
17	Northwestern	0-0
18	Syracuse	3-0
19	Ohio State	3-0
20	Michigan	4-0
21	South Dakota State	3-0
22	Missouri State	3-1
23	<b>DePaul</b>	<b>1-2</b>
24	Iowa State	2-2
25	Gonzaga	1-2

Other UK opps receiving votes:

**WEEK-BY-WEEK**

DATE	WEEK-BY-WEEK	AP	COACHES
Preseason		11	12
Dec. 1		11	n/a
Dec. 8		9	9
Dec. 15			
Dec. 22			
Dec. 29			
Jan. 5			
Jan. 12			
Jan. 19			
Jan. 26			
Feb. 2			
Feb. 9			
Feb. 16			
Feb. 23			
March 2			
March 9			
March 16			

**BY THE BIG BLUE NUMBERS**

career points for Rhyné Howard, ranking 22nd all-time at UK

1,201

wins in Kentucky Women's Basketball history

850

points for Rhyné Howard last season, ranking 4th nationally

633

number of wins for Kentucky inside Memorial Coliseum

465

3-pointers made last season which was a new school record.

252

percent graduation rate for four-year players under Coach Elzy at Kentucky

100

years of experience coaching in the SEC as a full-time assistant coach for Elzy, Butts and Smith combined

22

straight semesters with a overall team GPA above a 3.0

14

straight seasons ranking top 25 in national attendance

11

NCAA Tournament appearances since 2009-10 season

9

Kyra Elzy is the eighth head coach in Kentucky WBB history.

8

wins by Kyra Elzy as head coach of the Kentucky Wildcats

5



**KENTUCKY'S RECORD WHEN ...**

	ALL	SEC
Leading or tied at halftime	3-0	0-0
Trailing at halftime	2-0	0-0
Shoot 50 percent or higher	1-0	0-0
Shoot 60 percent or higher	0-0	0-0
Shoot less than 50 percent	4-0	0-0
Shoot higher percentage than opp.	3-0	0-0
Shoot lower percentage than opp	2-0	0-0
Opp. shoot worse than 50 percent	5-0	0-0
Opp. shoot 50 percent or higher	0-0	0-0
Opp. shoot 60 percent or higher	0-0	0-0
Score less than 60 points	0-0	0-0
Score 60 or more points	5-0	0-0
Score 70 or more points	4-0	0-0
Score 80 or more points	1-0	0-0
Score 90 or more points	0-0	0-0
Score 100 or more points	0-0	0-0
Opp. score 30 or less points	0-0	0-0
Opp. score 40 or less points	0-0	0-0
Opp. score 50 or less points	3-0	0-0
Opp. score 60 or less points	4-0	0-0
Opp. score 70 or less points	5-0	0-0
Opp. score 80 or less points	6-0	0-0
Opp. score 60 or more points	2-0	0-0
Opp. score 70 or more points	0-0	0-0
Opp. score 80 or more points	0-0	0-0
Opp. score 90 or more points	0-0	0-0
Outrebound or same as opponent	4-0	0-0
Outrebounded by opponent	1-0	0-0
Commit fewer turnovers than opp.	4-0	0-0
Commit same turnovers as opp.	0-0	0-0
Commit more turnovers than opp.	1-0	0-0
Commit single digit turnovers	1-0	0-0
Force 20 or more turnovers	1-0	0-0
Force 25 or more turnovers	1-0	0-0
Make 6 or more 3-pointers	3-0	0-0
Make 5 or fewer 3-pointers	1-0	0-0
Opp. make 6 or more 3-pointers	1-0	0-0
Opp. make 5 or fewer 3-pointers	4-0	0-0
Game decided by 10 pts or less:	1-0	0-0
Game decided by 1-5 pts:	1-0	0-0
Game decided by 6-10 pts:	0-0	0-0
Game decided by 11-15 pts:	1-0	0-0
Game decided by 16+ pts:	3-0	0-0
Overtime games:	0-0	0-0
Televised games:	5-0	0-0
SEC Network+	2-0	0-0
ESPN	1-0	0-0
ESPN2	0-0	0-0
ESPN3	0-0	0-0
SEC Network	1-0	0-0
ESPN+	1-0	0-0
ACC Network Extra	0-0	0-0
Games vs. AP ranked opponents:	1-0	0-0
Games vs. AP Top 10	0-0	0-0
Games following a loss:	0-0	0-0
Games following a win:	4-0	0-0
More points in the paint than opp.:	3-0	0-0
Fewer points in the paint than opp.:	2-0	0-0
Same points in the paint than opp.:	0-0	0-0
More points off turnovers:	5-0	0-0
Fewer points off turnovers:	0-0	0-0
Same points off turnovers:	0-0	0-0
More bench points than opp.:	2-0	0-0
Fewer bench points than opp.:	2-0	0-0
Same bench points as opp.:	1-0	0-0
More 2nd-chance points than opp.:	2-0	0-0
Fewer 2nd-chance points than opp.:	2-0	0-0
Same 2nd-chance points as opp.:	1-0	0-0
One UK player scores 10+:	0-0	0-0
Two UK players score 10+:	0-0	0-0
Three UK players score 10+:	3-0	0-0
Four UK players score 10+:	2-0	0-0
Five UK players score 10+:	0-0	0-0
Six UK players score 10+:	0-0	0-0
Seven UK players score 10+:	0-0	0-0
Eight UK players score 10+:	0-0	0-0
On Monday:	0-0	0-0
On Tuesday:	0-0	0-0
On Wednesday:	2-0	0-0
On Thursday:	1-0	0-0
On Friday:	0-0	0-0
On Saturday:	0-0	0-0
On Sunday:	2-0	0-0
In November:	2-0	0-0
In December:	3-0	0-0
In January:	0-0	0-0
In February:	0-0	0-0
In March:	0-0	0-0
In April:	0-0	0-0

**GAME NOTES**

**SERIES HISTORY VS. SAMFORD**

- Sunday's game will be the fourth all-time meeting between Kentucky and Samford in women's basketball. The Wildcats hold a 3-0 record in the series with all three games being played in Memorial Coliseum in Lexington.
- The first ever meeting was on Dec. 21, 2011 when UK won 90-61. The two teams also met on Nov. 27, 2016 with UK earning a 82-57 win. The last meeting was Dec. 8, 2019 when UK earned a 79-49 win.
- In the meeting last season, UK shot 52.6 percent from the field and went 11-of-23 from 3. Rhyne Howard paced UK with 30 points, going 11-of-19 from the field and 5-of-8 from 3 with six rebounds, three assists and three steals. KeKe McKinney scored seven points, while Blair Green scored nine points and Emma King hit a 3-pointer. Samford shot 37 percent from the field and went 7-of-19 from 3. Shauntai Battle led the Bulldogs with nine points, going 3-of-3 from long range with three assists and Natalie Armstrong scored six points with two rebounds.

**SCOUTING SAMFORD**

- Samford earned its first win of the season Friday when it took down North Alabama 79-66 at home. The Bulldogs were impressive in the win hitting 47.6 percent from the field, including eight 3s. Samford had 18 assists and scored 33 points off 28 North Alabama turnovers. Four Bulldogs scored in double figures paced by Andrea Cournoyer who had 19 points.
- The Bulldogs started the season with four losses, falling at Alabama 83-66, at Auburn 66-64, at Indiana 71-26 and vs. UT Martin 75-67.
- As a team, Samford is averaging 60.8 points per game while opponents are scoring 72.2 points per game. The Bulldogs are hitting 42 percent from the field and 36.7 percent from 3, while opponents are hitting 46.3 percent from the field. Teams are outrebounding Samford by five boards per game while SU is averaging 19.6 turnovers per game.
- Cournoyer is the team's leading scorer averaging 18.5 points per game while Shauntai Battle is averaging 15.0 points per game. Annie Ramil is leading the team with 7.8 rebounds per game while Natalie Armstrong is averaging 13.5 points per game.

**SERIES HISTORY VS. CURRENT ALIGNMENT OF THE SOUTHERN CONFERENCE**

- Kentucky owns a 17-1 all-time record against teams that make up the current alignment of Southern Conference. Samford is the first of two SoCon opponents that UK will face this season. The Wildcats will end non-conference play on Dec. 19 against Wofford.
- UK's lone loss to a SoCon team came on Dec. 12, 2008 vs. East Tennessee State.

**COMEBACK CATS STRIKE VS. NO. 13 INDIANA**

- Trailing by 14 in the first half and 13 at halftime, assistant coach Niya Butts challenged the team at halftime to get tougher and show the resilience that is preached in the program. The Wildcats responded by outscoring Indiana 49-32 in the second half, including 21-14 in the fourth quarter to earn the win.
- Indiana led for 31:53 in the game, including a double-digit lead for a majority of the second half. IU's biggest lead was 14 at 6:44 in the second quarter. UK erasing that lead marks the 12th-largest comeback in school history. The 14-point comeback win is the largest for Kentucky since March 6, 2015 when it trailed Mississippi State by 15 and came back to win.
- The 14-point comeback win is the largest for Kentucky at Memorial Coliseum since Dec. 1, 2013 vs. Louisville when the Cats also trailed by 14.
- After Indiana went up 10 at 59-49 with exactly 7:00 to go in the game, UK went on a 11-0 run over the next 4:09 to grab a 60-59 lead with 2:51 to play. UK now has a 10-0 run or better in every game this season. Indiana grabbed its last lead of the game when it ended UK's 11-0 run with two free throws but Kentucky responded with a 6-0 run, including two Edwards free throws and back-to-back baskets by Howard and Benton to seal the victory.
- Kentucky went 12-of-14 from the free-throw line in the fourth quarter, including 10-for-10 in the final 2:51 of the game.
- Kentucky hit a season-high eight 3s in the game, going 8-of-16 from long range.
- The Hoosier had limited their first two opponents to a combined 77 points with UK nearly doubling that Sunday with 72.

**4TH-QUARTER RALLY POWERS UK PAST K-STATE IN SEC/BIG 12 CHALLENGE**

- After a cold night from the field where the preseason national player of the year went just 3-of-14 from the field and 0-of-7 from 3, the Wildcats were searching for an answer on the road at Kansas State heading into the fourth quarter. UK was clinging to a 43-41 lead head-

ing into the final period before a K-State 3 gave them a one-point lead. It was then that UK kicked it into gear, outscoring K-State 17-5 the rest of the quarter, including ending the game on a 11-0 run to seal the win.

- All seven Wildcats that played in the quarter scored while Dre'una Edwards led the way with five points. Kentucky went 7-of-12 from the field while K-State was held to 3-of-12. Ten of UK's 17 points in the final quarter came in the paint while UK had four steals in the 4th.
- Edwards led the way with her second-straight double-double, scoring 16 points with 12 rebounds, while Chasity Patterson and Robyn Benton each had 11 points. Patterson added two assists while Benton hit two 3s and added three steals.

**BIG DAWG POWERING KENTUCKY WITH DOUBLE-DOUBLES**

- After only playing six minutes in Kentucky's season opener due to foul trouble, interim head coach Kyra Elzy told reporters postgame that they did not get to see how the real Dre'una Edwards in the game but would soon. She was right as Edwards led Kentucky the following game vs. Belmont, scoring 27 points with 15 rebounds, hitting two 3s with three steals in 29 minutes of play. Fifteen points and nine rebounds came in the second half alone.
- During the game, Edwards set a career high in field-goals made with 11 and attempted with 19. She also had a career high in 3s made with two. The double-digit scoring performance was the 19th of her career while it was the third 20+ performance for her. It was her eighth career double-double and she is the first Kentucky player with at least 27 points with 15 rebounds in a game since Evelyn Akhator vs. Miss. State on Feb. 23, 2017.
- Edwards recorded three straight double-doubles for the Wildcats after 16 points and 12 rebounds vs. Kansas State and 14 points and 10 rebounds against Indiana. Edwards is the first UK player since Akhator in 2016-17 to record three straight double-doubles. Edwards ranks fourth in the nation and second in the SEC in double-doubles.
- Edwards scored 13 points against Marshall with eight rebounds. She has hit a 3-pointer in every game but one this season. Edwards also had five assists, which led the team.

**PATTERSON BECOMING A STAR FOR WILDCATS**

- Chasity Patterson scored UK's first nine points vs. Murray State, hitting two 3-pointers and completing an and-one to set the tone early in UK's season opening 86-60 vs. the Racers.
- Patterson played 28 minutes in the game with 30 points, going 8-of-13 from the field, 2-of-4 from 3 and 12-of-13 from the free-throw line. She also grabbed a career-high six rebounds and career-high eight steals with three assists. Her 30-point performance was one-point shy of the program record of points scored by a UK player in a season opener.
- Patterson was lights out in the first half, going 5-of-6 from the field, 2-of-2 from 3 and 9-of-9 from the free-throw line for 21 first-half points. She also had four rebounds and three steals.
- Patterson is the third player in school history to score at least 30 points in a season opener joining Leslie Nichols (31 vs. Marshall on Nov. 22, 1985) and Valerie Still (30 vs. UT-Chattanooga on Nov. 30, 1981).
- Patterson has scored 10 or more points in every game but one this season. Patterson had 10 points vs. Belmont, 11 vs. Kansas State and 13 vs. Indiana, including two free throws that sealed the win late. She is averaging 13.6 points per game with a team-best 14 assists and 15 steals while she has hit four 3s and is averaging 3.8 rebounds per game.

**"MORE CONFIDENT" GREEN IMPRESSIVE IN OPENER**

- So far this preseason, UK coaches have raved about the confidence and performance of Blair Green, who came back to campus in July in shape, stronger and ready for a breakout season.
- Green started for UK vs. Murray State, going 5-of-10 from the field and 3-of-5 from 3 with 13 points. She added four rebounds, three assists, one block and one steal. This was the third time in Green's career she hit 3 or more 3s and the 11th 10+ point game.
- Against Belmont, Green hit a 3-pointer and scored nine points with four rebounds.
- Green had a career game against Marshall, scoring a career-high 17 points with a rebound and two steals. Green also set career highs in field goals made with eight and tied a career high in field goals attempted with 13.
- Green has hit a 3 in four games this season and is averaging 27.6 minutes per game.

**MCKINNEY THE LEADER**

- Since the first day she stepped on campus, KeKe McKinney has been the obvious vocal leader for the Wildcats with her outgoing personality and natural leadership skills. The forward showed that yet again in UK's opener, playing a team-high 32 minutes with six points, three rebounds, four steals, two assists and two blocks. Her four steals tied a career high.
- Coach Elzy talked postgame about how McKinney was key to UK's success in the season

**KENTUCKY UNDER COACH ELZY**

(2021-Present)	Total
Home Games.....	4-0
Memorial Coliseum.....	4-0
Rupp Arena.....	0-0
Road Games.....	1-0
Neutral Sites.....	0-0
SEC Games:.....	0-0
Home.....	0-0
Road.....	0-0
Regular season, non-conference.....	5-0
Home.....	4-0
Road.....	1-0
Neutral.....	0-0
vs. ranked teams in non-conference.....	0-0
SEC Tournament.....	0-0
NCAA Tournament.....	0-0
WNIT.....	0-0
Leading or tied at halftime.....	3-0
Trailing at halftime.....	2-0
Shoot 50 percent or higher.....	1-0
Shoot less than 50 percent.....	4-0
Shoot higher percentage than opp.....	4-0
Shoot lower percentage than opp.....	1-0
Shooting same percentage as opp.....	0-0
Opp. shoots worse than 50 percent.....	5-0
Opp. shoots 50 percent or higher.....	0-0
Score fewer than 60 points.....	0-0
Score 60 or more points.....	5-0
Score 70 or more points.....	4-0
Score 80 or more points.....	1-0
Score 90 or more points.....	0-0
Score 100 or more points.....	0-0
Opp. scores 30 or fewer points.....	0-0
Opp. scores 40 or fewer points.....	0-0
Opp. scores 50 or fewer points.....	3-0
Opp. scores 60 or fewer points.....	4-0
Opp. scores 70 or fewer points.....	5-0
Opp. scores 80 or fewer points.....	5-0
Opp. scores 90 or more points.....	0-0
Opp. scores 60 or more points.....	2-0
Opp. scores 70 or more points.....	0-0
Opp. scores 80 or more points.....	0-0
Opp. scores 90 or more points.....	0-0
Outrebounds or same as opponent.....	3-0
Outrebounded by opponent.....	2-0
Commits fewer turnovers than opp.....	4-0
Commits same turnovers as opp.....	0-0
Commits more turnovers than opp.....	1-0
Force 30 or more turnovers.....	1-0
Makes 6 or more 3-pointers.....	3-0
Makes 5 or fewer 3-pointers.....	2-0
Game decided by 10 pts or fewer:.....	1-0
Game decided by 1-5 pts:.....	1-0
Game decided by 11-15 pts:.....	1-0
Game decided by 16+ pts:.....	3-0
Overtime games.....	0-0
Televised games.....	5-0
Games vs. ranked opponents.....	1-0
Games vs. top 10 ranked opponents.....	0-0
Games following a loss.....	0-0
Games following a win.....	4-0
More points in the paint than opp.....	3-0
Fewer points in the paint than opp.....	2-0
Same points in the paint than opp.....	0-0
More bench points than opp.....	2-0
Fewer bench points than opp.....	2-0
Same bench points as opp.....	1-0
More 2nd-chance points than opp.....	2-0
Fewer 2nd-chance points than opp.....	2-0
Same 2nd-chance points as opp.....	1-0
On Monday.....	0-0
On Tuesday.....	0-0
On Wednesday.....	2-0
On Thursday.....	1-0
On Friday.....	0-0
On Saturday.....	0-0
On Sunday.....	2-0
In November.....	2-0
In December.....	3-0
In January.....	0-0
In February.....	0-0
In March.....	0-0
In April.....	0-0

## SEC STANDINGS (12/12)

Team	SEC	Pct.	All
Georgia	0-0	.000	5-0
Kentucky	0-0	.000	5-0
Texas A&M	0-0	.000	5-0
Alabama	0-0	.000	4-0
Ole Miss	0-0	.000	3-0
Missouri	0-0	.000	1-0
Arkansas	0-0	.000	6-1
Florida	0-0	.000	5-1
South Carolina	0-0	.000	4-1
Auburn	0-0	.000	3-1
Tennessee	0-0	.000	3-1
Mississippi State	0-0	.000	2-1
Vanderbilt	0-0	.000	1-1
LSU	0-0	.000	0-3

# - Regular season champions

^ - Tournament champions

## CAREER DOUBLE-DOUBLES

### TATYANA WYATT: 1 CAREER (0 SEASON)

2017-18 (1)

20 points, 10 rebounds vs. Evansville, 12-5-17

### KEKE MCKINNEY: 2 CAREER (1 SEASON)

2020-21 (1)

10 points, 10 rebounds vs. Belmont, 11-29-20

2019-20 (1)

10 points, 10 rebounds vs. Stetson, 11-13-19

### RHYNE HOWARD: 11 CAREER (0 SEASON)

2019-20 (6)

14 points, 11 rebounds vs. Mount St. Mary's, 11-5-19

13 points, 11 rebounds at Virginia, 11-16-19

22 points, 11 rebounds vs. Texas A&M, 1-17-20

26 points, 12 rebounds at LSU, 1-19-20

26 points, 10 rebounds vs. Miss. State, 2-16-20

24 points, 11 rebounds vs. South Carolina, 2-23-20

2018-19 (5)

25 points, 12 rebounds vs. North Carolina, 11-24-18

17 points, 10 rebounds vs. Morehead State, 11-28-18

25 points, 10 rebounds at Louisville, 12-09-18

20 points, 11 rebounds vs. Ole Miss, 1-13-19

18 points, 14 rebounds vs. Arkansas, 2-17-19

### DRE'UNA EDWARDS: 3 CAREER (3 SEASON)

2020-21 (3)

27 points, 15 rebounds vs. Belmont, 11-29-20

16 points, 12 rebounds at Kansas State, 12-3-20

14 points, 10 rebounds vs. Indiana, 12-6-20

opener vs. Murray State: "I thought KeKe (McKinney) really stepped up to the plate in our black press, we scored off of our defense."

- McKinney followed with her second career double-double vs. Belmont, scoring 10 points with 10 rebounds. She had five points and eight rebounds against Kansas State. McKinney played 35 minutes vs. Indiana with five rebounds, three assists, two blocks and took a key charge late in the game.
- McKinney ranks 10th all-time in program history with 90 blocks, needing 3 more to move into a tie for ninth with Alyssa Rice at 93.
- McKinney missed the Marshall game due to a shoulder injury and is listed day-to-day.

## KENTUCKY ENTERS THE TOP 10 OF THE AP POLL

- For the first time since 2016, Kentucky has entered the top 10 of the Associated Press Top 25, ranking No. 9 in this week's listing. This is the 90th week all-time that UK has been ranked inside the AP Top 10. UK's highest ranking is No. 4 in 1982-83.
- UK began the season ranked in the top 16 of both preseason listings, which was the highest preseason rankings for the Wildcats since the 2014-15 team started at No. 11 in the AP Top 25 and No. 10 in the Coaches' Top 25. UK has finished its season ranked in the top 25 of both major listings 10 of the last 11 seasons.
- In the AP poll, UK will face No. 5 South Carolina (twice), No. 10 Texas A&M, No. 12 Mississippi State, No. 13 Arkansas, No. 24 DePaul and Georgia, who is receiving votes. In the coaches' poll, UK is scheduled to play No. 4 South Carolina (twice), No. 10 Texas A&M, No. 12 Mississippi State, No. 13 Arkansas and No. 23 DePaul.
- UK is 1-0 against ranked teams this season defeating then-No. 13 Indiana.

## STRONG DEBUT FOR HUNT, LEVERETTER, TOLLER

- All three true freshmen for Kentucky played in the season opener vs. Murray and performed well. Treasure Hunt led the way with 12 points, going 2-of-5 from 3. Her 12 points ties the 11th highest scoring output for a UK player in their varsity debut. Toller played nine minutes and scored six points with three steals, hitting a 3, while Leveretter played 17 minutes and grabbed five rebounds with three points and two blocks.

## OWENS, BENTON IMPRESS IN DEBUTS

- Robyn Benton and Olivia Owens showed they are going to be impact players for UK in the season opener. Owens was the first sub off the bench for Kentucky and played 18 minutes with seven points and nine rebounds. Benton played 20 minutes and scored seven points with five rebounds, three assists and two steals. Both brought energy and played solid on the defensive end for the Wildcats.
- Benton hit her first 3 as a Wildcat against Belmont and scored nine points with five rebounds and led UK with four assists. Owens played 17 minutes and scored five points with two rebounds and two blocks.
- Against Kansas State, Benton was the spark UK needed off the bench scoring 11 points with five rebounds and three steals. Owens gave UK great minutes, playing 10 minutes with two points and two rebounds.
- Benton was huge in Kentucky's win against No. 13 Indiana, scoring 12 points, going 3-of-5 from the field and 1-of-2 from 3 with a rebound and a block. In the fourth quarter with Kentucky trailing 55-59, Benton hit a 3 and followed with two free throws the following possession to give UK its first lead since early in the game.

## NEWCOMERS IMPRESS IN EARLY GOING

- Kentucky welcomes six newcomers to the 2020-21 team in true freshmen Treasure Hunt, Nyah Leveretter and Erin Toller, along with transfers Olivia Owens, Robyn Benton and Jazmine Massengill. All are expected to provide significant depth to the Wildcats this season with the exception of Massengill, who will sit out the 2020-21 season due to NCAA transfer rules. Owens and Benton were given waivers from the NCAA to be eligible immediately.
- Hunt was the MaxPreps Tennessee Player of the Year last year while Toller and Leveretter were all-state honorees. Hunt, Toller and Leveretter signed National Letters of Intent to play at Kentucky back in November and make up a top-15 recruiting class in the nation according to ESPN.com. Hunt was picked to play in the exclusive Jordan Brand Classic and McDonald's All-American Game, while Leveretter and Toller were McDonald's AA Game nominees.
- Owens, who was a five-star prospect and one of the best centers in the nation coming out of high school in 2018, joined the Kentucky program in June after transferring from Maryland. Owens played 16 games her freshman season at Maryland after sitting out last season due to medical issues. She hit 55 percent from the field as a rookie at Maryland with her best performance coming in the Big 10 Championship game where she played six minutes with four



points and four rebounds.

- Benton, who was an All-Southeastern Conference Freshman Team selection at Auburn before averaging double-digit points as a sophomore for the Tigers, transferred to Kentucky in April. She played in 52 career games at Auburn and upped her numbers last season from 2018-19 after missing the first nine games due to injury. Last year, she played in 20 games with 14 starts averaging 10.1 points per game with 27 3s, 56 steals and 28 assists.

## 2019-20 SEASON RECAP

- After an impressive season that ended with 22 wins, another top-four finish in SEC play and an expected at-large selection in the NCAA Tournament, UK finished the 2019-20 season ranked No. 16 in the Associated Press Top 25 and No. 18 in the USA Today/Coaches Top 25.
- Kentucky was ranked inside the top 20 of both rankings all season long, peaking at No. 11 in both polls in mid-January. This was the 10th time in program history that UK has finished inside the top 16 of the AP's final listing.
- UK finished 2019-20 with a 22-8 record securing its 20th 20-win season in program history and its 10th under then-head coach Matthew Mitchell. Prior to Mitchell's tenure, Kentucky had never won 10 wins in league play while UK did it 10 times under Mitchell. UK also finished top four in the SEC for the 11th time under Mitchell securing a top-four seed in the SEC Tournament for the 11th time in program history and 10th time under Mitchell.
- During the season, the Wildcats earned three wins over ranked opponents taking down No. 6 Mississippi State, No. 12 Texas A&M and No. 22 Tennessee. The win vs. Mississippi State was Kentucky's first over a top-10 team since taking down No. 2/3 Mississippi State back in February 2017 in Lexington. UK also defeated Tennessee in the quarterfinals of the SEC Tournament marking the first time the Wildcats have beat the Lady Vols twice in the same season and the first three-game winning streak against Tennessee in program history.
- Statistically the Wildcats put together one of the best seasons in program history in 2019-20. Kentucky hit 252 3-pointers during the year, which set a new program record for 3s made by a team, surpassing the previous record of 240 makes in 2012-13. UK hit 10 or more 3s in 13 games and hit a new school-record 16 3-pointers in the win vs. Alabama in Tuscaloosa. The Wildcats 36.3 percent from long range, which was the fifth best percentage in program history while its 72.5 points per game was its best scoring average since 2015-16.

## WHERE UK FINISHED IN THE NCAA RANKINGS IN 2019-20 ...

- UK ended the 2019-20 season fourth nationally in turnover margin at 7.90, while it was 11th nationally in fewest turnovers with 361 and 33rd nationally in assist-turnover ratio at 1.14. The Wildcats 252 3s ranked 24th in the nation and second in the SEC, while its 8.4 3s made per game was 21st nationally and second in the SEC and its 3-point field-goal percentage was 23rd nationally and second in the league.

## WILDCATS RETURN 8 LETTERWINNERS FROM LAST SEASON

- Entering its first season under interim head coach Kyra Elzy, Kentucky returns a large portion of its production for 2020-21 even with the departure of five 2020 seniors due to graduation. UK will bring back its top two scorers, while also returning its top two rebounders. Kentucky will also add Maryland transfer Olivia Owens, Auburn transfer Robyn Benton, 2019 Pac-12 Freshman of the Year Dre'una Edwards and a top-15 recruiting class in true freshmen Treasure Hunt, Nyah Leveretter and Erin Toller.
- Rhyne Howard is the leading returner for the Wildcats after a long list of accomplishments and honors last season. The guard was one of five finalists for the John R. Wooden Award and Ann Meyers Drysdale National Player of the Year Award while also being named a first-team All-America honoree by the Associated Press and United States Basketball Writers Association. The 2020 SEC Player of the Year finished second nationally in scoring last season with 23.4 points per game while she hit a school-record 84 3-pointers during the year.
- Also returning will be the 2020 SEC 6th Woman of the Year in Chasity Patterson, who averaged 11.5 points in 19 games last season. In the post, UK returns KeKe McKinney, who averaged 6.5 points and 4.7 rebounds, and Tatyana Wyatt, who averaged 5.5 points and 3.7 rebounds. Kentucky natives Blair Green and Emma King will also be back for the Wildcats and hope to build on promising 2019-20 seasons.
- Several players will return to the team but did not see time last year due to injury or NCAA transfer rules. Edwards headlines that list after impressing during her freshman year at Utah along with guard Kameron Roach, who is healthy after she tore her Achilles at the end of her sophomore season and used last year to rehab and regain strength.

## 20-POINT SCORING GAMES

RHYNE HOWARD		32
29	vs. Southern	11/11/18
20	vs. UCLA	11/23/18
25	vs. North Carolina	11/24/18
25	at Louisville	12/09/18
25	vs. Murray State	12/21/18
20	vs. Ole Miss	1/13/19
21	at Texas A&M	1/27/19
23	at Alabama	2/11/19
25	vs. Missouri	3/8/19
21	at NC State	3/25/19
24	vs. Stetson	11/13/19
24	vs. Morehead State	11/21/19
27	vs. Grambling State	11/26/19
29	vs. Charlotte	12/04/19
30	vs. Samford	12/08/19
26	vs. Louisville	12/15/19
29	at California	12/21/19
28	at South Carolina	01/02/20
37	vs. Tennessee	01/05/20
43	at Alabama	01/09/20
22	at Florida	01/12/20
24	vs. Texas A&M	01/16/20
26	at LSU	01/19/20
20	at Arkansas	02/09/20
26	vs. Mississippi State	02/16/20
21	at Ole Miss	02/20/20
24	vs. South Carolina	02/23/20
25	vs. Georgia	02/27/20
26	at Vanderbilt	03/01/20
24	vs. Tennessee	03/06/20
26	vs. Mississippi State	03/07/20
22	vs. Indiana	12/06/20

TATYANA WYATT		1
20	vs. Evansville	12/5/17

CHASITY PATTERSON		4
20	at Florida	01/12/20
25	vs. Florida	02/02/20
32	at Arkansas	02/09/20
30	vs. Murray State	11/25/20

DRE'UNA EDWARDS		1
27	vs. Belmont	11/29/20

**STARTING LINEUP RECORDS**

Team	G	G	G	F	F	Result
Murray St.	Patterson	King	Green	Edwards	McKinney	W, 86-60
Belmont	Patterson	King	Green	Edwards	McKinney	W, 70-50
Kansas St.	Patterson	Howard	Green	Edwards	McKinney	W, 60-49
Indiana	Patterson	Howard	Green	Edwards	McKinney	W, 72-68
Marshall	Patterson	Howard	Green	Edwards	Owens	W, 79-45

**Record by Lineups:**

1.	Patterson	King	Green	Edwards	McKinney	2-0
2.	Patterson	Howard	Green	Edwards	McKinney	2-0
3.	<b>Patterson</b>	<b>Howard</b>	<b>Green</b>	<b>Edwards</b>	<b>Owens</b>	<b>1-0</b>

**bold** indicates last starting lineup used

**MEDIA INFORMATION**

**CREDENTIAL REQUESTS**

Requests for media credentials for 2020-21 Kentucky WBB home games should be made to wesley.crane@uky.edu. Requests for UK away games should go to the UKACPR office of the home team. Requests should be made by Monday of the game week.

**MEDIA PARKING**

No reserved media parking will be available this season for Kentucky women's basketball games at Memorial Coliseum. Media can find parking locations around Memorial Coliseum online at UKathletics.com.

**UK WEBSITE -- UKATHLETICS.COM**

Visit the official University of Kentucky Athletics web site at ukathletics.com. The official Southeastern Conference web site is secsports.com.

**GET LIVE STATS ON YOUR LAPTOP!**

To access live game stats on your personal laptop, go to kentucky.statbroadcast.com. There should be no password this season.

**UK MEDIA CONFERENCE**

Each game week via Zoom interim head coach Kyra Elzy will hold a press conference to discuss the upcoming games. Check with UK ACPRs for exact times and dates. Selected quotes from the media conference are available via ukathletics.com.

**WEEKDAY INTERVIEWS**

Interview Policies-General — All interviews with Kentucky women's basketball players or staff members must be arranged through the Athletics Communication and Public Relations office. Media should never contact a player or coach directly. In accordance with NCAA time management legislation, player interview requests must be submitted by Sunday at noon for the following week. Team locker rooms, and other team quarters are private team areas. Media members are not permitted in these areas unless accompanied by appropriate University personnel.

**POST GAME INTERVIEWS**

The visiting team coach and select players will be available via Zoom if requests following a 10-minute cooling off period. Coach Elzy will follow the visiting coach and UK players will be last. A member of the Athletics Communication and Public Relations staff will solicit media requests for players at the final media timeout. Quotes will be available for all working media in the Athletics Communications and Public Relations office and on the official UK web site, ukathletics.com.

**SEC MEDIA PORTAL – HIGHLIGHTS, GAME PHOTOS, PRESS CONFERENCES**

The SEC and XOS Digital will provide a platform for distribution of game highlights, game photos and press conference content. Highlights from all SEC women's basketball games be available via the SEC Media Portal. Whenever school press conferences are available, they will be posted to the portal as well. Still photography will be available in the portal for the media at halftime and following each SEC women's basketball game and video will be available after each game. The SEC Media Access Guidelines continue to apply to this content and are outlined in the 2020-21 credentialing registration process. To request access to the SEC Media Portal and create an account, contact: licensing@xosdigital.com.

**2020-21 HONORS**

**RHYNE HOWARD**

- Cheryl Miller Award Preseason Watch List
- Naismith Trophy Preseason Watch List
- WBCA Wade Trophy Preseason Watch List
- Wooden Award Preseason Top 30 Watch List
- SEC Preseason Player of the Year (coaches and media)
- SEC Preseason All-SEC First Team (coaches and media)
- AP First-Team Preseason All-American (unanimous)

**WILDCATS LOOKING TO CONTINUE 3-POINT SHOOTING**

- Kentucky shot 36.3 percent from 3 last season which was the fifth-best 3-point field goal percentage for a season in program history. UK hit 252 3-pointers in 2019-20, which was the most 3s made in a single season in program history. Rhyne Howard hit 84 3s last season in just 27 games, which set a new program record for 3s in a season.
- The Wildcats return four of their top 5 3-point shooters from last season, including Howard and Chasity Patterson (23-75), KeKe McKinney (23-55) and Blair Green (22-70).
- UK should also add some long-range weapons this season as the coaches has raved about the shooting performances this preseason of several players. Robyn Benton was a quality 3-point shooter at Auburn last season and Dre'una Edwards can stretch the floor and knock down outside shots. True freshman Treasure Hunt and Erin Toller have shot well this preseason, while returners Emma King and Kameron Roach are both strong shooters.

**HOWARD EARNS ALL THE PRESEASON HONORS AND THEN SOME**

- It seemed every day for the last two weeks junior Rhyne Howard was receiving more and more preseason praise as the guard has headlined nearly every preseason watch list ans been named SEC Preseason Player of the Year by league coaches and league media.
- Howard has been named to the 2021 Jersey Mike's Naismith Trophy Preseason Watch List, 2021 WBCA Wade Trophy Watch List and 2021 Cheryl Miller Award Preseason Watch List. Howard was a finalists last season for the Naismith Trophy and Cheryl Miller Award.
- Howard became the first Kentucky women's basketball player to be named a first-team pre-season All-American earlier this month by the AP. She has also been named a Preseason All-American by Lindy's Sports.

**RHYNE HOWARD FOR NATIONAL PLAYER OF THE YEAR! RHYNEHOWARD.COM**

- It was an amazing sophomore season for Rhyne Howard, who was a first-team All-America honoree by the AP, USBWA and Wooden Award and a finalist for the Naismith Trophy, Cheryl Miller Award and Ann Meyers Drysdale National Player of the Year award.
- Howard led the Wildcats and ranked second nationally with 23.4 points per game. The guard also led UK with 6.5 rebounds per game and 62 steals, while she was second on the team with 29 blocks and third on the team with 68 assists. Howard hit 84 3-pointers last season, which was the most in program history in a single season, topping the previous record of 81 set by Sara Potts in 2004-05. Her 3.1 3-pointers per game in 2019-20 ranked top-10 nationally while her 633 total points ranked fifth nationally. Howard's 23.4 scoring average was the most for a UK player under Matthew Mitchell and the fourth-best in program history.
- Howard placed her name all over the Kentucky record books in 2019-20 as the only player in program history to score 25 or more points in five straight games while she was the second player to score 20 or more points in eight straight games. Howard had two stretches during the season of 20 or more points in eight straight games, including each of her last eight games played after missing three games with a finger injury.
- Two of the top-12 scoring performances in program history came last season by Howard. The first was her 37 points in UK's win vs. Tennessee followed by a school-record tying 43 points at Alabama. She is the only player in program history to score 37+ points in consecutive games and the first to hit seven or more 3-pointers in consecutive games. Howard earned six double-doubles last season and has 11 for her career.
- Howard has scored 1,201 career points sitting 22nd in UK history in points scored. Needs 14 more points to tie for 21st and 301 to move into the top 10. She became the second-fastest player in program history to reach 1,000 last season in her 53rd career game.
- In 62 career games, Howard has ...
  - \* Hit at least one 3 in 55 career games.
  - \* Made three or more 3s in 28 career games.
  - \* Made five or more 3s in 11 career games.
  - \* Scored 10+ points in 54 career games.
  - \* Scored 15+ points in 44 career games.
  - \* Scored 20+ points in 32 career games.
  - \* Scored 25+ points in 19 career games.
  - \* Scored 30+ points in 3 career games.
  - \* Led UK in scoring in 39 career games.
  - \* Led UK in rebounding in 33 games career games.
  - \* Led UK in assists in 17 career games.
  - \* Led UK in steals in 23 career games.
  - \* Led UK in blocks in 23 career games.

**UK IN NCAA/SEC STATS**

Category	TEAM (AS OF 12/12)		
	NCAA Rank	SEC Rank	Stat
Ast/TO Ratio	54	5	1.13
Assists	46	8	70
Asts/game	111	9	14
Blocks	57	4	16
Blks/game	132	8	3.2
Fewest Fouls	233	9	80
Fewest TOs	180	8	62
FG%	93	12	43.6
FG% defense	50	5	35.2
FT Attempts	80	9	80
FT Made	68	8	57
FT%	102	5	71.2
Fouls/game	69	3	16
Reb. margin	86	10	5.6
Rebounds	26	5	210
Rebs/game	90	9	42
Scoring Def.	24	2	54.4
Scoring Margin	36	7	19
Scoring Off.	107	13	73.4
Steals	16	3	51
Steals/game	55	4	10.2
3FG% Def.	61	5	24.7
3FG made	47	4	32
3FG/game	135	7	6.4
3FG%	170	11	29.6
TO margin	32	4	6.2
TOs Forced	90	7	18.6
TOs/game	34	3	12.4
W-L%	1	1	100

INDIVIDUAL	NCAA	SEC	STAT
Blocks - McKinney	86	10	5
Blks/gm - McKinney	161	14	1.25
Dbls-Dbls - Edwards	6	2	3
FG Made - Edwards	51	6	30
Patterson	132	13	53
FG% - Edwards	101	8	54.5
Points - Edwards	103	13	72
Patterson	129	14	68
FT Attempts - Patterson	111	13	20
FT Made - Patterson	98	11	16
FT % - Patterson	200	12	80.0
Rebounds - Edwards	22	5	46
Rebs/gm - Edwards	95	8	9.2
Steals - Patterson	11	3	15
Edwards	128	13	5
Steals/gm - Patterson	45	3	3.0



**STAT SUPERLATIVES**

Here are some UK career statistical superlatives among current players:

Most Games Played:  
93 KeKe McKinney

Most Games Started:  
73 KeKe McKinney

Consecutive Games Started:  
5 by Blair Green, Dre'una Edwards, Chasity Patterson

Games with Double-Figure Scoring:

	2020-21	Career
Rhyne Howard	2	54
Tatyana Wyatt	0	20
KeKe McKinney	1	11
Blair Green	2	12
Chasity Patterson	4	14
Treasure Hunt	1	1
Dre'una Edwards	4	4
Robyn Benton	2	2
Olivia Owens	1	1

Current Streak of Consecutive Games Played with Double-Figure Scoring:  
4 by Dre'una Edwards  
2 by Rhyne Howard  
1 by Olivia Owens, Blair Green

Games with Double-Figure Rebounding:

	2020-21	Career
Rhyne Howard	0	12
KeKe McKinney	1	4
Tatyana Wyatt	0	2
Dre'una Edwards	3	3

Consecutive Games with Double-Figure Rebounding:  
n/a

Games with a Double-Double:

	2020-21	Career
Rhyne Howard	0	11
Tatyana Wyatt	0	1
KeKe McKinney	1	2
Dre'una Edwards	3	3

Consecutive Games with Double-Double:  
n/a

40-point games:

	2020-21	Career
Rhyne Howard	0	1

30-point games:

	2020-21	Career
Rhyne Howard	0	3
Chasity Patterson	1	2

20-point games:

	2020-21	Career
Rhyne Howard	1	32
Chasity Patterson	1	4
Tatyana Wyatt	0	1
Dre'una Edwards	1	1

Consecutive 20-point games:  
n/a

Consecutive Games with a 3-pointer:  
6 by Chasity Patterson  
3 by Dre'una Edwards, Robyn Benton  
1 by Rhyne Howard  
1 by Tatyana Wyatt

Consecutive Games with at least one steal:  
7 by Rhyne Howard  
7 by Chasity Patterson  
4 by Dre'una Edwards  
4 by Robyn Benton  
1 by Blair Green  
1 by Kameron Roach

**KENTUCKY PICKED TO FINISH 2ND BY LEAGUE COACHES, 3RD BY MEDIA**

- SEC coaches tabbed UK to finish second in the league standings this season while league media picked the Wildcats to finish third. Both league coaches and league media picked Rhyne Howard as the SEC Preseason Player of the Year and Preseason All-SEC First Team.

**ELZY NAMED INTERIM HEAD COACH**

- Following the abrupt retirement of Matthew Mitchell, who is the winningest head coach in program history, Kentucky Director of Athletics Mitch Barnhart moved quickly to name Kyra Elzy as the associate head coach. Elzy has spent eight seasons as an assistant coach for Kentucky, including six of those years as associate head coach. She has been a part of some of the best seasons in program history.
- In her eight years as an assistant coach at Kentucky, the Wildcats have been to the NCAA Tournament six times, including two NCAA Elite Eights. UK won the SEC Regular Season Championship in 2012 - only its second in program history. UK has had a winning season in seven of those eight seasons, including six 20-win seasons and six 10+ wins in league play.
- Under Elzy, UK win 181 games, including 78 league games and 23 vs. ranked teams.
- At Kentucky, Elzy has coached three SEC Player of the Year (Victoria Dunlap, A'dia Mathies, Rhyne Howard), three SEC Freshman of the Year (A'dia Mathies, Bria Goss, Rhyne Howard), one SEC Defensive Player of the Year (Victoria Dunlap), two SEC 6th Woman of the Year (Keyla Snowden, Chasity Patterson), two SEC Scholar-Athletes of the Year (Alyssa Rice and Maci Morris) and her players have earned 39 All-SEC honors overall.

**THE MAGIC "80"**

- The Wildcats hold a remarkable 359-24 (.937) record since 1974 when scoring 80 points or more. The last loss came at Arkansas on Feb. 9, 2020 when the Cats fell 103-85 inside Bud Walton Arena.

**UK IN OVERTIME**

- UK is 30-27 all-time in overtime games, including a 11-5 mark under Mitchell, who is 13-6 in his 15-year career as a head coach in OT.

**KENTUCKY ALL-TIME**

- Kentucky is 850-548 (.608) in its 46th year of varsity women's basketball.

**KENTUCKY ALL-TIME AT HOME**

- UK is 493-176 all-time at home (.736). Kentucky is 465-159 (.744) all-time in Memorial Coliseum and 28-19 (.595) all-time in Rupp Arena.
- If you do the math, you will notice UK's losses in Memorial Coliseum and Rupp Arena are 2 more than UK has home losses. That reason is UK's NCAA Tournament Sweet 16 game vs. Washington at Rupp Arena on March 25, 2016 and its NCAA Tournament game vs. Indiana on March 18, 1983 at Memorial Coliseum cannot count towards UK's home record.

**CATS SHINE IN THE CLASSROOM**

- Kyra Elzy has put an emphasis on academics since arriving on campus as an assistant coach several years ago. The Wildcats have had a 3.0 team GPA or better each of the last 14 semesters. In nine seasons with Coach Elzy on staff, Kentucky has a 100-percent graduation rate among four-year players.

**EIGHT CATS PLAYING OVERSEAS**

- Kentucky women's basketball currently has 10 alumnae who signed professional contracts to play overseas for the 2020-21 season.
  - Evelyn Akhator is playing in France
  - Sabrina Haines (5'10"-G-97) signed for Radivoj Korac in Serbian 1 ZLS
  - Jennifer O'Neill (5'5"-PG-90) signed for Lublin in Polish EBLK
  - Janee Thompson (5'7"-PG-93) signed for A3 Basket in Swedish Damligan
  - Bria Goss (5'10"-G-92) signed for Satu Mare in Romanian Liga Nationala
  - Amanda Paschal (5'7"-G-96) plays for Team Seattle in the Eurobasket S.League
  - Jaida Roper (5'6"-G-98) plays for Team Los Angeles in the Eurobasket S.League
  - Azia Bishop, Taylor Murray and Maci Morris plan to go back overseas once the pandemic ends.

## 11 STRAIGHT YEARS TOP 20 IN ATTENDANCE

- It was another magical year inside Memorial Coliseum and Rupp Arena for UK in 2019-20 as the Wildcats won 14 home games and finished with an average home attendance of 4,756 ranking 19th nationally. This marks the 11th straight year the Wildcats have finished in the top 20 in NCAA national average attendance.
- Throughout 17 home games – two played inside historic Rupp Arena – Kentucky accumulated a total season attendance of 80,853, marking the 11th straight season the Wildcats have amassed 80,000 fans or more.
- Kentucky has averaged 4,500 or more fans every year since 2009-10. The Wildcats have continuously pushed the school's attendance numbers to new altitudes in the last 12 seasons. Kentucky was involved in two of the top-25 most attended games in the nation during the 2019-20 season, including 11,256 fans vs. Louisville at Rupp Arena which ranked 23rd.
- The Wildcats attracted large crowds not only in Lexington, but all across the country. A total of 135,443 fans attended Kentucky games, ranking the team 18th nationally.
- The Southeastern Conference once again led the nation in attendance with an average of 4,183 fans per game and a total attendance of 924,471. The Big 12 was second in the rankings with a average attendance of 4,046

## ELZY CONTINUES SEC WIN CHALLENGE FOR WE BACK PACK

- For the ninth consecutive season, UK interim head coach Kyra Elzy and her husband Dexter, are leading the SEC Win Challenge to help raise awareness and funds for Alzheimer's research through the Pat Summitt Foundation. The 2019-20 SEC Win Challenge raised over \$25,000 for the foundation.

## MITCHELL RETIRES AS WINNINGEST HEAD COACH

- Matthew Mitchell, who was the seventh head coach in program history and won 303 games at the helm of the program retired from coaching on Nov. 12 and thus resigned as head coach. Mitchell had brain surgery this offseason after sustaining a concussion and missed most of pre-season practice in recovery. Mitchell briefly returned to practice in late October/early November but after struggling to get back to full speed he elected to retire.
- Here are some of the accomplishments during Mitchell's 13-year tenure: Became UK's all-time winningest coach on March 3, 2013 with 139 wins in just six seasons ... Including the storied history of the UK MBB program, he was the third Kentucky Basketball head coach to win 300 games with the Wildcats joining Adolph Rupp and John Calipari ... Had 129 career SEC wins, which at the time of his retirement was 8th most in league history ... Two-time SEC Coach of the Year (2010 & 2019) ... Was the eighth coach in league history to win multiple honors ... Led UK to postseason play in 11 of his 13 seasons. (2 WNIT, 9 NCAA, 1 canceled NCAA) ... School-record eight consecutive NCAA Tournament appearances from 2010-2017 ... Three NCAA Elite Eight finishes. (2010, 2012 and 2013) ... Five Sweet 16 appearances. (2010, 2012, 2013, 2014, 2016) ... Led UK to its first SEC Regular Season Championship in 30 years during the 2011-12 season ... Twelve top-four finishes in the SEC in his 13 seasons ... 132 consecutive appearances in the AP Top 25 poll from 2009-10 to 2017 (8th longest streak in poll history.) ... School-record eight straight 20-win seasons from 2010-2017 ... Compiled an impressive 183-42 (.813) mark at home (includes Rupp) ... Led UK to a school-record 30 wins in 2012-13.

## CATS IN THE RECORD BOOKS

IND. CAREER RECORDS		1,000 POINT CLUB
<b>SCORING AVERAGE</b>		1. Valerie Still, 2,763
1. Valerie Still	23.2	2. A'dia Mathies, 2,014
<b>2. RHYNE HOWARD</b>	<b>19.4</b>	3. Victoria Dunlap, 1,846
3. Leslie Nichols	18.2	4. Leslie Nichols, 1,797
4. Pam Browning	14.9	5. Makayla Epps, 1,790
5. A'dia Mathies	14.4	6. Maci Morris, 1,692
6. Bebe Croley	14.2	7. Samantha Mahoney, 1,601
7. Victoria Dunlap	13.9	8. Pam Browning, 1,598
8. SeSe Helm	13.8	9. Sara Potts, 1,563
9. Evelyn Akhator	13.7	10. Sarah Elliott, 1,502
10. Makayla Epps	13.5	11. Elisabeth Lukschu, 1,488
<b>3-POINT FIELD GOALS MADE</b>		12. Selia "SeSe" Helm, 1,487
1. Sara Potts	271	13. Stacey Reed, 1,482
2. Maci Morris	252	14. Jennifer O'Neill, 1,449
3. Jennifer O'Neill	197	15. Tiffany Wait, 1,445
4. A'dia Mathies	177	16. Jodie Whitaker, 1,433
5. Keyla Snowden	176	17. Taylor Murray, 1,359
6. Stacey Reed	175	18. Kristi Cushenberry, 1,358
<b>7. RHYNE HOWARD</b>	<b>164</b>	19. Belitta Croley, 1,339
8. Jenny Pfeiffer	162	20. Bria Goss, 1,318
<b>3-POINT FIELD GOALS ATT.</b>		21. Stacy McIntyre, 1,215
1. Sara Potts	719	<b>22. RHYNE HOWARD, 1,201</b>
2. Maci Morris	613	23. Maria Donhoff, 1,187
3. Jennifer O'Neill	564	24. LaTonya McDole, 1,180
4. Stacey Reed	548	25. Lea Wise, 1,179
5. A'dia Mathies	481	26. Patty Jo Hedges, 1,176
6. Keyla Snowden	477	27. Jocelyn Mills, 1,170
7. Jenny Pfeiffer	467	28. Karen Mosley, 1,135
<b>8. RHYNE HOWARD</b>	<b>431</b>	29. Janet Timperman, 1,080
9. Carly Morrow	395	30. Tedra Eberhart, 1,071
10. Christina Jansen	388	31. Kim Denkins, 1,057
<b>3-PT FG % (MIN. 200 ATT.)</b>		32. Debbie Miller, 1,031
1. Maci Morris	41.1	33. Laura Meadows, 1,024
2. Kristi Cushenberry	39.7	Janee Thompson, 1,024
<b>3. RHYNE HOWARD</b>	<b>38.1</b>	35. Sandy Harding, 1,023
4. Sara Potts	37.7	
5. Keyla Snowden	36.9	
6. Jodie Whitaker	36.8	
A'dia Mathies	36.8	
8. Shaunda Roberts	36.2	
9. Tiffany Wait	36.1	
10. Mia Daniel	35.5	
<b>BLOCKS</b>		
1. Sarah Elliott	195	
2. Victoria Dunlap	178	
3. Valerie Still	156	
4. Azia Bishop	152	
5. J. Humphrey	107	
6. Leslie Nichols	102	
7. Samarie Walker	96	
8. Laura Meadows	95	
9. Alyssa Rice	93	
<b>10. KEKE MCKINNEY</b>	<b>90</b>	
<b>STEALS PER GAME (MIN. 75 STEALS)</b>		
1. Stacey Reed	2.710	
2. Leslie Nichols	2.504	
3. Rita Adams	2.427	
4. Victoria Dunlap	2.310	
5. A'dia Mathies	2.286	
6. Patty Jo Hedges	2.266	
7. Taylor Murray	2.259	
<b>8. RHYNE HOWARD</b>	<b>2.161</b>	
9. Christina Jansen	2.140	
10. LaTonya McDole	2.076	
11. Sandy Harding	2.018	

**WHEN WAS THE LAST TIME ...**

**SCORING**

**A player scored 40+ points:** 43, Rhyne Howard, at Alabama, 1-9-20  
**A player scored 30+ points:** 30, Chasity Patterson vs. Murray St., 11-25-20  
**A player scored 25+ points:** 27, Dre'una Edwards vs. Belmont, 11-29-20  
**A player scored 20+ points:** 22, Rhyne Howard vs. Indiana, 12-6-20  
**Player came off the bench to score 20 or more points:** 32, Chasity Patterson at Arkansas, 2-9-20  
**Two players score 20 or more points in a game:** 20 Rhyne Howard and 32 Chasity Patterson at Arkansas, 2-9-20  
**Three players had 20 or more points in a game:** vs. Morehead St., 11-18-15 (28, Alexis Jennings; 22, Janee Thompson; 21 Makayla Epps)  
**Two players score 30 points or more in a game:** n/a  
**A player record five or more consecutive 20-plus point games:** 8 by Rhyne Howard (20 at Arkansas, 2-9-20; 26 vs. MSU, 2-16-20; 21 at Ole Miss, 2-20-20; 24 vs. SC, 2-23-20; 25 vs. UGA, 2-27-20; 26 at VU, 3-1-20; 24 vs. Tennessee, 3-6-20; 26 vs. Miss. St., 3-7-20)  
**A player record four or more consecutive 20-plus point games:** 8 by Rhyne Howard (20 at Arkansas, 2-9-20; 26 vs. MSU, 2-16-20; 21 at Ole Miss, 2-20-20; 24 vs. SC, 2-23-20; 25 vs. UGA, 2-27-20; 26 at VU, 3-1-20; 24 vs. Tennessee, 3-6-20; 26 vs. Miss. St., 3-7-20)  
**A player record three or more consecutive 20-plus point games:** 8 by Rhyne Howard (20 at Arkansas, 2-9-20; 26 vs. MSU, 2-16-20; 21 at Ole Miss, 2-20-20; 24 vs. SC, 2-23-20; 25 vs. UGA, 2-27-20; 26 at VU, 3-1-20; 24 vs. Tennessee, 3-6-20; 26 vs. Miss. St., 3-7-20)  
**A player record back-to-back 20-plus point games:** 8 by Rhyne Howard (20 at Arkansas, 2-9-20; 26 vs. MSU, 2-16-20; 21 at Ole Miss, 2-20-20; 24 vs. SC, 2-23-20; 25 vs. UGA, 2-27-20; 26 at VU, 3-1-20; 24 vs. Tennessee, 3-6-20; 26 vs. Miss. St., 3-7-20)  
**A player record four or more consecutive 25-plus point games:** 5 by Rhyne Howard (26 vs. UofL, 12-15-19; 29 at Cal, 12-21-19; 28 at South Carolina, 1-2-20; 37 vs. Tennessee, 1-5-20; 43 at Alabama, 1-9-20)  
**A player record back-to-back 30-plus point games:** Rhyne Howard 37 vs. Tennessee, 1-5-20; 43 at Alabama, 1-9-20  
**A player score 15 or more points in the 1st half:** 31, Chasity Patterson vs. Murray State, 11-25-20  
**A player score 15 or more points in the 2nd half and OT:** 15, Dre'una Edwards, vs. Belmont, 11-29-20  
**A player score 20+ points in the 1st half:** 26, Rhyne Howard vs. Louisville, 12-15-19  
**A player score 20+ points in the 2nd half and OT:** 26, Chasity Patterson at Arkansas, 2-9-20  
**A player hit a last-second shot to win the game:** Rhyne Howard at Cal, 12-21-19 (hit the game-winning basket with 3.2 remaining in the contest to put Kentucky up 63-61)  
**A freshman score 25 points or more:** 25, Rhyne Howard vs. Missouri, 3-8-19  
**All five starters in double figures:** vs. Oklahoma, 3-21-16  
**No player scored in double figures:** vs. LSU, 1-16-03

**DOUBLE-DOUBLES**

**A player record a double-double:** Dre'una Edwards (14pts/10rebs) at Indiana, 12-6-20  
**10-20 Game:** Evelyn Akhator (14pts/23rebs), vs. Ohio State, 3-19-17  
**20-20 Game:** Valerie Still (42 pts/20 rbs) vs. Charleston, 12-19-82  
**20-10 Game:** Dre'una Edwards (27pts/15rebs) vs. Belmont, 11-29-20  
**30-10 Game:** Victoria Dunlap (33 pts/18 rbs) vs. Butler, 11-15-09  
**More than one player with a double-double in the same game:** Dre'una Edwards (27pts/15rebs) and KeKe McKinney (10pts/10rebs) vs. Belmont, 11-29-20  
**Three players with a double-double in the same game:** Alexis Jennings (28pts/13rebs), Evelyn Akhator (12pts, 16rebs), Makayla Epps (21pts, 11rebs,12asts) vs. Morehead State, 11-18-15

**A player record back-to-back double-doubles:** Dre'una Edwards (3) (27pts/15rebs) vs. Belmont, 11-27-20; (16pts/12rebs) at Kansas State, 12-3-20; (14pts/10rebs) vs. Indiana, 12-6-20  
**More than one player record back-to-back double-doubles:** Victoria Dunlap (11 pts/12 rbs) and Eleia Roddy (13 pts/10 rbs) vs. NCAT, 1-1-09; Victoria Dunlap (20 pts/15 rbs) and Eleia Roddy (11 pts/10 rbs) vs. Miami (Ohio), 1-3-09  
**Double-Double in Points and Rebs:** Dre'una Edwards (14pts/10rebs) vs. Indiana, 12-6-20  
**Double-Double in Points and Assists:** Taylor Murray (23pts/10 ast) vs. UNC, 11-24-18  
**Double-Double in Points and Blocks:** n/a  
**Double-Double in Points and Steals:** Leslie Nichols (18 pts/11 steals) vs. Louisville, 2-14-86  
**A player record four or more consecutive double-doubles:** 5 by Evelyn Akhator (10pts/14rebs) vs. Washington, 3-25-16, (18pts/10rebs) vs. Miami, 11-11-16, (28pts/13rebs) vs. Albany, 11-12-16, (17pts/11rebs) vs. New Hampshire, 11-17-16, (12pts/14rebs) at Colorado, 11-19-16  
**A player record five or more consecutive double-doubles:** 5 by Evelyn Akhator (10pts/14rebs) vs. Washington, 3-25-16, (18pts/10rebs) vs. Miami, 11-11-16, (28pts/13rebs) vs. Albany, 11-12-16, (17pts/11rebs) vs. New Hampshire, 11-17-16, (12pts/14rebs) at Colorado, 11-19-16  
**A player record a triple-double in a game:** (2nd in school history) Makayla Epps, vs. Morehead State, (21pts, 12ast, 11 rebs) 11-18-15  
**A player record a perfect game (at least five FGs made):** Makayla Epps vs. Middle Tennessee, 12-12-14 (6-of-6 FGs)  
**5 or more players score in double figures:** 5 at Ole Miss (2-20-20) - Howard (21), Green (10), Patterson (15), Haines (15), Roper (10)  
**6 or more players score in double figures:** 6 vs. WCU (12-18-18) - Wyatt (16), Morris (13), Howard (18), Murray (11), Paschal (11), Roper (12)  
**7 or more players score in double figures:** 8 vs. Lipscomb (11-21-13) - Stallworth (14), Walker (10), Thompson (16), Goss (18), Evans (12), O'Neill (11), Pinkett (15), Harper (12)

**FIELD GOALS**

**Made 12 FG in a game:** 14, Rhyne Howard at Alabama, 1-9-20  
**Made 13 FG in a game:** 14, Rhyne Howard at Alabama, 1-9-20  
**Made 14 FG in a game:** 14, Rhyne Howard at Alabama, 1-9-20  
**Made 15 FG in a game:** 18, Makayla Epps vs. Mississippi State, 1-12-15  
**Made 16 FG in a game:** 18, Makayla Epps vs. Mississippi State, 1-12-15  
**Made 17 FG in a game:** 18, Makayla Epps vs. Mississippi State, 1-12-15  
**Made 18 FG in a game:** 18, Makayla Epps vs. Mississippi State, 1-12-15

**FIELD GOALS ATTEMPTED**

**Attempted 29 FG in a game:** 30, Makayla Epps vs. Miss. State, 1-12-15  
**Attempted 28 FG in a game:** 30, Makayla Epps vs. Miss. State, 1-12-15  
**Attempted 27 FG in a game:** 27, Rhyne Howard vs. Tennessee, 1-5-20  
**Attempted 26 FG in a game:** 26, Rhyne Howard vs. Miss. State, 3-7-20  
**Attempted 25 FG in a game:** 26, Rhyne Howard vs. Miss. State, 3-7-20  
**Attempted 24 FG in a game:** 26, Rhyne Howard vs. Miss. State, 3-7-20  
**Attempted 23 FG in a game:** 26, Rhyne Howard vs. Miss. State, 3-7-20  
**Attempted 22 FG in a game:** 26, Rhyne Howard vs. Miss. State, 3-7-20  
**Attempted 21 FG in a game:** 26, Rhyne Howard vs. Miss. State, 3-7-20  
**Attempted 20 FG in a game:** 26, Rhyne Howard vs. Miss. State, 3-7-20

**THREE-POINTERS**

**A player with 5 in a game:** 5, Rhyne Howard vs. Tennessee, 3-6-20  
**A player with 6 in a game:** \*7, Rhyne Howard at Alabama, 1-9-20  
**A player with 7 in a game:** \*7, Rhyne Howard at Alabama, 1-9-20  
**Attempted 10 or more in a game:** 11, Rhyne Howard at VU, 3-1-20  
**Made 7+ in back-to-back games:** \*7, Rhyne Howard at Alabama, 1-9-20



## WHEN WAS THE LAST TIME ...

### FREE THROWS

**Made 10 FT in a game:** 12, Chasity Patterson vs. Murray St., 11-25-20  
**Made 11 FT in a game:** 12, Chasity Patterson vs. Murray St., 11-25-20  
**Made 12+ FT in a game:** 12, Chasity Patterson vs. Murray St., 11-25-20  
**Attempted 10 FT in a game:** 13, Chasity Patterson vs. Murray St., 11-25-20  
**Attempted 11 FT in a game:** 13, Chasity Patterson vs. Murray St., 11-25-20  
**Attempted 12 FT in a game:** 13, Chasity Patterson vs. Murray St., 11-25-20  
**Attempted 15+ FTs in a game:** 15, Makayla Epps vs. Miami, 11-11-16  
**Hit 100% (10+ attempts):** Jaida Roper, 02-27-20 (11-11) vs. Georgia

### REBOUNDS

**A player with 10+ rebounds:** 10, Dre'una Edwards vs. Indiana, 12-6-20  
**A player with 11+ rebounds:** 12, Dre'una Edwards vs. K-State, 12-3-20  
**A player with 12+ rebounds:** 12, Dre'una Edwards vs. K-State, 12-3-20  
**A player with 13+ rebounds:** 15, Dre'una Edwards vs. Belmont, 11-29-20  
**A player with 14+ rebounds:** 15, Dre'una Edwards vs. Belmont, 11-29-20  
**A player with 15+ rebounds:** 15, Dre'una Edwards vs. Belmont, 11-29-20  
**A player with 16+ rebounds:** 23, Evelyn Akhator vs. Ohio St., 3-19-17  
**A player with 17+ rebounds:** 23, Evelyn Akhator vs. Ohio St., 3-19-17  
**A player with 18+ rebounds:** 23, Evelyn Akhator vs. Ohio St., 3-19-17  
**A player with 19+ rebounds:** 23, Evelyn Akhator vs. Ohio St., 3-19-17  
**A player with 20+ rebounds:** 23, Evelyn Akhator vs. Ohio St., 3-19-17  
**A player with 21+ rebounds:** 23, Evelyn Akhator vs. Ohio St., 3-19-17  
**A player with 25+ rebounds:** \*27, Valerie Still vs. National College, 2-9-82  
**A player with back-to-back games with 15+ rebounds:** Evelyn Akhator  
 15 rebs at Alabama (1-12-17); 16 rebs vs. Georgia (1-15-17)  
**10+ Rebs in 3 consecutive games:** 3, Dre'una Edwards (11-29-20 - 12-6-20)  
**10+ Rebs in four consecutive games:** 5, Evelyn Akhator (3-25-16 -  
 11-19-16)  
**10+ Rebs in five consecutive games:** 5, Evelyn Akhator (3-25-16 -  
 11-19-16)  
**10+ Rebs in six consecutive games:** 7, Eleia Roddy (2008)  
**Two players grab 10+ rebounds in a game:** 10, McKinney and 15,  
 Wyatt vs. Belmont, 11-29-20  
**Three players grab 10+ rebounds in a game:** 16, Akhator; 13, Jennings;  
 11, Epps vs. Morehead State, 11-18-15

### ASSISTS

**A player with 8+ assists in a game:** 8, Amanda Paschal vs. Morehead  
 State, 11-21-19  
**A player with 9+ assists in a game:** 10, Taylor Murray vs. UNC, 11-24-18  
**A player with 10+ assists in a game:** 10, Taylor Murray vs. UNC, 11-24-18  
**A player with 11+ assists in a game:** 11, Taylor Murray vs. UF, 2-19-17  
**A player with 12+ assists in a game:** 12, Makayla Epps vs. Morehead  
 State, 11-18-15

### BLOCKS

**A player with 5 or more blocks in a game:** 5, KeKe McKinney vs.  
 Alabama, 1-6-20  
**A player with 6 or more blocks in a game:** 6, Alexis Jennings vs.  
 Oklahoma, 3-21-16  
**A player with 7 or more blocks in a game:** \*7, DeNesha Stallworth  
 vs. Texas A&M, 2-18-13

### STEALS

**A player with 5 steals in a game:** 8, Chasity Patterson vs. Murray St, 11-25-20  
**A player with 6 steals in a game:** 8, Chasity Patterson vs. Murray St, 11-25-20  
**A player with 7 steals in a game:** 8, Chasity Patterson vs. Murray St, 11-25-20  
**A player with 8 steals in a game:** 8, Chasity Patterson vs. Murray St, 11-25-20  
**A player with 9 steals in a game:** 9, A'dia Mathies vs. Neb.-Omaha, 11-23-11  
**A player with 10 steals in a game:** 10, Erica Jackson vs. ECU, 2-16-99  
**A player with 11 or more steals in a game:** \*11, Leslie Nichols vs.  
 Louisville, 2-14-86

### MINUTES

**Played every minute of a game:** 40 Taylor Murray vs. LSU, 2-4-18  
**Played over 40 minutes:** 44, Taylor Murray vs. Missouri, 3-8-19  
**Played over 45 minutes:** 45, Makayla Epps & Makenzie Cann at  
 Louisville, 12-4-16  
**Played over 50 minutes:** 51, Kastine Evans vs. Baylor - 4OT, 12-6-13

### FOULS

**Four or more UK players foul out in a game:** Jennifer Humphrey,  
 Sarah Elliott, Chanté Bowman, Brittany Edelen vs. Louisville, 12-3-06

### THE LAST TIME KENTUCKY...

**Won a game by 20 or more pts:** +34 (79-45) vs. Marshall, 12-9-20  
**Won an SEC game by 20 or more pts:** +21 (86-65) vs. Tennessee, 3-6-20  
**Won a game by 30 or more pts:** +34 (79-45) vs. Marshall, 12-9-20  
**Won an SEC game by 30 or more pts:** +42 (94-52) at Ole Miss, 2-20-20  
**Won a game by 40 or more pts:** +42 (94-52) at Ole Miss, 2-20-20  
**Won an SEC game by 40 or more points:** +42 (94-52) at Ole Miss, 2-20-20  
**Won a game by 50 or more pts:** +55 (91-36) vs. Winthrop, 12-11-19  
**Won an SEC game by 50 or more pts:** \*+53 (100-47) vs. Miss. St., 1-17-13  
**Won a game by 60 or more pts:** +60 (99-39) vs. WCU, 12-18-18  
**Won a game by 70 or more pts:** +75 (100-25) vs. Jacksonville St.,  
 11-15-11  
**Scored 100 pts or more in a game:** 100 vs. Evansville, 12-5-17  
**Scored 100 pts or more in an SEC game:** 108 vs. Ole Miss, 2-13-14  
**Scored 90 points or more in a game:** 94 at Ole Miss, 2-20-20  
**Scored 90 points or more in three straight games:** 96 vs. Wagner,  
 11-10-13; 103 vs. Georgia Southern, 11-13-13; 96 vs. Central  
 Michigan, 11-17-13  
**Scored 90 points or more in four straight games:** 4 - 96 vs. Wagner,  
 11-10-13; 103 vs. Georgia Southern, 11-13-13; 96 vs. Central  
 Michigan, 11-17-13, 116 vs. Lipscomb 11-12-13  
**Scored 80 points or more in a game:** 86 vs. Tennessee, 3-6-20  
**Scored 50 points or more in the first half:** 53 vs. Georgia, 2-27-20  
**Scored 50 points or more in the second half:** 58 at Ole Miss, 2-20-20  
**Scored 60 points or more in first half:** 60 vs. Grambling, 12-29-13  
**Scored 60 points or more in second half:** 60 vs. Ole Miss, 2-13-14  
**Lost a game by 20 or more points:** -27 (99-72) at S. Carolina, 1-2-20  
**Lost a game by 30 or more points:** -30 (93-63) vs. South Carolina, 3-5-16  
**Lost a game by 40 or more points:** -44 (39-83) vs. Tennessee, 1-27-2001  
**Lost an SEC game by 40 or more pts:** -44 (39-83) vs. Tennessee, 1-27-01  
**Lost a game by 50 or more points:** -72 (38-110) vs. Tennessee, 1-21-01  
**Lost a game by 60 or more points:** -72 (38-110) vs. Tennessee, 1-21-01  
**Lost a game by 70 or more points:** -72 (38-110) vs. Tennessee, 1-21-01  
**Allowed 100 points:** 130 by Baylor, 12-6-13  
**Allowed 90 or more points:** 99 by South Carolina, 1-2-20  
**Scored fewer than 50 points:** 50 at Virginia, 11-16-19  
**Scored fewer than 40 points:** 36 vs. LSU, 12-18-2005  
**Scored fewer than 25 points in a half:** 25 (1st) at K-State, 12-3-20  
**Scored fewer than 20 points in a half:** 16 (1st) at LSU, 1-19-20  
**Held opponent to 50 points or fewer:** 45 by Marshall, 12-9-20  
**Held opponent to 40 points or fewer:** 36 vs. Winthrop, 12-11-19  
**Held opponent to 30 points or fewer:** 24 by Jackson St., 11-29-15  
**Held opponent to 20 pts or fewer in the 1st half:** 18 at Ole Miss, 2-20-20  
**Held opponent to 20 pts or fewer in the 2nd half:** 18 vs. Winthrop, 12-11-19  
**Held SEC opp. to 20 pts or fewer in the 1st half:** 18 at Ole Miss, 2-20-20  
**Held an opponent to 10 points or fewer in the first half:** \*9 by  
 Charleston Southern, 12-10-04  
**Held an opponent to 10 points or fewer in the second half:** \*7 by  
 Jackson St., 11-29-15  
**Won a game after trailing at the half:** Indiana, 12-6-20 (36-23)  
**Won a game after trailing 10+ at the half:** Indiana, 12-6-20 (36-23)  
**Won an SEC game after trailing at the half:** at Tenn., 1-5-20 (33-35)

**WHEN WAS THE LAST TIME ...**

**Won after trailing at the half at home:** vs. Indiana, 12-6-20 (36-23)  
**Won after trailing at the half on the road:** at K-State, 12-3-20 (27-25)  
**Scored 100 or more points and lost:** n/a  
**Scored 80 points or more and lost:** at Arkansas, 2-9-20 (103-85)  
**Scored 50 points or fewer and won:** 50 at Virginia, 11-16-19  
**Game decided by one point:** vs. Louisville, 12-15-19 (L, 67-66)  
**Game decided by two points:** at Cal, 12-21-19 (63-61)  
**Game decided by three points:** at Virginia, 11-16-19 (50-47)  
**Shot 50 percent or better vs. non-conference opponent:** 54.1% (33-of-61) vs. Marshall, 12-9-20  
**Shot 50% or better vs. SEC opponent:** 50.8% (33-of-65) vs. Tenn., 3-6-20  
**Shot 50 percent or better in consecutive games:** two - Samford (52.6%) 12-08-19; WCU (52.4%) 12-11-19  
**Shot 55 percent or better:** 56.7 vs. Austin Peay, 12-1-19  
**Shot 60 percent or better:** 64.7 vs. Alabama, 1-25-18  
**Shot 70 percent or higher in a half:** 71.4 (1st half) vs. Middle Tenn., 12-15-18  
**Shot 60 percent or higher from 3:** 60.0 vs. Middle Tenn., 12-15-18  
**Shot 30 percent or lower:** 29.6 vs. S.Carolina, (16-of-54), 2-23-20  
**Shot 20 percent or lower:** 20.0 vs. Georgia, (12-of-60), 3-02-07  
**Shot 15% or lower in a half:** 13.6 (1st half) vs. USC (3-of-22), 3-2-08  
**Held an opponent to lower than 30 percent:** 28.8% (17-of-59) by Belmont, 11-29-20  
**Held an opponent to lower than 20 percent:** 15.6% (7-of-45) by Jackson State, 11-29-15  
**Held an opponent to lower than 15 percent in a half:** 4.2% (2nd half) vs. Jackson State, 11-29-15  
**Opponent shot 50 percent or better:** 50.9% by Miss. State (29-57), 3-7-20  
**Opponent shot 60 percent or better:** 61.0% by SC (36-of-59), 1-2-20  
**Opponent shot 50 percent or better in consecutive games:** Two straight - Florida, 58.0% (29-of-50), 1-31-16; South Carolina, 52.0% (26-of-50), 2-4-16  
**Did not hit a 3-pointer:** vs. Missouri, 3-8-19 (0-of-16)  
**Held opponent without a 3-pointer:** S.Carolina, 12-23-20 (0-of-5)  
**Held consecutive opponents without a 3-pointer:** Delaware State, 11-10-12 (0-of-0) and Baylor, 11-13-12 (0-3)  
**Opponent hit 10 or more 3-pointers:** 14 by Arkansas, 2-9-20  
**Hit 10 or more 3-pointers:** 11 vs. Tennessee, 3-6-20  
**Hit 11 or more 3-pointers:** 11 vs. Tennessee, 3-6-20  
**Hit 12 or more 3-pointers:** 12 vs. Georgia, 2-27-20  
**Hit 13 or more 3-pointers:** \*16 at Alabama, 1-9-20  
**Hit 10+ 3s in three straight games:** \*Four straight - Charlotte 10 (12/04), Samford 11 (12/08), Winthrop 13 (12/11), UofL (12/15)  
**Pulled down 60 or more rebounds:** \*67 vs. Morehead State, 11-18-15  
**Pulled down 65 or more rebounds:** \*67 vs. Morehead State, 11-18-15  
**Had 20 or more Reb. than Opp:** 22 vs. SHU, 12-29-18 (57-35)  
**Had 30 or more assists in a game:** 32 vs. Morehead St., 11-18-15  
**Had 20 or more assists in a game:** 20 vs. Marshall, 12-9-20  
**Had 20 or more assists in three straight games:** 4 - 32 vs. Morehead St., 11-18-15; 24 vs. Colorado 11-22-15; 26 vs. Eastern Michigan 11-25-15; 22 vs. Jackson State 11-29-15  
**Had 20 or more assists in four straight games:** 32 vs. Morehead St., 11-18-15; 24 vs. Colorado 11-22-15; 26 vs. Eastern Michigan 11-25-15; 22 vs. Jackson State 11-29-15  
**Had 20 or more assists in five straight games:** 26 vs. Louisville (2/23/82); 25 vs. Alabama (2/26/82); 29 vs. LSU (2/27/82), 27 vs. Tennessee (2/28/82) and 24 vs. Illinois (3/14/82)  
**Had 19 or more blocks in a game:** \*19 vs. North Carolina A&T, 12-6-05  
**Had 10 or more blocks in a game:** 10 vs. Evansville, 12-5-17  
**Opponent had 10 or more blocks in a game:** 12 vs. Tennessee, 1-5-20  
**Had 15 or more steals in a game:** 19 vs. Murray State, 11-25-20  
**Had 20 or more steals in a game:** 23 vs. Alabama State, 11-7-18  
**Had 25 or more steals in a game:** \*28 vs. West Virginia, 12-12-93

**Opponent had 15 or more steals in a game:** 17 by LSU, 1-17-19  
**Forced 30 or more turnovers in a game:** 32 vs. Murray St., 11-25-20  
**Forced 30 or more turnovers in an SEC game:** 31 vs. Tennessee, 3-3-13  
**Forced 40 or more turnovers in a game:** 43 vs. Alabama State, 11-7-18  
**Committed 30 or more turnovers in a game:** 30 at Florida, 1-31-16  
**Committed 30 or more turnovers and won:** 34 vs. Green Bay, 3-19-12  
**Committed five turnovers or fewer:** 5 vs. NC State, 3-25-19  
**Committed 10 turnovers or fewer in a non-con game:** 9 at K-State, 12-3-20  
**Committed 10 turnovers or fewer in an SEC game:** 8 at Ole Miss, 2-20-20  
**Opponent committed fewer than 10 turnovers:** 9 by Indiana, 12-6-20  
**Attempted 40 FT:** 42 vs. Tennessee St., 3-20-15  
**Attempted fewer than five FT:** 4 vs. South Carolina, 1-13-11  
**Made 30 FT:** 31 vs. Tennessee St., 3-20-15  
**Made 40 FT:** 49\* vs. Baylor, 12-6-13  
**Hit 100 percent from the free-throw line (min. 10 made):** \*12-of-12 vs. Missouri, 1-13-13  
**Won an overtime game:** vs. UCLA, 11-24-18, (75-74) (N) 1OT  
**Lost an overtime game:** vs. Missouri, 3-8-19 (70-68) (N) 1OT  
**Played a double-overtime game:** vs. Miss. State, 2-12-15 (92-90) (H)  
**Played a triple-overtime game:** vs. Baylor, 12-6-13 (133-130) (N) 4OT  
**Played a quadruple-overtime game:** vs. Baylor, 12-6-13 (133-130) (N) 4OT  
**Started three freshmen in a game:** (Evans, Conwright, Drake) vs. UTC, 12-11-10  
**Started four freshmen in a game:** (Mendeng, Helm, Hawthorne, Stoglin) vs. Tennessee, 1-27-2001  
**Defeated a Top-5 opponent:** 2-23-17 - #22/rv UK 78 - #3/2 vs. Miss. State 75 (OT) (H)  
**Defeated a Top-10 opponent:** 2-16-20 - #18/19 UK 73 - #6/5 vs. Miss. State 62 (H)  
**Defeated a Top-25 opponent:** 2-16-20 - #18/19 UK 73 - #6/5 vs. Miss. State 62 (H)  
**Defeated a Top-25 non-conference opponent at home:** 12-6-20 - #11/13 UK 72 - #13/15 Indiana 68 (H)  
**Defeated a Top-25 non-conference opponent on the road:** 11-15-15 - #17/18 UK 68 - #15/15 Arizona State 64 (A)  
**Defeated a Top-25 opponent at a neutral site:** 11-22-18 - #rv UK 85 - #17 vs. USF 63 (N) - 2018 Paradise Jam  
**Defeated a Top-10 SEC opponent at home:** 2-16-20 - #18/19 UK 73 - #6/5 vs. Miss. State 62 (H)  
**Defeated a Top-25 SEC opponent at home:** 2-16-20 - #18/19 UK 73 - #6/5 vs. Miss. State 62 (H)  
**Defeated a Top-25 opponent on the road:** 2-21-19 - #16 UK 65 - #13 vs. South Carolina 57 (A)  
**Defeated a Top-25 SEC opponent on the road:** 2-21-19 - #16 UK 65 - #13 vs. South Carolina 57 (A)  
**Defeated a Top-10 opponent on the road:** 12-7-14 - UK 77 - #7/7 Louisville 68 (A)  
**Defeated a Top-10 SEC opponent on the road:** 2-16-14 - UK 75 - #8/8 Tennessee 71 (A)  
**Was defeated by an unranked opp. (while ranked) at home:** vs. Florida (70-62), 2-2-20 (#13/13)  
**Was defeated by an unranked opp. (while ranked) on the road:** at Vanderbilt (64-70), 3-1-20 (#15/16)  
**Was defeated by an unranked opp. (while ranked) at a neutral site:** vs. Missouri (70-68), 3-8-19 (#13/14)  
*\* Denotes a school record*



## TOP-10 HOME GAMES ATTENDANCES (! INCLUDES RUPP ARENA)

1.	23,705	Duke !	12/22/13
2.	22,075	Baylor !	11/17/14
3.	18,488	DePaul !	12/07/12
4.	17,150	Duke !	12/20/15
5.	14,508	Duke !	12/08/11
6.	14,425	Louisville !	12/10/15
7.	13,689	Tennessee !	01/26/06
8.	10,622	Old Dominion	02/05/83
9.	10,390	Rutgers !	01/12/80
10.	10,192	Louisville !	12/28/06

## TOP-10 MEMORIAL COLISEUM ATTENDANCES

1.	10,622	Old Dominion	02/06/83
2.	8,429	Tennessee	01/29/04
3.	8,223	Auburn	02/18/83
4.	8,200	Tennessee	02/09/83
5.	8,130	Tennessee	01/23/00
6.	7,965	Tennessee	03/03/13
7.	7,963	Louisville	12/11/13
8.	7,961	Tennessee	01/12/12
9.	7,951	Louisville	12/04/11
10.	7,888	Florida	01/22/12

## HOME COURT WINNING STREAKS (INCLUDES RUPP ARENA)

Games	Began	Ended	
1.	34	Feb. 13, 2011	Feb. 3, 2013
2.	30	Feb. 12, 1980	Jan. 31, 1982
3.	25	March 19, 2009	Jan. 9, 2010
4.	19	Feb. 23, 1982	Feb. 9, 1983
5.	14	Jan. 31, 1990	Jan. 27, 1991
6.	13	Jan. 30, 1984	Jan. 13, 1985
	13	March 2, 2014	Jan. 29, 2015
8.	11	Feb. 7, 1987	Jan. 7, 1988
	11	Feb. 10, 1979	Feb. 2, 1980
10.	10	Nov. 19, 2004	Jan. 27, 2005

## KENTUCKY ATTENDANCE AVERAGES LAST 15 YEARS

Year	Total	(Games) Rank	Avg. PG
2003-04	72,533	(14 games) 16th	5,182
2004-05	90,663	(19 games) 20th	4,772
2005-06	77,411	(15 games) 20th	5,161
2006-07	87,943	(15 games) 13th	5,863
2007-08	85,769	(18 games) 23rd	4,756
2008-09	75,194	(17 games) 21st	4,423
2009-10	95,615	(17 games) 14th	5,624
2010-11	95,453	(15 games) 11th	6,364
2011-12	113,068	(18 games) 13th	6,282
2012-13	104,447	(17 games) 11th	6,144
2013-14	121,089*	(18 games) 9th	6,727*
2014-15	108,436	(17 games) 8th	6,379
2015-16	116,164	(18 games) 8th	6,454
2016-17	104,252	(20 games) 14th	5,213
2017-18	82,984	(16 games) 15th	5,187
2018-19	85,807	(18 games) 18th	4,767
2019-20	80,853	(17 games) 19th	4,756

\* - SCHOOL RECORD



## Memorial Coliseum (8,000)

- The Coliseum covers an entire city block and has as much space as a seven-story office building. It currently has a capacity of 8,000.
- The Coliseum was built in 1950 and serves as a memorial to every Kentuckian who lost their life serving their country.
- A massive new LED video board spanning approximately 1,800 square feet with dimensions of 30 feet by 60 feet was installed in Memorial Coliseum in 2018.
- Wildcat fans are passionate about their basketball, that's why UK has ranked in the nation's top 20 and in the SEC's top four in attendance 11 straight years.
- UK averaged 5,186 fans per game in 2017-18 which ranked 15th nationally.
- UK drew 116,164 fans for its home games in 2015-16 the second-highest total attendance in school history.



## Rupp Arena (23,500)

- Rupp Arena is entering its 45th season.
- An awesome structure in sight and scope, the arena is divided into two seating areas. The lower level features 10,000 cushioned theater seats while the upper arena has new chairback seats on the sidelines. The latter can be visually isolated to provide more natural setting for small shows.
- The Wildcats command an exclusive and updated state-of-the-art locker room, while other amenities include six team-size dressing rooms and eight smaller units.
- In 2013-14, UK set the new single-game attendance record when 23,706 fans saw UK face No. 2 Duke in Rupp Arena on Dec. 22, 2013. The attendance marked the largest crowd ever to see a college women's hoops game in the Commonwealth — the previous mark was 22,152 for the first Kentucky-Louisville game played in the KFC Yum! Center on Dec. 5, 2010.
- In 2015-16, Kentucky packed 17,150 fans in Rupp Arena on Dec. 20 against Duke, which was the fourth-largest home crowd in program history. On Dec. 10, the Wildcats had 14,425 fans at the historic arena, which was the sixth-largest home crowd in school history.



## MISCELLANEOUS AND SPECIALTY STATS

### LEADING SCORER

Dre'una Edwards	2
Chasity Patterson	1
Rhyne Howard	1
Blair Green	1

### LEADING REBOUNDER

Dre'una Edwards	4
Olivia Owens	1
Nyah Leveretter	1

### LEADER IN ASSISTS

Robyn Benton	2
Blair Green	2
Chasity Patterson	2
Emma King	1
Dre'una Edwards	1
Rhyne Howard	1

### CHARGES DRAWN

Kentucky	1
McKinney	1
Opponents	1

### 10-SEC. BACKCOURT VIOLATION FORCED

Kentucky	0
Opponent	1

### 5-SEC. OUT-OF-BOUNDS CALLS FORCED

Kentucky	1
Opponent	0

### SHOT CLOCK VIOLATIONS FORCED

Kentucky	3
Opponent	1

### 20-POINT SCORING GAMES

Chasity Patterson	1
Dre'una Edwards	1
Rhyne Howard	1

### 30-POINT SCORING GAMES

Chasity Patterson	1
-------------------	---

### 40-POINT SCORING GAMES

TBD	
-----	--

### DOUBLE-FIGURE SCORING GAMES

Chasity Patterson	3
Dre'una Edwards	4
Robyn Benton	2
Rhyne Howard	2
Blair Green	2
Treasure Hunt	1
KeKe McKinney	1
Olivia Owens	1

### DOUBLE-FIGURE REBOUND GAMES

Dre'una Edwards	3
KeKe McKinney	1

### 20-PLUS REBOUNDING GAMES

TBD	
-----	--

### SEASON DOUBLE-DOUBLES

Dre'una Edwards	3
KeKe McKinney	1

### TECHNICAL FOULS

Kentucky	0
Opponent	0

### UK'S FIRST SUBSTITUTION

Robyn Benton	3
Olivia Owens	2

### FIRST TO SCORE

Blair Green	2
Chasity Patterson	2
Rhyne Howard	1

### JUMP BALLS CONTROLLED

Kentucky	2
Dre'una Edwards	3
Opponent	3

### RUNS OF 10 OR BETTER

Kentucky	6
Opponent	1

### LARGEST HALFTIME LEAD

vs. Murray State	25
------------------	----

### LARGEST HALFTIME LEAD (SEC)

TBD	
-----	--

### LARGEST HALFTIME DEFICIT

vs. Indiana	13
-------------	----

### LARGEST HALFTIME DEFICIT (SEC)

TBD	
-----	--

### LARGEST UK LEAD

vs. Murray State	36
------------------	----

### LARGEST UK WIN

vs. Marshall	34
--------------	----

### LARGEST UK WIN (SEC)

TBD	
-----	--

### LARGEST UK DEFICIT

vs. Indiana	14
-------------	----

### LARGEST UK DEFICIT (SEC)

TBD	
-----	--

### LARGEST UK LOSS

TBD	
-----	--

### LARGEST UK LOSS (SEC)

TBD	
-----	--

### MOST CONSECUTIVE POINTS

vs. Marshall	13 (twice)
--------------	------------

### MOST CONSECUTIVE POINTS (SEC)

TBD	
-----	--

### MOST CONSECUTIVE OPP. POINTS

vs. Indiana	14
-------------	----

### MOST CONSECUTIVE OPP. PTS (SEC)

TBD	
-----	--

### LARGEST LEAD IN 1ST HALF

vs. Murray State	25
------------------	----

### LARGEST DEFICIT IN 1ST HALF

vs. Indiana	14
-------------	----

### LARGEST LEAD IN 2ND HALF

vs. Murray State	36
------------------	----

### LARGEST DEFICIT IN 2ND HALF

vs. Indiana	13
-------------	----

### LARGEST LEAD IN LOSS

TBD	
-----	--

### LARGEST 1ST HALF DEFICIT IN WIN

vs. Indiana	14
-------------	----

### LARGEST 2ND HALF DEFICIT IN WIN

vs. Indiana	13
-------------	----

### LARGEST 1ST HALF DEFICIT IN SEC WIN

TBD	
-----	--

### LARGEST 2ND HALF DEFICIT IN SEC WIN

TBD	
-----	--

### SPECIALTY STATS

PP - Points in the paint; POT - Points off turnovers; 2nd - Second-chance points; FB - Fast break points; BP - Bench points

Opponent	KENTUCKY/OPPONENT				
	PP	POT	2nd	FB	BP
Murray State	28/36	40/14	8/19	17/4	35/14
Belmont	50/28	22/10	13/6	14/8	14/14
Kansas State	24/20	18/7	12/12	9/5	13/19
Indiana	22/42	13/11	2/18	5/8	19/3
Marshall	40/18	18/8	13/4	8/4	22/23
Total	164/144	101/50	48/59	53/29	103/73

### CLUTCH FREE THROWS - INDIVIDUAL/SEASON TOTALS

(final three minutes of regulation and overtime in a six-point game)

Player	FT-FTA	Pct.
KeKe McKinney	2-2	1.000
Dre'una Edwards	2-2	1.000
Rhyne Howard	2-2	1.000
Chasity Patterson	2-2	1.000
TOTAL	8-8	1.000

### LONGEST WINNING STREAK

Nov. 25-Pres.	5
---------------	---

### LONGEST SEC WINNING STREAK

TBD	
-----	--

### LONGEST LOSING STREAK

TBD	
-----	--

### LARGEST ROAD CROWD

at Kansas State	502
-----------------	-----

### LARGEST NEUTRAL CROWD

TBD	
-----	--

# Interim Head Coach KYRA ELZY



@CoachLZ



- Became the eighth head coach in UK women's basketball history as UK AD Mitch Barnhart named her Interim Head Coach on Nov. 12 following the retirement of Matthew Mitchell.
- Has been a huge key to the program's success the last 12 years as she has spent nine seasons on the Kentucky staff. Started as assistant coach from 2008-2010 then associate head coach 2010-2012. Returned to UK in 2016 as the associate head coach.
- In her eight years as an assistant coach at Kentucky, the Wildcats have been to the NCAA Tournament six times, including two NCAA Elite Eights. UK won the SEC Regular Season Championship in 2012 - only its second in program history. UK has had a winning season in seven of those eight seasons, including six 20-win seasons and six 10+ wins in league play.
- As an assistant at UK, Elzy helped UK win 181 games, including 78 league games and 23 victories over ranked teams.
- At Kentucky, Elzy has coached three SEC Player of the Year (Victoria Dunlap, A'dia Mathies, Rhyne Howard), three SEC Freshman of the Year (A'dia Mathies, Brianna Goss, Rhyne Howard), one SEC Defensive Player of the Year (Victoria Dunlap), two SEC 6th Woman of the Year (Keyla Snowden, Chasity Patterson), two SEC Scholar-Athletes of the Year (Alyssa Rice, Maci Morris) and her players have earned 39 All-SEC honors overall.
- Elzy married Dexter Lander in August 2012 and the couple have one son Jackson, who was born in 2016.

### DID YOU KNOW?

- Kyra Elzy is in the Kentucky High School Basketball Hall of Fame for her storied career at Oldham County High School. During her high school days, she was a two-time All-American selection by Parade Magazine and Street & Smith and considered by some to be the best high school basketball player in Kentucky history. She led her Oldham County team to two KHSAA regional titles and a semifinal appearance in the 1993 KHSAA Sweet 16. Overall, she scored 3,000 points with 1,700 rebounds, 449 assists and 516 steals over a stellar career.
- An all-around athlete, Kyra also saw success in cross country and track and field where she was a state champion in the 400-meter dash as a junior in high school.
- Elzy holds a bachelor's degree in psychology from Tennessee in 1999 and a master's degree in cultural studies and education with an emphasis in sports psychology from UT in 2001.
- As a student-athlete at UT from 1996-2001, Elzy's game excelled under Hall of Famer Pat Summitt. A four-year letterwinner, Elzy was a member of two national championship teams (1997, 1998), a national runner-up squad (2000), four SEC regular-season championships (1998, 1999, 2000, 2001) and three SEC Tournament titles (1998, 1999, 2000).
- During her time in Knoxville, she played in 126 games and earned the Holly Warlick Defensive Player of the Year award in 1997 and the Unsung Hero Award in 1998. Elzy became just the fifth freshman in Tennessee history to start her first game as a Lady Vol when she started at guard in the 1996-97 season opener against Austin Peay. She also earned another distinction during her playing career, becoming the first UT player to earn her master's degree while still playing.

### KYRA ELZY YEAR-BY-YEAR AS HEAD COACH

Year	School	Position	Record	SEC	Postseason
2020-21	Kentucky	Interim Head Coach	5-0	0-0	
<b>Total</b>	<b>at UK</b>	<b>Head Coach</b>	<b>5-0 (1.000)</b>		
	<b>vs. SEC</b>	<b>Head Coach</b>	<b>0-0 ( )</b>		
	<b>Overall</b>	<b>Head Coach</b>	<b>5-0 (1.000)</b>		

### KYRA ELZY YEAR-BY-YEAR AS ASSISTANT COACH

Year	School	Position	Record	SEC/Conf.	Postseason
2019-20	Kentucky	Associate Head Coach	22-8	10-6	SEC Tournament SF; NCAA canceled
2018-19	Kentucky	Associate Head Coach	25-8	11-5	SEC Tournament QF, NCAA 2nd Rd.
2017-18	Kentucky	Associate Head Coach	15-17	6-10	SEC Tournament QF
2016-17	Kentucky	Associate Head Coach	22-11	11-5	SEC Tournament SF, NCAA 2nd Rd.
2015-16	Tennessee	Associate Head Coach	22-14	8-8	NCAA Elite Eight
2014-15	Tennessee	Assistant Coach	30-6	15-1	SEC Reg. Season Champ./NCAA Elite Eight
2013-14	Tennessee	Assistant Coach	29-6	13-3	SEC Tournament Champ./NCAA Sweet 16
2012-13	Tennessee	Assistant Coach	27-8	14-3	SEC Reg. Season Champ./NCAA Elite Eight
2011-12	Kentucky	Associate Head Coach	28-7	13-3	SEC Reg. Season Champ./NCAA Elite Eight
2010-11	Kentucky	Associate Head Coach	25-9	11-5	SEC Tournament Finals/NCAA 2nd Rd.
2009-10	Kentucky	Assistant Coach	28-8	11-5	SEC Tournament Finals/NCAA Elite Eight
2008-09	Kentucky	Assistant Coach	16-16	5-9	WNIT Second Round
2007-08	Kansas	Assistant Coach	17-16	4-12	WNIT Third Round
2006-07	Kansas	Assistant Coach	11-20	4-12	Big 12 Tournament 2nd Rd.
2005-06	Kansas	Assistant Coach	17-13	5-11	WNIT First Round
2004-05	Kansas	Assistant Coach	12-16	5-11	Big 12 Tournament 1st Rd.
2003-04	WKU	Assistant Coach	20-14	12-2	Sun Belt Tourn. Runner-up/WNIT Third Rd.
2002-03	WKU	Assistant Coach	22-9	12-2	Sun Belt Tourn. Champ./NCAA 1st Rd.
<b>Total</b>	<b>at UK</b>	<b>Assistant Coach</b>	<b>181-94 (.658)</b>		
	<b>Overall</b>	<b>Assistant Coach</b>	<b>388-206 (.653)</b>		





# ROBYN BENTON

#1 • GUARD • JR • 5-9

CONYERS, GA./GREATER ATLANTA CHRISTIAN/AUBURN

An impact transfer for Kentucky who will add immediate experience and leadership ... Aggressive style of play on both ends of the floor will fit into the Wildcats' system perfectly ... Was a star in high school and All-SEC Freshman Team honoree in 2019 at Auburn ... Increased her performance her sophomore season at Auburn before electing to transfer to Kentucky ... Played 52 career games at Auburn her freshman and sophomore seasons, earning All-SEC Freshman Team honors in 2018-19 ... Played in 32 games and averaged 5.8 points per game while going 35-of-94 from long range and 24-of-34 from the free-throw line with 34 steals as a freshman ... Has been granted a waiver to play immediately by the NCAA.



## 2020-21 (JUNIOR)

In her Kentucky debut against Murray State, Benton recorded 20 minutes, scoring seven points, adding five rebounds, three assists, two steals and a block ... Went 50 percent from the field against Belmont, scoring nine points on 4-of-8 shooting, including a 3-pointer, while also grabbing five rebounds and leading the game with four assists ... Played a season-high 28 minutes at Kansas State, scoring 11 points on 4-of-11 shooting, including a pair of 3-pointers, added five rebounds and three steals ... Made some clutch shots down the stretch against then-No. 13 Indiana, scoring 12 points on 3-of-5 shooting, including 1-of-2 from long range, and 5-of-6 from the line.

## EXTRA STATS ...

	20-21	Career
10+ Points	2	22
15+ Points	0	6
20+ Points	0	1
25+ Points	0	0
30+ Points	0	0
35+ Points	0	0
40+ Points	0	0
Made 3+ 3FG	0	6
10+ Rebs	0	0
Double-dbls	0	0
3+ Assists	3	10
2+ Steals	2	26
Led UK in Pts	0	0
Led UK in Rebs	0	0
Led UK in Asts	2	2
Led UK in Stls	1	1
Led UK in Blks	0	0

## CAREER HIGHS

POINTS:	23 AT MISSOURI, 2/27/20
FGM:	7 AT MISSOURI, 2/27/20
FGA:	17 AT SOUTH CAROLINA, 2/13/20
FTM:	8 AT ALABAMA, 2/9/20
FTA:	8 VS. TENNESSEE, 3/1/20
3FGM:	5 AT ELON, 12/22/18
3FGA:	8 (2X) LAST VS. OLE MISS, 1/23/20
O-REBOUNDS:	4 (5X) LAST VS. SOUTH CAROLINA, 2/13/20
D-REBOUNDS:	4 (2X) LAST AT KANSAS STATE, 12/03/20
TOTAL REBOUNDS:	7 AT ALABAMA, 2/9/20
ASSISTS:	4 VS. BELMONT, 11/29/20
BLOCKS:	2 (2X) LAST VS. MISSISSIPPI STATE, 2/20/20
STEALS:	6 (2X) LAST VS. VANDERBILT, 2/2/20
MINUTES:	38 VS. MISSISSIPPI STATE, 2/20/20

## SEASON HIGHS

POINTS:	12 VS. INDIANA, 12/06/20
FGM:	4 (2X) LAST AT KANSAS STATE, 12/03/20
FGA:	11 AT KANSAS STATE, 12/03/20
FTM:	5 VS. INDIANA, 12/06/20
FTA:	6 VS. INDIANA, 12/06/20
3FGM:	2 AT KANSAS STATE, 12/03/20
3FGA:	7 AT KANSAS STATE, 12/03/20
O-REBOUNDS:	3 VS. BELMONT, 11/29/20
D-REBOUNDS:	4 (2X) LAST AT KANSAS STATE, 12/03/20
TOTAL REBOUNDS:	5 (3X) LAST AT KANSAS STATE, 12/03/20
ASSISTS:	4 VS. BELMONT, 11/29/20
BLOCKS:	1 (2X) LAST VS. INDIANA, 12/06/20
STEALS:	3 AT KANSAS STATE, 12/03/20
MINUTES:	28 AT KANSAS STATE, 12/03/20

SEASON	TEAM	GP-GS	MIN/AVG	Field Goals			3-Point		F-Throws		Rebounds				Scoring					
				FG-FGA	FG%	3FG-FGA	3FG%	FT-FTA	FT%	OFF	DEF	TOT	AVG	PF-FO	AST	TO	BLK	STL	PTS	AVG
2018-19	AUB	32-0	454/14.2	64-167	.383	35-94	.372	24-34	.706	16	26	42	1.3	41-0	18	15	3	34	187	5.8
2019-20	AUB	20-14	532/26.6	66-200	.330	27-85	.318	43-51	.843	35	22	57	2.9	44-0	28	34	10	56	202	10.1
2020-21	UK	5-0	109/21.9	16-39	.410	5-21	.238	10-12	.833	6	12	18	3.6	6-0	12	6	2	5	47	9.4
<b>TOTAL FOR UK</b>		<b>5-0</b>	<b>109/21.9</b>	<b>16-39</b>	<b>.410</b>	<b>5-21</b>	<b>.238</b>	<b>10-12</b>	<b>.833</b>	<b>6</b>	<b>12</b>	<b>18</b>	<b>3.6</b>	<b>6-0</b>	<b>12</b>	<b>6</b>	<b>2</b>	<b>5</b>	<b>47</b>	<b>9.4</b>
<b>TOTAL</b>		<b>57-14</b>	<b>1095/19.2</b>	<b>146-406</b>	<b>.360</b>	<b>67-200</b>	<b>.335</b>	<b>77-97</b>	<b>.794</b>	<b>57</b>	<b>60</b>	<b>117</b>	<b>2.1</b>	<b>91-0</b>	<b>58</b>	<b>55</b>	<b>15</b>	<b>95</b>	<b>436</b>	<b>7.6</b>





# DRE'UNA EDWARDS

#44 • FORWARD • RS-SOPH • 6-2

LAS VEGAS, NEV./LIBERTY HS/UTAH

The 2019 Pac-12 Freshman of the Year after an incredible rookie season at Utah ... Transferred to Kentucky in the spring of 2019 and will sit out the 2019-20 season due to NCAA transfer rules ... Sustained a torn ACL at the end of the 2019 season and is currently recovering from injury ... When healthy, is a difference maker all over the floor for the Wildcats ... Loves to be physical on the inside and can also run the floor and be dynamic on the fast break ... Sat out due to NCAA transfer rules and recovered from injuries.

mullah2dree

lhoopDrea44

## 2020-21 (REDSHIRT SOPHOMORE)

Recorded a double-double against Belmont, scoring a career-high 27 points and tying a career-high 15 boards, leading the game in both categories, also recording three steals ... For the second straight game, earned a double-double at Kansas State on a game-high 16 points and grabbing a game-high 12 rebounds, adding four steals and two assists ... For the third straight game, earned a double-double against then-No. 13 Indiana, earning 14 points and 10 rebounds on 5-of-8 shooting and 2-of-2 from long range ... Scored 13 points on 6-of-7 shooting against Marshall, recorded eight rebounds and a career-high five assists.

## EXTRA STATS ...

	20-21	Career
10+ Points	4	22
15+ Points	2	9
20+ Points	1	4
25+ Points	1	1
Made 3+ 3FG	-	-
10+ Rebs	3	10
Double-dbls	3	10
3+ Assists	1	4
2+ Steals	2	14
Led UK in Pts	2	2
Led UK in Rebs	4	4
Led UK in Asts	1	1
Led UK in Stls	1	1
Led UK in Blks	1	1

## CAREER HIGHS

POINTS:	27 vs. BELMONT, 11/29/20
FGM:	11 vs. BELMONT, 11/29/20
FGA:	19 vs. BELMONT, 11/29/20
FTM:	9 vs. UCLA, 02/10/19
FTA:	9 vs. UCLA, 02/10/19
3FGM:	2(2x) LAST vs. INDIANA, 12/06/20
3FGA:	4 vs. BELMONT, 11/29/20
O-REBOUNDS:	8 vs. BYU, 12/08/18
D-REBOUNDS:	11 vs. ARIZONA, 01/06/19
TOTAL REBOUNDS:	15(2x) LAST vs. BELMONT, 11/29/20
ASSISTS:	5 vs. MARSHALL, 12/09/20
BLOCKS:	3 vs. HAWAII, 12/21/18
STEALS:	4 (2x) LAST AT KANSAS STATE, 12/03/20
MINUTES:	35 (2x) LAST AT KANSAS STATE, 12/03/20

## SEASON HIGHS

POINTS:	27 vs. BELMONT, 11/29/20
FGM:	11 vs. BELMONT, 11/29/20
FGA:	19 vs. BELMONT, 11/29/20
FTM:	3 vs. BELMONT, 11/29/20
FTA:	7 vs. BELMONT, 11/29/20
3FGM:	2(2x) LAST vs. INDIANA, 12/06/20
3FGA:	4 vs. BELMONT, 11/29/20
O-REBOUNDS:	7 AT KANSAS STATE, 12/03/20
D-REBOUNDS:	10(2x) LAST vs. INDIANA, 12/06/20
TOTAL REBOUNDS:	15 vs. BELMONT, 11/29/20
ASSISTS:	5 vs. MARSHALL, 12/09/20
BLOCKS:	1 AT KANSAS STATE, 12/03/20
STEALS:	4 AT KANSAS STATE, 12/03/20
MINUTES:	35 AT KANSAS STATE, 12/03/20

SEASON	TEAM	GP-GS	MIN/AVG	Field Goals		3-Point		F-Throws		Rebounds				Scoring						
				FG-FGA	FG%	3FG-FGA	3FG%	FT-FTA	FT%	OFF	DEF	TOT	AVG	PF-FO	AST	TO	BLK	STL	PTS	AVG
2018-19	Utah	26-26	595/22.9	128-237	.540	0-1	.000	45-59	.763	66	109	175	6.7	63-0	36	58	29	40	301	11.6
2020-21	UK	5-5	115/23.0	30-55	.545	6-9	.667	6-11	.545	15	31	46	9.2	16-0	8	9	1	8	72	14.4
<b>TOTAL FOR UK</b>		<b>5-5</b>	<b>115/23.0</b>	<b>30-55</b>	<b>.545</b>	<b>6-9</b>	<b>.667</b>	<b>6-11</b>	<b>.545</b>	<b>15</b>	<b>31</b>	<b>46</b>	<b>9.2</b>	<b>16-0</b>	<b>8</b>	<b>9</b>	<b>1</b>	<b>8</b>	<b>72</b>	<b>14.4</b>
<b>TOTAL</b>		<b>31-31</b>	<b>710/22.9</b>	<b>158-292</b>	<b>.541</b>	<b>6-10</b>	<b>.600</b>	<b>51-70</b>	<b>.729</b>	<b>81</b>	<b>140</b>	<b>221</b>	<b>7.1</b>	<b>79-0</b>	<b>44</b>	<b>67</b>	<b>30</b>	<b>48</b>	<b>373</b>	<b>12.0</b>



# BLAIR GREEN

#5 • GUARD • JR • 6-0

HARLAN COUNTY, KY./HARLAN COUNTY HS

Impressive in-state prospect that has a strong motor and high basketball IQ ... Athletic, versatile guard that can score from the perimeter but also create off the dribble ... Strong sophomore season improving her scoring total from her freshman campaign ... Averaged 5.8 points and 2.2 rebounds per game adding 30 assists, 17 steals and six blocks ... Hit 22 3-pointers during the year ... Scored 10 or more points six times during the year while she led UK in rebounding and assists once and in blocks three times ... Scored 12 points against Morehead State, adding two rebounds and two steals... Tied her career-high 13 points against Winthrop, adding four rebounds and two steals... Tied a career high with 13 points against Texas A&M, going 5-of-8 from the field and 3-of-5 from the arc ... Led Kentucky in rebounding for the first time in her career against Missouri with seven boards, while adding 11 points hitting two 3s.

 blair.green5

 greenblair32

## 2020-21 (JUNIOR)

Started the season opener against Murray State, tying her career-high 13 points on 5-of-10 shooting, including 3-of-5 3FG, adding three assists, a block and a steal ... Scored nine points and grabbed four rebounds against Belmont ... For the first time in her career, Green led Kentucky on a career-high 17 points against Marshall, going 8-of-13 from the field, while she also added two steals.

### EXTRA STATS ...

	20-21	Career
10+ Points	2	12
15+ Points	1	1
20+ Points	-	-
Made 3+ 3FG	1	3
10+ Rebs	-	-
Double-dbls	-	-
3+ Assists	2	6
2+ Steals	1	9
Led UK in Pts	1	1
Led UK in Rebs	-	1
Led UK in Asts	2	4
Led UK in Stls	1	3
Led UK in Blks	1	8

## CAREER HIGHS

POINTS:	17 vs. MARSHALL, 12/09/20
FGM:	8 vs. MARSHALL, 12/09/20
FGA:	13(2x) LAST vs. MARSHALL, 12/09/20
FTM:	5 vs. MOREHEAD, 11/21/19
FTA:	8 vs. MOREHEAD, 11/21/19
3FGM:	3(3x) LAST vs. MURRAY STATE, 11/25/20
3FGA:	5(5x) LAST vs. MURRAY STATE, 11/25/20
O-REBOUNDS:	3(3x) LAST vs. MURRAY STATE, 11/25/20
D-REBOUNDS:	5 AT MISSOURI, 1/30/20
TOTAL REBOUNDS:	7 AT MISSOURI, 1/30/20
ASSISTS:	5 AT ALABAMA, 1/9/20
BLOCKS:	2 (2X) LAST vs. INDIANA, 12/06/20
STEALS:	3 (2X) LAST AT MISSOURI, 1/30/20
MINUTES:	33 vs. FLORIDA, 01/03/19

## SEASON HIGHS

POINTS:	17 vs. MARSHALL, 12/09/20
FGM:	8 vs. MARSHALL, 12/09/20
FGA:	13 vs. MARSHALL, 12/09/20
FTM:	4 AT KANSAS STATE, 12/03/20
FTA:	4 AT KANSAS STATE, 12/03/20
3FGM:	3 vs. MURRAY STATE, 11/25/20
3FGA:	5 vs. MURRAY STATE, 11/25/20
O-REBOUNDS:	3 vs. MURRAY STATE, 11/25/20
D-REBOUNDS:	3 AT KANSAS STATE, 12/03/20
TOTAL REBOUNDS:	4(2X) LAST vs. BELMONT, 11/29/20
ASSISTS:	3(2X) LAST AT KANSAS STATE, 12/03/20
BLOCKS:	2 vs. INDIANA, 12/06/20
STEALS:	2 vs. MARSHALL, 12/09/20
MINUTES:	32 vs. INDIANA, 12/06/20

SEASON	TEAM	GP-GS	MIN/AVG	Field Goals			3-Point		F-Throws		Rebounds				Scoring					
				FG-FGA	FG%	3FG-FGA	3FG%	FT-FTA	FT%	OFF	DEF	TOT	AVG	PF-FO	AST	TO	BLK	STL	PTS	AVG
2018-19	UK	33-0	581/17.6	72-169	.426	16-44	.364	15-17	.882	14	52	66	2.0	48-1	13	41	8	20	175	5.3
2019-20	UK	30-7	577/19.2	66-176	.375	22-70	.314	19-29	.655	24	41	65	2.2	44-0	30	23	6	17	173	5.8
2020-21	UK	5-5	138/27.6	18-42	.429	6-19	.316	6-6	1.000	5	9	14	2.8	4-0	8	2	3	4	48	9.6
<b>TOTAL</b>		<b>68-12</b>	<b>1296/19.1</b>	<b>156-387</b>	<b>.403</b>	<b>44-133</b>	<b>.331</b>	<b>40-52</b>	<b>.769</b>	<b>43</b>	<b>102</b>	<b>145</b>	<b>2.1</b>	<b>96-1</b>	<b>51</b>	<b>66</b>	<b>17</b>	<b>41</b>	<b>396</b>	<b>5.8</b>



# RHYNE HOWARD

#10 • GUARD • JR • 6-2

CLEVELAND, TENN./BRADLEY CENTRAL HS



Started her time in Lexington as a highly touted recruit from Bradley Central High School in Cleveland, Tenn. ... Spent time in the summer of 2018 playing for USA Basketball's U18 National Team, helping USA win gold and was named the tournament's MVP ... Also won gold for the USA U19 team in the summer of 2019 ... Unanimous national freshman of the year in 2019 after making an immediate impact with her ability to score and incredible size at guard ... Has 1,158 career points and became the second-fastest player in program history to 1,000 when she did it in her 53rd career game ... One of the best seasons in program history in 2019-20, finishing second nationally with 23.4 points per game while leading UK with 6.5 rebounds per game and 3.1 3-pointers per game, which ranked top-10 nationally ... Scored 633 points during the season, which was fifth nationally and tied the fifth most in a season in program history ... Posted a new school record in 3-pointers hit during a season with 84 ... Scored 25 or more points in five straight games (UofL, Cal, South Carolina, Tennessee, Alabama) becoming the first player to accomplish that feat in program history ... First player in program history to score 37+ points in consecutive games and the first to hit seven or more 3s in consecutive games accomplishing both of those vs. Tennessee and at Alabama ... Scored 10+ in 25 games, 15+ in 21 games, 20+ in 21 games, 25+ in 13 games, 30+ in three games, 35+ in two games and 40+ in one game ... Made three or more 3s in 14 games with six double-doubles ... Led UK in scoring 22 times, in rebounding 14 times, in assists 10 times, in steals 15 times and in blocks 13 times.

## EXTRA STATS ...

	20-21	Career
10+ Points	2	53
15+ Points	1	44
20+ Points	1	32
25+ Points	-	18
30+ Points	-	3
35+ Points	-	2
40+ Points	-	1
Made 3+ 3FG	2	28
10+ Rebs	-	12
Double-dbls	-	11
3+ Assists	1	23
2+ Steals	1	34
Led UK in Pts	1	39
Led UK in Rebs	-	33
Led UK in Asts	1	17
Led UK in Stls	-	23
Led UK in Blks	1	23

- 2020-21 AP Preseason First-Team All-American (Unanimous)
- 2020-21 SEC Preseason Player of the Year (league coaches)
- 2020-21 All-SEC Preseason Team (league coaches)
- 2020-21 Cheryl Miller Award Preseason Watch List
- 2020-21 Naismith Trophy Preseason Watch List
- 2020-21 Wade Trophy Preseason Watch List
- 2020-21 Lindy's Preseason All-American

## 2020-21 (JUNIOR)

Led all scorers against then-No. 13 Indiana, earning 22 points on 7-of-14 shooting and 3-of-6 from 3-point range, adding four rebounds, two assists and a steal ... Covered the floor against Marshall, scoring 13 points, including three 3-pointers, while grabbing five boards, dishing out five assists and recording a block and a steal.

## CAREER HIGHS

POINTS:	43 AT ALABAMA, 1/9/20
FGM:	14 AT ALABAMA, 1/9/20
FGA:	27 VS. TENNESSEE, 1/5/20
FTM:	12 VS. SOUTH CAROLINA, 2/23/20
FTA:	14 VS. SOUTH CAROLINA, 2/23/20
3FGM:	7(3X) LAST AT ALABAMA, 1/9/20
3FGA:	14 AT LSU, 1/19/20
O-REBOUNDS:	8 AT LSU, 1/19/20
D-REBOUNDS:	8(4X) LAST VS. TEXAS A&M, 1/16/20
TOTAL REBOUNDS:	15 VS. SACRED HEART, 12/29/18
ASSISTS:	7 VS. VANDERBILT, 01/03/19
BLOCKS:	3(3X) LAST VS. AUSTIN PEAY, 12/01/19
STEALS:	7 VS. RHODE ISLAND, 12/06/18
MINUTES:	40 VS. MISSISSIPPI STATE, 3/7/20

## SEASON HIGHS

POINTS:	22 VS. INDIANA, 12/06/20
FGM:	7 VS. INDIANA, 12/06/20
FGA:	14(2X) LAST VS. INDIANA, 12/06/20
FTM:	5 VS. INDIANA, 12/06/20
FTA:	6 VS. INDIANA, 12/06/20
3FGM:	3(2X) LAST VS. MARSHALL, 12/09/20
3FGA:	7 VS. MARSHALL, 12/09/20
O-REBOUNDS:	2 VS. MARSHALL, 12/09/20
D-REBOUNDS:	5 AT KANSAS STATE, 12/03/20
TOTAL REBOUNDS:	6 AT KANSAS STATE, 12/03/20
ASSISTS:	5 VS. MARSHALL, 12/09/20
BLOCKS:	1 VS. MARSHALL, 12/09/20
STEALS:	2 AT KANSAS STATE, 12/03/20
MINUTES:	38 AT KANSAS STATE, 12/03/20

SEASON	TEAM	GP-GS	MIN/AVG	Field Goals		3-Point		F-Throws		Rebounds				Scoring						
				FG-FGA	FG%	3FG-FGA	3FG%	FT-FTA	FT%	OFF	DEF	TOT	AVG	PF-FO	AST	TO	BLK	STL	PTS	AVG
2018-19	UK	32-32	990/30.9	190-426	.446	74-191	.387	71-105	.676	81	131	212	6.6	86-2	75	78	22	68	525	16.4
2019-20	UK	27-27	844/31.2	212-490	.433	84-220	.382	125-158	.791	63	112	175	6.5	68-0	66	60	29	62	633	23.4
2020-21	UK	3-3	98/32.7	15-39	.385	6-20	.300	7-8	.875	3	12	15	5.0	8-0	8	10	1	4	43	14.3
<b>TOTAL</b>		<b>62-62</b>	<b>1932/31.2</b>	<b>417-955</b>	<b>.437</b>	<b>164-431</b>	<b>.381</b>	<b>203-271</b>	<b>.749</b>	<b>147</b>	<b>255</b>	<b>402</b>	<b>6.5</b>	<b>162-2</b>	<b>149</b>	<b>148</b>	<b>52</b>	<b>134</b>	<b>1201</b>	<b>19.4</b>



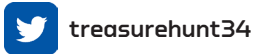


# TREASURE HUNT

#12 • GUARD • FR • 6-2

CHATTANOOGA, TENN./HAMILTON HEIGHTS CHRISTIAN ACADEMY

Athletic, versatile guard that can play multiple positions and score at an extremely high level ... Worked hard on her defense in high school and became a talented defender, which will fit Kentucky's system perfect ... Familiar with several teammates, playing high school basketball with Jazmine Massengill at HHCA and club basketball with Rhyne Howard ... Chose Kentucky over Baylor, South Carolina, Mississippi State and Auburn.



## 2020-21 (FRESHMAN)

In her collegiate debut against Murray State, scored 12 points in just 13 minutes, going 5-of-10 from the field, including scoring a pair of 3-pointers.

## EXTRA STATS ...

	20-21	Career
10+ Points	1	1
15+ Points	0	0
20+ Points	0	0
25+ Points	0	0
30+ Points	0	0
35+ Points	0	0
40+ Points	0	0
Made 3+ 3FG	0	0
10+ Rebs	0	0
Double-dbls	0	0
3+ Assists	0	0
2+ Steals	0	0
Led UK in Pts	0	0
Led UK in Rebs	0	0
Led UK in Asts	0	0
Led UK in Stls	0	0
Led UK in Blks	0	0

## CAREER HIGHS

POINTS:	12 vs. MURRAY STATE, 11/25/20
FGM:	5 vs. MURRAY STATE, 11/25/20
FGA:	10 vs. MURRAY STATE, 11/25/20
FTM:	-
FTA:	1 vs. MARSHALL, 12/09/20
3FGM:	2 vs. MURRAY STATE, 11/25/20
3FGA:	5 vs. MURRAY STATE, 11/25/20
O-REBOUNDS:	1(2x) LAST vs. MARSHALL, 12/09/20
D-REBOUNDS:	2(2x) LAST vs. MARSHALL, 12/09/20
TOTAL REBOUNDS:	3 vs. MARSHALL, 12/09/20
ASSISTS:	2 vs. MARSHALL, 12/09/20
BLOCKS:	-
STEALS:	1 vs. MARSHALL, 12/09/20
MINUTES:	16 vs. MARSHALL, 12/09/20

## SEASON HIGHS

POINTS:	12 vs. MURRAY STATE, 11/25/20
FGM:	5 vs. MURRAY STATE, 11/25/20
FGA:	10 vs. MURRAY STATE, 11/25/20
FTM:	-
FTA:	1 vs. MARSHALL, 12/09/20
3FGM:	2 vs. MURRAY STATE, 11/25/20
3FGA:	5 vs. MURRAY STATE, 11/25/20
O-REBOUNDS:	1(2x) LAST vs. MARSHALL, 12/09/20
D-REBOUNDS:	2(2x) LAST vs. MARSHALL, 12/09/20
TOTAL REBOUNDS:	3 vs. MARSHALL, 12/09/20
ASSISTS:	2 vs. MARSHALL, 12/09/20
BLOCKS:	-
STEALS:	1 vs. MARSHALL, 12/09/20
MINUTES:	16 vs. MARSHALL, 12/09/20

SEASON	TEAM	GP-GS	MIN/AVG	Field Goals		3-Point		F-Throws		Rebounds				Scoring						
				FG-FGA	FG%	3FG-FGA	3FG%	FT-FTA	FT%	OFF	DEF	TOT	AVG	PF-FO	AST	TO	BLK	STL	PTS	AVG
2020-21	UK	5-0	50/10.1	6-18	.333	2-9	.222	0-1	.000	2	5	7	1.4	4-0	3	5	0	1	14	2.8
<b>TOTAL</b>		<b>5-0</b>	<b>50/10.1</b>	<b>6-18</b>	<b>.333</b>	<b>2-9</b>	<b>.222</b>	<b>0-1</b>	<b>.000</b>	<b>2</b>	<b>5</b>	<b>7</b>	<b>1.4</b>	<b>4-0</b>	<b>3</b>	<b>5</b>	<b>0</b>	<b>1</b>	<b>14</b>	<b>2.8</b>

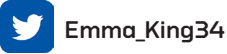


# EMMA KING

#34 • GUARD • SOPH • 5-10

STANFORD, KY./LINCOLN COUNTY HS

Impressive shooting guard that improved as the season went on last year ... Can also create off the dribble and score in a variety of ways ... Born and raised in the Commonwealth of Kentucky and has always been a Kentucky fan, dreaming of playing for the Wildcats ... Played in 15 games during the season scoring 21 points with six assists, three rebounds and two steals ... Hit four 3s during the year and seven total field goals ... In her career debut against Mount St. Mary's, scored seven points, hitting two 3s ... Recorded her first career steal at Missouri and also had one at Ole Miss ... Also hit a 3 vs. Charlotte and vs. Samford.



## 2020-21 (SOPHOMORE)

Made the first start in her career in season opener against Murray State, playing for 16 minutes, forcing three assists, one rebound and one steal.

### EXTRA STATS ...

	20-21	Career
10+ Points	0	0
15+ Points	0	0
20+ Points	0	0
25+ Points	0	0
30+ Points	0	0
35+ Points	0	0
40+ Points	0	0
Made 3+ 3FG	0	0
10+ Rebs	0	0
Double-dbls	0	0
3+ Assists	1	1
2+ Steals	0	0
Led UK in Pts	0	0
Led UK in Rebs	0	0
Led UK in Asts	1	1
Led UK in Stls	0	0
Led UK in Blks	0	0

### CAREER HIGHS

POINTS:	7 vs. MOUNT ST. MARY'S, 11/05/19
FGM:	2 vs. MOUNT ST. MARY'S, 11/05/19
FGA:	6 vs. MURRAY STATE, 11/25/20
FTM:	1(3x) LAST vs. WINTHROP, 12/11/19
FTA:	2(2x) LAST vs. WINTHROP, 12/11/19
3FGM:	2 vs. MOUNT ST. MARY'S, 11/05/19
3FGA:	5 vs. MOUNT ST. MARY'S, 11/05/19
O-REBOUNDS:	-
D-REBOUNDS:	3 vs. BELMONT, 11/29/20
TOTAL REBOUNDS:	3 vs. BELMONT, 11/29/20
ASSISTS:	3 vs. MURRAY STATE, 11/25/20
BLOCKS:	-
STEALS:	1(4x) LAST vs. BELMONT, 11/29/20
MINUTES:	17 vs. WINTHROP, 12/11/19

### SEASON HIGHS

POINTS:	-
FGM:	-
FGA:	6 vs. MURRAY STATE, 11/25/20
FTM:	-
FTA:	-
3FGM:	-
3FGA:	3 vs. MURRAY STATE, 11/25/20
O-REBOUNDS:	-
D-REBOUNDS:	3 vs. BELMONT, 11/29/20
TOTAL REBOUNDS:	3 vs. BELMONT, 11/29/20
ASSISTS:	3 vs. MURRAY STATE, 11/25/20
BLOCKS:	-
STEALS:	1(2x) LAST vs. BELMONT, 11/29/20
MINUTES:	16 vs. MURRAY STATE, 11/25/20

SEASON	TEAM	GP-GS	MIN/AVG	Field Goals		3-Point		F-Throws		Rebounds				Scoring						
				FG-FGA	FG%	3FG-FGA	3FG%	FT-FTA	FT%	OFF	DEF	TOT	AVG	PF-FO	AST	TO	BLK	STL	PTS	AVG
2019-20	UK	15-0	105/7.0	7-31	.226	4-19	.211	3-5	.600	0	3	3	0.2	11-0	6	4	0	2	21	1.4
2020-21	UK	2-2	29/14.6	0-10	.000	0-4	.000	0-0	.000	0	4	4	2.0	2-0	3	2	0	2	0	0.0
<b>TOTAL</b>		<b>17-2</b>	<b>134/7.9</b>	<b>7-41</b>	<b>.171</b>	<b>4-23</b>	<b>.174</b>	<b>3-5</b>	<b>.600</b>	<b>0</b>	<b>7</b>	<b>7</b>	<b>0.4</b>	<b>13-0</b>	<b>9</b>	<b>6</b>	<b>0</b>	<b>4</b>	<b>21</b>	<b>1.2</b>



# NYAH LEVERETTER

#21 • FORWARD • FR • 6-3

BLYTHEWOOD, S.C./WESTWOOD HS

Strong, tall, athletic forward that is the perfect frontcourt prospect for Kentucky ... Elite size should make an immediate impact on the team this season ... Star volleyball player in high school as well with over 700 career kills, adding 577 career blocks and 53 aces over her four-year career ... Coaches have raced about her high motor and practice and think she is the perfect player for Kentucky with her combination of size and ability to run the floor ... Picked Kentucky over Florida and Clemson among others.



## 2020-21 (FRESHMAN)

In her collegiate debut against Murray State, recorded five boards and two blocks in 17 minutes ... Led Kentucky against Marshall, grabbing a career-high eight boards.

### EXTRA STATS ...

	20-21	Career
10+ Points	0	0
15+ Points	0	0
20+ Points	0	0
25+ Points	0	0
30+ Points	0	0
35+ Points	0	0
40+ Points	0	0
Made 3+ 3FG	0	0
10+ Rebs	0	0
Double-dbls	0	0
3+ Assists	0	0
2+ Steals	0	0
Led UK in Pts	0	0
Led UK in Rebs	1	1
Led UK in Asts	0	0
Led UK in Stls	0	0
Led UK in Blks	1	1

### CAREER HIGHS

POINTS:	4 vs. MARSHALL, 12/09/20
FGM:	2 vs. MARSHALL, 12/09/20
FGA:	3 vs. MARSHALL, 12/09/20
FTM:	1 vs. MURRAY STATE, 11/25/20
FTA:	2(2x) LAST vs. MARSHALL, 12/09/20
3FGM:	-
3FGA:	-
O-REBOUNDS:	4 vs. MARSHALL, 12/09/20
D-REBOUNDS:	4 vs. MARSHALL, 12/09/20
TOTAL REBOUNDS:	8 vs. MARSHALL, 12/09/20
ASSISTS:	-
BLOCKS:	2 vs. MURRAY STATE, 11/25/20
STEALS:	-
MINUTES:	22 vs. MARSHALL, 12/09/20

### SEASON HIGHS

POINTS:	4 vs. MARSHALL, 12/09/20
FGM:	2 vs. MARSHALL, 12/09/20
FGA:	3 vs. MARSHALL, 12/09/20
FTM:	1 vs. MURRAY STATE, 11/25/20
FTA:	2(2x) LAST vs. MARSHALL, 12/09/20
3FGM:	-
3FGA:	-
O-REBOUNDS:	4 vs. MARSHALL, 12/09/20
D-REBOUNDS:	4 vs. MARSHALL, 12/09/20
TOTAL REBOUNDS:	8 vs. MARSHALL, 12/09/20
ASSISTS:	-
BLOCKS:	2 vs. MURRAY STATE, 11/25/20
STEALS:	-
MINUTES:	22 vs. MARSHALL, 12/09/20

SEASON	TEAM	GP-GS	MIN/AVG	Field Goals			3-Point		F-Throws		Rebounds				Scoring					
				FG-FGA	FG%	3FG-FGA	3FG%	FT-FTA	FT%	OFF	DEF	TOT	AVG	PF-FO	AST	TO	BLK	STL	PTS	AVG
2020-21	UK	3-0	44/14.7	3-5	.600	0-0	.000	1-4	.250	7	7	14	4.7	7-0	0	1	2	0	7	2.3
<b>TOTAL</b>		<b>3-0</b>	<b>44/14.7</b>	<b>3-5</b>	<b>.600</b>	<b>0-0</b>	<b>.000</b>	<b>1-4</b>	<b>.250</b>	<b>7</b>	<b>7</b>	<b>14</b>	<b>4.7</b>	<b>7-0</b>	<b>0</b>	<b>1</b>	<b>2</b>	<b>0</b>	<b>7</b>	<b>2.3</b>



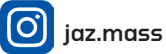


# JAZMINE MASSENGILL

#13 • GUARD • JR • 6-0

CHATTANOOGA, TENN./HAMILTON HEIGHTS/TENNESSEE

Brings a wealth of Southeastern Conference experience to Lexington after spending the last two seasons at Tennessee, where she was a key reserve her freshman season and a starter her sophomore season ... Athletic guard that has great size and floor vision ... One of three UK players from the Chattanooga area, playing high school basketball with Treasure Hunt while she played AAU with Rhyne Howard ... Averaged 6.5 points per game, 4.7 rebounds per game and 4.1 assists per game as a sophomore, hitting 40 percent from the field and tripled her output from long range after hitting only a handful of 3s as a freshman ... Finished second on the team with 128 assists while adding 23 blocks and 27 steals ... Can share the ball with the best in the nation, notching an assist in every game but one in 2019-20, including four or more assists in 14 games ... Dished out 10 or more assists twice as a sophomore, including a career-best 12 against Missouri ... All-around ability showed triple- or quadruple-double potential in 19-20 as she performed well against some of the best competition ... Against UCONN, she earned 11 points and led the Lady Vols with five assists and three steals, while she had nine points, six assists, four rebounds and two steals against Texas A&M



## EXTRA STATS ...

	20-21	Career
10+ Points	0	2
15+ Points	0	0
20+ Points	0	0
25+ Points	0	0
30+ Points	0	0
35+ Points	0	0
40+ Points	0	0
Made 3+ 3FG	0	0
10+ Rebs	0	0
Double-dbls	0	0
3+ Assists	0	5
2+ Steals	0	10
Led UK in Pts	0	0
Led UK in Rebs	0	0
Led UK in Asts	0	0
Led UK in Stls	0	0
Led UK in Blks	0	0

## 2020-21 (REDSHIRT JUNIOR)

Will miss the 2020-21 season due to NCAA transfer rules.

## CAREER HIGHS

POINTS:	16 vs. COLORADO STATE, 12/11/19
FGM:	7 vs. COLORADO STATE, 12/11/19
FGA:	13 vs. TEXAS, 12/08/19
FTM:	6 vs. LSU, 1/27/19
FTA:	8 vs. STETSON, 11/19/19
3FGM:	2, 2X, LAST AT UCONN, 1/23/20
3FGA:	6 AT UCONN, 1/23/20
O-REBOUNDS:	4 vs. PRESBYTERIAN, 11/11/18
D-REBOUNDS:	12 AT NOTRE DAME, 11/11/19
TOTAL REBOUNDS:	13 AT NOTRE DAME, 11/11/19
ASSISTS:	12 vs. MISSOURI, 1/2/20
BLOCKS:	5 vs. ETSU, 12/21/18
STEALS:	4 vs. FLORIDA A&M, 11/18/18
MINUTES:	38 vs. MISSISSIPPI STATE, 2/6/20

## SEASON HIGHS

POINTS:	
FGM:	
FGA:	
FTM:	
FTA:	
3FGM:	
3FGA:	
O-REBOUNDS:	
D-REBOUNDS:	
TOTAL REBOUNDS:	
ASSISTS:	
BLOCKS:	
STEALS:	
MINUTES:	

SEASON	TEAM	GP-GS	MIN/AVG	Field Goals			3-Point		F-Throws		Rebounds				Scoring					
				FG-FGA	FG%	3FG-FGA	3FG%	FT-FTA	FT%	OFF	DEF	TOT	AVG	PF-FO	AST	TO	BLK	STL	PTS	AVG
2018-19	UT	32-1	570/17.8	44-132	.333	4-26	.154	16-30	.533	44	65	109	3.4	26-0	42	30	14	27	108	3.4
2019-20	UT	31-30	877/28.3	77-193	.399	15-53	.283	34-45	.756	26	119	145	4.7	32-0	128	49	23	27	203	6.5
<b>TOTAL FOR UK</b>		<b>0-0</b>	<b>0/0.0</b>	<b>0-0</b>	<b>.000</b>	<b>0-0</b>	<b>.000</b>	<b>0-0</b>	<b>.000</b>	<b>0</b>	<b>0</b>	<b>0</b>	<b>0.0</b>	<b>0-0</b>	<b>0</b>	<b>0</b>	<b>0</b>	<b>0</b>	<b>0</b>	<b>0</b>
<b>TOTAL</b>		<b>63-31</b>	<b>1446/23.0</b>	<b>121-325</b>	<b>.372</b>	<b>19-79</b>	<b>.241</b>	<b>50-75</b>	<b>.667</b>	<b>70</b>	<b>184</b>	<b>254</b>	<b>4.0</b>	<b>58-0</b>	<b>170</b>	<b>79</b>	<b>37</b>	<b>54</b>	<b>311</b>	<b>4.9</b>



# KEKE MCKINNEY

#3 • FORWARD • SR • 6-1

KNOXVILLE, TENN./FULTON HS

ke\_mckinney

ke\_baby05

All-around athlete that can play multiple positions and really defend the post or the perimeter ... Loves to play fast and get up and down the floor ... Became a vocal leader on the team in her rookie season ... Very active on the glass and can finish through contact in the post ... Chose Kentucky over Tennessee and Mississippi State ... Great 2019-20 season for the Wildcats in the post, finishing with 6.5 points and 4.7 rebounds per game ... Led Kentucky in blocks with 42, while adding 34 assists and 23 steals ... Hit 23 3-pointers during the year ... Scored 10 or more points four times and made three or more 3s twice ... Had one double-double while leading UK in rebounding seven times and in blocks 18 times ... Led Kentucky with a career-high four assists and four blocked shots at Middle Tennessee, added six rebounds ... Recorded her first double-double in her career with 10 points and 10 rebounds against Stetson, added four assists and two blocks.

## EXTRA STATS ...

	20-21	Career
10+ Points	1	11
15+ Points	-	-
20+ Points	-	-
Made 3+ 3FG	-	2
10+ Rebs	1	4
Double-dbls	1	2
3+ Assists	1	9
2+ Steals	2	18
Led UK in Pts	-	-
Led UK in Rebs	-	22
Led UK in Asts	-	1
Led UK in Stls	-	8
Led UK in Blks	3	40

## 2020-21 (SENIOR)

In the season opener against Murray State, McKinney scored six points and posted three rebounds, four steals, two blocks and two assists ... Rallied a double-double against Belmont, scoring 10 points and grabbing 10 boards, also recording two assists and a steal ... Recorded 33 minutes at Kansas State, grabbing eight boards and two steals ... Grabbed five rebounds against then-No. 13 Indiana, dishing out three assists and blocking two shots ... Did not compete against Marshall due to a shoulder injury.

## CAREER HIGHS

POINTS:	13(2X) LAST VS. AUBURN, 1/27/20
FGM:	6(3X) LAST VS. AUBURN, 1/27/20
FGA:	12 VS. SOUTH CAROLINA, 01/21/18
FTM:	4(2X) LAST VS. ALABAMA ST., 11/07/18
FTA:	5 VS. AUSTIN PEAY, 12/01/19
3FGM:	3(2X) LAST VS. SOUTH CAROLINA, 2/23/20
3FGA:	7 VS. SOUTH CAROLINA, 2/23/20
O-REBOUNDS:	6 VS. VIRGINIA, 11/15/18
D-REBOUNDS:	9 AT ARKANSAS, 01/29/18
TOTAL REBOUNDS:	12 AT ARKANSAS, 01/29/18
ASSISTS:	4(4X) LAST VS. MISSISSIPPI STATE, 2/16/20
BLOCKS:	5(2X) LAST VS. ALABAMA, 2/6/20
STEALS:	4(2X) LAST VS. MURRAY STATE, 11/25/20
MINUTES:	38 VS. SOUTH CAROLINA, 2/23/20

## SEASON HIGHS

POINTS:	10 VS. BELMONT, 11/29/20
FGM:	4 VS. BELMONT, 11/29/20
FGA:	8 VS. BELMONT, 11/29/20
FTM:	2(2X) LAST VS. INDIANA, 12/06/20
FTA:	4 VS. BELMONT, 11/29/20
3FGM:	-
3FGA:	1(2X) LAST VS. BELMONT, 11/29/20
O-REBOUNDS:	4(2X) LAST AT KANSAS STATE, 12/03/20
D-REBOUNDS:	6 VS. BELMONT, 11/29/20
TOTAL REBOUNDS:	10 VS. BELMONT, 11/29/20
ASSISTS:	3 VS. INDIANA, 12/06/20
BLOCKS:	2(2X) LAST VS. INDIANA, 12/06/20
STEALS:	4 VS. MURRAY STATE, 11/25/20
MINUTES:	35 VS. INDIANA, 12/06/20

SEASON	TEAM	GP-GS	MIN/AVG	Field Goals		3-Point		F-Throws		Rebounds				Scoring						
				FG-FGA	FG%	3FG-FGA	3FG%	FT-FTA	FT%	OFF	DEF	TOT	AVG	PF-FO	AST	TO	BLK	STL	PTS	AVG
2017-18	UK	30-17	601/20.0	52-136	.382	13-48	.271	23-30	.767	45	65	110	3.7	61-2	20	45	14	20	140	4.7
2018-19	UK	31-28	754/24.3	52-157	.331	11-55	.200	18-32	.563	62	90	152	4.9	62-0	34	40	29	33	133	4.3
2019-20	UK	26-23	758/29.1	67-137	.489	23-55	.418	11-22	.500	50	72	122	4.7	49-0	34	34	42	23	168	6.5
2020-21	UK	4-4	130/32.4	9-22	.409	0-2	.000	5-8	.625	11	15	26	6.5	12-0	8	3	5	7	23	5.8
<b>TOTAL</b>		<b>91-72</b>	<b>2243/24.6</b>	<b>180-452</b>	<b>.398</b>	<b>47-160</b>	<b>.294</b>	<b>57-92</b>	<b>.620</b>	<b>168</b>	<b>242</b>	<b>410</b>	<b>4.5</b>	<b>184-2</b>	<b>96</b>	<b>122</b>	<b>90</b>	<b>83</b>	<b>464</b>	<b>5.1</b>

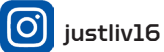


# OLIVIA OWENS

#00 • CENTER • RS-SOPH • 6-4

ALBANY, N.Y./NISKAYUNA HS/MARYLAND

A five-star center and one of the best post prospects in the nation coming out of high school that will add elite size and strength in the post to the UK roster ... Transfers to Kentucky after two seasons at Maryland where she sat out her sophomore season due to medical issues ... Was a decorated player in high school and should make an immediate impact on the team when eligible ... Has received a waiver from the NCAA to play immediately and will compete for UK in 2020-21.



## 2020-21 (REDSHIRT SOPHOMORE)

Made her Kentucky debut in season opener against Murray State, leading the team with nine rebounds and scoring seven points ... Scored a career-high 10 points against Marshall, going 4-of-6 from the field, and grabbed five rebounds.

EXTRA STATS ...		
	20-21	Career
10+ Points	1	1
15+ Points	0	0
20+ Points	0	0
25+ Points	0	0
30+ Points	0	0
35+ Points	0	0
40+ Points	0	0
Made 3+ 3FG	0	0
10+ Rebs	0	0
Double-dbls	0	0
3+ Assists	0	0
2+ Steals	0	0
Led UK in Pts	0	0
Led UK in Rebs	1	1
Led UK in Asts	0	0
Led UK in Stls	0	0
Led UK in Blks	1	1

CAREER HIGHS	
POINTS:	10 vs. MARSHALL, 12/09/20
FGM:	4 vs. MARSHALL, 12/09/20
FGA:	6(2x) LAST vs. MARSHALL, 12/09/20
FTM:	2 vs. MARSHALL, 12/09/20
FTA:	2(4x) LAST vs. MARSHALL, 12/09/20
3FGM:	-
3FGA:	-
O-REBOUNDS:	2 vs. COPPIN STATE, 11/9/18
D-REBOUNDS:	8 vs. MURRAY STATE, 11/25/20
TOTAL REBOUNDS:	9 vs. MURRAY STATE, 11/25/20
ASSISTS:	1(4x) LAST vs. MARSHALL, 12/09/20
BLOCKS:	2 vs. BELMONT, 11/29/20
STEALS:	1 (2x) LAST vs. UMBC, 12/2/18
MINUTES:	21 vs. MARSHALL, 12/09/20

SEASON HIGHS	
POINTS:	10 vs. MARSHALL, 12/09/20
FGM:	4 vs. MARSHALL, 12/09/20
FGA:	6(2x) LAST vs. MARSHALL, 12/09/20
FTM:	2 vs. MARSHALL, 12/09/20
FTA:	2(3x) LAST vs. MARSHALL, 12/09/20
3FGM:	-
3FGA:	1 AT KANSAS STATE, 12/03/20
O-REBOUNDS:	1(3x) LAST vs. MARSHALL, 12/09/20
D-REBOUNDS:	8 vs. MURRAY STATE, 11/25/20
TOTAL REBOUNDS:	9 vs. MURRAY STATE, 11/25/20
ASSISTS:	1(3x) LAST vs. MARSHALL, 12/09/20
BLOCKS:	2 vs. BELMONT, 11/29/20
STEALS:	-
MINUTES:	21 vs. MARSHALL, 12/09/20

SEASON	TEAM	GP-GS	MIN/AVG	Field Goals				3-Point		F-Throws		Rebounds					Scoring			
				FG-FGA	FG%	3FG-FGA	3FG%	FT-FTA	FT%	OFF	DEF	TOT	AVG	PF-FO	AST	TO	BLK	STL	PTS	AVG
2018-19	MD	16-0	67/4.2	11-20	.550	0-0	.000	2-5	.400	8	12	20	1.3	24-1	1	8	2	2	24	1.5
2020-21	UK	5-1	73/14.6	12-21	.571	0-1	.000	4-6	.667	3	16	19	3.8	11-1	3	8	2	0	28	5.6
<b>TOTAL FOR UK</b>		<b>5-1</b>	<b>73/14.6</b>	<b>12-21</b>	<b>.571</b>	<b>0-1</b>	<b>.000</b>	<b>4-6</b>	<b>.667</b>	<b>3</b>	<b>16</b>	<b>19</b>	<b>3.8</b>	<b>11-1</b>	<b>3</b>	<b>8</b>	<b>2</b>	<b>0</b>	<b>28</b>	<b>5.6</b>
<b>TOTAL</b>		<b>21-1</b>	<b>140/6.7</b>	<b>23-41</b>	<b>.561</b>	<b>0-1</b>	<b>.000</b>	<b>6-11</b>	<b>.545</b>	<b>11</b>	<b>28</b>	<b>39</b>	<b>1.9</b>	<b>35-2</b>	<b>4</b>	<b>16</b>	<b>4</b>	<b>2</b>	<b>52</b>	<b>2.5</b>





# CHASITY PATTERSON

#15 • GUARD • SR • 5-5

HOUSTON, TEXAS/NORTH SHORE/TEXAS

chazzthereal

chazzthereal15

The top ranked point guard in the class of 2017 according to ESPN.com and the Big 12 Preseason Freshman of the Year at Texas in 2017-18 ... Elite guard who can score multiple ways and also defend ... Fast and explosive on both ends of the court ... Sat out the spring and fall semesters of 2019 and played her first game at UK vs. Cal ... Joined the team in December 2018 and practiced with the team in the spring of 2019 ... Busted onto the scene last year as the SEC 6th Player of the Year by league coaches after playing in 19 games and averaging 11.5 points per game while hitting 44.4 percent from the field and 30.7 percent from long range ... Went 37-of-44 from the free-throw line ... Had 25 steals and 29 assists during the year ... Scored 10 or more points in 10 games, 15 or more in six games, 20 or more in three games and two games of 25 or more ... Had two or more steals in seven games and led UK in steals five times ... Led UK in scoring twice and in assists five times ... Saw her first career playing time for the Wildcats at Cal, coming off the bench to play 24 minutes, scoring nine points and leading the team with four steals... Scored 15 points at South Carolina and led UK with two assists and three steals ... Scored a career-best 32 points at Arkansas on 11-of-17 FG and 5-of-7 3FG, adding four rebounds.

## EXTRA STATS ...

	20-21	Career
10+ Points	4	15
15+ Points	1	7
20+ Points	1	4
25+ Points	1	3
30+ Points	1	2
10+ Rebs	-	-
Made 3+ 3FG	-	2
Double-dbls	-	-
3+ Assists	2	6
2+ Steals	3	10
Led UK in Pts	1	3
Led UK in Rebs	-	1
Led UK in Asts	2	7
Led UK in Stls	3	8
Led UK in Blks	-	2

## 2020-21 (SENIOR)

In the season opener against Murray State, Patterson scored a game-high 30 points on 8-of-13 shooting, 2-of-4 3FG and 12-of-13 FT, while also recording a career-high six rebounds and eight steals ... Became the first UK player since A'dia Mathies in November 2011 to record eight or more steals in a game ... Played for 38 minutes against Belmont, scoring 10 points on 5-of-12 shooting, while forcing three steals and dishing out two assists... At Kansas State, scored 11 points on 5-of-11 shooting and dished out two assists ... Produced a solid stat line on the floor against then-No. 13 Indiana, scoring 13 points on 5-of-12 shooting and 1-of-1 from long range, while also grabbing a career-high seven rebounds and dishing out a career-high six assists, forcing two steals.

## CAREER HIGHS

POINTS:	32 AT ARKANSAS, 2/9/20
FGM:	11 AT ARKANSAS, 2/9/20
FGA:	19 VS. FLORIDA, 2/2/20
FTM:	12 VS. MURRAY STATE, 11/25/20
FTA:	13 VS. MURRAY STATE, 11/25/20
3FGM:	5 AT ARKANSAS, 2/9/20
3FGA:	8 VS. ALABAMA, 2/6/20
O-REBOUNDS:	3(2X) LAST VS. MURRAY STATE, 11/25/20
D-REBOUNDS:	5(2X) LAST VS. INDIANA, 12/06/20
TOTAL REBOUNDS:	7 VS. INDIANA, 12/06/20
ASSISTS:	6 VS. INDIANA, 12/06/20
BLOCKS:	1(5X) LAST VS. MISSISSIPPI STATE, 3/7/20
STEALS:	8 VS. MURRAY STATE, 11/25/20
MINUTES:	38 VS. BELMONT, 11/29/20

## SEASON HIGHS

POINTS:	30 VS. MURRAY STATE, 11/25/20
FGM:	8 VS. MURRAY STATE, 11/25/20
FGA:	13 VS. MURRAY STATE, 11/25/20
FTM:	12 VS. MURRAY STATE, 11/25/20
FTA:	13 VS. MURRAY STATE, 11/25/20
3FGM:	2 VS. MURRAY STATE, 11/25/20
3FGA:	4(2X) LAST AT KANSAS STATE, 12/03/20
O-REBOUNDS:	3 VS. MURRAY STATE, 11/25/20
D-REBOUNDS:	5 VS. INDIANA, 12/06/20
TOTAL REBOUNDS:	7 VS. INDIANA, 12/06/20
ASSISTS:	6 VS. INDIANA, 12/06/20
BLOCKS:	-
STEALS:	8 VS. MURRAY STATE, 11/25/20
MINUTES:	38 VS. BELMONT, 11/29/20

SEASON	TEAM	GP-GS	MIN/AVG	Field Goals		3-Point		F-Throws		Rebounds				Scoring						
				FG-FGA	FG%	3FG-FGA	3FG%	FT-FTA	FT%	OFF	DEF	TOT	AVG	PF-FO	AST	TO	BLK	STL	PTS	AVG
2017-18	UT	24-0	182/7.6	25-61	.410	6-27	.222	11-17	.647	2	26	28	1.2	19-0	15	14	3	5	67	2.8
2018-19	UT	1-0	9/9.0	2-4	.500	1-2	.500	1-2	.500	0	2	2	2.0	0-0	1	0	0	1	6	6.0
2019-20	UK	19-0	367/19.3	79-178	.444	23-75	.307	37-44	.841	11	30	41	2.2	38-0	29	31	2	25	218	11.5
2020-21	UK	5-5	150/30.0	24-53	.453	4-15	.267	16-20	.800	8	11	19	3.8	4-0	14	5	0	15	68	13.6
<b>TOTAL FOR UK</b>		<b>24-5</b>	<b>517/21.6</b>	<b>103-231</b>	<b>.446</b>	<b>27-90</b>	<b>.300</b>	<b>53-64</b>	<b>.828</b>	<b>19</b>	<b>41</b>	<b>60</b>	<b>2.5</b>	<b>42-0</b>	<b>43</b>	<b>36</b>	<b>2</b>	<b>40</b>	<b>286</b>	<b>11.9</b>
<b>TOTAL</b>		<b>49-5</b>	<b>708/14.5</b>	<b>130-296</b>	<b>.439</b>	<b>34-119</b>	<b>.286</b>	<b>65-83</b>	<b>.783</b>	<b>21</b>	<b>69</b>	<b>90</b>	<b>1.8</b>	<b>61-0</b>	<b>59</b>	<b>50</b>	<b>5</b>	<b>46</b>	<b>359</b>	<b>7.3</b>



# KAMERON ROACH

#23 • GUARD • RS-JR • 5-6

HOPKINS, S.C./LOWER RICHLAND HS

Physical guard that has great court vision and a skilled passer ... Tore her Achilles towards the end of 2018-19 and missed the 2019-20 season still recovering ... Is healthy and motivated to have a strong season as she should add much-needed depth at the point guard position.

**2020-21 (REDSHIRT JUNIOR)**



## EXTRA STATS ...

	20-21	Career
10+ Points	-	-
15+ Points	-	-
20+ Points	-	-
Made 3+ 3FG	-	-
10+ Rebs	-	-
Double-dbls	-	-
3+ Assists	-	1
2+ Steals	-	-
Led UK in Pts	-	-
Led UK in Rebs	-	-
Led UK in Asts	-	1
Led UK in Stls	-	1
Led UK in Blks	-	1

## CAREER HIGHS

POINTS:	6 vs. SACRAMENTO ST., 11/10/17
FGM:	2(3x) LAST AT MIAMI, 12/10/17
FGA:	6(2x) LAST vs. ALABAMA ST., 11/07/18
FTM:	4 vs. SACRAMENTO ST., 11/10/17
FTA:	4 vs. SACRAMENTO ST., 11/10/17
3FGM:	1(2x) LAST vs. MARSHALL, 12/09/20
3FGA:	2(2x) LAST vs. ALABAMA ST., 11/07/18
O-REBOUNDS:	2 vs. ALABAMA ST., 11/07/18
D-REBOUNDS:	2(3x) LAST vs. ALABAMA ST., 11/07/18
TOTAL REBOUNDS:	4 vs. ALABAMA ST., 11/07/18
ASSISTS:	3 vs. SACRAMENTO ST., 11/10/17
BLOCKS:	1 vs. SACRAMENTO ST., 11/10/17
STEALS:	3 vs. ALABAMA ST., 11/07/18
MINUTES:	16 vs. SACRAMENTO ST., 11/10/17

## SEASON HIGHS

POINTS:	3 vs. MARSHALL, 12/09/20
FGM:	1 vs. MARSHALL, 12/09/20
FGA:	1 vs. MARSHALL, 12/09/20
FTM:	-
FTA:	-
3FGM:	1 vs. MARSHALL, 12/09/20
3FGA:	1 vs. MARSHALL, 12/09/20
O-REBOUNDS:	-
D-REBOUNDS:	1(2x) LAST vs. MARSHALL, 12/09/20
TOTAL REBOUNDS:	1(2x) LAST vs. MARSHALL, 12/09/20
ASSISTS:	2 vs. MARSHALL, 12/09/20
BLOCKS:	-
STEALS:	-
MINUTES:	10 vs. MARSHALL, 12/09/20

SEASON	TEAM	GP-GS	MIN/AVG	Field Goals			3-Point		F-Throws		Rebounds				Scoring					
				FG-FGA	FG%	3FG-FGA	3FG%	FT-FTA	FT%	OFF	DEF	TOT	AVG	PF-FO	AST	TO	BLK	STL	PTS	AVG
2017-18	UK	15-0	109/7.3	10-26	.385	0-4	.000	4-4	1.000	1	6	7	0.5	13-0	4	15	1	3	24	1.6
2018-19	UK	13-0	54/4.2	4-19	.211	1-2	.500	1-2	.500	5	5	10	0.8	8-0	5	7	0	5	10	0.8
2020-21	UK	2-0	19/9.5	1-1	1.000	1-1	1.000	0-0	.000	0	2	2	1.0	1-0	3	3	0	0	3	1.5
<b>TOTAL</b>		<b>30-0</b>	<b>182/6.1</b>	<b>15-46</b>	<b>.326</b>	<b>2-7</b>	<b>.286</b>	<b>5-6</b>	<b>.833</b>	<b>6</b>	<b>13</b>	<b>19</b>	<b>0.6</b>	<b>22-0</b>	<b>12</b>	<b>25</b>	<b>1</b>	<b>8</b>	<b>37</b>	<b>1.2</b>



# ERIN TOLLER

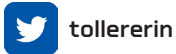
#20 • GUARD • FR • 5-7

LOUISVILLE, KY./SACRED HEART ACADEMY

A talented point guard who is a floor general at the position and can score in a variety of ways ... Healthy after a few injuries in high school and is expected to make an impact on the team this season ... Chose Kentucky over Tennessee, WKU and Xavier.

## 2020-21 (FRESHMAN)

In collegiate debut against Murray State, Toller scored six points and rallied three steals in just nine minutes.



## EXTRA STATS ...

	20-21	Career
10+ Points	0	0
15+ Points	0	0
20+ Points	0	0
25+ Points	0	0
30+ Points	0	0
35+ Points	0	0
40+ Points	0	0
Made 3+ 3FG	0	0
10+ Rebs	0	0
Double-dbls	0	0
3+ Assists	0	0
2+ Steals	1	1
Led UK in Pts	0	0
Led UK in Rebs	0	0
Led UK in Asts	0	0
Led UK in Stls	0	0
Led UK in Blks	0	0

## CAREER HIGHS

POINTS:	6 vs. MURRAY STATE, 11/25/20
FGM:	2 vs. MURRAY STATE, 11/25/20
FGA:	5 vs. MURRAY STATE, 11/25/20
FTM:	1(2x) LAST vs. MARSHALL, 12/09/20
FTA:	2(2x) LAST vs. MARSHALL, 12/09/20
3FGM:	1 vs. MURRAY STATE, 11/25/20
3FGA:	3 vs. MURRAY STATE, 11/25/20
O-REBOUNDS:	-
D-REBOUNDS:	1 vs. MARSHALL, 12/09/20
TOTAL REBOUNDS:	1 vs. MARSHALL, 12/09/20
ASSISTS:	-
BLOCKS:	-
STEALS:	3 vs. MURRAY STATE, 11/25/20
MINUTES:	9 vs. MURRAY STATE, 11/25/20

## SEASON HIGHS

POINTS:	6 vs. MURRAY STATE, 11/25/20
FGM:	2 vs. MURRAY STATE, 11/25/20
FGA:	5 vs. MURRAY STATE, 11/25/20
FTM:	1(2x) LAST vs. MARSHALL, 12/09/20
FTA:	2(2x) LAST vs. MARSHALL, 12/09/20
3FGM:	1 vs. MURRAY STATE, 11/25/20
3FGA:	3 vs. MURRAY STATE, 11/25/20
O-REBOUNDS:	-
D-REBOUNDS:	1 vs. MARSHALL, 12/09/20
TOTAL REBOUNDS:	1 vs. MARSHALL, 12/09/20
ASSISTS:	-
BLOCKS:	-
STEALS:	3 vs. MURRAY STATE, 11/25/20
MINUTES:	9 vs. MURRAY STATE, 11/25/20

SEASON	TEAM	GP-GS	MIN/AVG	Field Goals		3-Point		F-Throws		Rebounds				Scoring						
				FG-FGA	FG%	3FG-FGA	3FG%	FT-FTA	FT%	OFF	DEF	TOT	AVG	PF-FO	AST	TO	BLK	STL	PTS	AVG
2020-21	UK	3-0	20/6.6	3-8	.375	1-5	.200	2-4	.500	0	1	1	0.3	3-0	0	6	0	3	9	3.0
<b>TOTAL</b>		<b>3-0</b>	<b>20/6.6</b>	<b>3-8</b>	<b>.375</b>	<b>1-5</b>	<b>.200</b>	<b>2-4</b>	<b>.500</b>	<b>0</b>	<b>1</b>	<b>1</b>	<b>0.3</b>	<b>3-0</b>	<b>0</b>	<b>6</b>	<b>0</b>	<b>3</b>	<b>9</b>	<b>3.0</b>





# TATYANA WYATT

#14 • FORWARD • SR • 6-2

COLUMBUS, GA./COLUMBUS HS

Averaged 6.3 points and 3.7 rebounds per game hitting 39.4 percent from the floor with nine 3s in 2019-20 ... Also had 10 blocks and seven steals ... Scored 10 or more points in five games while she led UK in rebounding six time and in blocks three times ... Scored a season-high 14 points vs. Tennessee in the SEC Tournament quarterfinals, going 7-of-10 from the field and grabbing three rebounds ... Figures to have a breakout senior season with more help in the post and time to rest a lingering foot issue this offseason.

taty.wyatt14

tot\_tot14

**2020-21 (SENIOR)**

## EXTRA STATS ...

	20-21	Career
10+ Points	-	20
15+ Points	-	3
20+ Points	-	1
Made 3+ 3FG	-	1
10+ Rebs	-	2
Double-dbls	-	1
3+ Assists	-	-
2+ Steals	-	6
Led UK in Pts	-	2
Led UK in Rebs	-	13
Led UK in Asts	-	-
Led UK in Stls	-	1
Led UK in Blks	-	13

## CAREER HIGHS

POINTS:	20 vs. EVANSVILLE, 12/05/17
FGM:	8(2x) LAST vs. WCU, 12/18/18
FGA:	15 vs. MISSOURI, 03/08/19
FTM:	5(2x) LAST AT GEORGIA, 03/03/19
FTA:	8 vs. MTSU, 12/15/18
3FGM:	3 vs. ARKANSAS, 02/15/18
3FGA:	4 AT MIAMI, 12/10/17
O-REBOUNDS:	8 vs. EVANSVILLE, 12/05/17
D-REBOUNDS:	6(3x) LAST vs. MISSISSIPPI STATE, 2/16/20
TOTAL REBOUNDS:	10(2x) LAST vs. STETSON, 11/13/19
ASSISTS:	2(2x) LAST AT LOUISVILLE, 12/10/18
BLOCKS:	3 vs. TENNESSEE TECH, 12/03/17
STEALS:	3 AT CAL, 12/21/19
MINUTES:	33(2x) vs. MISSOURI, 03/08/19

## SEASON HIGHS

POINTS:	3 vs. INDIANA, 12/06/20
FGM:	1(2x) LAST vs. MARSHALL, 12/09/20
FGA:	4 vs. MARSHALL, 12/09/20
FTM:	-
FTA:	-
3FGM:	1 vs. INDIANA, 12/06/20
3FGA:	1(2x) LAST vs. MARSHALL, 12/09/20
O-REBOUNDS:	1 vs. MARSHALL, 12/09/20
D-REBOUNDS:	2 vs. INDIANA, 12/06/20
TOTAL REBOUNDS:	2(2x) LAST vs. MARSHALL, 12/09/20
ASSISTS:	-
BLOCKS:	-
STEALS:	1(2x) LAST vs. MARSHALL, 12/09/20
MINUTES:	13 vs. INDIANA, 12/06/20

SEASON	TEAM	GP-GS	MIN/AVG	Field Goals		3-Point		F-Throws		Rebounds				Scoring						
				FG-FGA	FG%	3FG-FGA	3FG%	FT-FTA	FT%	OFF	DEF	TOT	AVG	PF-FO	AST	TO	BLK	STL	PTS	AVG
2017-18	UK	24-4	404/16.8	57-135	.422	15-46	.326	30-43	.698	35	48	83	3.5	49-1	7	21	8	8	159	6.6
2018-19	UK	32-32	646/20.2	82-202	.406	9-32	.281	48-72	.667	49	73	122	3.8	99-3	5	38	17	16	221	6.9
2019-20	UK	29-20	495/17.1	65-165	.394	9-24	.375	20-37	.541	40	67	107	3.7	73-3	6	33	10	7	159	5.5
2020-21	UK	2-0	24/12.2	2-6	.333	1-2	.500	0-0	.000	1	3	4	2.0	2-0	0	0	0	2	5	2.5
<b>TOTAL</b>		<b>87-56</b>	<b>1569/18.0</b>	<b>206-508</b>	<b>.406</b>	<b>34-104</b>	<b>.327</b>	<b>98-152</b>	<b>.645</b>	<b>125</b>	<b>191</b>	<b>316</b>	<b>3.6</b>	<b>223-7</b>	<b>18</b>	<b>92</b>	<b>35</b>	<b>33</b>	<b>544</b>	<b>6.3</b>

## 2020-21 GAME REVIEWS

### 1 KENTUCKY 86, MURRAY STATE 60 - FINAL

Nov. 25, 2020 • Lexington, Ky. (Memorial Coliseum)

Official Basketball Box Score - Final  
Murray State at Kentucky  
11/25/20 Memorial Coliseum, Lexington  
2020-21 Women's Basketball

Game Time: 1:00 PM  
Game Duration: 1:55  
Attendance: 1,200

Officials: Tim Naper, Ohio Cross, Laura Morris

NO.	Name	Min	FG			FT			Rebounds	Fouls	TP	AS	TO	ST	Blocks			+/-
			M/A	MA	AA	M/A	MA	AA							B	BS	BA	
11	Laci Hawthorne	20:22	4-8	0-1	0-0	1-2	3	7	1	1	9	0	4	1	0	2	-5	
31	Kaleen Young	15:17	0-10	0-0	0-0	2-4	8	14	3	1	0	0	0	0	0	0	0	
2	Menna Mensah	22:28	1-2	0-2	0-4	5	4	9	2	5	8	1	4	0	0	2	-10	
4	Lex Meyer	25:39	3-5	2-4	0-0	1	2	1	0	8	1	4	2	0	0	0	19	
6	Money Turley	28:43	3-10	1-3	0-0	0	3	2	1	7	1	3	0	0	0	0	34	
21	Bria Sanders-Woods	14:41	2-11	1-3	1-3	0	1	4	3	6	1	5	0	0	0	0	-15	
22	Hannah McKinley	28:06	2-4	1-1	1-3	2	3	1	4	6	2	4	0	0	0	0	10	
33	Chapine Saelle	14:24	0-3	0-1	0-0	0	2	2	0	1	0	0	0	0	0	0	-10	
23	Jaleisa Russell	05:21	1-1	0-0	0-0	1	1	0	0	2	1	1	0	0	0	0	-2	
44	Nicole Gibson	03:46	0-1	0-0	0-0	0	1	1	0	0	0	0	0	0	0	0	-5	
12	Jenell Worley	07:12	0-0	0-0	0-0	1	1	0	0	0	1	1	0	0	0	0	-5	
0	G Torris Swinton	02:52	0-0	0-0	0-0	0	0	0	0	0	0	0	0	0	0	0	-2	
<b>Team</b>																		
<b>Totals</b>		24:65	5-15	7-17	2-2	22	48	15	20	60	8	32	5	0	6	28		

NO.	Name	Min	FG			FT			Rebounds	Fouls	TP	AS	TO	ST	Blocks			+/-
			M/A	MA	AA	M/A	MA	AA							B	BS	BA	
3	Kaela McKinney	23:20	5-7	0-1	0-0	0	3	3	0	6	2	0	4	2	0	0	17	
44	De'Lisa Edwards	15:51	1-6	0-0	0-0	1	1	0	2	0	0	0	0	0	0	0	0	
5	Blair Green	30:05	5-10	3-5	0-0	3	3	4	3	13	1	1	0	0	0	0	30	
15	Chastity Patterson	28:18	1-4	2-13	3-3	6	1	8	3	13	1	1	0	0	0	0	32	
34	Emma King	16:08	0-4	0-3	0-0	0	1	1	0	0	0	0	0	0	0	0	-14	
00	Olivia Owens	18:10	3-6	0-0	1-2	1	8	9	5	7	1	1	0	0	0	0	25	
11	Rodney Benton	20:26	2-10	0-6	0-3	4	5	1	2	7	3	1	2	1	0	0	18	
23	Kameron Roach	08:32	0-0	0-0	0-0	1	1	0	0	0	0	0	0	0	0	0	0	
20	Erin Toller	09:24	2-5	1-3	1-2	0	0	1	1	6	0	4	3	0	0	0	-2	
21	Nyah Leverette	17:10	1-2	0-0	0-0	2	2	3	2	3	0	0	0	0	0	0	-4	
12	Treasure Hunt	13:20	1-5	0-0	0-0	0	0	0	0	0	0	0	0	0	0	0	-1	
<b>Team</b>																		
<b>Totals</b>		30:25	18-22	15-28	23-25	18	35	19	18	60	8	32	5	0	6	28		

Biggest lead	MSU		UK		Points from Turnovers	UK	Period by Period Scoring				
	1st	2nd	3rd	4th				1st	2nd	3rd	4th
Best Scoring Run	3 (1st 6:53)	38 (3rd 3:49)	11 (1st 4:47)		30-28	MSU	14	12	20	14	60
Lead Changes	1				19-8	MSU	14	12	20	14	60
Times Tied	1				17-17	UK	30	21	21	14	86
Time with Lead	01:19	37:58			14-35	UK	30	21	21	14	86

### 2 KENTUCKY 70, BELMONT 50 - FINAL

Nov. 29, 2020 • Lexington, Ky. (Memorial Coliseum)

Official Basketball Box Score - Final  
Belmont at Kentucky  
11/29/20 Memorial Coliseum, Lexington  
2020-21 Women's Basketball

Game Time: 4:00 PM  
Game Duration: 1:55  
Attendance: 1,200

Officials: Troy Winder, Brecca Burns, Zier Jefferson

NO.	Name	Min	FG			FT			Rebounds	Fouls	TP	AS	TO	ST	Blocks			+/-
			M/A	MA	AA	M/A	MA	AA							B	BS	BA	
11	Maddox Trecco	17:11	5-13	0-1	0-0	2	0	2	4	14	0	2	1	0	1	0	-13	
20	Conley Chans	19:20	1-5	1-4	2-4	0	4	2	4	5	0	0	1	0	0	0	-19	
11	Destinee Wells	14:20	2-7	0-1	0-2	0	4	2	4	1	6	2	5	4	0	0	0	
14	Jamelyn Kinney	13:27	2-10	0-8	0-4	0	1	1	2	3	8	2	0	0	0	0	-21	
23	Nikki Baird	17:44	1-8	0-5	1-2	4	6	1	1	3	1	0	1	0	0	0	-19	
10	Allison Luby	11:47	1-1	0-0	0-0	0	3	1	0	2	0	1	0	0	0	0	-4	
22	Maddie Cook	16:15	2-4	0-0	0-0	0	0	0	2	6	1	3	0	0	0	0	10	
5	Whitney Hay	13:12	2-5	0-1	0-0	0	4	0	0	4	0	2	1	0	0	0	-6	
3	Maddison Bartley	10:08	1-6	0-1	0-0	0	2	2	0	2	1	1	0	0	0	0	-1	
<b>Team</b>																		
<b>Totals</b>		17:59	3-21	13-30	12-25	37	15	15	15	10	17	7	2	2	20			

NO.	Name	Min	FG			FT			Rebounds	Fouls	TP	AS	TO	ST	Blocks			+/-
			M/A	MA	AA	M/A	MA	AA							B	BS	BA	
3	Kaela McKinney	19:25	4-8	0-1	0-0	2	0	10	2	10	2	3	1	0	0	0	15	
44	De'Lisa Edwards	16:08	1-19	2-4	3-7	5	10	15	4	6	27	1	2	3	0	0	14	
5	Blair Green	28:11	4-10	1-4	0-0	2	4	0	0	9	1	1	0	0	0	0	18	
15	Chastity Patterson	18:20	5-12	0-3	0-1	1	1	2	0	10	2	0	0	0	0	0	19	
34	Emma King	07:44	0-1	0-0	0-0	0	3	2	1	0	0	0	0	0	0	0	-1	
11	Rodney Benton	21:27	4-8	0-1	0-0	3	5	0	9	4	0	0	0	0	0	0	20	
20	Olivia Owens	16:59	2-2	0-0	1-2	0	2	2	1	2	1	2	0	0	0	0	11	
12	Treasure Hunt	12:59	0-3	0-0	0-0	2	3	1	0	1	2	0	0	0	0	0	0	
20	Erin Toller	05:50	0-2	0-2	0-0	0	0	1	1	0	1	0	0	0	0	0	0	
21	Nyah Leverette	04:20	0-0	0-0	0-0	0	0	0	0	0	0	0	0	0	0	0	0	
<b>Team</b>																		
<b>Totals</b>		30:48	3-20	6-14	17-33	50	15	15	15	70	12	15	8	2	20			

Biggest lead	BU		UK		Points from Turnovers	UK	Period by Period Scoring				
	1st	2nd	3rd	4th				1st	2nd	3rd	4th
Best Scoring Run	9 (1st 6:26)	20 (4th 0:46)	11 (4th 2:03)		28-50	UK	15	13	13	14	50
Lead Changes	2				13-13	UK	15	13	13	14	50
Times Tied	8				13-13	UK	15	13	13	14	50
Time with Lead	04:40	34:34			14-14	UK	15	13	13	14	50

### 3 KENTUCKY 60, KANSAS STATE 49 - FINAL

Dec. 6, 2020 • Manhattan, Kan. (Bramlage Coliseum)

Official Basketball Box Score - Final  
Kentucky at Kansas St.  
12/06/20 Bramlage Coliseum, Manhattan, Kan.  
2020-21 Women's Basketball

Game Time: 4:30 PM  
Game Duration: 2:20  
Attendance: 107

Officials: Brian Garland, Mike Christiansen, Doug Knight

NO.	Name	Min	FG			FT			Rebounds	Fouls	TP	AS	TO	ST	Blocks			+/-
			M/A	MA	AA	M/A	MA	AA							B	BS	BA	
3	Kaela McKinney	18:28	2-5	0-0	1-2	4	4	8	4	3	1	3	1	0	0	0	12	
44	De'Lisa Edwards	17:15	1-2	1-2	1-2	7	5	12	2	1	16	2	2	4	1	0	10	
5	Blair Green	22:39	1-2	1-2	4-4	0	3	3	1	2	7	3	0	1	0	0	10	
10	Rhyan Howard	17:20	3-4	0-7	2-2	1	5	6	2	1	8	1	4	2	0	0	15	
15	Chastity Patterson	30:41	5-11	1-4	0-0	2	0	2	1	2	11	1	1	0	1	0	12	
1	Rodney Benton	28:00	4-11	2-7	1-2	1	4	5	1	3	11	1	2	0	0	0	5	
12	Treasure Hunt	20:15	0-0	0-0	0-0	0	0	0	0	0	0	0	0	0	0	0	0	
00	Olivia Owens	10:38	1-5	0-1	0-0	1	2	0	0	2	0	0	0	0	0	0	0	
<b>Team</b>																		
<b>Totals</b>		29:42	5-22	9-15	16-24	40	11	12	10	10	19	13	2	2	11			

NO.	Name	Min	FG			FT			Rebounds	Fouls	TP	AS
-----	------	-----	----	--	--	----	--	--	----------	-------	----	----



## 2020-21 Kentucky Women's Basketball Combined Team Statistics All games

### Game Records

Record	Overall	Home	Away	Neutral
ALL GAMES	5-0	4-0	1-0	0-0
CONFERENCE	0-0	0-0	0-0	0-0
NON-CONFERENCE	5-0	4-0	1-0	0-0

### Score by Periods

Team	1st	2nd	3rd	4th	OT	TOT
Kentucky	93	79	99	96	0	367
Opponents	68	70	75	59	0	272

### Team Box Score

No.	Player				Total		3-Point		F-Throw		Rebounds											
		GP-GS	MIN	AVG	FG-FGA	FG%	3FG-FGA	3FG%	FT-FTA	FT%	OFF	DEF	TOT	AVG	PF	DQ	A	TO	BLK	STL	PTS	AVG
44	EDWARDS, Dre'Una	5-5	115:00	23.0	30-55	.545	6-9	.667	6-11	.545	15	31	46	9.2	16	0	8	9	1	8	72	14.4
10	HOWARD, Rhyne	3-3	98:13	32.7	15-39	.385	6-20	.300	7-8	.875	3	12	15	5.0	8	0	8	10	1	4	43	14.3
15	PATTERSON, Chasity	5-5	150:11	30.0	24-53	.453	4-15	.267	16-20	.800	8	11	19	3.8	4	0	14	5	0	15	68	13.6
5	GREEN, Blair	5-5	137:56	27.6	18-42	.429	6-19	.316	6-6	1.000	5	9	14	2.8	4	0	8	2	3	4	48	9.6
01	BENTON, Robyn	5-0	109:21	21.9	16-39	.410	5-21	.238	10-12	.833	6	12	18	3.6	6	0	12	6	2	5	47	9.4
3	MCKINNEY, KeKe	4-4	129:39	32.4	9-22	.409	0-2	.000	5-8	.625	11	15	26	6.5	12	0	8	3	5	7	23	5.8
00	OWENS, Olivia	5-1	72:45	14.6	12-21	.571	0-1	.000	4-6	.667	3	16	19	3.8	11	1	3	8	2	0	28	5.6
20	TOLLER, Erin	3-0	19:57	6.6	3-8	.375	1-5	.200	2-4	.500	0	1	1	0.3	3	0	0	6	0	3	9	3.0
12	HUNT, Treasure	5-0	50:17	10.1	6-18	.333	2-9	.222	0-1	.000	2	5	7	1.4	4	0	3	5	0	1	14	2.8
14	WYATT, Tatyana	2-0	24:27	12.2	2-6	.333	1-2	.500	0-0	.000	1	3	4	2.0	2	0	0	0	0	2	5	2.5
21	LEVERETTER, Nyah	3-0	44:04	14.7	3-5	.600	0-0	.000	1-4	.250	7	7	14	4.7	7	0	0	1	2	0	7	2.3
23	ROACH, Kameron	2-0	18:55	9.5	1-1	1.000	1-1	1.000	0-0	.000	0	2	2	1.0	1	0	3	3	0	0	3	1.5
34	KING, Emma	2-2	29:15	14.6	0-10	.000	0-4	.000	0-0	.000	0	4	4	2.0	2	0	3	2	0	2	0	0.0
Team											7	14	21					2				
<b>Total</b>		<b>5</b>	<b>1000</b>		<b>139-319</b>	<b>.436</b>	<b>32-108</b>	<b>.296</b>	<b>57-80</b>	<b>.713</b>	<b>68</b>	<b>142</b>	<b>210</b>	<b>42.0</b>	<b>80</b>	<b>1</b>	<b>70</b>	<b>62</b>	<b>16</b>	<b>51</b>	<b>367</b>	<b>73.4</b>
<b>Opponents</b>		<b>5</b>	<b>1000</b>		<b>101-287</b>	<b>.352</b>	<b>22-89</b>	<b>.247</b>	<b>48-81</b>	<b>.593</b>	<b>61</b>	<b>121</b>	<b>182</b>	<b>36.4</b>	<b>76</b>	<b>2</b>	<b>46</b>	<b>93</b>	<b>7</b>	<b>24</b>	<b>272</b>	<b>54.4</b>

### Team Statistics

	UK	OPP
<b>Scoring</b>	<b>367</b>	<b>272</b>
Points per game	73.4	54.4
Scoring margin	+19.0	-
<b>Field goals-att</b>	<b>139-319</b>	<b>101-287</b>
Field goal pct	.436	.352
<b>3 point fg-att</b>	<b>32-108</b>	<b>22-89</b>
3-point FG pct	.296	.247
3-pt FG made per game	6.4	4.4
<b>Free throws-att</b>	<b>57-80</b>	<b>48-81</b>
Free throw pct	.713	.593
F-Throws made per game	11.4	9.6
<b>Rebounds</b>	<b>210</b>	<b>182</b>
Rebounds per game	42.0	36.4
Rebounding margin	+5.6	-
<b>Assists</b>	<b>70</b>	<b>46</b>
Assists per game	14.0	9.2
<b>Turnovers</b>	<b>62</b>	<b>93</b>
Turnovers per game	12.4	18.6
Turnover margin	+6.2	-
Assist/turnover ratio	1.1	0.5
<b>Steals</b>	<b>51</b>	<b>24</b>
Steals per game	10.2	4.8
<b>Blocks</b>	<b>16</b>	<b>7</b>
Blocks per game	3.2	1.4
<b>Winning streak</b>	<b>5</b>	<b>-</b>
Home win streak	4	-
<b>Attendance</b>	<b>4800</b>	<b>502</b>
Home games-Avg/Game	4-1200	1-502
Neutral site-Avg/Game	-	0-0

### Team Results

Date	Opponent		Score	Att.
11/25/2020	Murray St.	W	86-60	1200
11/29/2020	Belmont	W	70-50	1200
12/03/2020	at Kansas St.	W	60-49	502
12/06/2020	Indiana	W	72-68	1200
12/09/2020	Marshall	W	79-45	1200



**2020-21 Kentucky Women's Basketball  
Team Game-by-Game  
All games**

Opponent	Date	Score	W	Total		3-Pointers		Free throws		Rebounds										
				FG-FGA	PCT	3FG-FGA	PCT	FT-FTA	PCT	OFF	DEF	TOT	AVG	PF	A	TO	BLK	STL	PTS	AVG
Murray St.	11/25/2020	86-60	W	30-75	.400	8-27	.296	18-22	.818	15	28	43	43.0	20	16	13	6	19	86	86.0
Belmont	11/29/2020	70-50	W	30-68	.441	4-20	.200	6-14	.429	17	33	50	46.5	15	12	15	2	8	70	78.0
at Kansas St.	12/03/2020	60-49	W	23-63	.365	5-23	.217	9-12	.750	16	24	40	44.3	11	10	9	2	13	60	72.0
Indiana	12/06/2020	72-68	W	23-52	.442	8-16	.500	18-22	.818	8	29	37	42.5	18	12	13	5	5	72	72.0
Marshall	12/09/2020	79-45	W	33-61	.541	7-22	.318	6-10	.600	12	28	40	42.0	16	20	12	1	6	79	73.4
<b>Total</b>		<b>367</b>		<b>139-319</b>	<b>.436</b>	<b>32-108</b>	<b>.296</b>	<b>57-80</b>	<b>.713</b>	<b>68</b>	<b>142</b>	<b>210</b>	<b>42.0</b>	<b>80</b>	<b>70</b>	<b>62</b>	<b>16</b>	<b>51</b>	<b>367</b>	<b>73.4</b>
Opponents		272		101-287	.352	22-89	.247	48-81	.593	61	121	182	36.4	76	46	93	7	24	272	54.4

**Kentucky Averages**

Games Played	Points/game	FG Pct	3FG Pct	FT Pct	Rebounds/game	Assists/game	Turnovers/game	Assist/Turnover ratio	Steals/game	Blocks/game
5	73.4	43.6	29.6	71.3	42.0	14.0	12.4	1.1	10.2	3.2