



Official Basketball Box Score - Final
Mount St. Mary's at Kentucky
 11/16/21 Rupp Arena, Lexington
 2021-22 Men's Basketball

Game Time: 7:00 PM
 Game Duration: 2:13
 Attendance: 18,227

Officials: Steven Anderson, Todd Austin, Wesley Ford

Mount St. Mary's - 55

Record: 1-3

NO.	Name	Min	FG		3P		FT			Rebounds			Fouls		TP	AS	TO	ST	Blocks		+/-
			M-A	M-A	M-A	OR	DR	TOT	PF	FD	BS	BA									
13	Mezie Offurum	F 24:07	1-5	0-0	2-5	1	3	4	0	3	4	1	3	1	1	1	1	1	1	1	-30
22	Nana Opoku	F 30:45	2-4	0-0	0-0	0	2	2	3	1	4	3	1	0	3	0	3	0	3	0	-14
42	Malik Jefferson	F 27:22	2-8	0-0	0-0	4	0	4	1	0	4	1	2	1	1	1	1	1	1	-20	
5	Jalen Benjamin	G 24:35	3-8	1-5	4-4	0	2	2	0	5	11	2	3	0	0	0	0	0	0	-5	
23	Josh Reaves	G 20:37	4-9	3-7	0-0	0	0	0	1	0	11	0	2	0	0	0	0	0	0	-22	
2	Deandre Thomas	20:15	1-3	1-2	3-4	1	1	2	0	2	6	1	1	1	0	1	0	1	-19		
1	Dakota Leffew	26:38	3-9	0-2	4-4	0	1	1	0	2	10	0	0	1	0	2	0	2	-9		
24	Frantisek Barton	13:21	0-2	0-0	0-0	0	2	2	0	0	0	0	1	1	1	1	1	1	-10		
3	Jaylin Gibson	08:50	1-4	1-3	0-2	0	1	1	1	3	3	0	0	0	0	0	0	0	8		
12	Jedy Cordilia	02:15	1-1	0-0	0-0	2	0	2	1	0	2	0	0	0	0	0	0	0	-2		
11	Elijah Elliott	01:15	0-0	0-0	0-2	0	0	0	0	1	0	0	1	2	0	0	0	0	-2		
Team										4	3	7		0		2					
Totals			18-53	6-19	13-21	12	15	27	7	17	55	8	16	7	6	6	6	6	6	-25	

Shooting By Period		
1st FG%	10-28	35.7%
3PT%	3-10	30.0%
FT%	4-5	80%
2nd FG%	8-25	32.0%
3PT%	3-9	33.3%
FT%	9-16	56.3%
GM FG%	18-53	34.0%
3PT%	6-19	31.6%
FT%	13-21	61.9%

Dead Ball Rebounds: 4, 1

Technical Fouls: NONE

Kentucky - 80

Record: 2-1

NO.	Name	Min	FG		3P		FT			Rebounds			Fouls		TP	AS	TO	ST	Blocks		+/-
			M-A	M-A	M-A	OR	DR	TOT	PF	FD	BS	BA									
12	Keion Brooks Jr.	F 24:27	4-9	0-0	2-2	2	5	7	1	1	10	1	1	0	1	0	1	0	1	0	25
34	Oscar Tshiebwe	F 33:27	11-14	0-0	2-2	5	11	16	2	2	24	1	2	1	3	0	3	0	26		
2	Sahvir Wheeler	G 29:12	6-11	0-1	0-0	1	0	1	4	1	12	8	1	2	0	1	32				
3	TyTy Washington Jr.	G 29:25	7-12	2-3	0-0	0	3	3	2	1	16	3	4	1	0	2	13				
31	Kellan Grady	G 22:53	3-5	2-3	0-0	1	1	2	0	0	8	0	0	2	0	0	24				
4	Daimion Collins	15:47	0-2	0-0	2-2	0	2	2	2	1	2	0	0	1	1	0	-5				
10	Davion Mintz	17:01	0-3	0-1	0-0	1	1	2	2	0	0	1	2	0	0	2	11				
23	Bryce Hopkins	14:13	1-4	0-1	0-0	0	1	1	2	0	2	0	0	1	1	1	-1				
11	Dontaie Allen	08:32	1-3	0-1	0-0	0	0	0	1	0	2	1	0	0	0	0	0				
14	Brennan Canada	01:41	0-0	0-0	0-0	0	0	0	0	0	0	0	0	0	0	0	0				
20	Zan Payne	01:41	1-1	0-0	2-2	0	0	0	0	1	4	0	0	1	0	0	0				
25	Kareem Watkins	01:41	0-0	0-0	0-0	0	1	1	1	0	0	0	2	0	0	0	0				
Team										4	2	6		0		0					
Totals			34-64	4-10	8-8	14	27	41	17	7	80	15	12	9	6	6	25				

Shooting By Period		
1st FG%	17-30	56.7%
3PT%	2-7	28.6%
FT%	2-2	100%
2nd FG%	17-34	50.0%
3PT%	2-3	66.7%
FT%	6-6	100%
GM FG%	34-64	53.1%
3PT%	4-10	40.0%
FT%	8-8	100.0%

Dead Ball Rebounds: 0, 0

Technical Fouls: NONE

	MSM	UKY
Biggest lead	3 (1st 17:32)	31 (2nd 11:14)
Best Scoring Run	9(2nd 4:03)	18(2nd 16:15)
Lead Changes	7	
Times Tied	2	
Time with Lead	04:06	34:55

Points from	MSM	UKY
Turnovers	15	22
Paint	16	46
Second Chance	8	16
Fast Breaks	4	13
Bench	21	10

	Period by Period Scoring		
	1st	2nd	TOT
MSM	27	28	55
UKY	38	42	80



Mount St. Mary's at Kentucky

11/16/21 Rupp Arena, Lexington
2021-22 Men's Basketball

Officials: Steven Anderson, Todd Austin, Wesley Ford

Period 1

Quarter Starters:

UKY	2 Wheeler S	3 Washington Jr. T	12 Brooks Jr. K	31 Grady K	34 Tshiebwe O
MSM	5 Benjamin J	13 Offurum M	22 Opoku N	23 Reaves J	42 Jefferson M

Game Time	UKY	Score	Diff	MSM
20:00	34 TSHIEBWE O jumpball lost			22 OPOKU N jumpball won
19:36		0-2	-2	22 OPOKU N 2pt FG in the paint, jump shot made (2)
19:36				5 BENJAMIN J assist (1)
19:17	34 TSHIEBWE O 2pt FG in the paint, jump shot made (2)	2-2	0	
18:55				13 OFFURUM M turnover travel (1)
18:42	3 WASHINGTON JR. T 2pt FG from turnover outside the paint, jump shot made (2)	4-2	2	
18:10		4-5	-1	23 REAVES J 3pt FG , jump shot made (3)
18:10				13 OFFURUM M assist (1)
17:57	12 BROOKS JR. K turnover out of bounds (1)			
17:42				13 OFFURUM M 2pt FG from turnover in the paint, jump shot missed
17:37				42 JEFFERSON M offensive rebound (1)
17:37				42 JEFFERSON M 2pt FG from turnover second chance in the paint, layup missed
17:34				offensive rebound (2)
17:32	12 BROOKS JR. K substitution out			
17:32	4 COLLINS D substitution in			
17:32		4-7	-3	22 OPOKU N 2pt FG from turnover second chance in the paint, dunk, made (4)
17:32				42 JEFFERSON M assist (1)
17:22	34 TSHIEBWE O 2pt FG outside the paint, jump shot made (4)	6-7	-1	
17:22	2 WHEELER S assist (1)			
17:01				23 REAVES J 2pt FG in the paint, jump shot missed
16:59	34 TSHIEBWE O defensive rebound (1)			
16:54	2 WHEELER S 3pt FG , jump shot missed			
16:52				defensive rebound (3)
16:51				42 JEFFERSON M substitution out
16:51				2 THOMAS D substitution in
16:32				23 REAVES J 3pt FG , jump shot missed
16:28	defensive rebound (2)			
16:15	34 TSHIEBWE O 2pt FG in the paint, dunk, made (6)	8-7	1	
16:15	2 WHEELER S assist (2)			
15:58				2 THOMAS D 2pt FG in the paint, layup blocked
15:58	34 TSHIEBWE O block (1)			
15:54	34 TSHIEBWE O defensive rebound (2)			
15:52	3 WASHINGTON JR. T turnover bad pass (1)			2 THOMAS D steal (1)
15:41	4 COLLINS D foul shooting (1 - 1)			13 OFFURUM M foul drawn (1)
15:41	Timeout media			
15:41				23 REAVES J substitution out
15:41				1 LEFFEW D substitution in
15:41		8-8	0	13 OFFURUM M free throw 1 - 2 made (1)
15:41		8-9	-1	13 OFFURUM M free throw 2 - 2 made (2)
15:41				13 OFFURUM M substitution out



Mount St. Mary's at Kentucky

11/16/21 Rupp Arena, Lexington
2021-22 Men's Basketball

Game Time: 7:00 PM
Game Duration: 2:13
Attendance: 18,227

Officials: Steven Anderson, Todd Austin, Wesley Ford

Game Time	UKY	Score	Diff	MSM
15:41				24 BARTON F substitution in
15:27	3 WASHINGTON JR. T 2pt FG outside the paint, jump shot made (4)	10-9	1	
15:08		10-11	-1	1 LEFFEWE D 2pt FG in the paint, jump shot made (2)
14:54	31 GRADY K substitution out			
14:54	10 MINTZ D substitution in			
14:54				5 BENJAMIN J substitution out
14:54				22 OPOKU N substitution out
14:54				13 OFFURUM M substitution in
14:54				42 JEFFERSON M substitution in
14:36	10 MINTZ D 2pt FG in the paint, layup blocked			
14:36				42 JEFFERSON M block (1)
14:31				13 OFFURUM M defensive rebound (1)
14:17				13 OFFURUM M 2pt FG in the paint, jump shot missed
14:14	4 COLLINS D defensive rebound (1)			
14:09	10 MINTZ D 3pt FG , jump shot missed			
14:06	34 TSHIEBWE O offensive rebound (3)			
14:02	34 TSHIEBWE O 2pt FG second chance outside the paint, jump shot missed			
13:59				2 THOMAS D defensive rebound (1)
13:39	34 TSHIEBWE O steal (1)			2 THOMAS D turnover bad pass (1)
13:30	34 TSHIEBWE O 2pt FG from turnover outside the paint, jump shot made (8)	12-11	1	
13:30	2 WHEELER S assist (3)			
13:01	4 COLLINS D steal (1)			24 BARTON F turnover lost ball (1)
12:56	2 WHEELER S 2pt FG fast break from turnover in the paint, layup made (2)	14-11	3	
12:56	3 WASHINGTON JR. T assist (1)			
12:44				Timeout 30 Sec
12:44				2 THOMAS D substitution out
12:44				13 OFFURUM M substitution out
12:44				24 BARTON F substitution out
12:44				5 BENJAMIN J substitution in
12:44				22 OPOKU N substitution in
12:44				23 REAVES J substitution in
12:25				1 LEFFEWE D 3pt FG , jump shot missed
12:22	10 MINTZ D defensive rebound (1)			
12:16	2 WHEELER S 2pt FG in the paint, jump shot missed			
12:13				22 OPOKU N defensive rebound (1)
12:00	10 MINTZ D foul shooting (1 - 2)			1 LEFFEWE D foul drawn (1)
12:00				Timeout media
12:00	4 COLLINS D substitution out			
12:00	12 BROOKS JR. K substitution in			
12:00	2 WHEELER S substitution out			
12:00	31 GRADY K substitution in			
12:00		14-12	2	1 LEFFEWE D free throw 1 - 2 made (3)
12:00		14-13	1	1 LEFFEWE D free throw 2 - 2 made (4)
12:00				1 LEFFEWE D substitution out
12:00				13 OFFURUM M substitution in
11:47	34 TSHIEBWE O 2pt FG in the paint, jump shot made (10)	16-13	3	



Mount St. Mary's at Kentucky

11/16/21 Rupp Arena, Lexington
2021-22 Men's Basketball

Officials: Steven Anderson, Todd Austin, Wesley Ford

Game Time	UKY	Score	Diff	MSM
11:24	31 GRADY K steal (1)			13 OFFURUM M turnover lost ball (2)
11:03	12 BROOKS JR. K 2pt FG from turnover outside the paint, jump shot missed			
10:59				13 OFFURUM M defensive rebound (2)
10:52		16-15	1	5 BENJAMIN J 2pt FG outside the paint, jump shot made (2)
10:39	3 WASHINGTON JR. T 3pt FG , jump shot made (7)	19-15	4	
10:39	12 BROOKS JR. K assist (1)			
10:14				5 BENJAMIN J 2pt FG in the paint, jump shot missed
10:10	12 BROOKS JR. K defensive rebound (1)			
10:00	34 TSHIEBWE O foul drawn (1)			22 OPOKU N foul shooting (1 - 1)
10:00	34 TSHIEBWE O free throw 1 - 2 made (11)	20-15	5	
10:00	3 WASHINGTON JR. T substitution out			
10:00	31 GRADY K substitution out			
10:00	2 WHEELER S substitution in			
10:00	23 HOPKINS B substitution in			
10:00				5 BENJAMIN J substitution out
10:00				23 REAVES J substitution out
10:00				1 LEFFEWE D substitution in
10:00				2 THOMAS D substitution in
10:00	34 TSHIEBWE O free throw 2 - 2 made (12)	21-15	6	
10:00	34 TSHIEBWE O substitution out			
10:00	4 COLLINS D substitution in			
09:43		21-18	3	2 THOMAS D 3pt FG , jump shot made (3)
09:43				22 OPOKU N assist (1)
09:17	4 COLLINS D 2pt FG outside the paint, jump shot missed			
09:12	12 BROOKS JR. K offensive rebound (2)			
09:09	23 HOPKINS B 3pt FG second chance, jump shot missed			
09:04	2 WHEELER S offensive rebound (1)			
08:54	23 HOPKINS B 2pt FG second chance in the paint, jump shot made (2)	23-18	5	
08:26				13 OFFURUM M 2pt FG in the paint, jump shot missed
08:24	12 BROOKS JR. K defensive rebound (3)			
08:19	12 BROOKS JR. K 2pt FG fast break in the paint, layup made (2)	25-18	7	
08:00		25-20	5	13 OFFURUM M 2pt FG in the paint, layup made (4)
08:00	4 COLLINS D foul shooting (2 - 3)			13 OFFURUM M foul drawn (2)
07:59	Timeout media			
07:59	4 COLLINS D substitution out			
07:59	34 TSHIEBWE O substitution in			
07:59				1 LEFFEWE D substitution out
07:59				2 THOMAS D substitution out
07:59				42 JEFFERSON M substitution out
07:59				5 BENJAMIN J substitution in
07:59				23 REAVES J substitution in
07:59				24 BARTON F substitution in
07:59				13 OFFURUM M free throw 1 - 1 missed
07:59	34 TSHIEBWE O defensive rebound (4)			
07:41	12 BROOKS JR. K 2pt FG in the paint, layup missed			
07:39				22 OPOKU N defensive rebound (2)
07:10				22 OPOKU N 2pt FG in the paint, jump shot missed
07:07	12 BROOKS JR. K defensive rebound (4)			



Mount St. Mary's at Kentucky

11/16/21 Rupp Arena, Lexington
2021-22 Men's Basketball

Game Time: 7:00 PM
Game Duration: 2:13
Attendance: 18,227

Officials: Steven Anderson, Todd Austin, Wesley Ford

Game Time	UKY	Score	Diff	MSM
06:45	12 BROOKS JR. K 2pt FG in the paint, layup made (4)	27-20	7	
06:45	10 MINTZ D assist (1)			
06:17				5 BENJAMIN J 3pt FG , jump shot missed
06:14				offensive rebound (9)
06:14	10 MINTZ D substitution out			
06:14	11 ALLEN D substitution in			
06:14				13 OFFURUM M substitution out
06:14				24 BARTON F substitution out
06:14				1 LEFFEWE D substitution in
06:14				42 JEFFERSON M substitution in
06:09				42 JEFFERSON M 2pt FG second chance outside the paint, jump shot blocked
06:09	12 BROOKS JR. K block (1)			
06:05	34 TSHIEBWE O defensive rebound (5)			
05:59	2 WHEELER S foul offensive (1 - 4)			5 BENJAMIN J foul drawn (1)
05:59	2 WHEELER S turnover offensive (1)			
05:58				23 REAVES J substitution out
05:58				2 THOMAS D substitution in
05:58	2 WHEELER S substitution out			
05:58	3 WASHINGTON JR. T substitution in			
05:34				2 THOMAS D 3pt FG from turnover, jump shot missed
05:32	12 BROOKS JR. K defensive rebound (5)			
05:19	11 ALLEN D 2pt FG in the paint, jump shot missed			
05:15	12 BROOKS JR. K offensive rebound (6)			
05:04	3 WASHINGTON JR. T 2pt FG second chance in the paint, driving layup made (9)	29-20	9	
04:44		29-23	6	5 BENJAMIN J 3pt FG , jump shot made (5)
04:44				22 OPOKU N assist (2)
04:24	12 BROOKS JR. K 2pt FG outside the paint, jump shot missed			
04:19				1 LEFFEWE D defensive rebound (1)
04:14				5 BENJAMIN J 3pt FG , jump shot missed
04:10				42 JEFFERSON M offensive rebound (2)
04:09		29-25	4	42 JEFFERSON M 2pt FG second chance in the paint, layup made (2)
04:02	Timeout 30 Sec			
04:02	12 BROOKS JR. K substitution out			
04:02	2 WHEELER S substitution in			
04:02				22 OPOKU N substitution out
04:02				42 JEFFERSON M substitution out
04:02				13 OFFURUM M substitution in
04:02				24 BARTON F substitution in
03:52	11 ALLEN D 3pt FG , jump shot missed			
03:50				defensive rebound (12)
03:26	23 HOPKINS B steal (1)			5 BENJAMIN J turnover bad pass (1)
03:22	11 ALLEN D 2pt FG from turnover outside the paint, jump shot made (2)	31-25	6	
03:22	3 WASHINGTON JR. T assist (2)			
02:50				1 LEFFEWE D 2pt FG outside the paint, jump shot missed
02:47	34 TSHIEBWE O defensive rebound (6)			
02:35	34 TSHIEBWE O 2pt FG in the paint, dunk, made (14)	33-25	8	



Mount St. Mary's at Kentucky

11/16/21 Rupp Arena, Lexington
2021-22 Men's Basketball

Game Time: 7:00 PM

Game Duration: 2:13

Attendance: 18,227

Officials: Steven Anderson, Todd Austin, Wesley Ford

Game Time	UKY	Score	Diff	MSM
02:35	11 ALLEN D assist (1)			
02:15				24 BARTON F 2pt FG in the paint, jump shot blocked
02:15	34 TSHIEBWE O block (2)			
02:15				offensive rebound (13)
02:15	23 HOPKINS B substitution out			
02:15	12 BROOKS JR. K substitution in			
02:15				1 LEFFEW D substitution out
02:15				2 THOMAS D substitution out
02:15				24 BARTON F substitution out
02:15				22 OPOKU N substitution in
02:15				23 REAVES J substitution in
02:15				42 JEFFERSON M substitution in
02:15	2 WHEELER S steal (1)			23 REAVES J turnover bad pass (1)
02:07	3 WASHINGTON JR. T turnover lost ball (2)			
01:52		33-27	6	23 REAVES J 2pt FG from turnover outside the paint, jump shot made (5)
01:38	2 WHEELER S 2pt FG outside the paint, jump shot made (4)	35-27	8	
01:15	11 ALLEN D foul personal (1 - 5)			5 BENJAMIN J foul drawn (2)
01:15	11 ALLEN D substitution out			
01:15	31 GRADY K substitution in			
01:10				23 REAVES J 3pt FG , jump shot missed
01:07	34 TSHIEBWE O defensive rebound (7)			
00:52	3 WASHINGTON JR. T 3pt FG , jump shot made (12)	38-27	11	
00:52	2 WHEELER S assist (4)			
00:28				5 BENJAMIN J 3pt FG , jump shot missed
00:24	31 GRADY K defensive rebound (1)			
00:05	2 WHEELER S foul drawn (1)			23 REAVES J foul personal (1 - 2)
00:03				5 BENJAMIN J substitution out
00:03				23 REAVES J substitution out
00:03				1 LEFFEW D substitution in
00:03				2 THOMAS D substitution in
00:01	3 WASHINGTON JR. T 3pt FG , jump shot missed			
00:00				defensive dead ball rebound (1)
END OF PERIOD				
UKY 38-27 MSM				



Official Basketball Box Score - First Half
Mount St. Mary's at Kentucky
 11/16/21 Rupp Arena, Lexington
 2021-22 Men's Basketball

Game Time: 7:00 PM
 Game Duration: 2:13
 Attendance: 18,227

Officials: Steven Anderson, Todd Austin, Wesley Ford

Mount St. Mary's - 27

NO.	Name	Min	FG			Rebounds			Fouls		TP	AS	TO	ST	Blocks		+/-
			M-A	3P	FT	OR	DR	TOT	PF	FD					BS	BA	
13	Mezie Offurum	F 16:17	1-4	0-0	2-3	0	2	2	0	2	4	1	2	0	0	0	-16
22	Nana Opoku	F 16:03	2-3	0-0	0-0	0	2	2	1	0	4	2	0	0	0	0	-3
42	Malik Jefferson	F 14:31	1-3	0-0	0-0	2	0	2	0	0	2	1	0	0	1	1	-5
5	Jalen Benjamin	G 15:45	2-6	1-4	0-0	0	0	0	0	2	5	1	1	0	0	0	-7
23	Josh Reaves	G 11:15	2-5	1-3	0-0	0	0	0	1	0	5	0	1	0	0	0	-8
2	Deandre Thomas	09:55	1-3	1-2	0-0	0	1	1	0	0	3	0	1	1	0	1	-5
1	Dakota Leffew	09:45	1-3	0-1	2-2	0	1	1	0	1	4	0	0	0	0	0	-1
24	Frantisek Barton	06:29	0-1	0-0	0-0	0	0	0	0	0	0	0	1	0	0	1	-10
Team						3	2	5			0		0				
Totals			10-28	3-10	4-5	5	8	13	2	5	27	5	6	1	1	3	-11

Shooting By Period		
1st FG%	10-28	35.7%
3PT%	3-10	30.0%
FT%	4-5	80%
GM FG%	10-28	35.7%
3PT%	3-10	30.0%
FT%	4-5	80.0%

Dead Ball Rebounds: 0, 1

Technical Fouls::NONE

Kentucky - 38

NO.	Name	Min	FG			Rebounds			Fouls		TP	AS	TO	ST	Blocks		+/-
			M-A	3P	FT	OR	DR	TOT	PF	FD					BS	BA	
12	Keion Brooks Jr.	F 12:41	2-5	0-0	0-0	2	4	6	0	0	4	1	1	0	1	0	3
34	Oscar Tshiebwe	F 17:59	6-7	0-0	2-2	1	6	7	0	1	14	0	0	1	2	0	12
2	Sahvir Wheeler	G 16:04	2-4	0-1	0-0	1	0	1	1	1	4	4	1	1	0	0	12
3	TyTy Washington Jr.	G 15:58	5-6	2-3	0-0	0	0	0	0	0	12	2	2	0	0	0	9
31	Kellan Grady	G 08:21	0-0	0-0	0-0	0	1	1	0	0	0	0	0	1	0	0	4
4	Daimion Collins	07:33	0-1	0-0	0-0	0	1	1	2	0	0	0	0	1	0	0	3
10	Davion Mintz	08:40	0-2	0-1	0-0	0	1	1	1	0	0	1	0	0	0	1	8
23	Bryce Hopkins	07:45	1-2	0-1	0-0	0	0	0	0	0	2	0	0	1	0	0	3
11	Dontaie Allen	04:59	1-3	0-1	0-0	0	0	0	1	0	2	1	0	0	0	0	1
Team						0	1	1			0		0				
Totals			17-30	2-7	2-2	4	14	18	5	2	38	9	4	5	3	1	11

Shooting By Period		
1st FG%	17-30	56.7%
3PT%	2-7	28.6%
FT%	2-2	100%
GM FG%	17-30	56.7%
3PT%	2-7	28.6%
FT%	2-2	100.0%

Dead Ball Rebounds: 0, 0

Technical Fouls::NONE

	MSM	UKY
Biggest lead	3 (1 st 17:32)	11 (1 st 0:52)
Best Scoring Run	5(1 st 17:32)	5(1 st 10:00)
Lead Changes	7	
Times Tied	2	
Time with Lead	04:06	14:55

Points from	MSM	UKY
Turnovers	6	8
Paint	10	18
Second Chance	4	4
Fast Breaks	0	4
Bench	7	4

	Period by Period Scoring		
	1st	2nd	TOT
MSM	27	28	55
UKY	38	42	80



Mount St. Mary's at Kentucky

11/16/21 Rupp Arena, Lexington
2021-22 Men's Basketball

Officials: Steven Anderson, Todd Austin, Wesley Ford

Period 2

Quarter Starters:

UKY	2 Wheeler S	3 Washington Jr. T	12 Brooks Jr. K	31 Grady K	34 Tshiebwe O
MSM	5 Benjamin J	13 Offurum M	22 Opoku N	23 Reaves J	42 Jefferson M

Game Time	UKY	Score	Diff	MSM
20:00				1 LEFFEW D substitution out
20:00				2 THOMAS D substitution out
20:00				5 BENJAMIN J substitution in
20:00				23 REAVES J substitution in
19:49	2 WHEELER S 2pt FG in the paint, layup made (6)	40-27	13	
19:33				42 JEFFERSON M 2pt FG outside the paint, jump shot missed
19:26				42 JEFFERSON M offensive rebound (3)
19:26				42 JEFFERSON M 2pt FG second chance in the paint, layup missed
19:24	34 TSHIEBWE O defensive rebound (8)			
19:20	34 TSHIEBWE O 2pt FG in the paint, dunk, made (16)	42-27	15	
19:20	2 WHEELER S assist (5)			
19:17				Timeout 30 Sec
18:53				23 REAVES J 3pt FG , jump shot missed
18:50				offensive rebound (15)
18:49	31 GRADY K steal (2)			23 REAVES J turnover bad pass (2)
18:45	31 GRADY K 2pt FG from turnover in the paint, layup missed			
18:42	34 TSHIEBWE O offensive rebound (9)			
18:42	34 TSHIEBWE O foul drawn (2)			22 OPOKU N foul personal (2 - 1)
18:34	2 WHEELER S 2pt FG from turnover second chance in the paint, layup made (8)	44-27	17	
18:09	3 WASHINGTON JR. T steal (1)			13 OFFURUM M turnover lost ball (3)
18:04	3 WASHINGTON JR. T 2pt FG from turnover in the paint, layup missed			
18:03	offensive rebound (21)			
18:03				13 OFFURUM M substitution out
18:03				1 LEFFEW D substitution in
17:52	3 WASHINGTON JR. T 2pt FG from turnover second chance outside the paint, jump shot made (14)	46-27	19	
17:28				5 BENJAMIN J turnover bad pass (2)
17:28				5 BENJAMIN J substitution out
17:28				2 THOMAS D substitution in
17:13	34 TSHIEBWE O 2pt FG from turnover outside the paint, jump shot missed			
17:09	34 TSHIEBWE O offensive rebound (10)			
17:02	2 WHEELER S 2pt FG from turnover second chance in the paint, layup made (10)	48-27	21	
16:35				22 OPOKU N 2pt FG in the paint, jump shot missed
16:33	3 WASHINGTON JR. T defensive rebound (1)			
16:15	31 GRADY K 3pt FG , jump shot made (3)	51-27	24	
16:15	3 WASHINGTON JR. T assist (3)			
15:55		51-30	21	23 REAVES J 3pt FG , jump shot made (8)
15:55				2 THOMAS D assist (1)
15:42	12 BROOKS JR. K foul drawn (1)			22 OPOKU N foul shooting (3 - 2)
15:42				Timeout media



Mount St. Mary's at Kentucky

11/16/21 Rupp Arena, Lexington
2021-22 Men's Basketball

Game Time: 7:00 PM

Game Duration: 2:13

Attendance: 18,227

Officials: Steven Anderson, Todd Austin, Wesley Ford

Game Time	UKY	Score	Diff	MSM
15:42	3 WASHINGTON JR. T substitution out			
15:42	10 MINTZ D substitution in			
15:42				23 REAVES J substitution out
15:42				42 JEFFERSON M substitution out
15:42				13 OFFURUM M substitution in
15:42				24 BARTON F substitution in
15:42	12 BROOKS JR. K free throw 1 - 2 made (5)	52-30	22	
15:42	12 BROOKS JR. K free throw 2 - 2 made (6)	53-30	23	
15:22		53-32	21	1 LEFFEW D 2pt FG outside the paint, jump shot made (6)
15:01	2 WHEELER S 2pt FG outside the paint, jump shot missed			
14:56	34 TSHIEBWE O offensive rebound (11)			
14:56	34 TSHIEBWE O 2pt FG second chance in the paint, layup made (18)	55-32	23	
14:49				1 LEFFEW D 3pt FG , jump shot missed
14:46	34 TSHIEBWE O defensive rebound (12)			
14:41	12 BROOKS JR. K 2pt FG fast break in the paint, layup made (8)	57-32	25	
14:41	2 WHEELER S assist (6)			
14:17				22 OPOKU N turnover bad pass (1)
14:17				24 BARTON F substitution out
14:17				42 JEFFERSON M substitution in
13:47	34 TSHIEBWE O 2pt FG from turnover in the paint, layup made (20)	59-32	27	
13:47	2 WHEELER S assist (7)			
13:16	2 WHEELER S steal (2)			42 JEFFERSON M turnover bad pass (1)
13:09	2 WHEELER S 2pt FG fast break from turnover in the paint, layup made (12)	61-32	29	
13:09				Timeout 30 Sec
13:09				13 OFFURUM M substitution out
13:09				23 REAVES J substitution in
12:49		61-35	26	23 REAVES J 3pt FG , jump shot made (11)
12:49				22 OPOKU N assist (3)
12:37	34 TSHIEBWE O 2pt FG in the paint, jump shot made (22)	63-35	28	
12:09		63-37	26	1 LEFFEW D 2pt FG outside the paint, jump shot made (8)
11:48	12 BROOKS JR. K 2pt FG in the paint, jump shot missed			
11:42	31 GRADY K offensive rebound (2)			
11:41	31 GRADY K 2pt FG second chance in the paint, jump shot made (5)	65-37	28	
11:22				23 REAVES J 3pt FG , jump shot missed
11:19	34 TSHIEBWE O defensive rebound (13)			
11:14	31 GRADY K 3pt FG fast break, jump shot made (8)	68-37	31	
11:14	2 WHEELER S assist (8)			
10:50	2 WHEELER S foul personal (2 - 1)			22 OPOKU N foul drawn (1)
10:50	Timeout media			
10:50	2 WHEELER S substitution out			
10:50	12 BROOKS JR. K substitution out			
10:50	31 GRADY K substitution out			
10:50	34 TSHIEBWE O substitution out			
10:50	3 WASHINGTON JR. T substitution in			
10:50	4 COLLINS D substitution in			
10:50	11 ALLEN D substitution in			



Mount St. Mary's at Kentucky

11/16/21 Rupp Arena, Lexington
2021-22 Men's Basketball

Game Time: 7:00 PM
Game Duration: 2:13
Attendance: 18,227

Officials: Steven Anderson, Todd Austin, Wesley Ford

Game Time	UKY	Score	Diff	MSM
10:50	23 HOPKINS B substitution in			
10:50				2 THOMAS D substitution out
10:50				22 OPOKU N substitution out
10:50				3 GIBSON J substitution in
10:50				13 OFFURUM M substitution in
10:45				1 LEFFEWE D 2pt FG in the paint, jump shot blocked
10:45	4 COLLINS D block (1)			
10:40	3 WASHINGTON JR. T defensive rebound (2)			
10:40	3 WASHINGTON JR. T turnover travel (3)			
10:26				1 LEFFEWE D 2pt FG from turnover in the paint, jump shot missed
10:24	defensive rebound (29)			
10:24				42 JEFFERSON M substitution out
10:24				22 OPOKU N substitution in
10:10	3 WASHINGTON JR. T 2pt FG in the paint, layup blocked			
10:10				22 OPOKU N block (1)
10:07	offensive rebound (30)			
10:06	10 MINTZ D turnover bad pass (1)			13 OFFURUM M steal (1)
10:05	10 MINTZ D foul personal (2 - 2)			3 GIBSON J foul drawn (1)
10:05				23 REAVES J substitution out
10:05				5 BENJAMIN J substitution in
09:48		68-39	29	5 BENJAMIN J 2pt FG from turnover in the paint, jump shot made (7)
09:39	23 HOPKINS B 2pt FG in the paint, layup blocked			
09:39				13 OFFURUM M block (1)
09:37				5 BENJAMIN J defensive rebound (1)
09:36				5 BENJAMIN J turnover bad pass (3)
09:17	4 COLLINS D 2pt FG from turnover outside the paint, jump shot missed			
09:14				13 OFFURUM M defensive rebound (3)
08:59	4 COLLINS D substitution out			
08:59	10 MINTZ D substitution out			
08:59	11 ALLEN D substitution out			
08:59	23 HOPKINS B substitution out			
08:59	2 WHEELER S substitution in			
08:59	12 BROOKS JR. K substitution in			
08:59	31 GRADY K substitution in			
08:59	34 TSHIEBWE O substitution in			
08:59				1 LEFFEWE D substitution out
08:59				3 GIBSON J substitution out
08:59				13 OFFURUM M substitution out
08:59				2 THOMAS D substitution in
08:59				23 REAVES J substitution in
08:59				42 JEFFERSON M substitution in
08:48				5 BENJAMIN J 3pt FG , jump shot missed
08:44	34 TSHIEBWE O defensive rebound (14)			
08:26	2 WHEELER S 2pt FG in the paint, jump shot blocked			
08:26				22 OPOKU N block (2)
08:23	offensive rebound (32)			



Mount St. Mary's at Kentucky

11/16/21 Rupp Arena, Lexington
2021-22 Men's Basketball

Game Time: 7:00 PM
Game Duration: 2:13
Attendance: 18,227

Officials: Steven Anderson, Todd Austin, Wesley Ford

Game Time	UKY	Score	Diff	MSM
08:18	2 WHEELER S 2pt FG second chance outside the paint, jump shot missed			
08:15				5 BENJAMIN J defensive rebound (2)
08:12	2 WHEELER S foul personal (3 - 3)			5 BENJAMIN J foul drawn (3)
08:12				22 OPOKU N substitution out
08:12				13 OFFURUM M substitution in
08:00				42 JEFFERSON M 2pt FG outside the paint, jump shot missed
07:56				13 OFFURUM M offensive rebound (4)
07:55				13 OFFURUM M 2pt FG second chance in the paint, jump shot blocked
07:55	34 TSHIEBWE O block (3)			
07:50				2 THOMAS D offensive rebound (2)
07:49	3 WASHINGTON JR. T foul drawn (1)			42 JEFFERSON M foul offensive (1 - 3)
07:49				42 JEFFERSON M turnover offensive (2)
07:49	Timeout media			
07:49				5 BENJAMIN J substitution out
07:49				1 LEFFEW D substitution in
07:29	12 BROOKS JR. K 2pt FG from turnover outside the paint, jump shot missed			
07:26	34 TSHIEBWE O offensive rebound (15)			
07:24	12 BROOKS JR. K 2pt FG from turnover second chance in the paint, layup made (10)	70-39	31	
07:24	34 TSHIEBWE O assist (1)			
06:59	12 BROOKS JR. K foul shooting (1 - 4)			13 OFFURUM M foul drawn (3)
06:59				13 OFFURUM M free throw 1 - 2 missed
06:59				offensive dead ball rebound (2)
06:59				23 REAVES J substitution out
06:59				3 GIBSON J substitution in
06:59				13 OFFURUM M free throw 2 - 2 missed
06:59	12 BROOKS JR. K defensive rebound (7)			
06:43	34 TSHIEBWE O foul offensive (1 - 5)			3 GIBSON J foul drawn (2)
06:43	34 TSHIEBWE O turnover offensive (1)			
06:43				2 THOMAS D substitution out
06:43				13 OFFURUM M substitution out
06:43				5 BENJAMIN J substitution in
06:43				22 OPOKU N substitution in
06:23	34 TSHIEBWE O foul shooting (2 - 6)			3 GIBSON J foul drawn (3)
06:23				3 GIBSON J free throw 1 - 2 missed
06:23				offensive dead ball rebound (3)
06:23	12 BROOKS JR. K substitution out			
06:23	4 COLLINS D substitution in			
06:23				3 GIBSON J free throw 2 - 2 missed
06:23				42 JEFFERSON M offensive rebound (4)
06:22		70-41	29	42 JEFFERSON M 2pt FG from turnover second chance in the paint, jump shot made (4)
05:55	34 TSHIEBWE O 2pt FG outside the paint, jump shot missed			
05:51				3 GIBSON J defensive rebound (1)
05:27				42 JEFFERSON M 2pt FG in the paint, jump shot missed
05:27				offensive dead ball rebound (4)
05:27				turnover shot clock (14)
05:27				42 JEFFERSON M substitution out



Mount St. Mary's at Kentucky

11/16/21 Rupp Arena, Lexington
2021-22 Men's Basketball

Game Time: 7:00 PM
Game Duration: 2:13
Attendance: 18,227

Officials: Steven Anderson, Todd Austin, Wesley Ford

Game Time	UKY	Score	Diff	MSM
05:27				24 BARTON F substitution in
05:11	3 WASHINGTON JR. T 2pt FG from turnover in the paint, jump shot missed			
05:07				24 BARTON F defensive rebound (1)
05:01	2 WHEELER S foul personal (4 - 7)			5 BENJAMIN J foul drawn (4)
05:01	2 WHEELER S substitution out			
05:01	10 MINTZ D substitution in			
05:01		70-42	28	5 BENJAMIN J 1&1 free throw 1 made (8)
05:01		70-43	27	5 BENJAMIN J 1&1 free throw 2 made (9)
04:49	31 GRADY K 3pt FG , jump shot missed			
04:46				defensive rebound (24)
04:37	3 WASHINGTON JR. T foul personal (1 - 8)			5 BENJAMIN J foul drawn (5)
04:37	31 GRADY K substitution out			
04:37	23 HOPKINS B substitution in			
04:37		70-44	26	5 BENJAMIN J 1&1 free throw 1 made (10)
04:37		70-45	25	5 BENJAMIN J 1&1 free throw 2 made (11)
04:24	10 MINTZ D 2pt FG in the paint, layup blocked			
04:24				24 BARTON F block (1)
04:20	10 MINTZ D offensive rebound (2)			
04:17	10 MINTZ D turnover lost ball (2)			1 LEFFEWE D steal (1)
04:03		70-48	22	3 GIBSON J 3pt FG from turnover, jump shot made (3)
04:03				5 BENJAMIN J assist (2)
03:47	34 TSHIEBWE O 2pt FG in the paint, jump shot made (24)	72-48	24	
03:28				24 BARTON F 2pt FG in the paint, jump shot missed
03:24	3 WASHINGTON JR. T defensive rebound (3)			
03:23	3 WASHINGTON JR. T 2pt FG in the paint, jump shot blocked			
03:23				22 OPOKU N block (3)
03:23	offensive rebound (37)			
03:23	Timeout media			
03:23	10 MINTZ D substitution out			
03:23	11 ALLEN D substitution in			
03:23				22 OPOKU N substitution out
03:23				42 JEFFERSON M substitution in
03:10	3 WASHINGTON JR. T turnover bad pass (4)			42 JEFFERSON M steal (1)
03:01				3 GIBSON J 3pt FG from turnover, jump shot missed
02:57	34 TSHIEBWE O defensive rebound (16)			
02:46	34 TSHIEBWE O turnover bad pass (2)			24 BARTON F steal (1)
02:41	3 WASHINGTON JR. T foul shooting (2 - 9)			1 LEFFEWE D foul drawn (2)
02:41		72-49	23	1 LEFFEWE D free throw fast break 1 - 2 made (9)
02:41	34 TSHIEBWE O substitution out			
02:41	31 GRADY K substitution in			
02:41				5 BENJAMIN J substitution out
02:41				2 THOMAS D substitution in
02:41		72-50	22	1 LEFFEWE D free throw fast break 2 - 2 made (10)
02:33	3 WASHINGTON JR. T 2pt FG in the paint, jump shot made (16)	74-50	24	
02:15	23 HOPKINS B foul shooting (1 - 10)			2 THOMAS D foul drawn (1)
02:15		74-51	23	2 THOMAS D free throw 1 - 2 made (4)
02:15				42 JEFFERSON M substitution out
02:15				12 CORDILIA J substitution in



Mount St. Mary's at Kentucky

11/16/21 Rupp Arena, Lexington
2021-22 Men's Basketball

Officials: Steven Anderson, Todd Austin, Wesley Ford

Game Time	UKY	Score	Diff	MSM
02:15				2 THOMAS D free throw 2 - 2 missed
02:15	23 HOPKINS B defensive rebound (1)			
02:05	4 COLLINS D foul drawn (1)			12 CORDILIA J foul shooting (1 - 4)
02:05	4 COLLINS D free throw 1 - 2 made (1)	75-51	24	
02:05	4 COLLINS D free throw 2 - 2 made (2)	76-51	25	
01:41	3 WASHINGTON JR. T substitution out			
01:41	11 ALLEN D substitution out			
01:41	31 GRADY K substitution out			
01:41	14 CANADA B substitution in			
01:41	20 PAYNE Z substitution in			
01:41	25 WATKINS K substitution in			
01:41				1 LEFFEWE D 2pt FG in the paint, jump shot blocked
01:41	23 HOPKINS B block (1)			
01:33				12 CORDILIA J offensive rebound (1)
01:32				turnover shot clock (15)
01:23	23 HOPKINS B 2pt FG from turnover in the paint, jump shot missed			
01:21				24 BARTON F defensive rebound (2)
01:15	23 HOPKINS B foul personal (2 - 11)			2 THOMAS D foul drawn (2)
01:15		76-52	24	2 THOMAS D free throw fast break 1 - 2 made (5)
01:15		76-53	23	2 THOMAS D free throw fast break 2 - 2 made (6)
01:15				2 THOMAS D substitution out
01:15				11 ELLIOTT E substitution in
01:05	25 WATKINS K turnover lost ball (1)			11 ELLIOTT E steal (1)
01:05	25 WATKINS K foul personal (1 - 12)			11 ELLIOTT E foul drawn (1)
01:05				11 ELLIOTT E free throw fast break 1 - 2 missed
01:05				offensive dead ball rebound (5)
01:05				11 ELLIOTT E free throw fast break 2 - 2 missed
01:05	4 COLLINS D defensive rebound (2)			
00:55	25 WATKINS K turnover lost ball (2)			11 ELLIOTT E steal (2)
00:51				3 GIBSON J 2pt FG from turnover in the paint, layup missed
00:48	25 WATKINS K defensive rebound (1)			
00:42	20 PAYNE Z foul drawn (1)			3 GIBSON J foul shooting (1 - 5)
00:42	20 PAYNE Z free throw 1 - 2 made (1)	77-53	24	
00:42	20 PAYNE Z free throw 2 - 2 made (2)	78-53	25	
00:29	20 PAYNE Z steal (1)			11 ELLIOTT E turnover bad pass (1)
00:25	20 PAYNE Z 2pt FG fast break from turnover in the paint, layup made (4)	80-53	27	
00:13				3 GIBSON J 3pt FG , jump shot missed
00:09				12 CORDILIA J offensive rebound (2)
00:08		80-55	25	12 CORDILIA J 2pt FG second chance in the paint, jump shot made (2)
END OF GAME				
UKY 80-55 MSM				



Mount St. Mary's at Kentucky

11/16/21 Rupp Arena, Lexington
2021-22 Men's Basketball

Game Time: 7:00 PM
Game Duration: 2:13
Attendance: 18,227

Officials: Steven Anderson, Todd Austin, Wesley Ford

Mount St. Mary's - 28

NO.	Name	Min	FG			Rebounds			Fouls		TP	AS	TO	ST	Blocks		+/-
			M-A	M-A	M-A	OR	DR	TOT	PF	FD					BS	BA	
13	Mezie Offurum	F 07:50	0-1	0-0	0-2	1	1	2	0	1	0	0	1	1	1	1	-14
22	Nana Opoku	F 14:42	0-1	0-0	0-0	0	0	0	2	1	0	1	1	0	3	0	-11
42	Malik Jefferson	F 12:51	1-5	0-0	0-0	2	0	2	1	0	2	0	2	1	0	0	-15
5	Jalen Benjamin	G 08:50	1-2	0-1	4-4	0	2	2	0	3	6	1	2	0	0	0	2
23	Josh Reaves	G 09:22	2-4	2-4	0-0	0	0	0	0	0	6	0	1	0	0	0	-14
1	Dakota Leffew	16:53	2-6	0-1	2-2	0	0	0	0	1	6	0	0	1	0	2	-8
2	Deandre Thomas	10:20	0-0	0-0	3-4	1	0	1	0	2	3	1	0	0	0	0	-14
24	Frantisek Barton	06:52	0-1	0-0	0-0	0	2	2	0	0	0	0	0	1	1	0	0
3	Jaylin Gibson	08:50	1-4	1-3	0-2	0	1	1	1	3	3	0	0	0	0	0	8
12	Jedy Cordilia	02:15	1-1	0-0	0-0	2	0	2	1	0	2	0	0	0	0	0	-2
11	Elijah Elliott	01:15	0-0	0-0	0-2	0	0	0	0	1	0	0	1	2	0	0	-2
Team						1	1	2			0			2			
Totals			8-25	3-9	9-16	7	7	14	5	12	28	3	10	6	5	3	-14

Shooting By Period		
2 nd FG%	8-25	32.0%
3PT%	3-9	33.3%
FT%	9-16	56.3%
GM FG%	8-25	32.0%
3PT%	3-9	33.3%
FT%	9-16	56.3%

Dead Ball Rebounds: 4, 0

Technical Fouls::NONE

Kentucky - 42

NO.	Name	Min	FG			Rebounds			Fouls		TP	AS	TO	ST	Blocks		+/-
			M-A	M-A	M-A	OR	DR	TOT	PF	FD					BS	BA	
12	Keion Brooks Jr.	F 11:46	2-4	0-0	2-2	0	1	1	1	1	6	0	0	0	0	0	22
34	Oscar Tshiebwe	F 15:28	5-7	0-0	0-0	4	5	9	2	1	10	1	2	0	1	0	14
2	Sahvir Wheeler	G 13:08	4-7	0-0	0-0	0	0	0	3	0	8	4	0	1	0	1	20
3	TyTy Washington Jr.	G 13:27	2-6	0-0	0-0	0	3	3	2	1	4	1	2	1	0	2	4
31	Kellan Grady	G 14:32	3-5	2-3	0-0	1	0	1	0	0	8	0	0	1	0	0	20
10	Davion Mintz	08:21	0-1	0-0	0-0	1	0	1	1	0	0	0	2	0	0	1	3
4	Daimion Collins	08:14	0-1	0-0	2-2	0	1	1	0	1	2	0	0	0	1	0	-8
11	Dontaie Allen	03:33	0-0	0-0	0-0	0	0	0	0	0	0	0	0	0	0	0	-1
23	Bryce Hopkins	06:28	0-2	0-0	0-0	0	1	1	2	0	0	0	0	0	1	1	-4
14	Brennan Canada	01:41	0-0	0-0	0-0	0	0	0	0	0	0	0	0	0	0	0	0
20	Zan Payne	01:41	1-1	0-0	2-2	0	0	0	0	1	4	0	0	1	0	0	0
25	Kareem Watkins	01:41	0-0	0-0	0-0	0	1	1	1	0	0	0	2	0	0	0	0
Team						4	1	5			0			0			
Totals			17-34	2-3	6-6	10	13	23	12	5	42	6	8	4	3	5	14

Shooting By Period		
2 nd FG%	17-34	50.0%
3PT%	2-3	66.7%
FT%	6-6	100%
GM FG%	17-34	50.0%
3PT%	2-3	66.7%
FT%	6-6	100.0%

Dead Ball Rebounds: 0, 0

Technical Fouls::NONE

	MSM	UKY
Biggest lead	0 (1 st 20:00)	31 (2 nd 11:14)
Best Scoring Run	9(2 nd 4:03)	13(2 nd 16:15)
Lead Changes	0	
Times Tied	0	
Time with Lead	00:00	19:49

Points from	MSM	UKY
Turnovers	9	14
Paint	6	28
Second Chance	4	12
Fast Breaks	4	9
Bench	14	6

	Period by Period Scoring		
	1st	2nd	TOT
MSM	27	28	55
UKY	38	42	80

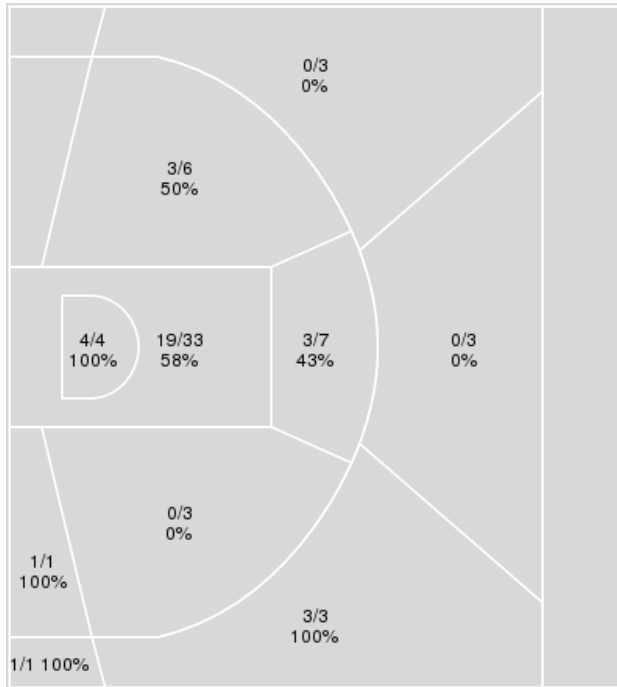


Officials: Steven Anderson, Todd Austin, Wesley Ford

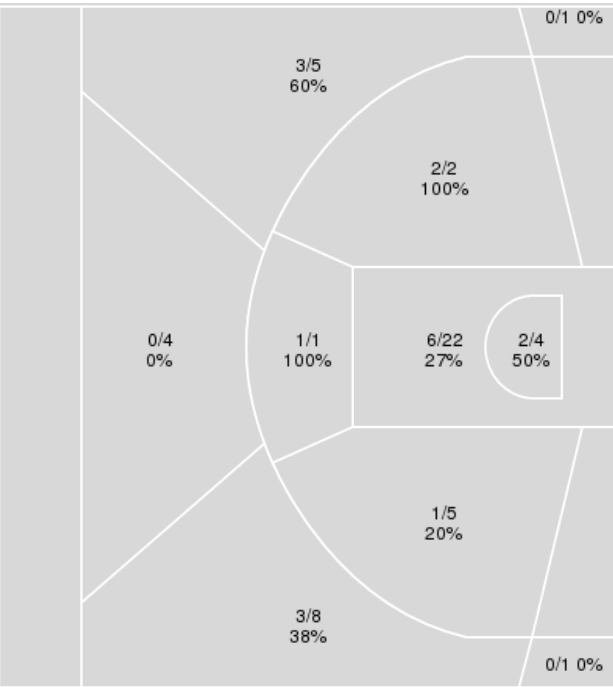
{ Players => 0, 1, 2, 3, 4, 10, 11, 12, 14, 20, 23, 25, 31, 34, 55; } FG
 Types => All; Results => All;

{ Players => 1, 2, 3, 4, 5, 10, 11, 12, 13, 15, 22, 23, 24, 34, 35, 42; } FG
 Types => All; Results => All;

Kentucky



Mount St. Mary's



Kentucky	M/A	%
Field Goals	34/64	53
2 Points	30/54	56
3 Points	4/10	40
Free Throws	8/8	100

Mount St. Mary's	M/A	%
Field Goals	18/53	34
2 Points	12/34	35
3 Points	6/19	32
Free Throws	13/21	62



Mount St. Mary's at Kentucky

11/16/21 Rupp Arena, Lexington
2021-22 Men's Basketball

Game Time: 7:00 PM
Game Duration: 2:13
Attendance: 18,227

Officials: Steven Anderson, Todd Austin, Wesley Ford

Mount St. Mary's

No	Name	Mins		Score		Points Diff		Points per Min		Assists		Rebounds		Steals		Turnovers	
		On	Off	On	Off	On	Off	On	Off	On	Off	On	Off	On	Off	On	Off
1	Dakota Leffew	26:38	13:22	44 - 53	11 - 27	-9	-16	1.65	0.82	5	3	16	11	6	1	10	6
2	Deandre Thomas	20:15	19:45	28 - 47	27 - 33	-19	-6	1.38	1.37	4	4	11	16	1	6	7	9
3	Jaylin Gibson	08:50	31:10	18 - 10	37 - 70	8	-33	2.04	1.19	1	7	9	18	6	1	4	12
5	Jalen Benjamin	24:35	15:25	34 - 39	21 - 41	-5	-20	1.38	1.36	5	3	22	5	4	3	10	6
11	Elijah Elliott	01:15	38:45	2 - 4	53 - 76	-2	-23	1.60	1.37	0	8	1	26	2	5	1	15
12	Jedy Cordilia	02:15	37:45	4 - 6	51 - 74	-2	-23	1.78	1.35	0	8	3	24	2	5	2	14
13	Mezie Offurum	24:07	15:53	22 - 52	33 - 28	-30	5	0.91	2.08	4	4	16	11	2	5	12	4
22	Nana Opoku	30:45	09:15	48 - 62	7 - 18	-14	-11	1.56	0.76	8	0	18	9	3	4	10	6
23	Josh Reaves	20:37	19:23	21 - 43	34 - 37	-22	-3	1.02	1.75	5	3	12	15	2	5	7	9
24	Frantisek Barton	13:21	26:39	18 - 28	37 - 52	-10	-15	1.35	1.39	1	7	11	16	5	2	6	10
42	Malik Jefferson	27:22	12:38	36 - 56	19 - 24	-20	-5	1.32	1.50	7	1	16	11	2	5	11	5

Kentucky

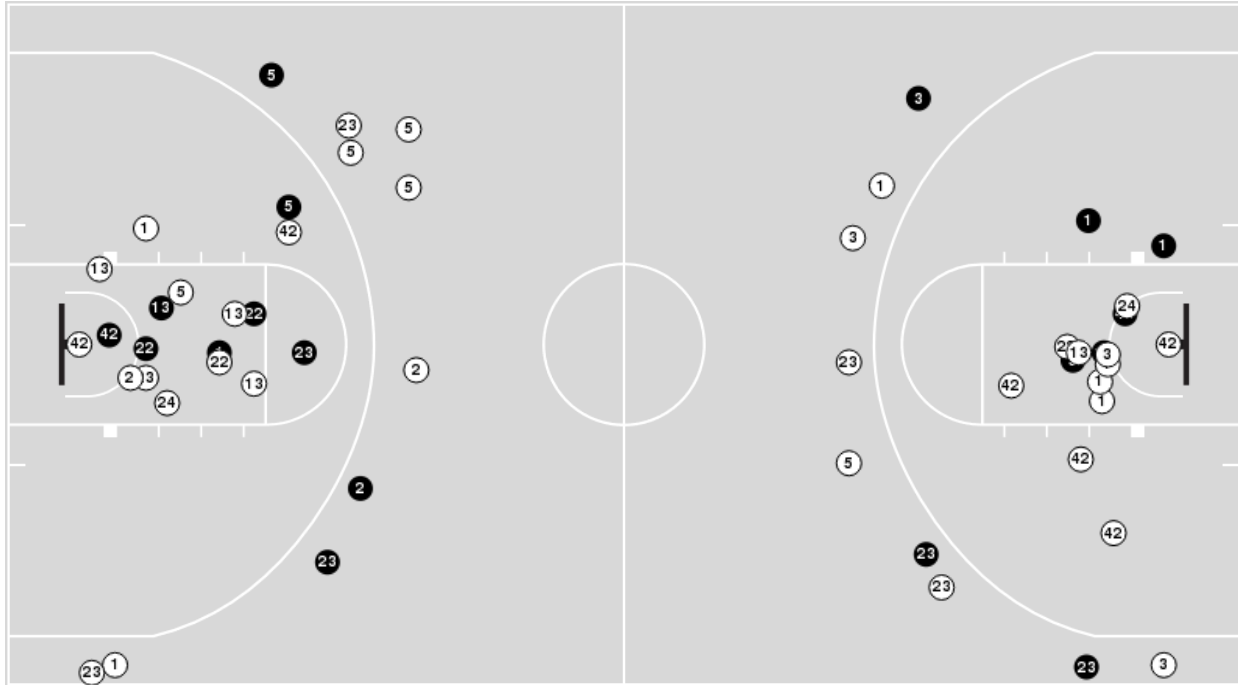
No	Name	Mins		Score		Points Diff		Points per Min		Assists		Rebounds		Steals		Turnovers	
		On	Off	On	Off	On	Off	On	Off	On	Off	On	Off	On	Off	On	Off
2	Sahvir Wheeler	29:12	10:48	62 - 30	18 - 25	32	-7	2.12	1.67	14	1	28	13	7	2	5	7
3	TyTy Washington Jr.	29:25	10:35	52 - 39	28 - 16	13	12	1.77	2.65	11	4	29	12	7	2	9	3
4	Daimion Collins	15:47	24:13	24 - 29	56 - 26	-5	30	1.52	2.31	4	11	19	22	3	6	8	4
10	Davion Mintz	17:01	22:59	36 - 25	44 - 30	11	14	2.12	1.91	7	8	19	22	4	5	3	9
11	Dontaie Allen	08:32	31:28	12 - 12	68 - 43	0	25	1.41	2.16	2	13	9	32	2	7	6	6
12	Keion Brooks Jr.	24:27	15:33	56 - 31	24 - 24	25	0	2.29	1.54	9	6	24	17	5	4	4	8
14	Brennan Canada	01:41	38:19	4 - 4	76 - 51	0	25	2.38	1.98	0	15	2	39	1	8	2	10
20	Zan Payne	01:41	38:19	4 - 4	76 - 51	0	25	2.38	1.98	0	15	2	39	1	8	2	10
23	Bryce Hopkins	14:13	25:47	23 - 24	57 - 31	-1	26	1.62	2.21	3	12	19	22	2	7	8	4
25	Kareem Watkins	01:41	38:19	4 - 4	76 - 51	0	25	2.38	1.98	0	15	2	39	1	8	2	10
31	Kellan Grady	22:53	17:07	55 - 31	25 - 24	24	1	2.40	1.46	10	5	20	21	4	5	3	9
34	Oscar Tshiebwe	33:27	06:33	68 - 42	12 - 13	26	-1	2.03	1.83	15	0	32	9	8	1	8	4



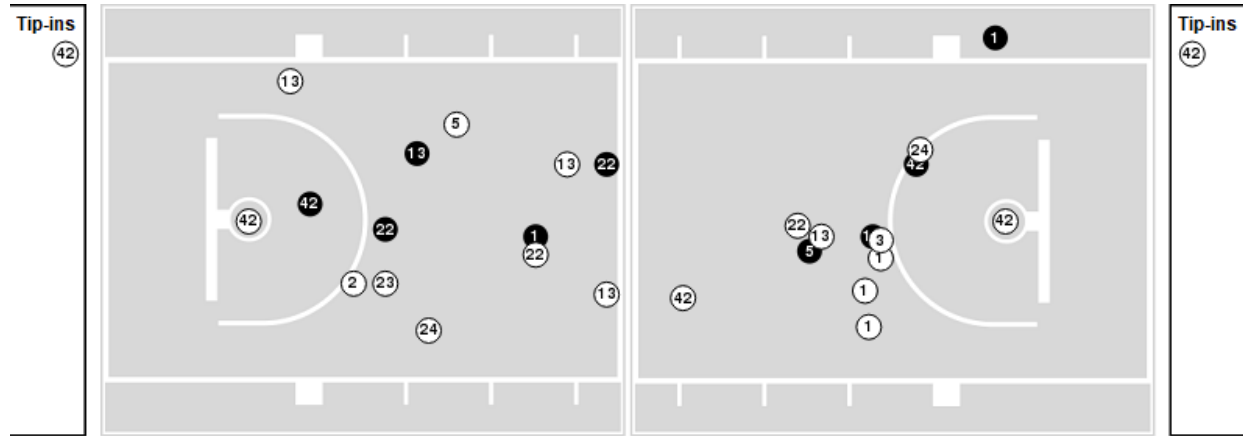
Players => 1, 2, 3, 4, 5, 10, 11, 12, 13, 15, 22, 23, 24, 34, 35, 42FG Types=>AllResults=>All

Mount St. Mary's

All Field Goals



Blow Up Chart



● Made ○ Missed N - Player Number

Mount St. Mary's	M/A	%
Field Goals	18/53	34
2 Points	12/34	35
3 Points	6/19	32
Free Throws	13/21	62

Mount St. Mary's	M/A	%
Points in the Paint	16 (8 / 26)	31
Fast Break Points	4 (4/6)	67
Second Chance Points	8 (4/8)	50
Effective FG%	40	

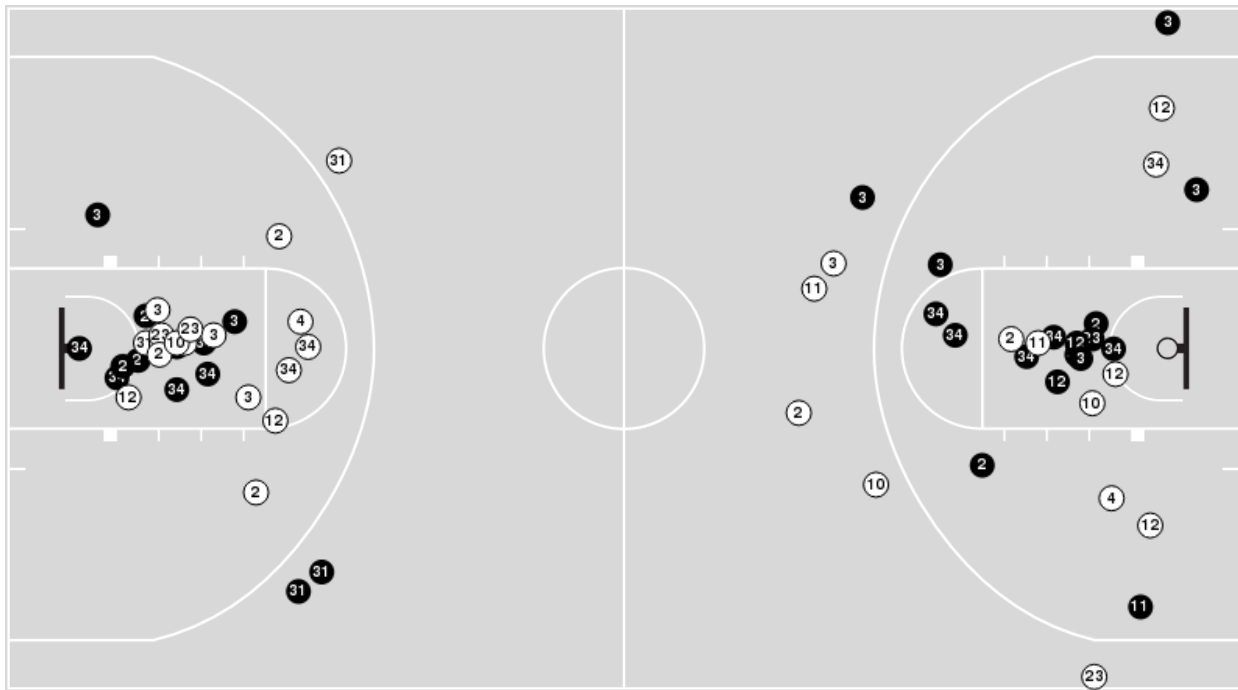


Officials: Steven Anderson, Todd Austin, Wesley Ford

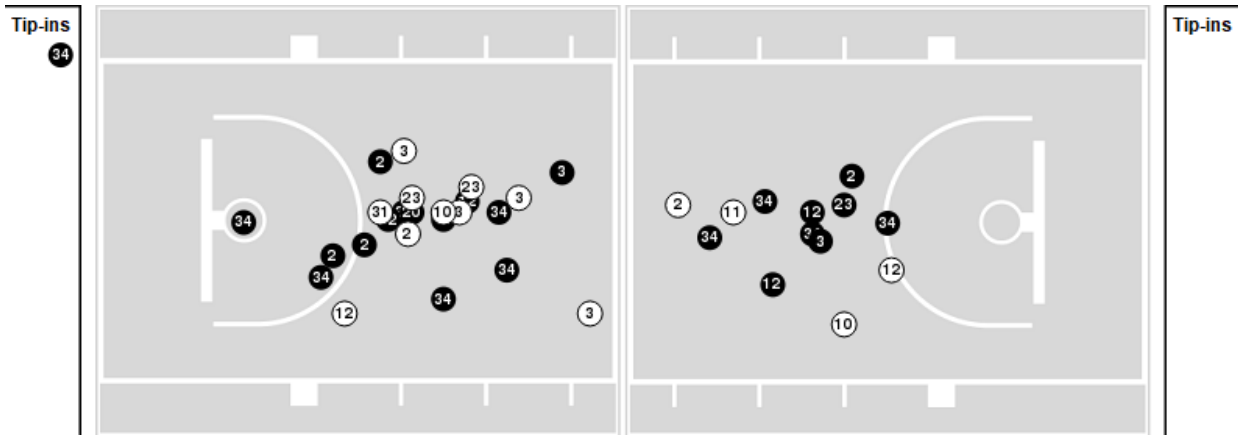
Players => 0, 1, 2, 3, 4, 10, 11, 12, 14, 20, 23, 25, 31, 34, 55FG Types=>AllResults=>All

Kentucky

All Field Goals



Blow Up Chart



● Made ○ Missed N - Player Number

Kentucky	M/A	%
Field Goals	34/64	53
2 Points	30/54	56
3 Points	4/10	40
Free Throws	8/8	100

Kentucky	M/A	%
Points in the Paint	46 (23 / 37)	62
Fast Break Points	13 (6/6)	100
Second Chance Points	16 (8/11)	73
Effective FG%	56	



Mount St. Mary's at Kentucky

11/16/21 Rupp Arena, Lexington
2021-22 Men's Basketball

Game Time: 7:00 PM
Game Duration: 2:13
Attendance: 18,227

Officials: Steven Anderson, Todd Austin, Wesley Ford

Mount St. Mary's

Lineup	Quarter On	Time On	Quarter Off	Time Off	Time on Court	Score	Score Diff	Reb	Stl	Tov	Ass	PPP
5- Benjamin J/ 13- Offurum M/ 22- Opoku N/ 23- Reaves J/ 42- Jefferson M/	1	20:00	1	16:51	03:09	7-6	1	3	0	1	3	1.4000
2- Thomas D/ 5- Benjamin J/ 13- Offurum M/ 22- Opoku N/ 23- Reaves J/	1	16:51	1	15:41	01:10	0-2	-2	0	1	0	0	0.0000
1- Leffew D/ 2- Thomas D/ 5- Benjamin J/ 13- Offurum M/ 22- Opoku N/	1	15:41	1	15:41	00:00	2-0	2	0	0	0	0	2.2727
1- Leffew D/ 2- Thomas D/ 5- Benjamin J/ 22- Opoku N/ 24- Barton F/	1	15:41	1	14:54	00:47	2-2	0	0	0	0	0	2.0000
1- Leffew D/ 2- Thomas D/ 13- Offurum M/ 24- Barton F/ 42- Jefferson M/	1	14:54	1	12:44	02:10	0-4	-4	2	0	2	0	0.0000
1- Leffew D/ 5- Benjamin J/ 22- Opoku N/ 23- Reaves J/ 42- Jefferson M/	1	12:44	1	12:00	00:44	2-0	2	1	0	0	0	1.0638
5- Benjamin J/ 13- Offurum M/ 22- Opoku N/ 23- Reaves J/ 42- Jefferson M/	1	12:00	1	10:00	02:00	2-6	-4	1	0	1	0	0.6667
1- Leffew D/ 2- Thomas D/ 13- Offurum M/ 22- Opoku N/ 42- Jefferson M/	1	10:00	1	07:59	02:01	5-5	0	0	0	0	1	1.6667
5- Benjamin J/ 13- Offurum M/ 22- Opoku N/ 23- Reaves J/ 24- Barton F/	1	07:59	1	06:14	01:45	0-2	-2	2	0	0	0	0.0000
1- Leffew D/ 5- Benjamin J/ 22- Opoku N/ 23- Reaves J/ 42- Jefferson M/	1	06:14	1	05:58	00:16	0-0	0	0	0	0	0	0.0000
1- Leffew D/ 2- Thomas D/ 5- Benjamin J/ 22- Opoku N/ 42- Jefferson M/	1	05:58	1	04:02	01:56	5-2	3	2	0	0	1	1.6667
1- Leffew D/ 2- Thomas D/ 5- Benjamin J/ 13- Offurum M/ 24- Barton F/	1	04:02	1	02:15	01:47	0-4	-4	2	0	1	0	0.0000
5- Benjamin J/ 13- Offurum M/ 22- Opoku N/ 23- Reaves J/ 42- Jefferson M/	1	02:15	1	00:03	02:11	2-5	-3	0	0	1	0	0.5000
1- Leffew D/ 2- Thomas D/ 13- Offurum M/ 22- Opoku N/ 42- Jefferson M/	1	00:03	2	20:00	00:04	0-0	0	0	0	0	0	0.0000
5- Benjamin J/ 13- Offurum M/ 22- Opoku N/ 23- Reaves J/ 42- Jefferson M/	2	20:00	2	18:03	01:57	0-6	-6	2	0	2	0	0.0000
1- Leffew D/ 5- Benjamin J/ 22- Opoku N/ 23- Reaves J/ 42- Jefferson M/	2	18:03	2	17:28	00:35	0-2	-2	0	0	1	0	0.0000
1- Leffew D/ 2- Thomas D/ 22- Opoku N/ 23- Reaves J/ 42- Jefferson M/	2	17:28	2	15:42	01:46	3-5	-2	0	0	0	1	1.5000
1- Leffew D/ 2- Thomas D/ 13- Offurum M/ 22- Opoku N/ 24- Barton F/	2	15:42	2	14:17	01:25	2-6	-4	0	0	1	0	0.6667
1- Leffew D/ 2- Thomas D/ 13- Offurum M/ 22- Opoku N/ 42- Jefferson M/	2	14:17	2	13:09	01:08	0-4	-4	0	0	1	0	0.0000
1- Leffew D/ 2- Thomas D/ 22- Opoku N/ 23- Reaves J/ 42- Jefferson M/	2	13:09	2	10:50	02:19	5-7	-2	0	0	0	1	1.6667
1- Leffew D/ 3- Gibson J/ 13- Offurum M/ 23- Reaves J/ 42- Jefferson M/	2	10:50	2	10:24	00:26	0-0	0	0	0	0	0	0.0000
1- Leffew D/ 3- Gibson J/ 13- Offurum M/ 22- Opoku N/ 23- Reaves J/	2	10:24	2	10:05	00:19	0-0	0	0	1	0	0	0.0000
1- Leffew D/ 3- Gibson J/ 5- Benjamin J/ 13- Offurum M/ 22- Opoku N/	2	10:05	2	08:59	01:06	2-0	2	2	0	1	0	1.0000
2- Thomas D/ 5- Benjamin J/ 22- Opoku N/ 23- Reaves J/ 42- Jefferson M/	2	08:59	2	08:12	00:47	0-0	0	1	0	0	0	0.0000
2- Thomas D/ 5- Benjamin J/ 13- Offurum M/ 23- Reaves J/ 42- Jefferson M/	2	08:12	2	07:49	00:23	0-0	0	2	0	1	0	0.0000
1- Leffew D/ 2- Thomas D/ 13- Offurum M/ 23- Reaves J/ 42- Jefferson M/	2	07:49	2	06:59	00:50	0-2	-2	0	0	0	0	0.0000
1- Leffew D/ 2- Thomas D/ 3- Gibson J/ 13- Offurum M/ 42- Jefferson M/	2	06:59	2	06:43	00:16	0-0	0	0	0	0	0	0.0000
1- Leffew D/ 3- Gibson J/ 5- Benjamin J/ 22- Opoku N/ 42- Jefferson M/	2	06:43	2	05:27	01:16	2-0	2	2	0	1	0	0.6944
1- Leffew D/ 3- Gibson J/ 5- Benjamin J/ 22- Opoku N/ 24- Barton F/	2	05:27	2	03:23	02:04	7-2	5	2	1	0	1	1.8617
1- Leffew D/ 3- Gibson J/ 5- Benjamin J/ 24- Barton F/ 42- Jefferson M/	2	03:23	2	02:41	00:42	1-0	1	0	2	0	0	0.6944
1- Leffew D/ 2- Thomas D/ 3- Gibson J/ 24- Barton F/ 42- Jefferson M/	2	02:41	2	02:15	00:26	2-2	0	0	0	0	0	2.2727
1- Leffew D/ 2- Thomas D/ 3- Gibson J/ 12- Cordilia J/ 24- Barton F/	2	02:15	2	01:15	01:00	2-2	0	2	0	1	0	0.8621
1- Leffew D/ 3- Gibson J/ 11- Elliott E/ 12- Cordilia J/ 24- Barton F/	2	01:15	2	00:00	01:15	2-4	-2	1	2	1	0	0.5155



Mount St. Mary's at Kentucky

11/16/21 Rupp Arena, Lexington
2021-22 Men's Basketball

Game Time: 7:00 PM
Game Duration: 2:13
Attendance: 18,227

Officials: Steven Anderson, Todd Austin, Wesley Ford

Kentucky

Lineup	Quarter On	Time On	Quarter Off	Time Off	Time on Court	Score	Score Diff	Reb	Stl	Tov	Ass	PPP
2- Wheeler S/ 3- Washington Jr. T/ 12- Brooks Jr. K/ 31- Grady K/ 34- Tshiebwe O/	1	20:00	1	17:32	02:28	4-5	-1	0	0	1	0	1.3333
2- Wheeler S/ 3- Washington Jr. T/ 4- Collins D/ 31- Grady K/ 34- Tshiebwe O/	1	17:32	1	14:54	02:38	6-6	0	3	0	1	2	1.2000
2- Wheeler S/ 3- Washington Jr. T/ 4- Collins D/ 10- Mintz D/ 34- Tshiebwe O/	1	14:54	1	12:00	02:54	4-0	4	3	2	0	2	0.8000
2- Wheeler S/ 3- Washington Jr. T/ 10- Mintz D/ 12- Brooks Jr. K/ 34- Tshiebwe O/	1	12:00	1	12:00	00:00	0-0	0	0	0	0	0	0.0000
3- Washington Jr. T/ 10- Mintz D/ 12- Brooks Jr. K/ 31- Grady K/ 34- Tshiebwe O/	1	12:00	1	10:00	02:00	6-4	2	1	1	0	1	1.7442
2- Wheeler S/ 10- Mintz D/ 12- Brooks Jr. K/ 23- Hopkins B/ 34- Tshiebwe O/	1	10:00	1	10:00	00:00	1-0	1	0	0	0	0	2.2727
2- Wheeler S/ 4- Collins D/ 10- Mintz D/ 12- Brooks Jr. K/ 23- Hopkins B/	1	10:00	1	07:59	02:01	4-5	-1	3	0	0	0	2.0000
2- Wheeler S/ 10- Mintz D/ 12- Brooks Jr. K/ 23- Hopkins B/ 34- Tshiebwe O/	1	07:59	1	06:14	01:45	2-0	2	2	0	0	1	1.0000
2- Wheeler S/ 11- Allen D/ 12- Brooks Jr. K/ 23- Hopkins B/ 34- Tshiebwe O/	1	06:14	1	05:58	00:16	0-0	0	1	0	1	0	0.0000
3- Washington Jr. T/ 11- Allen D/ 12- Brooks Jr. K/ 23- Hopkins B/ 34- Tshiebwe O/	1	05:58	1	04:02	01:56	2-5	-3	2	0	0	0	1.0000
2- Wheeler S/ 3- Washington Jr. T/ 11- Allen D/ 23- Hopkins B/ 34- Tshiebwe O/	1	04:02	1	02:15	01:47	4-0	4	1	1	0	2	1.3333
2- Wheeler S/ 3- Washington Jr. T/ 11- Allen D/ 12- Brooks Jr. K/ 34- Tshiebwe O/	1	02:15	1	01:15	01:00	2-2	0	0	1	1	0	1.0000
2- Wheeler S/ 3- Washington Jr. T/ 12- Brooks Jr. K/ 31- Grady K/ 34- Tshiebwe O/	1	01:15	2	15:42	05:33	16-3	13	7	2	0	3	2.0000
2- Wheeler S/ 10- Mintz D/ 12- Brooks Jr. K/ 31- Grady K/ 34- Tshiebwe O/	2	15:42	2	10:50	04:52	17-7	10	4	1	0	3	2.1574
3- Washington Jr. T/ 4- Collins D/ 10- Mintz D/ 11- Allen D/ 23- Hopkins B/	2	10:50	2	08:59	01:51	0-2	-2	3	0	2	0	0.0000
2- Wheeler S/ 3- Washington Jr. T/ 12- Brooks Jr. K/ 31- Grady K/ 34- Tshiebwe O/	2	08:59	2	06:23	02:36	2-0	2	4	0	1	1	0.6667
2- Wheeler S/ 3- Washington Jr. T/ 4- Collins D/ 31- Grady K/ 34- Tshiebwe O/	2	06:23	2	05:01	01:22	0-2	-2	0	0	0	0	0.0000
3- Washington Jr. T/ 4- Collins D/ 10- Mintz D/ 31- Grady K/ 34- Tshiebwe O/	2	05:01	2	04:37	00:24	0-2	-2	0	0	0	0	0.0000
3- Washington Jr. T/ 4- Collins D/ 10- Mintz D/ 23- Hopkins B/ 34- Tshiebwe O/	2	04:37	2	03:23	01:14	2-5	-3	3	0	1	0	1.0000
3- Washington Jr. T/ 4- Collins D/ 11- Allen D/ 23- Hopkins B/ 34- Tshiebwe O/	2	03:23	2	02:41	00:42	0-1	-1	1	0	2	0	0.0000
3- Washington Jr. T/ 4- Collins D/ 11- Allen D/ 23- Hopkins B/ 31- Grady K/	2	02:41	2	01:41	01:00	4-2	2	1	0	0	0	2.1277
4- Collins D/ 14- Canada B/ 20- Payne Z/ 23- Hopkins B/ 25- Watkins K/	2	01:41	2	00:00	01:41	4-4	0	2	1	2	0	0.8197



Official Basketball Line Up Analysis - Final
Mount St. Mary's at Kentucky
 11/16/21 Rupp Arena, Lexington
 2021-22 Men's Basketball

Game Time: 7:00 PM
Game Duration: 2:13
Attendance: 18,227

Officials: Steven Anderson, Todd Austin, Wesley Ford

Mount St. Mary's

Lineup	Time	Score	Score Diff	Pts/Min	Reb	Stl	Tov	Ass	PPP
5- Benjamin J/ 13- Offurum M/ 22- Opoku N/ 23- Reaves J/ 42- Jefferson M/	09:17	11-23	-12	1.1849	6	0	5	3	0.7333
1- Leffew D/ 2- Thomas D/ 22- Opoku N/ 23- Reaves J/ 42- Jefferson M/	04:05	8-12	-4	1.9592	0	0	0	2	1.6000
1- Leffew D/ 2- Thomas D/ 13- Offurum M/ 22- Opoku N/ 42- Jefferson M/	03:13	5-9	-4	1.5544	0	0	1	1	1.2500
1- Leffew D/ 2- Thomas D/ 13- Offurum M/ 24- Barton F/ 42- Jefferson M/	02:10	0-4	-4	0.0000	2	0	2	0	0.0000
1- Leffew D/ 3- Gibson J/ 5- Benjamin J/ 22- Opoku N/ 24- Barton F/	02:04	7-2	5	3.3871	2	1	0	1	1.8617
1- Leffew D/ 2- Thomas D/ 5- Benjamin J/ 22- Opoku N/ 42- Jefferson M/	01:56	5-2	3	2.5862	2	0	0	1	1.6667
1- Leffew D/ 2- Thomas D/ 5- Benjamin J/ 13- Offurum M/ 24- Barton F/	01:47	0-4	-4	0.0000	2	0	1	0	0.0000
5- Benjamin J/ 13- Offurum M/ 22- Opoku N/ 23- Reaves J/ 24- Barton F/	01:45	0-2	-2	0.0000	2	0	0	0	0.0000
1- Leffew D/ 5- Benjamin J/ 22- Opoku N/ 23- Reaves J/ 42- Jefferson M/	01:35	2-2	0	1.2632	1	0	1	0	0.5155
1- Leffew D/ 2- Thomas D/ 13- Offurum M/ 22- Opoku N/ 24- Barton F/	01:25	2-6	-4	1.4118	0	0	1	0	0.6667
1- Leffew D/ 3- Gibson J/ 5- Benjamin J/ 22- Opoku N/ 42- Jefferson M/	01:16	2-0	2	1.5789	2	0	1	0	0.6944
1- Leffew D/ 3- Gibson J/ 11- Elliott E/ 12- Cordilia J/ 24- Barton F/	01:15	2-4	-2	1.6000	1	2	1	0	0.5155
2- Thomas D/ 5- Benjamin J/ 13- Offurum M/ 22- Opoku N/ 23- Reaves J/	01:10	0-2	-2	0.0000	0	1	0	0	0.0000
1- Leffew D/ 3- Gibson J/ 5- Benjamin J/ 13- Offurum M/ 22- Opoku N/	01:06	2-0	2	1.8182	2	0	1	0	1.0000
1- Leffew D/ 2- Thomas D/ 3- Gibson J/ 12- Cordilia J/ 24- Barton F/	01:00	2-2	0	2.0000	2	0	1	0	0.8621
1- Leffew D/ 2- Thomas D/ 13- Offurum M/ 23- Reaves J/ 42- Jefferson M/	00:50	0-2	-2	0.0000	0	0	0	0	0.0000
1- Leffew D/ 2- Thomas D/ 5- Benjamin J/ 22- Opoku N/ 24- Barton F/	00:47	2-2	0	2.5532	0	0	0	0	2.0000
2- Thomas D/ 5- Benjamin J/ 22- Opoku N/ 23- Reaves J/ 42- Jefferson M/	00:47	0-0	0	0.0000	1	0	0	0	0.0000
1- Leffew D/ 3- Gibson J/ 5- Benjamin J/ 24- Barton F/ 42- Jefferson M/	00:42	1-0	1	1.4286	0	2	0	0	0.6944
1- Leffew D/ 3- Gibson J/ 13- Offurum M/ 23- Reaves J/ 42- Jefferson M/	00:26	0-0	0	0.0000	0	0	0	0	0.0000
1- Leffew D/ 2- Thomas D/ 3- Gibson J/ 24- Barton F/ 42- Jefferson M/	00:26	2-2	0	4.6154	0	0	0	0	2.2727
2- Thomas D/ 5- Benjamin J/ 13- Offurum M/ 23- Reaves J/ 42- Jefferson M/	00:23	0-0	0	0.0000	2	0	1	0	0.0000
1- Leffew D/ 3- Gibson J/ 13- Offurum M/ 22- Opoku N/ 23- Reaves J/	00:19	0-0	0	0.0000	0	1	0	0	0.0000
1- Leffew D/ 2- Thomas D/ 3- Gibson J/ 13- Offurum M/ 42- Jefferson M/	00:16	0-0	0	0.0000	0	0	0	0	0.0000
1- Leffew D/ 2- Thomas D/ 5- Benjamin J/ 13- Offurum M/ 22- Opoku N/	00:00	2-0	2	∞	0	0	0	0	2.2727



Mount St. Mary's at Kentucky

11/16/21 Rupp Arena, Lexington
2021-22 Men's Basketball

Game Time: 7:00 PM

Game Duration: 2:13

Attendance: 18,227

Officials: Steven Anderson, Todd Austin, Wesley Ford

Kentucky

Lineup	Time	Score	Score Diff	Pts/Min	Reb	Stl	Tov	Ass	PPP
2- Wheeler S/ 3- Washington Jr. T/ 12- Brooks Jr. K/ 31- Grady K/ 34- Tshiebwe O/	10:37	22-8	14	2.0722	11	2	2	4	1.5714
2- Wheeler S/ 10- Mintz D/ 12- Brooks Jr. K/ 31- Grady K/ 34- Tshiebwe O/	04:52	17-7	10	3.4932	4	1	0	3	2.1574
2- Wheeler S/ 3- Washington Jr. T/ 4- Collins D/ 31- Grady K/ 34- Tshiebwe O/	04:00	6-8	-2	1.5000	3	0	1	2	0.8571
2- Wheeler S/ 3- Washington Jr. T/ 4- Collins D/ 10- Mintz D/ 34- Tshiebwe O/	02:54	4-0	4	1.3793	3	2	0	2	0.8000
2- Wheeler S/ 4- Collins D/ 10- Mintz D/ 12- Brooks Jr. K/ 23- Hopkins B/	02:01	4-5	-1	1.9835	3	0	0	0	2.0000
3- Washington Jr. T/ 10- Mintz D/ 12- Brooks Jr. K/ 31- Grady K/ 34- Tshiebwe O/	02:00	6-4	2	3.0000	1	1	0	1	1.7442
3- Washington Jr. T/ 11- Allen D/ 12- Brooks Jr. K/ 23- Hopkins B/ 34- Tshiebwe O/	01:56	2-5	-3	1.0345	2	0	0	0	1.0000
3- Washington Jr. T/ 4- Collins D/ 10- Mintz D/ 11- Allen D/ 23- Hopkins B/	01:51	0-2	-2	0.0000	3	0	2	0	0.0000
2- Wheeler S/ 3- Washington Jr. T/ 11- Allen D/ 23- Hopkins B/ 34- Tshiebwe O/	01:47	4-0	4	2.2430	1	1	0	2	1.3333
2- Wheeler S/ 10- Mintz D/ 12- Brooks Jr. K/ 23- Hopkins B/ 34- Tshiebwe O/	01:45	3-0	3	1.7143	2	0	0	1	1.2295
4- Collins D/ 14- Canada B/ 20- Payne Z/ 23- Hopkins B/ 25- Watkins K/	01:41	4-4	0	2.3762	2	1	2	0	0.8197
3- Washington Jr. T/ 4- Collins D/ 10- Mintz D/ 23- Hopkins B/ 34- Tshiebwe O/	01:14	2-5	-3	1.6216	3	0	1	0	1.0000
2- Wheeler S/ 3- Washington Jr. T/ 11- Allen D/ 12- Brooks Jr. K/ 34- Tshiebwe O/	01:00	2-2	0	2.0000	0	1	1	0	1.0000
3- Washington Jr. T/ 4- Collins D/ 11- Allen D/ 23- Hopkins B/ 31- Grady K/	01:00	4-2	2	4.0000	1	0	0	0	2.1277
3- Washington Jr. T/ 4- Collins D/ 11- Allen D/ 23- Hopkins B/ 34- Tshiebwe O/	00:42	0-1	-1	0.0000	1	0	2	0	0.0000
3- Washington Jr. T/ 4- Collins D/ 10- Mintz D/ 31- Grady K/ 34- Tshiebwe O/	00:24	0-2	-2	0.0000	0	0	0	0	0.0000
2- Wheeler S/ 11- Allen D/ 12- Brooks Jr. K/ 23- Hopkins B/ 34- Tshiebwe O/	00:16	0-0	0	0.0000	1	0	1	0	0.0000
2- Wheeler S/ 3- Washington Jr. T/ 10- Mintz D/ 12- Brooks Jr. K/ 34- Tshiebwe O/	00:00	0-0	0	NaN	0	0	0	0	0.0000